



HAL
open science

Stress corrosion cracking in the context of deep geological nuclear storage

A. Didot, E. Herms, D. Feron, J. Chêne, D. Crusset

► To cite this version:

A. Didot, E. Herms, D. Feron, J. Chêne, D. Crusset. Stress corrosion cracking in the context of deep geological nuclear storage. LTC 2016 - 6th International Workshop on Long-term Prediction of Corrosion Damage in Nuclear Waste Systems, May 2016, Toronto, Canada. hal-02445725

HAL Id: hal-02445725

<https://cea.hal.science/hal-02445725>

Submitted on 20 Jan 2020

HAL is a multi-disciplinary open access archive for the deposit and dissemination of scientific research documents, whether they are published or not. The documents may come from teaching and research institutions in France or abroad, or from public or private research centers.

L'archive ouverte pluridisciplinaire **HAL**, est destinée au dépôt et à la diffusion de documents scientifiques de niveau recherche, publiés ou non, émanant des établissements d'enseignement et de recherche français ou étrangers, des laboratoires publics ou privés.

STRESS CORROSION CRACKING IN THE CONTEXT OF DEEP GEOLOGICAL NUCLEAR DISPOSAL: INVESTIGATIONS ON P235 AND P265 STEELS

A. Didot, E. Herms, **D. Féron**, CEA, Université Paris-Saclay, France
J. Chêne, Université d'Evry-Val-d'Essonne
D. Crusset, Andra, Châtenay-Malabry, France

LTC 2016, 6TH INTERNATIONAL WORKSHOP ON LONG -TERM
PREDICTION OF CORROSION DAMAGE IN NUCLEAR WASTE
SYSTEMS, TORONTO, CANADA, MAY 9-12, 2016

Background & experimental procedure

Susceptibility to SCC

Slow strain rate tests
Corrosion Potential & Temperature
Base metal and welded zone

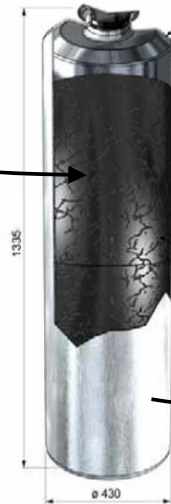
Crack Initiation

Constant deformation tests
Welded zone
Hardness, Perlite

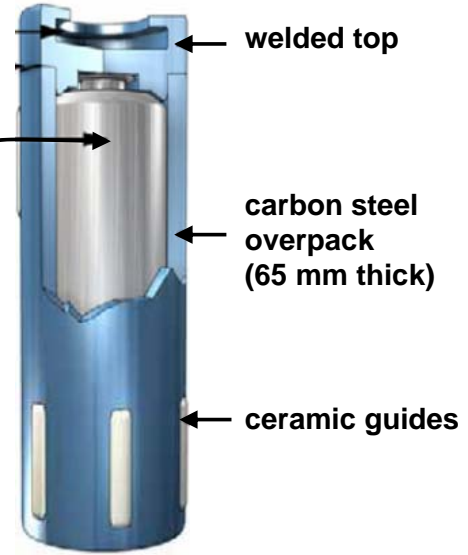
- ① **Vitrified nuclear waste**
Limitation of radionuclides' release
(10^5 years)



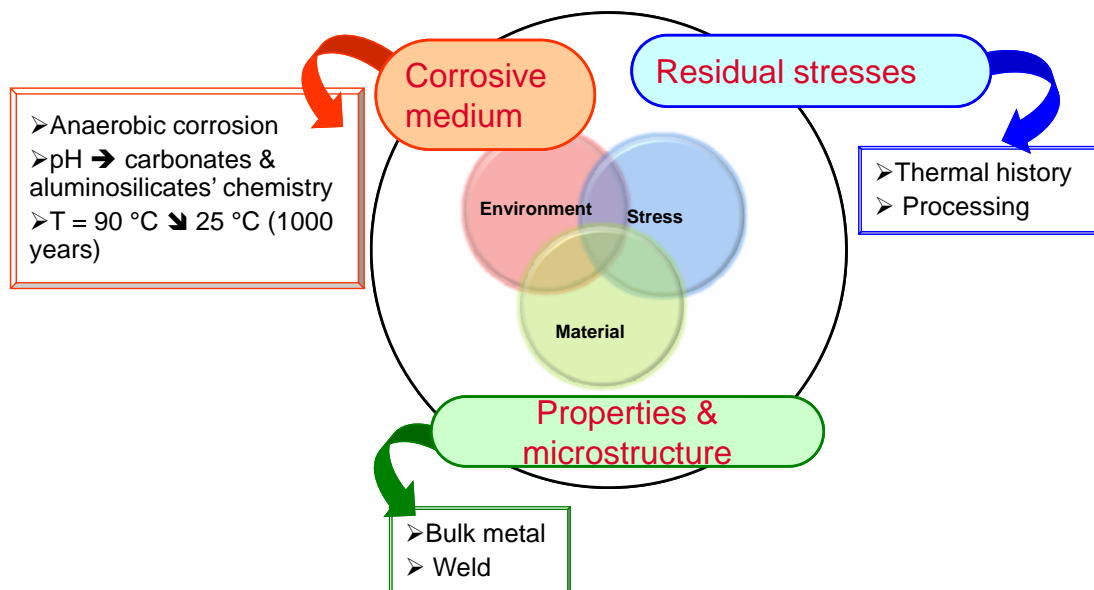
- ② **Stainless steel container (309S)**
No function (so far)



- ③ **Carbon steel overpack**
Isolation of the vitrified nuclear waste from interstitial water
(10^3 years)

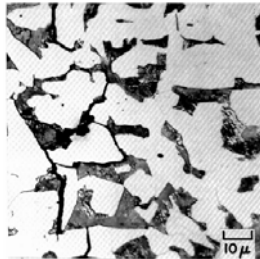


Sensitivity to stress corrosion cracking of the carbon steel used for the overpack container in the conditions of the storage



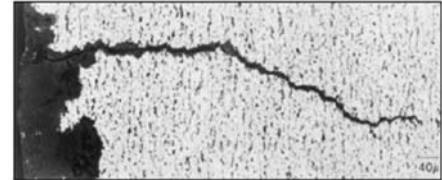
2 cracking mechanisms have been identified in buried pipes, characterized by specific potential-pH domain

Intergranular

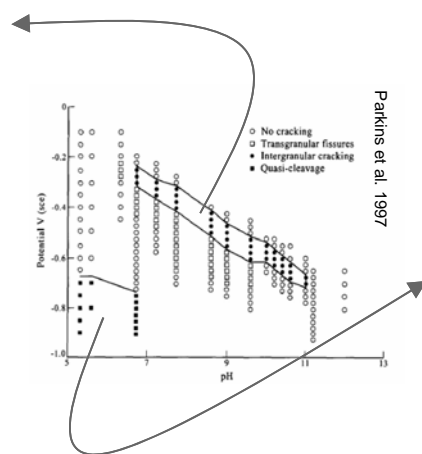


« passive » Steel
alkaline pH

Transgranular



Parkins et al. 1994



Parkins et al. 1997

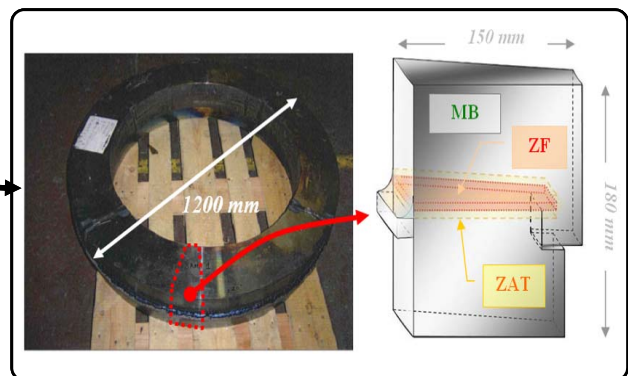
« active » steel
quasi-neutral pH
Dynamic loading

Coupons have been taken from two mock-ups.

2 grades

P265
→ weld

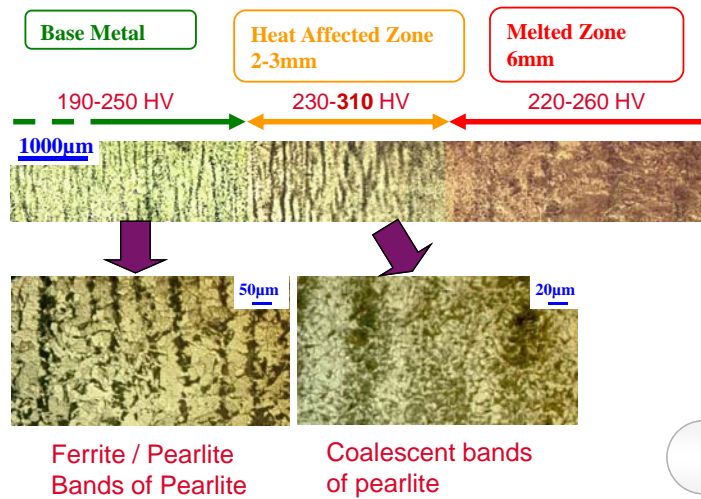
P235
→ bulk



Composition Massique (%)	C	Mn	Si	P	S	Al	N	Cr	Cu	Mo	Nb	Ni	Ti	V
	P235 GH	0,152	1,08	0,21	0,008	0,006	0,040	-	0,19	0,21	0,05	0,004	0,13	-
P265 GH	0,116	1,19	0,286	0,012	0,0011	0,040	0,0044	0,032	0,015	0,007	0,000	0,024	0,009	0,001

Caractéristiques mécaniques	Rp0,2% (MPa)	Rm (MPa)	At (%)
	P235 GH	270	460
P265 GH	280	453	40

P265 (weld)



Microstructure in bands:
risk of SCC

Hardness > 250Hv
risk of Hydrogen Embrittlement

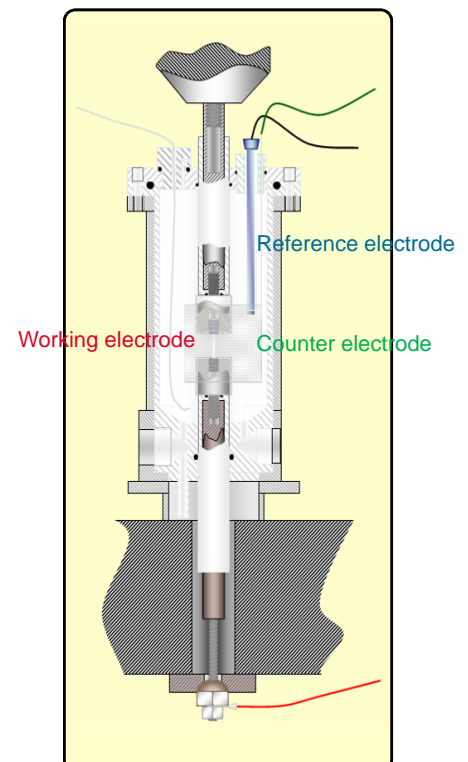
Sensitivity to stress corrosion cracking of
the steel in storage environment

Mechanical dynamic solicitations
(10^{-7} à 10^{-4} s $^{-1}$ → 1 - 800 hours).

➤ Influence of parameters: corrosion
potential, temperature,
microstructure...

Environment

➤ synthetic representative Bure water
(Na $^{+}$, K $^{+}$, Ca $^{2+}$, Mg $^{2+}$, SO $_4^{2-}$, Cl $^{-}$, HCO $_3^{-}$)
➤ pH ~ 7 (p_{CO_2})
➤ without oxygen
➤ 25 et 90 °C.



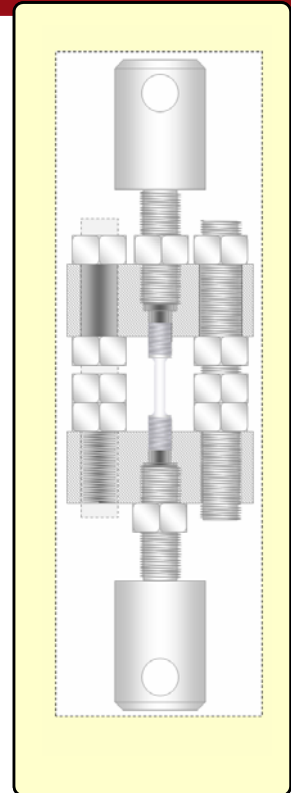
Initiation of stress corrosion cracking under representative conditions (mechanical & chemical)

Static mechanical solicitations

- 2 degrees of initial stresses as function of the yield strength (0,8 et 1,2 $R_{p0,2\%}$) relaxation (creep, cracks)
- **1 year test** → initiation of the phenomena (not initiation time).

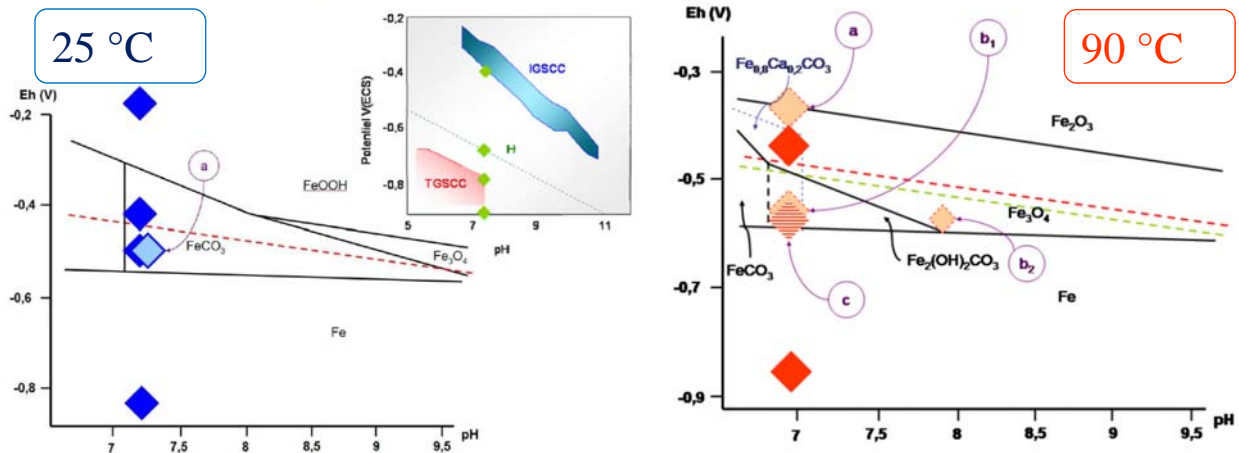
Environment

- Bure clay and bure synthetic water
- pH ~ 7 (pCO_2)
- no oxygen
- 90 °C



**SENSITIVITY TO STRESS CORROSION
CRACKING**

SLOW STRAIN RATE TESTS

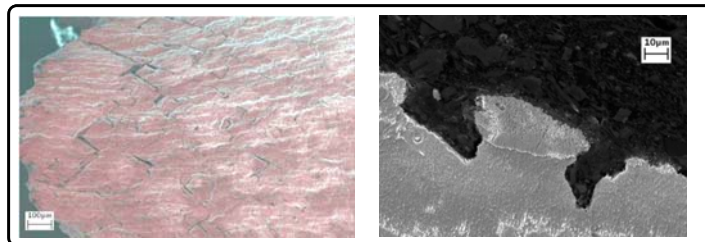
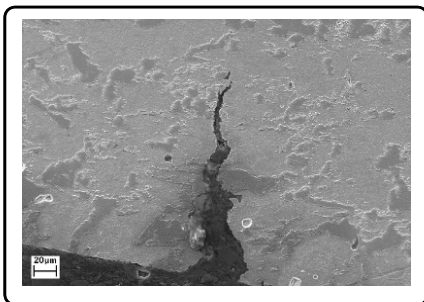


Polarisation potentials used during the slow strain rate tests plotted in the Pourbaix diagram

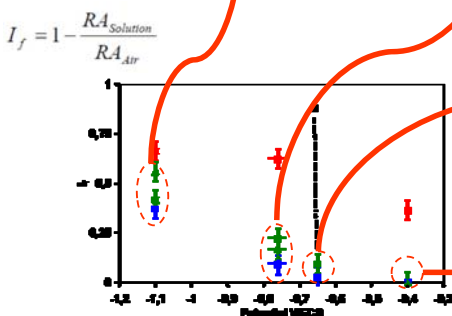
- ❖ a and b₁ are related to measured or calculated corrosion potentials
- ❖ b₂ is related to a measured pH

Transgranular cracking

25 °C



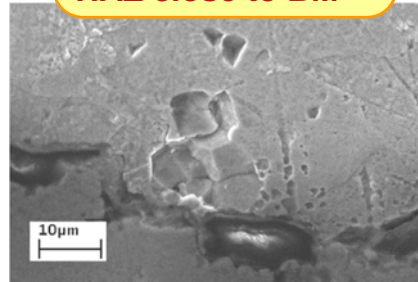
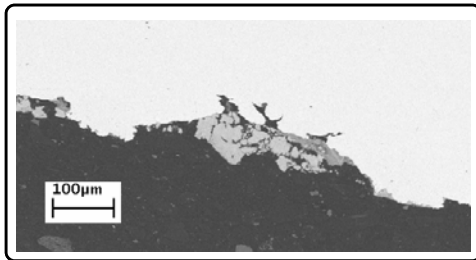
plastic deformation → localised corrosion ?



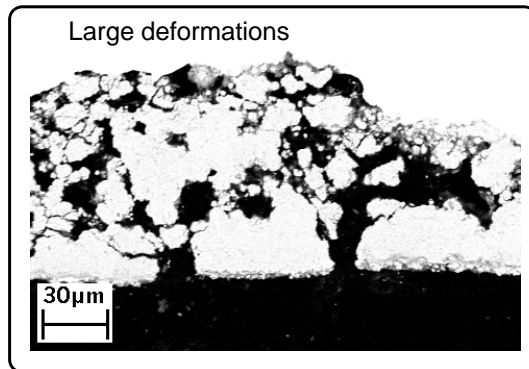
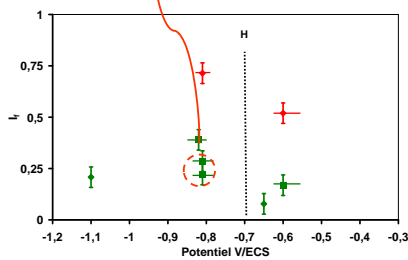
no intergranular cracking in the range of applied potentials

Intergranular degradation

90 °C



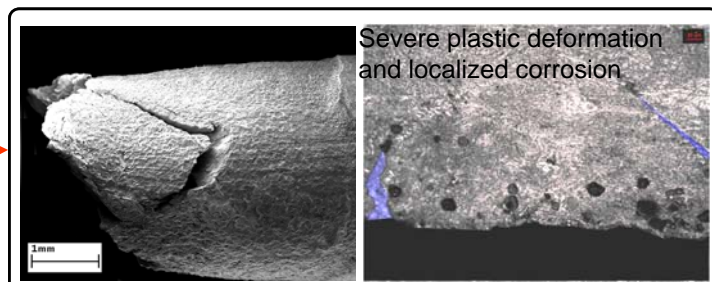
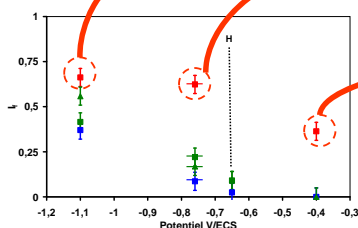
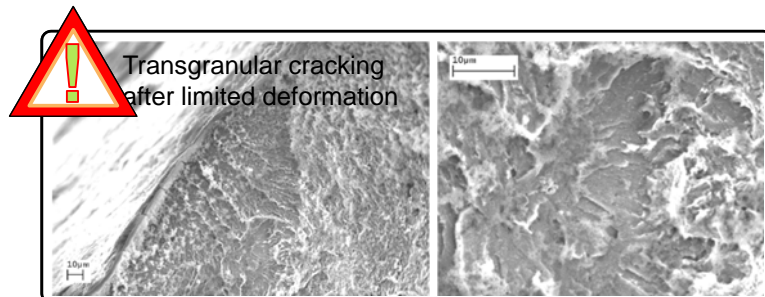
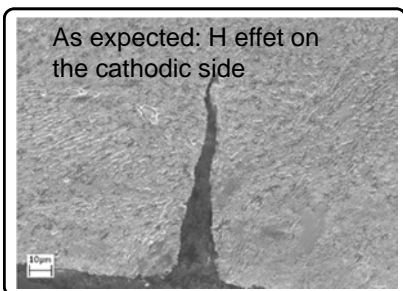
HAZ close to BM



Large deformations

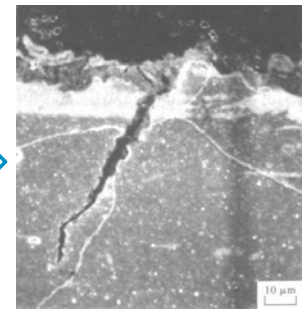
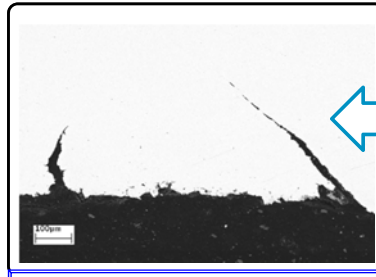
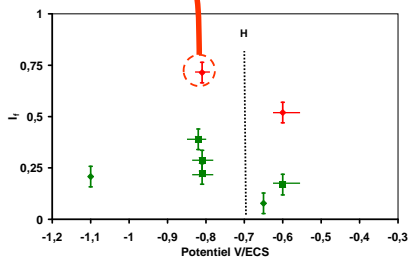
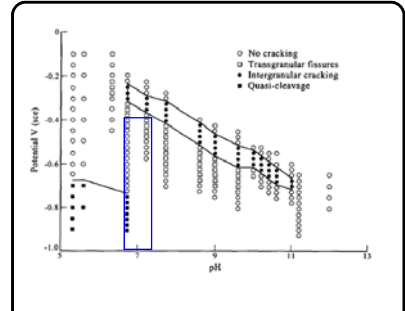
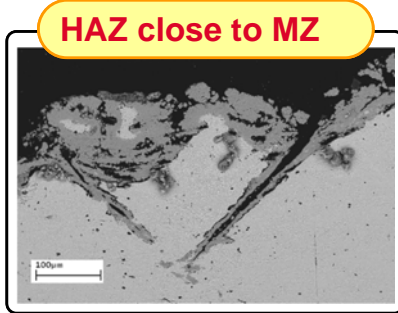
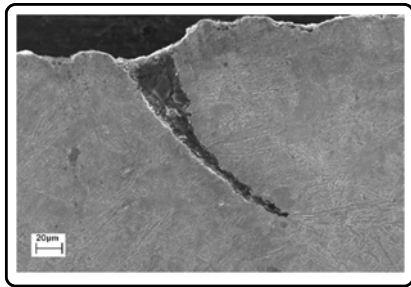
Hydrogen embrittlement at the tested corrosion potentials

25 °C



Hydrogen embrittlement ?
→ plastic deformation & localized corrosion.

90 °C



LTC 2016 – D. FÉRON

No reproduction

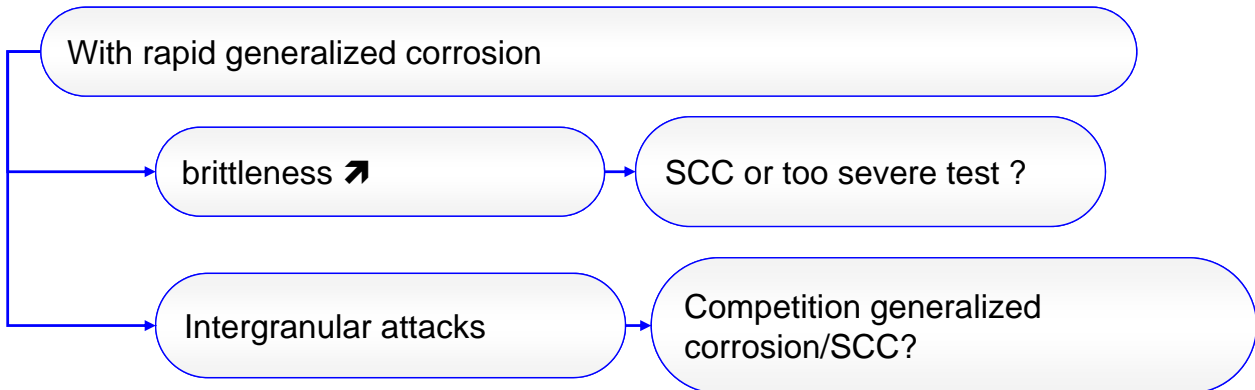
MZ / -400 mV_{ECS}
10⁻⁶ s⁻¹ / 25 °C

Non alloyed steel
-350 mV_{ECS} / 22 °C

SUMMARY & DISCUSSION
OF SLOW STRAIN RATE TESTS

Welded Zone → Hydrogen embrittlement at the corrosion potential at 25 °C.

Base Metal → no domain of sensitivity to intergranular cracking in the range of applied potentials at 25 °C
→ The mechanism of passive film cracking is possible at 90 °C.

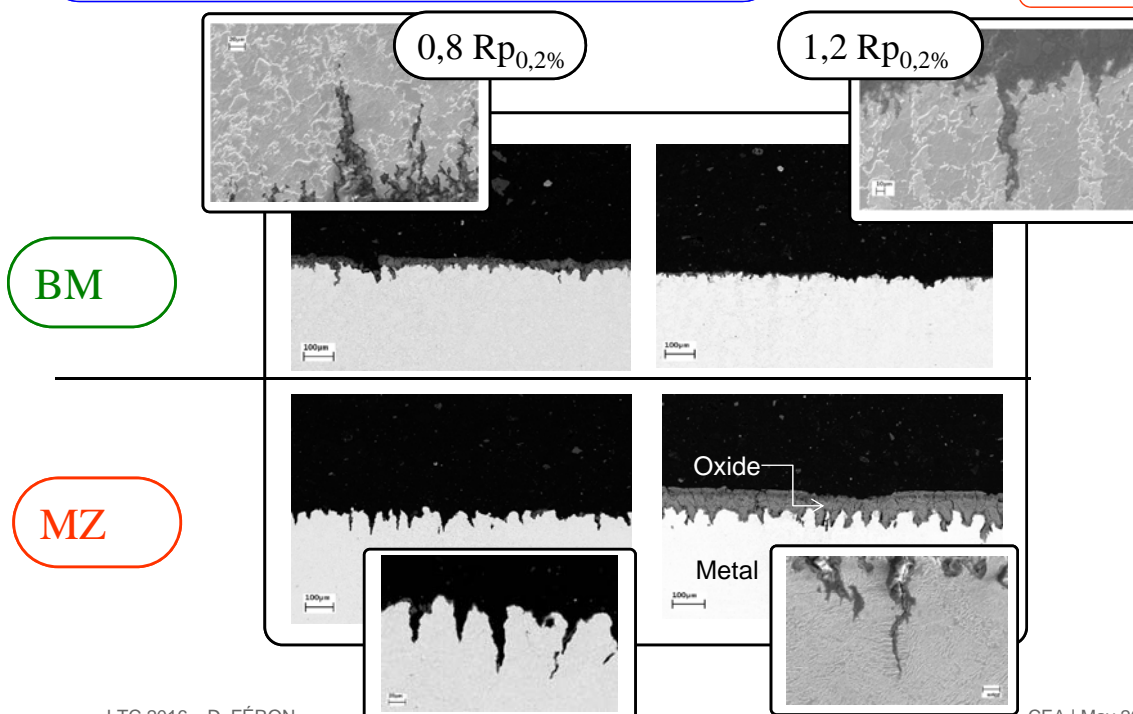


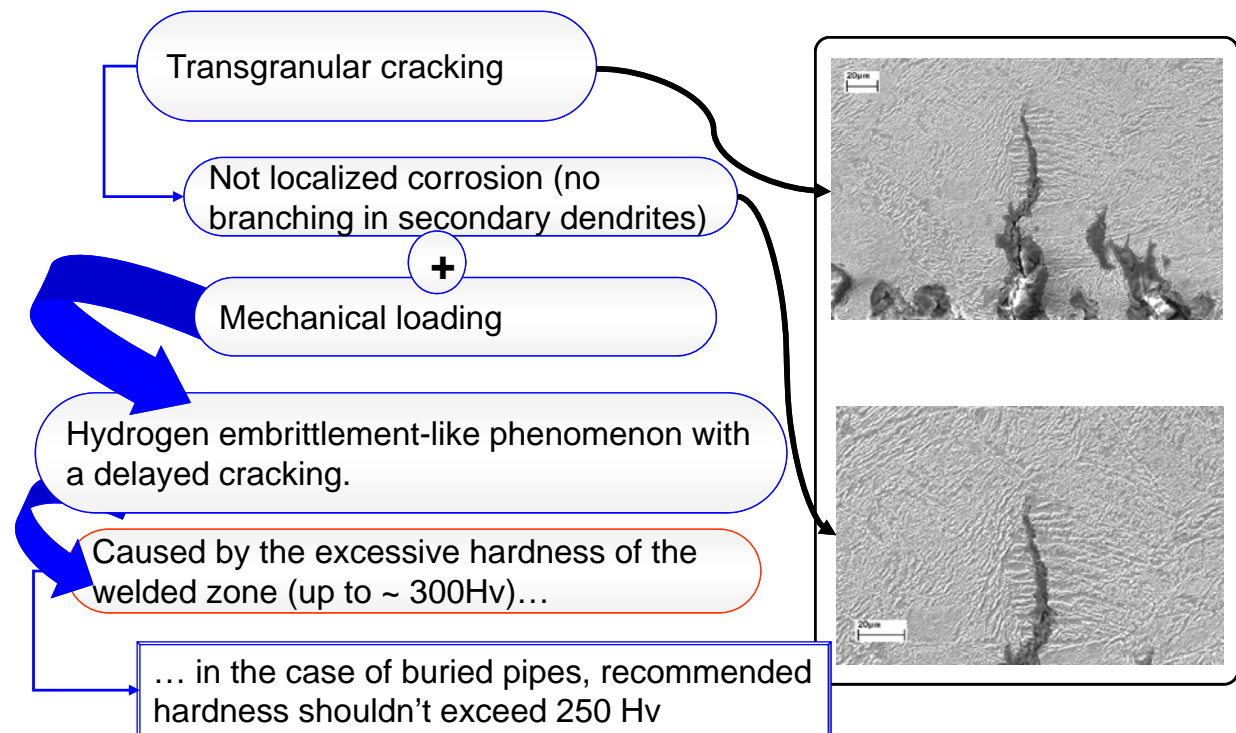
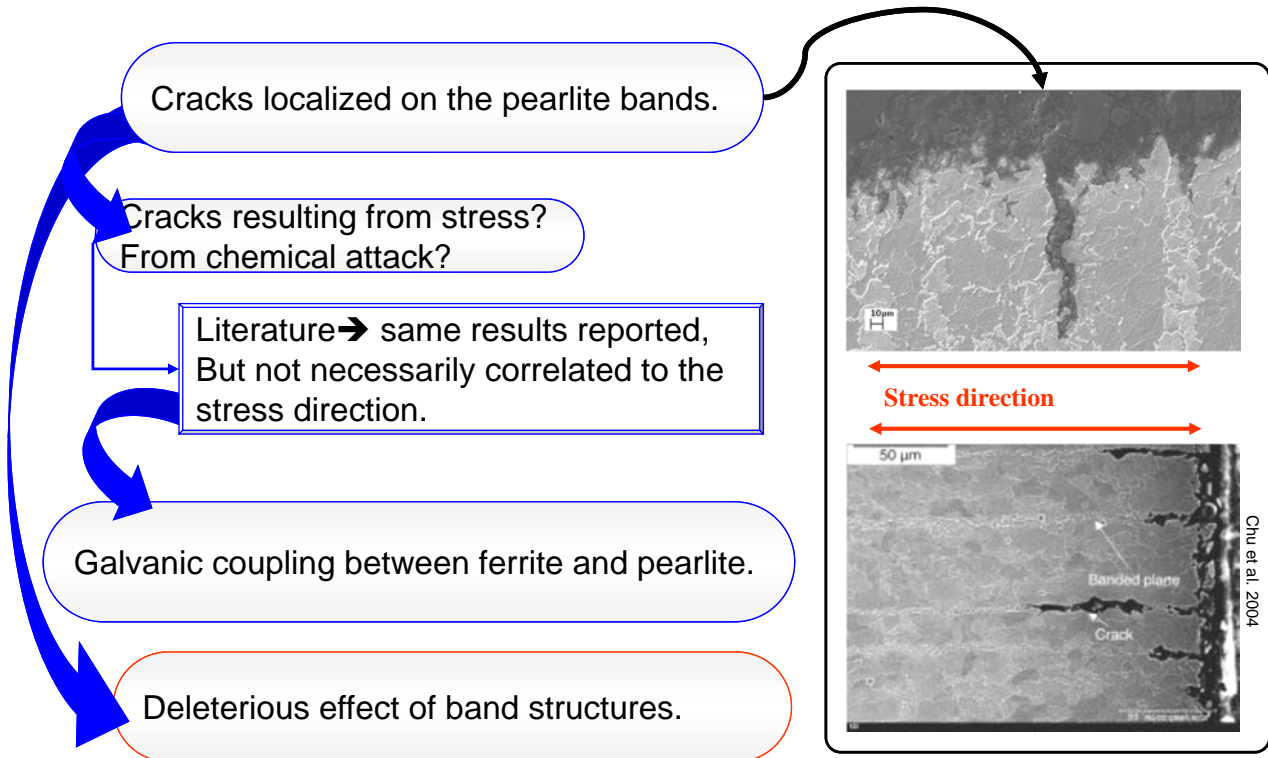
INITIATION OF STRESS CORROSION CRACKING

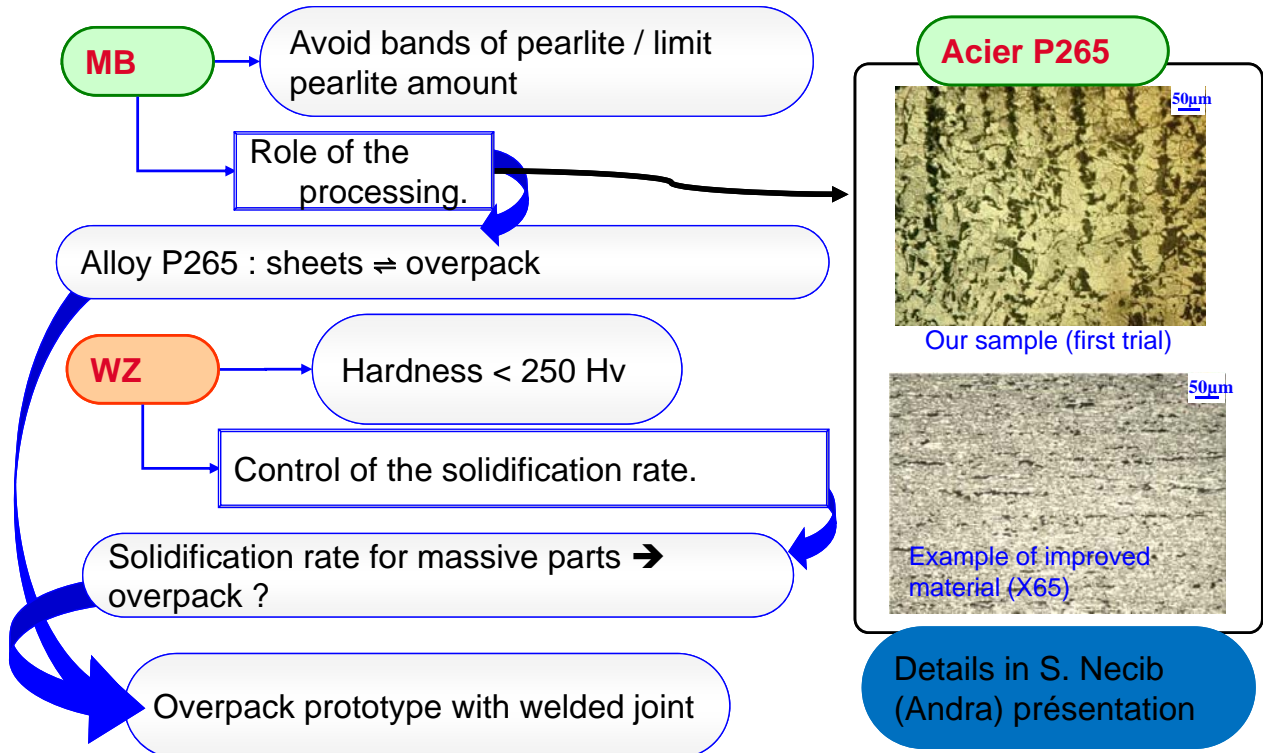
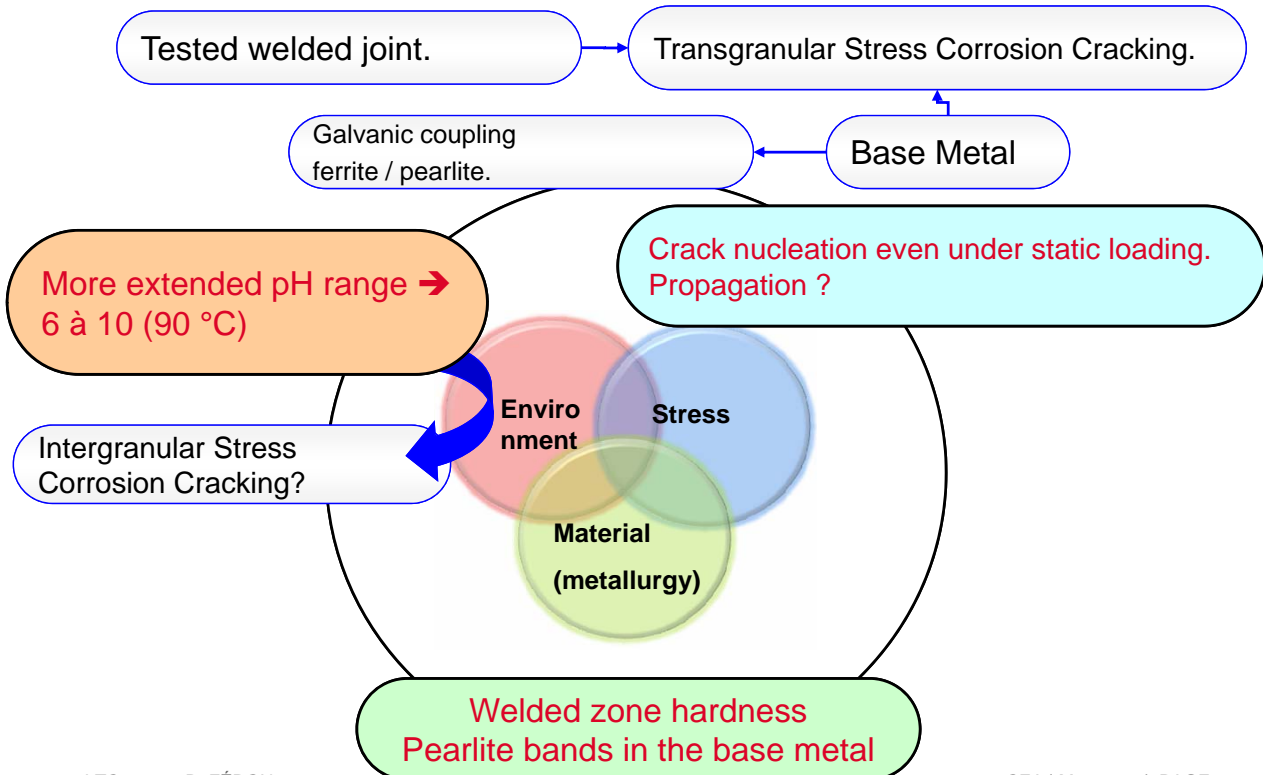
CONSTANT DEFORMATION TESTS

After 1 year → Multi cracking in BM and WZ

90 °C







Thank you for your attention



Commissariat à l'énergie atomique et aux énergies alternatives
Centre de Saclay | 91191 Gif-sur-Yvette Cedex

Damien Féron
T. +33 (0)1 69 08 20 65 | F. +33 (0)1 69 08 15 86

Etablissement public à caractère industriel et commercial | RCS Paris B 775 685 019

Nuclear energy directorate
(DEN)
Department of « physico-chemistry »
(DPC)
« Service of corrosion »
(SCCME)