



**HAL**  
open science

## Embedded reflectometry into additional heating launchers of WEST

F Clairet, C Bottereau, A Jamann, C Jammes, L. Vermare

► **To cite this version:**

F Clairet, C Bottereau, A Jamann, C Jammes, L. Vermare. Embedded reflectometry into additional heating launchers of WEST. IRW16 - 16th International Reflectometry Workshop, May 2024, Greiswald, Germany. cea-04706584

**HAL Id: cea-04706584**

**<https://cea.hal.science/cea-04706584v1>**

Submitted on 23 Sep 2024

**HAL** is a multi-disciplinary open access archive for the deposit and dissemination of scientific research documents, whether they are published or not. The documents may come from teaching and research institutions in France or abroad, or from public or private research centers.

L'archive ouverte pluridisciplinaire **HAL**, est destinée au dépôt et à la diffusion de documents scientifiques de niveau recherche, publiés ou non, émanant des établissements d'enseignement et de recherche français ou étrangers, des laboratoires publics ou privés.



irfm



## Embedded reflectometry into additional heating launchers of WEST

*F. Clairet, C. Bottereau, A. Jamann, C. Jammes and WEST team  
CEA-IRFM, France*

*L. Vermare  
CNRS-LPP, France*

*ASIPP team  
Institute of plasma physics, Chinese Academy of Sciences*





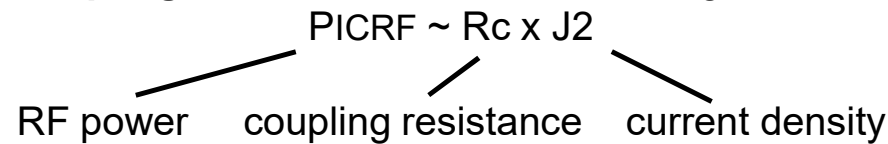
## **outline**

- **Coupling issue of LH and ICRH heating systems.**
- **Embedded reflectometry in LH launcher.**
- **Embedded reflectometry in ICRH launcher.**
- **Sectoral waveguide horn antennas.**
- **Magnetic ripple and Doppler shift issues.**

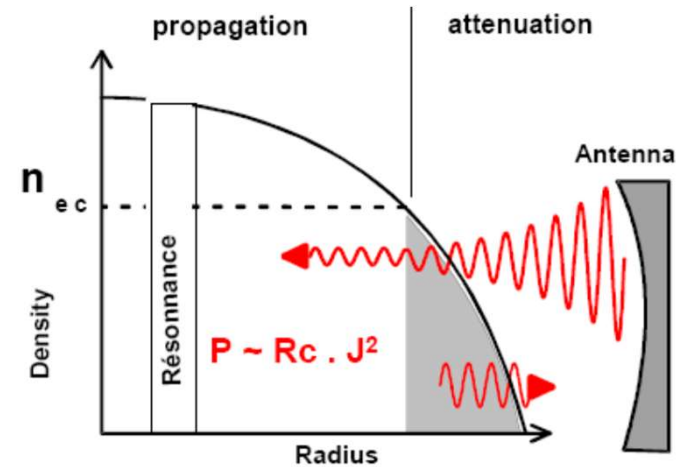


# Coupling issue of RF heatings LH and ICRH

**Coupling** is related to antenna matching



**Cut-off densities :**  
LH  $\sim 10^{18} \text{ m}^{-3}$   
ICRH  $\sim 10^{19} \text{ m}^{-3}$



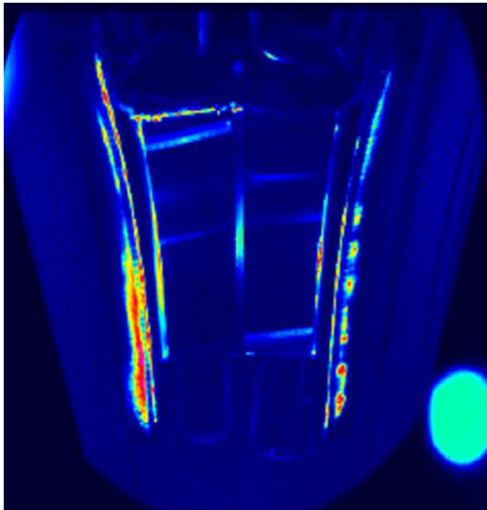
**RF coupling depends on the distance between the RF launcher and the plasma**

*Clairet PPCF 2004)*



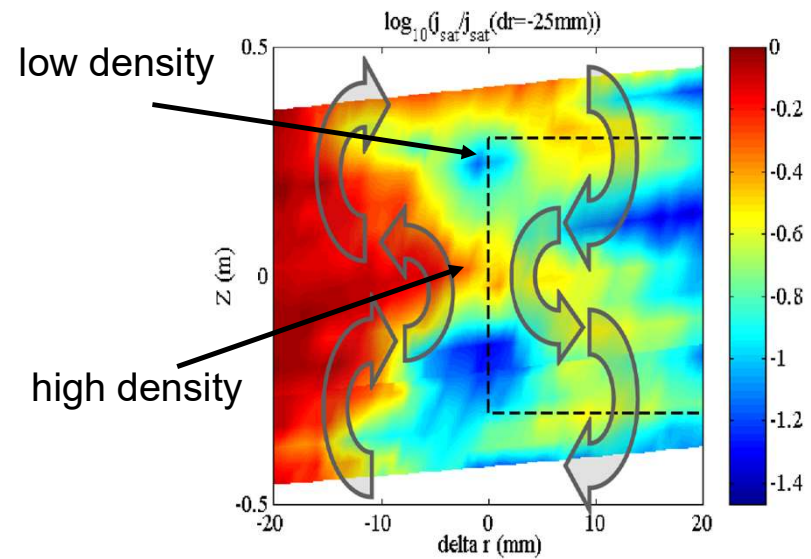
# Density variations in front of the antenna

Density inhomogeneities related to local overheatings of a ICRH antenna



L. Colas et al. *Nuclear Fusion*, vol. **46**, p. S500 (2006)

Density turns around cells

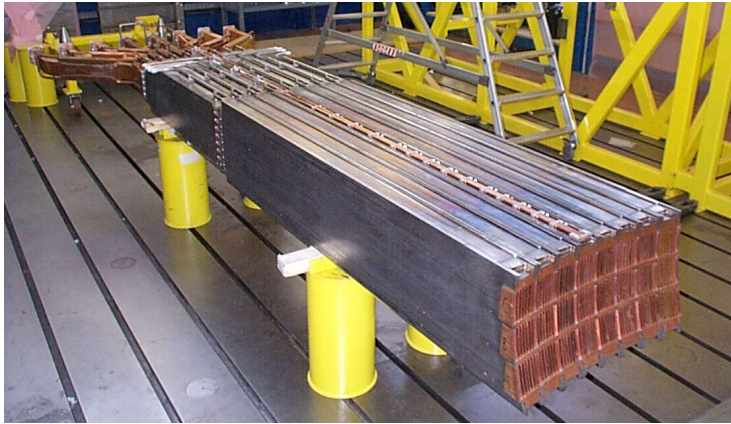


L. Colas, J.P. Gunn et al. *JNM*, vol. **363-365**, p. 555 (2007)



# Waveguides embedded in the LH Antenna

(Clairet IRW 2009 & RSI 2011)



3.4 m of WR-28 waveguides (26-40 GHz) between the 2 modules of the LH antenna.

+ 68 cm of WR-15 waveguides (50-75 GHz) to avoid water cooling pipes.

- 10 cm of linear taper welded by electron beam.
- Differential thermal expansion module/waveguides : 5mm max.
- Estimated losses in waveguide ~ 5dB.



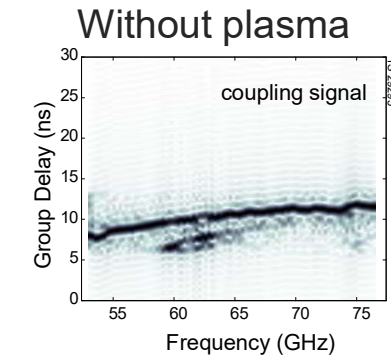
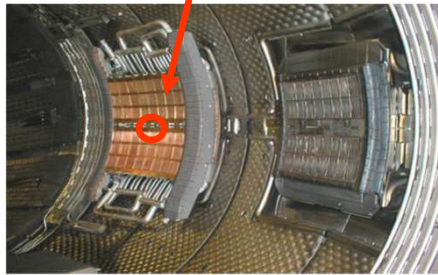
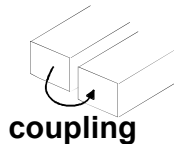
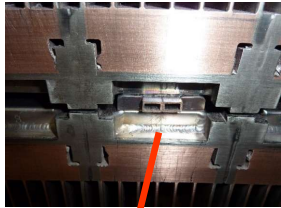
**Rather complex integration required...**



# Edge density measurements

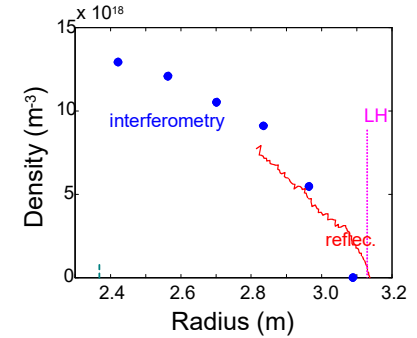
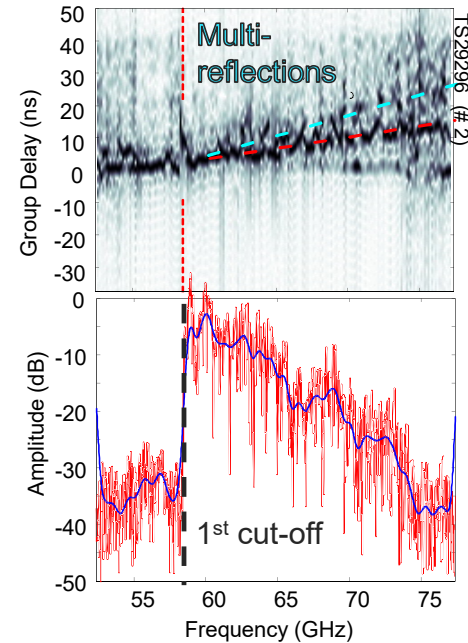
Tore Supra : Designed and operated in V-band X-mode

open WR-28 waveguides antennas



→ Reference signal

With plasma



- Installation constrains by limited place.
- Antennas with poor directivity.
- Convenient coupling for reference.

- First cut-off clearly identified.
- Signal losses due to low directivity.
- Multi-reflections issue.

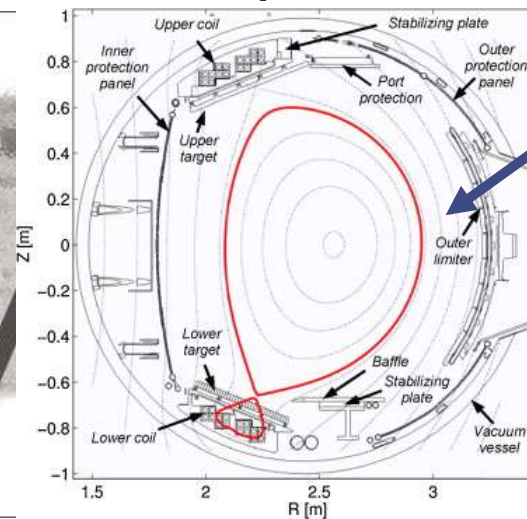


# From Tore Supra to WEST

**Circular shape  
carbon limiter**



**D-shape & X-point  
W - open divertor**



**Same B field  
but plasma  
further away.**

**Reflectometers  
evolution :**

**V-band X-mode (edge)  
W-band X-mode (core)  
D-band X-mode (center)**



**V-band O-mode (core)  
W-band X-mode (edge)  
D-band X-mode (center)**





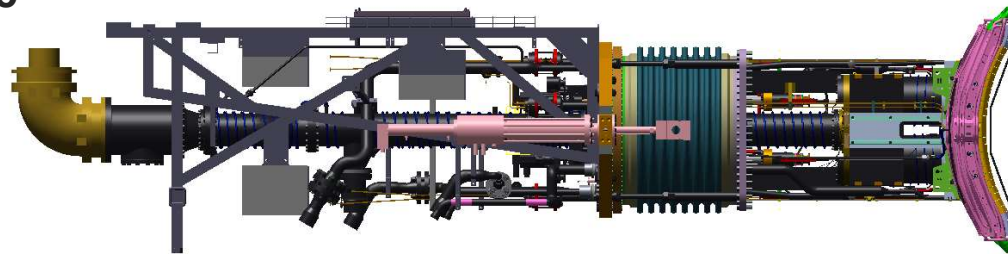
ASIPP



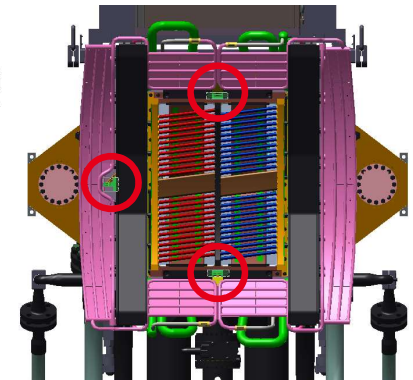
# Waveguides embedded in the ICRH Antenna

(SIFFER : Sino-French Fusion Energy center)

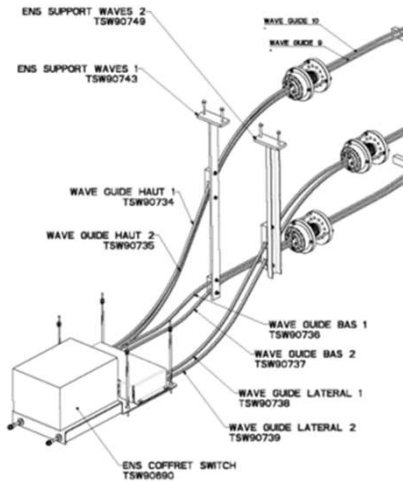
WEST : Embedded X-mode W-band reflectometer.



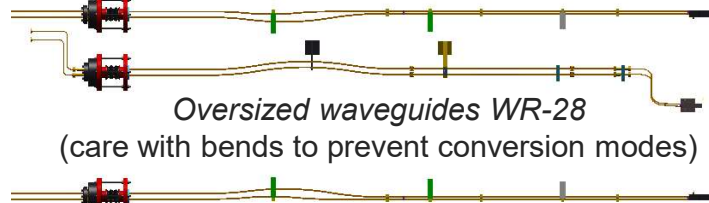
3 pairs of waveguides



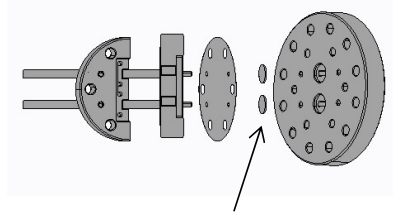
Top, bottom and lateral Measurements.



All the waveguides can be connected to one reflectometer



Oversized waveguides WR-28  
(care with bends to prevent conversion modes)



quartz windows for vacuum insulation

Provide "simultaneous" measurements at all three locations.

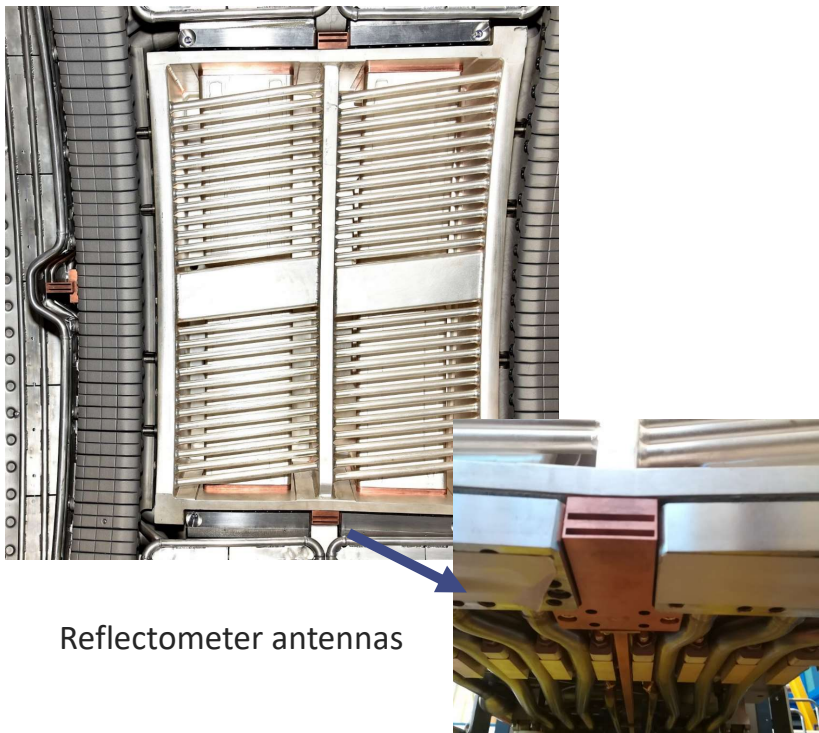


# Sectoral waveguide antennas

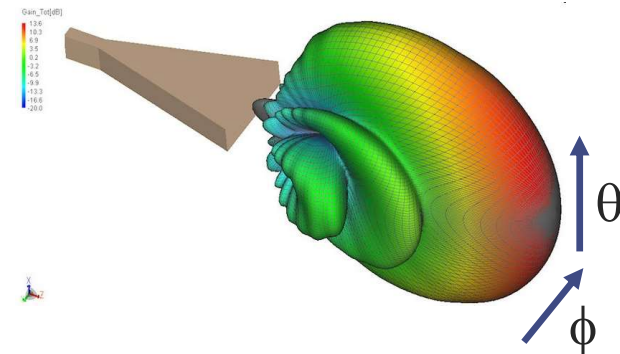
Provide comparable coupling signal with higher reflected signal amplitude

(designed and proposed for ITER-ICRH - Claret IRW11 2013)

ICRH launcher



Radiation pattern



## Sectoral antennas

- **Manage limited occupation.**
- **Better toroidal directivity.**
- **Still provide coupling reference.**

*Improved reflected signal by 20 dB  
Reflected / coupling signals ~ 30 dB*



# Experimental results

## Advertisement

- **ICRH reflectometry operates since 2024.**
- **“Normal” reflectometry had acquisition issue, available only at end of campaign.**
- **Present results are still in progress and will need further assessments.**

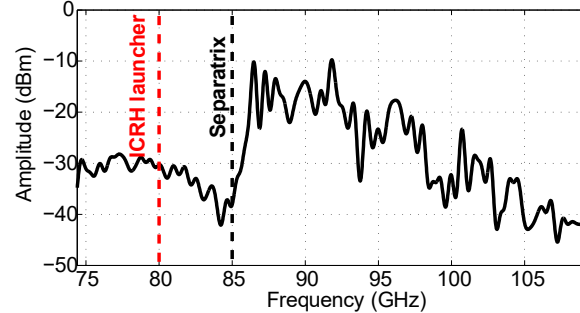
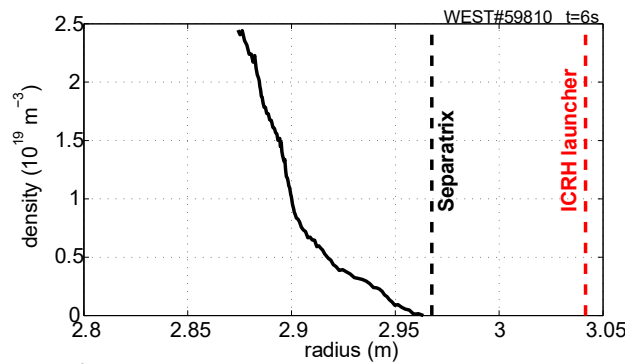


# ICRH - Lateral antennas

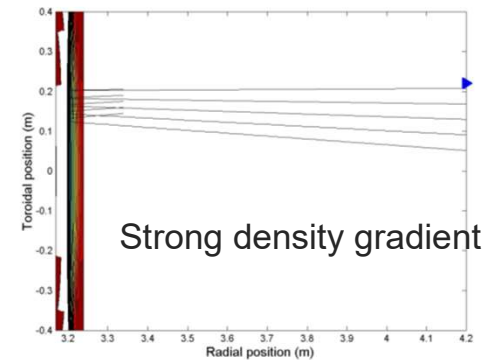
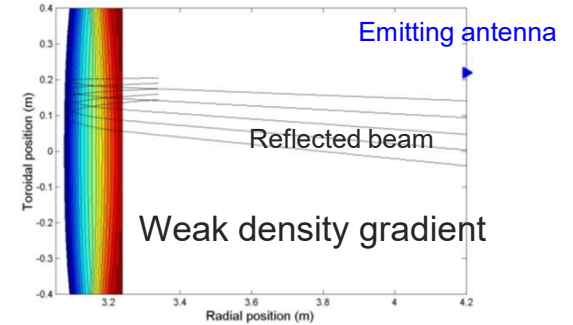


Angle to compensate for ripple

No plasma in the SOL !  
→ profile initialization issue



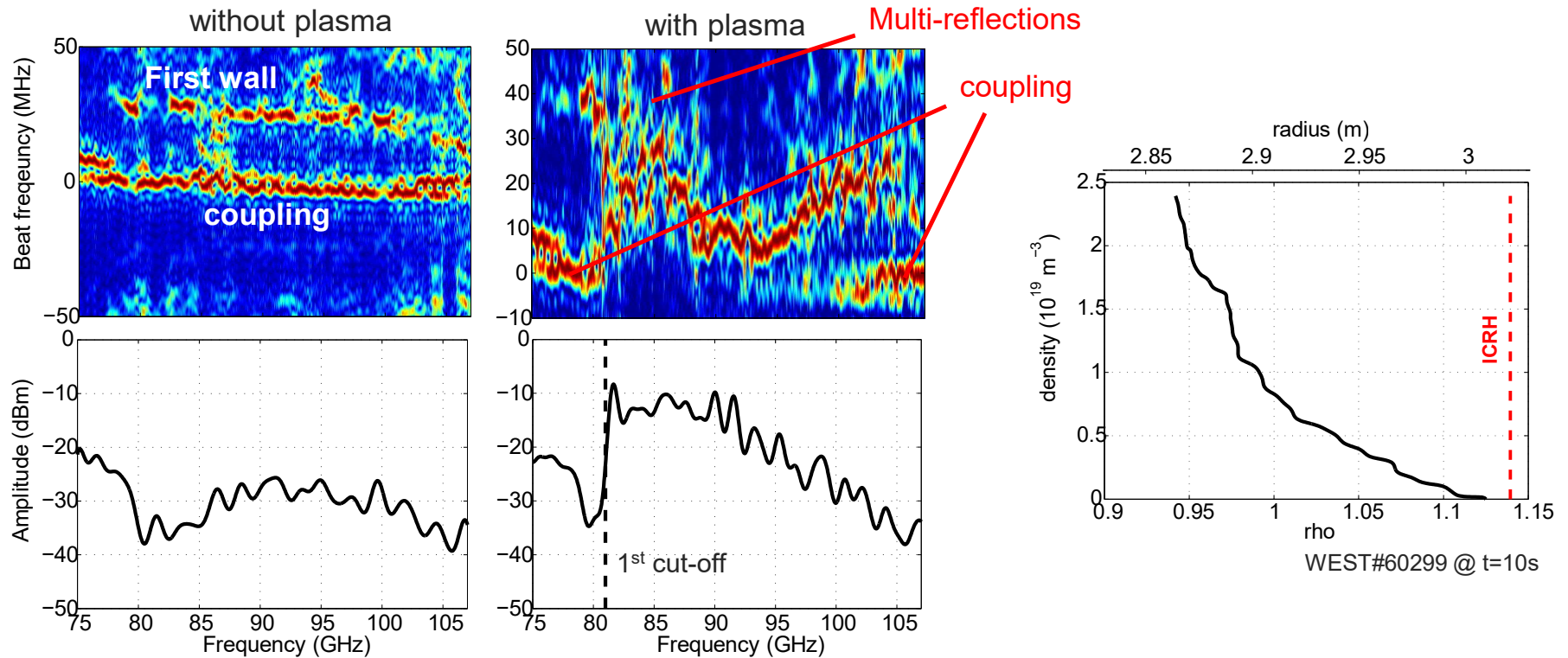
## Simulations



**Despite the corrected angle, the measurements still suffer amplitude losses due to the magnetic ripple (~ 6% on WEST) accentuated by the low density gradient in the SOL.**



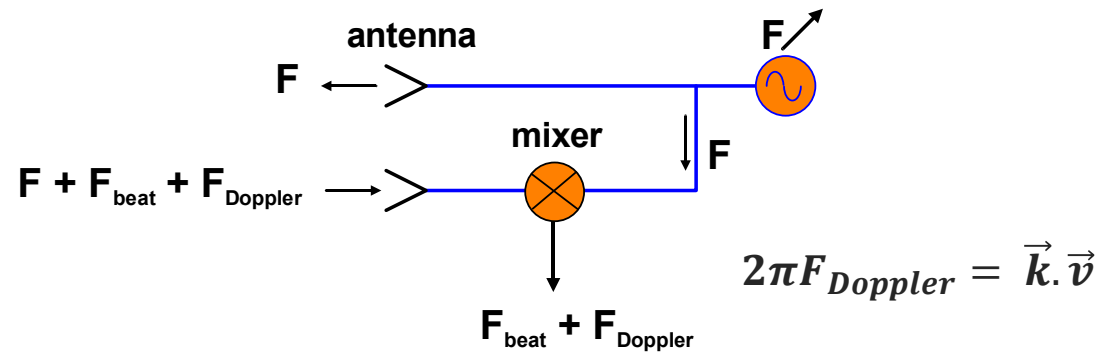
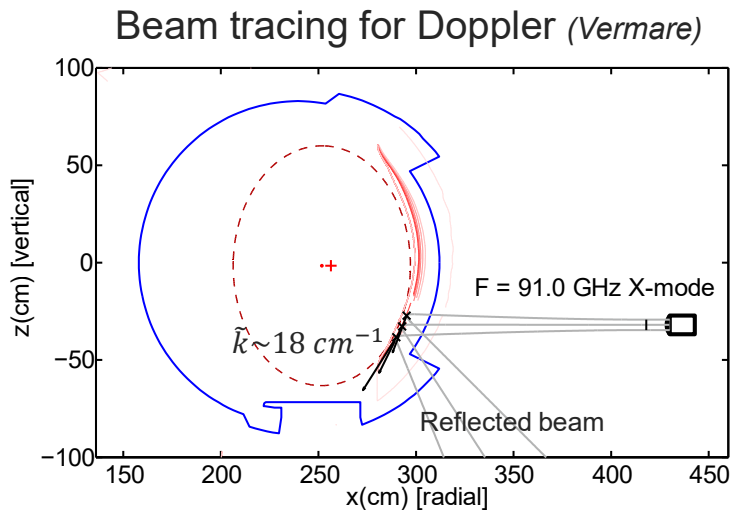
# ICRH - Lower antennas



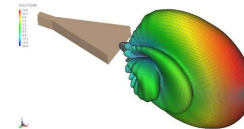
**Good radial coverage of the density profile for ICRH coupling studies.  
Still issues with multi-reflections but manageable with adequate signal processing...**



# Beam tracing & Doppler shift



Low poloidal directivity



$k \sim ?$  (but likely low  $k$  at the cut-off)

$v \sim$  up to tens km/s, positive & negative & radial dependent...

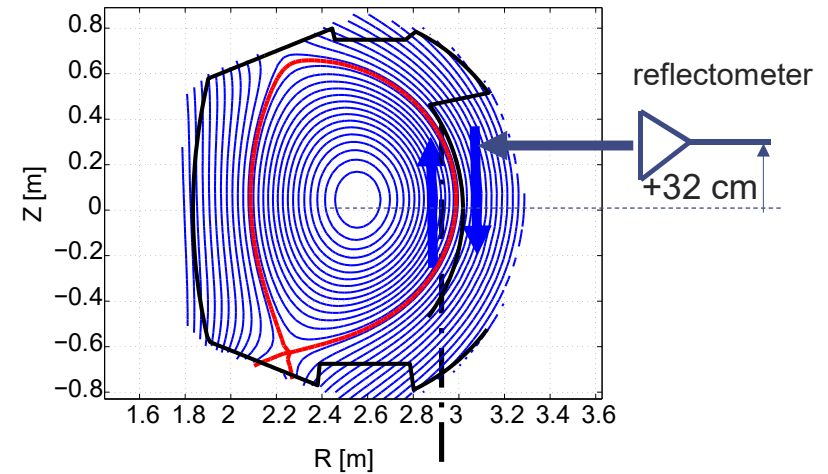
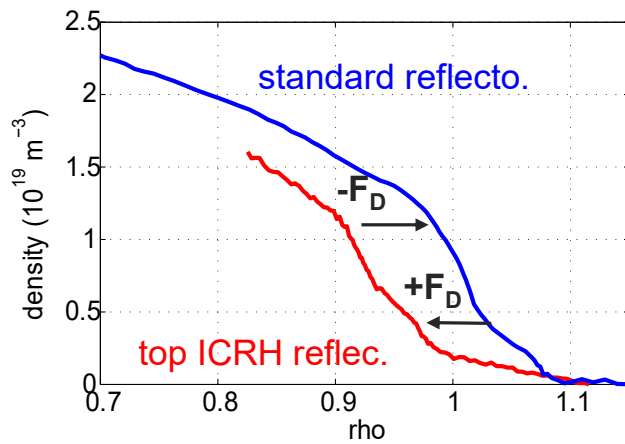
→ difficult estimation of  $F_{\text{Doppler}}$

Thanks to the low antenna directivity, the reflected signal can still be detected.  
But difficulty to figure out precisely where it is reflected...



# But likely affected by the poloidal rotation...

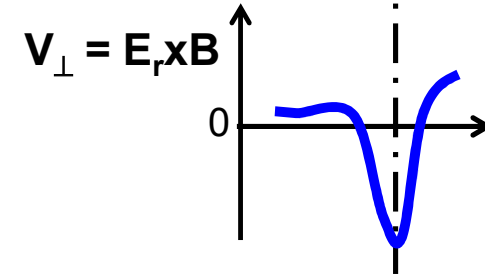
Profile exhibits radial shift compared with "standard" reflectometry



**Doppler effect due to poloidal rotation :**

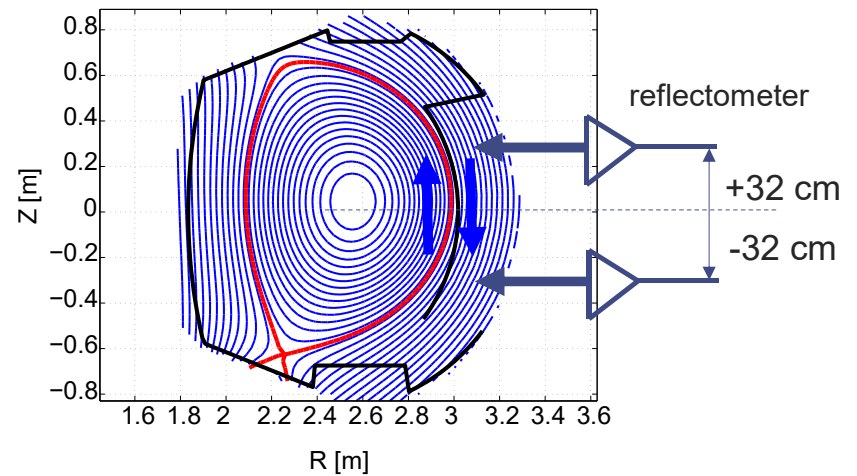
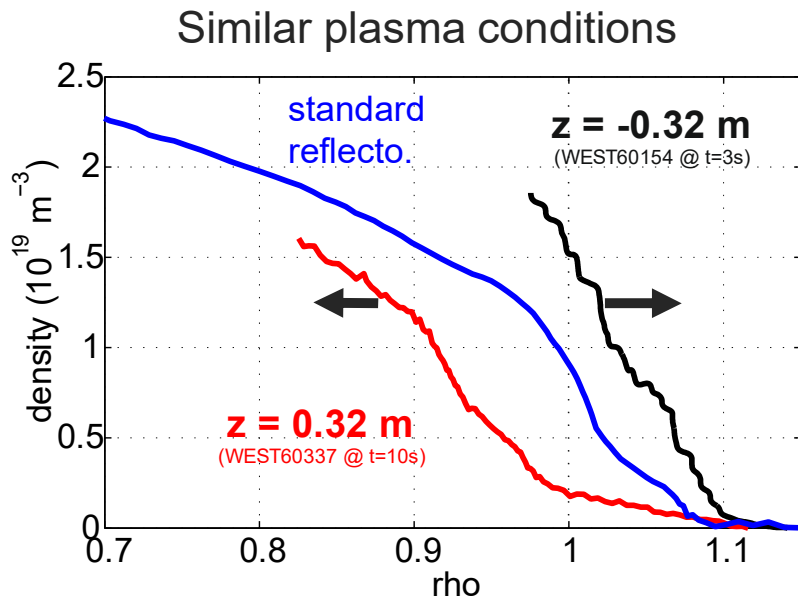
Fb ↗ in the SOL → distance increased

Fb ↘ in the Er well → distance decreased





# Comparison between up and down ICRH reflectometry



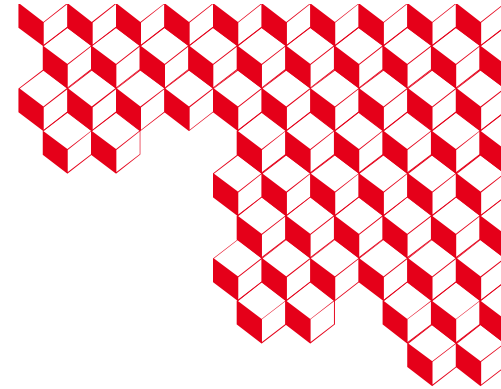
Depending on reflectometer positions the Doppler effect shifts the profiles inward or outward (as one would expect...)





# Summary

- Sector antennas provide interesting reference coupling as well as plasma reflected signals.
- Lateral ICRH antenna system appears to be ineffective due to ripple and power losses...
- Use ultra-fast sweep capabilities to neglect the Doppler shift relative to the beat frequency.
- Perform consecutive frequency sweeps, ramping up ( $F_b + F_D$ ) then ramping down ( $-F_b + F_D$ ), to compensate the Doppler shift and to measure it by post-processing.
- Use it as a simple Doppler reflectometer.



**Thank you for your attention**