



HAL
open science

Overview of alpha particule and fast ion studies in JET DTE2 plasmas

Jeronimo GARCIA, R Dumont, Y Kazakov, D Keeling, M Fitzgerald, P Mantica, M Nocente, S Sharapov, D Zarzoso, P J Bonofiglo, et al.

► To cite this version:

Jeronimo GARCIA, R Dumont, Y Kazakov, D Keeling, M Fitzgerald, et al.. Overview of alpha particule and fast ion studies in JET DTE2 plasmas. 29th IAEA Fusion Energy Conference (FEC 2023), Oct 2023, Londres, United Kingdom. cea-04566125

HAL Id: cea-04566125

<https://cea.hal.science/cea-04566125>

Submitted on 2 May 2024

HAL is a multi-disciplinary open access archive for the deposit and dissemination of scientific research documents, whether they are published or not. The documents may come from teaching and research institutions in France or abroad, or from public or private research centers.

L'archive ouverte pluridisciplinaire **HAL**, est destinée au dépôt et à la diffusion de documents scientifiques de niveau recherche, publiés ou non, émanant des établissements d'enseignement et de recherche français ou étrangers, des laboratoires publics ou privés.



OVERVIEW OF ALPHA PARTICLE AND FAST ION STUDIES IN JET DTE2 PLASMAS

J. Garcia

CEA, IRFM, F-13108 Saint-Paul-lez-Durance, France.

JET



This work has been carried out within the framework of the EUROfusion Consortium, funded by the European Union via the Euratom Research and Training Programme (Grant Agreement No 101052200 — EUROfusion). Views and opinions expressed are however those of the author(s) only and do not necessarily reflect those of the European Union or the European Commission. Neither the European Union nor the European Commission can be held responsible for them.

Contributors



¹R. DUMONT, ²Y. KAZAKOV, ³D. KEELING, ³M. FITZGERALD, ⁴P. MANTICA, ⁵M. NOCENTE, ³S. SHARAPOV, ⁶D. ZARZOSO, ⁷P. J. BONOFI GLO, ⁸R. COELHO, ⁹M. DREVAL, ³V. G. KIPTILY, ¹⁰E. de la LUNA, ¹S. MAZZI, ²J. ONGENA, ⁷M. PODESTA, ³Z. STANCAR, ¹¹R. A. TINGUELY, ¹²J. VARELA, ³C. MAGGI, ³J. MAILLOUX and JET CONTRIBUTORS^a

¹CEA, IRFM, F-13108 Saint-Paul-lez-Durance, France.

²Laboratory for Plasma Physics, LPP-ERM/ KMS, TEC Partner, Brussels, Belgium

³UKAEA, Abingdon, United Kingdom

⁴Istituto per la Scienza e Tecnologia Dei Plasmi, Consiglio Nazionale Delle Ricerche, Milano, Italy

⁵Dipartimento di Fisica 'G. Occhialini', Università di Milano-Bicocca, Milano, Italy

⁶Aix-Marseille Université, CNRS, Centrale Marseille, M2P2 UMR 7340, Marseille, France

⁷Princeton Plasma Physics Laboratory, Princeton, NJ, United States

⁸Instituto de Plasmas e Fusao Nuclear, Instituto Superior Técnico, Universidade de Lisboa, 1049-001 Lisboa, Portugal.

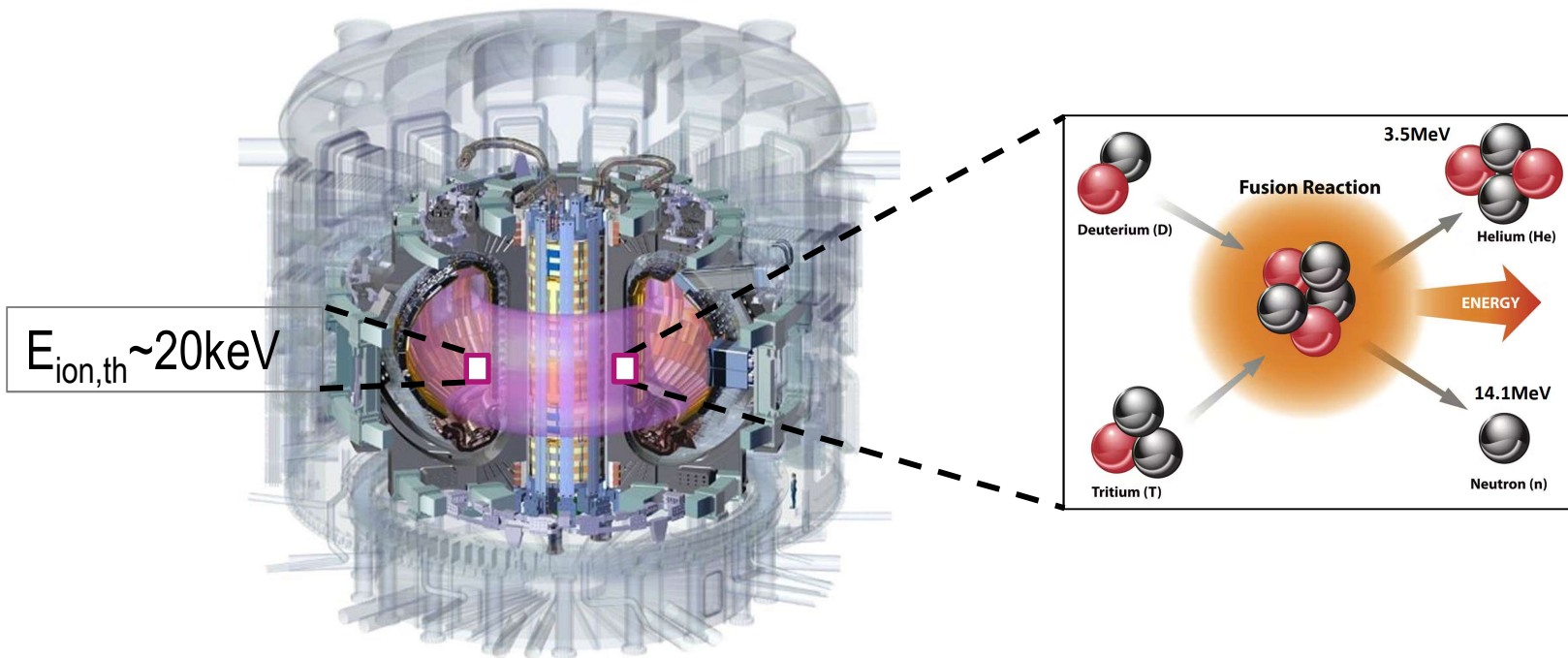
⁹Institute of Plasma Physics, National Science Center, Kharkiv Institute of Physics and Technology, Kharkiv, Ukraine

¹⁰Laboratorio Nacional de Fusion, CIEMAT, 28040 Madrid, Spain

¹¹MIT Plasma Science and Fusion Center, Cambridge, USA

¹²Universidad Carlos III de Madrid, 28911 Leganes, Madrid, Spain

3.5MeV alpha particles: key pillar for fusion energy production by plasmas

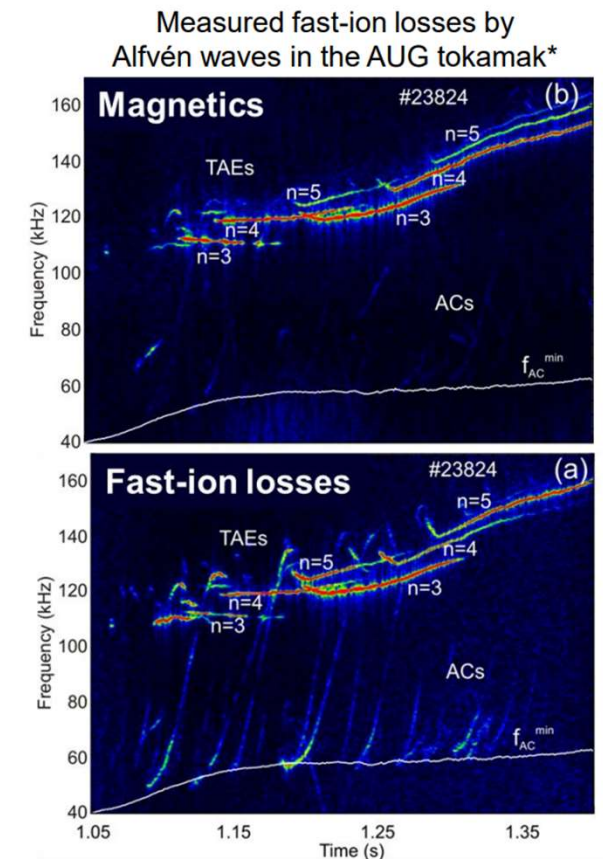


- Fusion produced **3.5MeV alpha particles** → **self heating of plasmas** through collisions
- Presence of T and α particles → Significant differences compared to D plasmas

Impact of α 's in DT burning plasmas



- α 's can interact with Alfvén waves \rightarrow α transport and losses

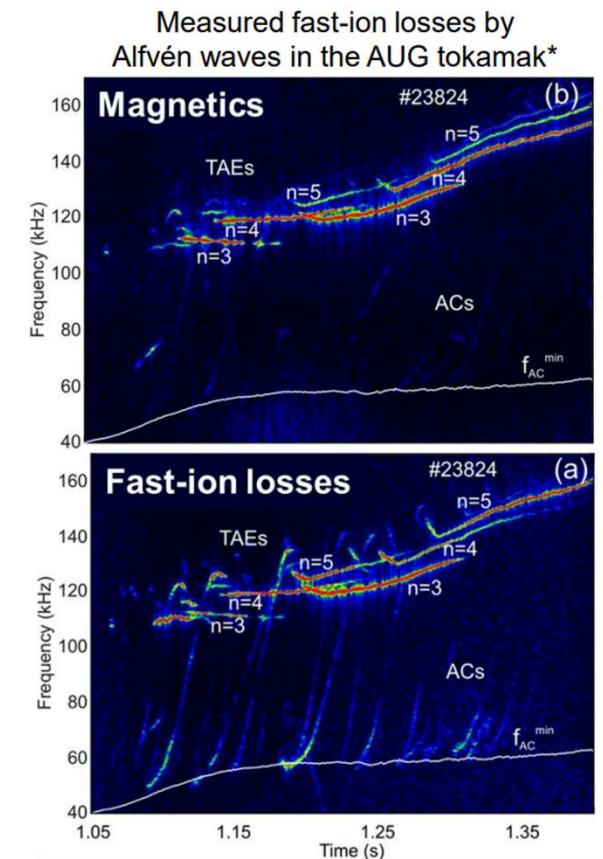


[M. Garcia-Munoz PRL (10)]

Impact of α 's in DT burning plasmas



- α 's can interact with Alfvén waves \rightarrow α transport and losses
- α 's transfer energy mostly to electrons by collisions \rightarrow High electron heating

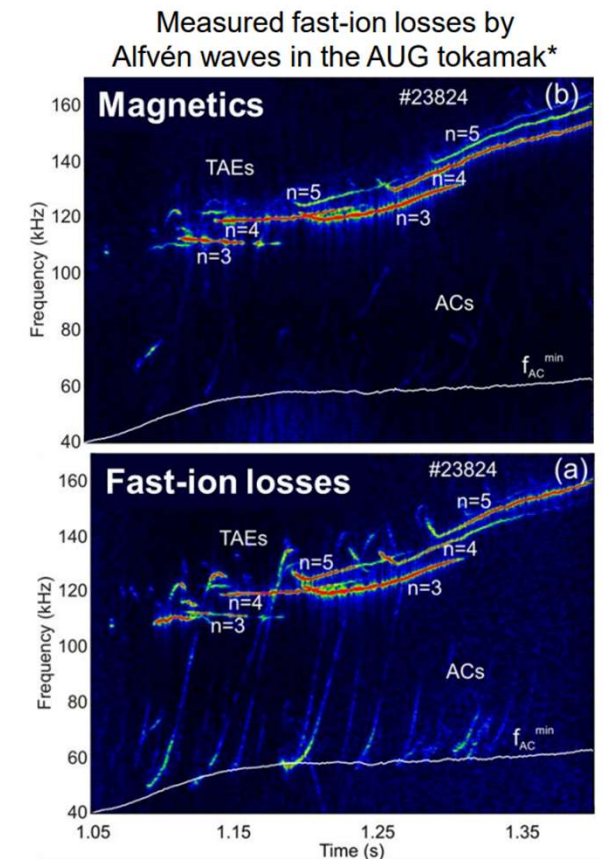


[M. Garcia-Munoz PRL (10)]

Impact of α 's in DT burning plasmas



- α 's can interact with Alfvén waves \rightarrow α transport and losses
- α 's transfer energy mostly to electrons by collisions \rightarrow High electron heating
- α 's do not provide significant torque \rightarrow Low rotation



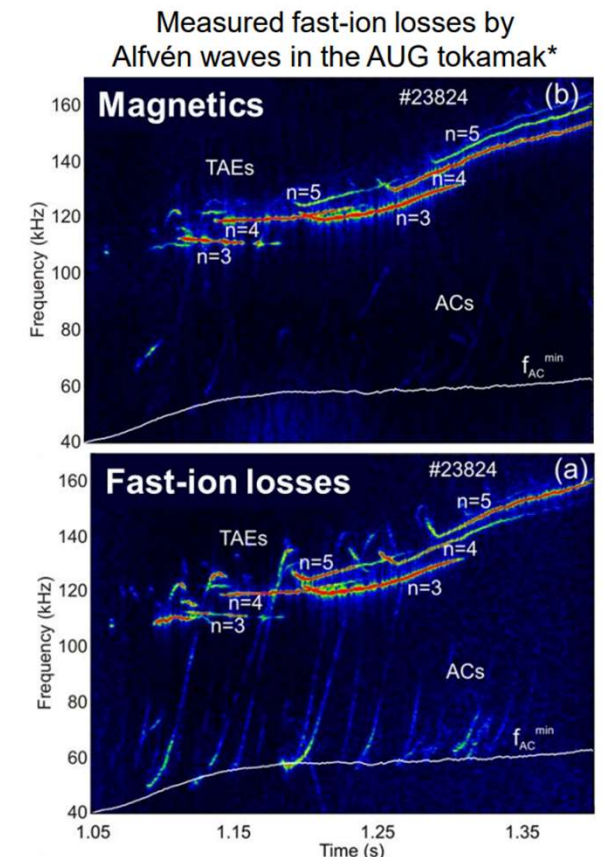
[M. Garcia-Munoz PRL (10)]

Impact of α 's in DT burning plasmas



- α 's can interact with Alfvén waves \rightarrow α transport and losses
- α 's transfer energy mostly to electrons by collisions \rightarrow High electron heating
- α 's do not provide significant torque \rightarrow Low rotation

Potential negative plasma conditions



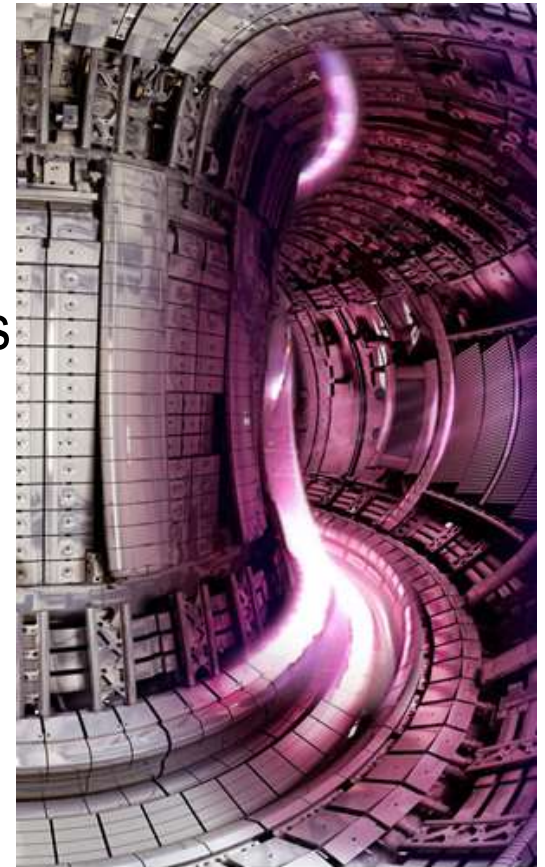
[M. Garcia-Munoz PRL (10)]

JET-DTE2: key α particle and fast ions studies



Exploration of DT key physics towards the tokamak reactor

- Alfvén eigenmodes destabilization
- α particle heating
- Low torque, high electron heated plasmas with MeV ions
- α particle losses



JET-DTE2: key α particle and fast ions studies

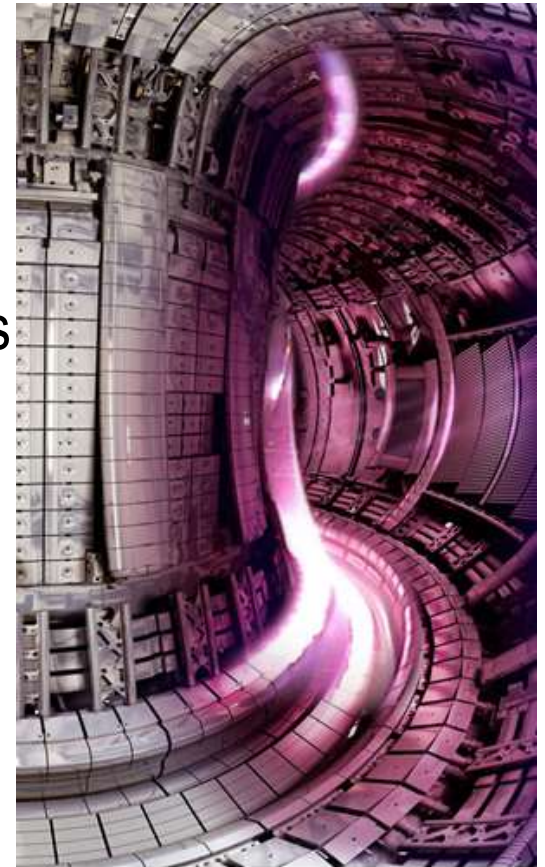


Exploration of DT key physics towards the tokamak reactor

- Alfvén eigenmodes destabilization
- α particle heating
- Low torque, high electron heated plasmas with MeV ions
- α particle losses

Improved capabilities compared to DTE1:

- Better fast ion diagnostics
- More heating power
- Sophisticated Modelling



Outline

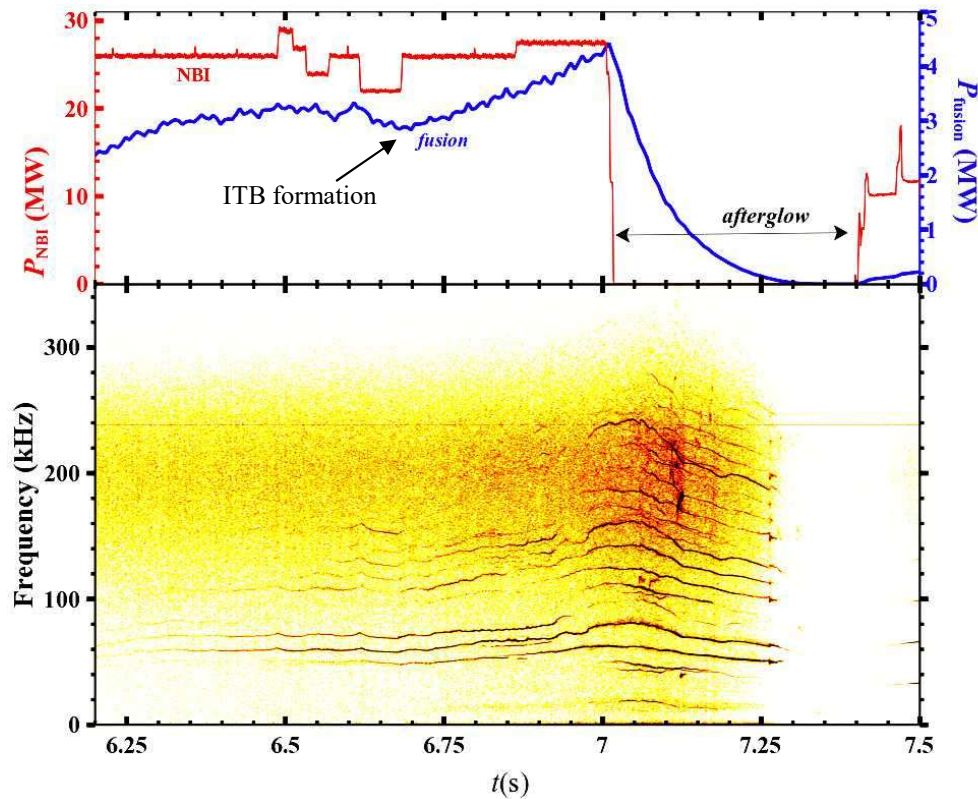


- Alfvén activity destabilized by α particles
- α heating
- Exploration of D-T plasmas in ITER core conditions
- α transport and losses
- Conclusions

Afterglow plasmas developed



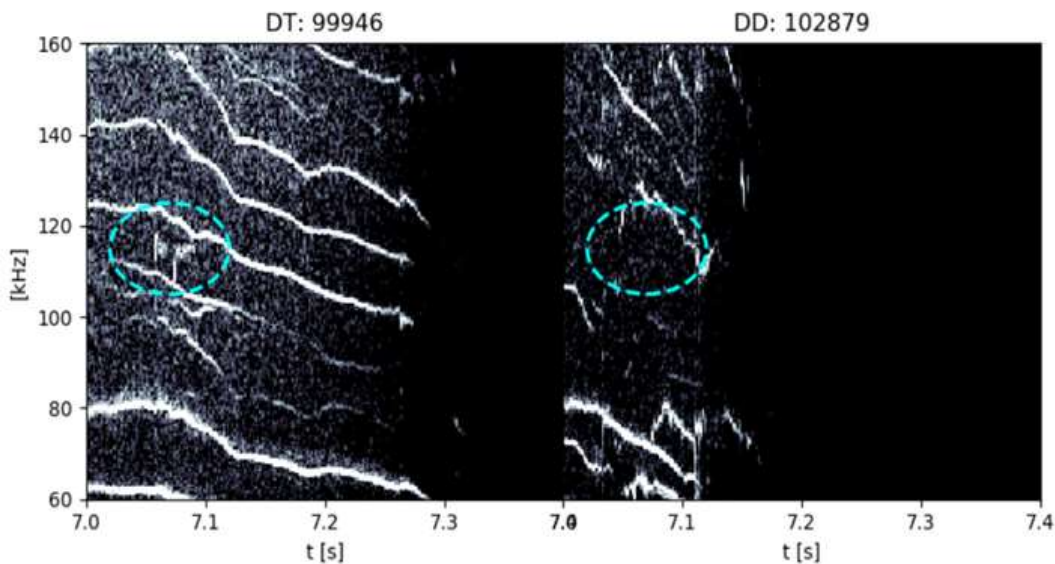
#99946 $I_p=2.9\text{MA}$, $B_t=3.45\text{T}$



[Fitzgerald NF 23]

- TAE generation by α studied in **afterglow scenario**
- Scenario previously performed in TFTR [Nazikian PRL 97]
- ITB developed at $q_0 \sim 2$ before the afterglow

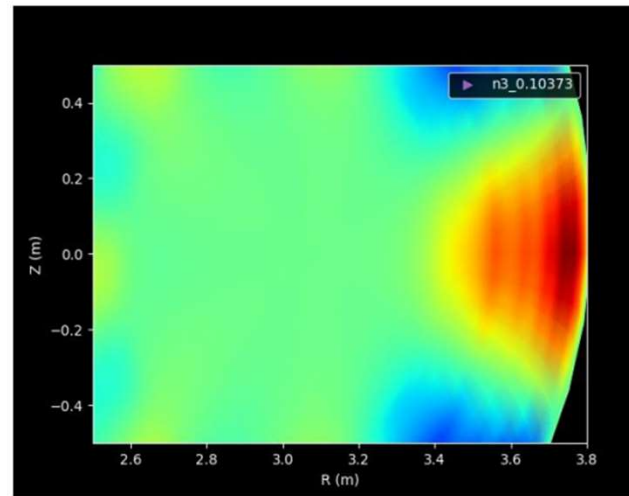
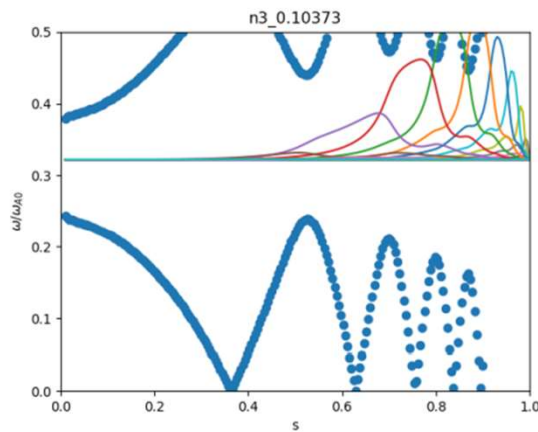
High frequency perturbations in afterglow plasmas



- TAE generation by α studied in **afterglow scenario**
- Scenario previously performed in TFTR [Nazikian PRL 97]
- ITB developed at $q_0 \sim 2$ before the afterglow
- **DT vs D: clear differences in high frequency perturbations**

[Fitzgerald NF 23]

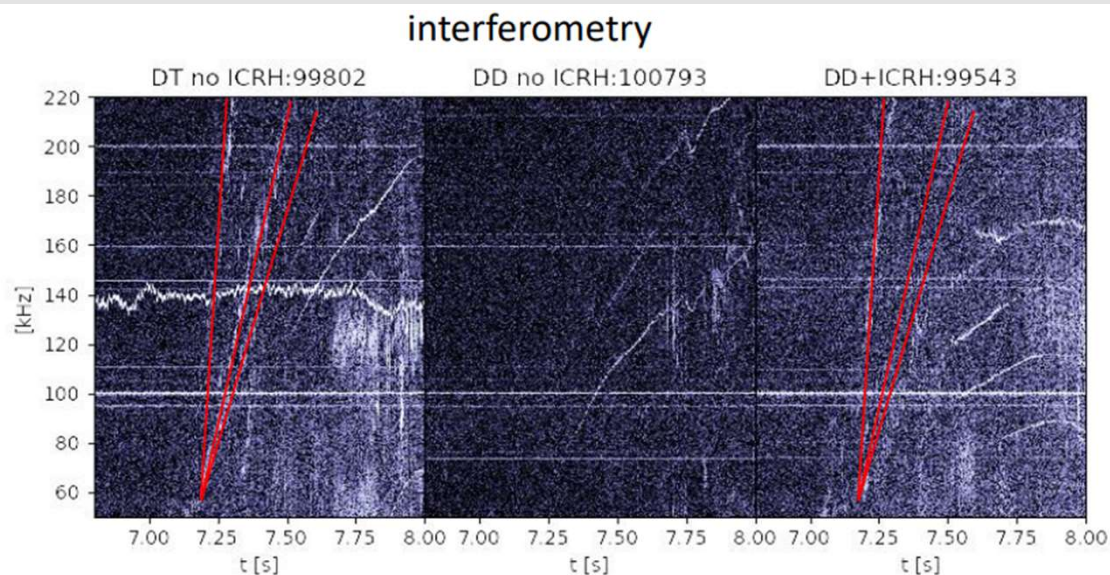
TAE mode identification in afterglow plasmas



[Fitzgerald NF 23]

- Identification of mode performed with MISHKA and HALO codes
- **$n=3$ TAE destabilized by α 's** compatible with mode observed
- Precessional motion of alphas resonates with the toroidal phase velocity of TAE

Alfvén cascades in afterglow plasmas

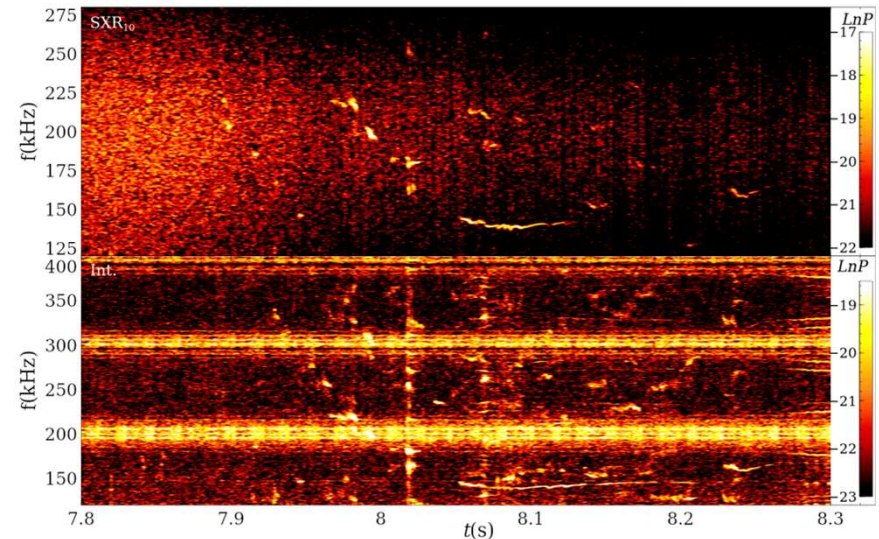
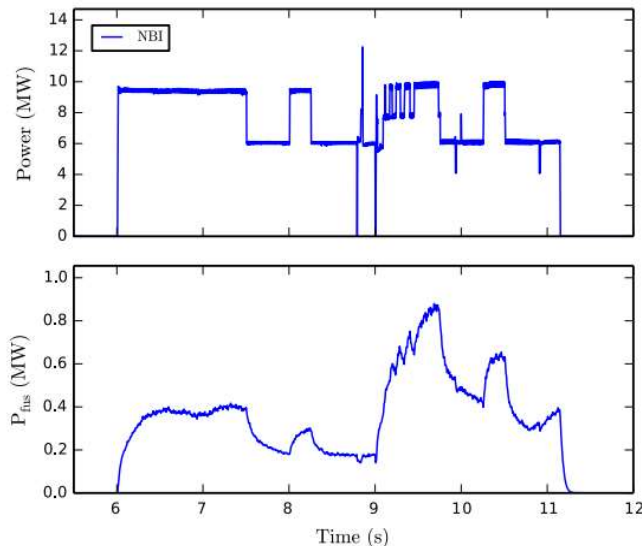


- Afterglow performed in $q_0 \sim 1$ scenario with $P_{fus} \sim 11 \text{ MW}$
- Alfvén cascades in DT (without ICRH) and D (with ICRH)
- Strong indication of α driven instabilities

Alternative route to destabilize α driven modes



#99500 $I_p=2.5\text{MA}$, $B_t=3.7\text{T}$



[Sharapov NF 23]

[Oliver NF 23]

[Sharapov this conference

#2305]

- NBI modulation in DT plasmas \rightarrow **Bump-on Tail α distribution** $\frac{\partial f}{\partial E} > 0$
- On axis, $\rho \sim 0.2$, high frequency perturbations not observed in D
- Possible candidates: **kinetic Alfvén waves (KAW)**

Outline

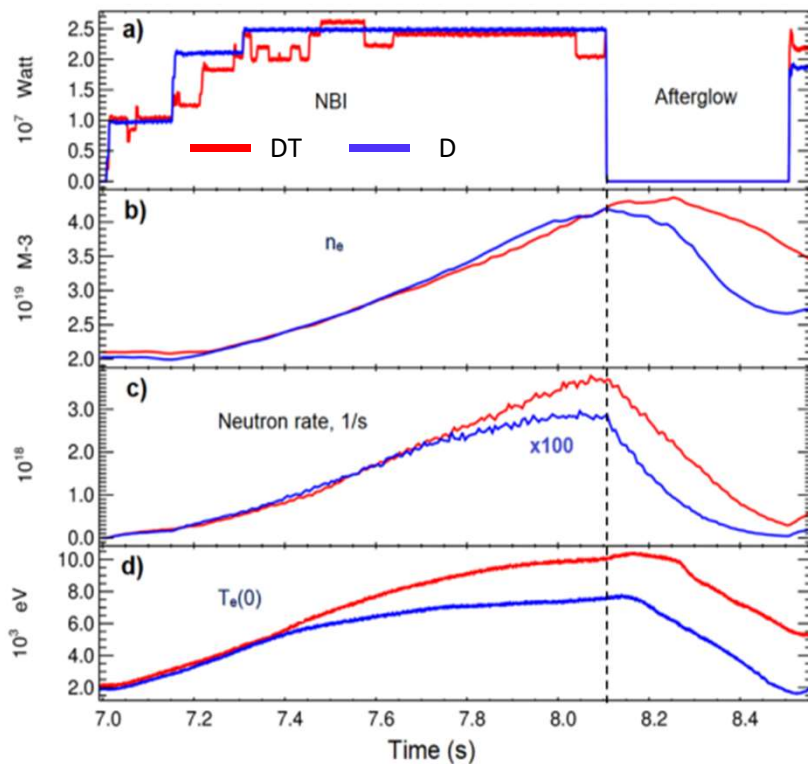


- Alfvén activity destabilized by α particles
- α heating
- Exploration of D-T plasmas in ITER core conditions
- α transport and losses
- Conclusions

Afterglow scenario used to demonstrate alpha heating



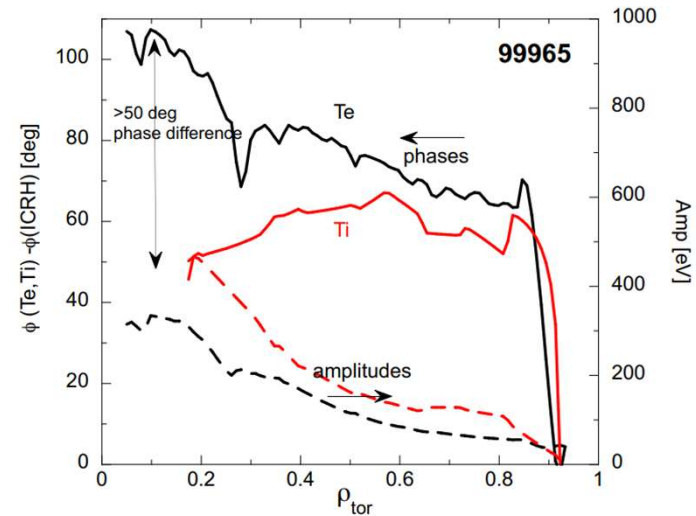
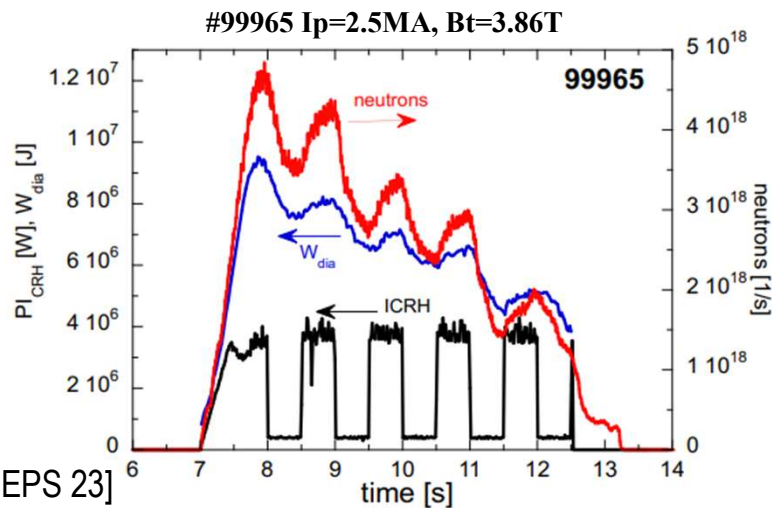
#99801, #100793 $I_p=2.3\text{MA}$, $B_t=3.45\text{T}$



[Kiptily PRL 23] [Kiptily this conference #1836]

- Afterglow scenario \rightarrow α 's slowing down time longer than NBI ions
- Different T_e evolution in DT and D \rightarrow **α heating**
- Further evidence of α electron heating obtained in gyrokinetic simulations [Disiena this conference #1892]

α power modulation and electron heating



[Casiraghi EPS 23]

[Mantica this conference #1774]

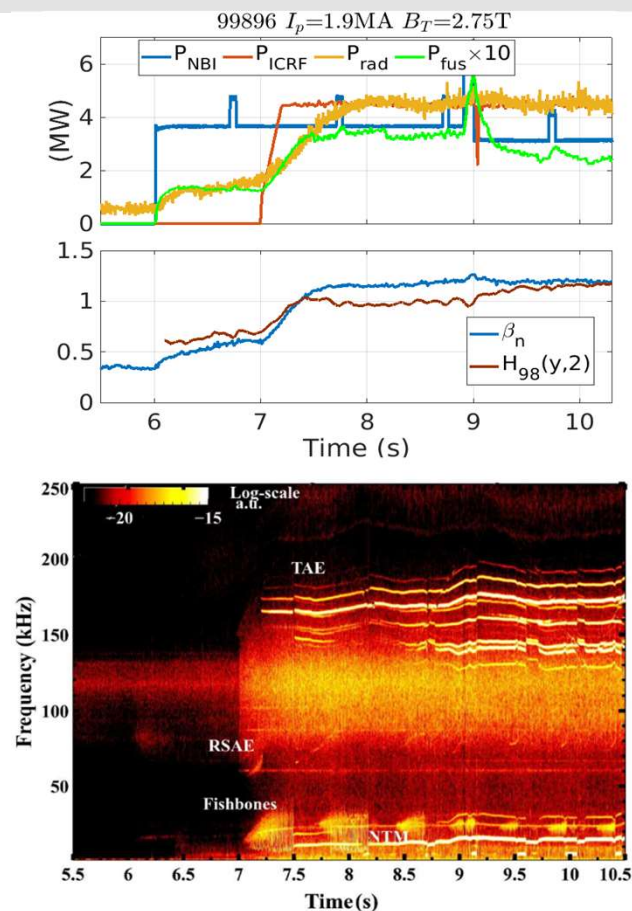
- ICRH modulation performed \rightarrow α modulation
- High phase delay between T_e and T_i time evolution
- Indication of α heating to the electrons

Outline



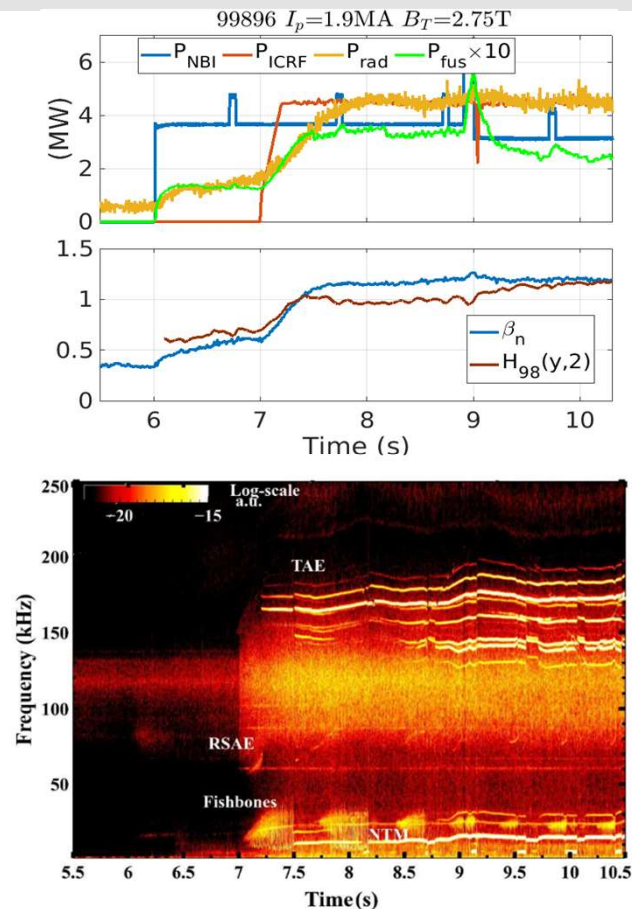
- Alfvén activity destabilized by α particles
- α heating
- Exploration of D-T plasmas in ITER core conditions
- α transport and losses
- Conclusions

Exploration of core burning plasmas characteristics



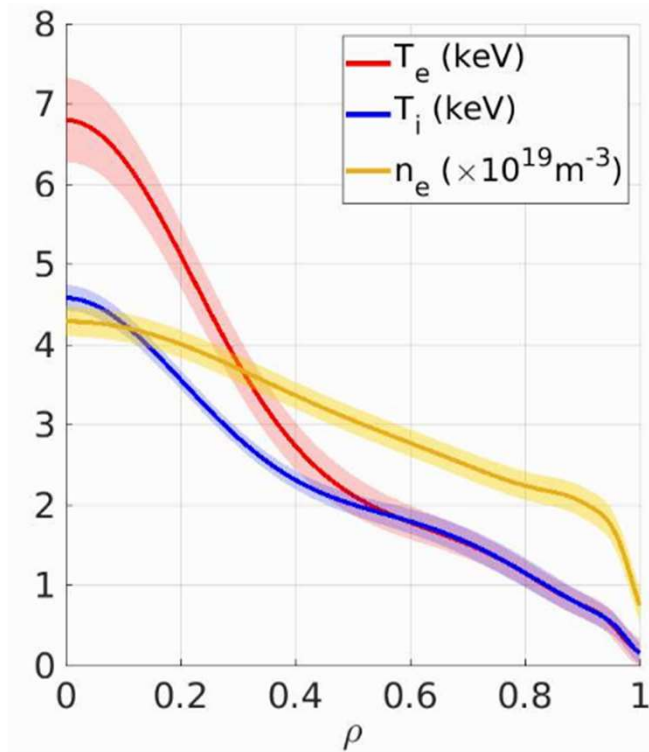
- DT plasmas explored in **core ITER relevant conditions**:
 - High heating fraction to electrons (~60%) (1% H minority)
 - Low input torque
 - Destabilized fast ion modes

Exploration of core burning plasmas characteristics



- DT plasmas explored in **core ITER relevant conditions:**
 - High heating fraction to electrons ($\sim 60\%$) (1% H minority)
 - Low input torque
 - Destabilized fast ion modes
- High confinement obtained: $H_{98}(y,2) \geq 1$
 - Low core transport: $Q_{e,i} \sim 0.5\text{GB}$
 - 15% better confinement in DT than D

High core electron heating with ICRF

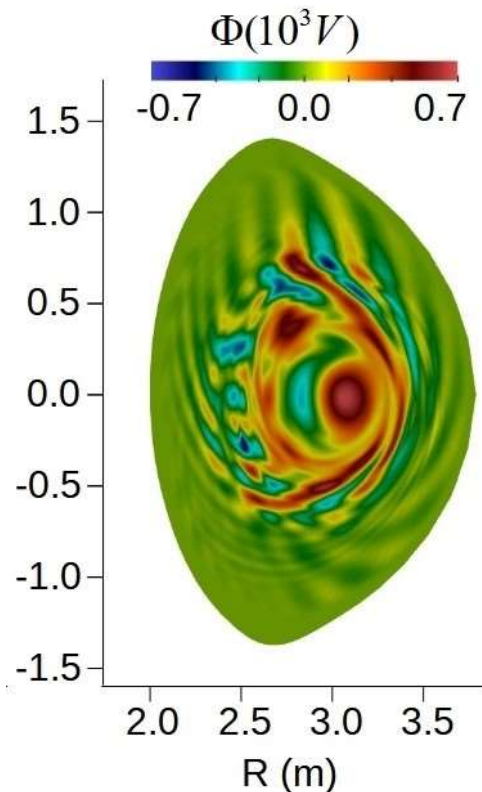


- High electron heating and low torque:
 $T_e/T_i \sim 1.4$, $M_{\text{ach}} = 0.12$

Fast ion perturbations simulated



Non-linear global gyrofluid simulations with
FAR3d code

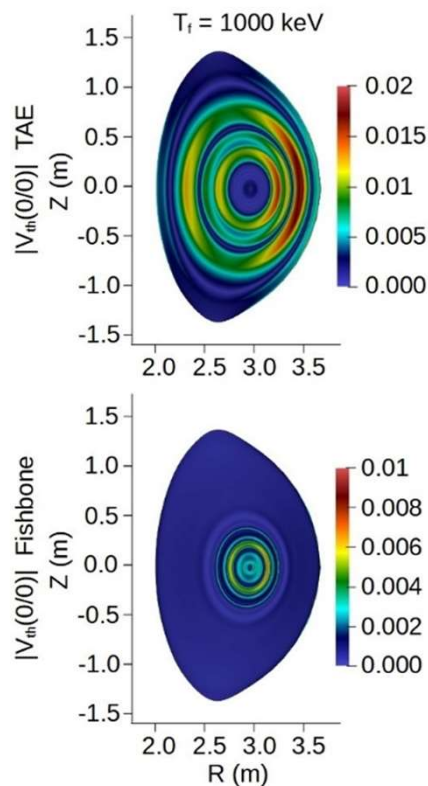


- High electron heating and low torque:
 $T_e/T_i \sim 1.4$, $M_{ach} = 0.12$
- Core fast ions perturbations reproduced
considering **ICRF accelerated ions**

Zonal activity induced by perturbations



Non-linear global gyrofluid simulations with FAR3d code

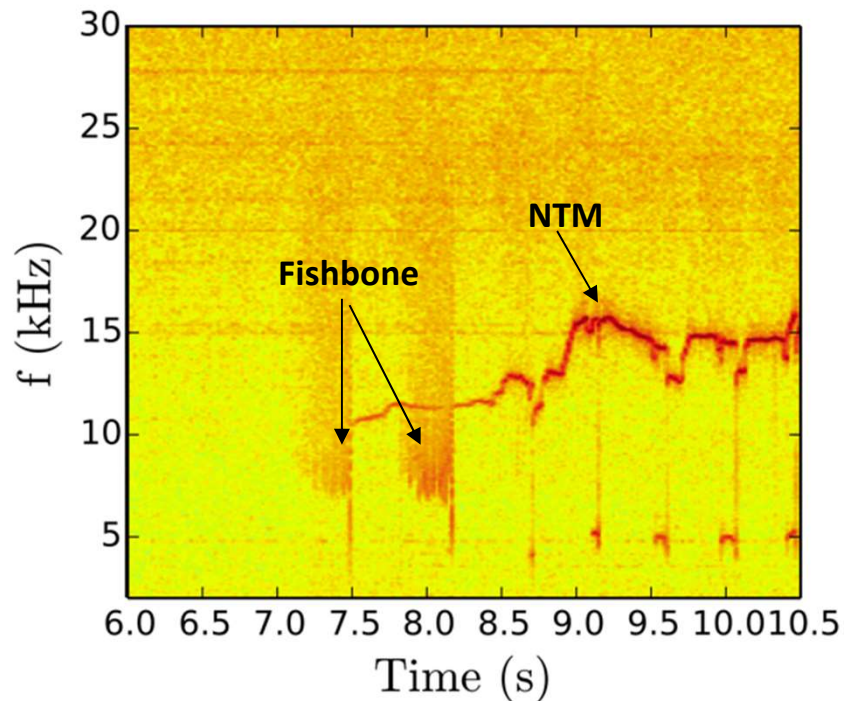


- High electron heating and low torque:
 $T_e/T_i \sim 1.4$, $M_{ach} = 0.12$
- Core fast ions perturbations reproduced considering **ICRF accelerated ions**
- Fishbone and TAE generate zonal structures
- **Zonal activity leads to reduced ion thermal transport**
- No evidence of T_i clamping at 90% of electron heating

α particle losses and transport

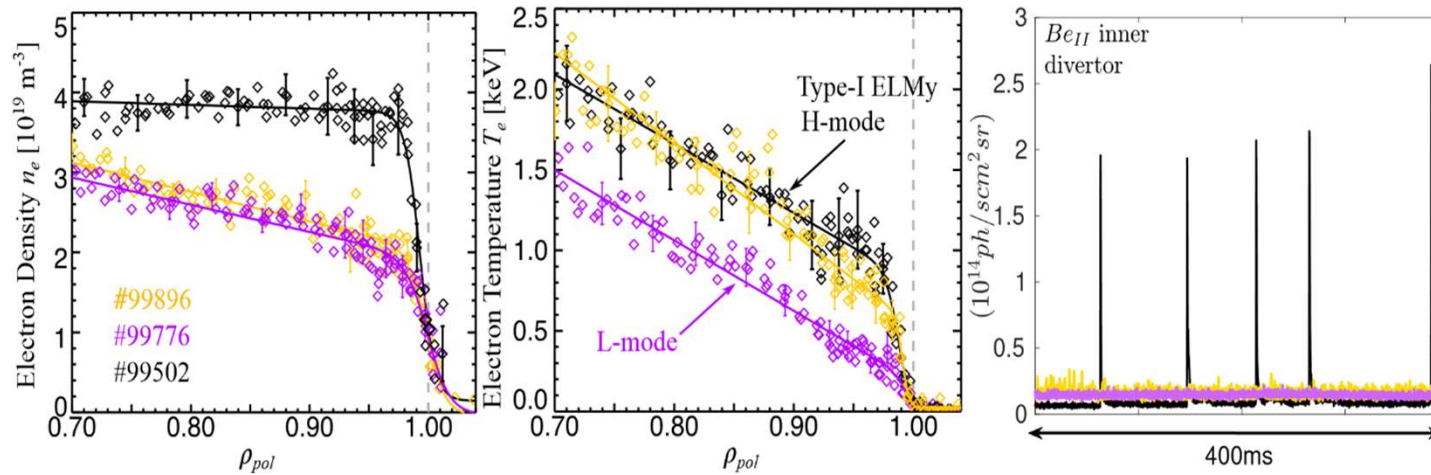


FILD measurements



- **Non-linear coupling**: induced α transport and losses by **fishbone**
- No losses detected from TAE but substantial from NTM
- **Magnetic perturbations optimization is necessary**

I-mode like plasma regime



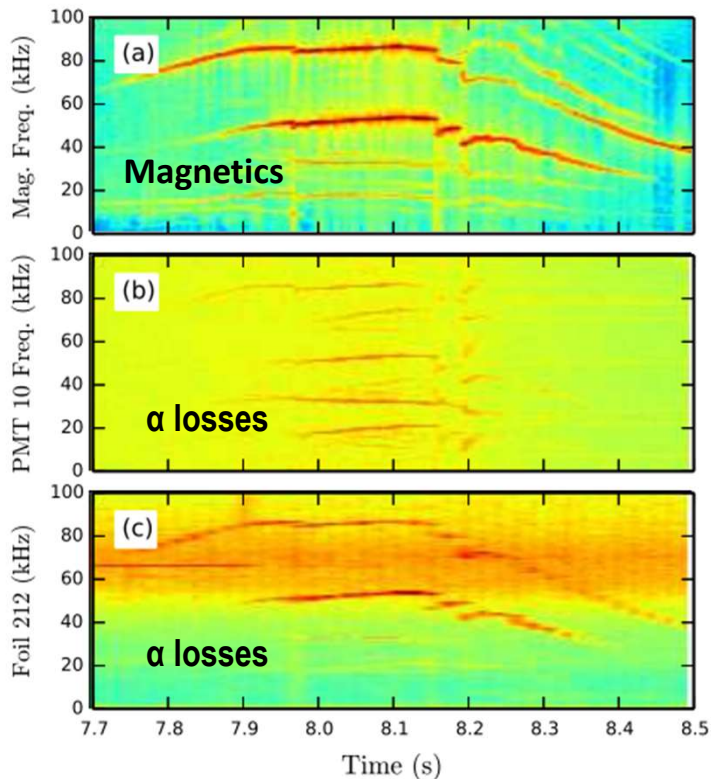
- High confinement regime **similar to I-mode**...
- ...but standard $B \times \nabla B$ used and edge WCM not detected
- Plasma regime close to L-H transition

Outline



- Alfvén activity destabilized by α particles
- α heating
- Exploration of D-T plasmas in ITER core conditions
- α transport and losses
- Conclusions

α particle losses detection in DTE2



- Detected prompt α losses $\sim 7\%$
- Detected low frequency MHD α losses $\sim 5\%$
 - Fishbone, NTM, Kink
- Overprediction of the neutron rate in TRANSP with no α transport [Stancar this conference #1889]

[Kiptily this conference #1836][Bonfiglio this conference #1991]

Outline



- Alfvén activity destabilized by α particles
- α heating
- Exploration of D-T plasmas in ITER core conditions
- α transport and losses
- **Conclusions**

Conclusions



- Several expected α particle effects confirmed in JET-DTE2
 - Alfvén modes destabilization
 - Electron heating
 - Prompt and coherent losses
- High confinement in DT plasmas with ITER core conditions
- DT plasmas show significant differences compared to D → More experiments needed