



HAL
open science

European edge fluid modelling tools towards self-consistent reactor-relevant conditions

P Tamain, G Brethes, H Bufferand, M Capasso, S Carli, A J Coelho, R
Coosemans, A Coroado, W Dekeyser, J Fausty, et al.

► To cite this version:

P Tamain, G Brethes, H Bufferand, M Capasso, S Carli, et al.. European edge fluid modelling tools towards self-consistent reactor-relevant conditions. FEC 2023 - 29th IAEA Fusion Energy Conference, Oct 2023, Londres, United Kingdom. cea-04509894

HAL Id: cea-04509894

<https://cea.hal.science/cea-04509894>

Submitted on 18 Mar 2024

HAL is a multi-disciplinary open access archive for the deposit and dissemination of scientific research documents, whether they are published or not. The documents may come from teaching and research institutions in France or abroad, or from public or private research centers.

L'archive ouverte pluridisciplinaire **HAL**, est destinée au dépôt et à la diffusion de documents scientifiques de niveau recherche, publiés ou non, émanant des établissements d'enseignement et de recherche français ou étrangers, des laboratoires publics ou privés.



European edge fluid modelling tools towards self-consistent reactor-relevant conditions

¹P. Tamain*, ²G. Brethes, ¹H. Bufferand, ²M. Capasso, ³S. Carli, ⁴A.J. Coelho, ³R. Coosemans, ⁴A. Corrado, ³W. Dekeyser, ²J. Fausty, ⁵Y. Marandet, ⁶A.H. Nielsen, ⁶A.S. Poulsen, ⁵M. Raghunathan, ⁴P. Ricci, ¹N. Rivals, ⁷A. Stegmeir, ⁴L. Stenger, ⁸D. Tskhakaya, ⁶M. Wiesenberger, ⁷W. Zholobenko

¹CEA, IRFM, Saint-Paul-lez-Durance, France

²Aix-Marseille Univ, CNRS, Centrale Marseille, M2P2, Marseille, France

³KU Leuven, Department of Mechanical Engineering, Leuven, Belgium

⁴Ecole Polytechnique Fédérale de Lausanne (EPFL), Swiss Plasma Center (SPC), Lausanne, Switzerland

⁵Aix-Marseille Univ., CNRS, PIIM, Marseille, France

⁶Department of Physics, Technical University of Denmark (DTU), Denmark

⁷Max-Planck-Institut für Plasmaphysik, Garching, Germany

⁸Institute of Plasma Physics of the CAS, Prague, Czech Republic

* E-mail: patrick.tamain@cea.fr

BACKGROUND

- Project gathering European expertise to progress towards **self-consistent fluid modelling of the edge plasma in reactor-relevant conditions** (EUROfusion TSVV3)
- Strategy: progressively incorporate in turbulence codes necessary ingredients to model divertor regimes

	Self-consist. \perp transport	Neutrals	Impurities	Plasma and wall geom.	3D equilibria	Acceptable runtime
Mean-field		✓	✓	✓	~	~
Turbulence	✓					

- 4 edge turbulence codes involved: **FELTOR, GBS, GRILLIX, SOLEDGE3X**

MODELS

Upstream development of models:

- revised **sheath BC** for highly collisional conditions: [D. Tskhakaya, in prep.]

$$M_{\parallel} = 1 + \chi - \sqrt{\chi^2 + 2\chi} \quad \chi = \frac{(v_{mt}(1-\alpha) + v_{ei})x_0}{2c_s \sin \theta}$$

- Landau **non-local closure** implemented in GRILLIX [C. Pitzal, submit. PoP]

- multi-temperature **collisional closure** [M. Raghunathan, PPCF 2022]

- gyro-fluid model** including collisions and reaction terms:

$$\Lambda_N = s_n - \Delta_{\perp} \left(\frac{ms_{p_{\perp}}}{2qB^2} \right) - \nabla \cdot \left(\frac{ms_n \nabla_{\perp} \phi}{B^2} \right) \quad \Lambda_{mNU_{\parallel}} = s_{nu_{\parallel}}$$

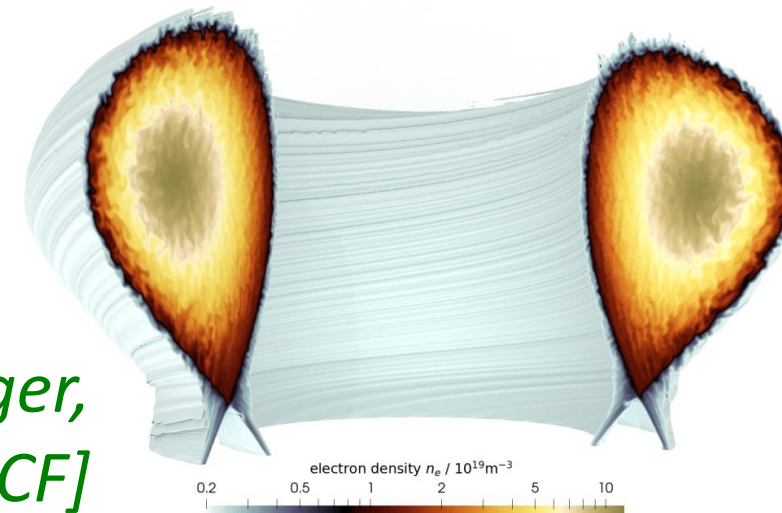
$$\Lambda_{P_{\perp}} = s_{p_{\perp}} - \Delta_{\perp} \left(\frac{ms_{r_{\perp}}}{2qB^2} \right) - \nabla \cdot \left(\frac{ms_{p_{\perp}} \nabla_{\perp} \phi}{B^2} \right) \quad \Lambda_{E_{\parallel}} = s_{e_{\parallel}} \quad [M. Wiesenberger, J. Phys.: Conf. Series 2022]$$

COMPLIANT PLASMA AND WALL GEOMETRIES

ARBITRARY AXISYMMETRIC PLASMA GEOMETRY

All codes compliant with arbitrary axisymmetric magnetic geometries but with different technical choices

[M. Wiesenberger, submitted to PPCF]

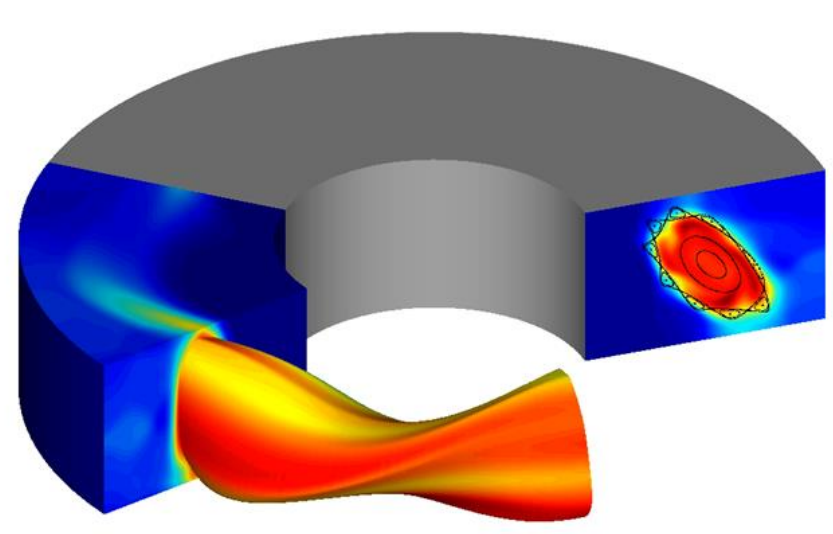


Code	Poloidal grid type	Grid alignment	Poloidal discretization	Parallel / toroidal discretization
FELTOR	Structured, Cartesian	None	Discontinuous Galerkin	FCI
GBS	Structured, Cartesian	None	Finite Differences	Finite differences
GRILLIX	Unstructured, locally Cartesian	None	Finite Differences	FCI
SOLEDGE3X	Locally structured, curvilinear	Flux-surface	Finite Volumes	Finite volumes

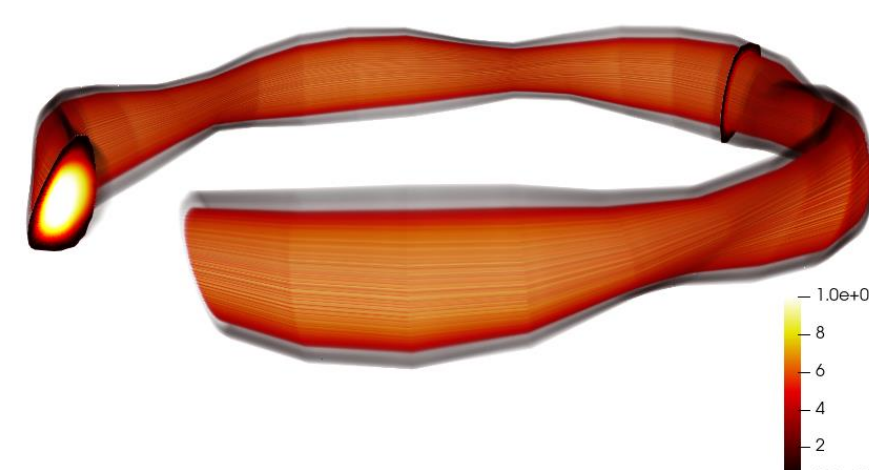
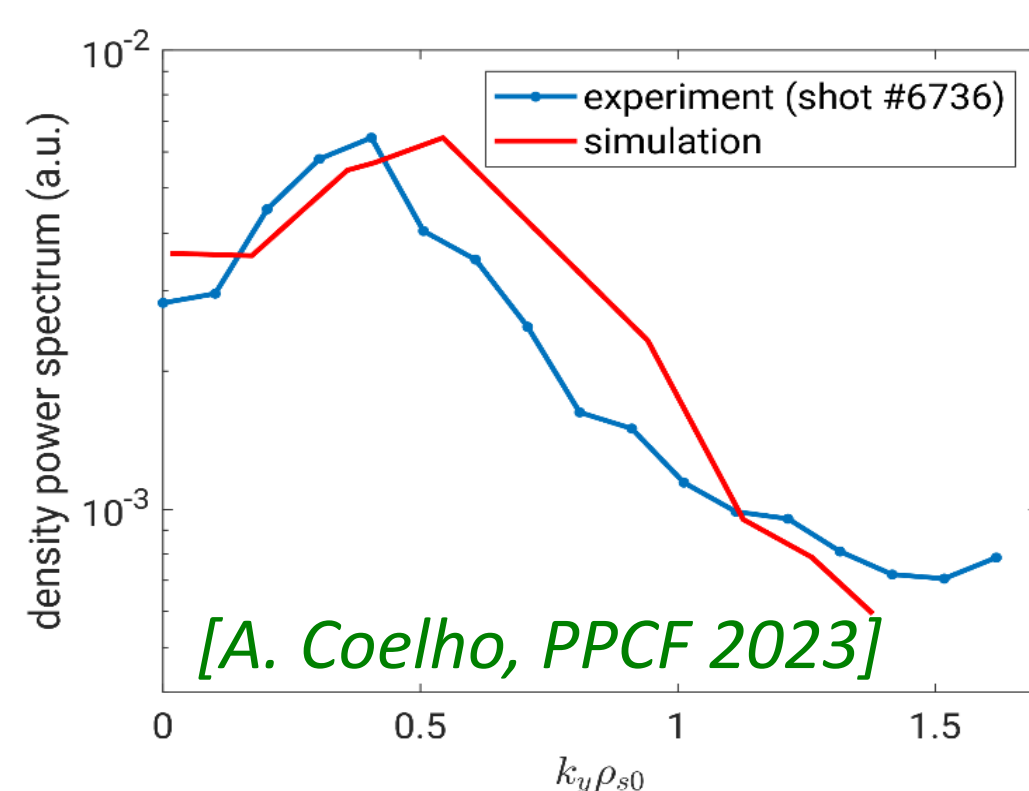
3D MAGNETIC EQUILIBRIA

GBS and GRILLIX extended to 3D magnetic equilibria

- GBS confronted to TJ-K experiment, W7-AS proof-of-principle in GRILLIX



[A. Coelho, NF 2022]

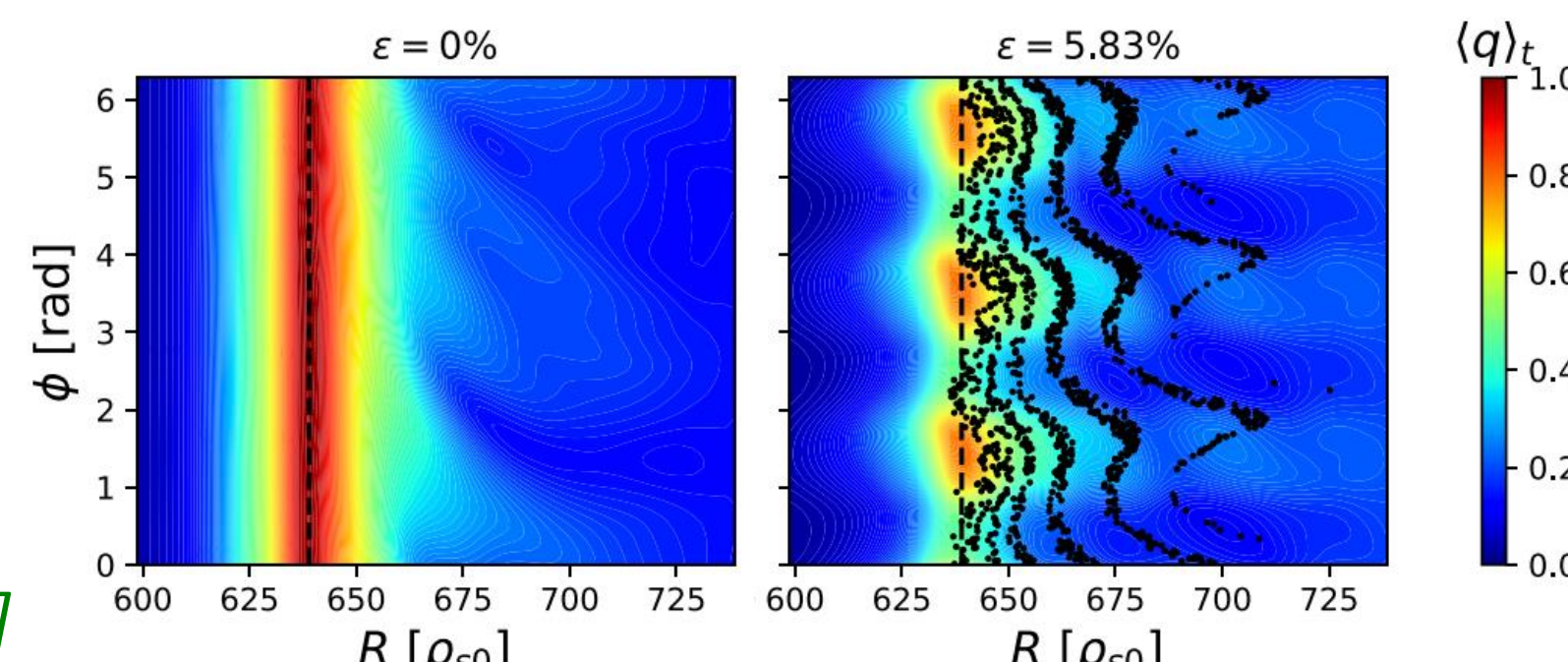


[W7-AS geometry with GRILLIX]

- 3D turbulence with RMPs in GBS

- RMPs impact turbulence but not transport level
- 2D divertor heat flux pattern smoothed by turbulence

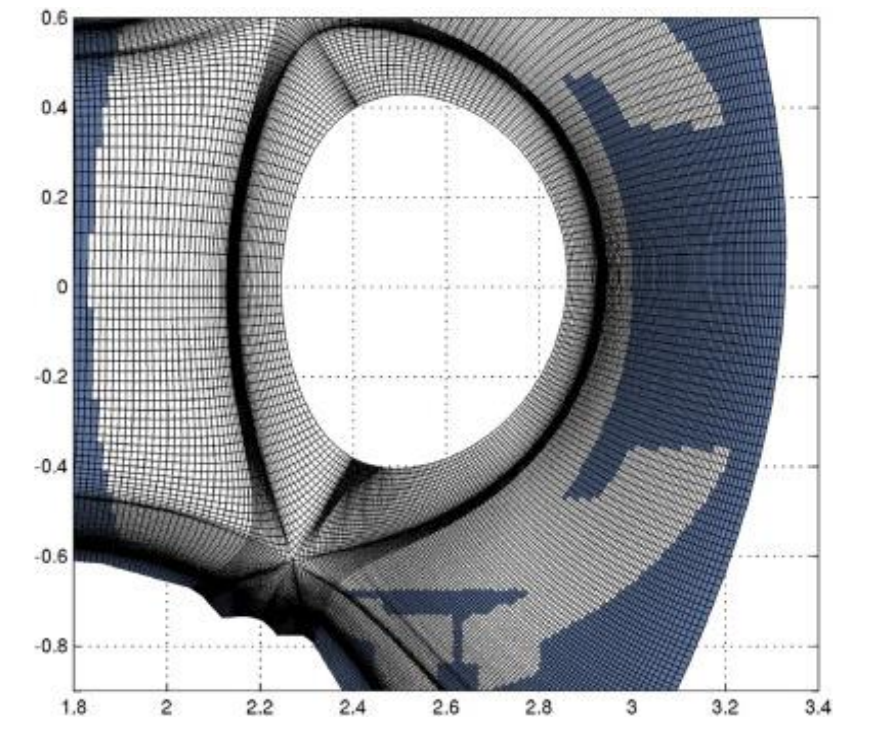
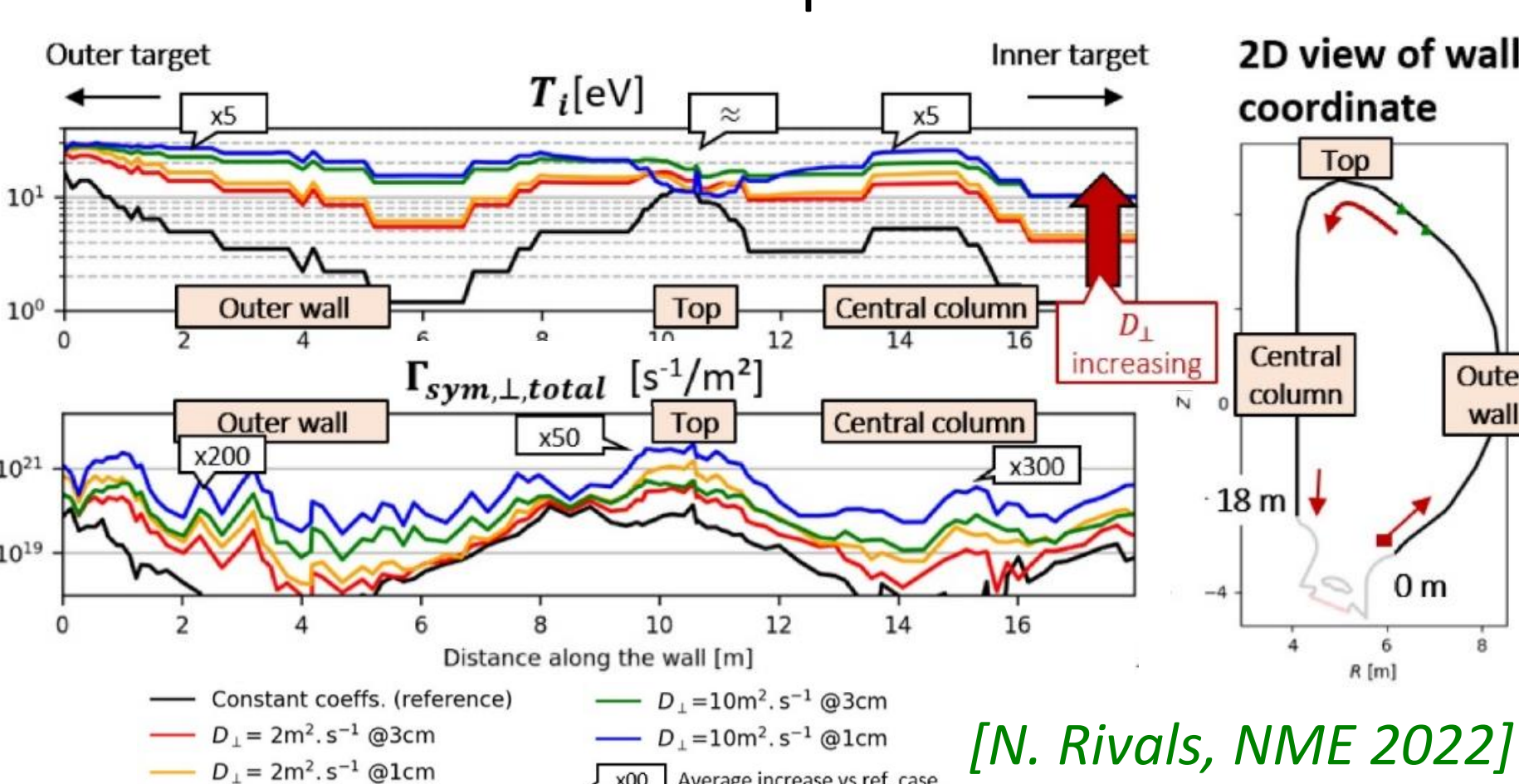
[T. Boinnard, NF 2023]



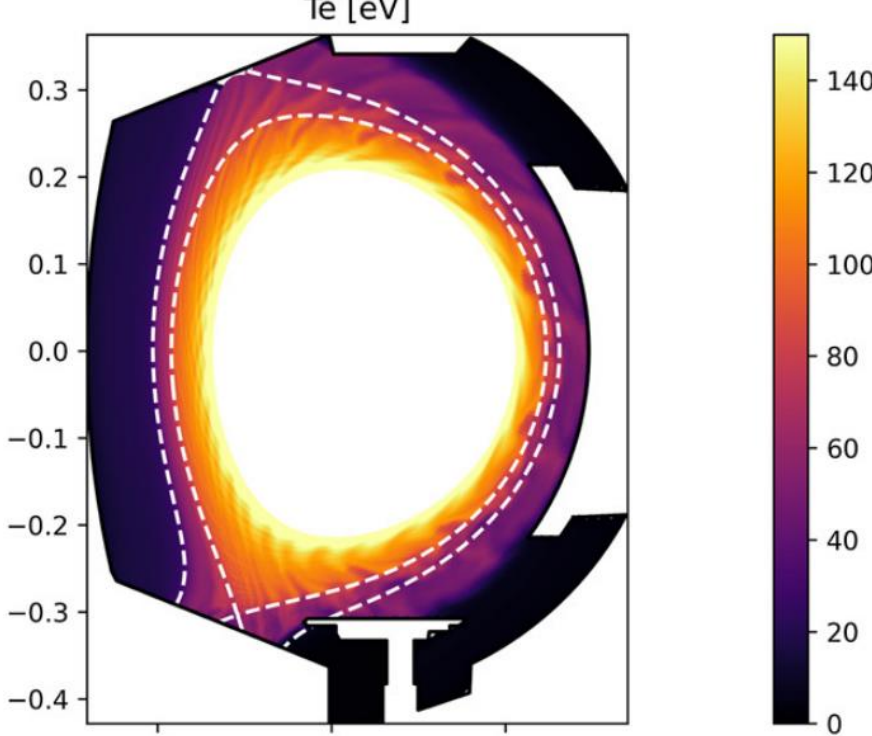
CAPTURING ACCURATELY THE WALL GEOMETRY

Major challenge but mandatory for accurate density regimes

- Immersed boundaries in SOLEDGE3X, GRILLIX, FELTOR
- Combined with penalization in GRILLIX (non-local wall?) [A. Stegmeir, CPC 2023]
- Combined with curvilinear grid in SOLEDGE3X
- SOLEDGE3X simulations up-to-the-wall in WEST & ITER

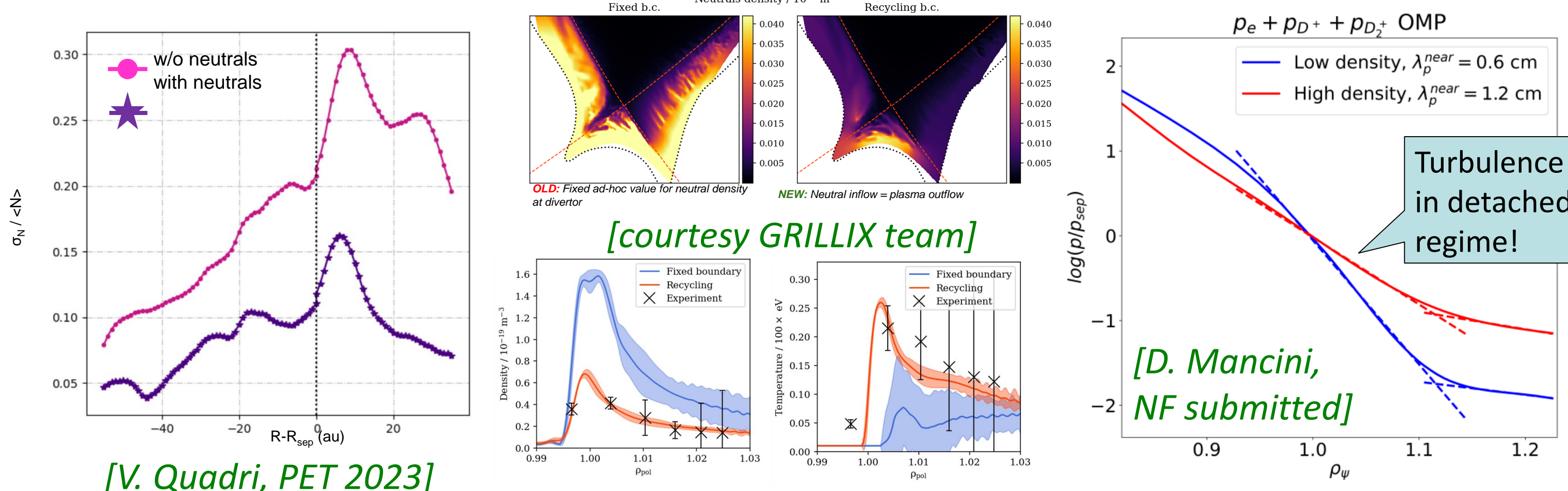


[H. Bufferand, NF 2021]



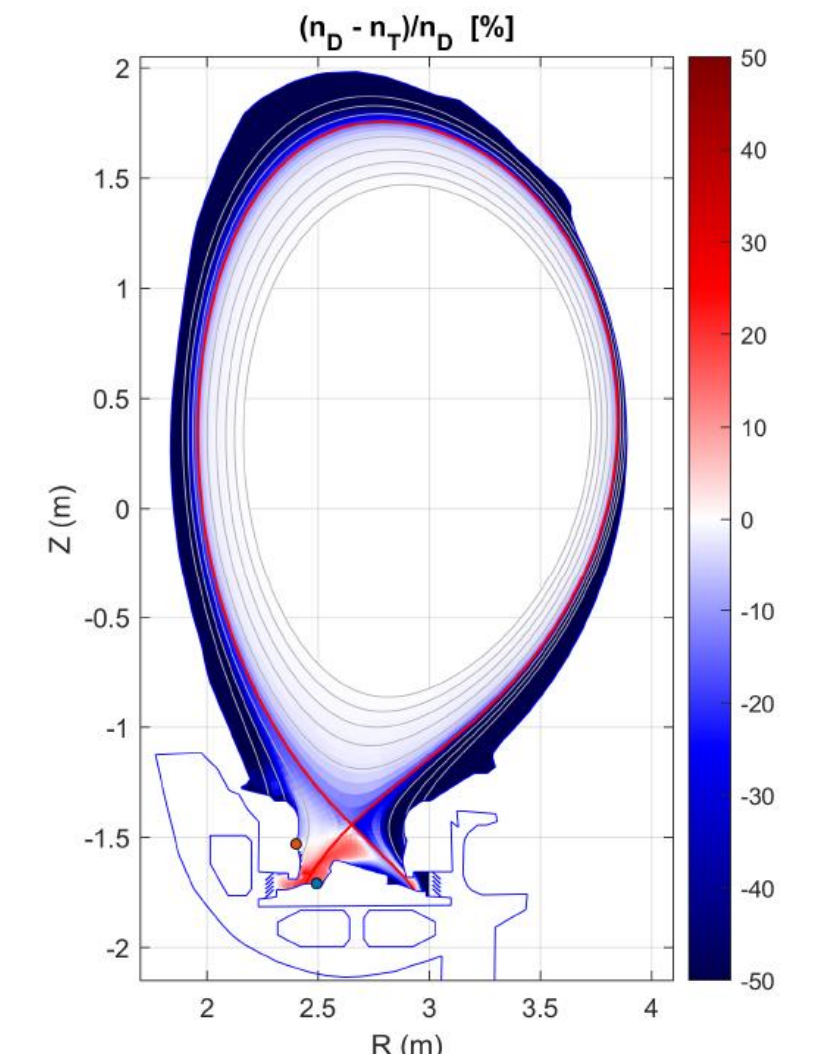
NEUTRALS AND MULTISPECIES PHYSICS

- GBS, GRILLIX and SOLEDGE3X feature self-consistent neutrals models
 - kinetic (method of characteristics) in GBS
 - kinetic (EIRENE) in SOLEDGE3X, but limited to 2D or low resolution 3D
 - fluid (CX-dominated model) in GRILLIX and SOLEDGE3X [N. Horsten, NF 2017]
- Significant impact of neutrals on turbulence and transport in the edge plasma



- Zhdanov closure (non trace impurities) implemented in GBS and SOLEDGE3X:
 - Applied to D-T-Ne cases => D/T imbalance in divertor [H. Bufferand, PPCF 2022]
 - Extension to 3D turbulence raises questions on tractability of numerical algorithm

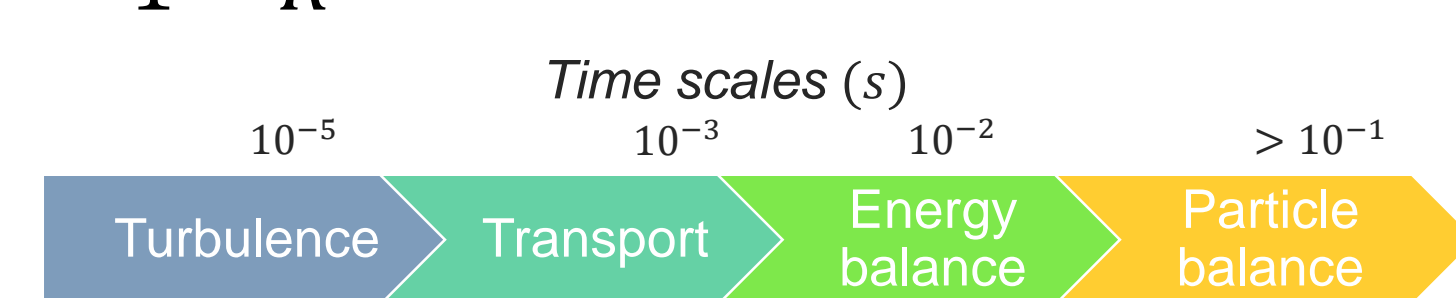
- Common validation against dedicated TCX pulse in high-density regime started



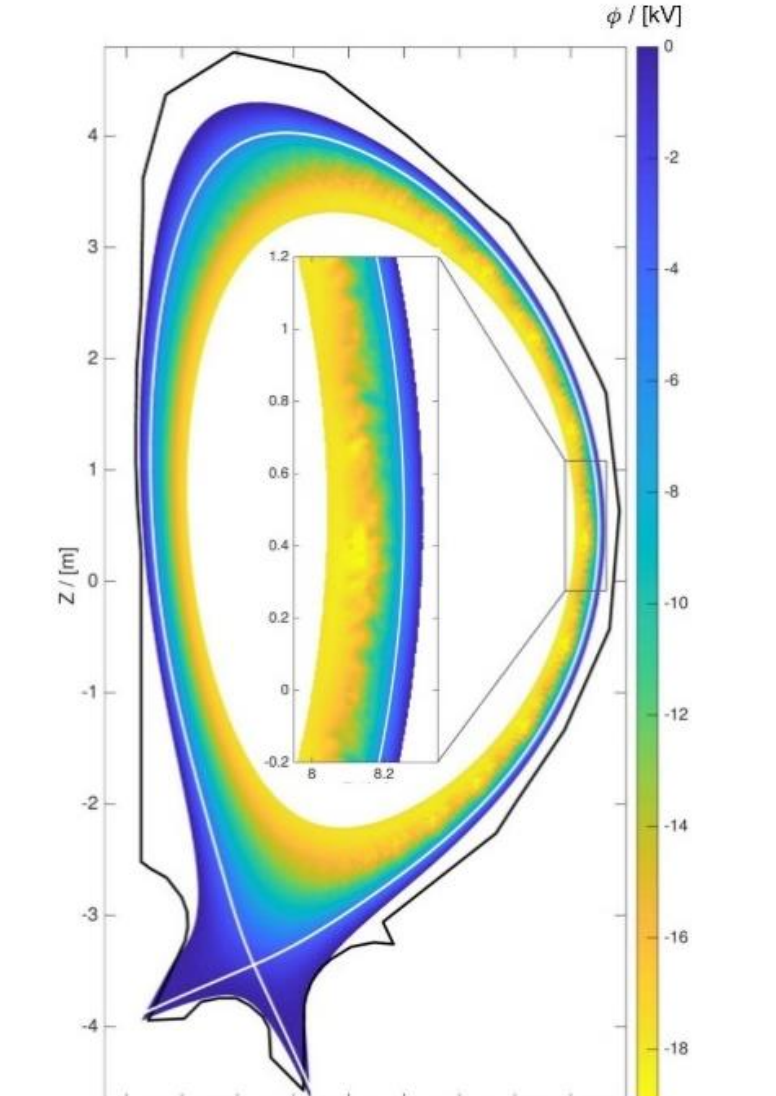
UPSCALING SIMULATIONS

- Strong effort invested in parallel towards upscaling simulations to reactor size
 - Effort centered on linear solvers and GPU-ization
 - ITER size case in GRILLIX [A. Stegmeir, CPC 2023]
- Impact of neutrals possibly challenging:

$$\tau_{eq,n} \approx \frac{\tau_{transp}}{1-R} \quad R_E \sim 25\% \quad R_n > 99\%$$



- need scheme to accelerate convergence (e.g., [E. Kaveeva, NF 2018])



[ITER size case with GRILLIX]



This work has been carried out within the framework of the EUROfusion Consortium, funded by the European Union via the Euratom Research and Training Programme (Grant Agreement No 101052200 — EUROfusion). Views and opinions expressed are however those of the author(s) only and do not necessarily reflect those of the European Union or the European Commission. Neither the European Union nor the European Commission can be held responsible for them.