



HAL
open science

Curved hexahedral block structure generation by advancing front

Claire Roche, Jérôme Breil, Simon Calderan, Thierry Hocquetlet, Franck
Ledoux

► **To cite this version:**

Claire Roche, Jérôme Breil, Simon Calderan, Thierry Hocquetlet, Franck Ledoux. Curved hexahedral block structure generation by advancing front. SIAM IMR24 - SIAM International Meshing Roundtable Workshop 2024, SIAM, Mar 2024, Baltimore, United States. cea-04505745

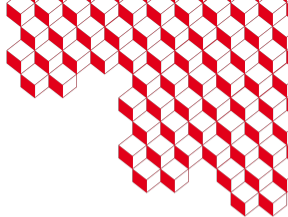
HAL Id: cea-04505745

<https://cea.hal.science/cea-04505745>

Submitted on 15 Mar 2024

HAL is a multi-disciplinary open access archive for the deposit and dissemination of scientific research documents, whether they are published or not. The documents may come from teaching and research institutions in France or abroad, or from public or private research centers.

L'archive ouverte pluridisciplinaire **HAL**, est destinée au dépôt et à la diffusion de documents scientifiques de niveau recherche, publiés ou non, émanant des établissements d'enseignement et de recherche français ou étrangers, des laboratoires publics ou privés.



Curved Hexahedral Block-Structure Generation by Advancing Front

SIAM IMR 2024, 7 march, 2024

C. Roche^{1,3} (claire.roche@cea.fr)

J. Breil¹ (jerome.breil@cea.fr)

S. Calderan² (simon.calderan@cea.fr)

T. Hocquellet¹ (thierry.hocquellet@cea.fr)

F. Ledoux^{2,3} (franck.ledoux@cea.fr)

¹ CEA-CESTA

² CEA, DAM, DIF, F-91297

³ LIHPC, CEA, UNIVERSITÉ PARIS-SACLAY

Table of Contents

Context

Linear Block-Structure Generation

- Fields Computation

- Generation of One Block Layer

- Conflict Management on a Layer

- Examples of Linear Blocking

Bézier Block Curving

- Block Curving Using Bézier Elements

- From Blocks to Final Mesh

- Examples of Final Meshes

Conclusion



Table of Contents

Context

Linear Block-Structure Generation

Fields Computation

Generation of One Block Layer

Conflict Management on a Layer

Examples of Linear Blocking

Bézier Block Curving

Block Curving Using Bézier Elements

From Blocks to Final Mesh

Examples of Final Meshes

Conclusion





Context

- This work aims to provide a solution to generate block-structured hexahedral meshes automatically for a legacy Computational Fluid Dynamics (CFD) code developed for atmospheric re-entry.

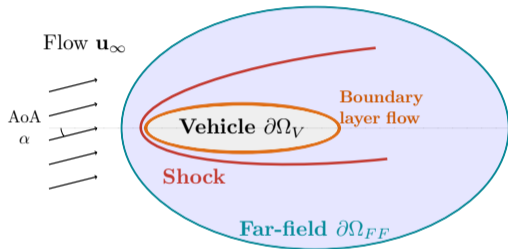


Fig. Flow around a supersonic vehicle

- Our meshing algorithm is freely available and implemented in the open-source C++ meshing framework GMDS [LWB]^a.

^a<https://github.com/LIHPC-Computational-Geometry/gmds>.

Ideal meshes:

- ◆ Near-wall **orthogonality**
- ◆ **Thin cells** in the boundary layer
- ◆ Smooth mesh **size transition**

Input meshes for the code:

- ◆ **Block-structured** meshes

Hypotheses on the domain:

- ◆ Vehicles are **completely immersed** in the fluid
- ◆ Far-field is a **smooth boundary**
- ◆ **Single-wall** vehicle



Approach Overview

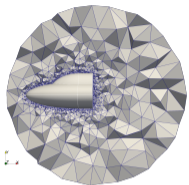


Fig. a Tetrahedral Mesh

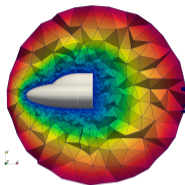


Fig. b Distance Field

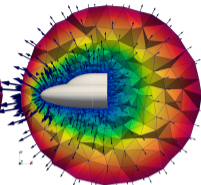


Fig. c Vector Field

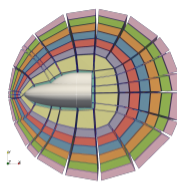


Fig. d Linear Blocks

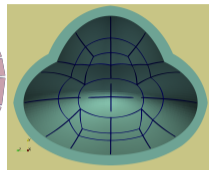


Fig. e Curved Blocks

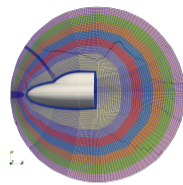


Fig. f Mesh

- ◆ Starting from a tetrahedral discretization of the domain (a)
- ◆ We first generate and combine distance fields (b)
- ◆ And build a vector field that ensure wall orthogonality and other properties (c)
- ◆ Using those fields, we generate a linear block structure (d)
- ◆ The block structure is curved using Bézier elements (e)
- ◆ And a final hexahedral mesh is generated (f)

Ruiz-Gironés E, Roca X, Sarrate J. The receding front method applied to hexahedral mesh generation of exterior domains. *Engineering with computers*, vol. 28, no. 4, 391-408, 2012.

Roche, C., Breil, J., Hocquellet, T., Ledoux, F. "Block-structured quad meshing for supersonic flow simulations". In *SIAM International Meshing Roundtable Workshop 2023 (SIAM IMR 2023)*.

Table of Contents

Context

Linear Block-Structure Generation

- Fields Computation

- Generation of One Block Layer

- Conflict Management on a Layer

- Examples of Linear Blocking

Bézier Block Curving

- Block Curving Using Bézier Elements

- From Blocks to Final Mesh

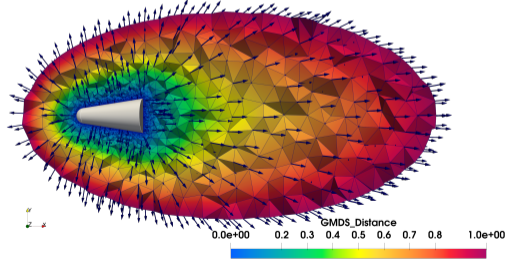
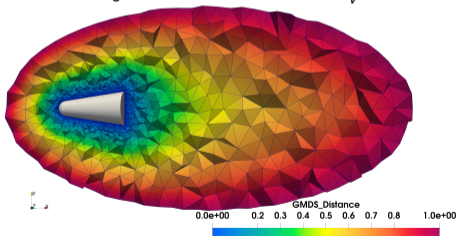
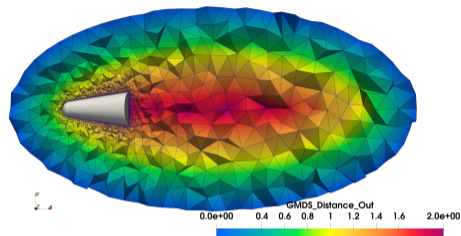
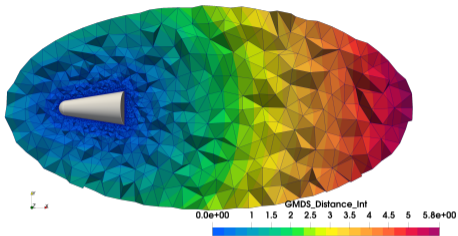
- Examples of Final Meshes

Conclusion





Fields Computation





Generation of One Block Layer

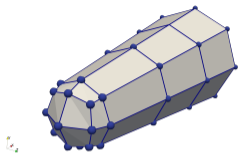


Fig. a A Front

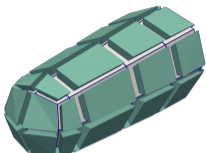


Fig. b A Layer

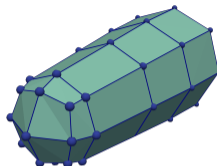


Fig. c A new front

- Each face of the front (a) creates a hexahedral block by extrusion. This set of blocks is the layer (b).
- Each block corner of the front (a) computes the position of the next block corner in the next layer.

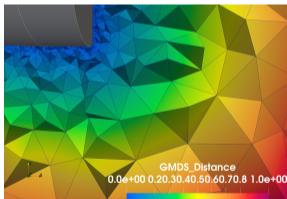


Fig. d Distance Field

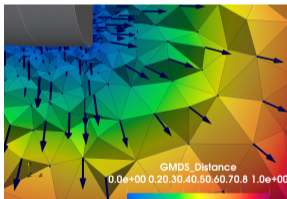


Fig. e Vector Field

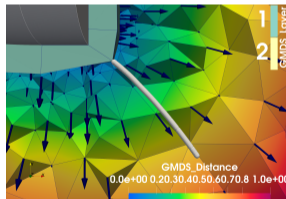


Fig. f Advected Block Corner

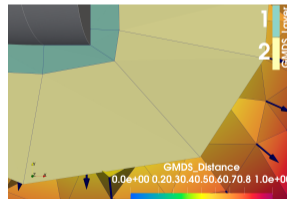


Fig. g New Blocks

- Need to solve conflicts due to expansion/contraction in a layer



Conflict Management on a Layer [RGRS12]

- Geometric classification of the edges of the front

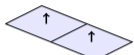


Fig. a Side Edge

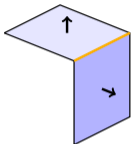


Fig. b Corner Edge

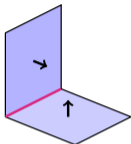


Fig. c End Edge

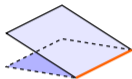
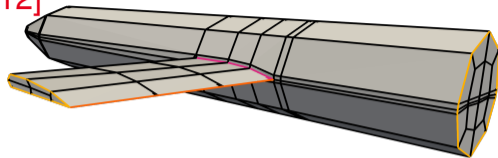


Fig. d Reversal Edge



Edges_Classification



Fig. e Example of Edges Classification

- Apply a set of patterns on edges and nodes of the front, according to the geometric classification of edges

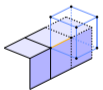


Fig. f Edge Patterns

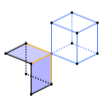
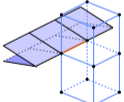
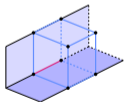


Fig. g Examples of Node Patterns

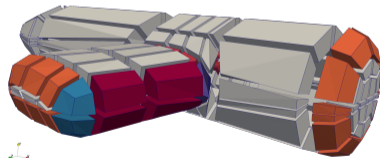
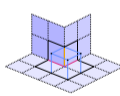
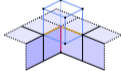


Fig. h Layer Generated on Front of Fig.e



Linear Blocking around Double Ellipsoid [AADLC91]

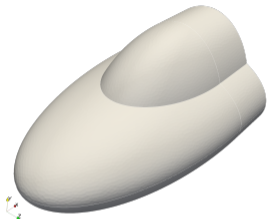


Fig. a Double Ellipsoid Geometry

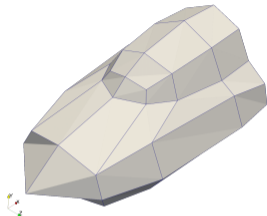


Fig. b Double Ellipsoid Surface Blocking

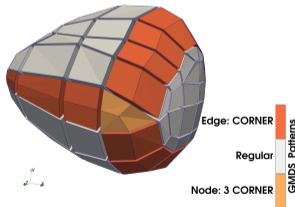


Fig. c Patterns on Second Layer of Blocks

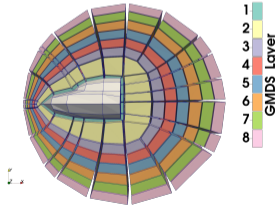


Fig. d Layers of Linear Blocks

Fig. e Extrusion of Layers

Table of Contents

Context

Linear Block-Structure Generation

Fields Computation

Generation of One Block Layer

Conflict Management on a Layer

Examples of Linear Blocking

Bézier Block Curving

Block Curving Using Bézier Elements

From Blocks to Final Mesh

Examples of Final Meshes

Conclusion





Block Curving Using Bézier Elements [Bez86, Feu19]

Aim: Improve the representation of the geometry to avoid the smoothing step on the final mesh.

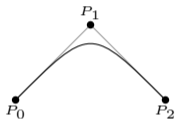


Fig. a Bézier Curve of Degree $p = 2$

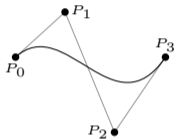


Fig. b Bézier Curve of Degree $p = 3$

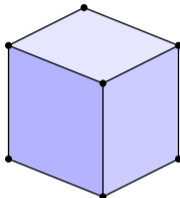


Fig. c Linear Hexahedral Block

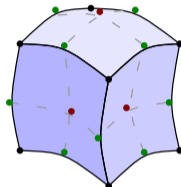


Fig. d Bézier Block of Degree $p = 2$

- Control points of all the block faces corresponding to the surface of the geometry are computed to approximate the geometry surface
- Control points of the blocks adjacent to those faces are moved to avoid overlapping blocks

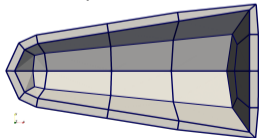


Fig. e Linear First Layer of Blocks

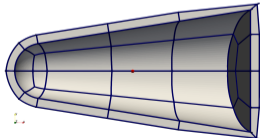


Fig. f Curved First Layer of Blocks

◆ For a more accurate and elegant way to process, you can attend the talk of KETAN MITTAL on *"Mixed-Order Meshes through rp -Adaptivity for Surface Fitting to Implicit Geometries"*



Interval Assignment: Set the Discretization of Each Block Edge

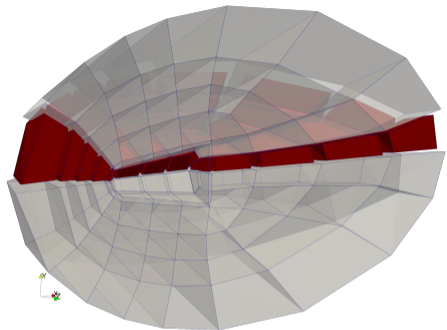


Fig. a Topological Sheet (■)

Topological Sheet

A set of opposite block edges.

◆ All edges of the same topological sheet share the same discretization

- For each topological sheet, an optimization problem is solved to compute the number of mesh edges of the block edges
- Each block is discretized uniformly in the parametric space of the Bézier Element

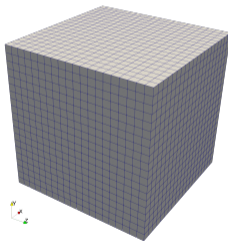


Fig. b Parametric Space

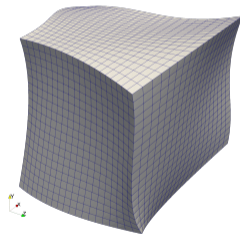


Fig. c Physical Space



Examples of Final Meshes

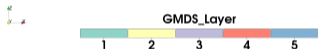
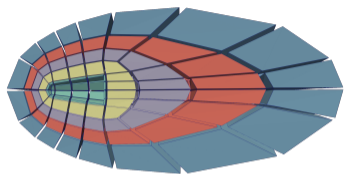


Fig. a Linear blocks around RAMCII geometry [Sca07]

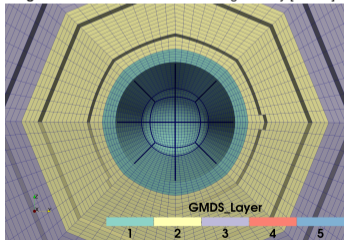


Fig. c Mesh of RAMCII nose surface view from inside

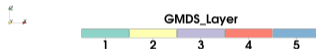
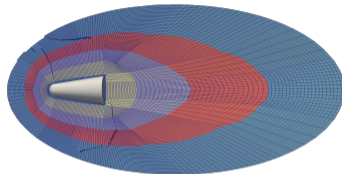


Fig. b Mesh around RAMCII geometry

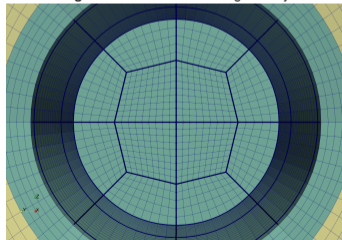


Fig. d Mesh of RAMCII back surface view from inside

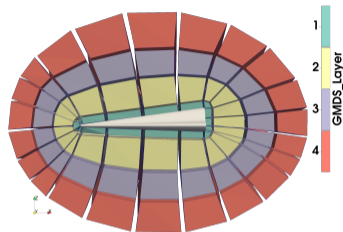


Fig. e Linear blocks around HyTRV geometry [QLYT21]

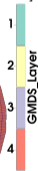
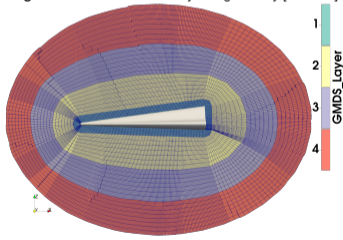


Fig. f Mesh around HyTRV geometry

Table of Contents

Context

Linear Block-Structure Generation

Fields Computation

Generation of One Block Layer

Conflict Management on a Layer

Examples of Linear Blocking

Bézier Block Curving

Block Curving Using Bézier Elements

From Blocks to Final Mesh

Examples of Final Meshes

Conclusion





Conclusion & Perspectives

- ◆ This work proposed a solution to generate block-structured hexahedral meshes dedicated to CFD
- ◆ Extension of the work of RUIZ-GIRONÉS ET AL. to high-order blocks

Perspectives

- ◆ Use the meshes generated for numerical simulations
- ◆ Improve the way to compute the curved blocks to approximate the surface of the geometry
- ◆ Work on curved blocks smoothing under constraints due to the applications

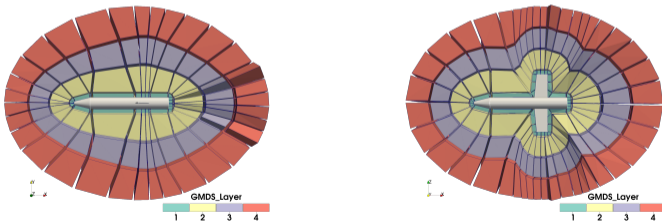


Fig. a Linear blocks around a geometry with wings

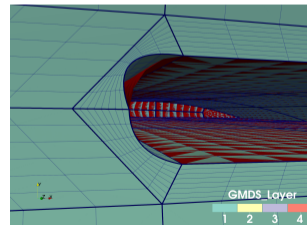
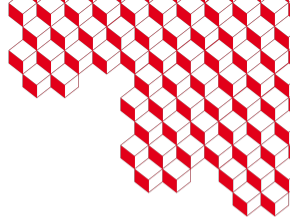


Fig. b The way the blocks are curved is not always sufficient to represent the geometry (■)



Thank you! Any question?



References I



D Aymer, T Alziary, Luigi De Luca, and G Carlomagno, *Experimental study of the flow around a double ellipsoid configuration*, Hypersonic Flows for Reentry Problems: Volume II: Test Cases—Experiments and Computations Proceedings of a Workshop Held in Antibes, France, 22–25 January 1990, Springer, 1991, pp. 335–357.



Pierre Bezier, *Courbes et surfaces, mathématiques et cao*, 4, Hermès, Paris (1986).



Rémi Feuillet, *Embedded and high-order meshes: two alternatives to linear body-fitted meshes*, Ph.D. thesis, Université Paris-Saclay, 2019.



Franck Ledoux, Jean-Claude Weill, and Yves Bertrand, *Gmms: A generic mesh data structure*.



Han Qi, Xinliang Li, Changping Yu, and Fulin Tong, *Direct numerical simulation of hypersonic boundary layer transition over a lifting-body model hytrv*, Advances in Aerodynamics **3** (2021), 1–21.



Eloi Ruiz-Gironés, Xevi Roca, and Josep Sarrate, *The receding front method applied to hexahedral mesh generation of exterior domains*, Engineering with computers **28** (2012), no. 4, 391–408.



Leonardo C Scalabrin, *Numerical simulation of weakly ionized hypersonic flow over reentry capsules*, Ph.D. thesis, Citeseer, 2007.



Annexes: 3D Surface Block Curving



Fig. a Part of the geometric surface

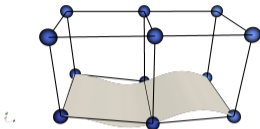


Fig. b 2 blocks of the linear block structure

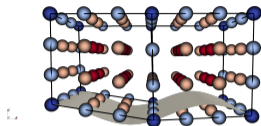


Fig. c Initial control points (elements of degree $p = 3$), set uniformly on the linear blocks

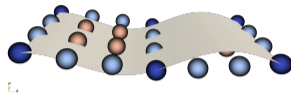


Fig. d Initial control points on the faces corresponding to the geometric surface

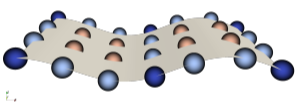


Fig. e Points to interpolate on the geometric surface (Fig. a), computed as the projection of the control points of Fig. d onto the geometry

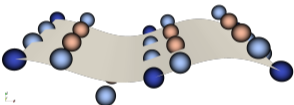


Fig. f Control points computed to interpolate positions of Fig. e

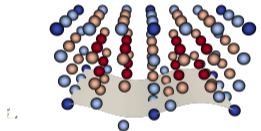


Fig. g Control points of the 2 Bézier elements



Fig. h Final mesh generated with the 2 Bézier elements defined by the control points of Fig. f

Bézier Quadrangle Expression in the Parametric Space

$$\forall u, v \in [0, 1], h(u, v) = \sum_{i=0}^m \sum_{j=0}^n B_i^m(u) B_j^n(v) P_{i,j} \quad (1)$$

where $P_{m,n}$ is the matrix of the control points, and m and n are the degree in each direction

➤ As the first layer of blocks can be very thin, we add the same offset as the control points moved in Fig. f to the opposite face in the block. This step is not illustrated here and could be included between Fig. f and Fig. g.