



HAL
open science

Introducing electromagnetic effects in Soledge3X

R Düll, H Bufferand, E Serre, P Tamain, V Quadri, N Rivals, G Ciraolo, H Yang, K Galazka, G Falchetto

► **To cite this version:**

R Düll, H Bufferand, E Serre, P Tamain, V Quadri, et al.. Introducing electromagnetic effects in Soledge3X. PET19 - 19th International Workshop on Plasma Edge Theory in Fusion Devices, Sep 2023, Hefei, China. cea-04462542

HAL Id: cea-04462542

<https://cea.hal.science/cea-04462542>

Submitted on 16 Feb 2024

HAL is a multi-disciplinary open access archive for the deposit and dissemination of scientific research documents, whether they are published or not. The documents may come from teaching and research institutions in France or abroad, or from public or private research centers.

L'archive ouverte pluridisciplinaire **HAL**, est destinée au dépôt et à la diffusion de documents scientifiques de niveau recherche, publiés ou non, émanant des établissements d'enseignement et de recherche français ou étrangers, des laboratoires publics ou privés.



irfm

Introducing electromagnetic effects in Soledge3X

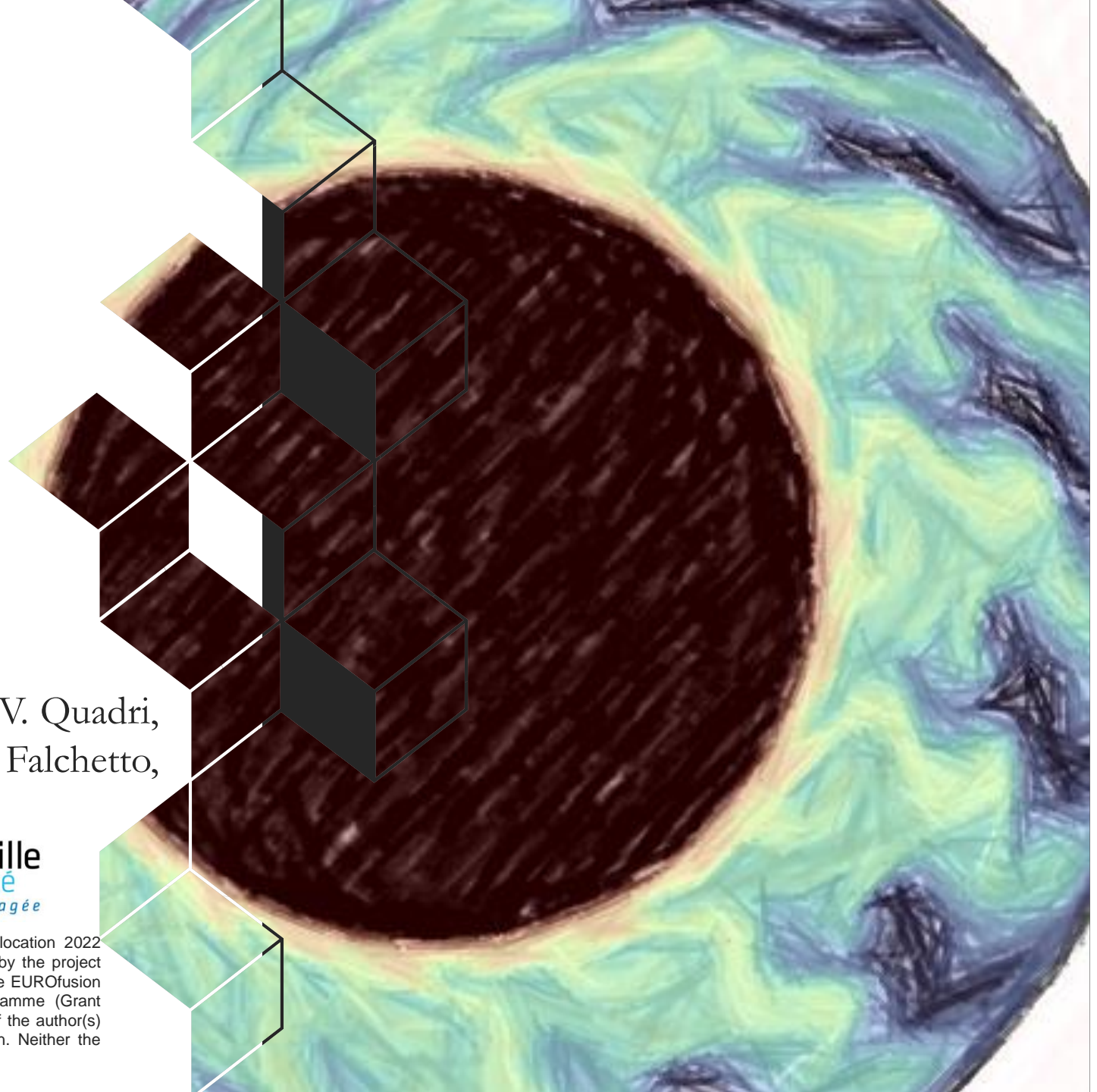
R. Düll* , H. Bufferand, E. Serre, P. Tamain, V. Quadri,
N. Rivals, G. Ciruolo, H. Yang, K. Galazka, G. Falchetto,
and the SOLEDGE3X team.



EUROfusion



This work was granted access to the HPC/AI resources of CINES/IDRIS/TGCC under the allocation 2022 A0120510482 made by GENCI and to the HPC resources of Aix Marseille University financed by the project Equip@Meso (ANR 10 EQPX 29 01). This work has been carried out within the framework of the EUROfusion Consortium, funded by the European Union via the Euratom Research and Training Programme (Grant Agreement No 101052200 — EUROfusion). Views and opinions expressed are however those of the author(s) only and do not necessarily reflect those of the European Union or the European Commission. Neither the European Union nor the European Commission can be held responsible for them.



Outline

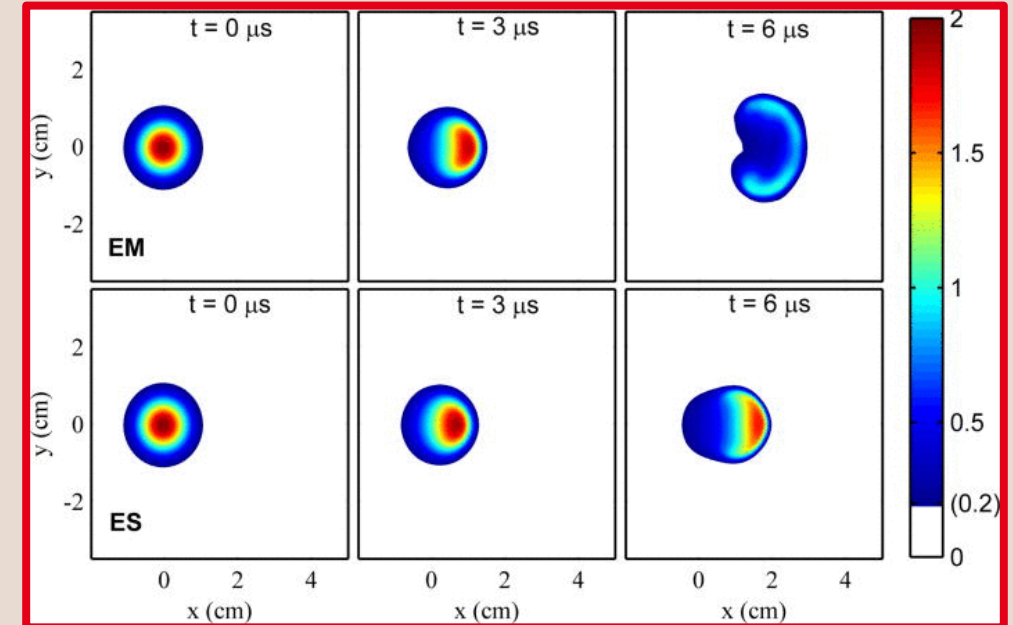
1. **Electrostatic versus Electromagnetic models**
2. **A new vorticity system for Soledge3X**
3. **Verification and validation of the model**
4. **First electromagnetic turbulent simulations**
5. **Conclusions and perspectives**



1 ■ Electrostatic versus electromagnetic models

Do we need electromagnetic effects?

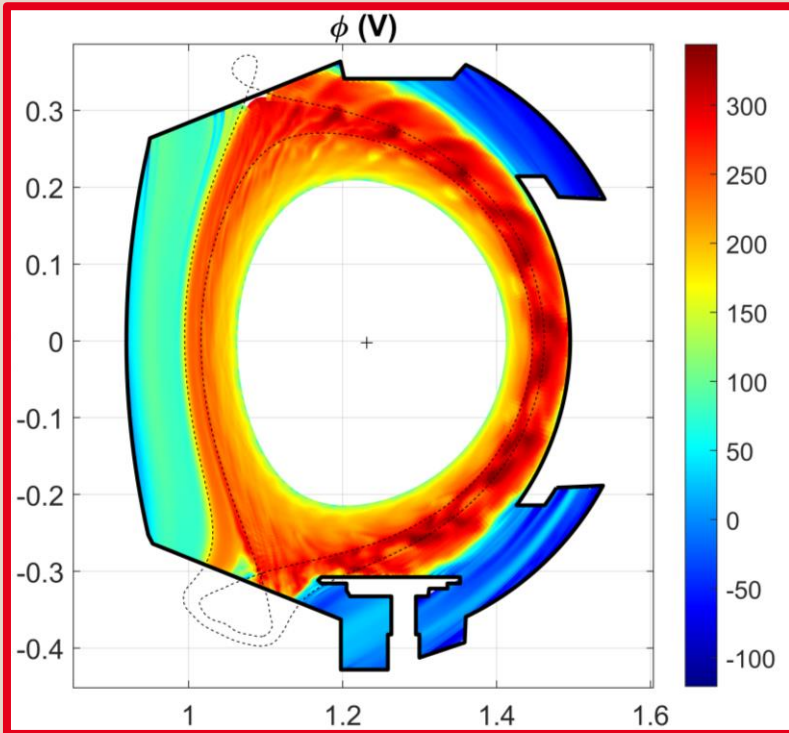
- Non-negligible effects on the plasma
 - Existence of drift Alfvén turbulence [Scott, PPCF 1997]
 - Impact on filament shape in turbulent blob propagation [Lee et al, JNM 2015]
 - Stronger effects for high- β plasmas
- Electron inertia effects are also needed
 - Constrain the shear Alfvén wave speed to physical values [Dudson et al, PPCF 2021]
 - Improvement of the numerical stability [Stegmeir et al, PoP 2019]
- Turbulent simulations on large machines (e.g. ITER) require electromagnetic effects



*Propagation of a plasma blob
from [Lee et al, JNM 2015]
top: electromagnetic, bottom: electrostatic*

$$\text{Key parameter: } \beta = \frac{p}{p_{mag}} = \frac{enT}{B^2/2\mu_0}$$

The electrostatic vorticity equation



WEST turbulent profile

The electric field for $E \times B$ drifts is obtained from the potential: $\mathbf{E}_\perp = -\nabla_\perp \Phi$

■ The potential appears in:

- the vorticity $\Omega = \nabla \cdot \left[\frac{m_i n_i}{e Z_i B^2} \nabla_\perp \Phi + \frac{m_i}{e Z_i^2 B^2} \nabla_\perp p_i \right]$

for the polarization current $\nabla \cdot \mathbf{j}_\parallel \mathbf{b} = -\partial_t \Omega + \nabla \cdot \mathbf{j}_\Omega$

- the parallel electric field $E_\parallel \mathbf{b} = -\nabla_\parallel \Phi$

for Ohm's law $j_\parallel = \sigma_\parallel \left(E_\parallel + \frac{1}{en_e} (\mathbf{b} \cdot \nabla_\parallel p_e + R_{e,\parallel}) \right)$

■ The quasineutral assumption $\nabla \cdot \mathbf{j}^{tot} = 0$ leads to the „vorticity“ equation on Φ :

$$\nabla \cdot \left[\frac{m_i n_i}{e Z_i B^2} \partial_t \nabla_\perp \Phi + \nabla \cdot (\sigma_\parallel \nabla_\parallel \Phi) \right] \mathbf{b} = \nabla \cdot \left(\sigma_\parallel \frac{1}{en_e} (\nabla_\parallel p_e + R_{e,\parallel}) \right) \mathbf{b} + \nabla \cdot (\mathbf{j}^* + \mathbf{j}_S + \mathbf{j}_\Omega) \mathbf{b}$$

Ratio between diffusion coefficients: $> 10^6$

High anisotropy \rightarrow poor numerical condition !



2 ■ A new vorticity system for Soledge3X

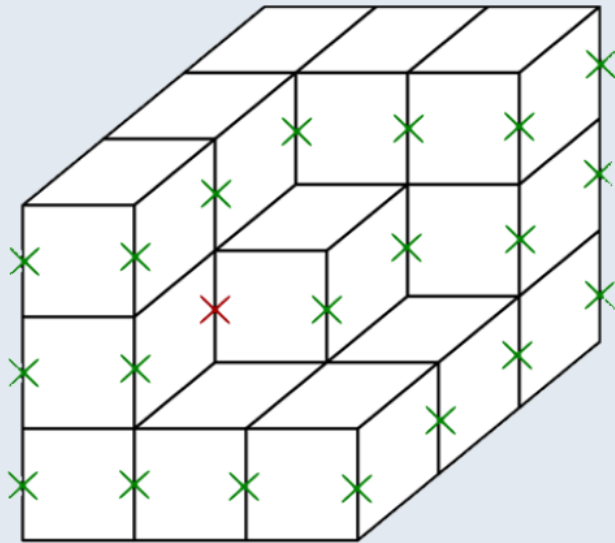
The electromagnetic vorticity equation

Implicit system on 3 fields: electric potential Φ ; parallel magnetic vector potential A_{\parallel} ; parallel current density j_{\parallel}

$$\nabla \cdot \left[\frac{m_{\alpha} n_{\alpha}}{B^2} \partial_t \nabla_{\perp} \Phi \right] = \nabla \cdot (j_{\parallel} \vec{b}) - \partial_t \Omega_{\pi} \quad (1) \quad \text{Vorticity equation}$$

$$j_{\parallel} + \frac{\sigma_{\parallel} m_e}{n_e e^2} \left(\frac{\partial j_{\parallel}}{\partial t} - \vec{\nabla} \cdot (v_e \vec{\nabla}_{\perp} j_{\parallel}) \right) = \sigma_{\parallel} \left(-\nabla_{\parallel} \Phi - \partial_t A_{\parallel} + \frac{T_e}{e} \nabla_{\parallel} \log(n_e) + \frac{1.71}{e} \nabla_{\parallel} T_e \right) \quad (2) \quad \text{Ohm's law}$$

$$\Delta_{\perp} A_{\parallel} = -\mu_0 j_{\parallel} \quad (3) \quad \text{Ampère's law}$$



A_{\parallel} and j_{\parallel} are defined on a poloidally and toroidally staggered grid

No points for A_{\parallel} and j_{\parallel} needed on the sheath:

- Dirichlet $A_{\parallel}^{BC} = 0$ on the sheath and tangential wall BC
- The sheath current is directly enforced in the vorticity equation

$$\left(1 + \frac{\sigma_{\parallel} m_e}{n_e e^2} \partial_t \right) j_{\parallel}^{BC} = j_{sat} (1 - e^{\Lambda - \Phi/T_e})$$

- Neumann $\nabla^{BC} j_{\parallel} = 0$ for the perpendicular diffusion operator on j_{\parallel}

Implementation details

A coupled implicit system is solved on the potentials Φ and A_{\parallel} , the current j_{\parallel} is updated a posteriori

$$\begin{pmatrix} \hat{\partial}_t \hat{\nabla} \cdot [\hat{D}_{\perp} \hat{\nabla}_{\perp} \circ] + \hat{\nabla} \cdot [\hat{D}_{\parallel} \hat{\nabla}_{\parallel} \circ \vec{b}] & \beta_0 \hat{\partial}_t \hat{\nabla} \cdot [\hat{D}_{\parallel} \circ \vec{b}] \\ \hat{D}_{\parallel} \hat{\nabla}_{\parallel} \circ & \beta_0 \hat{D}_{\parallel} \hat{\partial}_t \circ - \hat{\nabla} \cdot [\hat{\nabla}_{\perp} \circ] \end{pmatrix} \begin{pmatrix} \hat{\Phi}^{n+1} \\ \hat{A}_{\parallel}^{n+1} \end{pmatrix} = \begin{pmatrix} \hat{\nabla} \cdot [\hat{D}_t \hat{j}_{\parallel}^n \vec{b}] + RHS^{\Phi} \\ \hat{D}_t \hat{j}_{\parallel}^n + RHS^{A_{\parallel}} \end{pmatrix}$$

with the coefficients $\hat{D}_{\perp} = \frac{\hat{m}_i \hat{n}_i}{\hat{B}^2}$, $\hat{D}_{\parallel} = \frac{\hat{\sigma}_{\parallel}}{1 + \hat{\tau}/\mu}$ and $\hat{D}_t = \frac{\mu}{1 + \hat{\tau}/\mu}$

and the plasma parameters $\beta_0 = \frac{en_0 T_0}{B^2/\mu_0}$ and $\mu = \frac{\hat{\sigma}_{\parallel} \hat{m}_e}{\hat{n}_e \hat{m}_i}$ for a timestep size $\hat{\tau}$.

	Φ	$\Phi - j_{\parallel}$	$\Phi - A_{\parallel}$	$\Phi - j_{\parallel} - A_{\parallel}$
Number of iterations	165	35	660	117
Solve time per iteration [s]	0.45	0.11	6.36	1.15
Total time [s]	2268	1599	14275	3841

*Simulation results for different combinations of equations (1) – (3) on a 3D limiter case with ~500.000 cells
PETSc: LGMRES scheme with GAMG preconditioner on 96 computing cores.*

No drifts

Electromagnetic flutter

- Definition of the electromagnetic potential:

$$\nabla \times \mathbf{A} = \mathbf{B}$$

- Assume small perturbations of the equilibrium magnetic field:

$$\mathbf{B} = \mathbf{B}_{eq} + \tilde{\mathbf{B}}$$

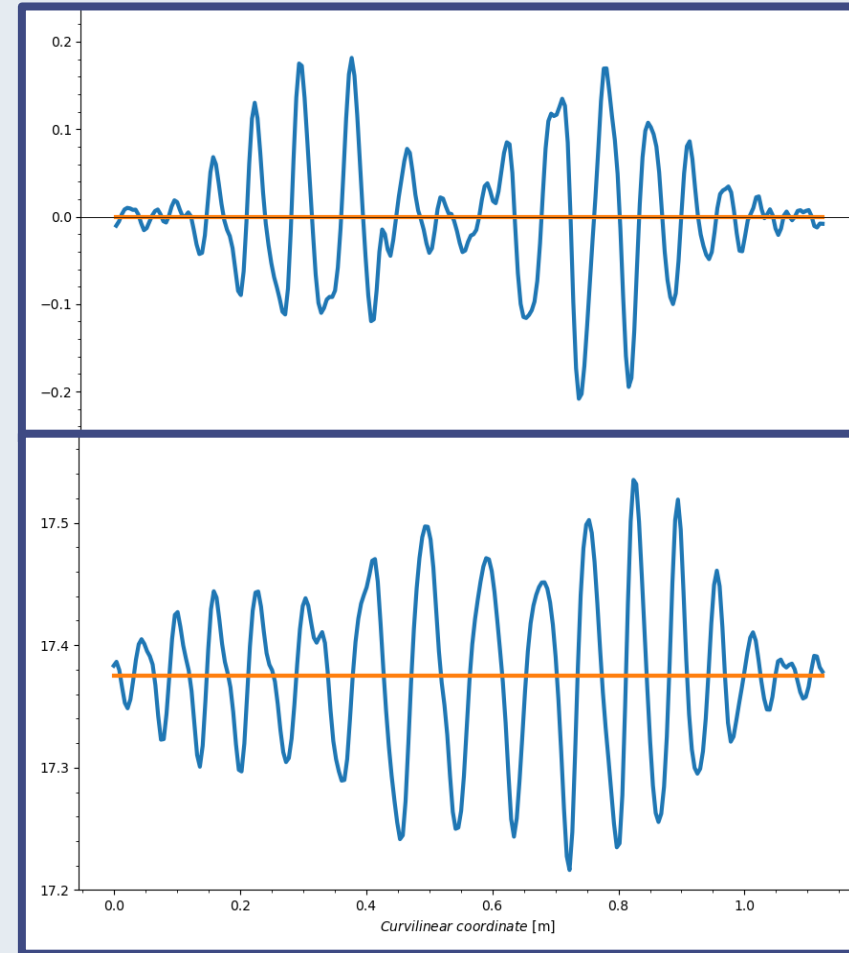
- From the value of the toroidal perturbation field \tilde{A}_{\parallel} :

$$\tilde{\mathbf{B}} = (\nabla \times \mathbf{b}_{eq}) \tilde{A}_{\parallel} - \mathbf{b}_{eq} \times \nabla \tilde{A}_{\parallel}$$

- The perturbation field $\tilde{\mathbf{b}}$ is calculated from \tilde{A}_{\parallel} at the previous timestep

- $\tilde{\mathbf{b}}$ is considered for the advection and the parallel diffusion of the conserved fluid quantities:

- ion density n_i
- ion momentum $n_i v_i$
- electron and ion temperature T_e and T_i



*Fluctuations of the contravariant components of \mathbf{b}
Profile along the poloidal direction in the core
Limiter scenario with developed turbulence*



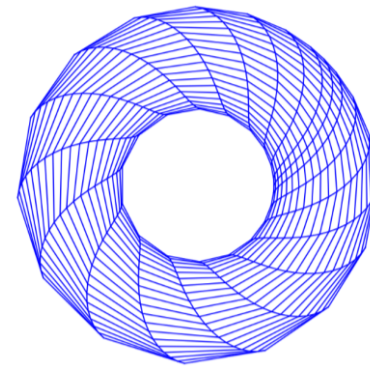
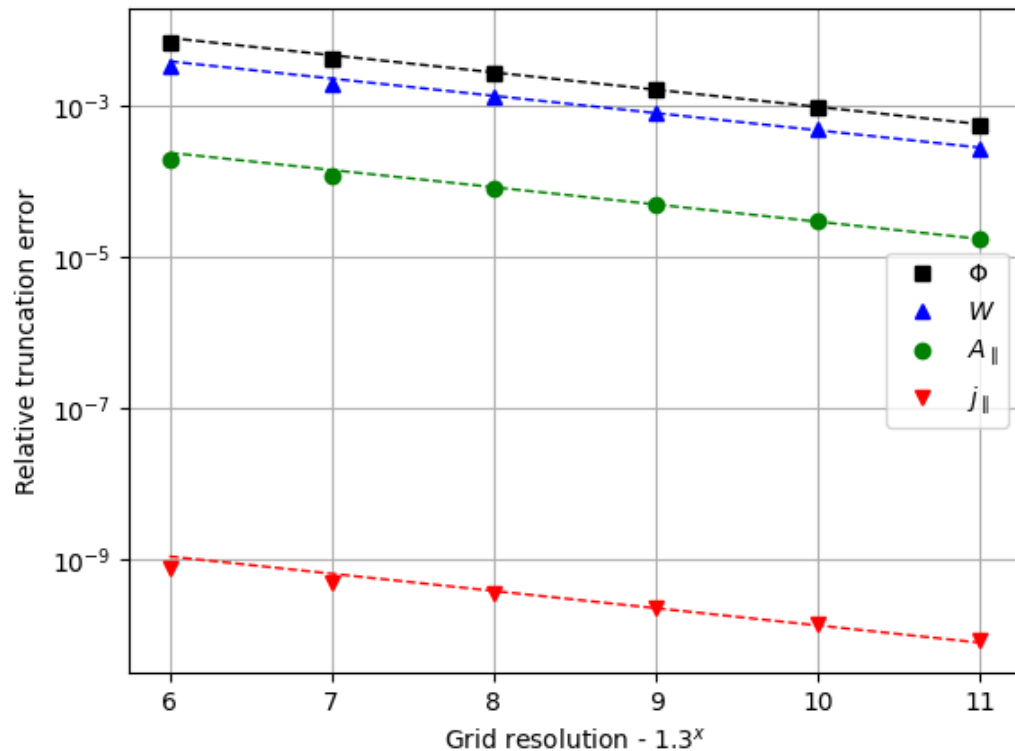
3 ■ **Model verification and validation**

MMS verification

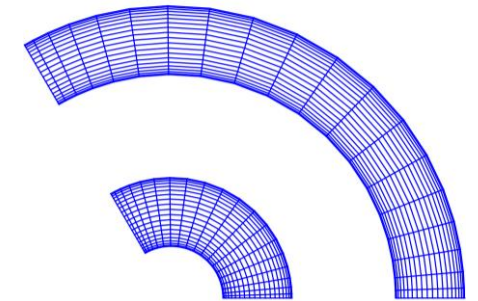
Use the method of manufactured solutions [Roache, SFMA 2019] to check the new system on Φ , A_{\parallel} and j_{\parallel}

Define arbitrary initial profiles and apply analytic source terms to maintain a steady-state solution

The change within one timestep estimates the numerical error



$\psi - \theta$ view



$\psi - \phi$ view

Estimated numerical errors for different 3D mesh resolutions.

The total number of points was increased by a factor ~ 2.2 between each run.

The dashed lines indicate the theoretical 2^{nd} order convergence.

Linear verification

Consider the four-field model on a SLAB domain with uniform magnetic field. Only evolve n_e , Φ , j_{\parallel} and A_{\parallel}

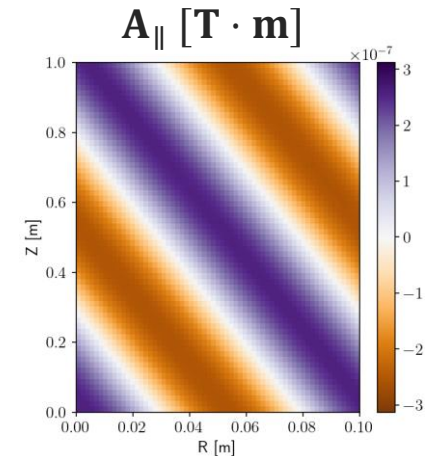
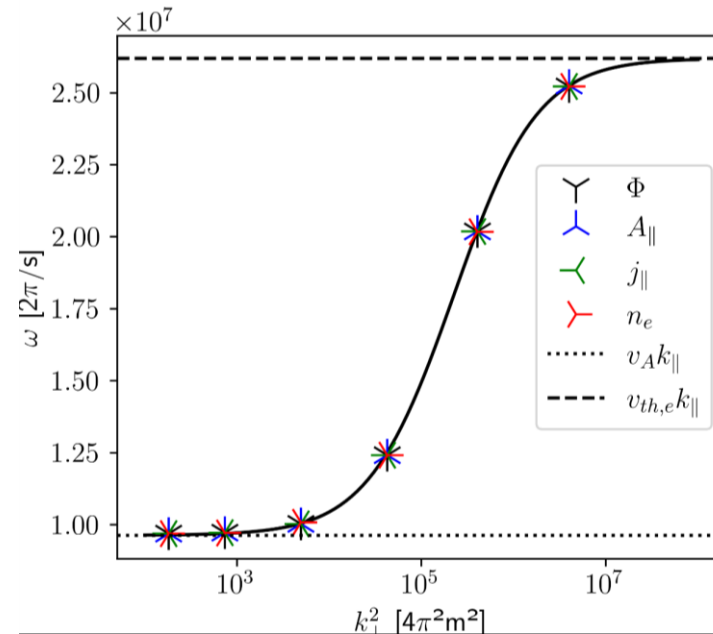
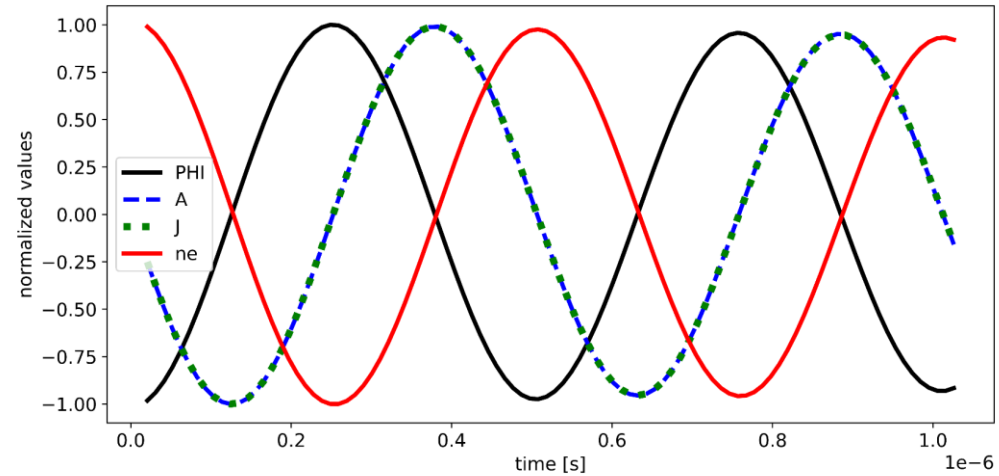
$$\begin{aligned} \partial_t n_e &= \frac{1}{e} \nabla \cdot j_{\parallel} \mathbf{b} \\ \nabla \cdot \left[\frac{m_i n_i}{B^2} \partial_t \nabla_{\perp} \Phi \right] &= \nabla \cdot (j_{\parallel} \mathbf{b}) \\ \frac{1}{\sigma_{\parallel}} j_{\parallel} + \frac{m_e}{n_e e^2} \partial_t j_{\parallel} &= \left(\frac{T_e}{e} \nabla_{\parallel} \ln n_e - \nabla_{\parallel} \Phi \right) \cdot \mathbf{b} - \partial_t A_{\parallel} \\ \nabla \cdot \nabla_{\perp} A_{\parallel} &= -\mu_0 j_{\parallel} \end{aligned}$$

We expect a decaying standing wave with frequency:

$$\omega_0^2 \approx \frac{v_A^2 + K k_{\perp}^2}{1 + C k_{\perp}^2} k_{\parallel}^2$$

The parallel wave speed is bound by:

- Alfvén wave group velocity $v_A^2 = \frac{B^2}{m_i n_i \mu_0}$ for low k_{\perp}
- Electron thermal speed $v_{th,e}^2 = \frac{K}{C} = \frac{e T_e}{m_e}$ for high k_{\perp}



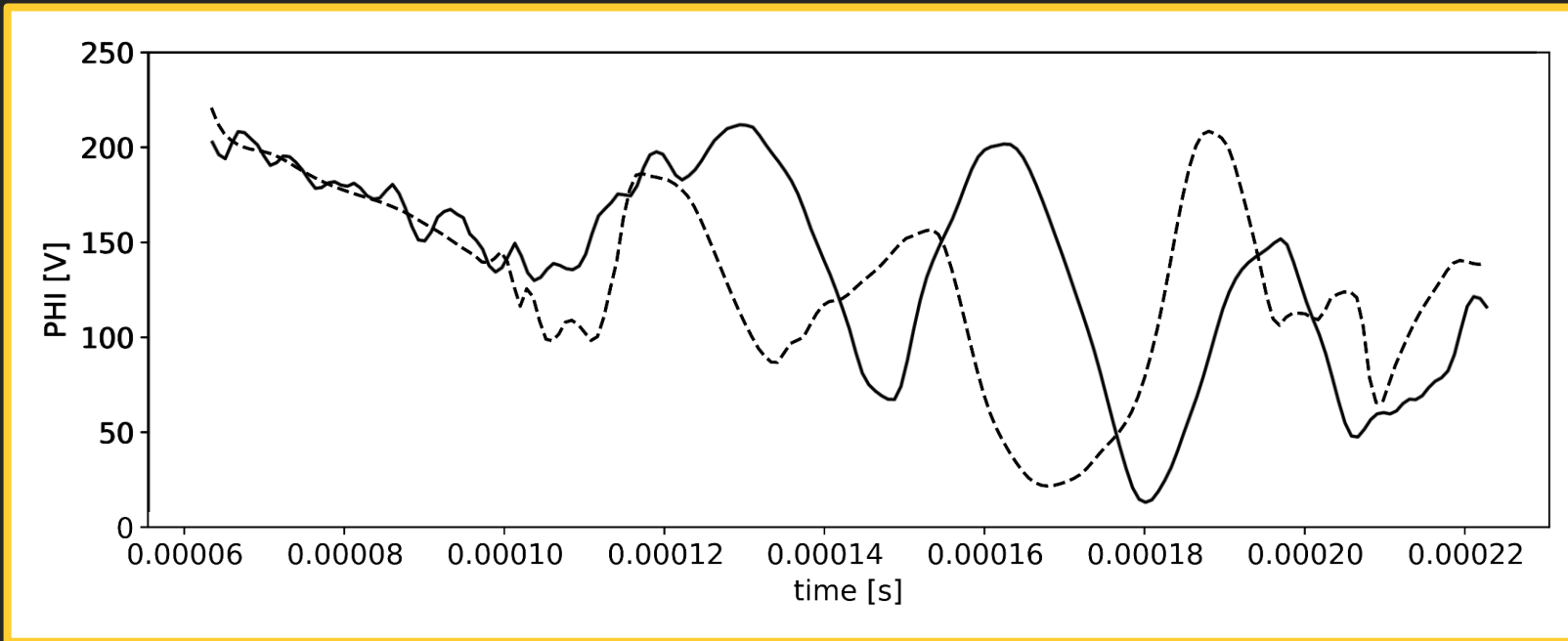
Simulation on a 3D SLAB with 63 points per dimension
Good agreement with [Stegmeir et al, PP 2019]



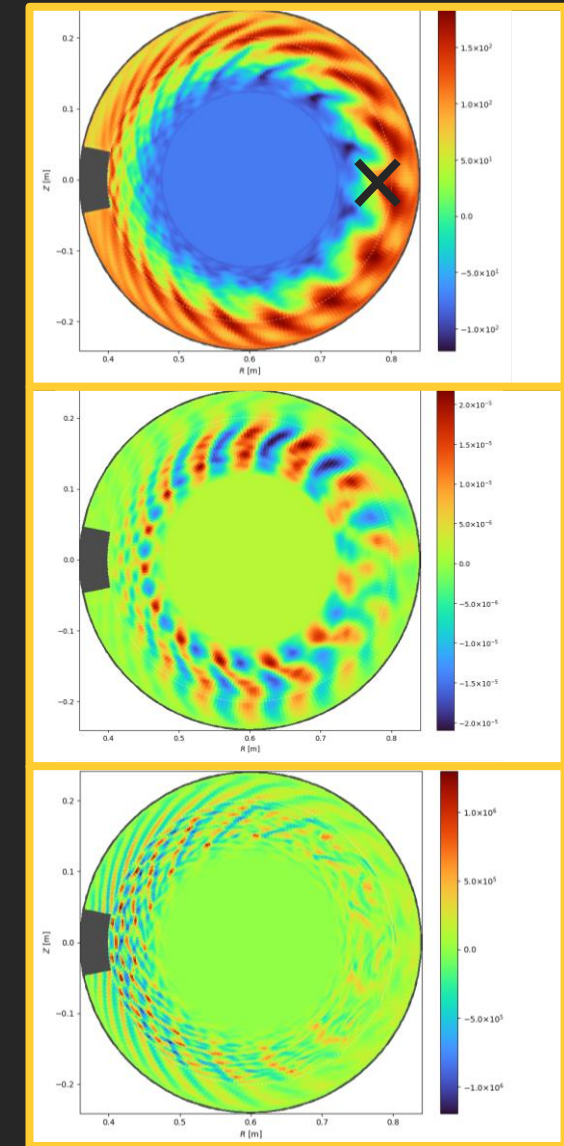
4 ■ First electromagnetic turbulent simulations

Electromagnetic profiles

- Simulations on a limiter geometry with a constant density and energy source at the core



Time evolution of the electric potential at one point in the domain
dashed line: electrostatic scenario
full line: electromagnetic scenario



Φ [V]

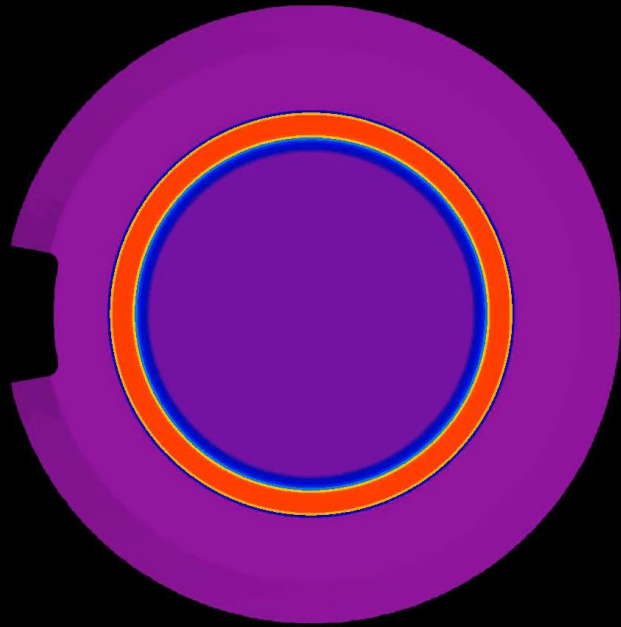
\tilde{A}_{\parallel} [Tm]

j_{\parallel} [Am⁻²]

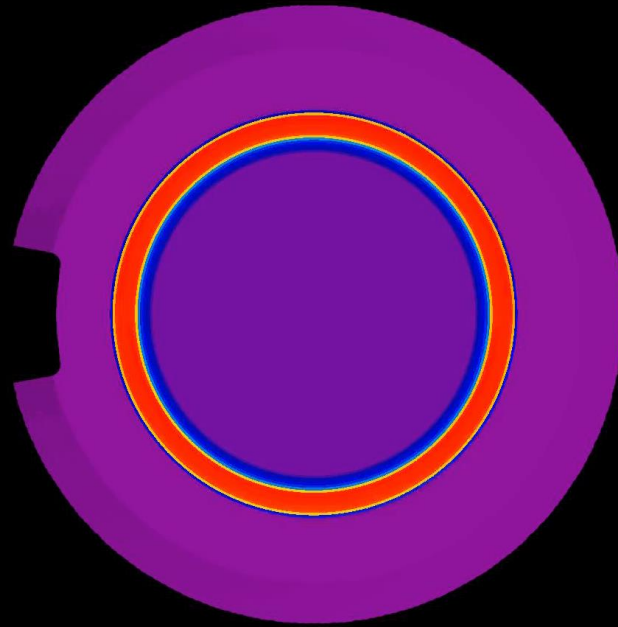
Snapshots at the first poloidal plane with fully developed turbulence

Videos of a turbulent run

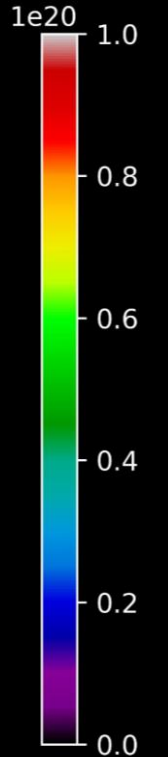
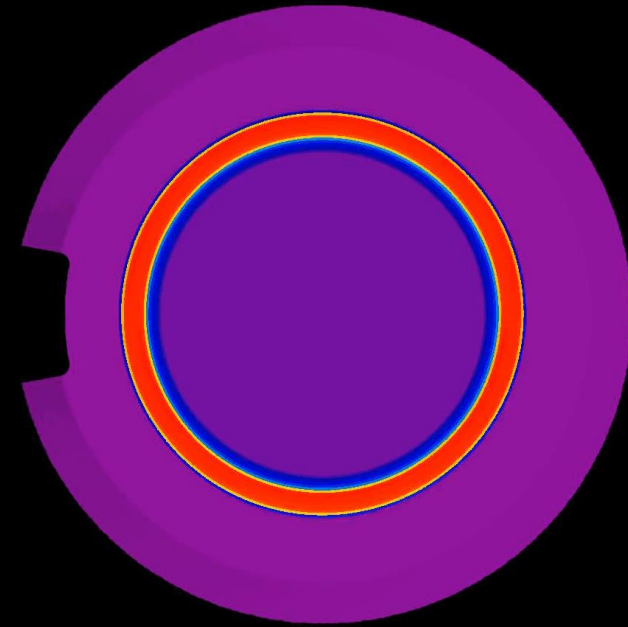
Electrostatic
scenario



Electromagnetic
scenario



Electromagnetic
scenario with flutter



Evolution of the ion density $n_i [m^{-3}]$



5 ■ **Conclusions and perspectives**

Conclusions and perspectives

- Addition of two new fields to the Soledge3X model:
 - the parallel electromagnetic vector potential A_{\parallel}
 - the parallel current density j_{\parallel} with finite electron mass
 - improves the numerical stability
 - constrains the Alfvén wave speed
- Validation of the new model
 - Verification via the Method of Manufactured Solutions
 - Dispersion relation verified by simulations
- Perspectives for future work
 - Extensive investigation of electromagnetic effects on the turbulent transport
 - Evaluate the impact of β on the plasma
 - Extend to X-point geometry