



HAL
open science

Sex specific associations in genome wide association analysis of renal cell carcinoma

Ruhina S Laskar, David C. Muller, Peng Li, Mitchell J Machiela, Yuanqing Ye, Valerie Gaborieau, Matthieu Foll, Jonathan N Hofmann, Leandro Colli, Joshua N Sampson, et al.

► **To cite this version:**

Ruhina S Laskar, David C. Muller, Peng Li, Mitchell J Machiela, Yuanqing Ye, et al.. Sex specific associations in genome wide association analysis of renal cell carcinoma. *European Journal of Human Genetics*, 2019, 27 (10), pp.1589-1598. 10.1038/s41431-019-0455-9 . cea-04449401

HAL Id: cea-04449401

<https://cea.hal.science/cea-04449401v1>

Submitted on 9 Feb 2024

HAL is a multi-disciplinary open access archive for the deposit and dissemination of scientific research documents, whether they are published or not. The documents may come from teaching and research institutions in France or abroad, or from public or private research centers.

L'archive ouverte pluridisciplinaire **HAL**, est destinée au dépôt et à la diffusion de documents scientifiques de niveau recherche, publiés ou non, émanant des établissements d'enseignement et de recherche français ou étrangers, des laboratoires publics ou privés.



ARTICLE

Sex specific associations in genome wide association analysis of renal cell carcinoma

Ruhina S. Laskar¹ · David C. Muller² · Peng Li³ · Mitchell J. Machiela⁴ · Yuanqing Ye⁵ · Valerie Gaborieau¹ · Matthieu Foll¹ · Jonathan N. Hofmann⁴ · Leandro Colli⁴ · Joshua N. Sampson⁴ · Zhaoming Wang⁶ · Delphine Bacq-Daian⁷ · Anne Boland⁷ · Behnoush Abedi-Ardekani¹ · Geoffroy Durand¹ · Florence Le Calvez-Kelm¹ · Nivonirina Robinot¹ · Helene Blanche⁸ · Egor Prokhortchouk^{9,10} · Konstantin G. Skryabin^{9,10} · Laurie Burdett⁴ · Meredith Yeager⁴ · Sanja Radojevic-Skodric¹¹ · Slavisa Savic¹² · Lenka Foretova¹³ · Ivana Holcatova¹⁴ · Vladimir Janout^{15,16} · Dana Mates¹⁷ · Stefan Rascu¹⁸ · Anush Mukeria¹⁹ · David Zaridze¹⁹ · Vladimir Bencko²⁰ · Cezary Cybulski²¹ · Eleonora Fabianova²² · Viorel Jinga¹⁸ · Jolanta Lissowska²³ · Jan Lubinski²¹ · Marie Navratilova¹³ · Peter Rudnai²⁴ · Beata Świątkowska²⁵ · Simone Benhamou^{26,27} · Geraldine Cancel-Tassin^{28,29} · Olivier Cussenot^{28,29} · Antonia Trichopoulou³⁰ · Elio Riboli² · Kim Overvad³¹ · Salvatore Panico³² · Borje Ljungberg³³ · Raviprakash T. Sitaram³³ · Graham G. Giles^{34,35} · Roger L. Milne^{34,35} · Gianluca Severi^{34,36} · Fiona Bruinsma³⁴ · Tony Fletcher³⁷ · Kvetoslava Koppova²² · Susanna C. Larsson³⁸ · Alicja Wolk³⁸ · Rosamonde E. Banks³⁹ · Peter J. Selby³⁹ · Douglas F. Easton^{40,41} · Paul Pharoah^{40,41} · Gabriella Andreotti⁴ · Laura E Beane Freeman⁴ · Stella Koutros⁴ · Demetrius Albanes⁴ · Satu Männistö⁴² · Stephanie Weinstein⁴ · Peter E. Clark⁴³ · Todd L. Edwards⁴³ · Loren Lipworth⁴³ · Hallie Carol⁴⁴ · Matthew L. Freedman⁴⁴ · Mark M. Pomerantz⁴⁴ · Eunyoung Cho⁴⁵ · Peter Kraft⁴⁶ · Mark A. Preston⁴⁷ · Kathryn M. Wilson⁴⁶ · J. Michael Gaziano⁴⁷ · Howard D. Sesso⁴⁶ · Amanda Black⁴ · Neal D. Freedman⁴ · Wen-Yi Huang⁴ · John G. Anema⁴⁸ · Richard J. Kahnoski⁴⁸ · Brian R. Lane^{48,49} · Sabrina L. Noyes⁵⁰ · David Petillo⁵⁰ · Bin Tean Teh⁵⁰ · Ulrike Peters⁵¹ · Emily White⁵¹ · Garnet L. Anderson⁵² · Lisa Johnson⁵² · Juhua Luo⁵³ · Wong-Ho Chow⁵ · Lee E. Moore⁴ · Toni K. Choueiri⁴⁴ · Christopher Wood⁵ · Mattias Johansson¹ · James D. McKay¹ · Kevin M. Brown⁴ · Nathaniel Rothman⁴ · Mark G. Lathrop⁵⁴ · Jean-Francois Deleuze^{7,8} · Xifeng Wu⁵ · Paul Brennan¹ · Stephen J. Chanock⁴ · Mark P. Purdue⁴ · Ghislaine Scelo¹

Received: 8 March 2018 / Revised: 21 May 2019 / Accepted: 28 May 2019 / Published online: 23 June 2019
© The Author(s), under exclusive licence to European Society of Human Genetics 2019

Abstract

Renal cell carcinoma (RCC) has an undisputed genetic component and a stable 2:1 male to female sex ratio in its incidence across populations, suggesting possible sexual dimorphism in its genetic susceptibility. We conducted the first sex-specific genome-wide association analysis of RCC for men (3227 cases, 4916 controls) and women (1992 cases, 3095 controls) of European ancestry from two RCC genome-wide scans and replicated the top findings using an additional series of men (2261 cases, 5852 controls) and women (1399 cases, 1575 controls) from two independent cohorts of European origin. Our study confirmed sex-specific associations for two known RCC risk loci at 14q24.2 (*DPF3*) and 2p21(*EPAS1*). We also identified two additional suggestive male-specific loci at 6q24.3 (*SAMD5*, male odds ratio (OR_{male}) = 0.83 [95% CI = 0.78–0.89], P_{male} = 1.71×10^{-8} compared with female odds ratio (OR_{female}) = 0.98 [95% CI = 0.90–1.07], P_{female} = 0.68) and 12q23.3 (intergenic, OR_{male} = 0.75 [95% CI = 0.68–0.83], P_{male} = 1.59×10^{-8} compared with OR_{female} = 0.93 [95% CI = 0.82–1.06], P_{female} = 0.21) that attained genome-wide significance in the joint meta-analysis. Herein, we provide evidence of sex-specific associations in RCC genetic susceptibility and advocate the necessity of larger genetic and genomic studies to unravel the endogenous causes of sex bias in sexually dimorphic traits and diseases like RCC.

Supplementary information The online version of this article (<https://doi.org/10.1038/s41431-019-0455-9>) contains supplementary material, which is available to authorized users.

✉ Ghislaine Scelo
scelog@iarc.fr

Extended author information available on the last page of the article.

Introduction

Kidney cancer is the 12th most common malignancy in the world with estimated 337,860 new cases and 143,406 deaths in 2012 [1]. Renal cell carcinoma (RCC) accounts for ~90% of all kidney cancers [2]. The incidence differs

significantly by sex, with two-fold higher rates for men than women. The 2:1 sex ratio has been consistent over time, across different age groups, geographical locations and ethnic backgrounds; and, hence, the male excess cannot be explained by differences in environmental or lifestyle exposures and hormonal factors alone [3, 4]. Although there is recent evidence of sexual dimorphism at the genomic level, sex chromosome differences have gained most attention [5]. The first comprehensive sex-specific somatic alteration analysis of 13 cancer types from The Cancer Genome Atlas (TCGA) revealed extensive sex differences in autosomal gene expression and methylation signatures of kidney cancer, although it did not consider germline variation between sexes [6]. A genetic contribution to RCC susceptibility is well documented. Besides the rare inherited germline variants implicated in some familial RCCs, e.g., *VHL* (von Hippel-Lindau disease), *MET* (hereditary papillary renal cancer), *FLCN* (Birt-Hogg-Dubé syndrome) and *FH* (hereditary leiomyomatosis and renal cell cancer) genes [7], large genome-wide association studies (GWAS) have identified 13 autosomal RCC susceptibility loci implicating several candidate genes (supplementary table 1) [8–13]. A role for sex in modifying genetic susceptibility to RCC is possible, but, unlike many other sexually dimorphic diseases and traits [14–16], no genome-wide, systematic effort to study possible sex specific genetic contributions to kidney cancer risk has been undertaken.

We conducted a sex-specific genome wide association analysis of kidney GWAS datasets consisting of 13,230 individuals (8193 men, 5087 women) using approximately 6 million genotyped and imputed SNPs in sex-stratified and sex interaction models and replicated the top findings using another 8113 men and 2974 women. To explore the possibility of sex-specific gene regulation of the top genotypic variants, we performed an expression quantitative trait loci (eQTL) analysis using paired genotyping and gene expression data from normal and kidney tumour tissues of a subset of the genetic discovery cohort.

Methods

Genetic association analysis

Discovery

The International Agency for Research on Cancer (IARC) kidney cancer GWAS have been previously described [12]. The dataset consisted of two IARC-Centre National de Genotypage (CNG) scans using 11 studies recruited from 18 countries and included a total of 5219 RCC cases (1992 women, 3227 men) and 8011 controls (3095 women, 4916 men) of European descent, the first being genotyped using

HumanHap 317k, 550 or 610Q, and the second using Omni5 and OmniExpress arrays. Quality control (QC) assessments applied to the data have been previously described [8, 12]. Briefly, we used the following quality control measures at individual levels as exclusion criteria, genotype success rate of <95%, discordant sex, duplication or relatedness based on IBD score >0.185 and samples with <80% European ancestry. SNP exclusion criteria included call rate <90%, departure from Hardy Weinberg equilibrium in controls at $P < 10^{-7}$, and MAF <0.05. Imputation of genotypes was done by minimac version 3 using 1094 subjects from the 1000 Genomes Project (phase 1 release 3) as the reference panel and ~6 million SNPs were retained for the final analysis after post imputational QC steps ($r^2 > 0.3$). Genome Reference Consortium Human Build 37 (GRCh37/hg19) was used to map variants. Population stratification analysis (implemented in EIGENSTRAT using EIGENSOFT software version 5.0.2) [17] on the pooled dataset identified 19 significant ($P < 0.05$) eigenvectors, showing significant association with the country of recruitment. Informed consent from the study participants and approval from the IARC Institutional Review Board (IARC Ethics Committee) was obtained.

SNP selection

Sexually dimorphic SNPs could have (i) a concordant effect direction (CED), if the association is present (i.e., significant after multiple testing correction) for one sex and nominally significant and directionally concordant for the other, (ii) single sex effect (SSE), if the association is present for one sex only, or (iii) opposite effect direction (OED), if the association is present for one sex, at least nominally significant and in opposite direction for the other sex [16]. Previous studies on sex-specific genetic associations indicated that sex-specific scans had a higher probability to select SNPs with CED or SSE signal, while sex-interaction scans had a higher probability to select SNPs with OED [16]. Therefore, in the discovery phase, we conducted both sex stratified and sex interaction scans. For the sex-stratified analysis, a log-additive model using unconditional logistic regression adjusted for age, study and the significant eigenvectors were used to identify associations. For the sex interaction analysis, a regression model including the main effects of the genotypes, sex, covariates and an interaction term for genotypes and sex was used to detect association. We applied a false-discovery-rate (FDR) approach separately for male and female datasets to account for multiple testing and the difference in sample size. This allows the stratified study design of the discovery stage to be less stringent in identifying hits, while keeping the stringency of conventional Bonferroni cutoff in the

combined (discovery + replication) stage for the final interpretation of results. FDR q -value cut offs of 5 and 30% were used to detect significant and suggestive SNPs respectively in each of the datasets. Accordingly, p -value threshold of 1×10^{-6} and 4×10^{-6} was considered to be significant (5% FDR) and p -value threshold of 1.1×10^{-5} and 5×10^{-5} was considered suggestive (30% FDR) for female and male datasets respectively. In addition to the significant and suggestive sex-specific p -values, a nominally significant ($P < 0.05$) sex interaction p -value was taken into account in order to identify SNPs showing sex difference. The same FDR cut-offs were used to detect significant and suggestive signals in interaction tests (Supplementary figure S1). All association analyses were conducted using R statistical software version 3.3 implemented in high performance computing cluster. In addition, a clear LD cluster (atleast one correlated SNP with $r^2 > 0.5$ within 1 Mb window) for the SNP was also considered as a criterion to avoid false positives. Among multiple SNPs in LD ($r^2 > 0.8$, with LD-window of 1 Mb) showing an association, we choose the one with the lowest missing rate and p -value. All regional LD plots were generated in LocusZoom using genome build hg19 and 1000 Genomes EUR as LD population [18]. To focus on common SNPs and to avoid spurious association, as a QC step we removed the SNPs having $MAF < 0.05$ and without LD cluster (supplementary figure S2),

In-silico replication and joint meta-analysis

In-silico replication of the top hits from the discovery phase was conducted using 3660 cases (1399 women, 2261 men) and 7427 controls (1575 women, 5852 men) from two previously published National Cancer Institute (NCI, Bethesda, Maryland, USA) and one MD Anderson Cancer Center (MDA, Texas, USA) RCC GWAS scans genotyped using OmniExpress, Omni2.5, HumanHap 550, 610 and 660 W beadchip arrays. Quality control and genotype imputation was done as described previously [8, 9, 12]. For each study, sex-stratified and sex-interaction models for all significant and suggestive SNPs were tested assuming a log-additive model of genetic effects using unconditional logistic regression with adjustment for age, study centre, and significant eigenvectors. The odds ratios and 95% confidence intervals per SNP from each study were meta-analysed using fixed-effect models implemented in GWAMA [19], to get the combined estimates from the replication series. We also performed a joined meta-analysis of results from the discovery and replication series on 8061 women and 16,256 men to get the combined effect estimates of the tested SNPs. Heterogeneity in genetic effects across datasets was assessed using the I² and Cochran's Q statistics.

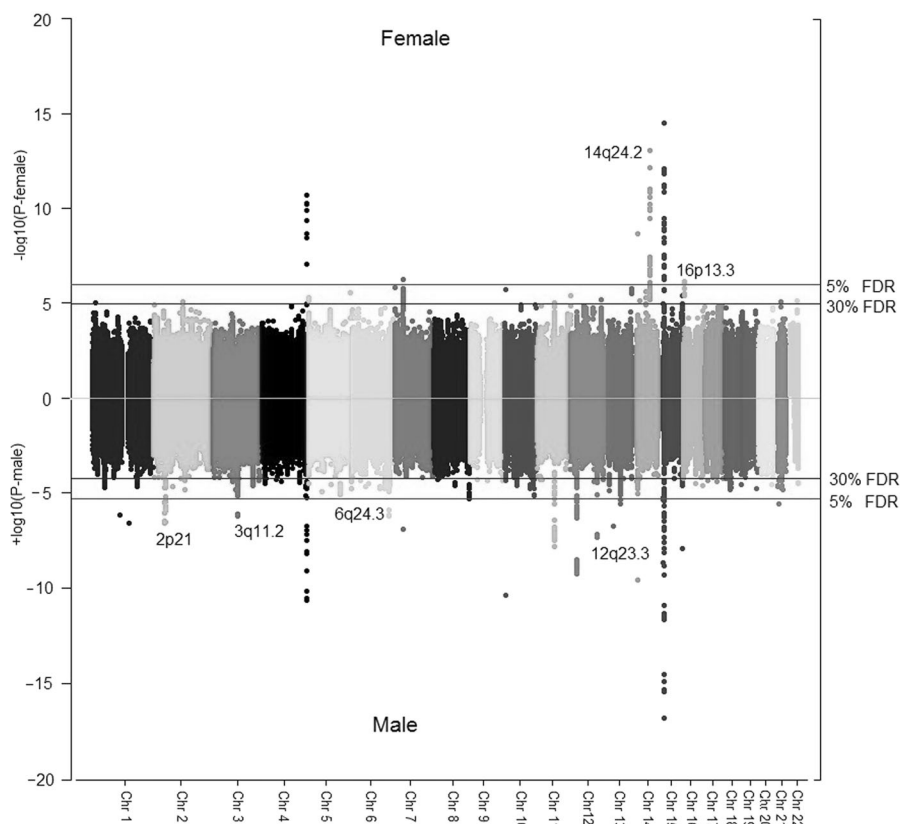
Expression QTL analysis of the selected SNPs

To identify gene regulatory effects of the 17 identified SNPs, we examined transcript expression near each of the SNPs in 101 tumour adjacent normal and 259 tumour kidney tissues in women and 178 tumour adjacent normal and 385 tumour kidney tissues in men. All of these kidney samples were part of the discovery GWAS study (112 from first IARC GWAS and 532 samples from second IARC GWAS) and the eQTL analysis was performed on matched gene expression and GWAS datasets. Expression analysis was conducted using Illumina HumanHT-12 v4 expression BeadChips (Illumina, Inc., San Diego), normalised using variance stabilising transformation (VST) and quantile normalisation. Out of the 17 transcripts, 12 transcripts in normal samples and 14 in tumours were expressed in $< 10\%$ of the samples. Expression for *MIR4472-1* was not available for both tumour and normal samples in our dataset. For the few transcripts showing sex-difference in expression in our dataset, we also downloaded raw counts of RNA-seq data from 60 normal and 459 tumours from TCGA kidney renal cell carcinoma (TCGA-KIRC) and used as a validation cohort. For eQTL analysis, additive linear models were used to test the association between each transcript and SNP with age, country, tumour stage and grade as covariates. All transcripts with expression in $< 10\%$ of the samples were filtered out from eQTL analysis. All available transcripts mapping to each SNP were evaluated, and FDR adjusted p -value < 0.05 using Benjamini–Hochberg procedure was used as statistical significance threshold. All probes overlapping SNPs with European-ancestry having $MAF > 0.01$ were filtered out. Colocalization of GWAS and eQTL signals were analysed used eCAVIAR software [20].

Results

In the discovery phase, sex-specific analysis identified an excess of SNPs with association p -values < 0.05 . However, only a few loci could reach the significant (5% FDR) or suggestive (30% FDR) association thresholds, among which only 4 loci in women and 7 in men attained Bonferroni genome-wide significance threshold ($P < 5E-08$) (Fig. 1). The association quantile-quantile plots indicated little inflation for both the datasets ($\lambda_{\text{female}} = 1.02$, $\lambda_{\text{male}} = 1.04$; supplementary figure S3a, b). Following MAF and LD based QC, a total of 17 sex-specific SNPs (6 significant and 11 suggestive) were selected for follow-up. Among the 17 SNPs, 15 were single sex-specific signals (SSE) and the 2 other SNPs namely, rs4903064 and rs6554676 showing CED were strongly associated in women and nominally in men (Supplementary table 2). Among the 15 single sex-

Fig. 1 Sex stratified genome-wide association scan in renal cell carcinoma: Manhattan plots of male and female specific association P -values from the discovery series



specific signals, 7/15 associations were male-specific, whereas, 8/15 SNPs were female-specific (Supplementary table 3). The strongest association was observed for rs4903064 in females ($OR_{\text{female}} = 1.47$ [95% CI = 1.33–1.62], $P_{\text{female}} = 9 \times 10^{-14}$ compared with $OR_{\text{male}} = 1.09$ [95% CI = 1.01–1.19], $P_{\text{male}} = 0.02$; $P_{\text{interaction}} = 1.7 \times 10^{-5}$, Table 1) at 14q24.2 mapping to an intronic region of *DPF3* (Fig. 2). Other significant SNPs in discovery series, rs2121266 at 2p21, rs12930199 at 16p13.3 and rs1548141 at 3q11.2 mapped to the intronic regions of *EPAS1*, *RBFOX1* and *OR5H6*, respectively. Significant SNPs rs10484683 and rs78971134 mapped to intergenic regions at 7p22.3 and 6q24.3, with the nearest genes being *BTBD11* and *SAMD5*, respectively. For rs78971134 (*SAMD5*) the minor allele frequencies were similar for male and female cases. Regional LD plots for each of the loci are detailed in Supplementary Figure S4 (a) and (b). In contrast, the sex-interaction scan did not identify any SNP even at 30% FDR, except for the very rare variant rs141939233 (NC_000003.11:g.94783768 C > G, MAF = 0.001, $P = 9.83 \times 10^{-8}$) which did not meet the inclusion criteria for SNPs (MAF > 0.05) and hence, no SNP could be carried forward (Supplementary figure 5a, b). Overall, all putative variants showed either CED or SSE and no SNP with an OED could be identified from the analysis.

In the *in-silico* replication of the 17 selected SNPs, only rs4903064 (at *DPF3*) independently replicated with

stronger and significant ($p < 0.05$) effect in women compared with men ($OR_{\text{female}} = 1.24$ [95% CI = 1.07–1.42], $P_{\text{female}} = 3 \times 10^{-3}$ compared with $OR_{\text{male}} = 1.09$ [0.98–1.21], $P_{\text{male}} = 0.09$). In addition rs147304092 (*BBS9*), rs13027293 (*STEAP3*), rs6554676 (*SLC6A18*) showed nominally significant association with RCC risk for either men or women in the follow-up series (Table 1).

In the joint meta-analysis of the discovery and replication series for the selected 17 SNPs, a total of 4 SNPs attained genome-wide significance (Table 1). In addition to the consistent findings for *DPF3*, we found a stronger association for males for *EPAS1* but with significant study heterogeneity in the female dataset. Two additional SNPs that reached genome-wide significance in the joint meta-analysis were rs10484683 at *SAMD5* and rs78971134 near *BTBD11* showing an association with risk for men but not women (Table 1). The results of replication and final meta-analysis of all the 17 SNPs are listed in supplementary table 3.

We also examined sex-specific expression of genes corresponding to the selected SNPs using expression data in normal and tumour kidney tissues from a subset of the discovery cohort. Significant sex-difference in expression was detected for *BTBD11* gene in normal tissues and also a higher expression of *SAMD5* in tumour tissues of women (Supplementary table 4). We replicated the findings for sex difference in expression between men and women for *SAMD5* in TCGA KIRC cohort and also observed

Table 1 Significant associations in the replication series and/or final joint meta-analysis

SNP	HGVS Nomenclature (GRCh37)	Nearest gene	Reference Allele#	Alternate Allele	Effect Allele#	Discovery			Replication			Combined							
						Female (N = 5087)		Male (N = 8143)		Female (N = 2974)		Male (N = 8113)		Female (N = 8061)		Male (16,256)			
						OR	P	OR[95%CI]	P	OR[95%CI]	P	OR[95%CI]	P	OR	P	OR	P		
rs4903064	NC_000014.8: g-73279420 T > C	<i>DPF3</i> **	T	C	C	1.47 [1.33-1.62]	9.0 × 10 ⁻¹⁴	1.09 [1.01-1.19]	0.02	1.24 [1.07-1.42]	0.003	1.09 [0.98-1.21]	0.10	1.38 [1.27-1.50]	1.5 × 10 ⁻¹⁴	0.10	1.09 [1.03-1.16]	0.005	0.54
rs2121266	NC_000002.11: g-46535924 C > A	<i>EPAS1</i> **	C	A	C	1.06 [0.97-1.15]	2.5 × 10 ⁻⁷	1.2 [1.12-1.28]	0.03	1.14 [1.00-1.30]	0.03	1.15 [1.05-1.26]	0.002	1.09 [1.01-1.17]	0.02	0.001	1.18 [1.12-1.25]	1.8 × 10 ⁻⁹	0.62
rs147304092	NC_000007.13: g-33442937 A > G	<i>BBS9</i> *	A	G	G	0.62 [0.52-0.76]	2.0 × 10 ⁻⁶	1.05 [0.91-1.22]	0.49	0.97 [0.76-1.24]	0.82	1.20 [1.00-1.43]	0.05	0.72 [0.63-0.84]	1.0 × 10 ⁻⁵	0.03	1.11 [0.99-1.24]	0.08	0.54
rs13027293	NC_000002.11: g-120001118 G > T	<i>STEAP3</i> *	G	T	T	1.23 [1.12-1.35]	8.0 × 10 ⁻⁶	0.96 [0.89-1.03]	0.28	0.87 [0.77-1.00]	0.04	1.00 [0.91-1.10]	0.95	1.10 [1.02-1.19]	0.01	1.6 × 10 ⁻⁴	0.97 [0.92-1.03]	0.37	0.52
rs6554676	NC_000005.9: g-1233350 A > T	<i>SLC6A18</i> *	A	T	A	0.62 [0.51-0.77]	6.0 × 10 ⁻⁶	0.81 [0.69-0.95]	0.008	0.80 [0.61-1.05]	0.11	0.81 [0.67-0.99]	0.04	0.68 [0.58-0.81]	6.1 × 10 ⁻⁶	0.07	0.81 [0.72-0.92]	0.001	0.67
rs10484683	NC_000006.11: g-148152077 A > G	<i>SAMD5</i> **	A	G	G	0.96 [0.87-1.07]	4.7 × 10 ⁻⁷	0.8 [0.74-0.88]	0.48	1.04 [0.89-1.21]	0.63	0.93 [0.82-1.04]	0.20	0.98 [0.90-1.07]	0.68	2.9 × 10 ⁻⁴	0.83 [0.78-0.89]	1.7 × 10 ⁻⁸	0.20
rs78971134	NC_000012.11: g-107652531 A > G	<i>BTBD11</i> **	A	G	G	0.91 [0.78-1.06]	0.23	0.69 [0.61-0.79]	4.5 × 10 ⁻⁸	0.97 [0.78-1.20]	0.78	0.87 [0.74-1.03]	0.10	0.93 [0.82-1.06]	0.26	0.21	0.75 [0.68-0.83]	1.6 × 10 ⁻⁸	0.15

** indicates association identified at < 5% FDR and * indicates association identified at < 30% FDR in the discovery series;

OR [95% CI] Odds Ratio [95% confidence interval]; Meta P-Value Meta-analysis P-value; Het P-value heterogeneity P-value among studies, HGVSHuman Genome Variation Society

Reference and alternate alleles as given by dbSNP; # Allele for which the effect size was calculated

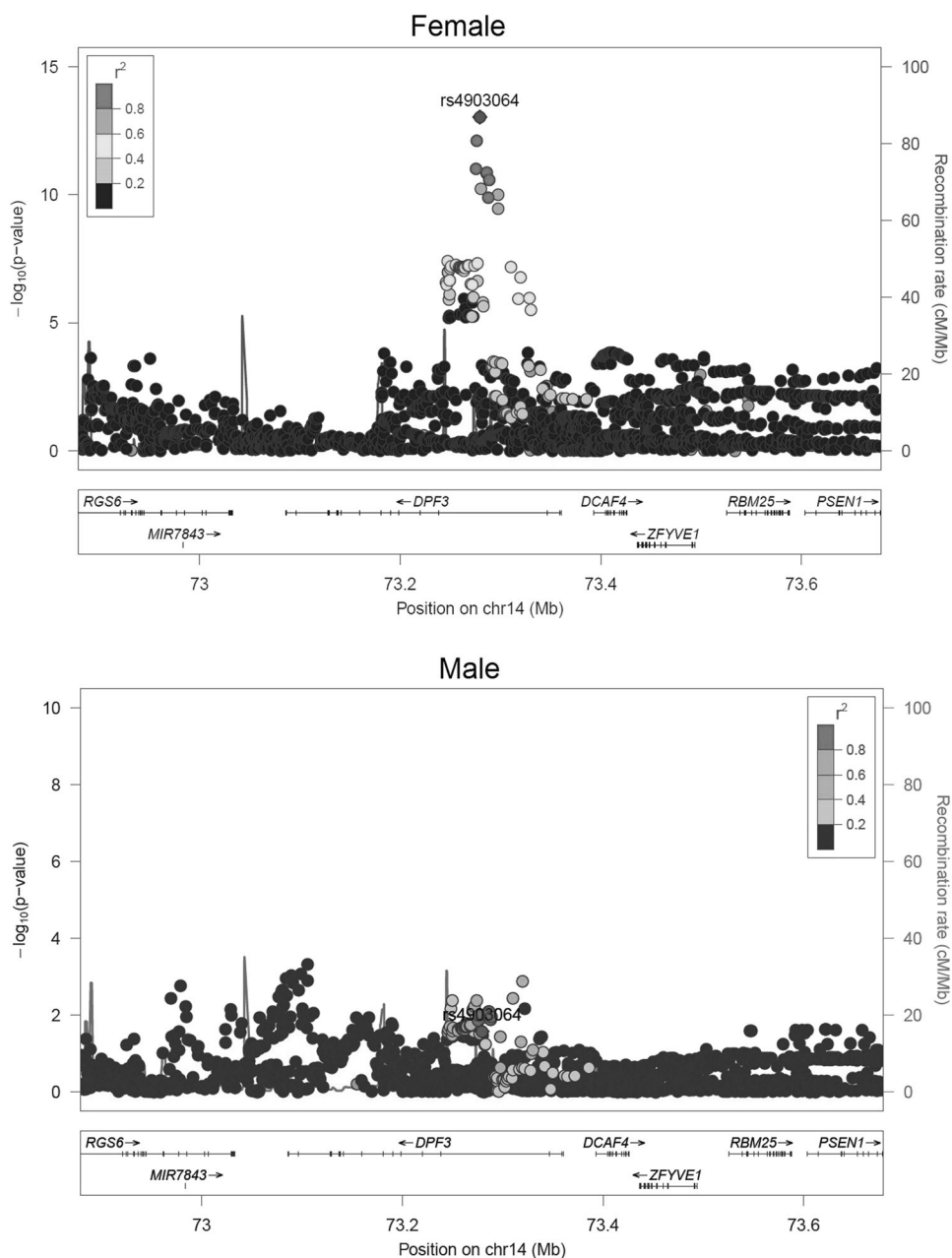
significant differential expression between tumour and normal samples (Supplementary figure 6). We further tested the effect of the identified SNPs on expression of nearby genes by detecting *cis* expression quantitative trait loci (eQTL) in kidney tissues. No significant eQTL was identified for any of the 17 SNP-transcript pairs in normal tissues (supplementary table 5), but we identified rs4903064 as the lead *cis*-eQTL for *DPF3* expression in tumours with highest collocation posterior probability with the GWAS signal (Supplementary figure S7). We further examined sex-specific *cis*-eQTLs and found a stronger association of rs4903064 on *DPF3* for women compared with men ($\beta_{\text{women}} = 0.06$, $P_{\text{women}} = 2.69 \times 10^{-6}$ vs $\beta_{\text{men}} = 0.03$, $P_{\text{men}} = 0.004$, $P_{\text{sex_interaction}} = 0.03$ Fig. 3). A borderline association was also observed for rs6554676 and *SLC6A18* expression in male tumour tissues only ($\beta_{\text{male}} = -0.21$, $P_{\text{male}} = 0.05$ vs $\beta_{\text{female}} = -0.01$, $P_{\text{female}} = 0.94$).

Discussion

We conducted the first systematic sex-specific genome-wide association analysis of RCC and confirmed sexually dimorphic associations for two previously known risk SNPs on *DPF3* and *EPAS1* at 14q24 and 2p21, respectively. In a joint meta-analysis of top hits using 8,061 women and 16,256 men, we also identified two additional suggestive SNPs (rs10484683 at *SAMD5* and rs78971134 near *BTBD11*) with possible sex-specific associations – both being associated with a risk for men, and with no strong evidence of association for women.

The SNP rs4903064 at *DPF3* gene was previously reported to be associated with increased RCC risk in a large GWAS [12], and our analysis confirms the previous reports of its sex-specific association. We further provide evidence that the association might be mediated through expression of the gene, with the magnitude of the association between the SNP and expression being greater for women than men. Polymorphisms at intron 1 of *DPF3* are also associated with increased risk of breast cancer for women of European origin, but the SNPs were not in linkage disequilibrium with rs4903064 [21]. *DPF3* is a histone acetylation and methylation reader of the BAF and PBAF chromatin remodelling complexes. Other components of the complexes like *BAP1* and *PBRM1* are frequently mutated in RCC and show sex differences in their mutation frequency and association with survival [22]. Chromatin-remodelling complexes regulate gene expression and loss of these chromatin modifiers has been associated with characteristic gene expression signatures in RCC [23, 24]. Sexually dimorphic gene expression is frequent in both murine [25] and human [6, 26] kidney normal and tumour tissues, and is hypothesised to contribute to the mechanism underlying sex-difference in kidney diseases

Fig. 2 Regional plot of the most significant sex-specific loci: P -values and LD among SNPs at 14q24.2 mapping to the *DPF3* gene in women and men



including cancer [5, 27]. Therefore, variants of chromatin remodelling complex associated genes might modify RCC risk differently for men and women through sex-specific gene expression but the exact mechanism remains speculative and requires detailed functional studies in vitro.

The SNP rs2121266 mapping to intron 1 of the *EPAS1* gene is in strong linkage disequilibrium ($r^2 = 0.97$, $D' = 1.00$) to the previously described risk SNP rs11894252 at 2p21 [8]. Our finding of a stronger association for men is in agreement with previous findings of stronger associations for the proxy SNP rs11894252 for men ($OR_{\text{male}} = 1.18$ compared with $OR_{\text{female}} = 1.06$, $P_{\text{interaction}} = 0.03$) in RCC. Additionally, sexually dimorphic associations for *EPAS1*

variants were also observed for rs13419896 in lung squamous cell carcinoma [28] and rs4953354 in lung adenocarcinoma [29] in two independent reports from a Japanese population. *EPAS1* (*HIF2 α*) is a key gene in RCC and functions as a transcription factor in the *VHL*–*HIF* signaling axis [30, 31]. The intron 1 of *EPAS1* contains oestrogen response elements (EREs) and oestrogen-dependent down-regulation of *EPAS1* occurs in invasive breast cancer cells [32]. RCC related polymorphisms near other important genes like *CCND1*, *MYC/PVT1* have been found on enhancers at tissue-specific *HIF*-binding loci in renal tubular cells [33, 34], implying a role for *HIF* in transactivation of key oncogenic pathways in RCC. Although rs2121266

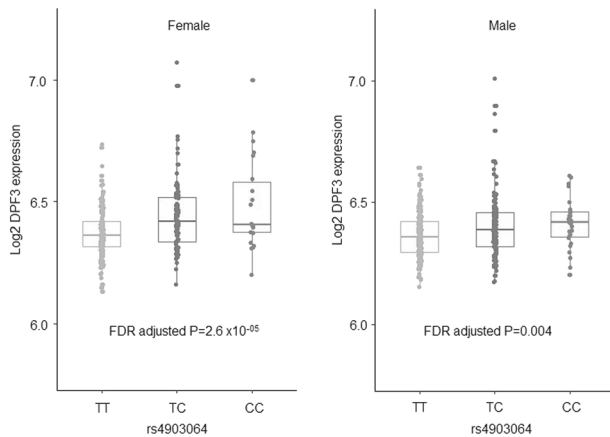


Fig. 3 cis-eQTL: boxplot displaying expression levels of *DPFG3* gene stratified by the risk SNP rs4903064 in women and male kidney tumour tissues

and rs11894252 were not eQTLs for *EPAS1*, it is possible that the role of these polymorphisms in sex hormone mediated regulation of *EPAS1* and transactivation of downstream genes may result in sex-specific susceptibility to RCC.

Two other SNPs that reached genome-wide significance in the joint analysis of discovery and replication series, namely rs10484683 at *SAMD5* and rs78971134 near *BTBD11* have not been previously reported to be associated with risk of RCC. For rs10484683 (*SAMD5*), the sex-specific finding from the discovery stage was driven by MAF differences in the controls only. Hence, the result remains unclear and might be the reason that the apparent association did not replicate. The SNP rs10484683 was not a significant cis eQTL in normal or tumour kidney tissues in our series, but expression of *SAMD5* varied significantly between tumour samples from men and women. Also, a significant overexpression of *SAMD5* in tumours from current and TCGA datasets suggests its potential role in RCC pathogenesis. Although not previously implicated in RCC, *SAMD5* overexpression has been found to be associated with bile duct and cholangiocarcinoma [35]. *BTBD11* gene codes for an ankyrin repeat and BTB/POZ domain-containing protein involved in regulation of proteolysis and protein ubiquitination. Functional implications of this gene is not well known in RCC, but SNPs near the *BTBD11* gene were previously reported to be associated with kidney function traits [36] and diabetic kidney diseases [37] by large genome-wide studies, however, these SNPs were not in LD with the current risk variant rs78971134.

We confirmed sex-specific genetic associations of known RCC risk SNPs and identified new suggestive associations for one sex or the other. No clear pattern of an increased risk for men or decreased risk for women could be observed in the top sexually dimorphic SNPs, as would be otherwise

anticipated for explaining the 2:1 sex ratios. Therefore, these SNPs are not conclusive for untangling the sex-specific genetic susceptibility that might contribute to the sex ratio in incidence. Due to technical constraints we could not examine sex chromosomal associations in the current study. Even given its large sample size, a drawback of the study is its limited statistical power to detect subtle sex-specific associations (SSEs or CEDs), particularly when analysing men and women separately. A male-specific association may simply reflect the lack of power to detect association in women, owing to the smaller sample size for women compared with men. To increase the power to detect sex-specific associations, the combination of results from different GWAS in sex-stratified meta-analyses is warranted. In addition to large well powered sex-specific genetic studies, multi-omics approaches studying both autosomes and sex chromosomes and their interaction with sex hormones might help to unravel the endogenous causes of sex bias in sexually dimorphic traits and diseases like RCC.

Data availability

Genome-wide summary statistics are made available through the NHGRI-EBI GWAS Catalog <https://www.ebi.ac.uk/gwas/downloads/summary-statistics>. Data from the first IARC GWAS scan included in the study are available from Paul Brennan upon reasonable request. The data from second IARC scan are accessible on dbGaP: (phs001271.v1.p1). The first and second NCI scans are accessible on dbGaP (phs000351.v1.p1 and phs001736.v1.p1 respectively). Data from the MDA scan is available from Xifeng Wu upon reasonable request.

Acknowledgements We thank all of the participants who took part in this research and the funders and support staff who made this study possible. Funding for the genome-wide genotyping was provided by the US National Institutes of Health (NIH), National Cancer Institute (U01CA155309) for those studies coordinated by IARC, and by the intramural research program of the National Cancer Institute, US NIH, for those studies coordinated by the NCI. MD Anderson GWAS was supported by NIH (grant R01 CA170298) and the Center for Translational and Public Health Genomics, Duncan Family Institute for Cancer Prevention and Risk Assessment, The University of Texas MD Anderson Cancer Center. Funding for the IARC gene expression and eQTL study was provided by the US National Institutes of Health (NIH), National Cancer Institute (U01CA155309). RSL received IARC Postdoctoral fellowship from the IARC, partially supported by EC FP7 Marie Curie Actions – People – Co-Funding of regional, national and international programmes (COFUND). DCM is supported by a Cancer Research UK Population Research Fellowship. MMCI supported by MH CZ - DRO (MMCI, 00209805).

Compliance with ethical standards

Conflict of interest The authors declare that they have no conflict of interest.

Publisher's note: Springer Nature remains neutral with regard to jurisdictional claims in published maps and institutional affiliations.

References

- Znaor A, Lortet-Tieulent J, Laversanne M, Jemal A, Bray F. International variations and trends in renal cell carcinoma incidence and mortality. *Eur Urol*. 2015;67:519–30.
- Lopez-Beltran A, Scarpelli M, Montironi R, Kirkali Z. 2004 WHO classification of the renal tumors of the adults. *Eur Urol*. 2006;49:798–805.
- Scelo G, Li P, Chanudet E, Muller DC. Variability of sex disparities in cancer incidence over 30 years: the striking case of kidney cancer. *Eur Urol Focus*. 2018;4:586–90.
- Bray FCM, Mery L, Piñeros M, Znaor A, Zanetti R and Ferlay J, editors. *Cancer Incidence in Five Continents, 2017*, Vol. XI (electronic version).
- Clocchiatti A, Cora E, Zhang Y, Dotto GP. Sexual dimorphism in cancer. *Nat Rev Cancer*. 2016;16:330–9.
- Yuan Y, Liu L, Chen H, Wang Y, Xu Y, Mao H, et al. Comprehensive characterization of molecular differences in cancer between male and female patients. *Cancer Cell*. 2016;29:711–22.
- Haas NB, Nathanson KL. Hereditary kidney cancer syndromes. *Adv Chronic Kidney Dis*. 2014;21:81–90.
- Purdue MP, Johansson M, Zelenika D, Toro JR, Scelo G, Moore LE, et al. Genome-wide association study of renal cell carcinoma identifies two susceptibility loci on 2p21 and 11q13.3. *Nat Genet*. 2011;43:60–65.
- Wu X, Scelo G, Purdue MP, Rothman N, Johansson M, Ye Y, et al. A genome-wide association study identifies a novel susceptibility locus for renal cell carcinoma on 12p11.23. *Hum Mol Genet*. 2012;21:456–62.
- Henrion M, Frampton M, Scelo G, Purdue M, Ye Y, Broderick P, et al. Common variation at 2q22.3 (ZEB2) influences the risk of renal cancer. *Hum Mol Genet*. 2013;22:825–31.
- Henrion MY, Purdue MP, Scelo G, Broderick P, Frampton M, Ritchie A, et al. Common variation at 1q24.1 (ALDH9A1) is a potential risk factor for renal cancer. *PLoS ONE*. 2015;10:e0122589.
- Scelo G, Purdue MP, Brown KM, Johansson M, Wang Z, Eckel-Passow JE, et al. Genome-wide association study identifies multiple risk loci for renal cell carcinoma. *Nat Commun*. 2017;8:15724.
- Gudmundsson J, Sulem P, Gudbjartsson DF, Masson G, Petursdottir V, Hardarson S, et al. A common variant at 8q24.21 is associated with renal cell cancer. *Nat Commun*. 2013;4:2776.
- Winkler TW, Justice AE, Graff M, Barata L, Feitosa MF, Chu S, et al. Correction: The influence of age and sex on genetic associations with adult body size and shape: a large-scale genome-wide interaction study. *PLoS Genet*. 2016;12:e1006166.
- Zhuang JJ, Morris AP. Assessment of sex-specific effects in a genome-wide association study of rheumatoid arthritis. *BMC Proc*. 2009;3 (Suppl 7):S90.
- Randall JC, Winkler TW, Kutalik Z, Berndt SI, Jackson AU, Monda KL, et al. Sex-stratified genome-wide association studies including 270,000 individuals show sexual dimorphism in genetic loci for anthropometric traits. *PLoS Genet*. 2013;9:e1003500.
- Price AL, Patterson NJ, Plenge RM, Weinblatt ME, Shadick NA, Reich D. Principal components analysis corrects for stratification in genome-wide association studies. *Nat Genet*. 2006;38:904–9.
- Pruim RJ, Welch RP, Sanna S, Teslovich TM, Chines PS, Gliedt TP, et al. LocusZoom: regional visualization of genome-wide association scan results. *Bioinformatics*. 2010;26:2336–7.
- Magi R, Morris AP. GWAMA: software for genome-wide association meta-analysis. *BMC Bioinf*. 2010;11:288.
- Hormozdiari F, van de Bunt M, Segre AV, Li X, Joo J, Bilow M, et al. Colocalization of GWAS and eQTL signals detects target genes. *Am J Hum Genet*. 2016;99:1245–60.
- Hoyal CR, Kammerer S, Roth RB, Reneland R, Marmellos G, Kiechle M, et al. Genetic polymorphisms in DPF3 associated with risk of breast cancer and lymph node metastases. *J Carcinog*. 2005;4:13.
- Ricketts CJ, Linehan WM. Gender specific mutation incidence and survival associations in clear cell renal cell carcinoma (CCRCC). *PLoS ONE*. 2015;10:e0140257.
- Cancer Genome Atlas Research N. Comprehensive molecular characterization of clear cell renal cell carcinoma. *Nature*. 2013;499:43–49.
- Kapur P, Pena-Llopis S, Christie A, Zhrebker L, Pavía-Jiménez A, Rathmell WK, et al. Effects on survival of BAP1 and PBRM1 mutations in sporadic clear-cell renal-cell carcinoma: a retrospective analysis with independent validation. *Lancet Oncol*. 2013;14:159–67.
- Kwekel JC, Desai VG, Moland CL, Vijay V, Fuscoe JC. Sex differences in kidney gene expression during the life cycle of F344 rats. *Biol Sex Differ*. 2013;4:14.
- Brannon AR, Haake SM, Hacker KE, Pruthi RS, Wallen EM, Nielsen ME, et al. Meta-analysis of clear cell renal cell carcinoma gene expression defines a variant subgroup and identifies gender influences on tumor biology. *Eur Urol*. 2012;61:258–68.
- Huby RD, Graves P, Jackson R. The incidence of sexually dimorphic gene expression varies greatly between tissues in the rat. *PLoS ONE*. 2014;9:e115792.
- Putra AC, Eguchi H, Lee KL, Yamane Y, Gustine E, Isobe T, et al. The A Allele at rs13419896 of EPAS1 is associated with enhanced expression and poor prognosis for non-small cell lung cancer. *PLoS ONE*. 2015;10:e0134496.
- Iwamoto S, Tanimoto K, Nishio Y, Putra AC, Fuchita H, Ohe M, et al. Association of EPAS1 gene rs4953354 polymorphism with susceptibility to lung adenocarcinoma in female Japanese non-smokers. *J Thorac Oncol*. 2014;9:1709–13.
- Riazalhosseini Y, Lathrop M. Precision medicine from the renal cancer genome. *Nat Rev Nephrol*. 2016;12:655–66.
- Gossage L, Eisen T, Maher ER. VHL, the story of a tumour suppressor gene. *Nat Rev Cancer*. 2015;15:55–64.
- Fuady JH, Gutsche K, Santambrogio S, Varga Z, Hoogewijs D, Wenger RH. Correction: Estrogen-dependent downregulation of hypoxia-inducible factor (HIF)-2 α in invasive breast cancer cells. *Oncotarget*. 2017;8:20516.
- Grampp S, Platt JL, Lauer V, Salama R, Kranz F, Neumann VK, et al. Genetic variation at the 8q24.21 renal cancer susceptibility locus affects HIF binding to a MYC enhancer. *Nat Commun*. 2016;7:13183.
- Schodel J, Bardella C, Sciesielski LK, Brown JM, Pugh CW, Buckle V, et al. Common genetic variants at the 11q13.3 renal cancer susceptibility locus influence binding of HIF to an enhancer of cyclin D1 expression. *Nat Genet*. 2012;44:420–5. S421–422
- Yagai T, Matsui S, Harada K, Inagaki FF, Saijou E, Miura Y, et al. Expression and localization of sterile alpha motif domain containing 5 is associated with cell type and malignancy of biliary tree. *PLoS ONE*. 2017;12:e0175355.
- Hwang SJ, Yang Q, Meigs JB, Pearce EN, Fox CS. A genome-wide association for kidney function and endocrine-related traits in the NHLBI's Framingham Heart Study. *BMC Med Genet*. 2007;8(Suppl 1):S10.
- Iyengar SK, Sedor JR, Freedman BI, Kao WH, Kretzler M, Keller BJ, et al. Genome-wide association and trans-ethnic meta-analysis for advanced diabetic kidney disease: family investigation of nephropathy and diabetes (FIND). *PLoS Genet*. 2015;11:e1005352.

Affiliations

Ruhina S. Laskar¹ · David C. Muller² · Peng Li³ · Mitchell J. Machiela⁴ · Yuanqing Ye⁵ · Valerie Gaborieau¹ · Matthieu Foll¹ · Jonathan N. Hofmann⁴ · Leandro Colli⁴ · Joshua N. Sampson⁴ · Zhaoming Wang⁶ · Delphine Bacq-Daian⁷ · Anne Boland⁷ · Behnoush Abedi-Ardekani¹ · Geoffroy Durand¹ · Florence Le Calvez-Kelm¹ · Nivonirina Robinot¹ · Helene Blanche⁸ · Egor Prokhortchouk^{9,10} · Konstantin G. Skryabin^{9,10} · Laurie Burdett⁴ · Meredith Yeager⁴ · Sanja Radojevic-Skodric¹¹ · Slavisa Savic¹² · Lenka Foretova¹³ · Ivana Holcatova¹⁴ · Vladimir Janout^{15,16} · Dana Mates¹⁷ · Stefan Rascu¹⁸ · Anush Mukeria¹⁹ · David Zaridze¹⁹ · Vladimir Bencko²⁰ · Cezary Cybulski²¹ · Eleonora Fabianova²² · Viorel Jinga¹⁸ · Jolanta Lissowska²³ · Jan Lubinski²¹ · Marie Navratilova¹³ · Peter Rudnai²⁴ · Beata Świątkowska²⁵ · Simone Benhamou^{26,27} · Geraldine Cancel-Tassin^{28,29} · Olivier Cussenot^{28,29} · Antonia Trichopoulou³⁰ · Elio Riboli² · Kim Overvad³¹ · Salvatore Panico³² · Borje Ljungberg³³ · Raviprakash T. Sitaram³³ · Graham G. Giles^{34,35} · Roger L. Milne^{34,35} · Gianluca Severi^{34,36} · Fiona Bruinsma³⁴ · Tony Fletcher³⁷ · Kvetoslava Koppova²² · Susanna C. Larsson³⁸ · Alicja Wolk³⁸ · Rosamonde E. Banks³⁹ · Peter J. Selby³⁹ · Douglas F. Easton^{40,41} · Paul Pharoah^{40,41} · Gabriella Andreotti⁴ · Laura E Beane Freeman⁴ · Stella Koutros⁴ · Demetrius Albanes⁴ · Satu Männistö⁴² · Stephanie Weinstein⁴ · Peter E. Clark⁴³ · Todd L. Edwards⁴³ · Loren Lipworth⁴³ · Hallie Carol⁴⁴ · Matthew L. Freedman⁴⁴ · Mark M. Pomerantz⁴⁴ · Eunyoung Cho⁴⁵ · Peter Kraft⁴⁶ · Mark A. Preston⁴⁷ · Kathryn M. Wilson⁴⁶ · J. Michael Gaziano⁴⁷ · Howard D. Sesso⁴⁶ · Amanda Black⁴ · Neal D. Freedman⁴ · Wen-Yi Huang⁴ · John G. Anema⁴⁸ · Richard J. Kahnoski⁴⁸ · Brian R. Lane^{48,49} · Sabrina L. Noyes⁵⁰ · David Petillo⁵⁰ · Bin Tean Teh⁵⁰ · Ulrike Peters⁵¹ · Emily White⁵¹ · Garnet L. Anderson⁵² · Lisa Johnson⁵² · Juhua Luo⁵³ · Wong-Ho Chow⁵ · Lee E. Moore⁴ · Toni K. Choueiri⁴⁴ · Christopher Wood⁵ · Mattias Johansson¹ · James D. McKay¹ · Kevin M. Brown⁴ · Nathaniel Rothman⁴ · Mark G. Lathrop⁵⁴ · Jean-Francois Deleuze^{7,8} · Xifeng Wu⁵ · Paul Brennan¹ · Stephen J. Chanock⁴ · Mark P. Purdue⁴ · Ghislaine Scelo¹

¹ International Agency for Research on Cancer (IARC), Lyon, France

² Faculty of Medicine, School of Public Health, Imperial College London, London, UK

³ Max Planck Institute for Demographic Research, Rostock, Germany

⁴ Division of Cancer Epidemiology and Genetics, National Cancer Institute, National Institutes of Health, Department Health and Human Services, Bethesda, MD, USA

⁵ Department of Epidemiology, Division of Cancer Prevention and Population Sciences, The University of Texas MD Anderson Cancer Center, Houston, TX, USA

⁶ Department of Computational Biology, St. Jude Children's Research Hospital, Memphis, TN, USA

⁷ Centre National de Recherche en Génomique Humaine, Institut de biologie François Jacob, CEA, Evry, France

⁸ Fondation Jean Dausset-Centre d'Etude du Polymorphisme Humain, Paris, France

⁹ Center 'Bioengineering' of the Russian Academy of Sciences, Moscow, Russian Federation

¹⁰ Kurchatov Scientific Center, Moscow, Russian Federation

¹¹ Institute of Pathology, Medical school of Belgrade, Belgrade, Serbia

¹² Department of Urology, University Hospital "Dr D. Misovic" Clinical Center, Belgrade, Serbia

¹³ Department of Cancer Epidemiology and Genetics, Masaryk

Memorial Cancer Institute, Brno, Czech Republic

¹⁴ 2nd Faculty of Medicine, Institute of Public Health and Preventive Medicine, Charles University, Prague, Czech Republic

¹⁵ Department of Preventive Medicine, Faculty of Medicine, Palacky University, Olomouc, Czech Republic

¹⁶ Faculty of Health Sciences, Palacky University, Olomouc, Czech Republic

¹⁷ National Institute of Public Health, Bucharest, Romania

¹⁸ Carol Davila University of Medicine and Pharmacy, Th. Burghele Hospital, Bucharest, Romania

¹⁹ Russian N.N. Blokhin Cancer Research Centre, Moscow, Russian Federation

²⁰ First Faculty of Medicine, Institute of Hygiene and Epidemiology, Charles University, Prague, Czech Republic

²¹ International Hereditary Cancer Center, Department of Genetics and Pathology, Pomeranian Medical University, Szczecin, Poland

²² Regional Authority of Public Health in BanskaBystrica, BanskaBystrica, Slovakia

²³ The M Sklodowska-Curie Cancer Center and Institute of Oncology, Warsaw, Poland

²⁴ National Public Health Institute, Budapest, Hungary

²⁵ Department of Epidemiology, Nofer Institute of Occupational Medicine, Lodz, Poland

²⁶ INSERM U946, Paris, France

- 27 CNRS UMR8200, Institute Gustave Roussy, Villejuif, France
- 28 Sorbonne Université, GRC no. 5, ONCOTYPE-URO, AP-HP, Tenon Hospital, Paris, France
- 29 CeRePP, Paris, France
- 30 Hellenic Health Foundation, Alexandroupoleos 23, Athens 11527, Greece
- 31 Department of Public Health, Section for Epidemiology, Aarhus University, Aarhus C, Denmark
- 32 Dipartimento di Medicina Clinica e Chirurgia, Federico II University, Naples, Italy
- 33 Department of Surgical and Perioperative Sciences, Urology and Andrology, Umeå University, Umeå, Sweden
- 34 Cancer Epidemiology & Intelligence Division, Cancer Council of Victoria, 615 St Kilda Road, Melbourne, VIC 3004, Australia
- 35 Centre for Epidemiology and Biostatistics, Melbourne School of Population and Global Health, The University of Melbourne, Parkville Victoria 3010, Australia
- 36 Inserm U1018, Center for Research in Epidemiology and Population Health (CESP), Facultés de Médecine, Université Paris-Saclay, Université Paris-Sud, UVSQ, Gustave Roussy, 114 rue Edouard Vaillant, 94805 Villejuif Cedex, France
- 37 London School of Hygiene and Tropical Medicine, University of London, London, UK
- 38 Institute of Environmental Medicine, Karolinska Institutet, Stockholm, Sweden
- 39 Leeds Institute of Cancer and Pathology, University of Leeds, Cancer Research Building, St James's University Hospital, Leeds, UK
- 40 Department of Oncology, University of Cambridge, Cambridge, UK
- 41 Department of Public Health and Primary Care, University of Cambridge, Cambridge, UK
- 42 National Institute for Health and Welfare, Helsinki, Finland
- 43 Vanderbilt-Ingram Cancer Center, Nashville, TN, USA
- 44 Dana-Farber Cancer Institute, Boston, MA, USA
- 45 Brown University, Providence, RI, USA
- 46 Harvard T.H. Chan School of Public Health, Boston, MA, USA
- 47 Brigham and Women's Hospital and VA Boston, Boston, MA, USA
- 48 Division of Urology, Spectrum Health, Grand Rapids, MI, USA
- 49 College of Human Medicine, Michigan State University, Grand Rapids, MI, USA
- 50 Van Andel Research Institute, Center for Cancer Genomics and Quantitative Biology, Grand Rapids, MI, USA
- 51 Cancer Prevention Program, Fred Hutchinson Cancer Research Center, Seattle, WA, USA
- 52 Fred Hutchinson Cancer Research Center, Seattle, WA, USA
- 53 Department of Epidemiology and Biostatistics, School of Public Health Indiana University Bloomington, Bloomington, IN, USA
- 54 McGill University and Genome Quebec Innovation Centre, Montreal, Quebec, Canada