



HAL
open science

Improvements and inter-laboratory implementation and optimization of blood-based single-locus age prediction models using DNA methylation of the ELOVL2 promoter

Imene Garali, Mourad Sahbatou, Antoine Daunay, Laura G. Baudrin, Victor Renault, Yosra Bouyacoub, Jean-François Deleuze, Alexandre How-Kit

► To cite this version:

Imene Garali, Mourad Sahbatou, Antoine Daunay, Laura G. Baudrin, Victor Renault, et al.. Improvements and inter-laboratory implementation and optimization of blood-based single-locus age prediction models using DNA methylation of the ELOVL2 promoter. *Scientific Reports*, 2020, 10, pp.15652. 10.1038/s41598-020-72567-6 . cea-04419429

HAL Id: cea-04419429

<https://cea.hal.science/cea-04419429v1>

Submitted on 26 Jan 2024

HAL is a multi-disciplinary open access archive for the deposit and dissemination of scientific research documents, whether they are published or not. The documents may come from teaching and research institutions in France or abroad, or from public or private research centers.

L'archive ouverte pluridisciplinaire **HAL**, est destinée au dépôt et à la diffusion de documents scientifiques de niveau recherche, publiés ou non, émanant des établissements d'enseignement et de recherche français ou étrangers, des laboratoires publics ou privés.



OPEN

Improvements and inter-laboratory implementation and optimization of blood-based single-locus age prediction models using DNA methylation of the *ELOVL2* promoter

Imene Garali^{1,2,6}, Mourad Sahbatou^{3,6}, Antoine Daunay⁴, Laura G. Baudrin^{2,4}, Victor Renault¹, Yosra Bouyacoub^{2,4}, Jean-François Deleuze^{1,2,3,4,5} & Alexandre How-Kit⁴✉

Several blood-based age prediction models have been developed using less than a dozen to more than a hundred DNA methylation biomarkers. Only one model (Z-P1) based on pyrosequencing has been developed using DNA methylation of a single locus located in the *ELOVL2* promoter, which is considered as one of the best age-prediction biomarker. Although multi-locus models generally present better performances compared to the single-locus model, they require more DNA and present more inter-laboratory variations impacting the predictions. Here we developed 17,018 single-locus age prediction models based on DNA methylation of the *ELOVL2* promoter from pooled data of four different studies (training set of 1,028 individuals aged from 0 and 91 years) using six different statistical approaches and testing every combination of the 7 CpGs, aiming to improve the prediction performances and reduce the effects of inter-laboratory variations. Compared to Z-P1 model, three statistical models with the optimal combinations of CpGs presented improved performances (MAD of 4.41–4.77 in the testing set of 385 individuals) and no age-dependent bias. In an independent testing set of 100 individuals (19–65 years), we showed that the prediction accuracy could be further improved by using different CpG combinations and increasing the number of technical replicates (MAD of 4.17).

Aging is a complex biological process influenced by both genetic and environmental factors and characterized by the progressive decline of several physiological, cellular and molecular functions^{1,2}. Several studies have aimed to identify potential biological and/or molecular biomarkers of aging correlating with chronological age and to use them to develop age prediction models^{3,4}. Four types of DNA-based biomarkers of aging have been identified among the molecular biomarkers: telomere length^{3,5,6}, mitochondria mutations^{6,7}, signal joint T-cell receptor rearrangement excision circles and DNA methylation^{8–11}.

To date, DNA methylation is considered as the most promising molecular biomarker for age prediction and several DNA methylation-based biomarkers of aging correlating with chronological age have therefore been used for the construction of prediction models to estimate the chronological age of individuals, which could be particularly useful in forensic science and for public health concerns¹². In forensics, the ability to precisely determine the chronological age of samples from DNA methylation-based age prediction models could greatly help investigators to identify and find unknown individuals¹³. In other bio-medical applications, the estimated

¹Laboratory for Bioinformatics, Foundation Jean Dausset-CEPH, Paris, France. ²Laboratory of Excellence GenMed, Paris, France. ³Laboratory for Human Genetics, Foundation Jean Dausset-CEPH, Paris, France. ⁴Laboratory for Genomics, Foundation Jean Dausset-CEPH, 75010 Paris, France. ⁵Centre National de Recherche en Génomique Humaine, CEA, Institut François Jacob, Evry, France. ⁶These authors contributed equally: Imene Garali and Mourad Sahbatou. ✉email: alexandre.how-kit@fjd-ceph.org

age from DNA methylation could give an estimation of the biological age⁴ and could also be an indicator of different diseases, risks and health conditions when compared to the chronological age of individuals^{14–17}.

There are numerous DNA methylation biomarkers, i.e. CpG sites, whose methylation status correlates to chronological age similarly in each individual, defined as the ‘epigenetic clock’^{12,18}. These biomarkers have been used to develop several DNA methylation-based age-prediction models that are based either on a high number of CpGs requiring the use of genome-wide epigenotyping array technologies^{19,20} or a lower number of CpGs using locus-specific technologies such as pyrosequencing^{21–23}. *ELOVL fatty acid elongase 2* (*ELOVL2*) has shown to be one of the best DNA methylation biomarkers correlating with the chronological age of individuals among the age-prediction biomarkers and has therefore been included in several age prediction models^{21,24}. The models based upon DNA methylation analysis by pyrosequencing mainly use blood as a source of DNA and present the advantage of requiring only a small number of analyzed CpGs (down to 2 CpGs) and a minimal amount of DNA, which is particularly useful for forensic applications²¹.

To our knowledge only one blood-based age prediction model has been developed from a single locus located in the *ELOVL2* promoter and used multiple linear regression²⁵, while all the other models were developed as multi-locus models from at least two different loci²¹. In a recent study, we evaluated and inter-compared six-age prediction models on a cohort of 100 individuals aged from 19 to 65 years²⁶, including a single-locus model (Zbiac-Piekarska 1²⁵) and five multi-locus models (Bekaert²⁷, Park²⁸, Thong²⁹, Weidner³⁰, and Zbiac-Piekarska 2³¹). The models presenting the best age prediction accuracy were the multi-locus models of Bekaert and Thong (MAD of 4.5–5.2 years and SEE of 6.8–7.2 years) followed by the single-locus model of Zbiac-Piekarska 1 (MAD of 6.8 year and SEE of 8.6 years) while the models presenting the worst age prediction performances (MAD of 7.2–8.7 years and SEE of 9.2–10.3 years) were the three other multi-locus models of Weidner, Park and Zbiac-Piekarska 2²⁶. The latter MAD were much higher than the ones described in their original studies, and we suggested that these differences could be principally attributed to inter-laboratory variations during the implementation of the different pyrosequencing assays²⁶. Thus, the use of several loci and pyrosequencing assays might increase the variability in the predicted age estimates of the models when run in different laboratories.

In the present study, we aimed to develop improved blood-based single-locus age prediction models using *ELOVL2* promoter methylation evaluating every combination of CpGs and different statistical models. We also aimed to propose a simple approach for the implementation and optimization of the age-prediction models across laboratories that could limit the effect of inter-laboratory variations on age predictions. To set up our models, we used freely available DNA methylation data from 1,413 individuals aged between 0 and 91 years taken from four independent previously published studies^{27,28,31,32}, which were divided into a training set (1,028 individuals) and a testing set (385 individuals). Seven CpG sites were considered inside the *ELOVL2* promoter and we used multiple quadratic regression and three machine learning approaches, namely support vector machine, gradient boosting regressor and missMDA, to identify the CpG combinations with the best age prediction accuracy. The performances of our models were also compared to those of the already published single-locus model²⁵ on the same data set and we further evaluated the different approaches on a second independent set of 100 individuals. To further improve the age prediction accuracy, we also evaluated the possibility to estimate the age of the samples using the age averages of the different models and/or of different types of technical replicate experiments that would be easy to setup in other laboratories.

Material and methods

Description of the publicly available data sets and comparison of *ELOVL2* promoter methylation data from four independent studies. As increasing the number of individuals included in training sets improved the age prediction accuracy^{33,34}, we searched for different previously published pyrosequencing datasets of *ELOVL2* promoter DNA methylation. Four datasets comprising 206²⁷, 420³¹, 765²⁸ and 100³² blood samples from individuals aged between 0 and 91 years (Supplementary Table 1) were identified. Park et al.²⁸ and Zbiac-Piekarska et al.³¹ used the same pyrosequencing assays and Bekaert et al.²⁷ and Cho et al.³² used two other slightly different pyrosequencing assays (Supplementary Table 2). The data of the 1,491 samples presented similar DNA methylation values according to the age of individuals with the exception of CpG7 in the Park et al. study²⁸, where 73 samples presented lower DNA methylation values that could be considered as outliers (Supplementary Fig. 1). Thus, the 73 samples from this study as well as five samples from Cho et al. study presenting missing values were excluded from our subsequent analyses. The seven CpG sites all presented strong positive correlation ($r > 0.70$) indicating that they could all be good estimators of the chronological age (Table 1). The 1,413 samples were randomly divided in a training and testing sets including 1,028 and 385 individuals, respectively.

Description of the independent testing set. We used an independent testing set of 100 blood samples from individuals aged between 19 and 65 years, which were used in our previously published study²⁶. We used *ELOVL2* PCR and pyrosequencing assays published from the Zbiac-Piekarska study²⁵, which presented a slight PCR bias in favor of unmethylated DNA with a polynomial fit curve on DNA methylation standards (Supplementary Fig. 2). For each sample, 1 µg of DNA was used for bisulfite treatment followed by three PCR reactions and two subsequent pyrosequencing experiments (PSQ) per PCR (Supplementary Fig. 3A). Correlation analysis of DNA methylation showed that two pyrosequencing replicates from the same PCR reaction showed a better correlation (A1:A2, B1:B2 and C1:C2) than from two different PCR reactions (A1/2:B1/2, A1/2:C1/2 and B1/2:C1/2, Supplementary Fig. 3B), which might influence the age prediction accuracy. Thus, we considered DNA methylation obtained from five types of replicate experiments: one replicate (1 PCR and 1 PSQ per PCR), two replicates (1 PCR and 2 PSQ per PCR or 2 PCR and 1 PSQ per PCR), three replicates (3 PCR and 1 PSQ per PCR) and six replicates (3 PCR and 2 PSQ per PCR).

CpG	Chromosome location (GRCh38)	Bekaert ²⁷ (n = 206)	Zbiac-Piekarska ³¹ (n = 420)	Park ²⁸ (n = 692)	Cho ³² (n = 95)	All (n = 1414)
1	Chr6: 11,044,661	0.898	0.837	0.940	0.860	0.904
2	Chr6: 11,044,655	0.915	0.799	0.920	0.834	0.884
3	Chr6: 11,044,647	0.866	0.803	0.897	0.818	0.852
4	Chr6: 11,044,644	0.912	0.841	0.902	0.872	0.851
5	Chr6: 11,044,642	0.924	0.881	0.906	0.871	0.893
6	Chr6: 11,044,640	0.939	0.877	0.935	0.821	0.911
7	Chr6: 11,044,634	0.876	0.910	0.907	0.887	0.878

Table 1. Correlation between chronological age and DNA methylation for the seven CpGs analyzed located in the *ELOVL2* promoter.

Human blood DNA samples. The study was conducted in accordance with current ethical and legal frameworks. All methods were performed in accordance to the recommendations of the French National Committee of Ethics (Comité Consultatif National d’Ethique pour les Sciences de la Vie et de la Santé). Anonymized blood samples were obtained after informed consent from healthy donors through the French blood bank, EFS (Etablissement Français du Sang, Paris, France—research agreement 15/EFS/012). Peripheral blood samples were derived from 100 healthy French donors aged between 19 and 65 years (Supplementary Table 1). Buffy coats were obtained from blood after 10 min of centrifugation at 1,600g and frozen at -80°C before DNA extraction. DNA extraction was performed on buffy coats using the QIAmp DNA blood mini Kit (Qiagen) on a QIAcube robotic workstation (Qiagen) according to the manufacturer’s instructions. DNA quantification was performed using the Qubit dsDNA HS assay Kit on a Qubit 3 Fluorometer (Thermo Fischer Scientific) according to the manufacturer’s instructions. These DNA samples were already analysed in our previous study²⁶ and were used to perform a new sodium bisulfite treatment in the present study.

Bisulfite conversion and bisulfite treated DNA quantification. Bisulfite conversion of DNA was performed on 1 μg of genomic DNA, using the EpiTect Bisulfite Kit 48 (Qiagen) on a QIAcube robotic workstation (Qiagen) according to the manufacturer’s instructions. Bisulfite-treated DNA was quantified using the quantitative real-time PCR QC1 methylight assay³⁵ and diluted to a final concentration of 20 ng/ μl for DNA methylation analysis by pyrosequencing.

PCR amplification. *ELOVL2* promoter region was amplified as described in²⁶. 20 μL PCR reactions was performed in a Mastercycler Pro S (Eppendorf) with 20 ng of bisulfite-treated DNA as a template. The PCR mix included 1 \times HotStar Taq DNA polymerase buffer, 1.8 mM of additional MgCl_2 , 200 μM of each dNTP, 200 nM of each primer (*ELOVL2_F*: Biotin-AGGGGAGTAGGGTAAGTGAGG and *ELOVL2_R*: AACAAAACCATTTCCCCCTAATAT) and 2 U of HotStar Taq DNA polymerase. Cycling conditions included an initial denaturation step performed for 10 min at 95°C , followed by 50 cycles of 30 s denaturation at 95°C , 30 s annealing at 60°C and 30 s elongation at 72°C . The final step included 5 min elongation at 72°C .

DNA methylation analysis by pyrosequencing. 10 μL of PCR product was purified and prepared for pyrosequencing (sequencing oligo *ELOVL2_Seq*: ACAACCAATAAATATTCCTAAAAC and pyrosequencing analysis sequence: CCR₁TGAAACR₂TTGAAGACCR₃CCR₄CR₅CR₆AAACCR₇AC) according to a previously described protocol^{36,37}. DNA methylation analysis was performed using the PyroMark Gold SQA Q96 Kit (Qiagen) on a PyroMark Q96 MD (Qiagen) and analyzed with PyroMark CpG software (Qiagen).

Statistical analysis and graphical representation. All statistical analysis and graphical representations were performed using R (<https://www.r-project.org/>) or MS Excel (Microsoft). We developed the age prediction models using multiple quadratic regression (MQR), support vector machine (SVM), gradient boosting regressor (GBR) and MissMDA (mMDA) by testing every combination of the 7 CpG sites to improve the estimations of predicted ages. MQR was performed for each of the 7 CpG sites by considering the methylation value for each sample and their squares so that in total 14 variables were used. For the MQR, SVM and GBR approaches, we split our data into a training set and testing set. We fit our model on the training set and made predictions on the testing set. For mMDA, the value to predict (the age of individuals) was considered as a missing value and the data were not split into training and testing data. mMDA used a single dataset with non-missing and missing values corresponding to training set data with non-missing ages and testing set data with missing ages, respectively. mMDA imputed the missing ages with PCA taking into account the similarities between the observations and the relationships between variables. For convenience, data with known age and those with missing values were named “testing set” and “training set” in the rest of our manuscript, respectively. For the support vector machine, we tested Linear (SVM_l), Polynomial (SVM_p) and Radial kernel (SVM_r). For the GBR we used decision trees with a different number of iterations. For each age prediction model, the accuracy of age prediction was evaluated by the mean absolute deviation (MAD) and the root mean square error (RMSE) and the correlation analyses were assessed using the Pearson R correlation coefficient.

Model	Best performance from Training (T)/Testing (V) sets ^a	Number of CpGs	CpG combination	Training set			Testing set		
				R	MAD	RMSE	R	MAD	RMSE
Zbiec-Pierkarska 1	–	2	CpG _{5,7}	0.918	6.885	9.127	0.932	6.397	8.803
MQR	T	9	CpG _{1-2 & 4-6} & CpG _{2,3,4,6-7} ²	0.945	5.133	6.975	0.950	4.773	6.730
	V	8	CpG ₄₋₆ & CpG _{2,3,4,6-7} ²	0.941	5.229	7.184	0.953	4.574	6.559
SVM _r	T	6	CpG _{1-3,5-7}	0.956	4.555	6.229	0.953	4.464	6.544
	V	5	CpG _{2-3,5-7}	0.9546	4.6139	6.3257	0.9534	4.4101	6.4919
SVM _l	T	7	CpG ₁₋₇	0.935	5.575	7.531	0.943	5.221	7.194
	V	5	CpG ₂₋₆	0.930	5.650	7.793	0.945	5.130	7.058
SVM _p	T	7	CpG ₁₋₇	0.799	9.946	13.046	0.830	9.734	12.124
	V	5	CpG ₃₋₇	0.778	10.456	13.582	0.833	9.465	12.098
GBR	T	7	CpG ₁₋₇	0.992	1.993	2.627	0.953	4.549	6.520
	V	5	CpG _{2,4-7}	0.989	2.378	3.121	0.955	4.426	6.398
mMDA	T	3	CpG _{1,5-6}	0.933	5.650	7.625	0.940	5.320	7.357
	V	3	CpG _{2,5-6}	0.929	5.801	7.855	0.943	5.231	7.223

Table 2. Age prediction performances of the different statistical models on the training and testing sets. ^aFor each statistical model, both CpG combinations giving the best age prediction accuracy according to the training (T) and testing (V) sets were included in the table.

Results

Development and evaluation of the performances of *ELOVL2* single-locus age prediction models.

The previously developed *ELOVL2* Zbiec-Piekarska model was based on multiple linear regression using CpGs 5 and 7²⁵. We tested six different statistical approaches for the development of *ELOVL2* single-locus age prediction models. We evaluated multiple quadratic regression (MQR), as some CpGs from *ELOVL2* were shown to present a better correlation with the chronological age using a quadratic rather than a linear regression model²⁷, support-vector machines with radial (SVM_r), linear (SVM_l) and polynomial (SVM_p) functions, the latter function presenting the best age prediction accuracy in a study using DNA methylation of 12 multi-locus CpG sites obtained by NGS that evaluated 17 statistical models³⁸, gradient boosting regressor (GBR) that presented the best age prediction accuracy in a 6 loci age-prediction model using epigenotyping microarray DNA methylation data³⁹ and missMDA (mMDA)^{40,41}, which has never been used to date in an age prediction model. A previous study showed that age-related DNA methylation changes were logarithmic⁴², however, we did not include this function in our regression models, as the relationship between chronological age and DNA methylation of *ELOVL2* was better fitted in our data by a linear or quadratic regression for most CpGs (Supplementary Table 3). We also evaluated the correlation between DNA methylation of the seven CpGs. Our analysis showed that the CpGs were highly correlated with each other (Supplementary Fig. 4), suggesting that multicollinearity could be present in our models. However, we decided not to take this parameter into account and not to correct for it in the development of our models, as we only focused on predictions that should not be affected by multicollinearity⁴³. Thus, we used every combination of 1–7 CpGs sites corresponding to 127 possible combinations for each statistical model to evaluate the age prediction performances, except for the multiple quadratic regression approach where we considered 14 variables corresponding to DNA methylation values and their squared counterparts for the 7 CpG sites, resulting in 16,383 possible combinations. Thus, 17,018 age prediction models were developed in our study.

We calculated the Pearson R coefficient, MAD and RMSE for the 17,018 age prediction models based on the six different statistical approaches, which have been summarized in Supplementary Fig. 5. The results first showed that for each tested model, the combination of CpGs giving the best age prediction accuracy slightly differed according to the data set taken as reference (training or testing set), where fewer CpGs were required to obtain the best age prediction accuracies when using the testing set as the reference set (Table 2). We could also note that the highest difference observed for the age prediction accuracy between the training and validation set was for GBR (MAD of 1.99–2.38 for the training set and MAD of 4.43–5.55 for the testing set) and that mMDA presented the least number of CpGs (three) for the best age prediction accuracy (Fig. 1 and Table 2). Our results also showed that five out of the six tested models (MQR, SVM_r, SVM_l, BGR and mMDA) presented better age prediction performances compared to those obtained with the multiple linear regression model of Zbiec-Pierkarska (Z-P1) in both the training and validation sets (Fig. 1, Table 2 and Supplementary Fig. 6) or the validation set of the original study (MAD of 5.75)²⁵. This suggests that these different statistical models were more accurate for age prediction from *ELOVL2* than multiple linear regression, notably for the samples from the youngest and oldest individuals whose predicted age were under-evaluated in the models of Zbiec-Pierkarska (Fig. 1 and Supplementary Fig. 6). In each model tested, we observed one sample of the testing set with a chronological age of 11 years that systematically presented an over-estimation of its predicted age (> 40 years). In its original study, this sample also presented an age of 50 years predicted from a multiple linear regression model based on 3 CpGs located in *ELOVL2*, *ZNF423* and *CCDC102B*²⁸. These results suggest that this sample could come from an older individual.

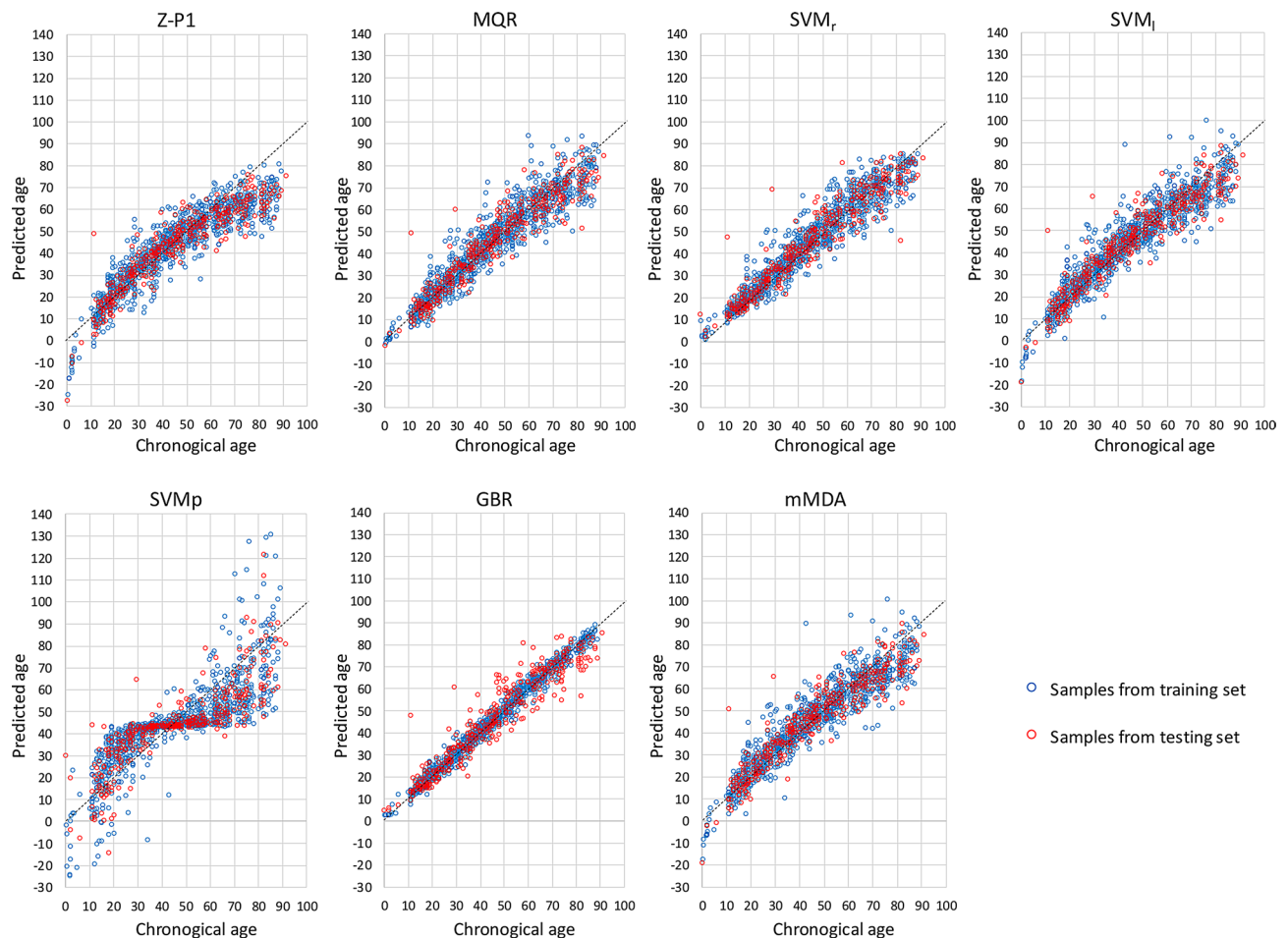


Figure 1. Scatterplots of predicted age and chronological age of the training and testing samples obtained with *ELOVL2* age-prediction models based on six different statistical approaches. The plotted data were obtained from the combination of CpGs giving the best age prediction accuracy on the training set. Z-P1, Zbięc-Piekarska model²⁵ using multiple linear regression; MQR, multiple quadratic regression; SVM, support vector machine with radial kernel (_r), linear (_l) and polynomial (_p) functions; GBR, gradient boosting regressor; mMDA, missMDA. Four out-of-scale values (y -axis) are missing for SVM_p.

Thus, the models giving the best age prediction accuracy on the testing set were in order SVM_r, GBR and MQR (MAD of 4.41–4.77 and RMSE of 6.40–6.73) followed by SVM_l and mMDA (MAD of 5.13–5.32 and RMSE of 7.06–7.36), while SVM_p presented the poorest age prediction accuracy (MAD of 9.47–9.73 and RMSE of 12.10–12.12) and was omitted for all other downstream analyses (Fig. 1, Table 2 and Supplementary Fig. 6). We also evaluated whether averaging the predicted age between the different statistical models used could further improve the age prediction accuracy. Our results showed that multiple model averaging from *ELOVL2* DNA methylation could slightly improve the age prediction accuracy (MAD of 4.36 and RMSE of 6.36 from the averaging of GBR, SVM_r, and MQR predictions, Supplementary Table 4).

Improvement of age-prediction accuracy of the models by increasing the number of technical replicates and inter-laboratory implementation and optimization of the models. We further evaluated the different models and the impact of the increase of technical replicates on age prediction accuracy using an independent testing set of 100 blood samples from individuals aged between 19 and 65 years (see description in the “Material and methods”). We first evaluated the Z-P1, MQR, SVM_r, SVM_l, BGR and mMDA models on the dataset composed of one technical replicate. The results showed that for each statistical model the combinations of CpGs giving the best age prediction accuracy in this independent testing set required a lower number of CpGs (1–4 CpGs) than previously identified in the training and testing sets and relied mainly on CpGs 6 and 7 (Table 3). Thus, the combinations of CpGs previously identified in Table 2 with each statistical model presented lower age prediction performances in this independent dataset than those obtained with these new CpG combinations (Supplementary Table 5). This indicated that some inter-laboratory variations might influence the combinations of CpGs giving the best performance for age prediction. These variations could be observed in our independent testing set for CpGs 1–3, whose average DNA methylation was slightly higher than

Model	Number of CpGs	CpGs	Estimators	Training set (n = 1,028)	Testing set 1 (n = 385)	Independent testing set 2 (n = 100)				
						1 PCR and 1 PSQ/PCR (1 replicate)	1 PCR and 2 PSQ/PCR (2 replicates)	2 PCR and 1 PSQ/PCR (2 replicates)	3 PCR and 1 PSQ/PCR (3 replicates)	3 PCR and 2 PSQ/PCR (6 replicates)
Zbiec-Pierkarska 1	2	CpG _{5,7}	R	0.918	0.932	0.880	0.893	0.902	0.909	0.914
			MAD	6.885	6.397	5.445	5.319	5.147	5.050	5.011
			RMSE	9.127	8.803	6.870	6.624	6.440	6.290	6.201
MQR	4	CpG ₆ & CpG _{4,6,7,2,2}	R	0.934	0.945	0.904	0.911	0.919	0.924	0.927
			MAD	5.521	4.910	4.786	4.619	4.425	4.266	4.232
			RMSE	7.574	7.057	6.225	5.996	5.765	5.598	5.504
SVM _r	2	CpG _{6,7}	R	0.947	0.948	0.902	0.906	0.917	0.923	0.925
			MAD	5.051	4.701	4.784	4.668	4.388	4.211	4.174
			RMSE	6.843	6.833	6.287	6.140	5.771	5.581	5.515
SVM _l	2	CpG _{6,7}	R	0.905	0.927	0.902	0.905	0.917	0.922	0.923
			MAD	6.246	6.036	5.536	5.484	5.289	5.211	5.197
			RMSE	9.078	8.095	6.874	6.796	6.525	6.404	6.375
BGR	2	CpG _{6,7}	R	0.976	0.947	0.900	0.904	0.913	0.919	0.920
			MAD	3.471	4.772	4.892	4.842	4.577	4.436	4.469
			RMSE	4.660	6.931	6.397	6.314	5.973	5.803	5.741
mMDA	1	CpG ₆	R	0.906	0.927	0.902	0.905	0.917	0.922	0.923
			MAD	6.291	6.079	5.926	5.875	5.736	5.673	5.598
			RMSE	9.008	8.104	7.234	7.158	6.932	6.826	6.772

Table 3. Age prediction performances of the different statistical models on an independent validation set.

that of the initial training and testing sets (Supplementary Fig. 7) and that could thereby explain their absence in the CpG combinations giving the best prediction accuracy (Table 3).

The statistical models presenting the best age prediction accuracy in this independent testing set were MQR, SVM_r and BGR (MAD of 4.78–4.89 and RMSE of 6.23–6.40) followed by Z-P1, SVM_l, and mMDA, which presented slightly lower performance (MAD of 5.45–5.93 and RMSE of 6.87–7.23, Fig. 2, Table 3 and Supplementary Fig. 8). Regarding the effect of technical replicates, our results showed that the performances of each tested model were improved as the number of technical replicates increased, where duplicating PCR reactions improved age prediction more than duplicating pyrosequencing experiments from a single PCR (Fig. 2, Table 3 and Supplementary Fig. 8). The best performances were achieved with MQR and SVM_r from six replicates experiments (MAD of 4.17–4.23 and RMSE of 5.50–5.52, Table 3). As previously shown, averaging the predicted age between the different statistical models could further improve the age prediction accuracy (MAD of 4.156 and RMSE of 5.461 using the averaging of SVM_r and MQR predictions and the six-replicate dataset, Supplementary Table 6).

Discussion

Several multi-locus age prediction models based on DNA methylation of blood or other body fluids relied on less than a dozen markers using mainly pyrosequencing to several tens or hundreds of loci using epigenotyping arrays^{12,21,26}. To our knowledge, only a single-locus model based on two CpGs of the *ELOVL2* promoter and multiple linear regression has been proposed to date, in which the MAD of age predictions were of 5.03 and 5.75 in the training (303 samples) and testing (124 samples) sets respectively²⁵. Despite multi-locus age prediction models generally presented better age prediction accuracy than the *ELOVL2* single-locus model in their original studies, our recent study evaluating six blood based age prediction models using DNA methylation analysis by pyrosequencing showed that the performances of multi-locus models could sometimes be poorer in independent validation studies²⁶. This could be attributed to inter-laboratory variations and discrepancies resulting from slight experimental differences accumulated during the different stages of sample processing, which could potentially increase as the number of PCR and pyrosequencing assays increases²⁶. In a more recent study Pfeifer et al. evaluated two published multi-locus age prediction models using an independent validation set⁴⁴. Their results presented worse age prediction performances (MAD of 9.84 instead of 3.75 in the original study²⁷) that they also attributed to inter-laboratory variations caused by some differences in experimental conditions (reagents used, PCR and pyrosequencing conditions and devices...)⁴⁴.

The objective of the present study was thereby to improve the age prediction performances of single-locus blood-based age prediction models using *ELOVL2* promoter DNA methylation and also to propose an approach for the implementation and optimization of the best models in different laboratories in order to deal with the effects of inter-laboratory variations that could decrease the age-prediction performances^{26,44}. Using three different parameters: (1) the choice of the statistical model, (2) the combination of CpG sites and (3) technical replications, we aimed to improve the age prediction that would avoid the need to increase the number of analyzed loci and to use multi-locus models, thus greatly simplifying the experimental procedures, the costs and also the amount of DNA required. Combining DNA methylation data of the *ELOVL2* promoter from four independent studies allowed us to take into account some inter-laboratory variations in the developed models

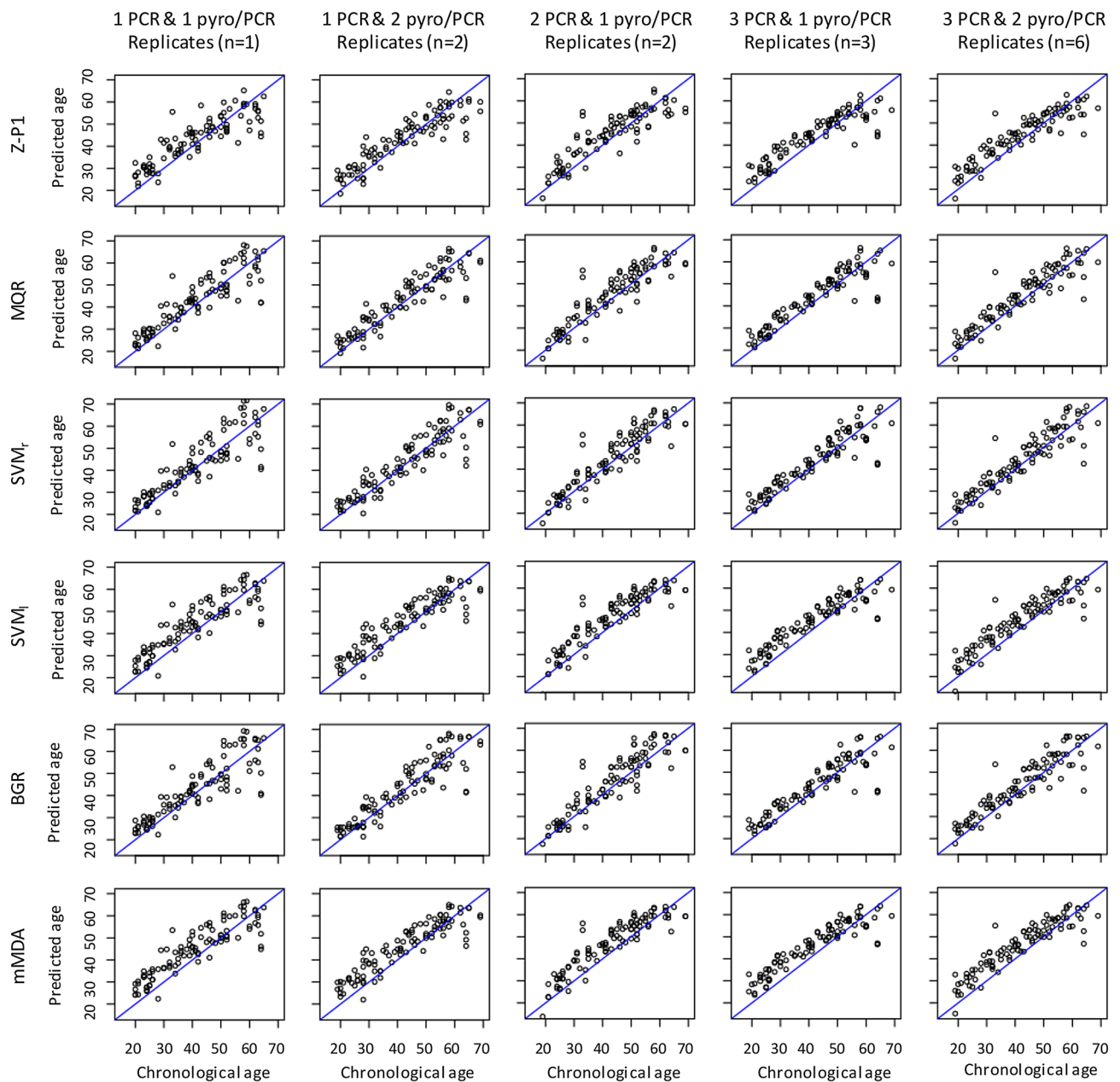


Figure 2. Scatterplots of predicted age and chronological age of the independent testing set of 100 blood samples from individuals of 19–65 years obtained with *ELOVL2* age-prediction models based on six different statistical approaches. The plotted data were obtained from the combination of CpGs giving the best age prediction accuracy on this independent testing set. Due to replicate measures per sample and to allow comparison between conditions, only one age prediction value per sample was randomly picked for representation. Z-P1, Zbiac-Piekarska model²⁵ using multiple linear regression; MQR, multiple quadratic regression; SVM, support vector machine with radial kernel (r) and linear (l) functions; BGR, gradient boosting regressor; mMDA, missMDA.

while increasing the training set sample size, which should result in an improved precision of age estimates^{33,34}. The use of different PCR and pyrosequencing assays in these different studies could partially explain the observed inter-laboratory variations in the DNA methylation data. Our results showed that for the best combinations of CpGs obtained with the six tested statistical models (MQR, SVM r , SVM l , SVM lr , BGR and mMDA), five presented better age prediction accuracy compared to the Zbiac-Piekarska model in our training and testing sets (Fig. 1 and Table 2), while only three statistical models (MQR, SVM r and BGR) outperformed the same model when compared to the performances of its original study²⁵. We also showed that averaging the predictions of these three models could be a way to improve the age prediction accuracy slightly (Supplementary Table 4). It should be highlighted that 127 (multiple) linear regression models (from every combination of the 7 CpGs) were also tested in our study in MQR and their age prediction performances were among the worst 30% (not shown),

confirming that the relationship between age and *ELOVL2* DNA methylation is better modeled using multiple quadratic regression²⁷. Moreover, Zbiac-Piekarska model under-evaluated the age of the youngest and oldest individuals in our study and this tendency was already visible in the original study²⁵. Of note, the SVM_p showed the poorest age prediction performances in our study although it had been identified as the best approach for age estimations among 17 statistical models including also SVM_r in a recent study using 12 different loci³⁸. This suggests that the selected markers and/or the number of markers used could greatly influence the age prediction accuracy of the statistical model.

In an independent test set of 100 blood samples, we evaluated MQR, SVM_p, SVM_r, BGR and mMDA on their age prediction accuracy as well as the effect of technical replicates of PCR and pyrosequencing experiments generated in our laboratory. Our results showed that the best age prediction accuracy was always obtained with different combinations of fewer CpG sites than previously identified (Tables 2 and 3). This indicates that the inter-laboratory variations occurring during the implementation of pyrosequencing assays due to some differences in the experimental conditions might influence the age prediction accuracy, as was also shown in the multi-locus models²⁶. As a consequence, the best combination of CpGs could also vary across laboratories and should therefore be systematically evaluated to obtain the best age prediction performances. We have also evaluated the effect of replicate PCR and/or pyrosequencing experiments on age prediction accuracy in this independent validation cohort, which has been rarely performed in other studies. We showed that increasing PCR and pyrosequencing replicates could be a simple way to improve the age prediction accuracy in each tested model, with a stronger effect of pyrosequencing replicates from independent PCR reactions than from the same PCR reaction (Fig. 2, Table 3 and Supplementary Fig. 7). The best age prediction performance obtained with SVM_r (MAD of 4.17, Table 3) was even better than the performances from the best multi-locus model of Bekaert identified in our previous study that compared five multilocus-models (MAD of 4.5²⁶).

Due to the constraints inherent in our study, we used different combinations of CpGs of the *ELOVL2* promoter that are very close in the DNA sequence. We showed that their DNA methylations were highly correlated, which could have introduced multicollinearity in our developed models. For example, multicollinearity could be detected in the three MQR equations presented in our study for variables with variance inflation factors (VIF) higher than 10, thus inducing less confident estimations of their coefficients in the equations (Supplementary Table 7). However, although multicollinearity is an issue for explanatory modeling, it is not the case when we are only interested in predictions as in the context of our study⁴³. Nevertheless, in order to handle collinear variables in the models, ridge regression (RR), principal component regression (PCR) or partial least squares regression (PLS) could have been performed. A principal components analysis describing variance in our dataset could also be first performed and used to reduce the number of correlated variables (Supplementary Fig. 9).

Our study showed that the use of a single-locus blood-based age prediction model could achieve improved performances equaling multi-locus models. For optimal inter-laboratory implementation and age prediction performances of *ELOVL2* single-locus age prediction models, we recommend the use of our experimental conditions for *ELOVL2* PCR and pyrosequencing assays combined with one of the three best statistical models identified in our study: SVM_p, MQR or GBR. The evaluation of the selected statistical models trained on our provided training dataset using every combination of the 7 CpG sites (14 variables for MQR) should systematically be performed on an independent set of testing samples (obtained from individuals with as large an age difference as possible). It would allow the identification of the best CpG combination that should be used in the different laboratories to obtain the best estimates of predicted age. Two or three measures of *ELOVL2* DNA methylation from independent PCR experiments should then be used to further improve the age prediction accuracy of the samples of interest. Another approach has also been proposed for inter-laboratory adaptation of multi-locus DNA methylation-based age prediction models in order to manage and deal with inter-laboratory variations that decreased the age prediction performances⁴⁴. It required retraining the models using an independent training set, in addition to an independent validation set⁴⁴. Our proposed approach could be simpler, faster and less expensive as it only requires an independent validation set.

In conclusion, we showed that the performances of a single-locus age-prediction model based on *ELOVL2* promoter methylation could be improved by modifying the statistical model used, the combination of CpGs chosen and also the number of technical replicates. With these improvements, the *ELOVL2* single-locus model could therefore match the performances of multi-locus models while greatly simplifying the experimental procedures, the costs and also the amount of DNA needed due to the need of only one locus, which could be particularly useful for forensic applications. The development of single-locus age prediction models based on *ELOVL2* promoter methylation was also particularly interesting as DNA methylation of this age-prediction biomarker, contrary to other DNA methylation-based age-prediction biomarkers, has proven to be correlated with age in most types of tissues⁴⁵ and could thereby potentially be used on different types of samples without requiring many changes. Our model could also potentially be used to study the modification of the epigenetic clock in individuals with different health conditions, as shown in numerous studies using high-throughput multi-locus age prediction models relying on epigenotyping microarray data¹² and low-throughput multi-locus age prediction models based on pyrosequencing^{17,46}. Further evaluations of our single-locus age prediction models based on *ELOVL2* promoter methylation should be performed on samples from different types of tissues as well as from individuals with different health conditions and/or diseases to define the applicability of these models to such samples.

Data availability

The training set was provided as Supplementary Datasets 1 (for MQR) and 2 (for SVM_r and GBR) and the testing set was provided as Supplementary Datasets 3 (for MQR) and 4 (for SVM_r and GBR). A customizable list of variables (CpGs) is also required for MQR and is provided as Supplementary Dataset 5.

Code availability

The codes were provided for the three best statistical models identified in our study, i.e. MQR, SVMr and GBR (Supplementary Information 2) and allowed users to identify the CpG combinations giving the best age prediction performances with their own testing set.

Received: 7 February 2020; Accepted: 2 September 2020

Published online: 24 September 2020

References

- Lopez-Otin, C., Blasco, M. A., Partridge, L., Serrano, M. & Kroemer, G. The hallmarks of aging. *Cell* **153**, 1194–1217. <https://doi.org/10.1016/j.cell.2013.05.039> (2013).
- Rodriguez-Rodero, S. *et al.* Aging genetics and aging. *Aging Disease* **2**, 186–195 (2011).
- Zapico, S. C. & Ubelaker, D. H. Applications of physiological bases of ageing to forensic sciences. Estimation of age-at-death. *Ageing Res. Rev.* **12**, 605–617. <https://doi.org/10.1016/j.arr.2013.02.002> (2013).
- Jylhava, J., Pedersen, N. L. & Hagg, S. Biological age predictors. *EBioMedicine* **21**, 29–36. <https://doi.org/10.1016/j.ebiom.2017.03.046> (2017).
- Srettabunjong, S., Satitsri, S., Thongnoppakhun, W. & Tirawanchai, N. The study on telomere length for age estimation in a Thai population. *Am. J. Forensic Med. Pathol.* **35**, 148–153. <https://doi.org/10.1097/PAF.0000000000000095> (2014).
- Saeed, M., Berlin, R. M. & Cruz, T. D. Exploring the utility of genetic markers for predicting biological age. *Leg. Med.* **14**, 279–285. <https://doi.org/10.1016/j.legalmed.2012.05.003> (2012).
- Meissner, C., von Wurmb, N., Schimansky, B. & Oehmichen, M. Estimation of age at death based on quantitation of the 4977-bp deletion of human mitochondrial DNA in skeletal muscle. *Forensic Sci. Int.* **105**, 115–124 (1999).
- Zubakov, D. *et al.* Estimating human age from T-cell DNA rearrangements. *Curr. Biol. CB* **20**, R970–971. <https://doi.org/10.1016/j.cub.2010.10.022> (2010).
- Ou, X. L. *et al.* Predicting human age with bloodstains by sjTREC quantification. *PLoS ONE* **7**, e42412. <https://doi.org/10.1371/journal.pone.0042412> (2012).
- Ibrahim, S. F., Gaballah, I. F. & Rashed, L. A. Age estimation in living Egyptians using signal joint T-cell receptor excision circle rearrangement. *J. Forensic Sci.* **61**, 1107–1111. <https://doi.org/10.1111/1556-4029.12988> (2016).
- Cho, S. *et al.* Age estimation via quantification of signal-joint T cell receptor excision circles in Koreans. *Leg. Med.* **16**, 135–138. <https://doi.org/10.1016/j.legalmed.2014.01.009> (2014).
- Horvath, S. & Raj, K. DNA methylation-based biomarkers and the epigenetic clock theory of ageing. *Nat. Rev. Genet.* **19**, 371–384. <https://doi.org/10.1038/s41576-018-0004-3> (2018).
- Parson, W. Age estimation with DNA: From forensic DNA fingerprinting to forensic (Epi)genomics: A mini-review. *Gerontology* **64**, 326–332. <https://doi.org/10.1159/000486239> (2018).
- Luo, A. *et al.* Epigenetic aging is accelerated in alcohol use disorder and regulated by genetic variation in APOL2. *Neuropsychopharmacol. Off. Publ. Am. Coll. Neuropsychopharmacol.* <https://doi.org/10.1038/s41386-019-0500-y> (2019).
- Ambatipudi, S. *et al.* DNA methylome analysis identifies accelerated epigenetic ageing associated with postmenopausal breast cancer susceptibility. *Eur. J. Cancer* **75**, 299–307. <https://doi.org/10.1016/j.ejca.2017.01.014> (2017).
- Marioni, R. E. *et al.* DNA methylation age of blood predicts all-cause mortality in later life. *Genome Biol.* **16**, 25. <https://doi.org/10.1186/s13059-015-0584-6> (2015).
- Spolnicka, M. *et al.* Modified aging of elite athletes revealed by analysis of epigenetic age markers. *Aging (Milano)*. **10**, 241–252. <https://doi.org/10.18632/aging.101385> (2018).
- Jones, M. J., Goodman, S. J. & Kobor, M. S. DNA methylation and healthy human aging. *Aging Cell* <https://doi.org/10.1111/acel.12349> (2015).
- Hannum, G. *et al.* Genome-wide methylation profiles reveal quantitative views of human aging rates. *Mol. Cell* **49**, 359–367. <https://doi.org/10.1016/j.molcel.2012.10.016> (2013).
- Horvath, S. DNA methylation age of human tissues and cell types. *Genome Biol.* **14**, R115. <https://doi.org/10.1186/gb-2013-14-10-r115> (2013).
- Jung, S. E., Shin, K. J. & Lee, H. Y. DNA methylation-based age prediction from various tissues and body fluids. *BMB Rep.* **50**, 546–553 (2017).
- Vidaki, A. & Kayser, M. Recent progress, methods and perspectives in forensic epigenetics. *Forensic Sci. Int. Genet.* **37**, 180–195. <https://doi.org/10.1016/j.fsigen.2018.08.008> (2018).
- Zubakov, D. *et al.* Human age estimation from blood using mRNA, DNA methylation, DNA rearrangement, and telomere length. *Forensic Sci. Int. Genet.* **24**, 33–43. <https://doi.org/10.1016/j.fsigen.2016.05.014> (2016).
- Garagnani, P. *et al.* Methylation of ELOVL2 gene as a new epigenetic marker of age. *Aging Cell* **11**, 1132–1134. <https://doi.org/10.1111/acel.12005> (2012).
- Zbiac-Piekarska, R. *et al.* Examination of DNA methylation status of the ELOVL2 marker may be useful for human age prediction in forensic science. *Forensic Sci. Int. Genet.* **14**, 161–167. <https://doi.org/10.1016/j.fsigen.2014.10.002> (2015).
- Daunay, A., Baudrin, L. G., Deleuze, J. F. & How-Kit, A. Evaluation of six blood-based age prediction models using DNA methylation analysis by pyrosequencing. *Sci. Rep.* **9**, 8862. <https://doi.org/10.1038/s41598-019-45197-w> (2019).
- Bekaert, B., Kamalandua, A., Zapico, S. C., Van de Voorde, W. & Decorte, R. Improved age determination of blood and teeth samples using a selected set of DNA methylation markers. *Epigenetics* **10**, 922–930. <https://doi.org/10.1080/15592294.2015.1080413> (2015).
- Park, J. L. *et al.* Identification and evaluation of age-correlated DNA methylation markers for forensic use. *Forensic Sci. Int. Genet.* **23**, 64–70. <https://doi.org/10.1016/j.fsigen.2016.03.005> (2016).
- Thong, Z., Chan, X. L. S., Tan, J. Y. Y., Loo, E. S. & Syn, C. K. C. Evaluation of DNA methylation-based age prediction on blood. *Forensic Sci. Int. Genet. Suppl. Series* **6**, e249–e251. <https://doi.org/10.1016/j.fsigs.2017.09.095> (2017).
- Weidner, C. I. *et al.* Aging of blood can be tracked by DNA methylation changes at just three CpG sites. *Genome Biol.* **15**, R24. <https://doi.org/10.1186/gb-2014-15-2-r24> (2014).
- Zbiac-Piekarska, R. *et al.* Development of a forensically useful age prediction method based on DNA methylation analysis. *Forensic Sci. Int. Genet.* **17**, 173–179. <https://doi.org/10.1016/j.fsigen.2015.05.001> (2015).
- Cho, S. *et al.* Independent validation of DNA-based approaches for age prediction in blood. *Forensic Sci. Int. Genet.* **29**, 250–256. <https://doi.org/10.1016/j.fsigen.2017.04.020> (2017).
- Zhang, Q. *et al.* Improved precision of epigenetic clock estimates across tissues and its implication for biological ageing. *Genome Med.* **11**, 54. <https://doi.org/10.1186/s13073-019-0667-1> (2019).
- Bell, C. G. *et al.* DNA methylation aging clocks: challenges and recommendations. *Genome Biol.* **20**, 249. <https://doi.org/10.1186/s13059-019-1824-y> (2019).
- Campan, M., Weisenberger, D. J., Trinh, B. & Laird, P. W. MethyLight. *Methods Mol. Biol.* **507**, 325–337. https://doi.org/10.1007/978-1-59745-522-0_23 (2009).

36. How-Kit, A. *et al.* Accurate CpG and non-CpG cytosine methylation analysis by high-throughput locus-specific pyrosequencing in plants. *Plant Mol. Biol.* **88**, 471–485. <https://doi.org/10.1007/s11103-015-0336-8> (2015).
37. How-Kit, A. & Tost, J. Pyrosequencing(R)-based identification of low-frequency mutations enriched through enhanced-ice-COLD-PCR. *Methods Mol. Biol.* **1315**, 83–101. https://doi.org/10.1007/978-1-4939-2715-9_7 (2015).
38. Aliferi, A. *et al.* DNA methylation-based age prediction using massively parallel sequencing data and multiple machine learning models. *Forensic Sci. Int. Genet.* **37**, 215–226. <https://doi.org/10.1016/j.fsigen.2018.09.003> (2018).
39. Li, X., Li, W. & Xu, Y. Human age prediction based on DNA methylation using a gradient boosting regressor. *Genes*. <https://doi.org/10.3390/genes9090424> (2018).
40. Josse, J., Pagès, J. & Husson, F. Multiple imputation in principal component analysis. *Adv. Data Anal. Classif.* **5**, 231–246. <https://doi.org/10.1007/s11634-011-0086-7> (2011).
41. Josse, J. & Husson, F. missMDA: A package for handling missing values in multivariate data analysis. *J. Stat. Softw.* <https://doi.org/10.18637/jss.v070.i01> (2016).
42. Snir, S., Farrell, C. & Pellegrini, M. Human epigenetic ageing is logarithmic with time across the entire lifespan. *Epigenetics* **14**, 912–926. <https://doi.org/10.1080/15592294.2019.1623634> (2019).
43. Shmueli, G. To explain or to predict?. *Stat. Sci.* **25**, 289–310. <https://doi.org/10.1214/10-STS330> (2010).
44. Pfeifer, M., Bajanowski, T., Helmus, J. & Poetsch, M. Inter-laboratory adaption of age estimation models by DNA methylation analysis-problems and solutions. *Int. J. Legal Med.* **134**, 953–961. <https://doi.org/10.1007/s00414-020-02263-7> (2020).
45. Sliker, R. C., Relton, C. L., Gaunt, T. R., Slagboom, P. E. & Heijmans, B. T. Age-related DNA methylation changes are tissue-specific with ELOVL2 promoter methylation as exception. *Epigenet. Chromatin* **11**, 25. <https://doi.org/10.1186/s13072-018-0191-3> (2018).
46. Spolnicka, M. *et al.* DNA methylation signature in blood does not predict calendar age in patients with chronic lymphocytic leukemia but may alert to the presence of disease. *Forensic Sci. Int. Genet.* **34**, e15–e17. <https://doi.org/10.1016/j.fsigen.2018.02.004> (2018).

Acknowledgements

We wish to thank Steven McGinn (CNRGH) for his careful editing of the manuscript and improvement of the English and Prof. Arthur Tenenhaus and Dr Philippe Beaucamps for their helpful advises. I.G., L.G.B. and Y.B. received support from the GENMED Laboratory of Excellence on Medical Genomics [ANR-10-LABX-0013 to LB].

Author contributions

All authors contributed significantly to this work. A.H.-K. conceived and supervised the study. A.D., L.G.B. and Y.B. performed the experiments. I.G. and M.S. wrote all the scripts and developed the models. I.G., M.S., A.D. and A.H.-K. analyzed the data and made the Figures and Tables. A.H.-K. drafted the first version of the manuscript. I.G., M.S., A.D., L.G.B., V.R., Y.B., J.-F.D. and A.H.-K. read, improved and approved the final version of the submitted manuscript.

Competing interests

The authors declare no competing interests.

Additional information

Supplementary information is available for this paper at <https://doi.org/10.1038/s41598-020-72567-6>.

Correspondence and requests for materials should be addressed to A.H.-K.

Reprints and permissions information is available at www.nature.com/reprints.

Publisher's note Springer Nature remains neutral with regard to jurisdictional claims in published maps and institutional affiliations.



Open Access This article is licensed under a Creative Commons Attribution 4.0 International License, which permits use, sharing, adaptation, distribution and reproduction in any medium or format, as long as you give appropriate credit to the original author(s) and the source, provide a link to the Creative Commons licence, and indicate if changes were made. The images or other third party material in this article are included in the article's Creative Commons licence, unless indicated otherwise in a credit line to the material. If material is not included in the article's Creative Commons licence and your intended use is not permitted by statutory regulation or exceeds the permitted use, you will need to obtain permission directly from the copyright holder. To view a copy of this licence, visit <http://creativecommons.org/licenses/by/4.0/>.

© The Author(s) 2020