



**HAL**  
open science

# Propagation of elastic waves un buried waveguides: modelling of the forward problem and imaging with sampling methods

Jean-François Fritsch, Laurent Bourgeois, Christophe Hazard, Vahan  
Baronian, Arnaud Recoquillay

## ► To cite this version:

Jean-François Fritsch, Laurent Bourgeois, Christophe Hazard, Vahan Baronian, Arnaud Recoquillay. Propagation of elastic waves un buried waveguides: modelling of the forward problem and imaging with sampling methods. WINE - Wavecomplexity International Networking Event, Jul 2021, Nice (online conference), France. , 2021. cea-04131477

**HAL Id: cea-04131477**

**<https://cea.hal.science/cea-04131477v1>**

Submitted on 16 Jun 2023

**HAL** is a multi-disciplinary open access archive for the deposit and dissemination of scientific research documents, whether they are published or not. The documents may come from teaching and research institutions in France or abroad, or from public or private research centers.

L'archive ouverte pluridisciplinaire **HAL**, est destinée au dépôt et à la diffusion de documents scientifiques de niveau recherche, publiés ou non, émanant des établissements d'enseignement et de recherche français ou étrangers, des laboratoires publics ou privés.

## (1) Context

- Control of elongated structures (pipes, cables, plates...) partially or totally buried into an acoustic or elastic medium (water, cement, ...).
- Different techniques exist to identify defects in closed waveguides. Among them, a high-frequency **sampling-type method** called LSM gives good results.
- Few works on the modeling of wave propagation in these media and on the identification of defects in these open structures.



Left: suspended bridge (newcivilengineer.com), middle: underwater fiber-optics (acacia-inc.com), right: riser (ocean-energyresources.com).

### Difficulties:

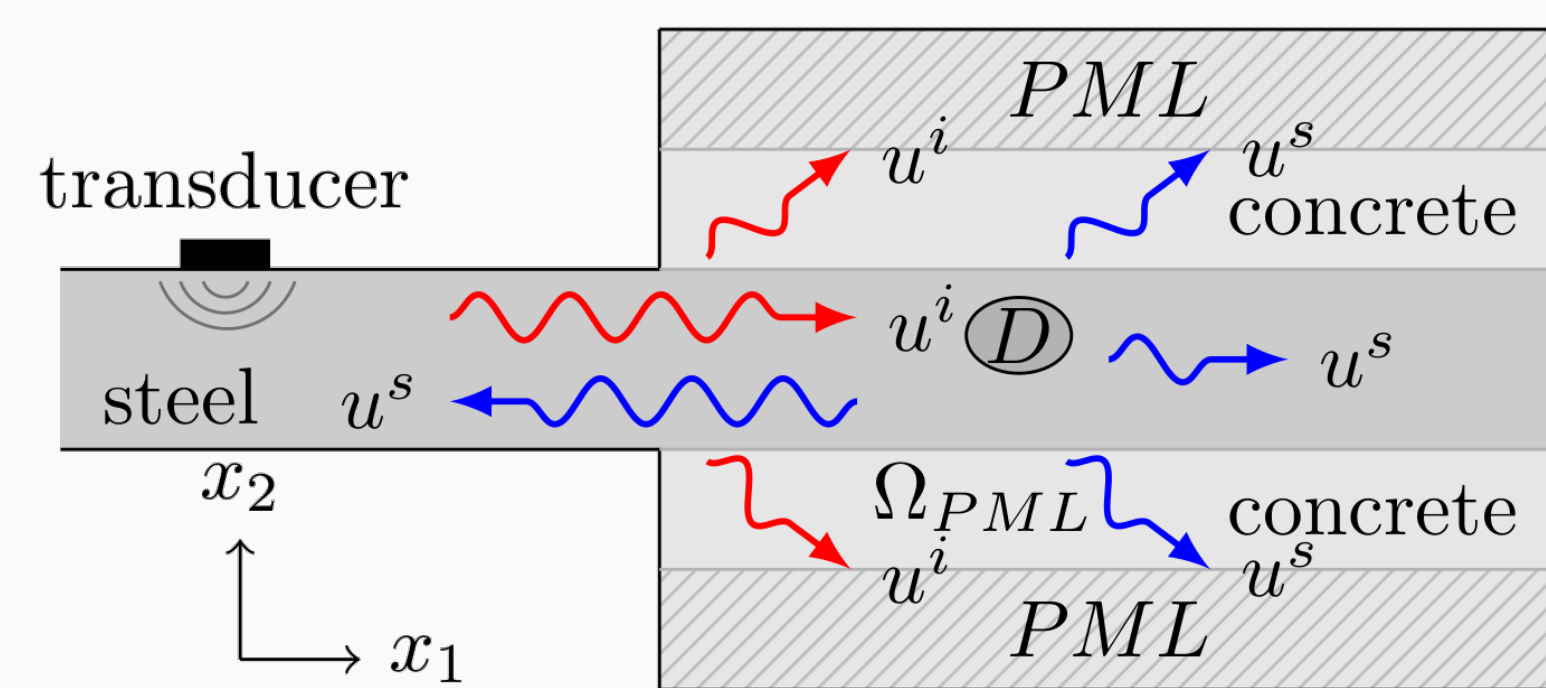
- only one side of the zone to control is accessible,
- waves propagating in the structure **leak** partially in the surrounding medium, the attenuation in the axial direction is more or less important depending on the mode,
- from a mathematical point of view: study of **non self-adjoint** problems.

## (2) SH waves in a 2D partially buried waveguide

We start by studying SH (Shear Horizontal) waves: acoustic case.

Find  $u^s \in H_{loc}^1(\Omega_{PML} \setminus \bar{D})$  such that :

$$\begin{cases} \alpha \partial_{x_2} (\alpha \mu \partial_{x_2} u^s) + \partial_{x_1}^2 u^s + k^2 u^s = 0 & \text{in } \Omega_{PML} \setminus \bar{D} \\ u^s = -u^i & \text{on } \partial D \\ \partial_n u^s = 0 & \text{on } \partial \Omega_{PML} \setminus \partial D \\ u^s \text{ is outgoing.} \end{cases}$$



Numerical testing configuration.

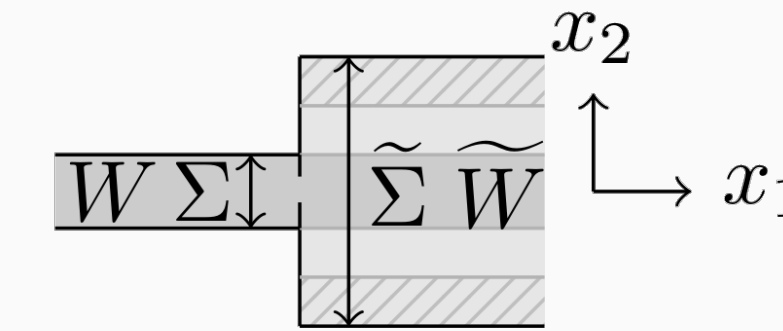
### Difficulties:

- need to truncate the domain in the transverse direction for computation  $\Rightarrow$  use of PML (model the physical medium with absorption)
- $\oplus$  easy to implement, extension to elasticity  $\ominus$  choice of its parameters not easy,
- need to truncate the domain in the axial direction.

## (3) Modal analysis of both half-guides

**Mode** = solution of the homogeneous Helmholtz problem with separate variable:

$$g_n^\pm(x_1, x_2) = \varphi_n(x_2) e^{\pm i \beta_n x_1}$$



### Left closed half-guide

No interaction with the outside medium.

$$\begin{cases} \Delta u + k^2 u = 0 & \text{in } W \\ \partial_n u = 0 & \text{on } \partial W \end{cases}$$

- known analytically,
- functions  $(\varphi_n)_n$  form a complete basis of  $L^2(\Sigma)$ ,
- orthogonality relationship.

### Right open half-guide

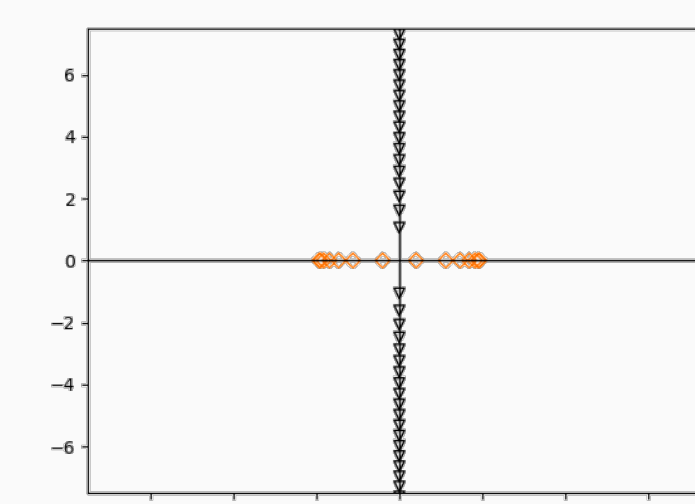
Interaction with the outside medium.

$$\begin{cases} \alpha \mu^{-1} \partial_{x_2} (\alpha \mu \partial_{x_2} u) + \partial_{x_1}^2 u + k^2 u = 0 & \text{in } W \\ \partial_n u = 0 & \text{on } \partial W \end{cases}$$

- not known analytically,
- functions  $(\varphi_n)_n$  form a complete basis of  $L^2(\Sigma)$  with the Riesz property?
- bi-orthogonality relationship.

## (4) $\pm \beta_n$ in the complex plane

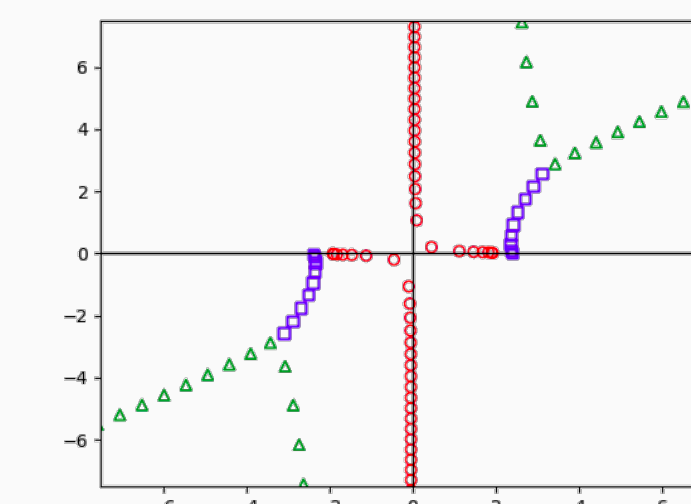
### Left closed half-guide



Simple spectrum:

- $\diamond$ : propagating modes
  - oscillating without loss along the axial direction
  - finite number,
- $\nabla$ : evanescent modes
  - exponentially decreasing in the axial direction
  - infinite number.

### Right open half-guide



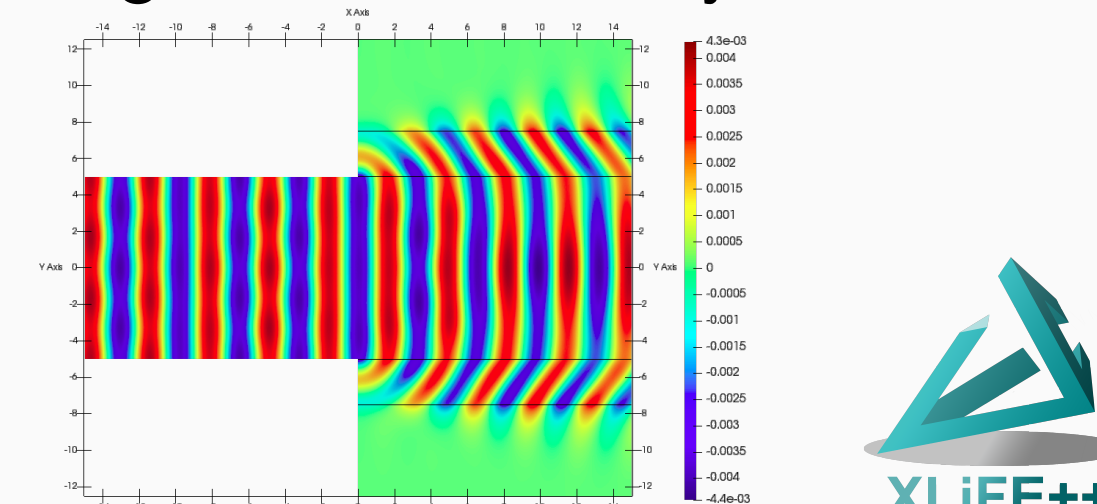
Complex spectrum  $\Rightarrow$  need of filtering:

- $\circ$ : leaky modes (physical objects)
  - oscillating with loss along the axial direction, exponentially decreasing in the transverse direction (in the PML)
  - infinite number,
- $\square$ : PML modes (not physical, in PML),
- $\triangle$ : polluting modes (due to discretization).

## (5) Direct problem

**Theoretical work:** well-posedness of scattering problems in the junction with PML and asymptotic behaviour of scattered waves using Kondratiev theory.

**Numerical work:** truncation of the computational domain in the axial direction with Dirichlet-to-Neuman operator to synthesize data to test imaging method.



## (6) Imaging with the Linear Sampling Method

**Near-field operator**  $\mathcal{N}$ : integral operator defined with data obtained on the accessible part of the structure (on the section  $\Sigma_{-R}$  of the left half-guide).

- For each point  $y$  of a sampling grid  $\mathcal{G}$ , solve the near-field equation:

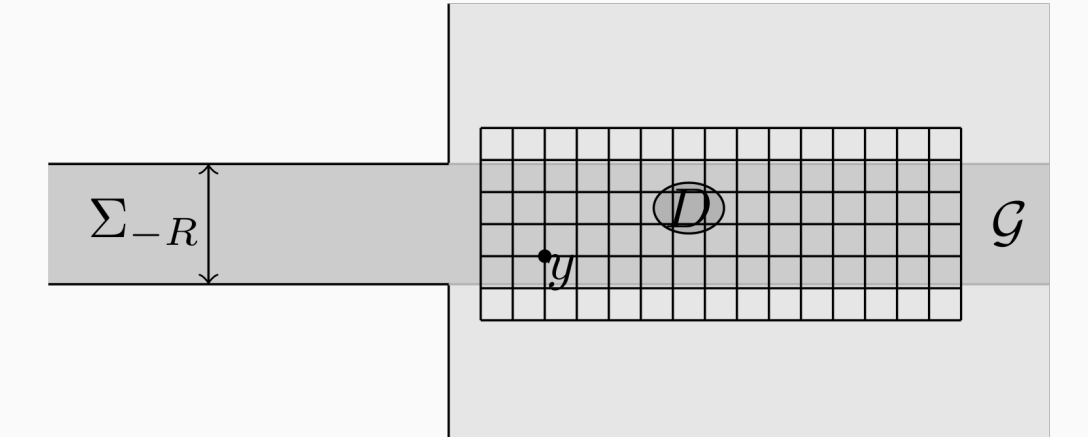
$$\mathcal{N}h(\cdot, y) = G(\cdot, y)|_{\Sigma_{-R}}$$

$\mathcal{N}$  is compact  $\Rightarrow$  regularization.

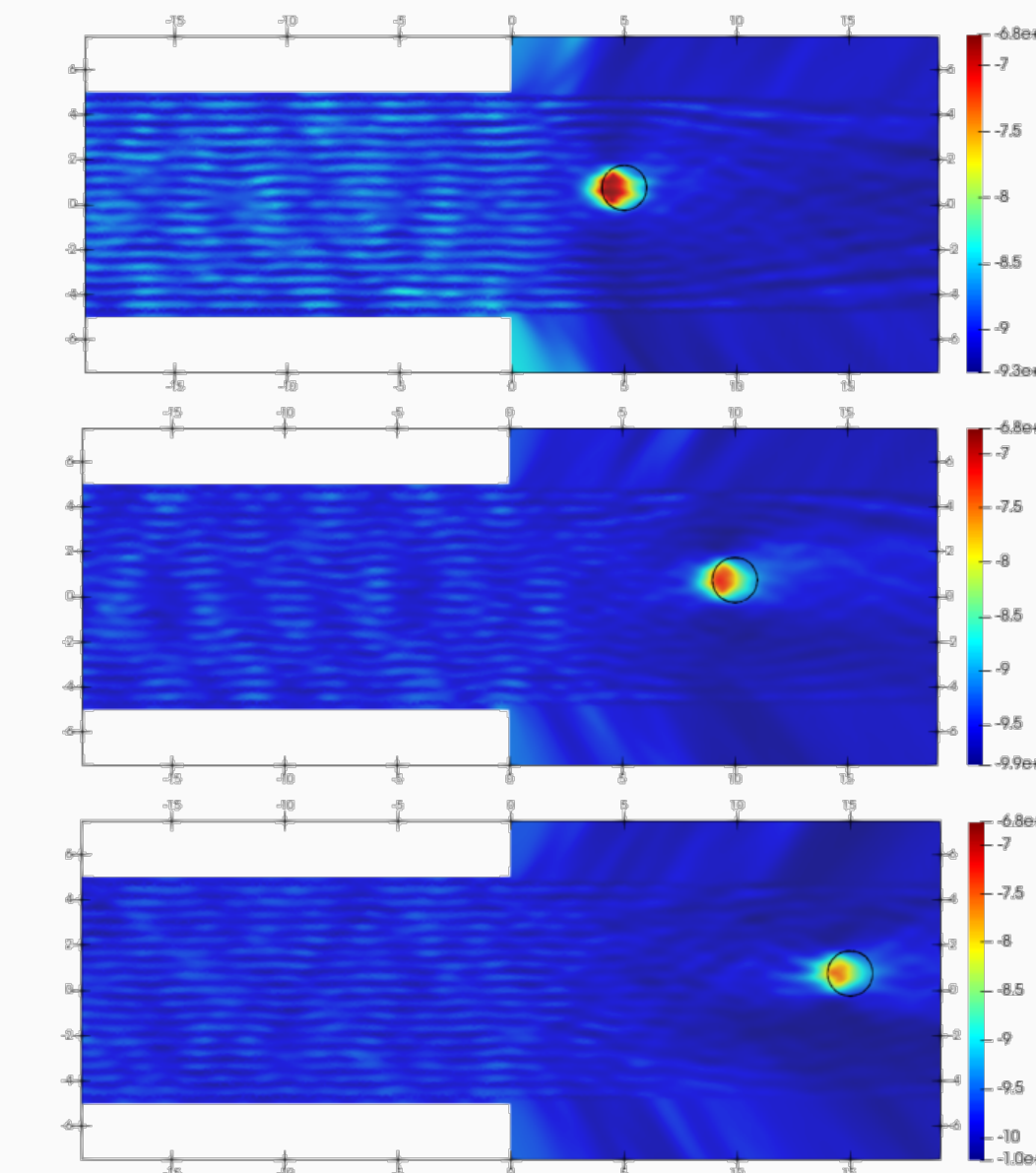
- Plot the level curves of the function

$$H : y \mapsto \log \left( 1 / \|h(\cdot, y)\|_{L^2(\Sigma_{-R})} \right)$$

- Property: the near-field equation has a solution "  $\iff$  "  $y \in D$ .
- $H$  is a "characteristic" function of the obstacle  $\Rightarrow$  we image the defect.



## (7) Numerical results



Top:  $d = 5$ , middle:  $d = 10$ , bottom:  $d = 15$ .

### Parameters:

- $N_p = 19$  propagating modes in the left half-guide,
- $\sigma = 10\%$  of noise in the data,
- Dirichlet obstacle.

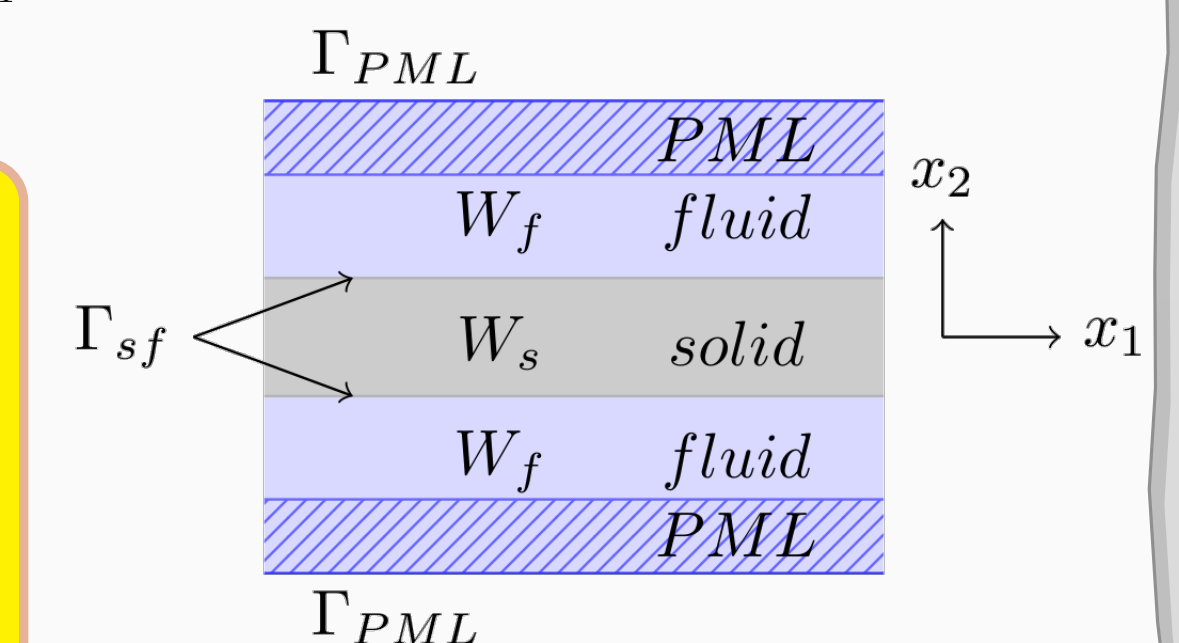
### Interpretation:

The quality of the reconstruction is deteriorated when the distance  $d$  of the obstacle to the junction increases: data is lost through the partial leakage of waves in the surrounding medium.

## (8) Elastic plate immersed in a fluid

**Mode**=solution  $g_n^\pm(x_1, x_2) = (\mathbf{u}_n, \varphi_n)^t(x_2) e^{\pm i \beta_n x_1}$  of the homogeneous fluid-structure problem:

$$\begin{cases} \operatorname{div}(\sigma(\mathbf{u})) + \rho_s \omega^2 \mathbf{u} = 0 & \text{in } W_s, \\ \alpha \partial_{x_2} (\alpha \partial_{x_2} \varphi) + \partial_{x_1}^2 \varphi + k_f^2 \varphi = 0 & \text{in } W_f, \\ \sigma(\mathbf{u}) \mathbf{n}_s = -i \omega \rho_f \varphi \mathbf{n}_s & \text{on } \Gamma_{sf}, \\ -i \omega \mathbf{u} \cdot \mathbf{n}_s = \nabla \varphi \cdot \mathbf{n}_s & \text{on } \Gamma_{sf}, \\ \nabla \varphi \cdot \mathbf{n}_f = 0 & \text{on } \Gamma_{PML}. \end{cases}$$



- Different families of modes are computed: leaky Lamb modes, Scholte modes (interface modes) requiring a specific treatment, PML modes.
- $XY$  formalism is derived: bi-orthogonality, modal decomposition of the Green tensor.
- Perspectives:** direct problem, adaptation of the LSM and experimental validation.