



**HAL**  
open science

## Diamond-based active antireflective optical windows with omniphobic properties

Ben Khemis Sirine, Emmanuel Scorsone, Raphael Guillemet

► **To cite this version:**

Ben Khemis Sirine, Emmanuel Scorsone, Raphael Guillemet. Diamond-based active antireflective optical windows with omniphobic properties. SBDD XXVII - Hasselt Diamond Workshop 2023, Mar 2023, Hasselt, Belgium. . cea-04107481v2

**HAL Id: cea-04107481**

**<https://cea.hal.science/cea-04107481v2>**

Submitted on 20 Dec 2023

**HAL** is a multi-disciplinary open access archive for the deposit and dissemination of scientific research documents, whether they are published or not. The documents may come from teaching and research institutions in France or abroad, or from public or private research centers.

L'archive ouverte pluridisciplinaire **HAL**, est destinée au dépôt et à la diffusion de documents scientifiques de niveau recherche, publiés ou non, émanant des établissements d'enseignement et de recherche français ou étrangers, des laboratoires publics ou privés.

# DIAMOND-BASED ACTIVE ANTIREFLECTIVE OPTICAL WINDOWS WITH OMNIPHOBIC PROPERTIES

<sup>1</sup>Sirine Ben Khemis, <sup>1</sup>Emmanuel Scorsone, <sup>2</sup>Raphael Guillemet  
<sup>1</sup>Université Paris-Saclay, CEA, LIST, F-9112, Palaiseau, France  
<sup>2</sup>Thales Research & Technology, Palaiseau, France  
 sirine.benkhemis@cea.fr

## Industrial context

Infrared windows are among the key optical components in infrared detection systems with military and civil applications. However, the optical properties of these systems, commonly used in severe environmental conditions, can be altered due to the formation of biofilms or contaminants deposition. To protect these systems, we propose to extend the functionality of these optical surfaces, by developing robust « active » diamond windows allowing them to be fitted with anti-dirt, anti-fog and anti-icing properties. Once doped with boron, diamond has remarkable electrochemical properties, including the capacity of electrochemical self-cleaning of its surface. However, the high boron content also affects the optical transmission in diamond. Thus, the principal aim of the D-FACTO project is to investigate the boron doping level necessary to achieve the electrochemical self-cleaning properties of the diamond surface without deteriorating the optical transmission of the windows

### Applications

Anti-reflective Optical Windows



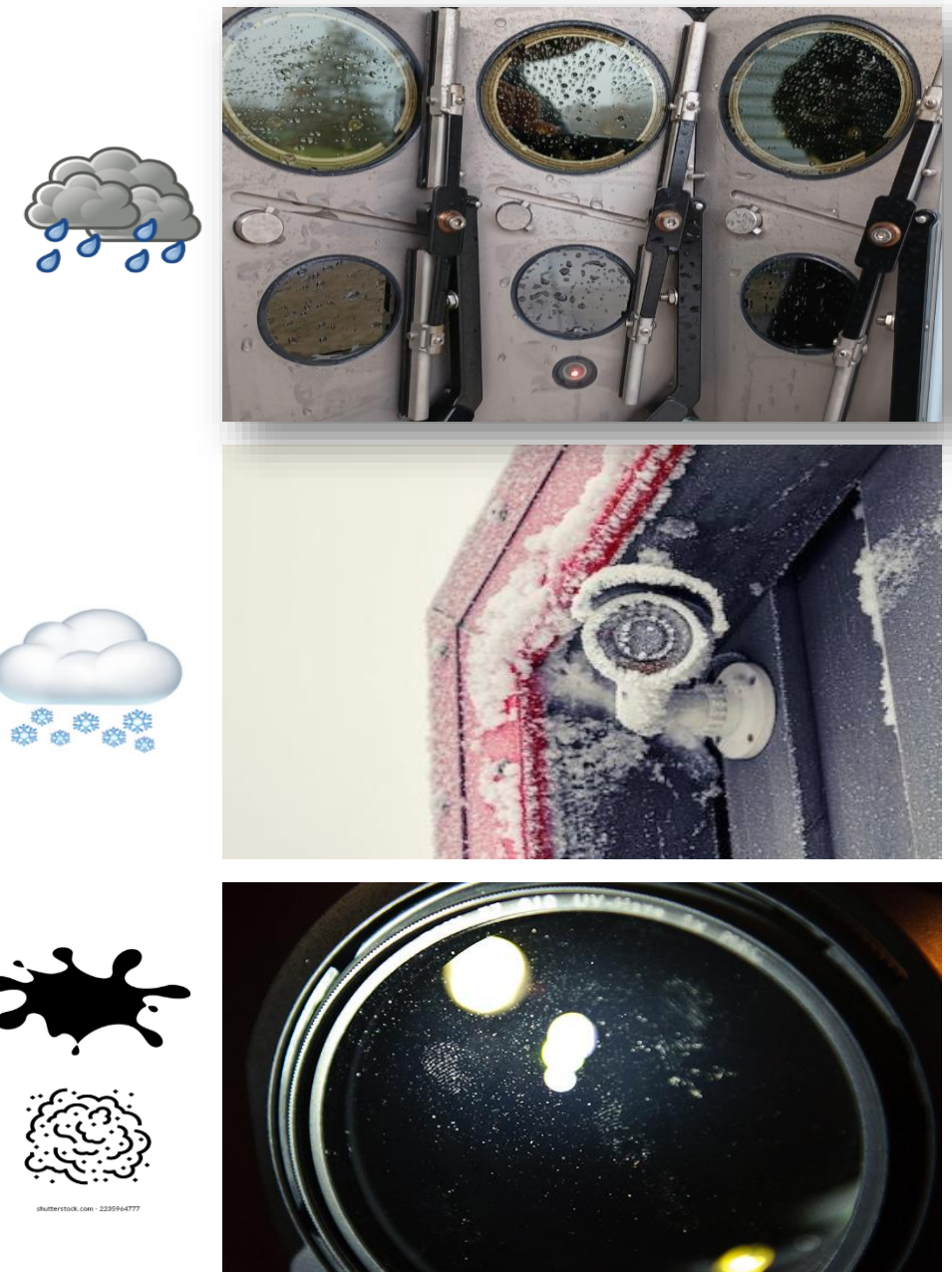
Surveillance systems



Airborne sensors

### Industrial Issue

Harsh environmental condition



Effect of dust

Clearheaded footage



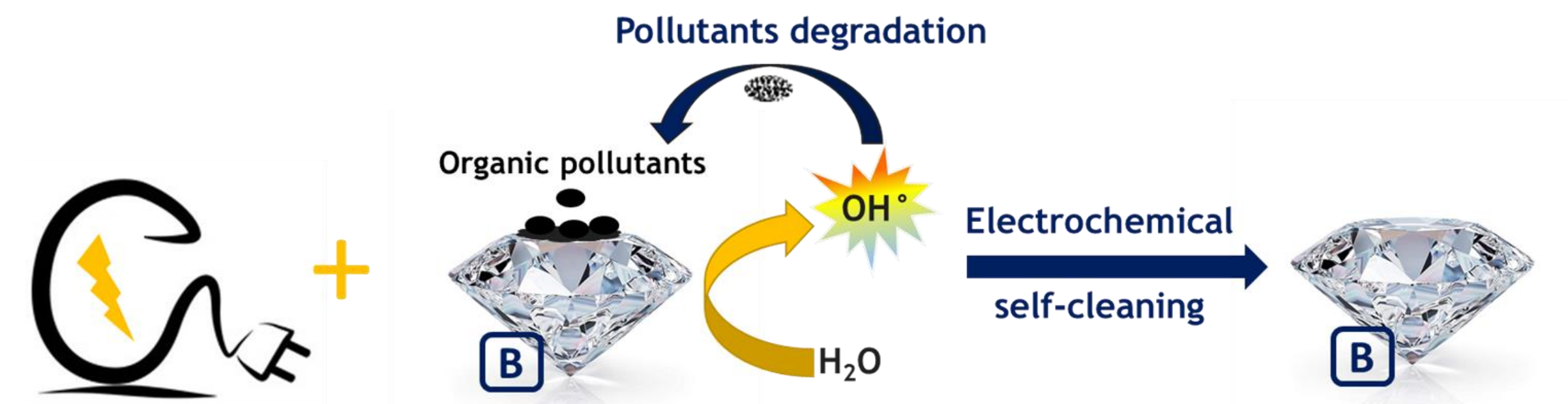
Dirt, Dust buildup

Blurry footage



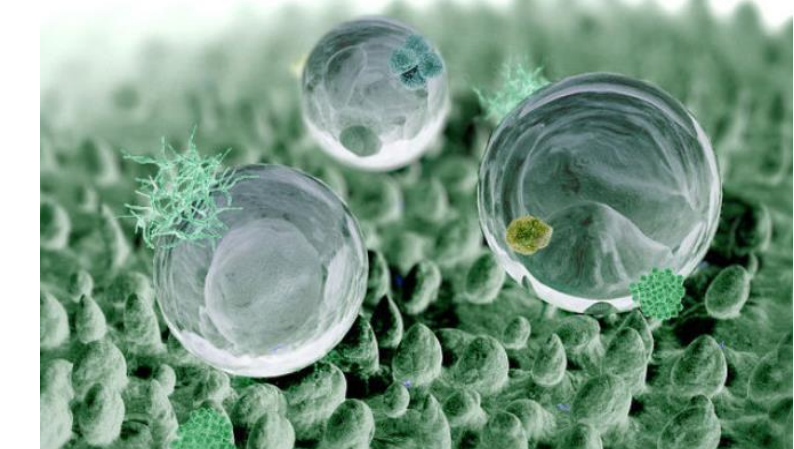
### Solutions

1 Electrochemical Self-cleaning coating : Boron-Doped Diamond



2 Anti-reflective  
Anti-icing  
Anti-fouling

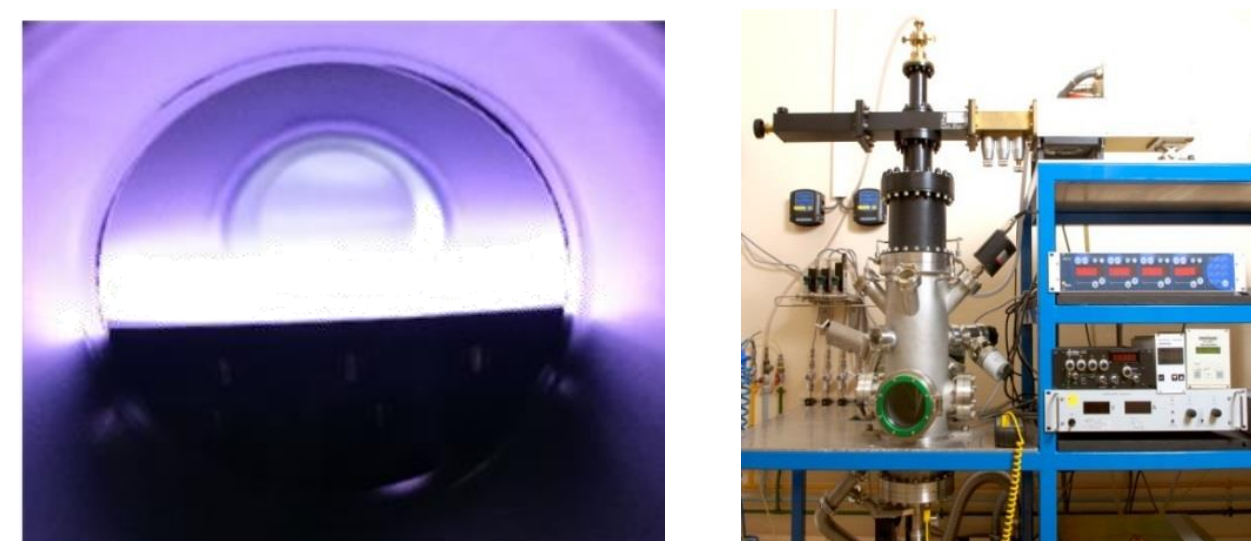
Nanostructuring



## Diamond growth on optical windows

Boron-Doped Diamond (BDD) Film deposition

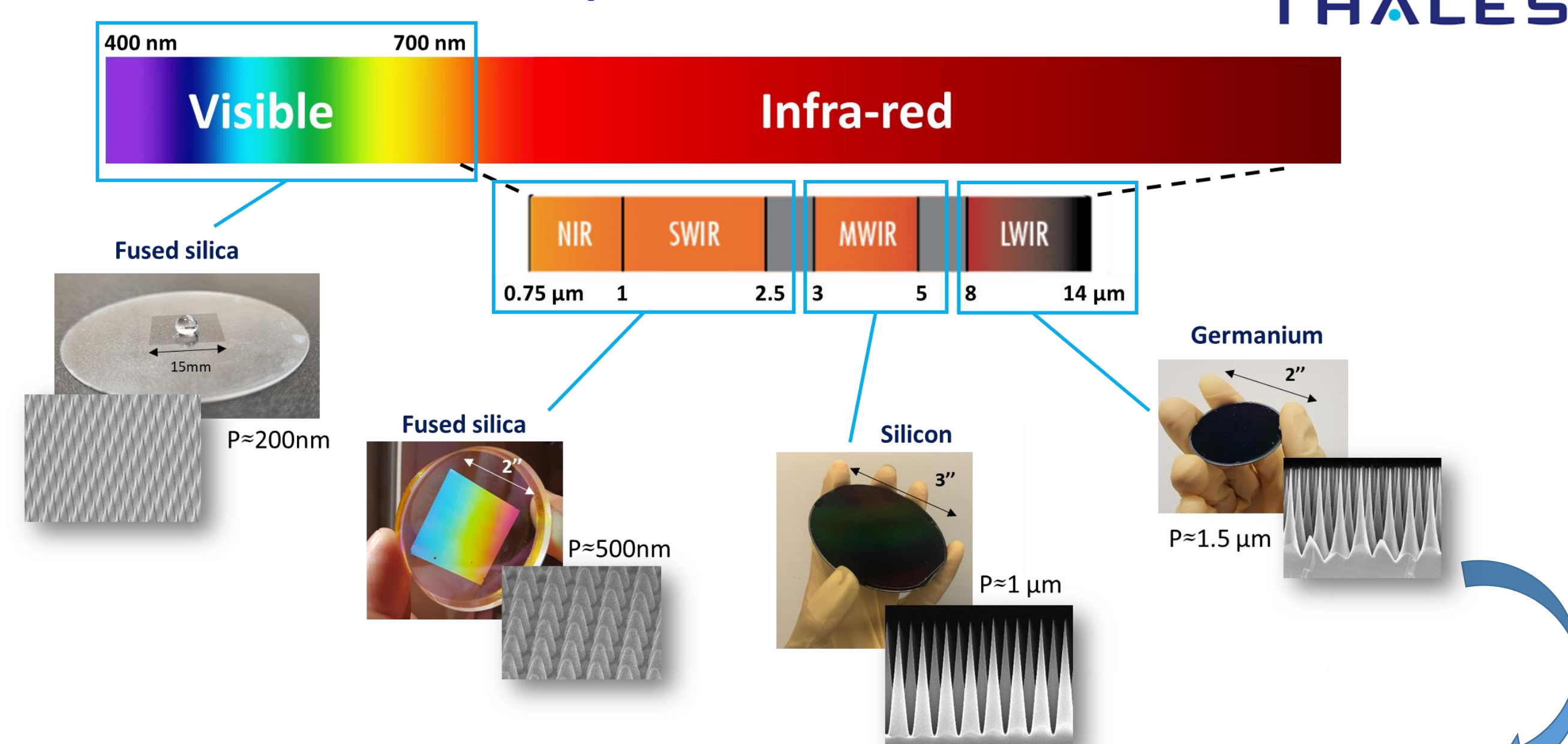
By MP-CVD in home-made reactor



Operating conditions:

- Gas : CH<sub>4</sub>, H<sub>2</sub>, TMB
- 500 < T °C < 900
- P mBar ~ 30

Optical windows

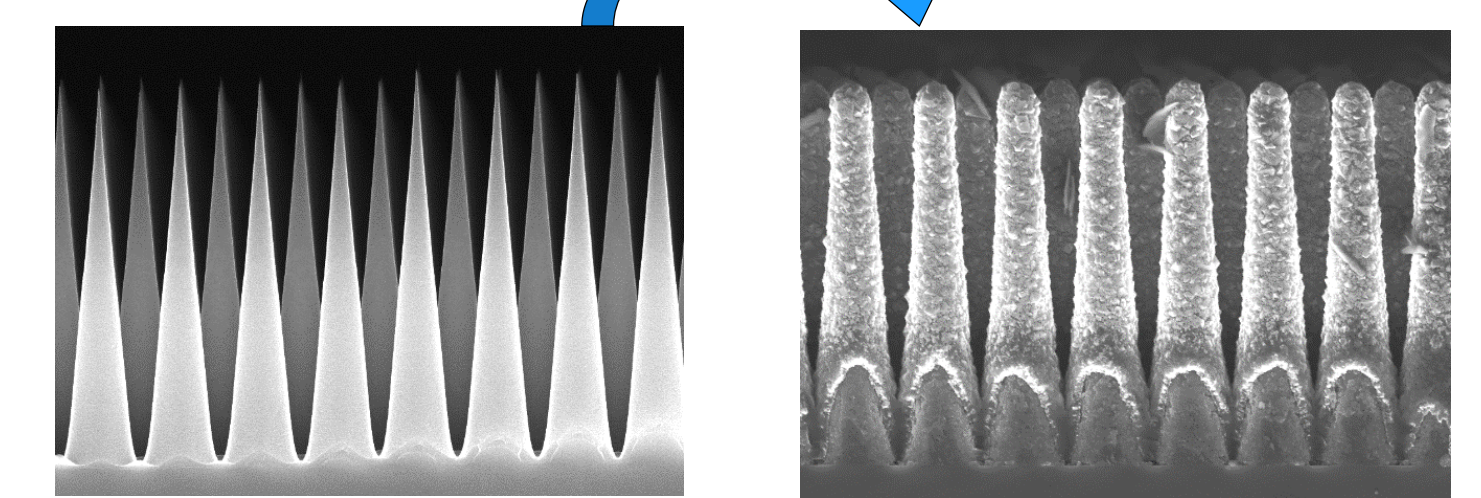


Challenge: diamond growth on Germanium (no carbide formation, low melting point, large thermal expansion mismatch between diamond and Ge) C.A. Rego, et al., Diamond and Related Materials, Volume 3, Issues 4-6, 1994

## Nanostructuring

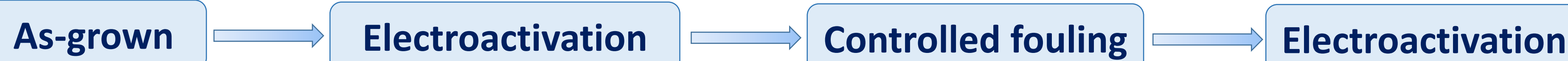
Polycrystalline diamond on nanostructured silicon surfaces

Diamond deposition

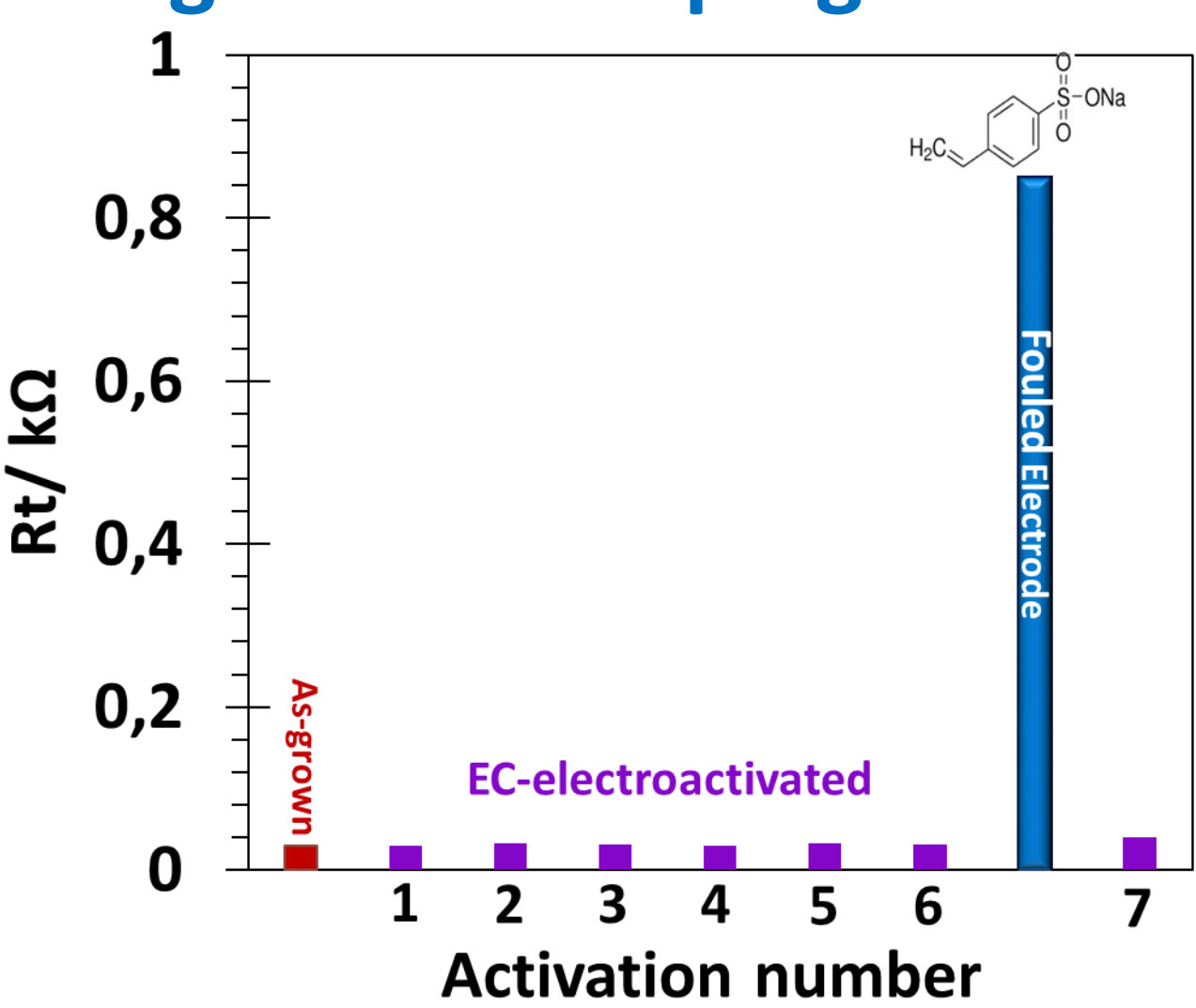


## Electrochemical Self-cleaning

Electrochemical impedance spectroscopy (EIS) characterization



High-Boron doping  $2 \times 10^{21} \text{ B.cm}^{-3}$



➤ Significant impact of the Boron doping on the charge transfer resistance (Rt) of the BDD electrode

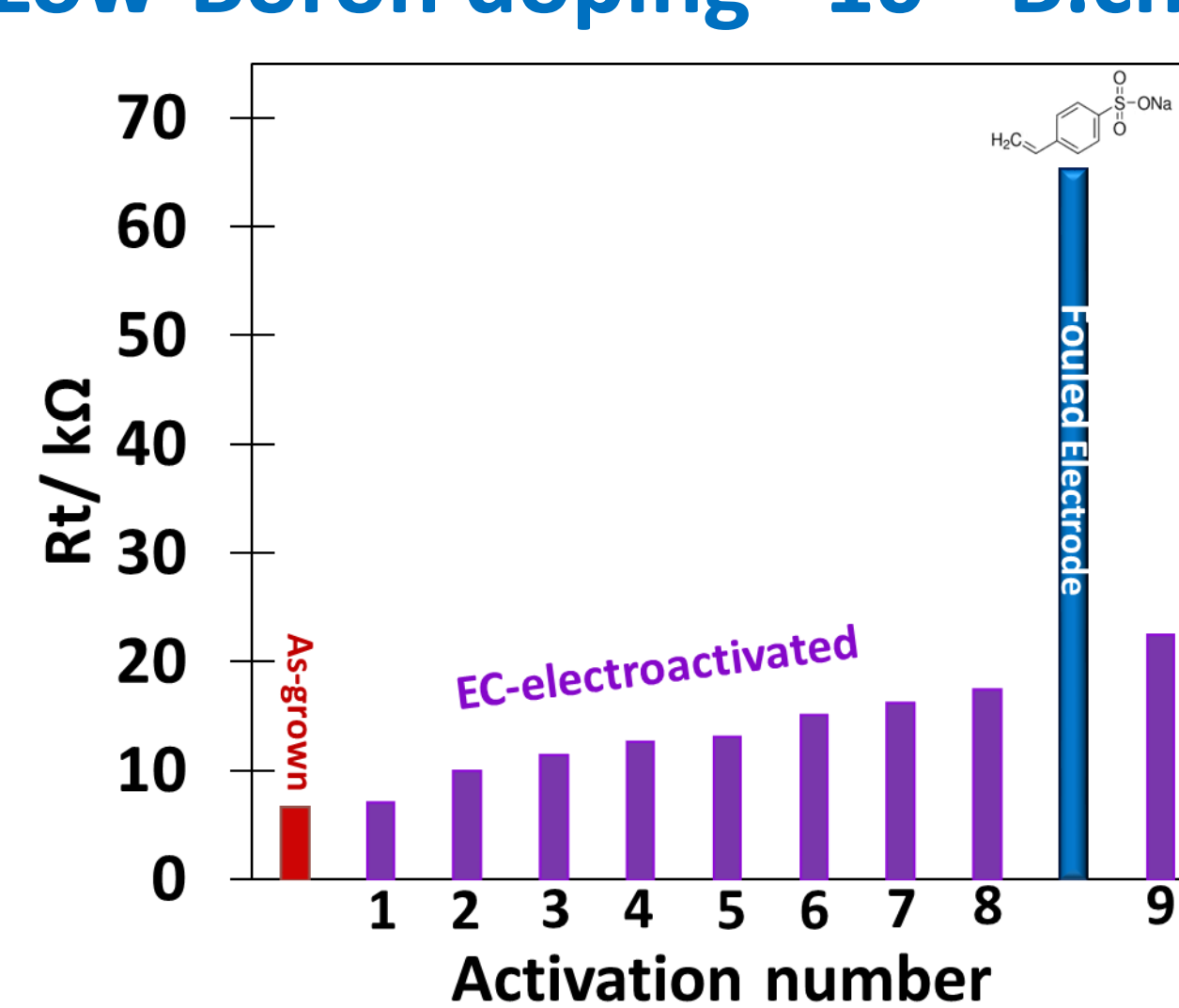
➤ Stability of the electrode after each activation « cleaning »

➤ Efficient cleaning after electrode fouling

➔ The boron content in the diamond film impacts the stability of the electrode to the activation process

Evolution of the surface termination

Low-Boron doping  $\sim 10^{19} \text{ B.cm}^{-3}$



➤ Evolution of the electrode after each cleaning  
Increase in Rct ⇔ Decrease of the electrochemical reactivity

➤ Efficient cleaning after electrode fouling  
BUT still drifts from Rt of the as-grown electrode

## Conclusions & Perspectives

➤ High boron content is well known to favor high electrode reactivity and efficient self-cleaning when using current pulse cleaning. But it drastically affects optical transmission in the IR region

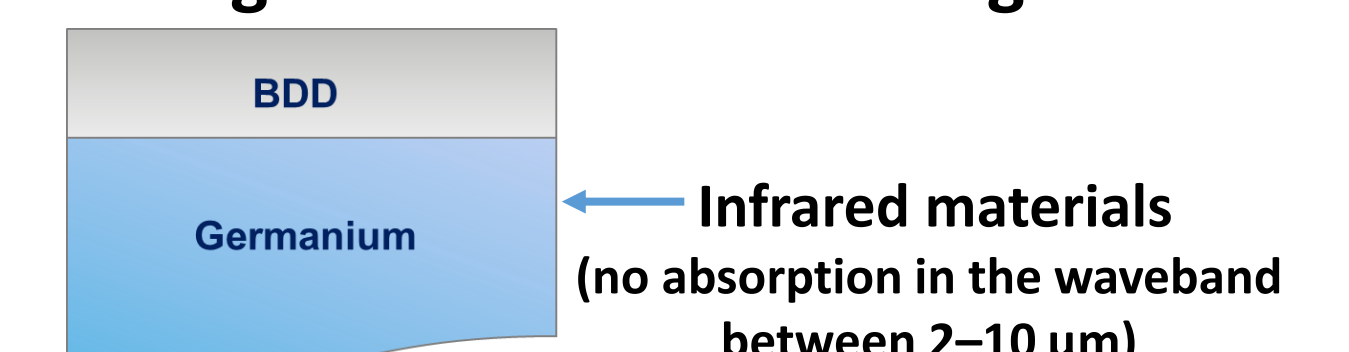
➤ Reducing too much the boron content affects cleaning efficiency and electro stability



➤ Low-Boron doped diamond: Investigating the evolution of the surface termination and/or the bulk material after successive pulsed activation.

➤ Investigation of the boron doping level necessary to achieve the electrochemical auto-cleaning properties of the diamond surface without deteriorating the optical transmission of the windows.

➤ Optimisation of the stack thin films to enhance the adhesion strength of BDD film on the germanium.



This work has been funded by the French National Research Agency (ANR) & DGA Defence Innovation Agency (AID) through the project ANR-21-ASTR-0005 «D-FACTO» coordinated by Dr Raphaël Guillemet.