



**HAL**  
open science

## **A Feedback mechanism between crystals and bubbles in a RuO<sub>2</sub>-bearing melt**

Luiz de Paula Pereira, Rafaël Bianchini Nuernberg, Olivier Podda, Norma-Maria Pereira Machado, Annabelle Laplace-Ploquin, Franck Pigeonneau, Ulrich Kueppers, Kai-Uwe Hess, Donald Dingwell

### ► **To cite this version:**

Luiz de Paula Pereira, Rafaël Bianchini Nuernberg, Olivier Podda, Norma-Maria Pereira Machado, Annabelle Laplace-Ploquin, et al.. A Feedback mechanism between crystals and bubbles in a RuO<sub>2</sub>-bearing melt. 26th International Commission on Glass XXVI International Congress, Jul 2022, Berlin, Germany. cea-03776074

**HAL Id: cea-03776074**

**<https://cea.hal.science/cea-03776074v1>**

Submitted on 13 Sep 2022

**HAL** is a multi-disciplinary open access archive for the deposit and dissemination of scientific research documents, whether they are published or not. The documents may come from teaching and research institutions in France or abroad, or from public or private research centers.

L'archive ouverte pluridisciplinaire **HAL**, est destinée au dépôt et à la diffusion de documents scientifiques de niveau recherche, publiés ou non, émanant des établissements d'enseignement et de recherche français ou étrangers, des laboratoires publics ou privés.

# A Feedback mechanism between crystals and bubbles in a RuO<sub>2</sub>-bearing melt

L. Pereira,<sup>1,2,3\*</sup> R.B. Nuernberg,<sup>2</sup> O. Podda,<sup>2</sup> N. Machado,<sup>2</sup> A. Laplace,<sup>2</sup> F. Pigeonneau,<sup>3</sup> U. Kueppers,<sup>1</sup> K-U. Hess,<sup>1</sup> D.B. Dingwell.<sup>1</sup>

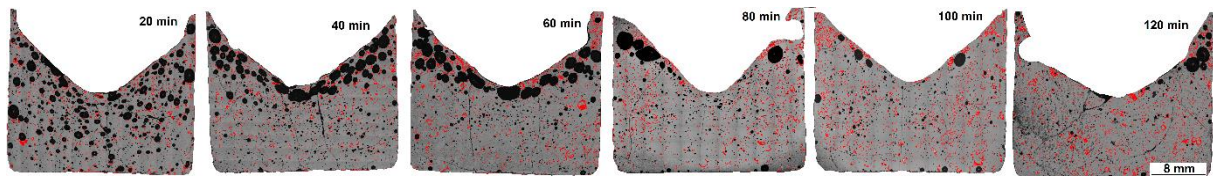
1 Department of Earth and Environmental Sciences, Ludwig-Maximilians-University, Munich, Germany

2 CEA, DES, ISEC, DE2D, Univ Montpellier, LDMC, Marcoule, France.

3 CEMEF, MINES ParisTech, PSL Research University, CNRS UMR 7635, CS 10207, Sophia Antipolis Cedex, France.

luiz.pereira@min.uni-muenchen.de

Crystals are known to affect bubble behavior in natural and industrial oxide glass melts.[1] In volcanology, high crystal contents ( $\phi_c > 30$  vol.%) may drastically increase the suspension viscosity, altering bubble dynamics severely enough to modify the eruptive style.[2] During industrial glass production, crystals may affect the process and the final product, if formed in an uncontrolled way. In this work, we investigate in laboratory-scale how a small crystallinity of nano-sized RuO<sub>2</sub> ( $\phi_c \sim 2$  vol.%) modifies bubble behavior in a melt, generating a cyclic gas-release phenomenon (Fig. 1).



**Figure 1:** Optical microscope images of samples containing a borosilicate melt (grey), RuO<sub>2</sub> crystals (red), and bubbles (black) prepared at 1000 °C different dwell times.

We conduct a series of experiments on a three-phase system composed of a borosilicate melt, bubbles, and RuO<sub>2</sub> crystals. Optical microscopic investigation is performed on the products of thermal treatment at 1000 °C for different durations. Based on viscosity measurements, contact angle measurements, and numerical simulations, we propose a mechanism of entrainment of bubbles carrying crystals to the upper surface accompanied by crystal aggregation, and followed by an increase in viscosity to explain the observed phenomenon.

## References

- [1] Z. Liu; L. Pandelaers; B. Blanpain; M. Guo. *Metallurgical and Materials Transactions B*, 49, **2018**, 2469-2489
- [2] H.M. Gonnermann, M. Manga. *Modeling Volcanic Processes: The Physics and Mathematics of Volcanism (chapter 4)*, **2013**, 55-84