



SOL modelling of the JT-60SA tokamak initial operational scenario using SOLEDGE-EIRENE code

K Galazka, L Balbinot, G L Falchetto, N Rivals, P Tamain, Y Marandet, H Bufferand, P Innocente, G Ciraolo

► To cite this version:

K Galazka, L Balbinot, G L Falchetto, N Rivals, P Tamain, et al.. SOL modelling of the JT-60SA tokamak initial operational scenario using SOLEDGE-EIRENE code. 48th EPS conference on plasma physics, Jun 2022, videoconference, Netherlands. cea-03766515

HAL Id: cea-03766515

<https://cea.hal.science/cea-03766515>

Submitted on 1 Sep 2022

HAL is a multi-disciplinary open access archive for the deposit and dissemination of scientific research documents, whether they are published or not. The documents may come from teaching and research institutions in France or abroad, or from public or private research centers.

L'archive ouverte pluridisciplinaire **HAL**, est destinée au dépôt et à la diffusion de documents scientifiques de niveau recherche, publiés ou non, émanant des établissements d'enseignement et de recherche français ou étrangers, des laboratoires publics ou privés.



SOL modelling of the JT-60SA tokamak initial operational scenario using SOLEDGE-EIRENE code

K. Gałazka^{1,2}, L. Balbinot³, G. L. Falchetto¹, N. Rivals¹, P. Tamain¹, Y. Marandet⁴, H. Bufferand¹, P. Innocente³ and G. Ciraolo¹

¹ CEA, IRFM, F-13108 Saint-Paul-Lez-Durance, France

² IFPILM, ul. Hery 23, 01-497 Warszawa, Poland

³ Consorzio RFX, Corso Stati Uniti 4, 35127 Padova, Italy

⁴ Aix-Marseille Univ., CNRS, PIIM, Marseille, France

Introduction&Background

The main aim of this work is to assess the realistic heat loads on the first wall of the JT-60SA tokamak. To achieve this scope, for the first time the entire chamber and the subdivertor region is modeled by the fluid transport code SOLEDGE3X-EIRENE [1]. Whereas the full power scenario #2 modeling was reported elsewhere [2] here we focus on scenario #2 initial phase with carbon divertor and limited heating power P_{aux} , which is the main scanned parameter. Standard computational mesh with pumps situated next to the strike points (STD) is compared with full chamber + subdivertor mesh (SUBD).

Scenario #2 main parameters [3]:

$$\langle n_e \rangle = 5.6 \times 10^{19} \text{ m}^{-3}$$

$$P_{aux}^{max} = 19/26.5/33 \text{ MW}$$

$$n_{e,sep} < 2.5 \times 10^{19} \text{ m}^{-3}$$

References:

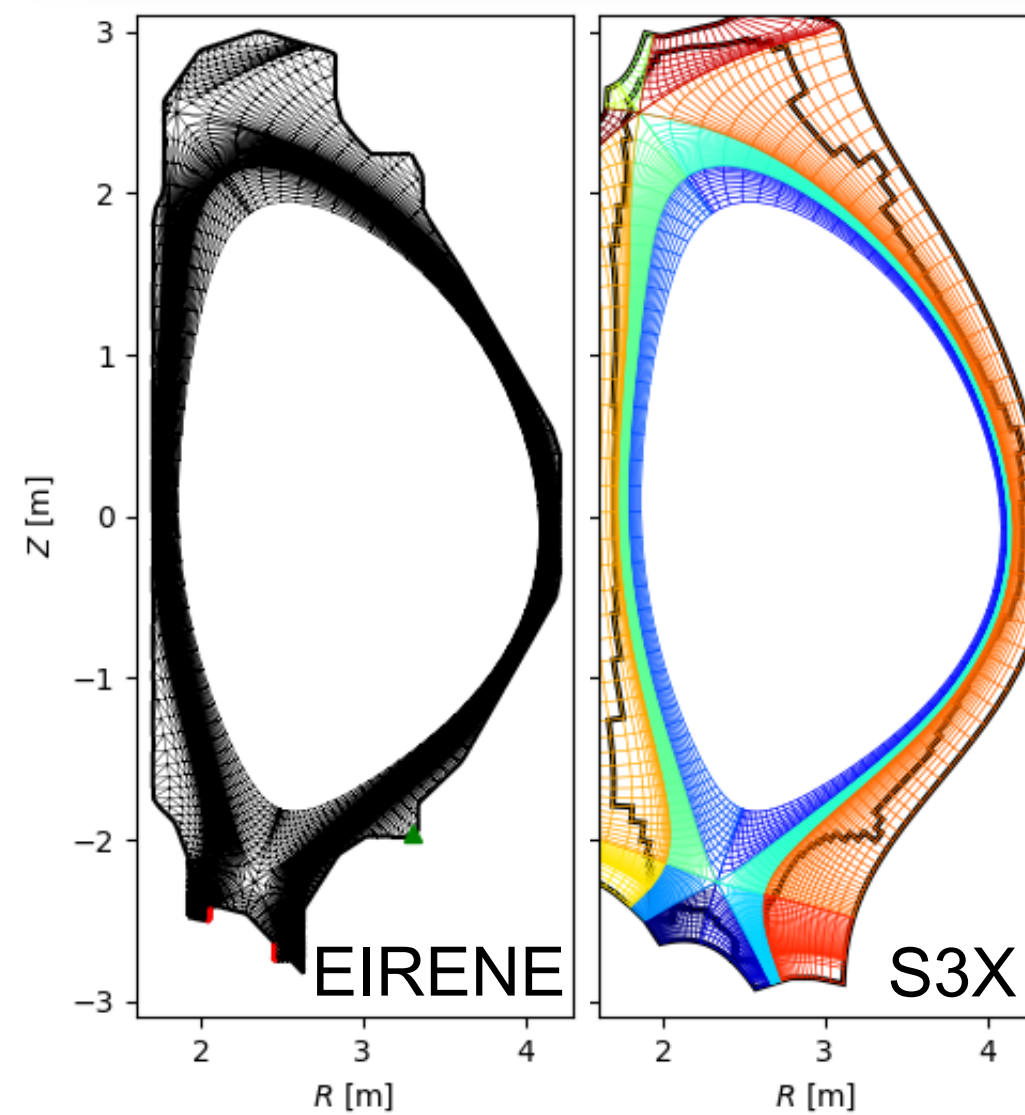
[1] H. Bufferand et al 2021 Nucl. Fusion 61 116052 (2021)

[2] N. Hayashi, et al., Proc. 26th IAEA Fusion Energy Conf., (2016)

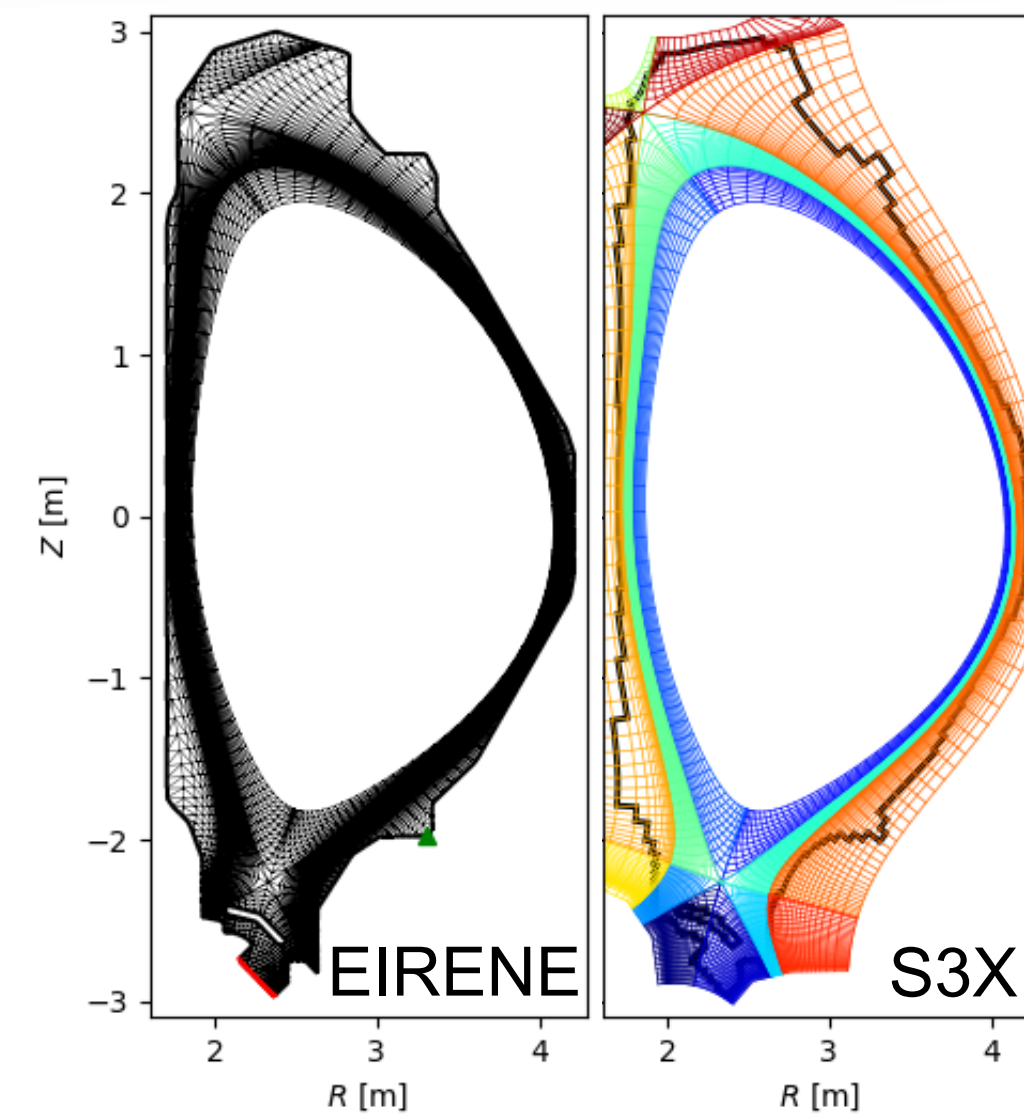
[3] JT-60SA Research Plan, Ver. 4, 2018/09

[4] L. Balbinot et al., in preparation

Simulations setup



Standard configuration (STD)



Subdivertor configuration (SUBD)

Input power @ core boundary scan:
 $P_{aux} = [15, 17.5, 20, 22.5, 25, 27.5, 30] \text{ MW}$
 Particle source @ core: $S_i = 1 \times 10^{21} \text{ part./s}$
 Deuterium fuelling: $\Gamma_D = 1 \times 10^{21} \text{ part./s}$
 C sputtering - Bohdansky formula
 EIRENE with simplified Kotov model
 (no elastic collisions on neutrals)
 No drifts

Wall properties:

$$R_D = 1.0$$

$$R_C = 0.1$$

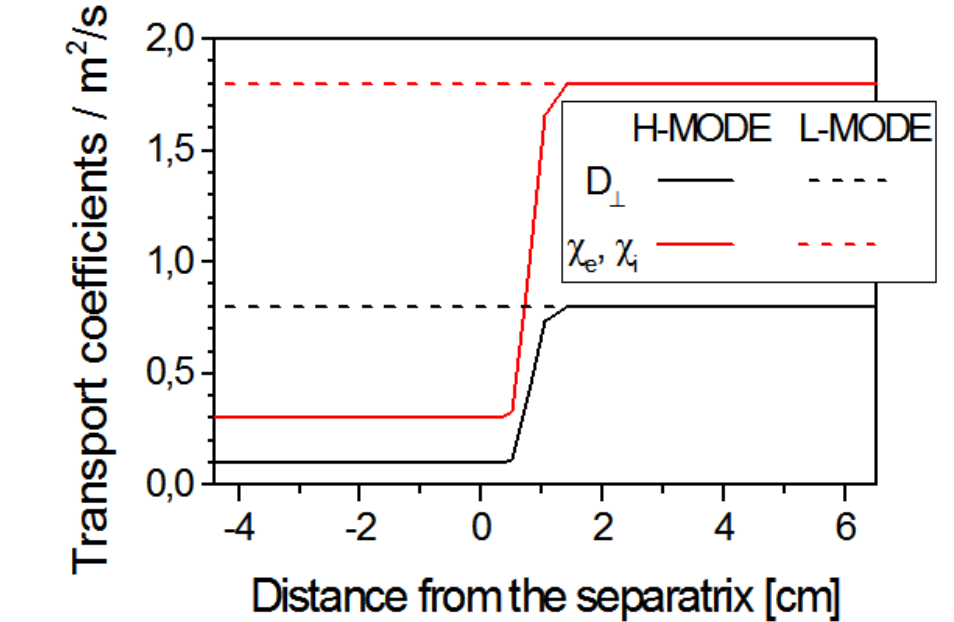
Pump albedo:

$$R_D = 0.95$$

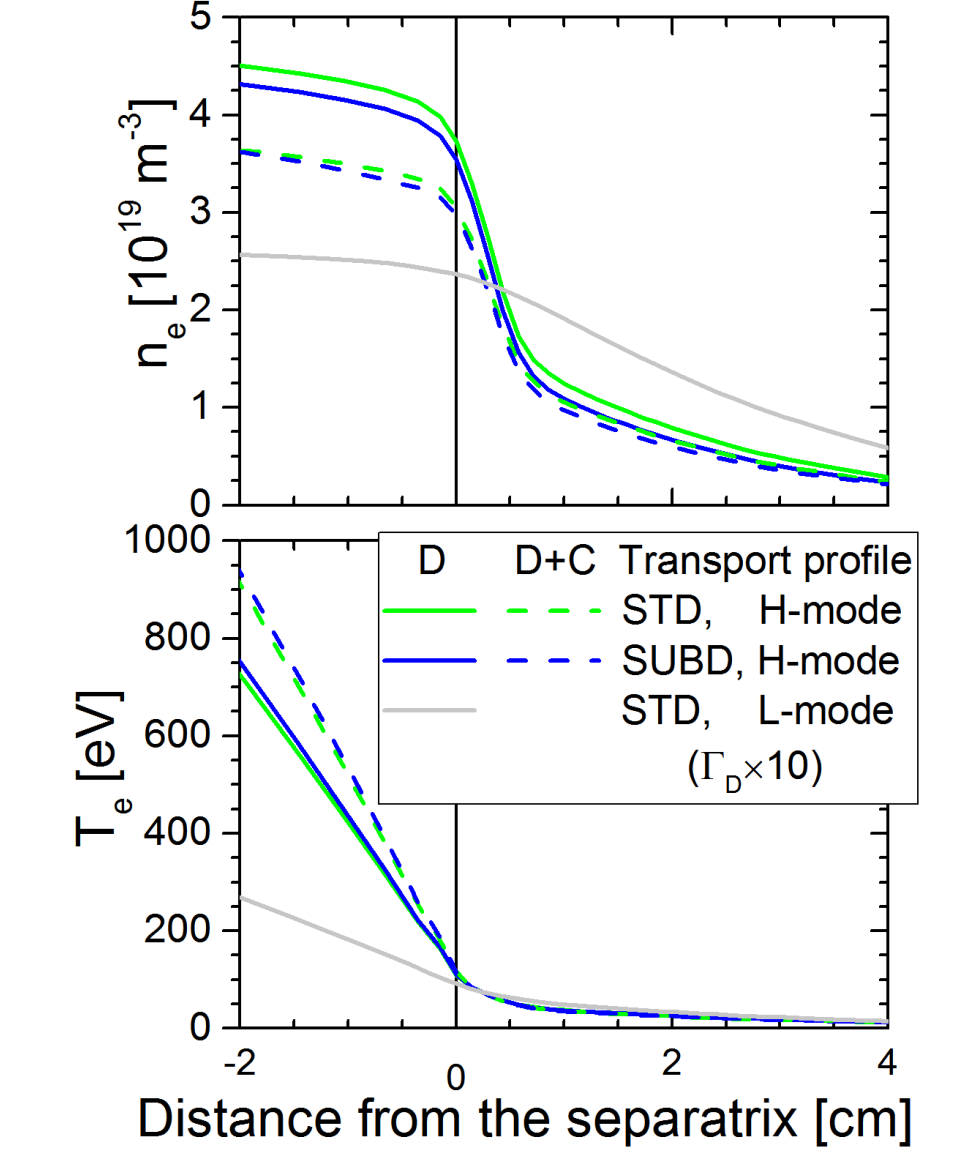
$$R_C = 0.1$$

OMP profiles

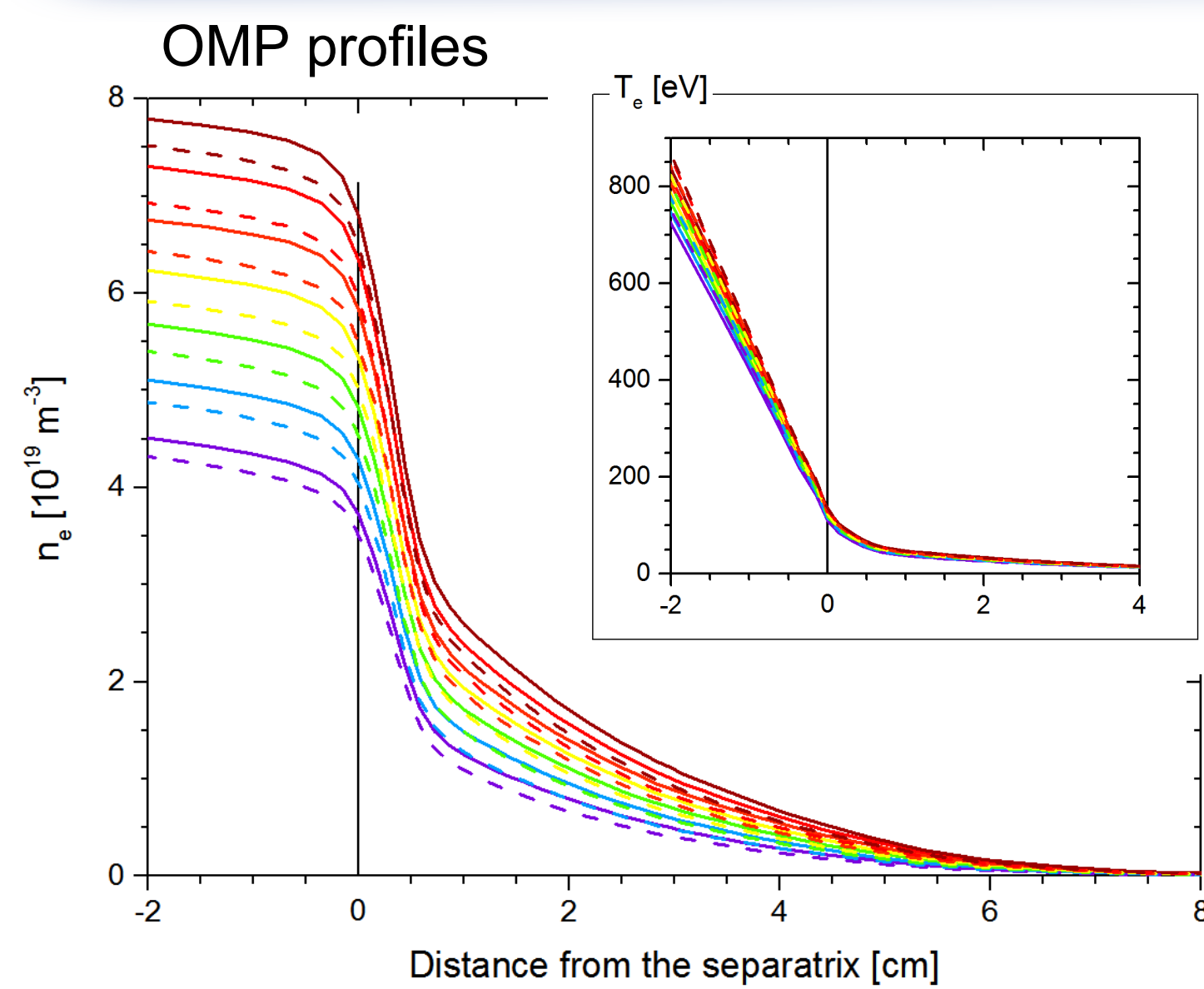
Transport coefficients @ OMP [4]



n_e, T_e comparison for $P_{aux} = 15 \text{ MW}$



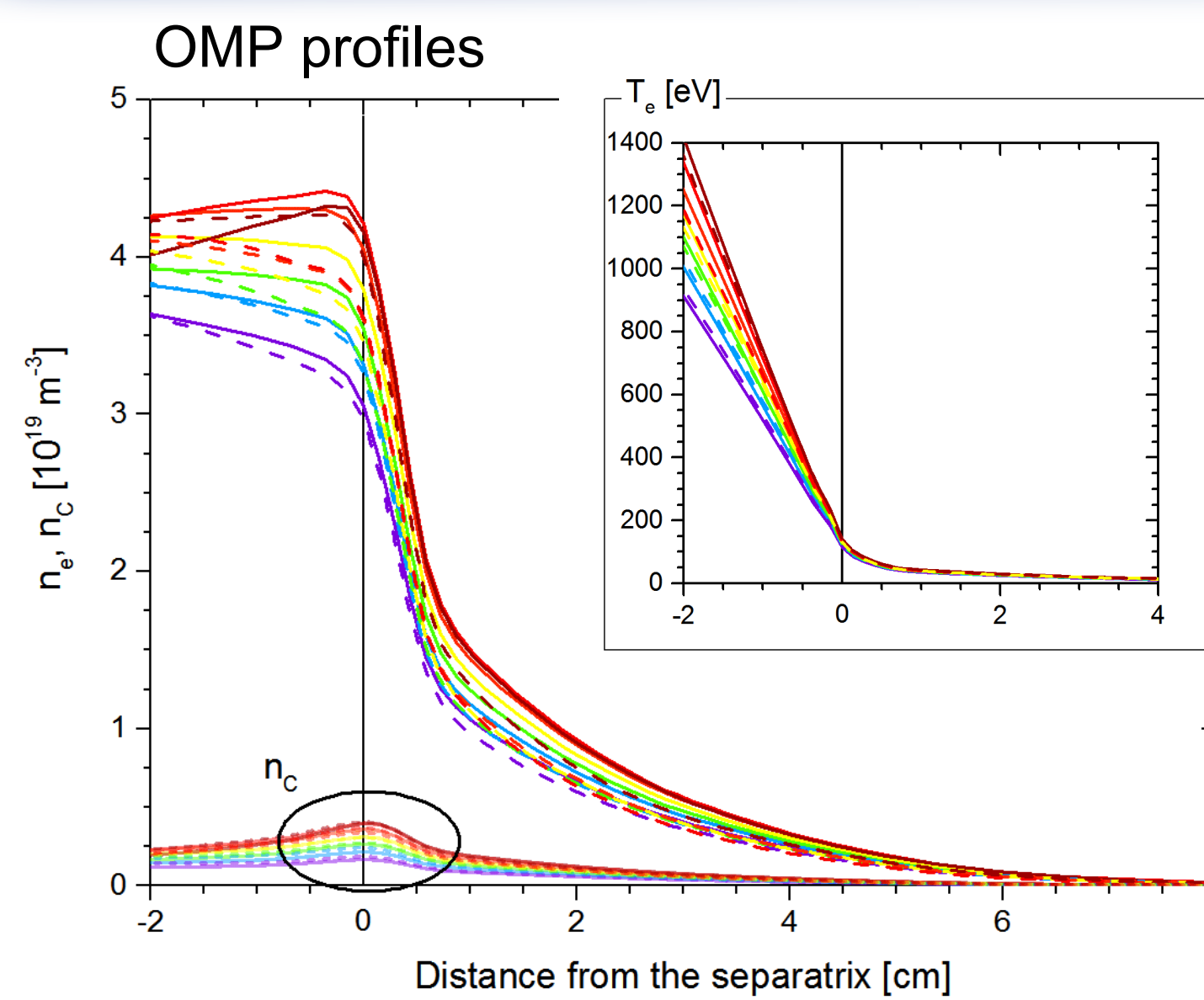
Power scan - pure D plasma



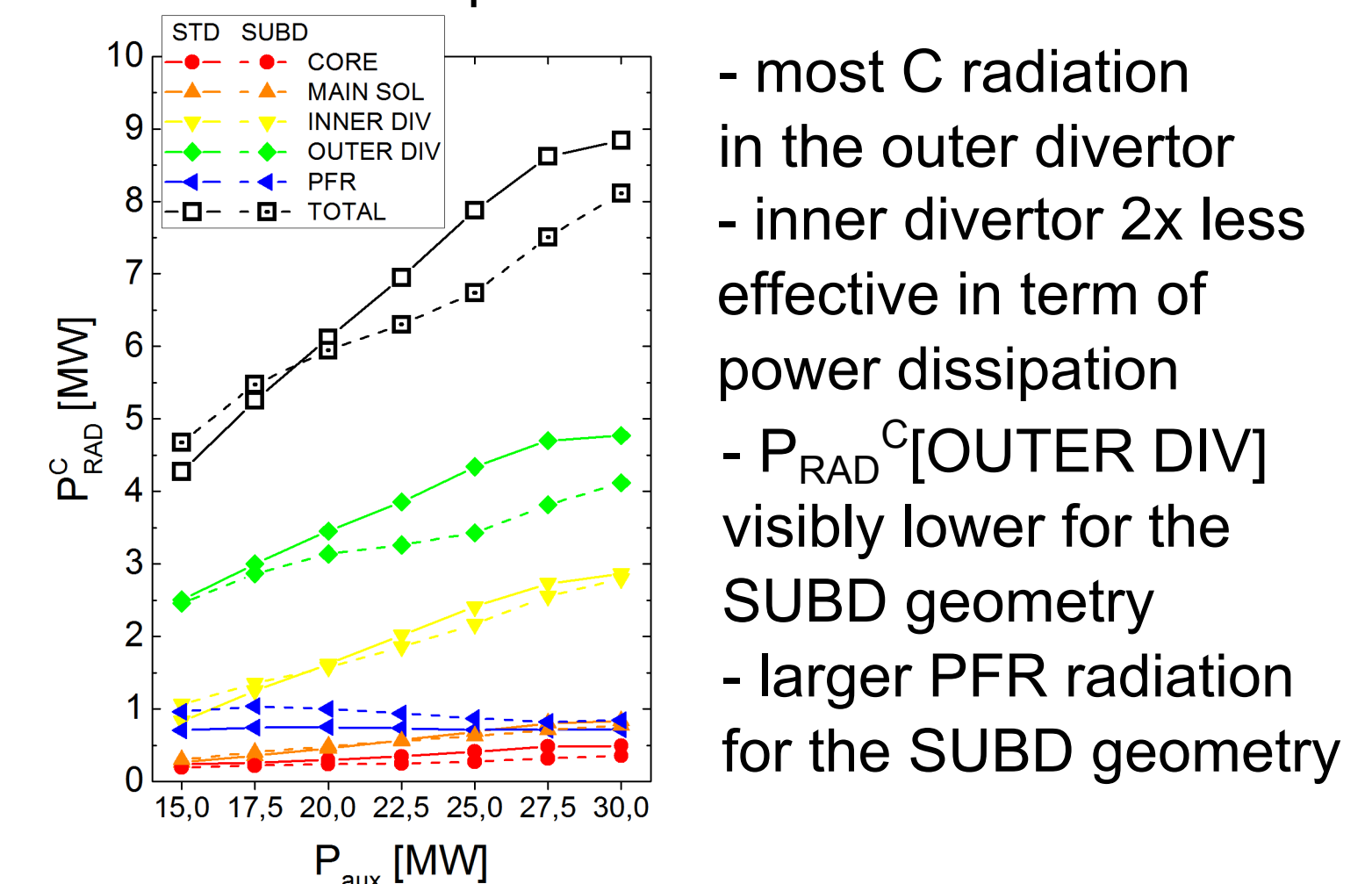
H-mode	P_{aux} [MW]
STD	15
SUBD	17.5
	20
	22.5
	25
	27.5
	30

- Rise of n_e with increasing P_{aux} (stronger for pure-D cases)
- Limited effect on T_e profile
- rise of n_C with increasing P_{aux}
- negligible effect of different geometry

Power scan - D+C plasma



C radiation power



- most C radiation in the outer divertor
- inner divertor 2x less effective in term of power dissipation
- P_{RAD}^C [OUTER DIV] visibly lower for the SUBD geometry
- larger PFR radiation for the SUBD geometry

Target profiles - electron density & temperature

Target profiles - heat load

Target profiles - electron density & temperature

Target profiles - heat load

STD

SUBD

STD

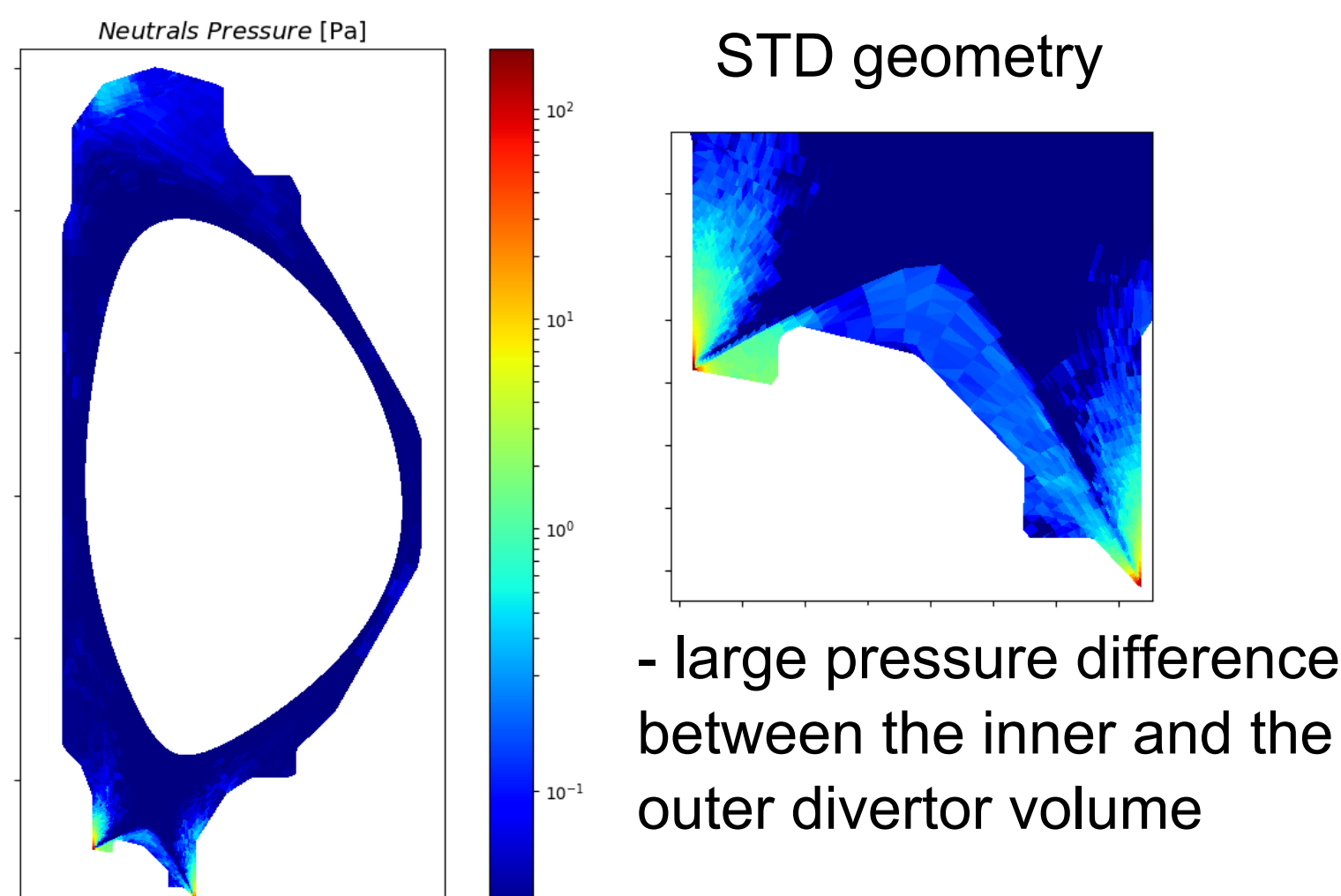
SUBD

Neutrals pressure 2D map

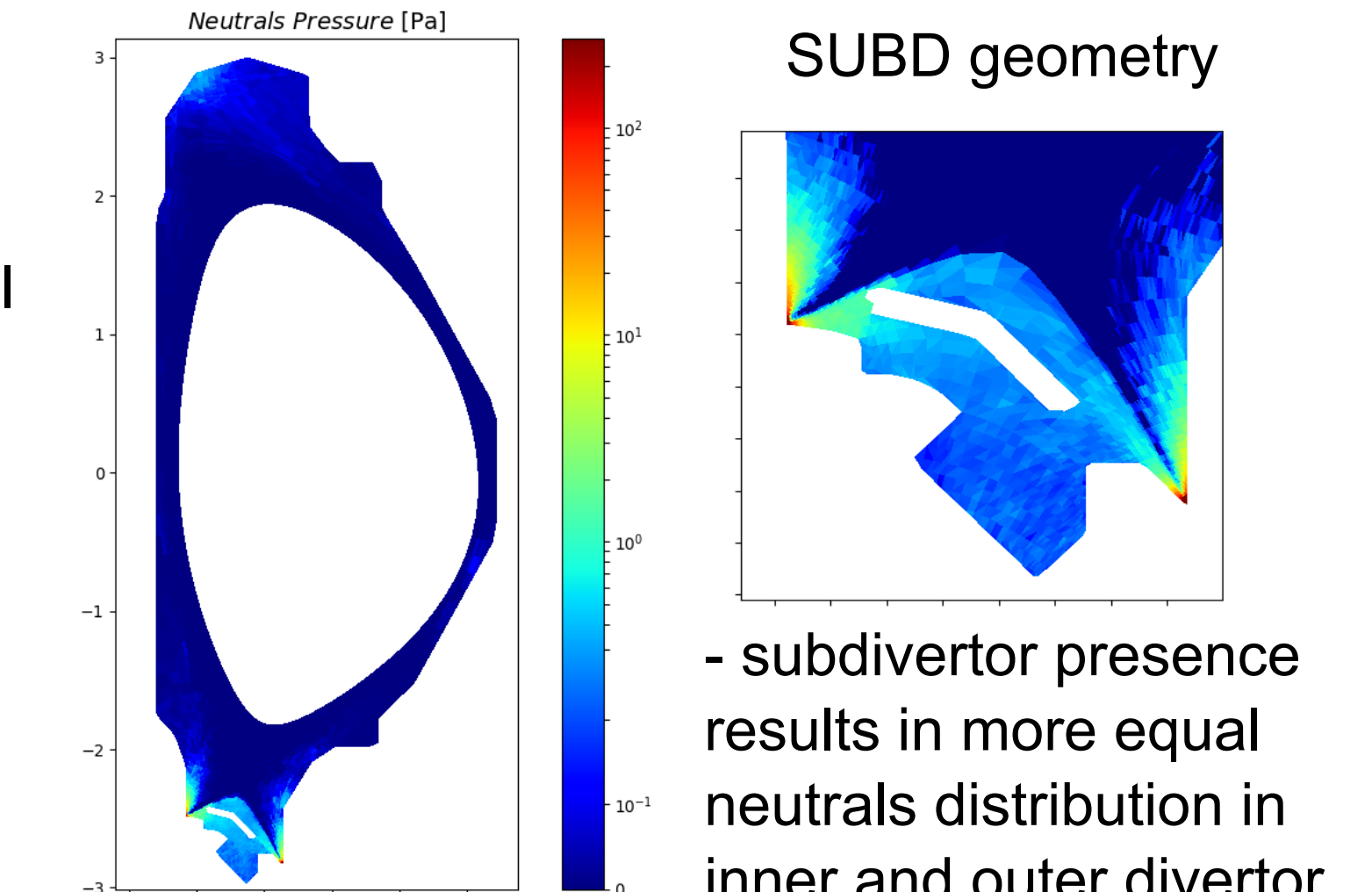
Conclusions

- a power scan was performed for the JT-60SA initial research phase fully inductive scenario #2 of JT-60SA in the range of [15, 30] MW
- increase in P_{aux} leads to increase of $n_{e,sep}$, which for pure-D cases exceeds the nominal n_e in the core, $5.6 \times 10^{19} \text{ m}^{-3}$, already for $P_{aux}=20 \text{ MW}$
- in D+C cases the $n_{e,sep}$ rise is less pronounced, a rise in n_C is observed from $1.6 \times 10^{18} \text{ m}^{-3}$ for $P_{aux}=15 \text{ MW}$ to $n_C=4.0 \times 10^{18} \text{ m}^{-3}$ for $P_{aux}=30 \text{ MW}$
- dominant C radiation losses take place in the divertor, the role of the main chamber SOL and CORE volume is limited, D-related losses are $\sim 0.7\text{-}1.0 \text{ MW}$ for all cases
- already for the lowest $P_{aux}=15 \text{ MW}$ cases the peak heat load exceeds the 10 MW/m^2 limit; as in previous research [4], additional power dissipation mechanism is required
- the presence of subdivertor causes local differences in neutral density, but has only minor effect on the final result: 1-1.5 MW lower of P_{RAD}^C [TOTAL] for $P_{aux}>22.5 \text{ MW}$

Neutrals pressure 2D map



STD geometry



SUBD geometry

- subdivertor presence results in more equal neutrals distribution in inner and outer divertor

