



HAL
open science

Soft X-ray characterization of halide perovskite film by scanning transmission X-ray microscopy

Haeyeon Jun, Hee Ryung Lee, Denis Tondelier, Bernard Geffroy, Philip Schulz, Jean-Eric Bourée, Yvan Bonnassieux, Sufal Swaraj

► To cite this version:

Haeyeon Jun, Hee Ryung Lee, Denis Tondelier, Bernard Geffroy, Philip Schulz, et al.. Soft X-ray characterization of halide perovskite film by scanning transmission X-ray microscopy. *Scientific Reports*, 2022, 12, pp.4520. 10.1038/s41598-022-08256-3 . cea-03630750v2

HAL Id: cea-03630750

<https://cea.hal.science/cea-03630750v2>

Submitted on 5 Apr 2022

HAL is a multi-disciplinary open access archive for the deposit and dissemination of scientific research documents, whether they are published or not. The documents may come from teaching and research institutions in France or abroad, or from public or private research centers.

L'archive ouverte pluridisciplinaire **HAL**, est destinée au dépôt et à la diffusion de documents scientifiques de niveau recherche, publiés ou non, émanant des établissements d'enseignement et de recherche français ou étrangers, des laboratoires publics ou privés.



Distributed under a Creative Commons Attribution 4.0 International License



OPEN

Soft X-ray characterization of halide perovskite film by scanning transmission X-ray microscopy

Haeyeon Jun^{1,3}, Hee Ryung Lee³, Denis Tondelier³, Bernard Geffroy^{2,3}, Philip Schulz⁴, Jean-Éric Bourée³, Yvan Bonnassieux³ & Sufal Swaraj¹✉

Organic–inorganic metal halide perovskites (MHPs) have recently been receiving a lot of attention due to their newfound application in optoelectronic devices, including perovskite solar cells (PSCs) which have reached power conversion efficiencies as high as 25.5%. However, the fundamental mechanisms in PSCs, including the correlation of degradation with the excellent optoelectrical properties of the perovskite absorbers, are poorly understood. In this paper, we have explored synchrotron-based soft X-ray characterization as an effective technique for the compositional analysis of MHP thin films. Most synchrotron-based studies used for investigating MHPs so far are based on hard X-rays (5–10 keV) which include various absorption edges (Pb L-edge, I L-edge, Br K-edge, etc.) but are not suited for the analysis of the organic component in these materials. In order to be sensitive to a maximum number of elements, we have employed soft X-ray-based scanning transmission X-ray microscopy (STXM) as a spectro-microscopy technique for the characterization of MHPs. We examined its sensitivity to iodine and organic components, aging, or oxidation by-products in MHPs to make sure that our suggested method is suitable for studying MHPs. Furthermore, methylammonium triiodide with different deposition ratios of PbI_2 and $\text{CH}_3\text{NH}_3\text{I}$ (MAI), and different thicknesses, were characterized for chemical inhomogeneity at the nanoscale by STXM. Through these measurements, we demonstrate that STXM is very sensitive to chemical composition and homogeneity in MHPs. Thus, we highlight the utility of STXM for an in-depth analysis of physical and chemical phenomena in PSCs.

Organic–inorganic metal halide perovskites (MHPs) with ABX_3 structure have been regarded as promising materials for various optoelectronic applications over the past few years. MHPs have remarkable optoelectronic properties, including a tunable bandgap, long charge carrier lifetimes, a small exciton binding energy, and a high absorption coefficient^{1–3}. These properties are well suited for electrical and optical applications such as photovoltaics, light-emitting diodes, resistive-switching memory devices, and field-effect transistors^{4–7}. Among various applications, perovskite-based solar cells (PSCs) conspicuously have achieved a certified power conversion efficiency (PCE) of 25.5% within ten years of development, comparable to that of monocrystalline silicon based solar cells⁸.

However, one of the challenging issues that hinders successful commercialization of PSCs is still low operational stability. The mechanisms of degradation in a bulk perovskite layer and interfaces between perovskite and transport layers are caused by various factors of the operational environment such as oxygen, moisture, heat, light, and electrical field. To improve the stability, many researchers have tried to investigate them by different techniques and have observed the degradation phenomena under various conditions^{9–11}. However, understanding of the intrinsic degradation attributed to light, heat, and electrical fields still remains vague due to the complexity of these materials. For a better understanding of the detailed mechanisms of the phenomena, advanced analytical techniques are needed, which enable investigation of nanoscale chemical composition with high sensitivity

¹Synchrotron SOLEIL, L'Orme Des Merisiers Saint-Aubin, BP 48, 91192 Gif-sur-Yvette Cedex, France. ²CEA, CNRS, NIMBE, LICSEN, Université Paris-Saclay, 91191 Gif-sur-Yvette, France. ³LPICM, CNRS, Ecole Polytechnique, Institut Polytechnique de Paris, Route de Saclay, 91128 Palaiseau, France. ⁴CNRS, Institut Photovoltaïque d'Île de France (IPVF), UMR 9006, 18, Boulevard Thomas Gobert, 91120 Palaiseau, France. ✉email: sufal.swaraj@synchrotron-soleil.fr

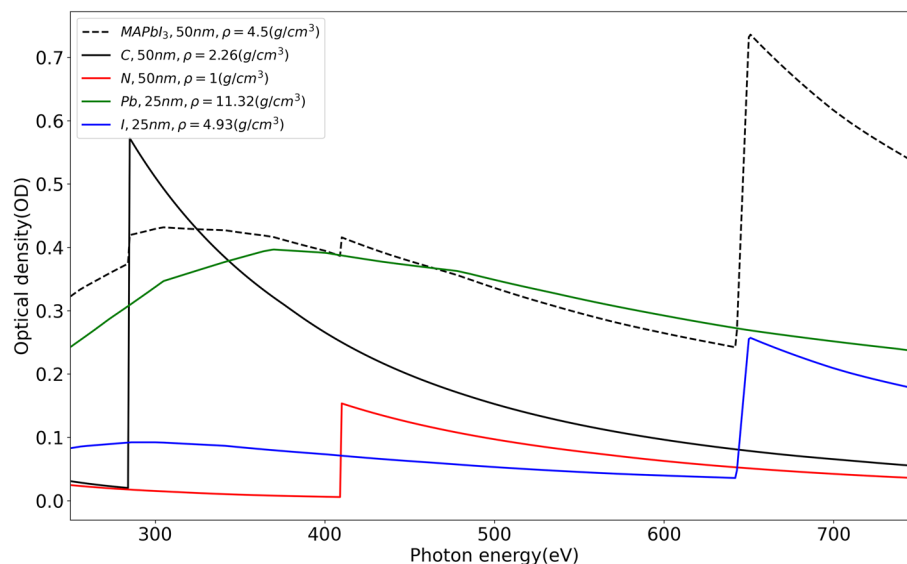


Figure 1. Simulations for X-ray absorption spectrum of MAPbI₃ (top) and the different perovskite elements including C, N, Pb and I (bottom) in soft X-ray region using aXis2000²⁷.

for every element. Combining spatially resolved chemical analysis with techniques probing material's local optoelectronic properties is one way to understand the link between composition and performance of PSCs.

Since the advent of PSCs, characterizations based on synchrotron radiation have been employed to deepen our understanding of the correlation between non-stoichiometry and halide migration. Synchrotron radiation sources can produce highly collimated monochromatic X-rays with high flux. Owing to these beam characteristics, structural, chemical, and physical properties can be investigated across multiple length scales¹². In many instances, there have been applications of synchrotron radiation-based characterization, which has provided decisive answers to the physico-chemical mechanisms in MHPs that cannot be revealed by laboratory-based characterization. Adhyaksa et al.¹³ employed synchrotron-based nanoprobe X-ray diffraction (nano-XRD) to examine the effect of grain-boundaries in MHP and verified that the disordered region at grain boundaries is amorphous giving rise to locally bright photoluminescence intensity, which is quite an anomalous grain boundary behavior. Li et al.¹⁴ also used nano-XRD to study the influence of nanoscale residual strains on CsPbBr₃ thin film on the stability of perovskite crystal structure and photoluminescence (PL). Luo et al.¹⁵ could observe nanoscale heterogeneous distribution of chlorine/iodine mass ratio in MAPb(I_{1-x}Cl_x)₃ according to the method of synthesis and deposition using synchrotron-based nano X-ray fluorescence (XRF) microscopy. With the same technique they observed in CH₃NH₃PbBr₃ an increase of local bromine/lead atomic ratio under an applied electric field correlated with a local increase of photoluminescence. Furthermore, Stuckelberger et al. carried out nano-XRF with X-ray beam-induced current (XBIC) on mesoscopic MAPbI₃ solar cells. The combined XRF/XBIC measurements give valuable correlation between elemental distributions and charge collection efficiency¹⁶. Philippe et al.¹⁷ demonstrated the depth-dependent distribution of Cs and Rb and the role of the distributions in mixed-cation RbCsMAFA perovskite with hard X-ray photoelectron spectroscopy (HAXPES). In addition, Sekimoto et al.¹⁸ performed HAXPES to investigate the effect of hole transport layer (HTL) on light-induced degradation and assessed the accumulation of iodine and lead at the interface between perovskite film and HTL.

The majority of these synchrotron-based studies of MHPs have employed hard X-rays in the range 5–10 keV primarily because the interesting X-ray absorption edges related to some of the elements (Pb L-edge, I L-edge, Br K-edge, etc.) in MHP compounds lie in the hard X-ray regime^{17,19–21}. On the other hand, the soft X-ray regime does include the inner shell X-ray absorption edges of carbon and nitrogen (C K-edge and N K-edge) and the outer shell X-ray absorption edges of Pb and I (Pb N-edge and I M-edge) in the same regime contributing in the form of a strong background (Fig. 1). While soft X-rays remain challenging for the investigation of MHP compounds, it does provide the opportunity to investigate the organic component of MHPs in conjunction with the lead halide component.

In principle, this energy range could be used to investigate changes in the spectroscopic fine structure of the C K-edge at 284 eV and the N K-edge at 405.5 eV, to explore the chemical changes at interfaces between perovskite active layers and charge transport layers²² as well as ion migration in the perovskite film itself²³. We would like to point out that the I M absorption edge as tabulated in the Henke database²⁴ was found to be 20 eV below (619 eV) that found in our studies (~640 eV). As pointed out by Hansen²⁵ and Comes et al.²⁶, the tabulated values need further investigation. In order to overcome this discrepancy, we have blue-shifted the iodine M-edge tabulated value by 20 eV in the range of (620–700 eV) before simulating the spectra using the software aXis2000²⁷. The simulation parameters used are mentioned in the Fig. 1.

In this paper, we have used scanning transmission X-ray microscopy (STXM) measurements in the soft X-ray regime (270–800 eV) to demonstrate the possibility of spectroscopy as well as microscopy using soft X-rays (soft

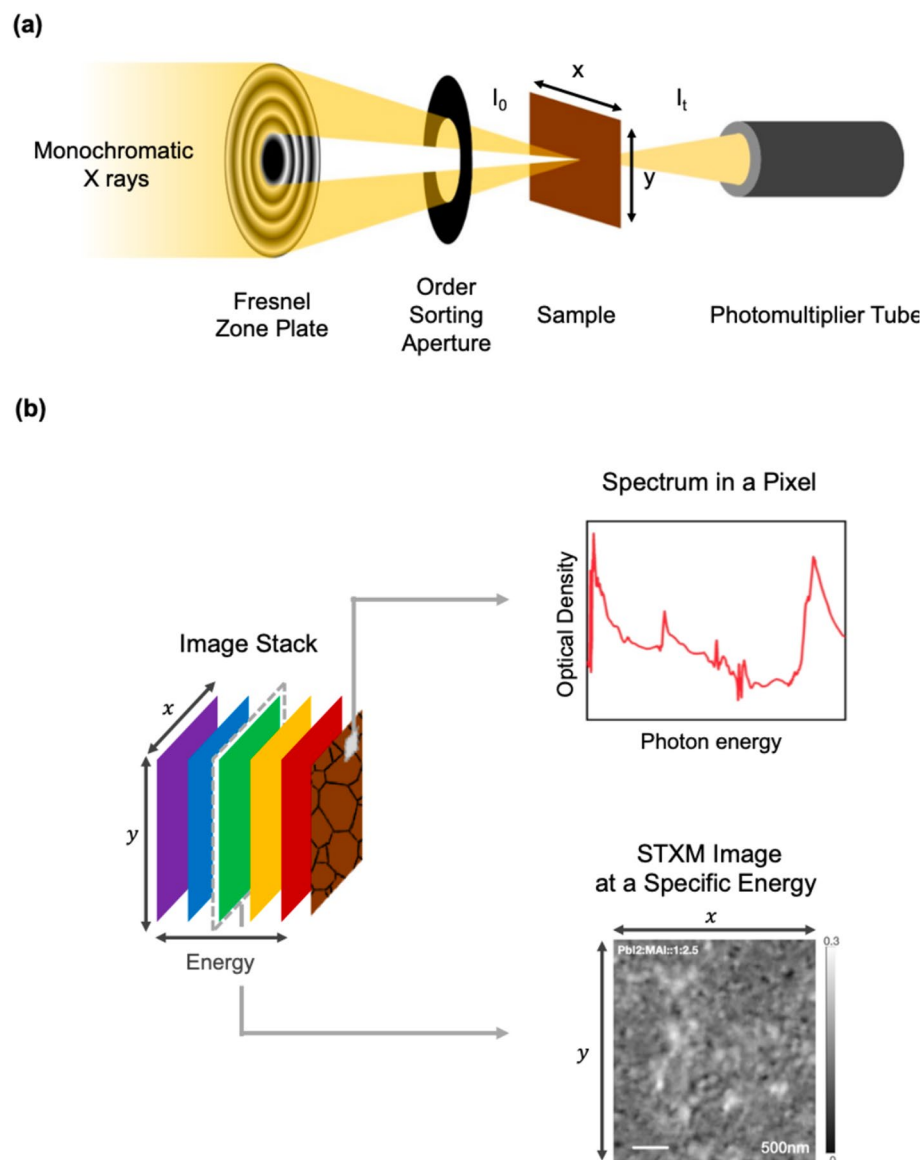


Figure 2. (a) Experimental set-up for scanning transmission X-ray microscopy (STXM). (b) Illustration of data acquired by STXM, including spatially resolved spectra (spectrum in a particular pixel) and STXM image at a specific energy.

X-ray spectro-microscopy). STXM is an experimental technique (see Fig. 2 for schematics) based on X-ray absorption spectroscopy (XAS). In most of the STXM studies the “fine structure” near the absorption edge is specifically exploited. This is referred as near edge X-ray absorption fine structure (NEXAFS) spectroscopy or X-ray absorption fine structure (XAFS). In XAS, the absorption spectra are usually represented in terms of optical density (OD) given as $\ln\left(\frac{I_0}{I}\right)$ where I_0 is the incident photon flux and I is transmitted photon flux. I and I_0 (and hence OD) are correlated to the mass absorption coefficient ($\mu(E)$), density (ρ), and thickness (t) from the Beer-Lambert law as shown in Eq. (1).

$$I = I_0 e^{-\mu(E)\rho t} \quad (1)$$

$$\ln\left(\frac{I_0}{I}\right) = OD = \mu(E)\rho t \quad (2)$$

This spectro-microscopy technique allows us to obtain quantitative chemical composition maps of the bulk of materials with a high spatial resolution (~ 30 nm in this study).

In order to demonstrate the utility of soft X-ray STXM for the characterization of MHPs, we have verified its sensitivity to (a) various elements/components that are contained in MHPs and (b) various aging or oxidation

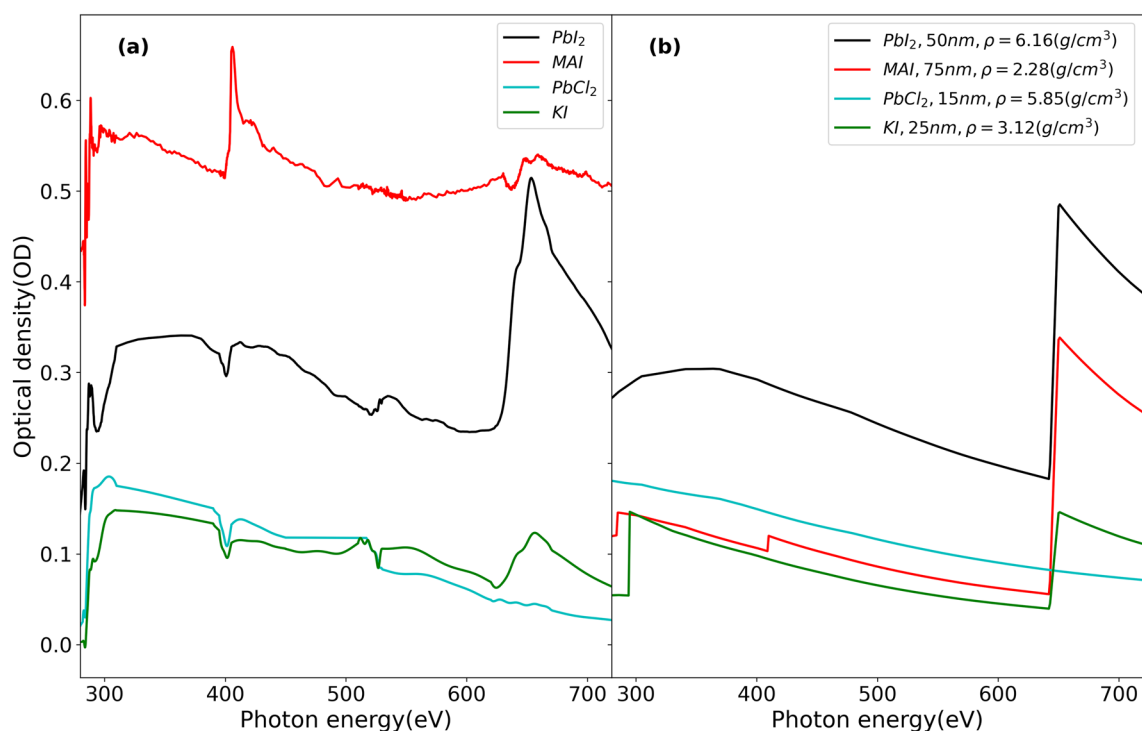


Figure 3. (a) Experimental XAS spectra (b) Simulated spectra²⁷ of PbI_2 , MAI, PbCl_2 and KI in the range of 280–720 eV. Simulation parameters are mentioned in legend of (b).

by-products. To achieve the above objectives, the following samples were prepared: methylammonium lead iodide ($\text{CH}_3\text{NH}_3\text{PbI}_3$, MAPbI_3), lead iodide (PbI_2), methylammonium iodide ($\text{CH}_3\text{NH}_3\text{I}$, MAI), lead chloride (PbCl_2), potassium iodide (KI), and lead oxide (PbO). PbI_2 and MAI are major components of the MHP, MAPbI_3 . PbCl_2 and KI films are used as a comparison standard to test whether STXM is sensitive to C, N, Pb and I in this energy range. The X-ray absorption spectrum of PbO obtained from STXM is measured to identify the by-product issued from the degradation of MAPbI_3 (MHP in this study). Furthermore, MAPbI_3 samples with different PbI_2 :MAI ratios and of various thicknesses were prepared and compared to highlight the chemical and thickness sensitivity of STXM.

Results and discussions

Identification of components and by-products. Figure 3a shows NEXAFS spectra of PbI_2 , MAI, PbCl_2 , and KI, covering the C K-edge, N K-edge, O K-edge, I M-edge, and Pb N-edge along with the corresponding simulated spectra (Fig. 3b) of appropriate thickness. In the spectrum of PbI_2 , a broad Pb N-edge in the form of a ‘bump’ can be observed at around 370 eV. A strong I M-edge at 631 eV is also observed. The spectrum of MAI presents three edges at ~285 eV, ~395 eV and ~631 eV that correspond to the C K-edge, N K-edge and I M-edge, respectively. In the case of KI, the I M-edge at ~631 eV and K L-edge at ~295 eV are observed in the spectra. The spectra of PbCl_2 shows a trend similar to the simulated spectrum but presents variations at C, N, and O edge energy positions that most likely correspond to contamination or incorrect normalization. In comparison to the simulated spectrum, the experimental MAI spectrum appears with an inhibited I M-edge. This fact is supported by energy-dispersive X-ray spectroscopy (EDX) analysis of MAI films (Fig. S1 and Table S1), wherein the iodine atomic percent was observed to be small compared with those of carbon and nitrogen. An offset in the OD scale can also be observed in the case of MAI spectra compared to the simulated spectra. We speculate that this could be due to either contamination of the MAI film or radiation-related damage. This would be investigated in further studies.

In order to investigate physical and chemical phenomena in PSCs using STXM, we need to identify not only the components of the perovskite but also potential by-products from the film processing and degradation processes. For example, in the study of stability in MAPbI_3 , the major by-products of aged perovskite are PbI_2 and PbO ^{28–32}. Their corresponding XAS spectra are shown in Fig. 4. We confirm that PbI_2 and PbO have broad Pb N-edge at 370 eV in common. However, the I M-edge only exists in the OD spectrum of PbI_2 , whereas the PbO spectrum is relatively flat at 370 eV. Furthermore, in the OD spectrum of PbO , we find a prominent O K-edge at 543 eV. Presence of oxygen moieties can also be detected in the PbI_2 spectra, highlighting the sensitivity of these techniques to degradation by products of aging in air. These two results in Figs. 3 and 4 confirm that each component of MHPs such as MAI and PbI_2 can be detected and distinguished from other components. The absorption spectra of KI (pure I, no Pb) and PbCl_2 (only Pb, no I) in Fig. 3 show that we are able to reliably attribute I and Pb contributions to spectra of films that contain both elements. Similarly, the absorption spectra of PbI_2 and PbO

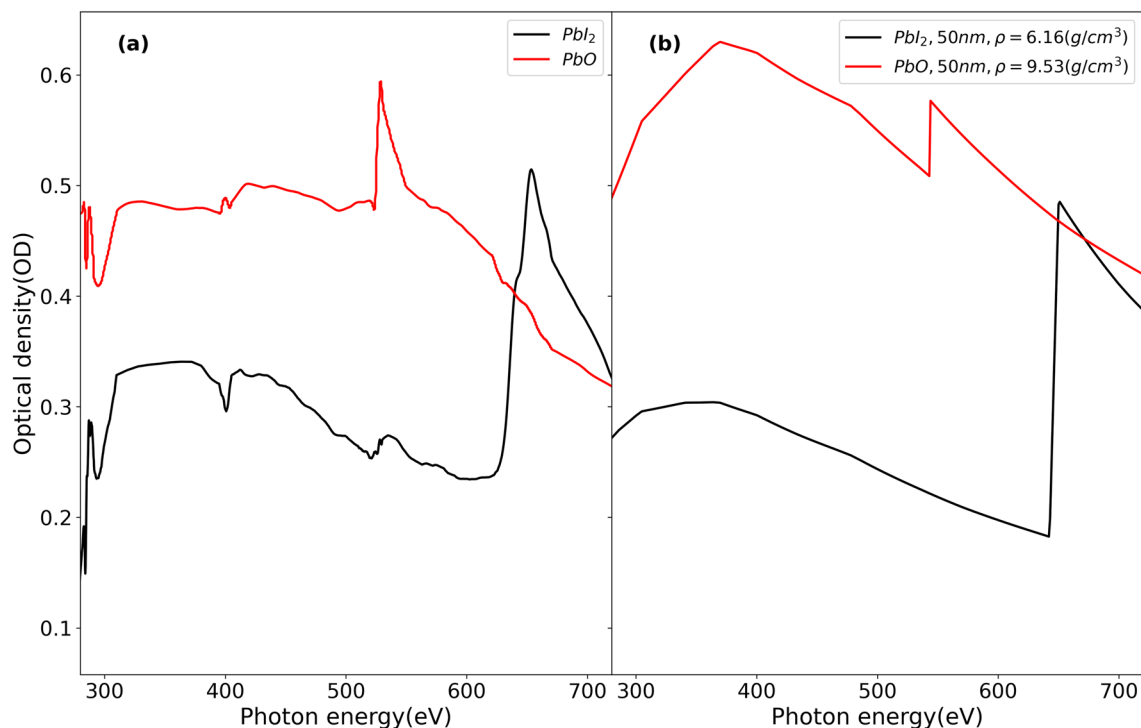


Figure 4. (a) Experimental NEXAFS spectra and (b) Simulated spectra²⁷ of PbI_2 , and PbO in the range of 280–720 eV. Simulation parameters are mentioned in legend of (b).

presented in Fig. 4 are compared to their simulated spectra of appropriate thickness to assure the reliable detection of these by-products of aged MAPbI_3 in soft X-ray region. The low energy anomaly observed in PbO in the C K-edge region (280–310 eV) in Fig. 4a could be due to bad normalization or beamline optics contamination.

Characterization of MAPbI_3 . In general, MAPbI_3 , one of MHPs, is formed by the reaction of PbI_2 and MAI. The large grain size with grain boundaries in MAPbI_3 are generally considered to result in high photovoltaic performance with low recombination rate^{33,34}. The relative ratio of PbI_2 to MAI in vacuum deposition process considerably affects the grain size in MAPbI_3 . Figure 5 illustrates the use of STXM to characterize MAPbI_3 with different PbI_2 to MAI ratios. STXM images of MAPbI_3 with PbI_2 to MAI ratio of 1:0.5, 1:1 and 1:2.5 are shown in Fig. 5a–c, respectively. A horizontal line profile taken from the center of the image in each case is also presented. Similar to other studies^{35,36}, we observe that as the amount of MAI increases, the grain size increases. The increase in grain size can be interpreted from the line profiles and also from Fig. 5a–c by the increase in domain size (dimension of regions of similar intensity) and decrease in image “roughness”. Figure 5d indicates spectra of MAPbI_3 with the different ratios that cover, C K-edge, N K-edge, O K-edge, I M-edge and Pb N-edge energy range. The overall difference in the OD of the three spectra, especially that with the PbI_2 to MAI ratio of 1:1 arises from the difference in film thickness. In order to compare the spectra and to obtain a semi-quantitative (relative) measure of organic molecules, the integrated area under the edge-normalized C K-edge NEXAFS spectra (Fig. 5e), the edge-jump in N K-edge NEXAFS spectra (Fig. 5f) and the integrated area under the edge-normalized I M-edge NEXAFS spectra (Fig. 5e) are presented in Table 1. In each case a linear background was removed before processing. Investigations related to semi-quantitative studies using NEXAFS spectra often use edge-normalized spectra^{37–40}. The integrated area under both the C K-edge spectra and the I M-edge spectra as well as the edge jump in N K-edge spectra (Table 1) can be clearly seen to be increasing for samples with higher MAI content.

Using STXM, we confirm that as the contents of MAI, which reacts with PbI_2 , increases, the “higher quality” of MAPbI_3 films with larger grain size can be obtained. These results are coherent with lab-based characterization, including scanning electron microscopy (SEM) and EDX (Fig. S1 and Table S1). Here we would like to point out two major differences between EDX and STXM as characterization tools. The possibility of identifying chemical states (oxidation states, chemical bonds etc.) by STXM as compared to EDX is one of the most important aspects (discussed later for this study). In addition, while EDX measurements can be considered relatively fast, it is also well known that sample damage is much more prominent in EDX as compared to STXM measurements.

Figure 6 shows XAS obtained from STXM measurements of MAPbI_3 with optimized ratio (PbI_2 :MAI = 1:2.5) and two different thicknesses. The two spectra of MAPbI_3 with 25 nm and 50 nm thicknesses have similar features with the expected difference in OD that corresponds to the difference in thickness. The clearly observed essential absorption edges (C K-edge, N K-edge, O K-edge and I M-edge) further confirm the reliability of STXM to detect thickness variations in MAPbI_3 films with similar chemical composition. The sharp drop observed in the C K-edge region is possibly due to incorrect normalization in this region or due to carbon contamination

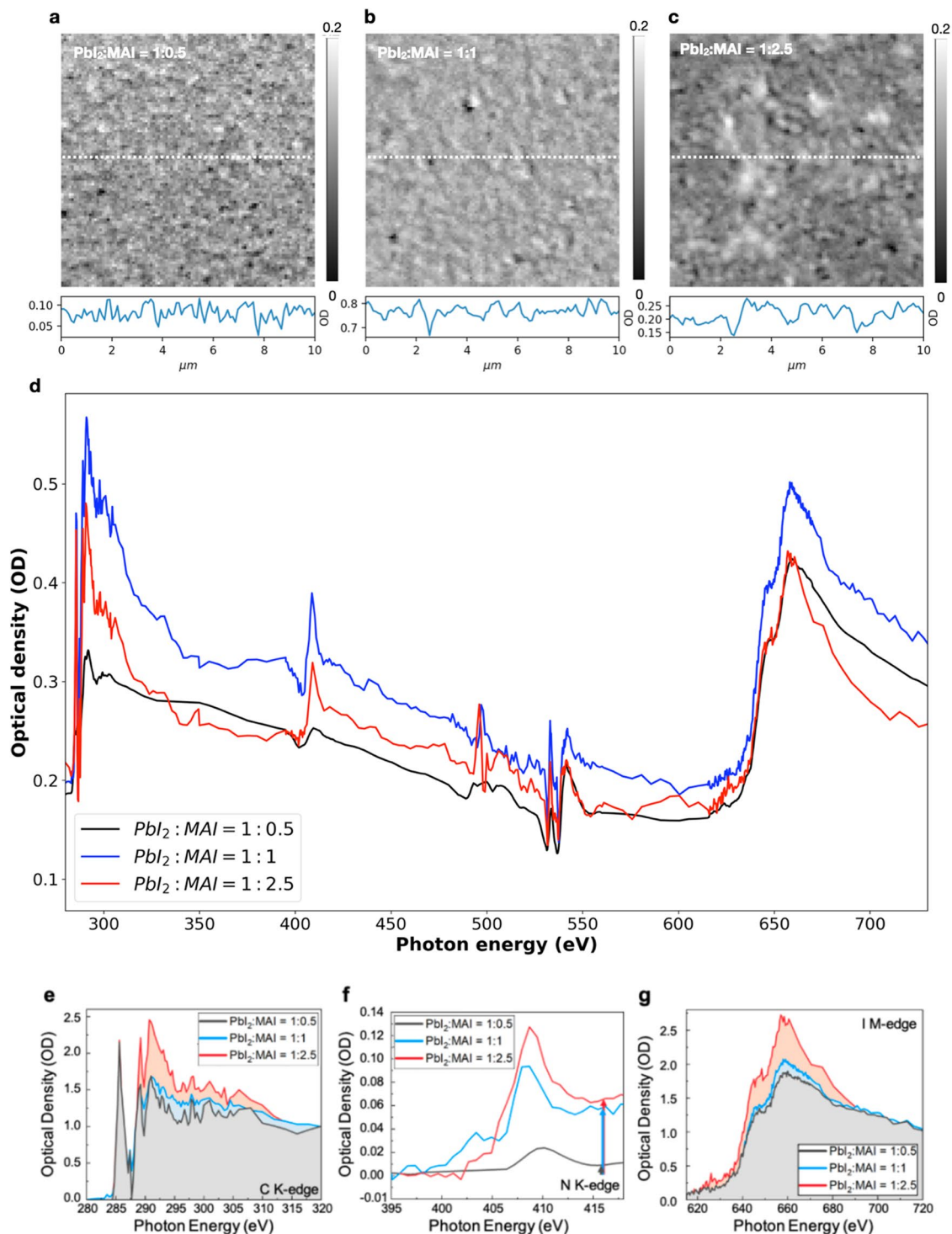


Figure 5. STXM images and spectra of MAPbI₃ with different PbI₂ to MAI ratios. STXM images and line profile (taken from white dotted line in the image) at 662 eV with the ratio of (a) 1:0.5 (b) 1:1 (c) 1:2.5, (d) NEXAFS spectra in the entire energy region (280–730 eV), (e) edge normalized C K-edge, (f) N K-edge, and (g) I M-edge region of MAPbI₃ with different PbI₂ to MAI ratios. The shaded regions in (e) and (g) indicate the integrated C K-edge spectra and I M-edge spectra, and the arrows in (f) represents the N K-edge jumps.

on the beamline optics during these particular measurements. We do note that the OD does not show a perfect proportionality to thickness changes in Fig. 6. We suspect a larger error in measurements of lower thicknesses during deposition.

PbI ₂ : MAI deposition ratio in MAPbI ₃	Area under the edge-normalized C K-edge NEXAFS spectra (OD ²)	Edge jump (OD) in N K-edge NEXAFS	Area under the edge-normalized I M-edge NEXAFS spectra (OD ²)
1:0.5	35	0.008	149
1:1	39	0.058	153
1:2.5	45	0.065	169

Table 1. Integrated area under the edge-normalized C K-edge NEXAFS, the edge jump in N K-edge NEXAFS spectra and the integrated area under the edge-normalized I M-edge of various MAPbI₃ samples.

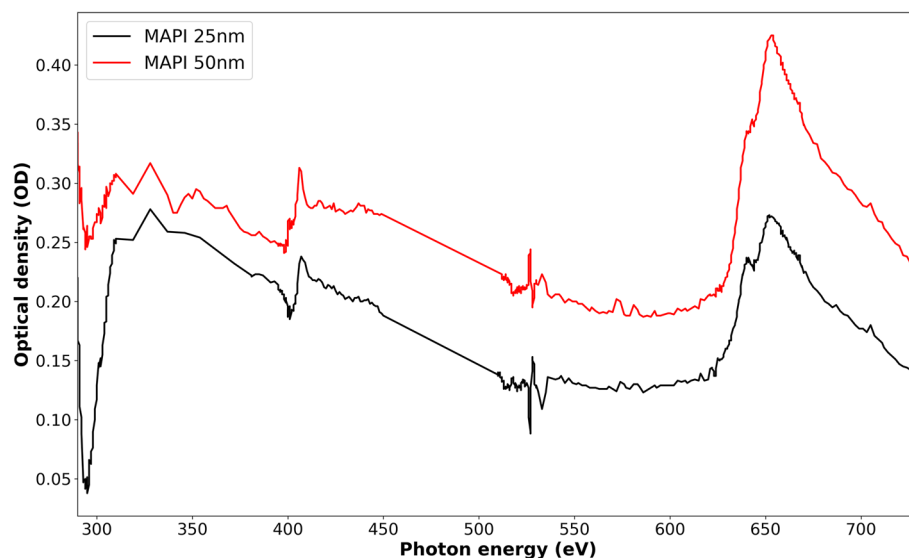


Figure 6. XAS spectra of MAPbI₃ with optimized PbI₂ to MAI ratio (1:2.5) and two different thicknesses of 25 nm and 50 nm.

Inhomogeneous morphology was observed in MAPbI₃ with 1:2.5, and consequently a spatially resolved analysis was performed to investigate the chemical homogeneity in MAPbI₃. Figure 7a shows a STXM image of MAPbI₃ with the ratio of 1:2.5 at 662 eV. Figure 7b–d indicate the C, N, and I cluster maps of MAPbI₃ for the same region obtained from cluster analysis performed by the software MANTIS⁴¹. Figure 7e–g are corresponding background removed XAS spectra for different clusters represented in the cluster maps. In all the cases, the spectral shape according to the clusters can be considered similar, and the variation observed arises only from the overall intensity. The intensities of spectra arising from clusters 1 and 2 are almost identical but vary in each case with the spectra of cluster 3. Considering the similarity in maps and spectra of clusters 1 and 2, the morphological and chemical homogeneities are obvious. The pre-edge spectral features A (286 eV) and B (~287.5 eV) in C K-edge spectra (Fig. 7e) are related to C1s → π*(C=C) and C1s → π*(C=O) transitions respectively⁴¹. In this first study we speculate that these features indicate the presence of oxidation and/or degradation products due to the samples being exposed to air. The feature C (~289.5 eV) and the shoulder just below it most likely arise from C1s → σ*(C-H)/Rydberg peak⁴². Higher energy features in C K-edge (>290 eV) and in N K-edge (>405 eV) correspond to C1s → σ* and N1s → σ* transitions. The sensitivity of these two absorption edges along with Oxygen K-edge (not fully utilized in this study due to beamtime constraints) to chemical moieties is well known⁴³ and spectral features in these edges could be utilized for identification of various functional groups in different MHP's.

The increase in OD of cluster 3 spectra indicates that while the chemical homogeneity persists on the grain, the thickness is higher. These cluster maps obtained from STXM provide spatially resolved spectra of not only the halide component but also organic components. They could be valuable in accessing chemical changes that could arise from aging or different kinds of stress.

Conclusion

In this study, we highlight the utility of STXM in the soft X-ray regime to characterize organic–inorganic MHPs. Compared with hard X-ray based characterization, soft X-ray based characterization allows investigation of X-ray absorption edges of both inorganic (especially I) and organic (C and N) components.

We have presented the XAS spectra of MAI, PbI₂, and PbCl₂ and KI to examine the sensitivity of components in MAPbI₃ including C, N, Pb in the soft X-ray energy range. The measured spectra accord well with the simulated spectra except for MAI. The difference between experimental and simulation spectra in MAI is caused by the film of MAI with low concentration of iodine. The fact was supported by EDX results. In addition, XAS spectra of PbO, typical by-product formed by oxidation, were measured and found to have expected features.

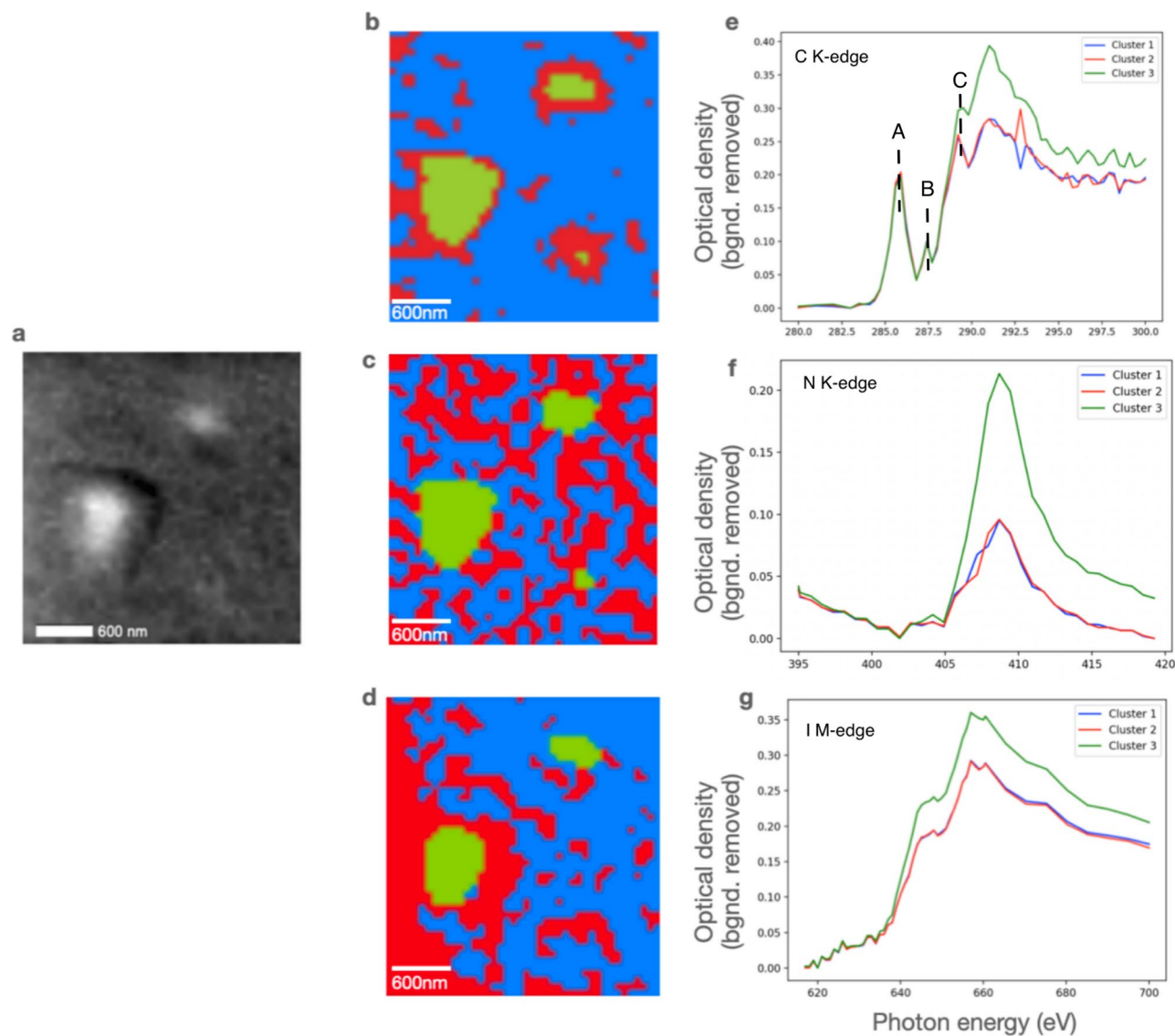


Figure 7. (a) STXM image at 662 eV of MAPbI₃ with PbI₂ to MAI ratio of 1:2.5. Cluster images of MAPbI₃ in the (b) C K-edge, (c) N K-edge, and (d) I M-edge region, Corresponding average cluster XAS spectra of cluster analysis in the (e) C K-edge, (f) N K-edge, and (g) I M-edge region (Color of each spectrum corresponds to color of each cluster on the map).

Through these measurements, we have demonstrated that soft X-ray absorption spectra are sensitive to various chemical components MHP's and its degradation by products.

Furthermore, taking advantage of the spatial sensitivity of STXM, MAPbI₃ with different deposition ratios of PbI₂ and MAI, and the thickness of MAPbI₃ film and its homogeneity were characterized in detail. We observed that the area under the edge-normalized C K-edge XAS spectra and the edge jump in N K-edge XAS spectra increases as the amount of MAI increases. In addition, we have shown that the OD is proportional to the thickness of MAPbI₃ with an optimized deposition ratio of 1:2.5, which follows the Beer-Lambert law. In the chemical homogeneity test, the shapes of XAS spectra in the three different nanoscale clusters were found to be the same. Changes in film thickness due to grain formation manifests itself in the form of overall increase in intensity and edge-jump. The above-mentioned measurements reveal that STXM enables study of morphological and chemical homogeneity of MHPs, on the nanometer scale.

We anticipate that STXM measurements along with further detailed data processing that includes the analysis of the near edge “fine structure” will provide detailed chemical information of halide perovskite layer and interfaces between perovskite and charge transport layers in perovskite solar cells at the nanoscale. Furthermore, in-operando STXM using particular sample environments such as electrical bias and heating, etc., will be the next obvious steps that could lead to crucial clues for the mechanism of operational degradation of perovskite solar cells.

Experimental section/methods

Sample preparation. All samples including PbO (Sigma Aldrich, 99%), PbCl₂ (Alpha Aesar, ultra-dry, 99.99%), KI (Sigma Aldrich, ≥99%), MAI (Greatcell Solar, >99.99%), PbI₂ (Alpha Aesar, ultra-dry, 99.999%) and MAPbI₃ are prepared onto a Si₃N₄ window (50 nm thicknesses, frame size of 5 × 5 mm², Norcada Inc., Edmonton, Canada). PbO, PbCl₂, KI and MAI are prepared by the wet process. On the other hand, PbI₂ and MAPbI₃ are based on the dry process. The 0.05 M of PbO was dissolved in deionized water. Each PbCl₂ and KI solution was prepared with 0.025 g ml⁻¹ concentration in *N,N*-Dimethylformamide (DMF, Sigma Aldrich, anhydrous, 99.8%). MAI solution was prepared by dissolving MAI into DMF with a concentration of 0.125 M. All PbO, PbCl₂, KI, and MAI films are spin-coated at 3000 rpm in an N₂ environment. PbI₂ with the thickness of 50 nm was prepared by vacuum deposition. PbI₂ was sublimated in a vacuum chamber at 300 °C, and the rate of PbI₂ was 1 Ås⁻¹. During the deposition, the vacuum level was 1.6 × 10⁻⁶ mbar. MAPbI₃ of 25 nm and 50 nm were deposited by co-evaporation of PbI₂ and MAI. The vacuum chamber was evacuated to the same pressure of 1.6 × 10⁻⁶ mbar. The temperature of PbI₂ and MAI were fixed at 300 °C and 180 °C. A pre-calibrated quartz crystal microbalance (QCM) sensor was used to monitor the rate of PbI₂ and MAI and the thickness of MAPbI₃. The deposition rate of PbI₂ and MAI were 1 Ås⁻¹ and 2.5 Ås⁻¹, respectively.

STXM measurements. STXM measurements were performed at the HERMES beamline of synchrotron SOLEIL. The details of the beamline are mentioned in Fig. 2 and elsewhere⁴⁴. A Fresnel zone plate of 25 nm outer zone width (Applied Nanotools Inc., Canada) was used to focus the monochromatic X-rays to a spot size of (30 nm). The transmitted X-rays are detected by a photomultiplier tube (PMT) after being converted to visible photons by the phosphorous screen. The sample is raster scanned across the X-ray spot with the help of an interferometrically stabilized piezoelectric stage. The following protocol is recommended in order to perform studies in a reproducible fashion: (a) clean beamline optics is essential for investigating organic species, (b) if possible, in order to avoid contamination and degradation of the samples during transportation, a vacuum environment or isolated environment with minimum exposure to light is recommended. Spectral data presented in this communication (Figs. 3, 4 and 5) are primarily obtained from a stack of very low-resolution images measured at a range of predetermined energies. Each spectral point in these cases is obtained by integrating over each image. The energy range investigated for each sample is from 270 to 750 eV covering C K-edge, N K-edge, O K-edge, I M-edge, and Pb N-edge. To avoid any mechanical drift and focusing issues due to long range travel of the zone plate, we had split the scans into four partially overlapping sections from 270 to 390 eV, 370 to 450 eV, 430 to 570 eV and 550 to 750 eV. Focus corrections and beam alignment were performed between each chosen energy range. High spectral resolution (0.1 eV energy step) was used near the absorption edges of C, N, O, and I. In the intermediate energy ranges, an energy step of up to 5 eV was used. Before real measurement, a radiation damage study is recommended. In order to obtain spatially resolved spectra, energy stacks were obtained over an area of 2 × 2 microns by raster scanning the sample with a step size of 30 nm with the same energy definition as described above.

Data availability

The data generated during and/or analysed during the current study are available from the corresponding author on reasonable request.

Received: 14 December 2021; Accepted: 25 February 2022

Published online: 16 March 2022

References

- Mitzi, D. B., Feild, C. A., Schlesinger, Z. & Laibowitz, R. B. Transport, optical, and magnetic properties of the conducting halide perovskite CH₃NH₃Snl₃. *J. Solid State Chem.* **114**, 159 (1995).
- Stranks, S. D. *et al.* Electron-hole diffusion lengths exceeding 1 micrometer in an organometal trihalide perovskite absorber. *Science* **342**, 341 (2013).
- Noh, J. H., Im, S. H., Heo, J. H., Mandal, T. N. & Il Seok, S. Chemical management for colorful, efficient, and stable inorganic-organic hybrid nanostructured solar cells. *Nano Lett.* **13**, 1764 (2013).
- Saliba, M., Correa-Baena, J. P., Grätzel, M., Hagfeldt, A. & Abate, A. Perovskite solar cells: From the atomic level to film quality and device performance. *Angew. Chemie. Int. Ed.* **57**, 2554 (2018).
- Solari, S. F., Kumar, S., Jagielski, J. & Shih, C. Monochromatic LEDs based on perovskite quantum dots: Opportunities and challenges. *J. Soc. Inf. Display* **27**(11), 667–678. <https://doi.org/10.1002/jsid.834> (2019).
- Yoo, E. J. *et al.* Resistive switching behavior in organic-inorganic hybrid CH₃NH₃PbI₃-xCl_x Perovskite for resistive random access memory devices. *Adv. Mater.* **27**, 6170 (2015).
- Haque, F., Hoang, N. T. T., Ji, J. & Mativenga, M. Effect of precursor composition on ion migration in hybrid Perovskite CH₃NH₃PbI₃. *IEEE Electron Device Lett.* **40**, 1756 (2019).
- “NREL efficiency chart,” can be found under <https://www.nrel.gov/pv/cell-efficiency.html>
- Jung, H. J. *et al.* Stability of halide Perovskite solar cell devices: In situ observation of oxygen diffusion under biasing. *Adv. Mater.* **30**, 1802769 (2018).
- Uddin, A., Upama, M. B., Yi, H. & Duan, L. Encapsulation of organic and Perovskite solar cells: A review. *Coatings* **9**, 65 (2019).
- Akbulatov, A. F. *et al.* Effect of electron-transport material on light-induced degradation of inverted planar junction Perovskite solar cells. *Adv. Energy Mater.* **7**, 1 (2017).
- Sedigh Rahimabadi, P., Khodaei, M. & Koswattage, K. R. Review on applications of synchrotron-based X-ray techniques in materials characterization. *X-Ray Spectrom.* **49**, 348 (2020).
- Adhyaksa, G. W. P. *et al.* Understanding detrimental and beneficial grain boundary effects in halide Perovskites. *Adv. Mater.* **30**, 1804792 (2018).
- Li, X., Luo, Y., Holt, M. V., Cai, Z. & Fenning, D. P. Residual nanoscale strain in Cesium lead bromide Perovskite reduces stability and shifts local luminescence. *Chem. Mater.* **31**, 2778 (2019).

15. Luo, Y. *et al.* Spatially heterogeneous chlorine incorporation in organic-inorganic Perovskite solar cells. *Chem. Mater.* **28**, 6536 (2016).
16. Stuckelberger, M. E. *et al.* Effects of X-rays on Perovskite solar cells. *J. Phys. Chem. C* **124**, 17949 (2020).
17. Philippe, B. *et al.* Metal-doped lead halide Perovskites: SYNTHESIS, properties, and optoelectronic applications. *Chem. Mater.* **29**, 3589 (2017).
18. Sekimoto, T. *et al.* Influence of a hole-transport layer on light-induced degradation of mixed organic-inorganic halide Perovskite solar cells. *ACS Appl. Energy Mater.* **2**, 5039 (2019).
19. Santomauro, F. G. *et al.* Localized holes and delocalized electrons in photoexcited inorganic perovskites: Watching each atomic actor by picosecond X-ray absorption spectroscopy. *Struct. Dyn.* **4**, 044002 (2017).
20. Vorwerk, C. *et al.* Exciton-dominated core-level absorption spectra of hybrid organic-inorganic lead halide Perovskites. *J. Phys. Chem. Lett.* **2018**, 9 (1852).
21. Kodur, M. *et al.* X-ray microscopy of halide Perovskites: Techniques, applications, and prospects. *Adv. Energy Mater.* **10**, 1 (2020).
22. Wheeler, L. M. *et al.* Targeted ligand-exchange chemistry on cesium lead halide Perovskite quantum dots for high-efficiency photovoltaics. *J. Am. Chem. Soc.* **140**, 10504 (2018).
23. Lee, H. *et al.* Effect of halide ion migration on the electrical properties of methylammonium lead tri-iodide Perovskite solar cells. *J. Phys. Chem. C* **123**, 17728 (2019).
24. Henke, B. L., Gullikson, E. M. & Davis, J. C. X-Ray interactions: Photoabsorption, scattering, transmission, and reflection at E = 50–30,000 eV, Z = 1–92. *At. Data Nucl. Data Tables* **54**, 181 (1993).
25. Hansen, H. "Die Schwächung monochromatischer Röntgenstrahlen in flüssigem und gasförmigem CS₂, CH₂Cl₂ und C₂H₅Br sowie in gasförmigem CH₃ zwischen 0,1623 und 1,933 Å. *Ann. Phys.* **427**, 524 (1939).
26. Comes, F. J., Haensel, R., Nielsen, U. & Schwarz, W. H. E. Spectra of the xenon fluorides XeF₂ and XeF₄ in the far uv region. *J. Chem. Phys.* **58**, 516 (1973).
27. aXis2000, available freely at <http://unicorn.chemistry.mcmaster.ca/axis/aXis2000-download.html>
28. Niu, G. *et al.* Study on the stability of CH₃NH₃PbI₃ films and the effect of post-modification by aluminum oxide in all-solid-state hybrid solar cells. *J. Mater. Chem. A* **2**, 705 (2014).
29. Kye, Y. H., Yu, C. J., Jong, U. G., Chen, Y. & Walsh, A. Critical role of water in defect aggregation and chemical degradation of Perovskite solar cells. *J. Phys. Chem. Lett.* **9**, 2196 (2018).
30. Yang, J. *et al.* Oxygen- and water-induced energetics degradation in organometal halide perovskites. *ACS Appl. Mater. Interfaces* **10**, 16225 (2018).
31. Ouyang, Y. *et al.* Photo-oxidative degradation of methylammonium lead iodide perovskite: mechanism and protection. *J. Mater. Chem. A* **7**, 2275 (2019).
32. Sun, Q. *et al.* Role of microstructure in oxygen induced photodegradation of methylammonium lead triiodide perovskite films. *Adv. Energy Mater.* **7**, 1700977 (2017).
33. Long, R., Liu, J. & Prezhdo, O. V. Unravelling the effects of grain boundary and chemical doping on electron-hole recombination in CH₃NH₃PbI₃ Perovskite by time-domain atomistic simulation. *J. Am. Chem. Soc.* **138**, 3884 (2016).
34. Nukunudompanich, M., Budiutama, G., Suzuki, K., Hasegawa, K. & Ihara, M. Dominant effect of the grain size of the MAPbI₃ perovskite controlled by the surface roughness of TiO₂ on the performance of perovskite solar cells. *CrystEngComm* **22**, 2718 (2020).
35. Yun, H.-S., Jang, Y. H. & Lee, D.-K. Characterization of Non-vacuum CuInSe₂ solar cells deposited on bilayer molybdenum. *Curr. Photovolt. Res.* **6**, 12 (2018).
36. Sanders, S. *et al.* Showerhead-assisted chemical vapor deposition of Perovskite films for solar cell application. *MRS Adv.* **5**, 385 (2020).
37. Swaraj, S. *et al.* Surface analysis of plasma-deposited polymer films, 1. *Plasma Process. Polym.* **1**, 134 (2004).
38. Swaraj, S., Oran, U., Lippitz, A., Friedrich, J. F. & Unger, W. E. S. Surface analysis of plasma deposited polymer films 5. *Plasma Process Polym.* **2**, 572 (2005).
39. Swaraj, S., Oran, U., Lippitz, A., Friedrich, J. F. & Unger, W. E. S. Aging of plasma-deposited films prepared from organic monomers. *Plasma Process. Polym.* **4**, S784 (2007).
40. Swaraj, S., Oran, U., Lippitz, A. & Unger, W. E. S. Surface chemical analysis of plasma-deposited copolymer films prepared from feed gas mixtures of ethylene or styrene with allylamine. *Plasma Process. Polym.* **5**, 92 (2008).
41. Lerotic, M., Mak, R., Wirick, S., Meirer, F. & Jacobsen, C. MANTiS: A program for the analysis of X-ray spectromicroscopy data. *J. Synchrotron Radiat.* **21**, 1206 (2014).
42. Swaraj, S. & Ade, H. Differences in NEXAFS of odd/even long chain n-alkane crystals. *J. Electr. Spectr. Rel. Phen.* **191**, 60 (2013).
43. Urquhart, S. G. & Ade, H. Trends in the Carbonyl Core (C 1S, O 1S) → π*_{C=O} transition in the near-edge X-ray absorption fine structure spectra of organic molecules. *J. Phys. Chem. B* **106**, 8531 (2002).
44. Belkhou, R. *et al.* HERMES: A soft X-ray beamline dedicated to X-ray microscopy. *J. Synchrotron Radiat.* **22**, 968 (2015).

Acknowledgements

The authors would like to thank Ecole Doctorale of École Polytechnique and Synchrotron SOLEIL for their Ph.D. grants assigned to Haeyon Jun. Philip Schulz thanks the French Agence Nationale de la Recherche for funding under the contract number ANR-17-MPGA-0012. The authors would also like to thank Synchrotron SOLEIL for providing beamtime at HERMES beamline.

Author contributions

S.S., Y.B. and H.J. conceived the experiment. H.J. and S.S. analyzed the data. H.J. wrote the manuscript and all authors reviewed the manuscript. All authors participated in the experiments.

Competing interests

The authors declare no competing interests.

Additional information

Supplementary Information The online version contains supplementary material available at <https://doi.org/10.1038/s41598-022-08256-3>.

Correspondence and requests for materials should be addressed to S.S.

Reprints and permissions information is available at www.nature.com/reprints.

Publisher's note Springer Nature remains neutral with regard to jurisdictional claims in published maps and institutional affiliations.



Open Access This article is licensed under a Creative Commons Attribution 4.0 International License, which permits use, sharing, adaptation, distribution and reproduction in any medium or format, as long as you give appropriate credit to the original author(s) and the source, provide a link to the Creative Commons licence, and indicate if changes were made. The images or other third party material in this article are included in the article's Creative Commons licence, unless indicated otherwise in a credit line to the material. If material is not included in the article's Creative Commons licence and your intended use is not permitted by statutory regulation or exceeds the permitted use, you will need to obtain permission directly from the copyright holder. To view a copy of this licence, visit <http://creativecommons.org/licenses/by/4.0/>.

© The Author(s) 2022