



HAL
open science

Impact of non-axisymmetric magnetic field perturbations on flows

R Varennes, X Garbet, L Vermare, Y Sarazin, V Grandgirard, Guilhem Dif-Pradalier, M Peret

► **To cite this version:**

R Varennes, X Garbet, L Vermare, Y Sarazin, V Grandgirard, et al.. Impact of non-axisymmetric magnetic field perturbations on flows. 25th Joint EU-US TTF Meeting - EU-US Transport Task Force, Sep 2021, E-Conference, United Kingdom. . cea-03350020

HAL Id: cea-03350020

<https://cea.hal.science/cea-03350020>

Submitted on 21 Sep 2021

HAL is a multi-disciplinary open access archive for the deposit and dissemination of scientific research documents, whether they are published or not. The documents may come from teaching and research institutions in France or abroad, or from public or private research centers.

L'archive ouverte pluridisciplinaire **HAL**, est destinée au dépôt et à la diffusion de documents scientifiques de niveau recherche, publiés ou non, émanant des établissements d'enseignement et de recherche français ou étrangers, des laboratoires publics ou privés.

Impact of non-axisymmetric magnetic field perturbations on flows

R.Varenes¹, X.Garbet¹, L.Vermare², Y.Sarazin¹, V.Grandgirard¹, G.Dif-Pradalier¹, M.Peret²

¹CEA, IRFM, France ²LPP, CNRS, Ecole polytechnique, France

Introduction

- Plasma rotation plays a key role in plasma confinement [1][2];
- Control of plasma rotation in reactor-sized tokamak is challenging [3];
- Intrinsic bulk plasma rotation is driven by turbulence and **Neoclassical Toroidal Viscosity (NTV)**;
- Magnetic field ripple is responsible for the NTV.

Objective: Understand the competition/synergy between turbulence and NTV with gyrokinetic simulations.

Theoretical model

A reduced model based on the mean toroidal velocity V_T reads :

$$\frac{\partial V_T}{\partial t} = \text{Neoclassical Toroidal Viscosity} + \text{Turbulent torque}$$

Ripple constrains V_T through neoclassical friction v_ϕ

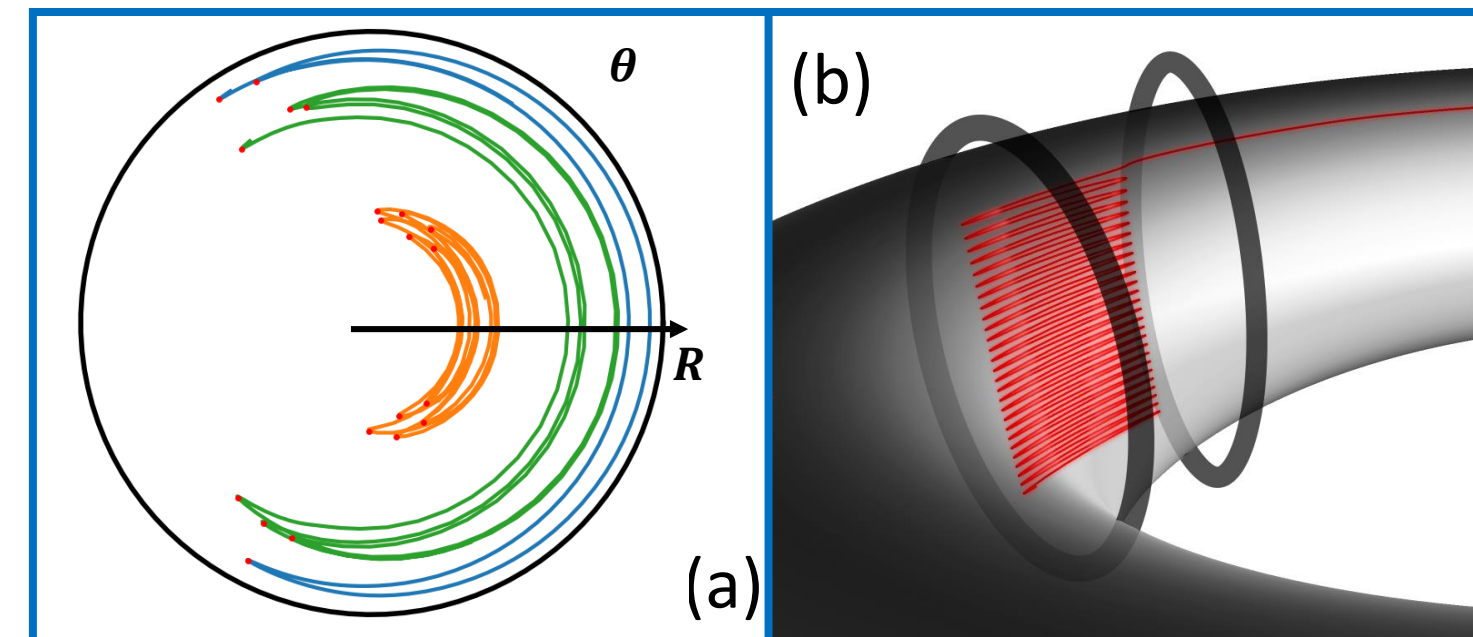


FIG.1 – Kinetic effects induced by ripple : drift of banana bounce points (a) and toroidal trapping between coils (b). Neoclassical friction v_ϕ comes from the collisions between trapped populations.

Turbulence constrains V_T through turbulent viscosity χ_{turb}

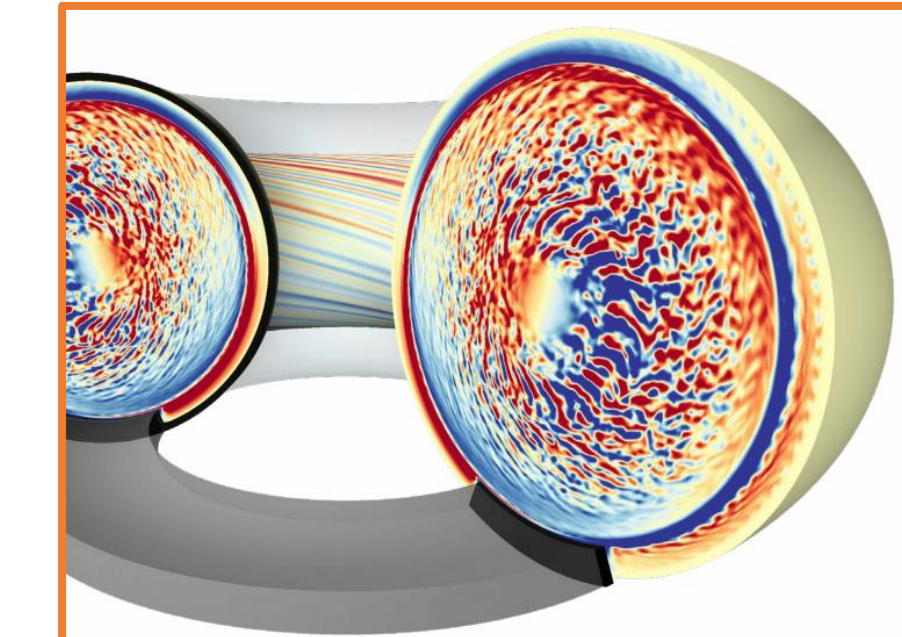


FIG.2 – Snapshot of the turbulent structures seen through a colormap on the electric potential. From rest, V_T grows due to wave-particle interactions.

Goal: Obtain coefficients of **turbulent momentum transport from simulations** and use **neoclassical friction v_ϕ predictions** to find the ripple amplitude threshold for which **neoclassical effects overcome turbulence**.

Turbulent momentum transport

Turbulence impacts V_T through the toroidal Reynold's stress Π_ϕ

$$\Pi_\phi = \underbrace{-\chi_{turb} \frac{\partial V_T}{\partial r}}_{\text{Viscosity}} + \underbrace{\mathcal{V} V_T}_{\text{Pinch}} + \underbrace{\Pi_{res}}_{\text{Residual}} \quad (\text{Eq.1})$$

Obtention of χ_{turb} , \mathcal{V} and Π_{res} using gyrokinetic simulations :

- Simulations of turbulent plasma without ripple with different initial toroidal velocity → FIG.3 shows the dominance of the viscosity : $-\chi_{turb} \frac{\partial V_T}{\partial r}$;
- Eq.1 defines a plane in the $(V_T, \partial_r V_T, \Pi_\phi)$ space;
- Mean square plane fit using simulations output gives an estimation of χ_{turb} within a radial range (see FIG.4 for an example).

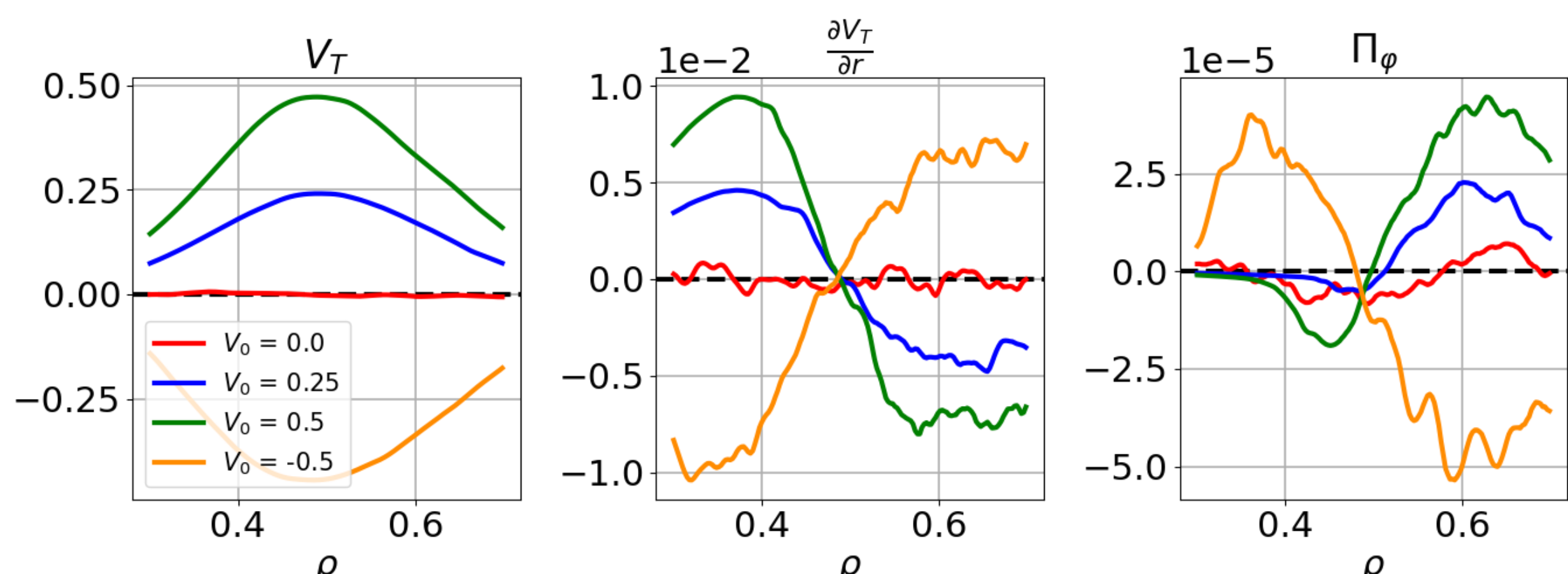


FIG.3 - Radial profiles of V_T , $\partial_r V_T$ and Π_ϕ taken at turbulent saturation for simulations initialized at different toroidal velocity $V_T(t=0) = V_0 e^{4(\rho-0.5)^2}$

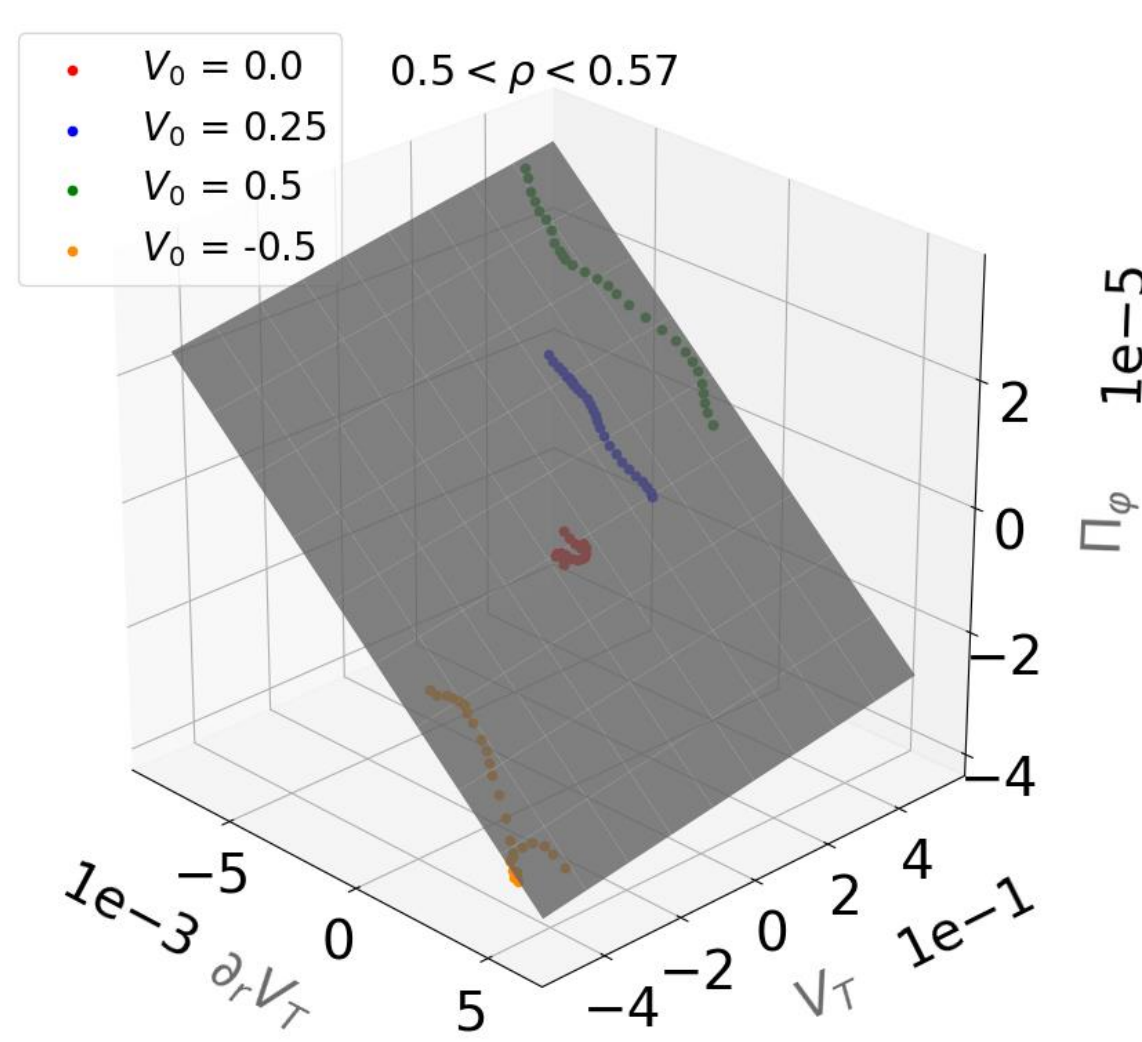


FIG.4 - Plane fit of Π_ϕ using point cloud from simulations giving an estimation of the turbulent viscosity within a radial range.

Neoclassical friction

- Ripple is responsible for magnetic braking m in the toroidal direction : the NTV;
- Neoclassical theory [6][7] with ripple gives :

$$m = -v_\phi \left(V_T - k_T \frac{\nabla T}{e B_p} \right)$$

Friction
Thermal drive

- GYSELA code shows good agreement with neoclassical predictions;
- v_ϕ increases with the ripple amplitude.

Conclusion

- Ripple is responsible for a neoclassical friction that constrains the toroidal velocity;
- Turbulence is a source of intrinsic rotation;
- Evolution of mean toroidal flow ruled by competing turbulent stress and ripple drag forces;
- The radial electric field grows in response to the modification of the toroidal velocity;
- Simulations suggest that neoclassic drag overcomes turbulent stress for typical realistic ripple amplitudes in WEST;
- Future work taking into account boundary physics with realistic WEST ripple amplitude is necessary to understand the shape of $\frac{dE_r}{dr}$ and the transition toward high-confinement modes.

Competition ripple/turbulence

Complete model reads : V_T relaxation time

$$\frac{\partial V_T}{\partial t} \approx m - \nabla \cdot \Pi_\phi \Rightarrow \tau_V \sim \max \left(\frac{\chi_{turb}}{L_V^2}, \nu_\phi \right)^{-1}$$

V_T gradient's length

Boundary physics not in the model → radially gaussian ripple (cf FIG.5)

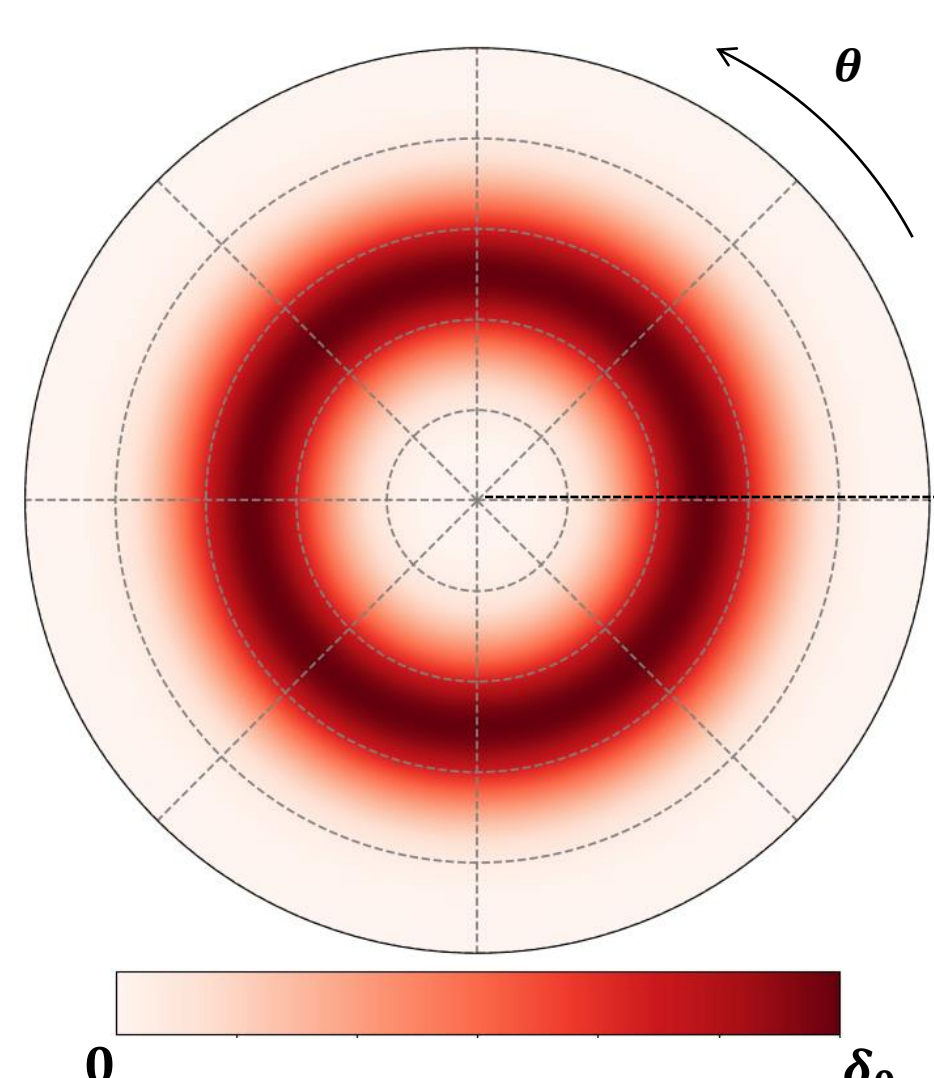


FIG.5 – Polar map of the ripple amplitude used for simulations.

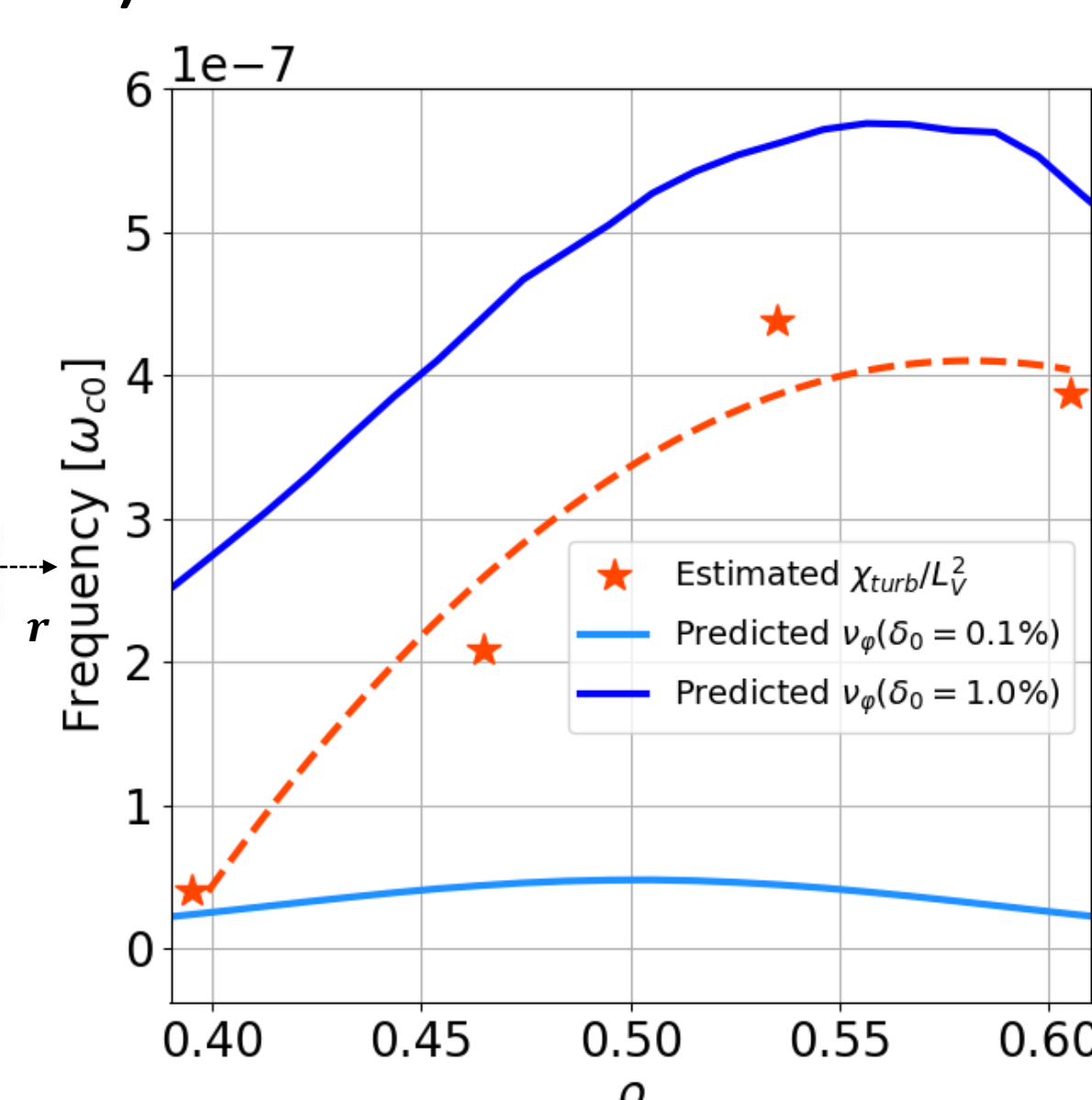


FIG.6 – Radial profiles of estimated turbulent relaxation frequency and predicted neoclassical frictions.

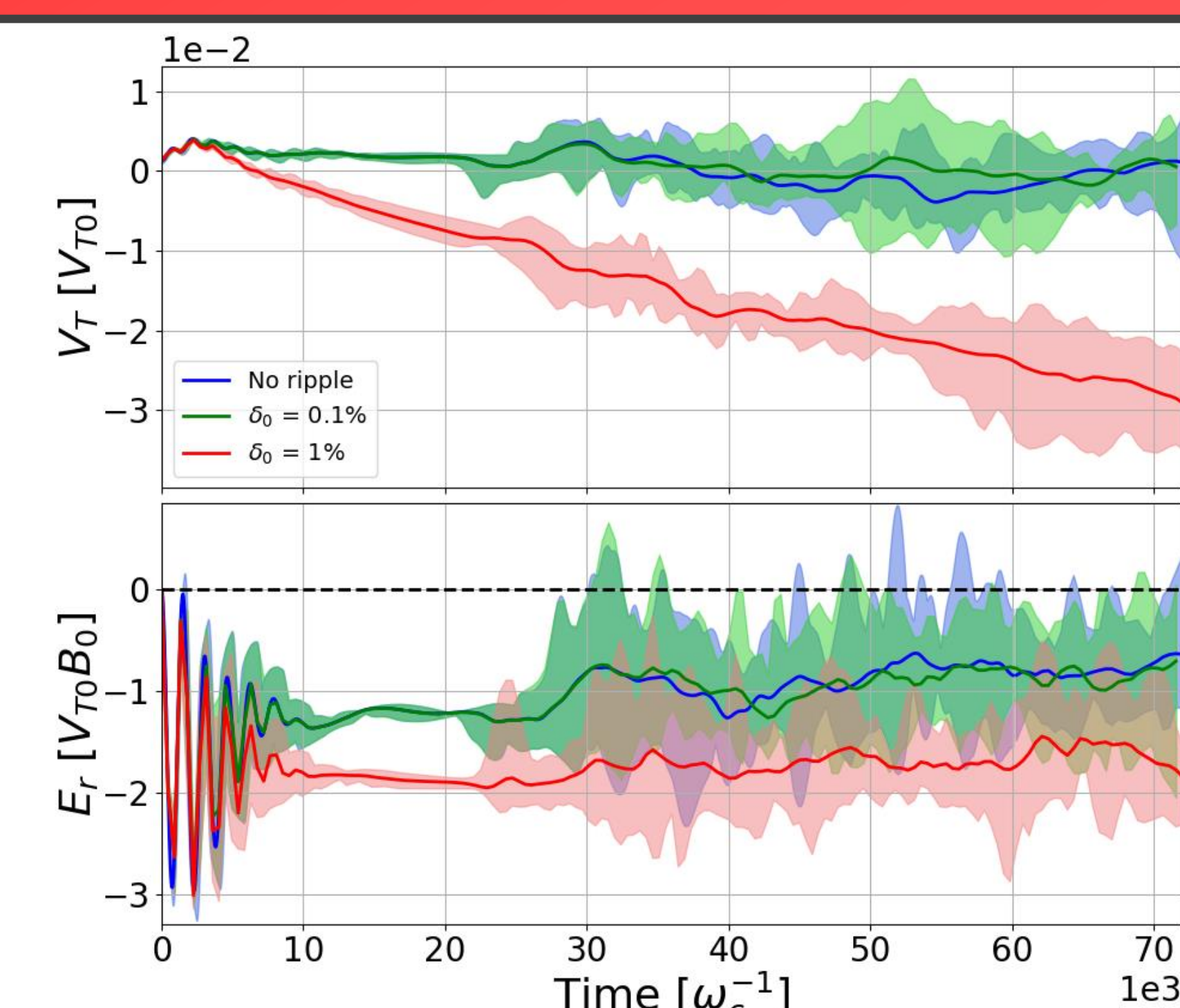


FIG.7 – Time evolution of V_T and E_r in the range $0.45 < \rho < 0.55$ for different ripple amplitudes.

Model verification using 2 simulations :

- With dominant neoclassical friction
 - With dominant turbulent viscosity
- See FIG.6

Main result FIG.7

- $\delta_0 = 0.1\%$ case dominated by turbulence
- $\delta_0 = 1.0\%$ case driven by neoclassical friction → increase of E_r to fulfill force balance

References

- [1] T. S. Hahmand and K. H. Burrell, PoP 1995
- [2] P. Mantica, PRL 2009
- [3] M.N. Rosenbluth & F.L.Hinton NF 1996
- [4] A. Peeters, NF 2011
- [5] P. Diamond, NF 2009
- [6] X.Garbet, PoP 2010
- [7] J.W. Connor, NF 1973