



HAL
open science

Impact of fine divertor geometrical features on the modelling of JET corner configurations

P. Tamain, H. Bufferand, G. Ciraolo, C. Giroud, Y Marandet, F. Militello, D. Moulton, N. Vianello

► To cite this version:

P. Tamain, H. Bufferand, G. Ciraolo, C. Giroud, Y Marandet, et al.. Impact of fine divertor geometrical features on the modelling of JET corner configurations. PSI 24 - 24th International Conference on Plasma Surface Interaction in Fusion Devices, Jan 2021, daejong, South Korea. cea-03176624

HAL Id: cea-03176624

<https://cea.hal.science/cea-03176624>

Submitted on 22 Mar 2021

HAL is a multi-disciplinary open access archive for the deposit and dissemination of scientific research documents, whether they are published or not. The documents may come from teaching and research institutions in France or abroad, or from public or private research centers.

L'archive ouverte pluridisciplinaire **HAL**, est destinée au dépôt et à la diffusion de documents scientifiques de niveau recherche, publiés ou non, émanant des établissements d'enseignement et de recherche français ou étrangers, des laboratoires publics ou privés.



Impact of fine divertor geometrical features on the modelling of JET corner configurations

P. Tamain¹, H. Bufferand¹, G. Ciraolo¹, C. Giroud², Y. Marandet³, F. Militello², D. Moulton², N. Vianello⁴ and JET Contributors*

EUROfusion Consortium, JET, Culham Science Centre, Abingdon, OX14 3DB, UK

¹ CEA, IRFM, F-13108 Saint-Paul-lez-Durance, France

³ Aix-Marseille Univ, CNRS, PIIM, Marseille, France

* See the Appendix of F. Romanelli et al., Proceedings of the 25th IAEA Fusion Energy Conference 2014, Saint Petersburg, Russia

² UKAEA-CCFE, Culham Science Centre, Abingdon, Oxon, OX14 3DB, United Kingdom

⁴ Consorzio RFX (CNR, ENEA, INFN, UNIPD, Acciaierie Venete SpA), Corso Stati Uniti 4 – 35127 Padova, Italy

On the difficulty of modelling JET corner configurations

- **2D mean-field codes** = work-horse of edge plasma modelling
- Main 2D mean-field codes (EDGE2D, SOLPS, SOLEDGE2D) use **structured mesh and flux-surface aligned grid**
- Problem when dealing with geometries where relevant solid surfaces are strongly not orthogonal to flux surface, e.g. **JET corner configurations**
- Proposed work-around: run simulations with **tile 7 slanted** (Fig. 1)
- **Question: how are simulation results impacted by this artificial modification of the geometry?**
- **Strategy: check with code able to deal with both real and artificial geometries**

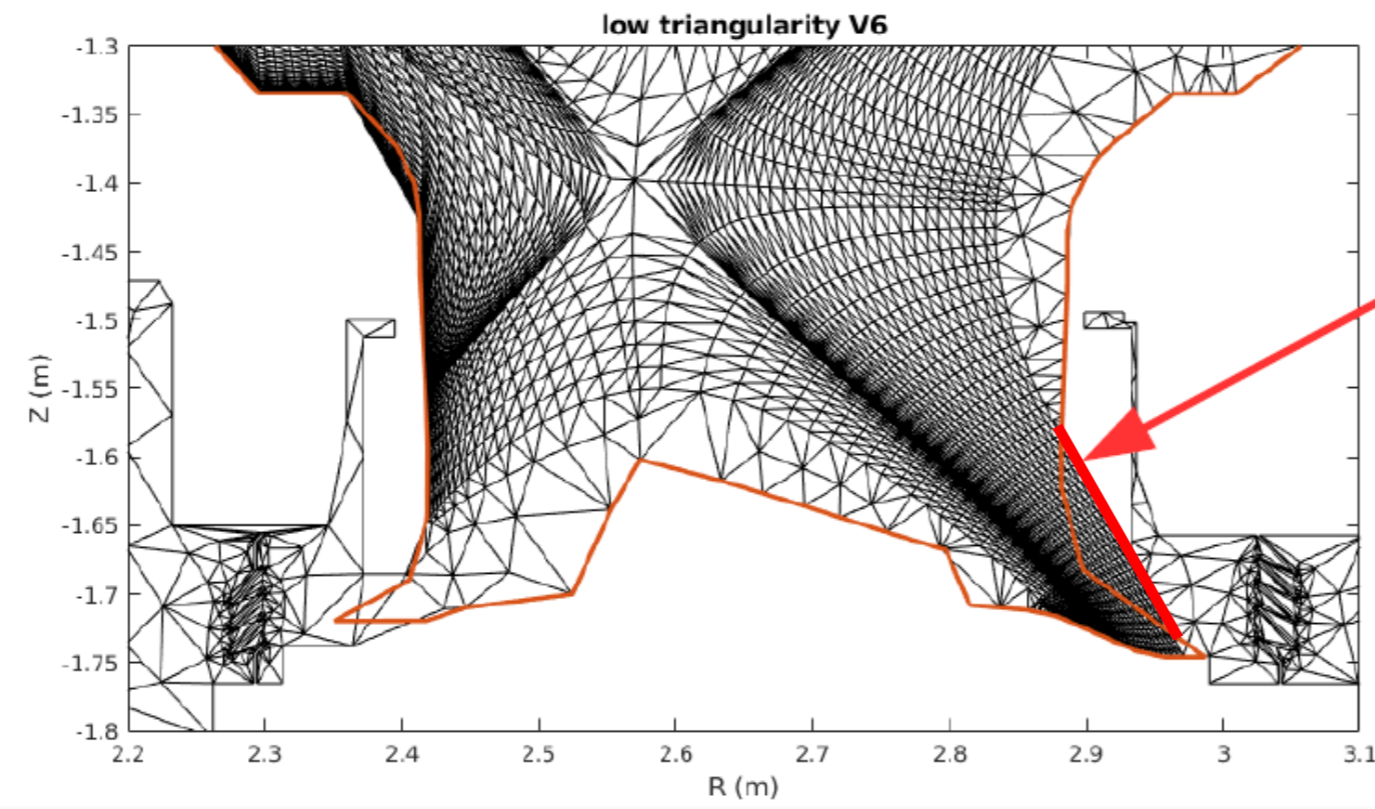


Fig. 1: EDGE2D grid for modelling of JET V6 configuration illustrating the necessary artificial change in the target geometry (courtesy D. Moulton)

SOLEDGE2D-EIRENE simulations setup

- **SOLEDGE2D-EIRENE** [1] can tackle both geometries thanks to use of penalization method for boundary conditions [2]

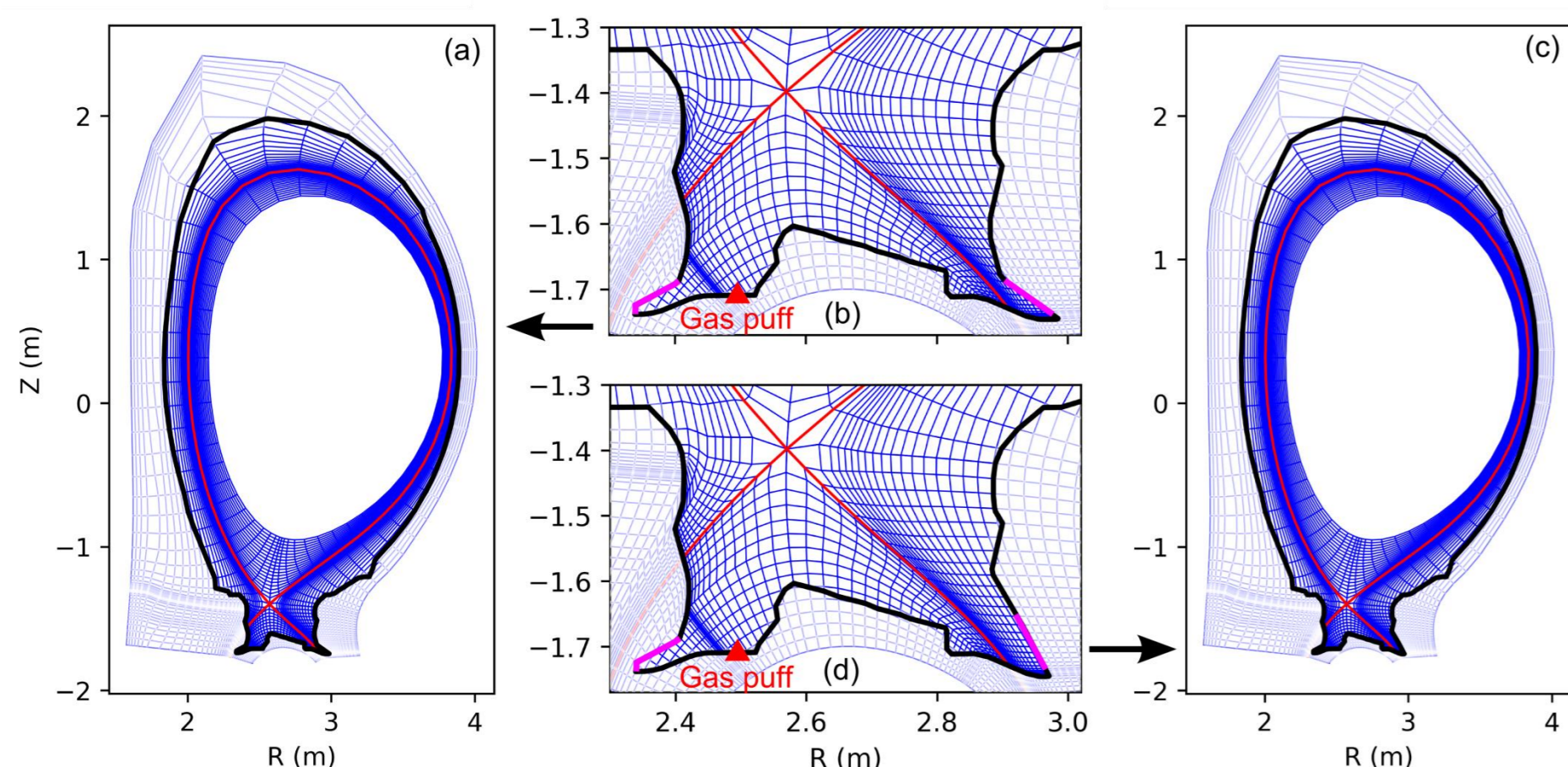


Fig. 2: Geometries and meshes used for the presented set of simulations. (a) and (b): real geometry; (c) and (d): slanted tile 7 geometry. Red full line = main separatrix. Red triangles = location of gas puff. Magenta lines = location of pumps.

- Simulations have been run in both geometries (Fig. 2) with following parameters:
 - pure D plasmas, no drifts
 - $P_{SOL} = 9.2\text{MW}$
 - H-mode transport coefficients (Fig. 3)
 - separatrix density scan through feedback on gas-puff

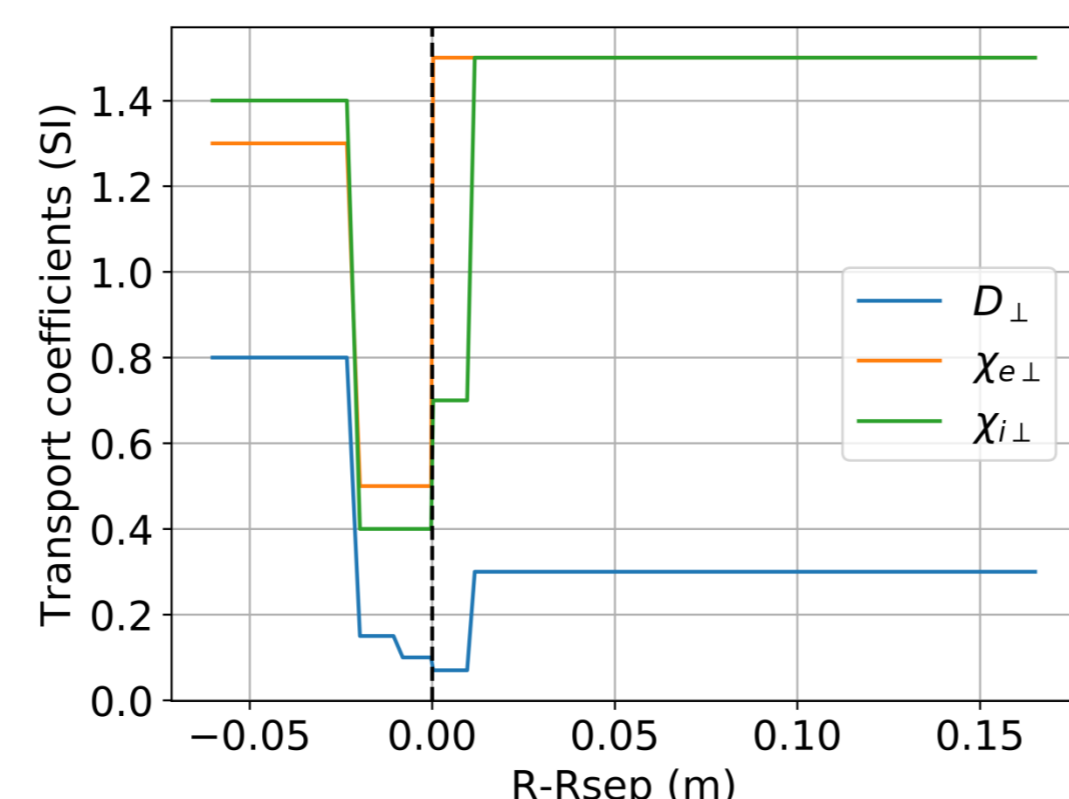


Fig. 3: Perpendicular transport coefficients profiles

[1] H. Bufferand et al., Nucl. Fusion 55, 053025 (2015).

[2] L. Isoardi et al., J. Comp. Phys. 229, 2220 (2010).

Impact on upstream profiles

- **Strong impact in far SOL** beyond T7's apex: slanted T7 systematically denser
- At low density difference propagates to near SOL (deeper penetration of neutrals)

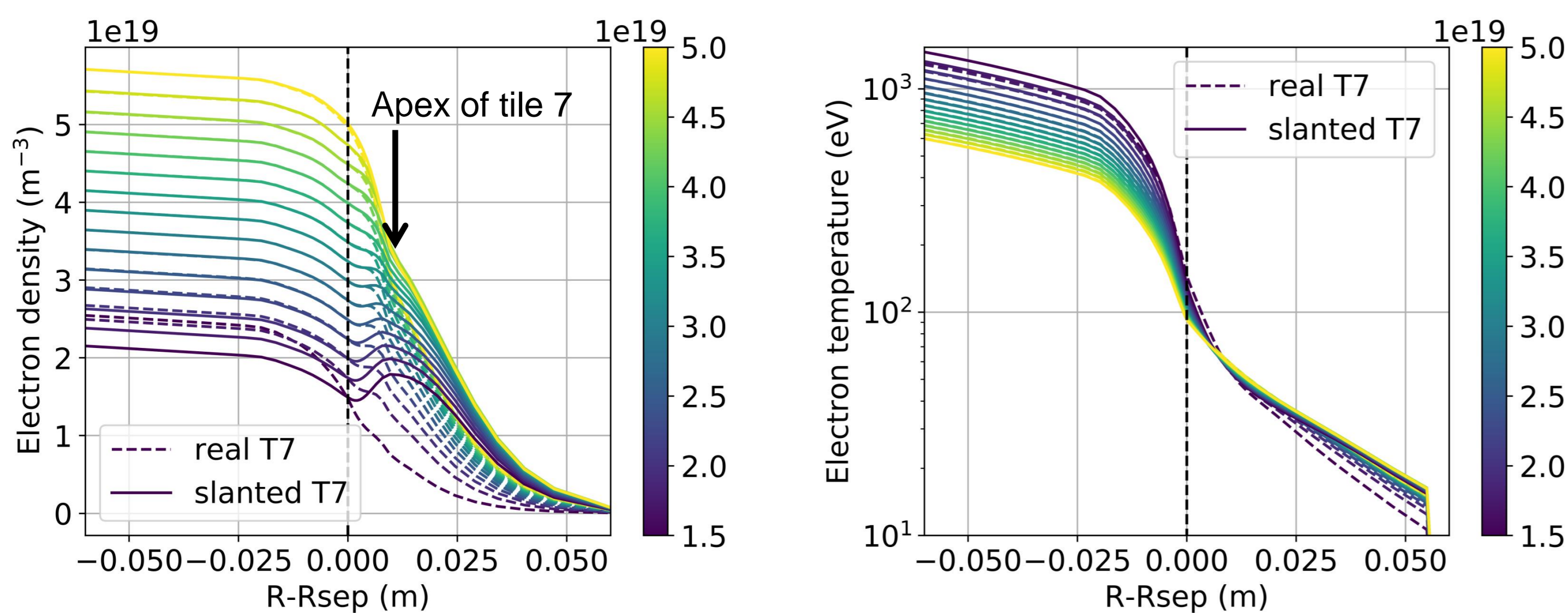


Fig. 4: Outer mid-plane profiles of density (left) and electron temperature (right) for all simulated cases. The color scale corresponds to the various separatrix densities (in m^{-3}). Dashed lines = real tile 7, full lines = slanted tile 7.

Impact on divertor conditions

- **Neutrals distribution little impacted** except for larger density in slanted case on HFS baffle (Fig. 5)

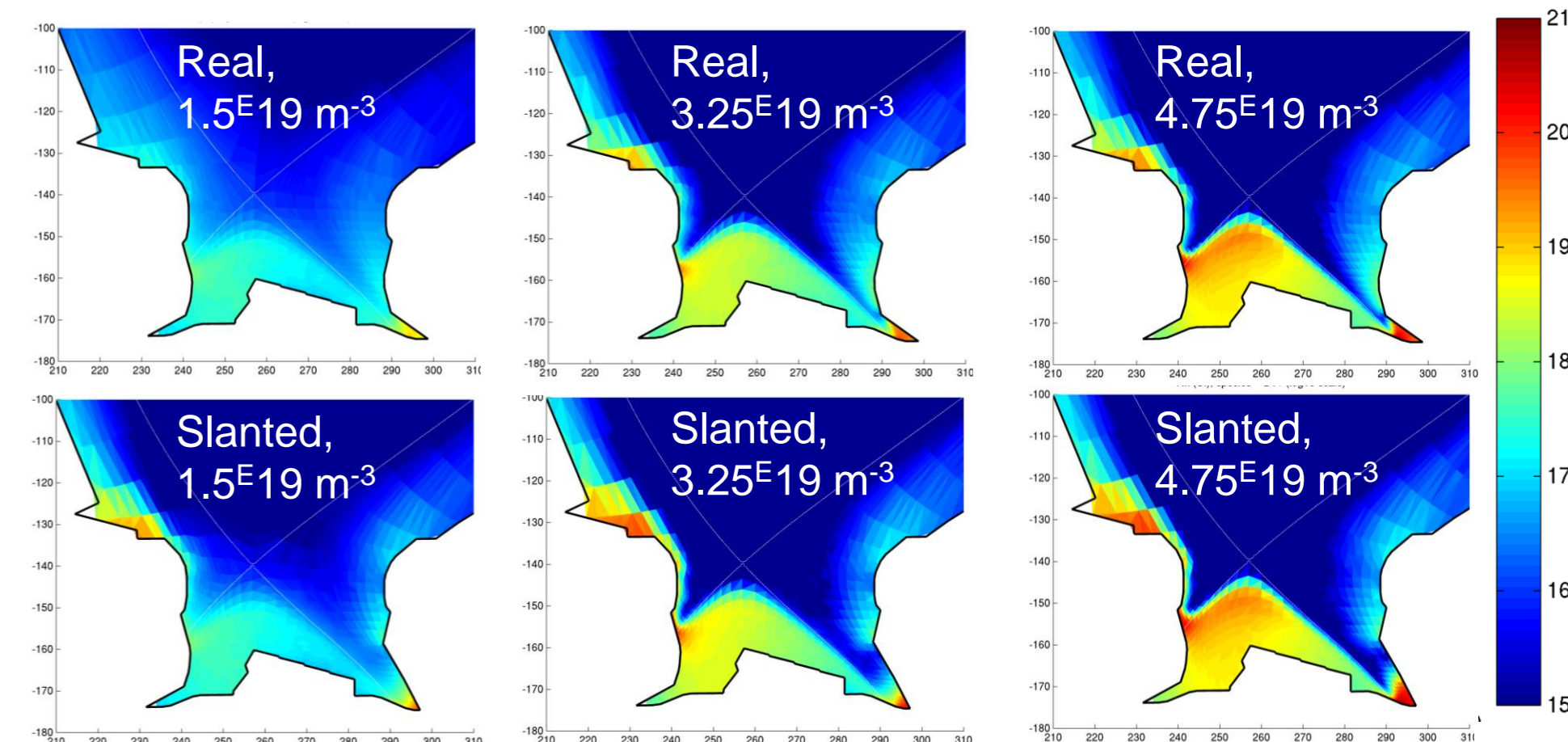
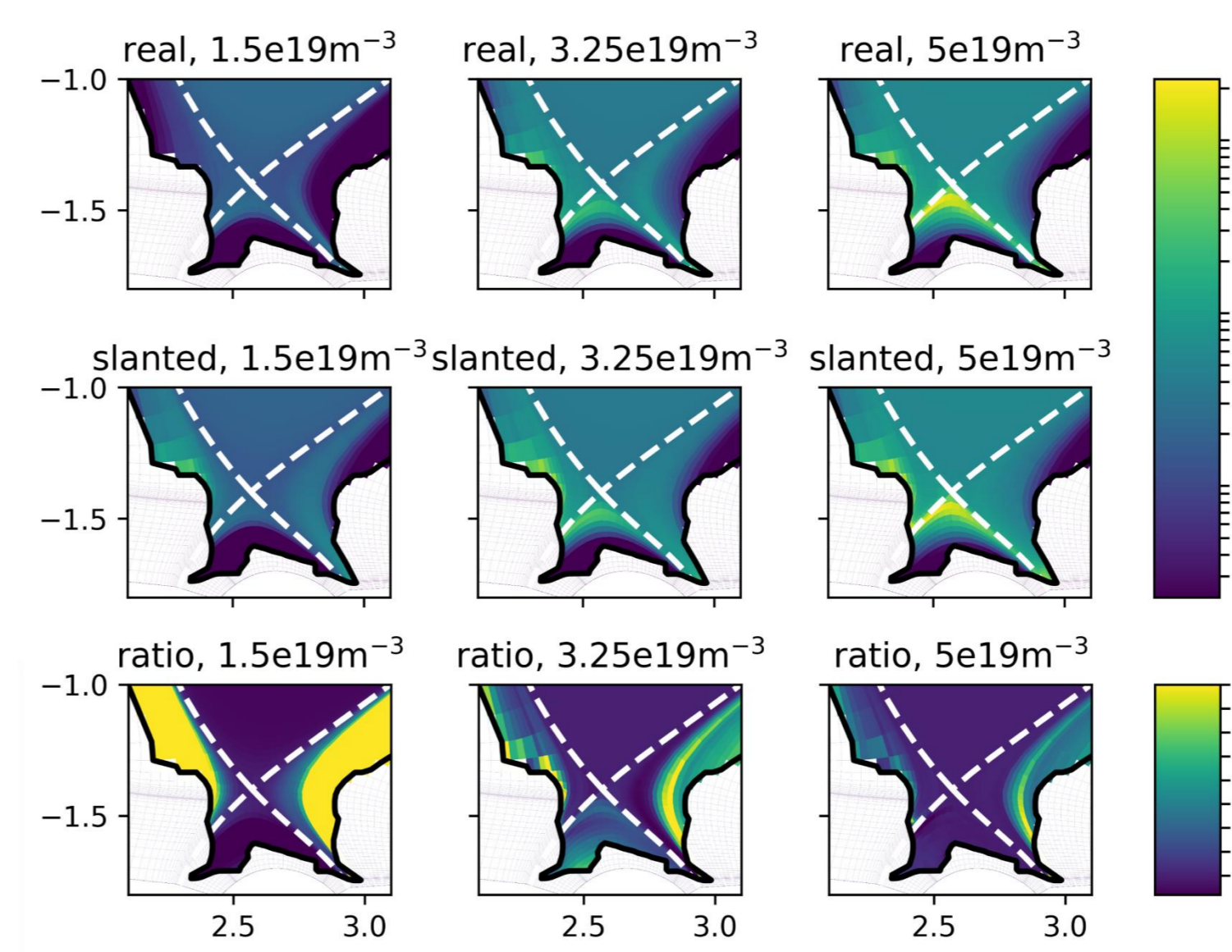


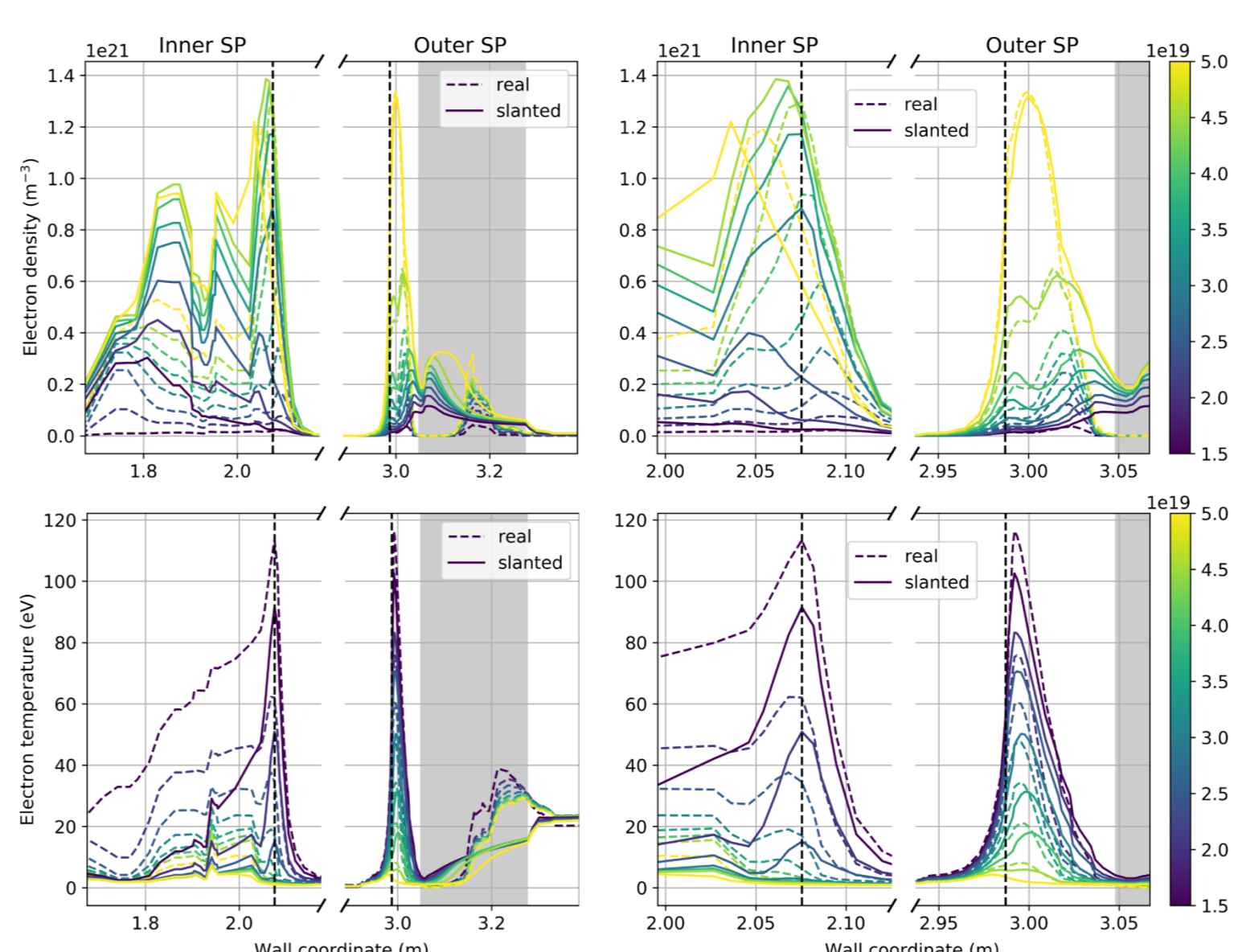
Fig. 5: neutral density ($\log_{10}(\text{m}^{-3})$) in the divertor for 3 upstream densities. Top: real T7; bottom: slanted T7



- **Contrasted impact on electron density distribution** (Fig. 6):
 - Relatively small in LFS near SOL
 - But slanted T7 leads to **much denser plasma (especially at low density) in far SOL and HFS target**

Fig. 6: electron density (in m^{-3}) in the divertor for 3 upstream densities. Top: real T7; middle: slanted T7; bottom: ratio slanted / real.

Impact on target conditions



- In-line with density evolution:
 - **Denser & cooler HFS strike-point** => earlier roll-over
 - LFS strike-point much less impacted
 - Difference **mainly at intermediate densities** (high-recycling)

Fig. 7: Density and electron temperature profiles at targets. Top: electron density; bottom: electron temperature; left: wide view; right: zoom around strike points. Vertical dashed lines = separatrix. Dashed lines = real T7, full lines = slanted T7. Color = upstream density n_e^u (m^{-3}).

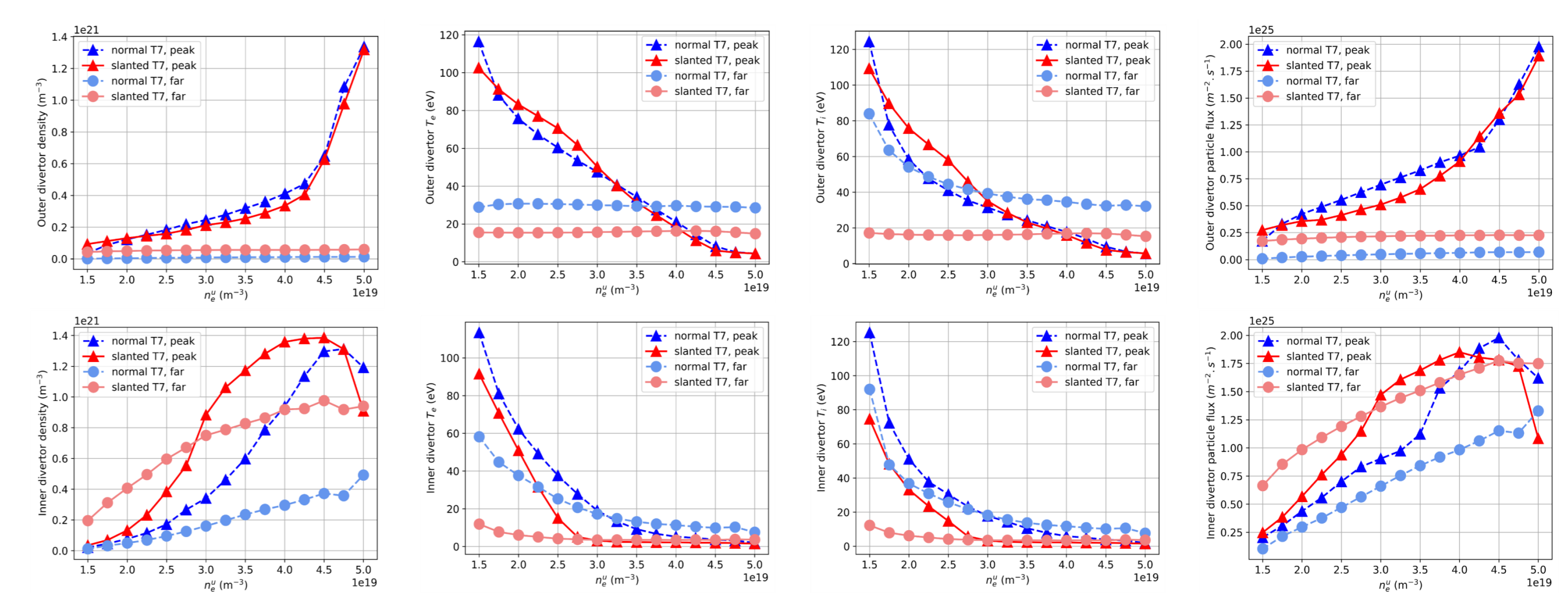


Fig. 8: Target conditions as a function of upstream density n_e^u . Top: outer divertor; bottom: inner divertor. Blue dashed lines = real T7, red full lines = slanted T7. Triangles = peak value at the strike point; circles = far SOL value.

Conclusions

- A minor modification of the target geometry in 2D mean-field simulations can lead to large differences in modelled edge plasma conditions
- In the case of JET corner configurations, strong impact on far SOL upstream profiles and **HFS target conditions**, less on LFS
- Highlights **sensitivity of edge plasma conditions to minor geometrical modifications** and need to model with **adapted numerical tools**