



# Exponentially convergent non overlapping domain decomposition methods for the Helmholtz equation

Francis Collino, Patrick Joly, Matthieu Lecouvez

## ► To cite this version:

Francis Collino, Patrick Joly, Matthieu Lecouvez. Exponentially convergent non overlapping domain decomposition methods for the Helmholtz equation. ESAIM: Mathematical Modelling and Numerical Analysis, 2020, 54 (3), pp.775-810. 10.1051/m2an/2019050 . cea-03052206

**HAL Id: cea-03052206**

**<https://cea.hal.science/cea-03052206>**

Submitted on 22 Dec 2020

**HAL** is a multi-disciplinary open access archive for the deposit and dissemination of scientific research documents, whether they are published or not. The documents may come from teaching and research institutions in France or abroad, or from public or private research centers.

L'archive ouverte pluridisciplinaire **HAL**, est destinée au dépôt et à la diffusion de documents scientifiques de niveau recherche, publiés ou non, émanant des établissements d'enseignement et de recherche français ou étrangers, des laboratoires publics ou privés.

## EXPONENTIALLY CONVERGENT NON OVERLAPPING DOMAIN DECOMPOSITION METHODS FOR THE HELMHOLTZ EQUATION

FRANCIS COLLINO<sup>1</sup>, PATRICK JOLY<sup>1</sup> AND MATTHIEU LECOUEVEZ<sup>2,\*</sup>

**Abstract.** In this paper, we develop in a general framework a non overlapping Domain Decomposition Method that is proven to be well-posed and converges exponentially fast, provided that specific transmission operators are used. These operators are necessarily non local and we provide a class of such operators in the form of integral operators. To reduce the numerical cost of these integral operators, we show that a truncation process can be applied that preserves all the properties leading to an exponentially fast convergent method. A modal analysis is performed on a separable geometry to illustrate the theoretical properties of the method and we exhibit an optimization process to further reduce the convergence rate of the algorithm.

**Mathematics Subject Classification.** 65N55, 65N12, 58G15, 31A10, 35P15.

Received December 22, 2018. Accepted June 30, 2019.

### 1. INTRODUCTION AND DEFINITION OF THE DDM METHOD

#### 1.1. An applicative motivation

The present work is motivated by the numerical simulation of electromagnetic scattering by multilayered coated obstacles. The domain of propagation is naturally decomposed in a union of closed and curved strips  $\Omega = \bigcup_{j=1}^J \Omega_j$ , where  $\Omega_1$  represents the inner-most layer and  $\Omega_J$  the outer domain. Note that this onion-skin structure prevents that more than two subdomains touch each other (see Fig. 1). The interior domain  $\Omega_1$  has an internal boundary  $\Gamma_0$  on which, typically, a perfectly conducting boundary condition is applied. In principle,  $\Omega_J$  is infinite, but in practice, it is bounded by an adequate boundary condition on an artificial boundary  $\Gamma$ . The internal structure of each layer can be highly heterogeneous. This provides a natural geometrical splitting for domain decomposition.

Our aim in this paper is to propose a novel iterative domain decomposition method (DDM) that behaves particularly well on this type of geometry.

---

*Keywords and phrases.* Domain decomposition methods, exponentially fast convergent methods, integral operators, norms of fractional order Sobolev spaces, pseudo-differential operators.

<sup>1</sup> Laboratoire Poems, UMR 7231 CNRS/INRIA/ENSTA ParisTech, ENSTA ParisTech, 828, Boulevard des Maréchaux, 91762 Palaiseau, France.

<sup>2</sup> CEA-Cesta, 15 Avenue des Sablières, 33114 Le Barp, France.

\*Corresponding author: [matthieu.lecouvez@gmail.com](mailto:matthieu.lecouvez@gmail.com)

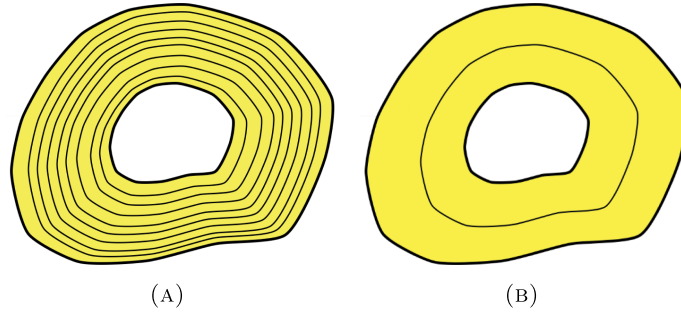


FIGURE 1. Onion-skin like domain decomposition (A) General case (B) Case of 2 subdomains.

## 1.2. Model problem

We shall consider a simple scalar model problem posed in an open set  $(\Omega \subset \mathbb{R}^{d+1})$

$$\begin{cases} \operatorname{div}(\mu^{-1} \nabla u) + k^2 \epsilon u = f, & \text{in } \Omega, & (a) \\ u = 0, & \text{on } \Gamma_0, & (b) \\ \mu^{-1} \partial_\nu u + ik \eta^{-1} u = 0, & \text{on } \Gamma, & (c) \end{cases} \quad (1.1)$$

where the wavenumber in vacuum  $k$  is strictly positive,  $f$  is a given source term in  $L^2(\Omega)$  and  $\epsilon$  and  $\mu$  ( $\eta = \sqrt{\mu/\epsilon}$ ) are real bounded functions which are moreover bounded from below

$$0 < \epsilon_- \leq \epsilon(x) \leq \epsilon_+, \quad 0 < \mu_- \leq \mu(x) \leq \mu_+, \quad \text{a.e. } x \in \Omega. \quad (1.2)$$

In (1.1) c,  $\nu$  denotes the unit normal vector to  $\Gamma$  outgoing with respect to  $\Omega$ . It is well-known that (1.1) admits a unique (complex-valued) solution in  $H^1(\Omega)$ . Here,  $\mu$  and  $\epsilon$  are physical parameters depending on the material. In an electromagnetism context, they are respectively the relative permeability and permittivity of the material. This model problem can also represent acoustic 2D and 3D problems. In such a case,  $\mu = \rho_0$  is the density of the material and  $\epsilon = \frac{1}{\rho_0 c^2}$  where  $c$  is the wave propagation velocity in the media. We also assume that these function  $\mu$  and  $\epsilon$  are piecewise Lipschitz-continuous, that means that there exists a disjoint finite partition of  $\Omega$  such that each part of the partition is of class  $C^0$  and the restriction of  $\mu$  and  $\epsilon$  to each part of the partition is Lipschitz-continuous. We choose to tackle with the most difficult case where  $\epsilon$  and  $\mu$  are real, however all the theory developed in this paper can be extended to the case of complex coefficients  $\epsilon$  and  $\mu$  with even easier proofs, as soon as  $\operatorname{Im} \epsilon$  and  $\operatorname{Im} \mu$  are nonpositive.

## 1.3. Impedance-based transmission conditions for domain decomposition

### 1.3.1. Basic principles

For the domain decomposition, we shall consider the case of only two subdomains  $\Omega_1$  and  $\Omega_2$  separated by one interface  $\Sigma$ . However, all what follows can be extended with no restriction or modification to the case of an arbitrary number of subdomains. Denoting  $u_j$  the restriction of  $u$  to  $\Omega_j$ ,  $j = 1$  or  $2$ , it is well-known that the problem in (1.1) can be rewritten as a transmission problem

$$\operatorname{div}(\mu^{-1} \nabla u_1) + k^2 \epsilon u_1 = f, \quad \text{in } \Omega_1, \quad u_1 = 0 \quad \text{on } \Gamma_0, \quad (1.3)$$

$$\operatorname{div}(\mu^{-1} \nabla u_2) + k^2 \epsilon u_2 = f, \quad \text{in } \Omega_2, \quad \mu^{-1} \partial_\nu u_2 + ik \eta^{-1} u_2 = 0 \quad \text{on } \Gamma, \quad (1.4)$$

with the two transmission conditions

$$u_1 = u_2, \quad \mu^{-1} \partial_{\nu_1} u_1 + \mu^{-1} \partial_{\nu_2} u_2 = 0 \quad \text{on } \Sigma, \quad (1.5)$$

where  $\nu_1$  (respectively  $\nu_2$ ) denotes the unit normal vector to  $\Sigma$  outgoing with respect to  $\Omega_1$  (respectively  $\Omega_2$ ). The trace  $\mu^{-1}\partial_{\nu_j}u_j$  corresponds to the normal component of  $u_j$  taken on the interface  $\Sigma$ :  $\mu^{-1}\partial_{\nu_j}u_j = \mu^{-1}(\nabla u_j \cdot \nu_j)|_{\Sigma}$ . In particular  $\nu_1 = -\nu_2$ . The objective of any non-overlapping iterative domain decomposition method is to construct a sequence

$$(u_1^n, u_2^n) \in H^1(\Omega_1) \times H^1(\Omega_2), \quad n \geq 1,$$

in such a way that at each iteration  $n$ ,  $(u_1^n, u_2^n)$  can be computed for the previous iterates by solving decoupled problems in  $\Omega_1$  and  $\Omega_2$ , and  $(u_1^n, u_2^n) \rightarrow (u_1, u_2)$ , as  $n \rightarrow +\infty$ . The sequence  $(u_1^n, u_2^n)$  will satisfy, according to (1.3) and (1.4)

$$\begin{cases} \operatorname{div}(\mu^{-1}\nabla u_1^n) + k^2\epsilon u_1^n = f, & \text{in } \Omega_1 \\ u_1^n = 0, & \text{on } \Gamma_0 \end{cases}, \quad (1.6)$$

$$\begin{cases} \operatorname{div}(\mu^{-1}\nabla u_2^n) + k^2\epsilon u_2^n = f, & \text{in } \Omega_2 \\ \mu^{-1}\partial_{\nu}u_2^n + ik\eta^{-1}u_2^n = 0, & \text{on } \Gamma \end{cases}, \quad (1.7)$$

These equations must be completed by boundary conditions on  $\Sigma$  for  $u_1^n$  and  $u_2^n$ , that are termed transmission conditions (TC). These transmission conditions should have the following properties:

- (i) They should relate the traces of the solution in each domain at step  $n$  to the traces of the solutions at step  $n-1$  in the neighboring domain, so that the computations of  $u_1^n$  and  $u_2^n$  are decoupled.
- (ii) They should be consistent at convergence with the transmission conditions (1.5).
- (iii) They should guarantee the well-posedness of the local problems and the convergence of the method.
- (iv) They should be relatively easy to handle from a numerical point of view.

A very naive idea that fulfills Criteria (i), (ii) and (iv) would be to prescribe,

$$u_1^n = u_2^{n-1}, \quad \mu^{-1}\partial_{\nu_2}u_2^n = -\mu^{-1}\partial_{\nu_1}u_1^{n-1}. \quad (1.8)$$

Unfortunately, it is well known that this method fails to converge, and this is why impedance-like transmission conditions have been developed. This consists in introducing two operators  $T$  and  $T'$ , acting on functions defined on  $\Sigma$ , named *transmission operators* in the sequel. Then, one rewrites (1.5) as

$$\mu^{-1}\partial_{\nu_1}u_1 + ikTu_1 = -\mu^{-1}\partial_{\nu_2}u_2 + ikTu_2, \quad \mu^{-1}\partial_{\nu_2}u_2 + ikT'u_2 = -\mu^{-1}\partial_{\nu_1}u_1 + ikT'u_1. \quad (1.9)$$

It is straightforward to check that (1.9) is equivalent to (1.5) provided that  $T+T'$  is injective. Then, boundary conditions are obtained for the iterative process by applying a fixed-point procedure to (1.9)

$$\mu^{-1}\partial_{\nu_1}u_1^n + ikTu_1^n = -\mu^{-1}\partial_{\nu_2}u_2^{n-1} + ikTu_2^{n-1}, \quad \mu^{-1}\partial_{\nu_2}u_2^n + ikT'u_2^n = -\mu^{-1}\partial_{\nu_1}u_1^{n-1} + ikT'u_1^{n-1}. \quad (1.10)$$

### 1.3.2. A theoretical ideal choice of transmission operators

To enlighten the construction of (1.17), it is worthwhile mentioning that, theoretically, there exists a choice for  $T$  and  $T'$  for which the convergence is obtained in two iterations. This fact has been proven in a recent paper [9], in a more general setting. The authors consider  $N$  subdomains and show that choosing two exact DtN operators for each interface, then the convergence is achieved in  $N$  iterations. The proof is quite technical for a general  $N$ , but for the case  $N=2$ , one can give a much simpler proof that we reproduce below for completeness and reader's convenience. Consider  $T=T_2$  and  $T'=T_1$  with the following operators  $T_1$  and  $T_2$ :

$$T_1\varphi = \frac{1}{ik\mu} \partial_{\nu_1}v_1(\varphi)|_{\Sigma}, \quad T_2\varphi = \frac{1}{ik\mu} \partial_{\nu_2}v_2(\varphi)|_{\Sigma}, \quad (1.11)$$

where  $v_1 = v_1(\varphi)$   $v_2 = v_2(\varphi)$  are solutions of problems in  $\Omega_1$  and  $\Omega_2$  respectively

$$\begin{cases} \operatorname{div}(\mu^{-1}\nabla v_1) + k^2\epsilon v_1 = 0 & \text{in } \Omega_1 \\ v_1 = 0 & \text{on } \Gamma_0 \\ v_1 = \varphi & \text{on } \Sigma \end{cases}, \quad \begin{cases} \operatorname{div}(\mu^{-1}\nabla v_2) + k^2\epsilon v_2 = 0 & \text{in } \Omega_2 \\ \mu^{-1}\partial_{\nu}v_2 + ik\eta^{-1}v_2 = 0 & \text{on } \Gamma \\ v_2 = \varphi & \text{on } \Sigma \end{cases}.$$

Then, the algorithm in (1.10) converges in two iterations. The proof is as follow. The errors  $e_1^n = u_1^n - u_1$ ,  $e_2^n = u_2^n - u_2$  verify, for  $n \geq 1$  and independently of the initial guess  $(e_1^0, e_2^0)$ ,

$$\left\{ \begin{array}{ll} \operatorname{div}(\mu^{-1} \nabla e_1^n) + k^2 \epsilon e_1^n = 0 & \text{in } \Omega_1 \quad (a) \\ e_1^n = 0 & \text{on } \Gamma_0 \quad (b) \\ \mu^{-1} \partial_{\nu_1} e_1^n + ik T_2 e_1^n = -\mu^{-1} \partial_{\nu_2} e_2^{n-1} + ik T_2 e_2^{n-1} & \text{on } \Sigma \quad (c) \end{array} \right. , \quad (1.12)$$

$$\left\{ \begin{array}{ll} \operatorname{div}(\mu^{-1} \nabla e_2^n) + k^2 \epsilon e_2^n = 0 & \text{in } \Omega_2 \quad (a) \\ \mu^{-1} \partial_{\nu} e_2^n + ik \eta^{-1} e_2^n = 0 & \text{on } \Gamma \quad (b) \\ \mu^{-1} \partial_{\nu_2} e_2^n + ik T_1 e_2^n = -\mu^{-1} \partial_{\nu_1} e_1^{n-1} + ik T_1 e_1^{n-1} & \text{on } \Sigma \quad (c) \end{array} \right. . \quad (1.13)$$

Then, because of the definitions of  $T_1$  and  $T_2$  and thanks to (a) and (b) in (1.12)–(1.13), we have for  $n \geq 1$

$$-\mu^{-1} \partial_{\nu_1} e_1^n + ik T_1 e_1^n = 0, \quad -\mu^{-1} \partial_{\nu_2} e_2^n + ik T_2 e_2^n = 0. \quad (1.14)$$

This is true, in particular for  $n = 1$ , so that substituting (1.14) for  $n = 2$  into (1.12)–(1.13)c we get

$$\left\{ \begin{array}{l} \operatorname{div}(\mu^{-1} \nabla e_1^2) + k^2 \epsilon e_1^2 = 0, \quad \text{in } \Omega_1 \\ e_1^2 = 0, \quad \text{on } \Gamma_0 \\ \mu^{-1} \partial_{\nu_1} e_1^2 + ik T_2 e_1^2 = 0, \quad \text{on } \Sigma \end{array} \right. , \quad \left\{ \begin{array}{l} \operatorname{div}(\mu^{-1} \nabla e_2^2) + k^2 \epsilon e_2^2 = 0 \quad \text{in } \Omega_2 \\ \mu^{-1} \partial_{\nu} e_2^2 + ik \eta^{-1} e_2^2 = 0 \quad \text{on } \Gamma \\ \mu^{-1} \partial_{\nu_2} e_2^2 + ik T_1 e_2^2 = 0 \quad \text{on } \Sigma \end{array} \right. ,$$

and then  $e_1^2 = e_2^2 = 0$  ! This remark is of pure theoretical interest but of no practical consequence: actually, determining  $T_1$  and  $T_2$  is more difficult than solving the initial problem. However, this could be used as a guide for the construction of good operators  $T$  and  $T'$  and this is the idea that lead to the construction of some DDM method (see next section).

### 1.3.3. A brief review of the literature

The formalism of Section 1.3.1 includes most of the non-overlapping DDM proposed in the literature.

- If we set

$$T = T' = I, \quad (1.15)$$

one recovers the pioneering works of Bruno Després [7] for which general proof of convergence has been given. However, the method suffers from slow convergence.

- A number of works (see [10, 11] for the mathematical literature, and [18, 23] for the engineering literature) have tried to improve Després's method by considering local boundary operators that read

$$T = T' = \alpha I - \beta \partial_s^2, \quad (1.16)$$

where  $\partial_s^2$  is the second order tangential derivative and  $\alpha$  and  $\beta$  are complex numbers. In most of these works, the choice of these TCs have been justified on very special cases only:

- the medium is homogeneous (constant coefficients)
- the geometry is separable (for instance, a planar interface separating two half-spaces).

In such cases, by using a modal decomposition, one can analyze the convergence properties of the iterative algorithm and try to optimize the convergence rate by playing with  $\alpha$  and  $\beta$ .

However, no general proof of convergence has been provided, even when the modal analysis is possible. Nevertheless, numerical experiments show that, at least on specific test-cases, these algorithms have better convergence properties than Després's one.

- More recently, a new class of operators has been proposed in [3], namely

$$T = T' = I - \sum_{p=1, N} \alpha_p (1 - \beta_p \partial_{ss}^2)^{-1}, \quad (1.17)$$

where  $\alpha_p$  and  $\beta_p$  are complex coefficients derived from a Padé-like approximation of the function  $\sqrt{1-s^2}$  in the complex plane ( $s$  is related to the wave mode). Indeed, when  $\Sigma$  is a line,  $\Omega_1$  and  $\Omega_2$  are two half-spaces and  $\mu = \epsilon = 1$ , then the ideal operators  $T_1 = T_2$  (see (1.11) and the previous section) coincide and their Fourier symbol is  $\frac{1}{ik}\sqrt{1-\xi^2/k^2}$  where  $\xi$  is the Fourier variable associated to the coordinate along  $\Sigma$  (see for instance [22]).

Again, the analysis of the method is restricted to cases with constant coefficients and a separable geometry. No general proof of convergence and uniqueness is given. However, in practice, when applied to the Helmholtz equation with constant coefficients, this method may provide astonishingly good convergence properties (that we have experimented ourselves), much better than with the TCs in (1.15) and (1.16).

All the methods presented above fulfill criteria (i), (ii) and (iv) since they use only local operators (or inverse of such operators). However, except for (1.15), they fail to satisfy (iii), meaning that their robustness is questionable.

#### 1.4. Objective and outline of the paper

Our goal is to provide a class of transmission operators and a corresponding iterative process, which is a relaxed version of the Jacobi algorithm (1.10), in order to achieve the following requirements

- (P1) The method is robust in the sense that the convergence is guaranteed,
- (P2) The method is fast in the sense that the convergence is exponential,

these two properties being valid in the most general case: arbitrary variable coefficients and general geometry of the interface. The robustness property (P1) will be obtained by extending the framework proposed in [5]. As we will see later, the second property (P2) above cannot be reached with Padé-like operators and that is why we will have to use non local operators.

The present article reports on the results of the PhD thesis [15] defended in July 2015. Preliminary results were announced in [14]. As a matter of fact, the use of non local operators was already suggested in [5]. Since then, the use of integral operators for building DDM has also been proposed in [4] and [21].

Note that our approach, that proposes to use integral operators for DDM for the volumic formulation of the Helmholtz equation in a general medium, is different, for instance, from the method in [21] that concerns a DDM for a boundary integral formulation of a transmission problem between several homogeneous media.

The outline of the rest of the paper is as follows. Section 2 is devoted to the presentation and theoretical analysis of the method. In Section 2.1 we present an iterative domain decomposition algorithm (Sect. 2.1.1), and a choice of appropriate transmission operators (Sect. 2.1.2) that provides exponential convergence (Thm. 2.1). Section 2.2 is devoted to the proof of Theorem 2.1. In Section 3, we propose to construct in a slightly restricted context (corresponding to condition (3.1)) concrete transmission operators, using particular boundary integral operators, fitting the theory of Section 2. We show that some strategies are compatible with a truncation procedure to achieve a quasi localization of the integral operators. In Section 4, we go to more quantitative results in particular 2D situation allowing for a separation of variables as is done in many previous DDM papers: in this case, the interface is a circle and the analysis relies on a diagonalization property of the transmission operator in the corresponding Fourier basis (see condition (4.2)). This allows us to compute “explicitly” the convergence rate of the method in this case *via* a modal analysis (Sect. 4.1). This analysis also shows that the use of non local operators is mandatory for achieving exponential convergence (Sect. 4.2). We also show that the operators of Section 3 satisfy (4.2) (Sect. 4.3). In Section 5, we pursue the study of the model problem of Section 4 for one of the operators of Section 3. We propose an optimization procedure for the two real parameters appearing in the definition of this operator and for the relaxation parameter of the Jacobi algorithm (Sect. 5.1). The result of this process is quantified in Section 5.2 on a particular example. Finally, in Sections 5.3 and 5.4, in this particular example, we analyze the influence of the wavenumber and of the truncation process mentioned above on the optimized convergence rate.

## 2. ROBUST EXPONENTIALLY FAST DDM

### 2.1. An iterative DDM algorithm and its convergence

#### 2.1.1. A relaxed Jacobi algorithm

The algorithm that we are going to propose is a relaxed version of the algorithm (1.6)–(1.7)–(1.10), which is often referred as a Jacobi algorithm. To allow for a more compact writing in the sequel, it is useful to introduce some notations. To begin, we introduce the two operators

$$\mathcal{B}_1 = \mu^{-1} \partial_{\nu_1} + ikT, \quad \mathcal{B}_2 = \mu^{-1} \partial_{\nu_2} + ikT'. \quad (2.1)$$

Of course, these are implicitly understood as trace operators on  $\Sigma$ :  $\mathcal{B}_j$  acts on functions defined in  $\Omega_j$ , more precisely in the Hilbert space

$$\mathcal{H}_j = \{v \in H^1(\Omega_j) \mid \operatorname{div}(\mu^{-1} \nabla v) \in L^2(\Omega_j)\} \quad (2.2)$$

equipped with the graph norm

$$\|v\|_{\mathcal{H}_j}^2 := \|v\|_{H^1(\Omega_j)}^2 + \|\operatorname{div}(\mu^{-1} \nabla v)\|_{L^2(\Omega_j)}^2. \quad (2.3)$$

We assume that

$$(T, T') \in \mathcal{L}(H^{\frac{1}{2}}(\Sigma), H^{-\frac{1}{2}}(\Sigma))^2, \quad (2.4)$$

so that classical trace theorems ensure that

$$\mathcal{B}_j \in \mathcal{L}(\mathcal{H}_j, H^{-\frac{1}{2}}(\Sigma)). \quad (2.5)$$

Noticing that  $-\mu^{-1} \partial_{\nu_2} + ikT = -\mathcal{B}_2 + ik(T + T')$  and  $-\mu^{-1} \partial_{\nu_1} + ikT' = -\mathcal{B}_1 + ik(T + T')$ , the transmission conditions (1.9) read

$$\mathcal{B}_1 u_1 = -\mathcal{B}_2 u_2 + ik(T + T')u_2, \quad \mathcal{B}_2 u_2 = -\mathcal{B}_1 u_1 + ik(T + T')u_1. \quad (2.6)$$

By definition, the left hand side quantities of (1.9) are respectively the *incoming traces* of  $u_1$  and  $u_2$  through  $\Sigma$ , while the right hand side quantities are the *outgoing traces* of  $u_2$  and  $u_1$ . In other words, (1.9) expresses that on  $\Sigma$ , the incoming trace of  $u_1$  (or  $u_2$ ) is equal to the outgoing trace of  $u_2$  (or  $u_1$ ). In the iterative procedure, for decoupling the computation of  $(u_1^n, u_2^n)$ , that satisfy (1.6), (1.7), the simplest way is to apply the simple fixed point procedure (1.10) of Section (1.3), that gives with the new notation

$$\mathcal{B}_1 u_1^n = -\mathcal{B}_2 u_2^{n-1} + ik(T + T')u_2^{n-1}, \quad \mathcal{B}_2 u_2^n = -\mathcal{B}_1 u_1^{n-1} + ik(T + T')u_1^{n-1}, \quad (2.7)$$

which amounts to impose that, in each domain, the incoming trace of the solution at step  $n$  is equal to the outgoing trace of the solution at step  $n - 1$  in the neighboring domain. We shall use in fact a slightly more sophisticated (or relaxed) version of this algorithm by imposing that the incoming trace of the solution at step  $n$  is a linear convex combination of the same quantity at step  $n - 1$  and of the outgoing trace of the solution at step  $n - 1$  in the neighboring domain. More precisely, introducing  $r \in ]0, 1]$  a relaxation parameter, we write

$$\mathcal{B}_1 u_1^n = (1 - r)\mathcal{B}_1 u_1^{n-1} + r(-\mathcal{B}_2 u_2^{n-1} + ik(T + T')u_2^{n-1}), \quad (2.8)$$

$$\mathcal{B}_2 u_2^n = (1 - r)\mathcal{B}_2 u_2^{n-1} + r(-\mathcal{B}_1 u_1^{n-1} + ik(T + T')u_1^{n-1}). \quad (2.9)$$

Of course, (2.8) will be used as a boundary condition on  $\Sigma$  for (1.6), and (2.9) as a boundary condition on  $\Sigma$  for (1.7). It means that, the problems to solve in each subdomain are

$$\begin{cases} \operatorname{div}(\mu^{-1} \nabla u_1^n) + k^2 \epsilon u_1^n = f, & \text{in } \Omega_1, \\ u_1^n = 0, & \text{on } \Gamma_0, \\ \mathcal{B}_1 u_1^n = (1 - r)\mathcal{B}_1 u_1^{n-1} + r(-\mathcal{B}_2 u_2^{n-1} + ik(T + T')u_2^{n-1}), & \text{on } \Sigma, \end{cases} \quad (2.10)$$

$$\begin{cases} \operatorname{div}(\mu^{-1} \nabla u_2^n) + k^2 \epsilon u_2^n = f, & \text{in } \Omega_2, \\ \mu^{-1} \partial_{\nu} u_2^n + ik \eta^{-1} u_2^n = 0, & \text{on } \Gamma, \\ \mathcal{B}_2 u_2^n = (1 - r)\mathcal{B}_2 u_2^{n-1} + r(-\mathcal{B}_1 u_1^{n-1} + ik(T + T')u_1^{n-1}), & \text{on } \Sigma. \end{cases} \quad (2.11)$$

### 2.1.2. Choice for the operators $T$ and $T'$ and convergence of the algorithm

In the spirit of [5] of which the present paper is a continuation and a generalization, our aim is to reconsider the issue of impedance transmission conditions, by focusing on the robustness criterion (iii).

Given an operator  $T \in \mathcal{L}(H^{\frac{1}{2}}(\Sigma), H^{-\frac{1}{2}}(\Sigma))$ , we denote by  $T_R$  and  $T_I$  the two operators, belonging to that same space,

$$T_R = \frac{T + T^*}{2}, \quad T_I = \frac{T - T^*}{2i}, \quad (2.12)$$

where  $T^*$  denotes the adjoint operator of  $T$ . By construction  $T_R$  and  $T_I$  are symmetric, and we have  $T = T_R + iT_I$ ,  $T^* = T_R - iT_I$ .

In this paper, we will take  $T' = T^*$ , and we make the following assumption on  $T_R$

$$T_R \text{ (or equivalently } T + T^*) \text{ is positive and injective.} \quad (2.13)$$

According to what we said in Section 1.3, and under this assumption, the transmission conditions (2.6) are equivalent to the original conditions (1.5).

We can state the convergence theorem, which is the main result of this Section 2.

**Theorem 2.1.** *Using  $T' = T^*$  and under assumption (2.13), then given any initial guess  $(u_1^0, u_2^0) \in \mathcal{H}_1 \times \mathcal{H}_2$ , the iterative process (2.10), (2.11) with  $r \in ]0, 1]$  defines a unique sequence*

$$(u_1^n, u_2^n) \in \mathcal{H}_1 \times \mathcal{H}_2, \quad \forall n > 0, \quad (2.14)$$

and the sequence converges towards  $(u_1, u_2)$  in  $\mathcal{H}_1 \times \mathcal{H}_2$ . Moreover, under the additional assumption:

$$T_R = \frac{T + T^*}{2} \text{ is an isomorphism from } H^{\frac{1}{2}}(\Sigma) \text{ onto } H^{-\frac{1}{2}}(\Sigma), \quad (2.15)$$

the iterative method converges exponentially fast if  $r \in ]0, 1[$ , i.e. there exists a positive constant  $C$  and a real number  $\tau_r \in ]0, 1[$  such that

$$\|u_1^n - u_1\|_{\mathcal{H}_1} + \|u_2^n - u_2\|_{\mathcal{H}_2} < C \tau_r^n. \quad (2.16)$$

**Remark 2.2.** As indicated in the above theorem, assumption (2.15) is not required for the convergence of the algorithm, but only for the exponential convergence (see [5]). When considering the natural extension of (1.6), (1.7) to many subdomains, it is also to ensure the exponential convergence that crossing points must be excluded.

**Remark 2.3.** Note that Padé-like operators do not verify (2.15), and we will see in Section 4 that the exponential convergence cannot be achieved with such operators.

**Remark 2.4.** Let us note that any operator  $T_R$  satisfying (2.13), (2.15) can be written (in a non unique way) as

$$T_R = \Lambda^* \Lambda \quad \text{where } \Lambda \text{ is an isomorphism from } H^{\frac{1}{2}}(\Sigma) \text{ onto } L^2(\Sigma). \quad (2.17)$$

and  $\Lambda^* \in \mathcal{L}(L^2(\Sigma), H^{-\frac{1}{2}}(\Sigma))$  is the adjoint of  $\Lambda$ . Reciprocally, any operator  $T_R$  satisfying (2.17) fulfills (2.13) and (2.15). Note that, according to Banach's theorem, (2.13), (2.15) imply the existence of  $\alpha_\Sigma > 0$  such that

$$\forall \varphi \in H^{\frac{1}{2}}(\Sigma), \quad \langle T_R \varphi, \varphi \rangle_\Sigma = \|\Lambda \varphi\|_{L^2(\Sigma)}^2 \geq \alpha_\Sigma \|\varphi\|_{H^{\frac{1}{2}}(\Sigma)}^2, \quad (2.18)$$

where  $\langle \cdot, \cdot \rangle_\Sigma$  denotes the duality product between  $H^{\frac{1}{2}}(\Sigma)$  and  $H^{-\frac{1}{2}}(\Sigma)$ .



## 2.2. Proof of Theorem 2.1

### 2.2.1. Well-posedness of the local problems

The objective here is to show that the process (2.10), (2.11) defines a unique sequence

$$(u_1^n, u_2^n) \in \mathcal{H}_1 \times \mathcal{H}_2.$$

Obviously, this results from the well-posedness, for any given data  $f \in L^2(\Omega)$  and  $x_1, x_2 \in H^{-\frac{1}{2}}(\Sigma)$ , of the following problems in  $H^1(\Omega_1)$  or  $H^1(\Omega_2)$

$$(\mathcal{P}_1) \begin{cases} \operatorname{div}(\mu^{-1} \nabla v_1) + k^2 \epsilon v_1 = f, & \text{in } \Omega_1 \\ v_1 = 0, & \text{on } \Sigma_0 \\ \mathcal{B}_1 v_1 = x_1 & \text{on } \Sigma \end{cases}, \quad (\mathcal{P}_2) \begin{cases} \operatorname{div}(\mu^{-1} \nabla v_2) + k^2 \epsilon v_2 = f, & \text{in } \Omega_2 \\ \mu^{-1} \partial_\nu v_2 + ik \eta^{-1} v_2 = 0, & \text{on } \Gamma \\ \mathcal{B}_2 v_2 = x_2 & \text{on } \Sigma \end{cases}.$$

Indeed, according to (2.8), (2.9),  $u_1^n$  (resp.  $u_2^n$ ) is the solution of  $\mathcal{P}_1$  (resp.  $\mathcal{P}_2$ ) with  $x_1$  (resp.  $x_2$ ) given by

$$\begin{aligned} x_1 &= x_1^n := (1-r) \mathcal{B}_1 u_1^{n-1} + r(-\mathcal{B}_2 u_2^{n-1} + 2ik T_R u_2^{n-1}), \\ x_2 &= x_2^n := (1-r) \mathcal{B}_2 u_2^{n-1} + r(-\mathcal{B}_1 u_1^{n-1} + 2ik T_R u_1^{n-1}). \end{aligned} \quad (2.19)$$

**Lemma 2.5.** [Well-posedness of the local problems] Assume that  $f \in L^2(\Omega)$  and  $x_1, x_2 \in H^{-\frac{1}{2}}(\Sigma)$ , problem  $(\mathcal{P}_1)$  (respectively  $(\mathcal{P}_2)$ ) has a solution in  $\mathcal{H}_1$  (respectively  $\mathcal{H}_2$ ).

*Proof.* Note that it is sufficient to prove that  $(\mathcal{P}_1)$  and  $(\mathcal{P}_2)$  are well-posed in  $H^1(\Omega_1)$  and  $H^1(\Omega_2)$  because  $(u_1, u_2) \in \mathcal{H}_1 \times \mathcal{H}_2$  then results from the first equation of  $(\mathcal{P}_1)$  and  $(\mathcal{P}_2)$ . We will give a proof for problem  $(\mathcal{P}_2)$  only, since the proof for  $(\mathcal{P}_1)$  follows along the same lines.

First, it is clear that  $(\mathcal{P}_2)$  is equivalent to the following variational problem (for simplicity, we will drop index 2:  $\Omega_2 \equiv \Omega$ ,  $v_2 \equiv v$ ,  $x_2 = x$ , ... and we use the superscript  $t$  for indicating test functions)

$$\text{Find } v \in H^1(\Omega) \text{ such that } \forall v^t \in H^1(\Omega), \quad b(v, v^t) = \ell(v^t), \quad (2.20)$$

where the bilinear form  $b$  is given by, (again,  $\langle \cdot, \cdot \rangle_\Sigma$  is the duality product between  $H^{\frac{1}{2}}(\Sigma)$  and  $H^{-\frac{1}{2}}(\Sigma)$ )

$$b(v, v^t) = \int_\Omega (\mu^{-1} \nabla v \cdot \nabla \bar{v}^t - k^2 \epsilon v \bar{v}^t) dx + ik \int_\Gamma \eta^{-1} v \bar{v}^t d\sigma + ik \langle T v, v^t \rangle_\Sigma \quad (2.21)$$

and the linear form  $\ell(\cdot)$  is defined by

$$\ell(v^t) = \int_\Omega f \bar{v}^t dx + \langle x, \bar{v}^t \rangle_\Sigma. \quad (2.22)$$

From the properties of operator  $T$  and the standard trace theorem, it is obvious that  $b(\cdot, \cdot)$  and  $\ell(\cdot)$  are continuous in  $H^1(\Omega)$ . To show existence and uniqueness, we use Fredholm's alternative. To this end, we decompose the bilinear form  $b(\cdot, \cdot)$  as follows

$$\begin{cases} b(v, v^t) = b_*(v, v^t) + b_c(v, v^t) \\ b_*(v, v^t) = \int_\Omega (\mu^{-1} \nabla v \cdot \nabla \bar{v}^t + \epsilon v \bar{v}^t) dx + ik \langle T v, v^t \rangle_\Sigma \\ b_c(v, v^t) = \int_\Omega -(1+k^2) \epsilon v \bar{v}^t dx + ik \int_\Gamma \eta^{-1} v \bar{v}^t d\sigma \end{cases} \quad (2.23)$$

In view of Riesz theorem, we introduce three continuous linear operators in  $H^1(\Omega)$  namely  $B$ ,  $B_*$ ,  $B_c$  such that

$$b(v, v^t) = (Bv, v^t)_{H^1(\Omega)}, \quad b_*(v, v^t) = (B_*v, v^t)_{H^1(\Omega)}, \quad b_c(v, v^t) = (B_cv, v^t)_{H^1(\Omega)}. \quad (2.24)$$

Of course, the well-posedness of  $(\mathcal{P}_2)$  is equivalent to show that  $B = B_* + B_c$  is an isomorphism in  $H^1(\Omega)$ . This is proved by showing successively that operator  $B_*$  is an isomorphism, operator  $B_c$  is compact and operator  $B$  is injective (*i.e.* the solution of  $(\mathcal{P}_2)$  is unique).

**(i) The operator  $B_*$  is an isomorphism.** This will result, by using Lax-Milgram theorem, from the coercivity of the bilinear  $b_*$ , namely

$$|b_*(v, v)| \geq \alpha \|v\|_{H^1(\Omega)}^2, \quad \forall v \in H^1(\Omega) \quad (2.25)$$

Setting  $b_{*,r}(v, v) := \operatorname{Re} b_*(v, v)$  and  $b_{*,i}(v, v) := \operatorname{Im} b_*(v, v)$ , it suffices to find  $(\lambda, \gamma) \in \mathbb{R} \times \mathbb{R}_*^+$  such that

$$b_{*,r}(v, v) + \lambda b_{*,i}(v, v) \geq \gamma \|v\|_{H^1(\Omega)}^2, \quad \forall v \in H^1(\Omega) \quad (2.26)$$

Indeed, since  $b_{*,r}(v, v) + \lambda b_{*,i}(v, v) \leq \sqrt{1 + \lambda^2} |b_*(v, v)|$ , (2.26) yields (2.25) with  $\alpha = \gamma (1 + \lambda^2)^{-\frac{1}{2}}$ .

To prove (2.26), we observe that

$$b_{*,r}(v, v) + \lambda b_{*,i}(v, v) = \int_{\Omega} \left( \mu^{-1} |\nabla v|^2 + \epsilon |v|^2 \right) dx - k \langle T_I v, v \rangle_{\Sigma} + k \lambda \langle T_R v, v \rangle_{\Sigma}. \quad (2.27)$$

Then, using (2.18) (coercivity of  $T_R$ ) and  $\langle T_I u, u \rangle_{\Sigma} \leq M_i \|u\|_{H^{\frac{1}{2}}(\Sigma)}^2$  (continuity of  $T_I$ ), we get

$$b_{*,r}(v, v) + \lambda b_{*,i}(v, v) \geq \int_{\Omega} \left( \mu^{-1} |\nabla v|^2 + \epsilon |v|^2 \right) dx + k (\lambda \alpha_{\Sigma} - M_i) \|v\|_{H^{\frac{1}{2}}(\Sigma)}^2. \quad (2.28)$$

Thus, it suffices to take  $\lambda$  larger than  $\alpha_{\Sigma}^{-1} M_i$  to obtain (2.26).

**(ii) The operator  $B_c$  is compact.** This results directly from the following compactness property of the bilinear form  $b_c$

$$(v_n, v_n^t) \rightharpoonup (v, v^t) \text{ weakly in } H^1(\Omega)^2 \implies b_c(v_n, v_n^t) \rightarrow b_c(v, v^t) \quad (2.29)$$

which obviously results from the compactness of the embeddings  $H^1(\Omega) \subset L^2(\Omega)$  and  $H^{\frac{1}{2}}(\Sigma) \subset L^2(\Sigma)$ .

**(iii) The operator  $B$  is injective.** If  $v$  is in the kernel of  $B$ , this means that

$$\begin{cases} \operatorname{div}(\mu^{-1} \nabla v) + k^2 \epsilon v = 0, & \text{in } \Omega & (a) \\ \mu^{-1} \partial_{\nu} v + i k T^* v = 0 & \text{on } \Sigma & (b) \end{cases} \quad (2.30)$$

and, in particular, that  $b(v, v) = 0$ . Therefore

$$\operatorname{Im} b(v, v) := k \langle T_R v, v \rangle_{\Sigma} + k \|\eta^{-\frac{1}{2}} v\|_{L^2(\Gamma)}^2 = k \|\Lambda v\|_{L^2(\Sigma)}^2 + k \|\eta^{-\frac{1}{2}} v\|_{L^2(\Gamma)}^2 = 0, \quad (2.31)$$

that implies  $v = 0$  on  $\Sigma$ . Using (2.30)b, we also deduce that  $\mu^{-1} \partial_{\nu} v = 0$  on  $\Sigma$ . Thanks to (2.30)a, we can then conclude that  $v = 0$  in  $\Omega$  by using a unique continuation argument (see [2]) and the connectiveness of  $\Omega$ .  $\square$

Note that Lemma 2.5 defines implicitly four continuous linear operators

$$R_j \in \mathcal{L}(L^2(\Omega_j), \mathcal{H}_j), \quad E_j \in \mathcal{L}(H^{\frac{1}{2}}(\Sigma), \mathcal{H}_j), \quad j = 1, 2 \quad (2.32)$$

such that the solution  $v_j$  of  $(\mathcal{P}_j)$  satisfies

$$v_j = R_j f + E_j x_j. \quad (2.33)$$

### 2.2.2. Convergence analysis

Our analysis first relies on a reformulation on the interface of the problem for the error.

Let us define the error at iteration  $n$  as well as their incoming traces

$$e^n = (e_1^n, e_2^n) \in \mathcal{H}_1 \times \mathcal{H}_2, \quad e_j^n = u_j^n - u_j, \quad j = 1, 2, \quad (2.34)$$

$$\varepsilon^n = (\varepsilon_1^n, \varepsilon_2^n) = (\mathcal{B}_1 e_1^n, \mathcal{B}_2 e_2^n) \in X = H^{-\frac{1}{2}}(\Sigma) \times H^{-\frac{1}{2}}(\Sigma). \quad (2.35)$$

Obviously, these errors satisfy the interior homogeneous equations

$$\begin{cases} \operatorname{div}(\mu^{-1} \nabla e_1^n) + k^2 \epsilon e_1^n = 0 & \text{in } \Omega_1 \\ e_1^n = 0 & \text{on } \Gamma_0 \end{cases}, \quad (2.36)$$

$$\begin{cases} \operatorname{div}(\mu^{-1} \nabla e_2^n) + k^2 \epsilon e_2^n = 0 & \text{in } \Omega_2 \\ \mu^{-1} \partial_\nu e_2^n + ik \eta^{-1} e_2^n = 0 & \text{on } \Gamma \end{cases}, \quad (2.37)$$

in such a way that, according to the definition of the operators  $E_1$  and  $E_2$  in (2.33), we can write

$$e_1^n = E_1 \varepsilon_1^n, \quad e_2^n = E_2 \varepsilon_2^n. \quad (2.38)$$

This shows that to prove  $e^n \rightarrow 0$  in  $\mathcal{H}_1 \times \mathcal{H}_2$  amounts to prove that  $\varepsilon^n \rightarrow 0$  in  $X$ . In the following, we reinterpret the iterative algorithm (1.6)–(2.8) and (1.7)–(2.9) as an abstract iterative process for the  $\varepsilon^n$ . Indeed, the transmission conditions for  $(e_1^n, e_2^n)$  reads

$$\begin{cases} \mathcal{B}_1 e_1^n = r(-\mathcal{B}_2 e_2^{n-1} + 2ik T_R e_2^{n-1}) + (1-r) \mathcal{B}_1 e_1^{n-1} \\ \mathcal{B}_2 e_2^n = r(-\mathcal{B}_1 e_1^{n-1} + 2ik T_R e_1^{n-1}) + (1-r) \mathcal{B}_2 e_2^{n-1} \end{cases}. \quad (2.39)$$

We introducing the operators  $S$  and  $\Pi$  in  $\mathcal{L}(X)$ :

$$S(x_1, x_2) = (S_1 x_1, S_2 x_2) := (-x_1 + 2ik T_R(E_1 x_1), -x_2 + 2ik T_R(E_2 x_2)), \quad (2.40)$$

$$\Pi(x_1, x_2) = (x_2, x_1). \quad (2.41)$$

Note that  $S$  is diagonal and decouples the two components of any element of  $X$ , while the *exchange operator*  $\Pi$  recouples them. The action of the operator  $S_j$  is obtained through the solution of the local problem in  $\Omega_j$  and transforms the incoming trace into an outgoing trace: it is called the *scattering operator* of  $\Omega_j$ . Setting

$$A = \Pi S \quad \Leftrightarrow \quad A(x_1, x_2) = (-x_2 + 2ik T_R(E_2 x_2), -x_1 + 2ik T_R(E_1 x_1)), \quad (2.42)$$

it is readily seen that (2.39) becomes

$$\varepsilon^n = (1-r) \varepsilon^{n-1} + r A \varepsilon^{n-1} = A_r \varepsilon^{n-1}, \quad A_r := (1-r)I + rA, \quad (2.43)$$

from which it is clear that the convergence of the algorithm will follow from the properties of the operator  $A_r$ , or equivalently the operator  $A$ . The first important property is the object of the following lemma.

**Lemma 2.6.** *Under assumption (2.13), (2.15), the operator  $I - A$  is an isomorphism in  $X$ .*

*Proof.* Given any  $y = (y_1, y_2) \in X$ , we wish to exhibit  $x = (x_1, x_2) \in X$  such that  $(I - A)x = y$  which, according to definition (2.42) of  $A$  can be rewritten as

$$\begin{cases} x_1 - (-x_2 + 2ik T_R(E_2 x_2)) = y_1 \\ x_2 - (-x_1 + 2ik T_R(E_1 x_1)) = y_2 \end{cases} \quad (2.44)$$

Setting  $u_j := E_j x_j \in \mathcal{H}_j$ , we know, by definition of  $E_j$ , that  $x_j = \mathcal{B}_j u_j$ . As a consequence, finding  $(x_1, x_2)$ , is equivalent to finding  $(u_1, u_2)$ . By definition of  $E_j$  again,  $u_1$  and  $u_2$  satisfy

$$\begin{cases} \operatorname{div}(\mu^{-1} \nabla u_j) + k^2 \epsilon u_j = 0, & \text{in } \Omega_j, \quad j = 1, 2 \\ u_1 = 0, & \text{on } \Gamma_0 \\ \mu^{-1} \partial_\nu u_2 + ik \eta^{-1} u_2 = 0, & \text{on } \Gamma \end{cases}. \quad (2.45)$$

We want to deduce  $(u_1, u_2)$  only from  $(y_1, y_2)$ . To do so, we are going to write transmission conditions across  $\Sigma$  deduced from (2.44). For instance, the first equality in (2.44) gives

$$y_1 = \mathcal{B}_1 u_1 + \mathcal{B}_2 u_2 - 2ik T_R u_2 = \mu^{-1} \partial_{\nu_1} u_1 + \mu^{-1} \partial_{\nu_2} u_2 + ik T u_1 + ik T^* u_2 - 2ik T_R u_2. \quad (2.46)$$

That is to say, using the definition of  $\mathcal{B}_j$  and  $2T_R = T + T^*$

$$y_1 = \mu^{-1} \partial_{\nu_1} u_1 + \mu^{-1} \partial_{\nu_2} u_2 + ik T_R (u_1 - u_2). \quad (2.47)$$

In the same way, from the second equality in (2.44), we deduce

$$y_2 = \mu^{-1} \partial_{\nu_1} u_1 + \mu^{-1} \partial_{\nu_2} u_2 - ik T_R (u_1 - u_2). \quad (2.48)$$

If we see (2.47), (2.48) as a linear system in  $\mu^{-1} \partial_{\nu_1} u_1 + \mu^{-1} \partial_{\nu_2} u_2$  and  $u_1 - u_2$ , using the fact – this is the key point – that  $T_R$  is an isomorphism between  $H^{\frac{1}{2}}(\Sigma)$  and  $H^{-\frac{1}{2}}(\Sigma)$ , we obtain

$$\begin{cases} u_1 - u_2 = \frac{1}{ik} T_R^{-1} \frac{y_1 - y_2}{2} & (\in H^{\frac{1}{2}}(\Sigma)) \\ \mu^{-1} \partial_{\nu_1} u_1 + \mu^{-1} \partial_{\nu_2} u_2 = \frac{y_1 + y_2}{2} + i T_I T_R^{-1} \frac{y_1 - y_2}{2} & (\in H^{-\frac{1}{2}}(\Sigma)) \end{cases}. \quad (2.49)$$

In other words, if  $x$  is solution of (2.44), then  $(u_1, u_2)$  is solution of the transmission problem (2.45), (2.49).

The principle of the proof is then natural

- (1) Given  $y = (y_1, y_2) \in X$ , we solve the transmission problem (2.45), (2.49). Because the right-hand sides of (2.49) have the adequate regularity, this problem is well-posed and admits a unique solution  $u = (u_1, u_2)$  : this is a consequence of a classical result for transmission problems: *i.e.* Lemma 2.7, applied with

$$\sigma_d = \frac{1}{ik} T_R^{-1} \left( \frac{y_1 - y_2}{2} \right) \in H^{\frac{1}{2}}(\Sigma), \quad \sigma_n = \frac{y_1 + y_2}{2} - i T_I T_R^{-1} \left( \frac{y_1 - y_2}{2} \right) \in H^{-\frac{1}{2}}(\Sigma). \quad (2.50)$$

- (2) From  $(u_1, u_2)$ , we consider  $x = (x_1, x_2) := (\mathcal{B}_1 u_1, \mathcal{B}_1 u_1)$  and prove that  $x$  solves. This is pure algebra: it suffices to repeat the calculations that led from (2.44) to (2.49) in the reverse order.

□

**Lemma 2.7.** *Given a couple of boundary data  $(\sigma_d, \sigma_n) \in H^{\frac{1}{2}}(\Sigma) \times H^{-\frac{1}{2}}(\Sigma)$ , the transmission problem; find  $v = (v_1, v_2) \in \mathcal{H}_1 \times \mathcal{H}_2$  such that*

$$\begin{cases} \operatorname{div}(\mu^{-1} \nabla v_j) + k^2 \epsilon v_j = 0, & \text{in } \Omega_j, \quad j = 1, 2 \\ v_1 = 0, & \text{on } \Gamma_0 \\ \mu^{-1} \partial_\nu v_2 + ik \eta^{-1} v_2 = 0, & \text{on } \Gamma \\ [v] = \sigma_d & \text{on } \Sigma \\ [\mu^{-1} \partial_\nu v] = \sigma_n & \text{on } \Sigma \end{cases} \quad (2.51)$$

where, by definition  $[v] = v_{1|\Sigma} - v_{2|\Sigma}$  and  $[\mu^{-1} \partial_\nu v] = \mu^{-1} \partial_{\nu_1} v_{1|\Sigma} + \mu^{-1} \partial_{\nu_2} v_{2|\Sigma}$ , admits a unique solution.

*Proof.* It is quite classical. We first construct a lifting operator  $R_2 \in \mathcal{L}(H^{\frac{1}{2}}(\Sigma), H^1(\Omega_2))$ , namely such that  $(R_2(\sigma_d))|_{\Sigma} = \sigma_d$ . For instance, we define

$$R_2(\sigma_d) := u_{\sigma_d} \in \mathcal{H}_2,$$

where  $u_{\sigma_d}$  is the unique solution of the elliptic boundary value problem (note that with respect to the original problem, we change  $k^2$  into  $-k^2$ )

$$\begin{cases} \operatorname{div}(\mu^{-1} \nabla u_{\sigma_d}) - k^2 \epsilon u_{\sigma_d} = 0, & \text{in } \Omega_2 \\ \mu^{-1} \partial_\nu u_{\sigma_d} + ik \eta^{-1} u_{\sigma_d} = 0, & \text{on } \Gamma \\ u_{\sigma_d} = \sigma_d, & \text{on } \Sigma \end{cases}. \quad (2.52)$$

Let  $\tilde{R}_2(\sigma_d) \in L^2(\Omega)$  be the extension by 0 of  $R_2(\sigma_d)$  in  $\Omega_1$ . Let us introduce the affine space

$$\mathcal{H}(\sigma_d) = H^1(\Omega) + \tilde{R}_2(\sigma_d) \subset \mathcal{H}_1 \times \mathcal{H}_2.$$

By construction, all functions of  $\mathcal{H}$  satisfies the jump condition  $[v] = \sigma_d$  and we easily see that  $v \in \mathcal{H}(\sigma_d)$  is solution of (2.51) if and only if the new unknown  $u := v - \tilde{R}_2(\sigma_d) \in H^1(\Omega)$  is solution of the variational problem

$$\begin{cases} \text{Find } u \in H^1(\Omega) \text{ such that for any } u^t \in H_1(\Omega) \\ \int_{\Omega} \mu^{-1} \nabla u \cdot \nabla \bar{u}^t - k^2 \int_{\Omega} \epsilon u \bar{u}^t - ik \int_{\Gamma} \eta^{-1} u \bar{u}^t = \langle \sigma_n, u^t \rangle_{\Sigma} - \mathcal{L}_{\sigma_d}(\bar{u}^t), \end{cases} \quad (2.53)$$

where  $\mathcal{L}_{\sigma_d}$  is the antilinear form on  $H(\Omega)$  defined by

$$\mathcal{L}_{\sigma_d}(\bar{u}^t) = \int_{\Omega_2} \mu^{-1} \nabla R_2(\sigma_d) \nabla \bar{u}^t - k^2 \int_{\Omega} \epsilon R_2(\sigma_d) \bar{u}^t - ik \int_{\Gamma} \eta^{-1} R_2(\sigma_d) \bar{u}^t. \quad (2.54)$$

Note that the right hand side of (2.53) defines a continuous linear form on  $H^1(\Omega)$  (and thus an element  $f \in H^{-1}(\Omega)$ ). Therefore, (2.53) is nothing but the weak formulation of (1.1) with this particular  $f$ . One concludes then from the well-posedness of (1.1).  $\square$

Thanks to (2.13), (2.15) and Remark 2.4,  $T_R = \Lambda^* \Lambda$  with  $\Lambda$  an isomorphism from  $H^{\frac{1}{2}}(\Sigma)$  onto  $L^2(\Sigma)$ . As a consequence, we can equip  $H^{-\frac{1}{2}}(\Sigma)$  with the particular norm

$$\|\varphi\|_{-\frac{1}{2}}^2 := \langle \varphi, T_R^{-1} \varphi \rangle_{\Sigma} \equiv \|(\Lambda^*)^{-1} \varphi\|_{L^2(\Sigma)}^2, \quad (2.55)$$

and accordingly  $X$  with the Hilbert space norm

$$\|x\|^2 = \|x_1\|_{-\frac{1}{2}}^2 + \|x_2\|_{-\frac{1}{2}}^2. \quad (2.56)$$

The second important property of  $A$  is given by the following Lemma.

**Lemma 2.8.** *Provided (2.13), (2.15), the operator  $A$  is contracting in  $X$  for the norm  $\|\cdot\|$  defined by (2.56).*

*Proof.* As  $\Pi$  is unitary, the result will be a consequence of

$$\forall \varphi \in H^{-\frac{1}{2}}(\Sigma), \varphi \neq 0, \quad \|S_1 \varphi\|_{-\frac{1}{2}} = \|\varphi\|_{-\frac{1}{2}}, \quad \|S_2 \varphi\|_{-\frac{1}{2}} < \|\varphi\|_{-\frac{1}{2}}. \quad (2.57)$$

We shall prove the result concerning  $S_2$ , the proof for  $S_1$  being almost the same.

By definition of  $E_2$  (see Sect. 2.2.1) and  $S_2$  (see (2.40)), the function  $v_2 = E_2 \varphi \in \mathcal{H}_2$  satisfies

$$\begin{cases} \operatorname{div}(\mu^{-1} \nabla v_2) + k^2 \epsilon v_2 = 0, & \text{in } \Omega_2 \\ \mu^{-1} \partial_\nu v_2 + ik \eta^{-1} v_2 = 0, & \text{on } \Gamma \\ \mu^{-1} \partial_{\nu_2} v_2 + ik T^* v_2 = \varphi & \text{on } \Sigma \end{cases}, \quad (2.58)$$

and  $S_2 \varphi = -\varphi + 2ik T_R v_2$ . From  $\|-\varphi + 2ik T_R v_2\|^2 = \|\varphi\|^2 + 4k \|T_R v_2\|^2 - 4k \operatorname{Im}(\varphi, T_R v_2)$ , and we thus have

$$\|S_2 \varphi\|_{-\frac{1}{2}}^2 - \|\varphi\|_{-\frac{1}{2}}^2 = 4k (T_R v_2, T_R v_2)_{-\frac{1}{2}} - 4k \operatorname{Im}(\varphi, T_R v_2)_{-\frac{1}{2}}. \quad (2.59)$$

By definition of the scalar product  $(\cdot, \cdot)_{-\frac{1}{2}}$  (see (2.55)), this turns into

$$\|S_2 \varphi\|_{-\frac{1}{2}}^2 - \|\varphi\|_{-\frac{1}{2}}^2 = 4k^2 \langle T_R v_2, v_2 \rangle_\Sigma - 4k \operatorname{Im} \langle \varphi, v_2 \rangle_\Sigma. \quad (2.60)$$

Now, we note that  $v_2$  satisfies to

$$k^2 \int_{\Omega_2} \epsilon |v_2|^2 - \int_{\Omega_2} \mu^{-1} |\nabla v_2|^2 + ik \int_\Gamma \eta^{-1} |v_2|^2 + ik \langle T v_2, v_2 \rangle_\Sigma = \langle \varphi, v_2 \rangle_\Sigma, \quad (2.61)$$

remembering that  $T = T_R + iT_I$  with  $T_I$  symmetric, so that  $\langle T_I v_2, v_2 \rangle_\Sigma$  is always real, we get

$$\operatorname{Im} \langle \varphi, v_2 \rangle_\Sigma = k \int_\Gamma \eta^{-1} |v_2|^2 + k \langle T_R v_2, v_2 \rangle_\Sigma, \quad (2.62)$$

and finally,

$$\|S_2 \varphi\|_{-\frac{1}{2}}^2 - \|\varphi\|_{-\frac{1}{2}}^2 = -4k^2 \int_\Gamma \eta^{-1} |v_2|^2 < 0. \quad (2.63)$$

The last inequality is strict because  $v_2$  cannot vanish on  $\Gamma$ . If it were the case, by the boundary condition on  $\Gamma$  in (2.58) and unique continuation,  $v_2$  would vanish in  $\Omega_2$ , contradicting the boundary condition on  $\Sigma$  for  $\varphi \neq 0$ . The proof for  $S_1$  follows the same lines. The only difference is that there is no contribution of the other boundary  $\Gamma_0$  because of the Dirichlet Boundary condition: (2.63) becomes an equality and  $S_1$  is an isometry.  $\square$

**Remark 2.9.** It is important to note that we have implicitly used the fact the operators on each side of the interface  $T$  and  $T'$  (see (1.9)) are adjoint, namely  $T' = T^*$ . The proof would not be valid otherwise, as the operator  $T_R$  appearing in (2.60) would be replaced by  $T + T'$  and one could not use (2.62) to conclude.

The proof of the exponential convergence then follows from the estimate (proven below)

$$\tau_r := \|A_r\| \equiv \|(1-r)I + rA\| < 1. \quad (2.64)$$

To prove (2.64), we apply the well-known Hilbert space identity:

$$\forall (x, y) \in X^2, \quad \|(1-r)x + ry\|^2 = (1-r)\|x\|^2 + r\|y\|^2 - r(1-r)\|x-y\|^2 \quad (2.65)$$

with  $y = Ax$ , we deduce from (2.43)

$$\|A_r x\|^2 = (1-r)\|x\|^2 + r\|Ax\|^2 - r(1-r)\|(I-A)x\|^2. \quad (2.66)$$

Using Lemma 3, we deduce that

$$\|A_r x\|^2 \leq \|x\|^2 - r(1-r)\|(I-A)x\|^2 \quad (2.67)$$

while, from Lemma 2.6, there exists a constant  $\delta > 0$  such that

$$\forall x \in X, \quad \|(I-A)x\| \geq \delta \|x\| \quad (2.68)$$

with, moreover,  $\delta \leq 2$  given that  $A$  is a contraction (Lemma 2.8). Therefore, we infer that

$$\|A_r x\|^2 \leq \|x\|^2 - r(1-r)\delta^2 \|x\|^2. \quad (2.69)$$

This means that  $\|A_r\| \leq \sqrt{1-r(1-r)\delta^2} < 1$ .

By (2.38) and (2.43),  $u_{1,n} - u_1 = E_1(A_r^n \varepsilon_{1,0})$  and  $u_{2,n} - u_2 = E_2(A_r^n \varepsilon_{2,0})$ . Using the inequality  $\|A_r^n\| \leq \|A_r\|^n$ , we obtain (2.16) with  $C = \max\{\|E_1\|, \|E_2\|\}$ .

This concludes the proof of Theorem 2.1. First let us note that this proof can be extended to many subdomains at the price of heavier notations, provided that the interfaces do not cross. One can wonder why this proof cannot be extended directly to the case of many non strip subdomains. If one look carefully at the proof, the blocking point is Lemma 2.7, and more precisely the lifting operator does not exist when crossing points are present.

### 3. CONSTRUCTION OF APPROPRIATE OPERATORS $T$

In this paper, we shall restrict ourselves to the case where the operator  $T_I$  is proportional to  $T_R$

$$T_I = \gamma T_R, \quad \gamma \in \mathbb{R} \quad \text{which is equivalent to} \quad T = z T_R, \quad \text{with } z = 1 + i\gamma. \quad (3.1)$$

Our main concern here will be to construct an operator  $T_R$  satisfying the properties namely (2.13) and (2.15), required for the theory of Section 2 to be applicable. Above these theoretical considerations, its construction is also guided by practical considerations: the ease of the numerical approximations of such operator as well as the low cost of its evaluation.

In the sequel, we propose several solutions that all rely on integral operators (of convolution type) with a singular kernel (at the origin), the key point being that the singularity is imposed by condition (2.15) : roughly speaking,  $T_R$  must be a pseudo-differential operator of order 1. We shall consider two strategies which are more or less equivalent from the theoretical point of view, but will lead to different options when the numerical approximation will be concerned.

#### 3.1. Strategy 1: Direct definition of the operator $T_R$

##### 3.1.1. Strategy 1 (i): Constructing $T_R$ from Gagliardo's semi-norms

We shall define the operator  $T_R$  through the corresponding bilinear form in  $H^{\frac{1}{2}}(\Sigma)$  that is moreover well-suited for finite element approximation. One of the most natural choice (proposed by Xavier Claeys) is related to the integral representation of  $H^{\frac{1}{2}}(\Sigma)$  semi-norms known, depending on the authors, as the Gagliardo's semi-norms (see for instance [1], [8], [6]) or as the Sobolev-Slobodetskii semi-norms ([16] or [12]). Given  $\alpha$  and  $\beta$  positive numbers, a first choice for the operator  $T_R$  is

$$\langle T_R \varphi, \psi \rangle_\Sigma := \alpha \int_\Sigma \varphi(x) \bar{\psi}(x) \, d\sigma(x) + \frac{\beta}{2\pi k} \int_\Sigma \int_\Sigma \frac{(\varphi(x) - \varphi(y))(\bar{\psi}(x) - \bar{\psi}(y))}{|x - y|^{d+1}} \, d\sigma(x) d\sigma(y), \quad (3.2)$$

where we have chosen to put the  $\frac{1}{k}$  factor so that  $\alpha$  and  $\beta$  are dimensionless quantities.

This operator is non local and its evaluation is thus computationally heavy. That is why we propose a quasi local version through the introduction of a characteristic length  $L$ , and a given cut-off function  $\chi(\rho) \in L^\infty(\mathbb{R}^+)$  satisfying typically

$$0 \leq \chi(\rho) \leq 1, \quad \chi(\rho) = 1 \text{ for } \rho \leq \frac{1}{2}, \quad \chi(\rho) = 0 \text{ for } \rho \geq 1. \quad (3.3)$$

We consider

$$\langle T_{R,L} \varphi, \psi \rangle_\Sigma := \alpha \int_\Sigma \varphi(x) \bar{\psi}(x) \, d\sigma(x) + \frac{\beta}{2\pi k} \int_\Sigma \int_\Sigma \chi\left(\frac{|x - y|}{L}\right) \frac{(\varphi(x) - \varphi(y))(\bar{\psi}(x) - \bar{\psi}(y))}{|x - y|^{d+1}} \, d\sigma(x) d\sigma(y). \quad (3.4)$$

The quasi locality of such  $T_{R,L}$ 's appears when  $L \ll \text{diam}(\Sigma)$  through the following property

$$\text{dist}(\text{supp } \varphi, \text{supp } \psi) \geq L \implies \langle T_{R,L} \varphi, \psi \rangle_\Sigma = 0, \quad (3.5)$$

which implies

$$\text{supp } \varphi \subset B(x_0, R) \implies \text{supp } T_{R,L} \varphi \subset B(x_0, R + L). \quad (3.6)$$

Note that this operator still satisfies the desired theoretical properties (2.13) and (2.15). Indeed, the symmetry of  $T_{R,L}$  is obvious from (3.4) while the injectivity and the continuity are consequences of the double inequality

$$\alpha \|\varphi\|_{L^2(\Sigma)}^2 \leq \langle T_{R,L} \varphi, \varphi \rangle_\Sigma \leq \langle T_R \varphi, \varphi \rangle_\Sigma. \quad (3.7)$$

One can then conclude thanks to the following theorem

**Theorem 3.1.** *The positive and symmetric operator  $T_{R,L}$  defined by (3.4) is an isomorphism from  $H^{\frac{1}{2}}(\Sigma)$  onto  $H^{-\frac{1}{2}}(\Sigma)$ .*

*Proof.* Writing

$$T_{R,L} = \left[ I - (T_R - T_{R,L}) T_R^{-1} \right] T_R, \quad (3.8)$$

since  $T_R$  is an isomorphism from  $H^{\frac{1}{2}}(\Sigma)$  onto  $H^{-\frac{1}{2}}(\Sigma)$ , it suffices to show that

$$\text{the operator } I - (T_R - T_{R,L}) T_R^{-1} \text{ is an isomorphism in } H^{-\frac{1}{2}}(\Sigma).$$

Since its injectivity is deduced from the one of  $T_R$ , it suffices to show that

$$K_r := (T_R - T_{R,L}) T_R^{-1} \text{ is compact in } H^{-\frac{1}{2}}(\Sigma), \quad (3.9)$$

and to conclude *via* Fredholm's alternative. Since the function

$$(x, y) \mapsto \left( 1 - \chi(|x - y|/L) \right) |x - y|^{-(d+1)} \quad (3.10)$$

is bounded on  $\Sigma \times \Sigma$  by  $C(L) > 0$ , we have

$$\left| \langle (T_R - T_{R,L}) \varphi, \psi \rangle_\Sigma \right| \leq C(L) (\text{meas } \Sigma) \|\varphi\|_{L^2(\Sigma)} \|\psi\|_{L^2(\Sigma)} \quad (3.11)$$

which means that the operator  $T_R - T_{R,L}$  is continuous in  $L^2(\Sigma)$

$$\forall \varphi \in H^{\frac{1}{2}}(\Sigma), \quad \|(T_R - T_{R,L})\varphi\|_{L^2(\Sigma)} \leq C(L) (\text{meas } \Sigma) \|\varphi\|_{L^2(\Sigma)}. \quad (3.12)$$

Next, let  $\psi_n$  be a bounded sequence in  $H^{-\frac{1}{2}}(\Sigma)$ , then  $\varphi_n := T_R^{-1}\psi_n$  is bounded in  $H^{\frac{1}{2}}(\Sigma)$ . By compactness of the embedding of  $H^{\frac{1}{2}}(\Sigma)$  in  $L^2(\Sigma)$ , we can assume that, up to the extraction of a subsequence,  $\varphi_n$  is strongly convergent in  $L^2(\Sigma)$ . Thus,  $(T_R - T_{R,L})\varphi_n \equiv K_r \psi_n$  converges strongly in  $L^2(\Sigma)$ , *a fortiori* in  $H^{-\frac{1}{2}}(\Sigma)$ . This concludes the proof.  $\square$

### 3.1.2. Strategy 1 (ii): Constructing $T_R$ from potential theory

We can also use an approach which is more familiar to specialists of boundary integral equations which is *a priori* effective in the cases of practical interest, namely when  $d = 1, 2$ . More precisely, for  $(\varphi, \psi) \in W^{1,\infty}(\Sigma)$  we can define

$$d = 1: \quad \langle T_R \varphi, \psi \rangle_\Sigma := \alpha \int_\Sigma \varphi(x) \bar{\psi}(x) \, d\sigma(x) + \frac{\beta}{\pi k} \int_\Sigma \int_\Sigma \log \left( \frac{1}{|x - y|} \right) \partial_\tau \varphi(x) \partial_\tau \bar{\psi}(y) \, d\sigma(x) d\sigma(y), \quad (3.13)$$

$$d = 2: \quad \langle T_R \varphi, \psi \rangle_\Sigma := \alpha \int_\Sigma \varphi(x) \bar{\psi}(x) \, d\sigma(x) + \frac{\beta}{\pi k} \int_\Sigma \int_\Sigma \frac{\text{rot}_\Sigma \varphi(x) \cdot \text{rot}_\Sigma \bar{\psi}(y)}{|x - y|} \, d\sigma(x) d\sigma(y), \quad (3.14)$$

where, when  $d = 2$ ,  $\text{rot}_\Sigma$  is the usual surfacic curl-operator. From potential theory, we know that these operators are positive and self adjoint, as soon as  $\alpha$  and  $\beta$  are positive. More precisely,  $T_R = \alpha I + \frac{\beta}{\pi k} \mathcal{T}$ , where the operator  $\mathcal{T}$  is defined by

$$\forall \varphi \in H^{\frac{1}{2}}(\Sigma), \quad \mathcal{T} \varphi = u_\varphi|_\Sigma, \quad (3.15)$$

where  $u_\varphi$  is the unique solution in  $W_0^1(\mathbb{R}^d \setminus \Sigma)$  (see [17]) of the jump problem

$$\begin{cases} -\Delta u_\varphi = 0, & \text{in } \mathbb{R}^d \\ [u_\varphi] = \varphi, \quad [\partial_\nu u_\varphi] = 0, & \text{on } \Sigma \end{cases}. \quad (3.16)$$



Indeed, using Green's formula, one easily establishes that

$$\langle T\varphi, \psi \rangle_\Sigma = \int_{\mathbb{R}^d \setminus \Sigma} \nabla u_\varphi \nabla \bar{u}_\psi \, dx. \quad (3.17)$$

From the above property and trace theorem, it is immediate to prove the

**Theorem 3.2.** *The positive and symmetric operator  $T_R$  defined by (3.13) if  $d = 1$ , or (3.14) if  $d = 2$ , is an isomorphism from  $H^{\frac{1}{2}}(\Sigma)$  onto  $H^{-\frac{1}{2}}(\Sigma)$ .*

One practical advantage to use this operator  $T_R$  defined by (3.13) or (3.14), is that it has already been implemented in many codes for boundary integral equations. One disadvantage is that it is difficult to propose a truncation process analogous to the one proposed previously in (3.4) that preserves the positivity of the operator. This is one of the motivation for proposing the second strategy.

### 3.2. Strategy 2: Definition of operator $T_R$ through an operator $\Lambda$ with $T_R = \Lambda^* \Lambda$

We do not have to take care of the positivity of  $T_R$ , which is automatic, and only need to construct  $\Lambda$  as an isomorphism from  $H^{\frac{1}{2}}(\Sigma)$  in  $L^2(\Sigma)$ , that is to say a pseudo-differential operator of order  $1/2$ .

#### 3.2.1. Strategy 2 (i): Constructing $\Lambda$ from Gagliardo's semi-norms

According to the first strategy for the direct construction of  $T_R$ , the most natural idea is to take

$$\langle \Lambda \varphi, \psi \rangle_\Sigma := \alpha \int_\Sigma \varphi(x) \bar{\psi}(x) \, d\sigma(x) + \frac{\beta}{\sqrt{k}} \int_\Sigma \int_\Sigma \frac{(\varphi(x) - \varphi(y))(\bar{\psi}(x) - \bar{\psi}(y))}{|x - y|^{d+\frac{1}{2}}} \, d\sigma(x) \, d\sigma(y), \quad (3.18)$$

with  $\alpha \in \mathbb{R}_*^+$  and  $\beta \in \mathbb{C} \setminus \mathbb{R}^-$ . From the definition of the  $H^{1/4}$ -norm, this defines an operator with the property

$$\Lambda \in \mathcal{L}(H^{1/4}(\Sigma), H^{-1/4}(\Sigma)). \quad (3.19)$$

In some sense,  $\Lambda$  is a pseudo-differential operator of order  $1/2$  and one can expect that it maps continuously

$$H^{\frac{1}{2}}(\Sigma) \text{ into } L^2(\Sigma). \quad (3.20)$$

We did not succeed in finding explicitly such a result in the literature but have been able to prove it when  $d = 1$ .

**Lemma 3.3.** *Assume that  $d = 1$ ,  $\alpha > 0$  and  $\beta \in \mathbb{C} \setminus \mathbb{R}^-$  and let  $\Sigma$  be smooth enough, then  $\Lambda$  defined by (3.18) is an isomorphism from  $H^{\frac{1}{2}}(\Sigma)$  into  $L^2(\Sigma)$ .*

*Proof.* See Appendix 1 where we are more precise about the regularity of  $\Sigma$ . □

In order to construct an operator  $\Lambda$  which is quasi-local in the sense defined in Section 3.1.1, we introduce again the cut-off function  $\chi$ , see (3.3), a length  $L$  and consider

$$\langle \Lambda_L \varphi, \psi \rangle_\Sigma := \alpha \int_\Sigma \varphi(x) \bar{\psi}(x) \, d\sigma(x) + \frac{\beta}{\sqrt{k}} \int_\Sigma \int_\Sigma \chi\left(\frac{|x - y|}{L/2}\right) \frac{(\varphi(x) - \varphi(y))(\bar{\psi}(x) - \bar{\psi}(y))}{|x - y|^{d+\frac{1}{2}}} \, d\sigma(x) \, d\sigma(y). \quad (3.21)$$

With the same compact perturbation technique than for the operator  $T_{R,L}$  defined by (3.4), we can prove the

**Theorem 3.4.** *If  $\Lambda$  is an isomorphism from  $H^{\frac{1}{2}}(\Sigma)$  into  $L^2(\Sigma)$ , the operator  $\Lambda_L$  defined by (3.21) is an isomorphism from  $H^{\frac{1}{2}}(\Sigma)$  onto  $L^2(\Sigma)$ .*

**Remark 3.5.** By comparing (3.4) and (3.21), the reader will notice that, passing from the definition of  $T_{R,L}$  in the first strategy to the construction of  $\Lambda_L$  here, we replace  $L$  by  $L/2$ . The reason is that, with this choice, the “locality property” (3.6) still holds for  $T_{R,L} := \Lambda_L^* \Lambda_L$ .

### 3.2.2. Strategy 2 (ii): Constructing $\Lambda$ from potential theory

For  $(\varphi, \psi) \in W^{1,\infty}(\Sigma)$  we can define

$$\langle \Lambda \varphi, \psi \rangle_\Sigma := \alpha \int_\Sigma \varphi(x) \bar{\psi}(x) \, d\sigma(x) + \frac{\beta}{\sqrt{k}} \int_\Sigma \int_\Sigma \frac{\text{rot}_\Sigma \varphi(x) \cdot \text{rot}_\Sigma \bar{\psi}(y)}{|x - y|^{d-\frac{3}{2}}} \, d\sigma(x) d\sigma(y) \quad (3.22)$$

where, when  $d = 2$ ,  $\text{rot}_\Sigma$  is the usual surfacic curl-operator (see [17] for instance) while, when  $d = 1$ , one has to understand  $\text{rot}_\Sigma \equiv \partial_\tau$  where  $\partial_\tau$  is the 1D-tangential derivative.

**Remark 3.6.** It is easy to explain where (3.22) comes from in the case where  $\Sigma = \mathbb{R}^d$ . Noting  $\widehat{\varphi}(\xi)$  the Fourier transform of  $\varphi(x)$ , then using the definition of Sobolev norms *via* Fourier transforms, a typical isomorphism from  $H^{\frac{1}{2}}(\Sigma)$  into  $L^2(\Sigma)$  is

$$\widehat{\Lambda \varphi}(\xi) = 1 + |\xi|^{\frac{1}{2}} = 1 + |\xi|^{-\frac{3}{2}} |\xi|^2, \quad (3.23)$$

then denoting  $K_d$  the inverse Fourier transform of  $|\xi|^{-\frac{3}{2}}$ , which is nothing but a weakly singular kernel in  $L^1(\Sigma)$ . More precisely this is the so-called Riesz kernel defined by

$$K_d = C_d |x|^{d-\frac{3}{2}}, \quad (3.24)$$

for some positive constant  $C_d$ . Then, using the property of the Fourier transform with respect to the convolution, the operator  $\Lambda$  can be formally written as (see [20])

$$\Lambda = I + K_d * \Delta. \quad (3.25)$$

It is readily seen that the bilinear form associated to  $\Lambda$  is of the form (3.22) with  $\alpha = 1$  and  $\beta = C_d$ . The operator  $\Lambda^{(0)}$  defined by (3.22) is thus a generalization of (3.25). Let us emphasize here that it is the singularity of the kernel that determines the order of the operator  $\Lambda$  (as pseudo-differential operator).

In the sequel, we shall restrict ourselves to parameters  $\alpha$  and  $\beta$  verifying

$$\alpha \neq 0, \quad \beta \in i\mathbb{R}. \quad (3.26)$$

Under this assumption, we can state the equivalent of Lemma 3.3 for  $\Lambda$  defined by (3.22).

**Lemma 3.7.** *Assume that  $d = 1$ ,  $\Sigma$  is smooth enough, and that (3.26) holds, then  $\Lambda$  defined by (3.22) is an isomorphism from  $H^{\frac{1}{2}}(\Sigma)$  into  $L^2(\Sigma)$ .*

*Proof.* The proof is similar to the one of Lemma 3.3 (or even easier) and will be omitted here. Let us emphasize here that (3.26) is used to ensure the injectivity of  $\Lambda$ .

Indeed, since  $\int_\Sigma \int_\Sigma \frac{\text{rot}_\Sigma \varphi(x) \cdot \text{rot}_\Sigma \bar{\psi}(y)}{|x - y|^{d-\frac{3}{2}}} \, d\sigma(x) d\sigma(y) \in \mathbb{R}$  and  $\beta \in i\mathbb{R}$ ,  $\text{Re} \langle \Lambda \varphi, \varphi \rangle = \alpha \int_\Sigma |\varphi|^2$ .  $\square$

Analogously to what we did in Section 3.1, we can propose the following truncated operator

$$\langle \Lambda_L \varphi, \psi \rangle_\Sigma := \alpha \int_\Sigma \varphi(x) \bar{\psi}(x) \, d\sigma(x) + \frac{\beta}{\sqrt{k}} \int_\Sigma \int_\Sigma \chi \left( \frac{|x - y|}{L/2} \right) \frac{\text{rot}_\Sigma \varphi(x) \cdot \text{rot}_\Sigma \bar{\psi}(y)}{|x - y|^{d-\frac{3}{2}}} \, d\sigma(x) d\sigma(y). \quad (3.27)$$

Again, Theorem 3.4 is still valid for the operators  $\Lambda$  and  $\Lambda_L$  defined by (3.22) and (3.27).

TABLE 1. Summary of the different strategies.

	Strategy 1: direct construction of $T_R$		Strategy 2: construction of $T_R$ via $\Lambda$	
	via Sobolev norms	via Potential theory	via Sobolev norms	via Potential theory
Fully non local	(3.2)	(3.13) or (3.14)	(3.18)	(3.22)
With localization	(3.4)	No truncation process with guaranteed positivity	(3.21)	(3.27)

### 3.3. Summary of the section and practical aspects

In this section, we have presented several options regarding the construction of appropriate operators for our domain decomposition method, all based on integral operators. These options are summarized in Table 1.

On the theoretical point of view, they all are very similar. However, if one keeps the numerical point of view in mind, a few differences appear.

- Some choices allow for a truncation process with guaranteed convergence (that is to say, preserving the properties of positivity of  $T_{R,L}$ ) which is quite valuable since the discretization of the transmission operator would then lead to sparse matrices, with a much reduced cost (of storage first, but also of CPU time). This will be discussed in more details, in our particular case, in Section 5.4.
- Constructing  $T$  or  $\Lambda$ . The operators  $\Lambda$  are more regular than the operators  $T$ , as they are pseudo-differential operators of order  $\frac{1}{2}$ . The corresponding kernels are less singular and thus they are easier to evaluate numerically, but they require the use of additional unknowns  $\varphi = \Lambda u$ , to take into account that  $Tu = \Lambda^* \varphi = \Lambda^* \Lambda u$ .

## 4. MODAL ANALYSIS WITH CIRCULAR SYMMETRY: THEORETICAL RESULTS

The model problem is presented in Figure 2. It represents the scattering by a perfectly conducting circular obstacle of radius  $R_1$ . The computational domain  $\Omega$  is bounded by a first order absorbing boundary condition at  $r = R_2$ . We assume that the medium is homogeneous with  $\epsilon = \mu = 1$ . The domain  $\Omega$  is split into two subdomains by a circular interface  $\Sigma$  of radius  $R$ . Our objective in this section is to illustrate and quantify the convergence Theorem 2.1 in the case where the operator  $T$  is supposed to be diagonalized in the Fourier basis. This is the object of Section 4.1. With this analysis, we can explain in Section 4.2 why one cannot achieve exponential convergence with Padé-like operators. Finally, in Section 4.3 we consider the particular case of the non local operators introduced in Section 3, when we do not apply any truncation process, in other words, when we consider the operators  $T = (1 + i\gamma) T_R$ , where  $T_R$  is given by (3.2) or (3.13 or 3.14), or  $T = (1 + i\gamma) \Lambda^* \Lambda$ , where  $\Lambda$  is given by (3.18) or (3.22).

### 4.1. Quantitative error analysis

#### 4.1.1. Reduction of the operator $A_r$ to a countable family of $2 \times 2$ matrices

Using Fourier series theory, we can represent the space  $X$  as an hilbertian sum

$$X = \bigoplus_{m \in \mathbb{Z}} X_m, \quad X_m = \{x_m e^{im\theta}, \quad x_m = (x_{1,m}, x_{2,m}) \in \mathbb{C}^2\}. \quad (4.1)$$

The operator  $T$  is assumed to be diagonalizable in the basis  $\{e^{im\theta}\}_{m \in \mathbb{Z}}$

$$T e^{im\theta} = t_m e^{im\theta}, \quad \text{with} \quad |t_m| < C|m| \quad \text{and} \quad \mathcal{R}e(t_m) > 0. \quad (4.2)$$

Note that the properties on  $t_m$  follows from (2.13). We shall also assume that

$$t_{-m} = t_m. \quad (4.3)$$

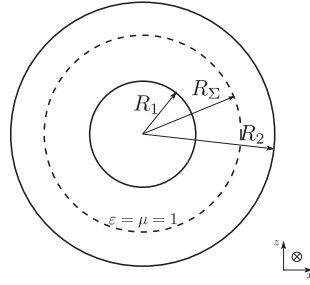


FIGURE 2. Geometry of the problem for the modal analysis. The dotted circle of radius  $R$  is the transmission interface splitting the domain.

We shall see later that the properties (4.2), (4.3) are shared by all the operators introduced in section 3. This allows for separation of variable in polar coordinates and shows that each space  $X_m$  is invariant by the operators  $S$  and  $\Pi$ , whose restrictions to  $X_m$  are represented  $2 \times 2$  matrices, namely

$$\Pi_m = \begin{bmatrix} 0 & 1 \\ 1 & 0 \end{bmatrix}, \quad S_m = \begin{bmatrix} s_{1,m} & 0 \\ 0 & s_{2,m} \end{bmatrix}, \quad (4.4)$$

where one computes that (we omit details that are classical)

$$s_{1,m} = -\frac{d_{1,m} - i\bar{t}_m}{d_{1,m} + it_m}, \quad s_{2,m} = -\frac{d_{2,m} - it_m}{d_{2,m} + i\bar{t}_m}, \quad (4.5)$$

where the complex numbers  $d_{1,m}$  and  $d_{2,m}$  are actually associated to the Dirichlet-to-Neumann operator (on  $\Sigma$ ) respectively for the interior domain  $\Omega_1$  and the exterior domain  $\Omega_2$ . They are given by

$$\begin{cases} d_{1,m} = \frac{J_m(kR_1)Y'_m(kR) - Y_m(kR_1)J'_m(kR)}{J'_m(kR_1)Y_m(kR) - Y'_m(kR_1)J_m(kR)}, \\ d_{2,m} = -\frac{(J'_m(kR_2) + iJ_m(kR_2))Y'_m(kR) - (Y'_m(kR_2) + iY_m(kR_2))J'_m(kR)}{(J'_m(kR_2) + iJ_m(kR_2))Y_m(kR) - (Y'_m(kR_2) + iY_m(kR_2))J_m(kR)}. \end{cases} \quad (4.6)$$

where  $(J_m(x), Y_m(x))$  are the usual first and second kind Bessel functions. It is worth mentioning the following properties of the numbers  $s_{1,m}$ ,  $s_{2,m}$ , which simply are a particular case of (2.57) for our geometry and  $\varphi = e^{im\theta}$ .

$$|s_{1,m}| = 1, \quad |s_{2,m}| < 1. \quad (4.7)$$

Since  $d_{1,m}$  is real,  $|s_{1,m}| = 1$  is obvious and  $s_{2,m} < 1$  can be shown from the positiveness of the Wronskian of Bessel functions (see details in [15]). As a consequence of the above properties, we deduce that the operator  $A_r$  is block diagonal with respect to the hilbertian sum (4.1) and thus completely represented by a countable family of two by two matrices

$$A_{r,m} = (1-r)I + rA_m, \quad \text{with} \quad A_m = \Pi_m S_m. \quad (4.8)$$

#### 4.1.2. Estimation of the convergence rate of the method

The convergence of the method is governed by the norm in  $X$ , of the  $n$ th power of the operator  $A_r$ . A first naive estimate of the error is obtained by proceeding as in the abstract proof (see Sect. 2.2.2) using the inequality

$$\|A_r^n\| \leq \|A_r\|^n, \quad (4.9)$$

and then by computing  $\|A_r\|$ . However, the resulting estimate would not be optimal because of the inequality (4.9), which is not an equality because the matrix  $A_r$  is not normal. That is why a more accurate approach consists in directly estimating the norm  $\|A_r^n\|$  given by

$$\|A_r^n\| = \sup_m |A_{r,m}^n|_2, \quad |A_{r,m}^n|_2 := \sup_{|x|=1} |A_{r,m}^n x|, \quad (4.10)$$

where  $|\cdot|_2$  is the matrix norm subordinate to the euclidian norm  $|\cdot|$  in  $\mathbb{C}^2$ . In order to use (4.10), we should use the well-known fact that

$$|A_{r,m}^n|_2 = [\lambda_{\max}((A_{r,m}^n)^*(A_{r,m}^n))]^{\frac{1}{2}}, \quad (4.11)$$

where for a positive hermitian matrix  $B$ ,  $\lambda_{\max}(B)$  is the largest eigenvalue of  $B$ . However, such a computation appears to be heavy and hardly tractable, and we shall restrict ourselves to propose an upper bound for  $|A_{r,m}|_2$ , which however appears to be optimal in some sense in view of the lower bound (4.15). This estimate, as can be expected, involves the two eigenvalues of the matrix  $A_{r,m}$ , which are nothing but

$$\tau_{r,m,\pm} = (1-r) \pm r\sqrt{s_{1,m}s_{2,m}}, \quad \operatorname{Re} \sqrt{s_{1,m}s_{2,m}} \geq 0. \quad (4.12)$$

Let us set

$$\tau_{r,m} = \max\{|\tau_{r,m,+}|, |\tau_{r,m,-}|\} = |\tau_{r,m,+}|, \quad (4.13)$$

(the verification of  $\max\{|\tau_{r,m,+}|, |\tau_{r,m,-}|\} = |\tau_{r,m,+}|$  comes from the choice of the determination of the complex square root). Due to assumption (4.3), Formulas (4.5), (4.6) and Property (4.7), we see immediately that

$$\forall m \in \mathbb{Z}, \quad 0 < \tau_{r,m} < 1, \quad \text{and} \quad \tau_{r,-m} = \tau_{r,m}. \quad (4.14)$$

We have an obvious lower bound for  $|A_{r,m}^n|_2$ , namely

$$|A_{r,m}^n|_2 \geq \tau_{r,m}^n. \quad (4.15)$$

The upper bound is provided by the

**Lemma 4.1.** *We have the estimate*

$$\forall n \geq 0, \quad |A_{r,m}^n|_2 \leq (\tau_{r,m} + rn) \tau_{r,m}^{n-1}. \quad (4.16)$$

*Proof.* The proof is technical and can be skipped in a first read. By continuity of  $A_{r,m}$  with respect to  $s_{2,m}$ , it suffices to prove Lemma 4.1 for  $s_{2,m} \neq 0$ . When  $s_{2,m} \neq 0$  the two eigenvalues (4.12) of  $A_{r,m}$  are distinct. Thus  $A_{r,m}$  is diagonalizable (indices  $m$  and  $r$  are omitted in  $\tau_{\pm}$ )

$$A_{r,m}^n = P_m \begin{bmatrix} \tau_+^n & 0 \\ 0 & \tau_-^n \end{bmatrix} P_m^{-1}, \quad P_m = \begin{bmatrix} \sqrt{s_{1,m}} & -\sqrt{s_{1,m}} \\ \sqrt{s_{2,m}} & \sqrt{s_{2,m}} \end{bmatrix}. \quad (4.17)$$

From that, we easily compute that (setting  $\alpha_m = \sqrt{s_{1,m}/s_{2,m}}$  and noting that  $|\alpha_m| > 1$ )

$$A_{r,m}^n = \frac{\tau_+^n + \tau_-^n}{2} \begin{bmatrix} 1 & 0 \\ 0 & 1 \end{bmatrix} + \frac{\tau_+^n - \tau_-^n}{2} B_m, \quad B_m = \begin{bmatrix} 0 & \alpha_m \\ \alpha_m^{-1} & 0 \end{bmatrix} \quad (4.18)$$

We deduce a bound for the  $L^2$  norm of  $A_{r,m}^n$  as follows

$$|A_{r,m}^n|_2 \leq \left| \frac{\tau_+^n + \tau_-^n}{2} \right| + \left| \frac{\tau_+^n - \tau_-^n}{2} \right| |B_m|_2 = \left| \frac{\tau_+^n + \tau_-^n}{2} \right| + \left| \frac{\tau_+^n - \tau_-^n}{2} \right| |\alpha_m|, \quad (4.19)$$

where we have used that  $B_m^* B_m$  is diagonal with eigenvalues  $|\alpha_m|^2 > |\alpha_m|^{-2}$  so that  $|B_m|_2 = |\alpha_m|$ . Since  $\tau_+^n - \tau_-^n = (\tau_+ - \tau_-) \sum_{k=0}^{n-1} \tau_-^k \tau_+^{n-1-k}$  and  $|\tau_+| > |\tau_-|$ , we have

$$|A_{r,m}^n|_2 \leq |\tau_+|^n + n \left| \alpha_m \frac{\tau_+ - \tau_-}{2} \right| |\tau_+|^{n-1}. \quad (4.20)$$

The conclusion follows from  $\tau_+ - \tau_- = 2r\sqrt{s_{1,m}s_{2,m}}$ ,  $\alpha_m = \sqrt{s_{1,m}/s_{2,m}}$  and  $|s_{1,m}| = 1$ .  $\square$

To go further, we are going to take into account the isomorphism property (2.15), which is equivalent to imposing

$$c_1 (1 + m^2)^{\frac{1}{2}} \leq \operatorname{Re}(t_m) \leq c_2 (1 + m^2)^{\frac{1}{2}}. \quad (4.21)$$

For simplicity, we use a slightly more restrictive assumption, namely that

$$t_m \sim \zeta \frac{|m|}{kR}, \quad |m| \text{ large, with } \operatorname{Re}(\zeta) > 0, \quad (4.22)$$

which can be shown (see Sect. 4.3) to be shared by any of the non local operators introduced in Section 3. Our main result is

**Theorem 4.2.** *Assume  $0 < r < 1$  and assumption (4.22) to hold, then the  $\tau_{r,m}$ 's defined in (4.13)–(4.12) via (4.5)–(4.6) satisfies  $\hat{\tau}_r := \sup_{m \in \mathbb{Z}} \tau_{r,m} < 1$  and we have for the  $n$ th power of the operator  $A_r$ ,*

$$\|A_r^n\| = \sup_m \sup_{|x|=1} |A_{r,m}^n x| \leq (\hat{\tau}_r + rn) \hat{\tau}_r^{n-1}. \quad (4.23)$$

*Proof.* Due to Lemma 4.1, it remains to show that  $\hat{\tau}_r$  is strictly smaller than 1. Using large order asymptotics for Bessel functions and their derivatives, one shows after tedious but straightforward calculations that

$$d_{1,m} \sim d_{2,m} \sim \frac{|m|}{kR}, \quad |m| \text{ large.} \quad (4.24)$$

Thus, using (4.5), (4.6) and assumption (4.22)

$$\sqrt{s_{1,m}s_{2,m}} \sim \sqrt{\left(\frac{\frac{|m|}{kR} - i\bar{t}_m}{\frac{|m|}{kR} + it_m}\right) \left(\frac{\frac{|m|}{kR} - it_m}{\frac{|m|}{kR} + i\bar{t}_m}\right)} \longrightarrow L(\zeta), \quad \text{when } |m| \rightarrow +\infty, \quad (4.25)$$

with

$$L(\zeta) = \sqrt{\frac{1 - |\zeta|^2 - 2i\operatorname{Re}(\zeta)}{1 - |\zeta|^2 + 2i\operatorname{Re}(\zeta)}}. \quad (4.26)$$

Obviously,  $|L(\zeta)| = 1$  and since  $\operatorname{Re}(\zeta) > 0$ , it comes that  $L(\zeta) \neq 1$ , i.e.  $L(\zeta) = e^{i\psi}$  with  $\psi \in [-\pi/2, \pi/2]$ ,  $\psi \neq 0$ . As a consequence of (4.25), (4.12) and (4.13),

$$\tau_{r,\infty} := \lim_{|m| \rightarrow +\infty} \tau_{r,m,+} = |(1-r) + rL(\zeta)| \quad (4.27)$$

and a simple calculation for  $L(\zeta) = e^{i\psi}$  leads to

$$\tau_{r,\infty}^2 = 1 - 4r(1-r) \sin^2 \frac{\psi}{2} < 1, \quad \text{since } \psi \neq 0 \quad \text{and} \quad r(1-r) > 0. \quad (4.28)$$

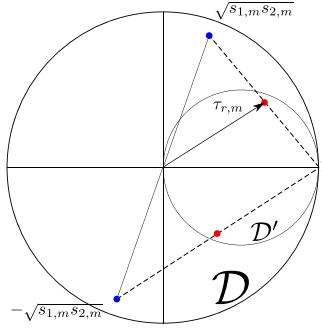


FIGURE 3. Effect of the relaxation on the eigenvalues of the unrelaxed problem (representation for  $r = \frac{1}{2}$ ). Blue dots represent the unrelaxed eigenvalues, in red are the relaxed ones.

To conclude, we note that for any  $\varepsilon > 0$ , there exists  $M(\varepsilon)$  such that

$$\tau_{r,m} < \tau_{r,\infty} + \varepsilon, \quad \forall |m| < M(\varepsilon). \quad (4.29)$$

On the other end, thanks to (103),

$$\forall M \in \mathbb{N}, \quad \hat{\tau}_r(M) := \max_{|m| < M} \tau_{r,m} < 1 \quad (4.30)$$

and we have

$$\hat{\tau}_r \leq \max \{ \tau_{r,\infty}, \hat{\tau}_r(M(\varepsilon)) \} < 1 \quad \text{for } \varepsilon \text{ small enough} \quad \left( \text{a.e. } \varepsilon = \frac{1 - \tau_{r,\infty}}{2} \right). \quad (4.31)$$

**Remark 4.3.** The number  $\hat{\tau}_r = \sup_{m \in \mathbb{Z}} \tau_{r,m}$  differs from  $\tau_r = \|A_r\|$ . It is obvious that  $\hat{\tau}_r \leq \tau_r$ . In our case, one can even check that  $\hat{\tau}_r < \tau_r$ , reason why the estimate (4.23) is asymptotically better than (4.9).  $\square$

**Remark 4.4** (On a lower bound of the convergence rate). From (4.28), since  $|\frac{\psi}{2}| < \frac{\pi}{4}$  and  $r \in ]0, 1[$ , it comes

$$\tau_{r,\infty} \geq \frac{1}{\sqrt{2}}. \quad (4.32)$$

This shows that for this particular problem, the convergence rate of the method cannot be smaller than  $\approx 0.707$ , and this limitation is due to the highest modes of the problem.

**Remark 4.5** (On the effect of the relaxation). As one can see from (4.12), the eigenvalues of  $A_{r,m}$  are a convex linear combination between 1 and the unrelaxed eigenvalues  $\pm\sqrt{s_{1,m}s_{2,m}}$ . We define in the complex plane the function  $f_r(z) = (1-r) + rz$ . Since  $f_r(z) - 1 = r(z-1)$ , the  $\mathbb{C}$ -mapping  $f_r$  is a homothety of factor  $r$ , centered at  $z = 1$ . Then, if  $\mathcal{D}$  denotes the open unit disk, the image of  $\mathcal{D}$  by  $f_r$  is another open disk  $\mathcal{D}'$  centered at  $f_r(0) = 1-r$  and of radius  $r$ . Note that  $\mathcal{D}' \subset \mathcal{D}$  (see Fig. 3), and the inclusion is almost strict, in the sense that the closure of  $\mathcal{D}'$  is also included in the open unit disk  $\mathcal{D}$  at the notable exception of the point  $z = 1$ .

## 4.2. On the necessity of the isomorphism assumption (2.15)

In Sections 2 (Thm. 2.1) and 4.1.2 (Thm. 4.2), we have shown that the assumption (2.15) (or equivalently the double inequality (4.21)) is a sufficient condition for achieving exponential convergence. We now show that this is more or less a necessary condition. It is the object of the following theorem.

**Theorem 4.6** (A case of non-exponential convergence). *Assume that*

$$(a) \quad \liminf_{m \rightarrow \infty} \frac{|t_m|}{m} = 0, \quad \text{or} \quad (b) \quad \limsup_{m \rightarrow \infty} \frac{|t_m|}{m} = +\infty, \quad (4.33)$$

*then, there cannot exist  $C > 0$  and  $\tau \in ]0, 1[$  such that*

$$\|A_r^n\| \leq C \tau^n. \quad (4.34)$$

*Proof.* We can assume that, up to the extraction of a subsequence, the  $\liminf$  or  $\limsup$  in (4.33) are true limits. From (4.5), we can rewrite

$$s_{1,m} s_{2,m} = \left( \frac{1 - i \bar{t}_m / d_{1,m}}{1 + i \bar{t}_m / d_{2,m}} \right) \left( \frac{1 - i t_m / d_{2,m}}{1 + i t_m / d_{1,m}} \right). \quad (4.35)$$

Then, as soon as  $|t_m|/m \rightarrow 0$  or  $|t_m|/m \rightarrow +\infty$ , using (4.24),

$$\lim_{m \rightarrow \infty} s_{1,m} s_{2,m} = 1, \quad (4.36)$$

which obviously implies that

$$\lim_{m \rightarrow \infty} \tau_{r,m,+} = \lim_{m \rightarrow \infty} (1 - r) + r \sqrt{s_{1,m} s_{2,m}} = 1. \quad (4.37)$$

Let  $x_{r,m,+} \in \mathbb{C}^2$  be the eigenvector ( $|x_{r,m,+}| = 1$ ) of  $A_{r,m}$  associated to the eigenvalue  $\tau_{r,m,+}$  and let  $g = x_{r,m,+} e^{im\theta} \in X$ . We have obviously

$$\|A_r^n g\| = |\tau_{r,m,+}|^n \|g\|. \quad (4.38)$$

If (4.34) were true, with  $\tau < 1$ , we would have

$$|\tau_{r,m,+}|^n < C \tau_n, \quad \text{i.e.} \quad |\tau_{r,m,+}| < C^{\frac{1}{n}} \tau. \quad (4.39)$$

By letting  $n$  go to  $+\infty$ , we would get  $|\tau_{r,m,+}| < \tau$  for all  $m$ , which contradicts (4.37).  $\square$

**Remark 4.7.** The fact that the contradiction in the proof is obtained by making  $m \rightarrow +\infty$  shows that the lack of exponential convergence is due to the most oscillatory modes on the interface.

**Corollary 1.** *As a consequence, exponential convergence cannot be achieved with the algorithm (2.10) and (2.11), if the impedance operator is searched as a Padé-like operator of the form*

$$T = P(-\Delta_\Sigma) Q(-\Delta_\Sigma)^{-1}, \quad (4.40)$$

*where  $P$  and  $Q$  are polynomials and  $\Delta_\Sigma$  is the Laplace-Beltrami operator.*

*Proof.* With the choice (4.40), we have

$$t_m = \frac{P(m^2)}{Q(m^2)}, \quad (4.41)$$

so that either  $t_m$  has a finite limit when  $m \rightarrow +\infty$ , leading to (4.33a) or  $t_m$  is equivalent to  $m^{2k}$  for some integer  $k \geq 1$  leading to (4.33b).  $\square$



### 4.3. Application to the non local operators of Section 3

We have seen the importance of condition (4.22), we will now see that the several solutions proposed in Section 3 satisfy this condition. The invariance of the problem by any rotation allows us to show that the functions  $e^{im\theta}$ ,  $m \in \mathbb{Z}$  diagonalize these operators; the explicit computation of the eigenvalues associated to the operators reduces to the evaluation of known integrals. For more details on these computations, see [15] Chapters 4 and 5, as well as Appendix A.2.

**Operators issued from Strategy 1.** The two operators  $T_R$  from strategy 1 ((3.2) and (3.13)), coincide on this geometry and it can be proven that the eigenvalues of the operator  $T = (1 + i\gamma)T_R$  are

$$t_m = (1 + i\gamma) \left( \alpha + \beta \frac{|m|}{kR} \right), \quad (4.42)$$

which means in particular that (4.22) holds with  $\zeta = (1 + i\gamma)\beta$ .

**Operators issued from Strategy 2.** For the operators  $\Lambda$  defined *via* (3.18) or (3.22), the eigenvalues of  $T = (1 + i\gamma)\Lambda^*\Lambda$  are  $t_m = (1 + i\gamma)|\lambda_m|^2$  with, for (3.18)

$$\lambda_m = \alpha + 2\beta \sqrt{\frac{2\pi}{kR}} \left( \frac{\Gamma(|m| + \frac{3}{4})}{\Gamma(|m| + \frac{1}{4})} - \frac{\Gamma(\frac{3}{4})}{\Gamma(\frac{1}{4})} \right), \quad (4.43)$$

and for (3.22)

$$\lambda_m = \alpha + \frac{\beta}{2} \sqrt{\frac{2\pi}{kR}} \frac{m^2 \Gamma(|m| - \frac{1}{4})}{\Gamma(|m| + \frac{5}{4})}, \quad (4.44)$$

where  $\Gamma$  is the usual gamma function  $\Gamma(z) = \int_0^{+\infty} t^{z-1} e^{-t} dt$ . Then using the asymptotics

$$\frac{\Gamma(x+a)}{\Gamma(x)} \sim x^a, \quad x \rightarrow \infty, \quad (4.45)$$

the property (4.22) holds with  $\zeta = 8\pi(1 + i\gamma)|\beta|^2$  for (4.43) and  $\zeta = (1 + i\gamma)\pi|\beta|^2/2$  for (4.44).

## 5. MODAL ANALYSIS WITH CIRCULAR SYMMETRY: QUANTITATIVE RESULTS

In this section we restrict ourselves to the operator  $T_R$  given by (3.2). Note that all these operators are modally very similar anyway. According to Formulas (2.42) and (2.43), our method depends on the relaxation parameter  $r$ , on the real parameter  $\gamma$  in  $T = (1 + i\gamma)T_R$ , cf (3.1), and on the two real coefficients  $\alpha > 0$  and  $\beta > 0$  in the definition of the operator  $T_R$ . One of the goals of this section is to show that, by playing on these parameters, it is possible to improve the convergence of the method. For simplicity, we shall restrict ourselves to  $\gamma = 0$ , in other words the operator  $T_I$  is identically zero. With this choice, the eigenvalues of  $T$  are purely real and given by

$$t_m = t_m(\alpha, \beta) := \alpha + \beta \frac{|m|}{kR}. \quad (5.1)$$

But we shall show that, even in this case, it is useful to look for optimal parameters  $\alpha$ ,  $\beta$  and  $r$  (Sect. 5.1). In Section 5.3, we shall analyze the influence of the frequency on the convergence rate, and finally in Section 5.4 the influence of the truncation process, consisting in replacing  $T_R$  (given by (3.2)) by  $T_{R,L}$ , given (3.4).

### 5.1. Optimization of the convergence rate for non local operators

According to Section 4, we wish to minimize the function  $\tau_r(r, \alpha, \beta)$  given by

$$\tau_r(r, \alpha, \beta) := \sup_{m \in \mathbb{Z}} |\tau_{r,m,+}(r, \alpha, \beta)|, \quad \tau_{r,m,\pm}(r, \alpha, \beta) = (1-r) \pm r \sqrt{\frac{d_{1,m} - i \bar{t}_m(\alpha, \beta)}{d_{1,m} + i t_m(\alpha, \beta)} \cdot \frac{d_{2,m} - i t_m(\alpha, \beta)}{d_{2,m} + i \bar{t}_m(\alpha, \beta)}}, \quad (5.2)$$

where  $d_{1,m}$  and  $d_{2,m}$  are given by (4.6). It is worth mentioning that

- Since  $\alpha = t_0(\alpha, \beta)$ ,  $\alpha$  essentially governs the convergence of the projection of the boundary error  $\varepsilon_n$  (see (2.34) and (2.35)) on the lower order modes (small values of  $m/kR$ ). In particular, for large values of  $kR$ , one computes that  $\lim_{kR \rightarrow \infty} d_{1,0} = \cot k(R - R_1)$  and  $\lim_{kR \rightarrow \infty} d_{2,0} = i$  so that

$$\lim_{kR \rightarrow \infty} \tau_{r,0,+}(r, \alpha, \beta) = 1 - r + r \sqrt{\frac{1 - \alpha}{1 + \alpha} \cdot \frac{\cot k(R - R_1) - i\alpha}{\cot k(R - R_1) + i\alpha}}, \quad (5.3)$$

which is easily shown to be minimum (and equal to 0!) for

$$\alpha = 1, \quad r = 1. \quad (5.4)$$

With no surprise, one recovers the Després transmission conditions without relaxation.

- On the other hand,  $\beta$  governs the behaviour of  $t_m(\alpha, \beta)$  for large values of  $m/kR$  so that  $\beta$  essentially governs the convergence of the projection of the boundary error  $\varepsilon_n$  on the higher order modes. In particular, for  $m \rightarrow \infty$ , we know that (see Sect. 4)

$$\tau_{r,\infty}(r, \alpha, \beta) := \lim_{m \rightarrow \infty} \tau_{r,m,+}(r, \alpha, \beta) = F(r, \psi(\beta)), \quad F(r, \psi) = |(1-r) + r e^{i\psi}|, \quad (5.5)$$

where  $\psi(\beta)$  is defined by

$$e^{i\psi(\beta)} = \left( \frac{1 - \beta^2 - 2i\beta}{1 - \beta^2 + 2i\beta} \right)^{\frac{1}{2}}. \quad (5.6)$$

When  $\beta$  describes  $\mathbb{R}^+$ , one shows that  $\psi(\beta)$  describes  $] -\frac{\pi}{2}, \frac{\pi}{2}]$ . On the other hand, by simple geometrical reasoning, one shows that

$$\min_{(r, \psi) \in [0, 1] \times ] -\frac{\pi}{2}, \frac{\pi}{2}]} F(r, \psi) = F\left(\frac{1}{2}, \frac{\pi}{2}\right) = \frac{\sqrt{2}}{2}. \quad (5.7)$$

Since  $\psi = \frac{\pi}{2}$  corresponds to  $\beta = 1$  we deduce that  $\tau_{r,\infty}(r, \alpha, \beta)$  is minimum for

$$r = \frac{1}{2}, \quad \beta = 1. \quad (5.8)$$

Let us now describe our numerical procedure for minimizing  $\tau_r(r, \alpha, \beta)$ . In what follows, and for the simplicity of writing, we omit the explicit dependency  $(r, \alpha, \beta)$  of  $\tau_r$  and  $\tau_{r,m,\pm}$ .

First, note that in practice, it is not easy to numerically evaluate the objective function  $\tau_r$  since it involves suprema of an infinity of real numbers. However, the eigenvalue  $\tau_{r,m,+}$  has a finite limit  $\tau_{r,\infty}$  when  $m$  tends to infinity (see (4.27)), so that the supremum is either reached for a finite value of  $m$  or equal to  $\tau_{r,\infty}$ . This means that there exists an integer  $M$  such that

$$\tau_r = \sup_{m \in \mathbb{Z}} |\tau_{r,m,+}| = \max \left( \sup_{|m| < M kR} |\tau_{r,m,+}|, |\tau_{r,\infty}| \right), \quad (5.9)$$

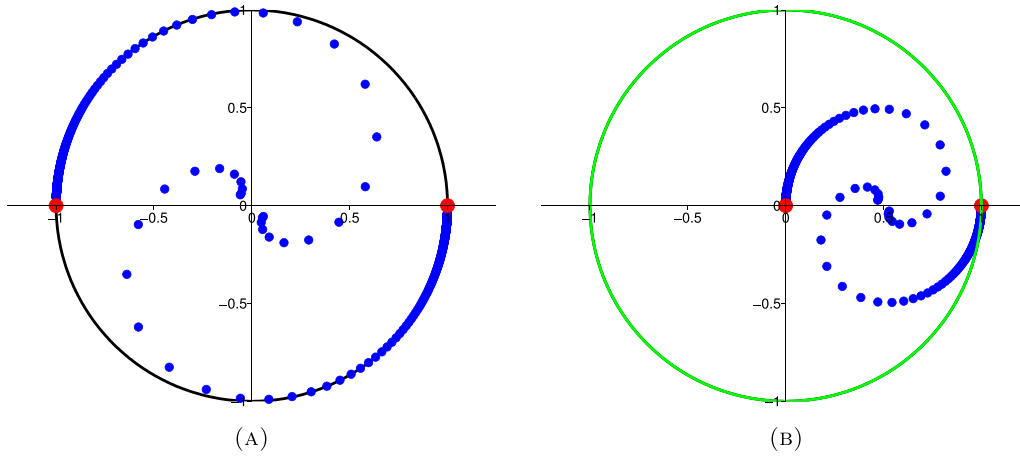


FIGURE 4. Representation in the complex plane of the unrelaxed (left) and relaxed (right) eigenvalues of  $A_{r,m}$  when Després transmission conditions are used. We used  $r = \frac{1}{2}$  as a relaxation parameter (right). The red dots denote the limits of the eigenvalues for  $m \rightarrow \infty$ . (A)  $t_m = 1$  without relaxation (B)  $t_m = 1$  with relaxation  $r = \frac{1}{2}$ .

which reduces to the supremum over finitely many real numbers. Of course we do not know  $M$  *a priori*, in practise we used  $M = 10$  and this appeared to be widely sufficient.

Due to the complexity of the function  $\tau_r(r, \alpha, \beta)$ , it is not possible to solve this constrained minimization problem analytically, even for very simplified cases. To approximate the solution, we have developed a `Matlab` code, using the `fminimax` function of the *Optimization* toolbox. This function allows the minimization under constraints of the maximum of the absolute value of a function. It uses *Sequential Quadratic Programming* iterative approach. For more information on this issue, we refer the reader to [13] and [19] for instance. For the initial guess, it is rather natural to use as a mix between (5.4) and (5.8)

$$\alpha = 1, \quad \beta = 1, \quad r = \frac{1}{2}. \quad (5.10)$$

## 5.2. An illustrative example

For this example, we took  $R_1 = 1$ ,  $R_2 = 2$  and  $R = 1.5$ . When the wavenumber is  $k = 2\pi$ , the length of the interface  $\Sigma$  is about 10 times larger than the wavelength.

As a reference, let us illustrate the modal convergence of the algorithm for the Després operator, corresponding to  $\alpha = 1$  and  $\beta = 0$ . We depict in Figure 4 the eigenvalues of the operator  $A_r$  in the complex plane for  $r = 1$  (no relaxation) and  $r = 0.6$ . The eigenvalues correspond to the blue dots. These plots illustrate the different properties described in the previous sections. One observes that, as expected, the eigenvalues are inside the unit disk, which insures convergence, and accumulate at two points  $1 - 2r$  and  $1$  (the red dots), which prevents exponential convergence. Figure 4b is obtained from Figure 4a by applying the mapping  $z \rightarrow 1 + r(z - 1)$ , an homothety of center  $z = 1$  and ratio  $r$ .

In Figure 5a and 5b, we show the eigenvalues of  $A_r$  for  $\alpha = \beta = 1$  and two values of  $r$ :  $r = 1$  which corresponds to the unrelaxed case, and  $r = \frac{1}{2}$ , which corresponds to the initial guess of the optimization process of Section 5.1. With  $r = 1$ , the eigenvalues do accumulate at two opposite points of the unit circle but not at  $\pm 1$  (Fig. 5a), so that the homothety  $z \rightarrow 1 + r(z - 1)$  brings them back strictly inside the unit disk. For  $r = \frac{1}{2}$ , the exponential rate of convergence corresponds to the radius ( $\tau_r = 0.94$ ) of the green circle (Fig. 5b).

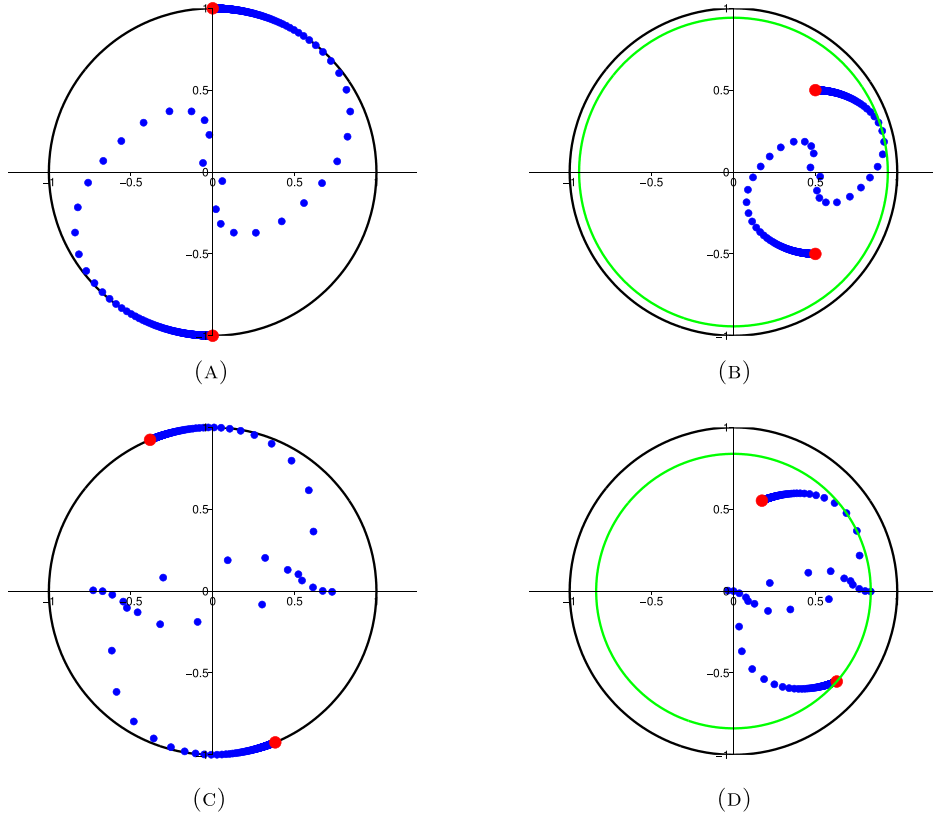


FIGURE 5. Representation in the complex plane of the unrelaxed (left) and relaxed (right) eigenvalues of  $A_{r,m}$  for the non local operator:  $t_m = \alpha + \beta \frac{m}{kR}$ . For the two plots on the top, we used  $\alpha = \beta = 1$ , and for the two plots on the bottom we used  $\alpha^* = 0.31$ , and  $\beta^* = 0.21$ . Also,  $r^* = 0.6$ . The red dots denote the limits of the eigenvalues for  $m \rightarrow \infty$ . (A)  $t_m = 1 + \frac{m}{kR}$  without relaxation (B)  $t_m = 1 + \frac{m}{kR}$  with relaxation ( $r = \frac{1}{2}$ ) (C)  $t_m = \alpha^* + \beta^* \frac{m}{kR}$  without relaxation (D)  $t_m = \alpha^* + \beta^* \frac{m}{kR}$  with relaxation ( $r = r^*$ ).

The optimization process described in Section 5.1, leads to the following values

$$\alpha^* = 0.31, \quad \beta^* = 0.21, \quad r^* = 0.60. \quad (5.11)$$

In Figure 5c and 5d, we show the eigenvalues of  $A_r$  for  $\alpha = \alpha^*$  and  $\beta = \beta^*$  and two values of  $r$ :  $r = 1$  which corresponds to the unrelaxed case, and  $r = r^*$ , which corresponds to the optimized parameter. For  $r = r^*$ , the optimal rate of convergence, again the radius of the green circle in Figure 5d, is  $\tau_r^* = 0.83$ .

For a better understanding of the optimization process, we represent the modulus of the eigenvalues  $\tau_{r,m,+}$  as a function of  $m$  in Figure 6 for the initial guess and the optimized operator. As expected, we observe for the initial guess that the limit for large  $m$  for the initial guess is  $\sqrt{2}/2$  and that the convergence is penalized by the values of  $m$  of the order of  $kR$  (often referred to as grazing modes), where the curve presents a peak. For the optimized coefficients, the shape of the curve is qualitatively the same and a nice observation, for which we have no explanation at the moment, is that the optimization process provides equal values of the rate of convergence for  $m = 0$ , for  $m \rightarrow +\infty$  and for  $m \approx kR$ .

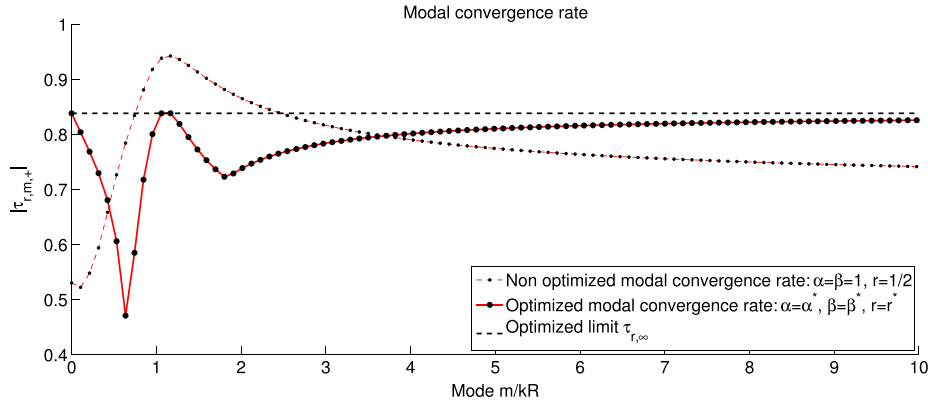


FIGURE 6. Comparison of the modal convergence rate with or without optimization of the non local operator for the wavenumber  $k = 2\pi$ .

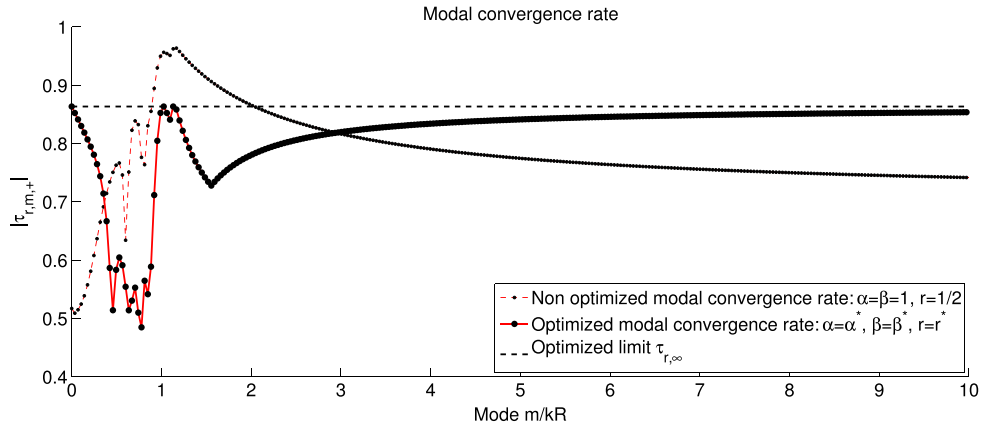


FIGURE 7. Comparison of the modal convergence rate with or without optimization of the non local operator for the wavenumber  $k = 6\pi$ . The dashed line represents the supremum over all modes.

### 5.3. Influence of the frequency on the convergence rate

We now consider the higher wavenumber  $k = 6\pi$ , *i.e.* when the interface is about 30 wavelength long. In this case, the optimization process leads to the optimized coefficients

$$\alpha^* = 0.24, \quad \beta^* = 0.19, \quad r^* = 0.62, \quad (5.12)$$

and the corresponding optimized convergence rate is  $\tau_r^* = 0.87$ . In Figure 7, we represent the modal convergence curve for the initial guess values (5.10) and the optimized coefficients (5.12). The shape of the modal convergence curve which is a little bit more chaotic and oscillates more than for the case  $k = 2\pi$ , presents the same qualitative behaviour as before, in particular they present a peak, and again the optimization process tends to provide the same convergence rate for low order modes, high order modes and grazing modes.

Since  $\tau_r^*(6\pi) = 0.87$  is slightly larger than  $\tau_r^*(2\pi) = 0.83$ , one could expect that the optimal convergence rate deteriorates when the frequency increases. In order to verify and quantify this fact, we have computed the optimized rate  $\tau_r^*(k)$  when the dimensionless variable  $kR$  varies from 1 to 1000. The corresponding curve is

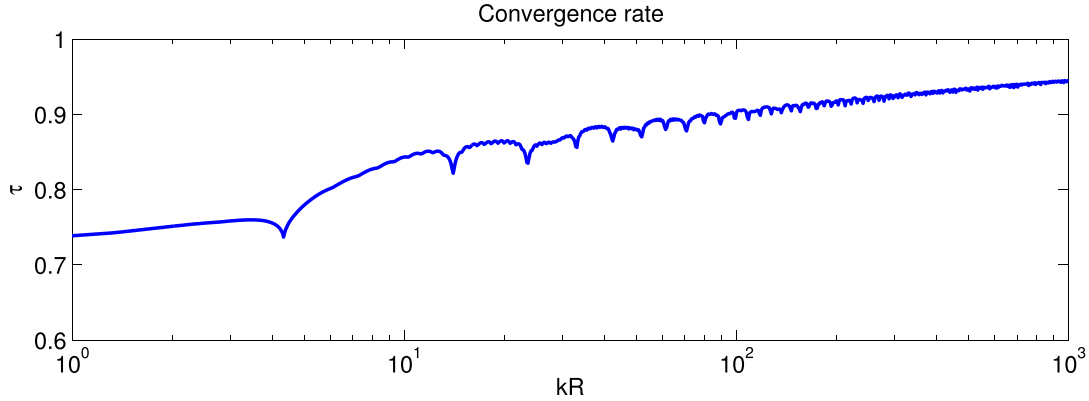


FIGURE 8. Evolution of the optimized convergence rate *versus* the wavenumber.  $kR$  varies from 1 to 1000.

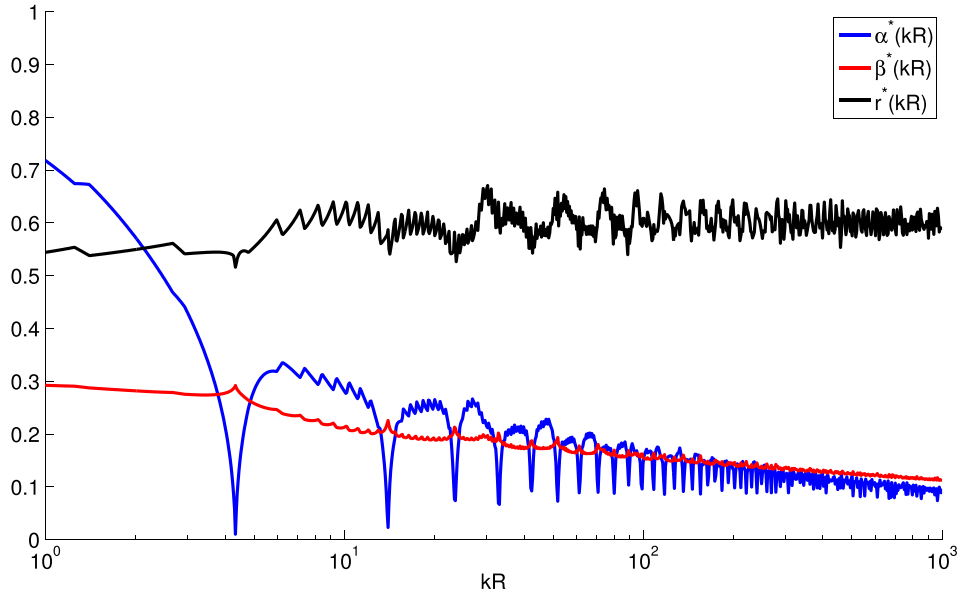


FIGURE 9. Evolution of the optimized coefficients  $\alpha^*(k)$ ,  $\beta^*(k)$  and  $r^*(k)$  *versus* the wavenumber.  $kR$  varies from 1 to 1000.

depicted in Figure 8. This rate does deteriorate with the wavenumber but its increase is moderate. It seems that it tends to 1 when  $k$  tends to infinity but very slowly and a linearisation suggest that the convergence rate behaves as

$$\tau_r(kR) \approx 1 - 0.32(kR)^{-0.25}. \quad (5.13)$$

We have also represented in Figure 9 the variations of the optimized coefficients  $\alpha^*(k)$ ,  $\beta^*(k)$  and  $r^*(k)$ . We observe that the value of  $r^*(k)$  is relatively stable around 0.6, while the value  $\beta^*(k)$  has a rather regular and decreasing behaviour. However it is difficult at this stage to make a conjecture on its behaviour when  $k$  goes to infinity. Similar observations can be done for  $\alpha^*(k)$  at the exception that this coefficient presents many peaks corresponding to local minima that seems to correspond to the resonances of the initial diffraction

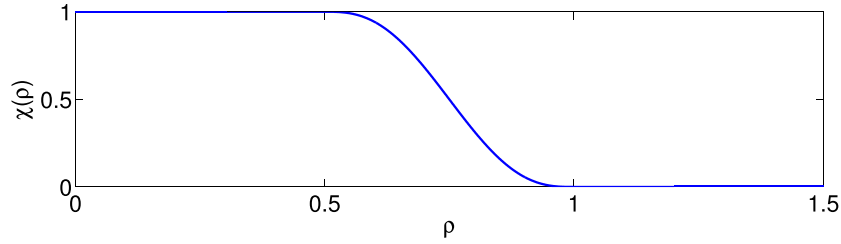


FIGURE 10. Truncation function, given here by  $\chi(\rho) = P(2\rho - \frac{3}{2})$ ,  $\frac{1}{2} \leq \rho \leq 1$  with  $P(x) = \frac{1}{2} + x(-\frac{15}{8} + x^2(5 - 6x^2))$ .

problem. In particular, for large  $k$ , they are located at the poles of  $\cot k(R - R_1)$  (see (5.3)). This means that the optimization algorithm adapts itself to the physics of the problem, and the coefficient  $\alpha$  is more sensitive to the resonances than the coefficient  $\beta$ .

#### 5.4. Influence of the truncation on the convergence rate

Finally, we evaluate the influence of the truncation process described in Section 3 for obtaining the operator  $T_{R,L}$  given by, for instance, (3.4) on the convergence rate of the algorithm. Two more parameters enter in the game: the truncation function  $\chi(\rho)$  and the truncation length  $L$ . Here we shall fix the function  $\chi(\rho)$  by imposing that it satisfies (3.3), is globally of class  $C^2$  and polynomial of degree 5 between  $\frac{1}{2}$  and 1 (see Fig. 10 for the graph of the function). Our goal is to measure the influence of the truncation length  $L$  on the optimized convergence rate  $\tau_r^*(k, L)$ . It is easily seen that since, the truncation process is radial, the truncated operator  $T_{R,L}$  is still diagonalizable in the Fourier basis and thus enters the framework of Section 4. Its eigenvalues  $t_{m,L}$  can be expressed in terms of integrals involving the function  $\chi$ . More precisely, we have

$$t_{m,L} - t_m = \frac{\beta}{kR} \int_{-\pi}^{\pi} \hat{\chi}\left(\frac{R}{L}(2 - 2\cos\theta)^{\frac{1}{2}}\right) \frac{1 - \cos m\theta}{2 - 2\cos\theta} d\theta, \quad \text{where } \hat{\chi}(\rho) = 1 - \chi(\rho). \quad (5.14)$$

The reader will observe that the right-hand side is an integral of a smooth function since the integrand is identically zero in a neighborhood of the origin. It is also clear that computing this integral reduces to computing Fourier coefficient of a smooth function in  $[-\pi, \pi]$ , which can be done efficiently with a Fast Fourier Transform algorithm. Moreover, this formula also shows that the behaviour of the difference  $t_{m,L} - t_m$  for large  $m$  is related to the regularity of  $\chi$ .

This allowed us to compute the function  $\tau_r^*(L, k)$ . In Figure 11, we have represented the curves  $L/\lambda \rightarrow \tau_r^*(L, k)$  where  $\lambda = 2\pi/k$  is the wavelength, for two values of  $k$ :  $k = 2\pi$  and  $k = 6\pi$ .

On each curve, we observe that the optimized rate does not depend on  $L$  as long as  $L/\lambda$  is sufficiently large and exceeds  $\frac{1}{4}$ . Of course, when  $L$  goes to zero, this convergence rate tends to 1, which is expected since the operator is no longer non local. This observation seems to be relatively independent from the frequency. From the practical point of view, this means that one could get the effect of our non local operator (exponential convergence) at the cost of a local operator. Indeed, with standard finite element methods, one is used to fix the number of grid points per wavelength. Then choosing a truncation length proportional to the wavelength, the number of grid points in the support of the  $y \rightarrow \chi(|x - y|/L)$  is approximately constant so that the sparsity of the matrix corresponding to the non local operator would be in practice independent on the wavelength.

## 6. CONCLUSION AND PERSPECTIVES

In this paper, we have proposed a novel family of transmission conditions allowing for the construction of exponentially fast converging iterative domain decomposition methods for the Helmholtz equation in heterogeneous media. Even though we restrict ourselves to two subdomains in this paper, the results can be extended to

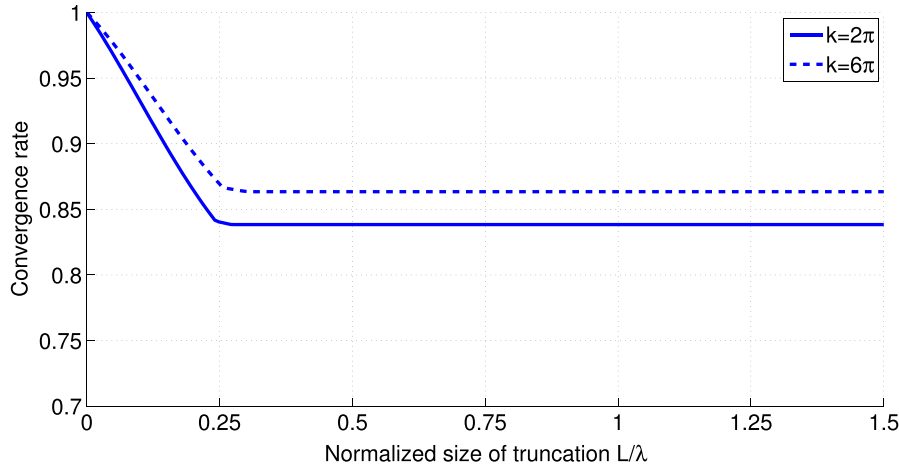


FIGURE 11. Evolution of the convergence rate *versus* the length of the truncation  $L$  for the wavenumber  $k = 2\pi$ .  $L/\lambda$  varies from 0 to 1.5.

an arbitrary number of subdomains, following the argument in [5], at the condition that there are no crossing points between interfaces (this corresponds to the situation in Fig. 1). The convergence of the method has been fully analyzed. Let us point out that, in most papers on DDM for time-harmonic wave propagation problems, the theoretical study of the problem is often ignored (no proof of convergence, or even no proof of wellposedness of the local subproblems in the general case). We believe that having this theory is one of the strength of our approach. We have constructed several examples of transmission conditions involving integral operators with appropriately designed singular kernels. Some strategies allow for the use of a truncation process that dramatically decreases the computational cost due to the non local operator (has shown in Sect. 5.4).

As already mentioned, we have chosen to concentrate ourselves to the theoretical analysis of our method at the continuous level. The presentation of the spatial discretization of our method (which is already extensively developed in [15]) and the corresponding numerical analysis will be the object of a forthcoming paper. To be honest, at this stage of advancement, even though our algorithm is more efficient at the continuous level, the method we propose is in practical situations (meaning after space discretization) still usually not competitive in terms of computational cost with the most sophisticated operators as in [3] at least if we restrict ourselves to the operators proposed in Section 3.

Fortunately, this is certainly not the end of the story and there is still a lot of room for improvement of this class of methods. For instance, by combining cleverly several integral operators, one could expect the same gain that has been achieved with Padé-like operators by passing from (1.16) to (1.17). Another perspective is to try to combine local operators with non local ones. Indeed, if one look at the model problem of Section 4, our modal convergence analysis shows that the use of non local operator is necessary and efficient to cope with higher modes, while it is well known that local operators are well adapted for dealing with low order modes. The difficulty is then to try to fit in the general theoretical framework of Section 2. Finally, a challenging perspective is the extension of the ideas developed in this paper to 3D Maxwell's equation.

## APPENDIX A. PROOF OF LEMMA 3.3

**Lemma A.1.** Assume that  $\Sigma$  is smooth enough,  $\alpha > 0$  and  $\beta \in \mathbb{C} \setminus \mathbb{R}^-$ , then  $\Lambda^{(0)}$  defined by  $\Lambda^{(0)} = \alpha I + \beta L^{(0)}$  where

$$\langle L^{(0)} \varphi, \psi \rangle = \int_{\Sigma} \int_{\Sigma} \frac{(\varphi(x) - \varphi(y))(\overline{\psi(x)} - \overline{\psi(y)})}{|x - y|^{\frac{3}{2}}} d\sigma(x) d\sigma(y). \quad (\text{A.1})$$



is an isomorphism from  $H^{\frac{1}{2}}(\Sigma)$  into  $L^2(\Sigma)$ .

For simplicity, but without any loss of generality, we shall restrict ourselves to the case where  $\Sigma$  is rectifiable curve of length  $2\pi$ , parametrized by its curvilinear abscissa  $t \in [0, 2\pi]$ , and has  $C^{1,\delta}$  regularity ( $\delta > 0$ ), *i.e.*

$$\Sigma = \left\{ x(t) \in C_{\#}^{1,\delta}(0, 2\pi) / |x'(t)|^2 = 1 \right\}, \quad (\text{A.2})$$

where we have defined  $C_{\#}^{1,\delta}(0, 2\pi) = C_{\#}^{1,\delta}(0, 2\pi)^2$  with

$$C_{\#}^{1,\delta}(0, 2\pi) = \left\{ f \in C^1(0, 2\pi) / f(0) = f(2\pi), \quad \sup_{s \neq t} \frac{|f'(t) - f'(s)|}{d(t, s)^{\delta}} < +\infty \right\} \quad (\text{A.3})$$

Here  $d(s, t)$  is the “geodesic distance”, defined as

$$d(s, t) = \min(|s - t|, 2\pi - |s - t|) \quad (\text{A.4})$$

and we equip the space  $C_{\#}^{1,\delta}$  with the norm

$$\|x\|_{C_{\#}^{1,\delta}} = \sup_{t \in [0, 2\pi]} (|x(t)| + |x'(t)|) + \sup_{s \neq t} \frac{|x'(t) - x'(s)|}{d(t, s)^{\delta}}. \quad (\text{A.5})$$

Due to the regularity, it is clear that there exist  $0 < C_1 < C_2$  such that

$$\forall (s, t) \in [0, 2\pi]^2, \quad C_1 |x(t) - x(s)| \leq d(s, t) \leq C_2 |x(t) - x(s)|. \quad (\text{A.6})$$

With this parametrization,  $L^2(\Sigma)$  is thus identified to  $L^2(0, 2\pi)$ , *i.e.* for any function  $\varphi \in L^2(\Sigma)$  we associate a function  $\tilde{\varphi} \in L^2(0, 2\pi)$  such that  $\tilde{\varphi}(t) = \varphi(x(t))$ , and by definition of the  $L^2(\Sigma)$  norm,

$$\|\varphi\|_{L^2(\Sigma)} = \|\varphi\|_{L^2(0, 2\pi)}. \quad (\text{A.7})$$

and for these reasons, we shall use  $\varphi$  and  $\tilde{\varphi}$  independently. Similarly, the operator  $L^{(0)}$  is identified to the operator  $\mathcal{L}^{(0)}$  associated to the bilinear form

$$\left\langle \mathcal{L}^{(0)} \varphi, \psi \right\rangle = \int_0^{2\pi} \int_0^{2\pi} \frac{(\tilde{\varphi}(s) - \tilde{\varphi}(t))(\overline{\tilde{\psi}(s) - \tilde{\psi}(t)})}{|x(s) - x(t)|^{\frac{3}{2}}} \, ds \, dt. \quad (\text{A.8})$$

We begin with a circle of radius 1 which corresponds to

$$\Sigma = \Sigma_r := \{x_r(t) = (\cos t, \sin t), \quad \forall t \in [0, 2\pi]\}. \quad (\text{A.9})$$

**Lemma A.2.** *When  $\Sigma$  is the circle (A.9), the Lemma A.1 holds true.*

*Proof.* For any  $\alpha \in [0, 2\pi]$ , let  $\mathcal{R}_{\alpha}$  be the rotation of angle  $\alpha$  in  $\mathbb{R}^2$ . Let us set

$$\forall \varphi \in L^2(\Sigma), \quad (\mathbf{R}_{\alpha} \varphi)(x) = \varphi(\mathcal{R}_{\alpha} x) \in L^2(\Sigma). \quad (\text{A.10})$$

The key point is that, since the kernel in (A.10) depend on the distance  $|x - y|$ , the operator  $L_r^{(0)}$  and  $\mathbf{R}_{\alpha}$  commute

$$\left( L_r^{(0)} \mathbf{R}_{\alpha} \right) \varphi = \left( \mathbf{R}_{\alpha} L_r^{(0)} \right) \varphi. \quad (\text{A.11})$$

As a consequence, the operator  $\mathcal{L}_r^{(0)}$ , to which  $L_r^{(0)}$  is identified *via* (A.8), is diagonalized in the orthonormal basis  $e_m(\theta) = e^{im\theta}$ ,  $m \in \mathbb{Z}$ : one easily computes that

$$\mathcal{L}_r^{(0)} e_m = \lambda_m e_m, \quad \lambda_m = \int_{-\pi}^{\pi} \frac{1 - \cos mt}{(2 - 2 \cos t)^{\frac{3}{2}}} dt. \quad (\text{A.12})$$

The eigenvalues  $\lambda_m$  are then easily shown to satisfy

$$\lambda_0 = 0, \quad \lambda_m = \lambda_{-m} > 0 \quad \text{for } m \neq 0. \quad (\text{A.13})$$

Moreover, we have the asymptotic for large  $n$

$$\lambda_m \sim 2\sqrt{2\pi} |m|^{\frac{1}{2}} \quad (m \rightarrow \pm\infty). \quad (\text{A.14})$$

The conclusion of the lemma easily follows from the well-known characterisation of the Sobolev norm on the circle

$$H^s(\Sigma) = \left\{ u = \sum_{m \in \mathbb{Z}} u_m e_m \text{ such that } \sum_{m \in \mathbb{Z}} (1 + m^2)^s |u_m|^2 < +\infty \right\}. \quad (\text{A.15})$$

□

The proof for a general curve will rely on a compact perturbation technique and will use the follow technical lemma that exploits the regularity of the curve  $\Sigma$ .

**Lemma A.3.** *There exists a positive constant  $C_\delta$  such that*

$$\left| |x(t) - x(s)|^{-\frac{3}{2}} - |x_r(t) - x_r(s)|^{-\frac{3}{2}} \right| \leq C_\delta |x_r(t) - x_r(s)|^{-\frac{3}{2} + \delta}. \quad (\text{A.16})$$

*Proof.* Without loss of generality, we can restrict ourselves to  $(s, t) \in [-\frac{\pi}{2}, \frac{\pi}{2}]$  and extend the result by periodicity. In that case,  $d(s, t) = |t - s|$ . First, we write

$$\left| |x(t) - x(s)|^{-\frac{3}{2}} - |t - s|^{-\frac{3}{2}} \right| = \frac{\left| |x(t) - x(s)|^{\frac{3}{2}} - |t - s|^{\frac{3}{2}} \right|}{|x(t) - x(s)|^{\frac{3}{2}} |t - s|^{\frac{3}{2}}}. \quad (\text{A.17})$$

Using the property (A.6), we have, for some  $C > 0$

$$\left| |x(t) - x(s)|^{-\frac{3}{2}} - |t - s|^{-\frac{3}{2}} \right| \leq C |t - s|^{-3} \left| |x(t) - x(s)|^{\frac{3}{2}} - |t - s|^{\frac{3}{2}} \right|. \quad (\text{A.18})$$

Let us introduce the quantity (it will appear later)

$$D(s, t) = \int_s^t (x'(\tau) - x'(s)) d\tau. \quad (\text{A.19})$$

Using the  $C^{1,r}$  regularity of  $\Sigma$ , it comes (in the following,  $C_\delta$  denotes a positive constant whose value may vary from one line to the other, but only depends on  $\delta$ )

$$|D(s, t)| \leq C_\delta \left| \int_s^t (\tau - s)^\delta d\tau \right| \leq \frac{C_\delta}{\delta + 1} |t - s|^{1+\delta}. \quad (\text{A.20})$$

Moreover, we note that we can write

$$x(t) - x(s) = x'(s)(t - s) + D(s, t), \quad (\text{A.21})$$

so that

$$\begin{aligned} |x(t) - x(s)|^2 &= (t-s)^2 + |D(s,t)|^2 + 2(t-s)x'(s) \cdot D(s,t) \\ &= (t-s)^2 [1 + a(s,t)] \end{aligned} \quad (\text{A.22})$$

where  $a(s,t) = \frac{|D(s,t)|^2}{(t-s)^2} + 2 \frac{x'(s) \cdot D(s,t)}{(t-s)}$ . Therefore, denoting  $F(a) = (1+a)^{\frac{3}{4}} - 1$ ,

$$|x(t) - x(s)|^{\frac{3}{2}} - |t-s|^{\frac{3}{2}} = F(a(s,t)) |t-s|^{\frac{3}{2}}. \quad (\text{A.23})$$

Finally, we note that

- there exists  $C_F > 0$  such that for all  $a$ ,  $|F(a)| \leq C_F |a|$ ,
- using (A.20),  $|a(s,t)| \leq C_\delta |t-s|^\delta$ .

Thus, we deduce from (A.23)

$$|x(t) - x(s)|^{\frac{3}{2}} - |t-s|^{\frac{3}{2}} = C_\delta |t-s|^{\frac{3}{2}+\delta}. \quad (\text{A.24})$$

and finally deduce from (A.18)

$$| |x(t) - x(s)|^{-\frac{3}{2}} - |t-s|^{-\frac{3}{2}} | \leq C_\delta |t-s|^{-\frac{3}{2}+\delta}. \quad (\text{A.25})$$

In the same way, we have for  $x_r$

$$| |x_r(t) - x_r(s)|^{-\frac{3}{2}} - |t-s|^{-\frac{3}{2}} | \leq C_\delta |t-s|^{-\frac{3}{2}+\delta}. \quad (\text{A.26})$$

Finally, we get (A.16) from (A.25), (A.26), the triangular inequality and (A.6) for  $x_r$ .  $\square$

**Lemma A.4.** *As an operator from  $H^{\frac{1}{2}}(\Sigma)$  into  $L^2(\Sigma)$ , the operator  $\mathcal{L}^{(0)} - \mathcal{L}_r^{(0)}$  is compact.*

*Proof.* Let  $K = \mathcal{L}^{(0)} - \mathcal{L}_r^{(0)}$ . We are going to prove that

$$\forall \varphi \in H^{\frac{1}{2}}(\Sigma), \quad \|K\varphi\|_{L^2(\Sigma)} \leq C_\delta \|\varphi\|_{H^{\frac{1-\delta}{2}}(\Sigma)}. \quad (\text{A.27})$$

This proves that  $K$  extends continuously as an operator in  $\mathcal{L}(H^{\frac{1-\delta}{2}}(\Sigma), L^2(\Sigma))$ . The lemma then follows from the compactness of the embedding

$$H^{\frac{1}{2}}(\Sigma) \hookrightarrow H^{\frac{1-\delta}{2}}(\Sigma). \quad (\text{A.28})$$

To prove (A.27), we write (for simplicity, we omit the bounds of the integrals)

$$(K\varphi, \psi)_{L^2(\Sigma)} = \iint \mathcal{K}(s,t)(\varphi(s) - \varphi(t))(\bar{\psi}(s) - \bar{\psi}(t)) ds dt, \quad (\text{A.29})$$

where we have set

$$\mathcal{K}(s,t) = |x(s) - x(t)|^{-\frac{3}{2}} - |x_r(s) - x_r(t)|^{-\frac{3}{2}}. \quad (\text{A.30})$$

Using Lemma A.3, we deduce that (again in the following,  $C_\delta$  denotes a positive constant whose value may vary from one line to the other, but only depends on  $\delta$ )

$$| (K\varphi, \psi)_{L^2(\Sigma)} | \leq C_\delta \iint \frac{|\varphi(s) - \varphi(t)| |\psi(s) - \psi(t)|}{d(s,t)^{\frac{3}{2}-\delta}} ds dt. \quad (\text{A.31})$$

Writing  $\frac{3}{2} - \delta = \frac{2-\delta}{2} + \frac{1-\delta}{2}$  and using Cauchy-Schwarz inequality

$$| (K\varphi, \psi)_{L^2(\Sigma)} |^2 \leq C_\delta^2 \iint \frac{|\varphi(s) - \varphi(t)|^2}{d(s,t)^{2-\delta}} ds dt \cdot \iint \frac{|\psi(s) - \psi(t)|^2}{d(s,t)^{1-\delta}} ds dt. \quad (\text{A.32})$$

Using the parametrization (A.2) and the property (A.6), we recover that

$$\left| \iint \frac{|\varphi(s) - \varphi(t)|^2}{d(s, t)^{2-\delta}} ds dt \leq C_\delta^2 \int_\Sigma \int_\Sigma \frac{|\varphi(x) - \varphi(y)|^2}{|x - y|^{2-\delta}} d\sigma(x) d\sigma(y) \right. \\ \left. \leq C_\delta^2 \|\varphi\|_{H^{\frac{1-\delta}{2}}(\Sigma)}^2 \right. . \quad (\text{A.33})$$

On the other hand, since  $\delta > 0$ , by Lebegue's theorem:

$$x \rightarrow M_\delta(x) := \int_\Sigma \frac{dy}{|x - y|^{1-\delta}} \in C^0(\Sigma). \quad (\text{A.34})$$

Therefore, using property (A.6), and  $(a - b)^2 \leq 2a^2 + 2b^2$

$$\left| \iint \frac{|\psi(s) - \psi(t)|^2}{d(s, t)^{1-\delta}} ds dt \leq C_\delta^2 \int_\Sigma \int_\Sigma \frac{|\psi(x) - \psi(y)|^2}{|x - y|^{1-\delta}} d\sigma(x) d\sigma(y) \right. \\ \left. \leq 4 C_\delta^2 \int_\Sigma M_\delta(x) |\psi(x)|^2 d\sigma(x) \right. \\ \left. \leq 4 C_\delta^2 \|M_\delta\|_{L^\infty(\Sigma)} \|\psi\|_{L^2(\Sigma)}^2 \right. . \quad (\text{A.35})$$

Finally (A.27) follows from (A.32), (A.33) and (A.35) and the proof is complete.  $\square$

*Proof of Lemma A.1.* By definition of  $K$ ,  $\Lambda^{(0)} = \Lambda_r^{(0)} + \beta K$ . Thus thanks to Lemma A.2, we can write

$$\Lambda^{(0)} = \left( I + \beta K [\Lambda_r^{(0)}]^{-1} \right) \Lambda_r^{(0)}. \quad (\text{A.36})$$

It is then easy to conclude *via* Fredholm alternative, exactly as in the proof of Theorem 3.1, using the compactness of  $K$  (Lem. A.4) and the injectivity of  $\Lambda^{(0)}$  which is obvious since  $\alpha > 0$  and  $\beta > 0$ .  $\square$

## REFERENCES

- [1] R.A. Adams and J.J.F. Fournier, Sobolev spaces. In: Vol. 140 of *Pure and Applied Mathematics*. Elsevier Science (2003).
- [2] J.M. Ball, Y. Capdeboscq and B.T. Xiao, On uniqueness for time harmonic anisotropic Maxwell's equations with piecewise regular coefficients. *Math. Models Methods Appl. Sci.* **22** (2012) 1–9.
- [3] Y. Boubendir, X. Antoine and C. Geuzaine, A quasi-optimal non-overlapping domain decomposition algorithm for the Helmholtz equation. *J. Comput. Phys.* **231** (2012) 262–280.
- [4] Y. Boubendir, C. Jerez-Hanckes, C. Pérez-Arancibia and C. Turc, Domain Decomposition Methods based on quasi-optimal transmission operators for the solution of Helmholtz transmission problems. Preprint [arXiv:1710.02694](https://arxiv.org/abs/1710.02694) (2017).
- [5] F. Collino, S. Ghanemi and P. Joly, Domain decomposition method for harmonic wave propagation: a general presentation. *Comput. Methods Appl. Math.* **184** (2000) 171–211.
- [6] F. Demengel and G. Demengel, Functional Spaces for the Theory of Elliptic Partial Differential Equations. Springer-Verlag London (2012).
- [7] B. Després, Domain decomposition method and the Helmholtz problem (Part II). In: Second international conference on mathematical and numerical aspects of wave propagation. SIAM (1993) 197–206.
- [8] E. Di Nezza, G. Palatucci and E. Valdinoci, Hitchhiker's guide to the fractional sobolev spaces. Preprint [arXiv:1104.4345](https://arxiv.org/abs/1104.4345) (2011).
- [9] M.J. Gander and H. Zhang, A Class of Iterative Solvers for the Helmholtz Equation: Factorizations, Sweeping Preconditioners, Source Transfer, Single Layer Potentials, Polarized Traces, and Optimized Schwarz Methods. Preprint [arXiv:1610.02270](https://arxiv.org/abs/1610.02270) (2016).
- [10] M. Gander, L. Halpern and F. Magoulès, An optimized Schwarz method with two-sided Robin transmission conditions for the Helmholtz equation. *Int. J. Numer. Methods Fluids* **55** (2007) 163–175.
- [11] M. Gander, F. Magoulès and F. Nataf, Optimized Schwarz methods without overlap for the Helmholtz equation. *SIAM J. Sci. Comput.* **24** (2002) 38–60.
- [12] P. Grisvard, Elliptic Problems in Nonsmooth Domains. Society for Industrial and Applied Mathematics (2011).
- [13] S.P. Han, A globally convergent method for nonlinear programming. *J. Optim. Theory and Appl.* **22** (1977) 297–309.

- [14] P. Joly, F. Collino, M. Lecouvez and B. Stupfel, Quasi-local transmission conditions for non-overlapping domain decomposition methods for the helmholtz equation. *C.R. Phys.* **4310** (2014) 385–478.
- [15] M. Lecouvez, *Méthodes itératives de décomposition de domaine sans recouvrement avec convergence géométrique pour l'équation de Helmholtz*. Ph.D. thesis, Mathématiques appliquées Palaiseau, Ecole polytechnique, Thèse de doctorat dirigée par Joly Patrick (2015).
- [16] W. McLean, *Strongly Elliptic Systems and Boundary Integral Equations*. Cambridge University Press (2000).
- [17] J.-C. Nedelec, *Acoustic and Electromagnetic Equations: Integral Representations for Harmonic Problems*. Springer-Verlag (2001).
- [18] Z. Peng, V. Rawat and J.-F. Lee, One way domain decomposition method with second order transmission conditions for solving electromagnetic wave problems. *J. Comput. Phys.* **229** (2010) 1181–1197.
- [19] M.J.D. Powell, A fast algorithm for nonlinearly constrained optimization calculations, edited by G.A. Watson. In: *Numerical Analysis*, Vol. 630 of *Lecture Notes in Mathematics*. Springer Berlin Heidelberg (1978) 144–157.
- [20] E.M. Stein, Singular integrals and differentiability properties of functions. In: *Princeton mathematical series*. Princeton University Press (1970).
- [21] O. Steinbach and M. Windisch, Stable boundary element domain decomposition methods for the helmholtz equation. *Numer. Mathematik* **118** (2011) 171–195.
- [22] L. N. Trefethen and L. Halpern, Well-posedness of one-way wave equations and absorbing boundary conditions. *Math. Computation* **47** (1986) 421–435.
- [23] M. Vouvakis, K. Zhao, S.-M. Seo and J.-F. Lee, A domain decomposition approach for non-conformal couplings between finite and boundary elements for unbounded electromagnetic problems in  $R^3$ . *J. Comput. Phys.* **225** (2007) 975–994.