



The XXL Survey

B. Šlaus, V. Smolčić, M. Novak, S. Fotopoulou, P. Ciliegi, N. Jurlin, L. Ceraaj,
K. Tisanić, M. Birkinshaw, M. Bremer, et al.

► To cite this version:

B. Šlaus, V. Smolčić, M. Novak, S. Fotopoulou, P. Ciliegi, et al.. The XXL Survey: XLI. Radio AGN luminosity functions based on the GMRT 610 MHz continuum observations. *Astronomy and Astrophysics - A&A*, 2020, 638, pp.A46. 10.1051/0004-6361/201937258 . cea-02863069

HAL Id: cea-02863069

<https://cea.hal.science/cea-02863069>

Submitted on 9 Jun 2020

HAL is a multi-disciplinary open access archive for the deposit and dissemination of scientific research documents, whether they are published or not. The documents may come from teaching and research institutions in France or abroad, or from public or private research centers.

L'archive ouverte pluridisciplinaire **HAL**, est destinée au dépôt et à la diffusion de documents scientifiques de niveau recherche, publiés ou non, émanant des établissements d'enseignement et de recherche français ou étrangers, des laboratoires publics ou privés.

The XXL Survey

XLI. Radio AGN luminosity functions based on the GMRT 610 MHz continuum observations[★]

B. Šlaus¹, V. Smolčić¹, M. Novak², S. Fotopoulou^{3,4}, P. Ciliegi⁵, N. Jurlin^{6,7}, L. Ceraj¹, K. Tisanić¹, M. Birkinshaw⁸, M. Bremer⁸, L. Chiappetti⁹, C. Horellou¹⁰, M. Huynh^{11,12}, H. Intema¹³, K. Kolokythas¹⁴, M. Pierre¹⁵, S. Raychaudhury¹⁶, and H. Rottgering¹³

¹ Department of Physics, Faculty of Science, University of Zagreb, Bijenička cesta 32, 10000 Zagreb, Croatia
e-mail: bslaus@phy.hr

² Max Planck Institut für Astronomie, Königstuhl 17, 69117 Heidelberg, Germany

³ Center for Extragalactic Astronomy, Department of Physics, Durham University, South Road, Durham DH1 3LE, UK

⁴ Department of Astronomy, University of Geneva, ch. d'Ecogia 16, 1290 Versoix, Switzerland

⁵ INAF – Osservatorio Astronomico di Bologna, P. Gobetti 93/3, 40129 Bologna, Italy

⁶ ASTRON, the Netherlands Institute for Radio Astronomy, Postbus 2, 7990 AA Dwingeloo, The Netherlands

⁷ Kapteyn Astronomical Institute, University of Groningen, PO Box 800, 9700 AV Groningen, The Netherlands

⁸ H.H. Wills Physics Laboratory, University of Bristol, Tyndall Avenue, Bristol BS8 1TL, UK

⁹ INAF, IASF Milano, Via Corti 12, 20133 Milano, Italy

¹⁰ Chalmers University of Technology, Dept. of Space, Earth and Environment, Onsala Space Observatory, 439 92 Onsala, Sweden

¹¹ CSIRO Astronomy and Space Science, PO Box 1130, Bentley, WA 6102, Australia

¹² International Centre for Radio Astronomy Research (ICRAR), M468, The University of Western Australia, 35 Stirling Highway, Crawley, WA 6009, Australia

¹³ Leiden Observatory, Leiden University, Niels Bohrweg 2, 2333 CA Leiden, The Netherlands

¹⁴ Centre for Space Research, North-West University, Potchefstroom 2520, South Africa

¹⁵ AIM, CEA, CNRS, Université Paris-Saclay, Université Paris Diderot, Sorbonne Paris Cité 91191, Gif-sur-Yvette, France

¹⁶ Inter-University Centre for Astronomy and Astrophysics Ganeshkhind, Post Bag 4, Pune 411 007, India

Received 4 December 2019 / Accepted 29 January 2020

ABSTRACT

We study the space density evolution of active galactic nuclei (AGN) using the 610 MHz radio survey of the XXL-North field, performed with the Giant Metrewave Radio Telescope. The survey covers an area of 30.4 deg², with a beamsize of 6.5 arcsec. The survey is divided into two parts, one covering an area of 11.9 deg² with 1σ rms noise of 200 μJy beam⁻¹ and the other spanning 18.5 deg² with rms noise of 45 μJy beam⁻¹. We extracted the catalog of radio components above 7σ. The catalog was cross-matched with a multi-wavelength catalog of the XXL-North field (covering about 80% of the radio XXL-North field) using a likelihood ratio method, which determines the counterparts based on their positions and their optical properties. The multi-component sources were matched visually with the aid of a computer code: Multi-Catalog Visual Cross-Matching. A flux density cut above 1 mJy selects AGN hosts with a high purity in terms of star formation contamination based on the available source counts. After cross-matching and elimination of observational biases arising from survey incompleteness, the number of remaining sources was 1150. We constructed the rest-frame 1.4 GHz radio luminosity functions of these sources using the maximum volume method. This survey allows us to probe luminosities of $23 \leq \log(L_{1.4\text{GHz}}[\text{W Hz}^{-1}]) \leq 28$ up to redshifts of $z \approx 2.1$. Our results are consistent with the results from the literature in which AGN are comprised of two differently evolving populations, where the high luminosity end of the luminosity functions evolves more strongly than the low-luminosity end.

Key words. galaxies: nuclei – radio continuum: galaxies – accretion, accretion disks – galaxies: evolution – galaxies: active

1. Introduction

It is now widely accepted that the evolution of active galactic nuclei (AGN) is closely related to the evolution of their host galaxies by a process called AGN feedback (e.g., Heckman & Best 2014). Indirect proof of this connection can be deduced from the correlations between the masses of the central super-

massive black hole and the properties of the host galaxies, for instance, the stellar velocity dispersion, the stellar mass of the bulge, or the bulge luminosity (Magorrian et al. 1998; Ferrarese & Merritt 2000; Gebhardt et al. 2000; Graham et al. 2011; Sani et al. 2011; Beifiori et al. 2012; McConnell & Ma 2013). A more direct proof for the importance of AGN feedback comes from the observation of galactic winds (e.g., Nesvadba et al. 2008; Feruglio et al. 2010; Veilleux et al. 2013; Tombesi et al. 2015) and X-ray cavities in groups and clusters of galaxies (Clarke et al. 1997; Rafferty et al. 2006; McNamara & Nulsen 2007; Fabian 2012; Nawaz et al. 2014; Kolokythas et al. 2015).

[★] A copy of the multi-wavelength cross-matched catalog is available at the CDS via anonymous ftp to cdsarc.u-strasbg.fr (130.79.128.5) or via <http://cdsarc.u-strasbg.fr/viz-bin/cat/J/A+A/638/A46>

Furthermore, AGN feedback has become an essential element of state-of-the-art models of galaxy evolution (e.g., Croton et al. 2016; Harrison et al. 2018). However, the mechanism of AGN feedback is not fully understood (e.g., Cattaneo et al. 2009; Naab & Ostriker 2017). A useful tool to help understand these mechanisms and the timescales at which they are present is to study the evolution of radio luminosity functions (e.g., Smolčić et al. 2009; Rigby et al. 2015; Pracy et al. 2016; Novak et al. 2018).

In order to disentangle the physical processes governing AGN evolution, accretion onto the central supermassive black hole, and the feedback mechanism, prior studies classify their radio sources into a number of distinct subsets. Concentrating on the underlying physics, studies generally suggest two fundamentally distinct populations. The first population consists of radiatively efficient AGN for which the accretion of cold gas onto the central black hole occurs at high Eddington ratios, λ_{Edd} , of 1% to 10% (Heckman & Best 2014; Smolčić et al. 2017a; Padovani et al. 2017). This population is the one corresponding to the unified model of AGN widely present in the literature (e.g., Urry & Padovani 1995; Netzer 2015). The second population is the radiatively inefficient population in which the accretion at lower Eddington ratios, typically $\lambda_{\text{Edd}} \lesssim 1\%$, is fueled by the hot intergalactic medium. This population is more prone to developing collimated jets (Heckman & Best 2014). The different accretion efficiencies of the two populations seem to result from the differing physics between the optically thick geometrically thin disk accretion flow, which is radiatively efficient (Shakura & Sunyaev 1973), and the geometrically thick optically thin accretion flow (Narayan et al. 1998), as suggested by a number of studies (e.g., Hardcastle et al. 2007; Heckman & Best 2014). Since the radiatively efficient mode exhibit emission lines in the optical spectra (due to the photoionization by the luminous disk), it is associated with high-excitation AGN. Depending on the strength of these lines the radio population is also often divided into high-excitation radio galaxies (HERGs) and low-excitation radio galaxies (LERGs) (Best & Heckman 2012). Studies of the HERG and LERG radio luminosity functions in the local universe found that LERGs are the dominant population at luminosities below $L_{1.4\text{GHz}} \approx 10^{26} \text{ W Hz}^{-1}$, while HERGs dominate at the highest luminosities (Pracy et al. 2016; Best & Heckman 2012). The literature also suggests that AGN space density evolution is dependent on radio luminosity (e.g., Smolčić et al. 2009; Willott et al. 2001; Waddington et al. 2001; Rigby et al. 2011; McAlpine et al. 2013). It has been shown that the space density of the high-luminosity population evolves strongly with redshift up to $z \approx 2$. (Dunlop & Peacock 1990; Willott et al. 2001; Pracy et al. 2016), while the low-luminosity population exhibits little evolution (Clewley & Jarvis 2004; Smolčić et al. 2009). The different evolution may be related to the different accretion modes.

Unlike optical surveys, radio observations are not affected by dust attenuation from the interstellar medium or absorbed by the Earth's atmosphere. Since high-luminosity sources are rare, in order to observe more of these sources, the area of observation must be large. The sensitivity of the observations, on the other hand, is the limiting factor concerning the observed redshifts. Here we present the radio luminosity functions of AGN within the XXL-North field, at 610 MHz (Pierre et al. 2016; Smolčić et al. 2018). The observations cover a wide area (30.4 deg^2) at high sensitivity (up to $45 \mu\text{Jy beam}^{-1}$) to constrain the evolution of the intermediate radio-luminosity population ($23 \lesssim \log(L_{1.4\text{GHz}}[\text{W Hz}^{-1}]) \lesssim 28$) out to $z \approx 2$ at high sensitivity.

The paper is organized as follows. In Sect. 2 we describe the radio data and the corresponding multi-wavelength identifica-

tions of radio sources. In Sect. 3 we describe the process of cross-matching via the likelihood ratio method. Section 4 describes the creation of the luminosity functions, while Sect. 5 presents the results and compares them with the literature. Results are discussed in Sect. 6, while the summary and conclusion are given in Sect. 7. Throughout this paper we use a cosmology defined with $H_0 = 70 \text{ km s}^{-1} \text{ Mpc}^{-1}$, $\Omega_m = 0.3$, and $\Omega_\Lambda = 0.7$. The spectral index, α , was defined using the convention in which the radio emission is described as a power law, $S_\nu \propto \nu^\alpha$, where ν denotes the frequency, while S_ν is the flux density. We also use the AB magnitude system.

2. Data

2.1. Radio data

The radio observations of the XXL-North field were performed at 610 MHz with the Giant Metrewave Radio Telescope (GMRT). The final mosaic of 79 pointings encompasses an area of 30.4 deg^2 . Observations of the inner 36 pointings (the XMM-Large Scale Structure, XMM-LSS field) were taken from an earlier study by Tasse et al. (2007), and re-reduced for the purposes of this study. They encompass an area of 11.9 deg^2 and reach a mean rms of $200 \mu\text{Jy beam}^{-1}$. The remaining 18.5 deg^2 , observed by Smolčić et al. (2018; hereafter XXL Paper XXIX) have a mean rms of $45 \mu\text{Jy beam}^{-1}$. The FWHM of the synthesized beam across the entire mosaic is 6.5 arcsec . The data reduction and imaging were performed using the Source Peeling and Atmospheric Modeling (SPAM) pipeline (Intema et al. 2009, 2017). Source extraction, performed with the PyBDSF¹ software (Mohan & Rafferty 2015), resulted in the identification of 5434 sources with a conservative signal-to-noise ratio of $S/N \geq 7$.

A pre-selection of possible multi-component sources was performed via an automatic method following the methods in Tasse et al. (2006). All sources whose separations were within 60 arcsec were tagged in a separate catalog column. An additional flux limit of $S_{610\text{MHz}} > 1.4 \text{ mJy}$ was introduced in the outer parts of the field, justified by the size-flux relation for radio sources, where larger sources emit more flux (Bondi et al. 2003). For the final classification of multi-component sources see Sect. 3.2. The radio catalog also contains spectral indices estimated using the NRAO Very Large Array Sky Survey (NVSS; Condon et al. 1998). For further details concerning the GMRT radio observations and the corresponding catalog we refer the reader to Paper XXIX.

2.2. Multi-wavelength catalog

The XXL-North field has been surveyed in a wide range of different bands (from radio to X-ray). In the current paper we use only the subset of the catalog that has identifications in the *Spitzer* Infrared Array Camera (IRAC) Channel 1 band at $3.6 \mu\text{m}$ (PI M. Bremer, limiting magnitude of 21.5 AB). This provides us with a catalog of uniform density and depth. The photometric redshifts of the IRAC-detected sources are obtained from the full multi-wavelength data (Fotopoulou, in prep.).

The wealth of data allowed the creation of a multi-wavelength catalog of the XXL-North field and the calculation of photometric redshifts. The creation of the photometric catalog can be found in Fotopoulou et al. (2016) (XXL Paper VI),

¹ <https://www.astron.nl/citt/pybdsf/>

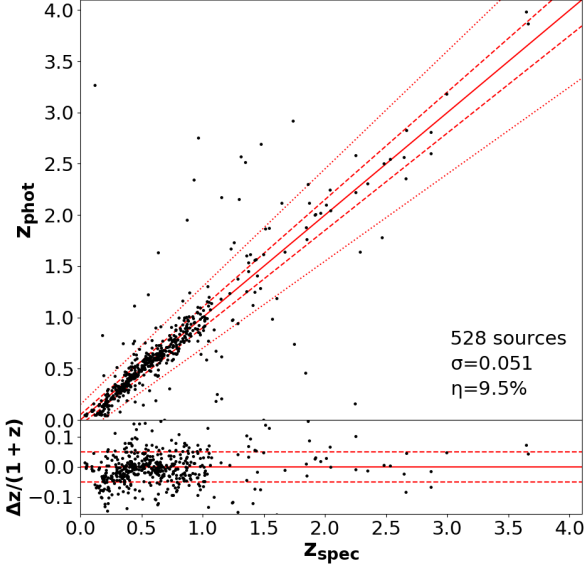


Fig. 1. Comparison between the spectroscopic (z_{spec}) and the photometric (z_{phot}) redshifts for 528 sources with good quality spectra. For the definition of accuracy σ and the percentage of catastrophic outliers η , see the text. *Bottom panel:* renormalized accuracy, defined as denoted in the figure.

while the photometric redshift estimation method is described in detail in Fotopoulou & Paltani (2018). We cross-matched the photometric catalog with Sloan Digital Sky Survey Data Release 14 (SDSS DR14) and our database of spectroscopic follow-up redshift observations of the XXL survey (Adami et al. 2018, XXL Paper XX) and found 408 and 120 good quality spectra within 1 arcsec from the GMRT counterpart. Based on this spectroscopic sample, the photometric redshifts of the radio counterparts reach an accuracy of $\sigma_{\text{NMAD}} = 0.05$ with $\eta = 9.5\%$ catastrophic outliers². The comparison between the photometric and the spectroscopic redshifts is shown in Fig. 1. The solid line shows the one-to-one relationship, while the dashed and dotted lines correspond to $z_{\text{phot}} = 0.05 \cdot (1 + z_{\text{spec}})$ and $z_{\text{phot}} = 0.15 \cdot (1 + z_{\text{spec}})$, respectively.

As shown in Fig. 2, the *Spitzer* IRAC 3.6 μm map does not cover the area of our radio observations completely. The overlap of the radio data with the IRAC coverage is 8.0 deg² (roughly 67%) for the inner part of the radio mosaic and 16.7 deg² (i.e., roughly 90%) for the outer parts (or roughly 80% for the complete XXL-North field). The majority of sources lie in the outer (and deeper) part of the mosaic, which is well covered by the IRAC survey.

3. Cross-matching of sources

3.1. Mean positional offsets

Prior to the cross-matching of sources, we assessed the mean systematic offset between the GMRT and IRAC source positions. We performed a simple match between the two fields based solely on the source positions, selecting only sources whose positional offset is 1 arcsec or less. We show the positional differences between the two surveys in Fig. 3. To minimize the contribution from spurious counterparts we limited the GMRT

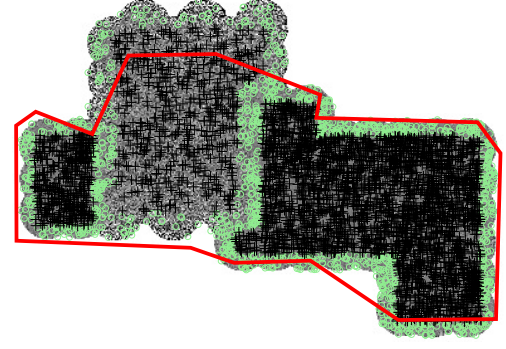


Fig. 2. *Spitzer* IRAC 3.6 μm coverage of the XXL-North field. The gray map corresponds to the GMRT 610 MHz mosaic. The red region denotes the IRAC data. The largest mismatch occurs in the inner part of the radio field, where the number of sources is lower. The sources in the radio catalog are denoted by green circles and black crosses. Sources marked by green symbols correspond to the noisy edges, as described in the text.

radio sample to unresolved sources with signal-to-noise ratio of $S/N > 10$. The obtained matches, although highly incomplete, were considered very reliable. The mean positional offset in the RA and Dec coordinates between the GMRT and the IRAC positions of the matched sources are

$$\overline{\Delta \text{RA}} = (0.02 \pm 0.03) \text{ arcsec}, \quad (1)$$

$$\overline{\Delta \text{Dec}} = (0.07 \pm 0.02) \text{ arcsec}, \quad (2)$$

for the inner (XMM-LSS) part of the GMRT mosaic, and

$$\overline{\Delta \text{RA}} = (0.104 \pm 0.008) \text{ arcsec}, \quad (3)$$

$$\overline{\Delta \text{Dec}} = (0.02 \pm 0.01) \text{ arcsec}, \quad (4)$$

for the rest of the XXL-North field. Although the offsets were not large, we eliminated them from further considerations by correcting the relative distances between the sources.

3.2. Multi-component sources

Sources with complex morphologies might be recovered not as single objects, but as a collection of components due to a limited surface brightness sensitivity of radio surveys (Schinnerer et al. 2004, 2007; Smolčić et al. 2017a). This will introduce errors during the cross-matching with other surveys and affect the luminosity functions. We performed a multi-component source classification by visually inspecting sources pre-selected via the automatic method described in Sect. 2.1. In order to expedite the process we used the publicly available Multi-Catalog Visual Cross-Matching (MCVCM) package³, which simplifies the visual cross-matching, by producing IRAC 3.6 μm images of the sources with overlaid radio contours. An example of the created images can be seen in Fig. 4. The radio core and lobe components as well as the infrared centroid were selected manually by visual inspection. Using this method, we classified 381 components belonging to multi-component sources. The radio fluxes of these components were summed and their positions taken to be that of the IRAC (infrared detected) centroid source. The final number of multi-component sources was 157. The sources matched with this method were excluded from further matching via the likelihood ratio method, described in the following sections.

² The accuracy is defined as $\sigma = 1.48 \frac{|z_{\text{phot}} - z_{\text{spec}}|}{1 + z_{\text{spec}}}$ and the number of catastrophic outliers is the fraction of sources with $N \left[\frac{|z_{\text{phot}} - z_{\text{spec}}|}{1 + z_{\text{spec}}} \right] > 0.15$.

³ <https://github.com/kasekun/MCVCM>

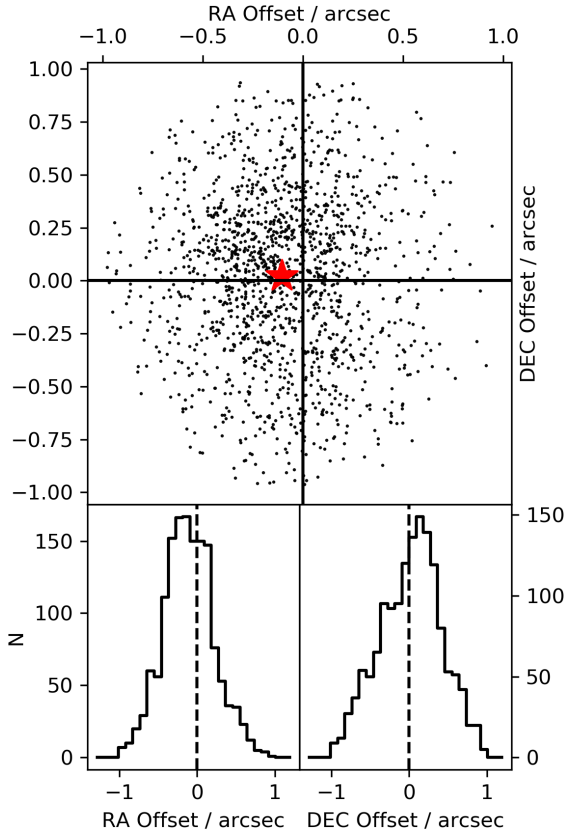


Fig. 3. Astrometric offsets between the GMRT and IRAC surveys for the outer part of the XXL-North field. The mean offset is denoted by a red star. The histograms in the *bottom panels* represent the distribution of offsets in the RA and Dec directions. The inner part of the XXL-North field produces a consistent plot.

The automatic method described in Sect. 2.1, although generally reliable, missed six conspicuous multi-component galaxies due to the size of these sources (more than 60 arcsec). These six large galaxies were therefore re-matched manually (using again the MCVCM program). In the final catalog from Paper XXIX they are denoted by the following names: XXL-GMRT J023357.0–050753, XXL-GMRT J023110.7–053314, XXL-GMRT J021659.0–044837, XXL-GMRT J021003.1–052825, XXL-GMRT J020759.2–065019, XXL-GMRT J020354.8–041356. Two of these galaxies (XXL-GMRT J021003.1–052825 and XXL-GMRT J020354.8–041356) were studied in detail by Horellou et al. (2018), XXL Paper XXXIV.

3.3. Likelihood ratio method

For the cross-matching of single-component sources, between the GMRT XXL-North 610 MHz survey and the IRAC survey, we used the likelihood ratio (LR) method (Sutherland & Saunders 1992; see also de Ruiter et al. 1977; Ciliegi et al. 2003; Brusa et al. 2007; Mainieri et al. 2008; Smith et al. 2011; Bonzini et al. 2012; McAlpine et al. 2012; Fleuren et al. 2012; Kim et al. 2012). The LR of each possible identification is defined as the probability between the source being a true counterpart and it being an unrelated background object. By assuming that the optical properties of the sources are independent of their positional offsets (Sutherland & Saunders 1992; Ciliegi et al. 2003), the expression for LR becomes

$$\text{LR} = \frac{f(r)q(m)}{n(m)}, \quad (5)$$

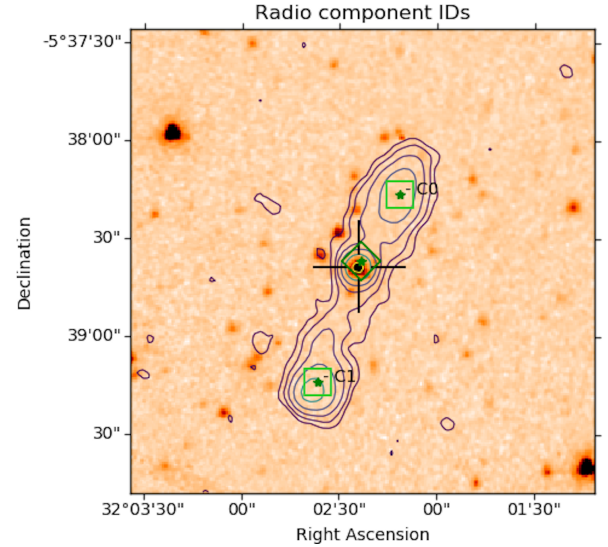


Fig. 4. Example of the image created by the MCVCM program. The radio contours (chosen as $2'' \times \text{rms}$, $n = 1, 2, 3 \dots$) are overlaid on the IRAC image. The radio and IRAC selection is performed visually. The black crosshair denotes the IRAC counterpart position. The dark green rhomboid denotes the radio core position, while the light green squares denote the center of the radio lobes.

where $f(r)$ is the probability distribution of the positional offsets between the surveys, $q(m)$ the expected magnitude distribution of true counterparts, and $n(m)$ the surface density of the unrelated background objects given as a function of magnitude. The magnitudes here correspond to the IRAC $3.6 \mu\text{m}$ magnitudes of the possible counterparts of the radio sources.

3.4. Estimation of $f(r)$

For the radial probability distribution of positional offsets we used a Gaussian function (Ciliegi et al. 2003; Smith et al. 2011; Bonzini et al. 2012; McAlpine et al. 2012; Fleuren et al. 2012; Kim et al. 2012)

$$f(r) = \frac{1}{\sqrt{2\pi}\sigma^2} \exp\left(-\frac{r^2}{2\sigma^2}\right), \quad (6)$$

where r denotes the separation between the GMRT 610 MHz and the IRAC $3.6 \mu\text{m}$ source positions. The standard deviation of the distribution σ is obtained from the positional uncertainties of both surveys σ_{GMRT} and σ_{IRAC} . Following Ciliegi et al. (2003) we defined the standard deviation as

$$\sigma = \sqrt{\sigma_{\text{IRAC}}^2 + \sigma_{\text{GMRT}}^2}. \quad (7)$$

For the GMRT data we used the positional errors listed in the radio source catalog provided by PyBDSF (with a mean value of around 0.2 arcsec for both parts of the field and both coordinates). The IRAC positional errors were calculated from the full width at half maximum (FWHM) of the IRAC $3.6 \mu\text{m}$ beam and the signal-to-noise ratio of each source (S/N), following Ivison et al. (2007) and Furlanetto et al. (2018) as

$$\sigma = 0.6 \frac{\text{FWHM}}{S/N}. \quad (8)$$

Furthermore, the errors were not allowed to be smaller than 0.2 arcsec (roughly one-third of the mean positional error which

was about 0.6 arcsec) to account for the minimum positional uncertainty as discussed in [Smith et al. \(2011\)](#). In order to account for possible anisotropies in the positional errors, we calculated σ separately in the RA and Dec directions. The final standard deviation, used in the probability distribution of positional offsets, is the mean value between the two. Although $f(r)$ is normalized to unity for radii spanning to infinity, in practice a fixed value of maximum radius is set during the cross-matching. The maximum allowed separation R is called the matching radius. In this paper we used a matching radius of 4 arcsec.

3.5. Estimation of $n(m)$

The background source density as a function of magnitude $n(m)$ was obtained by normalizing the magnitude distribution of the complete IRAC 3.6 μm catalog by the area of the IRAC 3.6 μm survey ([Smith et al. 2011](#), [Furlanetto et al. 2018](#)). Our main assumption here is that the shape of the background magnitude distribution is equal to the shape of the magnitude distribution of the complete IRAC catalog, which is sufficiently accurate if the number of real identifications is much smaller than the total number of IRAC sources.

Since the number of radio sources is small we can assume that the circles defined by the matching radius R do not overlap. The average number of unrelated background objects within the area defined by the matching radius R around each radio source is given then by

$$\text{false}(m) = n(m) \cdot N_{\text{Radio}} \cdot \pi R^2, \quad (9)$$

where N_{Radio} is the number of radio sources, corresponding only to the sources within the area covered by both GMRT XXL-North 610 MHz and IRAC surveys (roughly 80% of the area of the mosaic, as described in Sect. 2.2).

3.6. Estimation of $q(m)$

To estimate the expected distribution of true counterparts, $q(m)$, we created the magnitude distribution of the total number of possible counterparts within the matching radius $R = 4$ arcsec, $\text{total}(m)$. This distribution also contains the false counterpart identifications arising from the unrelated background sources (Eq. (9)). Following [Ciliegi et al. \(2003\)](#), we constructed a new magnitude distribution, $\text{real}(m)$, which is the difference between the total and the background distributions:

$$\text{real}(m) = \text{total}(m) - \text{false}(m). \quad (10)$$

This excess of sources compared to the background distribution represents the expected real identifications. The resulting distribution was further normalized as

$$q(m) = \frac{\text{real}(m)}{\sum_m \text{real}(m)} \cdot Q, \quad (11)$$

where the sum in the denominator sums the $\text{real}(m)$ distribution over magnitudes. The Q factor is the fraction of true counterparts above the magnitude limit ([Smith et al. 2011](#)), i.e., a correction for the limiting magnitude of our observations. It was calculated by summing the $\text{real}(m)$ distribution and dividing it by the number of radio sources (in the intersection):

$$Q = \frac{\sum_m \text{real}(m)}{N_{\text{Radio}}}. \quad (12)$$

The value of Q is 0.62 for the outer part of the field and 0.55 for the inner. It should be noted, however, that the value of Q does not

affect the results of the cross-matching significantly, as already noted by earlier studies ([Ciliegi et al. 2003](#); [Franceschini et al. 2006](#); [Fadda et al. 2006](#); [Mainieri et al. 2008](#)).

3.7. Blocking effect

A further complication arises because of the tendency of radio sources to have bright counterparts ([Ciliegi et al. 2018](#), hereafter XXL Paper XXVI). Some faint IRAC sources around these bright infrared counterparts remain undetected. Since the total number of counterparts is calculated within the matching radius around the radio positions, this leads to the underestimating of the $\text{total}(m)$ magnitude distribution. We call this effect the blocking effect, since the faint IRAC sources are blocked by the bright ones. On the other hand, the background density distribution $n(m)$, obtained from the complete IRAC catalog, is not significantly affected by this effect since the number of bright sources in the complete catalog is small. It follows that at faint magnitudes the $\text{real}(m)$ distribution becomes underestimated and even assumes unphysical negative values. The magnitude distributions are presented in Fig. 5. This effect and the required correction have already been discussed by [Brusa et al. \(2007\)](#), [Smolčić et al. \(2017b\)](#), and in Paper XXVI.

In order to account for the missing sources we recalculated the magnitude distribution of the unrelated background sources following [Brusa et al. \(2007\)](#) and Paper XXVI. First we selected a random sample of 5000 sources from the IRAC catalog that followed the same magnitude distribution as the $\text{total}(m)$ counterparts. We then used these sources as a mock radio catalog and re-counted the remaining IRAC sources in their vicinity (within $R = 8$ arcsec). By re-normalizing this number to the number of radio sources and the correct matching radius with a factor

$$\frac{N_{\text{Radio}} \cdot \pi \cdot (4 \text{ arcsec})^2}{5000 \cdot \pi \cdot (8 \text{ arcsec})^2}, \quad (13)$$

we were able to obtain the new estimate for the background magnitude distribution. The main advantage of the new background estimate was that, by definition, it included the blocking effect present within the IRAC catalog. In other words, the new background density is no longer overestimated compared to the number of total counterparts since it was also calculated around other bright IRAC sources. The resulting background distribution was consistent with the global one for bright magnitudes, but differed strongly for faint magnitudes. We therefore took the global background distribution at bright magnitudes down to a fixed limit of $m_{\text{AB}} = 20.5$ in IRAC magnitudes. At fainter magnitudes we used the new estimation (based on the mock radio catalog) of the background distribution described above, which resulted in a larger number of faint identifications considered real. The distributions estimated by this method are shown in Fig. 5.

3.8. Cross-matching results

Following the literature (e.g., [Mainieri et al. 2008](#); Paper XXVI), we limited the final catalog to sources with $\text{LR} > 0.2$. In addition to the likelihood ratio, we can also define the reliability (e.g., [Franceschini et al. 2006](#); [Fleuren et al. 2012](#); [Butler et al. 2018a](#), hereafter XXL Paper XVIII) as

$$\text{Rel}_i = \frac{\text{LR}_i}{\sum_i \text{LR}_i + (1 - Q)}, \quad (14)$$

where Q is given by Eq. (12). In the case of multiple identifications with $\text{LR} > 0.2$ we chose the counterpart with the largest reliability

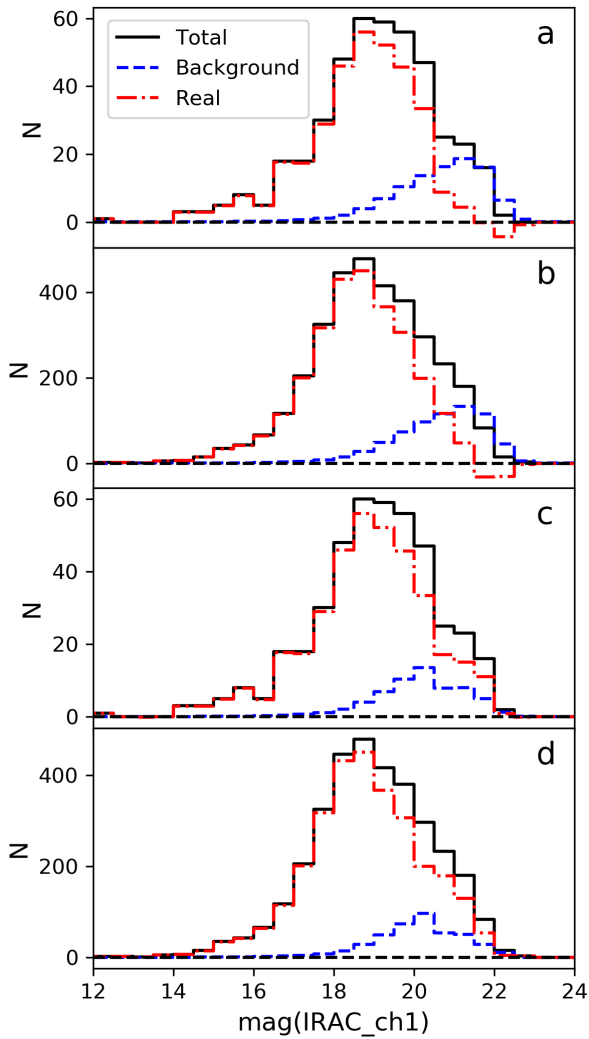


Fig. 5. Magnitude distribution of sources during the matching process. The black, blue, and red lines denote the total, background, and real sources, respectively, as described in the text. The two upper histograms (panels *a* and *b*, for the inner and outer part of the field, respectively) correspond to the match where the blocking effect is present. Correction for blocking effects mitigates the issue of negative counts. The two bottom histograms (panels *c* and *d*, for the inner and outer part of the field, respectively) are the magnitude distributions after the blocking effect has been accounted for.

(Mainieri et al. 2008; Paper XVIII) resulting in 3336 sources (see Table 1). Finally, we excluded sources lying in the noisy edges of the radio map since the rms noise was deemed too high (see Fig. 2). The edges were defined manually, as described by Paper XXIX (see Fig. 5 from that paper for noise distribution). The final matched catalog, which also includes the visually matched sources, consists of 2467 sources in the outer part of the field and 318 in the inner (2785 in total, see Table 1). This corresponds in total to roughly 60% of the sources in the intersection being matched. All of the matched sources have a reliable redshift estimation. Concentrating on only the area away from the noisy edges, the percentage of matches is around 67%, which is in agreement with the literature for similar surveys (e.g., Paper XXVI).

3.9. Source catalog description

The results of the cross-matching performed within this work were compiled into a source catalog. The radio positions and

the corresponding uncertainties were provided by the PyDBSF, and taken from an earlier catalog described in Paper XXIX and briefly discussed in Sect. 2.1. The flux densities come from the same radio catalog. The photometric redshift is obtained from the multi-wavelength counterpart catalog (Fotopoulou, in prep.) described in Sect. 2.2. As already stated in Sect. 3.2, some of the sources were matched manually using the MCVCM package. These sources are present in the catalog, but are lacking some of the data (denoted by -99.99). The position of these sources is the position of the counterpart source and the integrated radio flux density is the sum of all the radio flux densities of the corresponding radio components. The columns are named as follows:

- Name: Name of the radio source
- ID: Numeric identifier of the radio source
- RA: Right ascension of the radio source
- Dec: Declination of the radio source
- E_RA: Uncertainty on the RA radio source position
- E_Dec: Uncertainty on the Dec radio source position
- Peak_flux: Peak radio flux density in Jy beam^{-1}
- rms: Local rms in Jy beam^{-1}
- Total_flux: Integrated flux density of the radio source in Jy
- E_Total_flux: Uncertainty on the integrated radio flux density
- Alpha: The spectral index of the source.
- RA_IRAC: Right ascension of the IRAC-detected counterpart
- Dec_IRAC: Declination of the IRAC-detected counterpart
- Photo_Z: Photometric redshift of the source
- LR: Likelihood ratio of the counterpart source as described in Sect. 3
- Area_Flag: Tag column denoting the inner (XMM-LSS) and outer part of the XXL-North field, described in Sect. 2.1. Zero denotes the inner part of the field.
- Edge_Flag: Tag column denoting the sources lying in the noisy edges of the field. Zero denotes sources on the edge.
- New_Flag: Tag column denoting newly created multi-component sources matched manually with MCVCM. New sources: 1; new sources with names identical to the sources from the Paper XXIX catalog: 2.

The catalog is available as queryable database table `XXL_GMRT_17_ctpt` via the XXL Master Catalogue browser⁴. A copy will also be deposited at the Centre de Données astronomiques de Strasbourg (CDS)⁵.

3.10. Missing counterparts: comparison with the COSMOS data

Since the IRAC data used in the cross-matching are of medium-depth ($m_{\text{AB}} = 21.5$) it is necessary to assess the number of sources that are lost during the matching process and how this deficit of sources scales with redshift. To examine this problem, we used the deeper radio data from the VLA–COSMOS 3 GHz Large Project detected above a 5σ threshold of $11.5 \mu\text{Jy}$ (Smolčić et al. 2017a,b). Smolčić et al. (2017b) cross-matched the 3 GHz data with the multi-wavelength COSMOS2015 catalog (Laigle et al. 2016), which contains Channel 1 IRAC sources (as described by Laigle et al. 2016). The cross-matching of the 3 GHz and IRAC data found counterparts for $\approx 93\%$ of radio sources (see Smolčić et al. 2017b for details). We imposed a threshold in flux density on the COSMOS data equal to our radio detection limit ($350 \mu\text{Jy}$ shifted to

⁴ <http://cosmosdb.iasf-milano.inaf.it/XXL>

⁵ <http://cdsweb.u-strasbg.fr/>

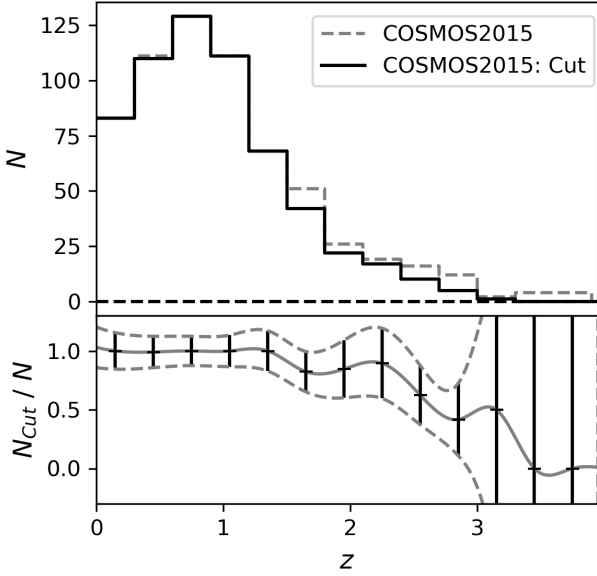


Fig. 6. *Upper panel:* redshift histograms of the COSMOS2015 catalog with the radio cut (dashed gray line) and the histogram with an additional cut in the infrared flux corresponding to the IRAC detection limit of our survey (black line). *Bottom panel:* ratio of these two histograms to the corresponding standard deviation. A cubic interpolation has been performed on both the data points and the error bars.

COSMOS frequencies by assuming a power law and a mean spectral index of -0.7) in order to mimic our radio data. This also ensures that this subsample of COSMOS sources is complete over all redshifts studied with our data ($0.1 < z < 2.1$; see Fig. 16 from Smolčić et al. 2017a or Fig. 1 from Delvecchio et al. 2017 for details). We created the redshift histogram of this dataset. Then we examined the same dataset with an additional threshold corresponding to the IRAC detection limit of our survey, and re-created the redshift histogram. The comparison between these two histograms quantifies the sources lost during the cross-matching. The histograms detailing the redshift dependency of the comparison can be seen in Fig. 6. The bottom panel of Fig. 6 shows the ratio of the two distributions which we regarded as the necessary correction $C_{\text{IRAC}}(z)$. For the standard deviation of the histograms we assumed the Poissonian deviation, which scales with the number of sources as \sqrt{N} except when the number of sources is lower than $N = 10$. In this situation we calculated the standard deviation as $N + \sqrt{N + 0.75}$, following the approximation for the upper limit error bars from Gehrels (1986). Since the deviation in these bins is rather large and we needed only a rough approximation, we presumed the error bars were symmetrical. It can be seen that around redshift of 3 the fraction drops to values of ≈ 0.5 and the uncertainties become very large (i.e., comparable with the values of the fraction). We therefore used only $z \leq 2.1$ data for the further analysis.

4. Radio luminosity functions of AGN

In this section we describe the creation of the luminosity functions of our sample. The photometric redshifts were taken from the multi-wavelength catalog (see Sect. 2.2). In Sect. 4.1 we describe the galaxy populations comprising our sample. In Sect. 4.2 we describe the computation of the luminosity functions via the maximum volume method. The complete account of the required corrections is described in Sect. 4.3 while details on the bin selection are given in Sect. 4.4.

4.1. Galaxy populations

Since we were interested in studying the evolution of AGN, we needed to assess the fraction of galaxy populations that constitute our sample. In order to do this, we used the VLA–COSMOS 3 GHz catalog described in detail in Smolčić et al. (2017b). The main assumption here is that the galaxy populations obtained from one survey are comparable to other surveys, neglecting the effects of cosmic variance. We focused on the radio-excess sources described in Smolčić et al. (2017b), as this criterion is a good tracer of all AGN in the radio regime. Smolčić et al. (2017b) defined the radio-excess sources when their radio luminosity $L_{1.4\text{ GHz}}$ exceeded an extracted star formation rate luminosity given by $\log(L_{1.4\text{ GHz}}/\text{SFR}_{\text{IR}}) = 21.984(1+z)^{0.013}$. The star formation rate SFR_{IR} was obtained by SED fitting from the total IR emission as described in Delvecchio et al. (2017). By plotting the source counts of sources with and without radio-excess (see Fig. 7), and calculating the fraction of radio-excess sources, we concluded that our sample consists mostly of AGN. It can be seen from the cumulative function given in Fig. 7 that at $7\sigma = 350\ \mu\text{Jy}$, which is the lowest detection limit of our survey, we still have a sample that consists of more than 98% AGN. However, the differential fraction in the middle panel of the figure shows that the fainter bins also contain star-forming galaxies (SFGs). In order to obtain a pure sample of AGN, we limited our sample to sources with flux density of $S_{610\text{ MHz}} > 1\text{ mJy}$. This threshold brought the number of sources down to 1266 (see Table 1).

4.2. Luminosity functions computation

For the creation of the luminosity functions we follow the procedure outlined in Novak et al. (2017), which relies on calculating the maximum observable volume for each galaxy (see Schmidt 1968; Felten 1976; Avni & Bahcall 1980; Page & Carrera 2000; Yuan & Wang 2013). The creation of luminosity functions is biased to the radio survey detection limit, so we take into account that the more luminous sources are detectable over larger distances (Page & Carrera 2000). The value of the luminosity function in each luminosity and redshift bin $\Phi(L, z)$ was calculated as the sum of inverse maximum volumes $1/V_{\text{Max},i}$. The uncertainty of the luminosity functions, σ_{Φ} , was calculated assuming Gaussian statistics (Marshall 1985; Boyle et al. 1988; Page & Carrera 2000; Novak et al. 2017) and is not applicable to bins with very few sources. When the number of sources was lower than 10, we used the tabulated errors determined by Gehrels (1986).

To calculate $V_{\text{Max},i}$, we divided the complete sample into redshift subsets. For each subset the $V_{\text{Max},i}$ estimation was performed independently. If the maximum volume exceeded the volume defined by the redshift bin, then the upper limit of the bin was used to determine V_{Max} . The spectral index was set to a fixed value of $\alpha = -0.7$, which is consistent with the mean value calculated in Paper XXIX. A fixed spectral index simplifies the bin selection process described in Sect. 4.4 by introducing a clear limit in the luminosity–redshift relationship. Furthermore, the luminosity functions were scaled to the area of observations A by dividing it by the area of the celestial sphere as $A/41\,253\text{ deg}^2$.

4.3. Corrections

During the calculation of V_{Max} a few corrections must be performed. The first correction accounts for the IRAC dataset depth. This correction is a function of redshift $C_{\text{IRAC}}(z)$ and accounts for the sources lost during the cross-matching of the radio catalog with the IRAC data. It was already discussed in Sect. 3.10. A second correction must be applied due to the presence of noise

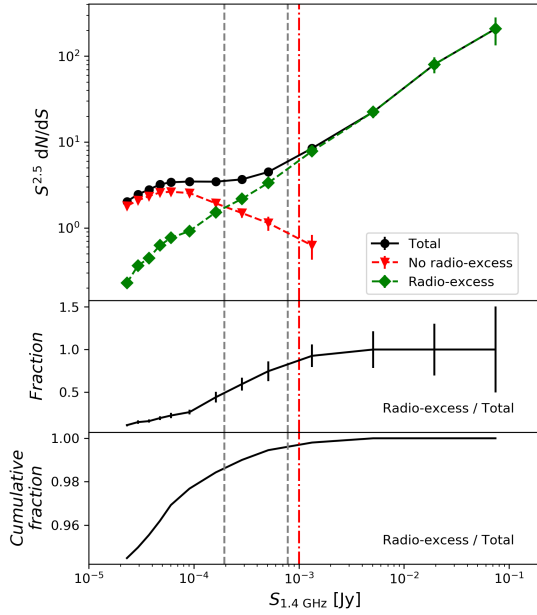


Fig. 7. *Top panel:* Euclidean-normalized and completeness-corrected source counts for different galaxy populations at 1.4 GHz reproduced from Smolčić et al. (2017b), as described in the text (symbols indicated in the legend). The vertical gray lines correspond to the 7σ detection limits of the inner and outer part of the XXL–North GMRT survey recalculated from 610 MHz by presuming a power law for the radio emission (see Sect. 1) and a spectral index of -0.7 . *Middle panel:* fraction of the radio-excess population. *Lower panel:* cumulative fraction of the radio-excess population summed from higher fluxes towards lower. The red dot-dashed line denotes the adopted flux threshold described in the text.

in the observed radio map. Since the local value of noise differs from the mean noise (used to select the sources with $S/N > 7$), it follows that the true flux densities of some sources can fall below the detection limit. To assess the resulting incompleteness, and the corresponding correction $C_{\text{Radio}}(S_{610\text{ MHz}})$, we used observations from a deeper survey, namely the VLA–COSMOS 3 GHz Large Project (see Smolčić et al. 2017a) and compared the source counts. The detailed account of this correction can be found in Paper XXIX.

The total correction applied to the GMRT–XXL radio data matched to IRAC counterparts was calculated following Novak et al. (2017) as the product of the above-mentioned corrections,

$$C_{\text{Total}} = C_{\text{IRAC}}(z) \times C_{\text{Radio}}(S_{610\text{ MHz}}), \quad (15)$$

where $C_{\text{IRAC}}(z)$ is shown in Fig. 6, while $C_{\text{Radio}}(S_{610\text{ MHz}})$ can be seen in Fig. 13 of Paper XXIX. The calculated values of V_{Max} were then multiplied by this number. After imposing a redshift and flux density threshold ($z \leq 2.1$, $S_{610\text{ MHz}} > 1\text{ mJy}$) described in Sects. 3.10 and 4.1, and merging the catalogs for the inner and outer parts of the XXL–North field, we were left with a catalog of 1150 sources, which was used in the creation of the luminosity functions (see Table 1).

4.4. Bin selection

A rather subtle effect was observed by Yuan & Wang (2013) which can lead to potential systematic errors. In short, if the redshift and luminosity bins are selected arbitrarily, the detection limit of the survey can introduce an unphysical bias. More specifically, because of the detection limit, there will be low-

Table 1. Number of sources, and corresponding area, after each step performed during the analysis and luminosity function creation, as described in the text.

Step	Area [deg ²]	$N(\text{Radio})$	$N(\text{Matched})$
Outer part of the XXL–North field			
Complete catalog	18.5	4615	(...)
IRAC coverage	16.7	4241	2954
Far from edge	14.2	3499	2467
$S_{610\text{ MHz}} > 1\text{ mJy}$	14.2	1605	948
$z \leq 2.1$	14.2	(...)	855
Inner part of the XXL–North field			
Complete catalog	11.9	819	(...)
IRAC coverage	8.0	596	382
Far from edge	6.3	477	318
$S_{610\text{ MHz}} > 1\text{ mJy}$	6.3	477	318
$z \leq 2.1$	6.3	(...)	295

Notes. The steps are performed progressively, i.e., each step also includes the previous ones.

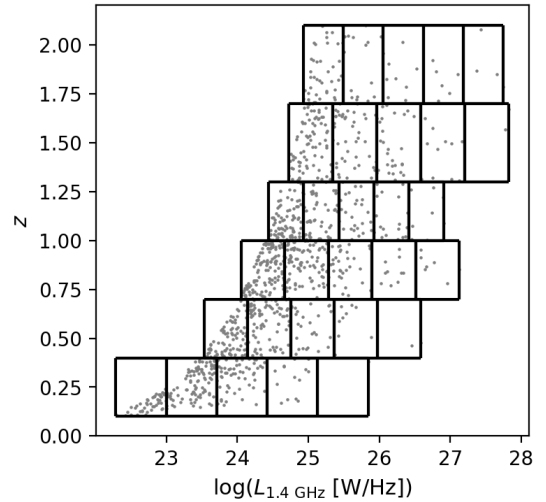


Fig. 8. Visual representation of the bins used in the creation of the luminosity functions. The gray dots represent the sources. The black lines correspond to the bin limits in redshift and luminosity. The absence of low-luminosity bins with only few sources is clearly visible. On the high-luminosity end the number of sources per bin decreases, but this effect is a consequence of the intrinsic lower density of high-luminosity sources and cannot be easily corrected.

luminosity bins which enclose a very small number of sources. Apart from the problems associated with small number statistics, $[V_{\text{Max}} \Delta \log L]$, present in the calculation of the luminosity functions, leads to an underestimation of $\Phi(L, z)$. As proposed by Yuan & Wang (2013), a simple way to reduce this effect is to choose the luminosity bins so that they start from the value determined by the detection limit. A visual representation of this can be seen by looking at the luminosity–redshift plot shown in Fig. 8. For each redshift bin, the luminosity bins are set to start from the line defined by the detection limit, a method that ensures that no low-luminosity bin contains very few objects.

5. Results

5.1. Luminosity functions

The resulting radio luminosity functions from $z = 0.1$ up to $z = 2.1$ are shown in Fig. 9. Since we made a comparison

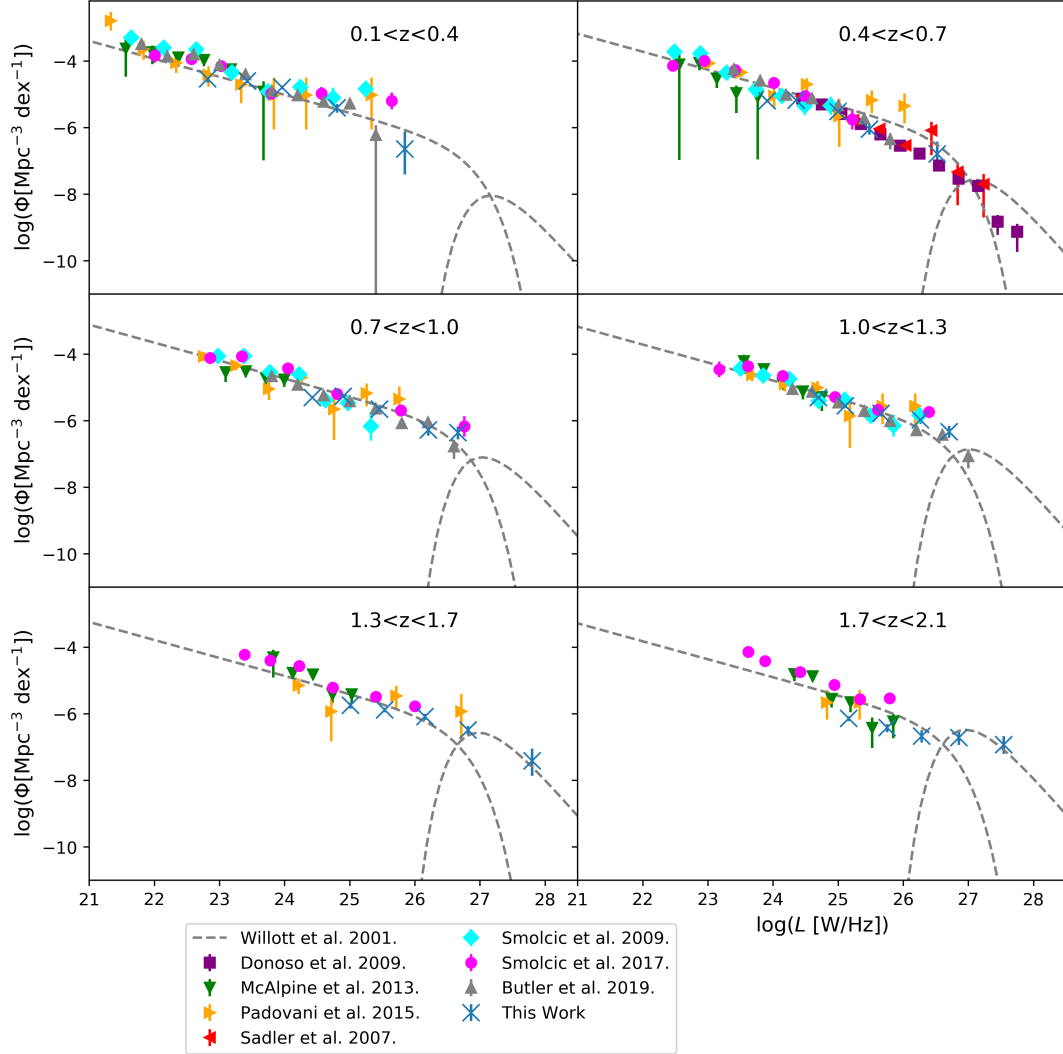


Fig. 9. Luminosity functions of this work along with previous ones at 1.4 GHz, as denoted in the legend. The dashed lines represent the bimodal model discussed in the text. This model consists of a high- and a low-luminosity end with different functional dependencies. It can be seen that at higher luminosities, the high-luminosity end of the model traces the data points well.

with luminosity functions at rest-frame 1.4 GHz, we also created the radio luminosity functions at this frequency (by assuming a power-law flux spectrum, and a spectral index of -0.7). The sampled luminosities depend on the redshift bin, with the maximum luminosities approaching $L_{1.4\text{ GHz}} = 10^{28} \text{ W Hz}^{-1}$, as can be seen from the figure.

5.2. Comparison with the literature

In Fig. 9 we compare our data to a number of other studies. We show the radio luminosity functions by Sadler et al. (2007) derived from the volume-limited sample of 391 radio galaxies with the optical spectra from the 2dF-SDSS (Sloan Digital Sky Survey) LRG (Luminous Red Galaxy) and QSO (quasi-stellar object) surveys (2SLAQ; Cannon et al. 2006) with Faint Images of the Radio Sky at Twenty centimetres (FIRST; Becker et al. 1995) and the NVSS radio coverage over redshifts $0.4 < z < 0.7$. They found that the radio emission in these sources most likely arises from AGN activity, rather than star formation.

The radio luminosity functions by Donoso et al. (2009) were derived from the sample of 14453 radio-loud (RL) AGN at redshifts $0.4 < z < 0.8$ detected at 1.4 GHz with NVSS and FIRST radio surveys, previously cross-matched with the

MegaZ-luminous red galaxy (MegaZ-LRG) catalog (Collister et al. 2007), derived from the Sloan Digital Sky Survey. The large number of sources resulted in the notably smaller error bars of these functions, compared to previous studies in this redshift range (e.g., Sadler et al. 2007).

The luminosity functions by Butler et al. (2019; hereafter XXL Paper XXXVI) come from a sample of 6287 sources from the 2.1 GHz observations of the XXL-South field, matched with the corresponding multi-wavelength catalog (Paper XVIII, Paper XXVI, Paper XXXVI). We show here the RL AGN, classified by their radio excess (see Butler et al. 2018b, XXL Paper XXXI, for classification details), which span redshifts up to $z = 1.3$. Our results are in good agreement with these surveys.

The luminosity functions by McAlpine et al. (2013) come from a survey of VIDEO-XMM3 field at 1.4 GHz, aiming to investigate the evolution of faint radio sources (up to $100 \mu\text{Jy}$), up to a redshift of $z \approx 2.5$. The radio observations were performed with the VLA, with the photometric redshifts coming from the cross-matching with the Visible and Infrared Survey Telescope for Astronomy Deep Extragalactic Observations (VIDEO; Jarvis et al. 2013) and Canada–France–Hawaii Telescope Legacy Survey (CFHTLS; Ilbert et al. 2006). The sample consist of both SFGs and AGN. The agreement between the AGN-related radio

luminosity functions is good, although the overlap in luminosities is not large since the luminosity functions by [McAlpine et al. \(2013\)](#) mostly sample lower luminosities.

The radio luminosity functions by [Padovani et al. \(2015\)](#) were derived from the sample of 680 sources detected and identified within Extended *Chandra* Deep Field South (E-CDFS; [Bonzini et al. 2012](#); [Miller et al. 2013](#)) using the 1.4 GHz radio data observed with the VLA and cross-matched with the available multi-wavelength data. They probe the faint radio sky down to μJy sources. Within the error bars, the agreement of their RL AGN luminosity functions with ours is good although the uncertainties become large at higher luminosities. This is due to a somewhat smaller area ($\approx 0.32 \text{ deg}^2$) analyzed by [Padovani et al. \(2015\)](#).

The luminosity functions by [Smolčić et al. \(2009\)](#) come from a sample of around 600 AGN detected within the 1.4 GHz VLA–COSMOS survey ([Schinnerer et al. 2007](#)). The luminosity functions consist of low-luminosity ($L_{1.4\text{GHz}} \leq 5 \times 10^{25} \text{ W Hz}^{-1}$) radio AGN at intermediate redshifts up to $z \approx 1.3$. The agreement with our data is good.

The luminosity functions by [Smolčić et al. \(2017c\)](#) come from the VLA–COSMOS 3 GHz Large Project mentioned in Sects. 3.10 and 4.1, together with the VLA–COSMOS 1.4 GHz Large and Deep Projects ([Schinnerer et al. 2004, 2007, 2010](#)). The sample consists of over 1800 radio AGN, up to redshifts of $z \approx 5$. The large depth of the survey ensured the small uncertainties even at high redshifts. The agreement with our data is good, although the overlap in luminosities becomes smaller at higher redshifts, given the difference in observed areas and depth of the surveys. Apart from the luminosity functions we also show the model by [Willott et al. \(2001\)](#) denoted by a gray dashed line. For details on this model see the discussion in Sect. 6.

6. Discussion

6.1. Cosmic evolution of the radio AGN population

Here we have derived the rest-frame 1.4 GHz radio luminosity functions for radio AGN out to $z \approx 2.1$ using the 610 MHz GMRT survey comprising of intermediate luminosity AGN ($23 \lesssim \log(L_{1.4\text{GHz}}[\text{W Hz}^{-1}]) \lesssim 28$) due to its $\sim 25 \text{ deg}^2$ surface area. Such luminosities are missed by deep radio surveys such as COSMOS/VIDEO which usually cover much smaller areas. In Fig. 9 we compared our values and the literature 1.4 GHz luminosity functions for radio AGN with the model presented by [Willott et al. \(2001\)](#). The authors obtained their sample from shallow but large area surveys, namely the 7C Redshift Survey (7CRS) and the 3CRR and 6CE surveys at brighter luminosities (see Fig. 1 in [Willott et al. 2001](#) for details on luminosity range) at low frequencies (151 for the 3CRR and 178 MHz for the other), which yielded 356 sources. The radio luminosity functions were modeled using a two-population model that assumes different shapes and evolution properties for the high- and low-luminosity ends of the sample. We concentrate here on “Model C” described by [Willott et al. \(2001\)](#). The low-luminosity end was modeled by a Schechter function (see relation 5 in [Willott et al. 2001](#)), while the high-luminosity end was modeled by a similar function (a Schechter function with inverted functional dependency for higher and lower luminosities; see relation 6 in [Willott et al. 2001](#)). The evolution of the low-luminosity end was modeled as a pure density evolution up to $z \approx 0.7$ (see Table 1 from [Willott et al. 2001](#)), after which the evolution ceases. The high-luminosity evolution was modeled by an asymmetric Gaussian function in redshift. The one-tailed

Gaussian rise to redshift $z \approx 2$ was allowed to have a different width than the one-tailed decline at higher redshifts (see Table 1 from [Willott et al. 2001](#) for exact values).

This evolution modeled by [Willott et al. \(2001\)](#) is consistent with the luminosity functions from this study. The standard Schechter form of the local luminosity function did not describe the data points at the high-luminosity end properly, given an excess in volume densities at high redshift and high luminosities. Therefore, following ([Smolčić et al. 2009](#)), we compared our luminosity functions to the model (Model C) and the evolution parameters from [Willott et al. \(2001\)](#), but recalculated to our cosmology and the frequency of 1.4 GHz. It can be seen, however, that the luminosity function model, determined by [Willott et al. \(2001\)](#), follows our data points well, which could suggest that the high-luminosity population of AGN evolves more rapidly than the low-luminosity end. The discrepancies at lower luminosities and high redshifts are known issues with the model (as discussed in [Willott et al. 2001](#)).

Furthermore, it is widely reported in the literature ([Willott et al. 2001](#); [Waddington et al. 2001](#); [Clewley & Jarvis 2004](#); [McAlpine et al. 2013](#); [Rigby et al. 2011, 2015](#)) that a difference exists between the evolution of high- and low-luminosity sources. When the sample is divided into high- and low-luminosity sources, the comparison is straightforward. These papers ([Waddington et al. 2001](#); [Clewley & Jarvis 2004](#); [Sadler et al. 2007](#); [Smolčić et al. 2009](#); [Donoso et al. 2009](#); [Padovani et al. 2017](#)) find a difference in the evolution of high- and low-luminosity sources, where the high-luminosity sources are the ones that evolve faster. We also mention here [McAlpine & Jarvis \(2011\)](#) since the radio data comes from the XMM-LSS field mentioned in Sect. 2.1 ([Tasse et al. 2007](#)). Their results are also consistent with this work, i.e., a bimodal evolution is found for high- and low-luminosity sources. Even in cases when the classification of sources is not identical to ours, the results lean towards a bimodal evolution. Whether the population is divided into RL and radio-quiet (RQ) AGN (e.g., [Padovani et al. 2015](#)) or into HERGs and LERGs (e.g., [Pracy et al. 2016](#); Paper XXXVI), the evolutionary trends are still consistent. In other words, even if the classification is not exactly one-to-one the data always seem to lean towards a bimodal evolution where the sources with higher luminosities evolve faster. This trend can be explained by invoking the bimodality in the underlying physical picture, as described in the next subsection. We note again that the luminosity functions presented here simultaneously reach high luminosities ($\log(L_{1.4\text{GHz}}[\text{W Hz}^{-1}]) \approx 28$) and redshifts ($z \approx 2.1$).

6.2. Physical interpretation

The results, from this study and from the literature, can be explained by an underlying physical picture of the AGN outlined in the introduction. Evidence exists for two physically different AGN populations (see [Hardcastle et al. 2007](#); [Heckman & Best 2014](#); [Smolčić et al. 2017a](#); [Padovani et al. 2017](#)): the radiatively efficient population and the radiatively inefficient population, the main difference between the two populations being their mode of accretion ([Hardcastle et al. 2007](#); [Heckman & Best 2014](#); [Narayan et al. 1998](#); [Shakura & Sunyaev 1973](#)). The radiatively efficient population, fueled by the cold intergalactic medium, exhibits higher Eddington ratios and evolves faster. In the literature they correspond to HERGs, while in our study they correspond to the high-luminosity end. The radiatively inefficient population, fueled by the hot intergalactic medium, evolves less rapidly and radiates at lower Eddington limits. This population corresponds to LERGs, or the low-luminosity end of our sample.

In summary, the results presented within this work are consistent with both the earlier findings from the literature and the currently accepted physical interpretation of these findings.

7. Summary and conclusion

We presented a study of AGN using the radio data from the GMRT radio telescope in the XXL-North field, and the corresponding multi-wavelength data (see Sect. 2.2), we were able to obtain a large sample of sources with photometric redshifts. A very careful cross-matching using the likelihood ratio method resulted in a catalog of 1150 sources, whose radio emission is dominated by AGN processes, covering a rather large area of the luminosity–redshift plot ($z \leq 2.1$, $S_{610\text{MHz}} > 1\text{ mJy}$). We constructed the radio luminosity functions at 1.4 GHz using the standard V_{Max} method and examined their evolution and how it changes for low-luminosity and high-luminosity populations. The luminosity functions are in agreement with a double-population model from Willott et al. (2001), supporting bimodal evolution found across the literature. The advantage of this survey was that we could simultaneously reach redshifts of up to $z \approx 2.1$ and luminosities up to $\log(L_{1.4\text{GHz}}[\text{W Hz}^{-1}]) \approx 28$, owing to the large area and depth of the observed field.

Acknowledgements. VS, MN, LC, KT acknowledge the European Union's Seventh Framework programme under Grant agreement 337595 (CoSMass). BS and VS acknowledge the financial support by the Croatian Science Foundation for project IP-2018-01-2889 (LowFreqCRO). XXL is an international project based around an XMM Very Large Programme surveying two 25 deg^2 extragalactic fields at a depth of $\sim 6 \times 10^{-15}\text{ erg cm}^{-2}\text{ s}^{-1}$ in the $[0.5\text{--}2]\text{ keV}$ band for point-like sources. The XXL website is <http://irfu.cea.fr/xxl>. Multi-band information and spectroscopic follow-up of the X-ray sources are obtained through a number of survey programs, summarized at <http://xxlmultiwave.pbworks.com/>. The Saclay group acknowledges long-term support from the Centre National d'Etudes Spatiales (CNES).

References

Adami, C., Giles, P., Koulouridis, E., et al. 2018, *A&A*, **620**, A5
 Avni, Y., & Bahcall, J. N. 1980, *ApJ*, **235**, 694
 Becker, R. H., White, R. L., & Helfand, D. J. 1995, *ApJ*, **450**, 559
 Beifiori, A., Courteau, S., Corsini, E. M., & Zhu, Y. 2012, *MNRAS*, **419**, 2497
 Best, P. N., & Heckman, T. M. 2012, *MNRAS*, **421**, 1569
 Bondi, M., Ciliegi, P., Zamorani, G., et al. 2003, *A&A*, **403**, 857
 Bonzini, M., Mainieri, V., Padovani, P., et al. 2012, *ApJS*, **203**, 15
 Boyle, B. J., Shanks, T., & Peterson, B. A. 1988, *MNRAS*, **235**, 935
 Brusa, M., Zamorani, G., Comastri, A., et al. 2007, *ApJS*, **172**, 353
 Butler, A., Huynh, M., Delhaize, J., et al. 2018a, *A&A*, **620**, A3
 Butler, A., Huynh, M., Delvecchio, I., et al. 2018b, *A&A*, **620**, A16 (XXL Survey, XVIII)
 Butler, A., Huynh, M., Kapińska, A., et al. 2019, *A&A*, **625**, A111 (XXL Survey, XXXI)
 Cannon, R., Drinkwater, M., Edge, A., et al. 2006, *MNRAS*, **372**, 425
 Cattaneo, A., Faber, S. M., Binney, J., et al. 2009, *Nature*, **460**, 213
 Ciliegi, P., Zamorani, G., Hasinger, G., et al. 2003, *A&A*, **398**, 901
 Ciliegi, P., Jurlin, N., Butler, A., et al. 2018, *A&A*, **620**, A11 (XXL Survey, XXVI)
 Clarke, D. A., Harris, D. E., & Carilli, C. L. 1997, *MNRAS*, **284**, 981
 Clewley, L., & Jarvis, M. J. 2004, *MNRAS*, **352**, 909
 Collister, A., Lahav, O., Blake, C., et al. 2007, *MNRAS*, **375**, 68
 Condon, J. J., Cotton, W. D., Greisen, E. W., et al. 1998, *AJ*, **115**, 1693
 Croton, D. J., Stevens, A. R. H., Tonini, C., et al. 2016, *ApJS*, **222**, 22
 de Ruiter, H. R., Willis, A. G., & Arp, H. C. 1977, *A&AS*, **28**, 211
 Delvecchio, I., Smolčić, V., Zamorani, G., et al. 2017, *A&A*, **602**, A3
 Donoso, E., Best, P. N., & Kauffmann, G. 2009, *MNRAS*, **392**, 617
 Dunlop, J. S., & Peacock, J. A. 1990, *MNRAS*, **247**, 19
 Fabian, A. C. 2012, *ARA&A*, **50**, 455
 Fadda, D., Marleau, F. R., Storrie-Lombardi, L. J., et al. 2006, *AJ*, **131**, 2859
 Felten, J. E. 1976, *ApJ*, **207**, 700
 Ferrarese, L., & Merritt, D. 2000, *ApJ*, **539**, L9
 Feruglio, C., Maiolino, R., Piconcelli, E., et al. 2010, *A&A*, **518**, L155
 Fleuren, S., Sutherland, W., Dunne, L., et al. 2012, *MNRAS*, **423**, 2407

Fotopoulou, S., & Paltani, S. 2018, *A&A*, **619**, A14
 Fotopoulou, S., Pacaud, F., Paltani, S., et al. 2016, *A&A*, **592**, A5 (XXL Survey, VI)
 Franceschini, A., Rodighiero, G., Cassata, P., et al. 2006, *A&A*, **453**, 397
 Furlanetto, C., Dye, S., Bourne, N., et al. 2018, *MNRAS*, **476**, 961
 Gebhardt, K., Bender, R., Bower, G., et al. 2000, *ApJ*, **539**, L13
 Gehrels, N. 1986, *ApJ*, **303**, 336
 Graham, A. W., Onken, C. A., Athanassoula, E., & Combes, F. 2011, *MNRAS*, **412**, 2211
 Hardcastle, M. J., Evans, D. A., & Croston, J. H. 2007, *MNRAS*, **376**, 1849
 Harrison, C. M., Costa, T., Tadhunter, C. N., et al. 2018, *Nat. Astron.*, **2**, 198
 Heckman, T. M., & Best, P. N. 2014, *ARA&A*, **52**, 589
 Horellou, C., Intema, H. T., Smolčić, V., et al. 2018, *A&A*, **620**, A19
 Ilbert, O., Arnouts, S., McCracken, H. J., et al. 2006, *A&A*, **457**, 841
 Intema, H. T., van der Tol, S., Cotton, W. D., et al. 2009, *A&A*, **501**, 1185
 Intema, H. T., Jagannathan, P., Mooley, K. P., & Frail, D. A. 2017, *A&A*, **598**, A78
 Ivison, R. J., Greve, T. R., Dunlop, J. S., et al. 2007, *MNRAS*, **380**, 199
 Jarvis, M. J., Bonfield, D. G., Bruce, V. A., et al. 2013, *MNRAS*, **428**, 1281
 Kim, S., Wardlow, J. L., Cooray, A., et al. 2012, *ApJ*, **756**, 28
 Kolokythas, K., O'Sullivan, E., Giacintucci, S., et al. 2015, *MNRAS*, **450**, 1732
 Laigle, C., McCracken, H. J., Ilbert, O., et al. 2016, *ApJS*, **224**, 24
 Magorrian, J., Tremaine, S., Richstone, D., et al. 1998, *AJ*, **115**, 2285
 Mainieri, V., Kellermann, K. I., Fomalont, E. B., et al. 2008, *ApJS*, **179**, 95
 Marshall, H. L. 1985, *ApJ*, **299**, 109
 McAlpine, K., & Jarvis, M. J. 2011, *MNRAS*, **413**, 1054
 McAlpine, K., Smith, D. J. B., Jarvis, M. J., Bonfield, D. G., & Fleuren, S. 2012, *MNRAS*, **423**, 132
 McAlpine, K., Jarvis, M. J., & Bonfield, D. G. 2013, *MNRAS*, **436**, 1084
 McConnell, N. J., & Ma, C.-P. 2013, *ApJ*, **764**, 184
 McNamara, B. R., & Nulsen, P. E. J. 2007, *ARA&A*, **45**, 117
 Miller, N. A., Bonzini, M., Fomalont, E. B., et al. 2013, *ApJS*, **205**, 13
 Mohan, N., & Rafferty, D. 2015, *Astrophysics Source Code Library* [record ascl:1502.007]
 Naab, T., & Ostriker, J. P. 2017, *ARA&A*, **55**, 59
 Narayan, R., Mahadevan, R., Grindlay, J. E., Popham, R. G., & Gammie, C. 1998, *ApJ*, **492**, 554
 Nawaz, M. A., Wagner, A. Y., Bicknell, G. V., Sutherland, R. S., & McNamara, B. R. 2014, *MNRAS*, **444**, 1600
 Nesvadba, N. P. H., Lehnert, M. D., De Breuck, C., Gilbert, A. M., & van Breugel, W. 2008, *A&A*, **491**, 407
 Netzer, H. 2015, *ARA&A*, **53**, 365
 Novak, M., Smolčić, V., Delhaize, J., et al. 2017, *A&A*, **602**, A5
 Novak, M., Smolčić, V., Schinnerer, E., et al. 2018, *A&A*, **614**, A47
 Padovani, P., Bonzini, M., Kellermann, K. I., et al. 2015, *MNRAS*, **452**, 1263
 Padovani, P., Alexander, D. M., Assef, R. J., et al. 2017, *A&ARv*, **25**, 2
 Page, M. J., & Carrera, F. J. 2000, *MNRAS*, **311**, 433
 Pierre, M., Pacaud, F., Adami, C., et al. 2016, *A&A*, **592**, A1 (XXL Survey, I)
 Pracy, M. B., Ching, J. H. Y., Sadler, E. M., et al. 2016, *MNRAS*, **460**, 2
 Rafferty, D. A., McNamara, B. R., Nulsen, P. E. J., & Wise, M. W. 2006, *ApJ*, **652**, 216
 Rigby, E. E., Best, P. N., Brookes, M. H., et al. 2011, *MNRAS*, **416**, 1900
 Rigby, E. E., Argyle, J., Best, P. N., Rosario, D., & Röttgering, H. J. A. 2015, *A&A*, **581**, A96
 Sadler, E. M., Cannon, R. D., Mauch, T., et al. 2007, *MNRAS*, **381**, 211
 Sani, E., Marconi, A., Hunt, L. K., & Risaliti, G. 2011, *MNRAS*, **413**, 1479
 Schinnerer, E., Carilli, C. L., Scoville, N. Z., et al. 2004, *AJ*, **128**, 1974
 Schinnerer, E., Smolčić, V., Carilli, C. L., et al. 2007, *ApJS*, **172**, 46
 Schinnerer, E., Sargent, M. T., Bondi, M., et al. 2010, *ApJS*, **188**, 384
 Schmidt, M. 1968, *ApJ*, **151**, 393
 Shakura, N. I., & Sunyaev, R. A. 1973, *A&A*, **24**, 337
 Smith, D. J. B., Dunne, L., Maddox, S. J., et al. 2011, *MNRAS*, **416**, 857
 Smolčić, V., Zamorani, G., Schinnerer, E., et al. 2009, *ApJ*, **696**, 24
 Smolčić, V., Novak, M., Bondi, M., et al. 2017a, *A&A*, **602**, A1
 Smolčić, V., Delvecchio, I., Zamorani, G., et al. 2017b, *A&A*, **602**, A2
 Smolčić, V., Novak, M., Delvecchio, I., et al. 2017c, *A&A*, **602**, A6
 Smolčić, V., Intema, H., Šlaus, B., et al. 2018, *A&A*, **620**, A14
 Sutherland, W., & Saunders, W. 1992, *MNRAS*, **259**, 413
 Tasse, C., Cohen, A. S., Röttgering, H. J. A., et al. 2006, *A&A*, **456**, 791
 Tasse, C., Röttgering, H. J. A., Best, P. N., et al. 2007, *A&A*, **471**, 1105
 Tombesi, F., Meléndez, M., Veilleux, S., et al. 2015, *Nature*, **519**, 436
 Urry, C. M., & Padovani, P. 1995, *PASP*, **107**, 803
 Veilleux, S., Meléndez, M., Sturm, E., et al. 2013, *ApJ*, **776**, 27
 Waddington, I., Dunlop, J. S., Peacock, J. A., & Windhorst, R. A. 2001, *MNRAS*, **328**, 882
 Willott, C. J., Rawlings, S., Blundell, K. M., Lacy, M., & Eales, S. A. 2001, *MNRAS*, **322**, 536
 Yuan, Z., & Wang, J. 2013, *Ap&SS*, **345**, 305