

# ANALYSIS OF SELECTIVE LASER MELTING OF RESORBABLE BIOCERAMICS

Pascal Aubry<sup>1</sup>, Olivier Hercher<sup>1</sup>, Didier Nimal<sup>2</sup>,  
David Marchat<sup>3</sup>

<sup>1</sup> CEA/DEN/DANS/DPC/SEARS/LISL, CEA Saclay, 91191 Gif-sur-Yvette Cedex, France

<sup>2</sup> Osseomatrix, 9100 Evry, France

<sup>3</sup> Ecole Nationale Supérieure des Mines de Saint-Etienne, Centre Ingénierie et Santé, UMR CNRS 6638, Saint-Etienne, France

DE LA RECHERCHE À L'INDUSTRIE

cea den



## WHAT COULD BE POSSIBLE IN A NEAR FUTURE...



## DESIGN/MANUFACTURING OF BIOCERAMIC IMPLANT

- Better Osteointegration of the Implant (Compared to Metallic Implants)
- Implant as a Bone-repair-kit : Induction of Natural Bone Regeneration by the Implant



## OrthoFlase Project



Projet ANR-11-TECS-0005:OrthoFlase

SMEs



Web-based software and data management

R&D partners



Powder

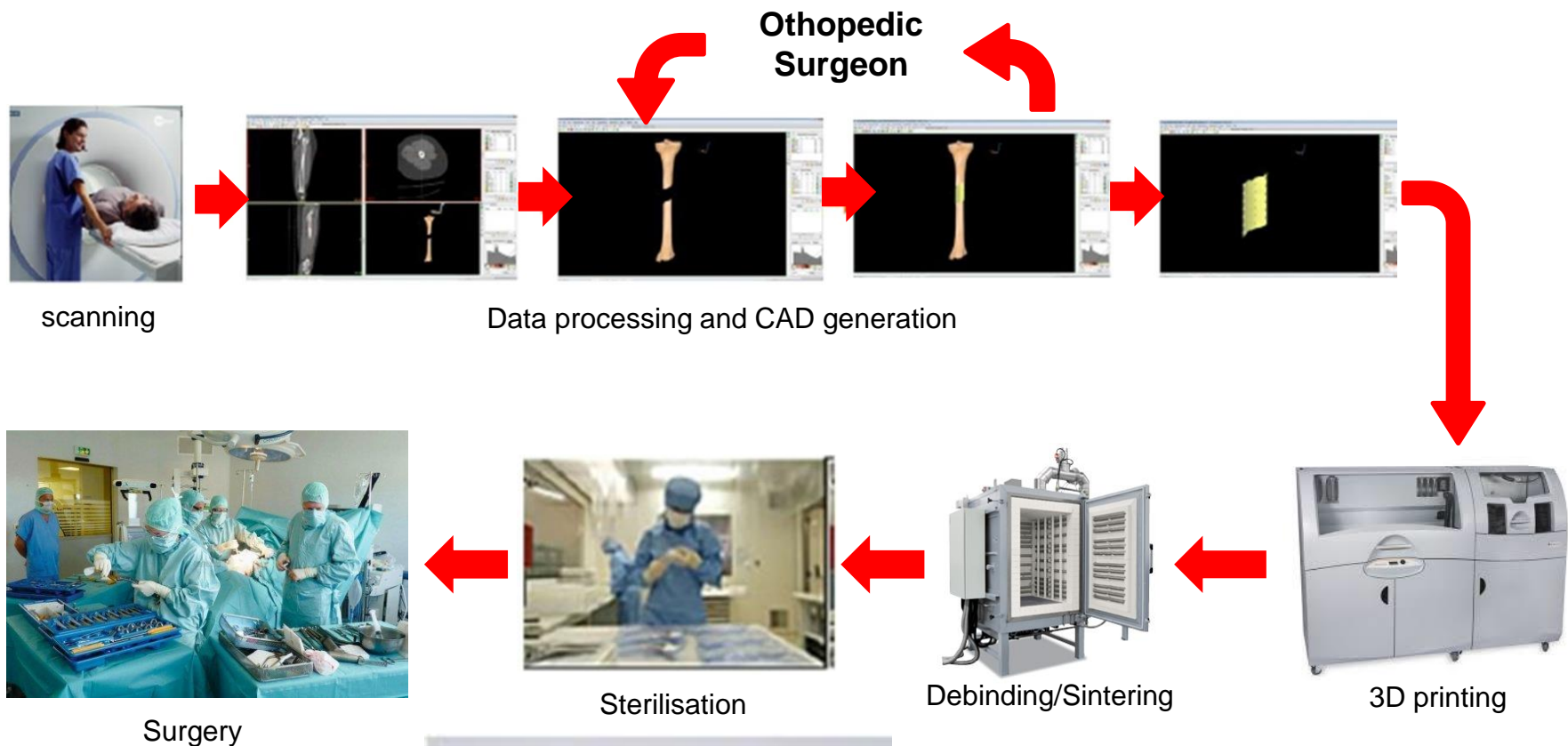


Biocompatibility



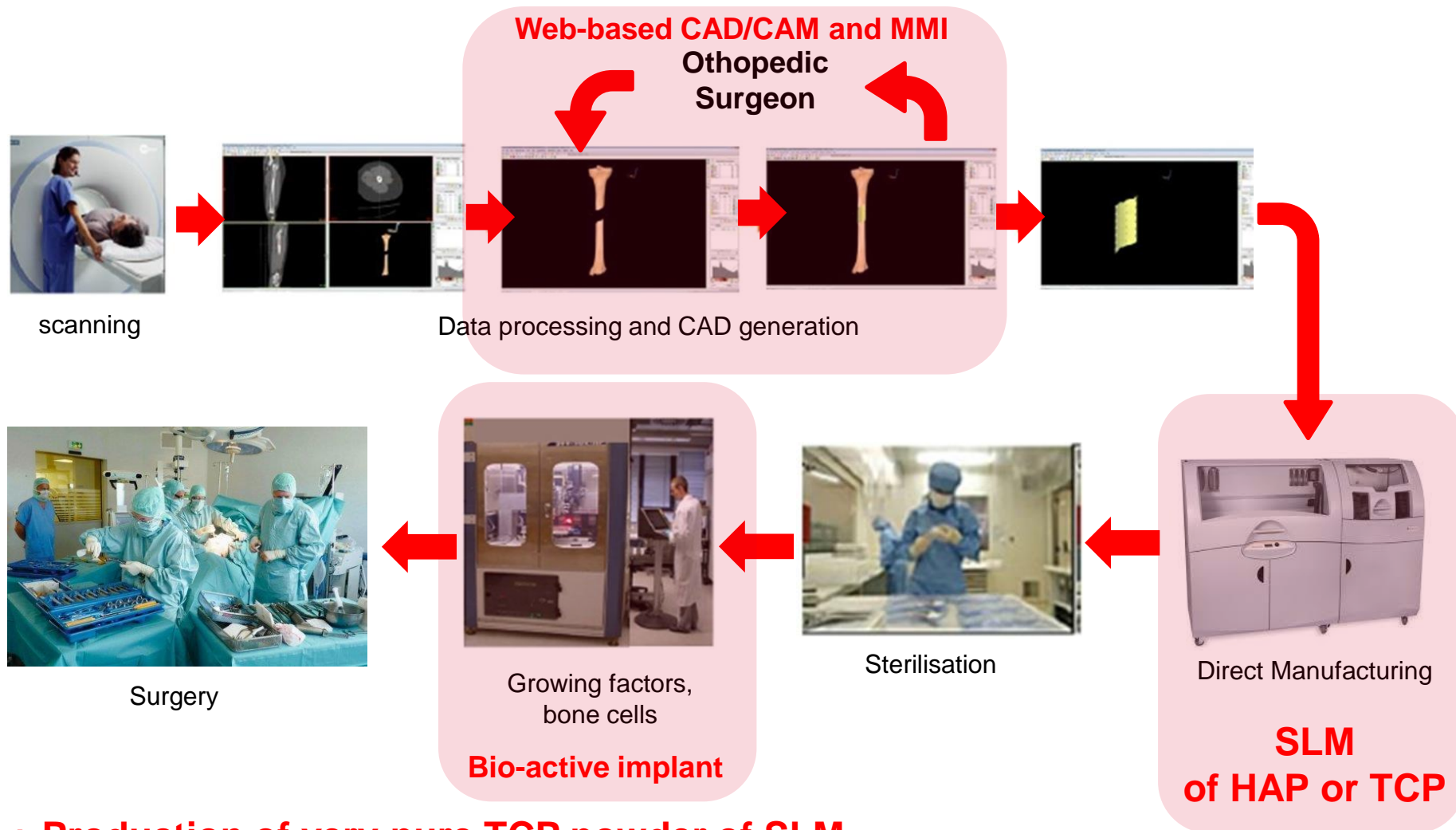
Process development

## STATE-OF-THE-ART/EXISTING TECHNOLOGY



- **HAP (Hydroxyapatite)**
- **TCP Tricalcium Phosphate**

## R&D AND INNOVATIONS PROPOSED

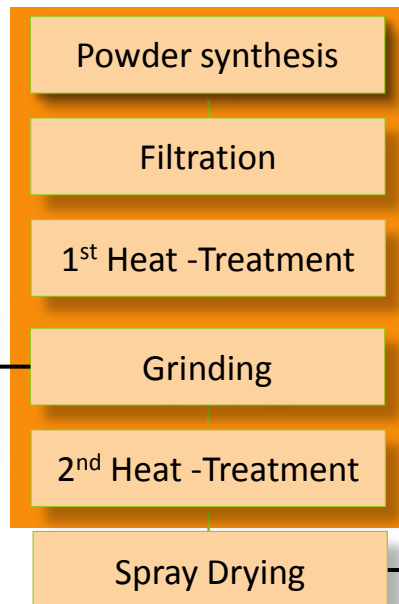
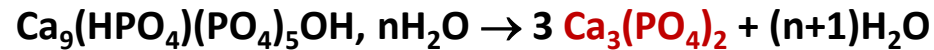
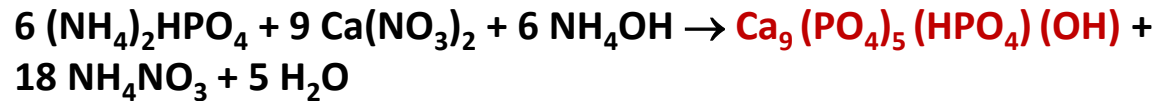
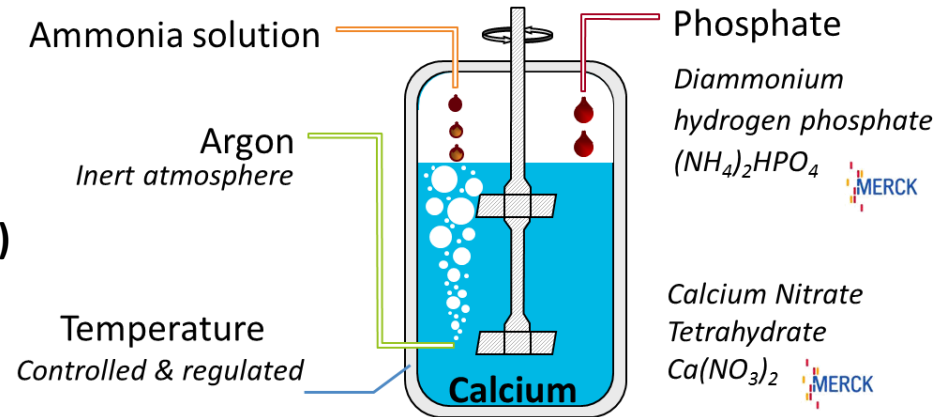


**+ Production of very pure TCP powder of SLM  
(very low content of metallic elements)**

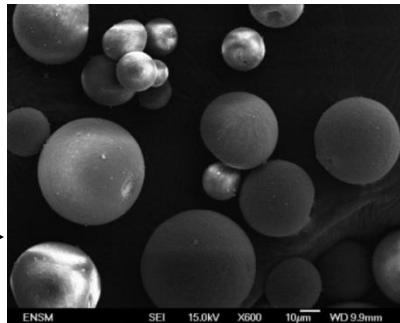
## MANUFACTURING PROCESS OF TRICALCIUM PHOSPHATE B (B-TCP)

- Chemical synthesis of Apatitic Tricalcium Phosphate
- Conversion into TCP
- Synthesis of macro-powder by spraying

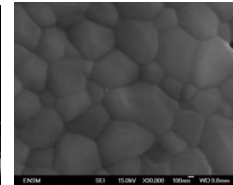
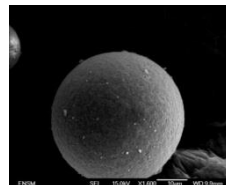
### SYNTHESIS OF APATITIC TRICALCIUM PHOSPHATE (TCP AP) Aqueous precipitation



TCP ap



**β-TCP**

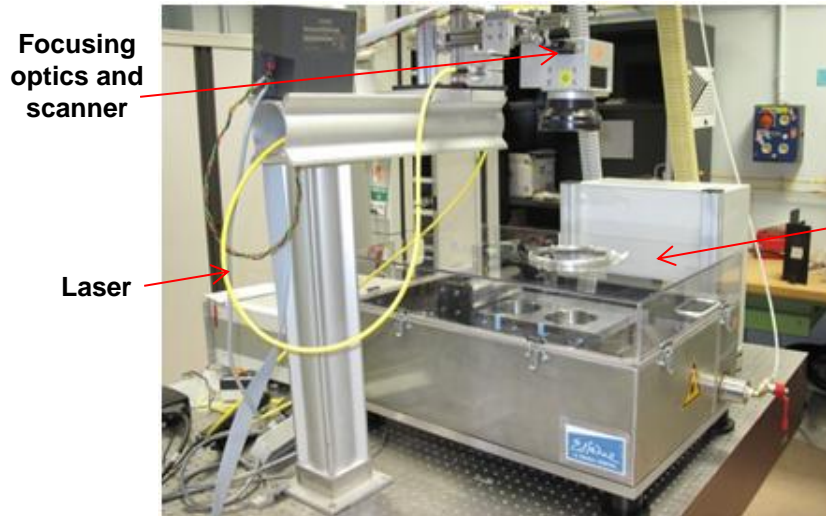


- Ultra pure composition (TCP >99.5% wt., Metals <50ppm)
- Dense and spherical aggregates
- Size distribution:  $1 \leq \phi \leq 50 \mu\text{m}$

## Demonstrator Setup

### SLM demonstrator system

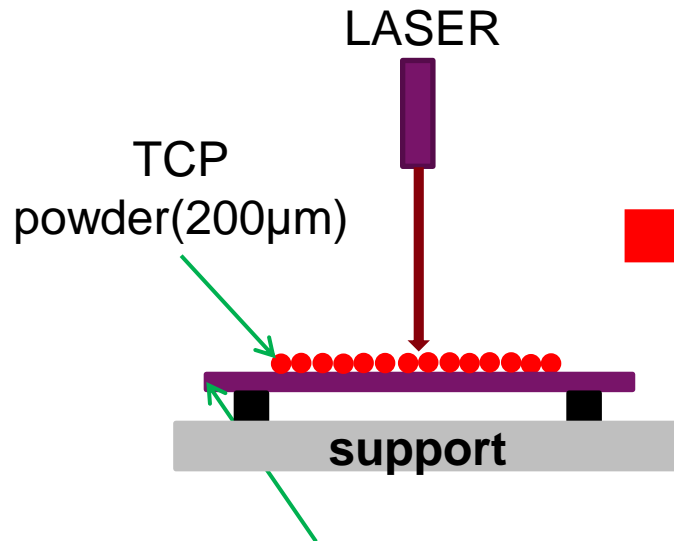
- Laser : CW (100W), CO<sub>2</sub> (50W) (nanoseconde fiber laser, CW Nd:YAG, NIR diode : available)
- Manufacturing Chamber : Ø100mm, stainless steel with HAP



### Process parameter search

- Instrumentation with high speed camera
- Fusion lines
- Main parameters : Power, Scanning speed, Layer thickness, Laser spot diameter,...

## ABSORBITIVITY OF TCP POWDER : STATIC TEST



Transparent material to laser

- 838nm (Thalès laser diode) (spot ~1mm)
  - No absorption at 50W
- 1,064µm (laser Nd:YAG 3kW Lamp pumped) (spot diam ~1,5mm)
  - No absorption up to 750W
- 10,6 µm (CO2 laser 50W max)
  - Fusion at few Watts

✓ Study with CO2 laser possible

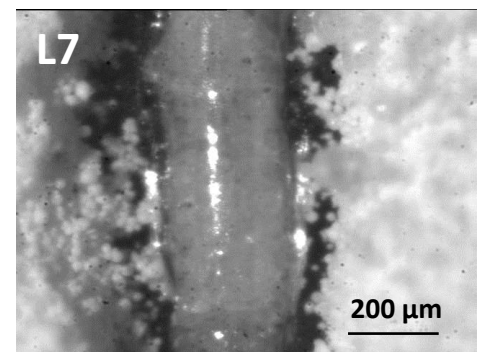
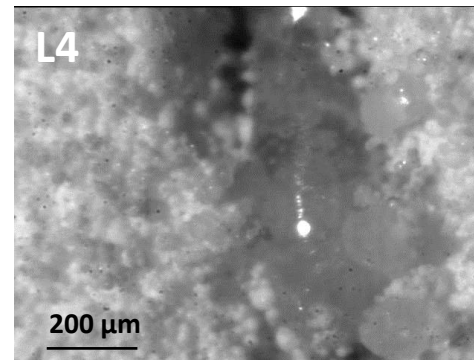
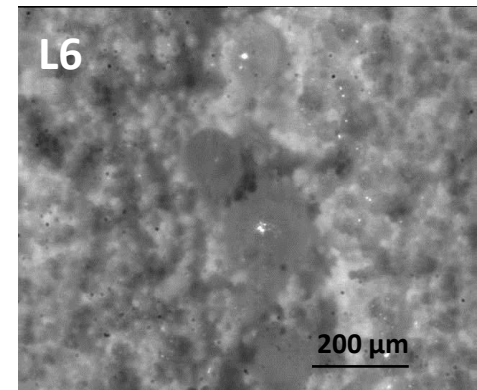
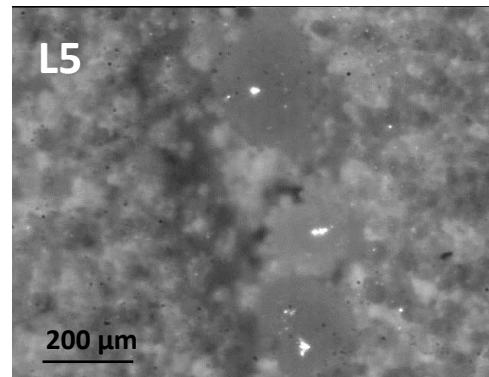
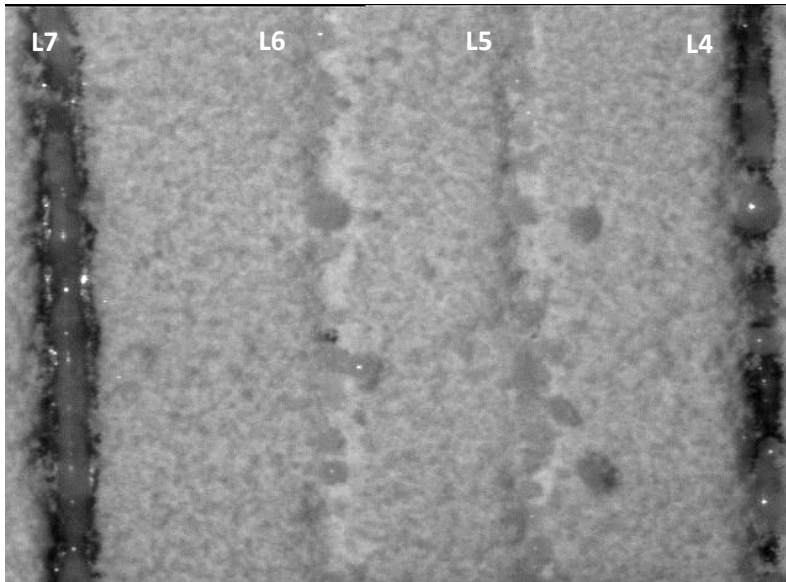
✓ For NIR lasers (1,064µm, 1.07µm, 838nm,...) : need to modify the powder...



## Initial trials

Powder thickness : 200µm  
Support : HAP coating

Trial	Power	Speed		Foacal spot diam.	T° heating
TCP_CO2_C1_L4	52 W	0,1 m/s	6 m/min	200 µm	25°
TCP_CO2_C1_L5	52 W	0,25 m/s	15 m/min	200 µm	25°
TCP_CO2_C1_L6	52 W	0,25 m/s	15 m/min	200 µm	25°
TCP_CO2_C1_L7	52 W	0,05 m/s	3 m/min	200 µm	25°



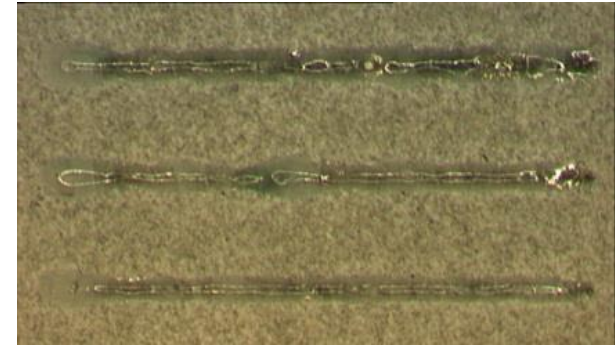
### Results :

- Fusion in droplets for highest speed
- No enough energy density to get stable fusionTCP
- Need to decrease speed

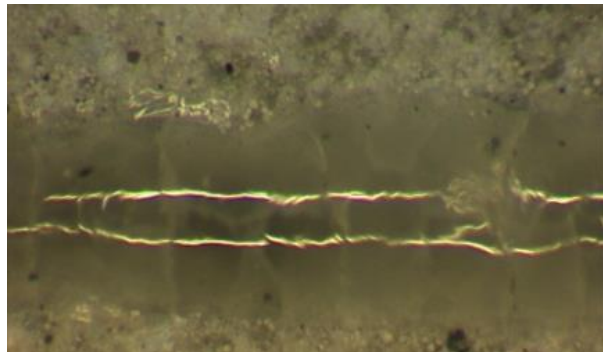
## Reducing travel speed

Trial	Power	Speed	Focal spot diam.	Width
TCP_CO2_C1_L1	52 W	1 m/min	200 μm	~300μm
TCP_CO2_C1_L2	52 W	1.5 m/min	200 μm	~250μm
TCP_CO2_C1_L3	52 W	2 m/min	200 μm	~200μm

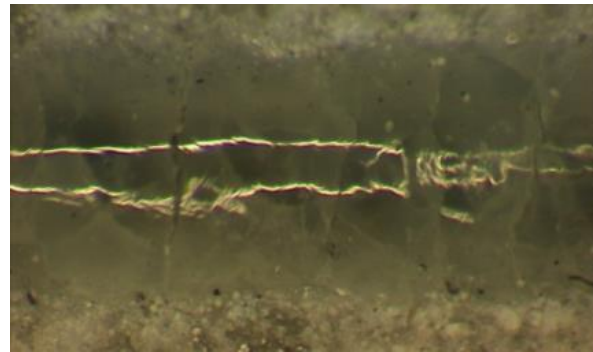
Powder thickness : 200μm  
Support : HAP coating



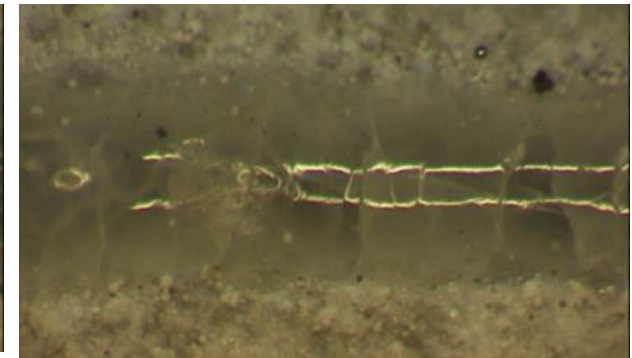
overview



L1 param



L2 param



L1 param

## Results

- Generation of continuous and stable fusion of TCP
- Numerous cracks
- Further process parameter optimization



Heating of manufacturing chamber

Need to decrease powder thickness,  
increase travel speed and laser power...

## ADDITION OF PARTICLES TO TCP POWDER

- Biocompatibility
  - Sub-micro,nano
- } TiC, SiO<sub>2</sub>, SiC ....

## B-TCP+nano SiC

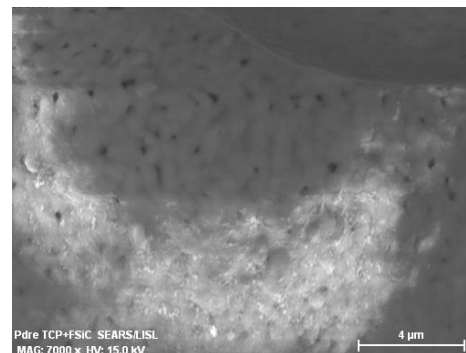
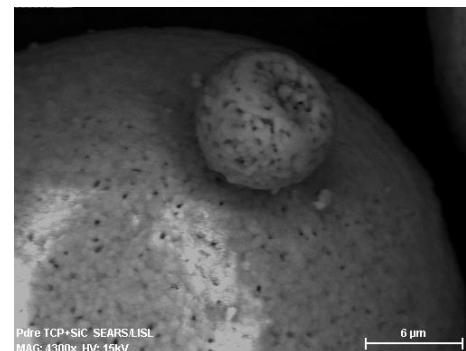
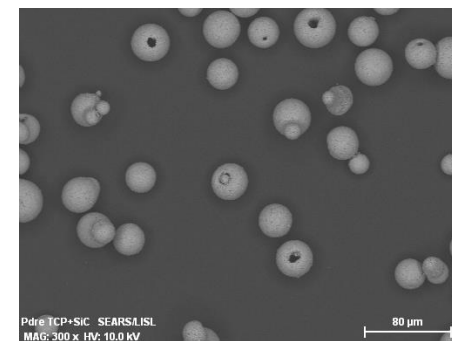
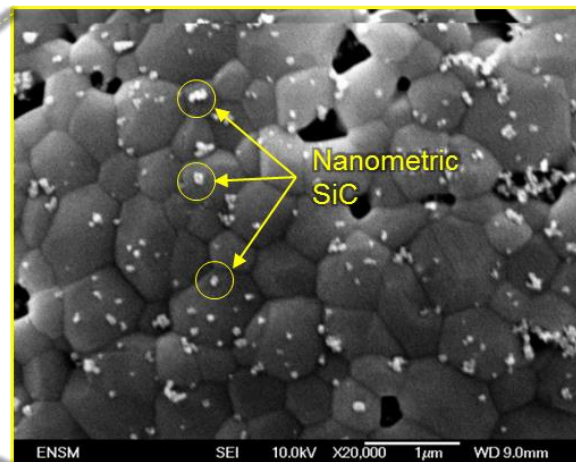
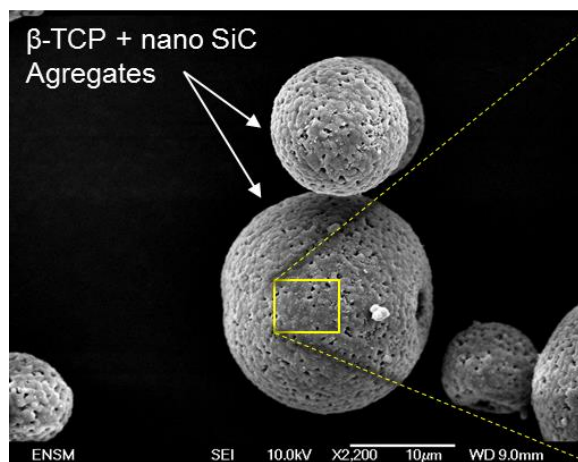
### First method

- Use of  $\beta$  TCP powder
- Mechanical mixing with nano-SiC powder

### Second method

Co-spray drying SiC -  $\beta$  TCP

- Elaboration of dense and spherical aggregates
- Particle size distribution:  $1 \leq \varnothing \leq 50 \mu\text{m}$



Mechanical mixing

Co-spraying

## 1. PARAMETER SEARCH FOR 2D LINE ON SUBSTRATE

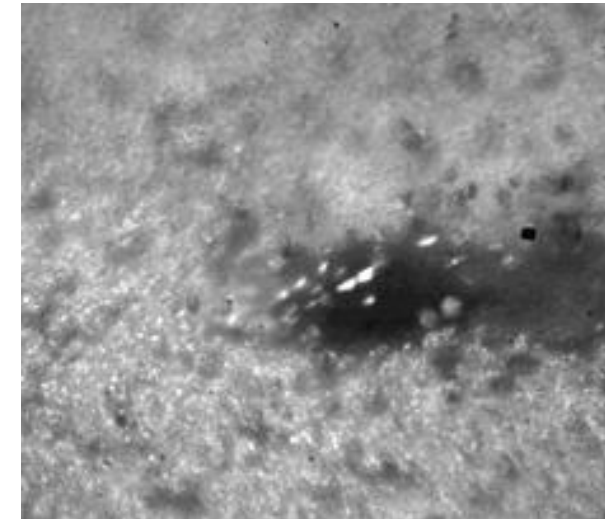
- HAP coating stainless steel plates
- Power : 30-100W
- Focal spot diameter:  $\sim 100\mu\text{m}$
- Scanning speed : 1-200mm/s



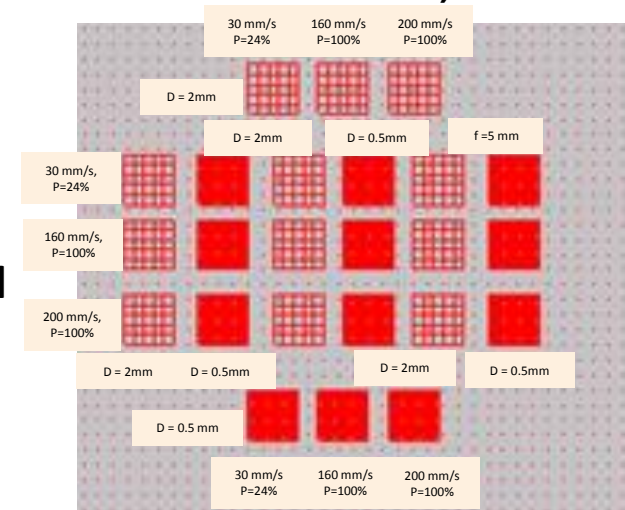
- Selection of best fusion profile (stability)

## 2. PARAMETER SEARCH FOR 2D SURFACE

- Power : 30-100W
- Focal spot diameter:  $\sim 100\mu\text{m}$
- Scanning speed : 100-200mm/s
- Distance between 2D line : 50%-100% of line width and grids






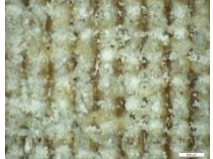




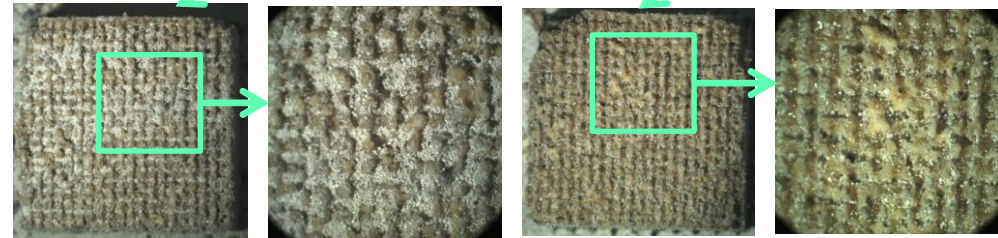
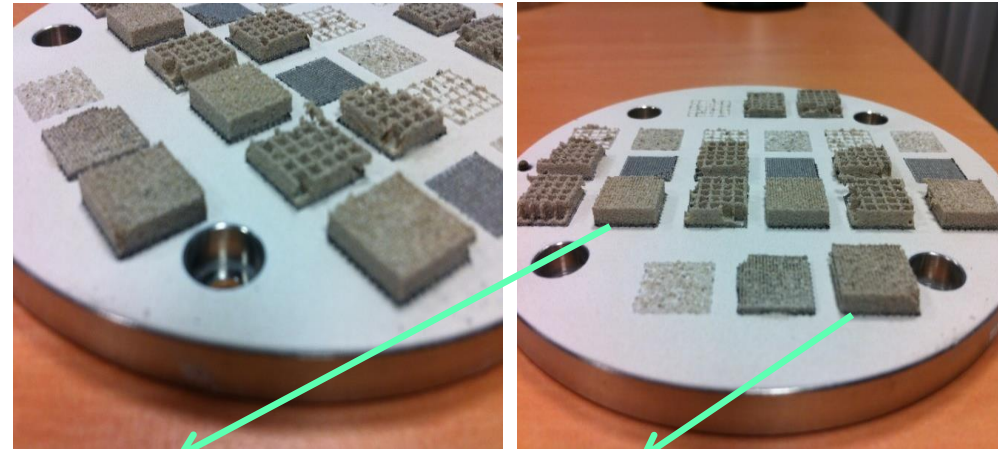
TCP+SiC ( $f=10\text{kHz}$ ,  $P=50\text{W}$ ,  
 $V=100\text{mm/s}$ )



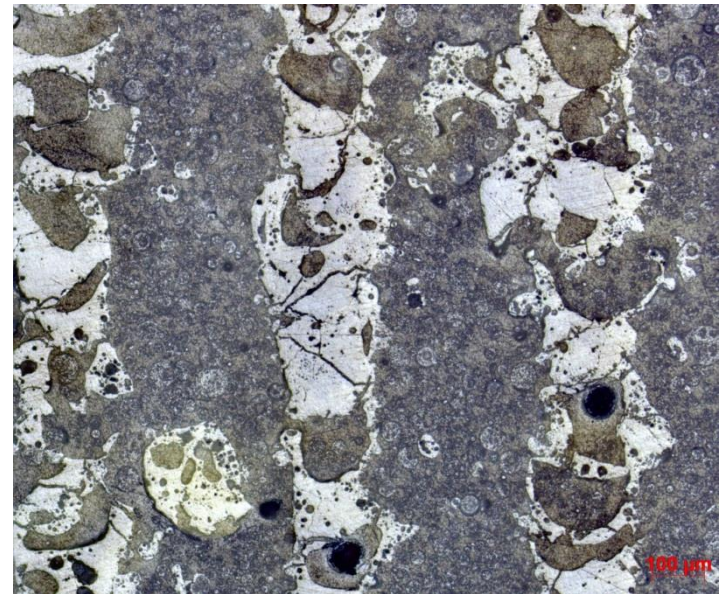
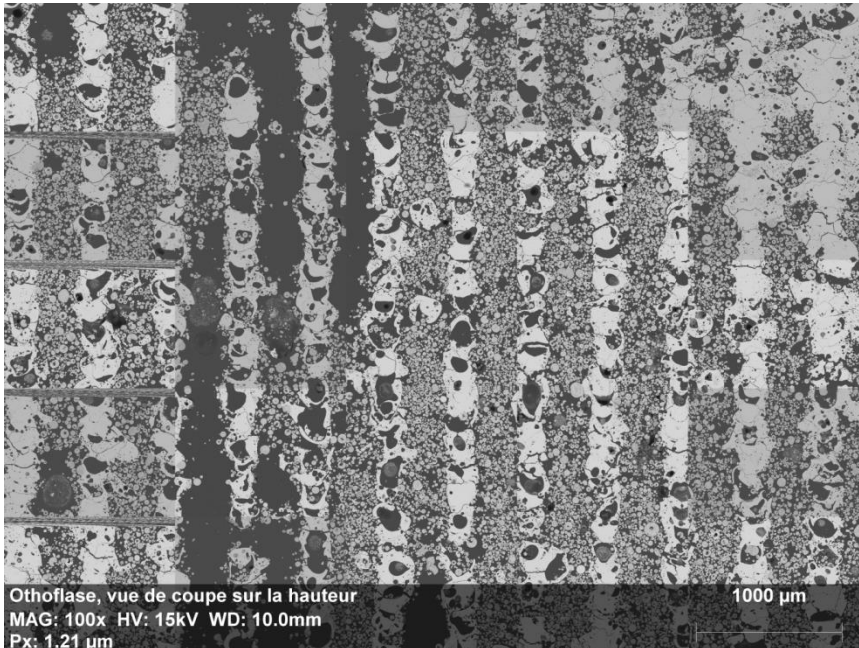
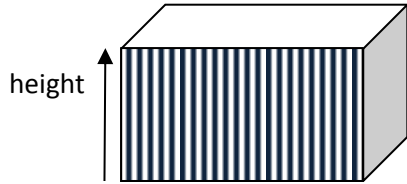
## 3. BUILDING 3D SIMPLE GEOMETRIES

- Squares, cylinders,...
- Focal spot diameter:  $\sim 100\mu\text{m}$
- Scanning speed : 1-200mm/s

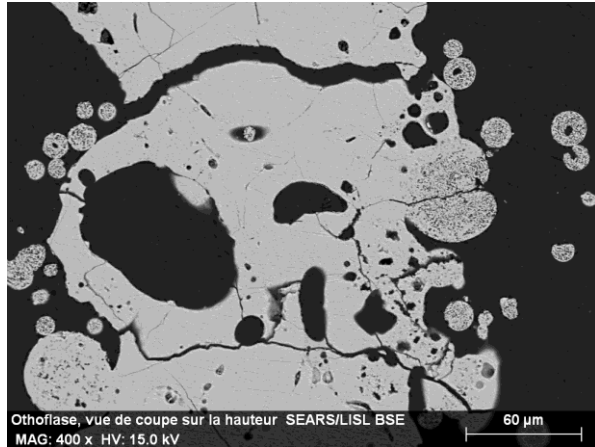
Sample	G1.2	G4
200mm/s – $E_c=0.5\text{mm}$ – carré		
200mm/s – $E_c=0.5\text{mm}$ – cylindre		
200mm/s – $E_c=0.5\text{mm}$ – triangle		
220mm/s – $E_c=0.5\text{mm}$		



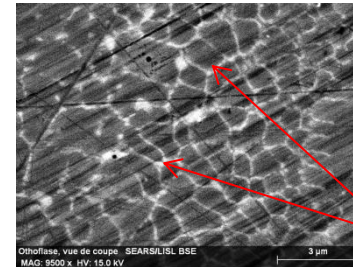
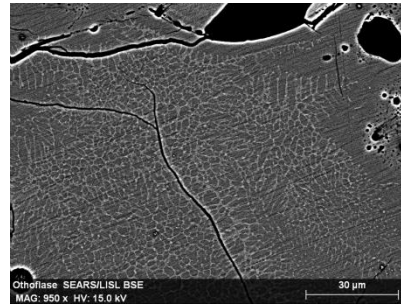
## MATERIAL ANALYSIS



## MATERIAL ANALYSIS

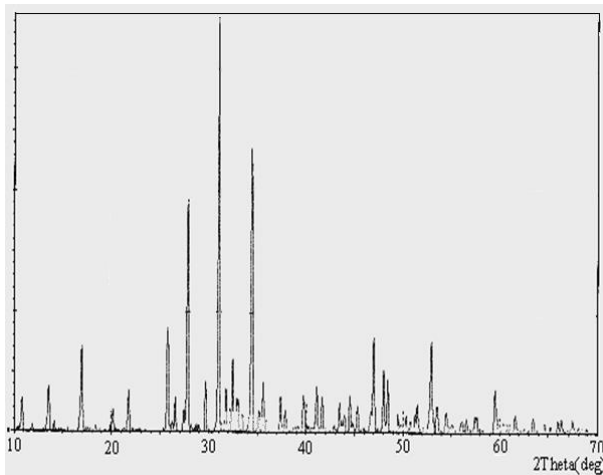


Detail of structure

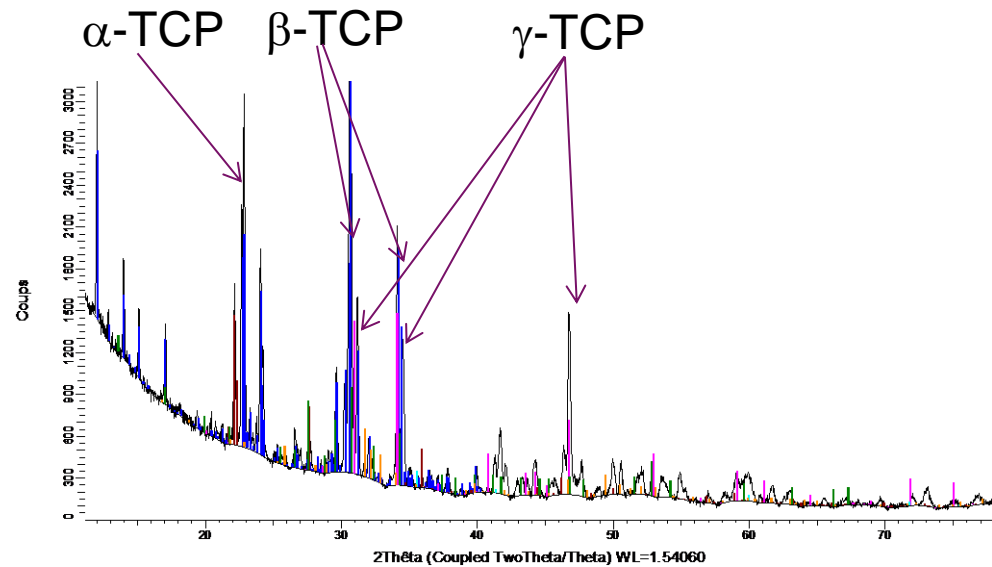


Detail of the microstructure

Rich Ca, O zone



Pure  $\beta$ -TCP XRD spectrum



XRD spectrum

## Process parameter search

1. CO2 laser : Continuation of process parameter search for 3D part manufacturing



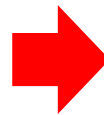
- Decrease powder thickness
- Increase of travel speed
- Decrease of cracks
- Manufacturing of 3D parts

2. Fiber laser



- New additional material
- Optimization of mixture (TCP+add)

3. Material study



- Composition
- Fraction of B-TCP, HAP, TTCP,...

4. Manufacturing complex part

## Biological tests

1. 3D samples

2. Study of porosity of the sample