



The future Jules Horowitz Material Testing Reactor: an opportunity for developing international collaborations on a major European irradiation infrastructure

Daniel Parrat, G. Bignan, B. Maugard, C. Gonnier, C. Blandin

► To cite this version:

Daniel Parrat, G. Bignan, B. Maugard, C. Gonnier, C. Blandin. The future Jules Horowitz Material Testing Reactor: an opportunity for developing international collaborations on a major European irradiation infrastructure. 11th International Conference on WWER Fuel Performance, Modelling and Experimental Support, INRNE - Institute for Nuclear Research and Nuclear Energy of the Bulgarian Academy of Sciences; IAEA - International Atomic Energy Agency Vienna, Austria, Sep 2015, Varna, Bulgaria. cea-02509653

HAL Id: cea-02509653

<https://cea.hal.science/cea-02509653>

Submitted on 17 Mar 2020

HAL is a multi-disciplinary open access archive for the deposit and dissemination of scientific research documents, whether they are published or not. The documents may come from teaching and research institutions in France or abroad, or from public or private research centers.

L'archive ouverte pluridisciplinaire **HAL**, est destinée au dépôt et à la diffusion de documents scientifiques de niveau recherche, publiés ou non, émanant des établissements d'enseignement et de recherche français ou étrangers, des laboratoires publics ou privés.

DE LA RECHERCHE À L'INDUSTRIE

cea den



The future Jules Horowitz Material Testing Reactor (JHR)

An opportunity for developing international collaborations on a major European irradiation infrastructure

D. Parrat¹, G. Bignan², B. Maugard², C. Gonnier², C. Blandin²

¹ CEA, DEN, DEC, Fuel Research Dept.

² CEA, DEN, DER, Reactor Studies Dept.

Nuclear Energy Division (DEN)

CEA Cadarache

daniel.parrat@cea.fr

11th International Conference on
WWER Fuel Performance, Modelling and Experimental Support
26 September – 03 October, 2015, Golden Sands Resort, Varna (BG)

- ❖ Reminder of JHR main features
- ❖ JHR building status
- ❖ JHR operation as an international User Facility
- ❖ Irradiation hosting systems available at the JHR start-up
- ❖ Irradiation hosting systems available
- ❖ Conclusion

WWER Fuel Performance Meeting,
Burgas, Sept. 2011



The Future Jules Horowitz MTR
A Major European Research Infrastructure
for Sustaining
the International Irradiation Capacity

D. Parrat, G. Bignan, J.P. Chauvin, C. Gonnier

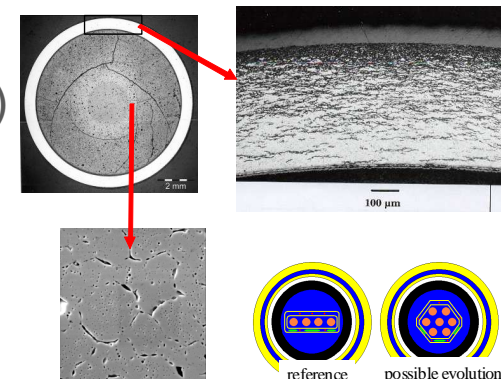
CEA, Nuclear Energy Division
CEA Cadarache

daniel.parrat@cea.fr

1 / 25 9th Int. Conference on WWER Fuel Performance, Modelling and Experimental Support, Helena Resort (BG), September 17-23, 2011

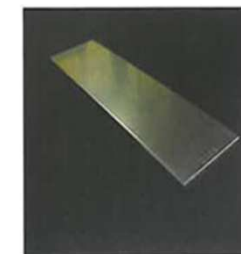
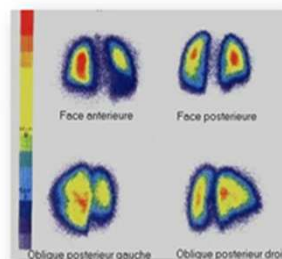
1. R&D in support to nuclear Industry

- Safety and Plant life time management (ageing & new plants)
- Fuel behavior validation in incidental and accidental situation
- Assess innovations and related safety for future NPPs



2. Radio-isotopes supply for medical application

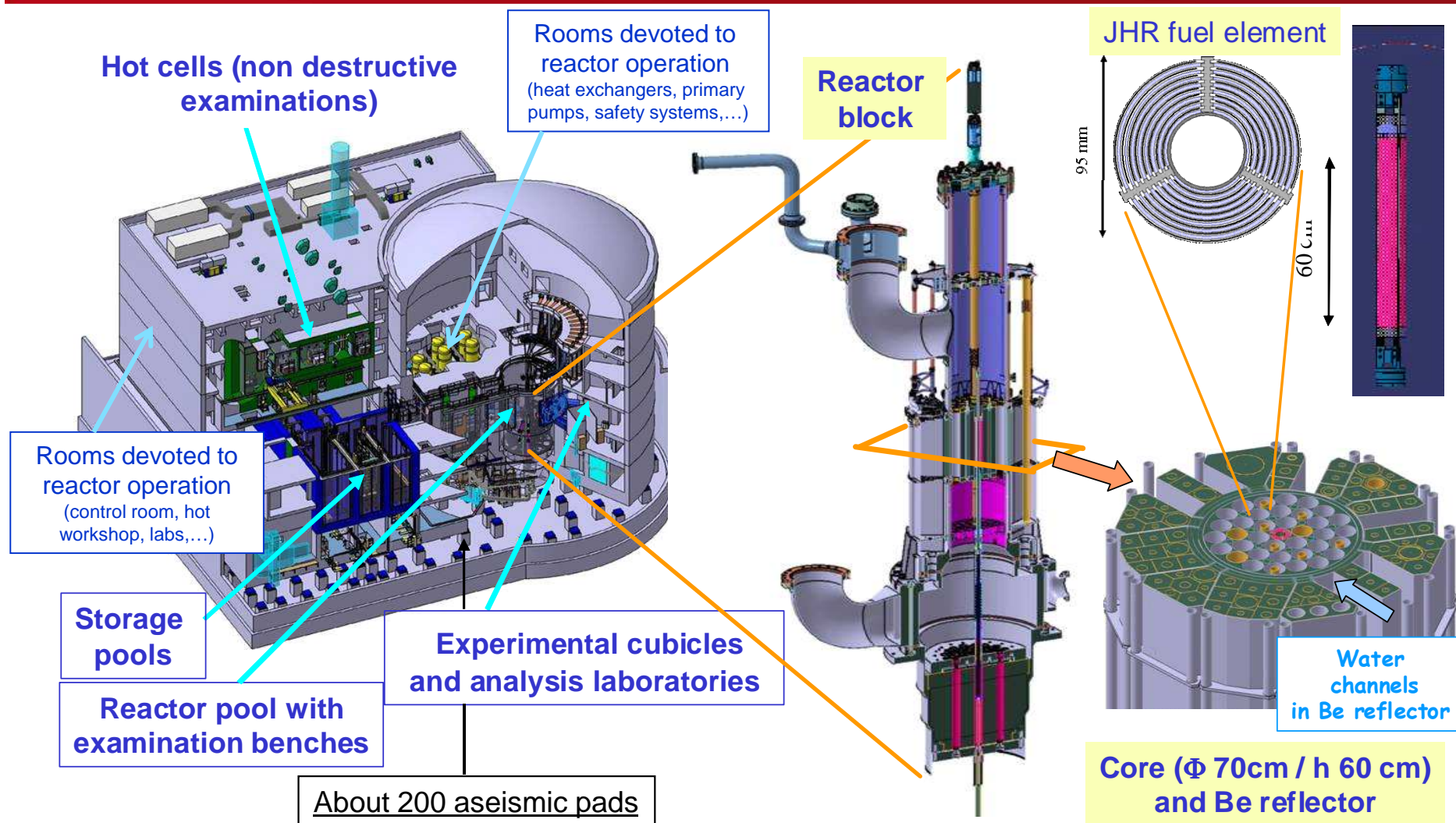
- ^{99}Mo production
 - JHR will supply 25% of the European demand (today about 8 millions protocols/year)
 - Up to 50% upon specific request



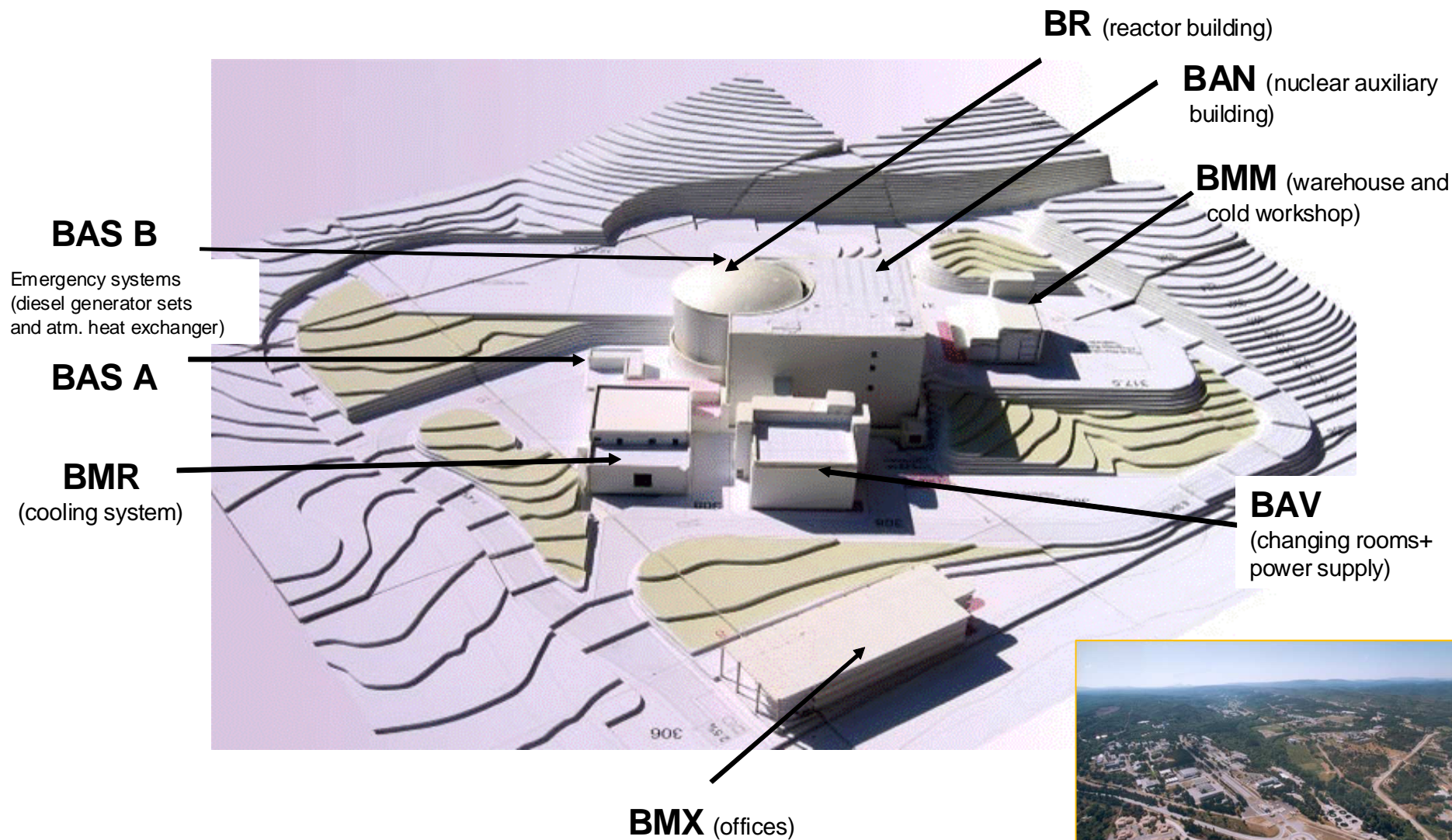
3. A key tool to support expertise

- Training new generations (JHR simulator, secondees program)
- Maintaining a national expertise staff and credibility for public acceptance
- **Assessing safety requirements evolution and international regulation harmonization**

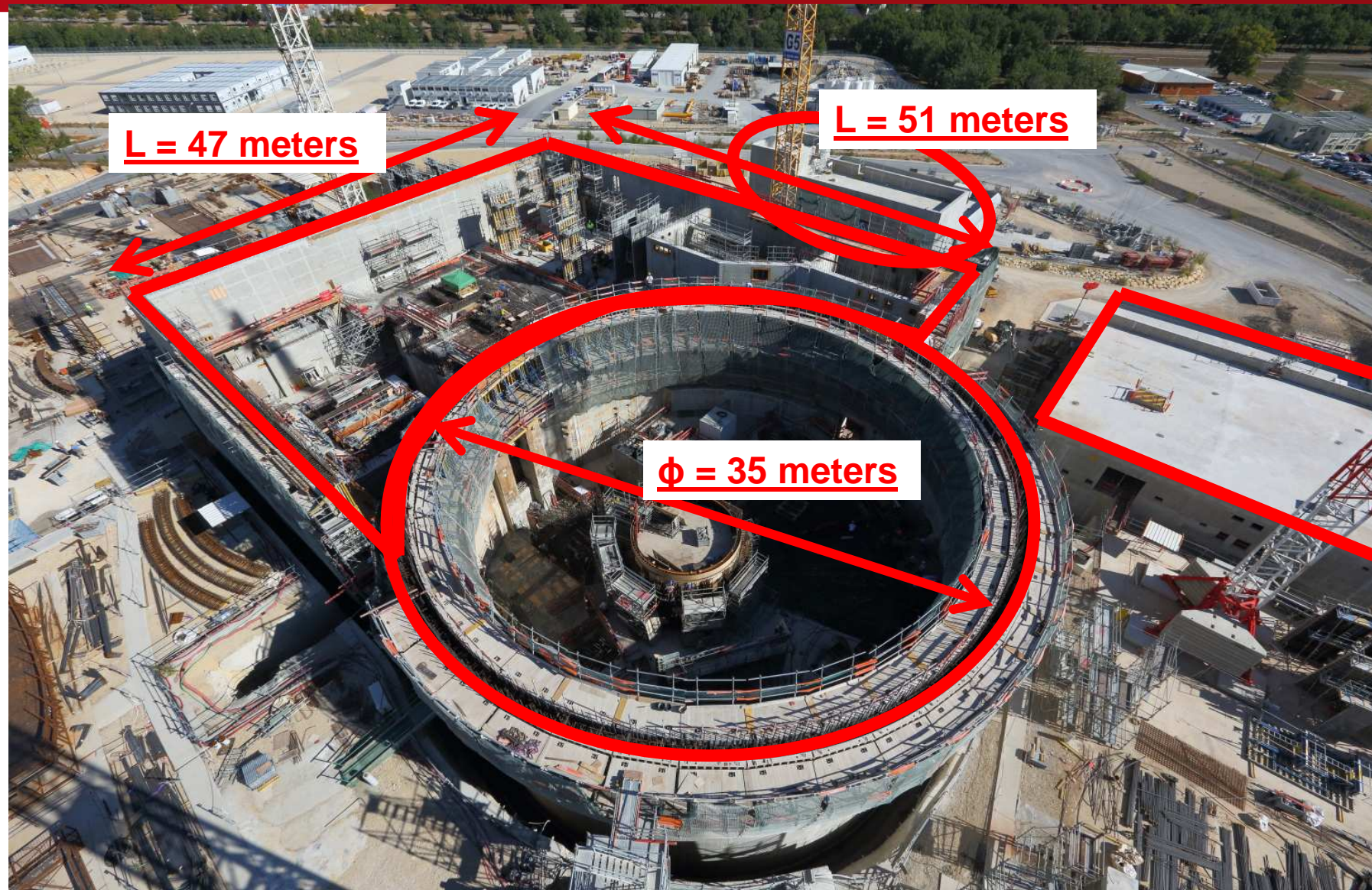




**Core Designed for UMo-Al fuel (70 MWth / 100 MWth)
Start-up with U_3Si_2 -Al fuel**



CEA Cadarache



POURING OF THE REACTOR BUILDING DOME (7-8 JANUARY 2015)

Duration: about 20 hours, with an average rate of $36 \text{ m}^3 / \text{h}$, up to 730 m^3 of self-compacting concrete

Pouring a dome of a nuclear reactor made in a single operation and using a self-compacting concrete : first time in Europe

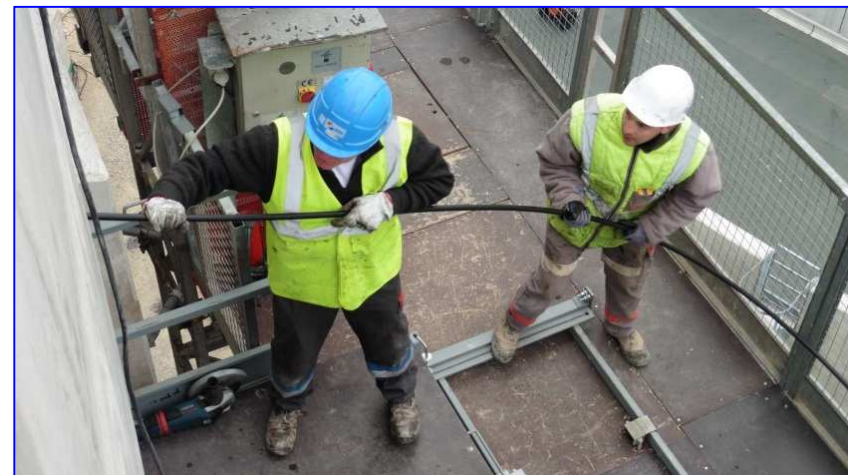




Implementation of
presstressing cables



Presstressing cables

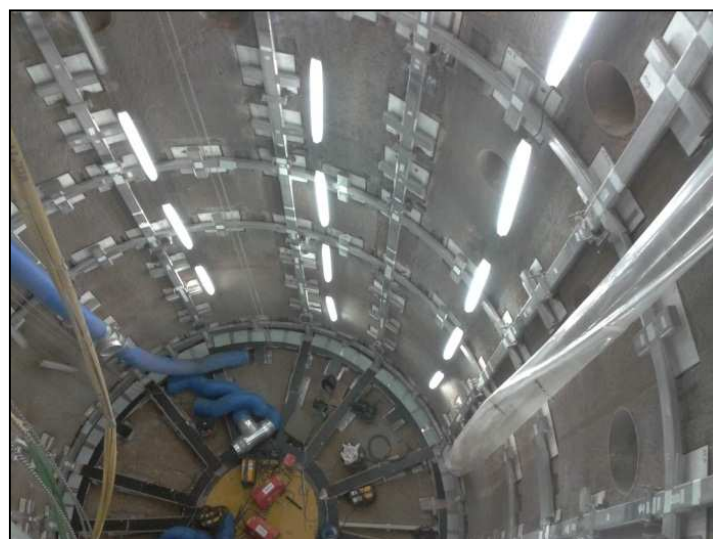




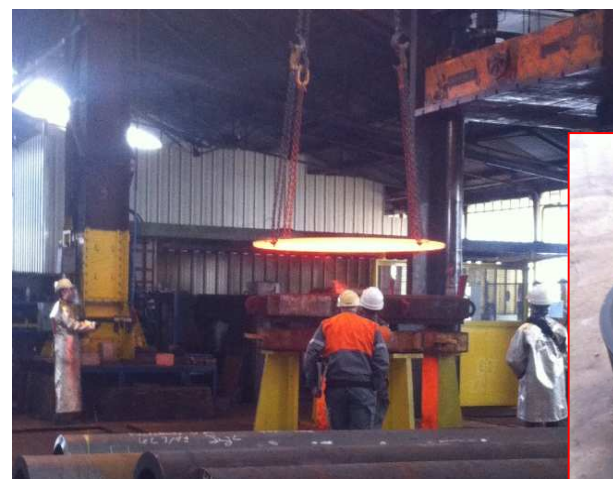
Hot cells
modules
(End 2014)



Reactor block
components
(Spring 2015)

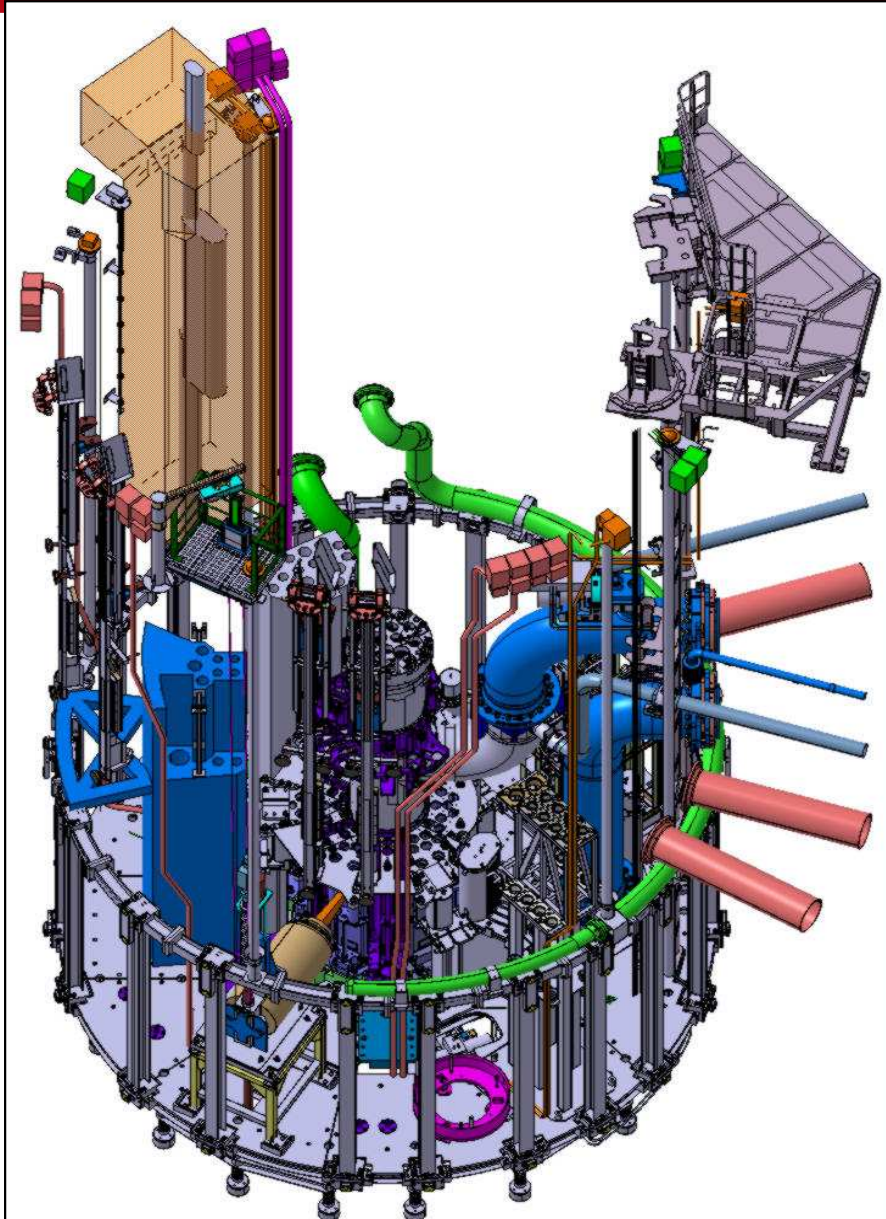


RER pool base welding
(October - November 2014)



Heat Exchanger in-factory forging:
Bottom part (November 2014)



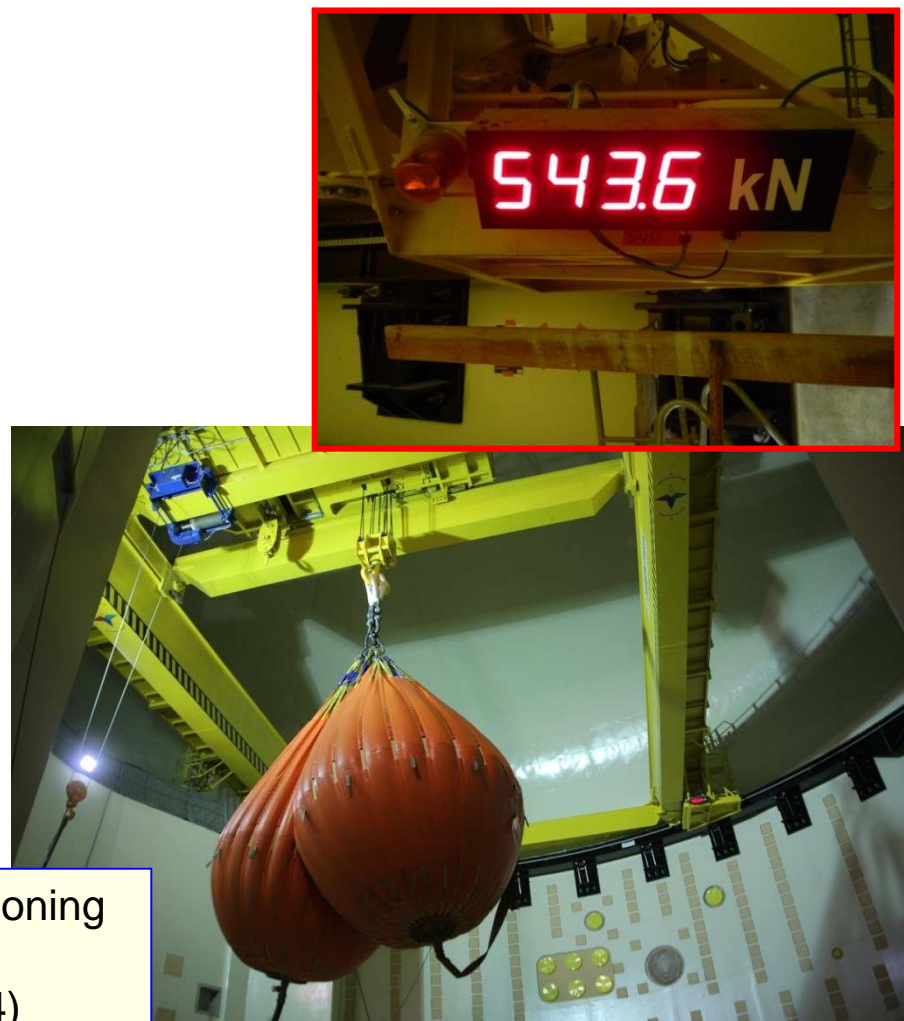


**REALIZATION
PHASE STARTING**

Important milestone !



In-factory tests for
emergency diesel generators
(End 2014)



Polar crane commissioning
tests at full load
(November 2014)

- Fuel qualification completed (in BR2)
- Civil work completed by mid-2016
- First criticality : second semester of 2019
- Full operation planned by the end of 2020

- ❖ Reminder of JHR general characteristics
- ❖ JHR building status
- ❖ JHR operation as an international User's Facility**
- ❖ Irradiation hosting systems available at the JHR start-up
- ❖ Irradiation hosting systems available after the JHR start-up
- ❖ Conclusion



19/03/2007 Signature of the JHR Consortium

JHR Consortium gathers organizations which take part financially in the construction of JHR (1 representative / organization)

JHR Consortium current partnership: Research centers & Industrial companies

Studsvik

VATTENFALL



AREVA



Ciemat
Centro de Investigaciones
Energéticas, Medioambientales
y Tecnológicas

SCK • CEN
STUDIECENTRUM VOOR KERNENERGIE
CENTRE D'ETUDE DE L'ENERGIE NUCLEAIRE



Associated Partnership:



NNL is now the UK representative to JHR
UK/CEA agreement – March 2013

In some cases, the organization (member of the JHR consortium) is itself the representative of a national domestic consortium which gathers organizations among industry, R&D organizations, TSO, or Safety Authority

- CEA = Owner & nuclear operator with all liabilities
- JHR Member : Owner of guaranteed irradiation access rights
 - ⇒ In proportion of his financial commitment to the construction
 - ⇒ With a proportional voting right in the Consortium Board
- A Member can use totally or partly his access rights
 - ⇒ For implementing proprietary programs with full property of results
 - ⇒ And/or for participating to the Joint International Programs open to non-members
 - ⇒ And/or to address issues of common interest with a limited number of members (R&D, NPPs operation...)
- A lively structure !
 - ⇒ Yearly JHR Seminar on experimental capacity
 - ⇒ Working Groups : Fuels, Materials, Technology

To set up the first international programs



Consortium is open to new member entrance until JHR completion

Invigorating international cooperation on Research Reactors : a French Contribution to the recent IAEA initiative “ICERR”

ICERR (International Center based on Research Reactors)



- ▶ Create international scientific networks
- ▶ Make available facilities and experience of mature R&D centres in the field of peaceful uses of Nuclear Energy to affiliates
- ▶ Lead innovative joint programs with shared results
- ▶ Host international scientists / engineers
- ▶ **Provide “hands on” nuclear education “in the field”**

Strong CEA intention to welcome Junior and/or Senior Scientists, Nuclear Engineers, Operators, Safety Managers... within JHR teams for various topics (R&D programs, Hands-on training on equipments...)

LECI : Hot Lab on Materials

- Hands-On Training (Equipments)
- R&D Projects



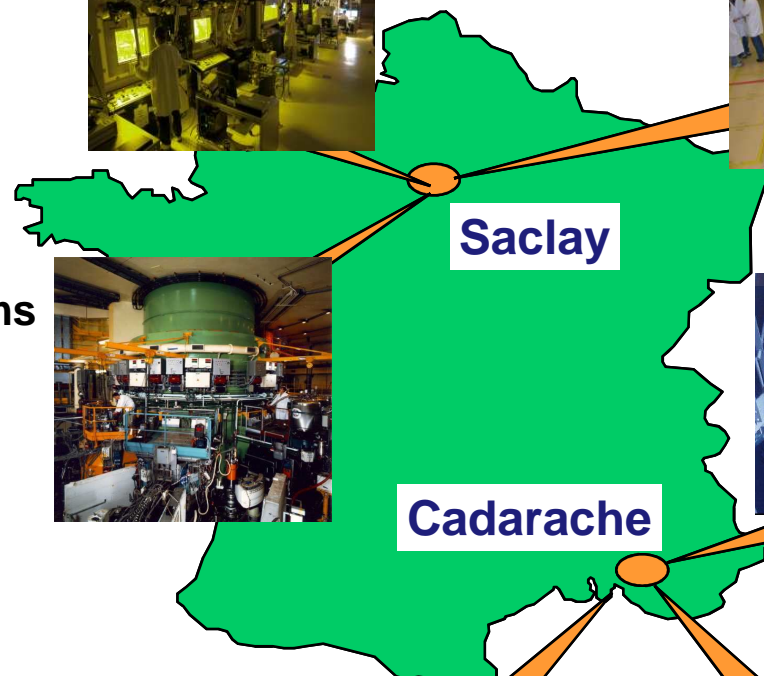
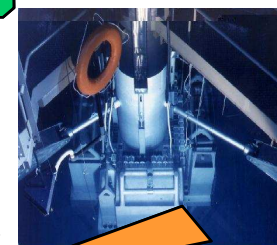
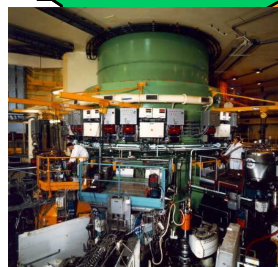
ISIS:

- Education & Training



ORPHEE : Neutron beams

- Hands-On Training (Equipments)
- R&D Projects



Saclay

Cadarache

EOLE/MINERVE:

- Education & Training
- Hands-On Training R&D Projects

JHR : MTR

- Hands-On Training
- R&D Projects

ZEPHYR : LPR



LECA : Hot Lab on Fuel

- R&D Projects
- Hands-On Training (Equipments)



New Projects

- ❖ Reminder of JHR general characteristics
- ❖ JHR building status
- ❖ JHR operation as an international User Facility
- ❖ **Irradiation hosting systems available at the JHR start-up**
- ❖ Irradiation hosting systems available after the JHR start-up
- ❖ Conclusion

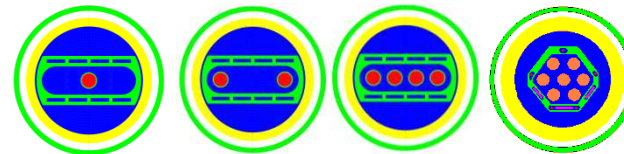
Dedicated to comparative instrumented irradiations (fuel evolution, clad corrosion...) in normal operation of NPPs

=> No clad failure expected in normal operation

Designed with a large flexibility of use

- Adapted thermal-hydraulic conditions
 - ▶ PWR, BWR, **WWER** power systems
- Hosting capacity
 - ▶ High embarking capacity
 - ▶ Highly instrumented experiments
- Coolant chemistry specifications
 - ▶ Nominal chemistry (B, Li, H₂, noble metals...)
 - ▶ Innovative chemistry upon request

Possible rod configurations



Temperature measurement

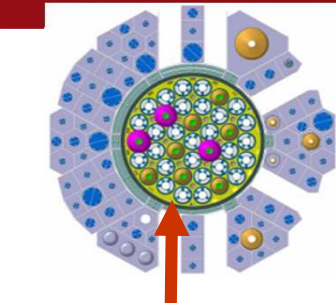
Clad thermocouple

Clad Elongation

Fuel Stack Elongation

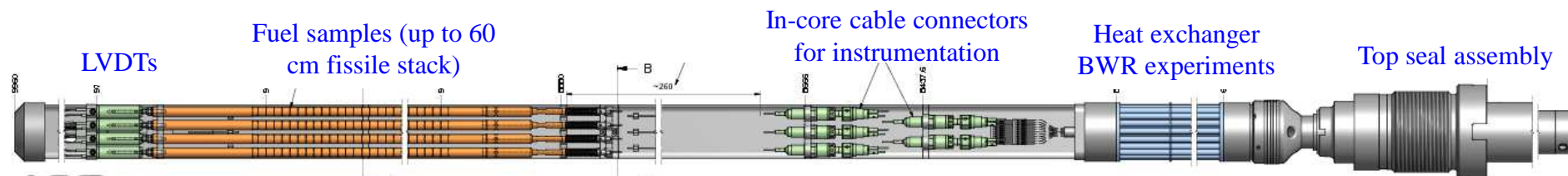
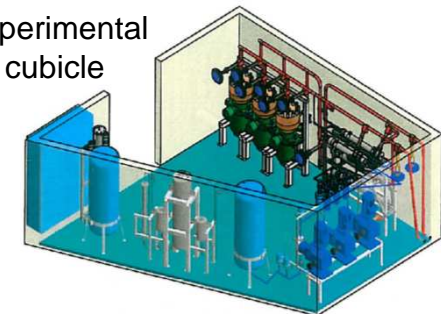
Fuel Plenum Pressure

Neutron flux



In JHR reflector on a displacement system

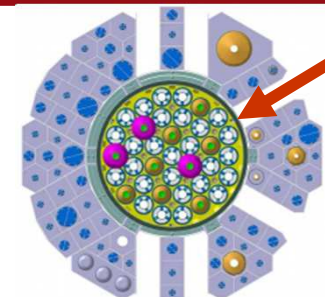
Experimental cubicle



Project Status

- Water loop / I&C systems/ Rig : Detailed Design Phase in progress (IFE, Halden, NO)
- Cubicle : Call for tender mid 2015 (detailed design, manufacturing, assembly on site)
- Pressure flask : Call for tender late 2015

For characterization and qualification of a single LWR fuel rod under off-normal conditions (clad failure = target or a real risk)



In JHR reflector on a displacement system

- Based on the OSIRIS feedback (ISABELLE 1 test device)
- **An In-pile part → 1st Rig designed for POWER RAMP TESTS**

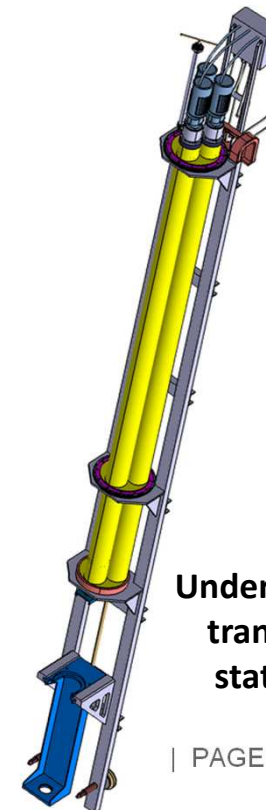
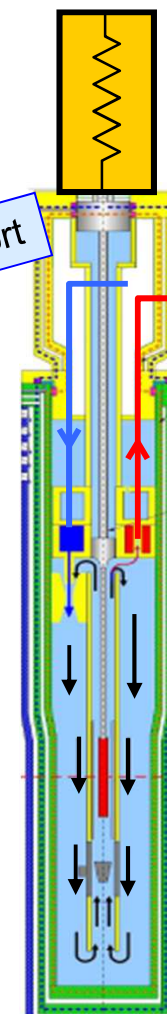
- ▶ Adapted to LWR geometries : PWR, BWR, **WWER**
- ▶ Power ramp with high linear power up to 620 W/cm
- ▶ High power ramp rate up to 700 W/cm.min
- ▶ Quantitative clad elongation measurement (2 LVDT)
- ▶ Quantitative on-line gamma spectrometry system
- ▶ Up to 3 ramps / JHR cycle

With EDF support

In-pile part

Project Status

- Nov. 2014 : Kick-off meeting with the contractor (detailed design, manufacturing, assembly & tests on site of the full test device)
- Dec. 2015 : End of the detailed design phase

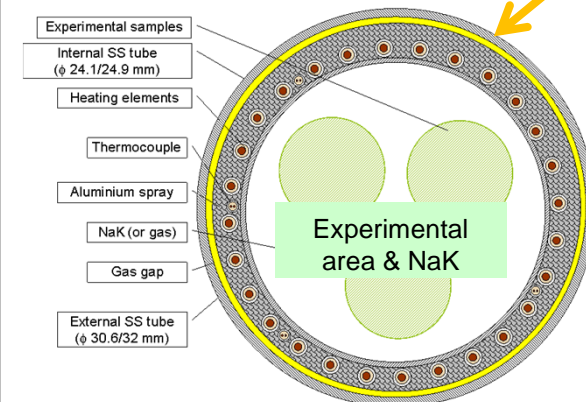


Underwater transfer station

Investigation of physical properties of materials (versus neutron flux, fluency and temperature)

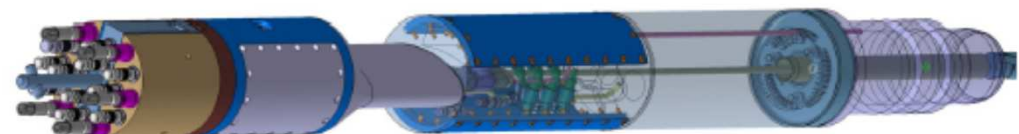
- Static NaK capsule
 - Based on the OSIRIS feedback (CHOUCA test device)
- In core location
 - Dose : up to 16 dpa/y (at 100 MWth)
- Sample temperature control (< 450°C):
 - Gamma heating
 - Gas gap dimension / nature of gas
 - Electric heating elements
- Sample holder (experimental area)
 - Outer diameter: 24 mm
 - Compromise between the number of samples and the quantity of instrumentation (TC, elongation sensor, diameter gauge, loading system...)

In core position
(central hole of a JHR fuel element)



Project Status

- Detailed design phase in progress (CEA)
- Call for tender late 2015 (manufacturing and tests on site)



■ Technical goals

- Study of LWR cladding irradiation creep
- Real time control of the biaxial stress + online measurement of the biaxial creep

■ OSIRIS environment

- Sample holder in a CHOUCAS capsule → Similar to MICA capsule
- 350 °C, static NaK coolant → Similar to MICA capsule

■ Biaxial stress controlled in real time

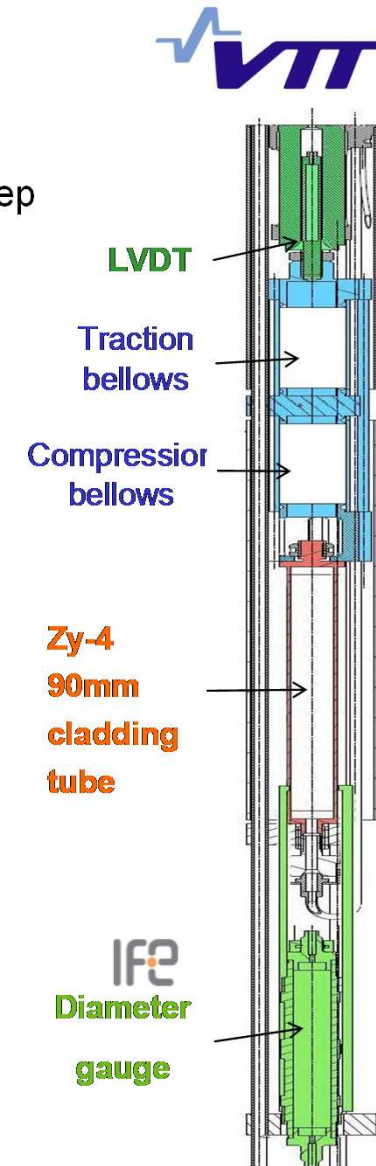
- Specimen pressurization → Max pressure 160 bar
- Push-pull axial loading unit
- Hoop Stress limit: $\sigma_{\theta} = 120$ MPa, Axial stress limit: $\sigma_z = 180$ MPa

■ Online biaxial measurement of creep strain

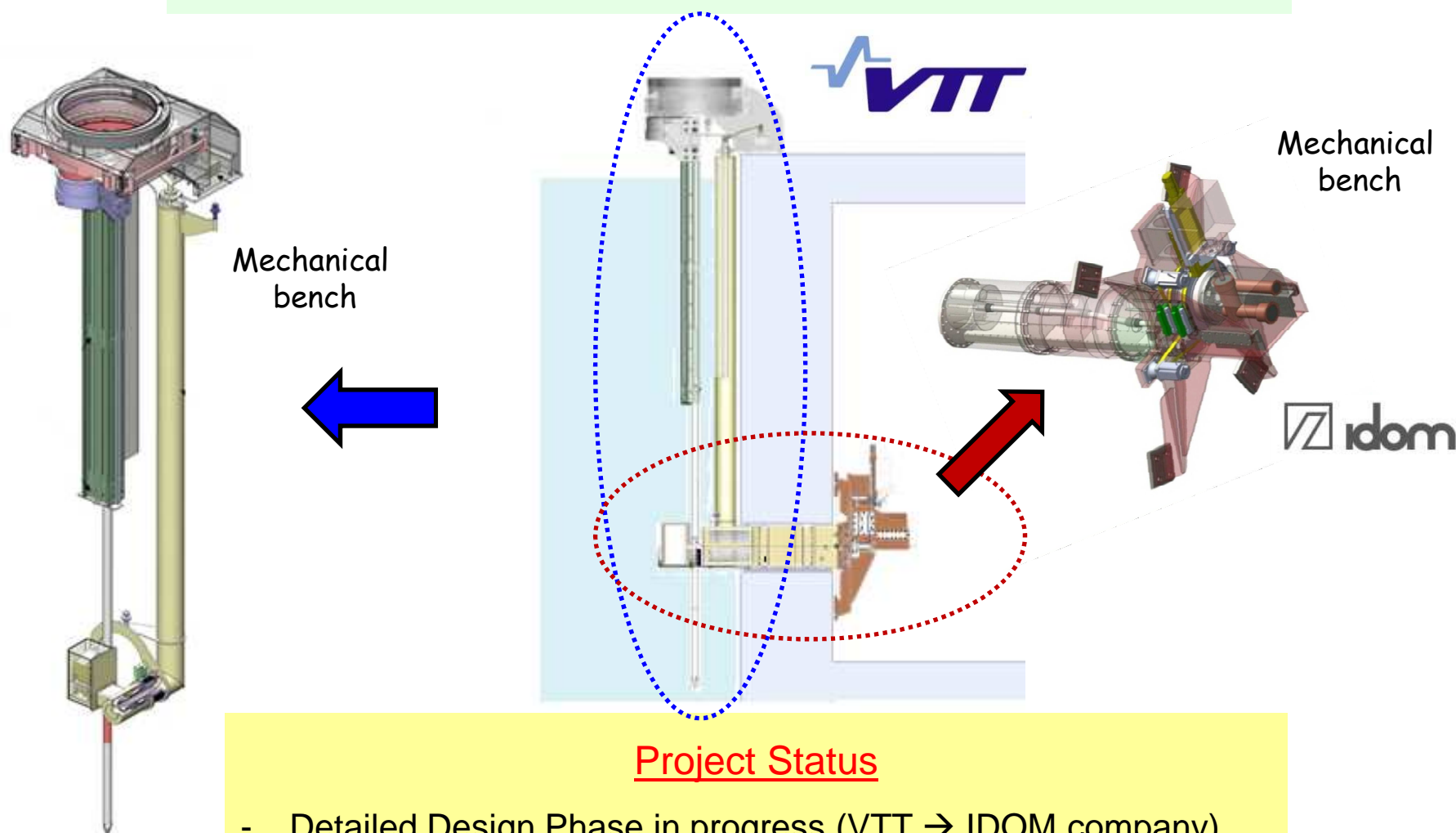
- Continuous measurement of axial strain with a 5-wire LVDT
- Periodical measurement of hoop strain with a diameter gauge (DG)

MELODIE Status

- Last tests of the device & sample holder in progress
- **First irradiation cycle in French MTR Osiris: Early May 2015**



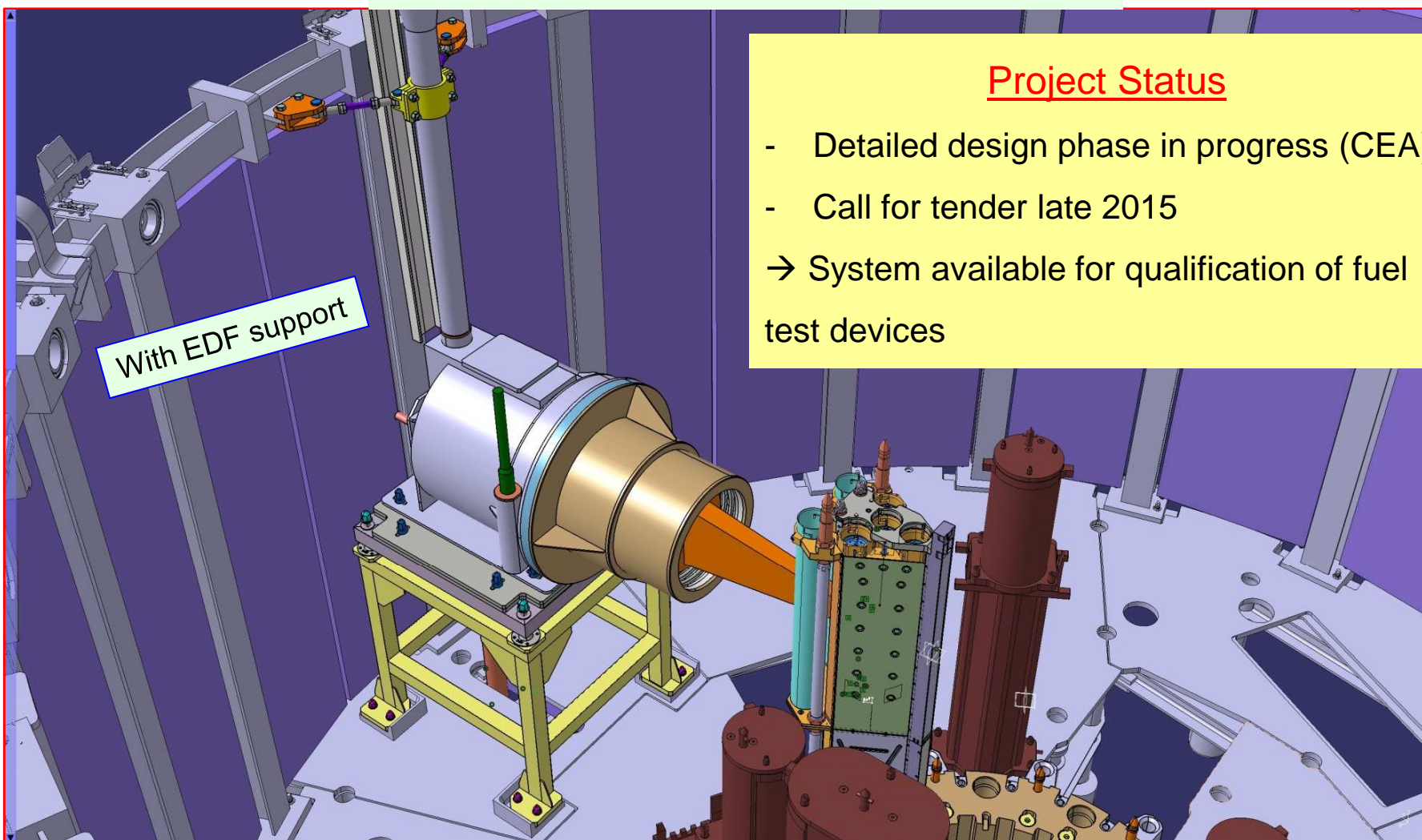
Underwater Gamma and X-Ray bench (UGXR)



Project Status

- Detailed Design Phase in progress (VTT → IDOM company)
- System available for qualification of fuel test devices

Neutron Imaging System (NIS)

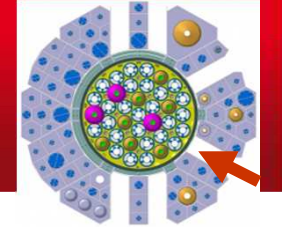


Project Status

- Detailed design phase in progress (CEA)
 - Call for tender late 2015
- System available for qualification of fuel test devices

- ❖ Reminder of JHR general characteristics
- ❖ JHR building status
- ❖ JHR operation as an international user facility
- ❖ Irradiation hosting systems available at the JHR start-up
- ❖ **Irradiation hosting systems available after the JHR start-up**
- ❖ Conclusion

FUEL TESTING IN ACCIDENTAL CONDITIONS: THE LORELEI HOSTING SYSTEM



→ Dedicated to investigation of **LOCA** mechanisms

■ LOCA type sequence on LWR single rod (incl. WWER)

- ▶ Thermal-mechanical behaviour of fuel
- ▶ Fissile stack evolution, fuel fragmentation and release
- ▶ Radiological consequences

■ Integrated water loop capsule (single fuel rod)

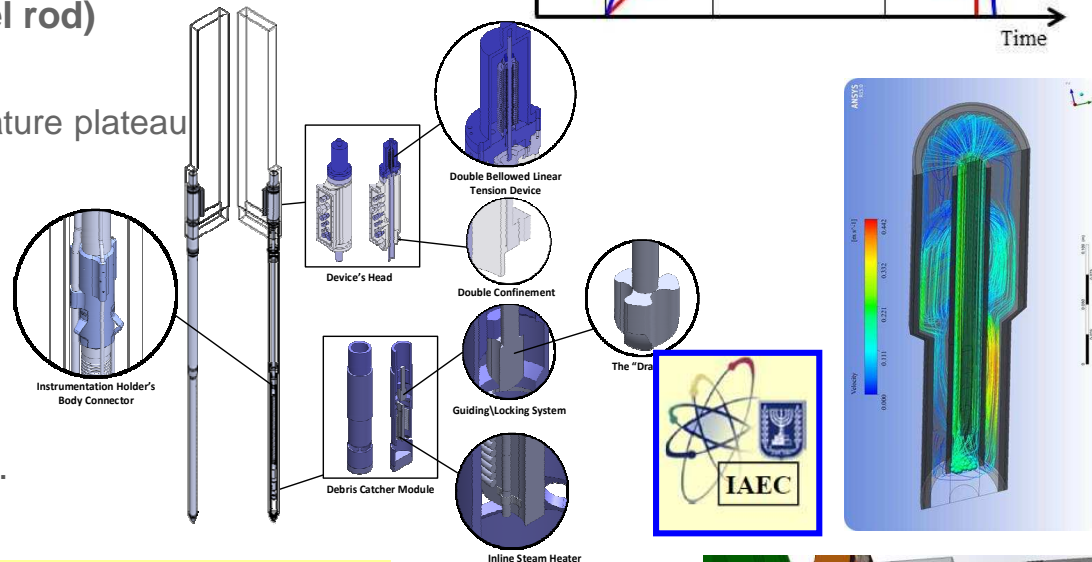
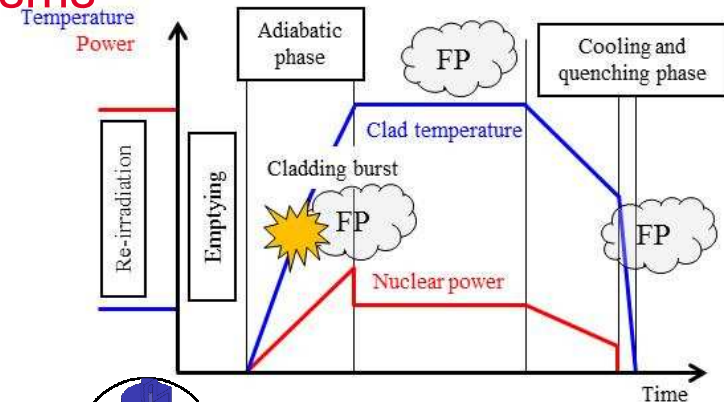
- ▶ Re-irradiation phase
- ▶ Dry out phase (He injection) + High temperature plateau
- ▶ Quenching phase (water injection)

■ Fission Product release analysis

- ▶ Connection to the JHR FP Laboratory

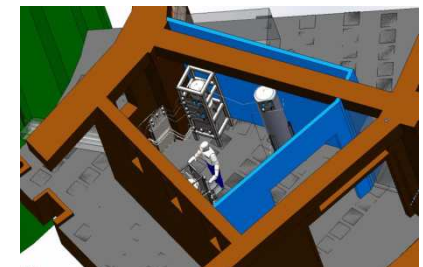
□ On-site examinations

- ▶ X-Ray tomography, Gamma scanning etc.
- ▶ Fuel “as tested” (minimum handling)



Project Status

- Preliminary Design Review in January 2014
- Detailed design in progress (review Early 2016)



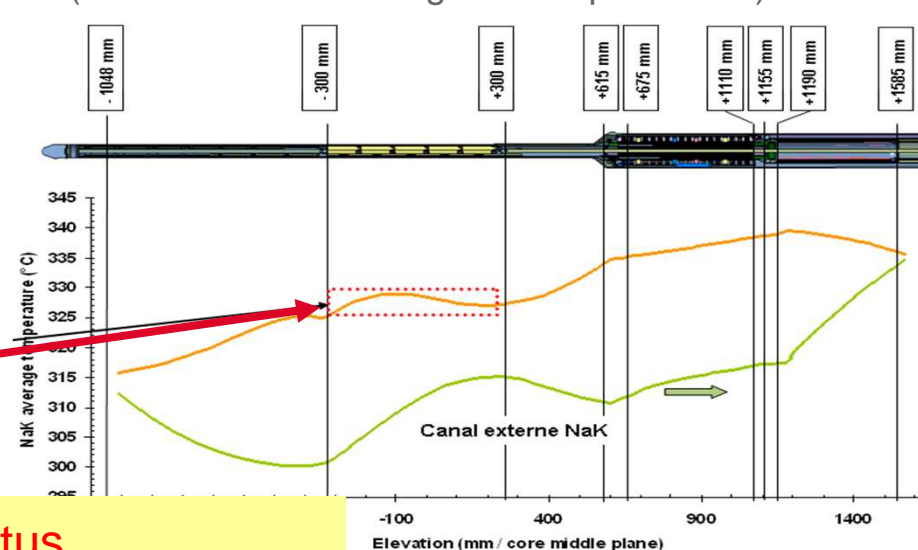
- Thermodynamic loop integrated within the test device
 - Circulating NaK → **NaK flow** (2 m³/h)
 - Heat Exchanger (HE) / Electrical Heater (EH)
 - Innovative electromagnetic pump (L 450 mm, D 80 mm)

Up to 16 dpa/year

- Improvement of the sample temperature control
 - From 250 up to 450°C (setting of HE & EH parameters)
 - Temperature homogeneity between samples**
 - $\Delta\theta < 8^\circ\text{C}$ (Tmax – Tmin all along the samples stack)



In the center of a fuel element



Electrical Heater

Pump (EM)

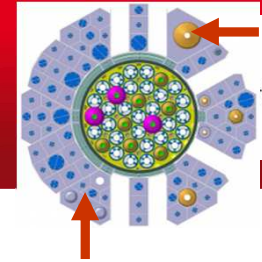
Exchanger

| PAGE

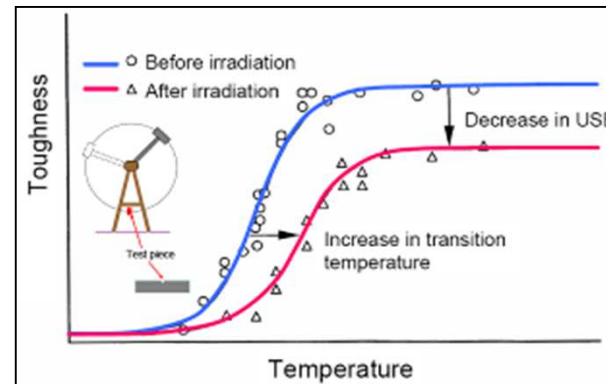
Project Status

- Basic design phase in progress at CEA
- Feedback from MICA hosting system design

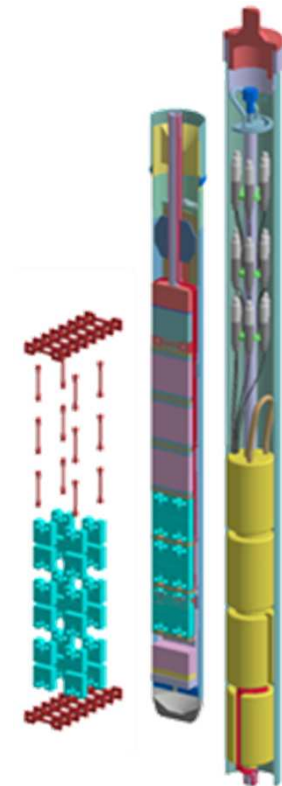
PHYSICAL PROPERTIES OF NPP PRESSURE VESSELS STEELS UNDER LOW DPA: THE OCCITANE HOSTING SYSTEM



- Static Helium capsule
 - Based on the OSIRIS feedback (IRMA test device, 150 irradiation cycles)
- In-reflector fixed location
 - Dose : up to 100 mdpa/y (1 MeV)
- Samples temperature adjustment
 - Various materials (WWER...)
 - 230- 300°C
 - Gamma heating
 - Gas gap dimension
 - Electric heating elements
- At least, 18 thermocouples, and 45 dosimeters

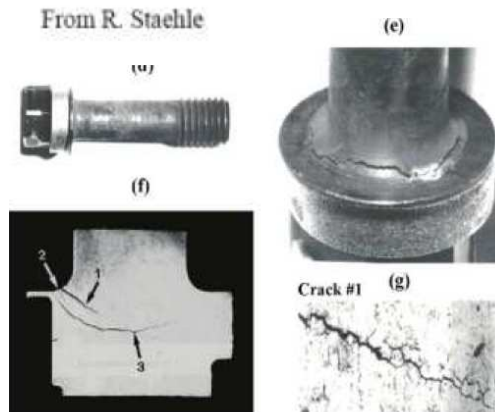


- ✓ Equivalent carrying volume: 30x62.5x500mm³
- ✓ Helium gas
- ✓ 230 – 300°C (furnace with 6 heating zones)
- ✓ 100 mdpa/year

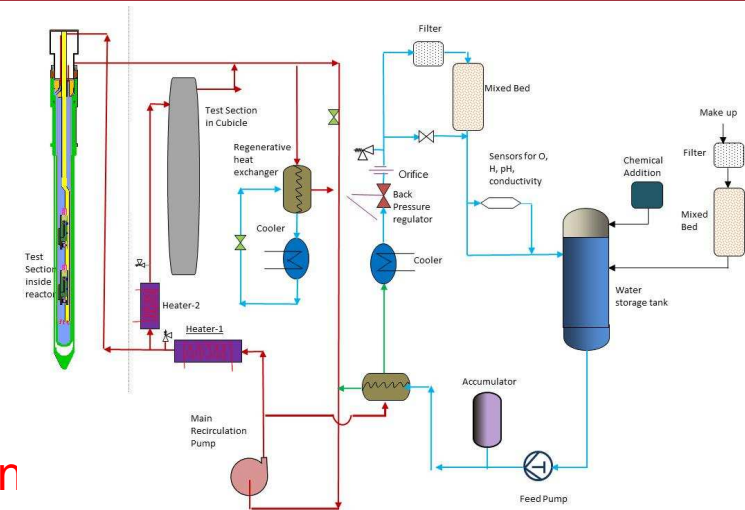


Project Status

- Feasibility study in 2013
- Next design phase adapted to customer requirements (temperature and gradients, neutron flux, sample holder section...)



Localized corrosion phenomena can be a strong issue in some LWRs !!



CLOE designed to perform integral experiments on crack initiation and crack propagation

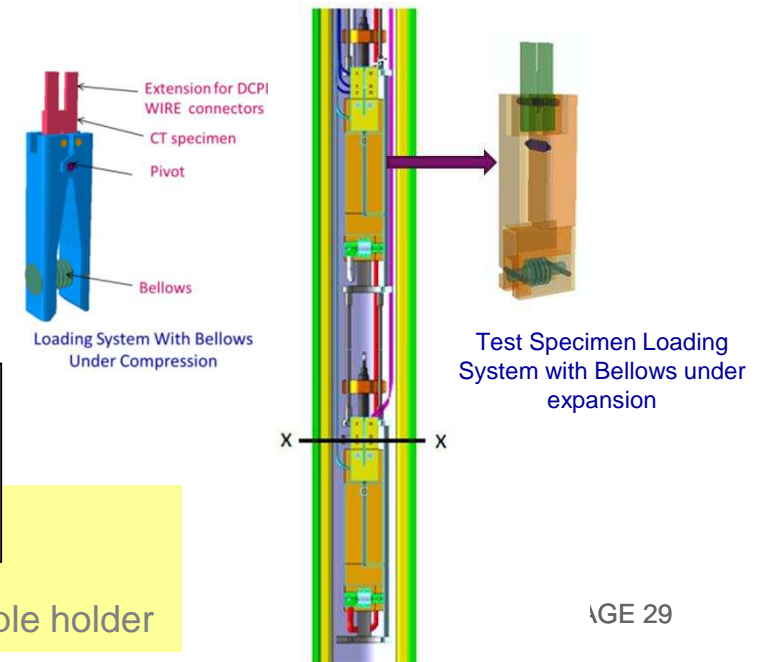
- **LWR conditions:** well controlled and adjusted water chemistry, temperatures, ...
- Fixed location (in reflector or in core)
- In-situ measurements: ECP, pH, H_2 , load, LVDT, cracking propagation, DCPD



Project Status



- Preliminary design in progress at DAE/BARC: loop and sample holder



- ❖ JHR facility : a Material Testing Reactor designed
 - With the most recent technological developments (materials, instrumentation, I&C)
 - In a up-to-date safety frame (post-Fukushima)
- ❖ Operation as an international User's facility
 - JHR Consortium and international programs
 - Bilateral or multilateral programs
 - Key-stone for CEA candidacy as an "ICERR"
 - Welcome of scientists, engineers, operators, safety managers... in JHR teams
- ❖ Experimental capacity in support of fuel & materials irradiation pgs
 - Benefiting from OSIRIS and other facilities operational experience and knowhow
 - Integrating improvements from the JHR Consortium partners (on-line measurements, innovative technologies...)
- ❖ **Experimental capacity devoted in priority to LWR experiments**
 - **Fully compatible with WWER fuel rods and samples**
 - **Able to reproduce WWER irradiation parameters and environment**

*Thank you
for your attention !*



Commissariat à l'énergie atomique et aux énergies alternatives
Fuel Research Department (DEC)
Centre de Cadarache | 13108 Saint Paul lez Durance Cedex

**Nuclear Energy Division
(DEN)**

Etablissement public à caractère industriel et commercial | R.C.S Paris B 775 685 019