



# CFD analysis of non-axial flow in fuel assemblies

U. Bieder

## ► To cite this version:

U. Bieder. CFD analysis of non-axial flow in fuel assemblies. NURETH 16 - 16th International Topical Meeting on Nuclear Reactor Thermalhydraulics, Aug 2015, Chicago, United States. cea-02509183

**HAL Id: cea-02509183**

**<https://cea.hal.science/cea-02509183>**

Submitted on 16 Mar 2020

**HAL** is a multi-disciplinary open access archive for the deposit and dissemination of scientific research documents, whether they are published or not. The documents may come from teaching and research institutions in France or abroad, or from public or private research centers.

L'archive ouverte pluridisciplinaire **HAL**, est destinée au dépôt et à la diffusion de documents scientifiques de niveau recherche, publiés ou non, émanant des établissements d'enseignement et de recherche français ou étrangers, des laboratoires publics ou privés.

# CFD ANALYSIS OF NON-AXIAL FLOW IN FUEL ASSEMBLIES

**U. Bieder**

Commissariat à l'énergie atomique et aux énergies alternatives

CEA DEN/DANS/DM2S/STMF/LMSF

F-91191 GIF-sur-Yvette

ulrich.bieder@cea.fr

## ABSTRACT

CFD studies with the Trio\_U code were performed to evaluate the flow field and pressure drop in rod bundles with a slope angle of  $22^\circ$  between main flow and the axis of the rods. Comparison to the CEA experimental program EOLE is discussed which was performed with inclined rod bundles in a square channel. Finally, the inter-assembly flow in two adjusted parts of fuel assemblies, separated by the assembly bypass flow, is analyzed. The large eddy simulation (LES) method is used to account for non-isotropic turbulence. A mesh of 1.1 billion control volumes was used for this analysis. The simulation has been performed on 10,000 processor cores of the HPC computer CURIE of the TGCC. The correlation of the EOLE program underestimates the pressure drop of the assembly calculation by a factor of about six. In contrary to the flow in the open, unbounded core region modeled by the assembly calculation, the EOLE experiments have been performed in a square channel. Thus, questions rise concerning the applicability of correlations derived from a channel configuration to the unbounded core region. Simulating the flow in the inclined rod bundle of the EOLE experiment by using the open boundary conditions of the assembly calculation confirms the under prediction of the correlation.

## KEYWORDS:

Fuel assembly, CFD, LES, cross flow, pressure drop

## 1. INTRODUCTION

Heterogeneities in the coolant flow map in PWR cores are one of the mechanisms involved in fuel assembly deformation which has sometimes been detected after core unloading /1/. The cross flow within and between fuel assemblies, which are strongly influenced by the core inflow and outflow conditions, generate lateral hydraulic forces. Pressure forces acting on the rods are assumed to be the dominant hydro-mechanical forces under high mass flow conditions. Temperature and flux distribution does not show a strong correlation to the assembly deformation /2/.

The pressure drop coefficient depends on the mass flow rate and on the slope angle between the flow and the fuel bundle axis. Usually, empirical correlations were used to estimate the pressure drop in rod bundles /3/. These correlations have been established from rather old experimental tests, which have not all been validated on geometries similar to those of PWR fuel assemblies. Thus nuclear reactor specific experimental programs have been performed by Peybernes /4/ and Barcellos et al /5/ to evaluate the pressure forces acting on tube bundle under non-axial flow conditions.

To our knowledge, CFD studies to evaluate the pressure drop of rod bundles with slope angles between main flow direction and bundle axis have not been published to date. Thus comparisons of CFD calculations with the Trio\_U code to an experimental program of CEA with inclined rod bundles in a channel are discussed. Then the inter assembly flow in two adjusted parts of inclined fuel assemblies,

separated by the assembly bypass flow is analyzed. After describing the main features of the Trio\_U code /6/ for the application of Large Eddy Simulations (LES) (chapter 2), the measurements of Peybernes /4/ were used to validate this code for flow in rod bundles with a slope angle of  $22^\circ$  between main flow and rods (chapter 3). The validated code is then applied to quantify the flow fields and pressure forces in adjunct sections of two adjunct fuel assemblies in cross flow (chapter 4). In this context, the influence of the inter-assembly gap on the flow field is discussed. Finally, the limitation of existing pressure drop correlations for the application in the reactor core is stressed out (chapter 5).

## 2. THE TRIO\_U CODE

Trio\_U is a CFD code dedicated to unsteady, low Mach number, turbulent flows /6/. The code is especially designed for industrial CFD calculations on structured (parallelepipeds) and non-structured (tetrahedrons) grids of several hundreds of millions of meshes. The platform independent code, developed at CEA, is based on an object oriented, intrinsically parallel approach and is coded in C++ /7/. The flexible code structure allows the user to choose a suitable discretization method and to combine various appropriate physical models, including different treatments of turbulence. Several convection and time marching schemes as well as a wide range of boundary conditions are available. For all that flexibility in the field of application, the code has been run successfully on massively parallel computers with up to 10000 processor cores without a significant reduction of the overall performance /8/.

A hybrid Finite Volume Element discretization method (FVE) is implemented for tetrahedral grids. This method approximates a continuous problem by a discrete solution in the space of the finite elements by maintaining the balance notation of finite volumes. In Trio\_U, the main unknowns as velocity and scalars (e.g. temperature) are located in the center of the faces of the tetrahedral element leading to a P1 non-conforming discretization (P1NC). Thus, the number of control volumes for the momentum and scalar conservation is approximately two times the number of tetrahedral elements. The pressure is discretized in both the center (P0) and the vertices (P1) of an element. The resulting staggered mesh arrangement improves the velocity/pressure coupling, increases the divergence free basis and shows a hyper convergence behavior on mesh refinement. The SOLA velocity projection method of Hirt /9/ is used to assure the mass conservation.

In the presented analysis, only Large Eddy Simulations (LES) are used to treat turbulence effects. An explicit 2<sup>nd</sup> order Adams-Bashforth time marching scheme was used to temporally integrate the momentum equations. The linear system of the pressure projection method is solved once per time step by means of a conjugate gradient method (CGP) with SSOR preconditioning. The numerical scheme for LES calculations recommended with Trio\_U is summarized in Tab. 1. More detailed information on the numerical scheme and the solution method has been discussed by Ducros /10/.

Tab. 1: Recommended numerical scheme for LES calculations with Trio\_U

Mesh		Tetrahedral elements
Discretization	Pressure	P0+P1
	Velocity	P1_non-conforming
	Time scheme	2 <sup>nd</sup> order Adams-Bashforth
	Convection term	2 <sup>nd</sup> order centered with 20% upwind stabilization
	Diffusion term	2 <sup>nd</sup> order centered
Pressure solver		Petsc CGP with SSOR preconditioning
Wall law		wall law by Reichhardt
Turbulence	LES	WALE

### 3. THE EOLE EXPERIMENTS

#### 3.1 Experimental Setup

An experimental device called EOLE has been designed and built to characterize the cross flow through a rod bundle at different slope angles [4]. The test section in Plexiglas allows an optical access to flow by Laser Doppler Anemometer measurements (LDA) through the rod bundle. The horizontal channel of square section ( $106.7 \times 106.7 \text{ mm}^2$ ) can contain a rod bundle of maximum  $8 \times 8$  rods at an angle with the horizontal channel of  $90^\circ$ ,  $67.5^\circ$ ,  $45^\circ$  and  $30^\circ$ . 1 to 8 rows of rods can be mounted in the test section. The assembly mock-up is similar to the PWR fuel assembly geometry with stainless steel rods of 9.5mm diameter, arranged in a square array with a pitch of 12.6 mm. Two pressure taps are set upstream and downstream from the assembly mock-up in a steady state flow area, enabling measurement of the pressure drop due to the rod bundle in the channel for different inlet flow rates. Fig. 1 shows the EOLE test section with assembly mock-up at an inclination of  $30^\circ$ .



Fig. 1: EOLE test section with a tube bundle inclined at  $30^\circ$ .

The pressure drop measurements presented here were performed with 8 and 4 rows in stream wise direction, each with 8 rods in span wise direction. The pressure drop of a pure 4-row rod bundle corrected for the influence of the hydraulic discontinuities at the inlet and outlet of the bundle can easily be determined by subtracting the 4-row pressure drop from the 8-row pressure drop.

#### 3.2 Main Experimental Results

Peybernes [4] has shown that the pressure drop of the rod bundle is a function of the mean velocity between the rods  $v_{0\text{-gap}}$ , calculated for the same rod bundle and the same flow conditions at pure cross flow of  $90^\circ$  inclination angle. To better define this velocity in the rod gaps, a typical stream line going through the gap between two rods located side by side is given in red in Fig.2. In this context the velocity is decomposed in its components  $v_x$  and  $v_z$ ,  $\psi$  is the inclination angle of the flow with respect to the bundle axe and  $\delta$  is the angle of the flow in the gap. An inclination angle of  $0^\circ$  represents pure axial flow; an inclination angle of  $90^\circ$  represents a pure cross flow.

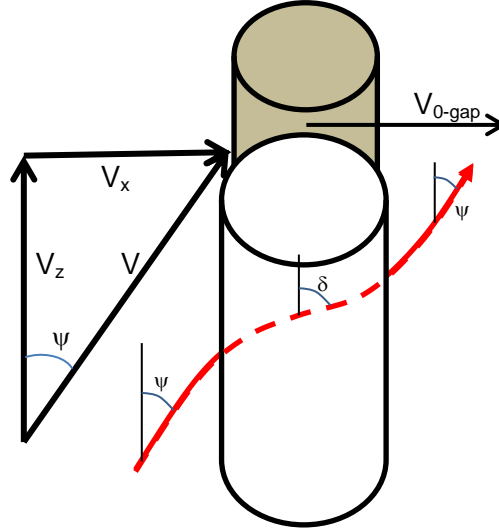


Fig.2: Schematic stream line between two adjunct fuel rods

Peybernes /4/ has calculated the pressure drop  $\Delta P_c$  of  $n_{row}$  rows from the correlation:

$$\Delta P_c = n_{row} \cdot K_c(\psi) \cdot \frac{1}{2} \rho v_{0-gap}^2 \quad (1)$$

The pressure drop coefficient  $K_c(\psi)$  is a function  $\xi$  of the inclination angle  $\psi$ .

$$K_c(\psi) = K_c \cdot \xi(\psi) \quad (2)$$

This function has been detected experimentally in the EOLE experiments /4/:

$$\xi(\psi) = \left( \frac{\sin(\psi)}{\cos(\frac{90-\psi}{2})} \right)^{1.7} \quad (3)$$

Two correlations for the pressure drop coefficient  $K_c$  have been tested:

- The coefficient of EOLE /4/:  $K_{EOLE} = 5.64 \cdot Re_0^{-0.3}$  (Indice EOLE) (4a)
- The coefficient of Idel'cik /3/:  $K_{Idel'cik} = 2.66 \cdot Re_0^{-0.2}$  (Indice Idel'cik) (4b)

The Reynolds number is calculated from  $v_{0-gap}$ , the cinematic viscosity of the fluid and the hydraulic diameter which is in this case the tube diameter:

$$Re_0 = \frac{D_h \cdot v_{0-gap}}{\nu} \quad (5)$$

Two EOLE experiments were analyzed numerically; one with an inclination angle of  $90^\circ$  and one with an inclination angle of  $22^\circ$ . The flow conditions of these two experiments are given in Tab.2.

Tab.2: Flow conditions of the analyzed EOLE experiments

$\psi$ [°]	$v_x$ [m/s]	$v_{0-gap}$ [m/s]	$D_h$ [m]	$\nu$ [m <sup>2</sup> /s]	$Re_0$
$90^\circ$	1.6	2.37	0,0095	$6.58 \cdot 10^{-7}$	$3.42 \cdot 10^4$
$22^\circ$	1.6	2.37	0,0095	$6.58 \cdot 10^{-7}$	$3.42 \cdot 10^4$

The pressure drop per row of rods are given in Tab 3, calculated with the pressure drop coefficients of EOLE (eq.(4a)) and Idel'cik (eq.(4b)). The pressure drop of the correlation of Idel'cik is about 30% higher than that calculated with the correlation of EOLE, most probably because in EOLE the effect of the

bundle inflow and outflow rows on the pressure drop have been eliminated by the already described experimental procedure /4/.

Tab 3: Pressure drop of the two analyzed EOLE experiments

$K_{EOLE}$	$K_{Idel'cik}$	Inclination angle $\psi$	$\xi(\psi)$	$\Delta P_{Idel'cik}$ [Pa/row]	$\Delta P_{EOLE}$ [Pa/row]
0.2461	0.3296	90°	1.0	917	685
0.2460	0.3296	22°	0.2558	235	175

### 3.3 Numerical Analysis of the EOLE Experiments

In this preliminary study the flow in both inclined (22°) and not inclined (90°) tube bundles is simulated with Trio\_U and LES turbulence modelling approach (numerical scheme see chapter 2). The square channel upwind and downwind of the bundle is not modelled in this analysis to simplify the calculation. In fact, only a bundle of 5x5 rods in stream and span wise direction is placed into a channel of 53.35mm height. The CAD model of this geometrically simplified EOLE tube bundle with an inclination angle of 22° is given in Fig.3.

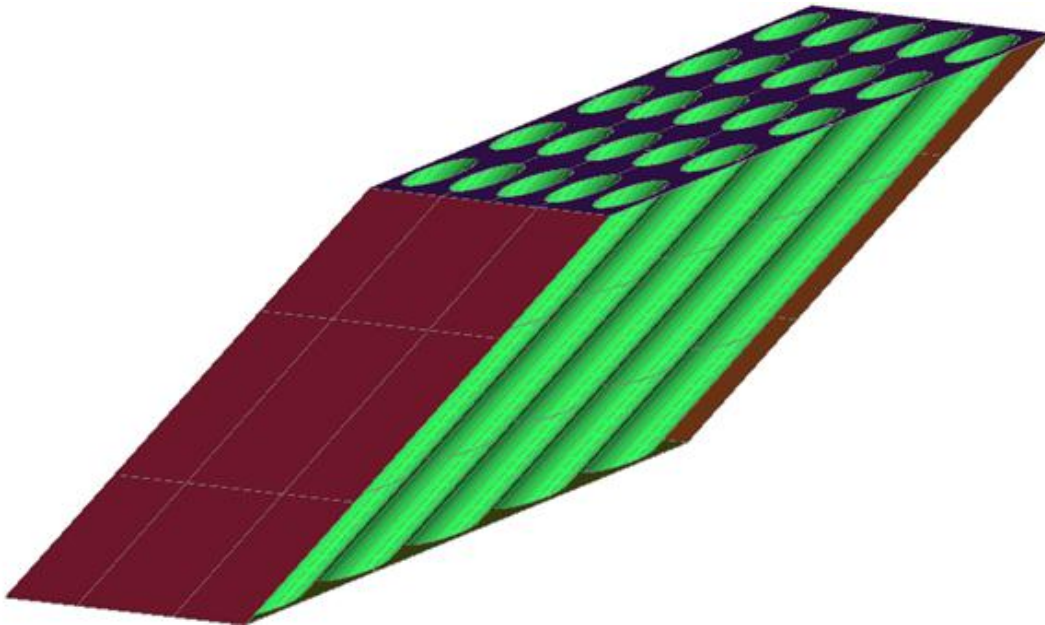


Fig.3: CAD model for the simplified EOLE geometry

The use of periodic boundary conditions in direction of the main flow allows directly comparing the numerically calculated pressure drop to the corrected pressure drop of the experiment. Five tube rows were taken into account in the model in main flow direction to assure the de-correlation of the turbulent fluctuations at the periodic faces. Periodicity is also used in span wise direction by imposing additionally a globally zero flowrate trough these lateral periodic faces. Fixed walls with standard wall functions are used for the rods and the channel walls which vertically bound the calculation domain. The schematic presentation of the boundary conditions is shown in Fig.4.

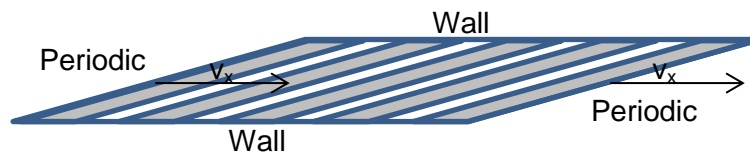


Fig.4: Boundary conditions for the simulation of the EOLE facility.

Source terms in form of constant pressure gradients are used in both periodic directions to impose a constant mass flow rate in main flow direction and a zero mass flow in span wise direction.

A typical flow field in the inclined tube bundle of the geometrically simplified EOLE experiment is shown in Fig.6. Stream lines based on the mean velocity are shown. Directly downwind of the rods, streamlines raise parallel to the inclined rods. In the space between the rods, the streamlines descent in wave form. The reason for this behavior can be seen in the mean vertical velocity ( $v_z$ ) distribution, visualized in the horizontal cut plane at  $z=0.025\text{m}$ . Leeward of the rods (in  $x$  direction),  $v_z$  is positive, span wise between the rods (in  $y$ -direction  $v_z$ ) is negative and in the sub channels between four rods  $v_z$  is about zero. This distribution of the vertical velocity leads to the flow field presented by the two vector plots. Two vertical cup planes are shown at  $y=0.027\text{m}$  (between the rods) and at  $y=0.032\text{m}$  (through the center of the rods). Lines representing these cut planes are added to the horizontal cut plane.

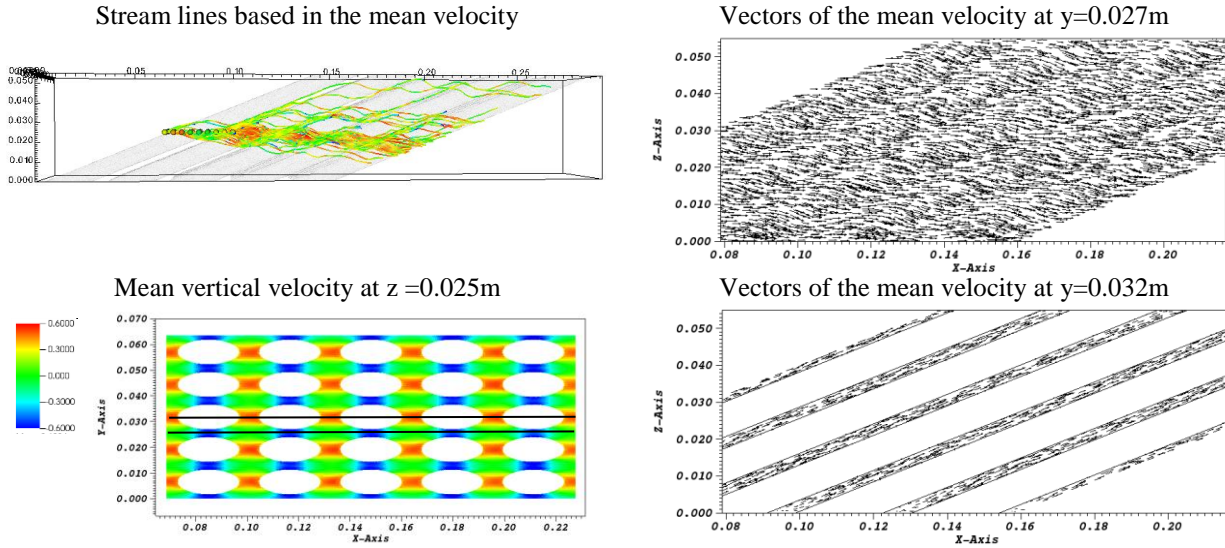


Fig.5: Flow field of the simplified calculation of the EOLE experiment

The pressure drop per row is given in Tab 4 calculated with pressure drop coefficients of EOLE and Idel'cik as well as with LES. The LES underestimates the pressure drop of the correlations for the non-inclined bundle and slightly overestimates the pressure drop for the inclined bundle.

Tab.4: Comparison of the pressure drop per row; correlations and LES

Inclination angle $\psi$	$\Delta P_{\text{Idel'cik}}$ [Pa/row]	$\Delta P_{\text{EOLE}}$ [Pa/row]	$\Delta P_{\text{LES}}$ [Pa/row]
90°	917	685	591
22°	235	175	250

Nevertheless, experiments and LES give a pressure drop per row which is sufficiently close to confirming the validity of the simulation calculation by the experiment.

#### 4. TRANSVERSE FLOW IN FUEL ASSEMBLIES

The objective of this enlarged numerical analysis with LES turbulence modelling is to predict the pressure forces acting on fuel assemblies by a strong transversal flow. The simulation also expects to show the influence of the inter-assembly bypass flow on the global flow behavior in the vicinity of the mixing grid.



The calculation simulates the flow in a nuclear reactor core close to nominal conditions (water at 300°C and 160 bar) without representing a particular location in the core. However, the flow condition approaches those of assemblies close to the core inlet, radially at the periphery of the core where the radial velocity gradients are the most important. A typical fuel assembly and the CAD model around the two adjunct mixing grids are given in Fig.6. The CAD model has been created with SALOME /11/.

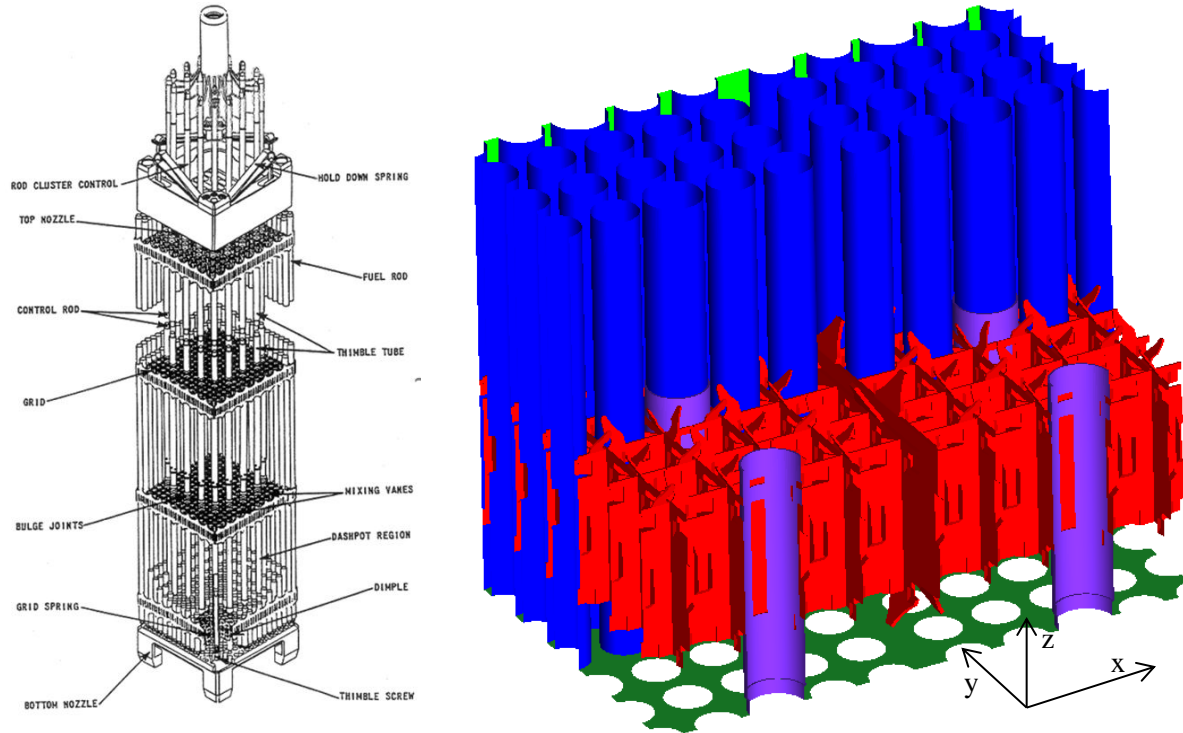


Fig.6: typical fuel assembly and CAD model of the mixing grid with fuel and control rods

The Reynolds number of the bare rod bundle calculated with the axial velocity is about 745000 and the inclination angle of the flow with respect to the axis of the rods is about 23°. The flow conditions are summarized in Tab.5.

Tab.5: Flow conditions of the assembly calculation

$\psi$ [°]	$v_x$ [m/s]	$v_y$ [m/s]	$v_z$ [m/s]	$v_{0\text{-gap}}$ [m/s]	$D_h$ [m]	$v$ [m <sup>2</sup> /s]	$Re_0$
23	-1.6	0.0	4.0	6.2	0.0095	$1.21 \cdot 10^{-7}$	$4.89 \cdot 10^5$

The used boundary conditions are: imposed velocity at the bundle inlet, pressure boundary at the bundle outlet, periodicity in transversal and span wise direction. A periodic box is connected to the inlet face of the assemblies. The flow in the periodic box mimics the flow in an infinitely long tube bundle. A preparatory transient is calculated for this periodic box until a fully developed turbulent flow is established with converged statistics (mean values and RMS). Momentum sources assure constant mean velocity in axial (4.0m/s), transversal (-1.6m/s) and span wise (0.0m/s) direction. After stabilization of the flow and convergence of the statistics, the periodic box is connected to the inlet face of the assemblies. As described in more detail in /12/, instantaneous velocities are imposed in this way at each time step at the inlet of the calculation domain.

The meshing has been created with CENTAUR /13/; 2 layers of prisms have been introduced close to walls. These prisms have been cut into tetrahedrons to create a pure tetra meshing. The surface meshing of



the mixing grid is given in Fig.7. The inter-assembly gap with the positioning devices, the mixing vanes and dimples are good visible.

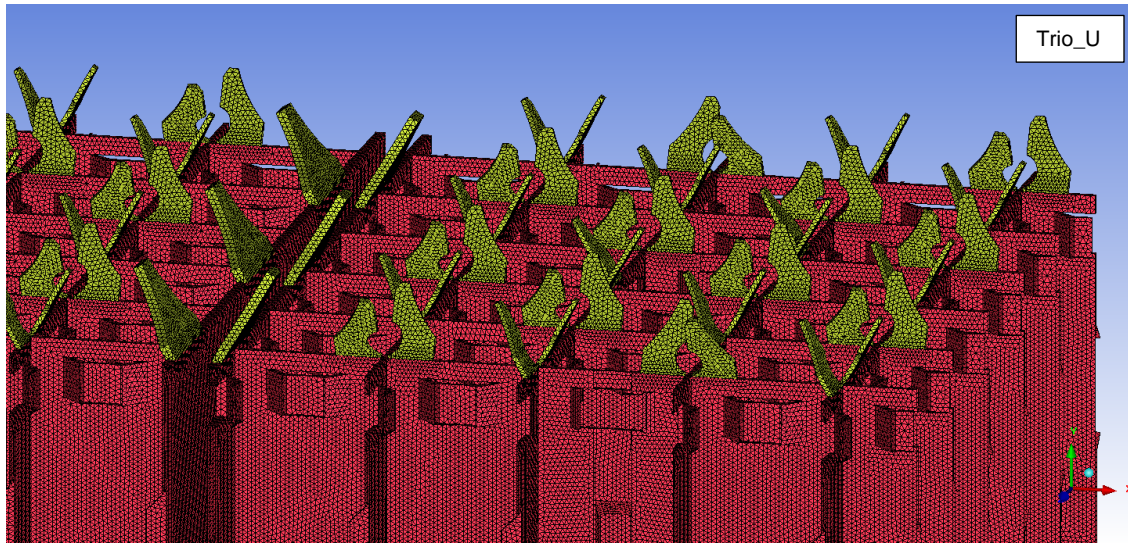


Fig.7: Surface meshing of the mixing grids

700 million tetrahedrons discretize the assemblies and the periodic box what led to 1.1 billion velocity control volumes for the Trio\_U calculation due to the used face centered discretization. The simulation to reach convergence of the mean velocity in the whole domain has been performed in 22 CPU days on 10000 processor cores of CURIE of the TGCC /14/. The RMS of the velocity did not converge totally close to the outlet of the domain.

Streamlines as well as velocity vectors and the reduced pressure ( $P/\rho$ -source term) for two cut planes are shown in Fig.8. Two types of streamlines can be observed; those aligned to the transvers flow and those aligned to the rods. This separation in two main flow directions has already been observed in the EOLE calculations but is much more accentuated here.

Only a much reduced transvers flow is present directly downstream of the grid; this can be seen from the streamlines and the velocity distribution at  $z=0.01\text{m}$ . Close to the grid, the flow is mostly influenced by the mixing and guiding vanes which initiate a strongly swirling flow. The inter-assembly bypass flow accelerates between the assemblies and is canalized between the two mixing grids. This leads to the formation of a kind of swirling plane jet downstream of the gap as can be seen from the stream lines directly downstream of the mixing grids.

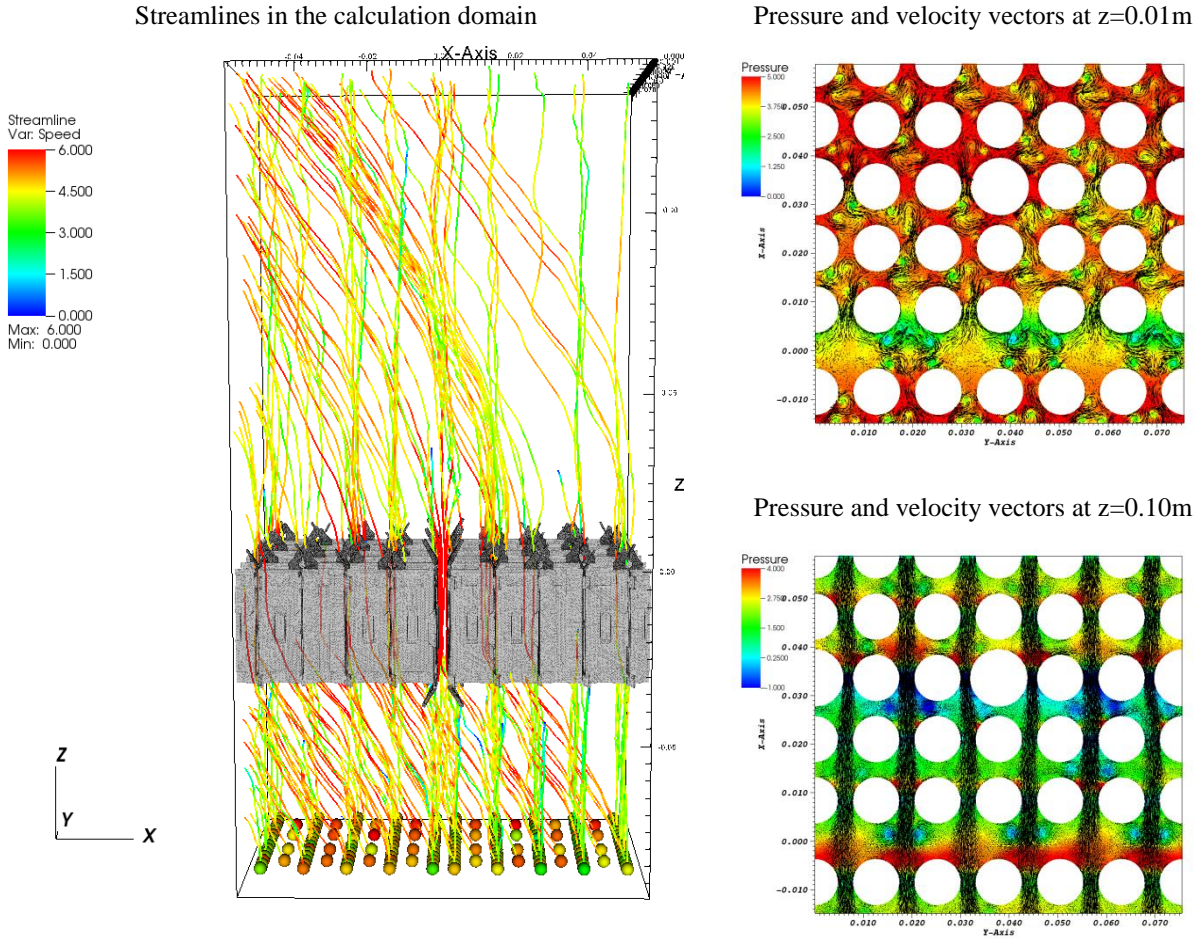


Fig.8: Streamlines as well as reduced pressure and velocity vectors in horizontal cut planes

The transvers velocity dominates the flow further downstream of the grid as can be seen from the cut plane at  $z=0.1\text{m}$ , although some rather strong swirls are still present (downstream of the guiding vanes and right in the middle between two guide tubes).

The pressure forces on the rods can easily be calculated from the pressure drop per row of rods and the rods surface. This pressure drop per row, calculated with the correlation of EOLE (eq.(4a)), and Idel'cik (eq.(4b)) is compared in Tab.6 to the pressure drop calculated with the LES for the periodic box. In accordance to the EOLE experiments, the flow in the periodic box is also not perturbed by the mixing grid. The simulation overestimates the pressure drop of the correlation of Idel'cik by a factor 3.96 and the correlation EOLE by a factor 6.92.

Tab 6: Pressure drop of the assembly calculation

$K_{EOLE}$	$K_{Idel'cik}$	$\xi(\psi)$	$\Delta P_{Idel'cik}$ [Pa/row]	$\Delta P_{EOLE}$ [Pa/row]	$\Delta P_{LES}$ [Pa/row]
0.1108	0.1936	0.2839	771	441	3054

We suppose that the experimental setup with a tube bundle in a closed square channel is responsible for the large difference. The configuration and boundary conditions of the assembly calculation represent an open, i.e. unbounded domain, quite the contrary to the EOLE experiment bounded by the channel walls.

## 5. FLOW IN AN UNBOUNDED ASSEMBLY

The position and extend of the simulation domains of the EOLE calculation (chapter 3) and assembly calculation (chapter 4) are compared in Fig.9. The corresponding boundary conditions are also given. The core region is schematically represented by the fuel rods and the main flow direction is given by the arrow. It is evident that the EOLE experiment does not represent correctly the physics of a transvers flow in a fuel assembly of a nuclear reactor core. The walls of the experimental channel inhibit any flow aligned to the rods axis over a longer axial distance as found in the assembly calculation. The setup of the assembly calculation takes the open, unbounded character of a fuel assembly in a reactor core most probably better into account.

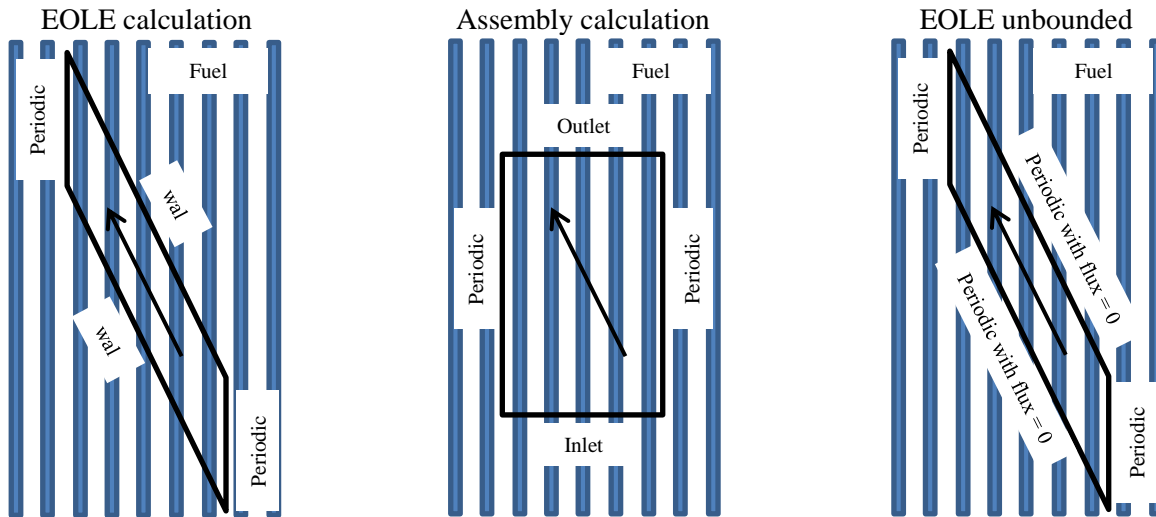


Fig.9: Setup of the EOLE and assembly calculation as well as of the unbounded EOLE calculation

In order to test the impact of the restriction of the calculation domain on the pressure drop, a new modeling setup is proposed in the same Figure which resumes the geometry of the EOLE calculation, but which allows at the same time the flow to develop locally in axial direction, aligned to rod axes; only globally this flux is set to zero. This configuration is called “EOLE unbounded”.

The norm of the velocity for the two cases “EOLE calculation” and “EOLE unbounded” is shown in Figure 10 for a vertical cut plane between the rods at  $y=0.027\text{m}$ .

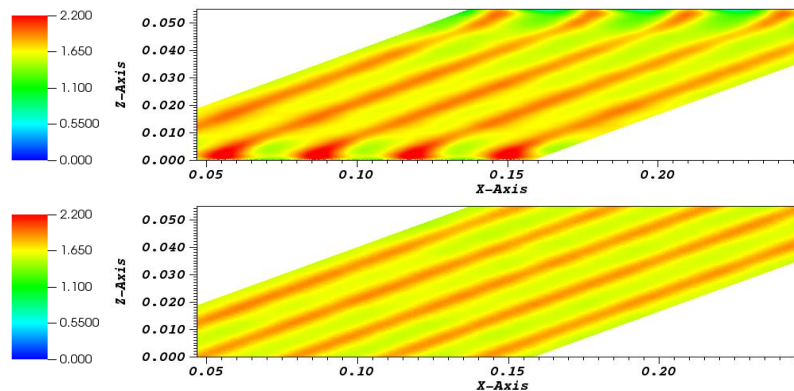


Fig.10: Norm of the velocity at  $y=0.027\text{m}$ ; top “EOLE calculation”, bottom “EOLE unbounded”

For the identic axial mean velocity of 1.6m/s the flow field of the EOLE calculation is given at the top; that of the open EOLE unbounded calculation is given at the bottom. Other than in the unbounded calculation, the mean velocity in the EOLE calculation is accelerated near the lower channel wall due to the global downward flow already shown in Fig.5. This downward flow balances the rising flow downwind of the rods. Near the top wall of the channel, the flow is de-accelerated. The resulting pressure drop of these two configurations is compared in Tab.7 to the experimentally derived pressure drop correlations.

Tab 7: Comparison of the pressure drops of EOLE experiment, EOLE calculation and EOLE unbounded

EOLE experiment		EOLE calculation	EOLE unbounded
$\Delta P_{\text{Idel'cik}}$ [Pa/row]	$\Delta P_{\text{EOLE}}$ [Pa/row]	$\Delta P_{\text{LES}}$ [Pa/row]	$\Delta P_{\text{LES}}$ [Pa/row]
235	175	250	930

The configuration “EOLE unbounded” overestimates the correlation of Idel’cik by a factor 3.95 and the correlation of EOLE by a factor 5.3. These differences are very close to those determined for the same correlations and the assembly calculation (see Tab.6).

## 6. CONCLUSION

Heterogeneities in the coolant flow map in PWR cores are one of the mechanisms involved in fuel assembly deformation. The cross flow within and between fuel assemblies generates lateral hydraulic forces which have been studied with Large Eddy Simulation (LES). The inter assembly flow in two adjusted parts of fuel assemblies, separated by the assembly bypass flow, have been analyzed with the Trio\_U code. The flow field and pressure forces in the assemblies were quantified for a slope angle of 22° between main flow and rods. A mesh of 700 million control volumes was used for the analysis. The simulation has been performed on 10,000 processor cores of the HPC computer CURIE of the TGCC. The calculated pressure drop is compared to correlations of single effect experiments of the CEA (EOLE) and to a correlation presented by Idel’cik. In contrary to the flow in the open, un-bounded core region, the EOLE experiments have been performed in a square channel bounded by walls. Typical PWR fuel assemblies were mounted in this channel with different inclination angles. The achieved comparison between experiment and simulation calculation raise the questions concerning the applicability of correlations derived from a channel configuration to the open core region. The presented numerical study together with the experimental findings enable us to better understand the applicability of pressure loss correlations on core regions with local cross flow and to evaluate hydrodynamic forces on fuel assemblies in the reactor.

## REFERENCES

- [1] H.J.Lippert, G.Gentet, P.Mollard, N.Garne : Zero Tolerance for Failure: An Areva Initiative to Improve Reliability. atw 54, 4, April 2010  
[https://inis.iaea.org/search/search.aspx?orig\\_q=RN:41067904](https://inis.iaea.org/search/search.aspx?orig_q=RN:41067904)
- [2] N.Teboul, G.Gentet, C.Hintergräber, P.H.Louf, C.Wiltz: Areva product experience in support EPR fuel design. In: TOP FUEL 2012 Manchester UK, 2-6 September 2012  
<http://www.euronuclear.org/events/topfuel/topfuel2012/transactions/Transactions-Operation.pdf>
- [3] I.E. Idel’cik : Mémento des pertes de charge, coefficient de pertes de charge singulières et de pertes de charge par frottement, Edition Eyrolles, 1986



- [4] J. Peybernes: Evaluation of the forces generated by cross-flow on PWR Fuel assembly. In: Structural behavior of fuel assemblies for water cooled reactors. Proceedings of a technical meeting held in Cadarache, France, 22–26 November 2004, IAEA-TECDOC-1454  
[http://www-pub.iaea.org/MTCD/publications/PDF/te\\_1454\\_web.pdf](http://www-pub.iaea.org/MTCD/publications/PDF/te_1454_web.pdf)
- [5] C. R. Barcellos, C. L. Bartz, L. A. M. Endres and S. V. Möller: Velocity and Pressure Fluctuations on inclined tube banks submitted to turbulent flow. Transaction SMiRT Whashington DC, 2001  
<http://www.mecanica.ufgrs.br/lmf/J1182.PDF>
- [6] Trio\_U (2008): <http://www-trio-u.cea.fr/>
- [7] C. Calvin, O. Cueto, P. Emonot (2002): An object-oriented approach to the design of fluid mechanics software. ESAIM: Mathematical Modelling and Numerical Analysis - Modélisation Mathématique et Analyse Numérique, 36.5, 907-921 (2002) <http://eudml.org/doc/245828> .
- [8] U. Bieder, F. Falk, G. Fauchet : CFD analysis of the flow in the near wake of a generic PWR mixing grid. Ann. Nucl. Energy (2014), article in press <http://dx.doi.org/10.1016/j.anucene.2014.08.004>
- [9] C.V. Hirt, B.D. Nichols, N.C. Romero (1975): SOLA - A numerical solution algorithm for transient flow. Los Alamos National Lab., Report LA-5852 (1975)
- [10] F. Ducros, U. Bieder, O. Cioni, T. Fortin, B. Fournier, G. Fauchet, P. Quéméré (2010): Verification and validation considerations regarding the qualification of numerical schemes for LES for dilution problems. Nuclear Engineering and Design, 240 (2010), 2123-2130
- [11] SALOME: <http://www.salome-platform.org/>
- [12] U. Bieder, F. Falk, G. Fauchet (2014): LES analysis of the flow in a simplified PWR assembly with mixing grid: Progress in Nuclear Energy 75 (2014) 15-24 <http://dx.doi.org/10.1016/j.pnucene.2014.03.014>
- [13] CENTAUR: <http://www.centaurosoft.com>
- [14] TGCC: <http://www-hpc.cea.fr/fr/complexe/tgcc-curie.htm>