



**HAL**  
open science

# Reproducible Data Processing Research for the CABRI R.I.A. experiments Acoustic Emission signal analysis

L. Pantera, O. Issiaka Traore

## ► To cite this version:

L. Pantera, O. Issiaka Traore. Reproducible Data Processing Research for the CABRI R.I.A. experiments Acoustic Emission signal analysis. ANIMMA 2015 - 4th International Conference on Advancements in Nuclear Instrumentation Measurement Methods and their Applications, Apr 2015, Lisbonne, Portugal. cea-02500852

**HAL Id: cea-02500852**

**<https://cea.hal.science/cea-02500852>**

Submitted on 6 Mar 2020

**HAL** is a multi-disciplinary open access archive for the deposit and dissemination of scientific research documents, whether they are published or not. The documents may come from teaching and research institutions in France or abroad, or from public or private research centers.

L'archive ouverte pluridisciplinaire **HAL**, est destinée au dépôt et à la diffusion de documents scientifiques de niveau recherche, publiés ou non, émanant des établissements d'enseignement et de recherche français ou étrangers, des laboratoires publics ou privés.

# Reproducible Data Processing Research for the CABRI R.I.A. experiments Acoustic Emission signal analysis

Laurent Pantera\*, Oumar Issiaka Traore†

\*CEA, DEN, CAD/DER/SRES/LPRE, Cadarache, F-13108 Saint-Paul-lez-Durance, France

†Laboratory of Mechanics and Acoustics (LMA) CNRS, 13402 Marseille FRANCE

**Abstract**—The CABRI facility is an experimental nuclear reactor of the French Atomic Energy Commission (CEA) designed to study the behaviour of fuel rods at high burnup under Reactivity Initiated Accident (R.I.A.) conditions such as the scenario of a control rod ejection. During the experimental phase, the behaviour of the fuel element generates acoustic waves which can be detected by two microphones placed upstream and downstream from the test device. Studies carried out on the last fourteen tests showed the interest in carrying out temporal and spectral analyses on these signals by showing the existence of signatures which can be correlated with physical phenomena. We want presently to return to this rich data in order to have a new point of view by applying modern signal processing methods. Such an antecedent works resumption leads to some difficulties. Although all the raw data are accessible in the form of text files, analyses and graphics representations were not clear in reproducing from the former studies since the people who were in charge of the original work have left the laboratory and it is not easy when time passes, even with our own work, to be able to remember the steps of data manipulations and the exact setup. Thus we decided to consolidate the availability of the data and its manipulation in order to provide a robust data processing workflow to the experimentalists before doing any further investigations. To tackle this issue of strong links between data, treatments and the generation of documents, we adopted a Reproducible Research paradigm. We shall first present the tools chosen in our laboratory to implement this workflow and, then we shall describe the global perception carried out to continue the study of the Acoustic Emission signals recorded by the two microphones during the last fourteen CABRI R.I.A. tests.

**Index Terms**—Reproducible Research, R language, Acoustic Emission, CABRI R.I.A. tests

## I. INTRODUCTION

THE CABRI facility is an French experimental nuclear reactor located at the Cadarache Research Centre in southern France. CABRI is made up of an experimental loop specially designed (*see figure 1*):

- to receive the instrumented test device housing the fuel rod to be tested in the centre of the driver core. This device also includes the instrumentation to control the experiment and to characterize the behaviour of the fuel rod during the power transient,

- to cool the experimental fuel rod in the required thermal-hydraulic conditions.

The LPRE laboratory of the CEA is in charge of the preparation and performance of the tests. Early after a test, its responsibilities also include a preliminary interpretation of the experimental data from signals obtained by many sensors placed within the experimental cell.

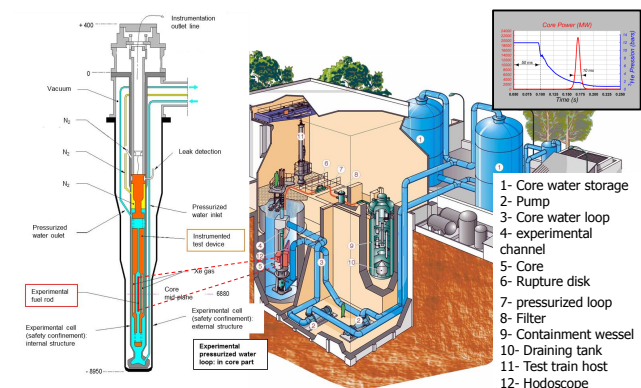


Figure 1: Experimental pressurized water loop (155 bar, 300°C) with the test device

In this article, We shall focus in the article only on microphone signals placed upstream and downstream from the test device. The main phenomenon to be tracked is the fuel rod failure. It is our ambition to return to the data of the last fourteen tests, carried out from the year 1993 to 2002, in order to highlight specific events which would have been precursors of the rod failure. We therefore had to face a classic problem for experimentalists managing large data sets. People who did the work left the laboratory and in spite of technical notes it is not easy to answer the following questions:

- 1) Choice of the raw experimental data among all the files acquired for every experiment,
- 2) Data cleaning (digitizing date correction, up-sampling, not identical sensors names along the years...),
- 3) Method to detecting abrupt changes in the microphone signals to generate events,

- 4) Parameter settings for treatments on the data and graphic representations of the results,
- 5) Control of the global coherence of the process.

Moreover, the difficulty in applying this process is that, in real life, it never flows smoothly from data collection to conclusions. We must repeat many parts of the breakdown discovering problems with the data, find the right adjustment of parameters to recover the old results and then finally apply new data analysis methodologies which may make a better use of the data. In fact, the important principle in our case, and generally in data processing, is iteration. We discovered there was a way to run it using the Literate Programming paradigm. Introduced for writing good software documentation with its maintenance as time passes, it is really worth exploring this orientation to work in data processing. The object of the work presented in this article is to demonstrate how we put this iteration principle in action in our laboratory. We shall first present the principle of the Literate Programming, then the software tools chosen to implement this workflow, and finally we shall describe the global perception carried out to continue the study of the Acoustic Emission signals recorded by the two microphones during the last fourteen CABRI R.I.A. tests.

## II. LITERATE PROGRAMMING

### A. General description

The idea comes from computer science. ‘‘Literate Programming’’ is a programming methodology devised by Knuth [1]. The aim was to create significantly better documentation of programs and also to provide a realistic means to help the programmers keep the documentation up to date according to the code evolution given the fact that the code and the documentation would be embedded in the same file. In fact, Knuth explains that rather than considering a program to be a set of instructions to a computer that includes comments to the reader, it should be seen as an explanation to a human with a corresponding code. Two processors called ‘‘tangle’’ and ‘‘weave’’ allow us to convert the original source document into an executable program and into a publishable document in high quality, respectively (i.e. with a table of contents, references, algorithms, figures etc...), the typesetting being managed by the T<sub>E</sub>X/L<sup>A</sup>T<sub>E</sub>X language [2]. The first Literate Programming environment called WEB [3] was designed by Knuth. There were then many other tools, often tied to a specific programming language, not always easy to learn. A simplified approach, called ‘‘noweb’’, was then proposed by Ramsey [4]. This solution requires the use of only one file with a minimum syntax to be learned. We shall now describe this way to process.

### B. The noweb solution

A *noweb* file is a text file containing ‘‘code delimiters’’ called *chunks* which separate code instructions from the documentation. Each code chunk begins with `<< chunk name >>=` on a line by itself and we have to

give it a name. Each documentation chunk begins with a line that starts with an @ on a line by itself also, without name. Chunks are terminated implicitly by the beginning of another chunk or by the end of the file. The documentation chunks contain text written in L<sup>A</sup>T<sub>E</sub>X. The Literate Programming tools help the user extract the code from the code chunks in order to compile, execute it and construct the documentation by extracting the L<sup>A</sup>T<sub>E</sub>X instructions from the documentation chunks. The supported languages depend on the Literate Programming tool used.

### C. The R Language

In our laboratory, we have been working for some years with the free powerful software **R** [5] for data manipulation and calculation. This software proposes an implementation of the noweb approach described in the previous section for doing Literate Programming. **R** has two special functions, *Sweave* [6] and *knit* [7] to process the noweb file where the text of a document is ‘‘woven’’ with the code written to perform calculations and produce the figures, the tables presenting the results. The processed file is another text file containing the L<sup>A</sup>T<sub>E</sub>X instructions of the documentation chunks and where the code chunks have been replaced by the results of their evaluation.

## III. SETTING UP THE LABORATORY NOTEBOOK

We give the software chosen to work in our laboratory.

### A. Editor

At the beginning of our approach, we worked with *Tinn-R* [8]. It is a very nice editor, easy to use and very efficient for using with the R and L<sup>A</sup>T<sub>E</sub>X languages. More recently, appeared *RStudio* [9] which is a powerful IDE<sup>1</sup> dedicated to **R**. With skill, we may prefer to use *Emacs* [10] with the add-on package *ESS (Emacs Speak Statistics)*. The package is designed to support editing of scripts and interaction with various statistical analysis programs such as R. Although the learning curve is not steep, emacs is a text editor with lots of great features very convenient when one knows how to use them in the everyday life manipulating data.

### B. Data Manipulation

As we already stated, we mainly use the **R** language but we also use the *python* and *octave* languages as well as the very convenient unix command, *awk* which are also supported by the *knit* function.

### C. Data Storage

We decided to manage the detected events with the DBMS<sup>2</sup> *PostgreSQL*. It has the advantage of being very well interfaced with the **R** Language.

<sup>1</sup>Integrated Development Environment

<sup>2</sup>DataBase Management System

#### D. Versioning

We track the different versions of some files with the *git* software [11]. The type of files under versioning can vary a lot, from the quality insurance header of the laboratory technical report, the bibliography or even the mock data for testing code. *Git* was chosen due to the fact that it is not necessary to set a server as *svn* software for example to use it, so it is more convenient to use for a small team as ours.

### IV. DATA RESUMPTIONS

Before doing further investigation on Acoustic Emission Signal, it has been necessary to search for the raw data and reconstruct the process to find the old results. Some amount of data manipulation before analysis is possible. Herein, we give the different steps of the process the experimentalists have to manage. It must be understood that minimum skills in different technical fields are required in order to be able to do the job. All people who are actually faced with data processing will recognize the tasks that we list herein but we think that it is useful to recall them in order to insist on the opportunity offered by the Literate Programming framework to track this complex process.

#### A. Obtaining Data

This step is very important for the fact to trust the quality of raw data spurs working for further investigation. Data came from multiple sources as several text files with specific formats, binary files, Relational Database, MS Excel. We have to follow for the variety of syntax used.

#### B. Cleaning Data

Here are some examples we encountered:

- The most basic operation consisted in making sure that files are readable stripping irrelevant characters introduced for example by the use of different Operating System or encoding system,
- There is also some trouble linked to the way of working: the labels used to name the same physical quantity across time can be different,
- In spite of all the precautions, there is always missing data we have to deal with,
- the microphone signals were recorded with an analogic Ampex system. Hence, we had to digitize the magnetic tapes for working on computer. This operation introduced erroneous date in the numerical files : data were indexed with the date of the digitization and not with the date of the test,
- The digital acquisition systems acquired the signals for flowmeters and pressure transducers with a lower sample rate than for the microphones. In the objective to do crossed comparisons these signals required an upsampling,

- Once all the dates were correct, we had to shift the values according to the definition of the TOP<sup>3</sup> for every test.

After editing all available data, we have to parse them into an usable format to begin the analysis.

#### C. Overview to control the coherence

It is well known that we can have a lot of information only in observing data. And when we are able to work with a lot of data at the same time, it is powerful to control the whole coherence apprehending available data for every test. With a language such as **R**, we easily superpose quantities as the experimental core power for every test (*see figure 2*). Graphics such as those of figure 3 and 4 are more powerful. On one diagram, the noise of every microphone given the test (*see figure 3*) is shown. The identical y-scale for all the diagrams yields important information about the acquisition system. Two tests appeared having a background noise with a high level. The work on dates can be controlled thanks to a whole vision as in figure 4 juxtaposing available microphone values with the core power of every test.

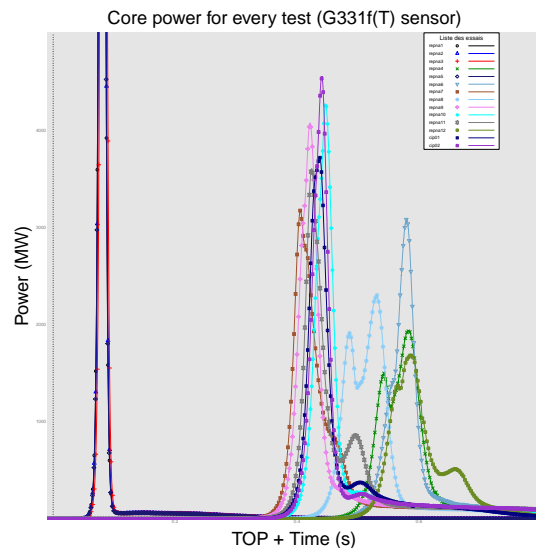


Figure 2: Core power for the studied CABRI tests

The operations described so far are time consuming and often boring. Thus, already at the beginning of the work, it is preferable to be familiar with a programming scripting language to perform the different tasks which can be rerun and then useful to make the data consistent.

#### D. Creation of a catalogue of events

This step consists in proposing a global view of what happened during every test to the reader through the perception of the microphones. We had to manage:

- 1) The detection of events according to the signal-to-noise ratio,

<sup>3</sup>The TOP is the instant chosen by experimentalists to be the reference of the beginning of the test

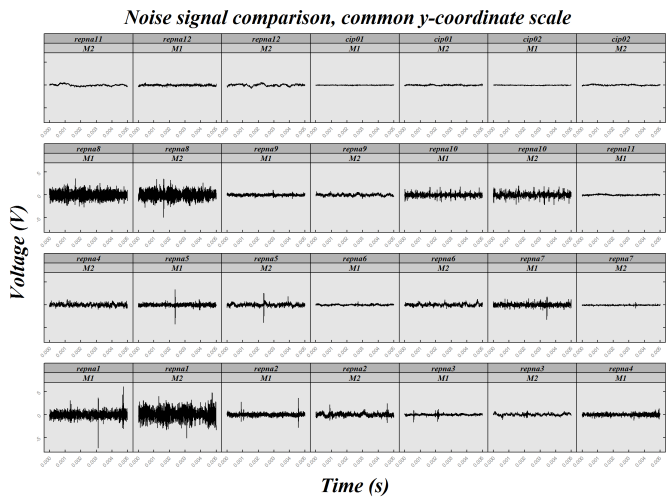


Figure 3: Noise signal on the two microphones for every studied test

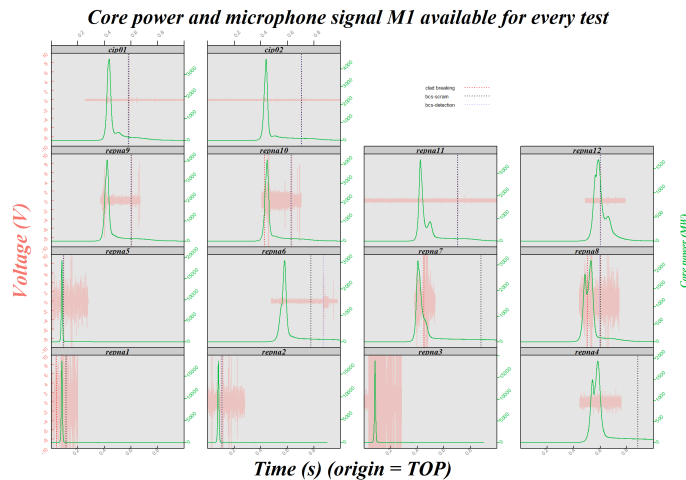


Figure 4: Core power and microphone signal available for every studied CABRI test

- 2) The storage of the events in a Relational Database,
- 3) The extraction of the events to propose an visualization.

To detect an event, we used a sequential analysis technique based on the moving variance of the signal. To decide the beginning and the end of an event we define a threshold from a learning set of values characteristic of the background noise (see figure 5). The algorithm is a little more complicated since we have to take into account the two microphones in the same time for the choice of the values  $t_1$  and  $t_2$ . After detection, we store the values of the two microphones and the values<sup>4</sup> of two types of flowmeters and pressure transducers. Finally, an event is defined by the signals of eight physical quantities.

There are presently stored in the database around one hundred events detected over the fourteen tests. The

<sup>4</sup>As the microphones, the flowmeters and the pressure transducers are placed downstream and upstream from the test cell.

The event detection is based on moving variance evolution

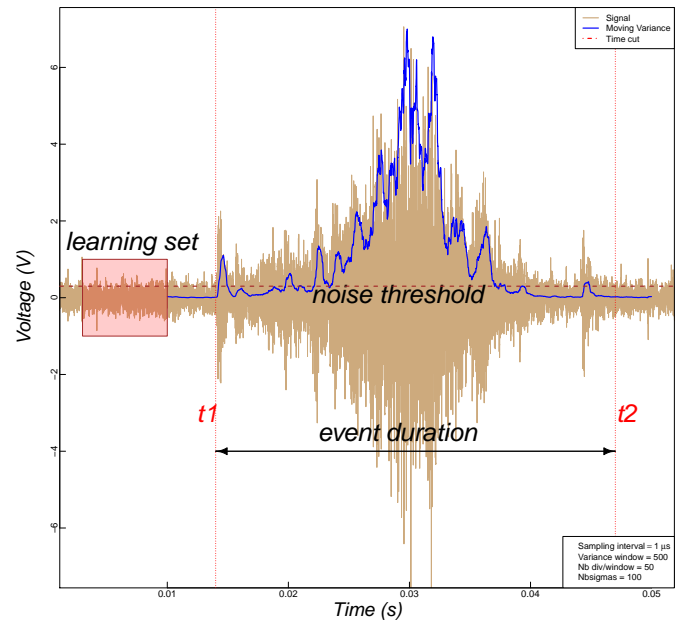


Figure 5: Methodology used for the detection of an event

graphs of all events are inserted in the final report (see figure 6 for the visualization of the event used to illustrate the detection methodology).

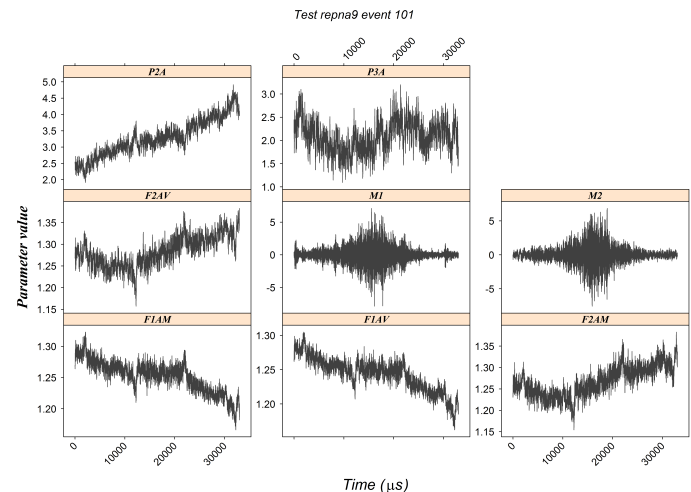


Figure 6: Every event is characterized by signal of several sensors

### E. Pre-analysis

Once we completed the cleaning and the visualization of the data, we did the pre-analysis of the data which corresponds in fact to finding once again the results presented in the old technical report. This work consists in doing a descriptive analysis of the signals both in the time and frequency fields. Every event, we associated on the same graph (see figure 7):

- The value in time of the two microphones, the pressure transducers and the flowmeters,
- The autocorrelation function,
- The partial autocorrelation function,
- The smoothed periodogram,
- The raw spectrum,
- The short-time Fourier Transformation.

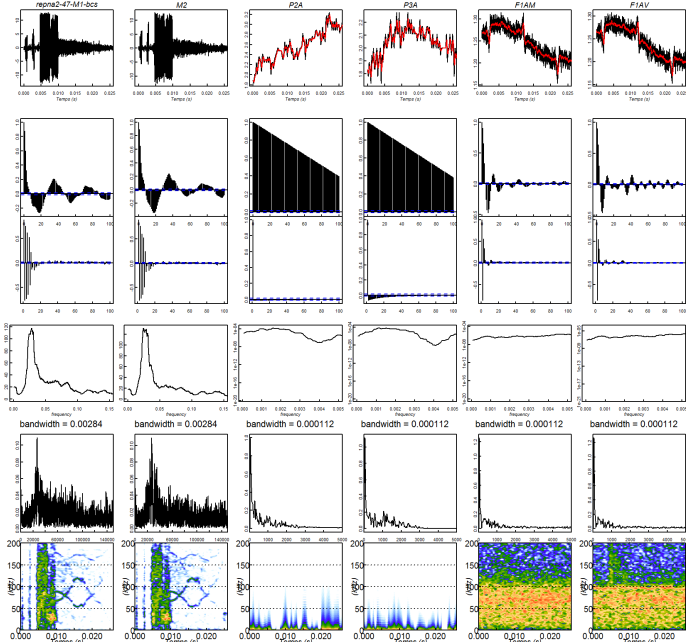


Figure 7: Time and spectral analysis for every event

Some specific signatures can be highlighted. That is the case for the events pertaining to the test shutdowns as shown on the short-time Fourier Transform in the bottom left corner of the figure 7. All these graphs are included in the final report. Here again, the Literate Programming offers a means to track the process precisely since we can keep the information about the methodology used to do the smoothing of the periodogram and the choice of parameters.

#### F. Statistical model

This section is about statistical modeling. This is the first time we have performed this task on our data. It is in fact the beginning of our ambition to carry out further investigations about the understanding of the physical phenomena appearing during the transient. For the moment, the analysis has to be considered always as a part of tools to look at the data in order to have a better comprehension of our events.

So far, we observed the events only in the spectral domain. Each of them is manipulated through its smoothed periodogram [12]. This one is divided in several bins as shown in figure 8 to create a vector with as many coordinates as number of bins. The figure 8 is an example with fifty bins but we took one thousand bins on the real data. Then, we performed a Correspondence Analysis [13]

to perform a dimensionality reduction. In term of variability, this methodology allows us to define several new vectors, called factors, which retain a large part of the total variance from the initial space composed by the one thousand dimensions. In our case, we can work with ten factors to represent around eighty percent of the total variance.

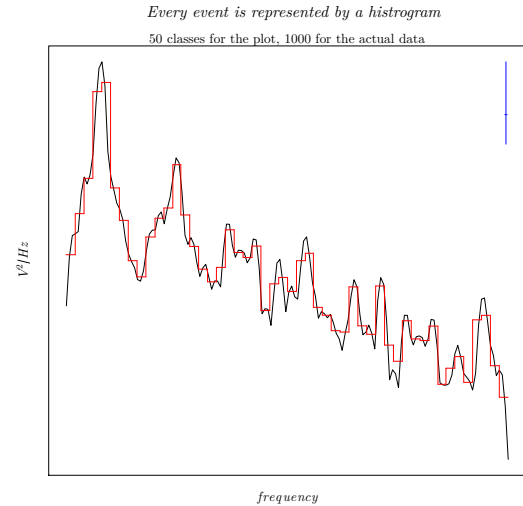


Figure 8: Methodology used for the detection of an event

Then, a hierarchical clustering [14] on these selected factors allows us to highlight twelve classes (see figure 9) typifying the shapes of periodograms (see figure 10).

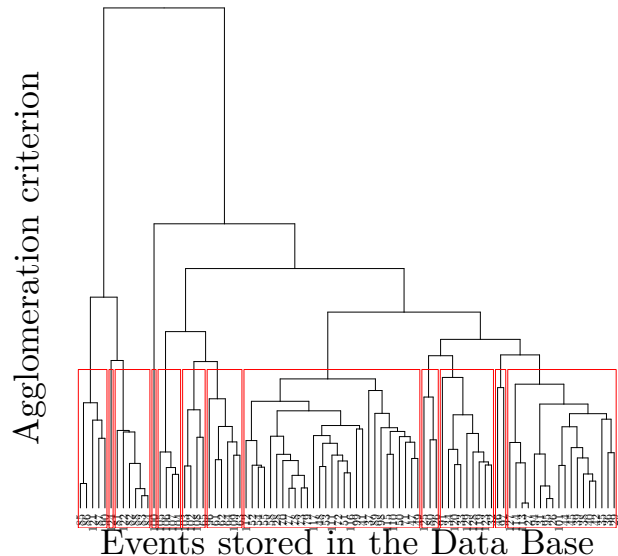


Figure 9: The dendrogram

At this step, it would be possible to try to answer some questions such as, for example: "is there a relationship

between the core power average during an event and its frequency distribution". We begin to create a dependent variable, that is to say a vector whose coordinates are the calculation of the core power mean value for each event (see red line in figure 11a). And we do a multiple linear regression, the independent variables being the selected factors 11b.

The previous analysis concluded that there is no statistical relationship. In fact, there are some troubles in our data. For some classes, periodogram shapes point out the fact that we should have taken into account the low frequencies of the background noise for some tests (see figure 10 in the top left corner). Also, it would be better to work on the energy average instead of working on the core power average. In fact we must continue to prepare

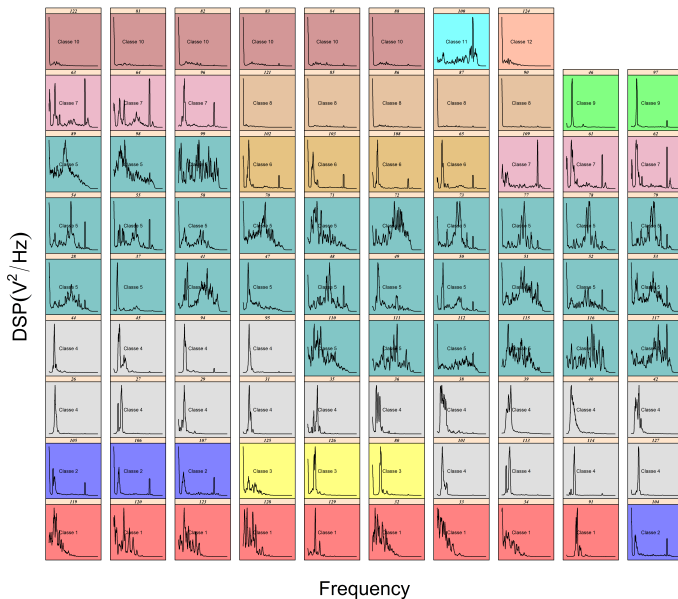
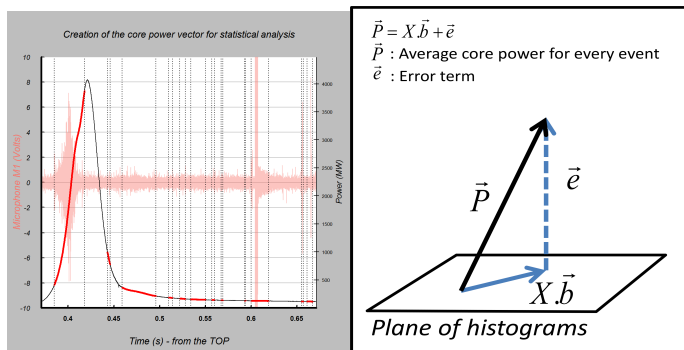


Figure 10: The different shapes of periodograms



(a) Creation of the independent variable

(b) Multiple linear model

Figure 11: Questioning a linear relationship between the spectral contents and the average of the core power for each event

the data and then we enter into the cycle of iteration.

## V. ITERATION

There are many reasons why we are obliged to return on the data processing:

- The initial raw data can change. During the data processing, we have to do physical assumptions which may be wrong,
- Change in the choices of the delay for dates in updating,
- The abrupt changes detection algorithm can be improved, creating different events which would have a stronger physical meaning,
- According to the modifications of the previous steps, we must be able to empty and populate the database with the new ones,
- The parameters can be set according to different points of view leading to a trade-off,
- The background noise was not taken into account.

Using scripting languages rather than point-and-click to prepare the data and generate the final report, reconstruction of results will then take only a few minutes. At every iteration, the coherence can be checked easily thanks to the global vision.

As explained in § II-B, all the tasks listed so far are placed in code chunks of the noweb file. But some of them can be time-consuming and we don't want to repeat these tasks at every rerun. This situation is taken into account through the possibility of setting up options for every code chunk. Thus, when evaluating code chunks, we are able not to include some chunks in the global evaluation keeping the results of the previous runs. In order to give an idea of how it actually works, we propose a small example in the next section.

## VI. A SMALL EXAMPLE

We can see on the left side of the figure 12 the contents of a real noweb file which gives after compilation the document shown on the right part. The lines with yellow background mark the beginning of a code chunk. Every code chunk has a name. The @ lines with blue background mark the end of a code chunk and the beginning of a documentation chunk. There is no name for a documentation chunk. We can easily associate the results of the right part with the chunk of the left side. In the chunk "SQL-essais" we first make a request in the Database and then create the table. In the chunk "event-obtain", we access the data relative to event number 101 and we visualize it in the chunk "event-view". In the chunk "analysis", we do the smoothed periodogram calculation. We see that to make the events comparable we chose the spans proportional to the number of samples, thus resolution is identical for all events. In the header of a code chunk, with its name, we can add options as in the chunk "analysis" where we indicate the captions and the size of the figures. If we don't want to evaluate this chunk at the next run, all we have to do is add an option as «analysis, eval=FALSE». This

approach is very flexible and it becomes easy to manage data processing from one file.

- [14] G. Saporta, *Probabilités, analyse des données et statistique*. Editions Technip, 1990.

## VII. CONCLUSION

The object of the work presented in this article was to put into action the strong links between the data, treatments and generation of the final technical report. According to the philosophy of the Literate Programming, the text of the technical document is mixed with the computer code that produces all the printed output such as tables, graphs for the study thereby eliminating the unrealistic point-and-click tasks. This difficulty is not specific to the nuclear field. For many years, researchers have worked out solutions to this mundane issue and presently, new technologies and high-level programming languages offer us actual answers. Applying this paradigm by ourself on our experimental data as explained, we can now say that Literate Programming can indeed become a reality. We have sought to make this article a teaser for experimentalists in encouraging them not to be afraid by the data driven analysis. From this work, we hope next time to be able to deduce interesting physical results.

## ACKNOWLEDGMENT

The authors would like to thank the R core team and contributors for the creation and development of the R language and environment [5], which intelligently modified our way of doing experimental data processing.

## REFERENCES

- [1] D. E. Knuth, "Literate programming," *Compt. J.*, vol. 27, no. 2, pp. 97–111, 1984.
- [2] —, *The TeXbook*. Addison-Wesley, 1984.
- [3] —, "The WEB system of structured documentation," Stanford University, Stanford, CA, Stanford Computer Science Report CS980, Sep. 1983.
- [4] N. Ramsey, "Literate programming simplified," *IEEE Softw.*, vol. 11, no. 5, pp. 97–105, Sep. 1994. [Online]. Available: <http://dx.doi.org/10.1109/52.311070>
- [5] R Core Team, *R: A Language and Environment for Statistical Computing*, R Foundation for Statistical Computing, Vienna, Austria, 2014. [Online]. Available: <http://www.R-project.org/>
- [6] F. Leisch, "Sweave and beyond: Computations on text documents," in *Proceedings of the 3rd International Workshop on Distributed Statistical Computing, Vienna, Austria*, K. Hornik, F. Leisch, and A. Zeileis, Eds., 2003, ISSN 1609-395X. [Online]. Available: <http://www.R-project.org/conferences/DSC-2003/Proceedings/>
- [7] Y. Xie, *knitr: A General-Purpose Package for Dynamic Report Generation in R*, 2015, r package version 1.9. [Online]. Available: <http://yihui.name/knitr/>
- [8] J. C. Faria, *Resources of Tinn-R GUI/Editor for R Environment.*, UESC, Ilheus, Bahia, Brasil, 2012.
- [9] RStudio Team, *RStudio: Integrated Development Environment for R*, Boston, 2012. [Online]. Available: <http://www.rstudio.com/>
- [10] R. M. Stallman, "Emacs the extensible, customizable self-documenting display editor," *ACM SIGOA Newsletter*, vol. 2, no. 1-2, pp. 147–156, Apr. 1981. [Online]. Available: <http://doi.acm.org/10.1145/1159890.806466>
- [11] S. Chacon, *Pro Git*. Apress, 2009.
- [12] P. Bloomfield, *Fourier Analysis of Time Series*, J. WILEY and I. Sons, Eds. John WILEY and Sons, INC, 2000.
- [13] J. Benzécri, *L'analyse des données: L'analyse des correspondances*, ser. L'analyse des données: leçons sur l'analyse factorielle et la reconnaissance des formes et travaux. Dunod, 1973.



```

d:/data/users/illustration-article-LP/illustration-LP.nrw
File Edit Options Buffers Tools Menu-R ESS Noweb Hide/Show Outline Help
1 illustration-LP.nrw
2 \documentclass[4paper,12pt]{article}
3 \usepackage{ansinew}[inputenc]
4 \usepackage{cyr}{aeguill}
5 \usepackage{modern} % warning : after package aeguill
6 \usepackage{space}
7 \usepackage{frenchb,english}{babel}
8 \usepackage{float}
9 \usepackage{subcaption}
10 \usepackage{graphicx}
11 \usepackage{subfloat}[2][need a sub-caption]{subcaptionbox}{#1}{#2}
12 \title{A small example to understand how it works}
13 \author{Laurent Pantera}
14 \begin{document}
15 \maketitle
16 <<caption-hmttr,include=FALSE>>
17 \opts_chunkset{fig.width=4,fig.height=3,fig.align='center',
18 \par=TRUE,echo=FALSE,fig.pos='H',out.width='21in'}
19 \knit_hooks$set(par=function(before
20 \options,envir){
21 if(before) par(mgp=c(1,0,1,0),mar=c(3,3,3,3),las=1,tck=0.01,cex.axis=0.8)
22 })
23
24 <<libraries,eval=TRUE>>
25 library(RJDBC)
26 library(xtable)
27 library(lattice)
28
29
30
31 <<Variables>>
32 ## there are a test database and a production database
33 CHOIX.BASE <- "connlocalPostgreSV9sur6543"
34
35 \section{Introduction}
36 Here is a small example using some functions written for our
37 application which allows the reader to understand how it works. It has
38 been showed-\cite{Doderlein1999-07} the interest to realize temporal
39 and spectral analyses on the Emission Acoustic signals by showing the
40 existence of signatures which can be correlated with physical
41 phenomena as the rod cladding failure or the test shutdown (i.e.
42 scram). So we want to return to the data to consolidate the analysis
43 and do further investigation if possible.
44 <<DataBase-Connection,eval=TRUE>>
45 drv <- JDBC("sun.jdbc.odbc.JdbcOdbcDriver",
46 "C:\Program Files\Java\jdk1.7.0_51\jre\lib\rt.jar",
47 "");
48 conn <- dbConnect(drv, "jdbc:odbc:PostgreSV9sur6543")
49
50 \section{Tests characteristics}
51 The Table-\ref{tab:carac-tests} shows the characteristics of the tests
52 stored in the DataBase. We have used this information to clean the
53 data for shifting time values of every signal according to the choice
54 of the lempH[TOP] value (time value defined by the experimentalists as the
55 beginning of the test).
56
57 <<SQL-essais,eval=TRUE,results=asis>>
58 ## sql query creation
59 cmd.sql <- paste(
60 "SELECT nomessai,",
61 " dateessai,",
62 " heureessaitop,",
63 " microsecondestop,",
64 " microsecondestopmax ",
65 "FROM TABESSAI order by dateessai","sep=""")
66 DFessai <- dbGetQuery(conn,cmd.sql)
67 ## tests ordering by date
68 DFessai <- DFessai[order(DFessai[,2],decreasing=TRUE),]
69 print(xtable(DFessai,caption="Selected tests",label="tab:carac-tests",
70 size="tiny",include.rownames=FALSE))
71
72 \section{Visualization of an event}
73 Now, we extract the data for the event 101 from the DataBase and we
74 plot the principal parameters evolution with the two microphone signals.
75 <<Event-101>>
76 num <- 101
77 DFEv.es <- query.ev(CHOIX.BASE,conn,num=num)
78 if(length(row.names(DFev.es))!=0){
79 DF.1 <- lapply(as.list(1:dim(DFev.es)[1]),
80 FUN = function(x) DFev.es[x[1],])
81 DF.1 <- lapply(DF.1,FUN = applysplitdata)
82 DF.m <- do.call(rbind,DF.1)
83 }
84
85 <<event-view,fig.height=10,fig.cap='An event is characterized by sev
86 eral parameters',fig.width=10,out.height='10cm',out.width='10cm'>>
87 coll <- "grey5"
88 even.gr <- trace.ev.essai(DF.m,coll=coll)
89 print(even.gr)
90
91 We now are extract only the values of the microphone M1 signal
92 evolution vs. time-\(\textit{see-figure-\ref{fig:analysis1}}\). This
93 signal has been used to illustrate the algorithm of events creation
94 showed at the top of this poster.
95 <<microphone-M1,fig.cap='Microphone signal - event 101'>>
96 ## microphone M1 data extraction
97 df.m1 <- subset(DF.m, as.character(memo) == "M1")[,c("Temps","value")]
98 mlx <- df.m1$value
99
100 We then do the spectral analysis of this event according to the M1
101 signal-\(\textit{see-figure-\ref{fig:analysis2}}\). For smoothing the
102 periodogram, we chose the width of the windows proportional to the
103 number of samples in order to take into account the different duration
104 between events.
105
106 <<analysis,fig.cap='Event 101',fig.subcap=c('Time evolution','Spect
107 ral analysis'),out.width='49\linewidth'>>
108 ## temporal event visualization
109 with(df.m1,plot(Temps,value,ylab=expression(italic('Voltage')),
110 main=expression(italic('Microphone M1 signal')),
111 xlab=expression(italic(paste("Time ("",mu"s,""),sep=""))),
112 type="l"))
113 ## to make the events comparable we chose the spans
114 ## proportional to the number of samples
115 my.spans <- length(mlx.f)*0.01
116 gxy <- spec.pgram(mlx.f,spans=my.spans,plot=T,
117 ylab=expression(italic('V^2/Hz')),
118 main=expression(italic('Smoothed periodogram')),
119 sub=as.expression(boucle(italic(bandwidth)=.signif(gxy$bandwidth,3))))),
120 xlab=expression(italic(frequency)),log="no")
121
122 Finally, to do citation, experimentalists use the shared
123 bibliography of the LPRE Laboratory which is in versionning control in
124 a \a{git} repository.
125
126 % french presentation
127 \bibliographystyle{plain-fr}
128 % use of the LPRE Laboratory bibliography
129 \bibliography{./bibliographie/lpre}
130 \end{document}

```

A small example to understand how it works

Laurent Pantera

March 20, 2015

## 1 Introduction

Here is a small example using some functions written for our application which allows the reader to understand how it works. It has been showed [1] the interest to realize temporal and spectral analyses on the Emission Acoustic signals by showing the existence of signatures which can be correlated with physical phenomena as the rod cladding failure or the test shutdown (i.e. *scram*). So we want to return to the data to consolidate the analysis and do further investigation if possible.

## 2 Tests characteristics

The Table 1 shows the characteristics of the tests stored in the DataBase. We have used this information to clean the data for shifting time values of every signal according to the choice of the *TOP* value (time value defined by the experimentalists as the beginning of the test).

nomessai	dateessai	heureessaitop	microsecondestop	microsecondestopmax
cip01	2002-11-29	17:09:00	243000.00	0.44
cip02	2002-11-08	16:52:00	256000.00	0.44
repna12	2000-12-07	17:11:00	271000.00	0.59
repna11	2000-06-21	15:24:59	873000.00	0.42
repna10	1998-07-30	16:29:59	861000.00	0.45
repna8	1997-07-10	15:20:00	192000.00	0.53
repna9	1997-04-25	14:34:00	224000.00	0.42
repna7	1997-01-24	15:04:00	41000.00	0.40
repna6	1996-03-01	15:53:00	264000.00	0.58
repna4	1995-07-28	16:48:00	101000.00	0.58
repna5	1995-05-05	15:54:01	145000.00	0.08
repna3	1994-10-06	18:20:00	986000.00	0.08
repna2	1994-06-10	17:53:00	92000.00	0.08
repna1	1993-11-10	15:13:00	807000.00	0.08

Table 1 – Selected tests

## 3 Visualization of an event

Now, we extract the data for the event 101 from the DataBase and we plot the principal parameters evolution with the two microphone signals.

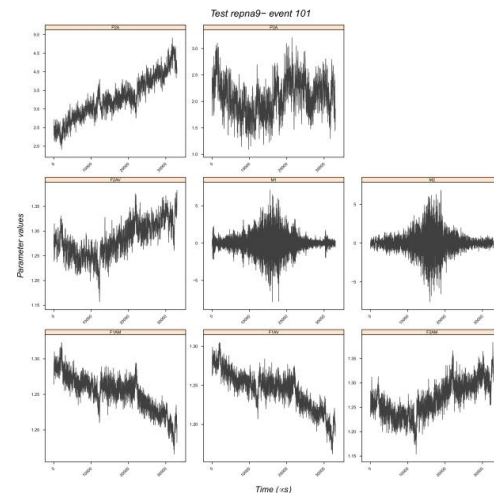


Figure 1 – An event is characterized by several parameters

We now are extract only the values of the microphone M1 signal evolution vs. time (see figure 2a). This signal has been used to illustrate the algorithm of events creation showed at the top of this poster.

We then do the spectral analysis of this event according to the M1 signal (see figure 2b). For smoothing the periodogram, we chose the width of the windows proportional to the number of samples in order to take into account the different duration between events.

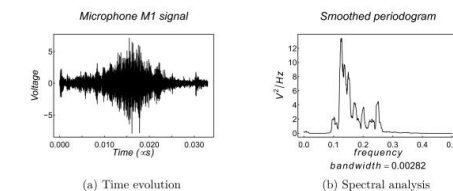


Figure 2 – Event 101

Finally, to do citation, experimentalists use the shared bibliography of the LPRE Laboratory which is in versionning control in a [\a{git}](#) repository.

## References

- [1] C. DÖDERLEIN et C. HÉE : Analyse de signaux microphones enregistrés lors des essais REP-Na. Rapport technique NT LEAC 31/99, CEA, 1999.