



HAL
open science

Issues and advances of calibration transfer in LIBS

J.-B. Sirven, J. Picard, C. Maury, M. El Rakwe

► **To cite this version:**

J.-B. Sirven, J. Picard, C. Maury, M. El Rakwe. Issues and advances of calibration transfer in LIBS. SciX 2015, Sep 2015, Providence, United States. cea-02491618

HAL Id: cea-02491618

<https://cea.hal.science/cea-02491618v1>

Submitted on 26 Feb 2020

HAL is a multi-disciplinary open access archive for the deposit and dissemination of scientific research documents, whether they are published or not. The documents may come from teaching and research institutions in France or abroad, or from public or private research centers.

L'archive ouverte pluridisciplinaire **HAL**, est destinée au dépôt et à la diffusion de documents scientifiques de niveau recherche, publiés ou non, émanant des établissements d'enseignement et de recherche français ou étrangers, des laboratoires publics ou privés.

FROM RESEARCH TO INDUSTRY

cea den

ISSUES AND ADVANCES OF CALIBRATION TRANSFER IN LIBS

J.-B. Sirven, J. Picard, C. Maury, M. El Rakwe

CEA, Nuclear Energy Division, Department of Physical Chemistry

F-91191 Gif sur Yvette, France

jean-baptiste.sirven@cea.fr

SciX 2015, Sept. 27 – Oct. 2, 2015, Providence, RI

LIBS is an **onsite / online / in situ** analytical technique

“exotic” applications

**lack of
reference
materials**

**analytical
development
in conditions
different
from the real
ones**

**variable
measuring
conditions**

**no
standard
protocol**

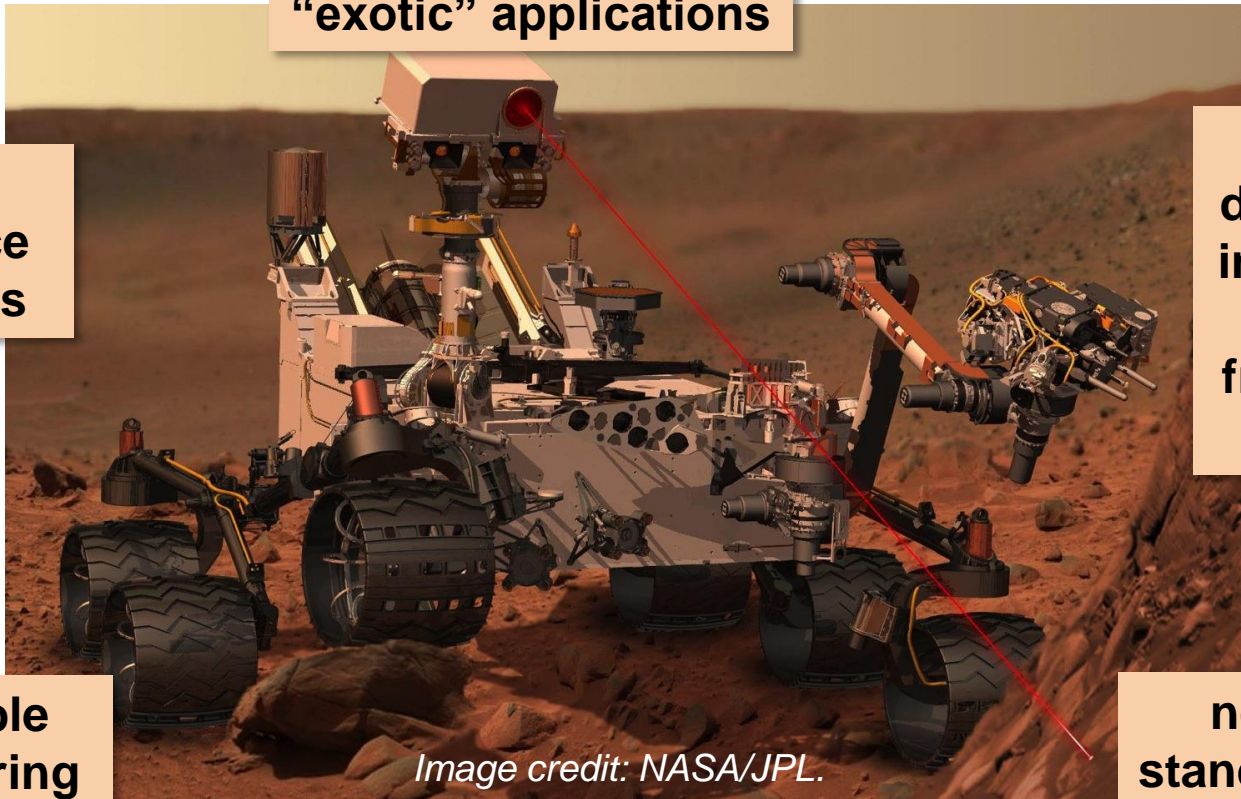
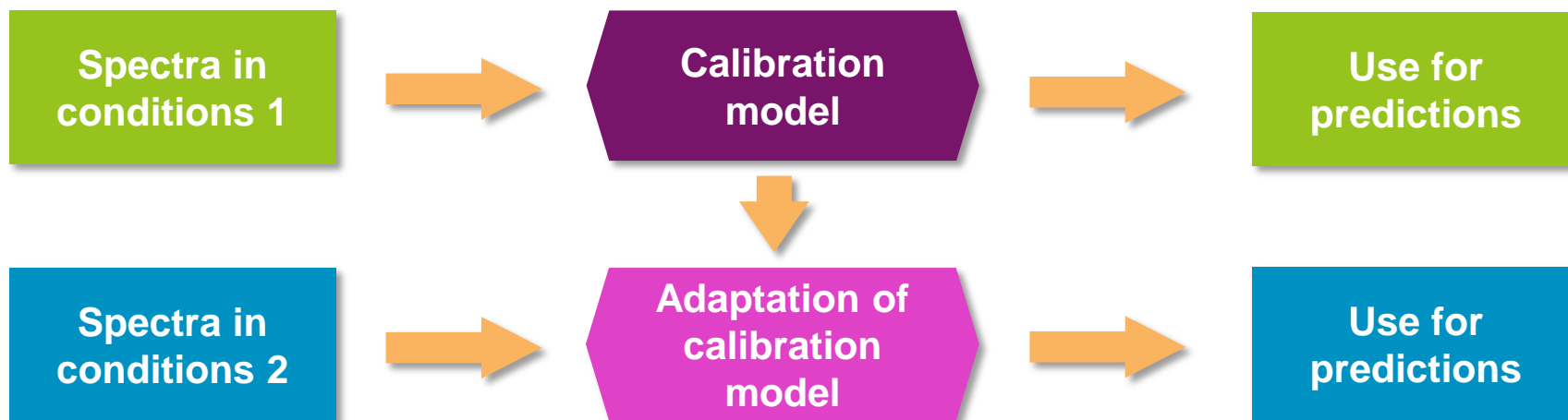
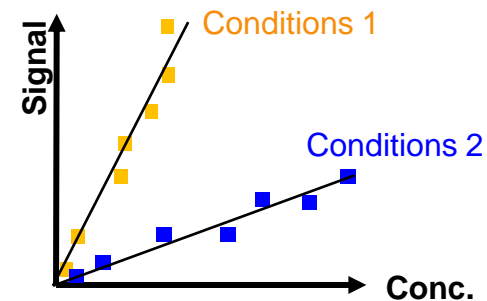


Image credit: NASA/JPL.

→ Are we able to switch from a calibration model to another one
obtained in different conditions?

Transfer of a calibration model in different conditions

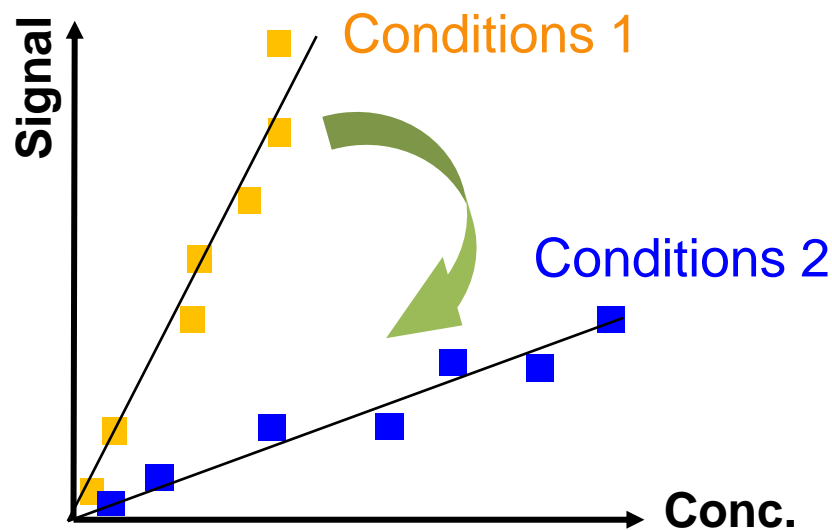
- A different spectral line
- A different element
- A different matrix
- Different measuring conditions
- A different instrument (like in NIRS)



To date, only 2 papers explicitly dealing with calibration transfer in LIBS:

- Lopez-Moreno et al., J. Anal. At. Spectrom. 20 (2005) 1275–12794
- Boucher et al., SciX 2015, abstract #287

When making calibrations **lines**, this is equivalent to making a **slope correction**



→ What does the slopes ratio mean?

→ Can we predict it?

→ Are there cases where slopes are equal?

The well-known **Boltzmann equation**:

analyte concentration

ablated mass
(depends on the matrix)

spectroscopic data
(depend on the analyte and on the spectral line)

$$I_{ij} = F_{exp} \times C m_0 \times \frac{hc}{\lambda} \times \frac{g_i A_{ij}}{Z(T_{exc})} e^{-E_i/kT_{exc}} = a \times C$$

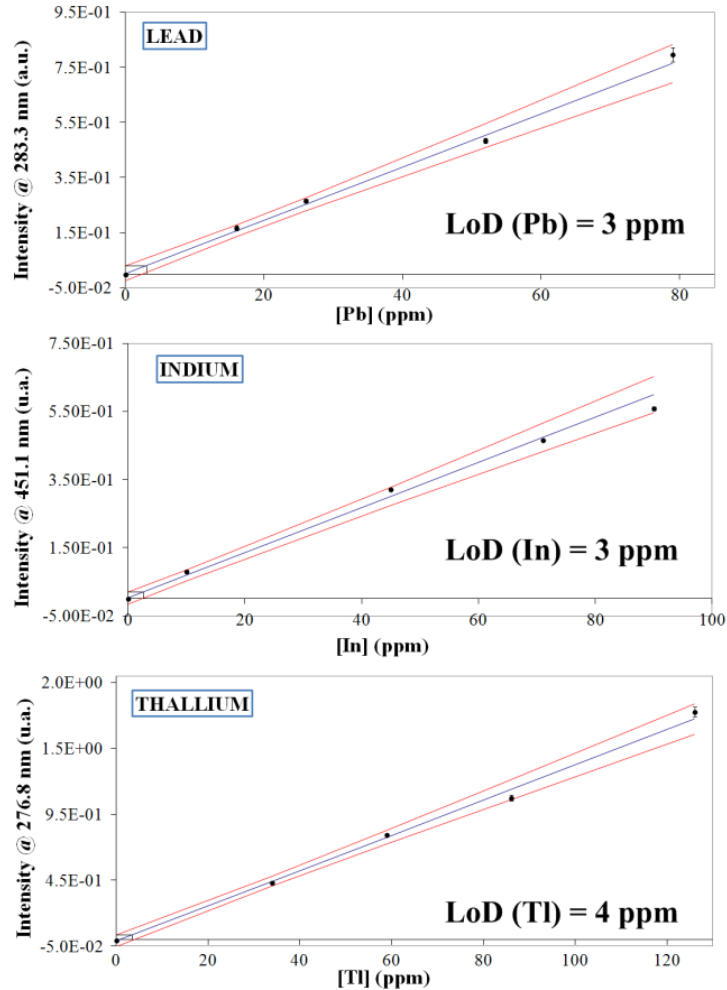
experimental factor (depends on the geometry and efficiency of the plasma emission collection setup, on the matrix, and on time)

electron temperature
(depends on the matrix and on time)

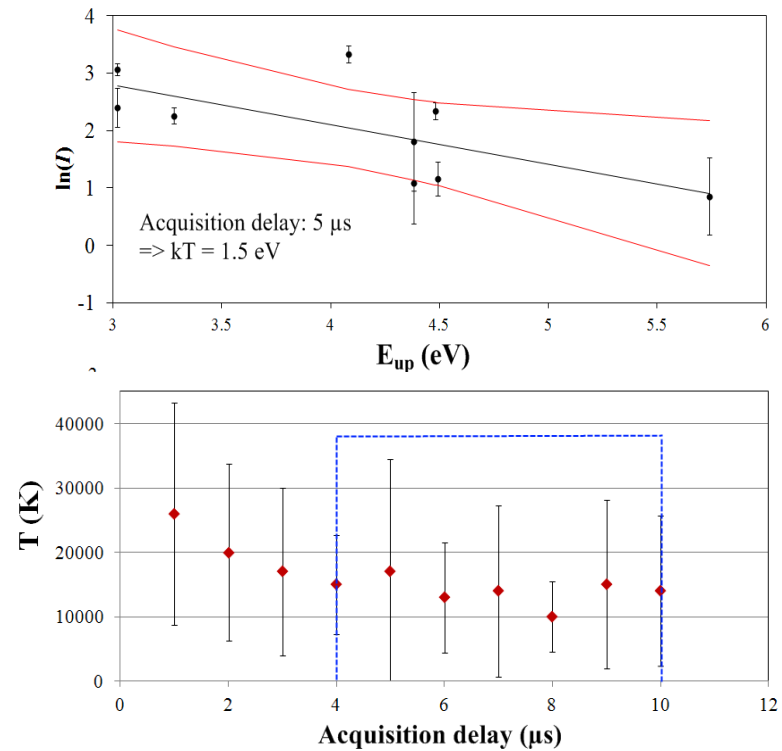
(for given experimental and measuring conditions)

Gate delay 4 μ s, gate width 6 μ s, 4000 laser shots

Calibration of metal impurities concentration (Pb, In, Tl) in liquid sodium

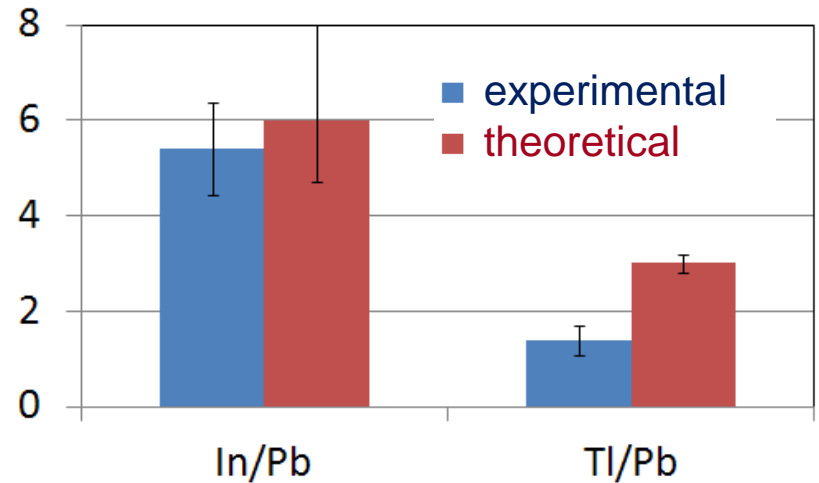


Determination of $T_e(t)$ by a **multi-elemental Boltzmann plot** based on trace element lines:



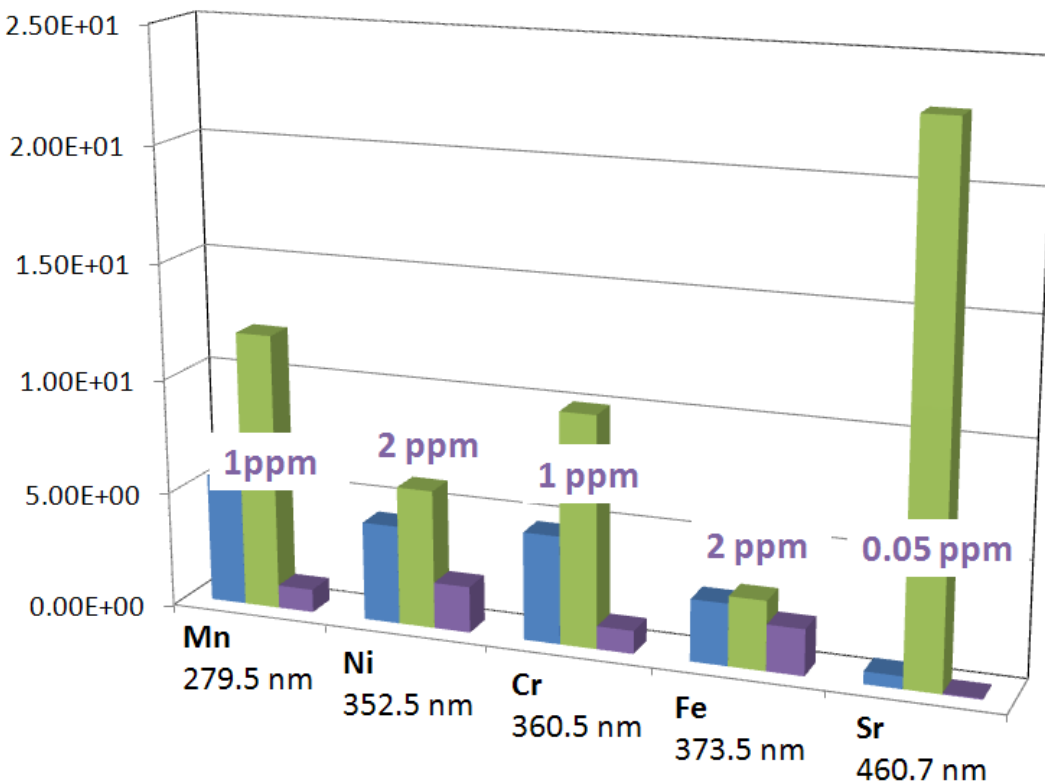
Calibration lines slopes ratio:

Application to the **extrapolation of detection limits** of elements of interest in a given matrix:



The error bars take into account the uncertainty on T_e

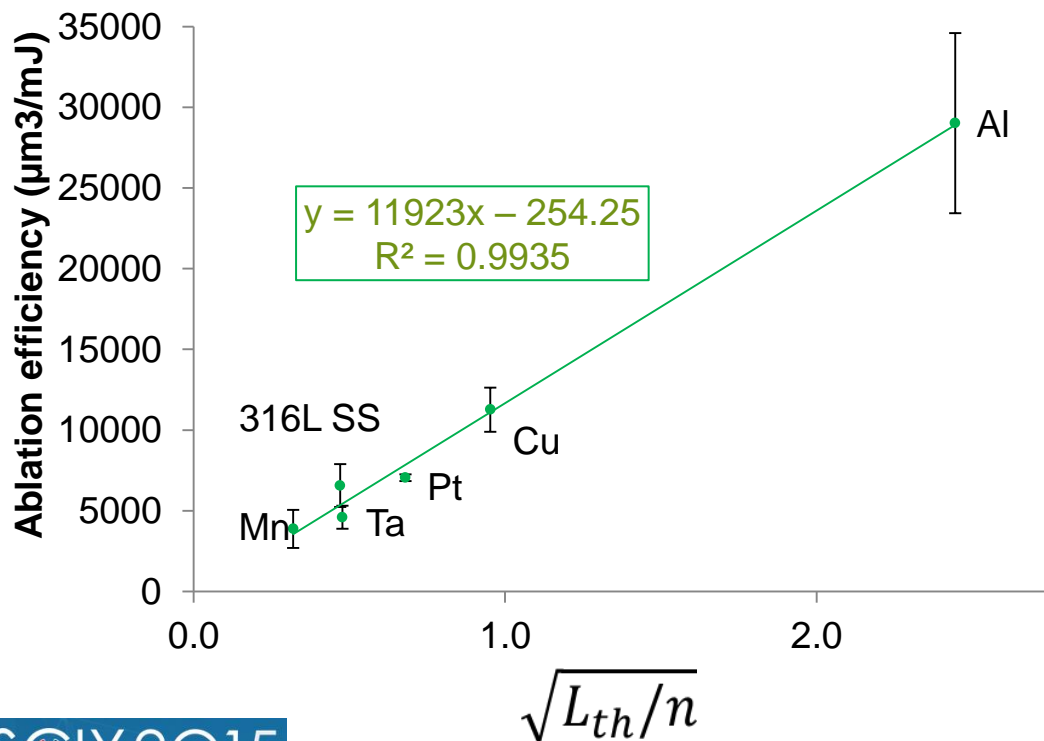
- Background noise (measured experimentally on a blank) ($\times 10^{-6}$)
- Slopes ratio (wrt Pb)
- Predicted detection limit (ppm)



Experiment:

- Samples: several pure metals and one alloy (Mn, 316L Stainless Steel, Ta, Pt, Al, Cu)
- 10 laser shots at 1 bar, 266 nm, irradiance 0-50 GW/cm² (linear regime)
- The ablation efficiency is the slope of the line Volume = f(Pulse energy)

Empirical model between ablation efficiency and physical properties of metals



With :

$L_{th} = 2 \cdot \sqrt{D_{th} \cdot \tau}$: thermal diffusion length

D_{th} : thermal diffusivity

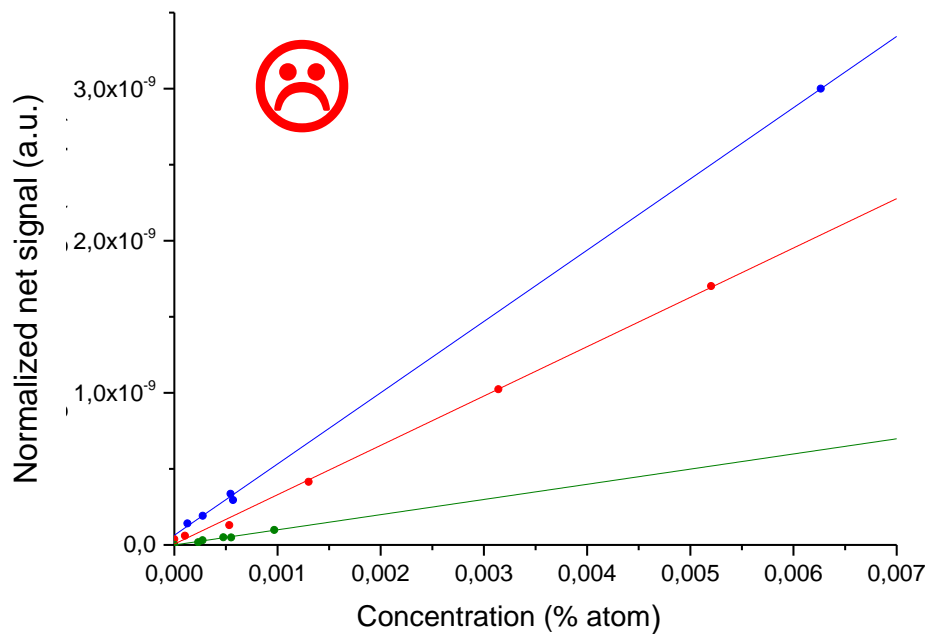
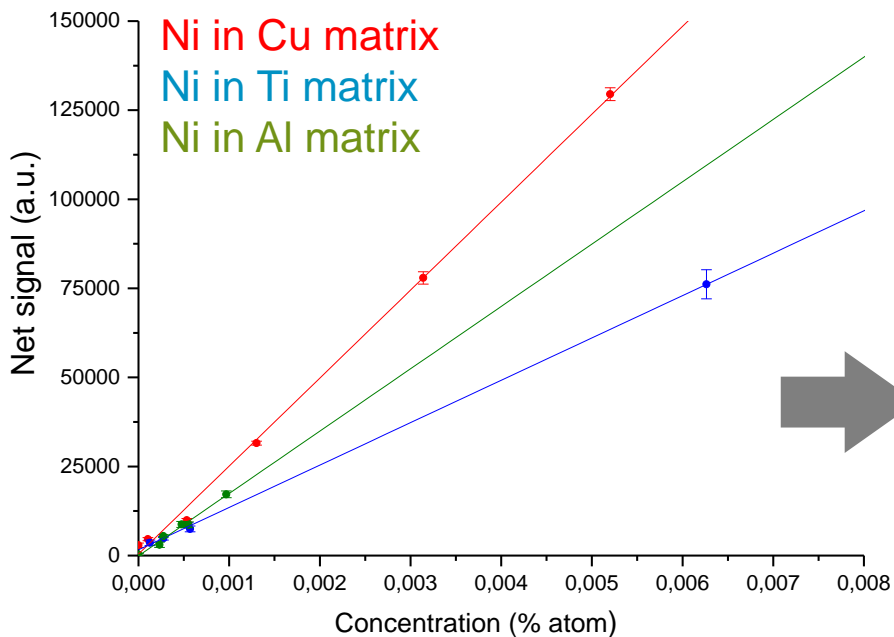
τ : pulse duration

n : real part of the refractive index

Very nice correlation between ablation efficiency and some physical parameters of metals...

... but not clearly explained...

Normalization of calibration lines by the ablation efficiency



The plasma temperature?

→ Intensity ratio for lines of different upper level energy:

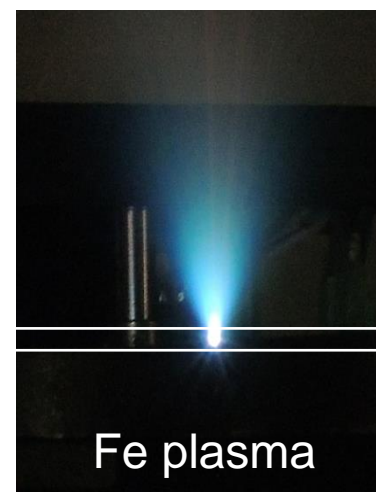
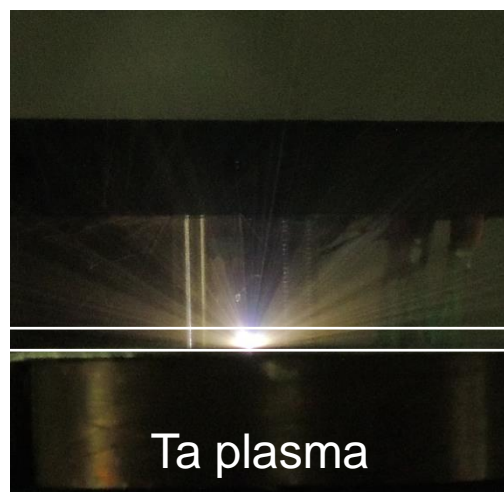
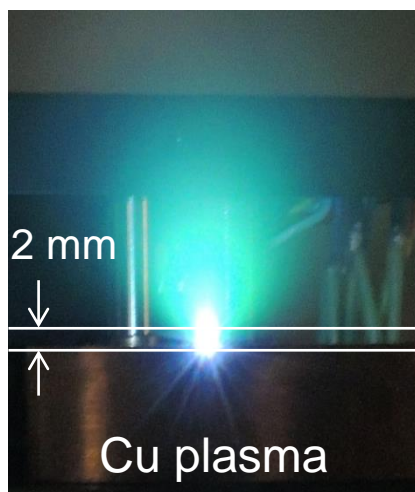
Matrix	Cu	Ti	Al
Ni lines ratio $I_{231,6}/I_{230,3}$	1,3	1,4	1,3
Fe lines ratio $I_{239,56}/I_{238,2}$	0,78	0,77	0,79

No significant difference

Not that surprising, see e.g. Aguilera et al., Spectrochimica Acta Part B 64 (2009) 993–998:

Matrix	T (K)	N_e (10^{17} cm^{-3})	NI (10^{20} m^{-2})	βA (a.u.)
Ni	$11,500 \pm 200$	0.58 ± 0.02	1.8 ± 0.2	91 ± 4
Cu	$12,100 \pm 200$	0.55 ± 0.05	1.9 ± 0.1	71 ± 3
Al	$11,700 \pm 200$	0.66 ± 0.05	2.7 ± 0.5	70 ± 4

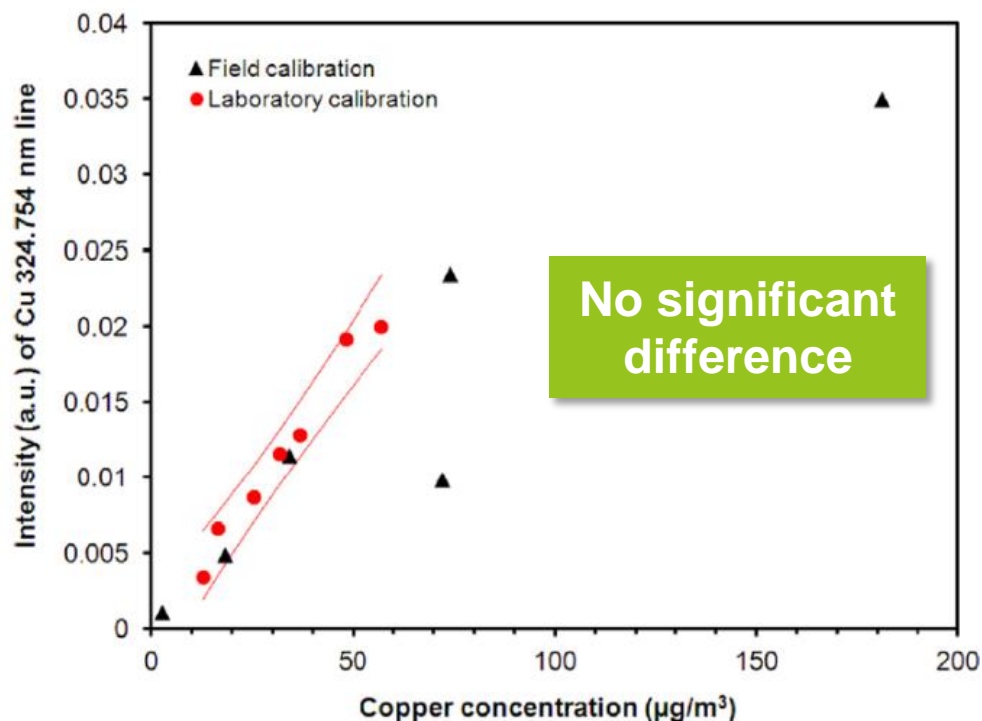
What about the plasma / spectrometer coupling?



TBC...

Red: calibration in laboratory of Cu concentration in an aerosol of CuSO_4 micrometric particles

Black: in situ calibration, several months after, with the same instrument, on the exhaust duct of a melting furnace → metal particles of various composition (Cu, Al, Ca, Ti, K...)

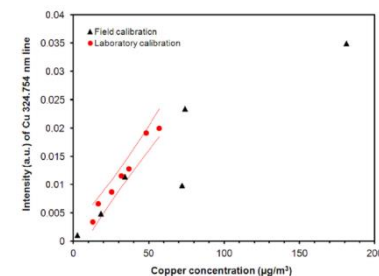
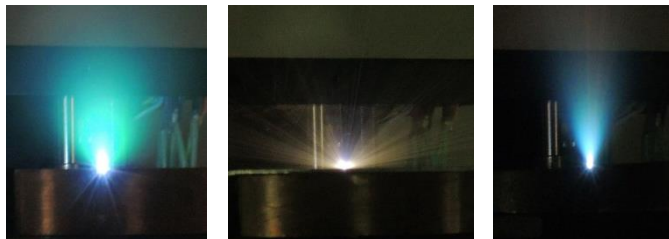
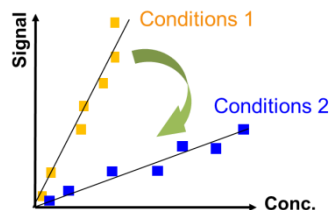


Dutouquet et al., *Talanta* 127 (2014) 75–81

Calibration transfer approaches are particularly relevant for analytical development of an **in situ** measuring system

To a large extent, in LIBS this issue overlaps with that of **matrix effects**

A fundamental approach of the question is necessary, but **more operational multivariate tools** (NIRS inspired) can prove efficient and shall be tested and adapted



Special thanks to:

Danièle Cardona
Christophe Dutouquet
Guillaume Gallou
Jean-Charles Hubinois
Patrick Mauchien
Olivier Musset


Thank you for your attention!

jean-baptiste.sirven@cea.fr

Commissariat à l'énergie atomique et aux énergies alternatives
Centre de Saclay | 91191 Gif-sur-Yvette Cedex
T. +33 (0)1 69 08 43 71

Etablissement public à caractère industriel et commercial | RCS Paris B 775 685 019

DEN
DANS
DPC
SEARS
LANIE



LIBS

2016

From laser plasmas to analyses

FRANCE



Chamonix-Mont-Blanc
September 12 - 16

9th International Conference on Laser-Induced Breakdown Spectroscopy

www.libs2016-france.org



Welcome



CHAMONIX
MONT-BLANC



As a fast, direct and remote technique, laser-induced breakdown spectroscopy is particularly relevant for online or in situ analysis, or to measure samples with limited access, like in the nuclear sector or in planetary exploration. In these cases, quantitative analysis can be difficult for different reasons. First, environmental conditions are not completely controlled and instrumental drifts may occur. Secondly, matrix-matched calibration samples are not always available. Thirdly, the samples matrix is known to a certain extent, with a possible high variability that can induce unexpected spectral interferences. In addition, due to practical or cost constraints, feasibility studies are frequently performed on matrices and/or analytes and/or experimental conditions other than that of interest, and the question of analytical performances that would be obtained in the real situation is raised.

Calibration transfer could be helpful to cope with those issues. In the field of NIR spectroscopy, where it is widely studied, this concept generally relates to the use of a multivariate calibration model obtained with an instrument to predict samples measured with another instrument. In LIBS, this definition is somewhat restrictive and can be broadened in different ways. Thus, we could consider transferring a calibration from one matrix to another, which is equivalent to compensating for matrix effects. But it can also be related to the calibration transfer for a given matrix from one element to another, or for a given element, from one line to another. Furthermore, a change in experimental conditions can also be dealt with by calibration transfer approaches.

In this talk we will review the interest of calibration transfer in LIBS as well as the existing works on the subject. Recent results obtained in our laboratory will be presented to illustrate the different definitions of calibration transfer given above. Issues and perspectives of such approaches will be discussed.