



HAL
open science

Oxidation of a cold-worked 316L stainless steel in pressurized water reactor primary water environment

M. Maisonneuve, C. Duhamel, C. Guerre, J. Crepin, I. de Curieres, L. Verchere

► **To cite this version:**

M. Maisonneuve, C. Duhamel, C. Guerre, J. Crepin, I. de Curieres, et al.. Oxidation of a cold-worked 316L stainless steel in pressurized water reactor primary water environment. EUROCORR 2017, Sep 2017, Prague, Czech Republic. cea-02434524

HAL Id: cea-02434524

<https://cea.hal.science/cea-02434524>

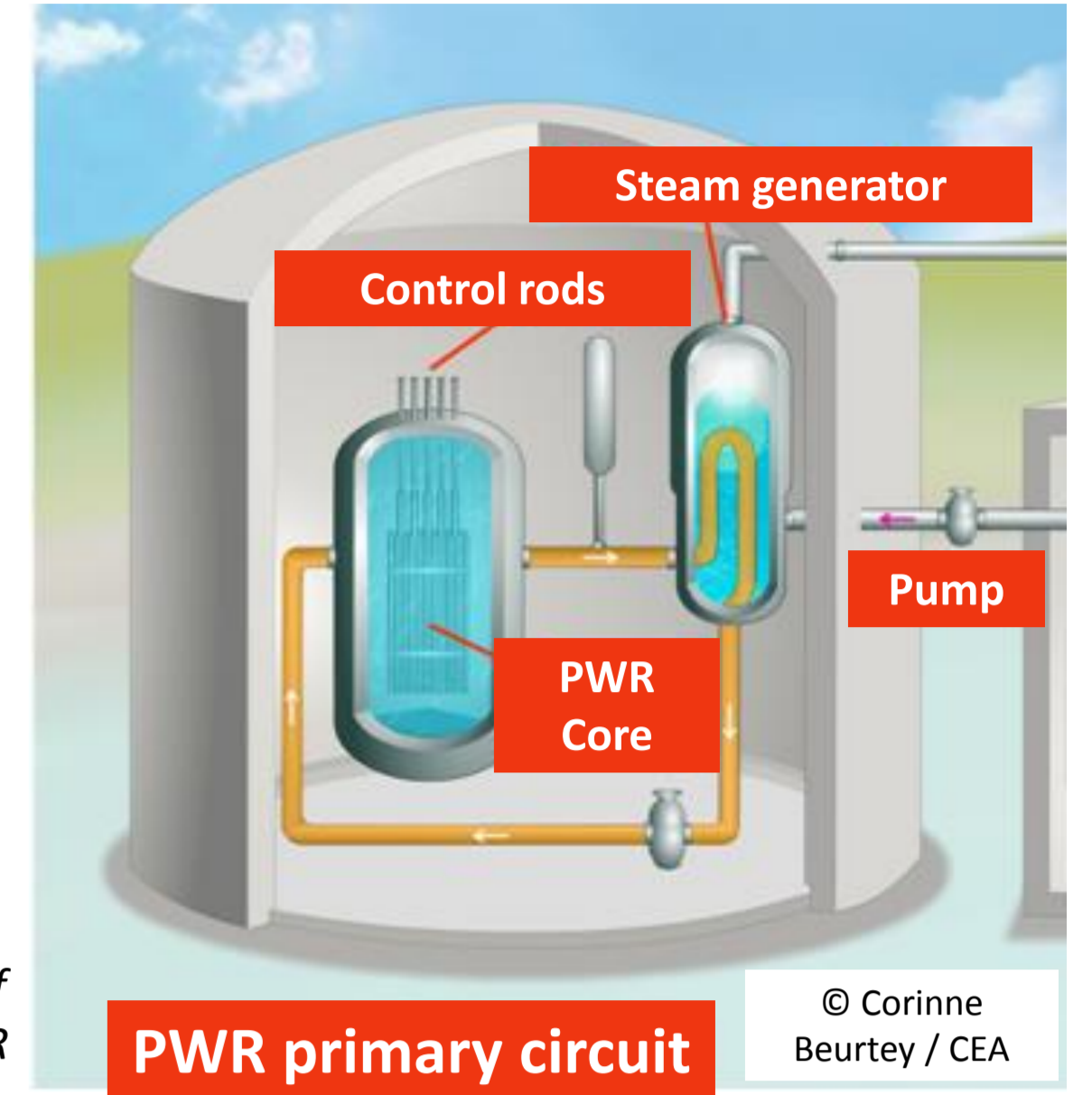
Submitted on 10 Jan 2020

HAL is a multi-disciplinary open access archive for the deposit and dissemination of scientific research documents, whether they are published or not. The documents may come from teaching and research institutions in France or abroad, or from public or private research centers.

L'archive ouverte pluridisciplinaire **HAL**, est destinée au dépôt et à la diffusion de documents scientifiques de niveau recherche, publiés ou non, émanant des établissements d'enseignement et de recherche français ou étrangers, des laboratoires publics ou privés.

Introduction

- Pressurized Water Reactors (PWR) represent 76.3 % of the electrical power produced in 2015 in France [1]
- Operational feedback** → **intergranular Stress Corrosion Cracking (SCC)** affecting cold-worked stainless steel components in PWR primary water [2]
- PWR primary water : pure hydrogenated and deaerated water, with Li and B additions, 150 bars and 290-340 °C
- Oxygen transients** (oxygen injections in PWR primary water [3, 4]) = **Possible detrimental factor**
- Dissolved oxygen in PWR primary water has an impact on the :
 - Location of initiation sites (trans- or intergranular sites) [5]
 - Oxide layer properties (inner layer morphology and composition) [6]
- However, **the oxygen transient effect on SCC susceptibility has not been extensively investigated to date**



Objectives

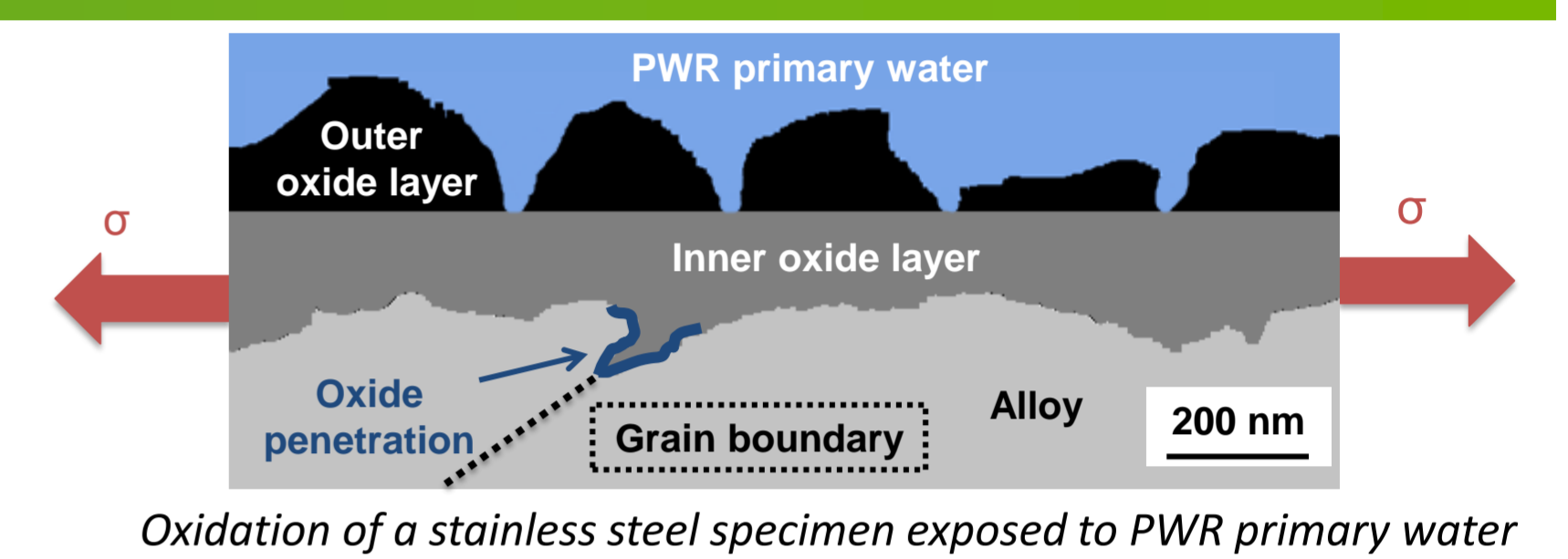
General aim: Determine the effect of dissolved oxygen on SCC susceptibility of a cold-worked stainless steel in PWR primary water

- Hypothesis: Link between oxidation and SCC susceptibility
- In particular, localized oxide penetrations are suspected to play a crucial role in crack initiation

First step: effect of dissolved oxygen in PWR primary water

- On oxidation kinetics and surface oxide layers nature
- On localized oxide penetration kinetics, morphology and nature

Pre-stained / non cold-worked 316L stainless steel specimens



Material and Experimental Conditions

Composition (weight %)	C	S	P	Si	Mn	Ni	Cr	Mo	Cu	N
316L – this study	0,016	0,0009	0,026	0,62	1,86	10	16,54	2,03	-	0,022

Nominal PWR primary water (pure water, 150 bars, 340°C, pH = 7.0 to 7.2)					
Element	B	Li	H	O	Chlorides, sulfates, fluorides
Concentration	1000 ppm	2 ppm	25-35 mL/kg (TPN)	< 0,01 ppm	< 0,05 ppm

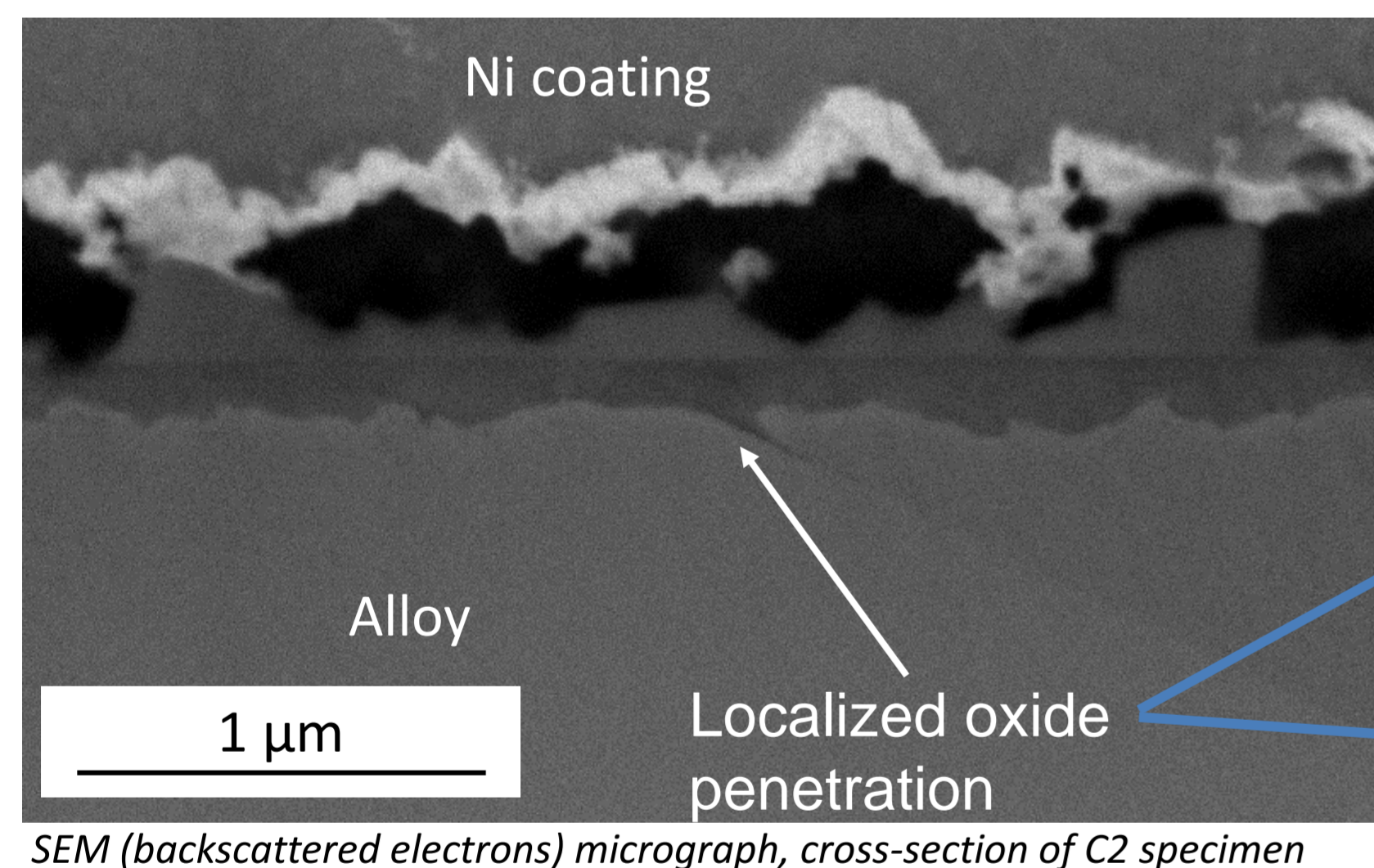
Annealing treatment (1050°C, Ar overpressure, 1h) applied to our specimens
 → Isotropic austenite grains (50 ± 10 µm) and residual ferrite (1-5 % in volume)
 → Non-sensitized material

Oxidation in nominal PWR primary water

Specimen	Oxidation time	Material State
C2	500 h	Non cold-worked
C1	1000 h	Non cold-worked
EP1	500 h	Pre-stained (11%)

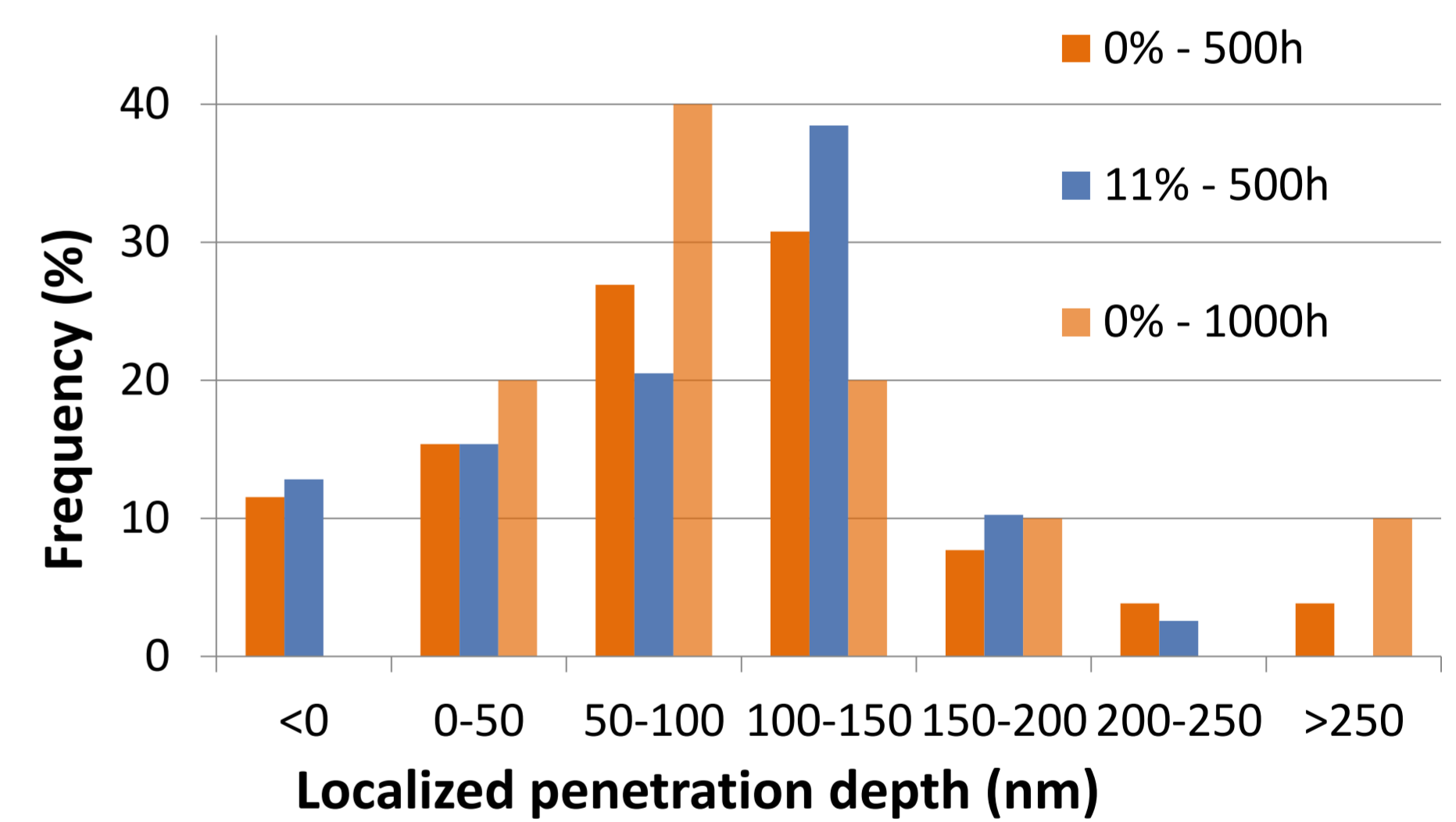
Results

Oxidation kinetics

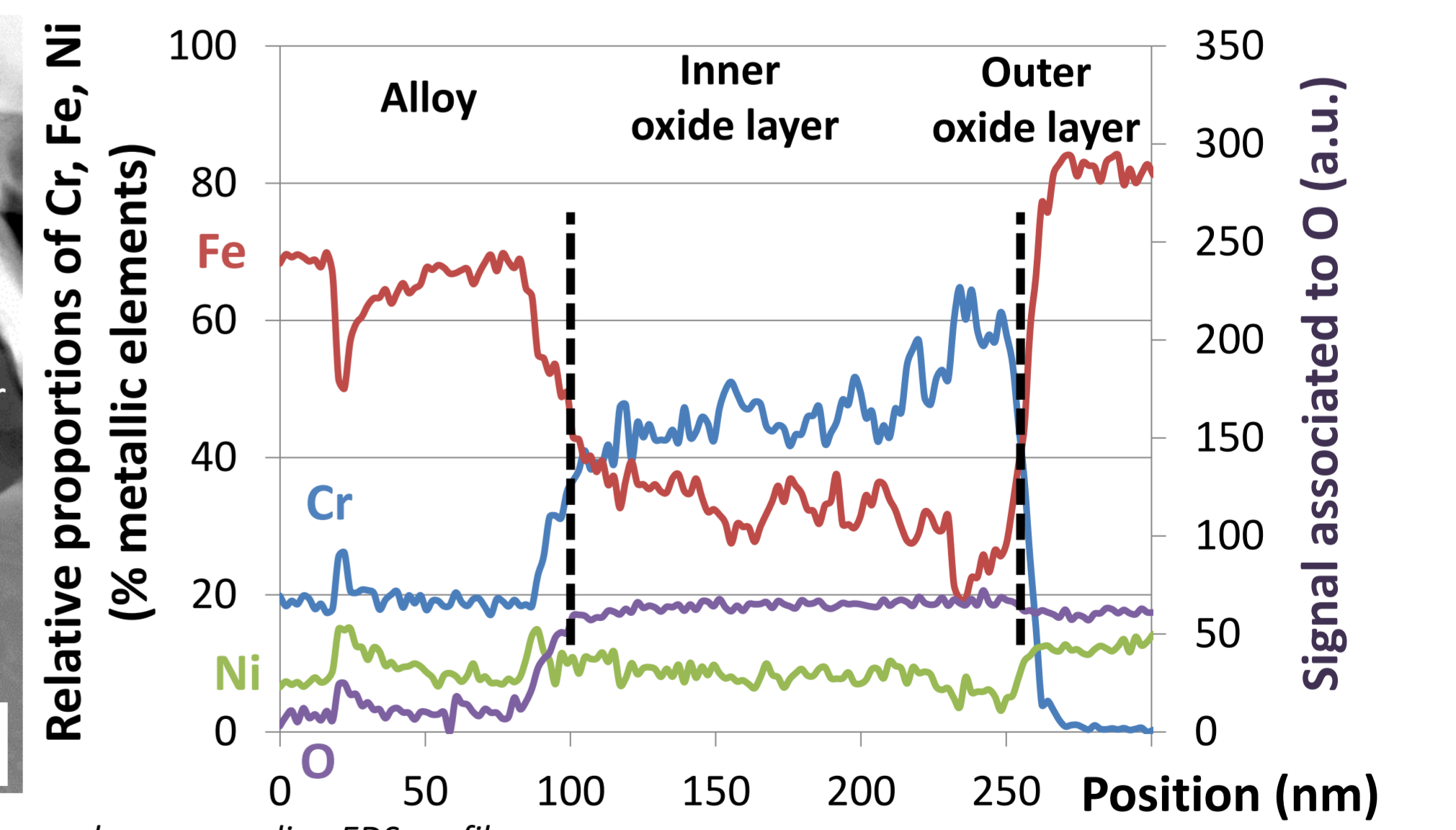
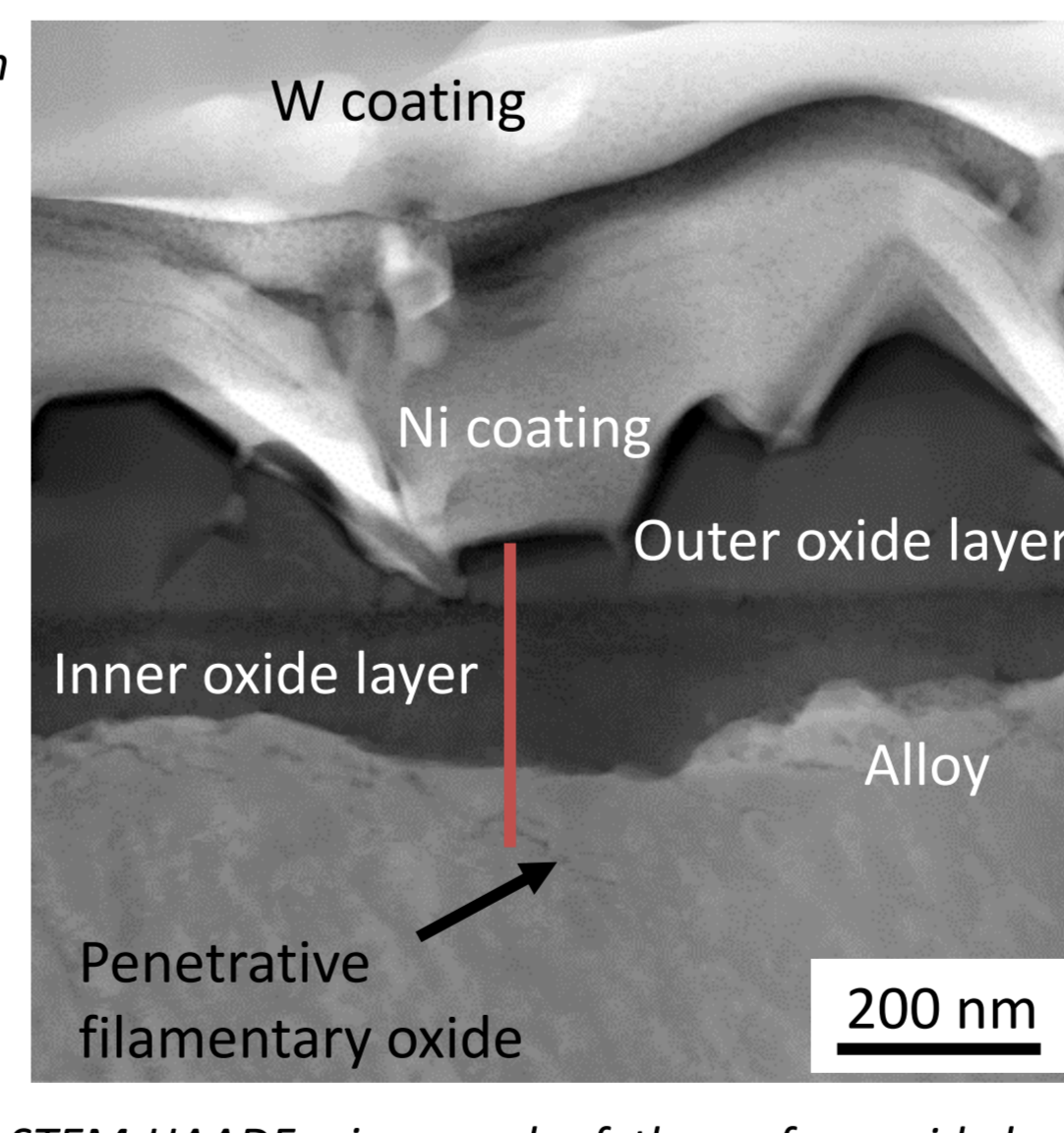
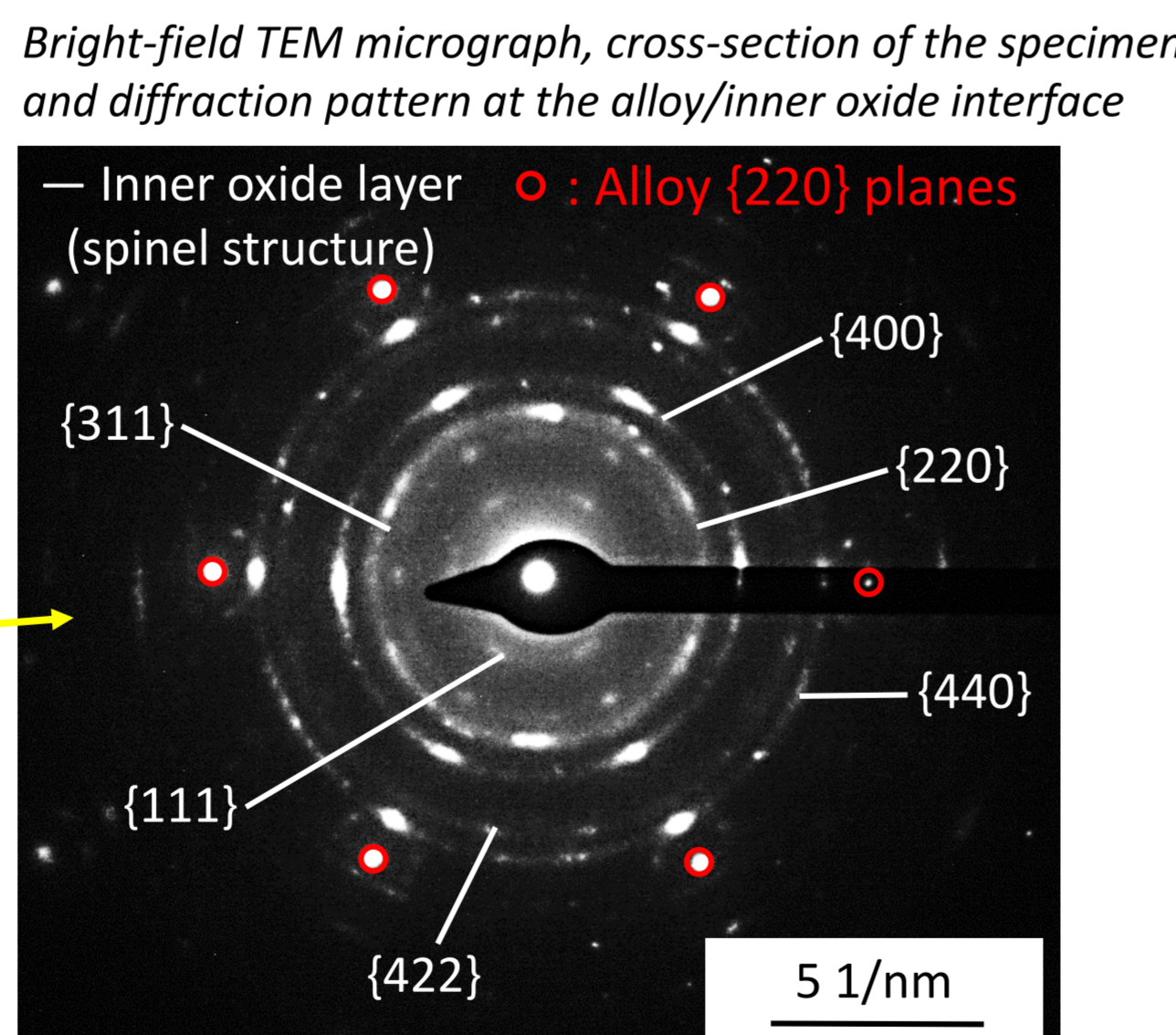
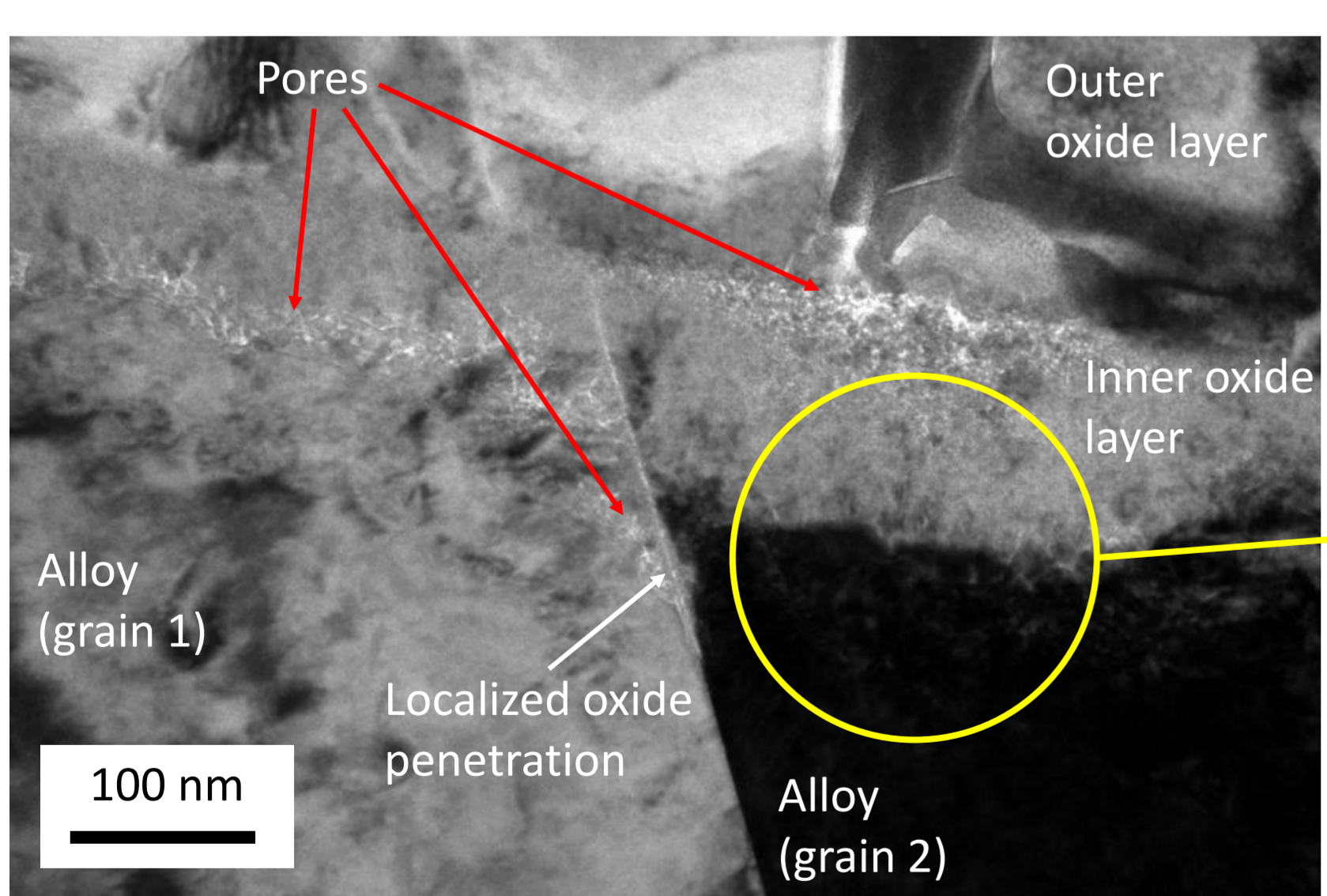


Non cold-worked specimens → at grain boundaries
 Pre-stained specimen → at slip bands

Specimen	Mean oxide thickness (nm)	Mean localized penetration depth (nm)
500 h	140 ± 41	92 ± 78
11% - 500 h	89 ± 43	87 ± 64
1000 h	146 ± 42	105 ± 74



TEM characterization of a non cold-worked specimen oxidized 500h at 340° C



Conclusions

SEM observations after oxidation tests in nominal PWR primary water

- Duplex surface oxide layer
- Localized oxide penetrations at grain boundaries or at slip bands
- Cold-working → lower mean oxide thickness
- Increasing oxidation times → increase of the deepest localized penetration density

TEM characterization of a non cold-worked specimen oxidized 500h at 340°C

- Inner oxide layer: randomly-oriented nano-grains of spinel structure, composition close to (Fe,Ni)(Fe,Cr)₂O₄
- Outer oxide layer: Fe-rich, possibly magnetite Fe₃O₄ (to be confirmed)

Next steps → Tests in nominal PWR primary water: oxidation kinetics and impact of cold-working on oxidation
 Adjustment of the experimental methodology for tests in aerated PWR primary water
 Tests in aerated PWR primary water → effect of dissolved O₂

[1] : Commissariat à l'Energie Atomique, Mémento sur l'énergie 2016, 2016
 [2] : ILEVBARE, G., et al, Fontevraud 7, Avignon, 2010

[3] : COMBRADE, P., et al, Dossier Technique de l'ingénieur, bn3756, 2014
 [4] : BETOVA, I., et al, rapport VTT-R-00699-12, 2012

[5] : HUIJN, N., et al, EnvDeg 2015
 [6] : TERACHI, T., et al, 61st NACEExpo, Paper 06608, 2006