



**HAL**  
open science

## Thermodynamic modelling of key metallic sub-systems for the treatment of mid-level wastes

L. Soldi, S. Gossé, J. Schorne Pinto, C. Bonnet, A. Laplace, M. Roskosz

► **To cite this version:**

L. Soldi, S. Gossé, J. Schorne Pinto, C. Bonnet, A. Laplace, et al.. Thermodynamic modelling of key metallic sub-systems for the treatment of mid-level wastes. Calphad XLVI 2017, Jun 2017, Saint-Malo, France. cea-02434004

**HAL Id: cea-02434004**

**<https://cea.hal.science/cea-02434004>**

Submitted on 9 Jan 2020

**HAL** is a multi-disciplinary open access archive for the deposit and dissemination of scientific research documents, whether they are published or not. The documents may come from teaching and research institutions in France or abroad, or from public or private research centers.

L'archive ouverte pluridisciplinaire **HAL**, est destinée au dépôt et à la diffusion de documents scientifiques de niveau recherche, publiés ou non, émanant des établissements d'enseignement et de recherche français ou étrangers, des laboratoires publics ou privés.

# Thermodynamic modelling of key metallic sub-systems for the treatment of mid-level wastes

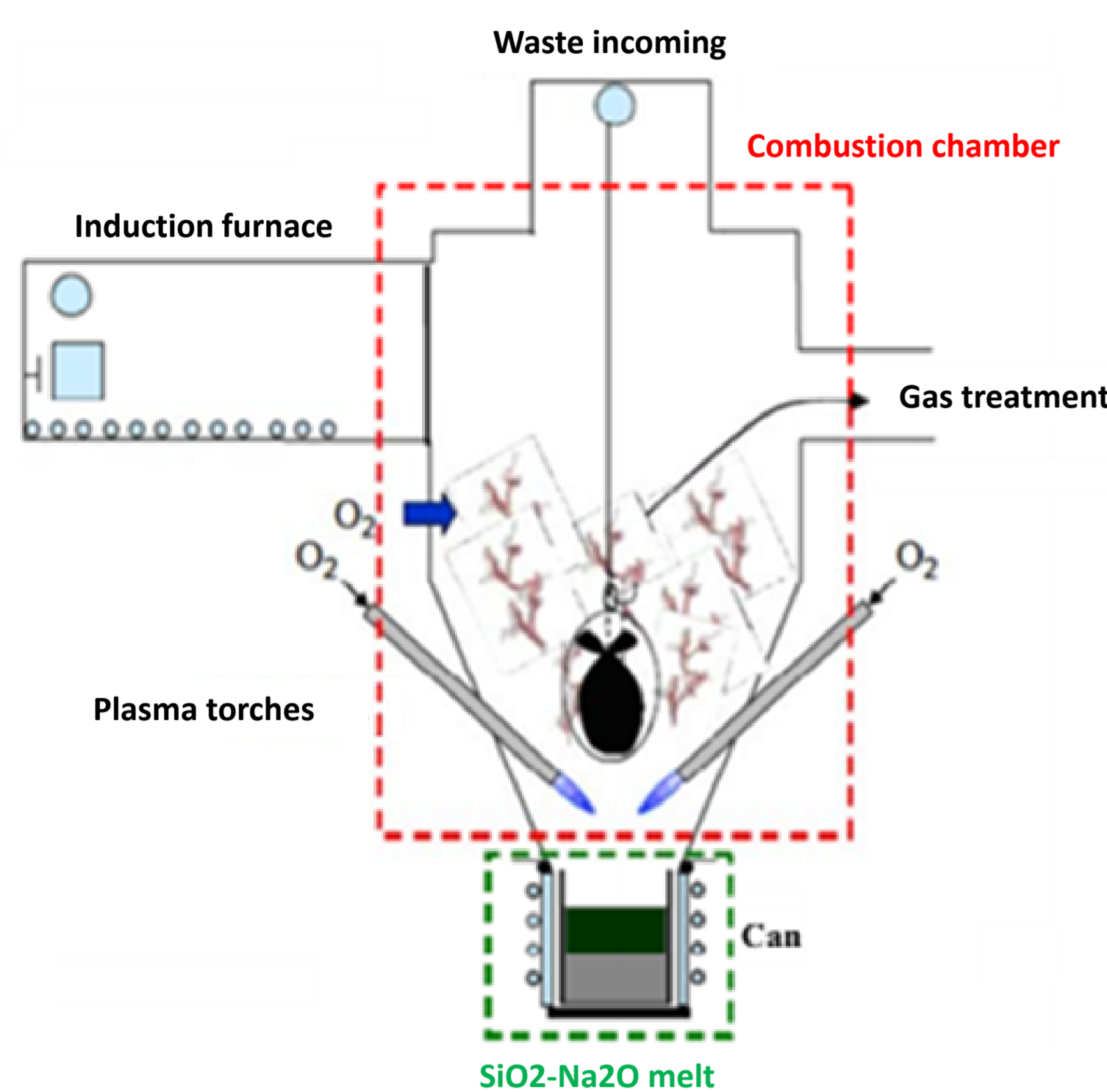
L. Soldi<sup>1</sup>, S. Gossé<sup>1</sup>, J. Schorne Pinto<sup>1</sup>, C. Bonnet<sup>1</sup>, A. Laplace<sup>2</sup>, M. Roskosz<sup>3</sup>

<sup>1</sup> Den-Service de Corrosion et du Comportement des Matériaux dans leur Environnement (SCCME), CEA, Université Paris-Saclay, F-91191, Gif-sur-Yvette, France

<sup>2</sup> DEN-DE2D-SEVT-LDMC, CEA Marcoule – 30207 Bagnols sur Cèze Cedex, France

<sup>3</sup> Institut de Minéralogie, Physique des Matériaux et Cosmochimie, Museum National d'Histoire Naturelle, 57 rue Cuvier, 75231 Paris Cedex 05, France

## Context and Aim of the work

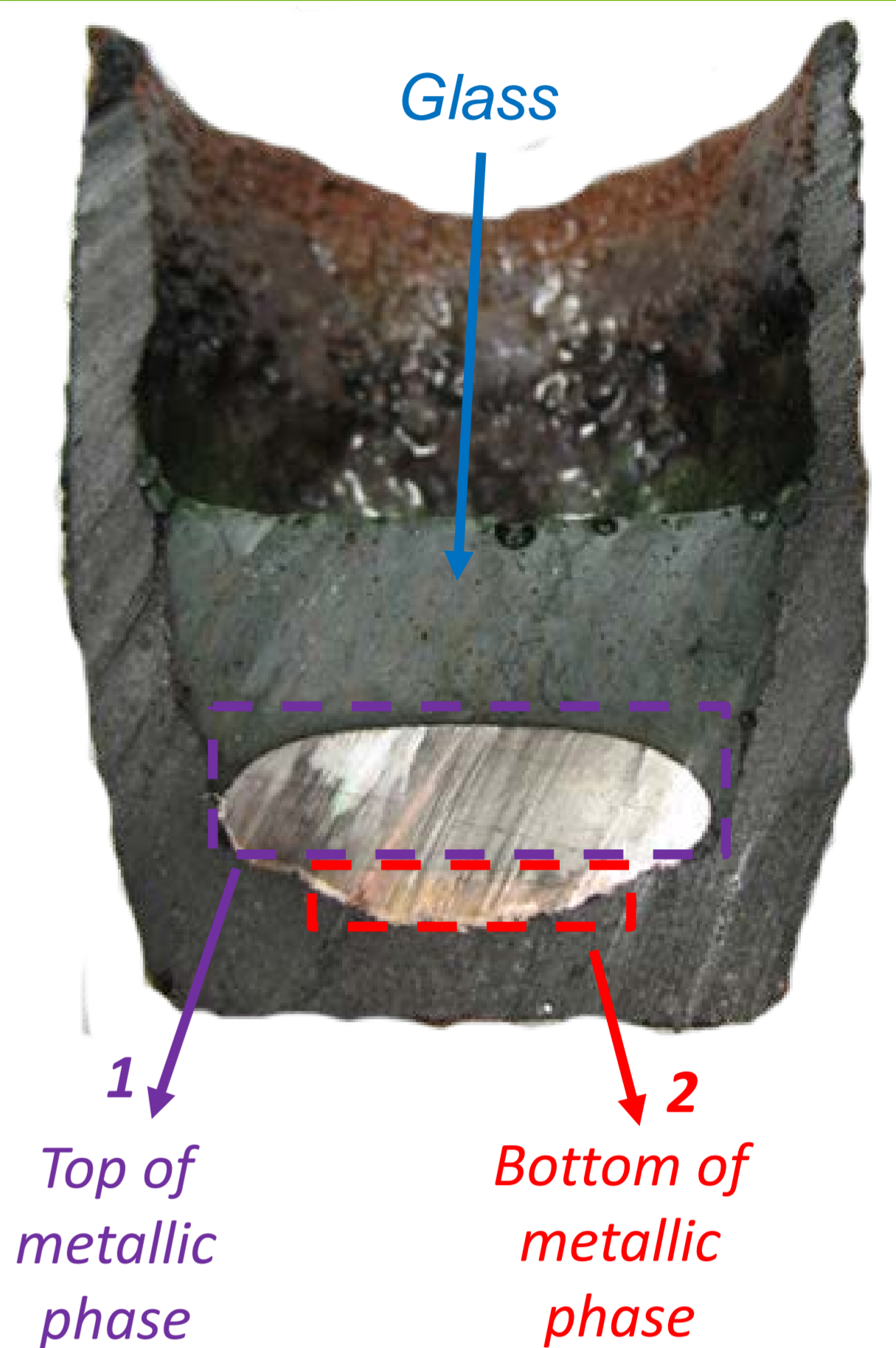


The **technological waste** coming from the production of uranium and plutonium Mixed Oxides fuel (MOx) results **contaminated** by  $\alpha$ -emitters and has to be treated as a long-life medium-activity nuclear waste. Treatments are then needed to fix the radio-isotopes in a stable matrix, in order to avoid an accidental release in the environment.

Among the possible solutions, one consists in **melting** such **technological waste** (mainly stainless steel, copper and aluminum scraps) and merging it together **within a  $\text{SiO}_2\text{-Na}_2\text{O}$  melt**. A glass containing a complex metallic phase is then produced and will be disposed in a deep geological site.

The presence of numerous elements, the range of temperature and the chemical interactions between the metallic and oxide liquids make this system very complex to describe. The **CALPHAD method** is well suited to **predict** the thermodynamic interactions inside such complex mixtures. Thermodynamic modeling will also provide useful information to optimize the entire process at industrial scale.

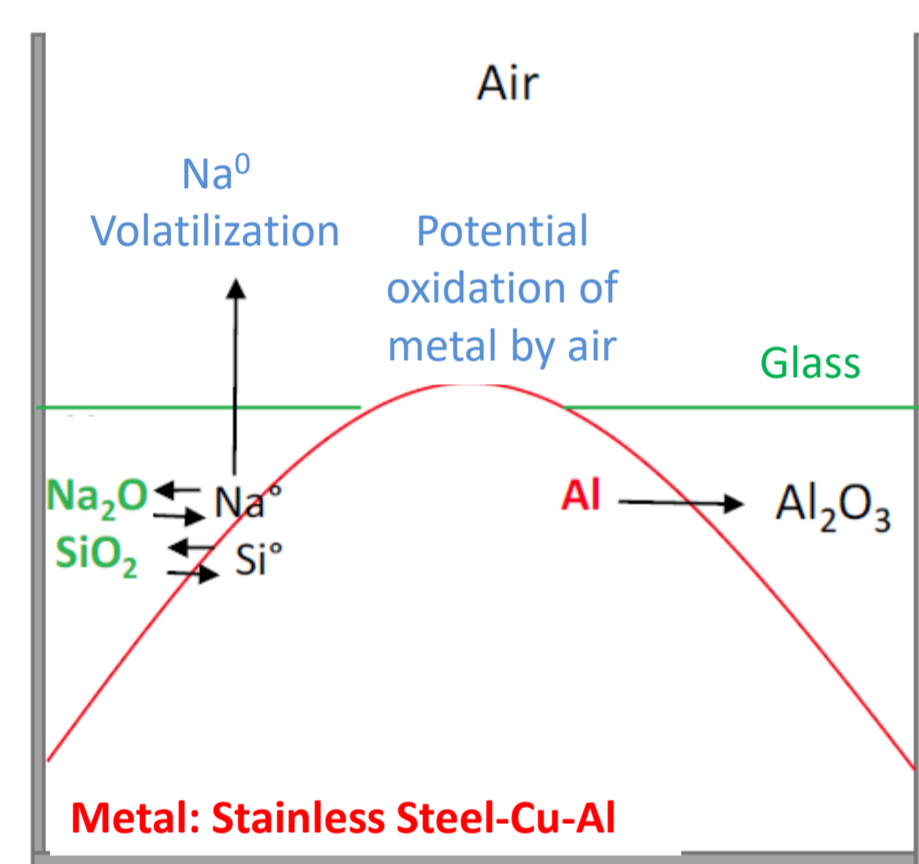
The first step concerns the analysis of the **metallic phase**, here represented as Al-Cu-Fe-Si-U and, especially, focusing on **the behavior of uranium**.



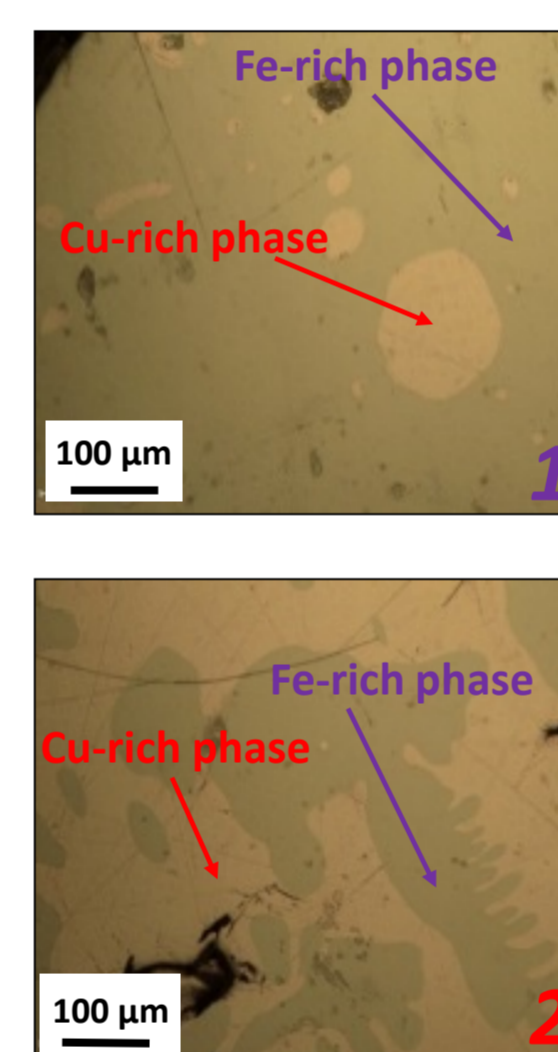
## Results

### On Pilot Process Scale

#### Interaction between liquids



- Total oxidation of Al.
- Partial reduction of  $\text{SiO}_2$  and  $\text{Na}_2\text{O}$ .
- Total evaporation of reduced  $\text{Na}^0$ .
- Negligible oxidation due to air.

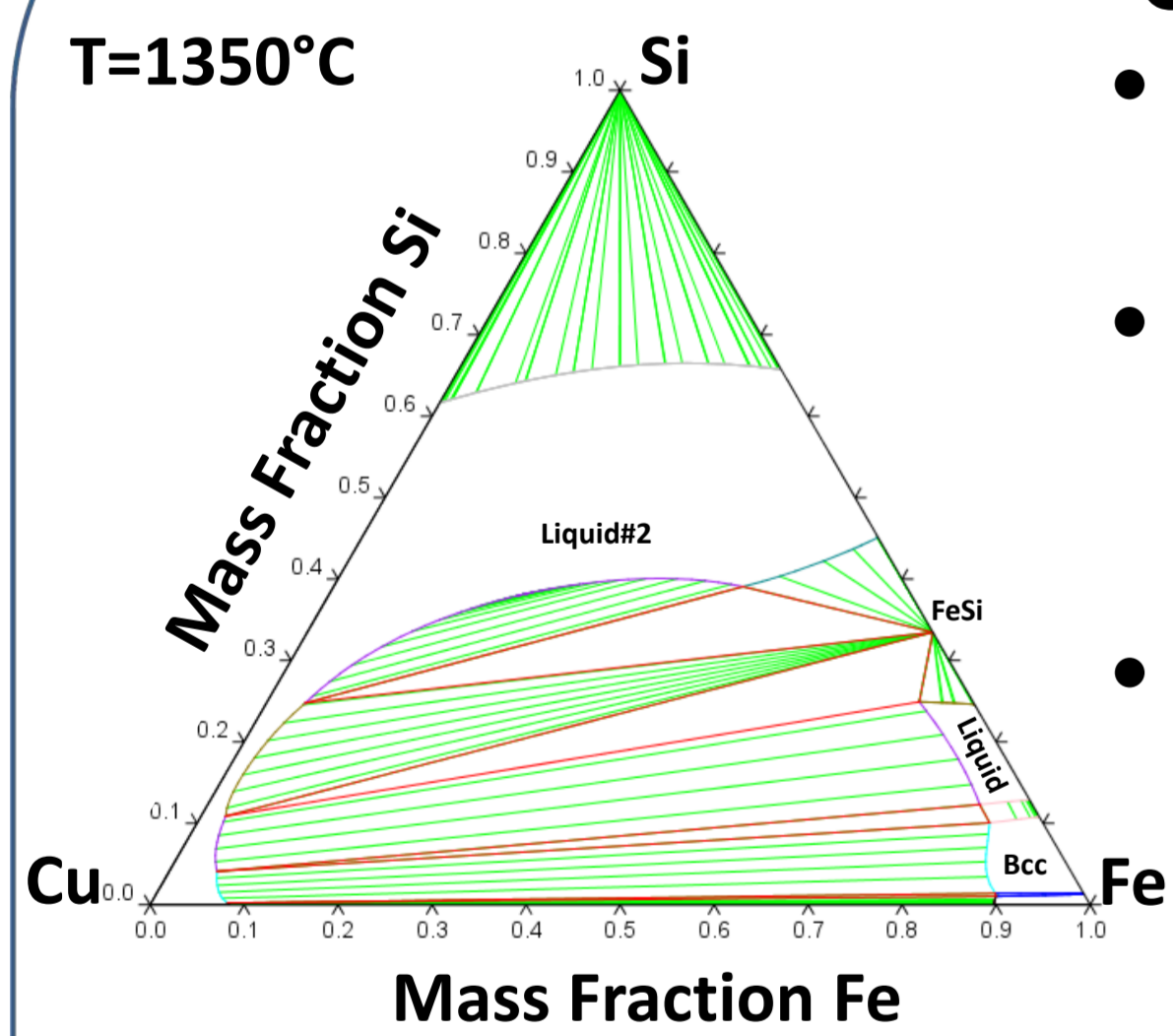


#### Metallic composition

- Top of the metallic side (**1**) mainly made by stainless steel +  $\text{Si}^0$ , with Cu inclusions.
- Bottom (**2**) the opposite: Cu-rich phase with stainless steel +  $\text{Si}^0$  inclusions.
- Almost same composition of phases in both cases.
- Initial  $\text{Al}^0$  is not found, while reduced  $\text{Si}^0$  is observed in Fe-rich phases.

### On Laboratory Scale

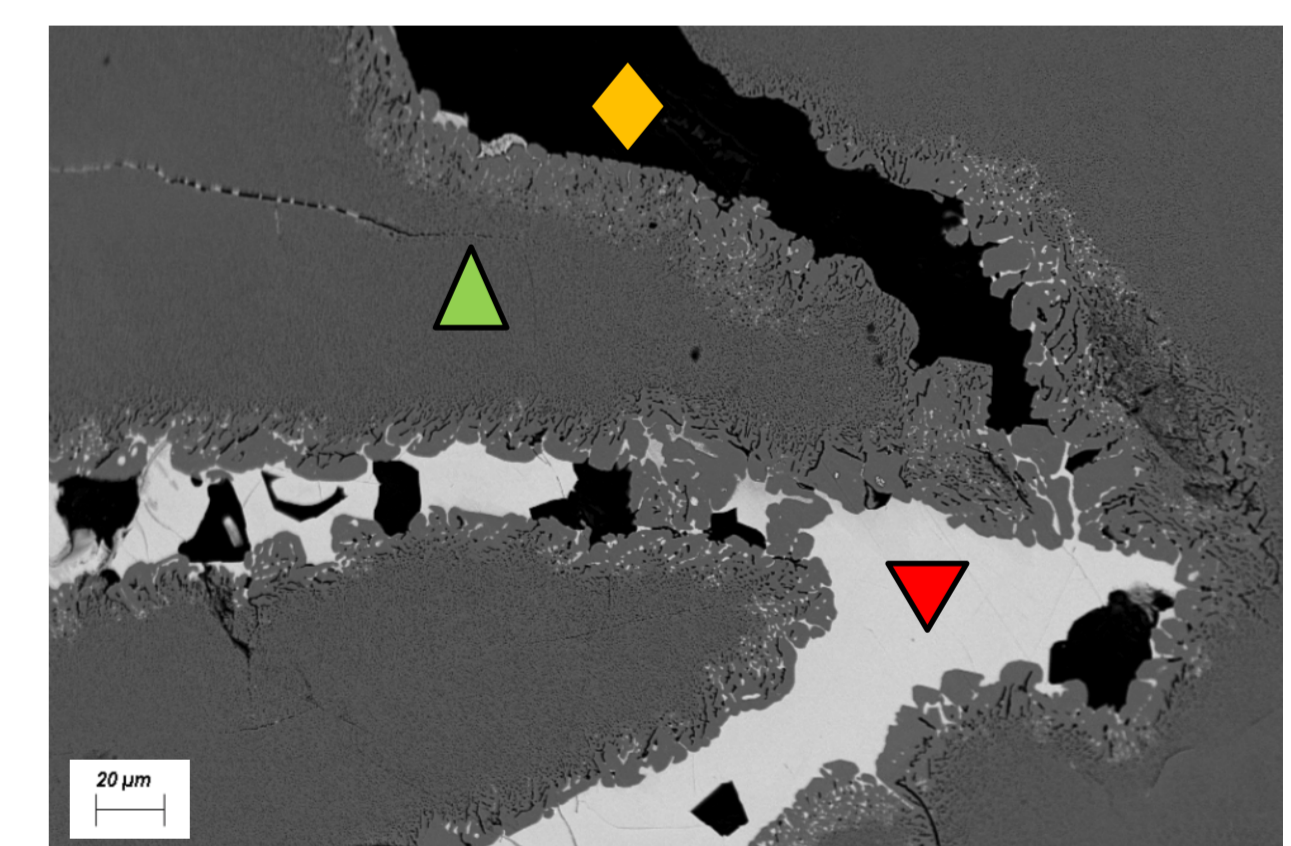
#### Cu – Fe – Si (Wang, Journal of Phase Equilibria, 2002)



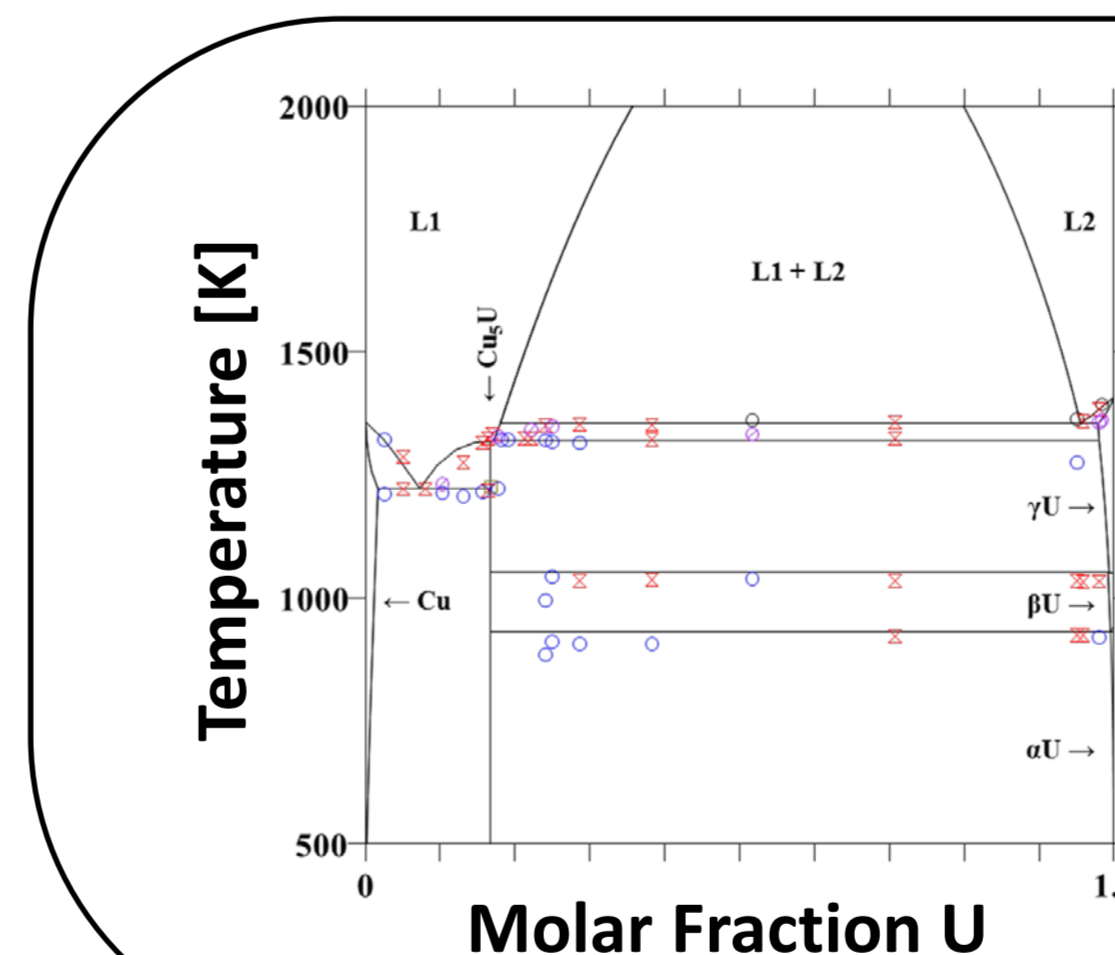
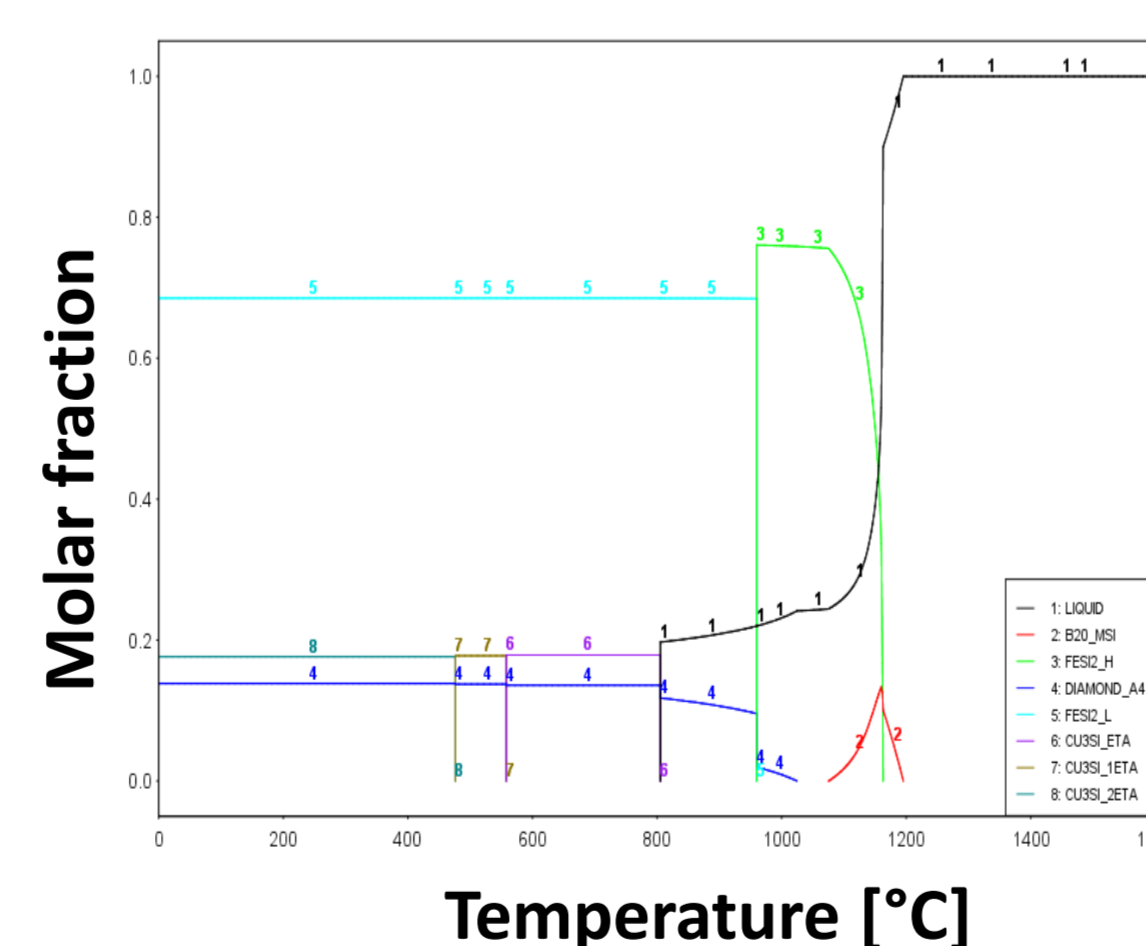
- Above 1170 °C appearance of a miscibility gap in the liquid phase.
- In the Si poor region, both liquids are involved in three phase equilibria with (Fe,Si,Cu)-BCC and FeSi intermetallic.
- At higher temperature, the three phase equilibria disappear in favor of the liquid miscibility gap (see isothermal section at 1350°C).

- EDS image on the sample with composition  $\text{Cu}_{22}\text{Fe}_{32}\text{Si}_{46}$  three phases are found, perfectly in agreement with the simulation:

- ◆ Black areas → Diamond
- ▲ Grey areas →  $\text{FeSi}_2$
- ▼ White areas →  $\text{Cu}_3\text{Si}$



- Separation of a Cu-rich phase directly from the liquid (see solidification path of  $\text{Cu}_{22}\text{Fe}_{32}\text{Si}_{46}$  composition).
- Experimental analyses are in good agreement with the thermodynamic modelling.



#### Cu-U thermodynamic modeling

- Cu-U binary modeled from experimental data
- A large liquid miscibility gap is also present in this system
- The intermetallic phase  $\text{Cu}_5\text{U}$  appears during solidification

## Conclusions

This work focuses on some key sub-systems that may form during the treatment of contaminated technological waste:

- **Al is totally oxidized** as result of the reaction with  $\text{SiO}_2\text{-Na}_2\text{O}$ , so it may not be considered in the modeling of the metallic phase. On the contrary, **Si is included** as result of the interaction  $4 \text{Al}^0 + 3 \text{SiO}_2 \rightarrow 2 \text{Al}_2\text{O}_3 + 3 \text{Si}^0$ ;
- The metallic phase consists of two composition sets, one rich in Fe, the other one rich in Cu. This behavior is strongly related to the presence of a **large miscibility gap** in liquids and (Cu,Fe)-FCC that extends into the Cu-Fe-Si system at temperatures of the vitrification process;
- The Cu – U system is modeled, showing the presence of another miscibility gap. This can suggest that in the quaternary Cu-Fe-Si-U system, U may be mainly solubilized in the Fe-rich side or form an intermetallic phase with Fe.

## Perspectives

#### Next steps:

- Experimental thermodynamic investigation of the other metallic ternary systems: Cu-Si-U and Fe-Si-U;
- Development of a database including the oxide phases of the system;

#### Future developments:

- Experimental study of the liquid thermo-physical properties (density, viscosity, surface tension) as function of temperature and composition;
- Calculation of the the oxidic/metallic liquids and the crucible interactions