



**HAL**  
open science

## UO<sub>2</sub>-ZrO<sub>2</sub> melting in a cold crucible induction furnace: simulation and experiments

E. Sauvage, P. Brun, J. Lacombe, L. Aufore

### ► To cite this version:

E. Sauvage, P. Brun, J. Lacombe, L. Aufore. UO<sub>2</sub>-ZrO<sub>2</sub> melting in a cold crucible induction furnace: simulation and experiments. *Electrotechnologies for Material Processing (XVIII International UIE-Congress)*, Jun 2017, Hannovre, Germany. cea-02338865

**HAL Id: cea-02338865**

**<https://cea.hal.science/cea-02338865>**

Submitted on 21 Feb 2020

**HAL** is a multi-disciplinary open access archive for the deposit and dissemination of scientific research documents, whether they are published or not. The documents may come from teaching and research institutions in France or abroad, or from public or private research centers.

L'archive ouverte pluridisciplinaire **HAL**, est destinée au dépôt et à la diffusion de documents scientifiques de niveau recherche, publiés ou non, émanant des établissements d'enseignement et de recherche français ou étrangers, des laboratoires publics ou privés.



Emilien Sauvage<sup>1†</sup>, Patrice Brun<sup>1</sup>, Jacques Lacombe<sup>1</sup>, Laurence Aaufore<sup>2</sup>

1 - CEA, DEN, DE2D, SEVT, LDPV, F-30207 Bagnols-sur-Cèze, France

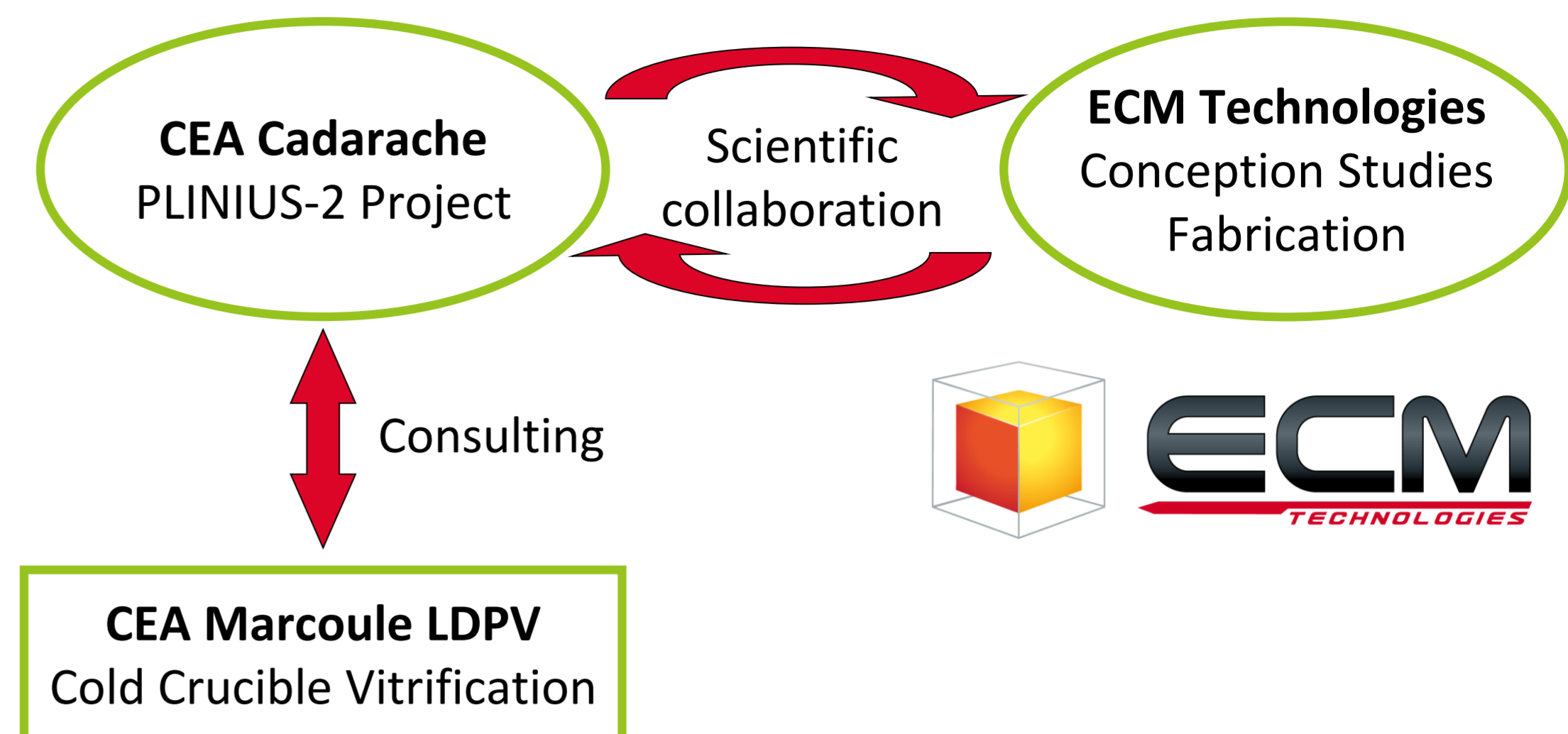
2 - CEA, DEN, DTN, SMTA, F-13115, St Paul-lès-Durance

† Corresponding author : emilien.sauvage@cea.fr

## Plinius-2 project

In the field of severe accident studies for generation 2, 3 & 4 nuclear reactors, the Plinius-2 project aims to build a new facility to perform experiments of corium interactions tests at a large scale until 2020. In this context, the project, in collaboration with ECM Technologies, has to define and build a furnace able to melt up to 500 kg of different compositions of corium surrogates.

This poster presents the work achieved in the CEA Marcoule.



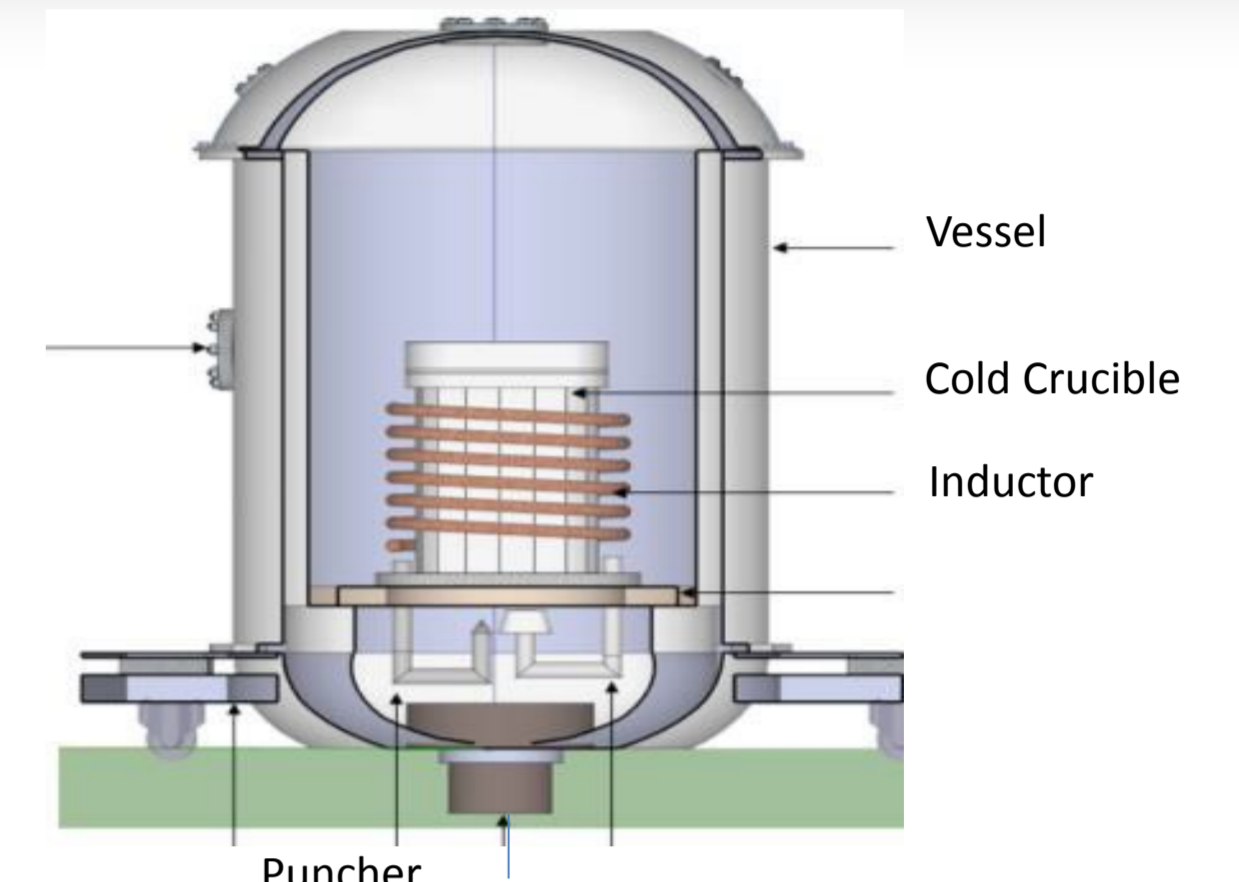
## Corium interactions studies

- Corium composition
  - oxides mix (UO<sub>2</sub>, ZrO<sub>2</sub>, SiO<sub>2</sub>)
  - with or without a metallic fraction (U, Zr, Fe, Ni etc.) from 0 to 30%wt
- Melting temperature > 2500°C
- Cold crucible technology has been chosen

Building project (CEA Cadarache)



Concept of the future furnace



## Experimental setup

CEA Marcoule

## Numerical Simulation

- Small scale experiments with ZrO<sub>2</sub> to check :

- Wall heat fluxes
- Loading feasibility
- Pouring feasibility
- Crust properties

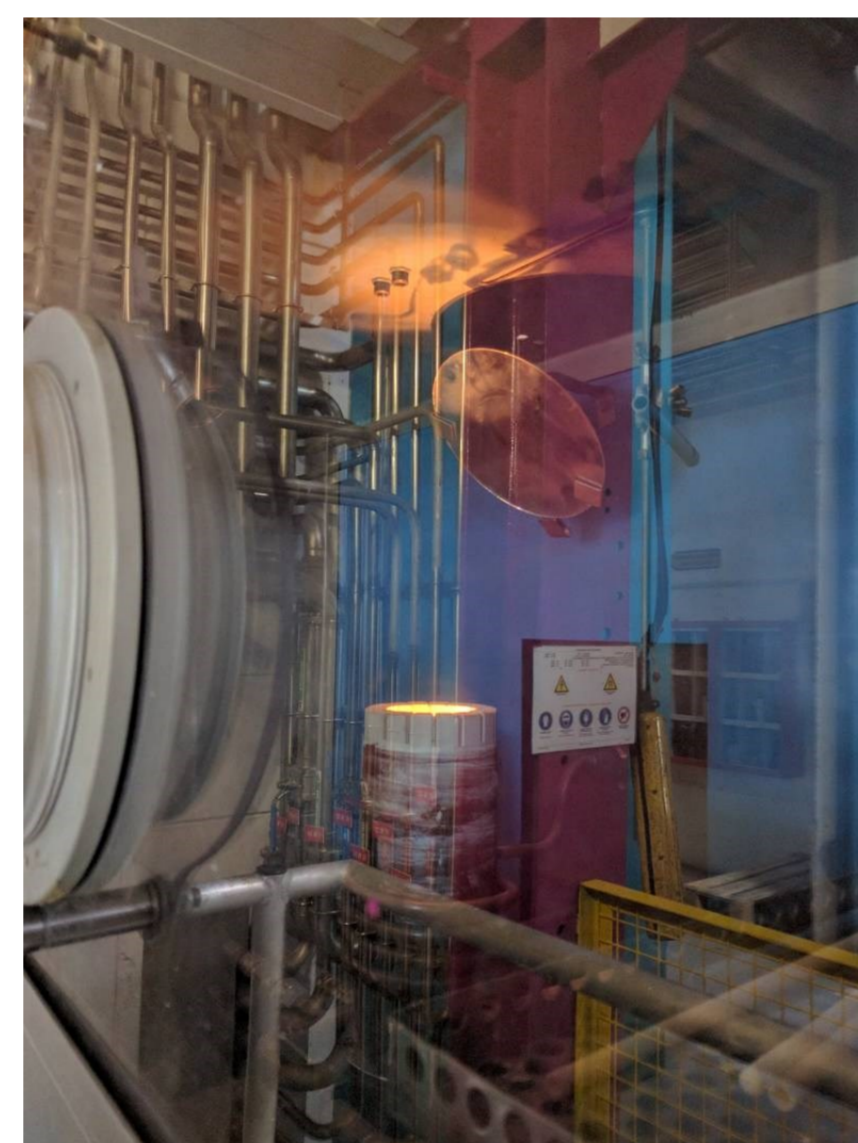
- Lamp HF generator

- 80 kW
- 2.8 MHz

- Cold Crucible

- Inner diameter 8 cm
- Coated stainless steel

Fusion cell (Marcoule)



Initial load



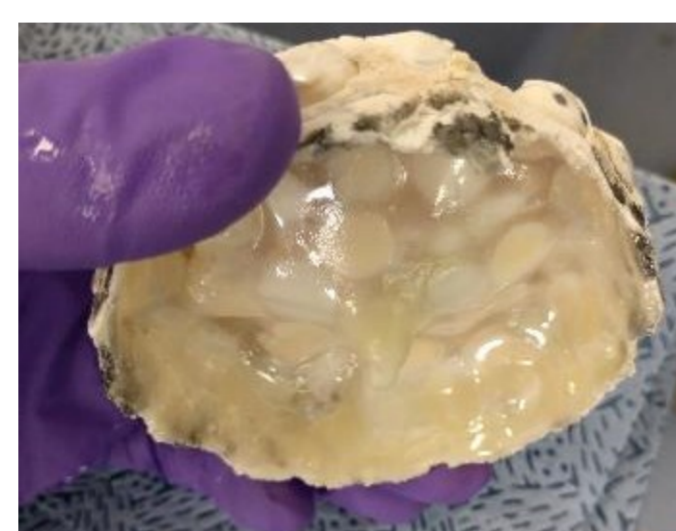
Mix of solid balls and powder to enhance apparent density (ZrO<sub>2</sub>+Y<sub>2</sub>O<sub>3</sub> 5%)

Melting process



Melting at T > 2800 °C  
Reloading during melting

After melting

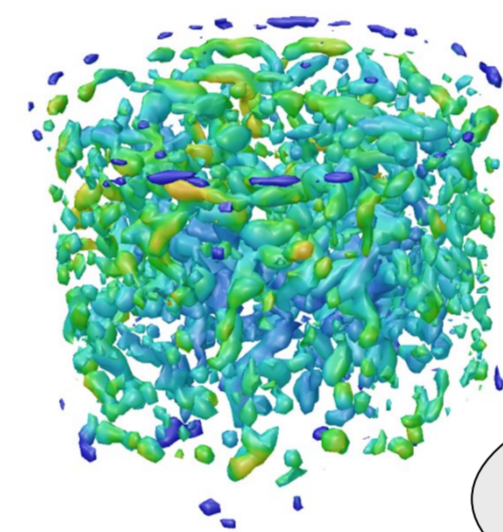


Upper crust



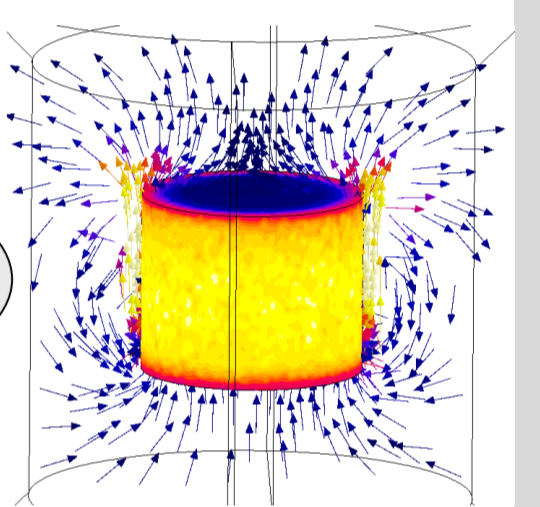
ZrO<sub>2</sub> ingot (950 g)

- Simulations are performed to bridge the gap between the « small scale experiments with ZrO<sub>2</sub> » and the « large scale with complex corium ». See [3] for more details.



Electrical conductivity  
 $\log_{10}(\sigma) = a + \frac{b}{T}$

Induction 3D  
FLUX® A, V



Lorentz Forces  
 $f_{\text{Lorentz}}$

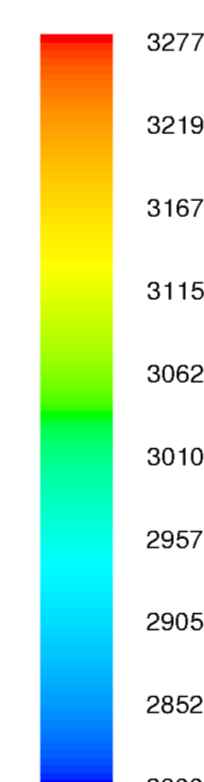
Fluid mechanics 3D  
FLUENT® T, u

Joule power  
 $Q_{\text{th}} = \frac{|j|^2}{2\sigma}$

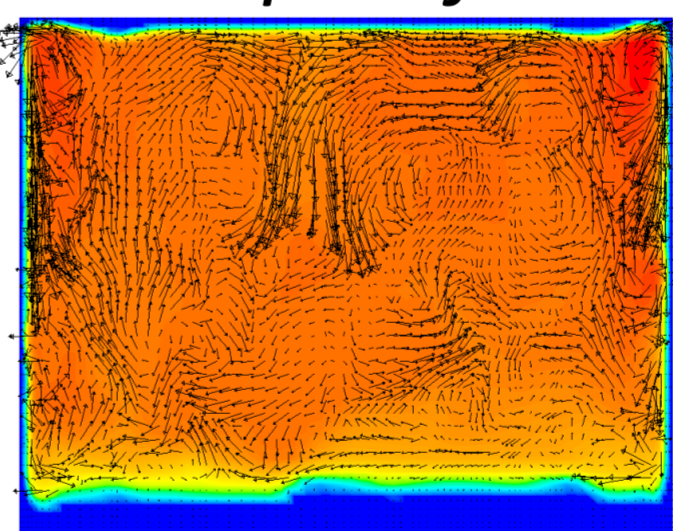
- Incompressible Navier-Stokes equation with turbulence modelling : LES
- Files transfer between Fluent and Flux with interpolation

UO<sub>2</sub> data set from [2]

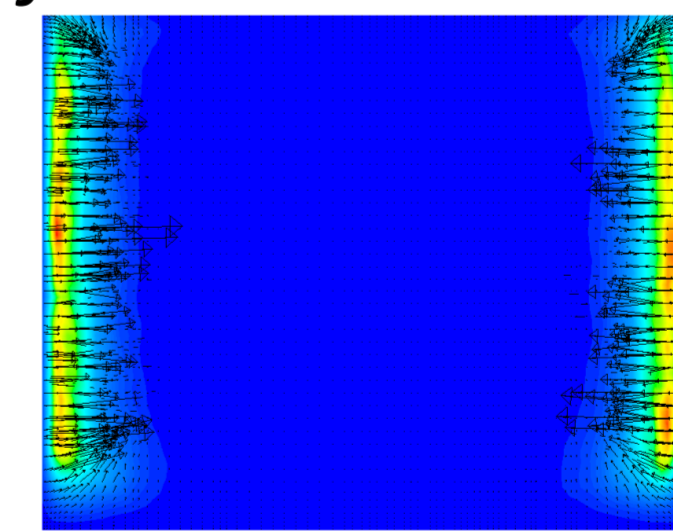
Properties	Unit	Value / Law
Density	kg m <sup>-3</sup>	10900 – 0.7*T
Heat capacity	J kg <sup>-1</sup> K <sup>-1</sup>	480
Thermal conductivity	W m <sup>-1</sup> K <sup>-1</sup>	9
Viscosity	kg m <sup>-1</sup> s <sup>-1</sup>	T>3120K : 0.004 else 10 <sup>4</sup>
Electrical conductivity	Ω <sup>-1</sup> m <sup>-1</sup>	3.569*10 <sup>5</sup> *exp(-13345/T)



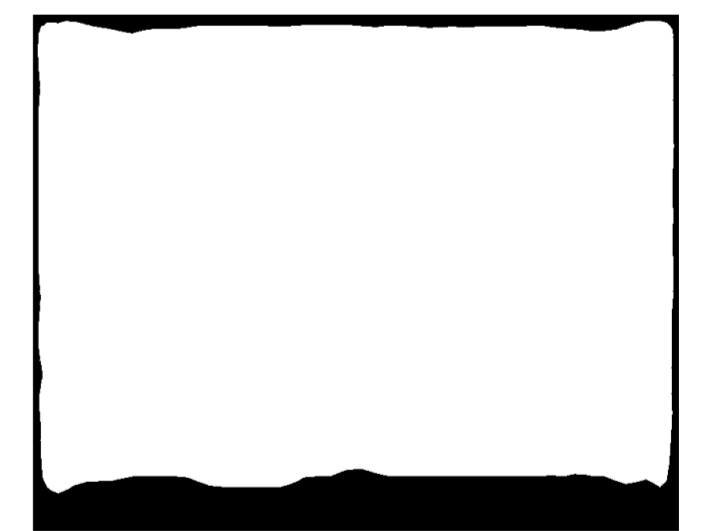
Example of results for a 50 cm inner diameter crucible



Temperature and velocity vectors



Joule power and Lorentz forces vectors

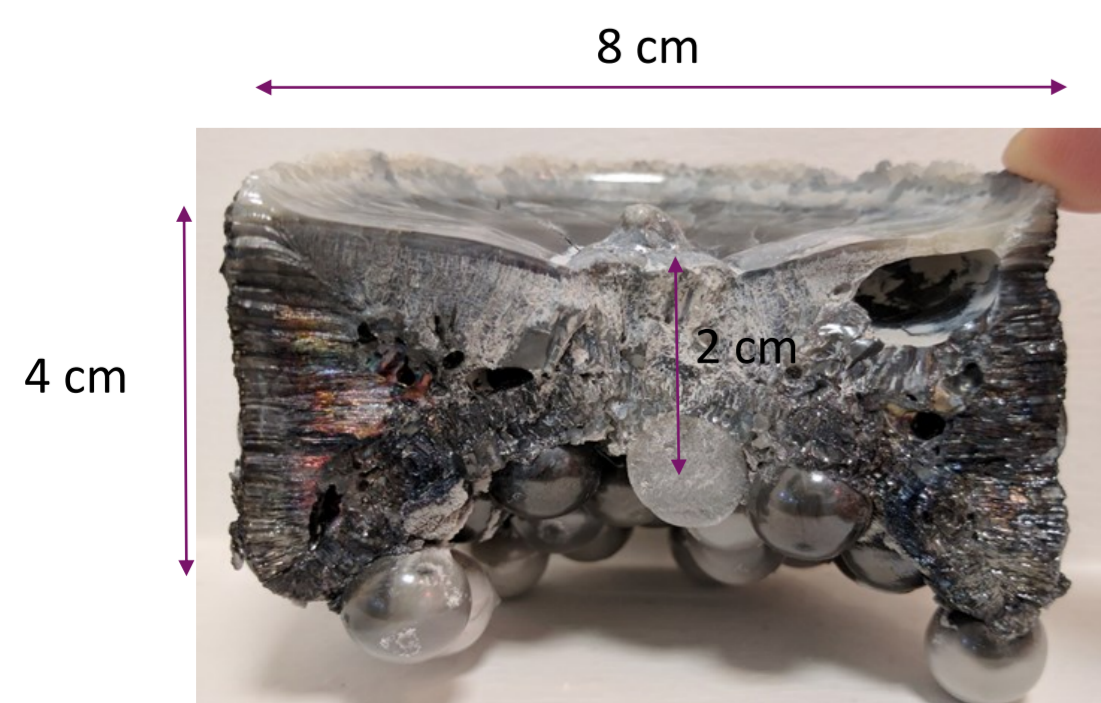


Viscosity contour = crust

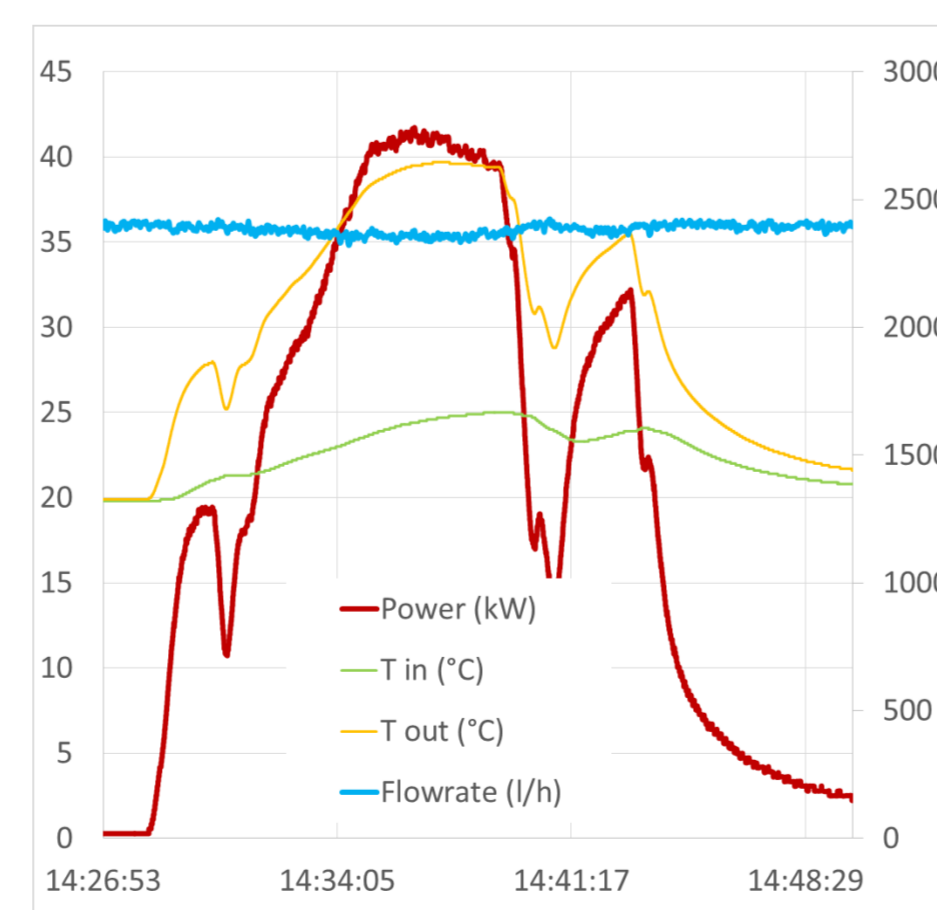
## Contributions to the project

- Estimation of the wall heat flux between the melt and the crucible

- Power received by the crucible
- Flux about 120 W/cm<sup>2</sup>



View of the ingot after slicing



Thermal power of the crucible during a melting

- Design and sizing of a 120kg furnace are now completed, construction is under progress. First melting scheduled during 2018 in ECM (Grenoble)

- Repartition of crust thickness is a function of injected Joule power
- Thermal condition at the wall is of great importance to catch the appropriate heat flux. A mixed convection-radiation is used.

Total Joule Power	MW	0.7	0.9	1.1	1.3
Melt fraction	%	78	83	90	94
Mean temperature	K	3021	3103	3207	3382
Bottom crust thickness	cm	7	5.5	3	2

Parametric study for a 500kg furnace with UO<sub>2</sub>

## Reference

1. E. Sauvage, A. Gagnoud, Y. Fautrelle, P. Brun and J. Lacombe. Thermoconvective flow of molten glass heated by direct induction in a cold crucible. *MagnetoHydrodynamics*, vol. 45 (2009), no. 4, pp. 535-542.
2. IAEA. Thermophysical properties database of materials for light water reactors and heavy water reactors, vol. IAEA-TECDOC-1496 (IAEA, 2006).
3. E. Sauvage, P. Brun, J. Lacombe and L. Aaufore. 3D simulation of a 500kg UO<sub>2</sub> melt in a cold crucible induction furnace. *MagnetoHydrodynamics*, vol. 53 (2017), to be published.