



**HAL**  
open science

# Towards an innovative $R_{ij}-\epsilon$ model for turbulence in bubbly flows from DNS simulations

A. Du Cluzeau, G. Bois, Adrien Toutant, J-M. Martinez

## ► To cite this version:

A. Du Cluzeau, G. Bois, Adrien Toutant, J-M. Martinez. Towards an innovative  $R_{ij}-\epsilon$  model for turbulence in bubbly flows from DNS simulations. TI2018 - 5th International conference on Turbulence and Interactions, Jun 2018, Les Trois iles, France. cea-02338616

**HAL Id: cea-02338616**

**<https://cea.hal.science/cea-02338616>**

Submitted on 21 Feb 2020

**HAL** is a multi-disciplinary open access archive for the deposit and dissemination of scientific research documents, whether they are published or not. The documents may come from teaching and research institutions in France or abroad, or from public or private research centers.

L'archive ouverte pluridisciplinaire **HAL**, est destinée au dépôt et à la diffusion de documents scientifiques de niveau recherche, publiés ou non, émanant des établissements d'enseignement et de recherche français ou étrangers, des laboratoires publics ou privés.

DE LA RECHERCHE À L'INDUSTRIE

cea

## 5<sup>th</sup> International Conference on Turbulence and Interactions

# Towards an innovative $R_{ij} - \epsilon$ model for turbulence in bubbly flows from DNS simulations



A. du Cluzeau <sup>1</sup> G. Bois <sup>1</sup> A. Toutant <sup>2</sup> J-M. Martinez <sup>2</sup>

<sup>1</sup> : DEN-Service de thermo-hydraulique et de mécanique des fluides (STMF), CEA, Université Paris-Saclay, F-91191 Gif-sur-Yvette

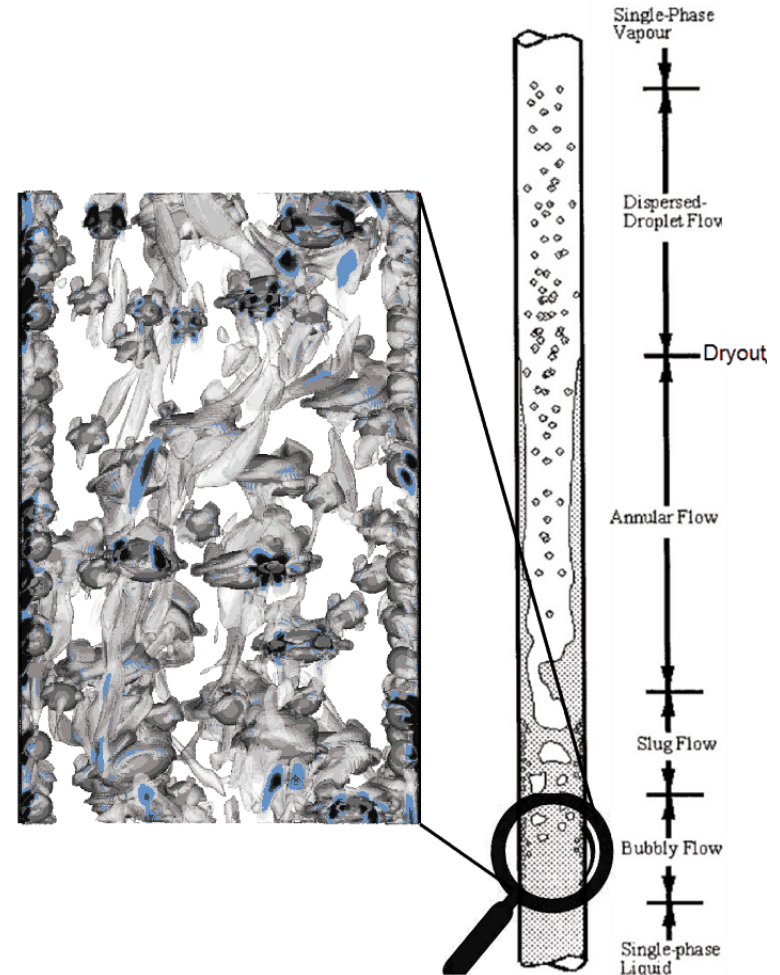
<sup>2</sup> : PROMES-CNRS (UPR 8521) Université de Perpignan Via Domitia |

## Safety issue for PWR : the boiling crisis

- Pressurized water reactor : a very large system
- Critical heat flux : a very local phenomenon
- **Solution : the upscaling strategy**

## Lack of predictive model in two phase flows

- A lot of different regimes
- The importance of the transition between boiling and slug flows
- Bubbles at the wall → decrease of heat transfer
- Importance of the void fraction prediction
- **Focus on dynamical aspects in bubbly flows**



## Towards a numerical reactor

- Need for powerful simulations



DNS

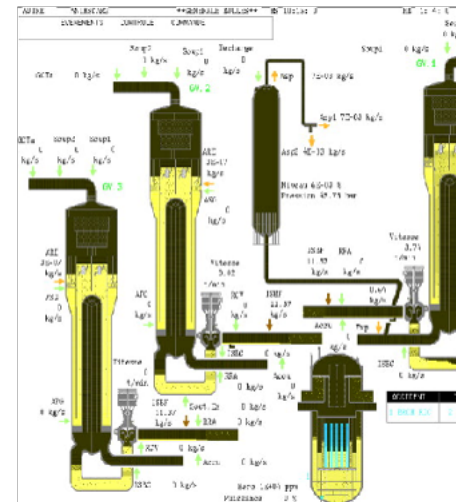



M-CFD



CATHARE  
System

- How can complex two-phase flows be solved in a system code ?



## Towards a numerical reactor

- Need for powerful simulations



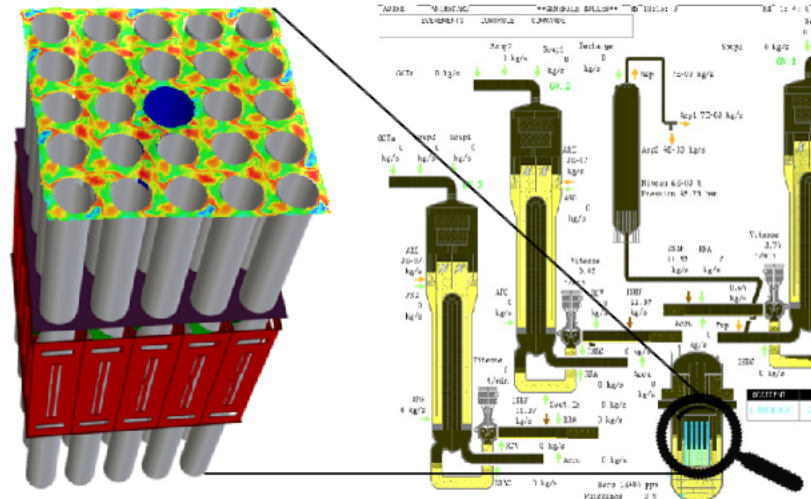
DNS




M-CFD

CATHARE  
System

- How can complex two-phase flows be solved in a system code ?

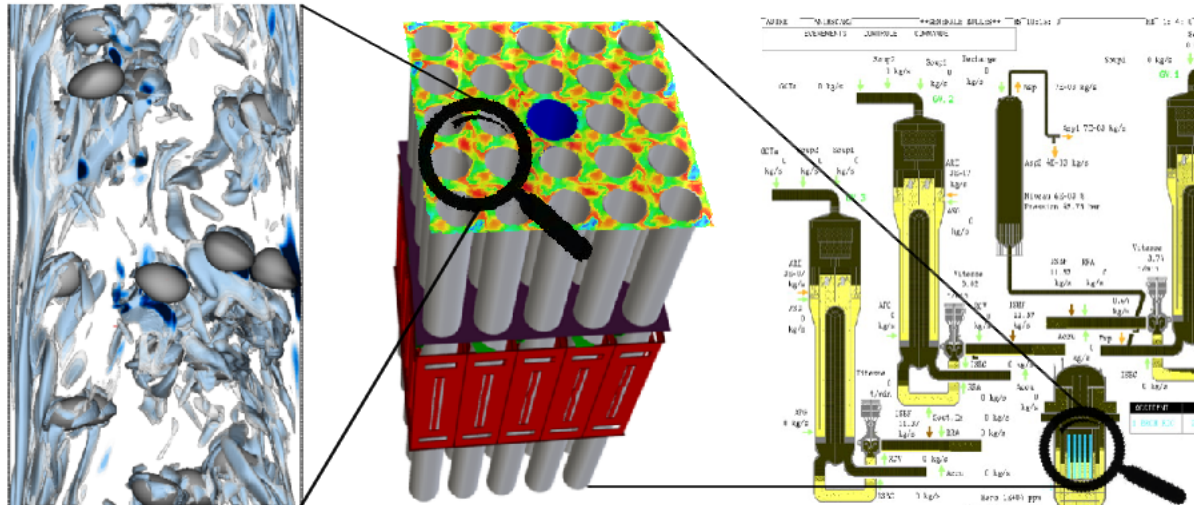


## Towards a numerical reactor

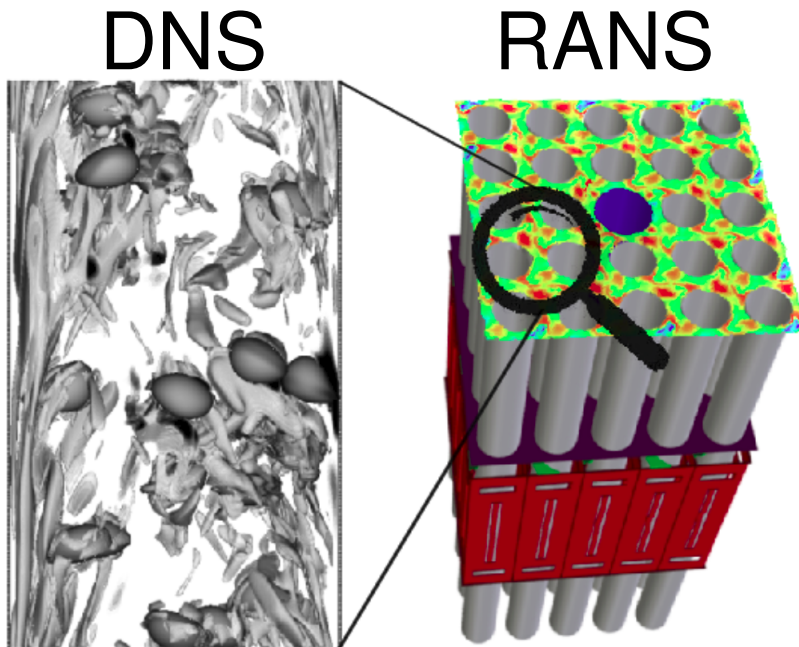
- Need for powerful simulations



- How can complex two-phase flows be solved in a system code ?



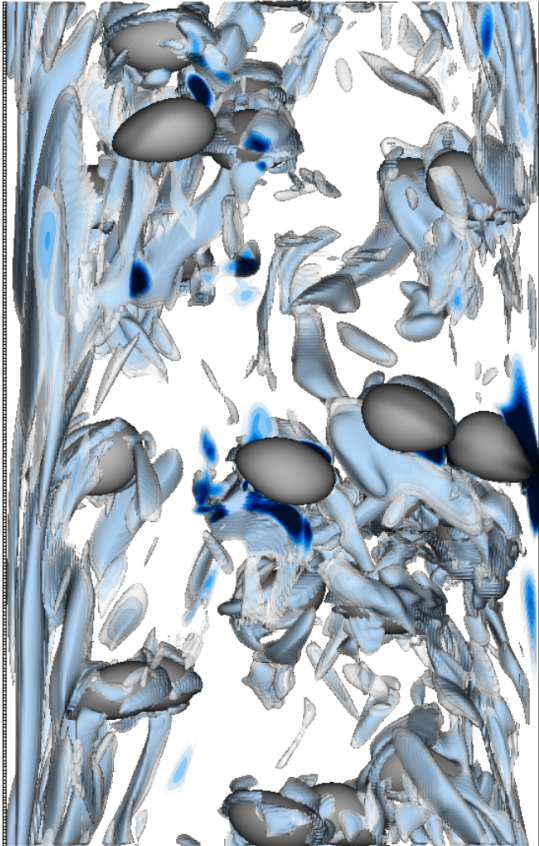




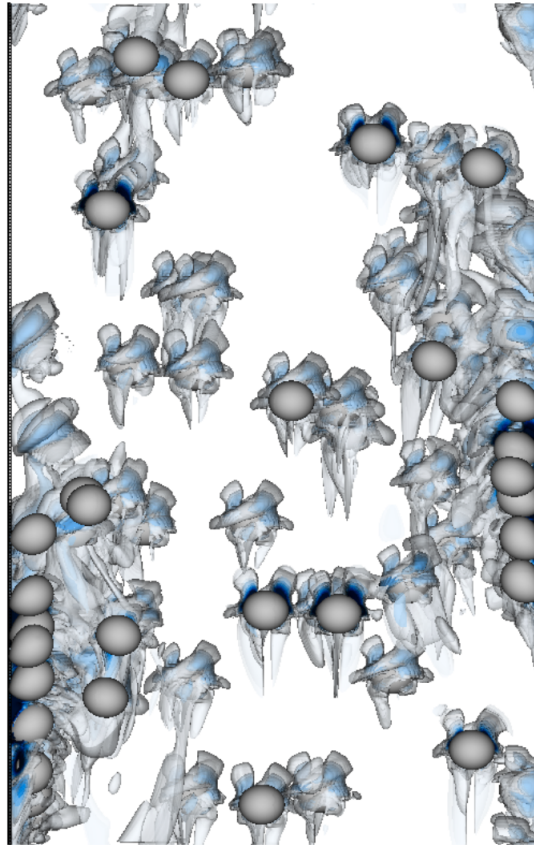
## RANS closures limitations

- Empirical correlations built on coupled mechanism simultaneously
  - Interfacial forces :
    - Drag force
    - Lift force
    - Added-mass force
    - Dispersion forces
- Point-size particle approach
  - No surface tension effects
  - One pressure closure
- Theoretical modelling based on questionable parallel with single phase flows
  - Turbulence closure
    - Single-phase turbulence
    - Wake structure
    - Wake interactions and instabilities

## SPT



## WIF+WIT

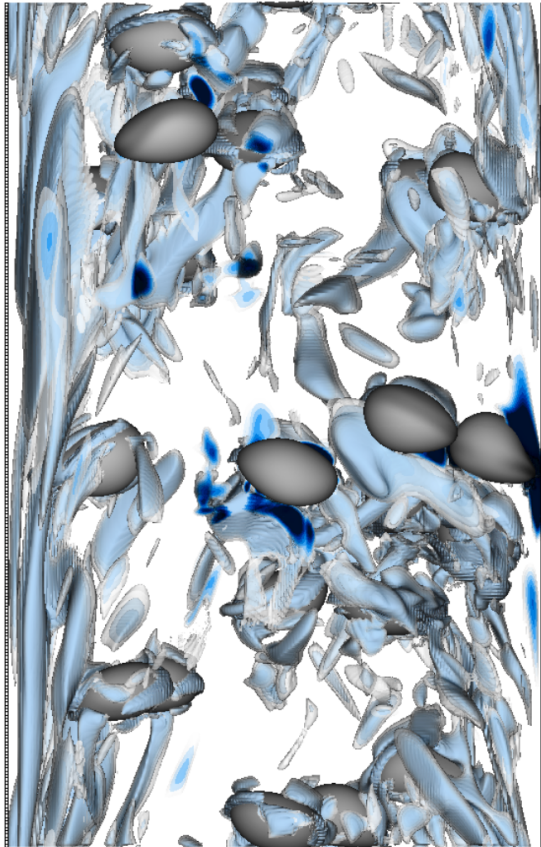


Flow led by the upward pressure gradient

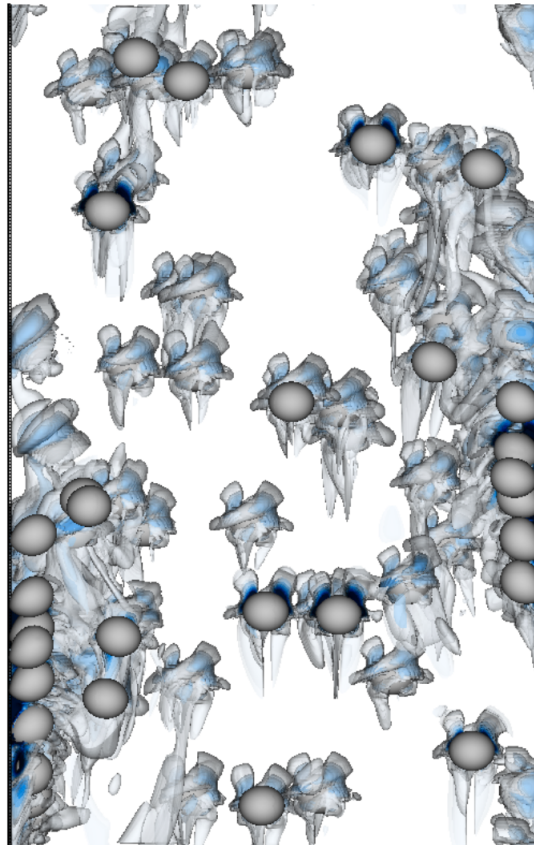
- Classical turbulence with elongated streaks
- Single Phase Turbulence (SPT) due to shear stresses at the wall
- Sufficient existing model



## SPT



## WIF+WIT



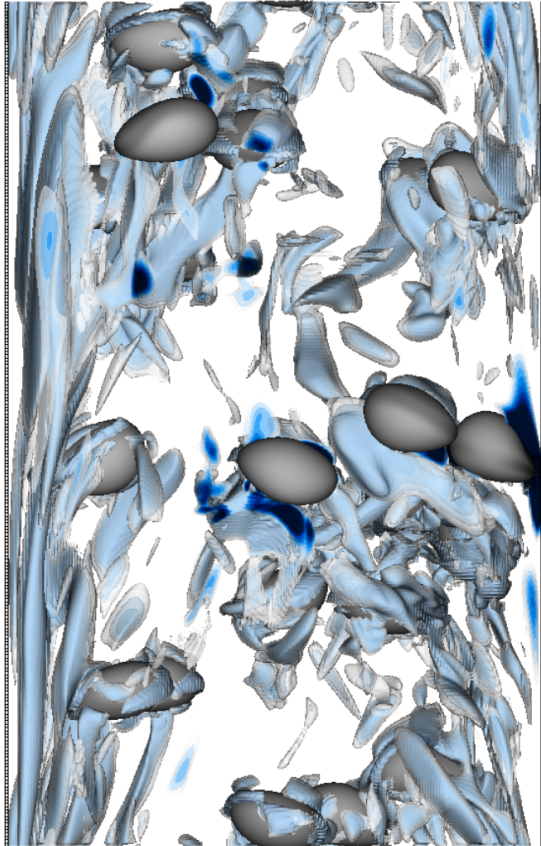
Flow led by the upward pressure gradient

- Classical turbulence with elongated streaks
- Single Phase Turbulence (SPT) due to shear stresses at the wall
- Sufficient existing model

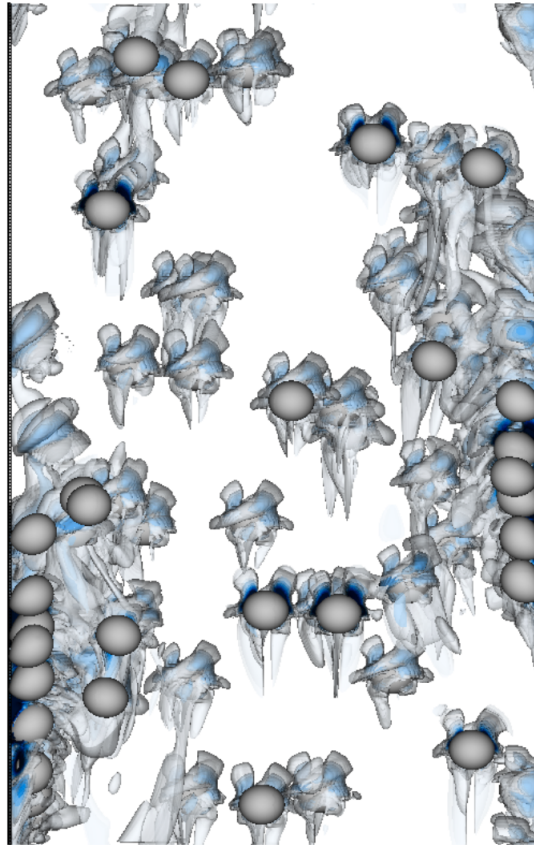
Flow led by bubbles buoyancy (WIF+WIT)

- Potential flow and averaged Wake Induced Fluctuations (WIF)
- Wake Induced Turbulence due to interactions and instabilities of wakes (WIT)
- Unsatisfactory models

## SPT



## WIF+WIT



Flow led by the upward pressure gradient

- Classical turbulence with elongated streaks
- Single Phase Turbulence (SPT) due to shear stresses at the wall
- Sufficient existing model

Flow led by bubbles buoyancy (WIF+WIT)

- Potential flow and averaged Wake Induced Fluctuations (WIF)
- Wake Induced Turbulence due to interactions and instabilities of wakes (WIT)
- Unsatisfactory models

**Modelling conclusion : Bubble turbulence cannot be modelled as a kinetic energy source term**

## Introduction

## Direct Numerical Simulations

- Governing equations

- Limitation of DNS

- Numerical setup

## Results and modelling on swarm calculations

## Local instantaneous description

- Navier-Stokes equations :

$$\frac{D\rho_k \mathbf{u}_k}{Dt} = -\nabla P_k + \rho_k \mathbf{g} + \underbrace{\nabla \cdot [\mu_k (\nabla \mathbf{u}_k + \nabla^T \mathbf{u}_k)]}_{\tau_k}$$

- Interfacial jump conditions :

$$\mathbf{u}_i^j = \mathbf{u}_v^i, \quad \sum_k (\rho_k \mathbf{n}_k - \tau_k \cdot \mathbf{n}_k) = \sigma \kappa \mathbf{n}_k$$

## Local instantaneous description

- Navier-Stokes equations :

$$\frac{D\rho_k \mathbf{u}_k}{Dt} = -\nabla P_k + \rho_k \mathbf{g} + \nabla \cdot \underbrace{[\mu_k (\nabla \mathbf{u}_k + \nabla^T \mathbf{u}_k)]}_{\tau_k}$$

- Interfacial jump conditions :

$$\mathbf{u}_i^j = \mathbf{u}_v^i, \quad \sum_k (\rho_k \mathbf{n}_k - \tau_k \cdot \mathbf{n}_k) = \sigma \kappa \mathbf{n}_k$$

## Extension to full space

- Multiply by phase indicator function :

$\chi_k = 1$  in phase  $k$ , 0 otherwise.

$$\begin{aligned} \frac{D\chi_k \rho_k \mathbf{u}_k}{Dt} = & -\nabla (\chi_k P_k) + \chi_k \rho_k \mathbf{g} + \nabla \cdot (\chi_k \tau_k) \\ & - (\rho_k \mathbf{n}_k - \tau_k \cdot \mathbf{n}_k) \cdot \nabla \chi_k \end{aligned}$$



## Local instantaneous description

- Navier-Stokes equations :

$$\frac{D\rho_k \mathbf{u}_k}{Dt} = -\nabla P_k + \rho_k \mathbf{g} + \nabla \cdot \underbrace{[\mu_k (\nabla \mathbf{u}_k + \nabla^T \mathbf{u}_k)]}_{\tau_k}$$

- Interfacial jump conditions :

$$\mathbf{u}_i^j = \mathbf{u}_v^j, \quad \sum_k (\rho_k \mathbf{n}_k - \tau_k \cdot \mathbf{n}_k) = \sigma \kappa \mathbf{n}_k$$

## Extension to full space

- Multiply by phase indicator function :  
 $\chi_k = 1$  in phase  $k$ , 0 otherwise.

$$\frac{D\chi_k \rho_k \mathbf{u}_k}{Dt} = -\nabla (\chi_k P_k) + \chi_k \rho_k \mathbf{g} + \nabla \cdot (\chi_k \tau_k) - (\rho_k \mathbf{n}_k - \tau_k \cdot \mathbf{n}_k) \cdot \nabla \chi_k$$

## One-fluid formulation

- 'one-fluid' variables :  $\phi = \sum_k \chi_k \phi_k$

$$\frac{D\rho \mathbf{u}}{Dt} = -\nabla P + \rho \mathbf{g} + \nabla \cdot [\mu (\nabla \mathbf{u} + \nabla^T \mathbf{u})] + \sigma \kappa \mathbf{n} \delta^i$$

## Local instantaneous description

- Navier-Stokes equations :

$$\frac{D\rho_k \mathbf{u}_k}{Dt} = -\nabla P_k + \rho_k \mathbf{g} + \nabla \cdot \underbrace{[\mu_k (\nabla \mathbf{u}_k + \nabla^T \mathbf{u}_k)]}_{\boldsymbol{\tau}_k}$$

- Interfacial jump conditions :

$$\mathbf{u}_i^j = \mathbf{u}_v^j, \quad \sum_k (\rho_k \mathbf{n}_k - \boldsymbol{\tau}_k \cdot \mathbf{n}_k) = \sigma \kappa \mathbf{n}_k$$

## Extension to full space

- Multiply by phase indicator function :  
 $\chi_k = 1$  in phase  $k$ , 0 otherwise.

$$\frac{D\chi_k \rho_k \mathbf{u}_k}{Dt} = -\nabla (\chi_k P_k) + \chi_k \rho_k \mathbf{g} + \nabla \cdot (\chi_k \boldsymbol{\tau}_k) - (\rho_k \mathbf{n}_k - \boldsymbol{\tau}_k \cdot \mathbf{n}_k) \cdot \nabla \chi_k$$

## One-fluid formulation

- 'one-fluid' variables :  $\phi = \sum_k \chi_k \phi_k$

$$\frac{D\rho \mathbf{u}}{Dt} = -\nabla P + \rho \mathbf{g} + \nabla \cdot [\mu (\nabla \mathbf{u} + \nabla^T \mathbf{u})] + \sigma \kappa \mathbf{n} \delta^i$$

## Definition of averaging operators

- Statistical average = temporal average :

$$\overline{\phi(x, y, z)}^{TX} = \frac{1}{\Delta t} \int_{t-\Delta t/2}^{t+\Delta t/2} \phi(x, y, z, \tau) d\tau$$

- Phase average :

$$\overline{\phi}^k = \frac{\overline{\chi_k \phi_k}^{TX}}{\overline{\chi_k}^{TX}}$$

## Local instantaneous description

- Navier-Stokes equations :

$$\frac{D\rho_k \mathbf{u}_k}{Dt} = -\nabla P_k + \rho_k \mathbf{g} + \nabla \cdot \underbrace{[\mu_k (\nabla \mathbf{u}_k + \nabla^T \mathbf{u}_k)]}_{\boldsymbol{\tau}_k}$$

- Interfacial jump conditions :

$$\mathbf{u}_i^j = \mathbf{u}_v^j, \quad \sum_k (\rho_k \mathbf{n}_k - \boldsymbol{\tau}_k \cdot \mathbf{n}_k) = \sigma \kappa \mathbf{n}_k$$

## Extension to full space

- Multiply by phase indicator function :  
 $\chi_k = 1$  in phase  $k$ , 0 otherwise.

$$\frac{D\chi_k \rho_k \mathbf{u}_k}{Dt} = -\nabla (\chi_k P_k) + \chi_k \rho_k \mathbf{g} + \nabla \cdot (\chi_k \boldsymbol{\tau}_k) - (\rho_k \mathbf{n}_k - \boldsymbol{\tau}_k \cdot \mathbf{n}_k) \cdot \nabla \chi_k$$

## One-fluid formulation

- 'one-fluid' variables :  $\phi = \sum_k \chi_k \phi_k$

$$\frac{D\rho \mathbf{u}}{Dt} = -\nabla P + \rho \mathbf{g} + \nabla \cdot [\mu (\nabla \mathbf{u} + \nabla^T \mathbf{u})] + \sigma \kappa \mathbf{n} \delta^i$$

## Definition of averaging operators

- Statistical average = temporal average :

$$\overline{\phi(x, y, z)}^{TX} = \frac{1}{\Delta t} \int_{t-\Delta t/2}^{t+\Delta t/2} \phi(x, y, z, \tau) d\tau$$

- Phase average :

$$\overline{\phi}^k = \frac{\overline{\chi_k \phi_k}^{TX}}{\overline{\chi_k}^{TX}}$$

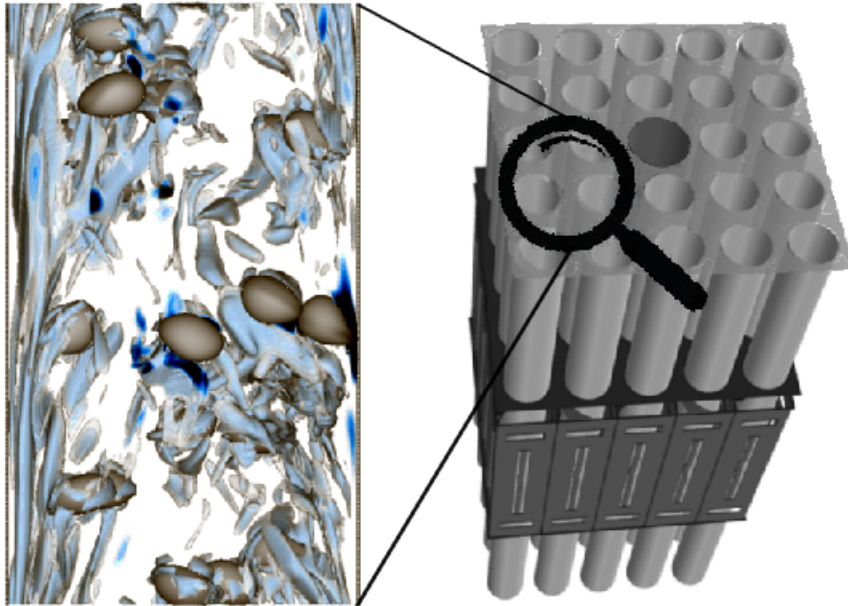
## Two-fluid averaged formulation

- Note  $\alpha_k = \overline{\chi_k}^{TX}$

$$\begin{aligned} \frac{D\alpha_k \rho_k \overline{\mathbf{u}_k}^k}{Dt} &= -\nabla (\alpha_k \overline{P_k}^k) + \alpha_k \rho_k \mathbf{g} + \nabla \cdot (\alpha_k \overline{\boldsymbol{\tau}_k}^k) \\ &+ \nabla \cdot (\alpha_k \overline{\boldsymbol{\tau}_k}^k) - \underbrace{(\rho_k \mathbf{n}_k - \boldsymbol{\tau}_k \cdot \mathbf{n}_k) \cdot \nabla \chi_k}_{\mathbf{M}_k}^{TX} \end{aligned}$$

- $\mathbf{M}_k$  is the interfacial force exerted on phase  $k$

$$\mathbf{M}_I + \mathbf{M}_V = \overline{\sigma \kappa \mathbf{n} \delta^i}^{TX}$$



## Framework hypotheses

- incompressible
- isothermal

## Limitation of DNS

- Low void fraction → to avoid coalescence (No contact line models)
- Limited Reynolds number → moderate resolution of the mesh
  - Unreachable industrial conditions for bubble columns
  - Reachable industrial conditions for bubble swarms
- Models extracted from the DNS need a posteriori validation on experiments in reactor conditions

## Physical setup

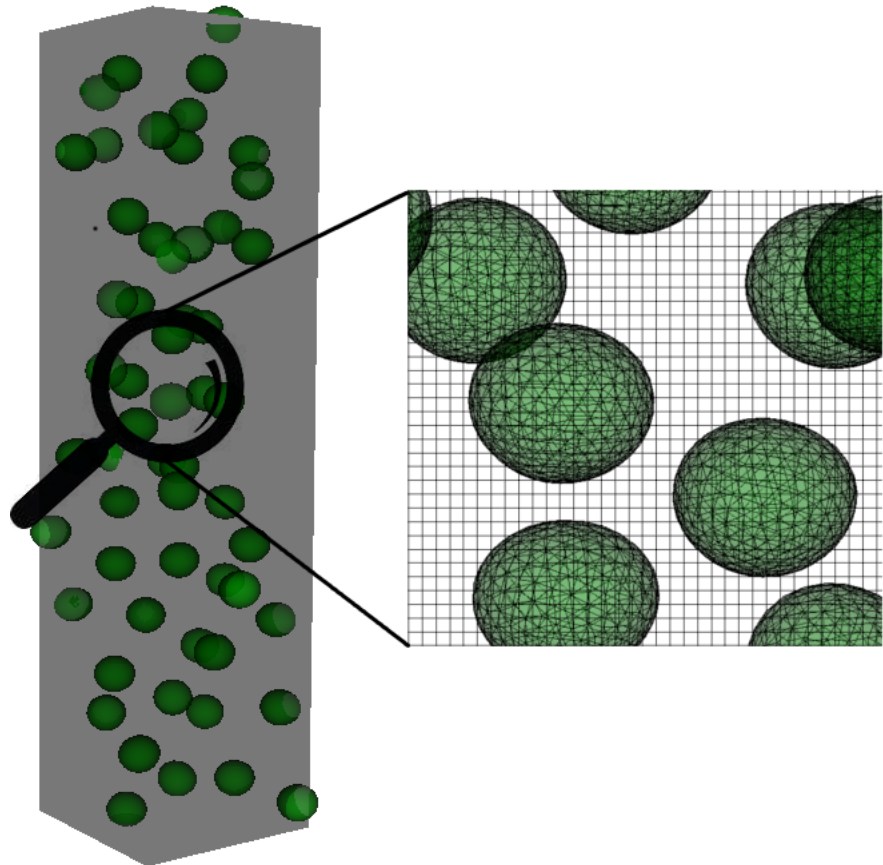
- Bubble swarm in a flow initially at rest
- Fixed bubble simulation → Spring force
- periodicity in x,y,z
- Different predefined population of bubbles
- Computation in typical reactor condition based on DEBORA experiments (freon 24 bar)
- $Re_b = 1176$  and  $Eo = 0.59$

## A Front-Tracking algorithm

- One-fluid equations are solved on an Eulerian / Cartesian mesh
- Interfaces are tracked on a Lagrangian mesh
- Validated by comparison with works of J.Lu and G.Tryggvason

## HPC calculations

- →  $\approx 80$  millions of cells
- →  $\approx 1.000.000$  h CPU a case





Introduction

Direct Numerical Simulations

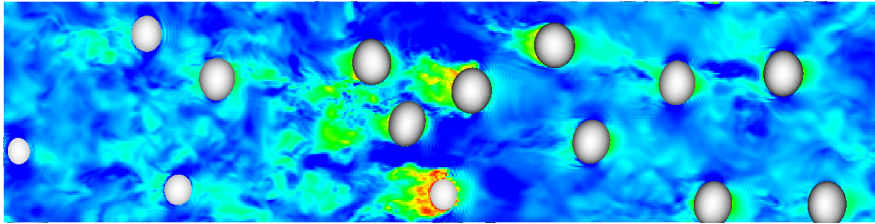
**Results and modelling on swarm calculations**

Turbulent and non turbulent fluctuations

Spectral analysis

New turbulence modelling

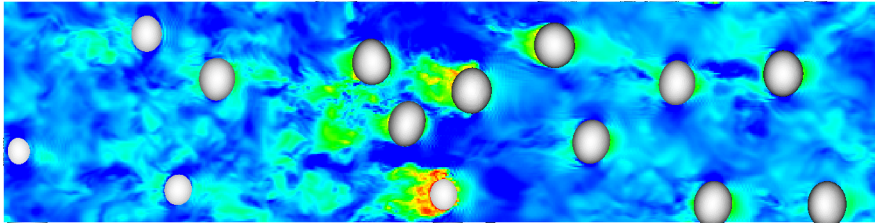
Instantaneous velocity field from DNS with  
fixed bubbles *SPT*



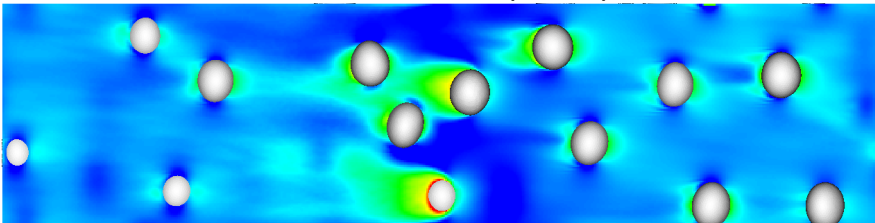
Following F. Risso et al.

- Frame of reference of bubbles
  - Fixed bubble simulations
  - Spring force
- Total fluctuations

Instantaneous velocity field from DNS with fixed bubbles *SPT*



Temporal average → Wake-induced fluctuations (WIF)



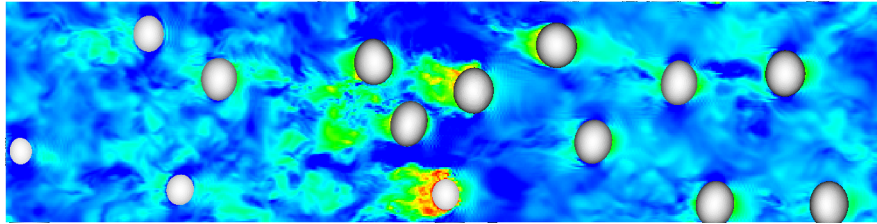
Following F. Risso et al.

- Frame of reference of bubbles
  - Fixed bubble simulations
  - Spring force
- Total fluctuations

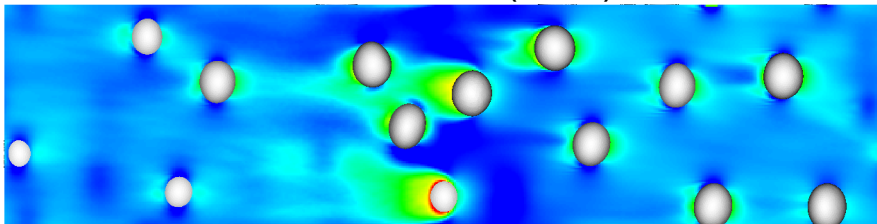
Wake Induced Fluctuations (WIF)

- Temporal average → spatial fluctuations
- Due to the averaged wake
- Due to potential flow around bubbles
- It is not turbulence !

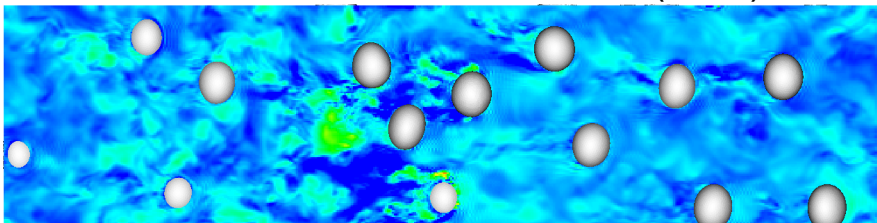
Instantaneous velocity field from DNS with fixed bubbles *SPT*



Temporal average → Wake-induced fluctuations (WIF)



Wake-induced Turbulence (WIT)



Following F. Risso et al.

- Frame of reference of bubbles  
→ Fixed bubble simulations  
→ Spring force
- Total fluctuations

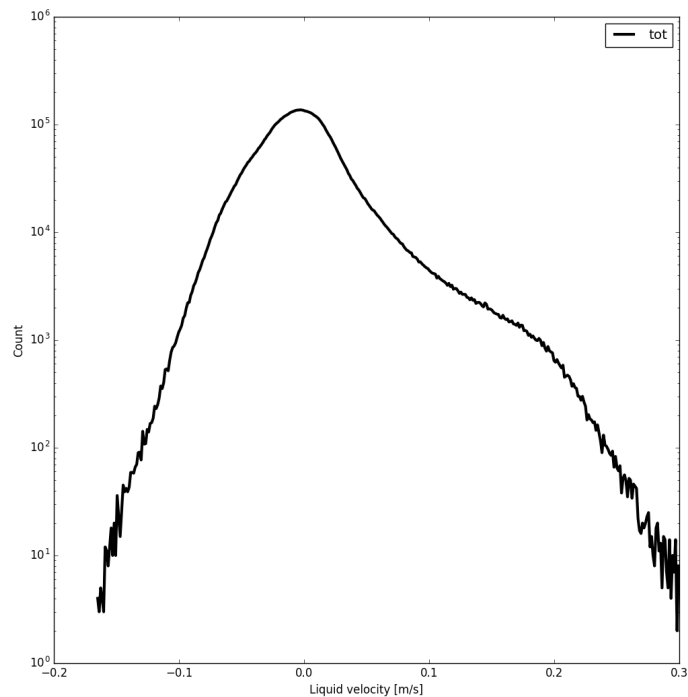
Wake Induced Fluctuations (WIF)

- Temporal average → spatial fluctuations
- Due to the averaged wake
- Due to potential flow around bubbles
- It is not turbulence !

Wake Induced Turbulence (WIT)

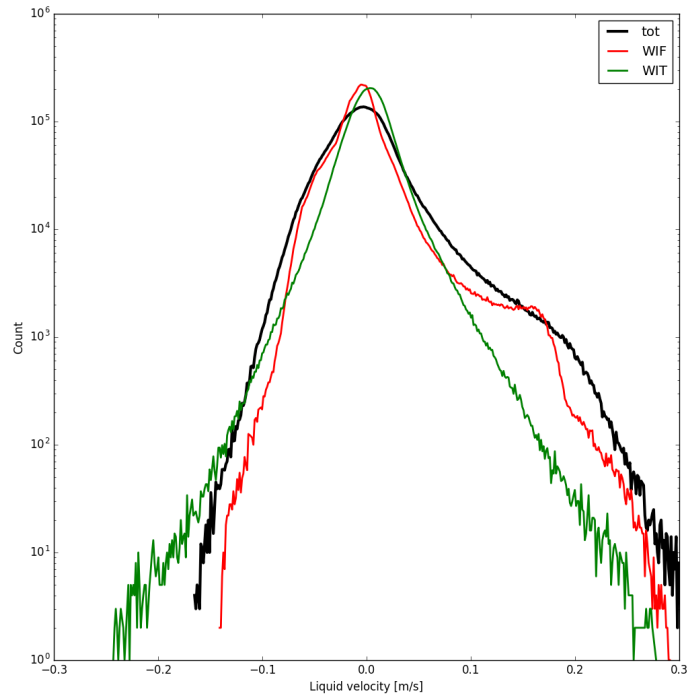
- Temporal fluctuations
- Interactions and instabilities of wakes
- Is WIT similar to classical turbulence ?

**Modelling conclusion : WIF and WIT have to be modelled separately**

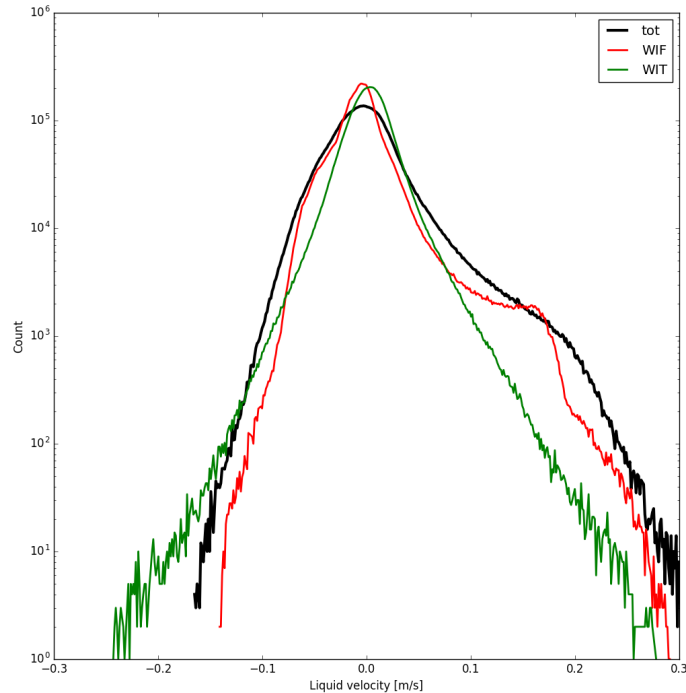


PDF of velocity fluctuations  
(On  $\approx$  8 million points )

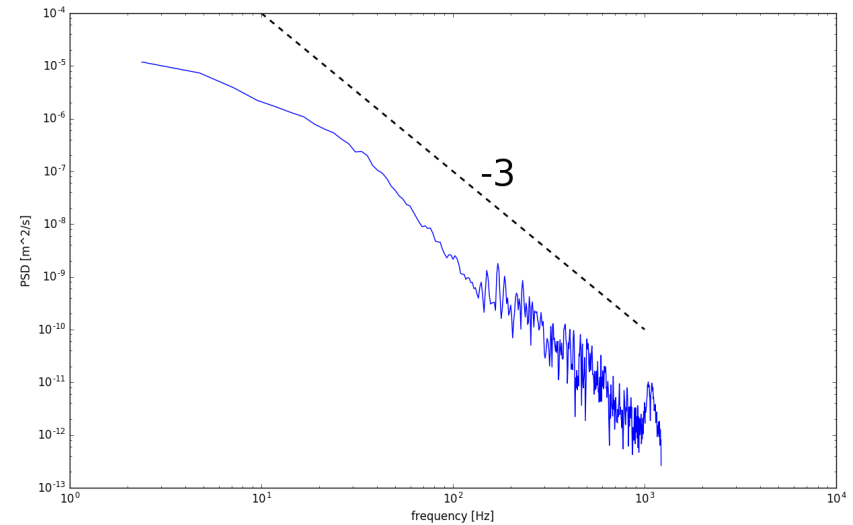




PDF of velocity fluctuations  
(On  $\approx 8$  million points)



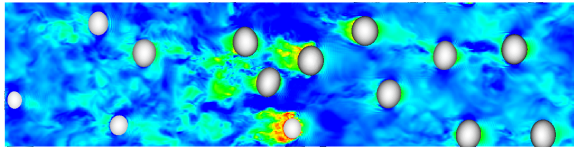
PDF of velocity fluctuations  
(On  $\approx 8$  million points)



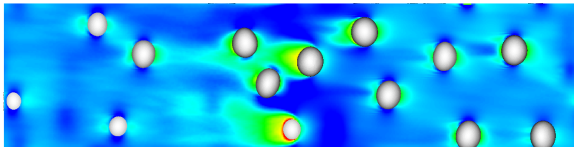
Mean temporal spectrum  
(on  $\approx 120$  probes)

**Modelling conclusion : WIT needs its own transport equation because its statistical signature is different than SPT**

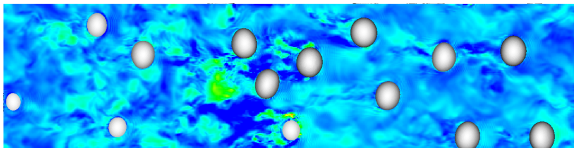
## Splitting of the fluctuations



=



+



An innovative splitting of the  $R_{ij}$  transport equation

$$\frac{DR_{ij}}{Dt} = -\mathbf{P}_{ij} + \mathbf{D}_{ij} + \phi_{ij} + \epsilon_{ij}$$

=

$$\frac{DR_{ij}^{WIF}}{Dt} = -\mathbf{P}_{ij}^X + \mathbf{D}_{ij}^X + \phi_{ij}^X + \epsilon_{ij}^X$$

+

$$\frac{DR_{ij}^{WIT}}{Dt} = -\mathbf{P}_{ij}^T + \mathbf{D}_{ij}^T + \phi_{ij}^T + \epsilon_{ij}^T$$

Exemple with the dissipation tensor

$$\epsilon_{11} = -2 \frac{\mu_l}{\rho_l} \overline{\chi_l \frac{\partial u_l}{\partial x_b} \chi_l \frac{\partial u_l}{\partial x_b}}^{TX} \quad (100\%)$$

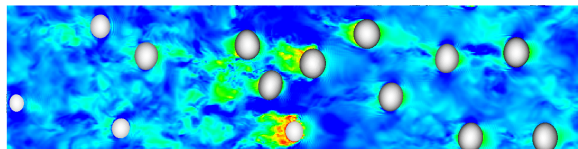
=

$$\epsilon_{11}^X = -2 \frac{\mu_l}{\rho_l} \overline{\chi_l \frac{\partial u_l}{\partial x_b} \chi_l \frac{\partial u_l}{\partial x_b}}^{TX} \quad (23\%)$$

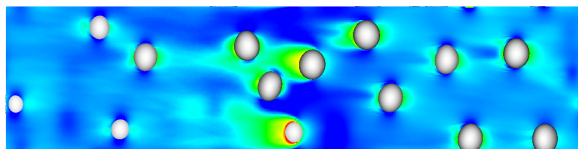
+

$$\epsilon_{11}^T = -2 \frac{\mu_l}{\rho_l} \overline{\chi_l \frac{\partial u_l'}{\partial x_b} \chi_l \frac{\partial u_l'}{\partial x_b}}^{TX} \quad (77\%)$$

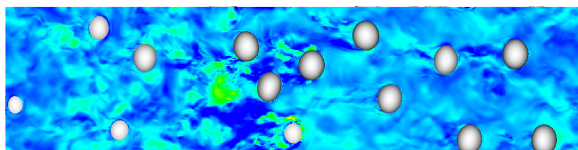
Splitting of the fluctuations



=



+



An innovative splitting of the  $R_{ij}$  transport equation

$$\frac{DR_{ij}}{Dt} = -\mathbf{P}_{ij} + \mathbf{D}_{ij} + \phi_{ij} + \epsilon_{ij}$$

=

$$\frac{DR_{ij}^{WIF}}{Dt} = -\mathbf{P}_{ij}^X + \mathbf{D}_{ij}^X + \phi_{ij}^X + \epsilon_{ij}^X$$

+

$$\frac{DR_{ij}^{WIT}}{Dt} = -\mathbf{P}_{ij}^T + \mathbf{D}_{ij}^T + \phi_{ij}^T + \epsilon_{ij}^T$$

Exemple with the dissipation tensor

$$\epsilon_{11} = -2 \frac{\mu_l}{\rho_l} \overline{\chi_l \frac{\partial u_l}{\partial x_b} \chi_l \frac{\partial u_l}{\partial x_b}^{TX}} \quad (100\%)$$

=

$$\epsilon_{11}^X = -2 \frac{\mu_l}{\rho_l} \overline{\chi_l \frac{\partial u_l}{\partial x_b} \chi_l \frac{\partial u_l}{\partial x_b}^{TX}} \quad (23\%)$$

+

$$\epsilon_{11}^T = -2 \frac{\mu_l}{\rho_l} \overline{\chi_l \frac{\partial u_l'}{\partial x_b} \chi_l \frac{\partial u_l'}{\partial x_b}^{TX}} \quad (77\%)$$

**With DNS → post-treatment of all the statistical correlations in order to find scaling laws for the interfacial production, the dissipation etc...**

## Modelling conclusion :

- 1 - BIF cannot be modelled as a kinetic energy source term
- 2 - WIF and WIT have to be modelled separately
- 3 - WIT needs its own transport equation because its statistical signature is different than SPT

## Modelling conclusion :

- 1 - BIF cannot be modelled as a kinetic energy source term
- 2 - WIF and WIT have to be modelled separately
- 3 - WIT needs its own transport equation because its statistical signature is different than SPT

## Formal summary

$$\mathbf{R}_{ij} = \mathbf{R}_{ij}^{\text{SPT}} + \mathbf{R}_{ij}^{\text{WIT}} + \mathbf{R}_{ij}^{\text{WIF}}$$

$$\frac{D\mathbf{R}_{ij}^{\text{SPT}}}{Dt} = \text{single-phase transport equation}$$

$$\frac{D\mathbf{R}_{ij}^{\text{WIT}}}{Dt} = -\mathbf{P}_{ij}^{\text{WIT}} + \mathbf{D}_{ij}^{\text{WIT}} + \phi_{ij}^{\text{WIT}} + \epsilon_{ij}^{\text{WIT}}$$

$$\mathbf{R}_{ij}^{\text{WIF}} = \text{algebraic closure}$$

- Sufficient existing models for  $\mathbf{R}_{ij}^{\text{SPT}}$

## Modelling conclusion :

- 1 - BIF cannot be modelled as a kinetic energy source term
- 2 - WIF and WIT have to be modelled separately
- 3 - WIT needs its own transport equation because its statistical signature is different than SPT

## Formal summary

$$\mathbf{R}_{ij} = \mathbf{R}_{ij}^{\text{SPT}} + \mathbf{R}_{ij}^{\text{WIT}} + \mathbf{R}_{ij}^{\text{WIF}}$$

$$\frac{D\mathbf{R}_{ij}^{\text{SPT}}}{Dt} = \text{single-phase transport equation}$$

$$\frac{D\mathbf{R}_{ij}^{\text{WIT}}}{Dt} = -\mathbf{P}_{ij}^{\text{WIT}} + \mathbf{D}_{ij}^{\text{WIT}} + \phi_{ij}^{\text{WIT}} + \epsilon_{ij}^{\text{WIT}}$$

$$\mathbf{R}_{ij}^{\text{WIF}} = \text{algebraic closure}$$

- Sufficient existing models for  $\mathbf{R}_{ij}^{\text{SPT}}$

## On going work

- Computation of bubble swarms at different void fraction and bubble Reynolds number
- Model for  $\mathbf{R}_{ij}^{\text{WIF}}$  based on previous works (F.Risso and al.) on averaged wake and potential flow solution around bubbles
- Post-treatment of all the statistical correlations of the  $\mathbf{R}_{ij}^{\text{WIT}}$  transport equation in order to find scaling laws for  $\mathbf{P}_{ij}^{\text{WIT}}$ ,  $\phi_{ij}^{\text{WIT}}$  and  $\epsilon_{ij}^{\text{WIT}}$



## Up-scaling process from DNS database

- Answer to complex industrial applications (PWR core evolution)
  - RANS Euler calculations need predictive model
  - DNS used as numerical experiments
- DNS of channel bubbly flows (not presented here)
  - Lots of data available for processing
  - Already used to model interfacial forces
- DNS of swarms with fixed bubbles for the study of bubble-induced turbulence
  - (prospect) Characterise the impact of fixed bubbles
  - (prospect) Comparison with calculation of free bubbles
  - (prospect) Parametric analysis with different Reynolds number and different void fraction

## Up-scaling process from DNS database

- Answer to complex industrial applications (PWR core evolution)
  - RANS Euler calculations need predictive model
  - DNS used as numerical experiments
- DNS of channel bubbly flows (not presented here)
  - Lots of data available for processing
  - Already used to model interfacial forces
- DNS of swarms with fixed bubbles for the study of bubble-induced turbulence
  - (prospect) Characterise the impact of fixed bubbles
  - (prospect) Comparison with calculation of free bubbles
  - (prospect) Parametric analysis with different Reynolds number and different void fraction

## Turbulence modelling

- Bubble-induced turbulence is different than single-phase turbulence
  - Bubble-induced turbulence has a part of turbulent fluctuation (WIT) and a part of non turbulent fluctuations (WIF)
  - WIF is related to the averaged wake and to the potential flow around bubble
  - WIT is related to wakes interactions and instabilities
- Those three fluctuations have to be modelled separately
  - SPT : classical transport equation
  - (prospect) WIT : new transport equation modelling
  - (prospect) WIF : algebraic closure

# Thank you for your attention !

The authors would like to convey their sincere thanks to GENCI and the TGCC for providing the necessary computational resources to perform DNS calculations. This work was granted access to the HPC resources of TGCC under the allocation x20162b7712 made by GENCI.

Commissariat à l'énergie atomique et aux énergies alternatives  
Centre de Saclay | 91191 Gif-sur-Yvette Cedex  
T. +33 (0)1 69 08 72 20

Direction DEN/DANS  
Département DM2S  
Service STMF