



**HAL**  
open science

## Study of the influence of the initial pH on the aqueous corrosion of an Al-Mg-Si alloy at 70°C

S. L'Haridon-Quaireau, K. Colas, B. Kapusta, D. Gosset, S. Delpech

► **To cite this version:**

S. L'Haridon-Quaireau, K. Colas, B. Kapusta, D. Gosset, S. Delpech. Study of the influence of the initial pH on the aqueous corrosion of an Al-Mg-Si alloy at 70°C. ICAA16 - 16th International Congress of Aluminium Alloys, Jun 2018, Montreal, Canada. cea-02338588

**HAL Id: cea-02338588**

**<https://cea.hal.science/cea-02338588>**

Submitted on 21 Feb 2020

**HAL** is a multi-disciplinary open access archive for the deposit and dissemination of scientific research documents, whether they are published or not. The documents may come from teaching and research institutions in France or abroad, or from public or private research centers.

L'archive ouverte pluridisciplinaire **HAL**, est destinée au dépôt et à la diffusion de documents scientifiques de niveau recherche, publiés ou non, émanant des établissements d'enseignement et de recherche français ou étrangers, des laboratoires publics ou privés.

DE LA RECHERCHE À L'INDUSTRIE



[www.cea.fr](http://www.cea.fr)

# Study of the influence of initial pH on the aqueous corrosion of an Al-Mg-Si alloy at 70°C

16th International Conference on Aluminium Alloys,  
17- 22th June 2018 , Montreal, Canada

S. L'HARIDON-QUAIREAU, K. COLAS, B. KAPUSTA, D. GOSSET

*Département des Matériaux pour le Nucléaire, CEA Saclay,  
Université Paris Saclay  
91 191 Gif sur Yvette Cedex - France*

S. DELPECH

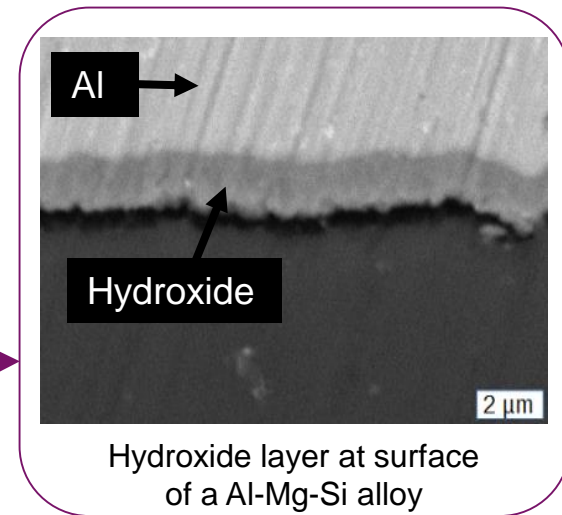
*Institut de Physique Nucléaire d'Orsay,  
15 rue Georges Clemenceau, 91406 Orsay Cedex - France*

**Goal of PhD project :** understand and predict corrosion of an Al-Mg-Si alloy used in nuclear research reactors

**Example of environmental conditions in core :**

- Temperature : 70°C
- Pressure : 12 bar
- pH : between 5 and 7
- Water flow rate : 8 m/s

⇒ Harsh environmental conditions = formation of hydroxide layer at surface of aluminium alloy



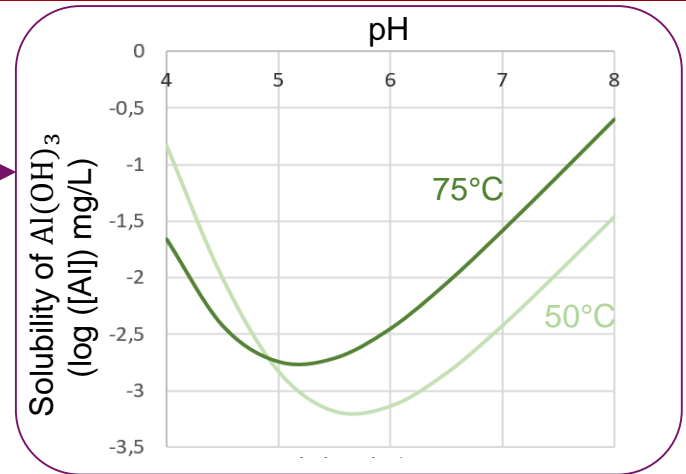
**Factors impacting aluminium alloys corrosion :**

- Temperature
- Water chemistry → Effect of the pH ?
- Water flow rate
- Pressure

⇒ Study of these impacts in order to minimize aluminium alloys corrosion

## Why study the effect of pH ?

- ⇒ Influence [Al] in solution
- ⇒ Effect on growth of aluminium hydroxide [1]
- ⇒ Optimisation of pH in order to limit corrosion of aluminium alloy



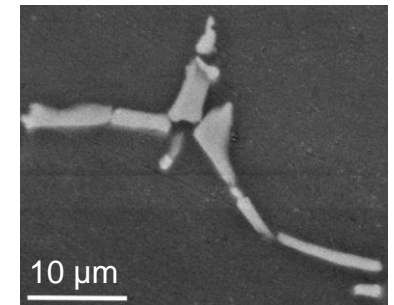
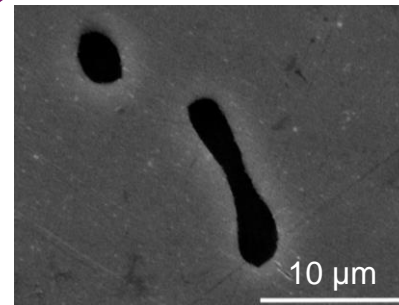
## 6061-T6 aluminium alloy studied :

- Chemical composition (wt. %) :

Element	Si	Fe	Cu	Mn	Mg	Cr	Al
Min	0,4	-	0,15	-	0,8	0,04	Balance
Max	0,8	0,7	0,4	0,15	1,2	0,35	

- Two micrometric precipitate families :

- Mg<sub>2</sub>Si particles
- Iron-rich precipitates

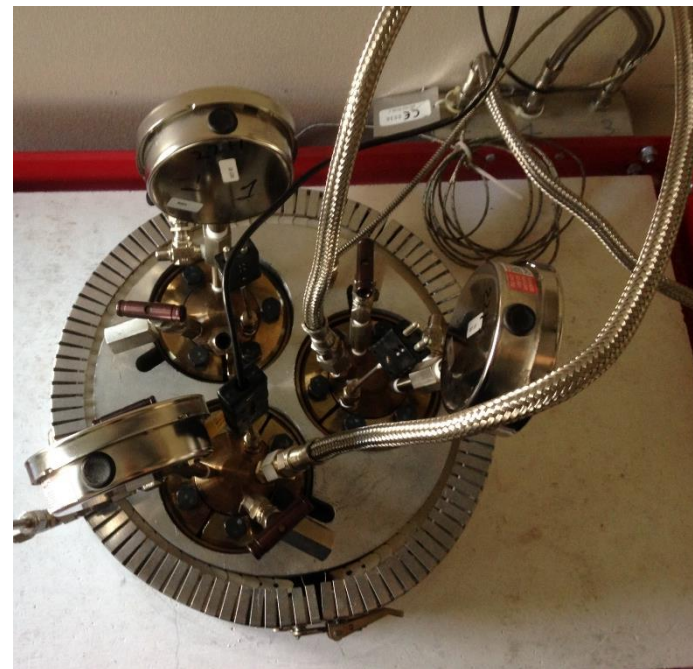


Cross section of Mg<sub>2</sub>Si (SEM)

Cross section of IRP (SEM)

### Corrosion in autoclaves :

- 316L steel autoclaves, 0,16L, coated in Teflon
  - 70°C, 0,5 bar, 33 days
  - Three corrosive solutions :
    - pH = 5
    - pH = 6
    - Deionised water
- Nitric acid + deionised water



*The three autoclaves used*

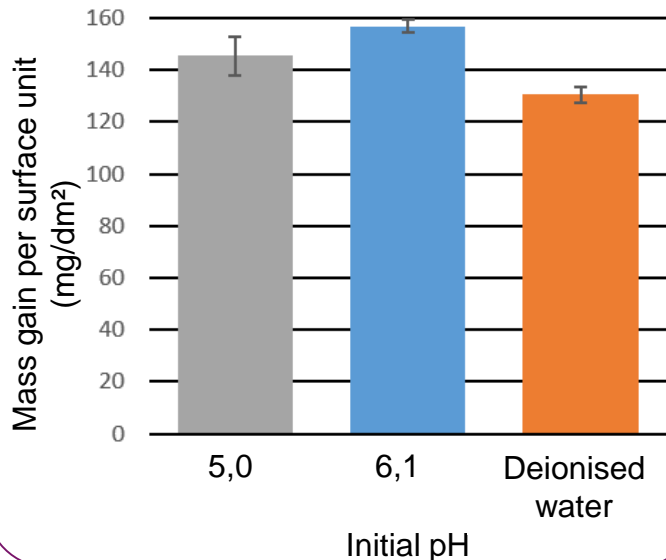
**Limit** : released Al in solution :  $Al + 3H^+ \leftrightarrow \frac{3}{2} H_2 + Al^{3+}$

⇒ pH increases

⇒ But : 65mL of solution = > saturation of  $Al^{3+}$

⇒ Equal final pH (6,7)

Confirmation of initial pH effect on mass gain of samples :



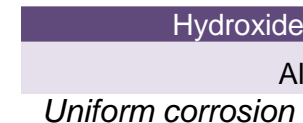
## On what is the effect of initial pH ?

### 1 Effect on released Al in solution ?

Initial pH	5,0	6,1	Deionised water
Al content (mg/L)	0,2 ±0,04	0,12 ±0,04	0,2 ±0,04
Released Al (mg/dm <sup>2</sup> )	0,09 ±0,02	0,06 ±0,02	0,09 ±0,02

⇒ **Insignificant effect**

### 2 Uniform corrosion ?



### 3 Corrosion of Mg<sub>2</sub>Si particles ?



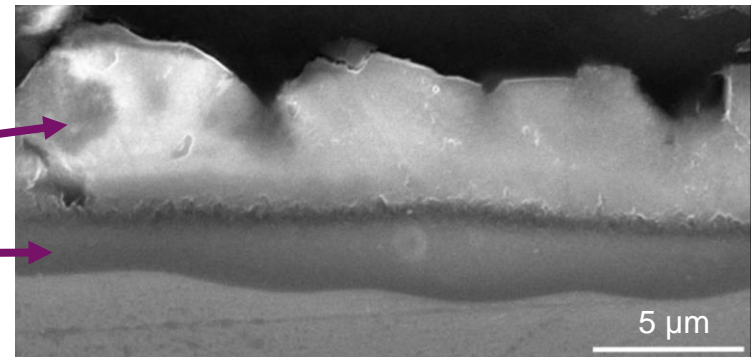
### 4 Corrosion due to iron-rich precipitates (IRP) ?



# 1. UNIFORM CORROSION (1/2)

**Corrosion product at 70°C = two layers of different aluminium hydroxide [1] :**

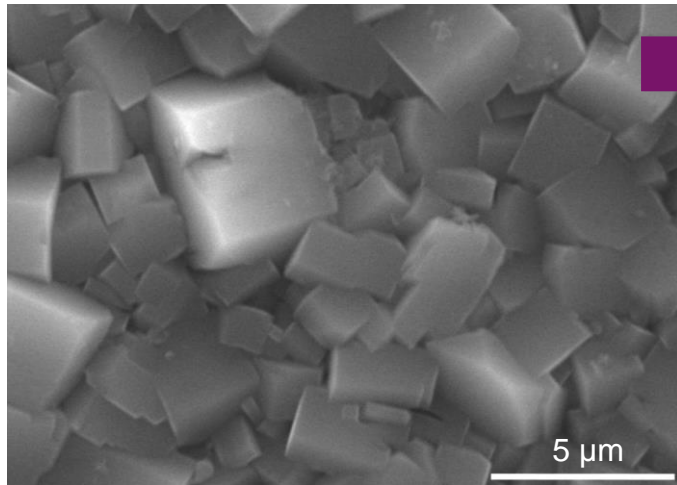
- Bayerite ( $\alpha - \text{Al}(\text{OH})_3$ )
- Pseudo-boehmite ( $\text{AlOOH}$ )



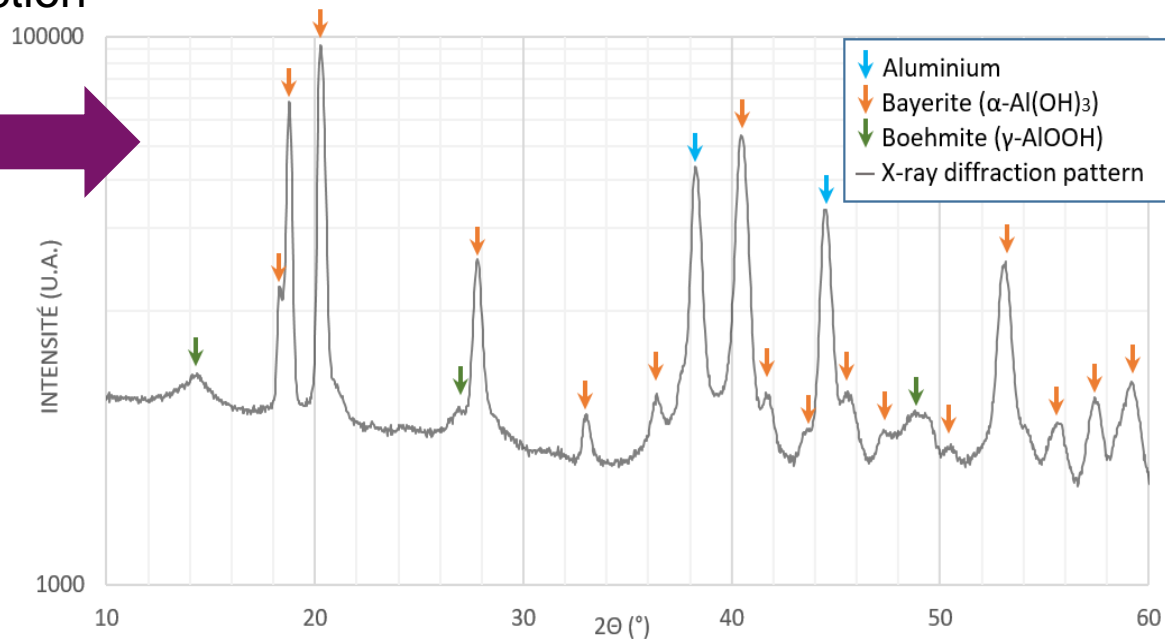
*Cross section of aluminium hydroxide (SEM)*

**Characterizations :**

- Grazing incidence X-ray diffraction



*Aluminium hydroxide at surface of sample (SEM)*

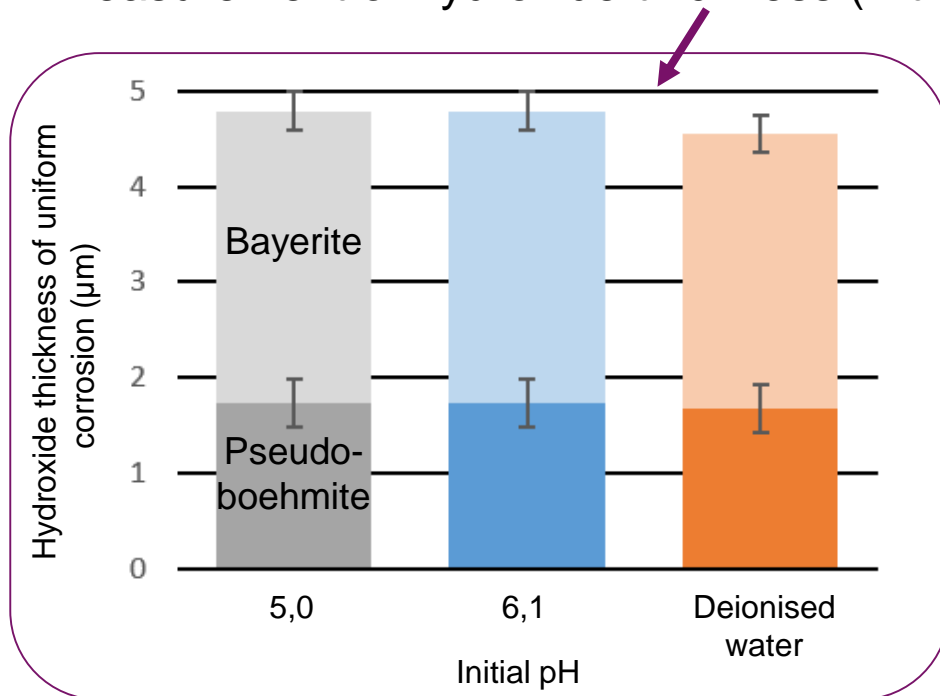


*X-ray diffraction pattern of hydroxide layers*

# 1. UNIFORM CORROSION (2/2)

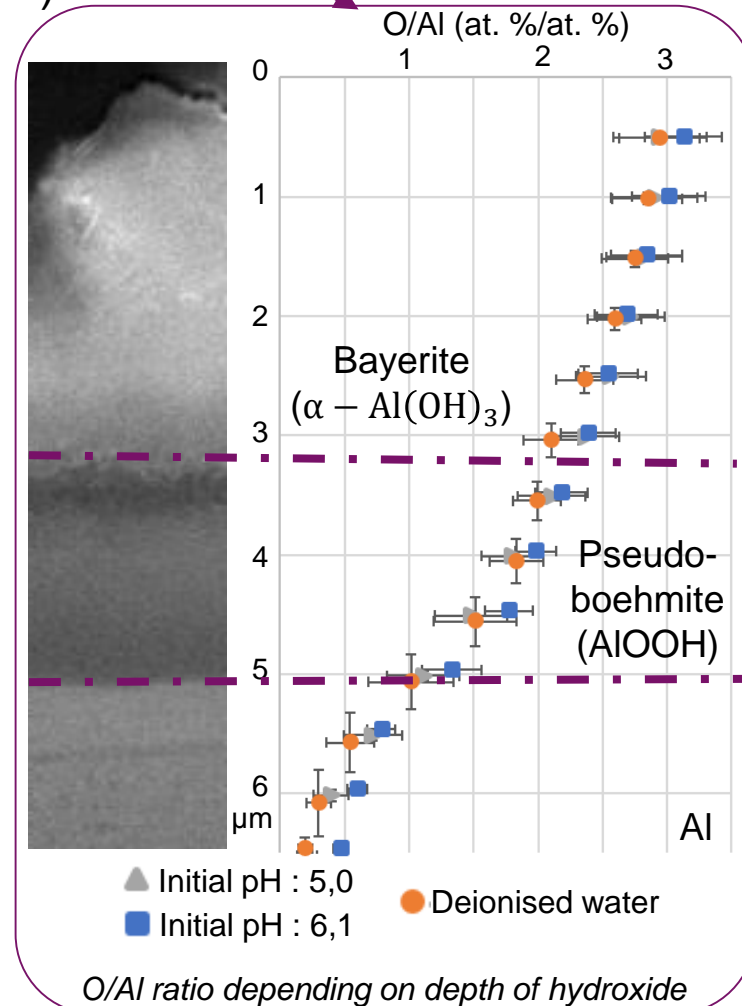
## Characterisations :

- Measurement of O/Al ratio depending on depth of hydroxide (by EDS-SEM)
- Measurement of hydroxide thickness (with SEM)



⇒ No effect of the initial pH on :

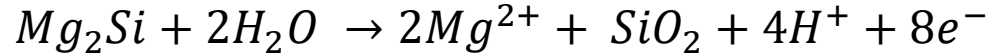
- Cristal size
- O/Al ratio
- Hydroxide thickness





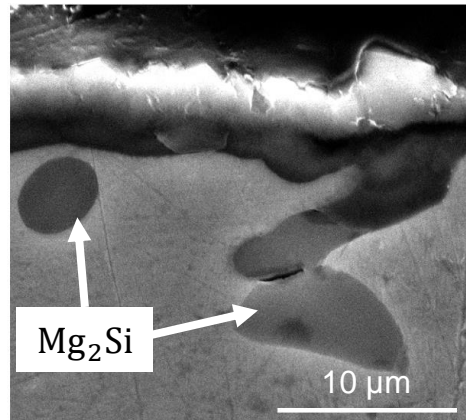
## 2. CORROSION OF $Mg_2Si$ PRECIPITATES

Equation associated to corrosion of  $Mg_2Si$  [2] :

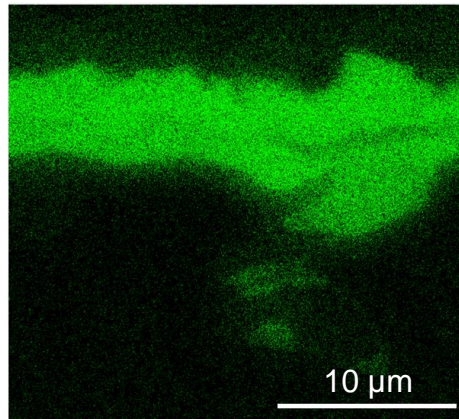


### Characterizations :

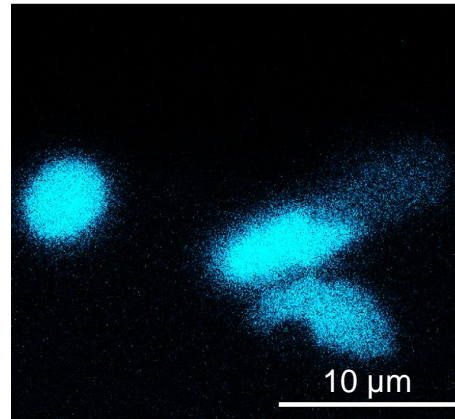
- Maps of chemical elements O, Mg and Si (with EDS-SEM) :



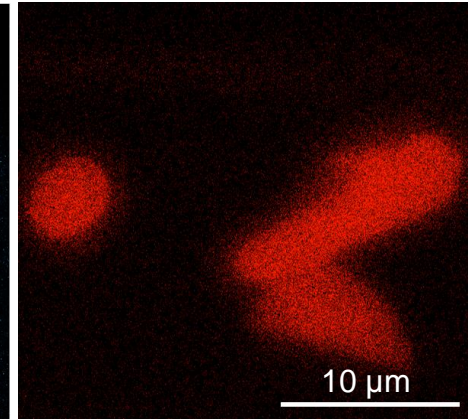
Cross section of  $Mg_2Si$  (SEM)



Map of oxygen



Map of magnesium



Map of silicon

- Measurement of the  $Mg^{2+}$  content in solution (by ICP-AES) :

Initial pH	5,0	6,1	Deionized water
$Mg^{2+}$ content (mg/L)	$0,52 \pm 0,02$	$0,53 \pm 0,02$	$0,52 \pm 0,02$

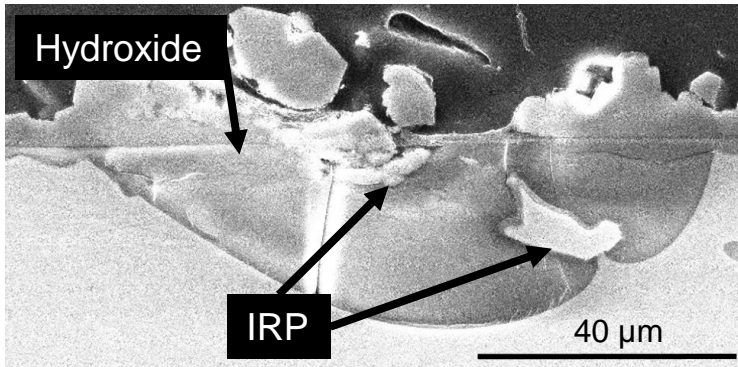
⇒ No effect of the initial pH on  $Mg^{2+}$  content in solution

# 3. CORROSION DUE TO IRON-RICH PRECIPITATES (1/3)

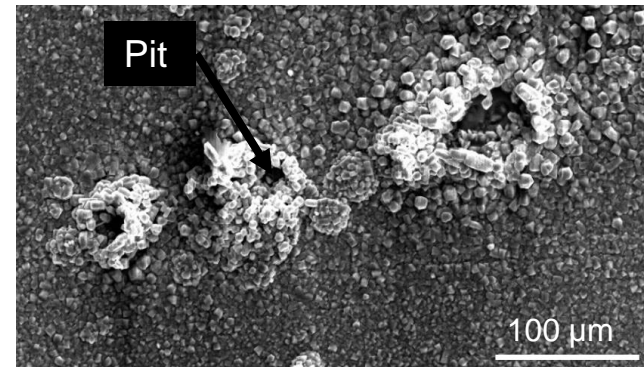
**Iron-rich precipitates (IRP) = local cathodes** (hydrogen and oxygen reduction)

⇒ IRP accelerate Al oxidation

⇒ Formation of hydroxide pits



Cross section of a pit (SEM)

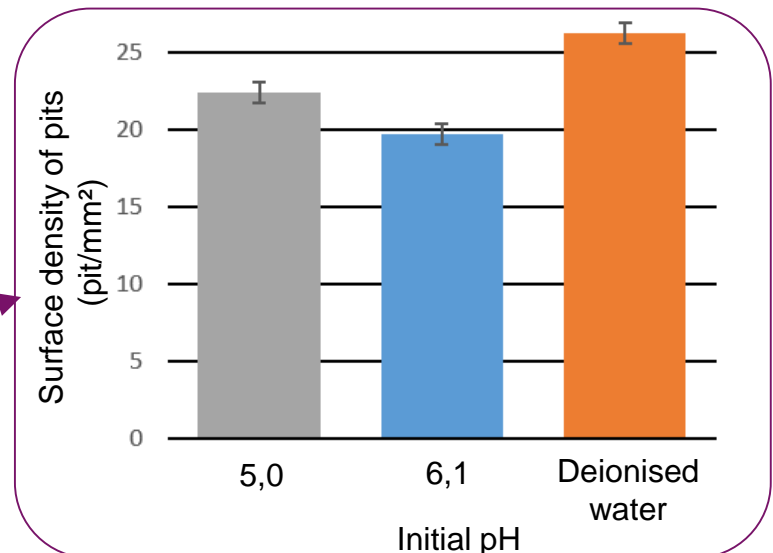


Pits at surface of sample (SEM)

**Characterizations** : measurement of :

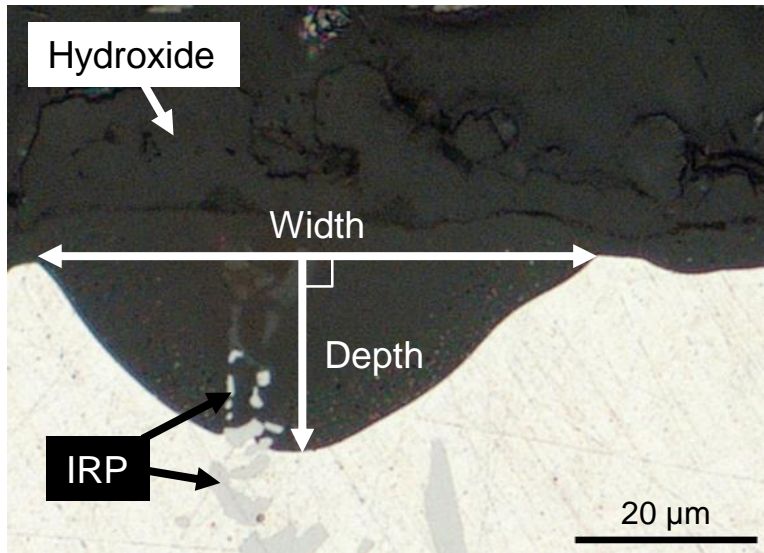
- Surface occupied by pits
- Surface density of pits

⇒ **Effect of initial pH on surface density**  
**But similar occupied surface (14%)**

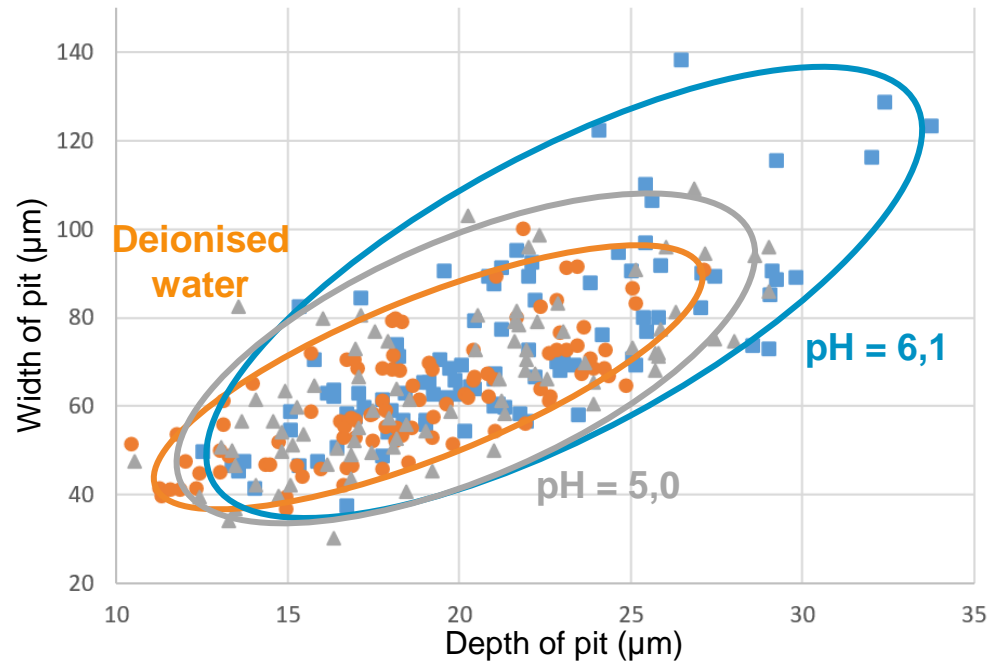


# 3. CORROSION DUE TO IRON-RICH PRECIPITATES (2/3)

**Initial pH=6,1** : less pits per surface unit  
 ⇒ Measurement of width and depth of pit



*Cross section of pit (OM)*



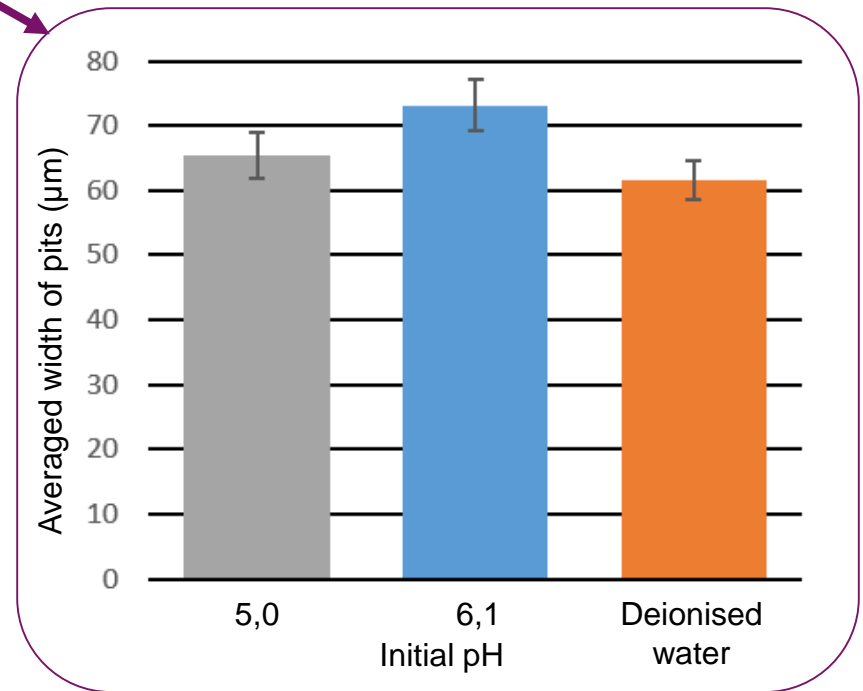
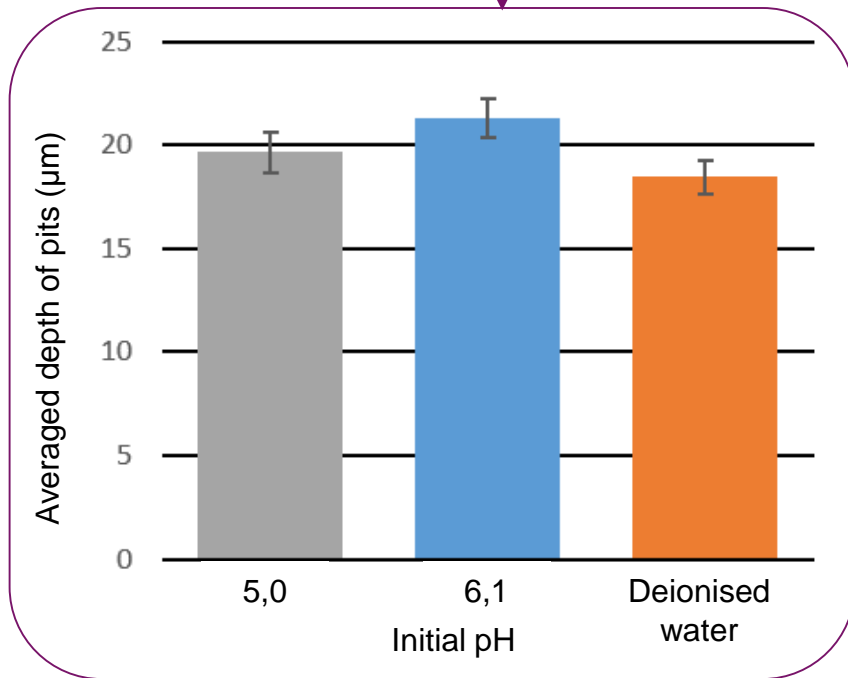
⇒ **Initial pH=6,1** : widest and deepest pits

### 3. CORROSION DU TO IRON-RICH PRECIPITATES (IRP) (3/3)

**Initial pH=6,1** : less pits per surface unit

⇒ Measurement of width and depth of pit

⇒ pH=6,1 : averaged depth and width of pits = most important



⇒ **Effect of initial pH on pit :**  
Most oxidised Al at initial pH=6,1

Corrosion tests with three initial pH on 6061-T6 aluminium alloy :

- 5,0
  - 6,1
  - Deionised water
- Nitric acid + deionised water

⇒ Limit : equal final pH (6,7)

**No effect of initial pH on :**

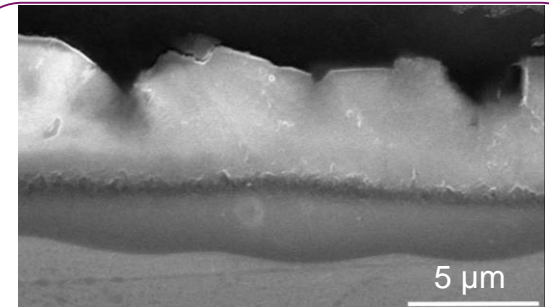
- Uniform corrosion
- Corrosion of  $Mg_2Si$  precipitates

**Effect of initial pH on galvanic corrosion between iron-rich precipitates (IRP) and Al :**

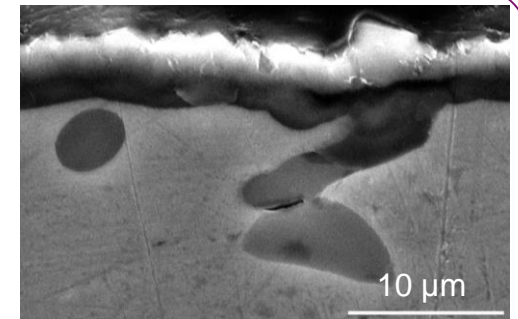
⇒ At initial pH =6,1, most oxidised Al, widest and deepest pits of hydroxide

**Further studies :** study of the beginning of the galvanic corrosion IRP/Al

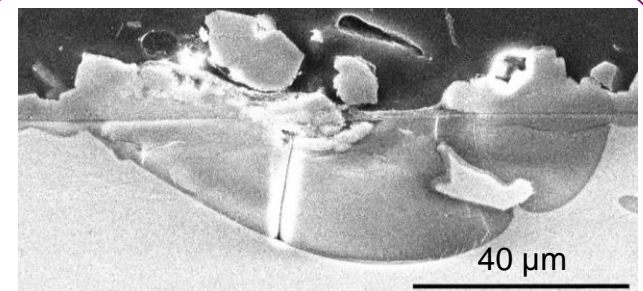
⇒ Short time of corrosion (1-3-7-10d.)



*Cross section of aluminium hydroxide of uniform corrosion (SEM)*



*Cross section of  $Mg_2Si$  (SEM)*



*Cross section of pit (SEM)*

Thank you for your attention

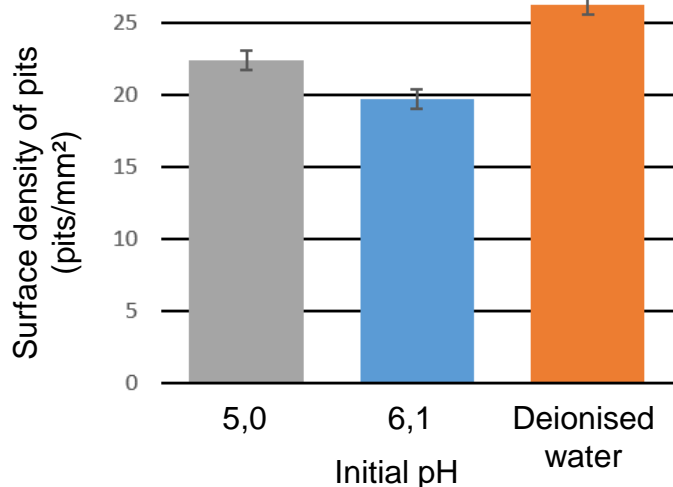
[1] M. Wintergerst, 'Etude des mécanismes et des cinétiques de corrosion aqueuse de l'alliage d'aluminium AlFeNi utilisé comme gainage du combustible nucléaire de réacteurs expérimentaux.', Thèse de doctorat, Université Paris XI, U.F.R. Scientifique d'orsay, Saclay, 2010.

[2] M. A. Pech-Canul, R. Giridharagopal, M. I. Pech-Canul, and E. E. Coral-Escobar, 'Corrosion Characteristics of an Al-1.78%Si-13.29%Mg Alloy in Chloride Solutions', presented at the ICAA13: 13th International Conference on Aluminum Alloys (eds H. Weiland, A. D. Rollett and W. A. Cassada), 2012.

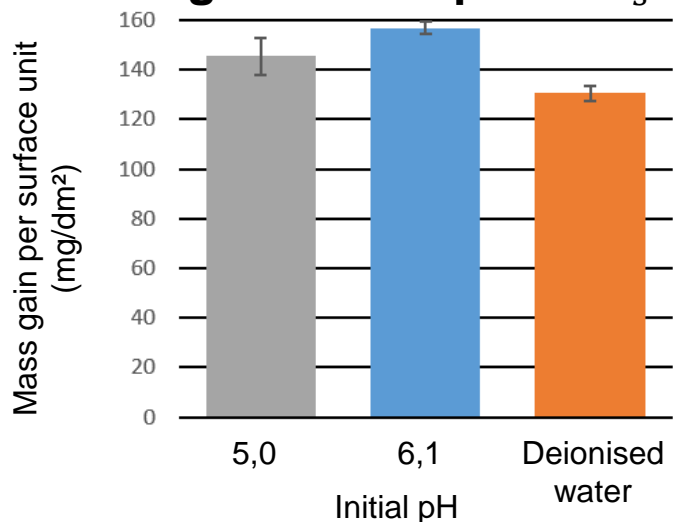
# 3. CORROSION DUE TO IRON-RICH PRECIPITATES (2/4)

## Effect of initial pH on :

- Surface density of pits  $N_{pits}$

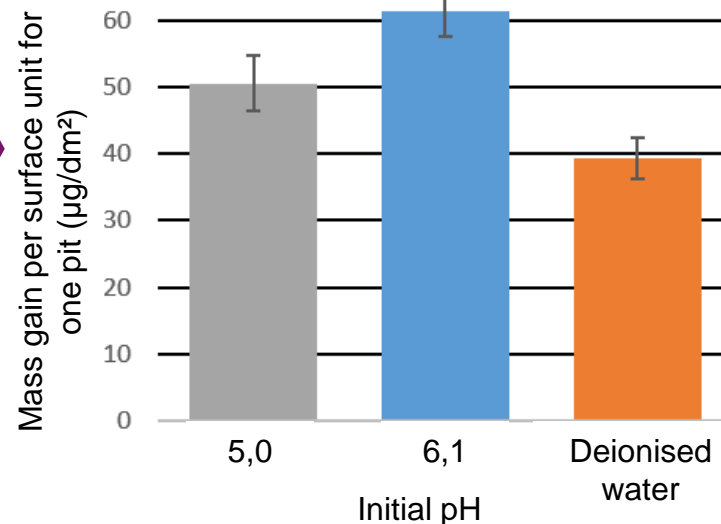


- Mass gain of samples  $\Delta m_s$



$$\Delta m_{pits} = f(N_{pits}, \Delta m_s)$$

=> Mass gain per surface unit for one pit :



⇒ Initial pH=6,1 : most mass gain by pit  
⇒ Most oxidised Al at initial pH=6,1

$$\Delta m_{pits} = \frac{1}{N_{pits} S_{pits}} \left[ \Delta m_s - \left( E_{Al(OH)_3} d_{Al(OH)_3} \frac{M_{3OH}}{M_{Al(OH)_3}} + E_{AlOOH} d_{AlOOH} \frac{M_{OOH}}{M_{AlOOH}} \right) * (1 - x) \right]$$