



**HAL**  
open science

## **1 $\mu$ s FMCW reflectometry for plasma density and fluctuation profile measurements**

F. Clairet, C. Bottereau, A. Medvedeva, D. Molina, G Conway, U. Stroth

► **To cite this version:**

F. Clairet, C. Bottereau, A. Medvedeva, D. Molina, G Conway, et al.. 1  $\mu$ s FMCW reflectometry for plasma density and fluctuation profile measurements. International reflectometry workshop, May 2019, Lausanne, Switzerland. cea-02289076

**HAL Id: cea-02289076**

**<https://cea.hal.science/cea-02289076>**

Submitted on 16 Sep 2019

**HAL** is a multi-disciplinary open access archive for the deposit and dissemination of scientific research documents, whether they are published or not. The documents may come from teaching and research institutions in France or abroad, or from public or private research centers.

L'archive ouverte pluridisciplinaire **HAL**, est destinée au dépôt et à la diffusion de documents scientifiques de niveau recherche, publiés ou non, émanant des établissements d'enseignement et de recherche français ou étrangers, des laboratoires publics ou privés.

DE LA RECHERCHE À L'INDUSTRIE



[www.cea.fr](http://www.cea.fr)

# 1 $\mu$ s FMCW reflectometry for plasma density and fluctuation profile measurements

F. Clairet<sup>1</sup>, C. Bottereau<sup>1</sup>, A. Medvedeva<sup>1,2</sup>, D. Molina<sup>1</sup>  
G. Conway<sup>2</sup>, U. Stroth<sup>2, 3</sup>

<sup>1</sup> IRFM-CEA (Cadarache, France)

<sup>2</sup> Max Planck IPP (Garching, Germany)

<sup>3</sup> Physik-Department, TUM (Garching, Germany)

IRW 14 Meeting  
Lausanne (May 22-24 2019)

**1997** : Ka band / O-mode / Heterodyne / sweep time : 1 ms → 10  $\mu$ s

**2002** : V&W bands / X-mode / 10  $\mu$ s

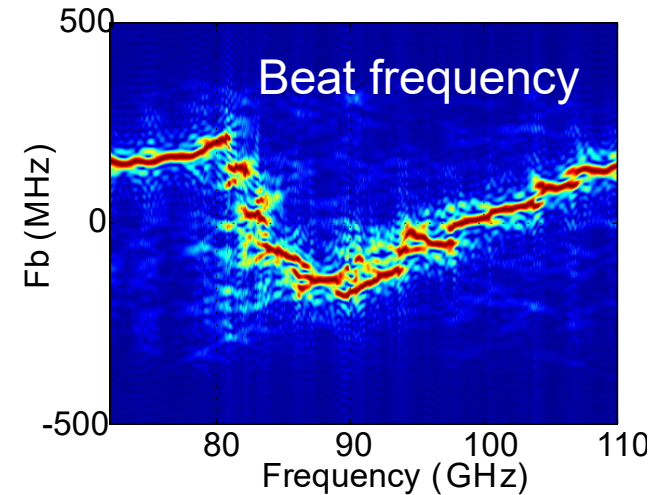
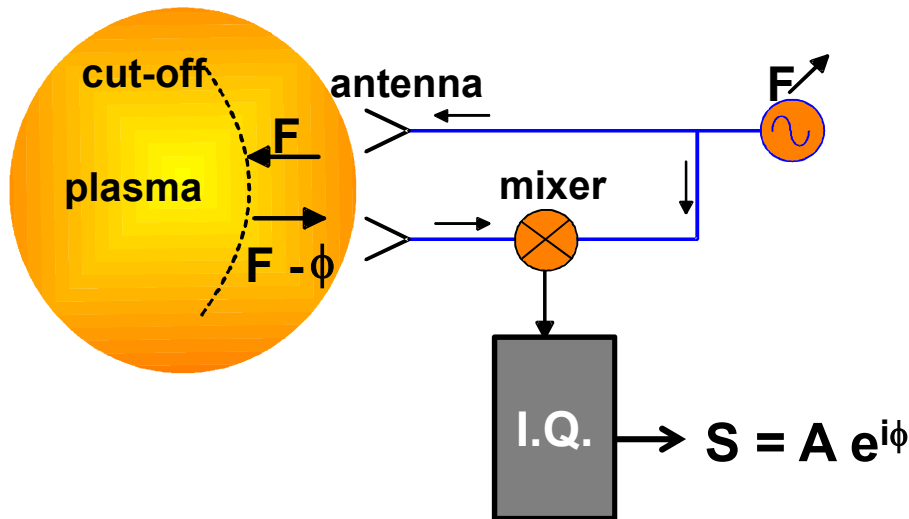
**2007** : 2  $\mu$ s (dead time 1 $\mu$ s)

**2014** : 1  $\mu$ s (0.25 $\mu$ s)

*(due to TS shutdown the reflectometers were moved to AUG)*

**2016** : Reflectometer back to Tore Supra (now WEST)...

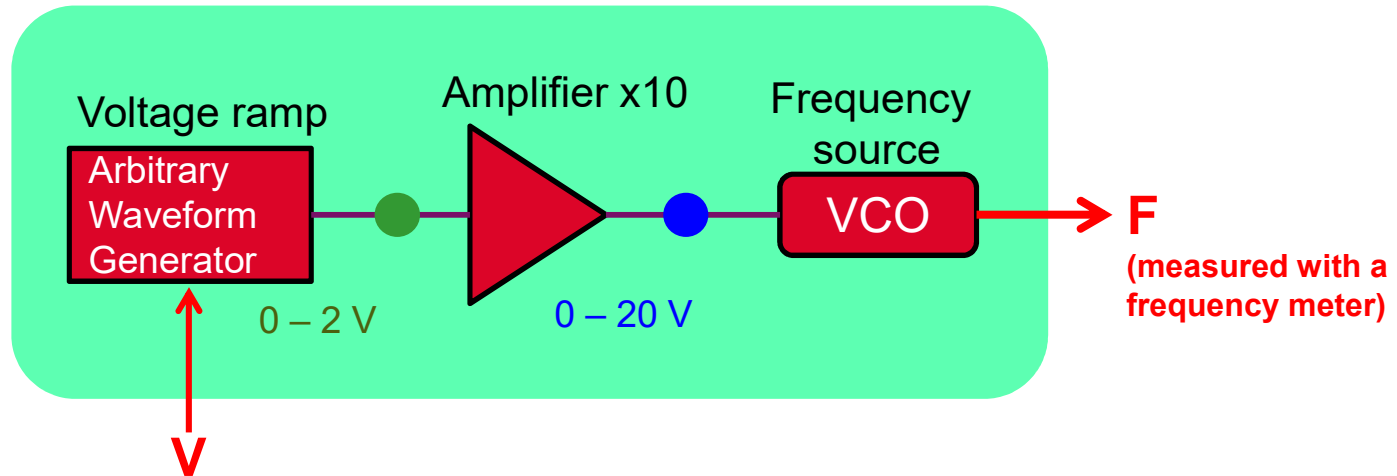
The probing wave is reflected when  $F = F_{\text{cut-off}}$



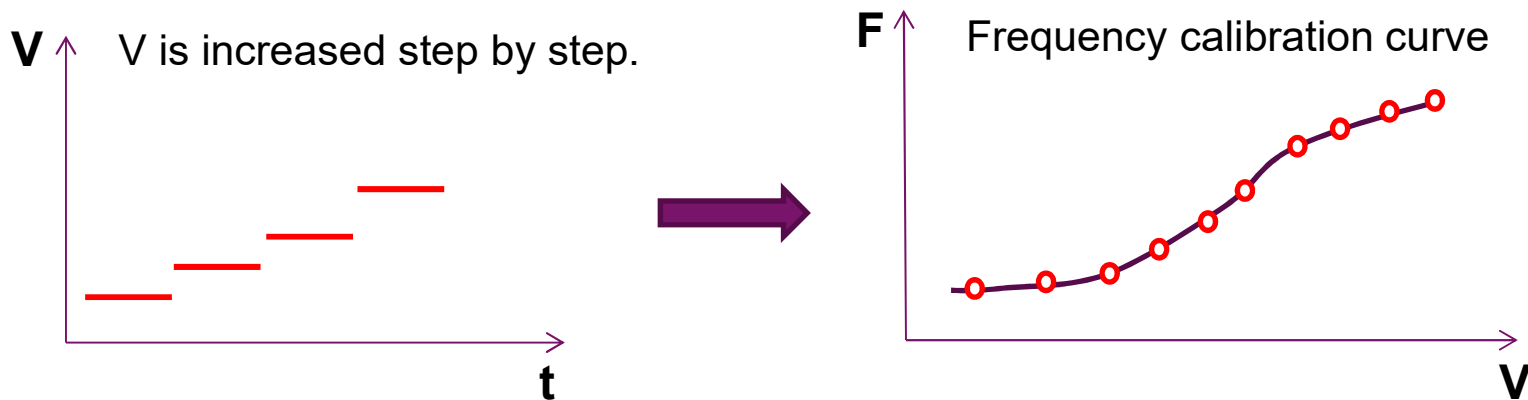
- Frequency sweeps : Fast AWG @ 1.25 Gs/s
- Sweep time  $1\mu\text{s}$  / dead time  $0.25\mu\text{s}$
- Detection bandwidth 600 MHz ( $\pm 300$  MHz)
- Acquisition @ 1 Gs/s

$n_e$  and its radial position requires a precise knowledge of the probing  $F$

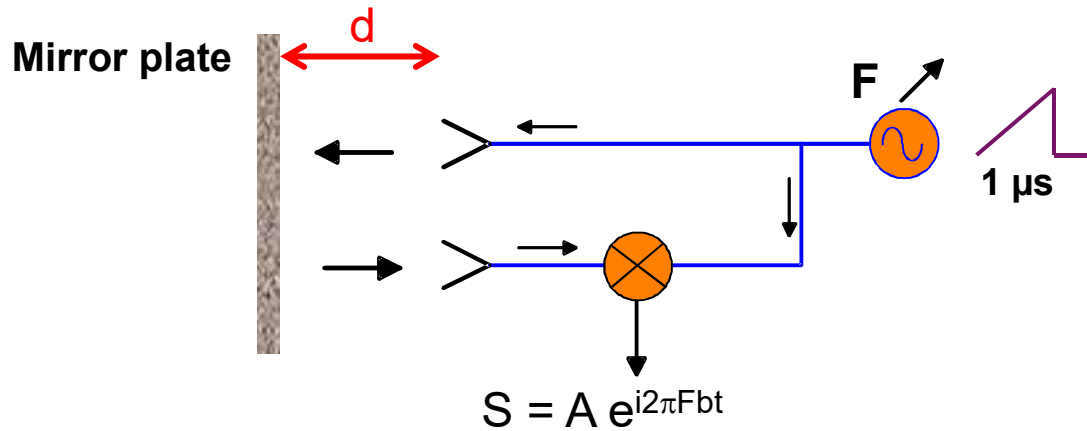
Frequency sweeping of the source is provided by a ramp voltage (AWG)



"Static" calibration procedure provides F(V)

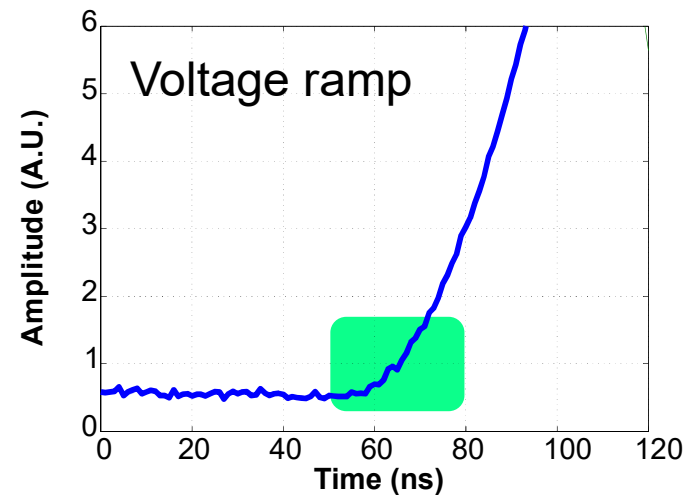
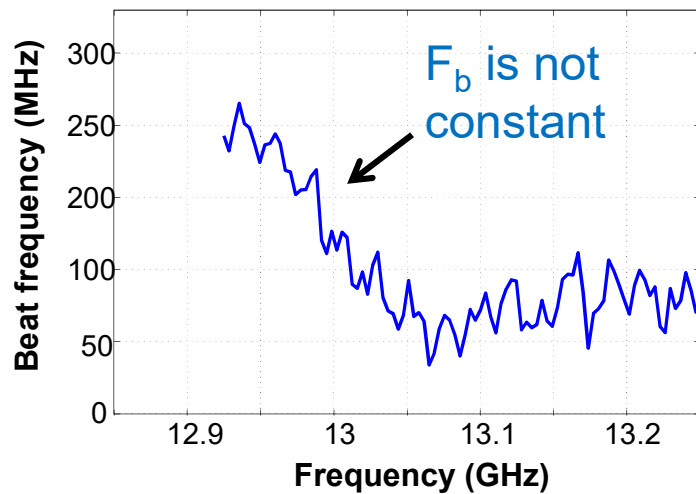


A recalculated voltage ramp is uploaded into the AWG to provide a linear frequency sweep



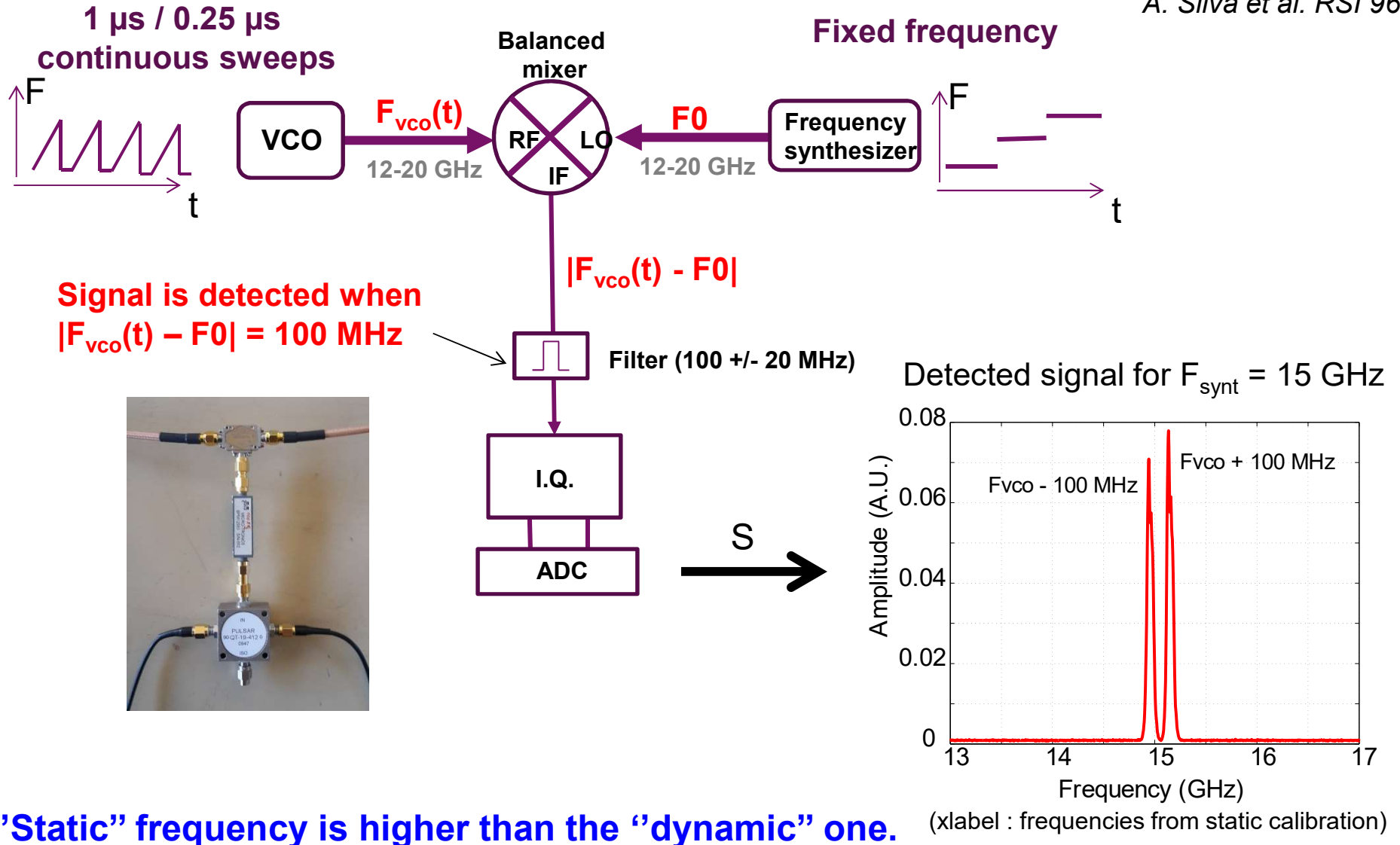
For linear frequency sweep :

$$F_b = \frac{d}{c} \frac{dF}{dt} = Cst$$



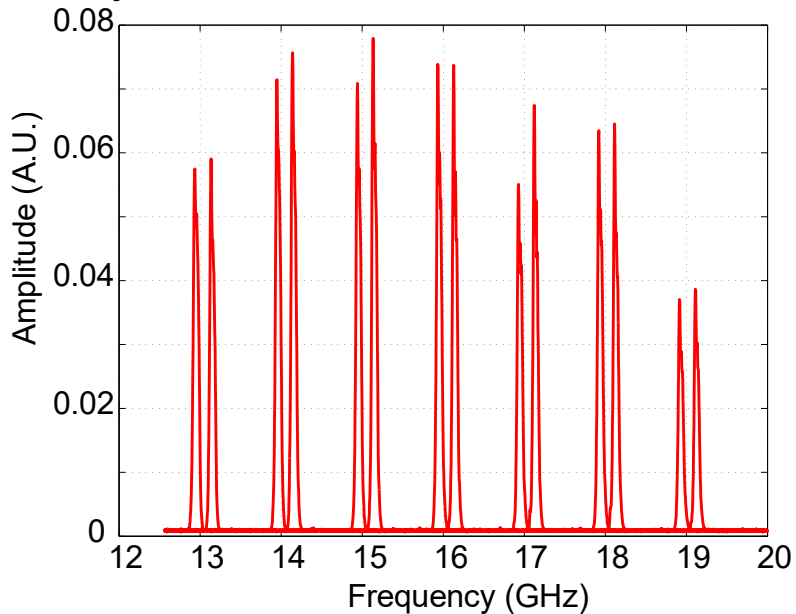
Non linearity occurs mainly at the onset of the sweep

→ Frequency correction is required

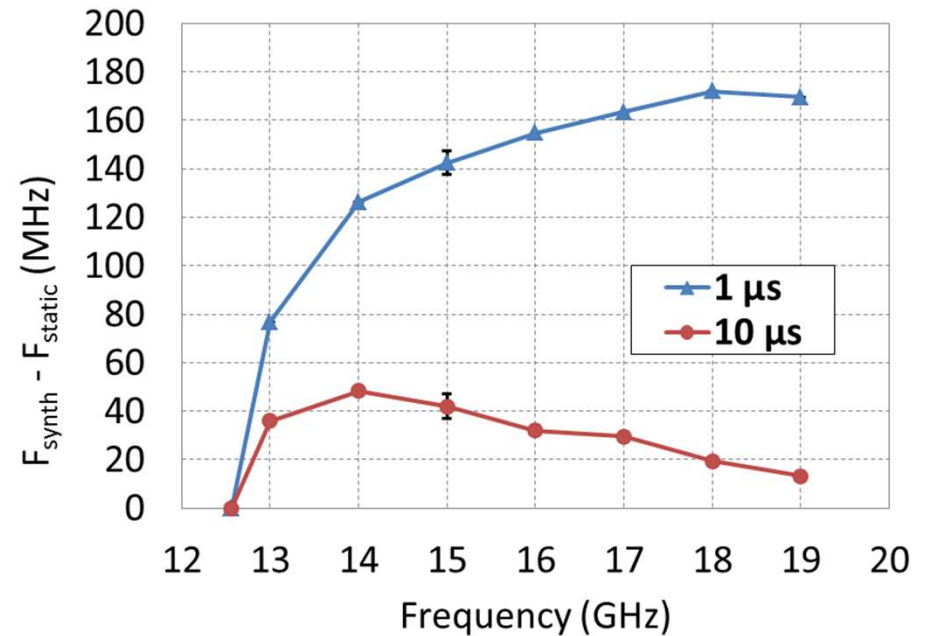


“Static” frequency is higher than the “dynamic” one.

Successive measurements using :  
 $F_{\text{synth}} = 13, 14, 15, 16, 17, 18, 19$  GHz



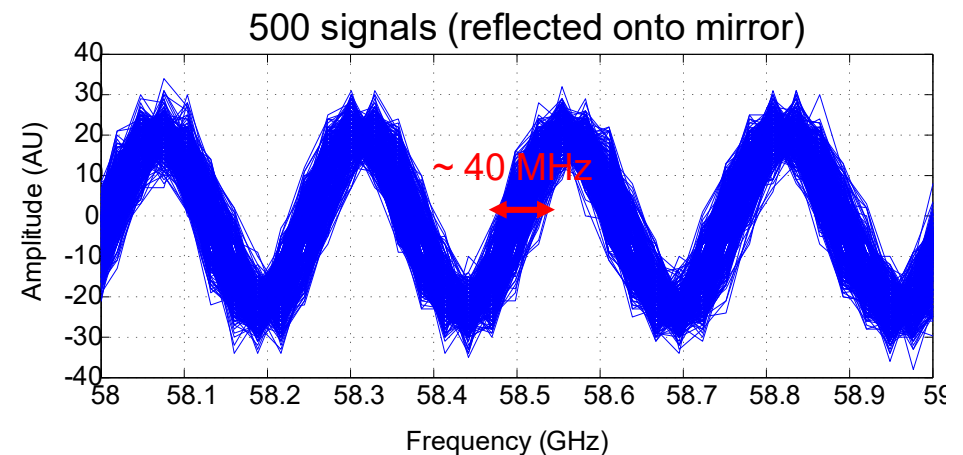
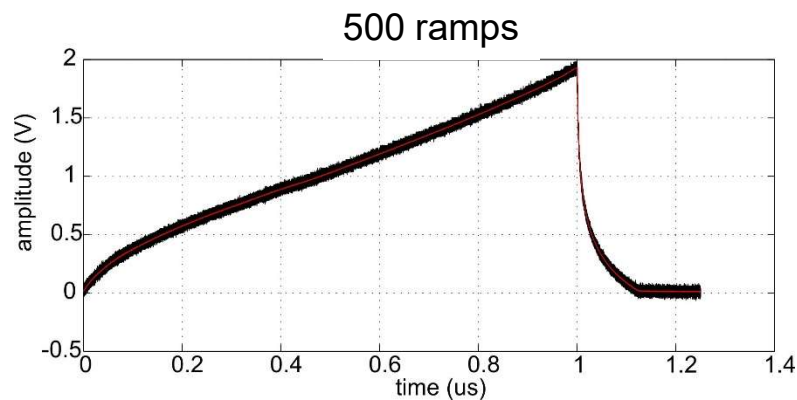
Frequency departure from static calibration



**Effective probing frequencies are lower than the static calibration ones**  
**Non-linear response of the electronic increases with the sweeping speed.**



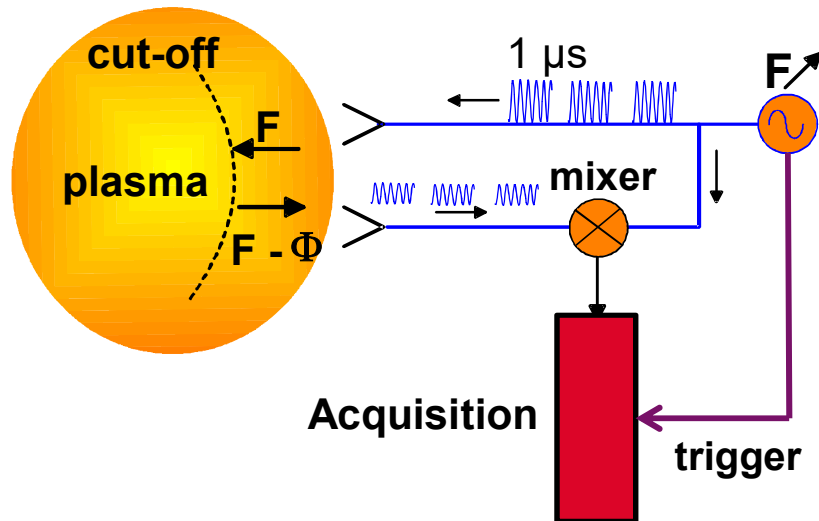
The frequency sweeps stabilized after a few hundreds of  $\mu\text{s}$ , thus the reflectometers must be continuously swept during a plasma discharge to provide the best reproducibility of the sweeps.



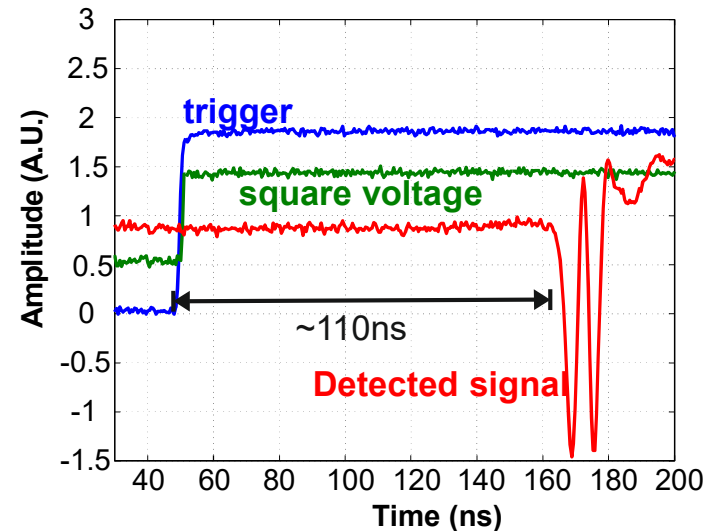
**A sweep of 1GHz  $\approx$  1cm of plasma (roughly and gradient dependent)**  
 **$\rightarrow$  Scattering of 40MHz would correspond to probing uncertainty less than 1mm.**

Delay between the **probing launched signal** and the **detected reflected signal**

Delay due to transmission line + plasma

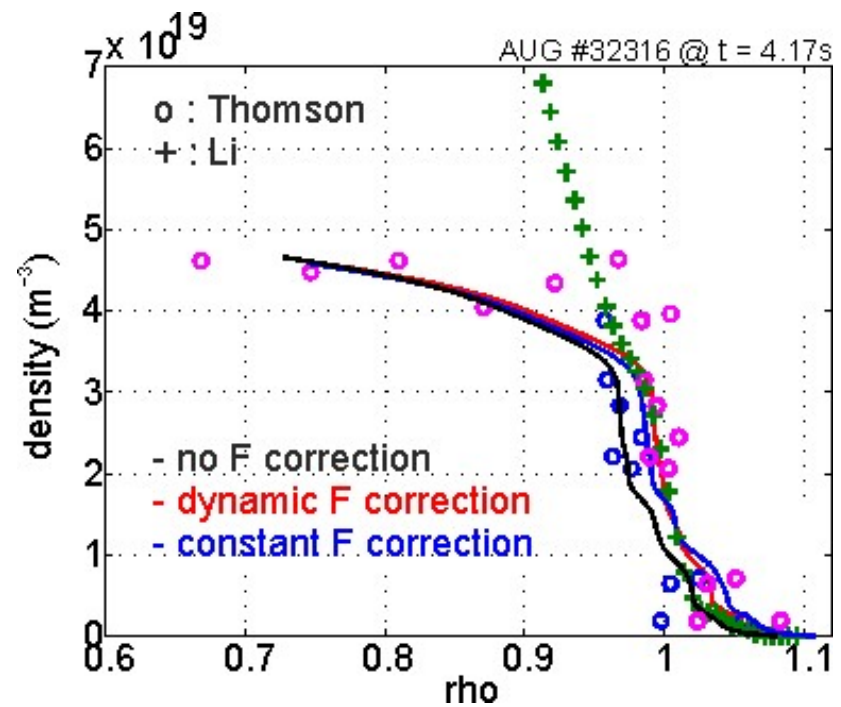
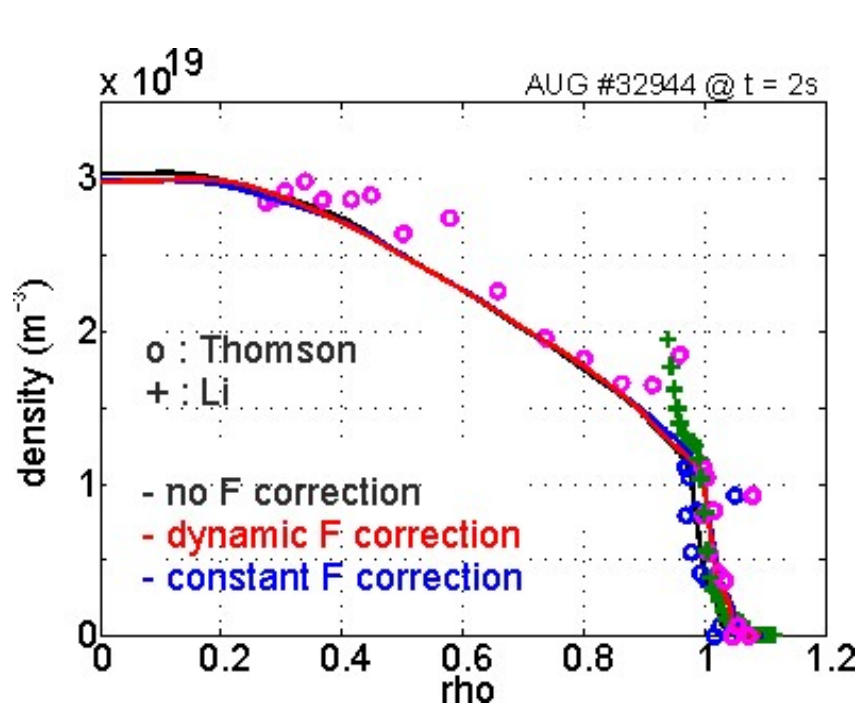


The trigger delay is adjusted using a square voltage instead of a ramp which makes a net impulse signal signature.



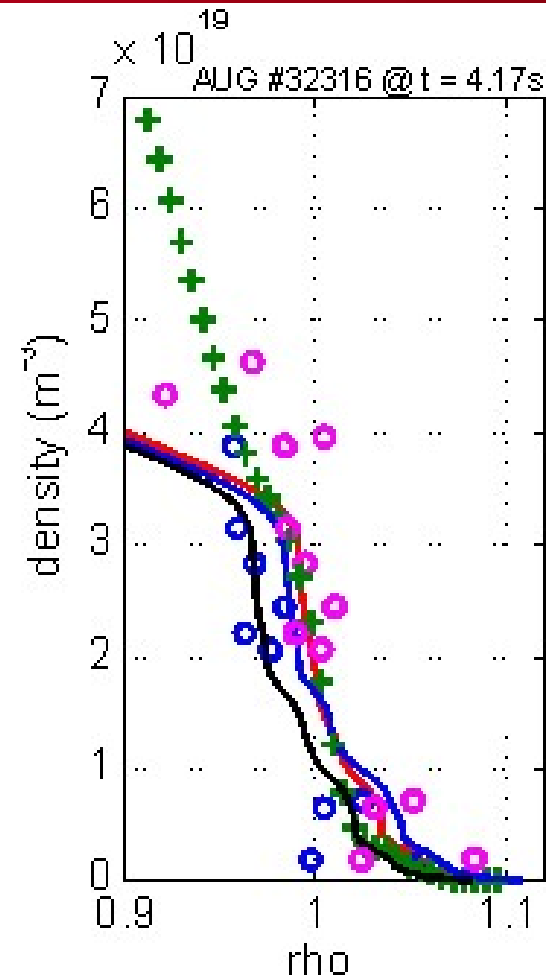
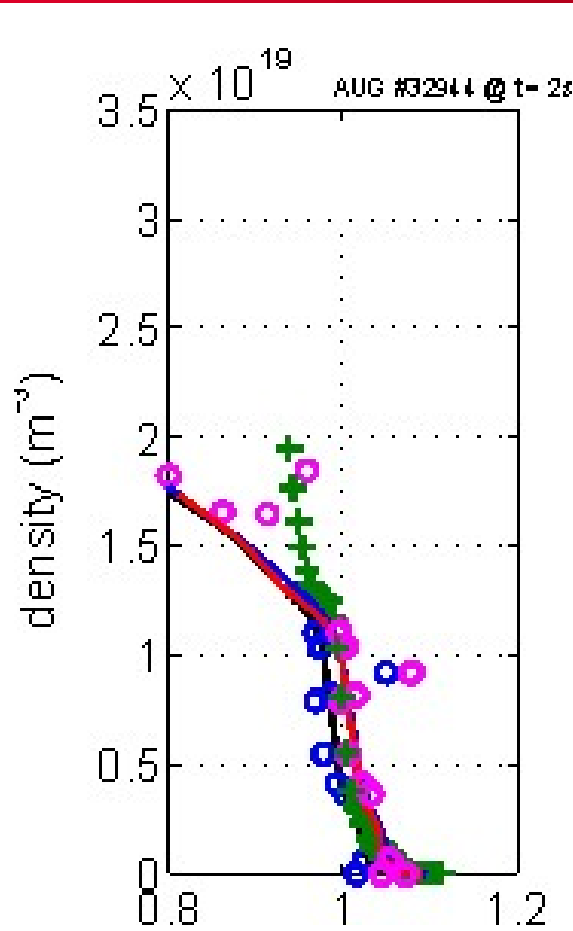
**Trigger delay** ~ 110 ns (uncertainty ~ 2 ns)  
(corresponds to 10% of the signal for 1 μs sweep time)

Frequency correction is applied as post treatment for profile calculation.



Radial shift  $\sim 1$  cm when compared to no correction.

(zoom)



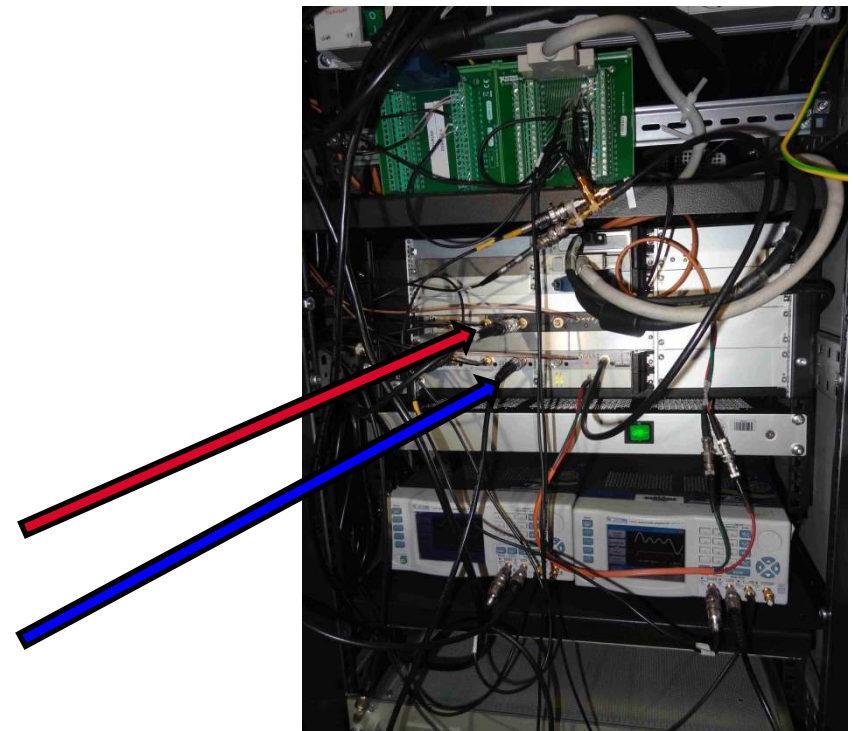
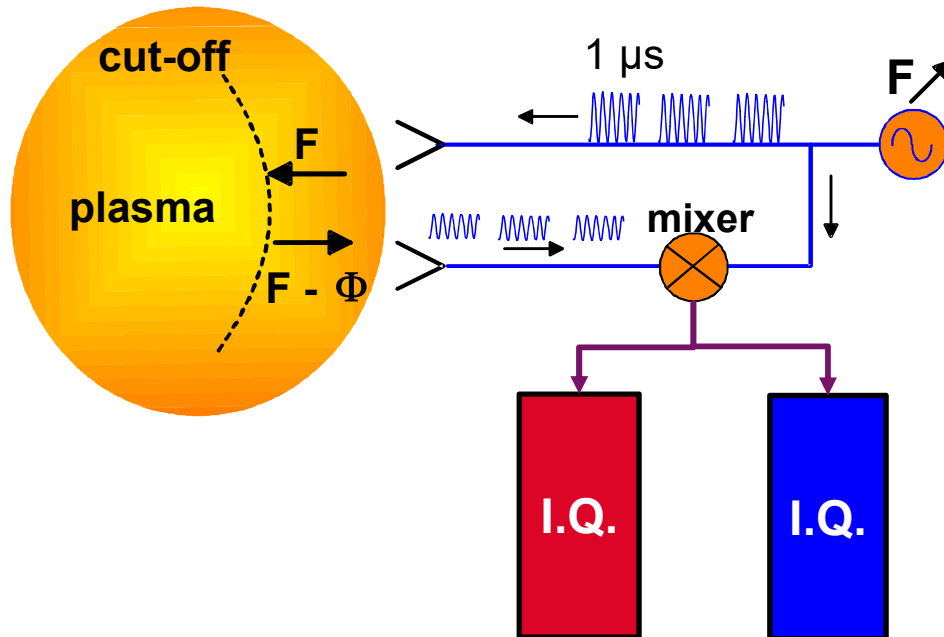
o : Thomson  
+ : Li

- no F correction
- with dynamic F correction
- with constant F correction

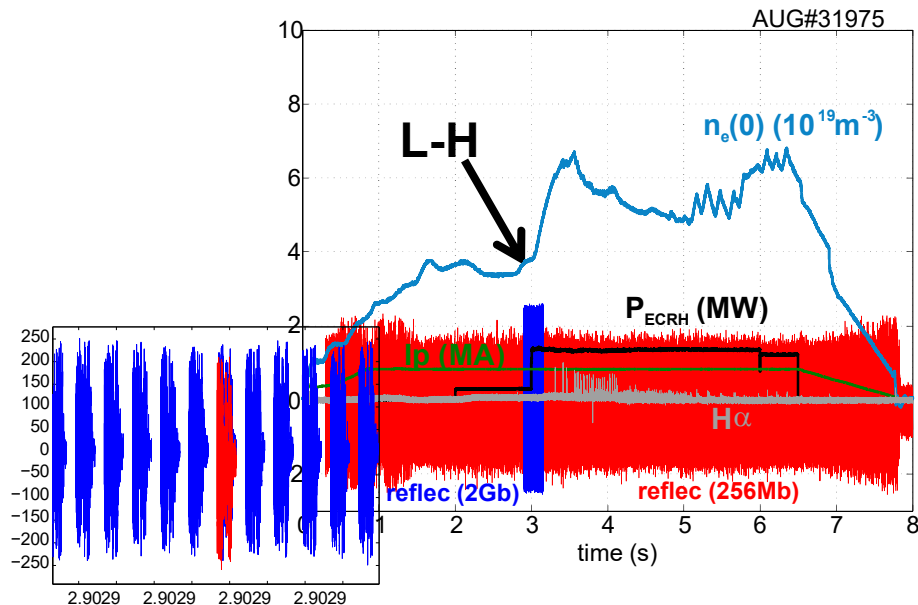
**2 acquisition modules (@1 Gs/s) :**

256 Mbyte  
(20 000 profiles)

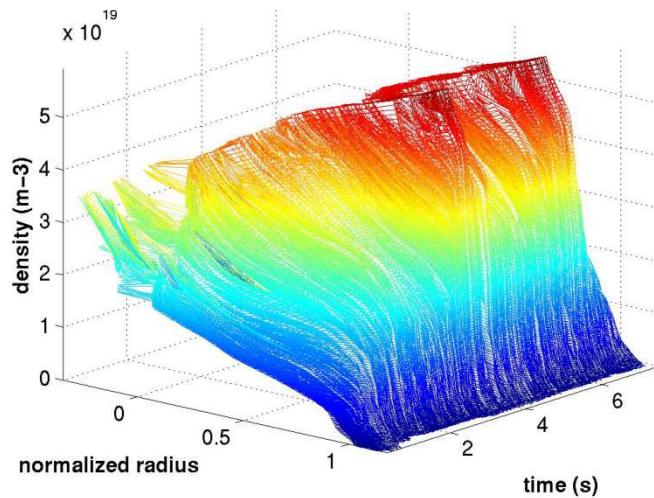
2 Gbyte  
(200 000 profiles)



**Possibility to trigger both acquisitions independently at dedicated times**



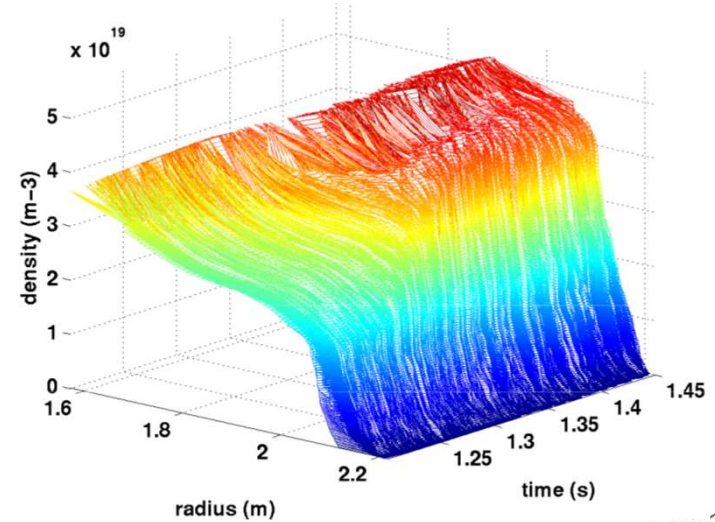
**1 $\mu$ s / 500 $\mu$ s (16 000 profiles)**



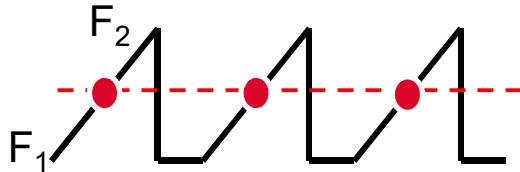
**Standard mode**  
(dead time = 0.5ms  $\rightarrow$  whole discharge)

**Burst mode**  
(dead time = 0.25  $\mu$ s  $\rightarrow$  fast events)

**1 $\mu$ s / 0.25 $\mu$ s (200 000 profiles – 250 ms)**



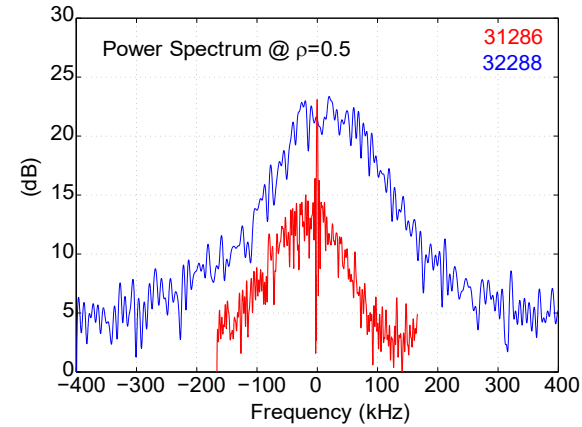
## Fixed frequency analysis



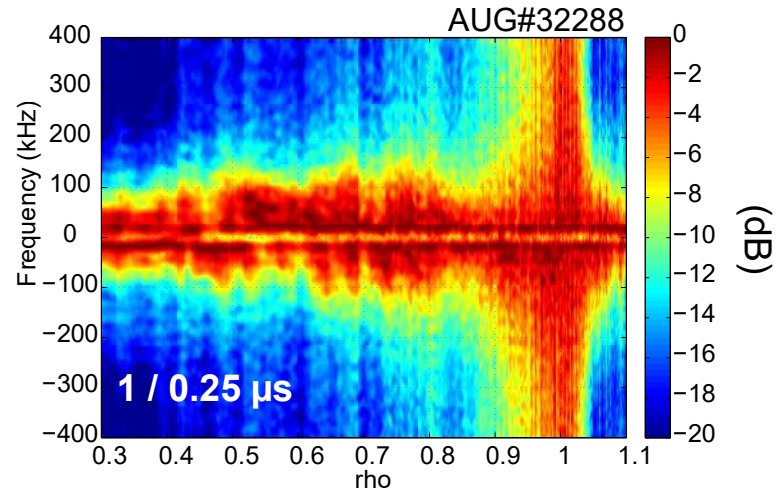
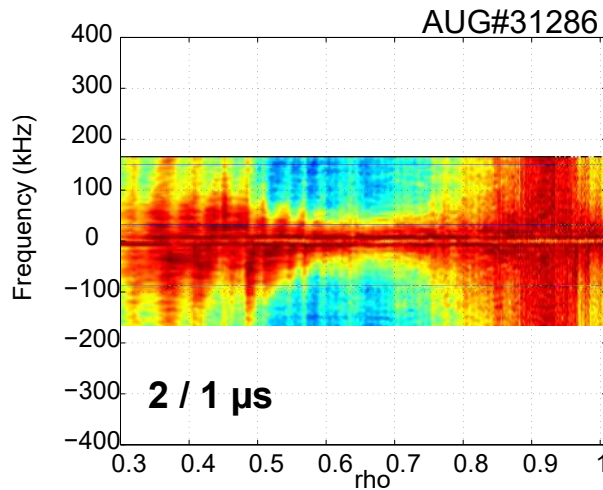
$$\text{FFT} (A(t) \cdot e^{i\Phi(t)})_F$$

$2\mu\text{s} / 1\mu\text{s} : f_s = 333 \text{ kHz}$

$1\mu\text{s} / 0.25\mu\text{s} : f_s = 800 \text{ kHz}$



Extension of the frequency coverage spectra reduces aliasing effects.



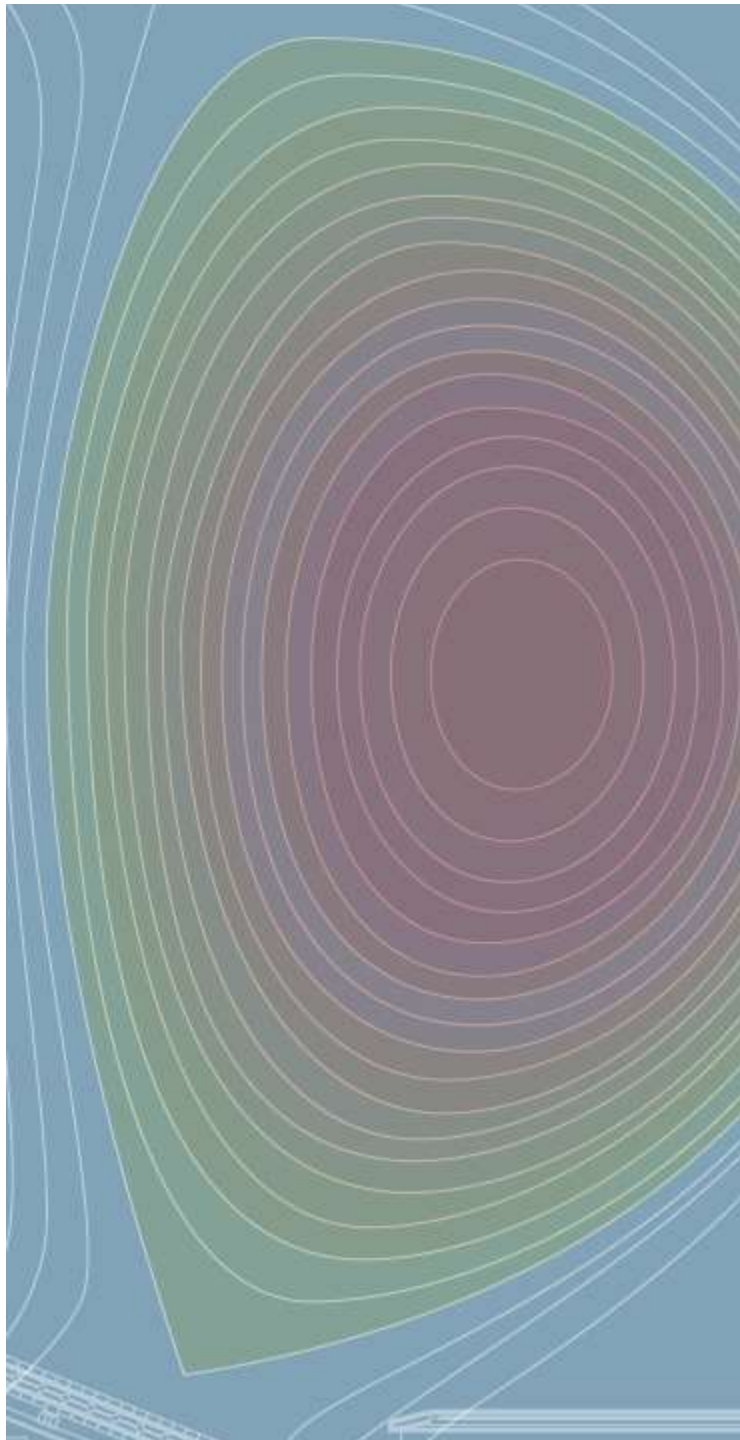
**Continuous frequency sweep provides high radial resolution**

- **Ultra-fast frequency sweeps 1 $\mu$ s achieved.**
- **Dynamic frequency corrections simply to performed.**
- **2 acquisition modules provide versatile physic *(if you're rich enough...)*.**
- **Continuous sweeps provide high radial resolution for turbulence.**
- **Fast repetition rate (800 kHz) compete with fixed frequency systems *(but doesn't achieve equivalent S/N)***



THANK YOU

Questions ?



Commissariat à l'énergie atomique et aux énergies alternatives  
Centre de Cadarache | 13108 Saint Paul Lez Durance Cedex  
T. +33 (0)4 42 25 46 59 | F. +33 (0)4 42 25 64 21

Etablissement public à caractère industriel et commercial | RCS Paris B 775 685 019

DRF  
IRFM  
WEST