



HAL
open science

Plastoquinone homoeostasis by Arabidopsis proton gradient regulation 6 is essential for photosynthetic efficiency

Thibaut Pralon, Venkatasalam Shanmugabalaji, Paolo Longoni, Gaétan Glauser, Brigitte Ksas, Joy Collombat, Saskia Desmeules, Michel Havaux, Giovanni Finazzi, Felix Kessler

► **To cite this version:**

Thibaut Pralon, Venkatasalam Shanmugabalaji, Paolo Longoni, Gaétan Glauser, Brigitte Ksas, et al.. Plastoquinone homoeostasis by Arabidopsis proton gradient regulation 6 is essential for photosynthetic efficiency. *Communications Biology*, 2019, 2, pp.220. 10.1038/s42003-019-0477-4 . cea-02178683

HAL Id: cea-02178683

<https://cea.hal.science/cea-02178683>

Submitted on 10 Jul 2019

HAL is a multi-disciplinary open access archive for the deposit and dissemination of scientific research documents, whether they are published or not. The documents may come from teaching and research institutions in France or abroad, or from public or private research centers.

L'archive ouverte pluridisciplinaire **HAL**, est destinée au dépôt et à la diffusion de documents scientifiques de niveau recherche, publiés ou non, émanant des établissements d'enseignement et de recherche français ou étrangers, des laboratoires publics ou privés.








Distributed under a Creative Commons Attribution 4.0 International License

ARTICLE

<https://doi.org/10.1038/s42003-019-0477-4>

OPEN

Plastoquinone homoeostasis by *Arabidopsis* proton gradient regulation 6 is essential for photosynthetic efficiency

Thibaut Pralon ¹, Venkatasalam Shanmugabalaji ¹, Paolo Longoni ¹, Gaetan Glauser^{1,2}, Brigitte Ksas³, Joy Collombat¹, Saskia Desmeules¹, Michel Havaux³, Giovanni Finazzi ⁴ & Felix Kessler ¹

Photosynthesis produces organic carbon via a light-driven electron flow from H₂O to CO₂ that passes through a pool of plastoquinone molecules. These molecules are either present in the photosynthetic thylakoid membranes, participating in photochemistry (photoactive pool), or stored (non-photoactive pool) in thylakoid-attached lipid droplets, the plastoglobules. The photoactive pool acts also as a signal of photosynthetic activity allowing the adaptation to changes in light condition. Here we show that, in *Arabidopsis thaliana*, proton gradient regulation 6 (PGR6), a predicted atypical kinase located at plastoglobules, is required for plastoquinone homoeostasis, i.e. to maintain the photoactive plastoquinone pool. In a *pgr6* mutant, the photoactive pool is depleted and becomes limiting under high light, affecting short-term acclimation and photosynthetic efficiency. In the long term, *pgr6* seedlings fail to adapt to high light and develop a conditional variegated leaf phenotype. Therefore, PGR6 activity, by regulating plastoquinone homoeostasis, is required to cope with high light.

¹ Faculty of Sciences, Laboratory of Plant Physiology, University of Neuchâtel, 2000 Neuchâtel, Switzerland. ² Faculty of Sciences, Chemical Analytical Service of the Swiss Plant Science Web, Neuchâtel Platform for Analytical Chemistry (NPAC), University of Neuchâtel, 2000 Neuchâtel, Switzerland. ³ Commissariat à l'Énergie Atomique et aux Énergies Alternatives (CEA), Cadarache, Centre National de la Recherche Scientifique (CNRS), UMR 7265, Institut de Biosciences et de Biotechnologies d'Aix-Marseille, Laboratoire d'Écophysiologie Moléculaire des Plantes Aix Marseille Université, 13108 Saint-Paul-lez-Durance, France. ⁴ Laboratoire de Physiologie Cellulaire et Végétale, UMR 5168, Centre National de la Recherche Scientifique (CNRS), Commissariat à l'Énergie Atomique et aux Énergies Alternatives (CEA), Institut National de la Recherche Agronomique (INRA), Institut de Biosciences et Biotechnologie de Grenoble (BIG), CEA-Grenoble Université Grenoble Alpes (UGA), 38000 Grenoble, France. Correspondence and requests for materials should be addressed to P.L. (email: paolo.longoni@unine.ch) or to F.K. (email: felix.kessler@unine.ch)

Oxygenic photosynthesis exploits light energy to generate an electron flow from H₂O to NADPH, which is used for the production of organic molecules from CO₂. This process requires the coordinated activity of several membrane embedded complexes: photosystem II (PSII), the cytochrome *b₆f* and photosystem I (PSI), which are functionally connected by diffusible electron carriers^{1,2}. A membrane-soluble prenyl quinone, plastoquinone (PQ), ensures the electron transport between PSII and cytochrome *b₆f*^{1–3}. High light intensities generate stress at the photosynthetic apparatus with PSII being particularly exposed to damage. By transferring electrons to cytochrome *b₆f* PQ releases the light excitation pressure on PSII and as a consequence, prevents light-induced damage on the photosynthetic apparatus. However, only part of the total PQ participates in electron flow. This portion (the photoactive PQ pool) can be quantified by measuring its reduction by PSII^{4,5} or its oxidation by PSI⁶ via the cytochrome *b₆f* complex upon light exposure. The remaining portion of the total PQ is not directly involved in photochemistry. This is defined as the non-photoactive PQ pool since it cannot be reduced by PSII or oxidised by PSI. This second pool of PQ is largely stored in lipid droplets associated with the thylakoid membranes: the plastoglobules⁷. The non-photoactive pool is involved in biosynthetic pathways occurring within the chloroplast (e.g. plastochochromanol-8 biosynthesis⁸) and at the same time acts as an indispensable reservoir of PQ to refill the photoactive pool. In fact, when a plant experiences light intensities exceeding its electron transport capacity (high light), the photoactive PQ pool is damaged^{9,10}. By replenishing it, the presence of a sufficient non-photoactive PQ pool reservoir ensures photosynthetic efficiency under prolonged stressful light conditions^{4,11,12}.

The proton gradient regulation (PGR) family comprises mutants displaying a perturbation of photosynthetic electron transport¹³, which in turn compromises the formation of a proton gradient across the thylakoid membranes. The proton gradient not only alimnts ATP synthesis but also induces non-photochemical quenching (NPQ) of chlorophyll fluorescence upon high light exposure. *PGR6* codes for a predicted atypical activity of bc1 complex kinase 1 that is localised inside the chloroplast and associated with plastoglobules^{14–16}. The *pgr6* mutant is defective in NPQ and maximal photosynthetic electron transport rate^{13,17}. Moreover, loss of *PGR6* leads to developmental defects such as impaired cotyledon greening and hypocotyl elongation under pure red light, which were reported to be independent from phytochrome-dependent light signalling pathways¹⁸. Upon several days of high light exposure, the *pgr6* mutant is characterised by growth and specific metabolic defects, such as low carotenoid accumulation and impaired sugar metabolism, which have been reported for adult plants^{17,19}.

In this study, we show that the *pgr6* primary defect consists in the misregulation of the homeostatic relationship between the photoactive PQ pool and the non-photoactive PQ pool. By relating photophysiological measurements to the analysis of photochemically active and non-active PQ pools in wild type, *pgr6* and a mutant of PQ biosynthesis, we conclude that *PGR6* is required to maintain the balance between the two pools already during a short (3 h) exposure to high light. This primary *pgr6* phenotype brings on the downstream defects in chloroplast physiology and plant development, which result in leaf variegation in high light exposed seedlings.

Results

Short-term photosynthetic defects in *pgr6*. Phenotypic observation of young seedlings grown under continuous high light (500 μmol m⁻² s⁻¹) revealed that the *pgr6* mutation resulted in a

chloroplast developmental issue that became visible as a conditional variegation of young leaves (Fig. 1a). Conversely, the same mutant plants did not show any visible phenotype when grown under continuous low light intensity (80 μmol m⁻² s⁻¹). This variegation is reminiscent of the phenotype previously reported in plants affected in protein turnover²⁰, reoxidation of PQ²¹ or chloroplast to nucleus signalling²². Thus, this observation suggests that *PGR6* is part of a mechanism essential for chloroplast development under high light.

To pinpoint the *pgr6* primary defect, while limiting the secondary effects that may arise from this initial perturbation^{17,19}, we grew wild type and mutant plants under moderate light conditions (120 μmol m⁻² s⁻¹, 8 h light/16 h dark) for 5 weeks and then exposed them to a relatively short high light treatment (3 h, 500 μmol m⁻² s⁻¹). This did not cause lasting damage to the photosynthetic apparatus, as shown by the maximum PSII efficiency ($\Phi_{\text{MAX}} = F_v/F_M$), which remained similar in both *pgr6* lines and wild-type plants (Fig. 1b). However, both the PSII quantum yield (Φ_{PSII}) and the NPQ were clearly lower in both *pgr6* mutant lines compared to wild type (Fig. 1c, d). The photosynthetic defects observed in *pgr6* after 3-h high light were not due to alterations in the composition and/or abundance of photosynthetic complexes that were present at comparable levels of representative subunits of PSII (D1 (PsbA) and PsbO), PSI (PsaD and PsaC), light harvesting complex (LHCII) (Lhcb2), cytochrome *b₆f* (*cytb₆f*) (PetC) and the ATPase (AtpC) (Supplementary Fig. 1).

Loss of *PGR6* affects state transition kinases activity. When shifted to high light plants acclimate via changes in the phosphorylation patterns of their photosynthetic protein complexes. High light leads to the inactivation of state transition kinase 7 (STN7) that phosphorylates the PSII antenna and a concomitant increase in the phosphorylation of the PSII core proteins by state transition kinase 8 (STN8)²³. Since *PGR6* is a predicted atypical kinase that may phosphorylate chloroplast proteins^{14–17}, we investigated whether the observed modifications in the Φ_{PSII} and NPQ parameters reflect a modification in the phosphorylation of the photosynthetic complexes. We analysed the phosphorylation patterns of major thylakoid proteins in wild type, *pgr6-1* and *pgr6-2* by anti-phosphothreonine immunoblotting and discovered that phosphorylation of both LHCII and PSII was clearly lower in both *pgr6* lines after 3-h high light compared to wild type (Fig. 2a), while there was no visible difference under moderate light. We found that the phosphorylation of the two major LHCII subunits (Lhcb1 and Lhcb2), as assessed by phosphorylation-dependent band shift using Phostag[™]-gels, was severely decreased in *pgr6* upon high light exposure. This result suggests that in *pgr6*, the activity of the STN7 kinase is more severely downregulated compared to wild type (Fig. 2b). Indeed, STN7 is the principal responsible for the phosphorylation of the trimeric LHCII, triggering the migration of mobile LHCII trimers between the two PSs in a process known as state transitions²⁴. STN7 activity depends on the reduction of photoactive PQ at *cytb₆f*^{25–27} and *PGR6* is associated with plastoglobules (thylakoid-attached lipid droplets) that are believed to function as PQ reservoir^{7,14–16}. We therefore reasoned that the observed changes in the phosphorylation patterns might reflect a perturbation in PQ redox state and/or availability in this mutant rather than a direct effect of *PGR6* kinase activity.

We thus investigated the impact of the *pgr6* mutation on state transitions. To follow the antenna movement in vivo, we measured the chlorophyll fluorescence at room temperature in plants while switching from red supplemented with far-red (FAR) light (which triggers LHCII dephosphorylation leading to state 1) to red light only (which enhances phosphorylation in state 2)²⁸.

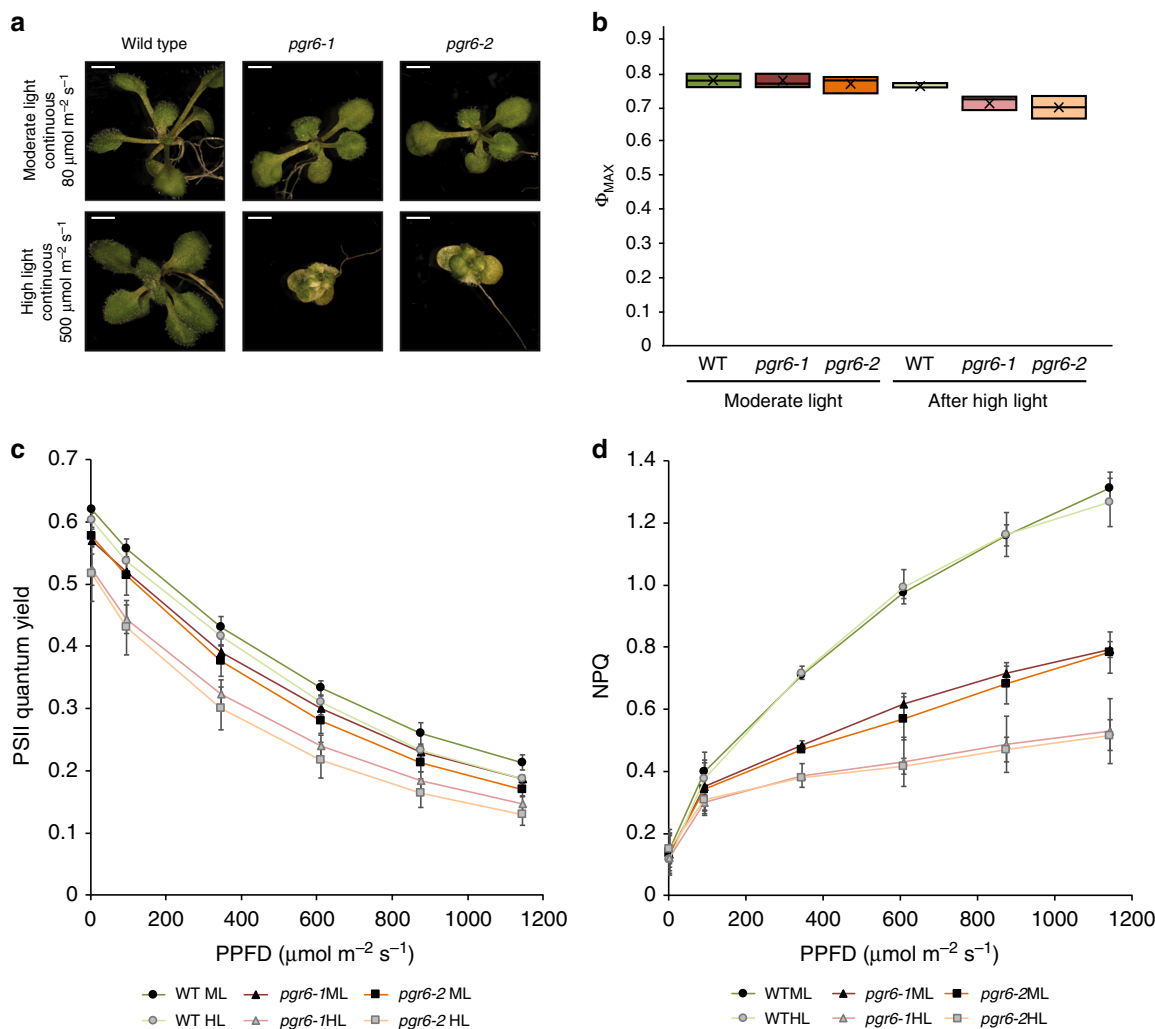
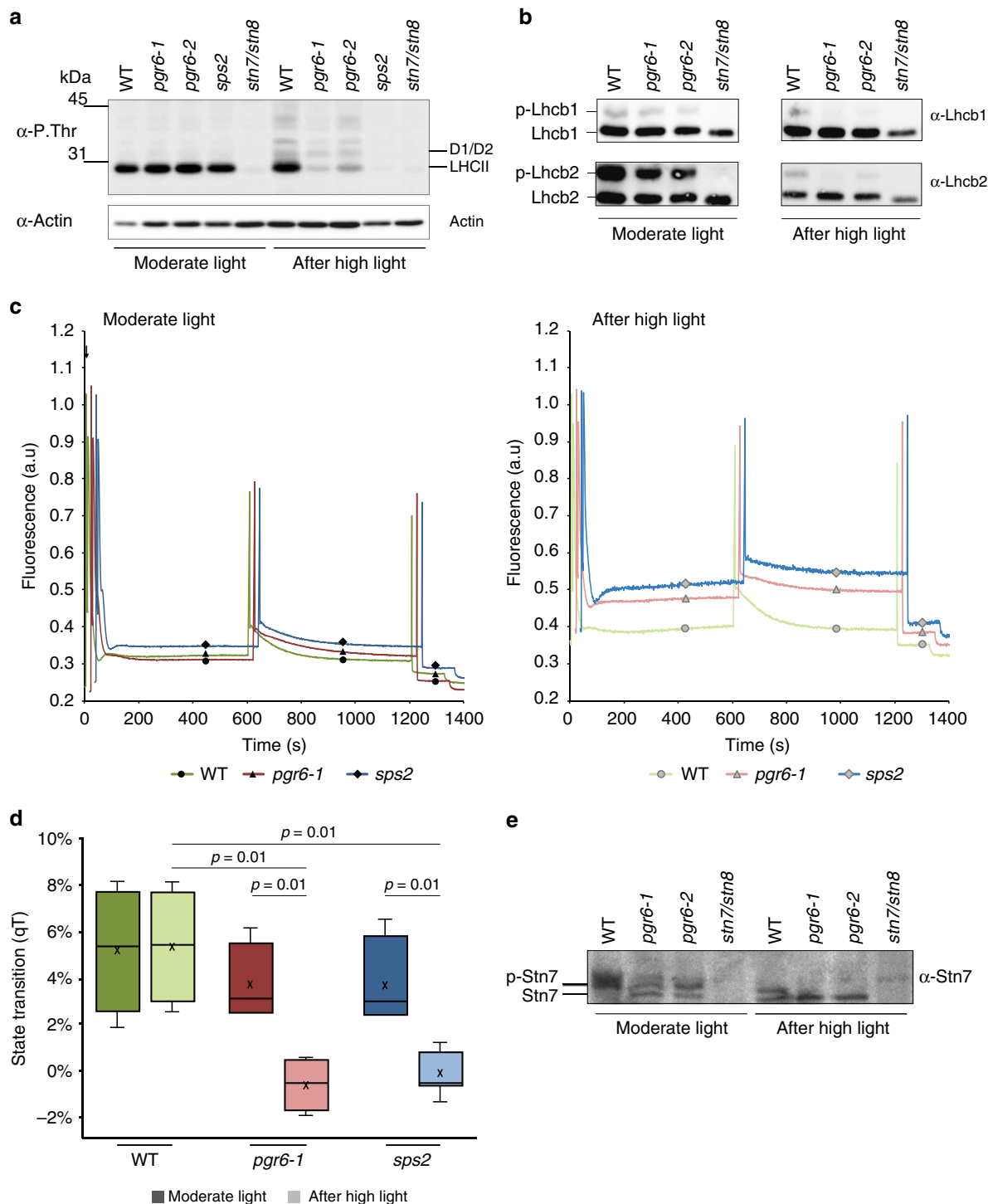


Fig. 1 The *pgr6* mutant has a conditional variegated phenotype and is affected in photosystem II efficiency. **a** Visible phenotype of 14 days seedlings of wild type, *pgr6-1* and *pgr6-2* mutants grown on $0.5 \times$ MS medium under $80 \mu\text{mol m}^{-2} \text{s}^{-1}$ and $500 \mu\text{mol m}^{-2} \text{s}^{-1}$ in 24 h continuous light; scale bar = 2 mm. Twenty-four-day-old plants grown on soil in short day cycle (8 h light /16 h dark) were used to assess the photosynthetic efficiency of wild type (WT), *pgr6-1* and *pgr6-2* under moderate light ($120 \mu\text{mol m}^{-2} \text{s}^{-1}$) (ML, dark colours) and after 3 h of high light ($500 \mu\text{mol m}^{-2} \text{s}^{-1}$) (HL, light colours). After 10 min of dark relaxation, variable room temperature chlorophyll fluorescence was measured on whole plants exposed to these light conditions to determine the following parameters: **b** PSII maximum quantum yield ($\Phi_{\text{MAX}} = F_{\text{V}}/F_{\text{M}}$). **c** PSII quantum yield ($\Phi_{\text{PSII}} = (F_{\text{M}}' - F_{\text{S}})/F_{\text{M}}$) at increasing light intensities, whiskers and box plot shows the minimum, first quartile, median, average, third quartile and maximum of each dataset. **d** Non-photochemical quenching ($\text{NPQ} = (F_{\text{M}} - F_{\text{M}}')/F_{\text{M}}$) after 1 min of exposure at different light intensities. These measures were performed with a Fluorcam (MF800 - PSI) with blue light LEDs (470 nm). Each value represents the average of a pot containing 2-3 plants. Error bars indicate \pm SD ($n = 3$ biologically independent samples). Data points for the items **b-d** are available in Supplementary data 1

Decrease in the fluorescence level upon light switch is a proxy for the antenna movement and is absent in the state transition mutant *stn7*²⁴. Consistent with the phosphorylation data, we found that both *pgr6* and wild type have the same capacity to undergo the state 1 to state 2 transition, when grown under and exposed only to moderate light (Fig. 2c). However, the transition from state 1 to state 2 was inhibited in *pgr6* but not in wild type after 3-h high light (Fig. 2c, d), supporting the idea that the loss of PGR6 causes a conditional state transition defect, which may be observed only after high light exposure.

It has been reported that the activation of STN7 kinase involves its own phosphorylation^{26,27}. Therefore, we analysed the phosphorylation pattern of the STN7 protein using Phostag™ gels, and found that it was less phosphorylated in *pgr6* after high light treatment (Fig. 2e), once again in agreement with a perturbation of state transitions (i.e. STN7 activity). Interestingly, the phosphorylation of the PSII reaction centre proteins (i.e. D1

(PsbA) and D2 (PsbD)), which mostly depends on STN8^{24,29}, was also affected in *pgr6*. Three-hour high light exposure resulted in a lower phosphorylation level of D1 (PsbA) and D2 (PsbD) in *pgr6* compared to wild type (Fig. 2a and Supplementary Fig. 2). Although the regulation of STN8 has not been fully clarified yet, this observation suggests that the activities of the two state transition kinases are linked and possibly both dependent on the status of the photosynthetic electron transport chain (ETC) or that they have overlapping target proteins³⁰. A decrease in PSII phosphorylation may affect the repair cycle of the core protein D1 (PsbA) thereby decreasing the maximum efficiency of PSII³¹. This did not appear to be the underlying cause of the long-term *pgr6* phenotype, as short high light exposure did not cause a measurable decrease in the maximum yield of PSII (Fig. 1b) or increase of the basal level of fluorescence in the dark (F_0). Both parameters are dependent on PSII activity and are affected if there is a defect in its repair cycle³² (Supplementary Fig. 2).



Loss of PGR6 affects the photoactive PQ pool. To address whether the defects in protein phosphorylation and state transitions are linked to a decrease in PQ availability, we compared the photosynthetic behaviour of *pgr6* to that of *sps2* (solanesyl phosphate synthase 2 mutant). In *sps2*, a mutant partially defective in PQ biosynthesis, the total PQ and, as a consequence, the photoactive PQ pools are decreased⁴. In particular, the shortage of photoactive PQ should diminish the electron capacity of the ETC affecting the photosynthetic efficiency. This would result in lower electron transport rate, and therefore a reduced quantum yield of the PSII (Φ_{PSII}) and NPQ induction⁴ (Supplementary Fig. 3). Since *sps2* by its nature is PQ-limited, it can be

used as a term of comparison to pinpoint a *pgr6* defect due to PQ availability. The first observation was that in *sps2*, as in *pgr6*, the thylakoid proteins are strongly dephosphorylated after 3-h high light (Fig. 2a). This result supports the hypothesis linking the downregulation of the STN7 and STN8 activity and perturbation of PQ availability. To directly assess the capacity of the ETC, we measured chlorophyll *a* fluorescence induction kinetics and calculated the electron transport capacity from the normalised area above the fluorescence traces³³ (Fig. 3a). The rationale for this choice is that the area above the fluorescence kinetics is a proxy of the average number of turnovers of each PSII reaction centre, i.e. of the number of electrons that this photosystem is able to inject

Fig. 2 Thylakoid protein phosphorylation and state transitions are disturbed after high light treatment in *pgr6* background. **a** Total protein extracts of 4-week-old wild type (WT), *pgr6-1*, *pgr6-2*, *sps2* and *stn7/stn8* analysed by immunoblotting with anti-phosphothreonine antibody; the principal thylakoid phospho proteins are indicated on the right according to their size. Core photosystem II proteins D1 (PsbA) and D2 (PsbD) are indicated as a single band due to their poor resolution. Actin was used as a loading control. **b** Lhcb1 and Lhcb2 phosphorylation levels were visualised after separation on Phostag™-pendant acrylamide gels. The upper band corresponds to the phosphorylated form (p-), *stn7/stn8* double mutant is a non-phosphorylated control. **c** Average transient of the variable room temperature chlorophyll fluorescence measured during the transition from red (660nm) supplemented with far-red light (720nm) state 1 to pure red light state 2 ($n = 4$ independent pots containing 2–3 plants). The fluorescence curves from *pgr6* and *sps2* are shifted on the x-axis to allow visualising the F_MST1 and F_MST2 values. The x-axis time scale refers to the wild-type curve. **d** Calculated quenching related to state transition ($qT = (F_MST1 - F_MST2)/F_M$), expressed as the percentage of F_M that is dissipated by the state 1 to state 2 transition, of wild type (WT), *pgr6-1* and *sps2* under moderate light ($120\mu\text{mol m}^{-2}\text{s}^{-1}$) (ML) and after 3 h of high light ($500\mu\text{mol m}^{-2}\text{s}^{-1}$) (HL). Whiskers and box plot shows the minimum, first quartile, median, average, third quartile and maximum of each dataset ($n = 4$ biologically independent samples); p -values are calculated via a two-tailed Student's t test. **e** STN7 phosphorylation level visualised after separation on Phostag™-pendant acrylamide gels. The upper band corresponds to the phosphorylated form (p-), a protein sample from *stn7/stn8* double mutant was loaded as a control for the antibody specificity. Uncropped images of the membranes displayed in **a**, **b** and **e** are available as Supplementary Fig. 11. Data points for items **c**, **d** are available as Supplementary data 2

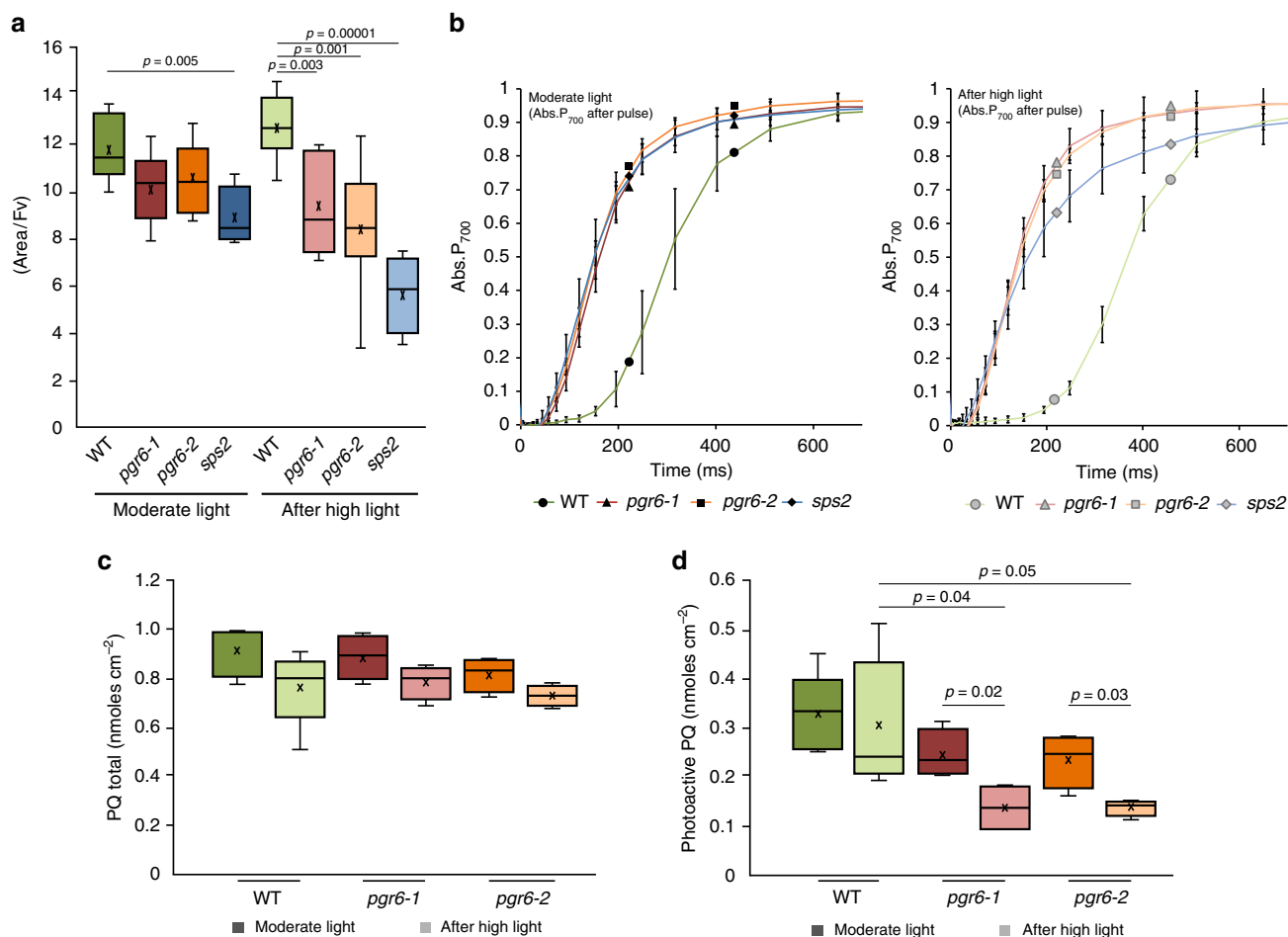


Fig. 3 The *pgr6* mutant shows a limitation in photosynthetic electron carriers. Wild type (WT), *pgr6-1*, *pgr6-2* and *sps2* plants were grown under moderate light intensity and sampled under growth light conditions (moderate light) or after the exposure to 3 h at $500\mu\text{mol m}^{-2}\text{s}^{-1}$ (after high light). **a** Normalised area above the rapid fluorescence induction curve measured after 15 min of incubation in dark. This value estimates the number of available electron carriers per reaction centre (area/Fv). Error bars indicate \pm SD ($n = 8$ for wild type, *pgr6-2*, $n = 6$ for *pgr6-1*, $n = 4$ for *sps2* biologically independent samples). **b** Analysis of P₇₀₀ re-oxidation kinetics induced by far-red light after a saturating light pulse (Time 0 = far-red ON). The oxidation status was measured by the increase in absorption at 810 nm on fully expanded leaves of each genotype. Error bars indicate \pm SD ($n = 9$ biologically independent samples). **c** Leaf discs from wild type (WT), *pgr6-1* and *pgr6-2* plants were collected under moderate light ($120\mu\text{mol m}^{-2}\text{s}^{-1}$) and after 3 h of high light ($500\mu\text{mol m}^{-2}\text{s}^{-1}$), the average total plastoquinone (oxidised + reduced PQ) content was measured in nmoles cm⁻². **d** The oxidised and reduced PQ amount was measured in leaf discs exposed either to 2min far-red light ($5.5\mu\text{mol m}^{-2}\text{s}^{-1}$) to fully oxidise the photoactive PQ pool or to 15 s saturating flash ($2000\mu\text{mol m}^{-2}\text{s}^{-1}$) to fully reduce the photoactive PQ. The total photoactive PQ pool was calculated from the difference between these two conditions. Average values are reported as PQ nmoles cm⁻². Whiskers and box plot shows the minimum, first quartile, median, average, third quartile and maximum of each dataset ($n = 4$ biologically independent samples); p -values are calculated via a two-tailed Student's t test. Data points for item **a** are available as Supplementary data 3; data points for item **b** are available as Supplementary data 4; data points for items **c**, **d** are available as Supplementary data 6

Table 1 The electron transport capacity per photosystem I is limited in *pgr6*

Moderate light				
	Wild type	<i>pgr6-1</i>	<i>pgr6-2</i>	<i>sps2</i>
Lag time after far red (ms)	8.78 ± 0.79	9.89 ± 1.06	8.57 ± 1.15	7.32 ± 1.06
Lag time after pulse (ms)	165.88 ± 2.93 ^a	74.34 ± 5.93^b	69.38 ± 5.81^b	64.54 ± 5.92^b
Calculated pulse e ⁻ number	19.35 ± 1.95 ^f	7.53 ± 0.41^g	8.16 ± 0.68^g	9.19 ± 2.23^g
After high light				
	Wild type	<i>pgr6-1</i>	<i>pgr6-2</i>	<i>sps2</i>
Lag time after far red (ms)	17.14 ± 4.37	15.68 ± 2.94	15.01 ± 2.69	17.67 ± 0.98
Lag time after pulse (ms)	213.03 ± 12.68 ^c	54.04 ± 13.72^d	47.36 ± 14.05^{d,e}	14.75 ± 3.27^e
Calculated pulse e ⁻ number	13.21 ± 2.33 ^h	3.69 ± 1.51ⁱ	3.30 ± 1.31ⁱ	0.83 ± 0.16ⁱ

Electron (e⁻) capacity of the electron transport chain per photosystem I calculated from the P₇₀₀ oxidation lag time after a saturation pulse normalised over the lag time of the oxidation after dark. Values statistically different from the wild type for each condition are in bold. Superscript letters are used to indicate statistically different groups by Student's *t* test (*p* < 0.05) (*n* = 4 for wild type, *pgr6-1* and *n* = 3 for *pgr6-2*, *sps2* biologically independent samples). Data points are available in Supplementary data 4

into the ETC. It thus provides quantitative data on all the ETC electron acceptors, including the PSII internal electron acceptors (Q_A and Pheophytin), the plastocyanin downstream of the cytochrome *b₆f* complex and the PQ connected to PSII (the photochemically active pool). Using this approach, we found that the ETC electron capacity is not different between *pgr6* and wild type when plants were grown under moderate light. This suggests that the photoactive PQ pool has the same electron capacity in *pgr6* and wild type at least under moderate light. On the other hand, we detected a smaller electron capacity in *sps2* mutant, consistent with a constitutive lack of PQ in this line. Upon 3 h of high light exposure, both *pgr6* and *sps2* mutants showed a diminished electron transport capacity (Fig. 3a). This finding suggests that increasing light intensity diminishes the photoactive PQ pool in *pgr6*, thus the phenotype was similar to *sps2* from a functional point of view. To substantiate the hypothesis that the changes in the ETC observed after 3 h of high light are linked to the lack of photoactive PQ, we quantified changes in the electron fluxes in the different genotypes using a previously established kinetic model based on fluorescence induction kinetics (the JIP test)^{33,34}. We found that the maximum quantum yield of primary photochemistry in PSII (Φ_{Po}) did not vary between wild type and *pgr6* under moderate light (Supplementary Fig. 4), consistent with the previous measurements (Fig. 1b). However, the quantum yield of the electron transport flux after Q_A (Φ_{ET2o}) and the yield of electron transport to PSI electron acceptors (Φ_{RE1o}) were already lower in *pgr6* mutants compared to wild type. After 3 h of high light exposure, the maximum yield was again not affected by the *pgr6* mutation, however both parameters related to the transport from PSII to PSI (Φ_{ET2o} and Φ_{RE1o}) were even further decreased in the two *pgr6* mutant lines (Φ_{ET2o}: 0.28 ± 0.04; 0.28 ± 0.07) (Φ_{RE1o}: 0.08 ± 0.02; 0.07 ± 0.03) compared to wild type (Φ_{ET2o}: 0.38 ± 0.03; Φ_{RE1o}: 0.13 ± 0.02). Similarly, the PQ-limited *sps2* plants showed lower electron transport efficiency (lower Φ_{ET2o} and Φ_{RE1o}) under both light conditions (Supplementary Fig. 4). This analysis points to a constitutive lower capacity of the mutants to perform electron transport from PSII to PSI, which is consistent with a perturbation of the photoactive PQ pool in *pgr6*. However, this defect becomes symptomatic only upon exposure to high light. A direct measurement in *pgr6* of the fraction of the PSII reaction centres incapable of transferring electrons to the ETC (closed) by variable room temperature fluorescence upon exposure to increasing light intensities³⁵ also supports this hypothesis. In fact, the steady-state fluorescence was higher in the mutant confirming that the PSII reaction centres were systematically more closed in *pgr6* than in the wild type (Supplementary Fig. 5). Closure of PSII reaction centres is

the expected consequence of a limitation of the electron transfer to the photoactive PQ pool³⁵. It is worth noting that said effect is already measurable in plants not exposed to high light, suggesting that the electron transport efficiency is constitutively defective in *pgr6*.

A limitation in the size of the photoactive PQ pool should also have a downstream effect on PSI, by decreasing the number of electrons available to reduce its primary electron donor (P₇₀₀) upon light-driven oxidation. This hypothesis can be tested by comparing the lag time of P₇₀₀⁺ oxidation in conditions under which the ETC is completely oxidised (devoid of transportable electrons so that only the one electron present inside the PSI will account for the delay) or fully reduced by a saturating flash. The ratio between these two values provides the number of electrons contained in the whole ETC per PSI⁶. We measured these parameters using time resolved redox spectroscopy to quantify the *pgr6*-induced defect⁶. Wild-type plants, acclimated to moderate light, had a maximum of 19 ± 2 electrons per PSI, which is a number consistent with previous reports estimating the number of electron carriers³⁶, whereas in both *pgr6* lines background there were only 8 ± 1 electrons per PSI. After 3 h of high light exposure, the ETC of the wild-type plant contained 13 ± 2 electrons per PSI, while only 4 ± 1 and 3 ± 1 were present in *pgr6-1* and *pgr6-2*, respectively (Fig. 3b and Table 1). These results demonstrate that the ETC capacity is limited in *pgr6* and that this defect is accentuated by the high light treatment. Interestingly, the same effect was observed in the *sps2* background (Table 1).

In summary, the spectroscopic data for both *pgr6* and *sps2* are consistent with a scenario in which the limitation of photoactive PQ results in diminished electron transport. Importantly, also, the cytochrome *b₆f* turnover rate³⁷ was affected in neither *pgr6* nor in *sps2*, featuring wild-type kinetics after exposure to 3 h of high light (Supplementary Fig. 6). This indicates that the very high affinity of this complex for PQ in vivo ensures maximum turnover even under conditions when the PQ pool is lowered³⁸.

To biochemically determine the size of the photoactive PQ pool, the amounts of reduced and oxidised PQ were measured by HPLC in leaves in which the photoactive PQ was either fully oxidised by 2 min of FAR light or fully reduced by saturating white light^{4,5,11,12}. Total PQ in *pgr6* was indistinguishable from the wild type (Fig. 3c), and the photoactive PQ was 0.33 ± 0.08 nmoles cm⁻² in wild type and 0.24 ± 0.05 and 0.23 ± 0.06 nmoles cm⁻² in *pgr6-1* and *pgr6-2*, respectively, under moderate light (Fig. 3d). However, after 3-h high light, the photoactive PQ in *pgr6* mutants decreased significantly (Student *t* test, *p* = 0.05) to 0.14 ± 0.05 nmoles cm⁻² and 0.14 ±

0.02 nmoles cm^{-2} , while the wild-type photoactive PQ pool remained stable around 0.30 ± 0.13 nmoles cm^{-2} (Fig. 3d). Furthermore, no major difference was observed in the levels of the hydroxyl-PQ, a molecule that accumulates when PQ is depleted by oxidative stress, between wild type, *pgr6* and *sps2*¹² (Supplementary Fig. 7). These results demonstrate that high light treatment depletes photoactive PQ in *pgr6*. Since total PQ was not measurably different under either moderate or high light conditions, no accumulation of the oxidation product hydroxyl-PQ had occurred and the photoactive pool was smaller, we expected the non-photoactive PQ pool in the plastoglobules to be increased. Consistently, higher levels of PQ were present in the plastoglobules isolated from *pgr6* and this difference was accentuated after 3-h high light (Supplementary Fig. 8).

Discussion

Knockout mutants of *PGR6* are characterised by conditional defects in growth and development, including the pale cotyledon phenotype previously reported under constant red light¹⁸ and the variegated phenotype under high light reported here (Fig. 1a). So far, no molecular explanation for the observed defects was provided besides proposing that either the lower photosynthetic efficiency¹⁷ or the misregulation of the prenyl-lipid metabolism¹⁹ in *pgr6* are the cause of the biochemical phenotype upon prolonged high light. In this work, we analysed plants grown under moderate non-phenotype-inducing light and assessed their photosynthetic traits after a limited exposure to high light. We observed that 3 h of high light were sufficient to trigger a clear photosynthetic defect in *pgr6*, suggesting that the underlying cause was either already present before the treatment or could be attributed to the lack of fast adaptive responses. Photosynthetic complexes were affected neither in amount nor in activity, suggesting that the defect is not a direct consequence of protein perturbation (Supplementary Figs. 1 and 6).

A first level of response to photosynthetic imbalance is through the phosphorylation network of the thylakoid proteins controlled, mostly, by the kinases STN7 and STN8 and their counteracting phosphatases^{23,30}. Due to the STN7- and STN8-dependent phosphorylation, the photosynthetic apparatus is capable to cope with rapid changes in the environmental conditions by maintaining an optimal photosynthetic efficiency (e.g. state transitions) and cope with damages to the photosystems (e.g. regulation of D1 repair cycle)^{39,40}. In high light, the overall thylakoid protein phosphorylation was decreased in *pgr6* compared to the wild type. Lower activity of the STN7 kinase is expected in plants shifted to high light, however, the analysis of the phosphorylation pattern indicated lower activities of both STN7 and STN8 kinases in *pgr6* (Fig. 2). The activity of both STN kinases is linked to the redox status of the PQ pool. Therefore, this defect can potentially be explained by an influence of *PGR6* on PQ. Although we cannot fully exclude that *PGR6* is a direct regulator of the STN kinases, this scenario seems a rather unlikely explanation for the photosynthetic defects observed in *pgr6*. Indeed, even the double knockout mutant of the STN kinases (*stn7/stn8*), which has an even lower level of phosphorylation of the target proteins than *pgr6*, does not display a defect in electron transport comparable to that of *pgr6* (Supplementary Fig. 2). Furthermore, *sps2*, which is genetically deprived of PQ, displays a phosphorylation defect similar to *pgr6* (Fig. 2).

The evidence so far points toward PQ as a key molecule regulated by *PGR6* activity. Biochemical and biophysical analyses were performed to assess whether there is a limitation of the photoactive PQ pool in *pgr6* (Fig. 3). The comparison between wild type, *pgr6* and *sps2* offers a suitable experimental system to test this model. Indeed, when the photoactive PQ pool is genetically limited, as in *sps2*, the

PSII input will be in excess over the electron capacity of the PQ pool at lower light intensity than in wild type (Supplementary Fig. 3). As a result, the fraction of closed PSII, unable to donate electrons to the photoactive PQ, will increase and thus limit the photosynthetic efficiency compared to wild type.

These data show that here the role of *PGR6* is to maintain the size of the photoactive PQ pool, i.e. the PQ available for the photosynthetic ETC. The lack of *PGR6* does not result in a visible phenotype under moderate light indicating that its activity is not essential under this light condition¹³. This can be rationalised assuming that the loss of photoactive PQ depends on the electron flux from the PSII. The electron flow is the result of the photon input (i.e. light intensity) minus the portion of absorbed photons dissipated as heat (NPQ)⁴¹. It is only during high light that the photoactive PQ pool will receive electrons in excess of the electron flow capacity and therefore an efficient supply of PQ from a reservoir (non-photoactive PQ pool) is required for its homeostasis¹². In this model, the role of *PGR6* is to ensure a rapid refill of the photoactive PQ pool, which is essential in high electron fluencies (high light) (Fig. 4). Consequently, in a *pgr6* mutant upon high light exposure, the photoactive PQ pool will be depleted limiting the amount of the electron carriers available for photosynthesis. Hydroxylation of the photoactive PQ may be the cause of said depletion, which becomes phenotypic when combined with an inefficient supply of newly synthesised PQ from storage compartments to the photoactive pool¹². However, no detectable difference in the level of accumulation of the hydroxyl-PQ has been observed between *pgr6* and the wild type (Supplementary Fig. 7). Although the most likely storage compartments capable of efficiently and quickly refilling the photoactive PQ are the plastoglobules, the contribution of the envelope-located PQ cannot be excluded.

The depletion of the photoactive PQ pool observed in *pgr6* upon exposure to 3-h high light may account for the reported electron transport limitation and resembles that of *sps2*. The observation that total PQ is not affected and there is no accumulation of hydroxyl-PQ in *pgr6* after 3 h of high light supports the model in which the cause for photoactive PQ pool depletion is the lack of an efficient refill from the PQ reservoir¹². The lower refill ratio can be explained by a lower mobility of PQ in *pgr6*. PQ mobility constraints would also explain the measurable increase in the fraction of closed PSII reaction centres (1-qP) and NPQ observed in *pgr6* plants grown under moderate light, where the photoactive PQ pool size is unaffected (Figs. 1, 3 and Supplementary Fig. 5) and the lower yield of electron transport from PSII to PQ ($\Phi_{\text{ET}20}$) (Supplementary Fig. 4). Additional evidence comes from measuring the electron transport as the output of the ETC at the level of P₇₀₀ (PSI) oxidation. The output defect of *pgr6* and *sps2* appears to be much larger than the lack of photoactive PQ measured biochemically. This is exceedingly evident in the *sps2* mutant, where the depletion of PQ caused by high light resulted in a drop of the measured electron transport to less than 1 electron, suggesting that the ETC is almost completely blocked (Table 1). However, there is still a measurable amount of available electron acceptors for PSII and therefore of available PQ molecules (Fig. 3a). The observation is consistent with previous studies on the *sps2* mutant⁴ and becomes highly relevant in the context of the defect in *pgr6*: the photoactive PQ pool appears only slightly diminished (Fig. 3d), but electron transport is disproportionately affected (Figs. 1c and 3a, b). This is consistent with the previous model, showing that a lower concentration of PQ in the photoactive pool cannot efficiently overcome the diffusion barriers affecting its access to the photosynthetic complexes⁴². Furthermore, by limiting its own mobility in the thylakoid membranes⁴², the exchange with the non-photoactive PQ pool will be impaired. Therefore, a combination of adequate photoactive PQ pool size,

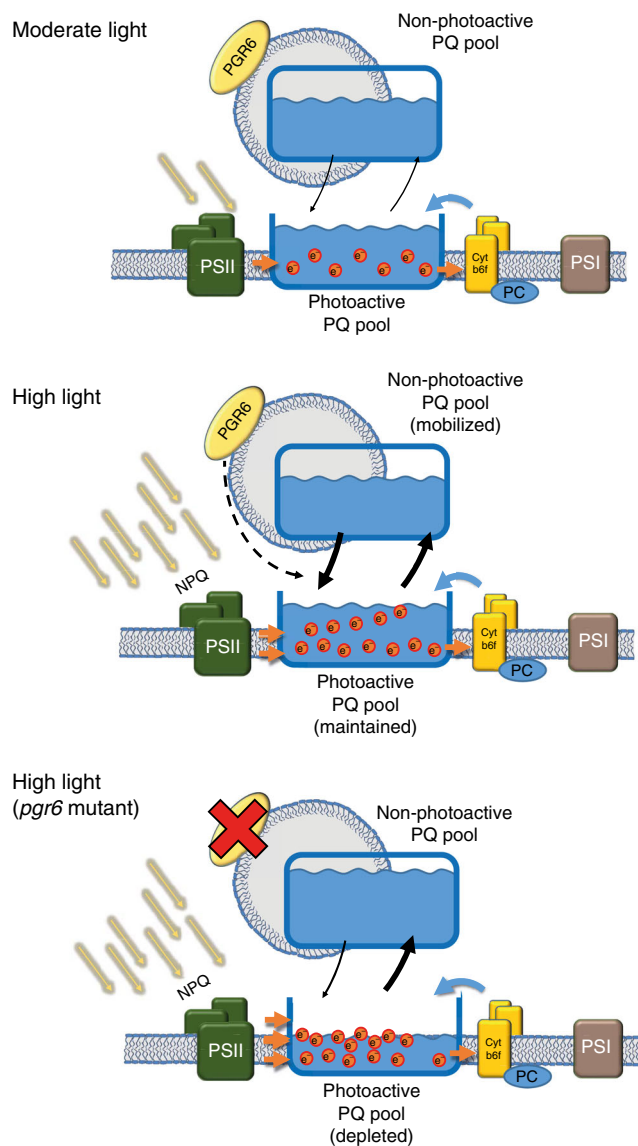


Fig. 4 Schematic representation of the regulation mediated by PGR6. Under moderate light intensity, the electron input from the PSII is compensated by the activity of cytochrome *b₆f* complex. Under this condition, the action of the two complexes is in equilibrium and maintains the photoactive PQ pool in balance thus allowing a continuous electron transport. When the light exceeds the electron transport capacity (high light), the electron input from the PSII is higher than the output from the cytochrome *b₆f*, this effect is partially mitigated by the thermal dissipation of light excess (NPQ). Under high light, the maintenance of the photoactive PQ depends as well on the mobilisation of the reservoir, i.e. the PQ stored in the non-photoactive pool. This mobilisation is possible thanks to the activity of PGR6, which regulates this redistribution thus allowing the preservation of the photoactive PQ pool under high light. In the absence of PGR6, the input from the non-photoactive pool is limited and therefore insufficient to replenish the photoactive PQ pool, furthermore, the lower NPQ induction causes an even stronger overreduction of the PQ pool, which further increases the loss of the photoactive PQ. These combined defects result in a reduction of growth and in developmental issues observed in *pgr6* mutant plants. Orange dots represent the electrons contained inside the pool, orange arrows represent the movement of the reduced PQ and blue arrows represent the movement of the oxidised form, while black arrows represent the rate of exchange between the photoactive and the non-photoactive PQ pools

PQ mobility and refill rate are required to ensure PQ homeostasis and photosynthetic efficiency. Perturbation of the electron flow through the photoactive PQ, which is also the molecular vector for proton transfer across the thylakoid membrane, will limit the trans-thylakoid proton gradient needed to activate the thermal dissipation of excess absorbed light (NPQ)⁴³. With a lower NPQ, the ETC will become even more overreduced since the electron input from PSII cannot be adequately controlled. This creates a negative loop that will further exacerbate the electron transport defect. The finding that both *pgr6* and *sps2* share common defects at the level of electron transport and NPQ (Fig. 1 and Supplementary Fig. 3) is also in accordance with this model. In the long term (i.e. several days of high light), these combined defects increase the high light dependent degradation of PQ¹² and will result in the depletion of the total PQ that was previously reported in *sps2*^{11,12} and *pgr6*¹⁷.

A defect in PQ mobility and availability may also explain the previously reported defect in carotenoid accumulation in *pgr6*^{17,19}. Oxidised PQ functions as a sink for the electrons removed during the desaturase reactions of carotenoid biosynthesis; a limitation in the access, mobility and/or concentration of PQ may hamper this process and would lead to a lower level of carotenoid production. The consequence of this scenario would be similar to the one of *immutans* that lacks the terminal PQ oxidase²¹. Interestingly, this mutant is also characterised by a variegated light-dependent phenotype similar to the one observed in *pgr6* exposed to high light. Finally, alteration of the size (and accessibility) of the photoactive PQ pool would explain long-term effects of *pgr6* on chloroplast to nucleus communication, thus providing a rationale for the pale cotyledon phenotype reported when grown under constant red light⁴⁴.

In conclusion, our results indicate that in order to maintain photoactive PQ as well as photosynthetic efficiency while preventing long-term photodamage^{17,19} under high light, plants have evolved a PQ homeostasis mechanism controlled by the PGR6 kinase (Fig. 4). The observed depletion of photoactive PQ in *pgr6* after 3-h high light explains the diminished STN7 activity on LHCI together with the measured effects on state transitions. Also, the proton gradient regulation phenotype considering that the lack of photoactive PQ will generate a smaller trans-thylakoid proton gradient, which is needed to activate the NPQ mechanism⁴³, and the lack of this protective mechanism results in increased chlorophyll fluorescence, which is the signature phenotype of all *pgr* mutants¹³. Considering its subcellular localisation on plastoglobules, it is tempting to hypothesise that the role of PGR6 is to control the release of PQ from plastoglobules supplying the ETC in the thylakoid membrane¹². In support of this model, there was a measurable increase in PQ concentration in *pgr6* plastoglobules compared to wild type suggesting PQ trapping in the non-photoactive pool (Supplementary Fig. 8).

Methods

Plants material and treatments. *Arabidopsis thaliana* wild-type plant refers to var. Columbia-0 (Col-0). *pgr6-1* T-DNA insertion line (SALK_068628) and *pgr6-2* T-DNA insertion line (SALK_130499C) were purchased at Nottingham Arabidopsis Stock Centre (NASC, <http://arabidopsis.info>). *stn7/stn8* and *sps2* were gifts from Prof. Goldschmidt-Clermont and from Prof. Basset, respectively.

Seedlings were grown for 14 days in 0.5× MS plates under continuous light condition ($80\mu\text{mol m}^{-2}\text{s}^{-1}$ for control and $500\mu\text{mol m}^{-2}\text{s}^{-1}$ for the high light). Plants were grown on soil with solbac (Andermatt) under moderate light conditions ($120\mu\text{mol m}^{-2}\text{s}^{-1}$, 20–22 °C and 8 h light/16 h dark) in a controlled environment room. For high light treatment, 4–5-week-old plants were exposed to $500\mu\text{mol m}^{-2}\text{s}^{-1}$, 20–22 °C, for 3 h.

Samples were collected under light, directly frozen in liquid nitrogen and stored at –20 °C.

Photosynthetic parameters. Maximum quantum yield of PSII (Φ_{PSII}), quantum yield of PSII (Φ_{PSII}) and NPQ were determined using Fluorcam (Photon System Instrument, Czech Republic, <http://www.psi.cz>) with blue light LED (470nm). Plants were dark adapted for 10min before measurements. $\Phi_{\text{MAX}} = (F_V/F_M)$; $\Phi_{\text{PSII}} = (F_M' - F_0)/F_M'$; and $\text{NPQ} = (F_M - F_M')/F_M'$; where F_M is maximum fluorescence; F_0 is minimum fluorescence; F_V is the variable fluorescence ($F_M - F_0$) in dark-adapted state; F_M' is maximum fluorescence; and F_5 is steady-state chlorophyll fluorescence in the light³⁵. The employed PPF, (photosynthetic photon flux density), measured by LI-189 photometer (LI-COR), are 2.5–95–347–610–876–1145 $\mu\text{mol m}^{-2} \text{s}^{-1}$. State transitions were measured with the same instrument. After measurement of the F_0 and F_M , plants were exposed to 10min red light ($50 \mu\text{mol m}^{-2} \text{s}^{-1}$ 660nm peak measured as PPF) supplemented with far red ($17 \mu\text{mol m}^{-2} \text{s}^{-1}$ calculated from the 733nm peak area considering values between 500 and 800nm). At the end of this phase, the F_M' ($F_{M\text{ST}1}$) was measured, and then the FAR light was turned off. The transition from state 1 to state 2 was followed during 10min, then again the F_M' ($F_{M\text{ST}2}$) was measured. Quenching related to state transition (qT) was calculated as $qT = (F_{M\text{ST}1} - F_{M\text{ST}2})/F_M$.

Chlorophyll a fluorescence curve kinetics (OJIP, JIP test). Fast chlorophyll, a fluorescence induction (OJIP, JIP-test) kinetics, were measured at room temperature using a plant efficiency analyser (Handy-PEA; Hansatech Ltd., King's Lynn, Norfolk, England), following manufacturer instructions. Plants were dark adapted for 10min before measurements. Measured data were extracted with the WinPEA software (Hansatech) and analysed with JIP-test according to Strasser et al. (2010)³³ and Kalaji et al. (2014)³⁴. In detail, ΦPo (maximum quantum yield of primary PSII photochemistry) was calculated as $1 - F_0/F_M$. $\Phi\text{ET}2_0$ (quantum yield of the electron transport from Q_A to Q_B) as $(F_M - F_0)/F_M$ ($1 - (F_{2ms} - F_0)/(F_M - F_0)$). $\Phi\text{RE}1_0$ (quantum yield of the electron transport until the PSI electron acceptors) as $((F_M - F_0)/F_M) (1 - (F_{30ms} - F_0)/(F_M - F_0))$. Where F_M is the maximum fluorescence, F_0 the minimal fluorescence calculated by the Handy-PEA, F_{2ms} and F_{30ms} are the fluorescence levels measured at 2 and 30ms, respectively.

P₇₀₀ oxidation. The kinetics of PSI photooxidation were measured on detached leaves using a JTS-10 LED spectrometer (BioLogic Science Instruments) in absorbance mode.

P_{700} oxidation was assessed by increase in absorption at 810nm (after deconvolution of plastocyanin absorption, as described in Joliot and Joliot⁶). FAR illumination was provided by a LED peaking at 735 nm, filtered through three Wratten filters 55 that block wavelengths shorter than 700nm. When needed, the maximum extent of P_{700}^+ was estimated by imposing a white light saturating flash on top of the FAR. A red LED provided actinic light peaking at 640nm⁴⁵. In order to measure the number of electrons present in the ETC per PSI, the plants were incubated 2min under strong white light ($500 \mu\text{mol m}^{-2} \text{s}^{-1}$) in order to reduce the contribution of the cyclic electron flow by activating CO_2 assimilation in the leaves⁶. Reactivation of cyclic flow only occurs after a long period of dark^{6,45}. Therefore, after a short dark adaptation, electrons available to P_{700}^+ are only reflecting the reduction level of the PSI donors including the PQ pool. We exposed the leaf to FAR for 2min to oxidise the ETC and, after 2 s of dark adaptation to allow P_{700} reduction, we followed its reoxidation induced by FAR either in the presence or in the absence of a short saturating flash of actinic light ($1000 \mu\text{mol m}^{-2} \text{s}^{-1}$ for 100 μs) to fully reduce the ETC. The time interval between the beginning of FAR illumination and the beginning of P_{700} oxidation was measured after a saturating pulse (PSI electron donors reduced) and after dark incubation (PSI electron donors oxidised). The ratio between these two values is used as a proxy for the number of available electrons per PSI (Supplementary Fig. 9).

Immunoblot analysis. Total proteins were extracted from *Arabidopsis* light-exposed leaves and homogenised in 400 μL of lysis buffer (100mM Tris-HCl pH 8.5, 2% SDS, 10mM NaF and 0.05% of protease inhibitor cocktail for plant (Sigma)) with a micro pestle in a 1.5mL microtube. Proteins were denatured at 37 °C for 30min, then centrifuged for 5 min at 16,000 g at room temperature. Two hundred microliters of supernatant were precipitated by chloroform-methanol, then resuspended in sample buffer (50mM Tris-HCl pH 6.8, 100mM dithiothreitol, 2% SDS, 0.1% bromophenol blue and 10% Glycerol) at 0.5 μg chlorophyll per μL and denatured at 65 °C for 10 min. Five-ten microliters of supernatant was mixed with 1mL of 80% acetone and chlorophylls concentration was determined according to Arnon (1949)⁴⁶. An amount of thylakoids equivalent to 2 μg of chlorophyll were loaded. Proteins were separated by 12% SDS-PAGE and transferred onto a nitrocellulose membrane for western blotting.

For Phostag[™]-pendant acrylamide gels, we followed the protocol for the antenna proteins previously described in Longoni et al.⁴⁷. For the detection of PSII core subunits and STN7 phosphorylation, the protocol was modified as follows: a Phostag[™] gradient (0 to 25 μM) and $\text{Zn}(\text{NO}_3)_2$ (0 to 50 μM) was made in the upper half of the resolving 7% acrylamide in 0.35 M Bis-Tris pH 6.8 gel. The stacking gel (4% acrylamide and 0.35 M Bis-Tris pH 6.8) was casted above the resolving gel. The gels were incubated at room temperature for at least 3 h before loading. Samples were prepared as previously described in Longoni et al.⁴⁷. Briefly, total leaf protein were ground in liquid nitrogen and resuspend in lysis buffer (100mM Tris HCl pH 7.8, 2% SDS, 10 mM NaF, 1 \times cOmplete[™] and EDTA-free protease inhibitor cocktail (Roche)). Following incubation at 37 °C for 30' in agitation (1000 r.p.m Eppendorf thermomixer) protein content was measured with the Bicinchoninic Acid Protein Assay Kit (Sigma-Aldrich) and samples were diluted to

equal protein concentration (0.5 $\mu\text{g}/\mu\text{L}$). Samples were further diluted in 2 \times lithium dodecyl sulfate (LDS) loading buffer (10% glycerol, 244mM Tris HCl pH 8.5, 2% LDS, 0.33 mM Coomassie Brilliant Blue G-250 and 100mM dithiothreitol) and heated for 5 min at 70 °C before loading.

Immunodetections were performed using anti-Actin (Sigma, A 0480) at 1/3000 dilution in 5% fat free milk/PBS, anti-Lhcb1 (Agrisera, AS09 522), anti-Lhcb2 (Agrisera, AS01 003), anti-D1 (PsbA) (Agrisera, AS05 084), anti-PsbO (Agrisera, AS14 2825), anti-PetC (Agrisera, AS08 330); anti-PsaD (Agrisera, AS09 461), anti-PsaC (Agrisera, AS04 042P), anti-AtpC (Agrisera, AS08 312); anti-STN7 (Agrisera, AS16 4098), anti-PsbD (Agrisera, AS06 146) at 1/5000 dilution in 5% fat free milk/TBS and anti-Phosphothreonine (Cell Signaling Technology, #9381) at 1/10'000 in 3% BSA/TBS Tween20 0.1%. Secondary antibodies (anti-rabbit (Merck, AP132P) or anti-mouse (Sigma, A5278) at 1/3000) conjugated with HRP allow the detection of proteins of interest with 1mL of enhanced chemiluminescence and 3.3 μL of H_2O_2 3% using an imager for chemiluminescence (Amersham Imager 600, Amersham Biosciences, Inc).

PQ analysis. Small leaf discs (0.8cm diameter) were taken from 5-week-old plants. Total lipids were extracted after 15 s of saturating white light ($2000 \mu\text{mol m}^{-2} \text{s}^{-1}$) using a fibre-optic system allowing a maximal reduction of the PQ pool. Samples were directly flash frozen in liquid nitrogen at the end of the light treatment while still illuminated. A second disc from the same leaf was treated with FAR light (735nm and 5.5 $\mu\text{mol m}^{-2} \text{s}^{-1}$) for 2 min allowing a maximal oxidation of the PQ pool. For prenyl lipid determination, samples were grinded immediately in the frozen state and extracted with cold ethyl acetate. This step as well as the analyses were performed as described in Kruk and Karpinski⁵ and Ksas et al.^{11,12}. The photoactive PQ pool was determined from the difference between the reduced PQ after 2 min of FAR light, upon which all the photoactive pool is oxidised, and the reduced PQ after a high irradiance light flash, upon which all the photoactive pool is reduced. Plastoglobule isolation from chloroplasts and prenyl lipid analysis were performed according to Martinis et al.⁴⁸ and Eugeni-Piller et al.⁴⁹. Intact chloroplast were extracted from entire leaves by grinding in HB buffer (Sorbitol 450mM, Tricine-KOH pH 8.4 20mM, EDTA pH 8.4 10mM, NaHCO_3 10mM, MnCl_2 1mM, Na-ascorbate 5mM and PMSF 1mM). The chloroplast were filtered through two layers of miracloth (Merck Millipore) and collected by centrifugation (5600 \times g). The chloroplasts were lysate by osmotic shock in TED buffer (Tricine pH 7.5 50mM, EDTA- Na_2 2mM and dithiothreitol 2mM) supplemented with 0.6 M sucrose. Chloroplasts were diluted to a concentration of 2 mg/ml of chlorophyll and incubated for 10' on ice to allow a complete lysis and further incubated for 2 h at -80 °C. The samples were diluted four times in TED buffer. The sample was homogenate 20 times with a Dounce homogeniser (PTFE Tissue grinder 50cm3, VWR[®]). The membranes and plastoglobules were separated from the stroma by ultracentrifugation (60' 100,000 \times g at 4 °C). The pellet was dissolved in TED buffer supplemented with 45% sucrose to a concentration of 2–3mg/mL of chlorophyll. Further homogenisation of the sample was performed with a Dounce homogeniser (20 times). This solution was used as a lower phase of a discontinuous sucrose gradient. The gradient was assembled in TED buffer with the following sucrose concentrations: 15mL of sample in 45% sucrose, 6mL of 38% sucrose, 6mL of 20% sucrose, 4mL of 15% sucrose and 8mL of 5% sucrose. The gradient was centrifuged to allow the fractionation by flotation (16 h, 100,000 \times g at 4 °C). One-milliliter fractions were collected from the top of the gradient. The lipids from each fraction were extracted with ethyl -acetate (0.75 volumes, 2 times), the ethyl-acetate phase was recovered upon centrifugation (1' 10,000 \times g) and dried in a speedvac. The dried pellet was solubilized in a tetrahydrofuran-methanol (1:1) solution, and used for UHPLC-APCI-MS-QTOF analysis.

Statistics and reproducibility. The sample size was determined empirically for each experiment (minimum of three independent organism and two experimental replicates), on the basis of experience with similar assays and from sample sizes generally used by other investigators. No data were excluded from the analysis. The experiment were replicated at least two times, the results were reproducible when the plants were not stressed before the experiment. When testing light condition, the position of the plants of different genotypes was changed randomly in order to reduce any possible positioning effect. The data were compared for statistical difference by a two-tailed, heteroscedastic Student's *t* test (Excel 2016).

Reporting Summary. Further information on research design is available in the Nature Research Reporting Summary linked to this article.

Data availability

The datasets analysed in this paper are included in this published article (and its supplementary information files). Further datasets generated during the current study are available from the corresponding author on reasonable request.

Received: 5 February 2019 Accepted: 17 May 2019

Published online: 20 June 2019

References

- Tikhonov, A. N. pH-dependent regulation of electron transport and ATP synthesis in chloroplasts. *Photosynth. Res.* **116**, 511–534 (2013).
- Rochaix, J. D. Regulation of photosynthetic electron transport. *Biochim. Biophys. Acta* **1807**, 375–383 (2011).
- Van Eerden, F. J., Melo, M. N., Frederix, P., Periole, X. & Marrink, S. J. Exchange pathways of plastoquinone and plastoquinol in the photosystem II complex. *Nat. Commun.* **8**, 15214 (2017).
- Block, A. et al. Functional modeling identifies paralogous solanesyl-diphosphate synthases that assemble the side chain of plastoquinone-9 in plastids. *J. Biol. Chem.* **288**, 27594–27606 (2013).
- Kruk, J. & Karpinski, S. An HPLC-based method of estimation of the total redox state of plastoquinone in chloroplasts, the size of the photochemically active plastoquinone-pool and its redox state in thylakoids of *Arabidopsis*. *Biochim. Biophys. Acta* **1757**, 1669–1675 (2006).
- Joliot, P. & Joliot, A. Cyclic electron flow in C3 plants. *Biochim. Biophys. Acta* **1757**, 362–368 (2006).
- van Wijk, K. J. & Kessler, F. Plastoglobuli: plastid microcompartments with integrated functions in metabolism, plastid developmental transitions, and environmental adaptation. *Annu. Rev. Plant Biol.* **68**, 253–289 (2017).
- Kruk, J., Szymanska, R., Cela, J. & Munne-Bosch, S. Plastochromanol-8: fifty years of research. *Phytochemistry* **108**, 9–16 (2014).
- Giacometti, G. M., Barbato, R., Chiaromonte, S., Friso, G. & Rigoni, F. Effects of ultraviolet-B radiation on photosystem II of the cyanobacterium *Synechocystis* sp. PCC 6083. *Eur. J. Biochem.* **242**, 799–806 (1996).
- Trebst, A. & Pistorius, E. Photosynthetische reaktionen in UV-bestrahlten chloroplasten. *Z. für Naturforschung B* **20**, 885–889 (1965).
- Ksas, B., Becuwe, N., Chevalier, A. & Havaux, M. Plant tolerance to excess light energy and photooxidative damage relies on plastoquinone biosynthesis. *Sci. Rep.* **5**, 10919 (2015).
- Ksas, B. et al. The plastoquinone pool outside the thylakoid membrane serves in plant photoprotection as a reservoir of singlet oxygen scavengers. *Plant Cell Environ.* **41**, 2277–2287 (2018).
- Shikanai, T., Munekage, Y., Shimizu, K., Endo, T. & Hashimoto, T. Identification and characterization of *Arabidopsis* mutants with reduced quenching of chlorophyll fluorescence. *Plant Cell Physiol.* **40**, 1134–1142 (1999).
- Lundquist, P. K. et al. The functional network of the *Arabidopsis* plastoglobule proteome based on quantitative proteomics and genome-wide coexpression analysis. *Plant Physiol.* **158**, 1172–1192 (2012).
- Vidi, P. A. et al. Tocopherol cyclase (VTE1) localization and vitamin E accumulation in chloroplast plastoglobule lipoprotein particles. *J. Biol. Chem.* **281**, 11225–11234 (2006).
- Ytterberg, A. J., Peltier, J. B. & van Wijk, K. J. Protein profiling of plastoglobules in chloroplasts and chromoplasts. A surprising site for differential accumulation of metabolic enzymes. *Plant Physiol.* **140**, 984–997 (2006).
- Martinis, J. et al. ABC1K1/PGR6 kinase: a regulatory link between photosynthetic activity and chloroplast metabolism. *Plant J.* **77**, 269–283 (2014).
- Yang, M. et al. *Arabidopsis* atypical kinase ABC1K1 is involved in red light-mediated development. *Plant Cell Rep.* **35**, 1213–1220 (2016).
- Lundquist, P. K. et al. Loss of plastoglobule kinases ABC1K1 and ABC1K3 causes conditional degreening, modified prenyl-lipids, and recruitment of the jasmonic acid pathway. *Plant Cell* **25**, 1818–1839 (2013).
- Kato, Y., Miura, E., Ido, K., Ifuku, K. & Sakamoto, W. The variegated mutants lacking chloroplastic FtsHs are defective in D1 degradation and accumulate reactive oxygen species. *Plant Physiol.* **151**, 1790–1801 (2009).
- Wetzel, C. M., Jiang, C. Z., Meehan, L. J., Voytas, D. F. & Rodermel, S. R. Nuclear-organelle interactions: the immutans variegation mutant of *Arabidopsis* is plastid autonomous and impaired in carotenoid biosynthesis. *Plant J.* **6**, 161–175 (1994).
- Zagari, N. et al. SNOWY COTYLEDON 2 promotes chloroplast development and has a role in leaf variegation in both lotus *japonicus* and *Arabidopsis thaliana*. *Mol. Plant* **10**, 721–734 (2017).
- Mekala, N. R., Suorsa, M., Rantala, M., Aro, E. M. & Tikkanen, M. Plants actively avoid state transitions upon changes in light intensity: role of light-harvesting complex II protein dephosphorylation in high light. *Plant Physiol.* **168**, 721–734 (2015).
- Bellafore, S., Barneche, F., Peltier, G. & Rochaix, J. D. State transitions and light adaptation require chloroplast thylakoid protein kinase STN7. *Nature* **433**, 892–895 (2005).
- Rochaix, J. D. Redox regulation of thylakoid protein kinases and photosynthetic gene expression. *Antioxid. Redox Signal.* **18**, 2184–2201 (2013).
- Shapiguzov, A. et al. Activation of the St7/STN7 kinase through dynamic interactions with the cytochrome b6f complex. *Plant Physiol.* **171**, 82–92 (2016).
- Trotta, A., Suorsa, M., Rantala, M., Lundin, B. & Aro, E. M. Serine and threonine residues of plant STN7 kinase are differentially phosphorylated upon changing light conditions and specifically influence the activity and stability of the kinase. *Plant J.* **87**, 484–494 (2016).
- Pietrzykowska, M. et al. The light-harvesting chlorophyll a/b binding proteins Lhcb1 and Lhcb2 play complementary roles during state transitions in *Arabidopsis*. *Plant Cell* **26**, 3646–3660 (2014).
- Bonardi, V. et al. Photosystem II core phosphorylation and photosynthetic acclimation require two different protein kinases. *Nature* **437**, 1179–1182 (2005).
- Schonberg, A. et al. Identification of STN7/STN8 kinase targets reveals connections between electron transport, metabolism and gene expression. *Plant J.* **90**, 1176–1186 (2017).
- Tikkanen, M., Nurmi, M., Kangasjarvi, S. & Aro, E. M. Core protein phosphorylation facilitates the repair of photodamaged photosystem II at high light. *Biochim. Biophys. Acta* **1777**, 1432–1437 (2008).
- Bailey, S. et al. A critical role for the Var2 FtsH homologue of *Arabidopsis thaliana* in the photosystem II repair cycle in vivo. *J. Biol. Chem.* **277**, 2006–2011 (2002).
- Strasser, R. J., Tsimilli-Michael, M., Qiang, S. & Goltsev, V. Simultaneous in vivo recording of prompt and delayed fluorescence and 820-nm reflection changes during drying and after rehydration of the resurrection plant *Haberlea rhodopensis*. *Biochim. Biophys. Acta* **1797**, 1313–1326 (2010).
- Kalaji, H. M. et al. Identification of nutrient deficiency in maize and tomato plants by in vivo chlorophyll a fluorescence measurements. *Plant Physiol.* **81**, 16–25 (2014).
- Maxwell, K. & Johnson, G. N. Chlorophyll fluorescence—a practical guide. *J. Exp. Bot.* **51**, 659–668 (2000).
- Graan, T. & Ort, D. R. Quantitation of the rapid electron donors to P700, the functional plastoquinone pool, and the ratio of the photosystems in spinach chloroplasts. *J. Biol. Chem.* **259**, 14003–14010 (1984).
- Finazzi, G. et al. Involvement of state transitions in the switch between linear and cyclic electron flow in *Chlamydomonas reinhardtii*. *EMBO Rep.* **3**, 280–285 (2002).
- Finazzi, G. et al. Function-directed mutagenesis of the cytochrome b6f complex in *Chlamydomonas reinhardtii*: involvement of the CD loop of cytochrome b6 in quinol binding to the Q(o) site. *Biochemistry* **36**, 2867–2874 (1997).
- Pesaresi, P., Pribil, M., Wunder, T. & Leister, D. Dynamics of reversible protein phosphorylation in thylakoids of flowering plants: the roles of STN7, STN8 and TAP38. *Biochim. Biophys. Acta* **1807**, 887–896 (2011).
- Tikkanen, M., Grieco, M., Kangasjarvi, S. & Aro, E. M. Thylakoid protein phosphorylation in higher plant chloroplasts optimizes electron transfer under fluctuating light. *Plant Physiol.* **152**, 723–735 (2010).
- Genty, B., Harbinson, J., Briantais, J. M. & Baker, N. R. The relationship between non-photochemical quenching of chlorophyll fluorescence and the rate of photosystem 2 photochemistry in leaves. *Photosynth. Res.* **25**, 249–257 (1990).
- Lavergne, J. & Joliot, P. Restricted diffusion in photosynthetic membranes. *Trends Biochem. Sci.* **16**, 129–134 (1991).
- Müller, P., Li, X. P. & Niyogi, K. K. Non-photochemical quenching. A response to excess light energy. *Plant Physiol.* **125**, 1558–1566 (2001).
- Huang, H., Yang, M., Su, Y., Qu, L. & Deng, X. W. *Arabidopsis* atypical kinases ABC1K1 and ABC1K3 act oppositely to cope with photodamage under red light. *Mol. Plant* **8**, 1122–1124 (2015).
- Trouillard, M. et al. Kinetic properties and physiological role of the plastoquinone terminal oxidase (PTOX) in a vascular plant. *Biochim. Biophys. Acta* **1817**, 2140–2148 (2012).
- Arnon, D. I. Copper enzymes in isolated chloroplasts. polyphenoloxidase in *Beta vulgaris*. *Plant Physiol.* **24**, 1–15 (1949).
- Longoni, P., Douchi, D., Cariti, F., Fucile, G. & Goldschmidt-Clermont, M. Phosphorylation of the light-harvesting complex II isoform Lhcb2 is central to state transitions. *Plant Physiol.* **169**, 2874–2883 (2015).
- Martinis, J., Kessler, F. & Glauser, G. A novel method for prenylquinone profiling in plant tissues by ultra-high pressure liquid chromatography-mass spectrometry. *Plant Methods* **7**, 23 (2011).
- Eugeni-Piller, L., Glauser, G., Kessler, F. & Besagni, C. Role of plastoglobules in metabolite repair in the tocopherol redox cycle. *Front. Plant Sci.* **5**, 10.3389/fpls.2014.00298 (2014).

Acknowledgements

This work was supported by the Swiss National Science Foundation (SNSF) grants 31003A_156998 and 31003A_176191. G.F. acknowledges funding by the HFSP RGP0052 project and the INRA AAP project PURIST funds from the GRAL (ANR-10-LABX-49-01) labex. We thank Prof. Goldschmidt-Clermont for his helpful discussion and support during the project.

Author contributions

T.P., V.S., P.L. and F.K. designed experiments. T.P., P.L., G.G., B.K., J.C., S.D., M.H. and G.F. performed all experiments. T.P., V.S., P.L., M.H., G.F. and F.K. contributed to the

analysis and the interpretation of the results. T.P., V.S., P.L., M.H., G.F. and F.K. wrote the manuscript.

Additional information

Supplementary information accompanies this paper at <https://doi.org/10.1038/s42003-019-0477-4>.

Competing interests: The authors declare no competing interests.

Reprints and permission information is available online at <http://npg.nature.com/reprintsandpermissions/>

Publisher's note: Springer Nature remains neutral with regard to jurisdictional claims in published maps and institutional affiliations.



Open Access This article is licensed under a Creative Commons Attribution 4.0 International License, which permits use, sharing, adaptation, distribution and reproduction in any medium or format, as long as you give appropriate credit to the original author(s) and the source, provide a link to the Creative Commons license, and indicate if changes were made. The images or other third party material in this article are included in the article's Creative Commons license, unless indicated otherwise in a credit line to the material. If material is not included in the article's Creative Commons license and your intended use is not permitted by statutory regulation or exceeds the permitted use, you will need to obtain permission directly from the copyright holder. To view a copy of this license, visit <http://creativecommons.org/licenses/by/4.0/>.

© The Author(s) 2019