



Variational Estimation of the Large-scale Time-dependent Meridional Circulation in the Sun: Proofs of Concept with a Solar Mean Field Dynamo Model

Ching Pui Hung, Allan Sacha Brun, Alexandre Fournier, Laurène Jouve, Olivier Talagrand, Mustapha Zakari

► To cite this version:

Ching Pui Hung, Allan Sacha Brun, Alexandre Fournier, Laurène Jouve, Olivier Talagrand, et al.. Variational Estimation of the Large-scale Time-dependent Meridional Circulation in the Sun: Proofs of Concept with a Solar Mean Field Dynamo Model. The Astrophysical Journal, 2017, 849 (2), pp.160. 10.3847/1538-4357/aa91d1 . cea-02127665

HAL Id: cea-02127665

<https://cea.hal.science/cea-02127665>

Submitted on 13 May 2019

HAL is a multi-disciplinary open access archive for the deposit and dissemination of scientific research documents, whether they are published or not. The documents may come from teaching and research institutions in France or abroad, or from public or private research centers.

L'archive ouverte pluridisciplinaire **HAL**, est destinée au dépôt et à la diffusion de documents scientifiques de niveau recherche, publiés ou non, émanant des établissements d'enseignement et de recherche français ou étrangers, des laboratoires publics ou privés.

VARIATIONAL ESTIMATION OF THE LARGE SCALE TIME DEPENDENT MERIDIONAL CIRCULATION IN THE SUN: PROOFS OF CONCEPT WITH A SOLAR MEAN FIELD DYNAMO MODEL

CHING PUI HUNG^{1,2}, ALLAN SACHA BRUN², ALEXANDRE FOURNIER¹, LAURÈNE JOUVE^{2,3}, OLIVIER TALAGRAND⁴,
 MUSTAPHA ZAKARI¹

¹ Institut de Physique du Globe de Paris, Sorbonne Paris Cité, Université Paris Diderot UMR 7154 CNRS, F-75005 Paris, France

² Laboratoire AIM Paris-Saclay, CEA/IRFU Université Paris-Diderot CNRS/INSU, 91191 Gif-Sur-Yvette, France

³ Université de Toulouse, UPS-OMP, Institut de Recherche en Astrophysique et Planétologie, 31028 Toulouse Cedex 4, France

⁴ Laboratoire de météorologie dynamique, UMR 8539, Ecole Normale Supérieure, Paris Cedex 05, France

Draft version November 5, 2018

Abstract

We present in this work the development of a solar data assimilation method based on an axisymmetric mean field dynamo model and magnetic surface data, our mid-term goal is to predict the solar quasi cyclic activity. Here we focus on the ability of our algorithm to constrain the deep meridional circulation of the Sun based on solar magnetic observations. To that end, we develop a variational data assimilation technique. Within a given assimilation window, the assimilation procedure minimizes the differences between data and the forecast from the model, by finding an optimal meridional circulation in the convection zone, and an optimal initial magnetic field, via a quasi-Newton algorithm. We demonstrate the capability of the technique to estimate the meridional flow by a closed-loop experiment involving 40 years of synthetic, solar-like data. By assimilating the synthetic magnetic proxies annually, we are able to reconstruct a (stochastic) time-varying meridional circulation which is also slightly equatorially asymmetric. We show that the method is robust in estimating a flow whose level of fluctuation can reach 30% about the average, and that the horizon of predictive capability of the method is of the order of 1 cycle length.

Keywords: Sun: meridional circulation, activity, dynamo, methods: numerical, data assimilation

1. INTRODUCTION

1.1. Solar activity: Observations and Models

The Sun is an active star. Solar activity includes surface magnetic variability, solar eruption, coronal activity and its effects on planets through magnetic disturbances. The Sun is a nonlinear system and it is a real challenge to predict its future activity. Since solar activity impacts space-weather, which in turn alters our modern technology-based society significantly, it has become increasingly important to obtain good solar predictions. The most common index to quantify solar activity is the sunspot number (SSN). (For recent discussion of SSN, see Clette & Lefèvre 2012; Clette et al. 2014; Svalgaard & Schatten 2016; Vaquero et al. 2016). Sunspots are dark areas on the solar disc, where mostly vertical magnetic field of $\sim 3\text{kG}$ peak values, is present (Stix 2002). In 1850, Rudolf Wolf introduced the relative sunspot number $R_z = k(10g + s)$, where g is the number of sunspot groups, s is the number of individual sunspots, k is a constant to account for the differences in observations from various observers and astronomers (Wolf 1850). The corresponding sunspot series started in 1749. In addition to the sunspot number, the surface magnetic field of the Sun is also an important observable. Observations of solar magnetic field can at least be traced back as early as in 1908 through the pioneering observations of Hale (1908). Systematic, daily observations of solar magnetic field over the solar disk started in early 1970s at the Kitt Peak National Observatory, with synoptic maps nearly continuously measured from early 1975 through mid 2003 (Hathaway 2010). Tracing the surface radial magnetic field as a function of time and latitude, aver-

aged over longitude, enables to construct the so-called butterfly diagram. It shows the position where sunspots appear during a solar cycle, and exhibits their phase relationship with the strength of the polar field. One of the most prominent features of the solar activity is the quasiperiodicity of the sunspot cycles of 11 years. Those cycles, however, vary in both their period and their amplitude (for more recent time series, consult Svalgaard et al. 2017).

The long-term (multi-decadal) variation shows randomness, but with highs in sunspot number every 7 or 8 cycles (Gleissberg 1939; Usoskin 2013). Furthermore, sometimes the solar activity is broken up; the periods of such depression are called grand minima. The significant modulation of solar activity raises questions regarding its predictability. Studies suggest that the predictability also depends on whether the source of the variability of solar dynamo is deterministic or not (Ossendrijver et al. 2002; Tobias et al. 1998; Brandenburg & Spiegel 2008); even a weak stochastic perturbation can lead to a loss in predictability (Bushby & Tobias 2007).

Dynamo models based on magnetohydrodynamics (MHD) are a common class of models established to account for the solar activity (Charbonneau 2010). The model used in our assimilation framework (to be discussed below) is a dynamo model based on the mean field induction equation, in spherical coordinates with azimuthal symmetry. Its mechanism was proposed by Babcock (1961) and elaborated by Leighton (1969). This model can also account for Joy's law (Hale et al. 1919). Numerical studies of the so-called Babcock-Leighton dynamo model are widely established (e.g. Dikpati & Charbonneau 1999; Jouve & Brun 2007, and references

therein).

In this flux transport solar dynamo model, the meridional circulation in the convection zone is the key ingredient determining the length of the solar cycle. The effects of the meridional circulation on the magnetic cycle and magnetic field are investigated in detail in Jouve & Brun (2007), Hazra et al. (2014) and Belucz et al. (2015). A meridional circulation with one cell per hemisphere is frequently used as a reference in this model to account for the cycle length, maxima and phase relationship in solar activity. Additional cells in radius and latitude can result in different effects on the advection of magnetic field and cycle length. A 2-cell in radius meridional flow implies the presence of a return flow at mid-depth which slows down the transport of the flux from the surface to the tachocline, resulting in a longer cycle length. The flow becomes poleward at the tachocline thus introducing a poleward branch in the time-latitude plot of the toroidal flow at the base of the convection zone. The toroidal field at the base is weaker than that of the unicellular case as the polar fields are advected from the bottom at low latitudes rather than being brought from the poles. On the other hand, for a dynamo model with a 2-cell in latitude (in each hemisphere) meridional flow, the cycle length is shorter than in the unicellular case because of the shorter primary conveyor belt, while a poleward branch in the toroidal field at the tachocline is also present, as in the 2-cell in radius case. For a larger number of latitudinal cells, the toroidal field at the base is also weaker than in the unicellular case as the dynamo is confined to low latitudes where the differential rotation is smaller (Belucz et al. 2015). It is also found that the influence of having several radial cells on the model is stronger than that of adding cells in latitude (see Jouve & Brun 2007, for details).

While a flux transport dynamo model with unicellular meridional circulation is commonly used to account for the 11-yr solar activity, recent estimate of meridional circulation from helioseismology below the solar surface suggests the possibility of more complex flow structures. For example, in Zhao et al. (2013a), a meridional circulation with 2 cells in the radial direction is reported, though the errors of the estimate below $0.80R_{\odot}$ (R_{\odot} is the solar radius) are considerably higher than that at the surface. In Schad et al. (2013), more complicated structure like 2 cells in radius and 4 cells in latitude is suggested, based on perturbation of Solar p-modes eigenfunctions by meridional flow. Submerged meridional cell has been discovered by local helioseismic technique of ring diagram analysis of MDI data from 1998-2001, which disrupts the orderly poleward flow and equatorial symmetry in those years (Haber et al. 2002b). Time distance helioseismic measurements using GONG data also suggest multicellular large scale meridional flow in the convection zone (Kholikov et al. 2014). In summary, there is no unique conclusion on the meridional flow structure in depth, which also raises the interest of estimating the meridional flow with an independent method resting on a dynamo model.

1.2. Solar Prediction and Data Assimilation methods

Because of the irregular nature of the Solar activity discussed above, a wide range of solar prediction methods are developed, from the studies of geomagnetic precur-

sors to extrapolation methods based on time series analysis of the past activity and correlation studies (Hathaway et al. 1999), and to more sophisticated methods using numerical models which simulate the evolution of the system on the basis of the relevant physical equations. Such numerical models require the definition of adequate initial conditions which are obtained through the technique of data assimilation (Petrovay 2010; Dikpati & Gilman 2006; Pesnell 2016). Data assimilation is an emerging technique in solar cycle and activity prediction, which is a way to incorporate observations in numerical models (Brun 2007). Suppose some solar observations are available on a time interval. By controlling the initial condition and key control parameters of a numerical model, the task of a data assimilation method is to obtain a model trajectory which can best account for the observations.

Modern data assimilation techniques can be split into two general classes, sequential and variational. The Kalman filter and Ensemble Kalman Filter (EnKF) are common methods for the sequential class, and make use of observations on the fly, as soon as they are available. For the variational approach, by controlling selected parameters of the physical model, an optimal fit of data is obtained over the entire time window, making use of all the observations available. A common example is 4D-Var, in which the minimization of the objective function can be implemented by the development of an adjoint model (Fournier et al. 2010; Talagrand 2010). The respective merits and drawbacks of the sequential and variational approaches have been discussed at length (see e.g. Fournier et al. (2010), §2.2.3 and references therein). Suffice it to say here that both lead to similar answers (identical in the linear case with Gaussian error statistics) and that a sequential method is generally easier to implement than a variational method (which requires the implementation of the adjoint model). The variational approach is more flexible, and it uses all the observations available over a given time window to define an optimal initial set-up at the beginning of the window. For sequential data assimilation, use of EnKF assimilation in analysis or prediction of solar activity, for example, is illustrated by Kitiashvili & Kosovichev (2008) and Dikpati et al. (2014). On the other hand, the use of variational data assimilation method with solar dynamo models is illustrated by Jouve et al. (2011). In that paper, an $\alpha\Omega$ mean field dynamo model defined on a Cartesian coordinates system is adopted. The corresponding adjoint model is developed, followed by a twin experiment which successfully estimates the spatial dependence of the physical ingredients of the model, such as the profile and strength of the α -effect. Similar developments based on a flux transport dynamo model in axisymmetric spherical coordinates are presented in Hung et al. (2015) (hereafter Paper I) to estimate the steady meridional flow of the model with synthetic magnetic observations, as a first step towards predicting the solar cycle.

In this study, we are going to extend the framework developed in Paper I, by adding the initial conditions to the control vector and estimating a time dependent meridional circulation.

In Paper I, we included the meridional circulation as the main control parameter of our data assimilation pipeline. We verified that the variational assimilation

method is capable of estimating the meridional circulation of the model by minimizing the misfit between synthetic magnetic observations and model trajectory. Again, this study assumed a steady meridional circulation. In reality, the solar cycle is significantly modulated, and the meridional flow is fluctuating (Ulrich 2010; Basu & Antia 2010; Komm et al. 2015), (for more about observations of meridional flow, see Haber et al. 2002a, 2003; Zhao et al. 2004, 2012, 2013a; Švanda et al. 2007, 2008; Schad et al. 2013; Upton & Hathaway 2014), so the next step of development is to verify the applicability of the method to capture the variability of the modulated activity.

Similar studies were performed recently, for example, by Dikpati et al. (2014) and Dikpati et al. (2016). In Dikpati et al. (2014), a numerical experiment was used to reconstruct the time-varying amplitude of the flow, by applying the EnKF to the Babcock-Leighton flux transport dynamo model. In this work, we apply a variational data assimilation method, to reconstruct a time varying meridional circulation, by ingesting synthetic observations produced by a dynamo model with a meridional flow modulated both in amplitude and shape.

We present our work as follows. In Sec. 2, we describe the motivation and methodology of the assimilation framework. In Sec. 3, we present the results of the numerical experiment. We discuss the results of hind-casting in Sec. 3.1. Then we investigate the predictive capability of the assimilation procedure and of the model in Sec. 3.2. Furthermore, we test the robustness of the procedure by inverting the synthetic observations based on a meridional flow with different levels of fluctuations (Sec. 3.3). We summarize and discuss our results in Sec. 4. Along with Paper I, in the Appendix, we describe the Babcock-Leighton mean field dynamo model (Sec. A), and we include some details about the algorithm which incorporates the initial condition in the assimilation procedure (Sec. B). We finally give a brief analysis of the observation of the flow at the surface of the Sun (Sec. C).

2. METHODOLOGY

2.1. Generation of synthetic data based on a dynamo model with a time varying meridional circulation

We presented in Paper I a first step toward predicting future solar activity levels using variational data assimilation. As a proof of concept, we performed twin experiments for which the assimilated data were produced by the flux-transport (Babcock-Leighton) model itself. Details on the model and its numerical implementation can be found in Appendix A. The system is axisymmetric and we express the magnetic field $\mathbf{B}(\mathbf{r}, t)$ as sum of its toroidal and poloidal component, and the latter is further expressed as the curl of a vector potential with the axisymmetric assumption:

$$\mathbf{B}(\mathbf{r}, t) = B_\phi(\mathbf{r}, t)\mathbf{e}_\phi + \nabla \times [A_\phi(\mathbf{r}, t)\mathbf{e}_\phi], \quad (1)$$

where \mathbf{e}_ϕ is the azimuthal unit vector, the first and second term are the toroidal and poloidal component of the magnetic field respectively, and $A_\phi\mathbf{e}_\phi$ is the vector potential of the poloidal field. The model equations are partial differential equations describing the time evolution of A_ϕ and B_ϕ . This model is very similar to the one in

Paper I, except that (i) the meridional flow (defined with ψ) is steady in Paper I but time dependent in this work, and (ii) the diffusion profile is slightly modified here compared with that in Paper I. The axisymmetric meridional circulation is described using a stream function $\psi(\mathbf{r}, t)$, in which \mathbf{r} and t denote position in the meridional plane and time, respectively.

Since the flux-transport model we adopted was based on a constant meridional circulation, the regular and periodic synthetic activity it generated lacked some of the salient features of solar activity, namely its variability in cycle length and amplitude. In fact, the duration of the 23 sunspot cycles since 1749 distribute broadly about 11 ± 3 years.

To be able to account for these important observational facts, we make the meridional flow of our flux-transport model time-dependent, and write the corresponding stream-function $\psi(\mathbf{r}, t)$ as the sum of a constant (background) term $\bar{\psi}(\mathbf{r})$ and a time-dependent term (of zero mean) $\psi'(\mathbf{r}, t)$

$$\psi(\mathbf{r}, t) = \bar{\psi}(\mathbf{r}) + \psi'(\mathbf{r}, t). \quad (2)$$

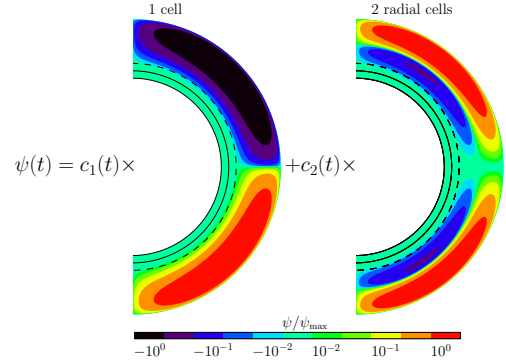


Figure 1. Stream functions of those two components of the meridional circulation used to generate synthetic observations. The left one (ψ_1) is the stream function for unicellular flow, the right one (ψ_2) is the stream function for the equatorially antisymmetric flow. Note that the equatorial parity of the stream function is opposite to that of the corresponding flow.

In this study, $\bar{\psi}$ corresponds to an equatorially antisymmetric, one-cell per hemisphere, constant flow whose maximum surface amplitude is $v_0 = 22.3 \text{ m s}^{-1}$. This flow pattern will be denoted ψ_1 henceforth, and its streamlines are shown in the left panel of Fig. 1. The integration of the model with $\bar{\psi}$ alone leads to a regular activity of period 11.5 years.

The fluctuating part $\psi'(t)$ comprises two components, whose amplitude is time-dependent: the first is ψ_1 and the second (ψ_2 henceforth) corresponds to an equatorially symmetric, two cells per hemisphere (on the meridional plane, one radial node) flow, shown in the right panel of Fig. 1. As indicated in this figure, the total flow is therefore a combination of two components and can be written as

$$\psi(\mathbf{r}, t) = c_1(t) \times \psi_1(\mathbf{r}) + c_2(t) \times \psi_2(\mathbf{r}). \quad (3)$$

We specify the explicit expression of $\psi(\mathbf{r}, t)$ in this case in terms of its expansion on a chosen set of basis functions in Appendix A. The coefficients c_1 and c_2 are constructed

as follows

$$c_1(t) = 1 + A_1 F[\delta_1(t)], \quad (4)$$

$$c_2(t) = A_2 F[\delta_2(t)], \quad (5)$$

in which each $\delta_i(t)$ is a random number (drawn from a uniform distribution) whose amplitude is normalized so that $\delta_i = 1$ implies a maximum surface velocity equal to v_0 .

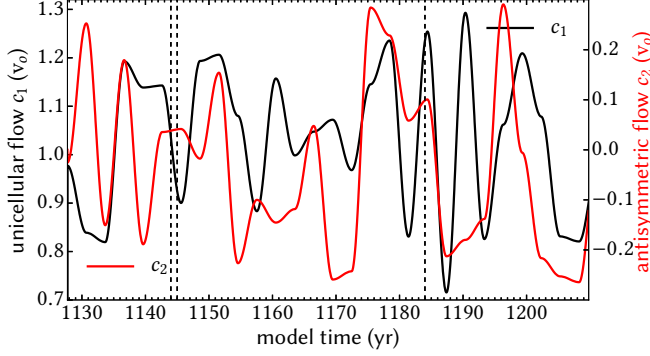


Figure 2. Stream function coefficients c_1 and c_2 adopted in the dynamo model to generate the synthetic data, as a function of time. The coefficients are normalized such that the corresponding maximum surface flow is v_0 . The two vertical broken lines on the left mark a typical one year sampling window of data assimilation, and the leftmost and rightmost broken lines indicate the whole course of 40 year assimilation.

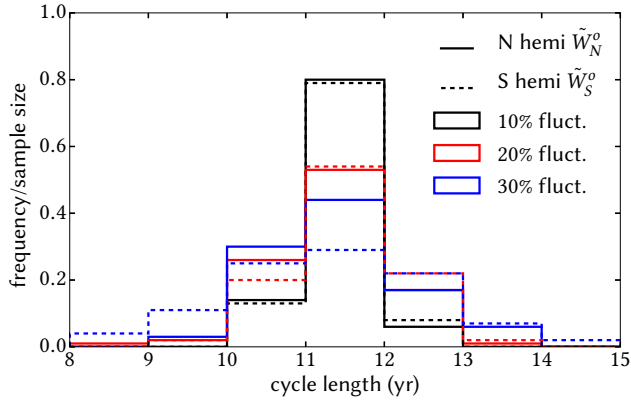


Figure 3. Histograms of cycle length of the dynamo model over 100 (synthetic) sunspot cycles, with 10% (black), 20% (red) and 30% (blue) fluctuation in the meridional flow. Solid (resp. dashed) lines refer to statistics in the Northern (resp. Southern) hemisphere.

Substituting Equations (4) and (5) into (3), we see that in this study, the time independent part $\psi(\mathbf{r})$ is $\psi_1(\mathbf{r})$, and the time dependent part is

$$\psi'(\mathbf{r}, t) = A_1 F[\delta_1(t)] \psi_1(\mathbf{r}) + A_2 F[\delta_2(t)] \psi_2(\mathbf{r}). \quad (6)$$

The width τ_i of the interval between two consecutive values of δ_i is chosen based on the available observational evidence. As shown in Appendix C, a spectral decomposition of the solar surface flow inferred by Ulrich (2010) shows that the equatorially symmetric flows are dominant with respect to their antisymmetric counterparts.

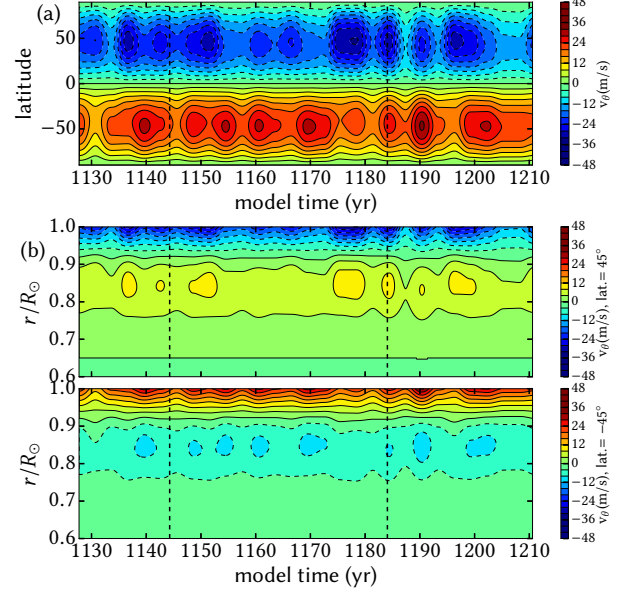


Figure 4. (a) Latitudinal component of the flow at the surface as a function of time, in the case of a fluctuation of the meridional flow characterized by $A_1 = A_2 = 0.3$. (See text for details.) The assimilation period in the numerical experiment which follows is indicated by the dashed vertical lines. The sign convention is positive for a flow due south. (b) Latitudinal component of the flow in time-radius contour plots at latitude 45° (top) and -45° (bottom); same flow setup as in (a).

The auto-correlation times of the amplitudes vary from ~ 1 year for the antisymmetric modes to 3 years and more for the symmetric modes. In this study, for the sake of simplicity, we shall take that time to be 3 years for both families, and consequently set $\tau_1 = \tau_2 = 3$ years.

We next interpolate in time between two consecutive values of δ_i using a sine function and this interpolation is symbolized by the F operator in Equations (4), (5). To explicitly define F , for any nonnegative integer n , suppose random numbers $\delta_{i,n}$, $i = 1, 2$, are generated at $t = n\tau_i$, then

$$F[\delta_i(t)] = \frac{1}{2} \{ \delta_{i,n} + \delta_{i,n+1} + (\delta_{i,n} - \delta_{i,n+1}) \cos[\pi(t/\tau_i - n)] \}, \quad \text{for } n\tau_i \leq t < (n+1)\tau_i. \quad (7)$$

Figure 2 shows an example of realization of (c_1, c_2) , for which the chosen level of fluctuation amounts to 30% of the mean flow (in other words, $A_1 = A_2 = 0.3$ and the maximum surface velocity that can originate from ψ_2 alone is 7 ms^{-1} , and the maximum total fluctuation at the surface (from $\psi'(\mathbf{r}, t)$) can reach $\sim 14 \text{ ms}^{-1}$).

The level of fluctuation in ψ' controls the amount of variability in the simulation, which can be assessed statistically.

We show the histograms of cycle duration of the model for different fluctuation levels A_1 (A_2) in Figure 3, namely 10, 20, and 30%. The cycle length is defined by the time between two consecutive minima of the modeled magnetic proxy which will be defined shortly after [Equation (8) and (9)]. Each corresponding model has been integrated for a long enough time to enable 100 cycles to be achieved. The statistics shown here are separated into their Northern and Southern contributions. For a per-

turbation of flow speed of 30%, the cycle length varies from ~ 9 to ~ 14 years, which is in reasonable agreement with observations based on the available records of the 23 cycles at our disposal.

Unless otherwise stated, we will use this fluctuation level of 30% in the remainder of this study. An example of realization of the meridional flow is shown in Fig. 4 for the θ component of the flow, given the c_1 and c_2 already displayed in Fig. 2. The meridional flow is dominated by unicellular structure in each hemisphere, with equatorial asymmetric fluctuations. This meridional circulation is chosen for our numerical tests in this work, as unicellular structure is observed mostly (Ulrich 2010; Basu & Antia 2010), though helioseismological studies suggest the presence of counter cells in the convection zone (Haber et al. 2002a; Zhao et al. 2013b; Schad et al. 2013). In particular, we present the surface flow in Fig. 4 (a), and note again that similar time variability is also reported in the Sun (eg., Ulrich & Boyden 2005; Komm et al. 2015).

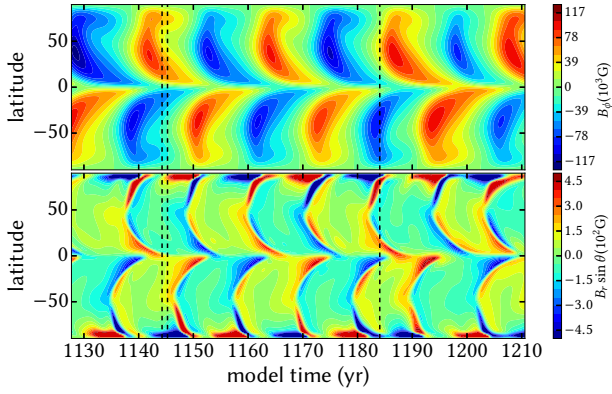


Figure 5. Top: time-latitude representation of the toroidal field at the tachocline. Bottom: time-latitude evolution of the magnetic field in the line of sight at the surface.

The plots show the asymmetry of the flow about the equator. The corresponding simulated magnetic field is shown in Fig. 5, which shows the advection of the toroidal field toward the equator at the base of the convection zone, and the polar branch at the surface shows the radial field is advected polewards.

Since the model does not produce sunspots per se, we introduce a proxy for the total sunspot number, in the form of a pseudo-Wolf number \tilde{W}^o defined by

$$\tilde{W}^o(t) = \left[\int_{\theta=0}^{\theta=\pi} \int_{r=0.70}^{r=0.71} B_{\phi}^o(r, \theta, t) r^2 \sin \theta \, dr d\theta \right]^2, \quad (8)$$

where the superscript o denotes observations, and the radial coordinate r is normalized with the solar radius R_{\odot} . We further decompose \tilde{W}^o into its North and South components

$$\tilde{W}^o(t) = \tilde{W}_N^o(t) + \tilde{W}_S^o(t), \quad (9)$$

in which the North (resp. South) component \tilde{W}_N^o (resp. \tilde{W}_S^o) is computed by restricting the integration in Eq. 8 to the Northern (resp. Southern) hemisphere. In radius, the integral is restricted to a thin layer (between $0.70R_{\odot}$

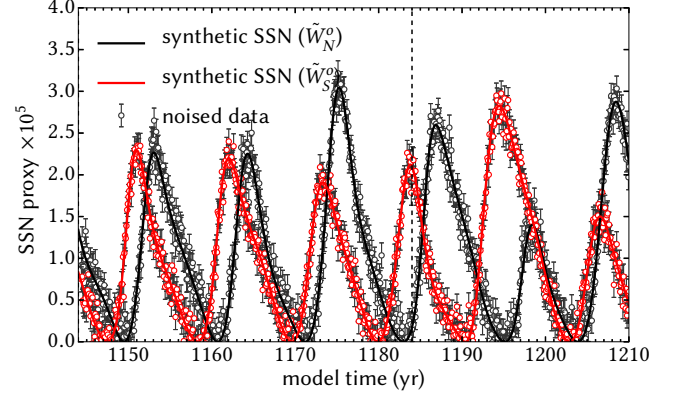


Figure 6. Time series of the synthetic sunspot number in the Northern (resp. Southern) hemisphere shown in black (resp. red). Circles represent the monthly data extracted from these reference time series and used for the assimilation. A 10% random error has been added to the reference values to generate this data.

and $0.71R_{\odot}$) where toroidal flux tubes are thought to originate. The corresponding pseudo-Wolf numbers are shown in Fig. 6. As the flow applied is equatorially asymmetric, so do the corresponding magnetic proxies. Furthermore, there is a clear phase difference between $\tilde{W}_N^o(t)$ and $\tilde{W}_S^o(t)$, which suggests symmetric and anti-symmetric dynamo modes as well (DeRosa et al. 2012). In these figures, note that the y -axis and rightmost dotted lines represent the edges of the 40-year time window over which we will conduct our assimilation experiments.

Synthetic (and noised) time series of $\tilde{W}_N^o(t)$ and $\tilde{W}_S^o(t)$ will constitute one kind of synthetic observations used in our assimilation experiments. The other class of data will consist of synthetic (and noised) maps of the line-of-sight component of the magnetic field at the model surface, B_{los}^o , defined as

$$\begin{aligned} B_{los}^o(\theta, t) &= B_r^o(r=1, \theta, t) \sin \theta \\ &= \mathbf{e}_r \cdot \nabla \times (A_{\phi} \mathbf{e}_{\phi}) \\ &= (\cos \theta + \sin \theta \partial_{\theta}) A_{\phi}^o(r=1, \theta, t). \end{aligned} \quad (10)$$

The level of noise should be consistent with that of the observations of the Sun. We estimate the noise of the surface magnetic field from the ratio of its coefficient of monopole to the coefficient of dipole component of the observed field (the former, theoretically, should be zero for noise free situation). The data is available at WSO, and the ratio is $\sim 10\%$.

For the modeled sunspot number proxy \tilde{W}_N, \tilde{W}_S , we refer to real sunspot number data, the average uncertainty of the data is about 10% of the root mean square of the whole time series (estimated from sunspot series provided by Solar Influences Data Analysis Center (SIDC)). Therefore, we add 10% noise (with respect to the root mean square of the observables) to the synthetic data B_{los}^o and $\tilde{W}_N^o, \tilde{W}_S^o$ for our numerical experiment. Note that this 10% added noise differs from the stochastic forcing A_i of the meridional flow, it comes in addition to the fluctuating time series.

2.2. Assimilation setting

In this section we describe the data assimilation procedure that we have developed to minimize the misfit between synthetic observations and magnetic trajectory

ries of the dynamo model, by estimating the meridional circulation and the initial conditions which give an optimal fit to the data. We also present some technical details in Appendix B. The meridional circulation depends on time, and from a study of the observed surface flow (Ulrich 2010; Basu & Antia 2010; Komm et al. 2015) the temporal variability is of the order of one year. Therefore we use an assimilation window of width one year, and we will assimilate data for 40 consecutive years. We should stress at this stage that within this one-year window, the flow is steady. It can vary from one window to the next, if data demand it; the flow is therefore mathematically speaking piecewise constant, over intervals of constant width one year. We choose a course of 40 years because in the future we intend to apply our method to invert the magnetic field on the solar surface, using the systematic, daily observations the field on the solar disk from WSO (which are digitalized and available from 1975 onward).

We include the initial magnetic field of the model in the control parameters; this is a new property of our method compared to Hung et al. (2015) (Paper I). In Paper I, the initial condition was approximated by the magnetic configuration of a dynamo field produced by a model with a steady flow. This approximation gets worse when the field is based on a time-varying flow, to the point where it precludes the success of the assimilation. The assimilation model relies on solving the flux transport model as an initial value problem, so we need a better control of the initial conditions. As a result, we add it to the control vector together with the flow. We then express schematically the control vector \mathbf{x} as:

$$\mathbf{x}_n = (x_{n,IC}, x_{n,MC})^T. \quad (11)$$

Here subscript $1 \leq n \leq 40$ denotes the step of the assimilation window. The component $x_{n,IC}$ represents the initial conditions in the parameter space, and $x_{n,MC}$ is the meridional circulation, which is represented by c_1 and c_2 . For our current study there will be 2 coefficients representing 2 different structures of flow. For the initial condition state vector $x_{n,IC}$, we will discuss below that we restrict its dimension to $m = 20$, and further justify the consistency between this choice and the results in Appendix B.

The initial conditions for the assimilation model $A_\phi(r, \theta, t_s)$ and $B_\phi(r, \theta, t_s)$, where t_s is the beginning of the assimilation window, are defined on the grid of $n_r \times n_\theta = 129 \times 129$ points. However, if we represent the initial condition pointwise in the parameter space, the number of parameters ($2n_r n_\theta \sim 32000$) will be too large compared to the number of observations, which results in over-fitting. For the latter, let N_t° , N_θ° be the number of sampling in time and latitude respectively, and the total number of observations $N^\circ = N_\theta^\circ N_t^\circ + 2N_t^\circ$. (The second term on the right hand side corresponds to \tilde{W}_N° and \tilde{W}_S° (if they are included as observations).) At the same grid size, an assimilation window of 1 year (sampled on a monthly basis, i.e. $N_t^\circ = 12$) of the surface magnetic field (spatial sampling in every latitudinal grid point except the poles $N_\theta^\circ = 127$) only gives $N^\circ \sim 1500$. To stay realistic we do not want an artificially fine sampling in time which of course can give a higher N° . In practice, sampling frequency of the real magnetic field is, for example, daily in WSO down to 45 s cadence with HMI

onboard SDO satellites (Schou et al. 2012). Latitudinal resolution on real data also depends on the instrument used.

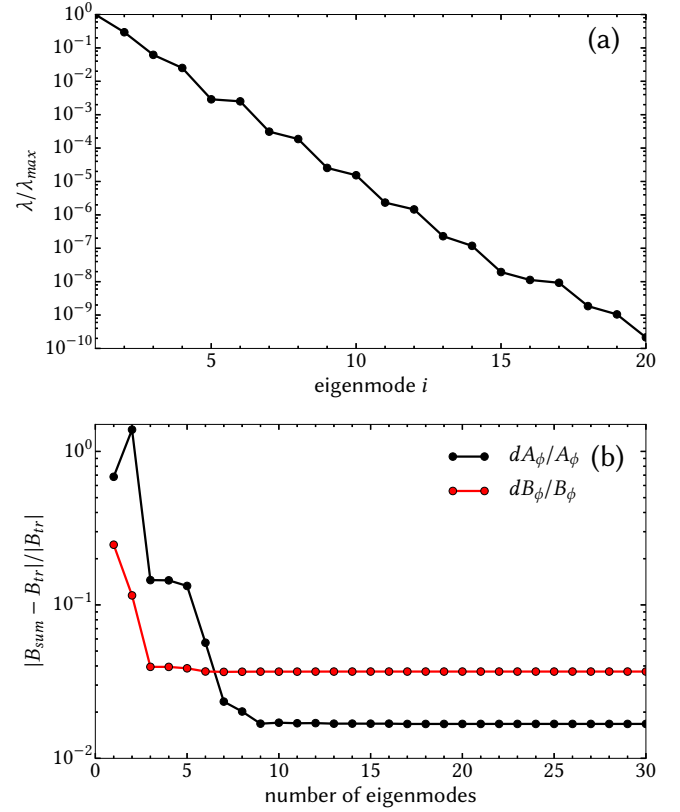


Figure 7. (a) Eigenvalue spectrum of the covariance matrix of the dynamo field for a steady unicellular flow. The eigenvalues λ are normalized with the greatest eigenvalue λ_{max} in the plot. (b) Error in the approximation of the magnetic field of the same dynamo field at a particular time $t_o = 2.91(R_\odot^2/\eta_t)$ as a function of the size of a truncated eigenbasis. Black: error in the poloidal field. Red: error in the toroidal field.

For instance, the maximum spherical harmonic degree ℓ_{max} , is 60 for WSO maps and about 190 for MDI (note that HMI has 16 times the resolution of MDI) (Scherer et al. 1995). Therefore, we choose to represent the magnetic field on the meridional plane with a truncated set of basis functions rather than pointwise. This comes down to constructing the covariance matrix of the dynamo magnetic field \mathbf{P} , to account for the magnetic variability of the Sun. We define and discuss the construction of such a covariance matrix \mathbf{P} in detail in Appendix B. We can then describe our initial magnetic state by retaining only the most prominent eigenvectors of \mathbf{P} as a basis.

Fig. 7 shows the eigenvalue spectrum λ and the approximation of the magnetic field driven by a simple unicellular meridional flow, with the eigenbasis of its own covariance matrix. We define the error of approximating the field as

$$dX/X = \sqrt{\int_D (X_{approx} - X_{true})^2 da} / \sqrt{\int_D X_{true}^2 da}, \quad (12)$$

where $da \sim r dr d\theta$, X is A_ϕ or B_ϕ , dX/X is the error

in approximating $A_{\phi,true}$ or $B_{\phi,true}$ with $A_{\phi,approx}$ or $B_{\phi,approx}$, respectively. The domain of integration D is the meridional plane.

We can see that we get a good approximation with only $m = 20$ basis functions (Fig. 7 (b)), so we will limit the number of parameters for the initial condition at $m = 20$ under this representation. We also update the covariance matrix \mathbf{P}_n with the most recent forecast at the end of each year n . The dimension of $\mathbf{x}_{n,IC}$ is 20, together with the 2 parameters in $\mathbf{x}_{n,MC}$, the dimension of the parameter space is 22, well below $N^o = 1500$.

For the first year of the assimilation window, the initial guess for the initial condition ($\mathbf{x}_{1,IC}^g$) and meridional flow ($\mathbf{x}_{1,MC}^g$) comes from a dynamo model based on a unicellular flow with a magnetic cycle of 22 years (superscript g stands for guess). Then, for the subsequent data assimilations, the initial guess will be the forecast magnetic field and velocity at the end of the previous assimilation. The former is obtained by evolving the dynamo model for one year with $\mathbf{x}_{n-1,IC}^f$, and $\mathbf{x}_{n-1,MC}^f$ (with superscript f stands for forecast), the latter is simply $\mathbf{x}_{n-1,MC}^f$. Within each 1 year window, we estimate the coefficients of the stream function and initial condition which give minimal misfit, and consequently we obtain an estimate of the time variation of the flow profile in Fig. 2 by approximating it with a piecewise constant function.

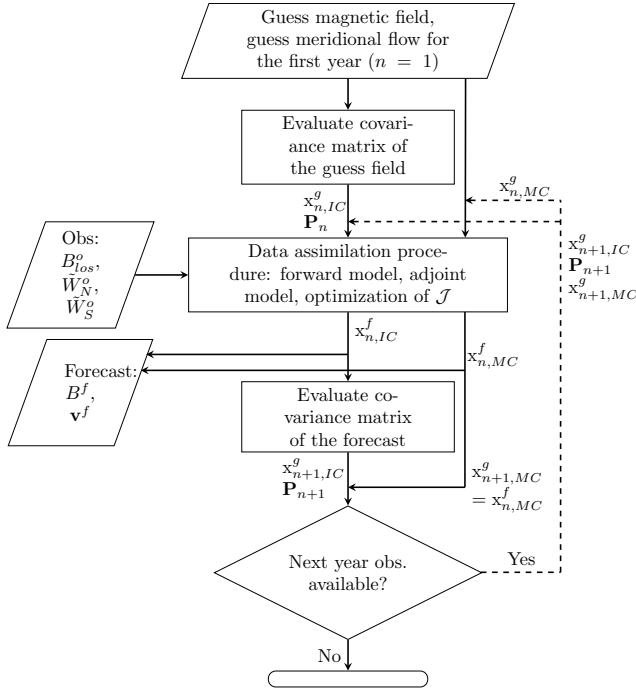


Figure 8. A schematic diagram illustrating the data assimilation procedure used in this study. Integer subscripts refer to discrete time indices.

A schematic view of the procedure is shown in Fig. 8. We start from a guess state representing a dynamo model based on unicellular meridional circulation $\mathbf{x}_{1,IC}^g, \mathbf{x}_{1,MC}^g$, and with the input of magnetic observations of the first year, we get the forecast state $\mathbf{x}_{1,IC}^f, \mathbf{x}_{1,MC}^f$ from the assimilation procedure. Based on the forecast state we can

evaluate the initial guess state $\mathbf{x}_{2,IC}^g, \mathbf{x}_{2,MC}^g$ of the second year, and we repeat the assimilation procedure when new observations are available.

Note that the covariance matrix is evaluated and therefore modified after each year, so that the projection on the corresponding truncated eigenbasis gives a good approximation of the initial condition in each assimilation.

2.3. Data and objective function

We aim to minimize an objective function defined in term of the differences between the observations and the model trajectory,

$$\mathcal{J} = \sum_{\alpha} \sum_{i=1}^{N_{\alpha,t}^o} \sum_{j=1}^{N_{\alpha,\theta}^o} \frac{[y_{\alpha}(\theta_j, t_i) - y_{\alpha}^o(\theta_j, t_i)]^2}{\sigma_{\alpha}^2(\theta_j, t_i)}, \quad (13)$$

where α denotes the type of magnetic proxy y to be compared. The proxies with the superscript o stand for observations, and without superscript for the forecast values, and σ_{α} stands for the uncertainty of the measurement. For each type α we sum the observations over the observation times and latitudes, $N_{\alpha,t}^o$ and $N_{\alpha,\theta}^o$, respectively. Recall that \mathcal{J} is defined over an interval of total duration 1 year.

As mentioned above, the synthetic observations used for the experiment are the magnetic sunspot proxy (Equation (8)) and the surface line of sight magnetic field B_{los}^o (Equation (10)). Historically, sunspot series given in Wolf number started from 1749, and daily, continuous and digitalized observations of the surface magnetic field of the Sun have become available later. Therefore, we first look for the possibility to estimate the (synthetic) time varying flow with the assimilation procedure by ingesting the modeled synthetic sunspot proxy (Equation (8)) as the only observable. This is to investigate the feasibility of estimating the meridional circulation of the Sun since 1749. However, this would be more difficult as SSN is only one value (two for hemispheric SSN) at a particular observation time, instead of a latitude map provided by B_{los}^o . We first make this relatively more challenging attempt of assimilating the synthetic hemispheric sunspot proxy only, with an assimilation window of 1 year, with various sampling frequencies, from monthly to every 6 days. We find that in these attempts, the estimate of flow in the first year assimilation is not physical, as the surface flow is found to be 20 times higher than the truth. This gives an unstable dynamo model for further assimilation after the first year, making the algorithm unstable. This is because the information contained in the data is not rich enough to estimate the meridional circulation as well as the initial magnetic field within the assimilation window concerned. Moreover, with the sunspot number alone, there is a sign ambiguity for the magnetic field. Furthermore, we showed in Paper I that compared with temporal dependence in observations, latitudinal dependence is more important for the estimation of internal dynamics.

To proceed, we can add more information to the pipeline. For example, we can add constraints to the optimization procedure based on physical knowledge as a background term in the objective function, which does not need more observations. Or we can add more observations within the assimilation window. In this study, we

are going to include the characteristics of the butterfly diagram in the observations. As a result, we introduce more observations with spatial data distribution, in order to help the minimization of the objective function. A more effective objective function to be minimized can then be:

$$\mathcal{J} = \sum_{i=1}^{N_t^o} \left\{ \sum_{j=1}^{N_\theta^o} \frac{[B_{los}(\theta_j, t_i) - B_{los}^o(\theta_j, t_i)]^2}{\sigma_{B_{los}}^2(\theta_j)} + \frac{[\tilde{W}_N(t_i) - \tilde{W}_N^o(t_i)]^2}{\sigma_{\tilde{W}_N}^2} + \frac{[\tilde{W}_S(t_i) - \tilde{W}_S^o(t_i)]^2}{\sigma_{\tilde{W}_S}^2} \right\}, \quad (14)$$

where $\sigma_{B_{los}}$, $\sigma_{\tilde{W}_N}$, and $\sigma_{\tilde{W}_S}$ in this study are fractions of the root mean squares of the line of sight surface field, synthetic sunspot number proxy in the Northern and Southern hemispheres, respectively, in order to model the uncertainties of the data, i.e. $\sigma_\alpha(\theta_j) = \epsilon_\alpha \sqrt{\langle y_\alpha^o(\theta_j)^2 \rangle_t}$, where ϵ_α is the level of noise of the species α , and $\langle \cdot \rangle_t$ is averaging over time. As stated in Sec. 2.1, the noise levels added to B_{los}^o and $\tilde{W}_N^o, \tilde{W}_S^o$ for our numerical experiment are of order 10%.

The total number of observations is $N^o = (N_\theta^o + 2)N_t^o$. In our case, within an assimilation window of 1 year, sampling monthly ($N_t^o = 12$), and uniformly in latitude ($N_\theta^o = 127$), we have $N^o = 1548$. (Here we also tested that for a coarse sampling in latitude, say $N_\theta^o = 63$, we can get similar results and performance. For a systematic study of the effect of latitude sampling on the assimilation procedure, see Hung et al. 2015) (Paper I).

The normalized misfit, is defined as

$$\mathcal{J}_{norm} = \sqrt{\sum_{\alpha} \frac{\mathcal{J}_{\alpha}}{N_{\alpha}^o}}. \quad (15)$$

An optimal fit gives $\mathcal{J}_{norm} \sim 1$, while $\mathcal{J}_{norm} \gg 1$ indicates the misfit is too large considering the noise added to the synthetic observations, and $\mathcal{J}_{norm} \ll 1$ implies statistical overfitting.

3. RESULTS OF ASSIMILATION PIPELINE

In this section we demonstrate that by assimilating, in a sequence of windows of width 1 year, the synthetic observations displayed in Fig. 5 and 6, we are able to estimate the meridional flow shown in Fig. 2. We illustrate the data of 40 years under study and the first year of data for assimilation in Fig. 5 with broken dashed lines. We start the assimilation with a unicellular flow as an initial guess for the meridional circulation. For the initial condition on the magnetic field components A_ϕ and B_ϕ for the first year of the assimilation, we conduct 2 trials with 2 different guesses. The first guess is a dynamo field based on a unicellular flow ($c_1 = 1$, $c_2 = 0$ in Equation (3)), where the fields have a definite parity about the equator, i.e., symmetric for A_ϕ and antisymmetric for B_ϕ . The second guess is a dynamo field based on a unicellular flow but slightly modified with an anti-symmetric flow which contributes to 1% of the v_o (of the background flow at the surface). The flow is then slightly asymmetric and so does the corresponding dynamo field. The motivation behind the second trial is an attempt to account for the equatorially asymmetric nature of the

synthetic observations in Fig. 5 and 6. We discuss separately the hind-cast of the data assimilation for 40 years, and the ability of the model to forecast beyond the 40th year. For the latter, we estimate the magnetic field 25 years after the latest assimilation, making a total study of 65 years. For clarity and convenience in discussion, in the following, in our figures where a time evolution is shown, $t = 0$ corresponds to the time at which we start to ingest observations, i.e., $t = 0$ at the left broken vertical line in Fig. 5, at (model time) year 1144 of the synthetic observations.

In the following, the term *dynamical trajectory* refers to the time series of the magnetic field in the computational domain, as predicted by the numerical dynamo model. The *true*, or *reference* trajectory is the one obtained using the combination of control parameters, initial condition and time-dependent meridional flow used to generate the synthetic data. This *reference* trajectory serves as a gauge to evaluate the quality of the *assimilated* trajectory. The assimilated trajectory has an initial magnetic field vector, and an initial meridional flow which are not those of the reference trajectory, and the goal of the assimilation is precisely to have this trajectory get closer to the true trajectory. In contrast, the term *free run* refers to the trajectory obtained, starting from this wrong initial set-up, without assimilating any data.

3.1. Hindcast by assimilation of the synthetic data

In this section we discuss the results of the reconstructed meridional circulation, the misfit of data and the estimate of magnetic field when data is available. This is possible, as under the basis of numerical experiment, the flow driving the dynamo and resulting magnetic field on the meridional plane are known.

3.1.1. Reconstruction of the time varying flow and minimization of data misfit

We show the estimated coefficients of the stream function in Fig. 9. By inverting the data, the estimated profiles capture the temporal variation of the stream function reasonably, except at the beginning.

With a unicellular prior for the flow, the difference between the estimate and the truth is obvious for the first few years. The synthetic observations are asymmetric about the equator as they are based on an equatorially asymmetric true flow. The prior for the flow in the first year is symmetric so does the corresponding dynamo field, the covariance matrix and eigenbasis of the guess dynamo model. Therefore, such a prior cannot take the asymmetry of the observations into account at the onset of the data assimilation. As the model in the assimilation technique involves solving an initial value problem where the initial conditions are important, the estimation of the meridional flow is inaccurate. However, in data assimilation of subsequent years, the estimated flow starts capturing the asymmetry, so does the forecast dynamo field. The corresponding updated covariance matrix gives an eigenbasis which can account for asymmetric configuration. This shows the ability of the method to adjust the model to give a better approximation to the reality. As a result, the estimation of the flow improves starting as soon as the second year. In Fig. 10, we plot the

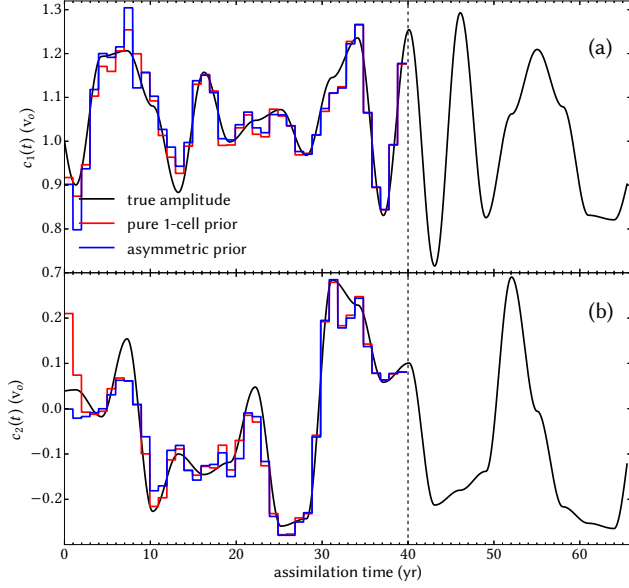


Figure 9. (a) Time series of the coefficient of the unicellular component of the stream function. The reference time series is shown in black. The piecewise constant red (resp. blue) curve is the end result of the assimilation of synthetic observations starting from a unicellular (resp. asymmetric) prior information. (b) Same for the coefficient of the antisymmetric component of the stream function.

stream functions corresponding to the estimated coefficients (Fig. 9), and (10 times) the differences between the estimate and the truth in some selected years. It clearly shows that the error in the estimate of the flow decreases at the beginning.

In the trial with a prior based on slightly equatorially asymmetric flow, as early as the first year, the covariance matrix is able to account for the asymmetry of the observations partially. Therefore, the estimation of the flow in the first year is better than that obtained using a prior based on pure unicellular flow. We can also identify such behavior when evaluating the misfit of the synthetic observations in Fig. 11. Depending on the assumed prior in the first year, the normalized misfit is considerably higher than unity for the first 5 to 10 years. It converges towards unity after ~ 10 years, and remains in very good agreement afterwards. Also, irrespective of the first year assumed prior, the flow reconstructed and the misfit converge to the same value respectively after about 5 \sim 10 years of warm-up time.

The implication here is that the outcome of the assimilation in the first few years depends highly on initial guess of the initial conditions in the first data assimilation window in this implementation.

Next, we show in Fig. 12 the distribution of the misfit of the surface line of sight magnetic field as a function of latitude. As the artificial noise added to generate the synthetic observations is normally distributed, theoretically, for optimal fitting, 68% and 95% of the sampled misfit should fall within once and twice of the noise level, respectively. The plot shows such a consistency.

The statistics of the initial guess of the dynamo field determine the basis of representation of the initial conditions in the control parameter space. An initial guess closer to the truth gives a more complete representation and vice versa. This can be improved after assimilation

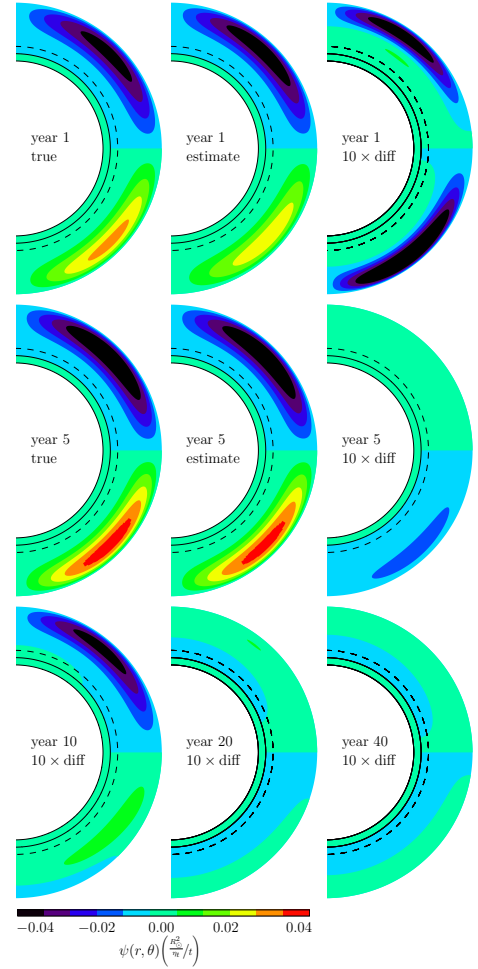


Figure 10. The true and estimated stream functions at different epochs during the assimilation experiment. Also shown at various epochs is 10 times their differences (estimate-truth).

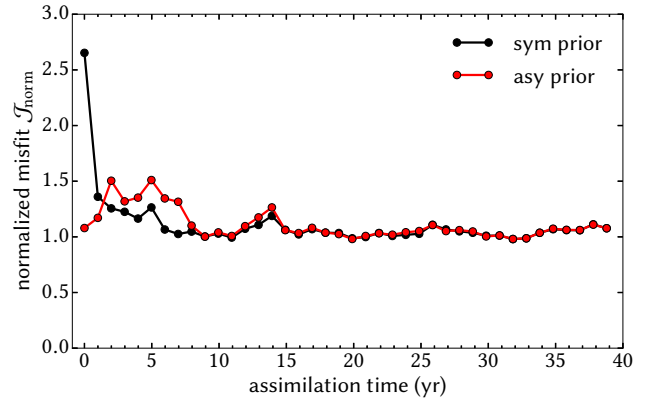


Figure 11. Time series of the normalized misfit over the course of the assimilation, starting either from a unicellular prior (black) or from an asymmetric prior (red). See text for details.

in subsequent years. Therefore, there is a spin-up time for the assimilation procedure to adapt to the truth, but it is reasonably short compared to the interval over which data are available.

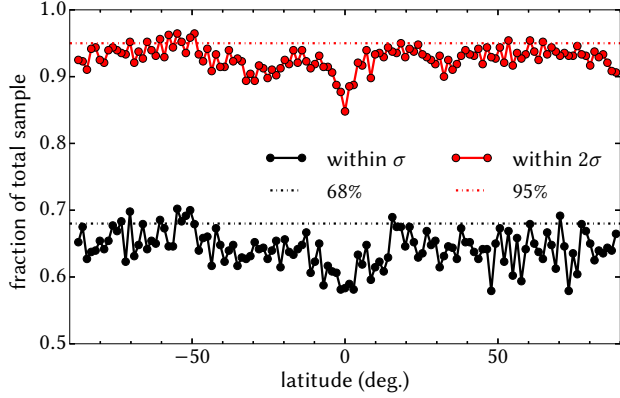


Figure 12. The distribution of the misfit of sampled surface line of sight magnetic field in 40 years of assimilation, at different latitudes. Black (resp. red) curve: Fraction of estimated surface line of sight magnetic field fall within one standard deviation (resp. two standard deviations) from the synthetic observations.

3.1.2. Estimation of the magnetic field and proxies

With the estimate of the parameters $\{\mathbf{x}_n^f\}_{1 \leq n \leq 40}$ (flow, initial condition) from the assimilation procedure, we can reconstruct the magnetic field and the magnetic proxy (Equation (8)) within the 40 consecutive years. We compute the estimated magnetic field A_ϕ and B_ϕ , and compare with the true magnetic field, on the meridional plane (Fig. 13). We measure the (relative) error with Equation (12). We show the difference in Fig. 14. The initial guess is based on a unicellular flow. After the first 5 years of assimilation to capture a dynamo model closer to the truth, the relative errors in the estimated field (inside the 40 consecutive years of assimilation windows) stay within 10% from the truth. This is about the same or slightly more than that of the representation of the magnetic configuration introduced in Sec. 2.2 (Fig. 7 (b)).

Since the initial magnetic field is in the control parameter space in this assimilation procedure, we also show the estimate of the magnetic field on the meridional plane at the first and 10th year, the truth and (10 times) their differences, in Fig. 13. This also shows that the procedure cannot pick up the asymmetry of the field on the first year when the prior is based on a unicellular flow, but the asymmetry can be recovered as assimilation time evolves (as shown in year 10).

It is believed that the sunspot number is closely related to the toroidal field in the tachocline (Parker 1993; Charbonneau & MacGregor 1997; Dikpati & Charbonneau 1999; Choudhuri et al. 1995), so it is important to study the effect of data assimilation with the modeled Wolf number \tilde{W}_N^o , \tilde{W}_S^o on the reconstruction of the magnetic field. We compare our reference case with the case where only the surface magnetic field is used as observations in Fig. 15. We also present a free run of a 22-year dynamo model, based on a unicellular meridional flow, and evaluate the difference from our reference model in the same figure for comparison. The free run is the situation when there is no data assimilation. In the presence of the synthetic sunspot-like proxy as observations, there is only tiny improvement in the estimated toroidal field, while the estimated poloidal field is more or less the same. This is consistent to the case we showed earlier,

that \tilde{W}_N^o and \tilde{W}_S^o alone do not give enough information for a reasonable estimate of the state vector. The spatial dependence of the observation is important, and such a dependence of the proxy is lost for \tilde{W}_N^o and \tilde{W}_S^o as it is defined as an integration over latitudes. Of course as discussed earlier there are ways to improve the data assimilation algorithm based on SSN data only. Beyond the 40-year interval of analysis, the error increases when no data is available.

Notice there are 2 subtle features about the error in the estimate. (i) The tiny and discontinuous rises in error at the beginning of the yearly assimilation windows shown in Fig. 14 are due to an update of the truncated eigenbasis of the covariance matrix for each year of assimilation, which are also within a few % of the true field.

(ii) The errors in Fig. 14 show a nearly periodic rise and fall for every sunspot cycle. As this is an evaluation of the relatively error of the dynamo field, and the dynamo field possesses a modulation of cycle ~ 11 years (or magnetic cycle of ~ 22 years), the relative error can be large if the dynamo field is small. We show the absolute error of the estimate in Fig. 15, in which there is no such periodicity in the error. (However, Fig. 14 illustrates the size of the error compared with the value of the field, which is not illustrated in Fig. 15). In Fig. 15 we compare the error with the difference between the true trajectory and that of a free dynamo run with a simple unicellular flow, without assimilation. Compared with the free run, the error decreases in the first 5 years, and then the estimated field stays close to the true field until the end of the 40 years series. We clearly see the advantage of assimilating data.

Furthermore, we show the fitting of surface magnetic field at latitude $\pm 20^\circ$, in Fig. 16. We also show the free run trajectory based on a unicellular flow as reference. The synthetic observations are based on an equatorially asymmetric flow, so the observations are asymmetric about the equator. As a result, we clearly see that the free run quickly goes out of track. We also note that the free run trajectory based on the symmetric unicellular flow only fits the observations reasonably in one hemisphere but not in the other (in this case it gets close to the data in the Northern hemisphere.) With the assimilation procedure, taking into account the monthly observations each year, the estimated surface magnetic field reconstructed from the forecast flow, gives a smaller misfit in both hemispheres, and clearly the asymmetry is accounted for. During the first few years, the misfit is slightly higher than later years, as the prior is unicellular flow, it takes time for the procedure to adapt to the asymmetry. Similar results are also observed for the reconstruction of the modeled hemispheric sunspot proxy \tilde{W}_N^o and \tilde{W}_S^o , defined from the estimated toroidal field at the tachocline, in Fig. 17.

So we can conclude that our method is robust and able to reconstruct complex, possibly asymmetric internal flows from observations of surface magnetic field, and yields good agreement with activity in both hemispheres. We can now test how well it performs for forecasting.

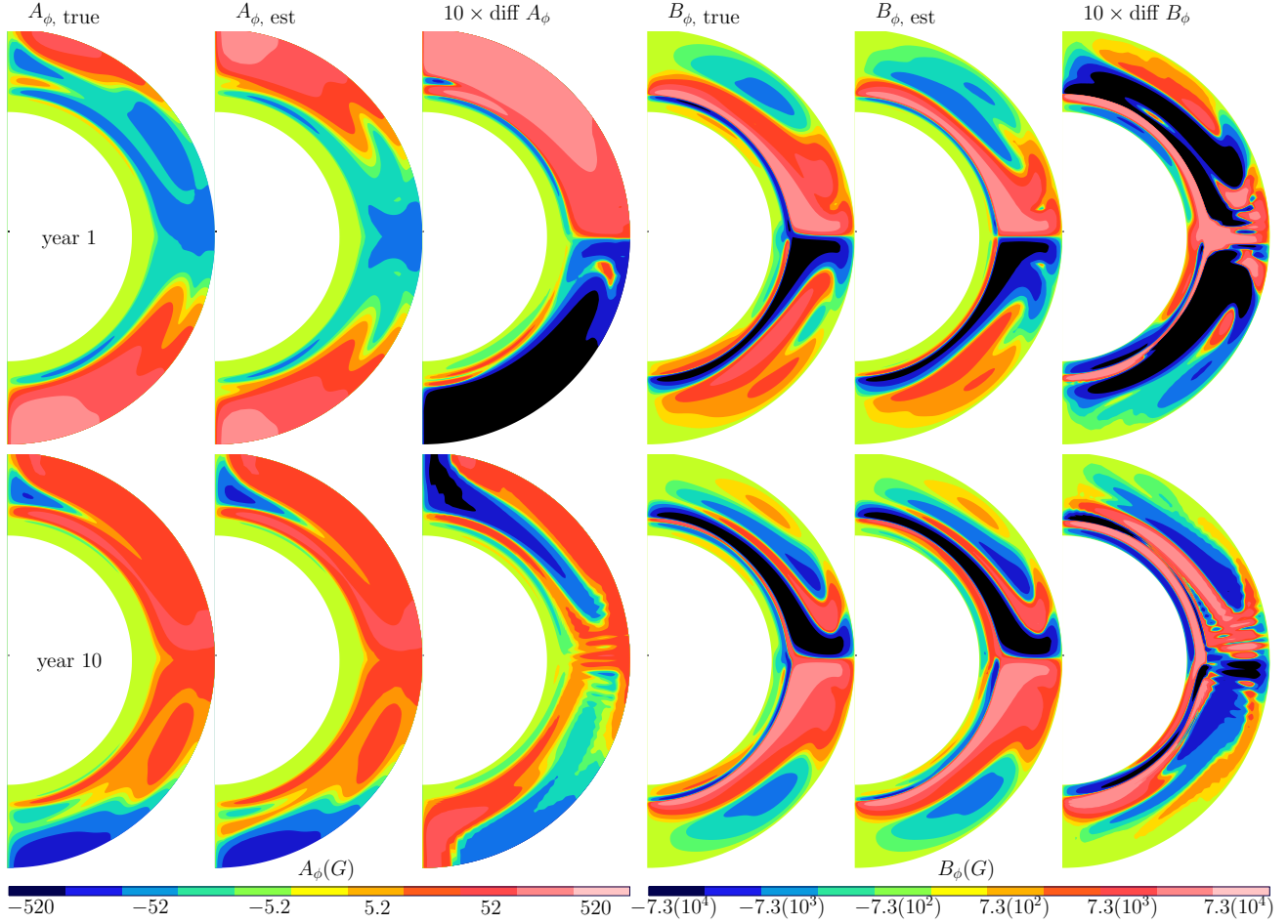


Figure 13. Top: meridional plots of the magnetic field at year 1 of the assimilation experiment. From left to right: True poloidal field, estimated poloidal field after assimilation, ten times the differences of these two, true toroidal field, estimated toroidal field after assimilation, and ten times the differences of these two. Bottom: same for year 10 of the assimilation.

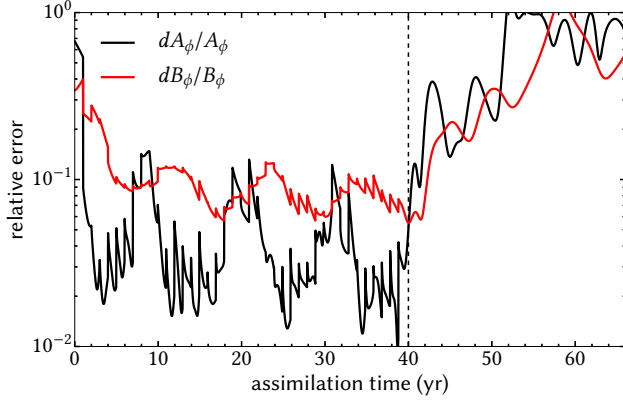


Figure 14. Relative difference between the magnetic field estimated by data assimilation and the true magnetic field versus time, shown in black (resp. red) for the poloidal (resp. toroidal) field.

3.2. Forecast of the magnetic field and proxies beyond the assimilation window

In this section we discuss the predictive capability of the procedure based on this flux transport model. We estimate the magnetic field beyond the 40 years of assimilation, i.e., without assimilation, by evolving the dynamo model in time, based on the forecast magnetic field and the flow at the end of the 40th year.

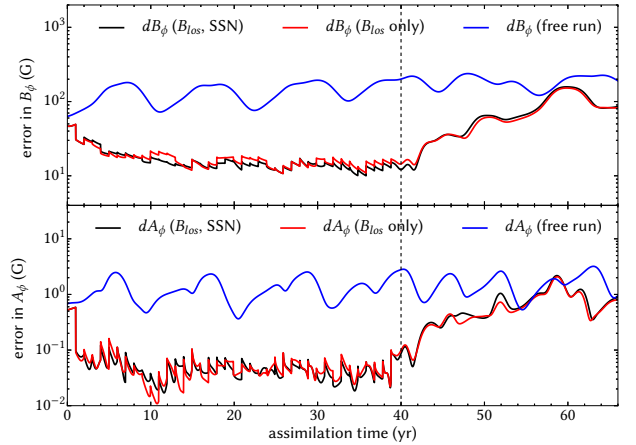


Figure 15. Top: Absolute difference between various estimates of the toroidal magnetic field and the true magnetic field versus time. Blue: free run of the dynamo model (unconstrained by data). Black: data assimilation estimate, with data consisting of magnetic fields in line of sight and pseudo sunspot number. Red: data assimilation estimate, with data restricted to magnetic fields in line of sight. Bottom: Same for the poloidal magnetic field.

We show in Fig. 15 the difference between the true field and the field obtained from the model beyond 40 years of

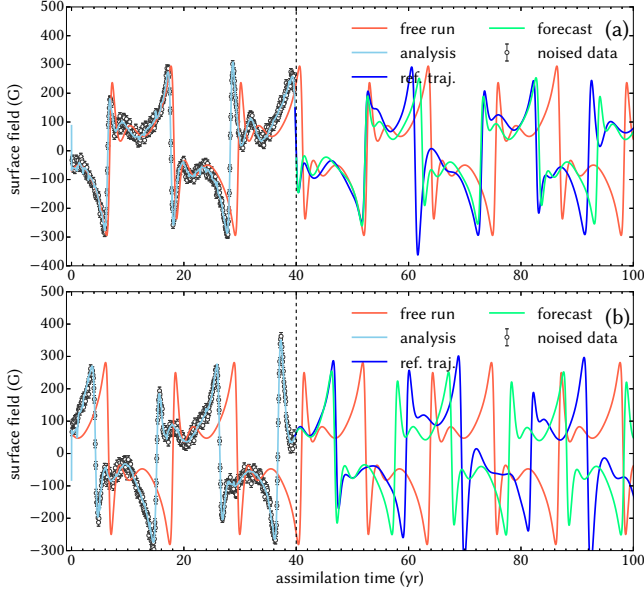


Figure 16. Time series of surface magnetic field in line of sight at latitude 20° . Red: free run of the dynamo model (unconstrained by data). Circles: monthly data extracted from the reference time series. Blue: reference time series. Light blue: data assimilation estimate. Green: time series of the forecast. (b) Same for the field at latitude -20° .

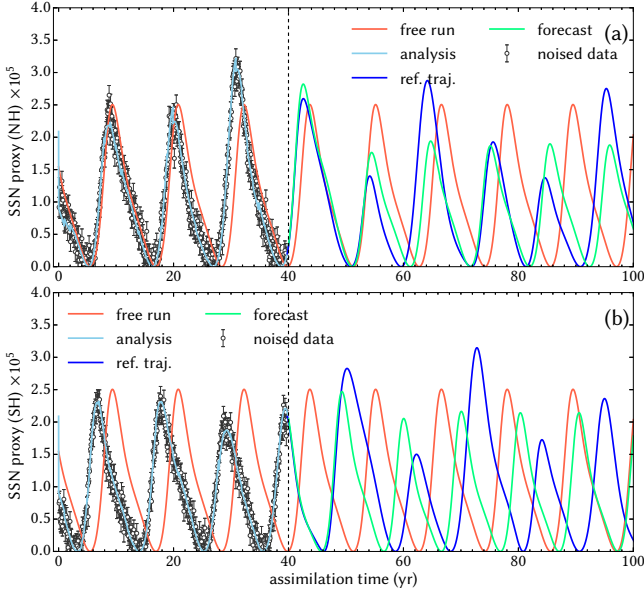


Figure 17. (a) Time series of the synthetic sunspot number at the Northern hemisphere. Red: free run of the dynamo model (unconstrained by data). Circles: monthly data extracted from the reference time series. Blue: reference time series. Light blue: data assimilation estimate. Green: time series of the forecast. (b) Same for the synthetic sunspot number at the Southern hemisphere.

assimilation. The error starts to grow for $10 \sim 20$ years but remains smaller than that of the free run. After that, it saturates and the magnitude of the error is of the same order or slightly lower than that of the free run trajectory.

Therefore, if we try to predict the magnetic observations by extrapolating the model based on the magnetic

field and the flow at the end of the hindcast, the prediction is reliable within 10 years if we are conservative, and up to 20 years with low confidence level. After 20 years, there is essentially no predictive capability in this experiment. This is longer than the time scale of the fluctuations, $\tau = 3$ years, added to the reference flow to produce the synthetic observations. The reasons are (i) the modeled flow contains a non-fluctuating part $\bar{\psi}(\mathbf{r})$ which is also captured during the assimilation process, (ii) the long term average of the fluctuations is zero, so that the assimilation procedure results in recovering the long term averaged flow up to a certain extent.

In Fig. 16, and the modeled sunspot-like proxy in Fig. 17, we also show the model trajectory after 40 years when no assimilation is performed. In particular, for the modeled sunspot proxy in Fig. 17, the trajectory still fits the observations reasonably after the 40^{th} years, for $1 \sim 2$ cycles ($10 \sim 20$ years). And then the trajectory diverges from the observations after 20 years, but still closer in phase compared with the free run. We are then confident that our data assimilation model can provide improved predictions in each hemisphere for up to $15 \sim 20$ years.

3.3. Numerical experiments with synthetic data based on different levels of stochastic fluctuation on the flow

We showed the estimation of the profile of the flow by the data assimilation technique using synthetic observations from the flux transport dynamo model with 30% fluctuations on the meridional circulation. In this section we study the performance of the assimilation algorithm with respect to the magnitude of the fluctuations on the meridional flow when generating the synthetic observations. We test the assimilation method with synthetic observations with 10% and 20% fluctuations, together with the 30% case illustrated above.

The fluctuations in cycle length of the synthetic observations increase with the level of the fluctuation introduced in the meridional circulation. As illustrated in Fig. 3, spread of the cycle length increases with the level of fluctuation of the flow. For the 30% case the range of the distribution is comparable to the sunspot cycles, but the lag between the northern and southern hemisphere is perhaps too large compared to that the real Sun, so lower level of anti-symmetric fluctuations in the flow (A_2) is useful to assess.

To compare the fitting of the synthetic observations of the flow among 3 tests (10%, 20% and 30% fluctuations), we show the corresponding integrated difference between the estimated and true toroidal field in Fig. 18. As the reference case, both the synthetic sunspot proxy and the surface line of sight magnetic field are taken as observations. During the 40 years of assimilation, the absolute difference between the truth and estimate increases with the magnitude of the fluctuation of the flow from which the synthetic data is produced. This is because the approximation of the true flow with step functions become less accurate as the fluctuation level (effectively the slope of the profile with respect to time) increases. As a result, the difference from the true magnetic configuration is higher. For the hindcast and forecast process discussed above, i.e., the corresponding results shown in Fig. 15 to Fig. 17, the error in estimate of the field and the predictive capability are of the same order, but better for lower

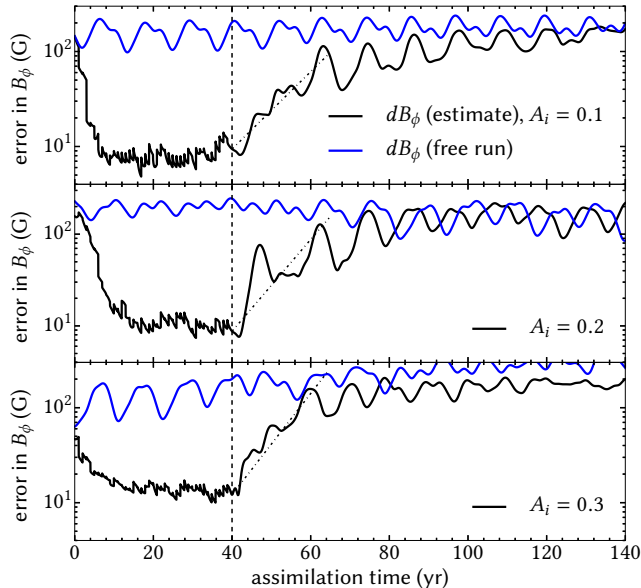


Figure 18. Top: Absolute difference between estimate of the toroidal magnetic field and the true magnetic field versus time, and where the true magnetic field is driven by meridional flow with 10% fluctuation. Blue: free run of the dynamo model (unconstrained by data). Black: data assimilation estimate, with data consisting of magnetic fields in line of sight and pseudo sunspot number. Middle and bottom: Same for 20% and (resp.) 30% fluctuations in meridional flow.

fluctuation level A_i 's as could be expected (Fig. 18).

Note that in this study, the fluctuation level added to the meridional flow imposes little effect on spin-up time. The time for the integrated difference to decrease and get flattened about unity is ~ 6 years for the 10% case, and ~ 10 years for the 20 and 30% case. Therefore, the spin-up time for the assimilation procedures to adapt to the truth depends mostly on the initial guess of magnetic configuration at the first year of the assimilation pipeline. Only a guess closer to the reality can shorten the spin-up time of the procedure.

We conclude from this study that the assimilation procedure is robust with respect to the fluctuation level of the time varying flow to be estimated. This is important as the latter affects the time variability of the cycle length (see Fig. 3).

4. DISCUSSION AND SUMMARY

Our numerical experiment shows the capability of data assimilation in estimating the deep meridional circulation of the Sun using magnetic proxies. As a preparation for analyzing real magnetic observations and for predicting the solar activity in the future, (in particular cycle 25), we adjust the flux transport model to have solar-like properties such as an 11-yr cycle period but modulated both in amplitude and frequency, and a time-varying meridional flow which may be asymmetric with respect to the equator. A stochastic time varying meridional circulation produces fluctuations in cycle period and amplitude, which make the simulation more solar-like compared with a dynamo model with a constant meridional flow, in terms of the irregularities. We construct synthetic magnetic proxies, like surface line of

sight magnetic field and the sunspot number, by relating them to the surface poloidal field and the toroidal field in the tachocline computed with the flux transport dynamo model. We also add noise to the data and the level of noise is consistent with the observations from the real Sun ($\sim 10\%$) (recall Sec. 2.1).

For the data assimilation method, we now include the initial conditions of the dynamo model as extra control parameters. The representation of the initial conditions is based on the statistical covariance of the dynamo model. We implement this extension within the corresponding adjoint model, such that the resulting framework is capable of estimating the meridional flow as well as the magnetic field within the convection zone throughout the assimilation window. We find that the spectrum of the covariance matrix peaks sharply; this enables a good approximation of the magnetic configuration on the meridional plane by projecting it on a truncated eigenbasis (in our test, 20 eigenmodes are taken) with the dominant eigenvalues, which facilitates the calculations.

We then show that, by ingesting the synthetic (monthly) observations on a yearly basis, and within each year applying the 4D-Var assimilation method, we are able to reconstruct the time varying flow over 40 years of the test period very well. The normalized misfit of data, close to unity, indicates an optimal fit in statistical sense. We also show that the method is robust for synthetic observations based on stochastic variations of the flow up to at least 30%, in terms of reconstruction of the flow and normalized misfit of data. By studying the time evolution of differences between the true magnetic field from the data and the forecast magnetic field, and by further comparing it with a free dynamo run where no data assimilation is done, we conclude that in this experiment, the predictive capability of the method is about 15 to 20 years, for the 30% fluctuation in the flow akin to the Sun (exceeding 2 sunspot cycles for lower fluctuation levels). Starting from a simple equatorial symmetric dynamo field and unicellular meridional flow, the method can give an asymmetric forecast field as well as asymmetric meridional flow, hence it is not impaired by symmetry of any sort. This is a strength as solar poles are known to reverse with a lag of up to 2 years (Shiota et al. 2012; DeRosa et al. 2012). Although there is a spin-up lasting the first 5 – 10 years of the assimilation, it is short compared to the period over which data are available; its duration is barely affected by the level of stochastic variation.

Though we prove the performance of the assimilation procedure with synthetic observations produced by the same flux transport dynamo model, this is not exactly a twin experiment, since we use step functions to approximate the flow in our assimilation model, instead of trying to reconstruct the exact time dependent flow that generates the data in Fig. 2. In generating the synthetic observations, the choice of the fluctuation level of the anti-symmetric component ($A_2 = 0.3$) may seem excessive, given the resulting phase difference between both hemispheres (up to 4 years as opposed to 1-2 years for the Sun). Regardless, we show that our pipeline is capable of reconstructing such an asymmetric configuration, while disentangling the contribution of both symmetric and antisymmetric flow components to the simulated solar activity. In summary, we are confident that our data

assimilation pipeline is robust and a promising tool for studying past and future solar activity.

There are, however, several limitations regarding the model and method used in our study. As the flow is perturbed in a stochastic manner, the predictability is limited by the time scale of the stochasticity, in our case, 3 years. An alternative is to introduce fluctuations in the flow in a non-stochastic manner. For example, including the flow as a dynamical variable of the model which is coupled with the magnetic field nonlinearly, which requires a different formulation and closed equation set. This more deterministic behavior could actually be more easily captured than a purely random variability. The long term amplitude modulation, such as the Gleissberg cycle, is also absent in the present model, and both can be implemented in future work. Regarding the assimilation, we approximate the time varying profile of flow with a linear combination of step functions. However, we can see that with higher fluctuation on the flow, the effect of the slope of the profile becomes important. The approximation with piecewise constant values will probably give a slightly higher misfit. Therefore, a better approximation of the flow in the assimilation routine is necessary. Thus, one next important step of improvement is to add the slope of the flow, i.e., the acceleration, to the control vector of the assimilation framework. This will double the number of parameters to represent the stream function. We show that the method is robust in this relatively hard version of non-constrained numerical experiment. On the other hand, it is possible to extend the applicability of the pipeline by introducing physical constraints to the framework. For example, in the case where we made attempt to hindcast with \tilde{W}_N^o and \tilde{W}_S^o alone, including more physical information in the form of background term is a possible improvement.

At this stage, it may be worthwhile to compare our approach and results with those obtained recently by Dikpati and colleagues (Dikpati et al. 2014; Dikpati et al. 2016, D16 henceforth for the latter). D16 carried out a set of numerical experiments using a sequential assimilation method (the EnKF) applied to a mean-field dynamo model which resembles closely the one we use in this study. The purpose of their proof-of-concept experiments (which rest on synthetic data) is to assess the capability of their method to capture the time-dependent behavior of the meridional circulation. To that end, they generate a set of synthetic observations based on a reference trajectory obtained by prescribing a time-dependent meridional circulation. Their meridional circulation has a fixed, one cell per hemisphere configuration, and its time-dependency is restricted to its amplitude. The amplitude has a steady and time-varying part. The time-varying part is deterministic, and controlled by a few modes of oscillations with periods of a few years to a decade (see their Figure 1). These deterministic oscillations yield fluctuations of about 40% about the mean (a figure similar to the 30% fluctuations that we generate, in a stochastic fashion though, in this study). Their synthetic observations consist of values of the poloidal (at the top of the convection zone) or toroidal fields (at the bottom of the convection zone). They vary the location and density of observations in their experiments. The true, reference values, are affected by an uncertainty

corresponding to a noise level of 4%. This has to be contrasted with observations of the pseudo-number of sunspots, and radial induction in the line of sight used here (affected by relative errors of 10% throughout our study). Dikpati et al convincingly show that by carrying out an analysis every 2 weeks (over the course of their 35-yr long experiments) using the EnKF, they can recover the time-dependent amplitude of the meridional flow using an ensemble size of 192 members, each analysis being applied to 10 observations consisting of near-surface poloidal fields from low latitudes and tachocline toroidal fields from mid-latitudes. Success in retrieving accurately the time-dependent amplitude depends on the locations of the available observations (those at high latitude being less valuable). They also find that a much shorter or longer interval between each update is detrimental to the success of the assimilation. A too short an interval (e.g. 5 days) does not allow the system to respond dynamically to a change in the flow amplitude, whereas a too large interval between two updates causes the trajectory of the assimilated system to depart excessively from the ‘true’ trajectory. They do not discuss the predictive capability of their system in the study (recall that we find in our synthetic setup a practical horizon of predictability of about 15 years). Our findings are overall in line with those of D16, in the sense that partial and noised observations of a kinematic dynamo with time-dependent flow features can be used to rather accurately estimate the time-dependent flow in the bulk of the system (not only where observations are available), by using an interpolation based on a physical model (this is essentially what data assimilation is about). The differences between their study and ours stand in the assimilation method (sequential vs variational), and in our estimation of the amplitude and shape of the meridional circulation (as opposed to the amplitude alone in D16), in addition to the estimate of the magnetic field. In our framework of variation assimilation, we use windows of width 1 year (40 of them for the hindcasting part), each of which containing 12 monthly sets of observations. Because we use a similar dynamo model as that used by D16, we also find that observations should be separated by a month or so, for the same reasons as those discussed above. With regard to the density of observations, we use more observations at a given time (129 versus 10 for D16). Our observations are indeed noisier, and, more importantly, the estimation problem that we are looking at is not the same. Our initial set-up for a given window consists of the flow properties (2 coefficients) and the initial magnetic field (20 coefficients). In assimilation parlance, our control vector has a size of 22 (recall Sec. 2.2) whereas, in the case of D16, a single parameter (the amplitude) has to be estimated. So it should come as no surprise that more observations are needed. In summary, the approach followed by D16 and ours prove capable of estimating the time-dependent properties of the meridional circulation in a controlled environment (that of a synthetic experiment). We have used synthetic data which we think closely resemble the data that we are going to use when dealing with the real (less controlled) problem.

To conclude, we presented here an assimilation method to estimate a time varying meridional circulation with synthetic magnetic proxies. The method is robust with an optimized data fit, and gives a predictive capability

of 1 \sim 2 sunspot cycles, depending on the amplitude of the fluctuating part of the sought flow. Future developments include (i) analyzing magnetic proxies of the real Sun with the data assimilation method, (ii) improving the representation of the meridional circulation in the

assimilation framework (e.g., by taking into account the acceleration of the fluid), and (iii) including physical constraints in the objective function.

APPENDIX

THE BABCOCK-LEIGHTON FLUX TRANSPORT MEAN FIELD DYNAMO MODEL

This section gives a brief description of the flux transport mean field dynamo model, i.e., the Babcock-Leighton model, with axisymmetry. This is the model used for the assimilation procedure, and to generate synthetic observations for our numerical experiment to verify the data assimilation technique. The model equations are (Dikpati & Charbonneau 1999; Jouve & Brun 2007; Jouve et al. 2008; Hung et al. 2015):

$$\partial_t A_\phi = \frac{\eta}{\eta_t} \left(\nabla^2 - \frac{1}{\varpi^2} \right) A_\phi - Re \frac{\mathbf{v}_p}{\varpi} \cdot \nabla (\varpi A_\phi) + C_s S(r, \theta, B_\phi), \quad (\text{A1})$$

$$\begin{aligned} \partial_t B_\phi = & \frac{\eta}{\eta_t} \left(\nabla^2 - \frac{1}{\varpi^2} \right) B_\phi + \frac{1}{\varpi} \frac{\partial(\varpi B_\phi)}{\partial r} \frac{\partial(\eta/\eta_t)}{\partial r} - Re \varpi \mathbf{v}_p \cdot \nabla \left(\frac{B_\phi}{\varpi} \right) \\ & - Re B_\phi \nabla \cdot \mathbf{v}_p + C_\Omega \varpi [\nabla \times (A_\phi \mathbf{e}_\phi)] \cdot \nabla \Omega, \end{aligned} \quad (\text{A2})$$

where $A_\phi(\vec{r}, t)$ and $B_\phi(\vec{r}, t)$ are the poloidal potential field and the toroidal field respectively. $\varpi = r \sin \theta$, and \mathbf{v}_p is the poloidal velocity, i.e., the meridional circulation, Ω is the profile of the differential rotation, and S is the source of the poloidal field at the solar surface. The domain is $(r, \theta) \in [0.6, 1] \times [0, \pi]$. The toroidal field $B_\phi = 0$ at the boundary of the domain, and for A_ϕ , we impose the pure radial field approximation at the surface, i.e., $\partial_r(r A_\phi) = 0$ at $r = 1$, and $A_\phi = 0$ on all the other boundaries. The length is normalized with solar radius R_\odot , time is normalized with the diffusive time scale R_\odot^2/η_t where η_t is the envelope diffusivity. We introduce 3 dimensionless parameters, namely the Reynolds number based on the meridional flow speed $Re = R_\odot v_o/\eta_t$, the strength of the Babcock-Leighton source $C_s = R_\odot s_o/\eta_t$ and the strength of the Ω -effect $C_\Omega = \Omega_o R_\odot^2/\eta_t$, and $\Omega_o = 2\pi \times 456 \text{ nHz}$.

We use the same dynamo model as we did in Paper I here except that we have some modifications. First, we use a slightly more complex resistivity profile, a 2-step profile in radial direction,

$$\frac{\eta}{\eta_t} = \frac{\eta_c}{\eta_t} + \frac{\eta_m}{2\eta_t} \left[1 + \tanh \left(\frac{r - r_{bm}}{d_1} \right) \right] + \frac{1}{2} \left[1 + \tanh \left(\frac{r - r_2}{d_1} \right) \right], \quad (\text{A3})$$

where $\eta_c = 10^9 \text{ cm}^2 \text{ s}^{-1}$, $\eta_m = 10^{11} \text{ cm}^2 \text{ s}^{-1}$, $\eta_t = 5 \times 10^{11} \text{ cm}^2 \text{ s}^{-1}$, $r_{bm} = 0.72$, $r_2 = 0.95$, $d_1 = 0.016$. In this resistivity profile, the high diffusion at the surface brings a lower ratio of radial magnetic field at the pole to that near the equator (Hotta & Yokoyama 2010). Second, the meridional circulation is also modified. The meridional flow is crucial in this model, it advects the magnetic field poleward at the surface, and equatorward deeper in the convection zone when it is unicellular per hemisphere.

To obtain dynamo generated magnetic field with fluctuations in period and amplitude instead of a constant 22 years and peak amplitude, we use a time varying meridional circulation for the model. We express the flow in the convection zone as the curl of a stream function:

$$\mathbf{v}_p = \nabla \times (\psi \mathbf{e}_\phi), \quad (\text{A4})$$

and we expand the stream function as

$$\begin{aligned} \psi(r, \theta, t) = & -\frac{2}{\pi} \left(\frac{r - r_{mc}}{1 - r_{mc}} \right)^{2.5} (1 - r_{mc}) \\ & \times \begin{cases} \sum_{k=1}^m \sum_{l=1}^n d_{k,l}(t) \sin \left[\frac{k\pi(r-r_{mc})}{1-r_{mc}} \right] P_\ell^1(-\cos \theta) & \text{if } r_{mc} \leq r \leq 1 \\ 0 & \text{if } r_{bot} \leq r < r_{mc}, \end{cases} \end{aligned} \quad (\text{A5})$$

where P_ℓ^1 are the associated Legendre polynomials of order 1. The meridional flow is allowed to penetrate to a radius $r_{mc} = 0.65$, i.e. slightly below the base of the convection zone located at $r_c = 0.7$. Notice that the radial dependence of the stream function is raised to $(r - r_{mc})^{2.5}$, compared with $(r - r_{mc})^2$ in Jouve et al. (2008) and Paper I. This can give a higher ratio of maximum flow v_θ at the surface with respect to that of the base of the convection zone, which in turn results in a 22-year magnetic cycle dynamo model with a surface flow $\sim 20 \text{ ms}^{-1}$ (Yeates et al. 2008), consistent with the observed solar surface flow (Ulrich 2010; Basu & Antia 2010; Komm et al. 2015). The expansion coefficients $d_{k,l}(t)$ are modulated in time so that the flow is time dependent. Other parameters used in the model include the Reynolds number $Re = 310$, $C_s = 20$, $C_\Omega = 2.78 \times 10^4$, i.e., $v_o = 22.3 \text{ ms}^{-1}$, $s_o = 1.44 \text{ ms}^{-1}$. The grid size is $n_r \times n_{th} = 129 \times 129$, and the time step is 10^{-6} , equivalent to 0.112 day. In the illustrative example of the numerical experiment starting from Sec. 2.1, we chose a model flow (Equation (3)) characterized by $d_{1,2}(t) = 1/3c_1(t)$,

and $d_{2,1}(t) = 0.0865c_2(t)$, $d_{2,3}(t) = 0.130c_2(t)$ [$d_{k,l} = 0$ for other (k,l) 's]. Of course, model based on stream functions defined by different combination of $d_{k,l}$'s can be investigated.

ASSIMILATION PROCEDURE AND REPRESENTATION OF INITIAL CONDITIONS IN THE PARAMETER SPACE

We present here the technical details of incorporating the initial magnetic field of the dynamo model to the control parameter space as a reference.

The initial conditions for the assimilation model are the magnetic potential of the poloidal field and the toroidal magnetic field on the meridional plane at the beginning of an assimilation window, i.e., $A_\phi(r, \theta, t_s)$ and $B_\phi(r, \theta, t_s)$, respectively. To extend the parameter space in the present 4D-Var framework, the initial conditions become part of the implicit dependences of the objective function.

As mentioned in Sec. 2.2, we need a representation of $A_\phi(r, \theta, t_s)$ and $B_\phi(r, \theta, t_s)$ in the parameter space such that the associated dimension is small compared with $N^o \sim 1500$. To address this problem, we represent the magnetic field on the meridional plane with a truncated set of eigenbasis of the covariance matrix of a dynamo field trajectory. We find that for a magnetic trajectory from the flux transport dynamo model $A_\phi(r, \theta, t)$ and $B_\phi(r, \theta, t)$, if we calculate the covariance matrix over a long time (which covers the 22-years period of the magnetic cycle), the magnetic field at any time in the trajectory $A_\phi(r, \theta, t_o)$, $B_\phi(r, \theta, t_o)$ can be approximated effectively with a linear combination of only the first few eigenvectors of the covariance matrix with leading eigenvalues. We define the field column vector

$$\mathbf{y}(t) = [A_{1,1}(t), \dots, A_{n_r,1}(t), A_{1,2}(t), \dots, A_{i,j}(t), \dots, A_{n_r, n_\theta}(t), B_{1,1}(t), \dots, B_{n_r,1}(t), B_{1,2}(t), \dots, B_{i,j}(t), \dots, B_{n_r, n_\theta}(t)]^T, \quad (\text{B1})$$

where $X_{i,j}(t) = X(r_i, \theta_j, t)$ with X be A_ϕ or B_ϕ . r_i, θ_j are the spatial grid points of the magnetic field, so the size of the vector is $2n_r n_\theta$, with n_r, n_θ being the grid size in radial and polar direction in the coordinate space respectively. The covariance matrix \mathbf{P} about a particular time t_o is defined as

$$P_{k,l}(t_o) = \overline{[\mathbf{y} - \mathbf{y}(t_o)]_k [\mathbf{y} - \mathbf{y}(t_o)]_l^T}, \quad (\text{B2})$$

where the over-bar denotes averaging over time, in our case, two magnetic cycles. Notice that the indices k, l are the indices of the field vector and the covariance matrix, with $1 \leq k, l \leq 2n_r n_\theta$. The diagonal entries of \mathbf{P} are the variances of A_ϕ and B_ϕ at each grid point respectively. The off diagonal entries, depending on the indices, are the covariances of A_ϕ (B_ϕ) between any 2 different grid points, or the covariances between A_ϕ and B_ϕ at any 2 grid points. It measures the auto-correlations of A_ϕ and B_ϕ , and also the correlation between A_ϕ and B_ϕ . We diagonalize the matrix, project $\mathbf{y}(t_o)$ on the eigenbasis and approximate $\mathbf{y}(t_o)$ in a truncated linear combination of the eigenvectors:

$$\mathbf{y}(t_o) \sim \sum_{i=1}^m [\mathbf{w}_i^T \mathbf{y}(t_o)] \mathbf{w}_i, \quad (\text{B3})$$

where $\{\mathbf{w}_i\}$ is the eigenbasis of \mathbf{P} , with the corresponding eigenvalues $\lambda_1 \geq \lambda_2 \geq \dots \geq \lambda_m$, m is the number of basis vector used in the approximation. Notice that the covariance matrix is positive definite and symmetric by definition, thus the corresponding eigenbasis is orthonormal.

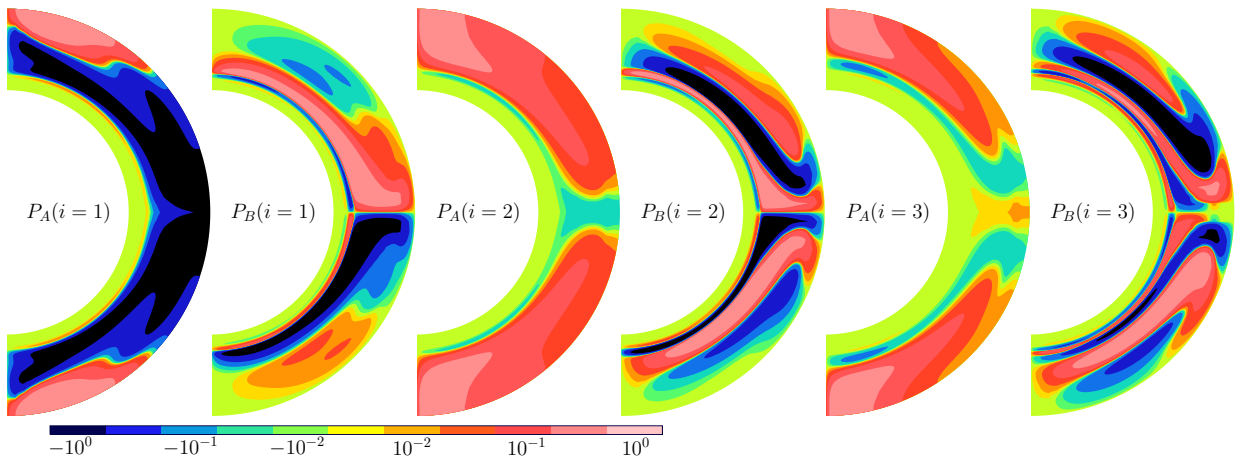


Figure 19. First 3 eigenfunctions (with leading eigenvalues) of the covariance matrix of a dynamo model based on a unicellular flow, expressed on the meridional plane. P_A (resp. P_B) is the poloidal (resp. toroidal) component of the eigenvector. The higher modes with lower eigenvalues display more structures on the meridional plane.

To reduce the size of computation, we only include every other grid point in r and θ in the construction of the field vector and covariance matrix, and interpolate in the coordinate space to approximate the magnetic field. This reduces the size of \mathbf{P} by a factor of 16. As shown in Fig. 20, this has little impact on the scheme, whose accuracy is mostly

controlled by the level of noise impacting the data. In addition to the spectrum and eigenbasis of the covariance matrix we showed in Fig. 7 of Sec. 2.2, we also show the physical structure of the first 3 eigenfunctions in Fig. 19: Higher modes with lower eigenvalues display more complex structures in the meridional plane.

The spectrum of the covariance matrix (Fig. 7 (a)), and the error in the approximation of a dynamo field by a truncated basis of eigenvectors (Fig. 7 (b)) drop rapidly with the level of truncation. The error in Fig. 7 (b) flattens to a few percents, a consequence of the every other point approximation discussed above; again, this approximation does not impact the overall accuracy of the scheme, which is controlled by the observational noise.

The forward model is initialized with such a representation, and the corresponding adjoint operator is developed similarly. (Recall that the derivative of the objective function with respect to the initial field is the corresponding adjoint field at the beginning of the assimilation window Paper I.) The covariance matrix in the n^{th} step is evaluated from the dynamo model forecast in the $(n - 1)^{th}$ assimilation window. For $n = 1$, the dynamo model is a simple one based on unicellular flow. Updating of the covariance matrix after each year can ensure we can capture the change in the dynamics and statistics of the dynamo action, and in consequence the initial conditions can be reasonably approximated.

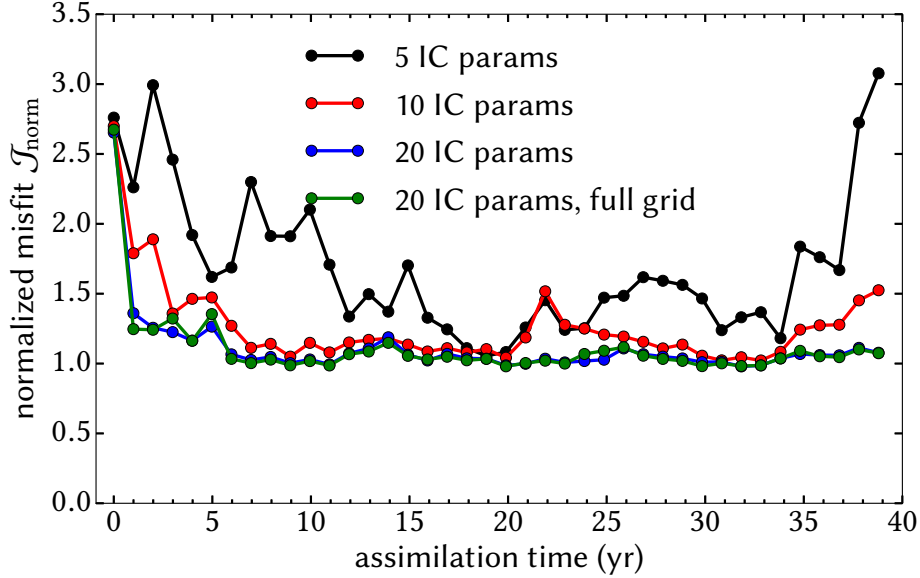


Figure 20. Normalized misfit versus time over the course of the assimilation for different parameterizations of the magnetic component of the control vector. Black (resp. red, resp. blue): 5 (resp. 10, resp. 20) eigenmodes are retained after the diagonalization of the covariance matrix constructed from the knowledge of the magnetic field at every other grid point. Green: 20 eigenmodes are retained after the diagonalization of the magnetic covariance matrix constructed from the knowledge of the magnetic field at every grid point.

In Sec. 2.2 we truncate the expansion of the initial condition to $m = 20$ leading eigenvectors, as the spectrum of \mathbf{P} and the of error in expanding a simple dynamo field drop rapidly when the mode number increases (Fig. 7). To justify this approximation, we perform the assimilation experiment of our reference case, at various m , and using a simple unicellular flow as the prior for the first year of assimilation. We show the misfit in Fig. 20. We can see that at $m = 20$, we have an optimal misfit of ~ 1 , and for more aggressive truncation of the eigenbasis representation, there will be underfitting. The size of the truncated basis required is related to the spectrum of the covariance matrix. In Fig. 21 (a), we can see that the covariance matrices for the models forecast during the 40 years of assimilation give broader spectra compared with a unicellular prior. This means higher eigenmodes are more important for more complicated magnetic configuration as the assimilation procedure proceeds. To illustrate that, we show the error in expanding the forecast magnetic field at the end of the assimilation of 40 years with the eigenbasis of the final forecast model in Fig. 21 (b). Compared with Fig. 7 (b), the error converges at higher m , but still soundly contained in our chosen size $m = 20$. Therefore, we justify the truncation of the eigenbasis in representation of the initial condition at $m = 20$ in our tests.

To summarize, the procedures of the data assimilation for our course of 40 years analysis of synthetic observations are listed as follow:

1. For $n = 1$, calculate the covariance matrix $\mathbf{P}_1(t_{s,1})$ of the initial guess of the initial conditions. (Here $t_{s,n}$ and $t_{e,n}$ are respectively the starting time and the ending time of the assimilation window at the n^{th} step and we have $t_{s,n} = t_{e,n-1}$.) Usually the guess is the dynamo model based on unicellular flow with magnetic cycle of 22-years. Diagonalize the covariance matrix and project the guess of initial magnetic field on the eigenbasis to obtain $\mathbf{x}_{1,IC}^g$, the superscript g stands for guess. Combined with the guess of the meridional flow $\mathbf{x}_{1,MC}^g$, we have \mathbf{x}_1^g for assimilation of the observations of the first year.

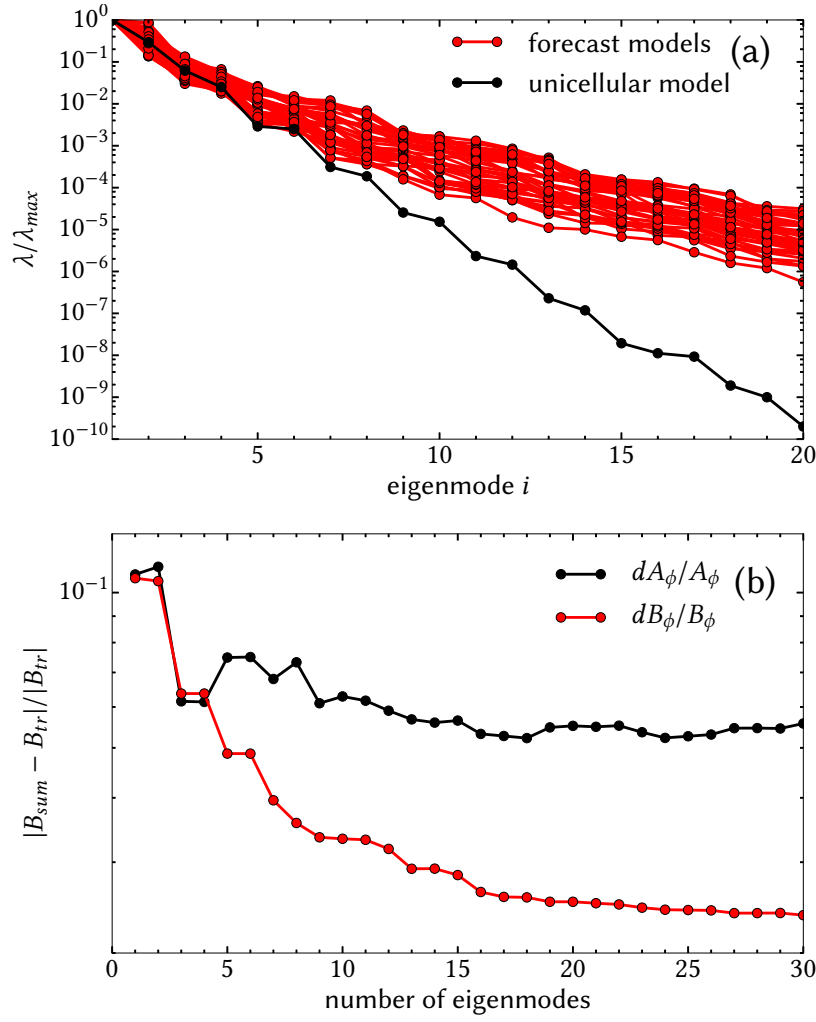


Figure 21. (a) Red: Eigenvalue spectra of the covariance matrices of the hind-cast dynamo models for the estimated flow in each of the 40 years assimilation. The corresponding spectrum of the dynamo model for a unicellular steady flow is shown again in a black curve for comparison. (b) Error in the approximation of the hind-cast magnetic field at the end of the assimilation at the 40th year, as a function of the size of a truncated eigenbasis. Black: error in the poloidal field. Red: error in the toroidal field.

2. Based on the synthetic observations of the first year, with an appropriate guess \mathbf{x}_1^g , the data assimilation procedure gives a forecast of magnetic field, and an analyzed meridional flow \mathbf{x}_1^f , the superscript f stands for forecast.
3. For $n > 1$, construct the covariance matrix $\mathbf{P}_n(t_{e,n-1})$ of the dynamo model based on the analyzed flow at the $n-1$ assimilation $\mathbf{x}_{n-1,MC}^f$. Evaluate the eigenbasis of $\mathbf{P}_n(t_{e,n-1})$, and project the analyzed magnetic field from the assimilation window $n-1$ at $t_{e,n-1}$ and obtain $\mathbf{x}_{n,IC}^g$. The initial guess of the flow in step n will be the analyzed flow in step $n-1$, i.e., $\mathbf{x}_{n,MC}^g = \mathbf{x}_{n-1,MC}^f$. So we obtain \mathbf{x}_n^g .
4. Based on the synthetic observations at the n^{th} year, with the guess \mathbf{x}_n^g , the data assimilation procedure gives the analysis \mathbf{x}_n^f . The analyzed magnetic field and the estimated flow will give the initial guess \mathbf{x}_{n+1}^g and so on and so forth until $t_{e,40}$ is reached.

BRIEF ANALYSIS OF TEMPORAL VARIABILITY OF MERIDIONAL FLOW

In this section we present an analysis of the surface flow of the Sun which shows the temporal variability, using data from Ulrich (2010).

In Sec. 2.1, we mentioned that the correlation time of the spectrum of the surface meridional flow is of order 1 year. The observed flow on the solar surface can be found, for example, in Ulrich & Boyden (2005); Ulrich (2010). The flow is dominantly poleward at the surface. We project the flow on the associated Legendre polynomials of order 1 (P_ℓ^1), and plot the mean square (in time) of the spectrum in Fig. 22. The modes which are odd about the equator, i.e. with even ℓ , are dominant over their even parity counterparts, and the spectrum in general decreases with increasing ℓ .

To study the temporal variability of the flow, we evaluate the auto-correlation of the expansion coefficients on P_ℓ^1 s,

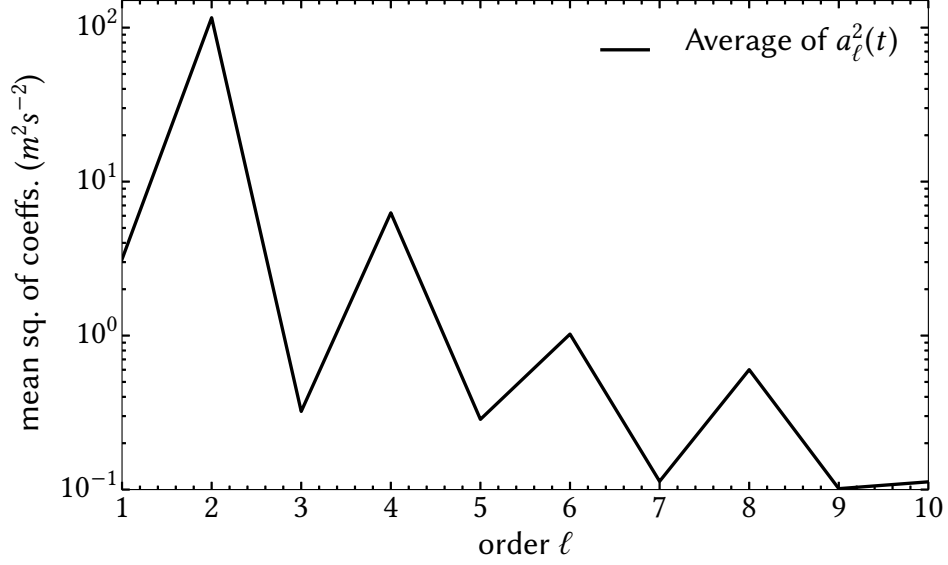


Figure 22. The mean square (in time) of the expansion coefficients of the surface flow as a function of the degree ℓ of associate Legendre polynomials of order 1, P_ℓ^1 .

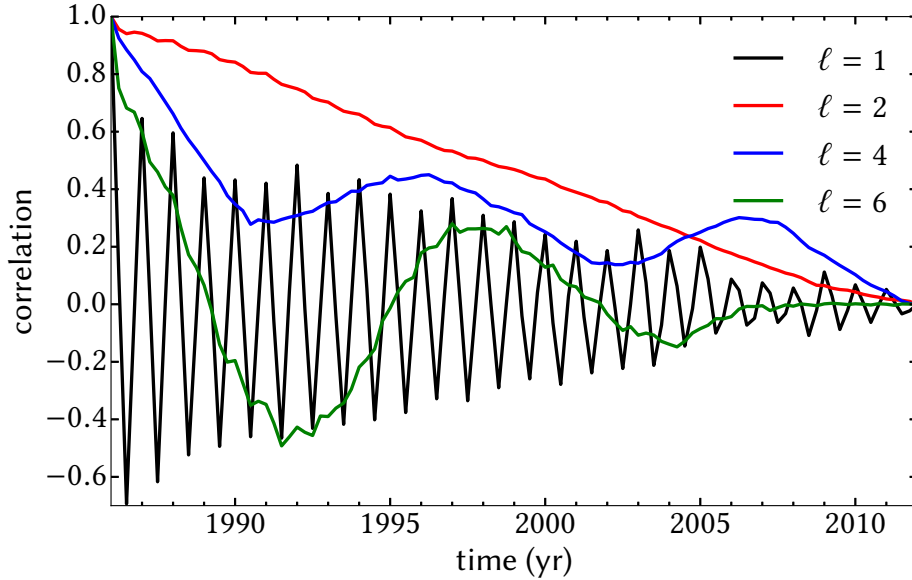


Figure 23. The autocorrelation functions of the time series of the expansion coefficients of the surface flow (on P_ℓ^1). Only the 4 coefficients with highest mean square in time average are shown ($\ell = 1$ (black), 2 (red), 4 (blue), 6 (green)).

for $\ell = 1, 2, 4, 6$ and show it in Fig. 23. The first 3 equatorially odd modes display correlation times of at least 5 years, and the first equatorially even counterpart $\ell = 1$, is of correlation times ~ 1 year. We have thus decided to use a modulation for the flow of 3 years as illustrated in Fig. 2 and 4, which results in time dependent modulation of the flow in good agreement with observations.

ACKNOWLEDGMENTS

We acknowledge financial support of the UnivEarthS Labex program at Sorbonne-Paris-Cité (ANR-10-LABX-0023 and ANR-11-IDEX-0005-02) through project SolarGeoMag. We also acknowledge the support from the ERC PoC SolarPredict project, CNES Solar Orbiter and INSU/PNST grants, and Idex SPC through the DAMSE project. We are grateful to Roger Ulrich for giving us digital access to his surface meridional circulation measurements, we also thank SIDC for access to their sunspot series observations. Wilcox Solar Observatory data used in this study was obtained via the web site <http://wso.stanford.edu> at 2017 : 09 : 29 03 : 15 : 25 PDT courtesy of J.T. Hoeksema. ASB thanks M. DeRosa and A. Title for useful discussions. Numerical computations are performed on the S-CAPAD

platform, IGP, France and on DIM-ACAV funded Anais server at CEA/IRFU. IGP contribution nnnn.

REFERENCES

- Babcock, H. W. 1961, *ApJ*, 133, 572
- Basu, S. & Antia, H. M. 2010, *ApJ*, 717, 488
- Belucz, B., Dikpati, M., & Forgács-Dajka, E. 2015, *ApJ*, 806, 169
- Brandenburg, A. & Spiegel, E. A. 2008, *Astronomische Nachrichten*, 329, 351
- Brun, A. S. 2007, *Astronomische Nachrichten*, 328, 329
- Bushby, P. J. & Tobias, S. M. 2007, *ApJ*, 661, 1289
- Charbonneau, P. 2010, *Living Reviews in Solar Physics*, 7
- Charbonneau, P. & MacGregor, K. B. 1997, *ApJ*, 486, 502
- Choudhuri, A. R., Schussler, M., & Dikpati, M. 1995, *A&A*, 303, L29
- Clette, F. & Lefèvre, L. 2012, *Journal of Space Weather and Space Climate*, 2, A06
- Clette, F., Svalgaard, L., Vaquero, J. M., & Cliver, E. W. 2014, *Space Sci. Rev.*, 186, 35
- DeRosa, M. L., Brun, A. S., & Hoeksema, J. T. 2012, *ApJ*, 757, 96
- Dikpati, M., Anderson, J. L., & Mitra, D. 2014, *Geophys. Res. Lett.*, 41, 5361
- Dikpati, M., Anderson, J. L., & Mitra, D. 2016, *The Astrophysical Journal*, 828, 91
- Dikpati, M. & Charbonneau, P. 1999, *ApJ*, 518, 508
- Dikpati, M. & Gilman, P. A. 2006, *ApJ*, 649, 498
- Fournier, A., Hulot, G., Jault, D., Kuang, W., Tangborn, A., Gillet, N., Canet, E., Aubert, J., & Lhuillier, F. 2010, *Space Sci. Rev.*, 155, 247
- Glücksberg, W. 1939, *The Observatory*, 62, 158
- Haber, D. A., Hindman, B. W., & Toomre, J. 2003, in *ESA Special Publication*, Vol. 517, *GONG+ 2002. Local and Global Helioseismology: the Present and Future*, ed. H. Sawaya-Lacoste, 103–108
- Haber, D. A., Hindman, B. W., Toomre, J., Bogart, R. S., & Hill, F. 2002a, in *Bulletin of the American Astronomical Society*, Vol. 34, *American Astronomical Society Meeting Abstracts #200*, 645
- Haber, D. A., Hindman, B. W., Toomre, J., Bogart, R. S., Larsen, R. M., & Hill, F. 2002b, *ApJ*, 570, 855
- Hale, G. E. 1908, *ApJ*, 28, 315
- Hale, G. E., Ellerman, F., Nicholson, S. B., & Joy, A. H. 1919, *ApJ*, 49, 153
- Hathaway, D. H. 2010, *Living Reviews in Solar Physics*, 7, 1
- Hathaway, D. H., Wilson, R. M., & Reichmann, E. J. 1999, *J. Geophys. Res.*, 104, 22
- Hazra, G., Karak, B. B., & Choudhuri, A. R. 2014, *ApJ*, 782, 93
- Hotta, H. & Yokoyama, T. 2010, *The Astrophysical Journal*, 709, 1009
- Hung, C. P., Jouve, L., Brun, A. S., Fournier, A., & Talagrand, O. 2015, *The Astrophysical Journal*, 814, 151
- Jouve, L. & Brun, A. S. 2007, *A&A*, 474, 239
- Jouve, L., Brun, A. S., Arlt, R., Brandenburg, A., Dikpati, M., Bonanno, A., Käpylä, P. J., Moss, D., Rempel, M., Gilman, P., Korpi, M. J., & Kosovichev, A. G. 2008, *A&A*, 483, 949
- Jouve, L., Brun, A. S., & Talagrand, O. 2011, *ApJ*, 735, 31
- Kholikov, S., Serebryanskiy, A., & Jackiewicz, J. 2014, *ApJ*, 784, 145
- Kitiashvili, I. & Kosovichev, A. G. 2008, *ApJL*, 688, L49
- Komm, R., González Hernández, I., Howe, R., & Hill, F. 2015, *Sol. Phys.*, 290, 3113
- Leighton, R. B. 1969, *ApJ*, 156, 1
- Ossendrijver, M., Stix, M., Brandenburg, A., & Rüdiger, G. 2002, *A&A*, 394, 735
- Parker, E. N. 1993, *ApJ*, 408, 707
- Pesnell, W. D. 2016, *Space Weather*, 14, 10, 2015SW001304
- Petrovay, K. 2010, *Living Reviews in Solar Physics*, 7, 6
- Schad, A., Timmer, J., & Roth, M. 2013, *ApJL*, 778, L38
- Scherrer, P. H., Bogart, R. S., Bush, R. I., Hoeksema, J. T., Kosovichev, A. G., Schou, J., Rosenberg, W., Springer, L., Tarbell, T. D., Title, A., Wolfson, C. J., Zayer, I., & MDI Engineering Team. 1995, *Sol. Phys.*, 162, 129
- Schou, J., Scherrer, P. H., Bush, R. I., Wachter, R., Couvidat, S., Rabello-Soares, M. C., Bogart, R. S., Hoeksema, J. T., Liu, Y., Duvall, T. L., Akin, D. J., Allard, B. A., Miles, J. W., Rairden, R., Shine, R. A., Tarbell, T. D., Title, A. M., Wolfson, C. J., Elmore, D. F., Norton, A. A., & Tomczyk, S. 2012, *Sol. Phys.*, 275, 229
- Shiota, D., Tsuneta, S., Shimojo, M., Sako, N., Orozco Suárez, D., & Ishikawa, R. 2012, *ApJ*, 753, 157
- Stix, M. 2002, *The sun: an introduction*
- Svalgaard, L., Cagnotti, M., & Cortesi, S. 2017, *Sol. Phys.*, 292, 34
- Svalgaard, L. & Schatten, K. H. 2016, *Sol. Phys.*, 291, 2653
- Talagrand, O. 2010, in *Data Assimilation: Making Sense Of Observations*, ed. Lahoz, W and Khattatov, B and Menard, R (Springer), 41–67
- Tobias, S. M., Brummell, N. H., Clune, T. L., & Toomre, J. 1998, *ApJL*, 502, L177
- Ulrich, R. K. 2010, *ApJ*, 725, 658
- Ulrich, R. K. & Boyden, J. E. 2005, *The Astrophysical Journal Letters*, 620, L123
- Upton, L. & Hathaway, D. H. 2014, *ApJ*, 780, 5
- Usoskin, I. G. 2013, *Living Reviews in Solar Physics*, 10, 1
- Švanda, M., Kosovichev, A. G., & Zhao, J. 2007, *ApJL*, 670, L69
- . 2008, *ApJL*, 680, L161
- Vaquero, J. M., Svalgaard, L., Carrasco, V. M. S., Clette, F., Lefèvre, L., Gallego, M. C., Arlt, R., Aparicio, A. J. P., Richard, J.-G., & Howe, R. 2016, *Sol. Phys.*, 291, 3061
- Wolf, R. 1850, *Astronomische Mitteilungen der Eidgenössischen Sternwarte Zurich*, 1, 3
- Yeates, A. R., Nandy, D., & Mackay, D. H. 2008, *The Astrophysical Journal*, 673, 544
- Zhao, J., Bogart, R. S., Kosovichev, A. G., Duvall, T. L., & Hartlep, T. 2013a, in *AAS/Solar Physics Division Meeting*, Vol. 44, *AAS/Solar Physics Division Meeting*, 204.02
- Zhao, J., Bogart, R. S., Kosovichev, A. G., Duvall, Jr., T. L., & Hartlep, T. 2013b, *ApJL*, 774, L29
- Zhao, J., Kosovichev, A. G., & Duvall, Jr., T. L. 2004, *ApJL*, 607, L135
- Zhao, J., Nagashima, K., Bogart, R. S., Kosovichev, A. G., & Duvall, Jr., T. L. 2012, *ApJL*, 749, L5