



Optimal Resource Scheduling for Energy Harvesting Communications under Strict Delay Constraint

Ibrahim Fawaz, Mireille Sarkiss, Philippe Ciblat

► To cite this version:

Ibrahim Fawaz, Mireille Sarkiss, Philippe Ciblat. Optimal Resource Scheduling for Energy Harvesting Communications under Strict Delay Constraint. 2018 IEEE International Conference on Communications (ICC 2018), May 2018, Kansas City, United States. 10.1109/ICC.2018.8422088 . cea-01888837

HAL Id: cea-01888837

<https://cea.hal.science/cea-01888837>

Submitted on 5 Oct 2018

HAL is a multi-disciplinary open access archive for the deposit and dissemination of scientific research documents, whether they are published or not. The documents may come from teaching and research institutions in France or abroad, or from public or private research centers.

L'archive ouverte pluridisciplinaire **HAL**, est destinée au dépôt et à la diffusion de documents scientifiques de niveau recherche, publiés ou non, émanant des établissements d'enseignement et de recherche français ou étrangers, des laboratoires publics ou privés.

Optimal Resource Scheduling for Energy Harvesting Communications under Strict Delay Constraint

Ibrahim Fawaz^{1,2}, Mireille Sarkiss¹, and Philippe Ciblat²

¹ LIST, CEA, Communicating Systems Laboratory, F-91191 Gif-sur-Yvette, France

² LTCI, Télécom ParisTech, Université Paris-Saclay, F-75013, Paris, France

Email: ibrahim.fawaz@cea.fr, mireille.sarkiss@cea.fr, philippe.ciblat@telecom-paristech.fr

Abstract—This paper investigates the resource scheduling minimizing the packet loss when the wireless communication system operates with Energy Harvesting (EH) based devices. The packet loss occurs when the buffer is overflowed and when the queued packet is older than a certain pre-defined threshold. We so consider a strict delay constraint rather than an average delay constraint. The associated optimization problem can be modeled as Markov Decision Problem (MDP) where the actions are the number of packets sent on the known channel at each slot. The optimal deterministic offline policy is exhibited through dynamic programming techniques, i.e. Value Iteration (VI) algorithm. We show the gain in the number of transmitted packets and the consumed energy is substantial compared to a naive policy which forces the system to send the maximum number of packets using the available energy in the battery.

I. INTRODUCTION

Energy harvesting communications have recently attracted considerable attention in highly connected IoT and mobile cellular networks. Indeed, the energy harvesting technology has been proposed as a promising and viable solution to substantially extend the lifetime of mobile devices while reducing their dependency on conventional grid power. Hence, this improves self-sustainability of wireless networks and limits their growing carbon footprint. In such dense networks, energy harvesting-enabled devices can gather the energy from alternative, natural or man-made, energy sources in their surrounding environment to power their communications. Depending on the environment conditions, the harvested energy arrives in intermittent amounts at random times. It can be then stored in a capacity-limited energy storage device or battery for future use. The stochastic behavior and uncertainty of available energy in addition to the time-varying channel conditions may degrade the transmission performance due to intolerable latency and packet loss. Therefore, designing efficient data transmission policies, which adapt the rate and power according to channel and energy dynamics, is essential to satisfy users quality of service (QoS) and ensure the system reliability. In particular, optimizing resource scheduling of mobile devices becomes a more challenging issue under energy harvesting constraints.

This work has received funding from the European Unions Horizon 2020 research and innovation programme under the Marie Skłodowska-Curie grant agreement No 675891.

During the past decade, extensive research efforts have focused on investigating resource scheduling with EH capabilities at the transmitters: [1], [2] for overview, and [3]–[12] for original works. In these works, several performance criteria have been optimized such as throughput, completion time, average delay, outage probability, for various models of energy arrival rate, battery capacity, or fading channel. Optimal approaches have been proposed based mainly on offline and online scheduling schemes, depending whether causal or non-causal channel state information (CSI) and energy state information (ESI) are available at the transmitter.

More precisely, two problems were considered in [3]: throughput maximization by a given deadline and transmission completion time minimization, under channel and energy variations. The authors proposed optimal offline policies based on directional water-filling in a non-causal setting and online policies using continuous time stochastic dynamic programming in a causal setting. The throughput maximization problem was similarly investigated in [4] but for limited energy battery and limited data buffer, allowing thus buffer overflow. The optimal solutions were proposed by decoupling energy and data problems using a new variant of directional water-filling with added energy pumps, or applying recursively the shortest path algorithm. For causal state information, the same throughput maximization problem was modeled as Markov decision process in [5] and stochastic optimization techniques were used. [6] addressed the tradeoff between energy overflow and energy shortage by maximizing the scheduling throughput for capacity-limited EH system. Online algorithms were proposed to solve this problem for static and fading channels based on a new estimation method of future energy arrivals without any prior information. Both offline and online algorithms were also provided in [7] to maximize the throughput in finite-horizon scheduling with EH transmitter. The offline solution is expressed in terms of water levels and the online solution minimizes successively the expected throughput losses with respect to the offline optimal decision. Finite-horizon optimization problem was also considered in [8] to minimize the outage probability in a EH system. A low complexity fixed threshold transmission is proposed based on the offline mixed integer linear programming solution. In [9], an average delay optimal scheduling problem was studied

where the transmitter relies on hybrid energy supplies. In fact, the data transmission is mainly powered by harvested energy and resorts to power grid as a backup under energy consumption constraint. The problem was modeled as a two-dimensional Markov chain and an optimal transmission policy depending on a critical threshold of the queue length is proposed using Linear programming formulations. In [10], optimal deterministic scheduling in EH-powered network was obtained by minimizing the packet blocking probability, due to non-transmission at the transmitter, under an average delay (equivalently queue length) constraint and an average consumed energy constraint. The problem was formulated as an MDP and solved using dynamic programming Value Iteration algorithm. Moreover, [11] minimized the weighted packet loss rate under an average delay constraint in wireless sensor networks. The constrained MDP was formulated with linear value iteration approximation that locally determines the energy allocation at every EH wireless node using multilevel water-filling. Near-optimal control policy was derived by applying stochastic online learning based on post-decision state framework. In [12], MDP modeling and online post-decision learning approach were also derived to maximize the data arrival rate at the transmitter queue under delay and energy constraints. Two delay constraints were separately considered: average delay constraint and statistical delay constraint. This latter is a bounded delay with maximum acceptable delay-outage probability constraint.

In this paper, we address resource scheduling for a single user communication powered by energy harvesting. Unlike certain aforementioned works [9]–[11], we impose here a strict delay constraint on each queued packet stored in the buffer rather than an average delay constraint. This severe constraint has been introduced in our previous work [13] to find optimal scheduling policy that minimizes the average power consumption. We now incorporate energy harvesting aspects within the scheduling problem. Then, taking into account sporadic energy arrivals, random data arrivals and time-varying channel states, we minimize the packet loss rate, i.e., the average number of discarded packets, induced by strict delay constraint in addition to buffer overflow constraint. We formulate the problem as an MDP and solve it using Relative Value Iteration algorithm. We find an optimal offline stationary policy and compare it with a naive policy that performs immediate scheduling irrespective of energy and channel states.

The remainder of the paper is organized as follows. In Section II, we describe the system model. In Section III, we formulate the optimization problem as an MDP and solve it using value iteration algorithm. We provide and analyze numerical results in Section IV. Finally, we give some concluding remarks and future perspectives in Section V.

II. SYSTEM MODEL

We consider a point-to-point communication over a fading channel with an energy harvesting transmitter. The transmitter

is equipped with two queues: one corresponds to a limited-capacity battery to store harvested energy from an external source and the other is a finite buffer to store data packets arriving from the upper layer. The communication is slotted into consecutive epochs of equal duration T_s . At the beginning of each time slot, scheduling decisions are made to define the number of packets to be transmitted during the slot depending on energy arrivals and data arrivals during previous slot as well as channel states at the current time. In the sequel, we describe the energy, data queue and channel models of this system.

A. Energy model

Due to the random nature of energy harvesting sources, we model the EH process as an independent identically distributed (i.i.d.) Poisson distribution with an average arrival rate λ_e . We assume that the energy arrives in multiple packets of energy units (e.u) of \mathcal{E}_U Joules (J). The received energy is stored in a battery of limited capacity B_e , and is lost when it exceeds B_e . At the beginning of time slot n , let e_n denote the harvested incoming energy (counting as a number of the energy units). Its probability distribution is given by

$$p(e_n = e) = e^{-\lambda_e} \cdot \frac{(\lambda_e)^e}{e!}.$$

We assume in this model that the processing energy is negligible compared to the transmission energy, thus the energy stored in the battery is only used for communication. We also consider the energy causality constraint where the system can only transmit if a sufficient amount of energy is available in the battery. Let b_n denote the energy level of the battery at the beginning of time slot n , $b_n \in \{0, \dots, B_e\}$, and E_n the energy consumed to send packets during time slot n , then $E_n \leq b_n \forall n$. In addition, we suppose perfect energy state information at the transmitter (ESIT).

B. Data queue model and strict delay constraint

The transmitter receives also data packets and store them for future transmission in a data buffer of size B_d packets. We model the data arrival process as an i.i.d. process following a Poisson distribution with an average arrival rate λ_d . We assume that all packets are of the same size L bits. At the beginning of time slot n , let q_n denote the queue length in the buffer, $q_n \in \{0, \dots, B_d\}$, and a_n the received packets with probability distribution

$$p(a_n = a) = e^{-\lambda_d} \cdot \frac{(\lambda_d)^a}{a!}.$$

A packet is discarded from the buffer

- if there is a **buffer overflow**, i.e., if the sum of packets in the queue and arrival packets exceeds the buffer size. In that case, we discard the arrival packets in overflow;
- if there is a **delay no-fulfillment**, i.e., it stays in the queue more than K_0 slots. This can occur if the system decides not to transmit for a long period due to energy shortage or bad channel conditions.

In order to describe the delay no-fulfillment, we need to introduce a new variable $k_i(n)$ counting the time spent in the

buffer of the i -th packet at time n . By definition, we have $k_i(n) \in \{-1, \dots, K_0\}, \forall i, k$ and $k_i(n) = -1$ for an empty space in the buffer (i.e., when the i -th packet does not exist). In Fig. 1, we provide a buffer state at time n .

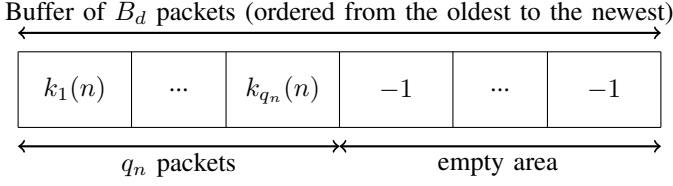


Fig. 1: Buffer configuration at slot n .

Notice that $k_j(n) \leq k_i(n), \forall i \leq j$.

C. Channel model and consumed energy

We consider a single user flat-fading channel with signal bandwidth W (Hz) and additive white Gaussian noise with power spectral density N_0 . During time slot n , the channel remains constant with complex-valued amplitude h_n , and varies independently across time slots. We define the channel gain as $x_n = |h_n|^2$. We assume $\{x_n\}_n$ is an i.i.d. process following a uniform distribution into a finite set \mathcal{X} . We also assume perfect Channel State Information at the Transmitter (CSIT).

We denote u_n ($u_n \leq q_n$) the number of packets to be transmitted during time slot n of period T_s , through the channel of gain x_n . The consumed energy to transmit these packets is expressed as an integer multiple of the energy unit. It is given by

$$E(x_n, u_n) = \left\lceil \frac{P(x_n, u_n) \cdot T_s}{\mathcal{E}_U} \right\rceil \quad (1)$$

where

$$P(x_n, u_n) = \frac{W N_0}{x_n} \left(2^{\frac{u_n L}{W T_s}} - 1 \right). \quad (2)$$

is the required power for this transmission.

III. PROBLEM FORMULATION AND RESOLUTION

Our main objective now is to ensure reliable communication by minimizing the number of discarded packets due to strict delay and buffer overflow constraints. This can be achieved by finding an optimal policy that specifies the number of packets u to be scheduled at each time slot based on the past system states and actions. The optimization problem can be formulated as MDP problem [14]. We characterize in this section the appropriate states, actions and reward of this MDP.

A. State Space

The state space \mathcal{S} is the set of $\mathbf{s} = (\mathbf{k}, b, x)$ where

- $\mathbf{k} = [k_1, \dots, k_{B_d}]$ is the vector indicating the age of each packet in the data buffer,
- b is the battery level, and
- x is the channel gain.

Notice that in the previous works [10], [11], the queue length q describes the data buffer states. In our work, q is replaced with \mathbf{k} due the strict delay constraint. In fact, q is unnecessary when \mathbf{k} is given since

$$q_n = \max \{i \mid k_i(n) \geq 0\}. \quad (3)$$

The state space is finite, and the total number of possible states is $|\mathcal{S}|$ which is upper-bounded by $(K_0 + 2)^{B_d} \cdot |B_e + 1| \cdot |\mathcal{X}|$. The state space can be significantly reduced by assuming that packets are queued in an increasing order of time spent in the buffer, i.e. $k_1(n) \geq k_2(n) \geq \dots \geq k_{q_n}(n)$. For instance, if we consider $B_d = 6, K_0 = 3, B_e = 4$ and $|\mathcal{X}| = 5$, the upper-bound is 390625 while our system only has 5250 states by removing the impossible combination of components in \mathbf{k} .

B. Action Space

The action space \mathcal{U} denotes the number of packets u that the transmitter can send during a time slot. This space is finite and the number of actions is $|\mathcal{U}| = U_0 + 1$. U_0 is the maximal value of scheduled packets. It is obtained from Eq. (1) with the maximum available power P_{\max} , the maximum capacity of the battery B_e and the best channel coefficient $x_{\max} = \max_{x \in \mathcal{X}} x$.

C. Markov Decision Process

On one hand, during time slot n , $w_n = \max(u_n, m_n)$ packets leave the buffer, either transmitted and/or discarded where u_n is the number of transmitted packets and m_n is the number of packets with delay K_0 slots in the buffer. The age of the remaining packets in the buffer is incremented by 1. Moreover, a_{n+1} new packets arrive to the buffer with age 0. Therefore, the vector \mathbf{k} can be updated from slot n to slot $n + 1$ according to the following rule.

- 1: **for** $i = 1$ **to** $q_n - w_n$ **do**
 $k_i(n + 1) = k_{w_n + i}(n) + 1$
end for
- 2: **for** $i = q_n - w_n + 1$ **to** $q_n - w_n + a_{n+1}$ **do**
 $k_i(n + 1) = 0$
end for
- 3: **for** $i = q_n - w_n + a_{n+1} + 1$ **to** B_d **do**
 $k_i(n + 1) = -1$
end for

On the other hand, during time slot n , e_{n+1} e.u are harvested and stored in the battery and E_n e.u are removed from the battery to schedule u_n packets. Therefore, at time slot $n + 1$, the battery state is updated according to

$$b_{n+1} = \min \{b_n - E_n + e_{n+1}, B_e\}. \quad (4)$$

We thus remark that \mathbf{k}_{n+1} (resp. b_{n+1}) only depends on previous state \mathbf{k}_n (resp. b_n), action u_n (resp. E_n) and external perturbation a_{n+1} (resp. e_{n+1}). Therefore, we can define $p(\mathbf{s}' | \mathbf{s}, u)$ as the transition probability to fall in the future state $\mathbf{s}' = (\mathbf{k}', b', x')$ after taking action u in the current state $\mathbf{s} = (\mathbf{k}, b, x)$. Assuming that the buffer, battery and channel

states are independent and channel states are not correlated, the transition probability satisfies the following equation.

$$p(s'|s, u) = p(k'|k, b, u).p(b'|b, x, u).p(x'), \quad (5)$$

where $p(x')$ is the distribution of the channel states, $p(k'|k, b, u)$ indicates the probability transitions between buffer states, and $p(b'|b, x, u)$ indicates the probability transitions between battery states. After tedious but simple derivations, we obtain the transitions between the buffer states and the battery states according to the following respective rules.

- 1: **if** $u > q$ **or** $k'_i > k_i + 1$ **or** $q' < q - w$ **then**
 $p(k'_i|k_i, b, u) = 0$
- 2: **else if** $k'_i \neq k_{i+u} + 1$ **and** $k_{i+u} \neq -1$ **then**
 $p(k'_i|k_i, b, u) = 0$
- 3: **else if** $k'_i > 0$ **and** $k_{i+u} = -1$ **then**
 $p(k'_i|k_i, b, u) = 0$
- 4: **else if** $q = B_d$ **and** $u \neq 0$ **and** $k'_i > 0, \forall i \in \{q - w + 1, \dots, B_d\}$ **then**
 $p(k'_i|k_i, b, u) = 0$
- 5: **else if** $q' < B_d$ **then**
 $p(k'_i|k_i, b, u) = e^{-\lambda_d} \cdot \frac{(\lambda_d)^a}{a!}$
- 6: **else**
 $p(k'_i|k_i, b, u) = 1 - Q(B_d - q + w, \lambda_d),$

and

- 1: **if** $E > b$ **then**
 $p(b'|b, x, u) = 0$
- 2: **else if** $b' < b - E$ **then**
 $p(b'|b, x, u) = 0$
- 3: **else if** $b' < B_e$ **then**
 $p(b'|b, x, u) = e^{-\lambda_e} \cdot \frac{(\lambda_e)^e}{e!}$
- 4: **else**
 $p(b'|b, x, u) = 1 - Q(B_e - b + E, \lambda_e).$

where Q is the regularized gamma function.

D. Markov Decision Problem and its Resolution

In the context of infinite-horizon MDP, we consider time-averaged cost, where at a given time slot $n \in \{0, \dots, N\}$, the system state is denoted by $\mathbf{s}_n = (\mathbf{k}_n, b_n, x_n)$ and $\mu(\mathbf{s}_n) = u_n$ is the action deciding the number of packets to be transmitted. We aim at finding the optimal policy μ^* that minimizes the average number of dropped packets. The cost function of this infinite-horizon MDP problem is given by

$$\bar{D}(\mu) = \lim_{N \rightarrow +\infty} \frac{1}{N} \mathbb{E}^\mu \left[\sum_{n=1}^N (\varepsilon_d(\mathbf{s}_n, u_n) + \varepsilon_o(\mathbf{s}_n, u_n)) \right], \quad (6)$$

where \mathbb{E} is the expectation with respect to the policy μ and where $\varepsilon_d(\mathbf{s}_n, u_n)$ is the instantaneous number of discarded packets due to delay no-fulfillment and $\varepsilon_o(\mathbf{s}_n, u_n)$ is the instantaneous number of discarded packets due to buffer overflow.

At a given slot n , when the system state is \mathbf{s}_n and the performed action is u_n , the number of discarded packets due to delay no-fulfillment is given by

$$\varepsilon_d(\mathbf{s}_n, u_n) = \begin{cases} 0 & \text{if } m_n = 0 \text{ or } m_n \leq u_n \\ m_n - u_n & \text{otherwise.} \end{cases} \quad (7)$$

The buffer overflow occurs when $q_n - w_n + a_{n+1} > B_d$, thus the number of discarded packets due to buffer overflow is obtained as follows

$$\begin{aligned} \varepsilon_o(\mathbf{s}_n, u_n) &= \sum_{a=B_d-q_n+w_n+1}^{+\infty} (q_n - w_n + a - B_d) \cdot e^{-\lambda_d} \cdot \frac{(\lambda_d)^a}{a!} \\ &= \lambda_d \cdot (1 - Q(B_d - q_n + w_n, \lambda_d)) \\ &+ (q_n - w_n - B_d) \\ &\times (1 - Q(B_d - q_n + w_n + 1, \lambda_d)). \end{aligned} \quad (8)$$

Finally, our MDP optimization problem can be stated as *Problem 1*:

$$\mu^* = \arg \min_{\mu} \bar{D}(\mu) \quad (9)$$

To solve this optimization problem, we resort to the offline dynamic programming approach using the so-called VI algorithm [14]. Exploring *a priori* knowledge of energy arrival and data arrival dynamics and channel states at the EH transmitter, the offline approach can accurately model the state transition probabilities of the MDP and provide an optimal solution. The optimal offline deterministic policy, exhibited by Algorithm 1, consists in a one-to-one mapping from the state space \mathcal{S} to the action space \mathcal{U} , performing a unique action u whenever a state s is visited.

Algorithm 1 VI algorithm

- 1: Initialization
Set $v^0(s) = 0 \forall s \in \mathcal{S}$
Fix a tolerance parameter $\epsilon > 0$
Set $n=1$
- 2: For each $s \in \mathcal{S}$ compute

$$v^n(s) = \min_{u \in \mathcal{U}} \left[c(s, u) + \sum_{s' \in \mathcal{S}} P(s'|s, u) \cdot h^{n-1}(s') \right] \quad (10)$$

$$h^n(s) = v^n(s) - v^n(s_0) \quad (11)$$

where s_0 is a fixed state chosen arbitrarily.

- 3: If $\text{sp}(v^n - v^{n-1}) < \epsilon$, where $\text{sp}(v) = \max_{s \in \mathcal{S}} v(s) - \min_{s \in \mathcal{S}} v(s)$, let π^ϵ be the resulting policy that solves equation (10), $v^\epsilon = v^n$ and stop; else set $n = n + 1$ and go to step 2.
-

IV. NUMERICAL RESULTS

We evaluate numerically the optimal policy obtained by resolving Problem 1. We consider a system as described in Section II with the following characteristics: the slot duration is $T_s = 1$ ms, the channel states x takes 5 possible values from the finite set $\mathcal{X} = \{-5.41, -1.59, 0.08, 1.42, 3.18\}$ dB with equal probabilities. The noise power spectral density is $N_0 = -87$ dBm/Hz and the allocated bandwidth is $W = 5$ MHz. Data arrivals follow a Poisson distribution with mean λ_d packets, where packets are of equal size $L = 5000$ bits. Data packets are stored in a buffer of size $B_d = 6$

packets. The maximum delay is $K_0 = 3$ (i.e., in absolute time $K_0 T_s = 3$ ms). Energy arrivals follow a Poisson distribution with mean λ_e e.u per slot, where $\mathcal{E}_U = 100$ nJ. Energy units are stored in a battery of size $B_e = 4$ e.u. The maximum available power at the transmitter is $P_{\max} = 2$ mW. According to Eq. (2), this system allows to transmit up to 8 packets per slot. Limited by the queue size and the capacity of the battery, we fix $U_0 = 6$ packets per slot.

In Fig. 2, we plot the average rate of discarded packets versus the number of iterations for evaluating the optimal policy within the VI algorithm for various energy arrival rates λ_e where the data arrival rate λ_d is fixed to 1.5. We show that the VI algorithm converges rapidly within a few hundreds iterations for most of cases. We can also notice that as λ_e increases, the average number of discarded packets considerably decreases. Indeed, when the energy available from the surrounding environment is in larger quantities, the system will be able to send more packets, reducing thus the number of discarded packets.

In Fig. 3, we display the percentage of discarded packets versus the data arrival rate λ_d for different energy arrival rates and both policies, namely the optimal one exhibited in this paper and the *naive* one which forces the transmitter to send the maximum number of packets using the available energy in the battery. As we can observe, the proposed optimal policy gives significantly better performance than the naive one in terms of percentage of discarded packets. In fact, this policy enables to adapt the transmission rate according to the channel conditions. The number of discarded packets increases when the data arrival rate λ_d increases because the buffer overflow could happen more often. On the other hand, when the energy available to scavenge is low (small λ_e), an efficient energy management becomes crucial to ensure the sustainability of the system, and the gap between both policies increases. On the contrary, when a large amount of energy is available (large λ_e), the system can survive even without controlling relevantly the energy consumption which leads to similar performance between the optimal and naive policies.

In Fig. 4, we show the percentage of discarded packets due to delay among the total number of discarded packets for different values of the energy arrival rate λ_e and the data arrival rate λ_d . As explained before, a packet can be discarded due to delay or buffer overflow. When the data arrival rate increases, the probability to discard a packet due to overflow increases, resulting in a lower contribution of the delay in discarding packets. On the other hand, when the energy rate decreases, the percentage of discarded packets due to the delay slightly increases because, in average, a packet remains more often in the buffer since there is not enough energy to transmit it. Hence, it is flushed from the buffer for latency's purpose.

In Fig. 5, we plot the average consumed energy versus the data arrival rate λ_d for different energy arrival rates λ_e . We observe that the optimal proposed policy consumes less energy while sending more packets because it adapts the number of transmitted packets per slot to the channel conditions and the

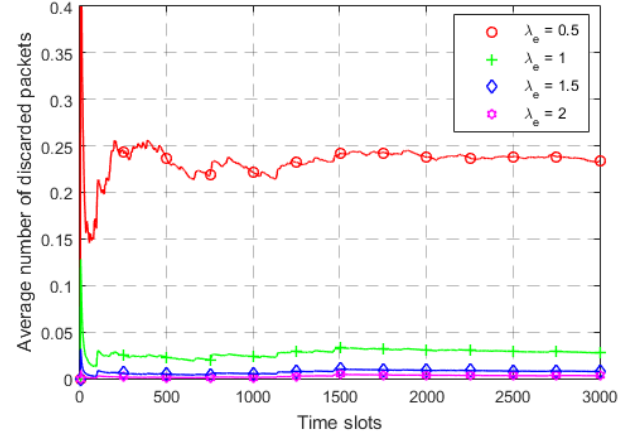


Fig. 2: Convergence analysis for the average rate of discarded packets with different energy arrival rates.

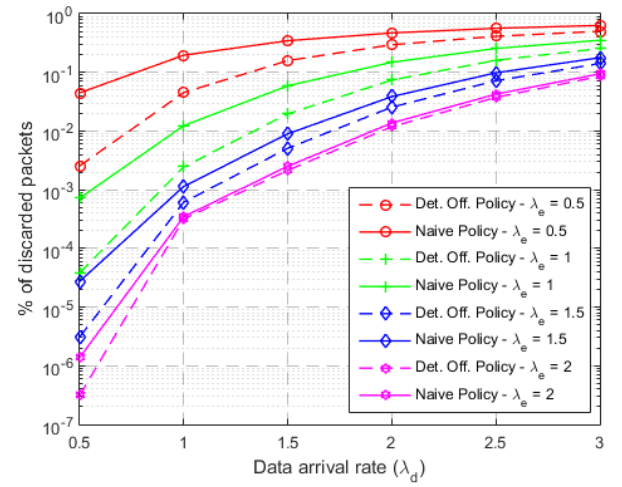


Fig. 3: Percentage of the discarded packets versus data arrival rate for different energy arrival rates.

battery state and thus, the transmission is done according to the energy it consumed.

In Fig. 6, we show the average battery state versus the packet arrival rate λ_d for different energy arrival rates λ_e . As the proposed policy offers a lower energy consumption (see Fig. 5), the battery is less used and its energy level is thus higher. This ensures a better sustainable communication with less number of discarded packets.

V. CONCLUSION

We have addressed resource scheduling problem under energy harvesting capabilities with strict delay constraint. More precisely, we have solved the packet loss optimization problem using MDP framework and dynamic programming techniques. The optimal policy adjusted the number of transmitted packets according to the channel conditions and the available energy in the battery, such that the number of discarded packets

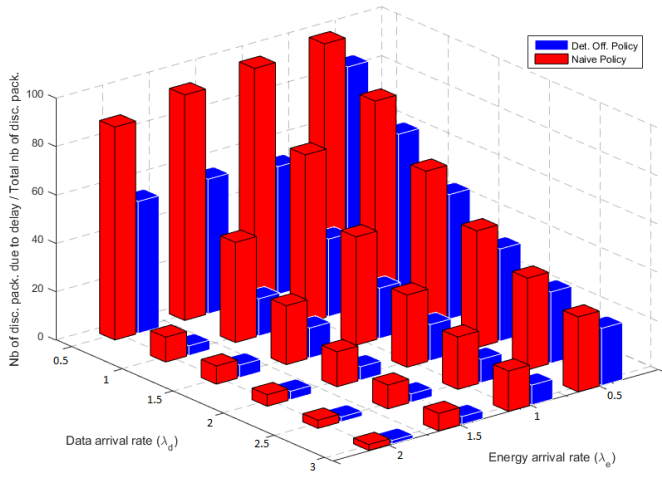


Fig. 4: Percentage of the discarded packets due to delay versus data arrival rate and energy arrival rate.

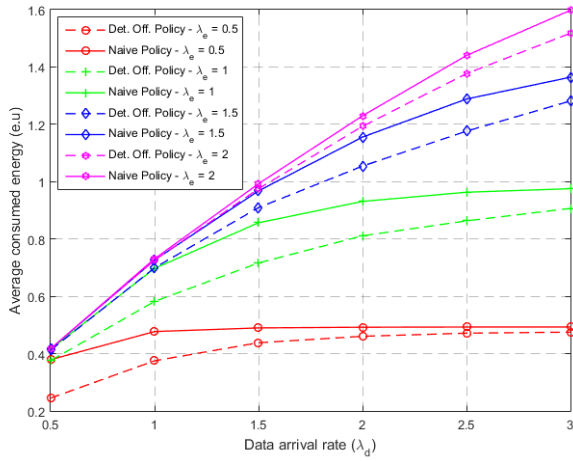


Fig. 5: Average consumed energy versus data arrival rate for different energy arrival rates.

is minimized. As an extension to this work, we aim i) to focus on online programming instead of offline, ii) to include offloading capabilities, where the system can choose to execute packets locally, offload it to nearby servers or base stations having more resources according to the system and channel conditions.

REFERENCES

- [1] S. Ulukus, A. Yener, E. Erkip, O. Simeone, M. Zorzi, P. Grover and K. Huang, "Energy Harvesting Wireless Communications: A Review of Recent Advances," *IEEE Journal on Selected Areas in Communications*, vol. 33, no. 3, pp. 360–381, March 2015.
- [2] M. L. Ku, W. Li, Y. Chen and K. J. R. Liu, "Advances in Energy Harvesting Communications: Past, Present, and Future Challenges," *IEEE Communications Surveys & Tutorials*, vol. 18, no. 2, pp. 1384–1412, February 2016.
- [3] O. Ozel, K. Tutuncuoglu, J. Yang, S. Ulukus and A. Yener, "Transmission with Energy Harvesting Nodes in Fading Wireless Channels: Optimal Policies," *IEEE Journal on Selected Areas in Communications*, vol. 29, no. 8, pp. 1732–1743, September 2011.

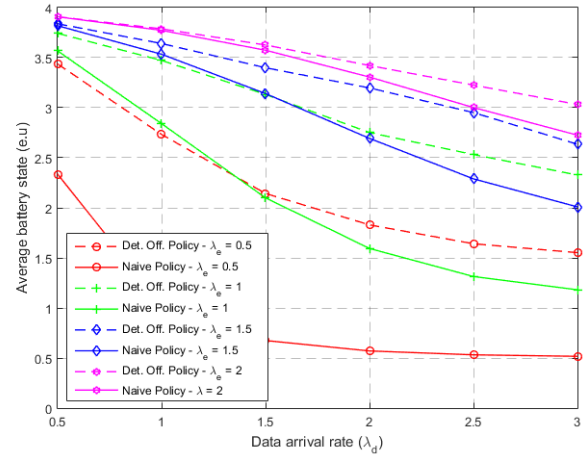


Fig. 6: Average battery state versus data arrival rate for different energy arrival rates.

- [4] B. Varan and A. Yener, "Energy Harvesting Communications with Energy and Data Storage Limitations," *IEEE Global Communications Conference (GLOBECOM)*, 2014.
- [5] D. Gunduz, K. Stamatiou, N. Michelusi and M. Zorzi, "Designing Intelligent Energy Harvesting Communication Systems," *IEEE Communications Magazine*, vol. 52, no. 1, pp. 210–216, January 2014.
- [6] W. Wu, J. Wang, X. Wang, F. Shan and J. Luo, "Online Throughput Maximization for Energy Harvesting Communication Systems with Battery Overflow," *IEEE Transactions on Mobile Computing*, vol. 16, no. 1, pp. 185–197, January 2017.
- [7] B. T. Bacinoglu, E. U. Biyikoglu and C. E. Koksal, "Finite-Horizon Energy Efficient Scheduling with Energy Harvesting Transmitters over Fading Channels," *IEEE Transactions on Wireless Communications*, vol. 16, no. 9, pp. 6105–6118, September 2017.
- [8] A. O. Isikman, M. Yuksel and D. Gunduz, "A Low Complexity Policy for Outage Probability Minimization with EH Transmitter," *IEEE Communications Letter*, vol. 21, no. 4, pp. 917–920, April 2017.
- [9] J. Liu, H. Dai and W. Chen, "Delay Optimal Scheduling for Energy Harvesting based Communications," *IEEE Journal on Selected Areas in Communications*, vol. 33, no. 3, pp. 452–466, March 2015.
- [10] R. A. Raghuvir and D. Rajan, "Delay Bounded Rate and Power Control in Energy Harvesting Wireless Networks," *IEEE Wireless Communications and Networking Conference (WCNC)*, 2011.
- [11] L. Lei, Y. Kuang, X. Shen, K. Yang, J. Qiao and Z. Zhong, "Optimal Reliability in Energy Harvesting Industrial Wireless Sensor Networks," *IEEE Transactions on Wireless Communications*, vol. 15, no. 8, pp. 5399–5413, August 2016.
- [12] I. Ahmed, K. T. Phan and T. L. Ngoc, "Optimal Stochastic Power Control for Energy Harvesting Systems with Statistical Delay Constraint," *IEEE Journal on Selected Areas in Communications*, vol. 34, no. 12, pp. 3512–3527, December 2016.
- [13] I. Fawaz, P. Ciblat and M. Sarkiss, "Energy Minimization based Resource Scheduling for Strict Delay Constrained Wireless Communications," *IEEE Global Conference on Signal and Information Processing (GLOBALSIP)*, 2017.
- [14] D. P. Bertsekas, "Dynamic Programming and Optimal Control," Vol.1, Third Edition.