



HAL
open science

Moving Sources Detection Algorithm for Radiation Portal Monitors Used in a Linear Network

Romain Coulon, Vladimir Kondrasovs, Karim Boudergui, Stéphane Normand

► **To cite this version:**

Romain Coulon, Vladimir Kondrasovs, Karim Boudergui, Stéphane Normand. Moving Sources Detection Algorithm for Radiation Portal Monitors Used in a Linear Network. *IEEE Transactions on Nuclear Science*, 2014, 61 (4), pp.2189 - 2194. 10.1109/TNS.2014.2299872 . cea-01830910

HAL Id: cea-01830910

<https://cea.hal.science/cea-01830910v1>

Submitted on 3 Jan 2019

HAL is a multi-disciplinary open access archive for the deposit and dissemination of scientific research documents, whether they are published or not. The documents may come from teaching and research institutions in France or abroad, or from public or private research centers.

L'archive ouverte pluridisciplinaire **HAL**, est destinée au dépôt et à la diffusion de documents scientifiques de niveau recherche, publiés ou non, émanant des établissements d'enseignement et de recherche français ou étrangers, des laboratoires publics ou privés.

Moving Sources Detection Algorithm for Radiation Portal Monitors Used in a Linear Network

Romain Coulon, Vladimir Kondrasovs, Karim Boudergui, and Stéphane Normand

Abstract—To monitor radioactivity passing through a vehicle such as a pedestrian, a car, a train or a truck, Radiation Portal Monitors (RMP) are commonly employed. These detection systems consist of a large volume detector set close to the potential source path. An alarm is then triggered when the signal rises over a threshold initially estimated in view of the natural background signal. The approach developed in this work makes use of several detectors in a network along the source path. The correlation detection approach is elaborated to take into account the temporal periodicity of the signals taken by all distributed sensors as a whole. This new detection method is then not based only on counting statistics but also on the temporal series analysis. Therefore, a specific algorithm has been developed in our laboratory for this security application and shows a significant improvement, especially in terms of detection probability increase and false alarm reduction. This paper presents the theoretical approach and promising results obtained by simulation.

Index Terms—Algorithm, detection, filter, instrument, measurement, monitor, moving, nuclear, radiation, radioactive, safeguard, security, signal processing, source, time series analysis.

I. INTRODUCTION

MONITORING a moving source is currently required for numerous nuclear security applications. Nuclear materials could be contained into a pedestrian, a car, a truck, or a train and could also be disseminated into a water pipe or an air vent. The detection is challenging due to the source motion when passing by the probe.

A. State of the Art

To optimize the detection efficiency, a large volume sensor is required. Such systems are proposed by a large number of industrial suppliers [1], [2]. Advanced RPMs, additionally, are currently developed in research laboratories, exploiting the information contained into the deposited energy distribution given by the large plastic scintillator [3]–[5]. Time series analysis of the counting signal is also studied to improve the detection of a single RMP [6], [7]. The work developed in this paper deals with time series analysis applied to RPMs in linear network.

The authors are with the CEA, LIST, Laboratoire Capteurs et Architectures Électroniques and Laboratoire, F-91191 Gif-sur-Yvette, France (e-mail: romain.coulon@cea.fr; vladimir.kondrasovs@cea.fr; karim.boudergui@cea.fr; stephane.normand@cea.fr).

B. Conventional Approach

Conventional RPMs are implemented with a single channel and gross count rate continuous measurements. Detection is commonly done from a given channel by a threshold. The threshold is calculated according to the background fluctuation band on the backed level estimated with a Poisson counting assumption and an acceptable false alarm probability *FAP*. Counts from background N_b are considered as a Poisson process. Its expectation and its variance are a function of background efficiency ε_b , background intensity I_b around the detector and elementary counting time Δt as described in Eq. (1).

$$\mathbb{E}(N_b) = \text{Var}(N_b) = \varepsilon_b I_b \Delta t \quad (1)$$

An decision threshold DT is determined by the statistical standard deviation σ and a coverage factor k (set in regards of the maximum acceptable *FAP*).

$$DT = k\sigma(N_b) = k\sqrt{\varepsilon_b I_b \Delta t} \quad (2)$$

Counts from signal N_s are similarly considered as a Poisson process. Its expectation and its variance are the functions of the source efficiency ε_s , the source activity A_s and elementary counting measurement time Δt as described in Eq. (3).

$$\mathbb{E}(N_s) = \text{Var}(N_s) = \varepsilon_s A_s \Delta t \quad (3)$$

The detection test consists in triggering the alarm if the condition $N_s > DT$ becomes true. The ratio N_s/DT is therefore proportional to the source efficiency and activity, proportional to the square root of the elementary counting time and inversely proportional to the square root of the background efficiency and intensity as shown in the Eq. (4).

$$\frac{N_s}{DT} \propto \frac{\varepsilon_s A_s}{\sqrt{\varepsilon_b I_b}} \sqrt{t} \quad (4)$$

The background efficiency increases proportionally to detector volume. The source efficiency converges to an asymptotic value as the detector volume increases. An optimum in terms of signal to noise ratio is calculated (by MC particles transport code for example) as a function of the experimental conditions (nature of the source, background, vehicle...). Consequently, optimizing the design of the sensor comes first in the issue to be addressed.

The counting time has to be short compared to the speed of the source. In practice, it can only be optimized by making the

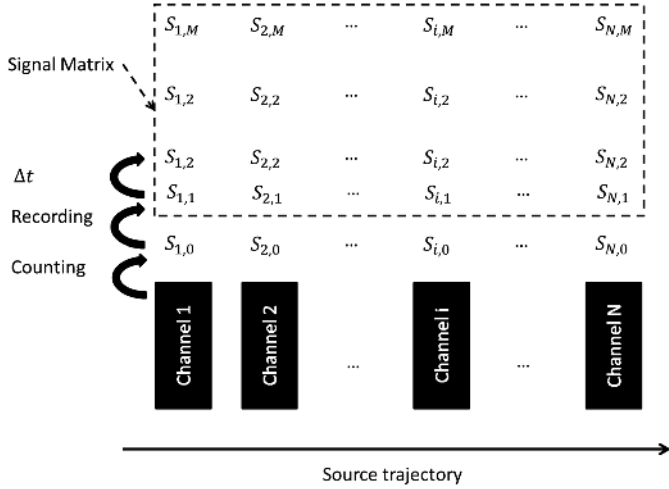


Fig. 1. Principle of the signal recording.

considered vehicle stop in front of the system. Such a method could disturb the traffic flux; it is therefore undesirable.

C. Concept of the Correlation Approach

Another way of improvement is proposed in this work: it relies upon several portal units set along the source path. As a result, the detection probability is increased and the network structure could provide us with additional type of information about the signal thanks to the temporal correlation between sensors. Instead of triggering on the independent signal amplitude, a periodicity into the overall signal is searched for. An improvement in detection ability is suggested. Moreover, this new approach could be more reliable as far as the self-shielding issues are concerned.

Past studies have been carried out for the source tracking using matrix sensor networks. MCNC calculations and Bayesian approach allowing sources tracking without any knowledge of the source trajectory have been developed [8]. An algorithm based on triangulation has been studied for source localization purposes [9]. These methods are optimized for 2-D problems and are therefore unsuited for our situation where the source trajectory is well known (1-D). Faster algorithms have then been developed but these require an accurate knowledge of the source velocity which is not usually the case for security problematic [10], [11]. Fusion of correlated decisions is another path to address this issue. Local decision from multiples sensors are sending to a fusion center and correlation test is done (CUMSUM test or test based on copula theory) [12], [13].

The next parts of this paper present a detection method based on temporal series analysis associated with linear sensor network without taking in account the local decision information. It allows a continuous and fast detection without accurate knowledge of the source velocity. The method is described and a comparative study with conventional detection method is presented.

II. METHODS

The radioactive source is passed in front of the N successive channels. Counts are recorded to a memory corresponding to every channel (see Fig. 1).

The detection filter and measurement are processed with the following steps.

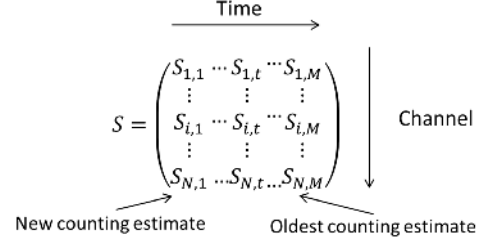


Fig. 2. Formulation of the signal matrix.

A. Memory Management

At the end of the counting time Δt , a “First In First Out” (FIFO) list is recorded at every channel. After, the last counting is recorded into the first values of the memories. Counting values are noted $S_{i,t}$ where i is the channel number and t the time step at the memory level (see Fig. 2).

B. Correlation Vector Calculation

A temporal correlation vector R_t is calculated as a function of delay times t between sensors. The explicit formula is presented in Eq. (5).

$$R_t = \prod_{i=1}^N S_{i,(N-i)t+1} \quad (5)$$

With $t = \{1, 2, \dots, N_R\}$ and $N_R = (M - 1)/(N - 1)$.

C. Determination of the Decision Threshold

A decision threshold is calculated using the mean of the static product \bar{R} (Eq. (6)) and its associated empirical standard deviation $\sigma(\bar{R})$ (Eq. (7)).

$$\bar{R} = \frac{1}{M} \sum_{t=1}^M \prod_{i=1}^N S_{i,t} \quad (6)$$

$$\sigma(\bar{R}) = \sqrt{\frac{1}{M} \sum_{t=1}^M (\bar{R} - S_{i,t})^2} \quad (7)$$

The threshold estimation could be impacted by the source signal itself. To avoid this phenomenon the median could be used instead of the mean for the static product estimation. Another empirical standard deviation is recalculated after rejection of extreme values has been performed.

D. Detection Test

A detection test consists in determining if a correlation between the channels is considered relevant. The maximum of correlation is searched into the vector R_t and a test is performed by comparison of this value to the static product and its standard deviation. The parameter K_2 is the coverage factor set in regards of the acceptable *FAP*. This parameter can be considered as the threshold set proportionally the fluctuation level of the correlation product.

$$\max(R_t) > \bar{R} + K_2 \sigma(\bar{R}) \quad (8)$$

The system is able to detect all source motions as long as the speed can be considered constant and comprise into the delay

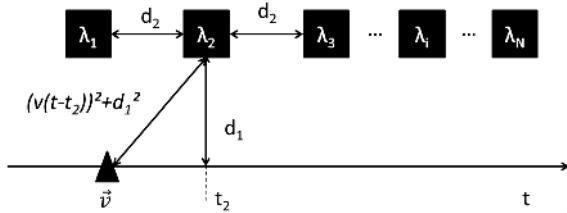


Fig. 3. Geometrical model.

time scan range. The system is also able to assure a reliable detection behavior during the evolution of the background signal. This approach is therefore immune to self-shielding effect.

E. Speed Estimation

If detection has occurred, the time period T corresponding to the maximum of vector R_t could give, using the distance between sensors d , an approximation of the source speed V . The accuracy in this speed estimation is linked to the time sampling Δt of the detection system.

$$T = \{t; \max(R_t)\} \quad (9)$$

$$V = \frac{d}{T\Delta t} \quad (10)$$

F. Signal Simulation

The signal is simulated by the superimposition of a constant background intensity λ_b and a source intensity λ_s (equal to the count rate in front of a detector). A geometrical model allows for the simulation of the global intensity $\lambda_i(t)$ of a channel i as a function of time t (see Fig. 3).

The intensity is derived as a function of the distance between probes d_2 , the distance to the source track line d_1 and the source velocity v (see Eq. (11)–(12)).

$$\lambda_{i,t} = \frac{\lambda_s d_1^2}{d_1^2 + v^2(t - t_i)^2} + \lambda_b \quad (11)$$

$$t_i = t_{i-1} + d_2 v \quad (12)$$

The inhomogeneous Poisson process is generated for each channel as illustrated in Fig. 4. Pulse trains are generated using the pseudo-random function `rand` of Matlab into the exponential probability function modeling the pulse-time separation as a function of the signal intensity $\lambda_{i,t}$.

The counts are integrated during an elementary counting time to obtain three independent count signals as presented in Fig. 5.

The signal is then characterized by the background intensity λ_b , the source intensity λ_s , the source velocity v , the distance between the source and the detector line path d_1 , and the corresponding number of samples separating detector to each other's Δn , as.

$$\Delta n = \frac{d_2}{v\Delta t} \quad (13)$$

III. RESULTS

A. Detection Filter Testing

The correlation production R_t is then calculated for several delay times as described in Eq. (5) and shown in the Fig. 6.

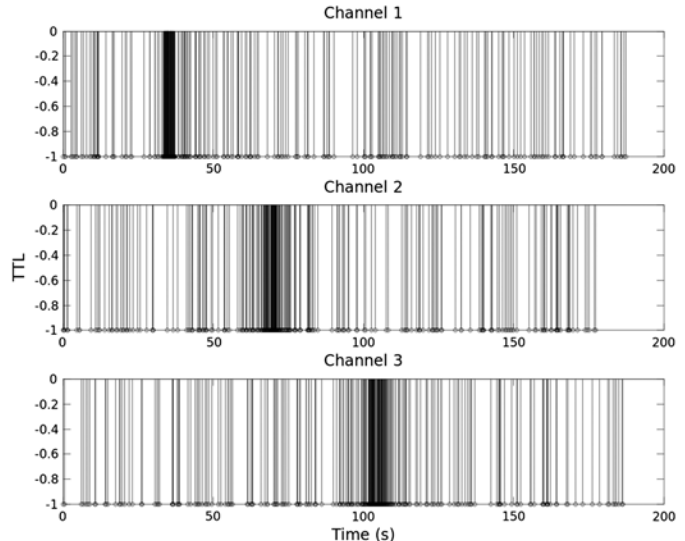


Fig. 4. Example of pulses arrivals from 3 sensors while a source is passing.

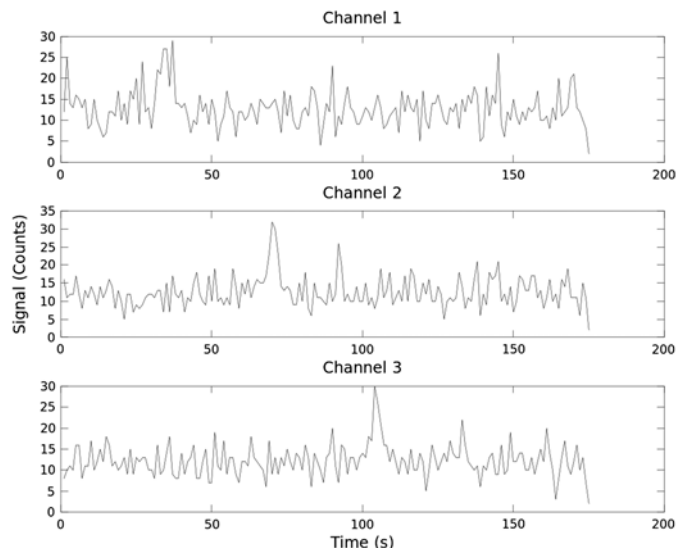


Fig. 5. Simulated counts signal from 3 sensors while a source is passing.

The detection threshold (dash line) is calculated in regards to the signal correlation product fluctuations (see Eq. (6)–(8)). In comparison to Fig. 5 (same displayed signals) obvious improvements in the signal to noise ratio are noticed when using the correlation product estimator.

To evaluate the performance of this scheme, the following detection algorithm configurations are simulated:

- The first one is the conventional method described in Eq. (1)–(3) for a sensor network from 1 to 5 units. Detection occurs if at least one of the signals falls above the threshold.
- The second one is the time correlation algorithm as described in Eq. (5)–(8) with a sensor network of 1 to 5 units.

B. First Results

To evaluate FAP during the potential passage of the source, constant signals are injected ten thousand times during an interval of $4\Delta n$ (corresponding to the velocity of the potential source used for DP calculation). This sequence is then generated 1.10^4 times with an elementary sampling time of 0.1 second.

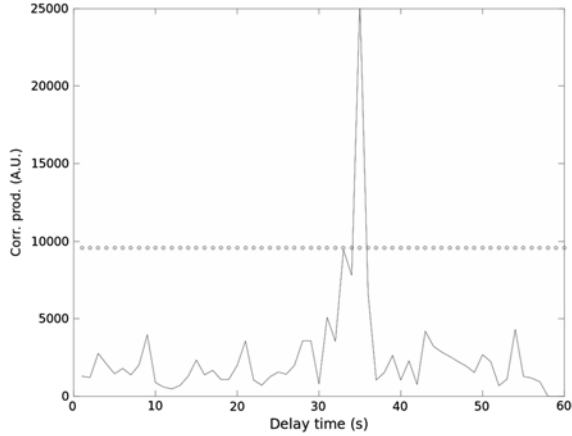


Fig. 6. Correlation production as a function of the delay time during the pass of a radioactive source.

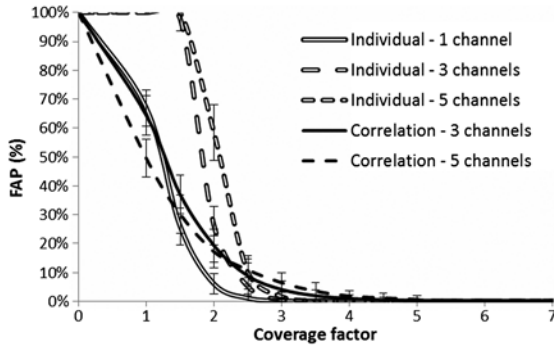


Fig. 7. *FAP* as a function of coverage factor for the individual detection filter (double line) and the correlation detection filter (single line).

The *FAP* is estimated by the number of detection occurring n_d divided to the number of generated sequences N (Eq. (14)). The associated statistical error is shown in Eq. (15).

$$FAP = \frac{n_d}{N} \quad (14)$$

$$\sigma(FAP) = \frac{\sqrt{n_d}}{N} \quad (15)$$

The *FAP* evolution as a function of coverage factor K_2 is shown in Fig. 7 for the two detection filters.

The *FAP* distribution is completely different between the individual and the correlation detection methods. Signal from the source ($\lambda_s = 12$ cps, $\lambda_b s = 20$ cps, $v = 7$ m.s⁻¹ $d_1 = 3$ m) is then injected ten thousand times to estimate the detection probability *DP* (see Eq. (16), (17)).

$$DP = \frac{n_d}{N} \quad (16)$$

$$\sigma(DP) = \frac{\sqrt{n_d}}{N} \quad (17)$$

Fig. 8 shows the *DP* as a function of the coverage factor for both detection filters.

The *DP* distribution for the correlation filter is smoother than the statistical one. The detection probability from source *SDP* is defined as the difference between the *DP* and the *FAP*, which

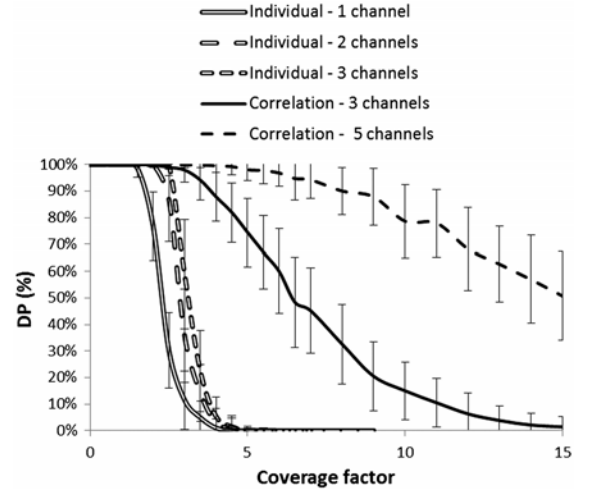


Fig. 8. *DP* as a function of coverage factor for the individual detection filter (double line) and the correlation detection filter (single line).

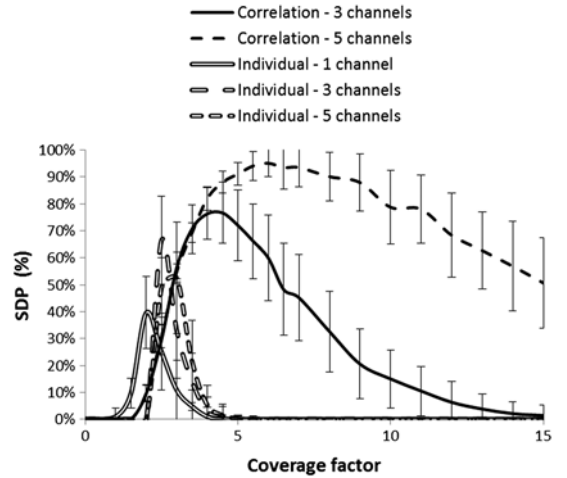


Fig. 9. *SDP* as a function of coverage factor for a signal of 12 cps and a baseline background of 20 cps.

is a satisfactory indicator performance (see Eq. (18), (19)).

$$SDP = DP - FAP \quad (18)$$

$$\sigma(SDP) = \sqrt{\sigma^2(DP) + \sigma^2(FAP)} \quad (19)$$

The *SDP* evolution as a function of the coverage factor is presented in Fig. 9.

It can be seen that the optimal coverage factor is different between the two detection methods and in regards to the number of used channels. In this example, the correlation method clearly shows a significant detection probability improvement in comparison with the individual statistical threshold method.

C. Impact of Parameters

When an increase of the radioactive source speed occurs, the *SDP* decreases in the same manner for both detection filter methods (see Fig. 10).

The distance between detectors does not impact the individual detection but could impact the correlation detection. One

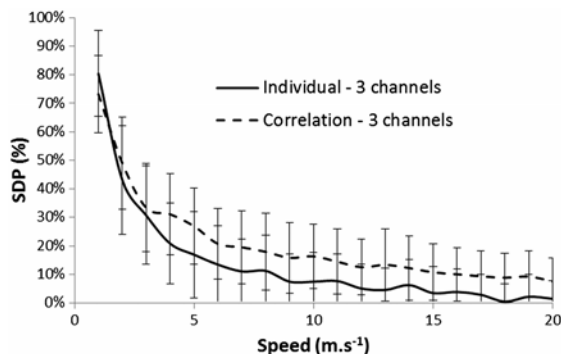


Fig. 10. SDP as a function of the source speed for a signal of 12 cps, a baseline background of 20 cps, distance between detector of 3 m, a coverage factor of 3 for the individual detection, and a coverage factor of 7 for the correlation detection.



Fig. 11. RPMs network prototype showing three long detection units and a small control unit.

must therefore ensure that this distance is long enough within the speed range at hand.

D. Realization

A prototype system of the RPMs network is under development in our laboratory in the context of the SECUR-ED European project for urban mass transportation [14].

Each sensor unit is composed of two plastic scintillation detectors coupled to fast linear focused 12 stages PMT. Scintillators are EJ-200 produced by Eljen Technology with the dimensions $100 \times 100 \times 1000$ mm. Data acquisition electronics (DAQ) have been developed by CEA and an embedded video camera to record movies of the suspect object has also been implemented [15], [16].

The DAQ is made of a compact set including a DC module providing power supply to the other modules (5 W), a Field Programmable Gate Array (FPGA) board and a High Voltage board for the 2 PMTs.

The FPGA card aims at digitalizing the signal directly from the detector anode signal. Four shifted ADC with

200 Msample.s⁻¹ are used to reach the 800 MHz sampling frequency.

The software used in this system is based on a client/server model. The server software aims at managing and collecting data from sensor units, saving them into a file and sending them to the connected client.

The client can be a portable computer (PC) based near the control unit or deported to a control room. A standard network is used to establish the connection and to communicate.

The server can collect all data every 100 ms from every sensor unit, perform the signal processing and send automatically an alarm in case of the radioactive source detection.

IV. DISCUSSION

The correlation of network portal monitor signals forms a promising approach for moving source detection applications. The distance between probes has to be carefully set by the user into the network. Adding a smoothening stage is a path for improvement. Future work will therefore approach by coupling time analysis detection with an upstream adaptive smoother [17].

Because they do not scan the same type of information, the conventional and the correlation methods are not antagonistic but complement each other. We shall therefore conduct a study about the combination of both approaches.

Another way of improvement lies within the analysis of the evolution in the temporal profile of the measurement period. The exploitation of this time delay evolution profile is the next step in detection enhancement allowed by correlation approach.

V. CONCLUSION

The detection of moving radioactive sources constitutes a challenge for nuclear security applications. Processing of the signal given by a RPM network has been studied. An algorithm allowing detection based on the time correlation between channels has been developed. A significant detection probability improvement has been shown by simulation study of RPM signals.

This preliminary result proves that time correlation approach is an innovative solution for moving source detection. Further improvements are envisaged on the basis of this algorithm, notably by coupling with an upstream adaptive smoother, coupling with the conventional individual filter, and time delay evolution profile approach.

This algorithm will be implemented into a prototype and experimentally tested. A demonstration will be conducted during the SECUR-ED project demonstration, in order to verify compliance with international standards ANSI N42.35 [18].

ACKNOWLEDGMENT

The authors would like to thank J. Dumazert for his help in writing this paper.

REFERENCES

- [1] "Radiological control of vehicle load," SAPHYMO Technical file 29294 835 EN, 2011 [Online]. Available: <http://www.saphymo.fr>
- [2] "RADOS DnD-Portal," MIRION Technologies Technical file, 2010 [Online]. Available: <https://www.mirion.com>

- [3] L. J. Kangas, P. E. Keller, E. R. Siciliano, R. T. Kouzes, and J. H. Ely, "The use of artificial neural networks in PVT-based radiation portal monitors," *Nucl. Instrum. Methods Phys. Res.*, vol. A587, pp. 398–412.
- [4] R. Hevener, M.-S. Yim, and K. Baird, "Investigation of energy windowing algorithms for effective cargo screening with radiation portal monitors," *Radiation Measur.*, 2013, In Press.
- [5] R. C. Runkle, M. F. Tardiff, K. K. Anderson, D. K. Carlson, and L. E. Smith, "Analysis of spectroscopic radiation portal monitor data using principal components analysis," *IEEE Trans. Nucl. Sci.*, vol. 53, no. 3, pp. 1418–1423, 2004.
- [6] S. M. Robinson, S. E. Bender, E. L. Flumerfelt, C. A. Lopresti, and M. L. Woodring, "Time series evaluation of radiation portal monitor data for point source detection," *IEEE Trans. Nucl. Sci.*, vol. 56, no. 6, pp. 3688–3693, 2009.
- [7] R. B. Vilim, R. Klann, C. Fink, C. Campos, and T. Medley, "Sensitivity improvement in low-profile distributed detector systems for tracking sources in transit," in *Proc. IEEE Conf. Technol. Homeland Security*, 2007, pp. 174–179.
- [8] S. Brennan, A. Mielke, and D. Torney, "Radioactive source detection by sensor networks," *IEEE Trans. Nucl. Sci.*, vol. 52, no. 3, pp. 813–819, 2005.
- [9] J.-C. Chin, N. Rao, D. Yau, M. Shankar, Y. Hou, J. Hou, S. Srivathsan, and S. Iyengar, "Identification of low-level point radioactive source using a sensor network," *AMC Trans. Sensor Netw.*, vol. 7, no. 3, pp. 21:1–21:35, Sep. 2010.
- [10] R. Nemzek, J. Dreicer, D. Torney, and T. Warnock, "Distributed sensor networks for detection of mobile radioactive sources," *IEEE Trans. Nucl. Sci.*, vol. 51, no. 4, pp. 1693–1700, 2004.
- [11] D. Stephens and A. Peurrung, "Detection of moving radioactive sources using sensor networks," *IEEE Trans. Nucl. Sci.*, vol. 51, no. 5, pp. 2273–2278, 2004.
- [12] L. Quian, J. Fuller, and I. Chang, "Quickest detection of nuclear radiation using a sensor network," in *Proc. IEEE Conf. Technol. Homeland Security*, 2012, pp. 648–653.
- [13] A. Sundaresan, P. K. Varshney, and N. S. V. Rao, "Distributed detection of a nuclear radioactive source using fusion of correlated decisions," in *Proc. Int. Conf. Infor. Fusion*, 2007, pp. 1–7.
- [14] K. Boudergui, V. Kondrasovs, R. Coulon, G. Corre, and S. Normand, "New monitoring system to detect a radioactive material in motion," in *Proc. ANIMMA*, 2013.
- [15] "EJ-200 plastic scintillator," Eljen Technology [Online]. Available: <http://www.eljentechnology.com>
- [16] C. Carasco, C. Eleon, B. Perot, K. Boudergui, V. Kondrasovs, G. Core, S. Normand, G. Sannié, R. Woo, and J.-M. Bourbotte, "Data acquisition and analysis of the UNCOSS underwater explosive neutron sensor," in *Proc. ANIMMA*, 2013.
- [17] V. Kondrasovs, R. Coulon, and S. Normand, "An adaptive smoother for counting measurements," in *Proc. ANIMMA*, 2013.
- [18] IEEE, "American national standard for evaluation and performance of radiation detection portal monitors for use in homeland security," ANSI 42.35, 2006.