



HAL
open science

Universality in W +Multijet Production

Z. Bern, L. J. Dixon, F. Febres Cordero, S. Hoeche, H. Ita, D. A. Kosower, D. Maitre, K. J. Ozeren

► **To cite this version:**

Z. Bern, L. J. Dixon, F. Febres Cordero, S. Hoeche, H. Ita, et al.. Universality in W +Multijet Production. 2016. cea-01303689v1

HAL Id: cea-01303689

<https://cea.hal.science/cea-01303689v1>

Preprint submitted on 18 Apr 2016 (v1), last revised 19 Oct 2022 (v2)

HAL is a multi-disciplinary open access archive for the deposit and dissemination of scientific research documents, whether they are published or not. The documents may come from teaching and research institutions in France or abroad, or from public or private research centers.

L'archive ouverte pluridisciplinaire **HAL**, est destinée au dépôt et à la diffusion de documents scientifiques de niveau recherche, publiés ou non, émanant des établissements d'enseignement et de recherche français ou étrangers, des laboratoires publics ou privés.

Universality in W +Multijet Production

Z. Bern^a, L. J. Dixon^b, F. Febres Cordero^c, S. Höche^b, H. Ita^d, D. A. Kosower^e, D. Maître^f and K. J. Ozeren^a

^aDepartment of Physics and Astronomy, UCLA, Los Angeles, CA 90095-1547, USA

^bSLAC National Accelerator Laboratory, Stanford University, Stanford, CA 94309, USA

^cDepartamento de Física, Universidad Simón Bolívar, Caracas 1080A, Venezuela

^dPhysikalisches Institut, Albert-Ludwigs-Universität Freiburg, D-79104 Freiburg, Germany

^eInstitut de Physique Théorique, CEA-Saclay, F-91191 Gif-sur-Yvette cedex, France

^fDepartment of Physics, University of Durham, Durham DH1 3LE, UK

BLACKHAT *Collaboration*

We study W -boson production accompanied by multiple jets at 7 TeV at the LHC. We study the jet-production ratio, of total cross sections for $W + n$ - to $W + (n-1)$ -jet production, and the ratio of distributions in the total transverse hadronic jet energy H_T^{jets} . We use the ratios to extrapolate the total cross section, and the differential distribution in H_T^{jets} , to $W + 6$ -jet production. We use the BLACKHAT software library in conjunction with SHERPA to perform the computations.

1 Introduction

The search for physics beyond the Standard Model relies on quantitative theoretical calculations of known-physics backgrounds. Uncovering signals of new physics requires a good quantitative understanding of the backgrounds as well as the corresponding theoretical uncertainties. The challenge of performing the required theoretical calculations increases with the increasing jet multiplicities used in many search strategies. We are thus encouraged to look for features of the relevant Standard-Model processes that can simplify calculations at higher multiplicities.

In this contribution, we study one of the benchmark Standard-Model processes, production of a W electroweak vector boson accompanied by multiple jets. The short-distance matrix element can be computed systematically in perturbative QCD. A leading-order (LO) calculation, however, leaves a strong dependence on the renormalization and factorization scales introduced in order to define the coupling α_s and the parton distribution functions (PDFs). This unphysical dependence becomes stronger with an increasing number of accompanying jets. A next-to-leading order (NLO) calculation is required to obtain a quantitatively reliable prediction. We expect such predictions to be accurate to 10–15%. Future improvements to experimental uncertainties will demand that theorists go to yet higher order in the perturbative expansion.

With the BLACKHAT software library [1], building on the progress in NLO calculations in recent years [2, 3, 4, 5, 6, 7, 8, 9, 10], we are able to perform high-multiplicity calculations. The software library supplies one-loop amplitudes, using on-shell methods. In this approach, the

amplitude is written as a sum over known integrals,

$$\text{Amplitude} = \sum_{j \in \text{Basis}} c_j \text{Int}_j + \text{Rational}, \quad (1)$$

where the integrals are the usual box, triangle, and bubble one-loop integrals. The integrals coefficients c_j as well as the additional rational terms are rational functions of *spinor* variables. They are built out of Lorentz-invariant bilinear products of spinors. The external momenta are quadratic functions of these spinor variables, and Lorentz invariants are in turn quadratic functions of Lorentz-invariant spinor products. The BLACKHAT library embodies a numerical implementation of on-shell methods, and the unitarity method in particular. The NLO calculation as a whole, including phase-space generation, multichannel integration, and subprocess management, is managed by SHERPA [11]. In addition, the real-emission contributions, with subtractions according to the Catani–Seymour scheme [12] as modified by an α_{dipole} cut-off parameter [13], are produced using the COMIX library [14] (itself a part of SHERPA).

2 n -Tuples

While high-multiplicity calculations have become feasible with this technology, they are still complex and do require considerable amounts of computer time. This is particularly true for the calculation of $W + 4$ - and $W + 5$ -jet production. There are many different contributions — different subprocesses, leading color vs. subleading color, etc. — to track and manage, so that running a calculation requires much more human effort as well as computer time. With a traditional set up, the whole calculation would need to be re-run to study scale dependence or to compute a new distribution. Even worse, the whole calculation would have to be rerun many times in order to estimate the uncertainty due to PDFs.

The computational effort is overwhelmingly dominated by the squared matrix elements, whether virtual or real-emission. The computation of additional observables or differential distributions is relatively cheap. The same would be true of results for different choices of renormalization or factorization scales $\mu_{\text{R,F}}$, and for different PDFs, were we to record the terms within the matrix element that have different dependences on these quantities.

These considerations motivate us to recycle the matrix elements rather than recomputing them. We compute the matrix elements once, saving phase-space configurations along with the weights, split up into the coefficients of the different functional dependences on $\mu_{\text{R,F}}$ and the PDFs [15]. We save this information as ROOT n -tuple files. Different types of contributions to an NLO cross section — the Born terms, virtual corrections, subtracted real-emission corrections, and integrated-subtraction terms — are saved in separate files. Each analysis — computing a new distribution, or assessing the scale dependence — can then be done with a lightweight code (in C++, ROOT, Python, ...).

As a bonus, these n -tuples can be distributed to experimenters, who can perform their own analyses. The only real restriction is to a preselected set of jet algorithms and to a minimal value of the jet $p_{\text{T}}^{\text{min}}$ cut. The n -tuples we have produced to date allow for the use of common LHC algorithms (SISCone, k_{T} , and anti- k_{T} , with $R = 0.4, 0.5, 0.6, 0.7$). The remaining cuts — jet, lepton, or photon minimum p_{T} cuts, rapidity cuts — can be tightened, or additional cuts can be introduced. Of course, if the additional cuts are very tight, the n -tuple statistics of a calculation will suffer, and it would be better to create a special set of n -tuples for the tighter cuts. We have made n -tuples for $W, Z + \leq 4$ jets and for four-jet production available, and diphoton+dijet n -tuples (both for generic cuts and a special set for VBF cuts) will follow soon.

3 Jet-Production Ratios

The transverse momentum distributions in $W + 4$ - and $W + 5$ -jet production are shown in fig. 2 in ref. [16] and fig. 6 in ref. [17] respectively. The calculations show greatly reduced scale

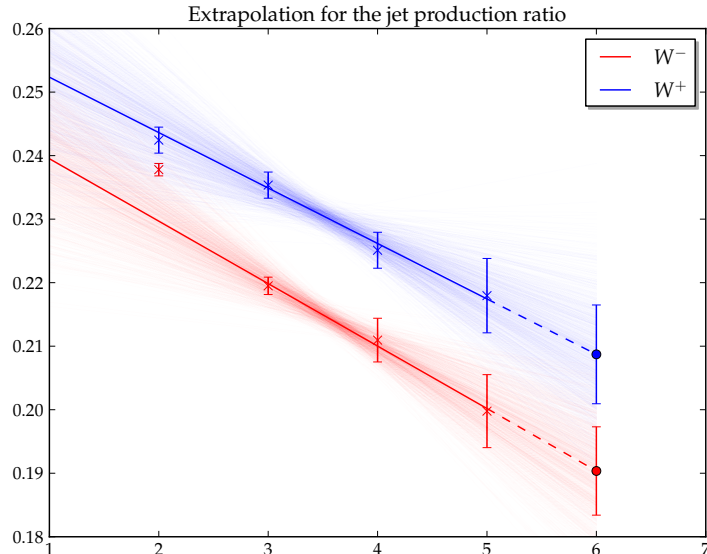


Figure 1 – Extrapolations of the ratio of total cross sections at NLO. The lower (red) line shows the extrapolation for the $W^- + n/W^- + (n-1)$ ratio, and the upper (blue) line for the $W^+ + n/W^+ + (n-1)$ ratio. The fainter lines illustrate the uncertainty envelope based on the statistical uncertainty of each underlying cross section.

dependence at NLO compared to LO. The NLO corrections soften the distribution for all jets except the softest jet. Successive jet distributions become steeper and steeper. This can be understood as reflecting the greater increase of the partonic center-of-mass invariant \hat{s} when increasing (say) the fifth jet's p_T as opposed to the third jet's, with all jets ordered in decreasing p_T . The increase in \hat{s} in turn decreases the matrix element as well as the PDFs. Other than the increasingly steep fall, distributions for the third-softest jet and softer jets resemble each other. This raises the question of whether one can think of these jets as ‘generic’, and whether one can find patterns in $W + n$ -jet production.

In order to examine patterns in W +multijet production in greater detail, it is helpful to examine ratios of observable quantities in $W + n$ -jet production to that in $W + (n-1)$ -jet production. Such ratios should be less sensitive to experimental uncertainties: the luminosity uncertainty should cancel, and the jet-energy scale dependence will be lessened. They should also be less sensitive to theoretical uncertainties: though it is hard to quantify, the scale sensitivity should diminish; and the dependence on the PDFs should decrease as well.

At low multiplicities, however, we expect deviations from generic behavior. In $W + 1$ -jet production, some subprocesses are missing at LO; and even at NLO, there are strong kinematic restrictions on the phase space of jets. In $W + 2$ -jet production, there are strong kinematic restrictions on phase space (the W boson cannot be near the leading jet, for example), which only start being relaxed at NLO. In the $W p_T$ distribution, this is reflected in large NLO corrections beyond low p_T in the $W + 3/W + 2$ -jet ratio, while corrections to the $W + n/W + (n-1)$ -jet ratio for $n \geq 4$ are more modest.

The simplest pattern we can seek is in the ratio of total cross sections subject to standard jet cuts. (The cuts we use are given in ref. [17].) In fig. 1, we show a linear fit to the cross-section ratios. The fit to the $W + 3/W + 2$ -jet, $W + 4/W + 3$ -jet, and $W + 5/W + 4$ -jet ratios is very good. The $W + 5$ -jet calculation is needed to make this assessment meaningful; were it absent, we might even be misled into including the $W + 2/W + 1$ -jet ratio. As can be seen in the figure, and as expected, that ratio (at least for W^-) is quite different from what would be expected from the fit. The linear fit allows us to predict the $W + 6/W + 5$ -jet ratio, and that

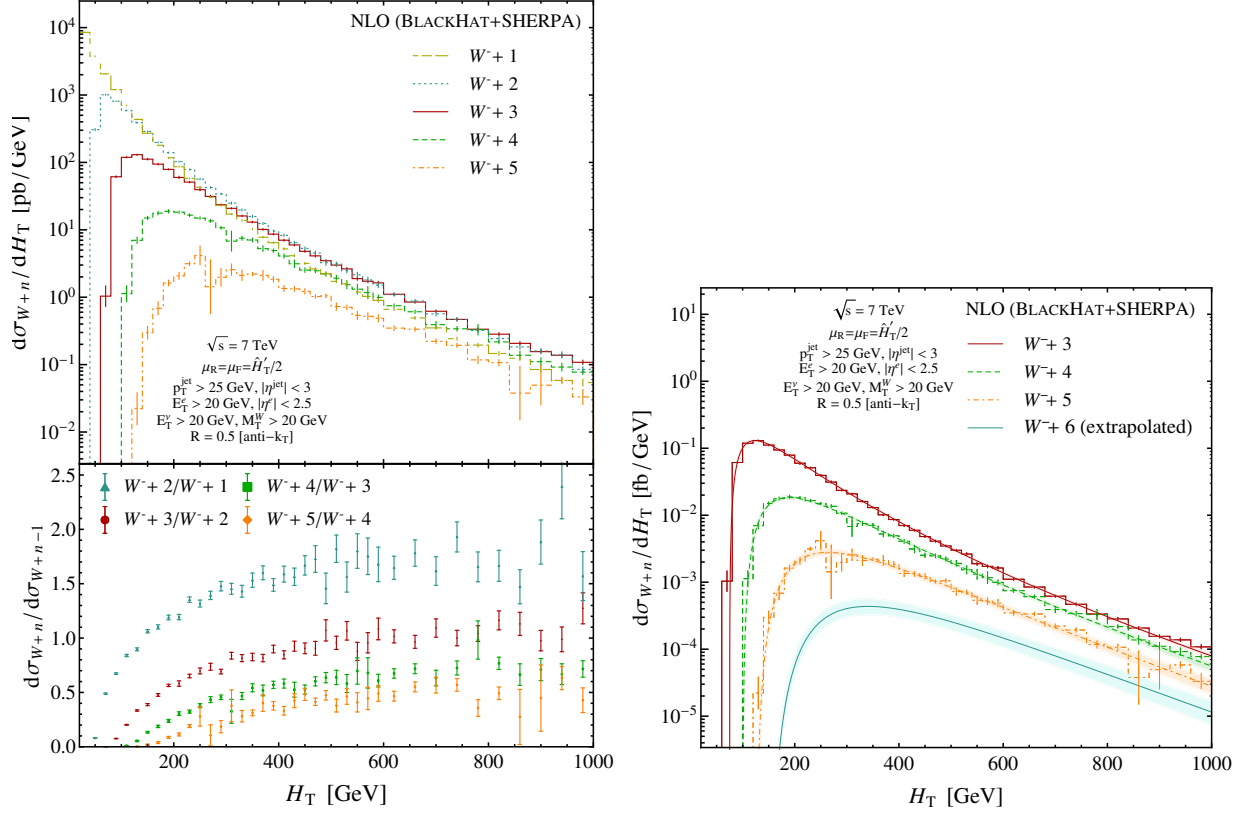


Figure 2 – (a) In the upper panel at left, the computed H_T^{jets} distributions at NLO for W^- production accompanied by up to five jets; in the lower panel, ratios of these distributions (b) At right, the computed H_T^{jets} distributions at NLO for W^- production with three to five accompanying jets, compared with an ratio-based parametrization, along with the expolation to $W^- + 6$ -jet production.

in turn, allows us give a prediction [17] for the $W + 6$ -jet production cross section,

$$\begin{aligned} W^- + 6 \text{ jets: } & 0.15 \pm 0.01 \text{ pb,} \\ W^+ + 6 \text{ jets: } & 0.30 \pm 0.03 \text{ pb,} \end{aligned} \quad (2)$$

where the uncertainty estimates include only statistical uncertainties.

4 Extrapolating the H_T^{jets} Distribution

The total transverse energy in jets, H_T^{jets} , is a good probe into potential new physics at the very highest center-of-mass energies accessible to the LHC. We have computed this distribution for a W boson accompanied by up to five jets. The results are shown in the upper panel of fig. 2(a). Let us try to predict the distribution for $W + 6$ -jet production by extrapolating those results. The H_T^{jets} distributions have a threshold, due to the minimum jet transverse momentum. Combined with the decrease towards larger H_T^{jets} , due to the decreasing matrix elements and the falling parton distributions, this leads to the appearance of a peak in the distribution. The threshold, and hence the peak locations, are different for different numbers of jets. This makes a simple extrapolation at each different value of H_T^{jets} problematic. Instead, we seek to fit a functional form.

At small H_T^{jets} , we might expect the integral we are evaluating for n jets to have the following form,

$$\left(\int \frac{dE}{E} g(E) \right)^m, \quad (3)$$

where $g(E)$ is slowly varying, and where $m < n$ because not all jets can be soft. This form suggests a functional form of $\ln^\tau \rho$ to include as a factor, where $\rho = H_T^{\text{jets}}/(np_T^{\text{min}})$. We take τ as a fit parameter. At very large H_T^{jets} (well to the right of the plots in fig. 2), phase space becomes constrained, suggesting a factor like $(1 - H_T^{\text{jets}}/H_T^{\text{max}})^\gamma$, where $H_T^{\text{max}} \simeq 7$ TeV, and γ is a fit parameter. We have previously seen [18] that such a factor is appropriate for the Tevatron, where it is more noticeable because of the lower center-of-mass energy.

This suggests the following fit form,

$$\frac{d\sigma^{W+n}}{dH_T^{\text{jets}}} = a_s^n N_n \ln^{\tau n} \rho_n (1 - H_T^{\text{jets}}/H_T^{\text{max}})^\gamma, \quad (4)$$

where N_n is a normalization, and $a_s \equiv \alpha_s(H_T^{\text{jets}})N_c/\pi$. Using this form gives a poor fit to the H_T^{jets} distributions themselves, but an excellent fit for the ratios of these distributions shown in the bottom panel of fig. 2(a). We can then fit for the values of the τ and γ parameters; once again, we get a good linear fit. Using either a fit with additional parameters to the $W + 2$ -jet H_T^{jets} distribution, or the numerical values of this distribution directly, we can then use predicted values of the τ and γ parameters to obtain predictions for the H_T^{jets} distribution in $W + n$ -jet production. The normalization N_n is related to the total cross section; we can solve for it by integrating the fit form using the extrapolated values of τ and γ , and comparing with the extrapolated value of the total cross section as in eq. (2). We can cross check this procedure by comparing the ‘predicted’ curves for $W^- + 3$ - through $W^- + 5$ -jet production with the directly computed values; this comparison is shown in fig. 2(b). The predicted H_T^{jets} distribution in $W^- + 6$ -jet production is shown in the same figure.

5 Conclusions

The production of an electroweak vector boson accompanied by multiple jets is an important Standard-Model process at the LHC. We have studied this process in a wide range of kinematic regimes, and with a varying number of accompanying jets. We see indications of simple and regular behavior in NLO calculations of cross sections and distributions beginning with three accompanying jets. We have used this behavior to predict the total cross section and a key distribution in $W + 6$ -jet production.

Acknowledgments

This research was supported by the US Department of Energy under contracts DE-AC02-76SF00515 and DE-SC0009937. DAK’s research is supported by the European Research Council under Advanced Investigator Grant ERC-AdG-228301. DM’s work was supported by the Research Executive Agency (REA) of the European Union under the Grant Agreement number PITN-GA-2010-264564 (LHCPhenoNet). SH’s work was partly supported by a grant from the US LHC Theory Initiative through NSF contract PHY-0705682. This research used resources of Academic Technology Services at UCLA.

References

- [1] C. F. Berger, Z. Bern, L. J. Dixon, F. Febres Cordero, D. Forde, H. Ita, D. A. Kosower and D. Maître, Phys. Rev. D **78**, 036003 (2008) [arXiv:0803.4180 [hep-ph]]; C. F. Berger, Z. Bern, L. J. Dixon, F. Febres Cordero, D. Forde, T. Gleisberg, H. Ita, D. A. Kosower and D. Maître, Phys. Rev. Lett. **102**, 222001 (2009) [arXiv:0902.2760 [hep-ph]].
- [2] Z. Bern, L. J. Dixon, D. C. Dunbar and D. A. Kosower, Nucl. Phys. B **425**, 217 (1994) [hep-ph/9403226]; Nucl. Phys. B **435**, 59 (1995) [hep-ph/9409265].

- [3] Z. Bern and A. G. Morgan, Nucl. Phys. B **467**, 479 (1996) [hep-ph/9511336]; Z. Bern, L. J. Dixon, D. C. Dunbar and D. A. Kosower, Phys. Lett. B **394** (1997) 105 [hep-th/9611127]; C. Anastasiou, R. Britto, B. Feng, Z. Kunszt and P. Mastrolia, Phys. Lett. B **645** (2007) 213 [hep-ph/0609191]; R. Britto and B. Feng, JHEP **0802**, 095 (2008) [arXiv:0711.4284 [hep-ph]]; W. T. Giele, Z. Kunszt and K. Melnikov, JHEP **0804**, 049 (2008) [arXiv:0801.2237 [hep-ph]]; R. Britto, B. Feng and P. Mastrolia, Phys. Rev. D **78**, 025031 (2008) [arXiv:0803.1989 [hep-ph]]; R. K. Ellis, W. T. Giele, Z. Kunszt and K. Melnikov, Nucl. Phys. B **822** (2009) 270 [arXiv:0806.3467 [hep-ph]].
- [4] Z. Bern, L. J. Dixon and D. A. Kosower, Nucl. Phys. B **513**, 3 (1998) [hep-ph/9708239].
- [5] R. Britto, F. Cachazo and B. Feng, Nucl. Phys. B **725**, 275 (2005) [hep-th/0412103].
- [6] R. Britto, F. Cachazo, B. Feng and E. Witten, Phys. Rev. Lett. **94**, 181602 (2005) [hep-th/0501052].
- [7] C. F. Berger, Z. Bern, L. J. Dixon, D. Forde and D. A. Kosower, Phys. Rev. D **74**, 036009 (2006) [hep-ph/0604195].
- [8] G. Ossola, C. G. Papadopoulos and R. Pittau, Nucl. Phys. B **763**, 147 (2007) [hep-ph/0609007].
- [9] D. Forde, Phys. Rev. D **75**, 125019 (2007) [arXiv:0704.1835 [hep-ph]].
- [10] S. D. Badger, JHEP **0901**, 049 (2009) [arXiv:0806.4600 [hep-ph]].
- [11] T. Gleisberg, S. Höche, F. Krauss, A. Schaliche, S. Schumann and J. C. Winter, JHEP **0402**, 056 (2004) [hep-ph/0311263]; T. Gleisberg, S. Höche, F. Krauss, M. Schönherr, S. Schumann, F. Siegert and J. Winter, JHEP **0902**, 007 (2009) [arXiv:0811.4622 [hep-ph]].
- [12] S. Catani and M. H. Seymour, Nucl. Phys. B **485**, 291 (1997) [Erratum-ibid. B **510**, 503 (1998)] [hep-ph/9605323].
- [13] Z. Nagy, Phys. Rev. D **68**, 094002 (2003) [hep-ph/0307268].
- [14] T. Gleisberg and S. Höche, JHEP **0812**, 039 (2008) [arXiv:0808.3674 [hep-ph]].
- [15] Z. Bern, L. J. Dixon, F. Febres Cordero, S. Hche, H. Ita, D. A. Kosower and D. Maitre, Comput. Phys. Commun. **185**, 1443 (2014) [arXiv:1310.7439 [hep-ph]].
- [16] C. F. Berger, Z. Bern, L. J. Dixon, F. Febres Cordero, D. Forde, T. Gleisberg, H. Ita, D. A. Kosower and D. Maitre, Phys. Rev. Lett. **106**, 092001 (2011) [arXiv:1009.2338 [hep-ph]].
- [17] Z. Bern, L. J. Dixon, F. Febres Cordero, S. Hoeche, H. Ita, D. A. Kosower, D. Maitre and K. J. Ozeren, Phys. Rev. D **88**, 014025 (2013) [arXiv:1304.1253 [hep-ph]].
- [18] C. F. Berger, Z. Bern, L. J. Dixon, F. Febres Cordero, D. Forde, T. Gleisberg, H. Ita, D. A. Kosower and D. Maitre, Phys. Rev. D **82**, 074002 (2010) [arXiv:1004.1659 [hep-ph]].