



HAL
open science

Herschel observations of Hickson compact groups of galaxies: Unveiling the properties of cold dust

T. Bitsakis, V. Charmandaris, P. N. Appleton, T. Díaz-Santos, E. Le Floch, E. da Cunha, K. Alatalo, M. Cluver

► **To cite this version:**

T. Bitsakis, V. Charmandaris, P. N. Appleton, T. Díaz-Santos, E. Le Floch, et al.. Herschel observations of Hickson compact groups of galaxies: Unveiling the properties of cold dust. *Astronomy and Astrophysics - A&A*, 2014, 565, pp.A25. 10.1051/0004-6361/201323349 . cea-01270931

HAL Id: cea-01270931

<https://cea.hal.science/cea-01270931>

Submitted on 8 Feb 2016

HAL is a multi-disciplinary open access archive for the deposit and dissemination of scientific research documents, whether they are published or not. The documents may come from teaching and research institutions in France or abroad, or from public or private research centers.

L'archive ouverte pluridisciplinaire **HAL**, est destinée au dépôt et à la diffusion de documents scientifiques de niveau recherche, publiés ou non, émanant des établissements d'enseignement et de recherche français ou étrangers, des laboratoires publics ou privés.

Herschel observations of Hickson compact groups of galaxies: Unveiling the properties of cold dust^{★,★★}

T. Bitsakis^{1,2,3}, V. Charmandaris^{1,4,5}, P. N. Appleton², T. Díaz-Santos⁶, E. Le Floc'h⁷, E. da Cunha⁸,
K. Alatalo², and M. Cluver⁹

¹ Department of Physics, University of Crete, 71003 Heraklion, Greece
e-mail: bitsakis@physics.uoc.gr

² NASA *Herschel* Science Center, California Institute of Technology, 770 S. Wilson Ave., Pasadena CA 91125, USA

³ IESL/Foundation for Research & Technology-Hellas, 71110 Heraklion, Greece

⁴ Institute for Astronomy, Astrophysics, Space Applications & Remote Sensing, National Observatory of Athens, 15236 Penteli, Greece

⁵ Chercheur Associé, Observatoire de Paris, 75014 Paris, France

⁶ *Spitzer* Science Center, California Institute of Technology, 1200 E. California Blvd., Pasadena CA 91125, USA

⁷ CEA-Saclay, Orme des Merisiers, Bat. 709, 91191 Gif-sur-Yvette, France

⁸ Max-Planck-Institut für Astronomie, Königstuhl 17, 69117 Heidelberg, Germany

⁹ Department of Astronomy, University of Cape Town, Private Bag X3, Rondebosch 7701, South Africa

Received 28 December 2013 / Accepted 5 February 2014

ABSTRACT

We present a *Herschel* far-infrared and sub-millimetre (sub-mm) study of a sample of 120 galaxies in 28 Hickson compact groups (HCGs). Fitting their UV to sub-mm spectral energy distributions with the model of da Cunha et al. (2008), we accurately estimate the dust masses, luminosities, and temperatures of the individual galaxies. We find that nearly half of the late-type galaxies in dynamically “old” groups, those with more than 25% of early-type members and redder UV-optical colours, also have significantly lower dust-to-stellar mass ratios compared to those of actively star-forming galaxies of the same mass found both in HCGs and in the field. Examining their dust-to-gas mass ratios, we conclude that dust was stripped out of these systems as a result of the gravitational and hydrodynamic interactions, experienced owing to previous encounters with other group members. About 40% of the early-type galaxies (mostly lenticulars), in dynamically “old” groups, display dust properties similar to those of the UV-optical red late-type galaxies. Given their stellar masses, star formation rates, and UV-optical colours, we suggest that red late-type and dusty lenticular galaxies represent transition populations between blue star-forming disk galaxies and quiescent early-type ellipticals. On the other hand, both the complete absence of any correlation between the dust and stellar masses of the dusty ellipticals and their enhanced star formation activity, suggest the increase in their gas and dust content due to accretion and merging. Our deep *Herschel* observations also allow us to detect the presence of diffuse cold intragroup dust in 4 HCGs. We also find that the fraction of 250 μm emission that is located outside of the main bodies of both the red late-type galaxies and the dusty lenticulars is 15–20% of their integrated emission at this band. All these findings are consistent with an evolutionary scenario in which gas dissipation, shocks, and turbulence, in addition to tidal interactions, shape the evolution of galaxies in compact groups.

Key words. galaxies: evolution – galaxies: interactions – galaxies: groups: general – infrared: galaxies

1. Introduction

Since most galaxies are found within large structures, such as groups and clusters, studying how the environment can affect their properties (i.e. stellar populations and morphology) is crucial to understanding their evolution. It is now known that dynamical interactions and the merging of galaxies can affect both their morphologies (induced bars, bridges, tails, and other tidal distortions) and the star formation and nuclear activity (i.e. Struck 1999). Nevertheless, galaxy environments can differ depending on the number and the kinematic behaviour of their members. Compact groups of galaxies are systems of several

galaxies that display high galaxy densities, similar to those found in the central regions of rich clusters, unlike clusters, they have much lower average velocity dispersions (Hickson 1997 quotes a $\sigma \sim 250 \text{ km s}^{-1}$). There are exceptions, such as Stephan’s Quintet, where an intruder is colliding with the group with a velocity difference of over 800 km s^{-1} (Hickson et al. 1992). As a result, galaxies in compact groups can experience a series of strong tidal encounters with other group members during their lifetimes. For these reasons, compact groups are considered ideal systems for studying the effects of dense environments in galaxy evolution. To examine the properties of galaxies in compact groups we used the catalogue defined by Hickson (1982); it consists of 100 groups, containing 451 galaxies, in compact configurations (less than 5 arcmin), within relatively isolated regions where no excess of other surrounding galaxies can be seen. Even though all Hickson compact groups (HCGs) were selected as having four or more galaxies, the original sample was later reduced to 92 groups, since spectroscopic observations revealed

* Appendix A is available in electronic form at

<http://www.aanda.org>

** Full Table 2 and reduced spectra as FITS files are only available at the CDS via anonymous ftp to cdsarc.u-strasbg.fr (130.79.128.5) or via

<http://cdsarc.u-strasbg.fr/viz-bin/qcat?J/A+A/565/A25>

the inclusion of interlopers among their members (see [Hickson et al. 1992](#)).

Detailed studies in the past three decades have revealed that HCGs occupy a unique position in the framework of galaxy evolution. They display an excess of elliptical galaxies (relative to the field), with their spiral galaxy fraction nearly half of what it is observed in the field (43%; [Hickson 1982](#)). [Mendes de Oliveira & Hickson \(1994\)](#) showed that almost half of their galaxies display morphological features of interactions, and [Zepf & Whitmore \(1993\)](#) revealed indications of mergers in the irregular isophotes of the elliptical galaxies. In addition, [Ponman et al. \(1996\)](#) found hot X-ray gas in $\sim 75\%$ of the groups, implying that their members reside in a common dark matter halo, while [Desjardins et al. \(2013\)](#) show that the X-ray luminosity increases as group HI-to-dynamical mass ratio decreases. However, the hot gas is not in hydrostatic equilibrium and, thus, these systems are not the low-mass analogues of rich groups or clusters. Single-dish radio measurements reveal that galaxies in compact groups are generally deficient in HI with a median mass two times less than what is observed in loose groups ([Verdes-Montenegro et al. 2001](#)). Furthermore, [Martinez-Badenes et al. \(2012\)](#) show an increase in the conversion of HI-to-H₂ caused by the on-going tidal interactions in the spiral galaxies of groups found in early stages of evolution, followed by HI stripping and the decrease in molecular gas because of the lack of replenishment. Nearly 40% of HCG members for which nuclear spectroscopy has been obtained display evidence of active galactic nuclei ([Shimada et al. 2000](#); [Martinez et al. 2010](#)).

Although tidal stripping is clearly a strong contender for explaining HI deficiencies, there are cases where the gas seems to have been almost completely stripped from the galaxies, most likely involving both hydrodynamic, as well as pure gravitational, processes. The best studied example is Stephan’s Quintet (SQ = HCG92), where HI and molecular studies show that almost all of the cold interstellar medium (ISM) now resides in the intragroup medium ([Williams et al. 2002](#); [Gao & Xu 2000](#); [Guillard et al. 2012](#)). Strong dissipative processes, in addition to gravity, are clearly at work on a large scale in this system, leading to extensive shock heating in the interfaces between galaxies and the intragroup medium, as is evident by the presence of hot X-ray gas, warm molecular hydrogen, and diffuse ionized carbon ([Trinchieri et al. 2005](#); [O’Sullivan et al. 2009](#); [Appleton et al. 2006](#); [Cluver et al. 2010](#); [Appleton et al. 2013](#)).

While systems like SQ seem rare, they are not unique and may represent a rapid hydrodynamic phase in which head-on collisions between the group members can cause rapid sweeping of the gas (e.g. [Appleton et al. 1996](#) for the ring galaxy VII Zw 466) in addition to disruptive tides, conventional mergers, and gas depletion. For example, a recent study of HCG57 by [Alatalo et al. \(in prep.\)](#) also shows a highly disruptive collision between two galaxies in which the molecular and atomic gas is dramatically changed by direct collision. This may be similar to the Taffy system ([Condon et al. 1994](#)), where a head-on collision has pulled gas into a highly turbulent bridge between the galaxies, heating the molecular gas ([Peterson et al. 2012](#)).

[Cluver et al. \(2013\)](#) studied the mid-IR spectra of 74 galaxies in 23 HCGs and discovered that more than 10% of them contain enhanced warm molecular hydrogen emission that, like SQ, may be indicative of shocks and turbulent heating of their ISM. Furthermore, these H₂ enhanced galaxies (called molecular hydrogen emission galaxies – MOHEGs by [Ogle et al. 2010](#)) seem to primarily occupy a special place in mid-IR colour space referred to as the “gap” by [Johnson et al. \(2007\)](#). Although not strictly a “gap” (see [Bitsakis et al. 2011](#)), Johnson et al. as well

as [Walker et al. \(2012\)](#) argue that there is a deficiency of galaxies in the *Spitzer* IRAC colour–colour space defined primarily as lying in the range $-0.4 < \log(f_{5.8}/f_{3.6}) < 0.0$ which they attribute to rapid evolution from the star forming to the quiescent galaxy sequences. In addition, [Walker et al. \(2013\)](#) showed that galaxies located in the area of the mid-IR gap, have already transitioned to the optical $[g - r]$ red sequence. Nevertheless, since these authors do not correct these colours for dust attenuation, some of the galaxies can be found in the red sequence due to extinction. [Cluver et al. \(2013\)](#) name the region as the “infrared green valley” since it falls between the two main peaks in the mid-IR colour space characterised primarily by star-forming galaxies and galaxies dominated by old stellar populations in compact groups, and as this current paper shows, galaxies in this region tend to be a mix of dusty red late-type and dusty lenticular galaxies. The discovery that the majority of the galaxies that lie in this region of colour space are also MOHEGs, may lend some credence to the idea that galaxies in the green valley are not just the tail of two separate galaxy populations, but may be galaxies “in transition” from an evolutionary perspective. These authors suggest that these shock-excited systems may be heated by collisions with HI clouds liberated into the intragroup medium by previous tidal stripping. SQ could be seen as an extreme example of this process. However, as we see later in this paper, re-accretion of gas by early-type galaxies could also cause evolution of galaxies in the other direction into the green valley.

In [Bitsakis et al. \(2010, 2011\)](#) – hereafter Paper I and Paper II, respectively – we obtained the mid-IR fluxes of a sample of 32 HCGs (containing 135 galaxies) to study, for first time, their star formation properties. Using all the multi-wavelength data available, combined with the physically-motivated model of [da Cunha et al. \(2008\)](#), we were able to consistently interpret the UV-to-mid-IR spectral energy distribution (SED) of the galaxies in terms of a number of physical parameters, such as their bolometric luminosity, star formation rate, stellar mass, and dust attenuation. We also identified the dynamical state of each group based on the fraction of late-type galaxies they contain, defining as “old” (or “young”) those with more (or less) than 75% early-type members, and showed that this is consistent with classification based on HI gas content and morphology. We concluded that spiral galaxies in dynamically young groups do not differentiate their star formation properties and UV-optical colours from similar galaxies in other environments, such as in the field and in early stage interacting pairs. On the other hand, the dynamically old late-type galaxies display lower specific star formation rates (sSFR) and redder $[NUV - r]$ colours than what we see in the field. We suggested that this can be attributed to past galaxy-galaxy interactions and possible minor merging of the group members since the time of its formation, which has increased their stellar masses. Nevertheless, the idea of red late-type galaxies populating the “green valley” is not new. [Boselli et al. \(2008\)](#) show that ram pressure stripping can remove substantial amounts of atomic gas out of the low-luminosity ($L_H < 10^{9.6} L_{H,\odot}$) late-type galaxies entering the Virgo cluster, quenching their star formation and making them display redder colours relatively short timescales (< 150 Myr). Later, this work has been expanded by [Hughes & Cortese \(2009\)](#), [Cortese & Hughes \(2009\)](#), and [Gavazzi et al. \(2010\)](#) to brighter galaxies in high density environments (i.e. in the clusters of Virgo, Coma, and A1367), showing that the red late-type galaxies display high HI deficiencies and truncation of star formation. Despite the difference in the mechanisms that cause this “reddening” (ram pressure in clusters and gravitational stripping in groups) it seems

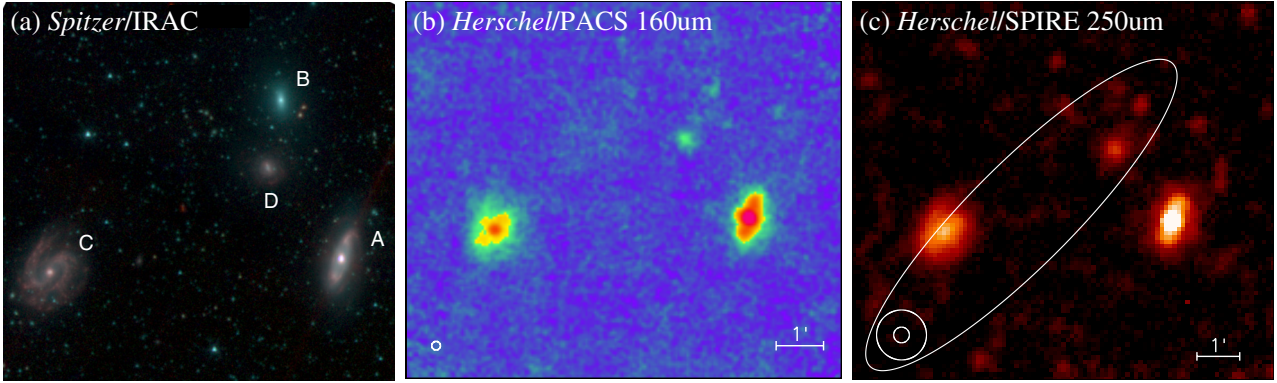


Fig. 1. *Spitzer*/IRAC “true” colour image of HCG 07 (panel **a**). The blue channel traces the $3.6\ \mu\text{m}$ emission, the green the $4.5\ \mu\text{m}$ one, and the red the $8.0\ \mu\text{m}$ one. *Herschel*/PACS $160\ \mu\text{m}$ (panel **b**), and *Herschel*/SPIRE $250\ \mu\text{m}$ (panel **c**) images of the same group. In the bottom left corners of panels **b**) and **c**) we include the beam sizes of the *Herschel* instruments ($11''$ and $22''$, respectively). In panel **c**) we also display for comparison the beams of the AKARI $160\ \mu\text{m}$ band ($70''$) and IRAS $100\ \mu\text{m}$ ($1.2' \times 5'$).

that the effects on stellar populations and star formation activity are similar in compact environments.

In our earlier work the estimates of the far-infrared (IR) luminosities were based on limited information available at the time for generating SEDs in the far-IR. Our knowledge of the far-IR was based primarily on 60 and $100\ \mu\text{m}$ measurements from IRAS (which had an ~ 4 arcmin beam shape), making it difficult to properly separate galaxies in compact groups that often also lie well within the beam profile. As a result, much of our far-IR knowledge of individual galaxies was necessarily based on extrapolation from the *Spitzer* $24\ \mu\text{m}$ data points.

To address this problem, we use in the current paper data taken from several *Herschel* open time proposals led by our team, as well as other archival data sets from the *Herschel* Science Archive¹ to make the first detailed analysis of 28 HCG, extending the SED to the far-IR and sub-mm wavelengths. In Sect. 2, we describe the selection of the samples, used in this work, the data reduction processes, and the UV to far-IR SED modelling of the galaxies. In Sect. 3, we present the results of our analysis. In Sect. 4, we discuss the implications of these findings, and in Sect. 5 we present our conclusions.

2. Observations and data analysis

2.1. The data

The sample of Hickson compact groups we present in this paper has been carefully selected from the Bitsakis et al. (2011) mid-IR sample, such that GALEX/UV, SDSS/optical, near-IR, and *Spitzer*/mid-IR data are available for each individual galaxy. Our sample consists of 28 HCGs (120 galaxies), all observed in the far-IR and sub-mm bands by the *Herschel* Space Observatory (Pilbratt et al. 2010)². As an example of the data in hand, we display the *Herschel* $160\ \mu\text{m}$ and $250\ \mu\text{m}$ images of HCG07 in Fig. 1, along with a true colour image composite based on *Spitzer*/IRAC 3.6 , 4.5 and $8.0\ \mu\text{m}$ emission. The comparison of *Herschel*, AKARI, and IRAS beam-sizes shown in the lower left-hand corner of Fig. 1c illustrates how significantly *Herschel* can improve our knowledge of the spatial distribution and properties of dust in HCG galaxies.

The observations were obtained between June 2011 and March 2013 (see details in Table 1). From these groups, 18 were observed at 70 and $160\ \mu\text{m}$ by the Photo-detecting Array Camera and Spectrometer (PACS; Poglitsch et al. 2010), and 6 at the 110 and $160\ \mu\text{m}$, using scan-map mode at medium scan speed ($20''/\text{s}$). All of these objects were also observed simultaneously at all bands (250 , 350 , and $500\ \mu\text{m}$) of the Spectral and Photometric Infrared Receiver (SPIRE; Griffin et al. 2010), using large or small scan-map modes, depending on the source sizes, at the nominal scan speed ($30''/\text{s}$). Additionally, we have recovered the PACS and SPIRE imaging of four more groups (see details in Table 1) from the HSA. The sizes of the instrument beams are $5.5'' \times 5.8''$, $6.7'' \times 6.9''$, and $10.7'' \times 12.1''$ for PACS 70 , 100 , and $160\ \mu\text{m}$, and $22''$, $29''$, and $37''$ for SPIRE 250 , 350 , and $500\ \mu\text{m}$ bands, respectively. We reduced the Level-1 (timelines) PACS data products using the specialised SCANAMORPHOS (see Roussel et al. 2013) and UNIMAP (see Traficante et al. 2011) packages, which unlike the standard HIPE v.10 pipeline routines, *Naive* and *MADmap*, were able to fit and remove the low-frequency ($1/f$) noise more accurately from our maps. Noise measurements in the final maps indicate typical background uncertainties of 0.15 , 0.17 , and $0.38\ \text{mJy/pixel}$ for the 70 , 100 and $160\ \mu\text{m}$ bands, respectively. The absolute calibration uncertainty is based to the photospheric models of five fiducial stellar standards and has been shown to be 5% (Balog et al. 2014). SPIRE data reduction was carried out using the standard pipeline (DESTRIPPER in HIPE v.10).

Typical background noise in our maps is 0.49 , 0.83 , and $0.98\ \text{mJy/pixel}$ for the three SPIRE bands, respectively. Calibration uncertainties are 7% . The conversion of Jy/beam to Jy/pixel has been done considering beam area values of $465''^2$, $822''^2$ and $1768''^2$ for 250 , 350 and $500\ \mu\text{m}$, respectively. Finally, a colour correction (K_{4e}/K_{4p}) was applied to all three bands using 0.98279 , 0.98344 , and 0.97099 correction factors as indicated in the SPIRE Observer’s Manual (Sect. 5.2.8). We performed aperture photometry at all bands, using the same apertures we used in the UV, near-, and mid-IR wavelengths. Owing to small differences (3 – 4%) in the photometry estimates of the maps reduced by SCANAMORPHOS and UNIMAP, we adopted those measured by the former for the purposes of this work. The results are presented in Table 2. The total uncertainty in each measurement is given by the sum of the quadrature of the calibration (σ_{cal}) and photometry (σ_{phot}) uncertainties. Ciesla et al. (2012) show that the first dominates the uncertainties of point-like sources (galaxies with angular diameters less than $20''$, $29''$, and $37''$

¹ The *Herschel* Science Archive is publicly available at http://herschel.esac.esa.int/Science_Archive.shtml

² *Herschel* is an ESA space observatory with science instruments provided by European-led Principal Investigator consortia and with important participation from NASA.

Table 1. Observational parameters of our sample.

Group-ID	PACS channels	Duration ^a (s)	SPIRE channels	Duration ^a (s)	Proposal PI
HCG02	70/160	714	250/350/500	1974	V. Charmandaris
HCG04	70/160	548	250/350/500	859	V. Charmandaris
HCG06	110/160	1106	250/350/500	445	P. Appleton
HCG07	70/160	726	250/350/500	1926	V. Charmandaris
HCG15	70/110/160	832/906/1738	250/350/500	1541	V. Charmandaris, P. Appleton
HCG16	70/110/160	606/606/1212	250/350/500	1324	D. Sanders ^b
HCG22	70/160	832	250/350/500	859	V. Charmandaris
HCG25	110/160	630	250/350/500	1541	P. Appleton
HCG37	70/160	684	250/350/500	859	V. Charmandaris
HCG38	70/160	684	250/350/500	859	V. Charmandaris
HCG40	70/110/160	548/516/1064	250/350/500	445	V. Charmandaris, P. Appleton
HCG44	70/160	2708	250/350/500	1035	R. Kennicutt ^b
HCG47	70/160	684	250/350/500	859	V. Charmandaris
HCG54	70/160	512	250/350/500	859	V. Charmandaris
HCG55	70/160	394	250/350/500	445	V. Charmandaris, M. Cluver
HCG56	70/160	466	250/350/500	445	V. Charmandaris, M. Cluver
HCG57	110/160	1068	250/350/500	999	P. Appleton, M. Cluver
HCG59	70/160	868	250/350/500	859	V. Charmandaris
HCG68	70/160	1480	250/350/500	1654	V. Charmandaris, M. Cluver
HCG71	70/160	832	250/350/500	859	V. Charmandaris
HCG75	70/160	548	250/350/500	859	V. Charmandaris
HCG79	70/160	424	250/350/500	445	V. Charmandaris, M. Cluver
HCG82	70/160	684	250/350/500	859	V. Charmandaris
HCG91	70/160	1480	250/350/500	999	V. Charmandaris, M. Cluver
HCG92	110/160	48600	250/350/500	583	P. Guillard ^b
HCG95	110/160	758	250/350/500	445	P. Appleton
HCG96	70/110/160	396/396/792	250/350/500	445	D. Sanders ^b , M. Cluver
HCG100	70/160	684	250/350/500	445	V. Charmandaris, M. Cluver

Notes. ^(a) On-source time. ^(b) Obtained from the *Herschel* Science Archive (HSA).

at 250, 350, and 500 μm bands of SPIRE) and the second of the more extended sources. The parameter σ_{phot} includes the instrumental error (1–2%), the confusion error due to background sources (see [Nguyen et al. 2010](#)), and the error of the sky (given by $\sigma_{\text{sky}} = N_{\text{pixel}} \cdot \sigma_{\text{sky,pix}}$, where N_{pixel} is the number of pixels in each aperture and $\sigma_{\text{sky,pix}}$ the sky error per pixel).

To compare the derived properties and colours of the galaxies in our sample with those of galaxies in the field, we acquired the UV-to-sub-mm fluxes of a similar multi-wavelength dataset for the “Key Insights on Nearby Galaxies: a Far-IR Survey with *Herschel* (KINGFISH; [Kennicutt et al. 2011](#); [Dale et al. 2012](#)). KINGFISH is a sample of 61 nearby galaxies, observed by *Herschel*/PACS and SPIRE and chosen to cover a wide range of galaxy properties and local ISM environments found in the nearby Universe. Most objects are late-type galaxies with angular sizes between 5' and 15'. It also contains four early-type galaxies (NGC 855, NGC 1377, NGC 3773, and NGC 4125) with the last one being a LINER.

2.2. Galaxy and group classification

We have used the classifications of [Hickson \(1982\)](#) and [de Vaucouleurs et al. \(1991\)](#), to identify the morphologies of the galaxies in our sample. From the 120 spectroscopically identified galaxy members in these groups, 59% are morphologically classified as late-type galaxies (spirals and irregulars, Hubble class $T \geq 1$, hereafter LTG) and 41% are early-type galaxies (ellipticals and lenticulars, with $T \leq 0$, hereafter ETG). In addition, by applying the classification of the groups' dynamical state, described in Paper I, 13 (46%) groups are classified as dynamically

young (ETG fraction <25%) and 15 (54%) as dynamically old (ETG fraction $\geq 25\%$).

Following the results of Paper II, we further classified our HCG LTGs according to their extinction-corrected UV-optical colours, which are related to their star formation activity. This enabled us to show that the well known bimodality, which should appear between the star forming galaxies of the “blue cloud” ($[NUV-r] < 3$) and the quiescent galaxies of the “red sequence” ($[NUV-r] > 5$), was not present in the compact group LTGs. More specifically, the distribution of their $[NUV-r]$ colours not only did not appear to be bimodal, but it also peaked in the intermediate area, the “green valley” ($3 < [NUV-r] < 5$). Our results suggested that the LTGs located in the “green valley” and “red sequence” display older stellar populations, since they built-up their stellar masses possibly as a result of the numerous past interactions.

In Fig. 2 we have used our model (described in the next section) to reproduce the corresponding Fig. 11 from Paper II. We separated the “blue cloud” LTGs (hereafter normal-LTGs) found in dynamically young and old groups from those found in the “green valley” and “red sequence” areas (hereafter red-LTGs). Finally, we also separated the ETGs depending on whether they were detected in the far-IR and sub-mm bands of *Herschel* (hereafter dusty-ETGs) or not (marked simply as ETGs).

2.3. Estimating the physical parameters of the galaxies

Using the [da Cunha et al. \(2008\)](#) MAGPHYS model³ we can consistently compute the IR emission originating in dust in the

³ Available at <http://www.iap.fr/magphys/>

Table 2. Sample of the far-IR and sub-mm photometry.

Galaxy ID	PACS 70 μm^a (Jy)	PACS 110 μm^a (Jy)	PACS 160 a (Jy)	SPIRE 250 μm (Jy)	SPIRE 350 μm (Jy)	SPIRE 500 μm (Jy)
HCG16a	0.413 ± 0.021	0.697 ± 0.035	1.026 ± 0.051	0.503 ± 0.109	0.350 ± 0.057	$<0.040 \pm 0.030$
HCG16b	6.836 ± 0.342	10.95 ± 0.55	10.71 ± 0.54	4.271 ± 0.331	1.558 ± 0.130	0.485 ± 0.052
HCG16c	13.30 ± 0.66	15.99 ± 0.80	12.61 ± 0.63	3.984 ± 0.291	1.379 ± 0.106	$0.385 \pm .037$
HCG16d	12.04 ± 0.60	12.21 ± 0.61	8.234 ± 0.411	2.222 ± 0.190	0.737 ± 0.075	$0.210 \pm .035$
HCG40a	$<0.249 \pm 0.012^b$	0.103 ± 0.005	0.195 ± 0.010	$<0.040 \pm 0.030$	$<0.026 \pm 0.020$	$<0.045 \pm 0.030$
HCG40b	0.121 ± 0.006	0.306 ± 0.015	0.318 ± 0.016	$<0.030 \pm 0.020$	$<0.026 \pm 0.012$	$<0.045 \pm 0.009$
HCG40c	0.991 ± 0.049	2.258 ± 0.113	3.002 ± 0.150	1.260 ± 0.096	0.580 ± 0.046	0.230 ± 0.021
HCG40d	1.103 ± 0.055	1.710 ± 0.086	1.625 ± 0.081	0.640 ± 0.051	0.280 ± 0.025	0.100 ± 0.013
HCG40e	0.072 ± 0.004	0.134 ± 0.007	0.368 ± 0.018	$<0.030 \pm 0.022$	$<0.026 \pm 0.013$	$<0.045 \pm 0.010$

Notes. ^(a) The PACS photometry presented here was performed on the maps reduced by the Scanamorphos mapper. ^(b) With upper limits are marked objects whose emission was under the detection limit. The full table is available at the CDS.

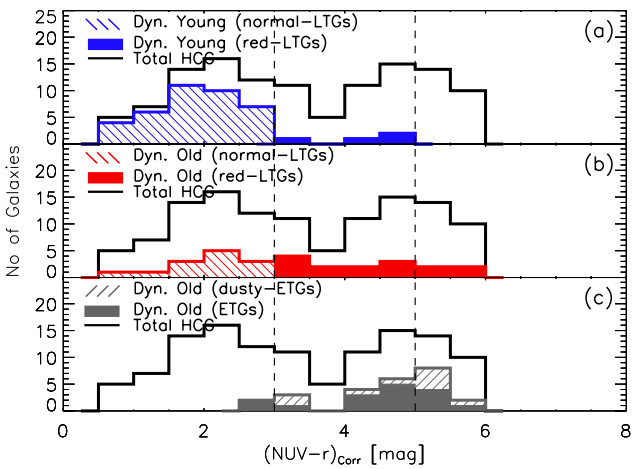


Fig. 2. Histogram of the extinction-corrected $[NUV - r]$ colours of the dynamically young and old “blue-cloud” late-type galaxies (normal-LTGs; marked with blue and red shaded lines in panels **a**) and **b**), respectively) and the dynamically young and old “green valley” and “red sequence” late-type galaxies (red-LTGs; marked with solid blue and red colours in panels **a**) and **b**), respectively). The $[NUV - r]$ colour distributions of the dusty early-type galaxies of the dynamically old groups (dusty-ETGs; marked with a solid grey colour in panel **c**) and those which were under the detection limit (undetected-ETGs; marked with dashed grey lines in the same panel). The solid black line in all panels represents the total HCG galaxy distribution. The dashed vertical lines separate the different region of the $[NUV - r]$ colour space (see Wyder et al. 2007), the “blue cloud” ($[NUV - r] < 3$), the “green valley” ($3 < [NUV - r] < 5$), and the “red sequence” ($[NUV - r] > 5$).

dense stellar birth clouds and the diffuse ISM of galaxies by proper treatment of the emission from the embedded stellar populations sampled at ultraviolet, optical, and near-IR wavelengths (an example is presented in the top panel of Fig. 3). This model has been successfully applied to large samples of star forming galaxies from nearby field galaxies, such as the SINGS sample (da Cunha et al. 2008), to luminous IR galaxies (da Cunha et al. 2010b). A major advantage of this Bayesian method is that it allows us to compute the probability distribution functions (PDFs) for the various physical parameters and, thus, enables us to easily quantify the physical properties of a given population of galaxies, as well as the uncertainties associated with each parameter (see bottom panels of Fig. 3). Using MAGPHYS we fitted the SEDs of all galaxies in our sample and in the comparison

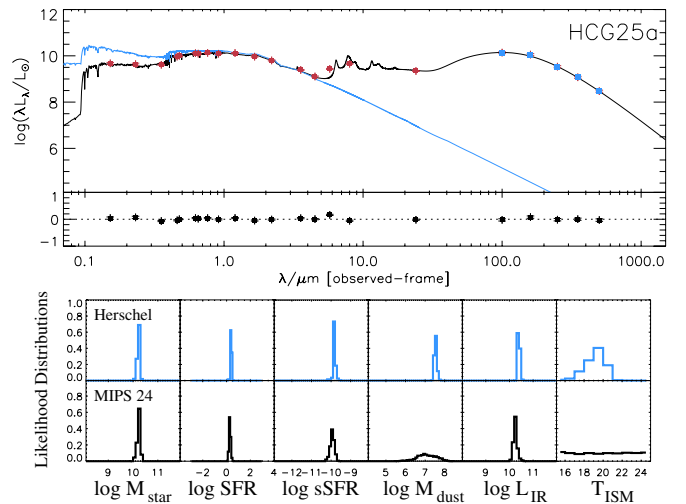


Fig. 3. *Top panel:* in black the best model fit of the observed SED of HCG25a (a normal-LTG of $T = 5$) shown with red points. The blue line shows the unattenuated spectrum. The blue points correspond to the *Herschel*/PACS and SPIRE fluxes. *Bottom panels:* likelihood distributions of the stellar mass (M_{star}), SFR, sSFR, dust mass (M_{dust}), dust luminosity (L_{IR}), and temperature of the dust in the diffuse ISM (T_{ISM}), derived using the UV-to-MIPS 24 μm (in black) and after including the *Herschel* bands (in blue).

sample and estimated their star formation and dust properties. The results are presented in Tables 3 and 4, respectively.

As we mentioned in the introduction, up until the launch of *Herschel*, the lack of deep, high spatial-resolution far-IR imaging of the groups, essential for resolving each member galaxy, has caused a serious limitation in understanding the dust properties (such as the dust masses, luminosities, and temperatures) of the group members. In the bottom panels of Fig. 3 we present an example of the derived PDFs of the stellar mass, star formation rate (SFR), specific-SFR (sSFR), dust mass and luminosity (M_{dust} and L_{IR} , respectively), and cold dust temperature (T_{ISM}) of the galaxy HCG25a. We plot the histograms of the parameters derived using UV-to-MIPS 24 μm data and the ones that also include the *Herschel*/PACS and SPIRE bands. We note that, as expected, the uncertainty in the PDFs of the stellar mass and SFR of HCG25a is reduced by a factor of 1.12 and 2.7, respectively, without a major change in the most likely value. However, the corresponding values of the luminosity and the mass of the dust change significantly ($\sim 65\%$), and their PDFs are better constrained by a factor of ~ 10 . Finally, the average temperature of

Table 3. Derived physical parameters of our galaxies based on the SED modelling.

Galaxy	Morphology ^a	Group type ^b	$\log sSFR$ (yr^{-1})	SFR ($M_{\odot} \text{yr}^{-1}$)	$\log M_{\text{star}}$ (M_{\odot})	$\log L_{\text{IR}}$ (L_{\odot})	$\log M_{\text{dust}}$ (M_{\odot})	T_{dust}^c (K)
HCG02a	LT (3)	DY	-9.47	2.35	9.86	10.25	7.24	32.1
HCG02b	LT (9)	DY	-9.27	2.83	9.72	10.47	6.80	34.9
HCG02c	LT (5)	DY	-10.02	0.48	9.72	9.62	7.01	27.8
HCG04a	LT (4)	DO	-9.42	16.4	10.63	11.22	7.80	31.3
HCG04b	LT (3)	DO	-10.22	0.54	9.96	9.74	7.32	29.1
HCG04d	ET (-5)	DO	-10.17	0.70	10.04	10.01	7.16	41.9
HCG06a	ET (0)	DO	-12.22	0.04	10.90	<9.35 ^d	<6.77 ^d	<48.4
HCG06b	LT (2)	DO	-12.06	0.07	10.86	9.80	7.02	51.6
HCG06c	ET (-5)	DO	-12.31	0.02	10.68	<9.16	<6.76	<50.2
HCG06d	LT (4)	DO	-10.86	0.08	9.77	8.73	6.07	28.9
HCG07a	LT (2)	DY	-10.67	2.09	10.94	10.60	7.37	45.1
HCG07b	ET (-2)	DY	-11.31	0.17	10.56	<9.13	<6.34	<22.7
HCG07c	LT (2)	DY	-10.22	1.55	10.40	10.11	7.42	42.3
HCG07d	LT (2)	DY	-10.56	0.28	10.02	9.31	6.67	28.0
HCG15a	ET (-2)	DO	-11.92	0.10	10.97	9.61	7.27	45.6
HCG15b	ET (-3)	DO	-12.36	0.02	10.77	<9.41	<6.40	<51.7
HCG15c	ET (-3)	DO	-12.97	0.01	11.11	<9.43	<6.37	<52.2
HCG15d	ET (-3)	DO	-11.27	0.07	10.11	8.86	6.30	34.9
HCG15e	LT (1)	DO	-11.56	0.06	10.39	8.83	6.45	35.4
HCG15f	LT (4)	DO	-9.875	0.33	9.37	9.32	6.77	23.5
HCG16a	LT (2)	DY	-10.92	1.05	10.92	10.02	6.94	35.8
HCG16b	LT (1)	DY	-12.22	0.05	10.97	10.47	7.39	43.8
HCG16c	LT (10)	DY	-9.17	11.5	10.25	11.09	7.30	33.2
HCG16d	LT (10)	DY	-10.27	1.16	10.35	10.94	7.02	31.8
HCG22a	ET (-5)	DO	-12.36	0.02	10.72	8.80	5.45	47.8
HCG22b	LT (-2)	DO	-11.52	0.01	9.64	<8.25	<4.92	<34.5
HCG22c	LT (8)	DO	-10.22	0.19	9.50	9.02	6.78	37.1
HCG25a	LT (5)	DO	-9.82	2.40	10.22	10.39	7.52	26.3
HCG25b	LT (1)	DO	-11.67	0.16	10.89	9.62	6.77	42.3
HCG25d	ET (-2)	DO	-11.17	0.09	10.12	<8.95	<5.35	<29.9
HCG25f	ET (-2)	DO	-10.92	0.07	9.84	<8.73	<5.09	<20.8
HCG37a	ET (-5)	DO	-11.17	1.46	11.32	<11.10	<7.99	<35.6
HCG37b	LT (3)	DO	-11.22	0.52	10.93	10.36	7.27	50.6
HCG37c	ET (0)	DO	-11.47	0.05	10.19	9.10	6.79	41.1
HCG37d	LT (8)	DO	-10.86	0.02	9.32	9.21	6.73	45.4
HCG37e	ET (-5)	DO	-10.86	0.04	9.50	8.86	6.45	36.3
HCG38a	LT (4)	DY	-10.56	1.78	10.80	10.54	7.52	39.9
HCG38b	LT (7)	DY	-10.52	1.66	10.73	10.59	7.59	39.7
HCG38c	LT (10)	DY	-10.47	1.02	10.51	10.26	7.78	37.5
HCG40a	ET (-5)	DO	-11.86	0.13	10.97	9.31	7.04	37.3
HCG40b	ET (0)	DO	-12.06	0.05	10.80	9.56	6.72	42.1
HCG40c	LT (3)	DO	-11.11	0.67	10.97	10.48	7.56	47.2
HCG40d	LT (1)	DO	-10.86	0.65	10.67	10.43	7.11	49.0
HCG40e	LT (1)	DO	-11.27	0.09	10.27	9.53	7.47	41.0
HCG44a	LT (1)	DY	-11.67	0.07	10.55	9.78	6.84	41.9
HCG44b	ET (-5)	DY	-12.27	0.01	10.31	<8.47	<5.21	<40.1
HCG44c	LT (1)	DY	-10.06	0.15	9.24	9.35	6.21	39.3
HCG44d	LT (5)	DY	-9.32	0.28	8.75	9.25	6.50	24.7
HCG47a	LT (3)	DY	-10.56	3.44	11.11	10.77	7.60	43.6
HCG47b	ET (-2)	DY	-11.36	0.20	10.68	<9.06	<6.53	<22.3
HCG47c	LT (3)	DY	-10.67	0.28	10.11	9.39	6.26	21.9
HCG47d	LT (2)	DY	-10.52	0.53	10.26	9.36	5.60	32.3
HCG54a	LT (8)	DY	-10.77	0.01	8.26	8.02	4.71	36.4
HCG54b	LT (10)	DY	-9.97	0.01	8.25	8.28	5.22	33.5
HCG54c	LT (10)	DY	-9.47	0.01	7.59	7.86	5.49	28.7
HCG54d	LT (10)	DY	-9.67	0.01	7.32	7.35	4.58	30.6
HCG55a	ET (0)	DO	-11.56	0.27	11.00	<9.44	<6.02	<33.0
HCG55b	ET (-5)	DO	-12.42	0.03	10.92	10.14	7.58	49.7

Notes. ^(a) With LT we indicate the late-type galaxies – spirals ($1 \leq T \leq 7$) and irregulars ($T \geq 8$) – and with ET the early-type ones – ellipticals ($T \leq -4$) and lenticulars ($-3 \leq T \leq 0$). ^(b) Group dynamical state (DY: dynamically young, DO: dynamically old). ^(c) Temperature of the dust in the ambient ISM and the stellar birth clouds ($T_{\text{dust}} = f_{\mu} T_{\text{cold}}^{\text{ISM}} + [1 - f_{\mu}] T_{\text{warm}}^{\text{BC}}$, where f_{μ} is the fraction of the total dust luminosity contributed from the ambient ISM). ^(d) Upper limits mark the dust masses and luminosities of the galaxies not detected in the *Herschel* bands. ^(†) Galaxy HCG56b is flagged because it hosts a powerful AGN that dominates its mid-IR colours.

Table 3. continued.

Galaxy	Morphology ^a	Group type ^b	$\log sSFR$ (yr^{-1})	SFR ($M_{\odot} \text{yr}^{-1}$)	$\log M_{\text{star}}$ (M_{\odot})	$\log L_{\text{IR}}$ (L_{\odot})	$\log M_{\text{dust}}$ (M_{\odot})	T_{dust}^c (K)
HCG55c	ET (-5)	DO	-10.92	1.32	11.06	<10.79	<8.18	<41.8
HCG55d	ET (-2)	DO	-11.31	0.16	10.55	<9.24	<6.15	<42.2
HCG56a	LT (5)	DO	-10.67	0.57	10.42	9.97	7.22	45.6
HCG56b [†]	ET (-2)	DO	-11.56	0.13	10.67	10.08	6.70	45.4
HCG56c	ET (0)	DO	-12.36	0.01	10.64	<9.05	<6.14	<36.5
HCG56d	ET (0)	DO	-10.56	0.39	10.17	10.07	6.80	47.2
HCG56e	ET (-2)	DO	-10.22	0.24	9.62	9.46	6.91	28.5
HCG57a	LT (2)	DO	-11.81	0.32	11.31	10.24	7.60	48.5
HCG57b	LT (3)	DO	-11.42	0.37	11.01	9.79	7.45	49.2
HCG57c	ET (0)	DO	-12.97	0.01	10.94	<9.27 ^d	<6.19 ^d	42.4
HCG57d	LT (3)	DO	-10.11	1.74	10.39	10.18	6.89	39.4
HCG57e	ET (-2)	DO	-11.97	0.04	10.59	9.52	6.94	49.9
HCG57f	ET (-3)	DO	-12.97	0.01	10.76	<9.07	<6.21	51.8
HCG57g	ET (-3)	DO	-11.86	0.06	10.68	<8.84	<6.62	22.3
HCG57h	LT (3)	DO	-11.06	0.10	10.10	9.19	6.32	44.8
HCG59a	ET (-5)	DY	-12.97	0.01	10.38	9.78	6.46	54.7
HCG59b	ET (-2)	DY	-11.97	0.01	9.88	<8.30	<5.07	42.8
HCG59c	LT (5)	DY	-10.27	0.10	9.24	8.95	6.38	25.4
HCG59d	LT (10)	DY	-9.87	0.05	8.66	8.96	6.14	41.4
HCG68a	ET (-2)	DO	-10.97	0.39	10.56	8.94	5.97	37.4
HCG68b	ET (-2)	DO	-11.92	0.06	10.69	9.22	6.48	48.6
HCG68c	LT (3)	DO	-12.97	0.01	10.93	10.14	7.23	54.3
HCG68d	ET (-2)	DO	-12.27	0.01	9.96	8.11	5.18	45.9
HCG68e	ET (0)	DO	-11.56	0.01	9.67	<7.68	<5.21	36.5
HCG71a	LT (6)	DY	-10.56	2.05	10.89	10.35	7.70	42.7
HCG71b	LT (3)	DY	-10.22	2.09	10.56	10.64	7.45	40.4
HCG71c	LT (3)	DY	-10.02	0.49	9.71	9.49	6.95	24.4
HCG75a	ET (-5)	DO	-11.61	0.36	11.17	<9.36	<5.67	27.9
HCG75b	LT (3)	DO	-12.52	0.01	10.54	<8.71	<5.60	35.6
HCG75c	ET (-2)	DO	-11.86	0.08	10.77	9.60	6.83	40.8
HCG75d	LT (7)	DO	-10.56	1.01	10.57	10.22	7.66	35.2
HCG75e	LT (1)	DO	-11.47	0.11	10.55	<9.04	<5.51	28.2
HCG75f	ET (-2)	DO	-12.11	0.04	10.72	9.89	7.11	52.7
HCG79a	ET (5)	DO	-11.56	0.07	10.46	9.80	6.63	50.5
HCG79b	ET (-2)	DO	-11.47	0.06	10.27	9.59	6.34	51.4
HCG79c	ET (-2)	DO	-12.06	0.01	9.78	8.48	5.25	47.5
HCG79d	LT (5)	DO	-10.36	0.06	9.03	8.95	6.43	41.4
HCG82a	ET (-2)	DO	-12.36	0.08	11.30	<9.72	<6.59	39.1
HCG82b	ET (-2)	DO	-12.11	0.09	11.10	9.94	7.04	51.5
HCG82c	LT (10)	DO	-9.97	4.09	10.57	10.83	7.55	40.1
HCG82d	ET (0)	DO	-12.27	0.01	10.48	<8.76	<6.83	46.3
HCG91a	LT (4)	DY	-9.97	11.8	11.06	11.06	7.84	39.9
HCG91b	LT (5)	DY	-9.97	4.75	10.60	10.81	7.50	36.6
HCG91c	LT (3)	DY	-9.92	2.19	10.27	10.09	7.46	17.5
HCG91d	ET (-2)	DY	-10.97	0.32	10.50	<9.29	<5.59	27.6
HCG92b	LT (4)	DO	-11.17	0.52	10.89	9.34	6.97	31.3
HCG92c	LT (4)	DO	-12.12	0.08	11.06	10.27	7.27	43.1
HCG92d	ET (-5)	DO	-12.22	0.05	10.97	<8.40	<6.33	36.5
HCG92e	ET (-5)	DO	-12.22	0.03	10.82	<8.27	<6.27	26.9
NGC 7320c	ET (0)	DO	-12.02	0.01	10.07	8.94	6.03	43.4
HCG95a	ET (-5)	DY	-11.36	0.44	11.01	<9.56	<6.28	32.9
HCG95b	LT (6)	DY	-10.11	3.73	10.71	10.77	7.72	30.9
HCG95c	LT (9)	DY	-10.02	2.40	10.47	10.51	7.65	30.7
HCG95d	LT (3)	DY	-11.11	0.46	10.79	10.09	7.43	43.8
HCG96a	LT (4)	DY	-10.06	17.4	11.31	11.38	7.82	40.5
HCG96b	ET (-3)	DY	-11.67	0.15	10.89	<9.55	<6.34	38.4
HCG96c	LT (1)	DY	-10.77	0.94	10.72	10.37	6.99	39.5
HCG96d	LT (10)	DY	-9.32	0.68	9.13	9.71	6.32	25.1
HCG100a	LT (0)	DY	-10.31	2.05	10.60	10.60	7.11	45.6
HCG100b	LT (1)	DY	-9.67	0.48	9.33	9.88	6.72	39.5
HCG100c	LT (3)	DY	-9.77	0.92	9.73	9.52	6.59	42.1
HCG100d	LT (6)	DY	-11.42	0.01	9.06	9.00	6.11	53.0

Table 4. Derived physical parameters of the galaxies in the KINGFISH sample based on the SED modelling.

Galaxy	Morphology ^a	log <i>sSFR</i> (yr ⁻¹)	<i>SFR</i> (<i>M</i> _⊙ yr ⁻¹)	log <i>M</i> _{star} (<i>M</i> _⊙)	log <i>L</i> _{IR} (<i>L</i> _⊙)	log <i>M</i> _{dust} (<i>M</i> _⊙)	<i>T</i> _{dust} (K)
NGC 0337	LT	-9.62	1.62	9.77	10.27	7.26	35.2
NGC 0628	LT	-10.02	1.20	10.09	10.10	7.50	26.3
NGC 0855	LT	-10.06	0.03	8.59	8.47	5.79	34.7
NGC 0925	LT	-10.06	0.30	9.53	9.43	7.16	25.7
NGC 1097	LT	-10.17	5.88	10.92	10.81	7.94	30.9
NGC 1266	ET	-10.27	0.46	9.95	10.54	6.70	34.9
NGC 1291	LT	-11.42	0.23	10.80	9.52	7.17	32.7
NGC 1316	LT	-12.97	0.04	11.64	10.10	6.95	27.0
NGC 1377	ET	-10.02	0.85	9.96	10.25	6.26	55.7
IC0342	LT	-10.67	0.01	8.61	8.46	5.67	30.9
NGC 1482	LT	-10.31	1.28	10.43	10.89	7.41	39.7
NGC 1512	LT	-10.61	0.42	10.18	9.56	7.36	24.7
NGC 2146	LT	-10.31	1.34	10.44	10.90	7.32	41.2
HoII	LT	-9.37	0.01	7.55	7.53	4.43	44.5
DDO053	LT	-9.32	0.01	7.00	7.00	3.00	42.0
NGC 2798	LT	-9.52	2.81	9.96	10.56	7.00	43.2
NGC 2841	LT	-11.11	0.24	10.51	9.62	7.25	23.2
NGC 2915	LT	-10.52	0.01	8.68	8.03	5.25	31.9
HoI	LT	-9.82	0.01	7.00	7.00	4.01	31.1
NGC 2976	LT	-10.52	0.01	7.00	7.00	3.00	25.9
NGC 3049	LT	-9.72	0.56	9.44	9.65	6.79	45.1
NGC 3077	LT	-10.97	0.01	7.00	7.00	3.18	35.9
M81dwB	LT	-10.31	0.01	7.38	7.00	4.66	35.9
NGC 3190	LT	-11.86	0.03	10.47	9.77	6.98	25.9
NGC 3184	LT	-10.17	0.53	9.88	9.67	7.11	30.6
NGC 3198	LT	-10.22	0.38	9.81	9.56	7.03	34.9
IC 2574	LT	-9.82	0.01	7.27	7.00	4.63	37.4
NGC 3265	ET	-10.17	0.13	9.28	9.38	6.13	41.6
NGC 3351	LT	-10.56	0.69	10.42	9.97	7.19	29.3
NGC 3521	LT	-10.61	1.62	10.82	10.59	7.74	24.9
NGC 3621	LT	-10.81	0.48	10.48	10.35	7.57	43.9
NGC 3627	LT	-10.22	1.81	10.52	10.52	7.45	31.1
NGC 3373	LT	-8.97	0.25	8.35	8.88	5.82	42.6
NGC 3938	LT	-9.92	0.64	9.69	9.87	7.15	27.7
NGC 4236	LT	-10.22	0.01	7.00	7.00	3.00	34.8
NGC 4254	LT	-9.67	21.3	11.18	11.34	8.39	31.9
NGC 4321	LT	-10.27	5.49	11.01	10.89	8.11	29.1
NGC 4536	LT	-9.82	6.30	10.63	10.85	7.88	38.1
NGC 4559	LT	-9.97	0.97	9.88	9.85	7.34	28.8
NGC 4569	LT	-10.72	0.02	9.07	8.79	5.97	30.1
NGC 4579	LT	-11.36	0.40	10.97	10.15	7.58	22.6
NGC 4625	LT	-9.92	0.07	8.82	8.62	6.11	26.0
NGC 4631	LT	-9.62	2.63	10.02	10.47	7.59	29.9
NGC 4725	LT	-10.92	1.17	10.98	10.14	7.84	24.4
NGC 4736	LT	-10.67	0.38	10.23	9.57	6.57	27.1
NGC 4826	LT	-11.06	0.15	10.25	9.67	6.53	31.8
NGC 5055	LT	-10.61	0.79	10.55	10.14	7.48	26.9
NGC 5398	LT	-9.32	0.37	8.91	9.33	6.61	43.1
NGC 5457	LT	-9.72	0.75	9.59	9.71	7.11	31.2
NGC 5408	LT	-9.97	0.05	8.74	8.64	5.06	52.6
NGC 5474	LT	-9.97	0.03	8.48	8.17	5.81	34.7
NGC 5713	LT	-10.11	2.75	10.57	10.72	7.42	37.7
NGC 5866	ET	-12.06	0.01	10.10	9.26	6.28	27.3
NGC 6946	LT	-9.72	0.03	8.19	8.40	5.56	28.3
NGC 7331	LT	-10.72	0.95	10.71	10.32	7.59	23.5
NGC 7793	LT	-9.47	0.21	8.81	9.07	6.64	25.3

Notes. ^(a) LT mark the late-type galaxies and ET the early-type ones.

cold dust, which was completely unconstrained, can now be accurately estimated.

Since the stellar masses and the star formation rate values of the galaxies are slightly modified after including the far-IR data, we checked whether our findings from Paper II are

consistent with the estimations of this work. Nevertheless, to make that comparison we have to take one more change into account. We note that the current version of MAGPHYS uses the [Bruzual & Charlot \(2003\)](#) stellar-population synthesis models (hereafter BC03), rather than the Charlot & Bruzual (2007)

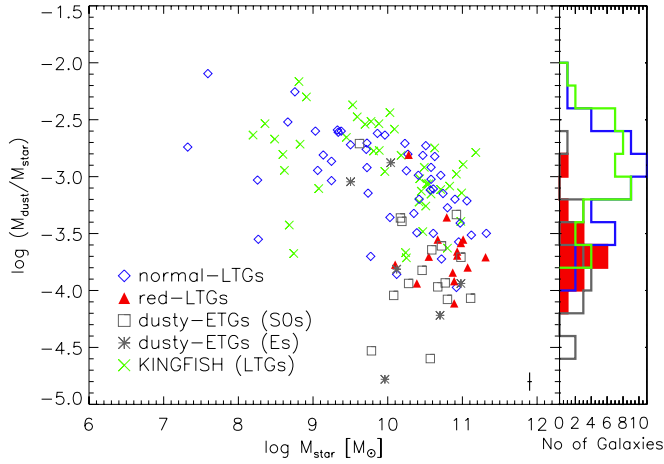


Fig. 4. Dust-to-stellar mass ratios as a function of the stellar mass for the normal-LTGs in dynamically young and old groups (denoted by empty blue diamonds), the red-LTGs (marked with filled red triangles), the dusty ETGs (S0) are marked with grey squares and Es with grey stars), and the KINGFISH LT galaxies (marked with green x). Typical uncertainties are indicated using error bars in the bottom right corner.

libraries (hereafter CB07), which were used at the time we estimated those parameters in Paper II. Zibetti et al. (2012) show that the latter overestimate the impact of the thermally pulsating asymptotic giant branch (TP-AGB) stars, artificially increasing the near-IR fluxes of the stellar evolution models, which in reality are closer to the BC03 model estimates. To investigate whether these biases affected our previous findings, we re-examine the distributions of these parameters as derived in our present study. We notice that the stellar masses of the dynamically old red-LTGs have a median value of $\sim 7.76^{+9.74}_{-4.32} \times 10^{10} M_{\odot}$. This is significantly higher than the median masses of the normal-LTGs found in the groups and the field (displaying P_{KS}^4 less than 0.1% in all cases), which have median stellar masses of $\sim 1.70^{+5.17}_{-1.27} \times 10^{10} M_{\odot}$ and $1.51^{+10.0}_{-1.31} \times 10^{10} M_{\odot}$, respectively. These results are in excellent agreement with our previous findings. Examining the SFR distributions of the red-LTGs in dynamically old groups, we notice that they display significantly lower SFRs ($P_{KS} \sim 10^{-4}\%$) than the normal-LTGs in the other subsamples. More specifically, the former are found to have up to an order of magnitude lower SFRs (with a median SFR of $\sim 0.09 \pm 0.21 M_{\odot} \text{ yr}^{-1}$) than normal-LTGs of the same mass range found in groups and the field (with $1.05 \pm 0.22 M_{\odot} \text{ yr}^{-1}$ and $0.96 \pm 0.22 M_{\odot} \text{ yr}^{-1}$, respectively). Additionally, we find that the SFR per unit mass (or specific SFR; sSFR) of the red-LTGs displays significantly lower values ($0.37^{+1.06}_{-0.28} \times 10^{-11} \text{ yr}^{-1}$) than those of the normal-LTGs in groups and the field ($6.02^{+16.4}_{-5.18} \times 10^{-11} \text{ yr}^{-1}$ and $5.37^{+19.5}_{-5.02} \times 10^{-11} \text{ yr}^{-1}$, respectively), which is precisely what we concluded in Paper II.

3. Results

3.1. The dust masses of the HCG late-type galaxies

Interstellar dust is produced during the last stages of stellar evolution. The outflows of stellar winds and supernova explosions enrich the ISM with dust grains of various sizes. There the dust

grains are mixed well with the atomic gas, leading to typical gas-to-dust mass ratios of $\sim 150\text{--}200$ (Draine 2007; Thomas et al. 2004). Once in the ISM, dust grains can grow by accretion, but are also subject to destruction (from interstellar shocks or hot X-ray plasmas). There are several mechanisms that can destroy dust grains, such as the thermal sputtering and grain-grain collisions (Draine 2003). Cortese et al. (2012) showed that in a “closed-box” model, the dust-to-stellar mass ratio decreases with decreasing gas fraction. The reason is that as galaxies build up their stellar mass, consuming their available gas, they decrease their star formation activity, and as a consequence they replenish the ISM with new dust and slow down. This is also consistent with the results of da Cunha et al. (2010a), who found that the dust-to-stellar mass ratios anti-correlate with the sSFRs and, as a result, with the $[NUV - r]$ colours in LTGs.

This anti-correlation between the dust-to-stellar mass ratios and the stellar masses is also observed in the HCG galaxies of our sample (see Fig. 4). We can see that the most massive normal-LTGs, with $M_{\text{star}} > 10^{10} M_{\odot}$, display nearly 30% lower dust-to-stellar mass ratios compared to the less massive ones. However, what is worth noticing here is that for a given stellar mass, the red-LTGs display significantly lower ($P_{KS} < 10^{-6}\%$) dust masses than the normal-LTGs in HCGs and in the field of the same mass range, with typical dust-to-stellar mass ratios of $1.9 \pm 1.0 \times 10^{-4}$, $9.5 \pm 3.8 \times 10^{-4}$, and $10.5 \pm 5.4 \times 10^{-4}$, respectively. In the upper panel of Table 5 we present the fraction of dust mass the red-LTGs are missing with respect to the average dust-to-stellar mass ratio shown by normal-LTGs. This fraction ranges from ~ 30 to 80%, with the only exceptions galaxies HCG40e and HCG95d, whose dust-to-stellar mass ratios are similar to those of normal-LTGs.

Cortese et al. (2012) show that most HI-deficient galaxies in the Virgo cluster were those with the lowest dust-to-stellar mass ratios. Using the results from Verdes-Montenegro et al. (2001), we plot in Fig. 5 the dust-to-stellar mass ratios of the LTGs in our sample versus their HI gas deficiencies, defined as $\text{Def}_{\text{HI}} = \log [M(\text{HI})_{\text{pred}}] - \log [M(\text{HI})_{\text{obs}}]$, where the predicted HI masses are estimated from the optical luminosity L_B as explained in Haynes & Giovanelli (1984). Despite the small number of available galaxies with measurements of HI deficiencies, red-LTGs tend to be more deficient than the normal-LTGs. What mechanisms are responsible for stripping gas and dust in these galaxies? Verdes-Montenegro et al. (2001) and Borthakur et al. (2010) suggest that the atomic gas was removed from these galaxies as a result of tidal stripping. Other processes that could strip gas from galaxies have also been considered. Rasmussen et al. (2008) show that although many evolved HCGs contain extended soft-X-ray emission, ram-pressure stripping is insufficient and cannot explain the observed HI deficiencies in all but the most X-ray bright groups. Another possibility was explored by Cluver et al. (2013). These authors noted that HI removed from previous tidal interactions would remain confined to the intragroup medium, (as suggested by deep GBT observations by Borthakur et al. 2010), and these clouds could continue to collide with the galaxies as they move through the group, perhaps further stripping material from the galaxies. HCG92 (Stephan’s Quintet) is one example where a galaxy has collided with previously tidally stripped HI plume, creating a powerful molecular-rich shock. In that system almost all the gas is stripped from the galaxies and lies in the IGM (see Guillard et al. 2012; Appleton et al. 2013).

In Figs. 6 and 7, we plot the atomic and molecular gas-to-dust mass ratios versus the stellar masses of the galaxies in our sample, respectively. Using the measurements of

⁴ The Kolmogorov-Smirnov test probability. If less than 1%, the two distributions can be considered as significantly different.

Table 5. Diffuse cold dust emission around red late-type (red-LTGs) and the dusty early-type (dusty-ETGs) galaxies, as well as normal HCG late-type galaxies displaying extended dust features.

Galaxy-ID	Stellar disk ^a (arcsec)	Dust disk ^b (arcsec)	Extended flux (Jy)	Fraction of the total flux ^c	$M_{D,def.}^d$ $\times 10^6 (M_{\odot})$	Fraction of dust deficit ^e	M_{ExtD}^f $\times 10^6 (M_{\odot})$
Red late-type galaxies							
HCG06b	25	66	0.018	14%	19.67 ± 7.26	65%	0.28–0.10
HCG15e	28	48	0.008	18%	10.56 ± 3.90	79%	0.05–0.02
HCG16b ^g	39	24	–	–	11.64 ± 4.29	32%	–
HCG25b	34	34	no extend	0%	25.41 ± 9.38	81%	0.00
HCG37b	32	42	0.080	8%	14.89 ± 5.49	44%	0.44–0.16
HCG40d	22	42	0.015	19%	8.51 ± 3.14	39%	0.08–0.03
HCG40e	22	42	0.027	10%	no deficit	0%	0.14–0.05
HCG44a	107	107	no extend	0%	10.57 ± 3.90	60%	0.00
HCG57a	24	32	0.150	16%	24.15 ± 8.91	37%	1.37–0.49
HCG57b	30	40	0.088	22%	9.84 ± 3.63	26%	0.86–0.31
HCG57h ^g	19	16	–	–	6.05 ± 2.23	74%	–
HCG68c	66	108	1.110	15%	16.33 ± 6.03	49%	0.71–0.26
HCG92b	22	55	0.834 ^h	98%	22.03 ± 8.13	70%	6.10–2.21
HCG92c	36	55	0.070 ^h	41%	23.88 ± 8.12	56%	0.38–0.14
HCG95d	17	27	0.031	15%	no deficit	0%	0.57–0.20
Dusty lenticular galaxies							
HCG15a ^g	48	29	–	–	66.22 ± 24.44	52%	–
HCG37c	12	19	0.023	34%	3.20 ± 1.18	34%	0.15–0.05
HCG40b	17	–	–	–	16.52 ± 6.09	61%	–
HCG55b	17	20	0.014	7%	no deficit	0%	0.41–0.20
HCG56b ^{g,†}	23	15	–	–	–	–	–
HCG56d	19	24	0.013	9%	no deficit	0%	0.11–0.04
HCG56e	15	18	0.004	5%	no deficit	0%	0.03–0.01
HCG57e	22	28	0.020	14%	8.18 ± 3.02	44%	0.19–0.07
HCG68a ^g	51	34	–	–	12.41 ± 4.58	68%	–
HCG75c-d	18-20	51	0.051	16%	24.38 ± 8.99	95%	0.92–0.33
HCG75f	20	29	0.026	18%	no deficit	0%	0.53–0.19
HCG79a	21	27	0.067	16%	12.85 ± 4.74	85%	0.17–0.06
HCG79b	35	37	0.026	5%	no deficit	0%	0.06–0.02
HCG79c	14	14	no extend	0%	0.06 ± 0.02	2%	0.00
HCG82b ^g	24	18	–	–	26.91 ± 9.93	59%	–
NGC7320c	18	28	0.041	19%	5.38 ± 1.98	68%	0.18–0.06
Dusty elliptical galaxies							
HCG04d	18	34	0.020	17%	no deficit	0%	0.16–0.06
HCG15d ^g	28	19	–	–	6.44 ± 2.37	76%	–
HCG22a ^g	43	19	–	–	23.17 ± 8.55	99%	–
HCG37e	11	21	0.064	16%	0.09 ± 0.03	3%	0.31–0.12
HCG40a	28	–	–	–	25.52 ± 9.42	70%	–
HCG68b ^g	55	40	–	–	19.68 ± 7.26	87%	–
HCG68d	25	25	no extend	0%	6.31 ± 2.33	98%	0.00
Normal spiral galaxies							
HCG95c	12	32	0.282	50%	no deficit	0%	4.52–1.62
HCG100c	24	32	0.050	18%	12.68 ± 6.97	9%	0.18–0.07

Notes. ^(a) Size of the *Spitzer*/IRAC 3.6 μm stellar disk convolved with the beam of SPIRE 250 μm . ^(b) Size of the dusty disk at 250 μm . ^(c) Total flux is the sum of the measured fluxes of the stellar disk, plus the diffuse emission. ^(d) Dust mass deficiency as described in Sect. 3.1 ^(e) Fraction of the dust deficit ($M_{D,def}/[M_{dust} + M_{D,def}]$). ^(f) The diffuse dust masses were estimated using Eq. (1) at 250 μm , for $\beta = 1.5$ and T ranging between 15 and 20 K. ^(g) Galaxies with dust disk reduced in comparison with the stellar one. ^(h) The diffuse dust flux density can be different for HCG92b and HCG92c depending on where we assign the dusty filament. ^(†) Galaxy HCG56b is flagged because it host a powerful AGN which dominates its mid-IR colours.

Verdes-Montenegro et al. (2001), Martinez-Badenes et al. (2012) and Leon et al. (1998), we notice that the red-LTGs exhibit the lowest atomic gas-to-dust mass ratios (~ 14) among the overall population of LTGs (~ 190). On the other hand, when we examine the molecular gas-to-dust mass ratios, we cannot see any difference between the different LTG sub-samples ($M_{H_2}/M_{dust} \sim 200$). Cortese et al. (2012) found similar results for galaxies in the Virgo cluster and suggest that it is easier for the dynamical interactions to strip the atomic gas out of the galaxies' disks,

rather than their molecular gas and interstellar dust. They attributed this to the fact that conversely to the HI disk, which extends nearly two times farther than the stellar one, the dust and the molecular gas are more centrally concentrated (i.e. see Thomas et al. 2004). This could be caused by metallicity gradients in the outskirts of galaxies. Galaxy interactions will strip the HI in these regions, which is poorer in interstellar dust. However, dust plays a key role in the formation of H_2 , thus keeping the molecular gas-to-dust mass ratio constant.

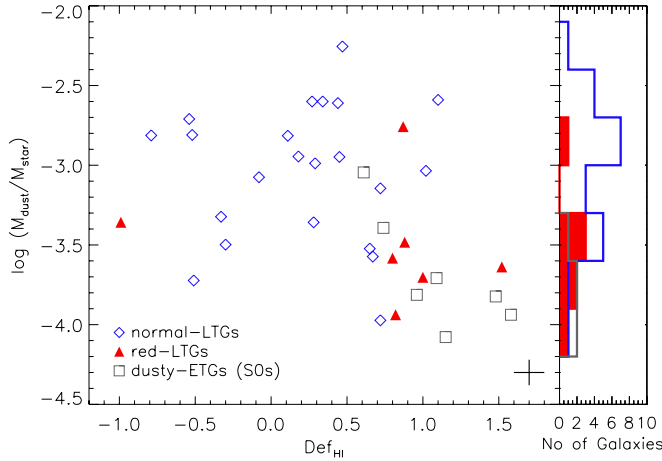


Fig. 5. Dust-to-stellar mass ratios of the galaxies in our sample versus the HI gas deficiencies. Symbols as in Fig. 4. Typical uncertainties are indicated using error bars in the bottom right corner.

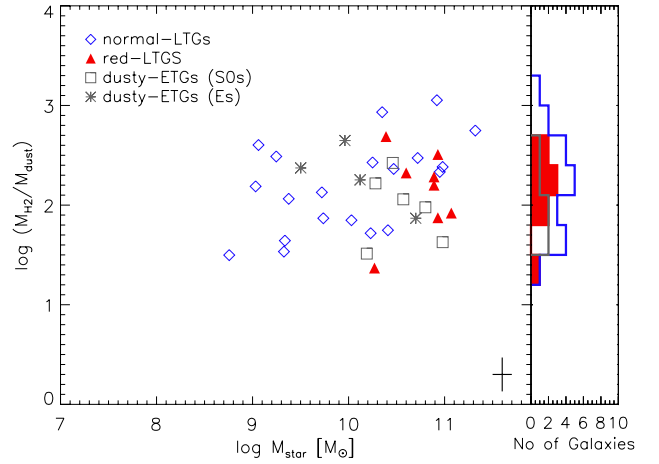


Fig. 7. Molecular gas-to-dust mass ratios as a function of the stellar mass. Symbols as in Fig. 4. Typical uncertainties are indicated using error bars in the bottom right corner.

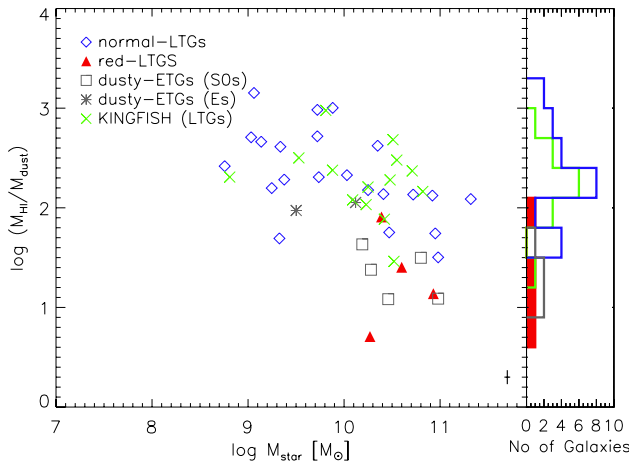


Fig. 6. Atomic gas-to-dust mass ratios as a function of the stellar mass. Symbols as in Fig. 4. Typical uncertainties are indicated using error bars in the bottom right corner.

3.2. Dust masses of HCG early-type galaxies

The detection rate of ETGs in the far-IR is noticeably different between dynamically young and old groups. In our sample, none of the seven ETGs in dynamically young groups were detected by *Herschel*, and yet 40% of the 43 ETGs in dynamically old groups were detected in all bands of *Herschel* (hereafter dusty-ETGs). Almost 70% of these ETGs are classified as lenticulars and 30% as ellipticals. In Figs. 4, 6, and 7 we present the dust-to-stellar, as well as the atomic and molecular gas-to-dust mass ratios of these dusty-ETGs. We can see that these galaxies display very similar ratios to those of red-LTGs, also according to statistical tests having $P_{KS} > 20\%$ in all cases.

In Fig. 8, we plot the dust mass as a function of the stellar mass of the dusty ETGs, but this time by separating them into lenticulars ($0 \geq T \geq -3$) and ellipticals ($T \leq -4$). Galaxies that were not detected in all bands of *Herschel* are marked with upper limits, since, as we showed in Sect. 2.3, these bands are crucial for estimating of their dust masses. The large dispersion in the upper limits is a result of the differences in integration times and distances to these objects. The dust masses of the dusty lenticulars appear to correlate with their stellar masses

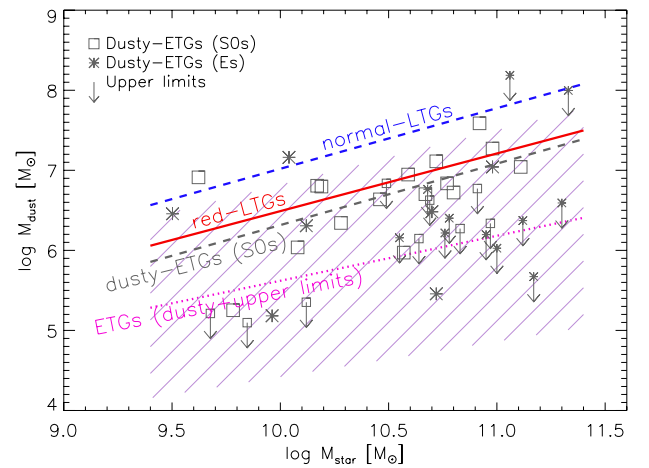


Fig. 8. Dust versus the stellar masses for the early-type galaxies in groups. Galaxies under the detection limit of PACS and SPIRE bands are marked with upper limits. Lenticulars (S0) are marked by grey squares, ellipticals (E) by grey stars. The dashed blue and the solid red lines indicate the linear fits of the “blue cloud” and the red-LTGs, respectively. The dashed grey line is the linear fit of the dusty lenticulars; we did not include a fit for the dusty ellipticals due to the complete absence of any correlation between their dust and stellar masses. The dotted magenta line indicates the linear fitting of all ETGs including the ones that are upper limits, as estimated from the Buckley-James survival analysis method. The magenta shaded area corresponds to the uncertainties of the survival analysis method.

($R = 0.58^5$), which is consistent with what we have seen in the various LTG sub-samples ($R = 0.74$ and 0.86 for the red and normal-LTGs, respectively). This could be attributed to the fact that as galaxies evolve and increase their stellar content, more and more stars enrich their ISM with dust. In addition to what we have seen in the previous figures, dusty lenticulars display similar dust-to-stellar mass ratios to those of the red-LTGs of the same stellar mass range ($1.5 \pm 0.5 \times 10^{-4}$ and $1.9 \pm 1.0 \times 10^{-4}$, respectively), described in Sect. 3.1. The fraction of the dust deficit with respect to their stellar mass is presented in the medium

⁵ The Pearson correlation coefficient measures the linear correlation between two variables, where 1 is the total linear correlation and 0 is no correlation.

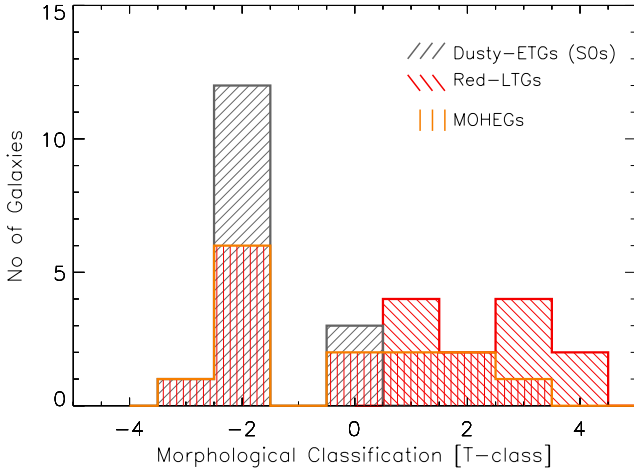


Fig. 9. Morphological classification (T -class) of the red late-type galaxies (in red), the dusty lenticulars (in grey) and the galaxies classified as MOHEGs (in orange).

panel of Table 5. Is it possible that these galaxies are somehow connected from an evolutionary perspective?

Examining their stellar masses and specific star formation rates we see that they are very similar to those of the red-LTGs ($3.89^{+6.34}_{-2.41} \times 10^{10} M_{\odot}$ and $0.14^{+0.40}_{-0.10} \times 10^{-11} \text{ yr}^{-1}$, respectively), and significantly different from those observed in the normal-LTGs (see the conclusions of Paper II). They both primarily occupy the UV-optical and IR green valley, with the dusty lenticulars being somewhat redder. Studying the morphological classifications of the HCG galaxies in Fig. 9, we can see that the red-LTGs have a T -class between 1–4, while dusty lenticulars have $T \leq 0$. Approximately 60% of the red-LTGs and dusty lenticulars – for which we had available mid-IR spectra – were identified as MOHEGs by Cluver et al. (2013). These results are consistent with the simulations of Bekki & Couch (2011), where the repetitive slow encounters experienced by a spiral galaxy in the compact environment of a group will result in the build-up of its bulge mass, by fuelling gas towards the centre. This will initially increase the stellar mass of the galaxy, and possibly its migration towards redder colours, due to the ageing of the stellar populations. Eventually, after many encounters the increase in the central bulge will transform the galaxy into a lenticular. Therefore, based on these findings we suggest that the red-LTGs and the dusty lenticulars are two contiguous galaxy populations in morphological and colour transformation from the green valley to the quiescent galaxy sequence. It is interesting that these same systems also tend to be the same galaxies as shown by Cluver et al. (2013) to contain unusually large warm molecular hydrogen emission. This might suggest a relationship between shocked molecular hydrogen and possible star formation quenching (see Konstantopoulos et al. 2014).

Contrary to what we have seen in the various LTG samples and the dusty lenticulars, the dust masses of the dusty ellipticals (see Fig. 8) do not correlate with their stellar masses ($R = 0.09$). One could argue that these galaxies might have experienced stronger winds and outflows than dusty lenticulars, which as a result expelled large amounts of dust out of their ISM. Even though this could explain the very low dust-to-stellar mass ratios of a couple of these dusty ellipticals, it does not agree with the fact that many of these galaxies exhibit ratios similar to or even higher than those of the dusty lenticulars and the red-LTGs. In addition, we can see that their sSFRs are significantly higher

than those of the remaining ellipticals in groups with no detected far-IR emission ($1.35 \times 10^{-12} \text{ yr}^{-1}$ and $\leq 0.48 \times 10^{-12} \text{ yr}^{-1}$, respectively). This implies that some dusty ellipticals may be experiencing a late star formation phase, possibly because they accrete a gas-rich dwarf galaxy, which would make them appear as rejuvenated. In addition, their enhanced dust content could be a result of accretion from other group members and/or the intragroup medium, as well as from the last stage of star formation activity they are going through. Similar results have been observed by di Serego Alighieri et al. (2013) for elliptical galaxies in the Virgo cluster, as well as in galaxy pair Arp 94, where the elliptical galaxy NGC 3226 increased its dust content from its interaction with spiral galaxy NGC 3227 (Appleton et al., in prep.).

3.3. Diffuse cold dust in the intragroup medium

So far our results suggest that a significant fraction of the interstellar dust of the red-LTGs and dusty-ETGs was stripped out into the intragroup medium, but where is the missing dust? It is possible that some fraction of it could be still located near these galaxies. To explore this possibility, we have masked their stellar disks and measured the 3σ *Herschel*/SPIRE $250 \mu\text{m}$ extended emission, typically brighter than $\sim 20.1 \text{ mag arcsec}^{-2}$. To define the size of the stellar disk to be masked we convolved the *Spitzer*/IRAC $3.6 \mu\text{m}$ image to the size of the beam of SPIRE $250 \mu\text{m}$ and then carefully calculated the 3σ near-IR isophotal contours around each source down to a typical $3.6 \mu\text{m}$ brightness of $\sim 24.5 \text{ mag arcsec}^{-2}$. The results are presented in Cols. 2–5 of Table 5. In the majority of red-LTGs, 20% of their total $250 \mu\text{m}$ flux on average is extended and originates outside their stellar disks. The same holds for only a third of the dusty-ETG when an average of 18% of their $250 \mu\text{m}$ emission is extended. No extended emission is seen in normal-LTG, with HCG95c (see first panel of Fig. 10) and HCG100c being the only exceptions. In the second panel of Fig. 10 we present an example of extended emission in red-LTG HCG57b. On the other hand, there are nine galaxies – mostly ellipticals – where, in addition to the very high dust deficiencies they display, the extent of their dust disk is more than 20% smaller compared to their stellar one (see last panel of Fig. 10). Examining the SPIRE $250 \mu\text{m}$ contour maps of galaxies HCG15f and HCG95c (see Appendix A) we notice “dusty” bridges connecting them with their companions, HCG15d and HCG95a, which are in both cases the most massive galaxies in their groups. Moreover, the far-IR contours of the HCG16b and HCG79b reveal that their dust distributions are concentrated towards the closest members in their groups, leaving large areas of their stellar disks without dust.

To estimate the amount of mass of the extended dust (M_{ExtD}) in these systems, we use of a modified black-body, as presented in Taylor et al. (2005):

$$M_{\text{D}}[M_{\odot}] = 3.24 \times 10^{-44} \frac{f_{\nu}[\text{Jy}] D_L^2[\text{cm}^2] \exp\left(\frac{0.048 v_{\text{obs}}[\text{GHz}](1+z)}{T[\text{K}]}\right)}{(1+z) \cdot \left(\frac{v_{\text{obs}}[\text{GHz}](1+z)}{250}\right)^{(\beta+3)}} \quad (1)$$

where β is the dust emissivity index and T the expected dust temperature. The dust emissivity index varies between 0–2 depending on the size of the various dust grains. In Fig. 11, we notice that the dust mass of HCG92 can change by almost two orders of magnitude depending on the assumptions we make for β and T . Following the most recent *Herschel* and *Planck* observations,

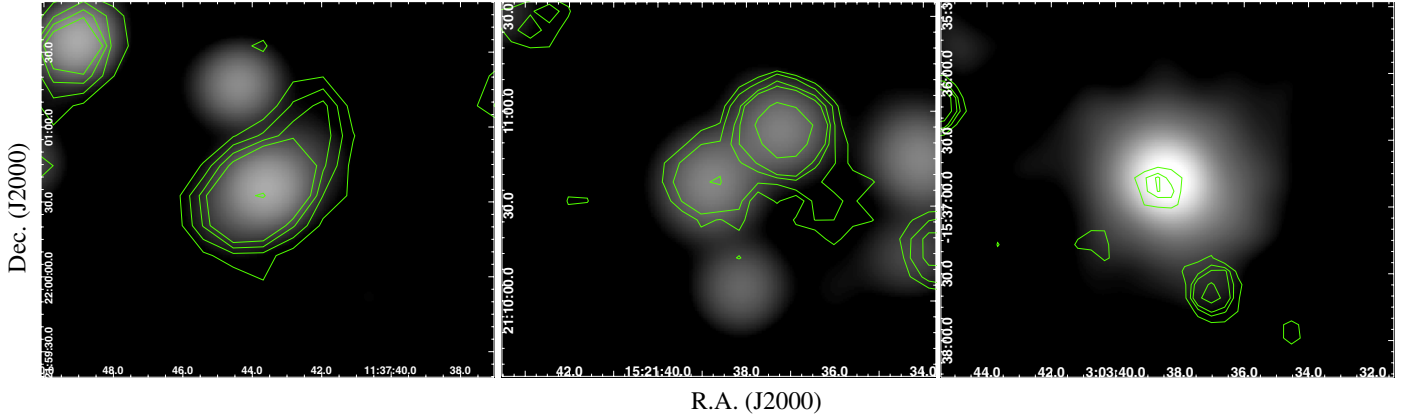


Fig. 10. *Spitzer*/IRAC 3.6 μm images of normal-LTG HCG95c, red-LTG HCG57b (*second panel*), and dusty-ETG HCG22a (*third panel*) convolved to the size of the beam of *Herschel*/SPIRE 250 μm . The contour maps are the *Herschel*/SPIRE 250 μm of the same groups. The five contours correspond to 3, 5, 7, 9, and 20 σ .

we adopt a $\beta = 1.5$, which was shown to represent the dust emissivity better in normal star forming galaxies (Boselli et al. 2012; Planck Collaboration XXIV. 2011). In addition, a temperature range 15–20 K was chosen to estimate the dust mass. As an upper limit we used the ISM cold dust temperature of our galaxies derived from the model and as a lower limit the estimated temperature of the cold dust stream ~ 15 kpc from the centre of NGC5128 (Stickel et al. 2004). The results are presented in the last column of Table 5. As we see, the amount of extended dust we detect near our galaxies is not enough to explain the high dust deficiencies of these systems (presented in Col. 6 of the same table). Therefore, the question remains: where is the remaining dust? Is it located in the intragroup medium and if so, in what form, diffuse or clumpy?

In a preliminary analysis, discussed in Paper II, we attempted to investigate the contribution of each individual galaxy to the total far-IR emission of its group, as measured by IRAS (Allam et al. 1996), and identified several groups (mostly classified as dynamically old) in which diffuse cold intragroup dust might be present. Applying the same technique for the galaxies in our present sample, we have estimated the combined “synthetic” IRAS 60 and 100 μm flux densities of all group members, as predicted by our SED model, and compared them with the integrated values of each group measured by IRAS. We find that in at least in four groups (HCG16, HCG54, HCG79 and HCG92) there is an excess greater than 3 σ in the integrated IRAS emissions compared to what is measured by *Herschel* (see Table 6); the diffuse dust properties of HCG92 are presented in more detail in Guillard et al. (in prep.). Examining the IRAS scans (using SCANPI, an interactive software tool for inspecting the calibrated survey scans from IRAS) we confirmed the complete absence of any peculiar scans in the IRAS maps, which could be attributed to Galactic cirrus emission.

In the far-IR and submm images of HCG16, HCG54, HCG79, and HCG92, we noticed diffuse emission located in the space between the galaxies. Nevertheless, these could be background sources or artefacts created from the detectors and/or the reduction process. To investigate these possibilities, we first convolved all the *Herschel*/PACS and SPIRE images to the beam of SPIRE 500 μm . Mapping artefacts should not appear systematically at every *Herschel* band. In addition, we compared the remaining sources with our *Spitzer*/IRAC 3.6 μm images and the SDSS database and excluded the background sources. In Fig. 12 we present the *Spitzer*/IRAC “true” colour

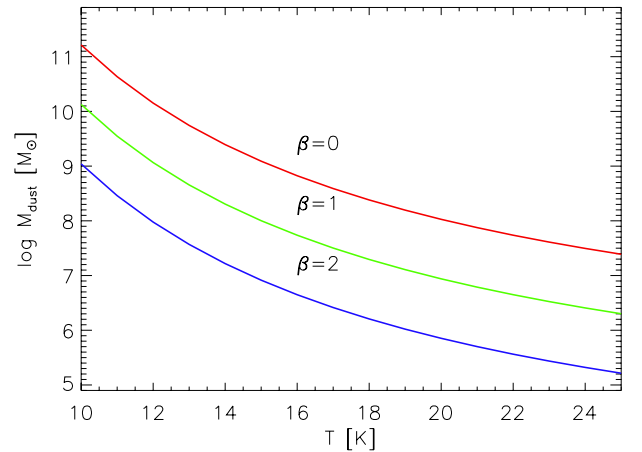


Fig. 11. Example of the dependence in the estimation of diffuse dust (Eq. (1)) by the dust emissivity index (β) and the dust temperature (T) in HCG92.

image of our groups, overlaid on the HI moment-0 (in red; for HCG16, HCG79, and HCG92 taken from Verdes-Montenegro et al. (2001) and for HCG54 from Verdes-Montenegro et al. (2002)). The *Herschel*/SPIRE 250 μm emission is also shown in green. In HCG16 extended dust envelopes are noticeable surrounding the galaxies HCG16a and HCG16b. In the remaining three groups, all galaxies are located in common dust envelopes. In addition, in HCG54 and HCG92, several “dust clumps” are found in the proximity of the group, and the compact dust structure located in the south-east of HCG92c also coincides with the location of a peak in the emission of atomic gas. What it is worth noticing here is absence of an one-to-one correlation between the atomic gas and the cold dust; for example, in HCG92c and HCG79b the dynamical interactions had swiped the interstellar gas out of their disks, but these galaxies still have extended cold dust disks.

The absence of dust in the regions where we detect large HI intragroup clouds could be attributed to the fact that dust emission is below the detection limit. Using the HI moment-0 maps from Verdes-Montenegro et al. (2001, 2002) and the following

Table 6. Groups with cold intragroup dust.

Group ID	Dynamical state	$f_{60,IRAS}^a$ (Jy)	$f_{60,pred.}^b$ (Jy)	Fraction of intragroup emission at $60 \mu m^b$	$f_{100,IRAS}^a$ (Jy)	$f_{100,pred.}^b$ (Jy)	Fraction of intragroup emission at $100 \mu m^b$	$M_{dust,galaxies} \times 10^6 (M_{\odot})$	$M_{D,IGM}^c \times 10^6 (M_{\odot})$
HCG16	DY	25.09 ± 0.11	26.77	6%	50.68 ± 0.06	31.03	63%	64.1	204.7–18.1
HCG54	DY	0.38 ± 0.03	0.25	52%	0.71 ± 0.14	0.39	82%	0.56	0.44–0.04
HCG79	DO	0.96 ± 0.09	0.41	134%	2.32 ± 0.20	1.14	103%	9.33	14.9–1.31
HCG92	DO	0.58 ± 0.06	0.33	76%	3.01 ± 0.30	1.26	139%	31.6	39.9–3.48

Notes. ^(a) Integrated IRAS fluxes from Allam et al. (1996) and Sanders et al. (2003) for each group, upper limits are not included. ^(b) Predicted “synthetic” flux for the whole group by adding the corresponding values of all group members estimated using their SED fit. ^(c) The intragroup dust masses were estimated using Eq. (1) at $100 \mu m$, for $\beta = 1.5$ and T ranging between 15–20 K.

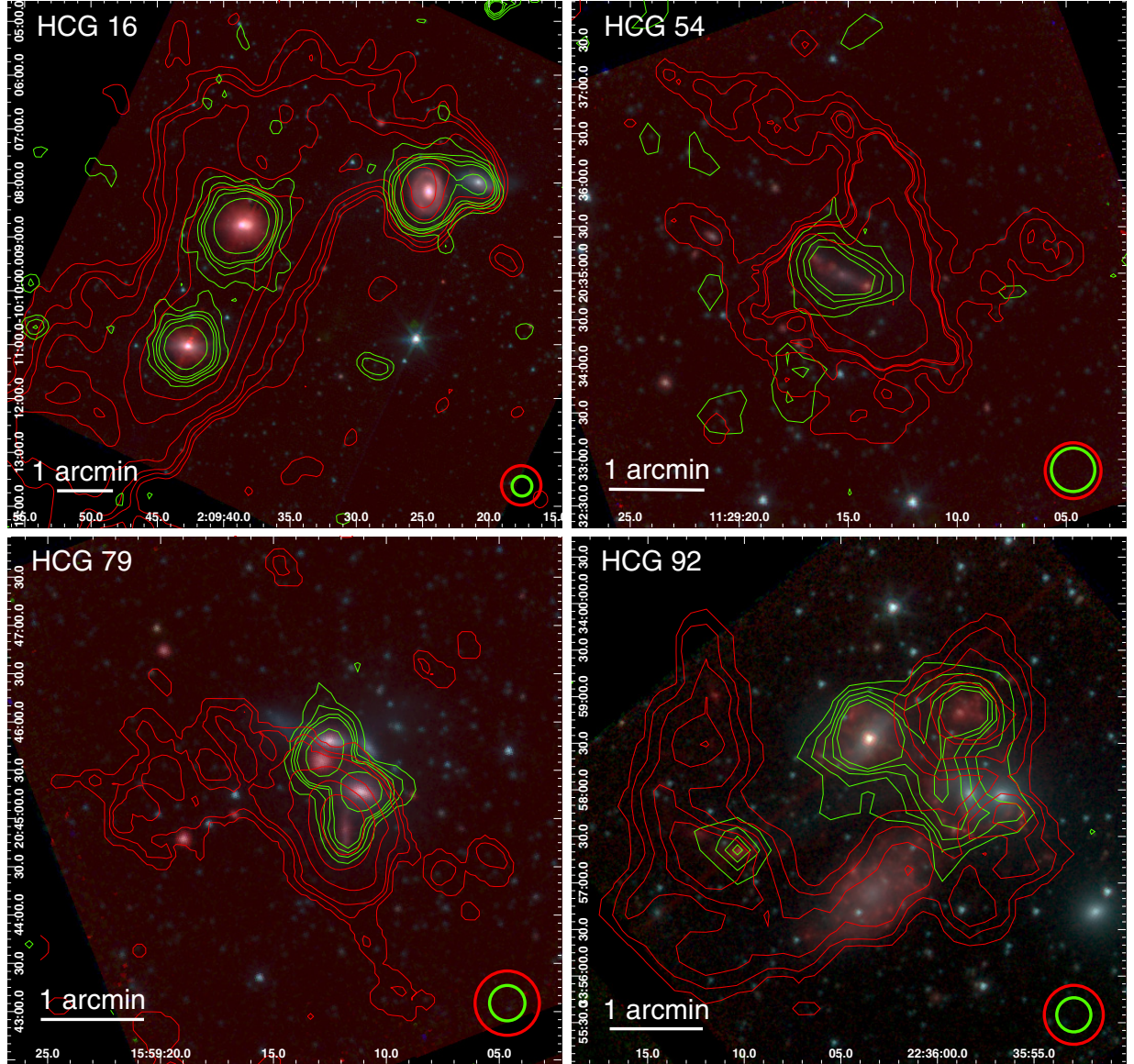


Fig. 12. True colour images, created using the 3.6, 4.5, and $8.0 \mu m$ *Spitzer*/IRAC mosaics of groups HCG16, HCG54, HCG79, and HCG92, respectively. The green and red contour maps are the $250 \mu m$ *Herschel*/SPIRE and the VLA/21 cm moment-0 maps of the same groups. The five contours correspond to 3, 5, 7, 9, and 20σ . In the bottom right corner of each panel, we present the size of the SPIRE $250 \mu m$ and VLA band beams, respectively. The RA and Dec scales of the axes are in J2000.0 coordinates.

formula,

$$M_{HI}[M_{\odot}] = 2.35 \times 10^5 D^2 [\text{Mpc}] \int S(\nu) d\nu [\text{Jy km s}^{-1}], \quad (2)$$

we estimate a lower limit in the mass of the diffuse atomic gas of $\sim 10^6 M_{\odot}/\text{beam}$. Assuming a constant atomic gas-to-dust ratio

of 150 (Draine 2007), we estimate the mass of the diffuse dust in that region to be approximately $7 \times 10^4 M_{\odot}$. In addition, using the SPIRE $250 \mu m$ images, we estimated a typical 3σ limit at $\sim 0.067 \text{ Jy}/\text{beam}$, which corresponds to a lower limit in the mass of the diffuse dust of $12.5 \times 10^4 M_{\odot}/\text{beam}$ (assuming

$\beta = 1.5$ and $T = 15$ K). Therefore, we can rule out the possibility that the diffuse dust emission is below the detection limit of our observations. We conclusively detect cold intragroup dust in at least four HCGs, for which we have atomic gas imaging, but the spatial distribution of the cold dust does not correlate with that of the atomic gas.

4. Conclusions

In this paper we have presented our results of the first far-IR and sub-mm analysis of Hickson compact group galaxies, based on *Herschel* observations. We fitted the UV-to-far-IR SEDs and accurately estimated for first time the mass and temperature of the dust for a sample of 120 galaxies, contained in 28 HCGs, as well as a control sample of field galaxies, the KINGFISH sample. Based on the analysis of these results we conclude the following:

- Late-type galaxies that were found to display red $[NUV - r]$ colours, owing to the enhanced stellar populations they contain, also have significantly lower dust-to-stellar mass ratios than normal HCG or field “blue cloud” late-type galaxies of the same stellar mass. Examining them in more detail, we find that their atomic gas-to-dust mass ratios are more than an order of magnitude lower than the blue cloud late-type galaxies, even though they have similar molecular gas-to-dust mass ratios. We suggest that significant amounts of dust were removed from the disks of these galaxies as a result of tidal and hydrodynamic interactions.
- Unlike the dynamically “young” groups, where no early-type galaxy member was detected, almost 40% of the early-type members of the dynamically “old” groups were detected in all the far-IR and sub-mm bands of *Herschel*. The “dusty” lenticular galaxies display very similar dust masses to the red late-type galaxies. Based on the stellar masses, the star formation rates, the $[NUV - r]$ and mid-IR colours, and the dust-to-stellar and gas mass ratios of the red late-types and the dusty lenticulars, we suggest that they represent transition populations between blue star-forming disk galaxies and quiescent early-type ellipticals in groups. Moreover, MOHEGs seem to dominate this phase of transition.
- We detect seven “dusty” elliptical galaxies, which display high dust-to-stellar mass ratios, comparable to or higher than those of the red late-type galaxies. Unlike to the rest of the sample, there is no correlation between their dust and stellar masses. Moreover, these galaxies display significantly higher sSFRs than the remaining ellipticals in HCGs. We suggest that in these enhanced systems, their dust content is due to accretion from other group members and the intragroup medium, as well as to active star formation.
- Examining the spatial distribution of the emission in the red late-type galaxies, we find that $\sim 20\%$ of their $250 \mu\text{m}$ emission is located outside their main bodies. Similarly, nearly half of the dusty lenticulars also display such extended emission, with the remaining having dust disks that are much smaller than their stellar ones. Estimating the mass of the extended dust we find that it is not enough to compensate for the very low dust-to-stellar mass ratios of these galaxies.
- Searching for the missing dust, we conclusively detect cold intragroup dust in at least four HCGs. Depending on the assumptions we make for its temperature and emissivity, we estimate its mass to be approximately 7–76% of the total dust mass of the group. Comparing the atomic gas and the dust maps and examining the detection limits, we also

conclude that there is no correlation in the distributions of the intragroup gas and the cold dust.

Acknowledgements. T.B. and V.C. would like to acknowledge partial support from the EU FP7 Grant PIRSES-GA-2012-316788. This work is based, in part, on observations made with *Herschel*, a European Space Agency Cornerstone Mission with significant participation by NASA. Support for this work was also provided by NASA through an award issued by JPL/Caltech. We also appreciate the very useful comments of the referee, A. Boselli, which helped improve this paper. Finally, we are grateful to L. Verdes-Montenegro for providing the HI moment-0 maps of 4 HCGs.

References

- Allam, S., Assendorp, R., Longo, G., Braun, M., & Richter, G. 1996, *A&AS*, 117, 39
- Appleton, P. N., Charmandaris, V., & Struck, C. 1996, *ApJ*, 468, 532
- Appleton, P. N., Xu, K. C., Reach, W., et al. 2006, *ApJ*, 639, L51
- Appleton, P. N., Guillard, P., Boulanger, F., et al. 2013, *ApJ*, 777, 66
- Balog, Z., Müller, T., Nielbock, M., et al. 2014, *Exp. Astron.*, in press [[arXiv:1309.6099](https://arxiv.org/abs/1309.6099)]
- Bekki, K., & Couch, W. J. 2011, *MNRAS*, 415, 1783
- Bitsakis, T., Charmandaris, V., Le Floch, E., et al. 2010, *A&A*, 517, A75 (Paper I)
- Bitsakis, T., Charmandaris, V., da Cunha, E., et al. 2011, *A&A*, 533, A142 (Paper II)
- Borthakur, S., Yun, M. S., & Verdes-Montenegro, L. 2010, *ApJ*, 710, 385
- Boselli, A., Boissier, S., Cortese, L., & Gavazzi, G. 2008, *ApJ*, 674, 742
- Boselli, A., Ciesla, L., Cortese, L., et al. 2012, *A&A*, 540, A54
- Bruzual, G., & Charlot, S. 2003, *MNRAS*, 344, 1000
- Chabrier, G. 2003, *PASP*, 115, A763
- Charlot, S., & Fall, S. M. 2000, *ApJ*, 539, A718
- Ciesla, L., Boselli, A., Smith, M.-W. L., et al. 2012, *A&A*, 543, A161
- Condon, J. J., Broderick, J. J., Seielstad, G. A., Douglas, K., & Gregory, P. C. 1994, *AJ*, 107, 1829
- Cortese, L., & Hughes, T. M. 2009, *MNRAS*, 400, 1225
- Cortese, L., Ciesla, L., Boselli, A., et al. 2012, *A&A*, 540, A52
- Cluver, M. E., Appleton, P. N., Boulanger, F., et al. 2010, *ApJ*, 710, 248
- Cluver, M. E., Appleton, P. N., Ogle, P., et al. 2013, *ApJ*, 765, 93
- da Cunha, E., Charlot, S., & Elbaz, D. 2008, *MNRAS*, 388, 1595
- da Cunha, E., Eminian, C., Charlot, S., & Blaizot, J. 2010a, *MNRAS*, 403, 1894
- da Cunha, E., Charmandaris, V., Daz-Santos, T., et al. 2010b, *A&A*, 523, A78
- Dale, D. A., Aniano, G., Engelbracht, C. W., et al. 2012, *ApJ*, 745, 95
- de Vaucouleurs, G., de Vaucouleurs, A., Corwin, H. G., et al. 1991, *Third Reference Catalogue of Bright Galaxies. Vol. I: Explanations and references. Vol. II: Data for galaxies between 0^h and 12^h. Vol. III: Data for galaxies between 12^h and 24^h.* (New York: Springer)
- del Olmo, A., Verdes-Montenegro, L., Perea, J., et al. 2003, *Rev. Mex. Astron. Astrofis.*, 16, 269
- Desjardins, T. D., Gallagher, S. C., Tzanavaris, P., et al. 2013, *ApJ*, 763, 121
- di Serego Alighieri, S., Bianchi, S., Pappalardo, C., et al. 2013, *A&A*, 552, A8
- Draine, B. T. 2003, *ARA&A*, 41, 241
- Draine, B. T., Dale, D. A., Bendo, G., et al. 2003, *ApJ*, 663, 866
- Fazio, G. G., Hora, J. L., Allen, L. E., et al. 2004, *ApJS*, 154, 10
- Gao, Yu, & Xu, Cong 2000, *ApJ*, 542, 23
- Gavazzi, G., Fumagalli, M., Cucciati, O., & Boselli, A. 2010, *A&A*, 517, A73
- Griffin, M. J., Abergel, A., Abreu, A., et al. 2010, *A&A*, 518, A3
- Guillard, P., Boulanger, F., Pineau des Forêts, G., et al. 2012, *ApJ*, 749, 158
- Haynes, M. P., & Giovanelli, R. 1984, *AJ*, 89, 758
- Helou, G., & Beichman, C. A. 1990, *Proc. of the 29th Liège International Astrophysical Coll.*, ESA Publications Division, 117
- Hickson, P. 1982, *ApJ*, 255, 382
- Hickson, P. 1997, *ARA&A*, 35, 357
- Hickson, P., Kindl, E., & Auman, J. R. 1989, *ApJ*, 70, 687
- Hickson, P., Mendes de Oliveira, C., Huchra, J. P., & Palumbo, G. G. 1992, *ApJ*, 399, 353
- Hughes, T. M., & Cortese, L. 2009, *MNRAS*, 396, 41
- Johnson, K. E., Hibbard, J. E., Gallagher, S. C., et al. 2007, *AJ*, 134, 1522
- Kennicutt, R. C., Calzetti, D., Aniano, G., et al. 2011, *PASP*, 123, 1347
- Konstantopoulos, I. S., Appleton, P. N., Guillard, P., et al. 2014, *ApJ*, 784, 1
- Leon, S., Combes, F., & Menon, T. K. 1998, *A&A*, 330, 37
- Martinez, M. A., Del Olmo, A., Coziol, R., & Perea, J. 2010, *AJ*, 139, 1199
- Martinez-Badenes, V., Lisenfeld, U., Espada, D., et al. 2012, *A&A*, 540, A96
- Mendes de Oliveira, C., & Hickson, P. 1994, *ApJ*, 427, 684
- Natale, G., Tuffs, R. J., Xu, C. K., et al. 2010, *ApJ*, 725, 955
- Nguyen, H. T., Schulz, B., Levenson, L., et al. 2010, *A&A*, 518, L5

- O'Sullivan, E., Giacintucci, S., Vrtilik, J. M., Raychaudhury, S., & David, L. P. 2009, *ApJ*, 701, 1560
- Ogle, P., Boulanger, F., Guillard, P., et al. 2010, *ApJ*, 724, 1193
- Peterson, B. W., Appleton, P. N., Helou, G., et al. 2012, *ApJ*, 751, 11
- Pilbratt, G. L., Riedinger, J. R., Passvogel, T., et al. 2010, *A&A*, 518, A1
- Planck Collaboration XXIV. 2011, *A&A*, 536, A24
- Poglitsch, A., Waelkens, C., Geis, N., et al. 2010, *A&A*, 518, L2
- Ponman, T. J., Bourner, P. D. J., Ebeling, H., & Bohringer, H. 1996, *MNRAS*, 283, 690
- Rasmussen, J., Ponman, T. J., Verdes-Montenegro, L., Yun, M. S., & Borthakur, S. 2008, *MNRAS*, 388, 1245
- Rieke, G. H., Young, E. T., Engelbracht, C. W., et al. 2004, *ApJS*, 154, 25
- Roussel, H. 2013, *PASP*, 125, 1126
- Sanders, D. B., Mazzarella, J. M., Kim, D.-C., Surace, J. A., & Soifer, B. T. 2003, *AJ*, 126, 1607
- Shimada, M., Ohyama, Y., Nishiura, S., Murayama, T., & Taniguchi, Y. 2000, *AJ*, 119, 2664
- Skrutskie, M. F., Cutri, R. M., Stiening, R., et al. 2006, *AJ*, 131, 1163
- Slater, S. K., Charmandaris, V., & Haynes, M. P. 2004, *BAAS*, 36, 728
- Sohn, J., Hwang, H.-S., Lee, M. G., Lee, G.-H., & Lee, J.-C. 2013, 2013, *ApJ*, 771, 106
- Stickel, M., van der Hulst, J. M., van Gorkom, J. H., Schiminovich, D., & Carilli, C. L. 2004, *A&A*, 415, 95
- Struck, K. 1999, *Phys. Rep.*, 321
- Taylor, E. L., Mann, R. G., Efstathiou, A. N., et al. 2005, *MNRAS*, 361, 1352
- Thomas, H. C., Alexander, P., Clemens, M. S., et al. 2004, *MNRAS*, 351, 362
- Traficante, A., Calzoletti, L., Veneziani, M., et al. 2011, *MNRAS*, 416, 4
- Trinchieri, G., Sulentic, J., Pietsch, W., & Breitschwerdt, D. 2005, *A&A*, 444, 697
- Verdes-Montenegro, L., Yun, M. S., Williams, B. A., et al. 2001, *A&A*, 377, 812
- Verdes-Montenegro, L., Del Olmo, A., Iglesias-Páramo, J. I., et al. 2002, *A&A*, 396, 815
- Walker, L. M., Johnson, K. E., Gallagher, S. C., et al. 2012, *AJ*, 143, 69
- Walker, L. M., Butterfield, N., Johnson, K., et al. 2013, *ApJ*, 775, 129
- Williams, B. A., Yun, Min S., & Verdes-Montenegro, L. 2002, *AJ*, 123, 2417
- Wyder, T., Martin, D. C., Schiminovich, D., et al. 2007, *ApJ*, 173, 293
- Zepf, S. E., & Whitmore, B. C. 1993, *ApJ*, 418, 72
- Zibetti, S., Gallazzi A., Charlot S., Pasquali A., & Pierini D. 2012, *IAU Symp.*, 284, 63

Appendix A: Far-infrared galaxy morphologies

In this section we present the *Spitzer*/IRAC “true” colour images of the HCGs in our sample, overlaid with the *Herschel*/SPIRE 250 μm cold dust contours in green, as well as with the atomic gas contours (in red; where available). We convolved the *Herschel*/PACS and SPIRE bands to the beam of SPIRE 500 μm and compared them to each other to eliminate background sources and mapping artefacts. Therefore, all dust contours observed in these maps are correlated with the groups.

When examining these maps one can notice extended dust features (i.e. in HCG4, HCG22, and HCG47) and tidal dust bridges (such as the one connecting HCG95C and HCG95A, observed in all bands from the UV to the sub-mm). On the other hand, cases such as HCG22a and HCG68b where their stellar disk extends more than their dust could imply the truncation of the outer dust layers due to tidal stripping. Finally, there are extreme cases, such as HCG92 where all the gas and almost all the dust are located in a large dusty filament outside the main bodies of the galaxies.

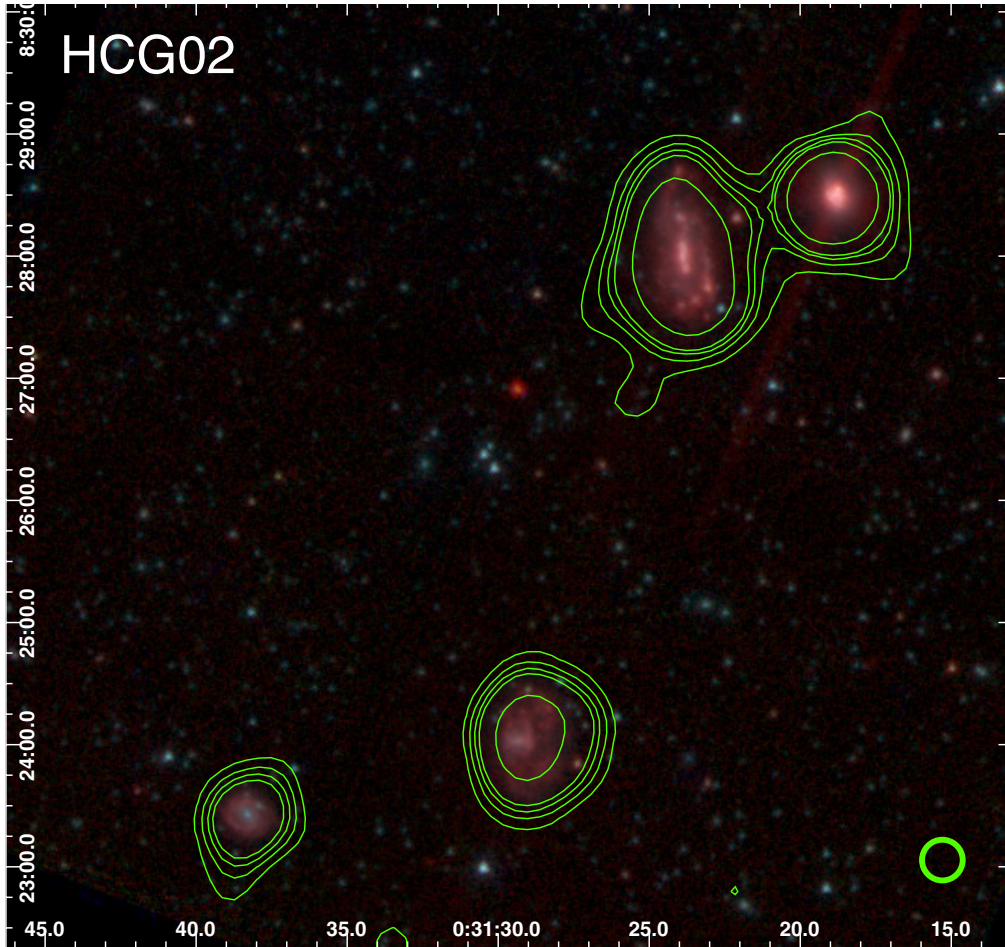


Fig. A.1. True colour images, created using the 3.6, 4.5 and 8.0 μm *Spitzer*/IRAC mosaics of all the groups in our sample. The green and red (when available) contour maps are the 250 μm *Herschel*/SPIRE and the VLA/HI moment-0 maps of the same groups. The six contours correspond to 3, 5, 7, 9, and 20 σ . In the bottom right corner of each panel we present the size of the SPIRE 250 μm and VLA band beams, respectively. The RA and Dec scales of the axes are in J2000.0 coordinates.

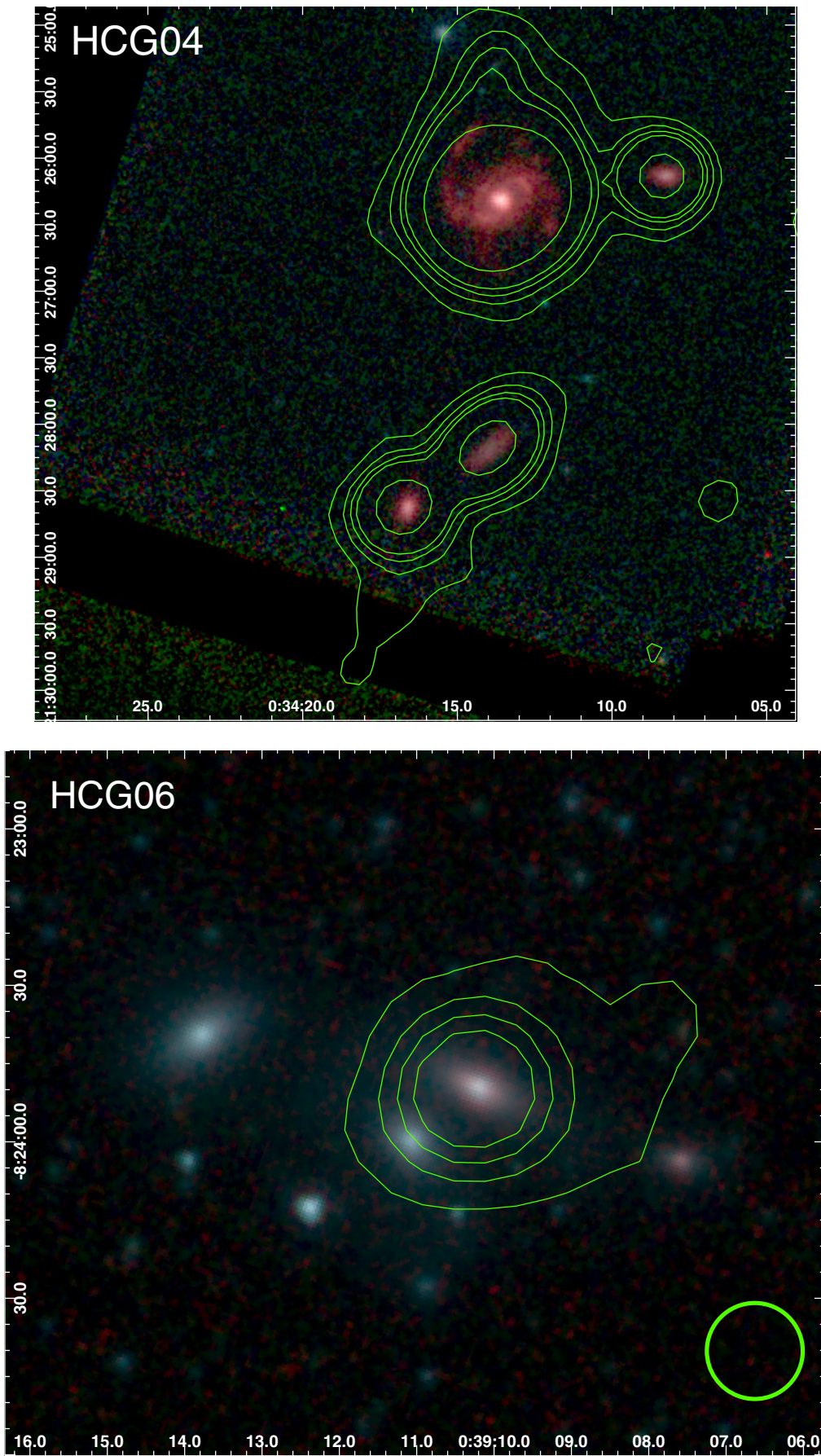


Fig. A.1. continued.

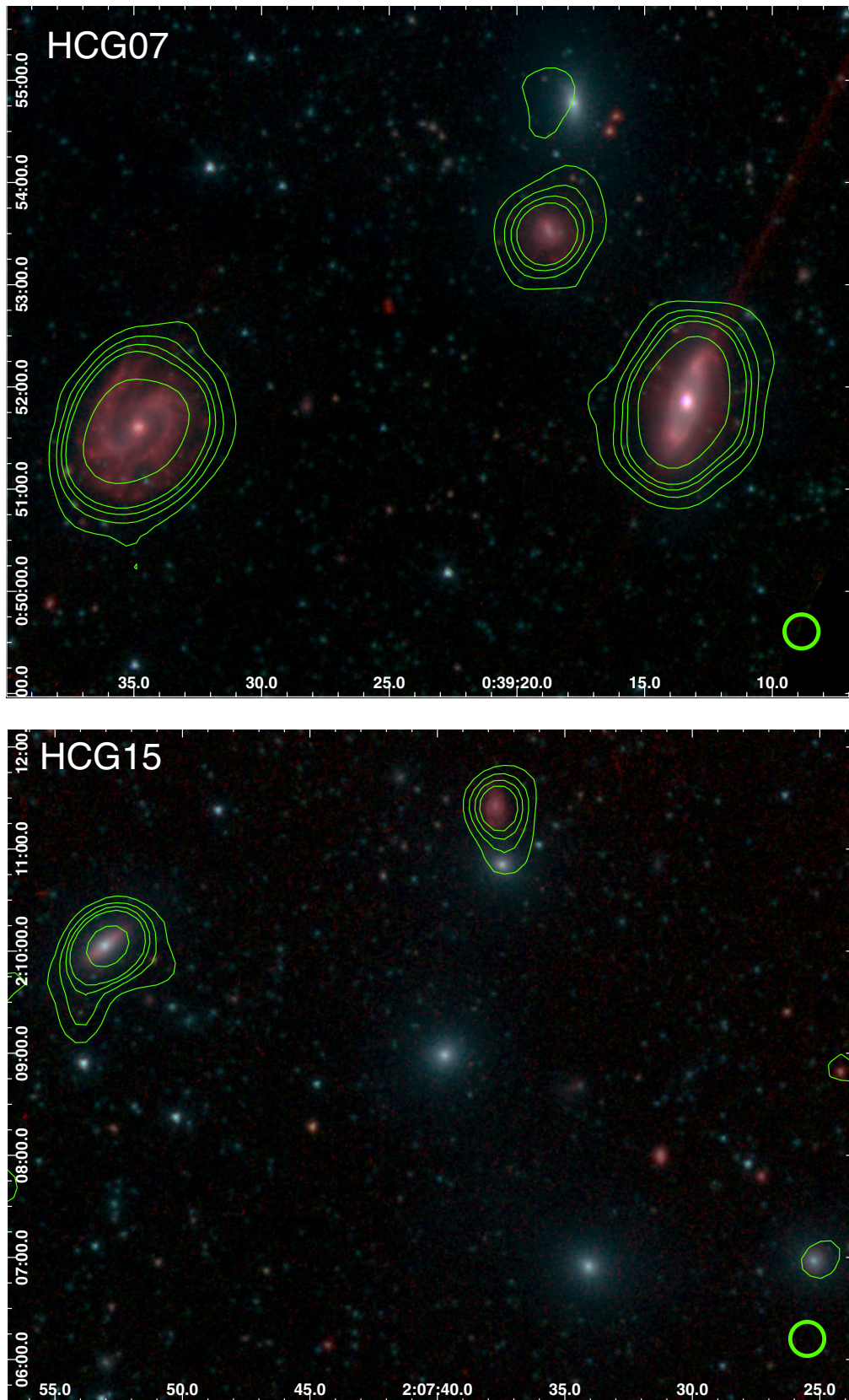


Fig. A.1. continued.

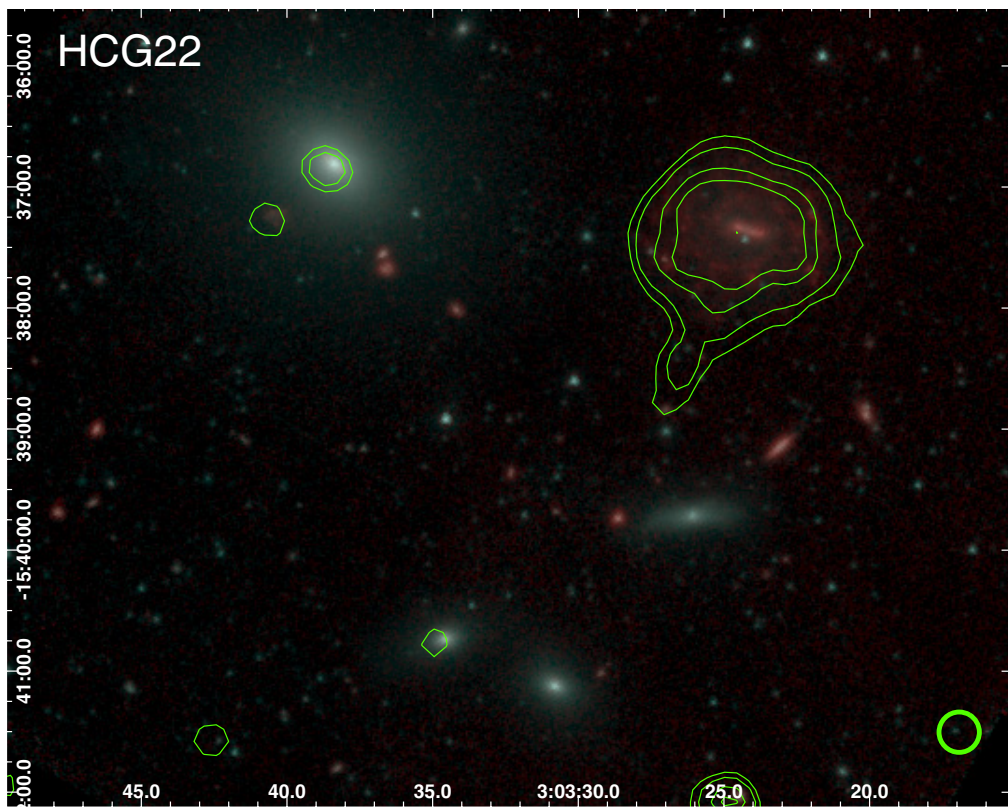
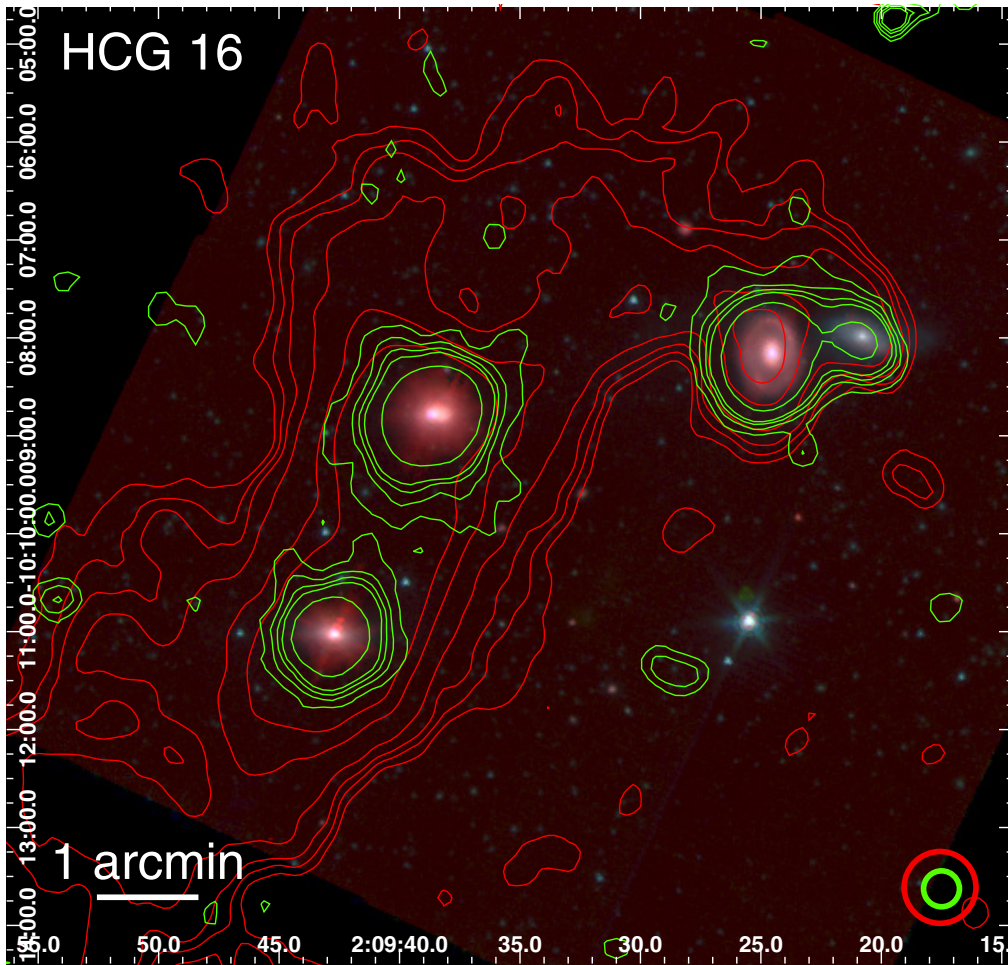


Fig. A.1. continued.

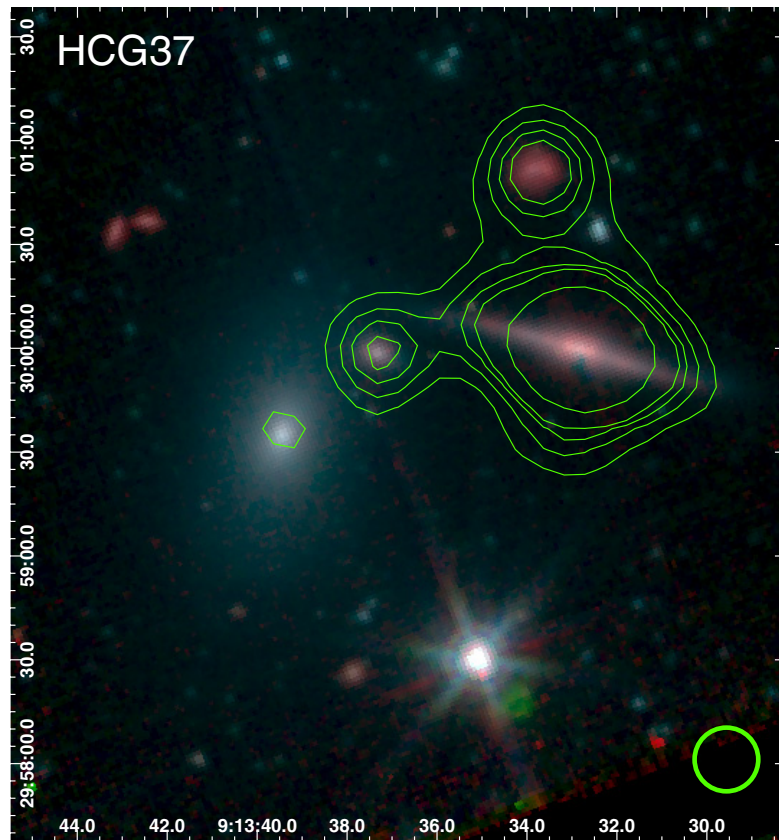
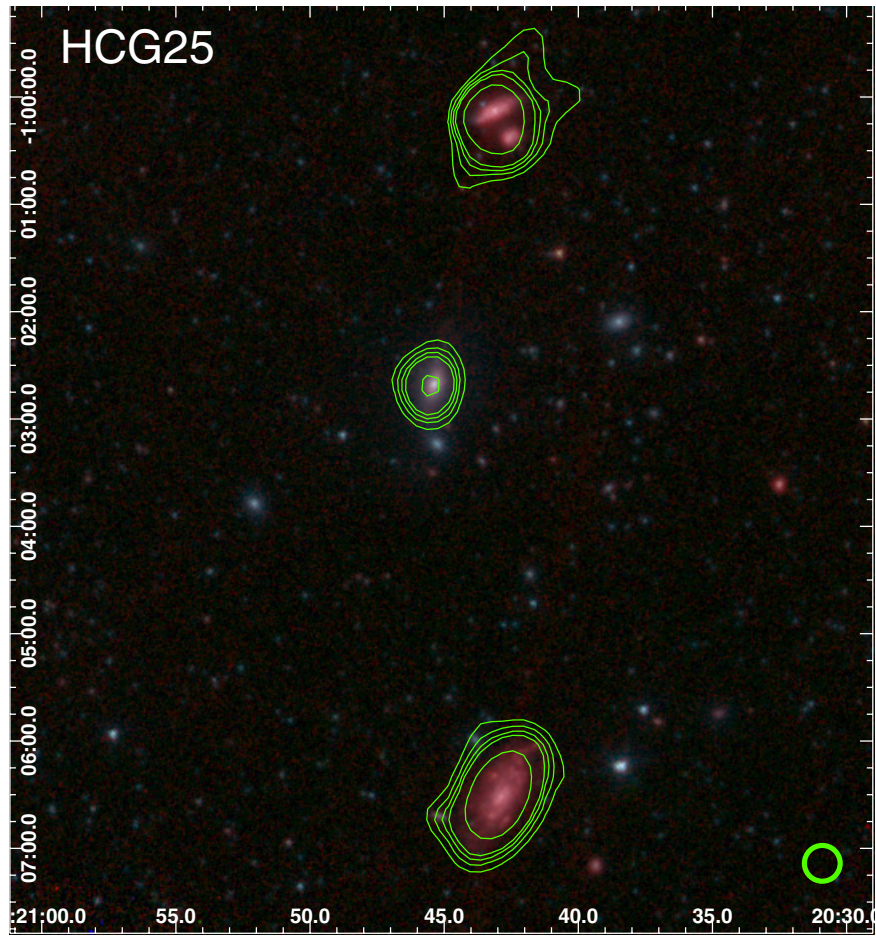


Fig. A.1. continued.

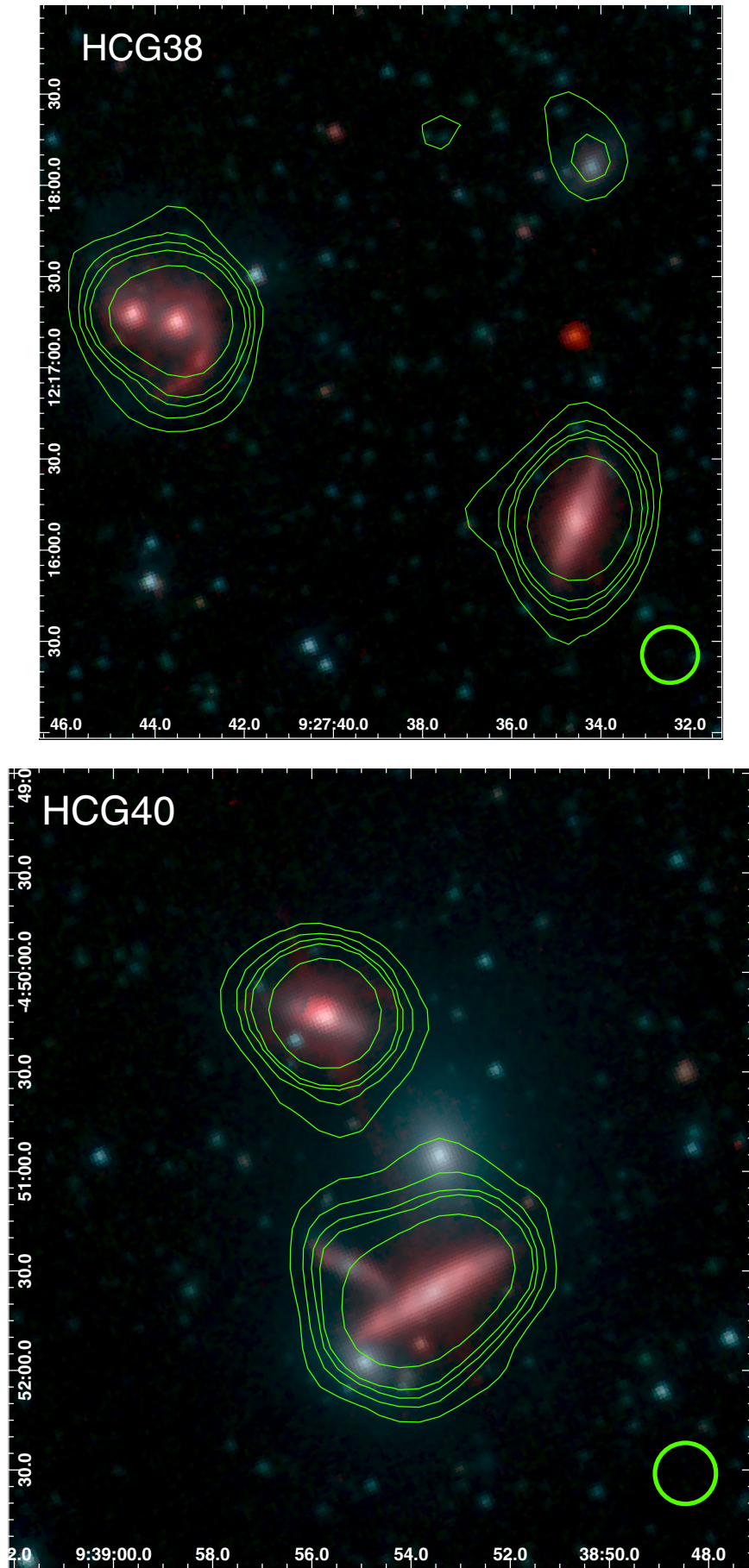


Fig. A.1. continued.

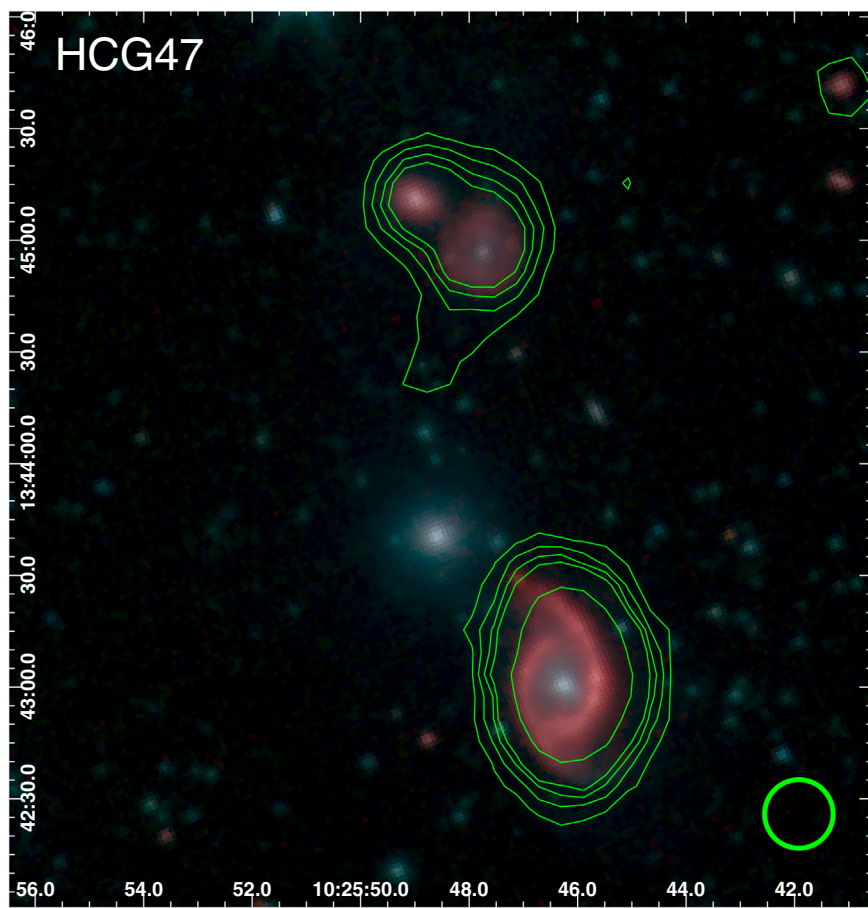
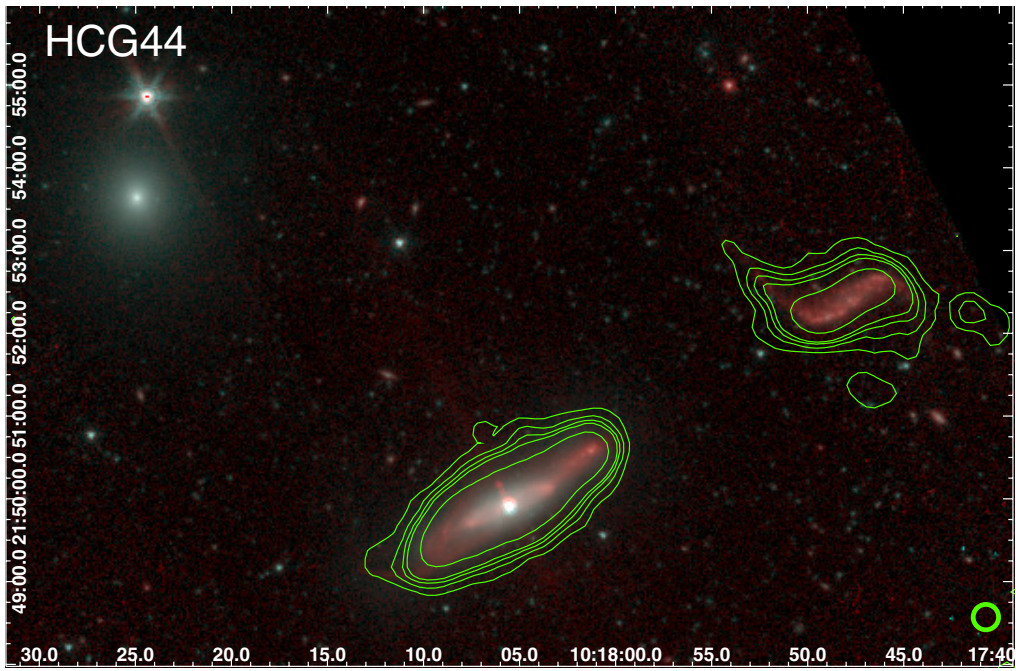


Fig. A.1. continued.

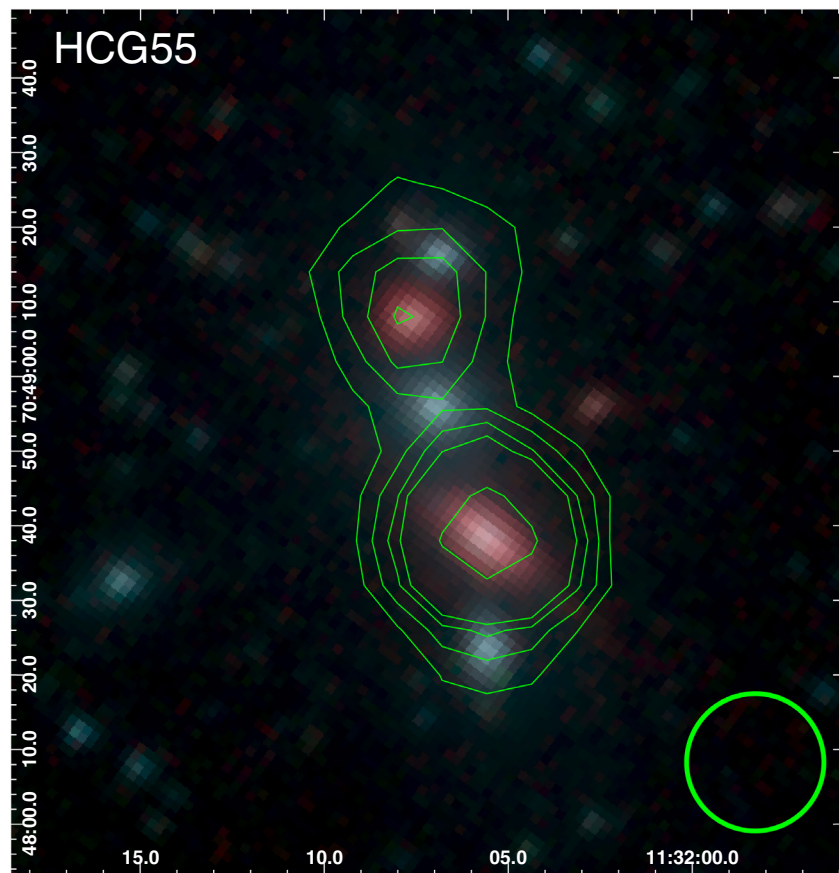
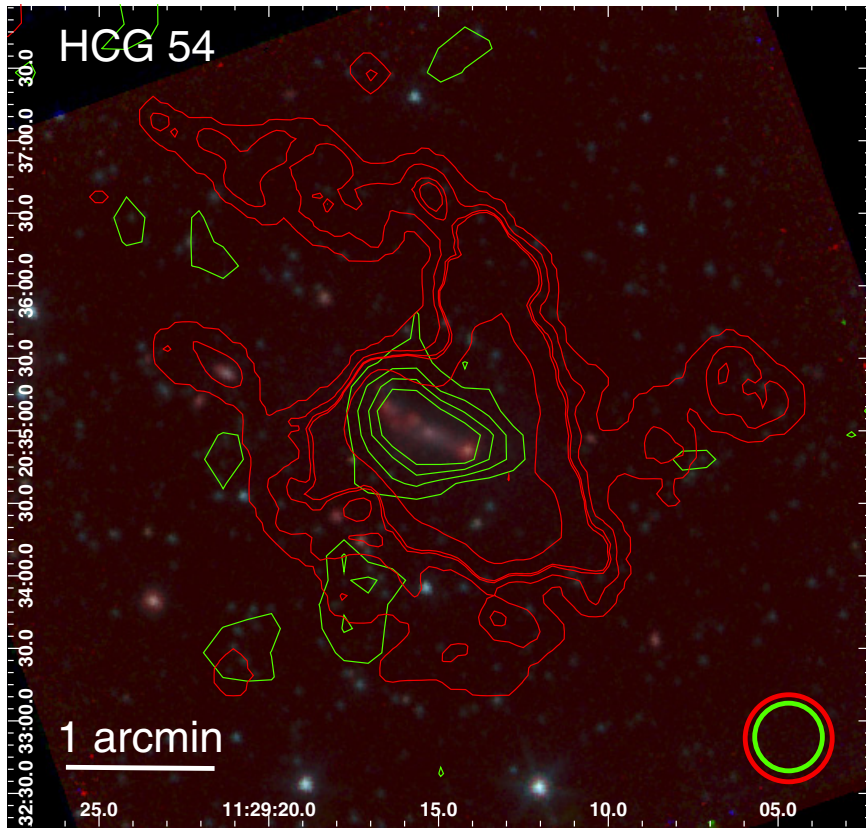


Fig. A.1. continued.

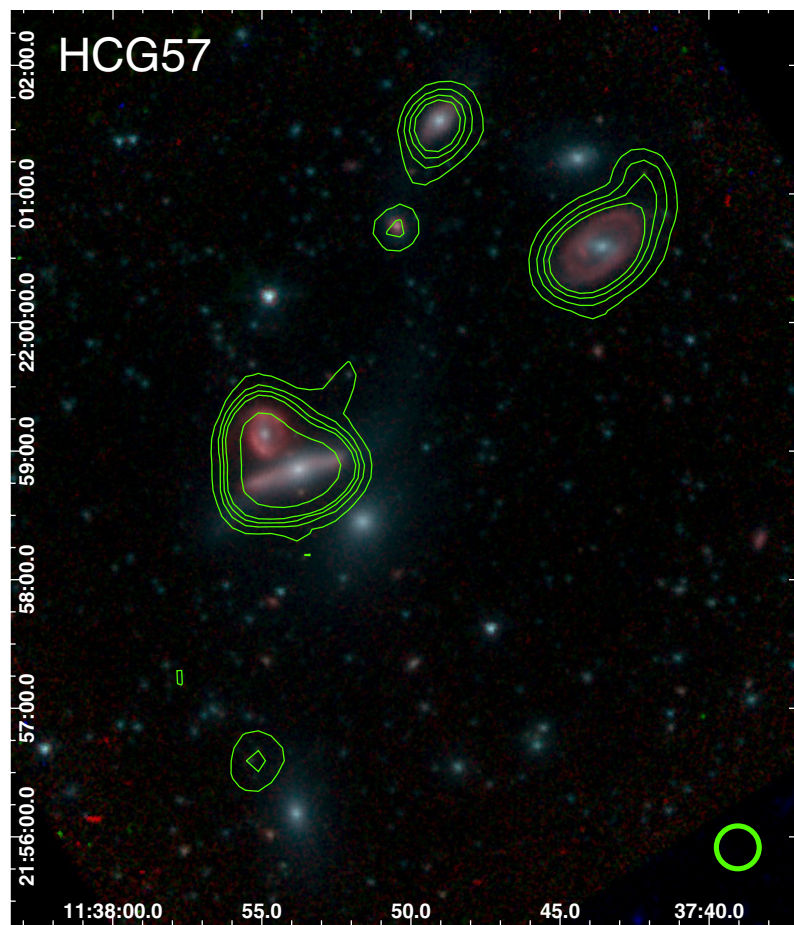
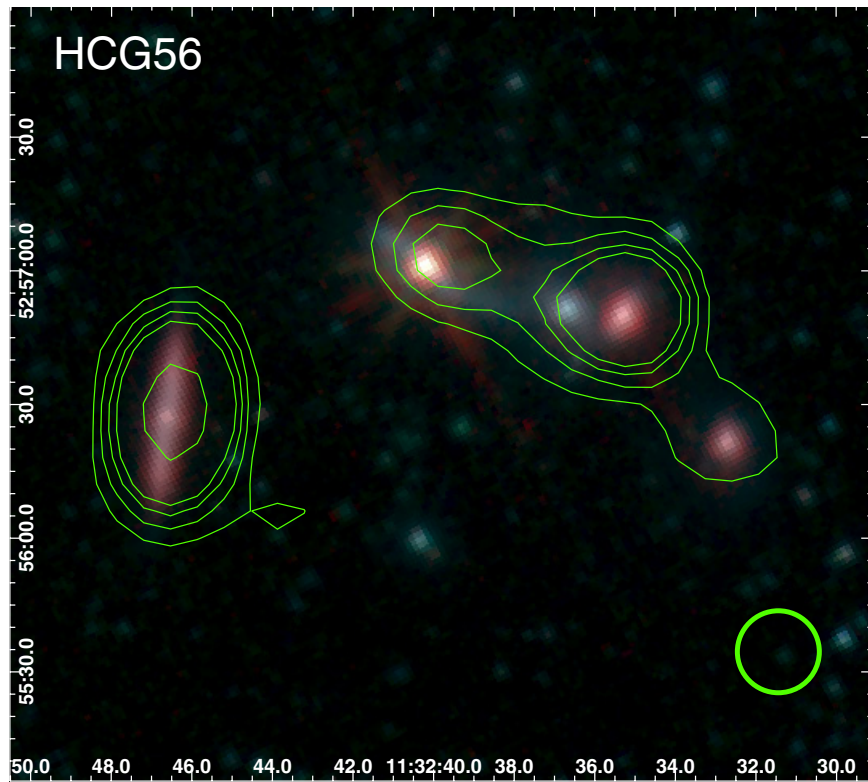


Fig. A.1. continued.

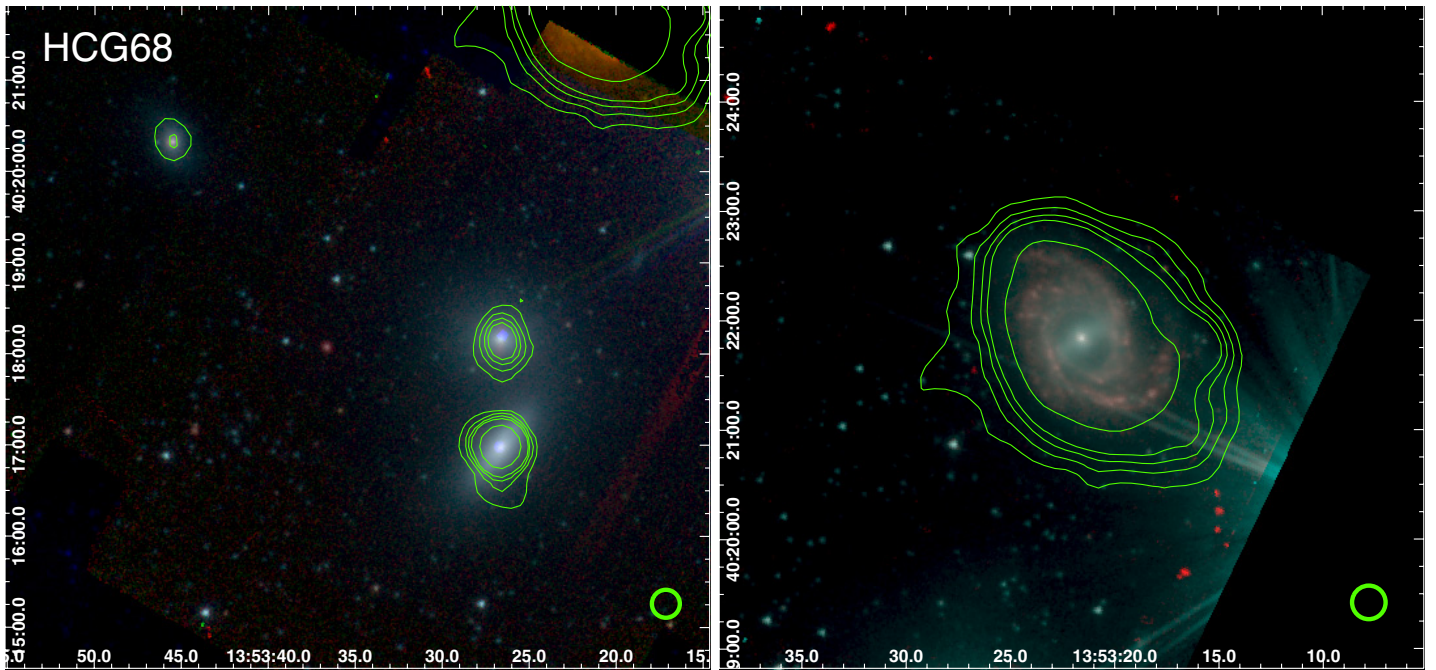
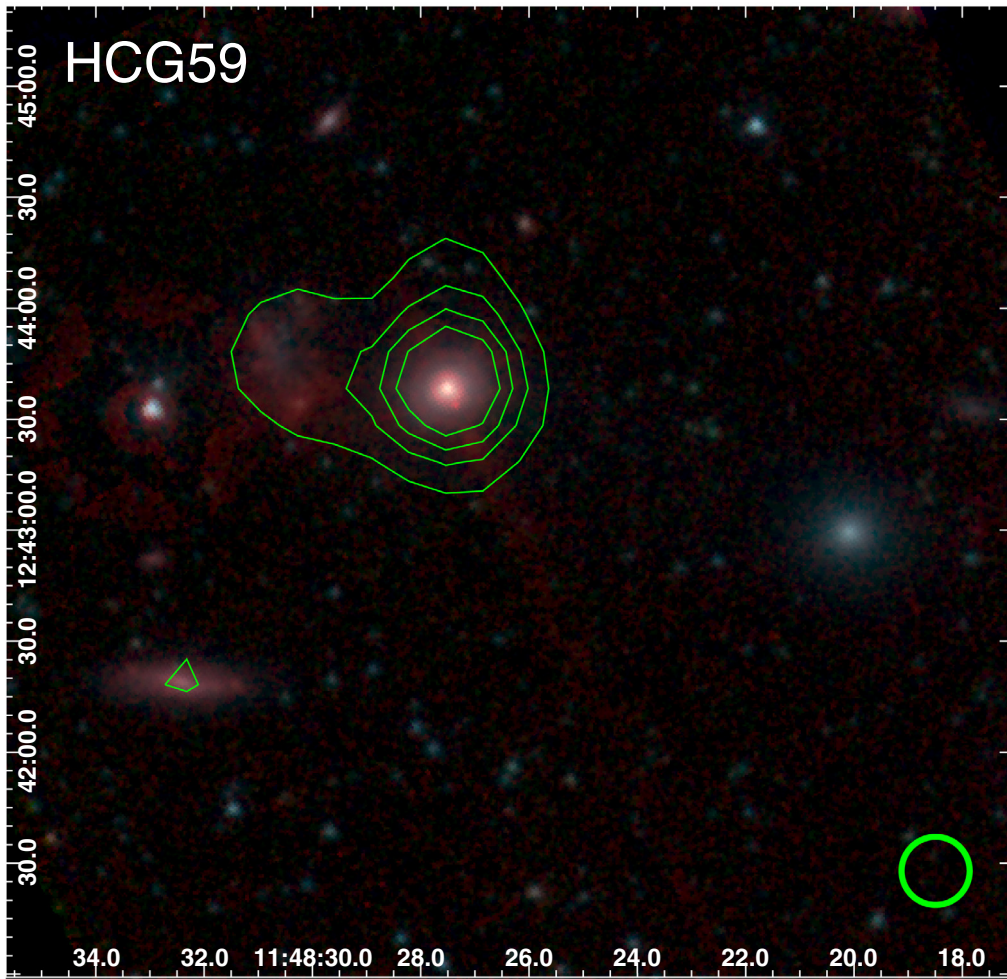


Fig. A.1. continued.

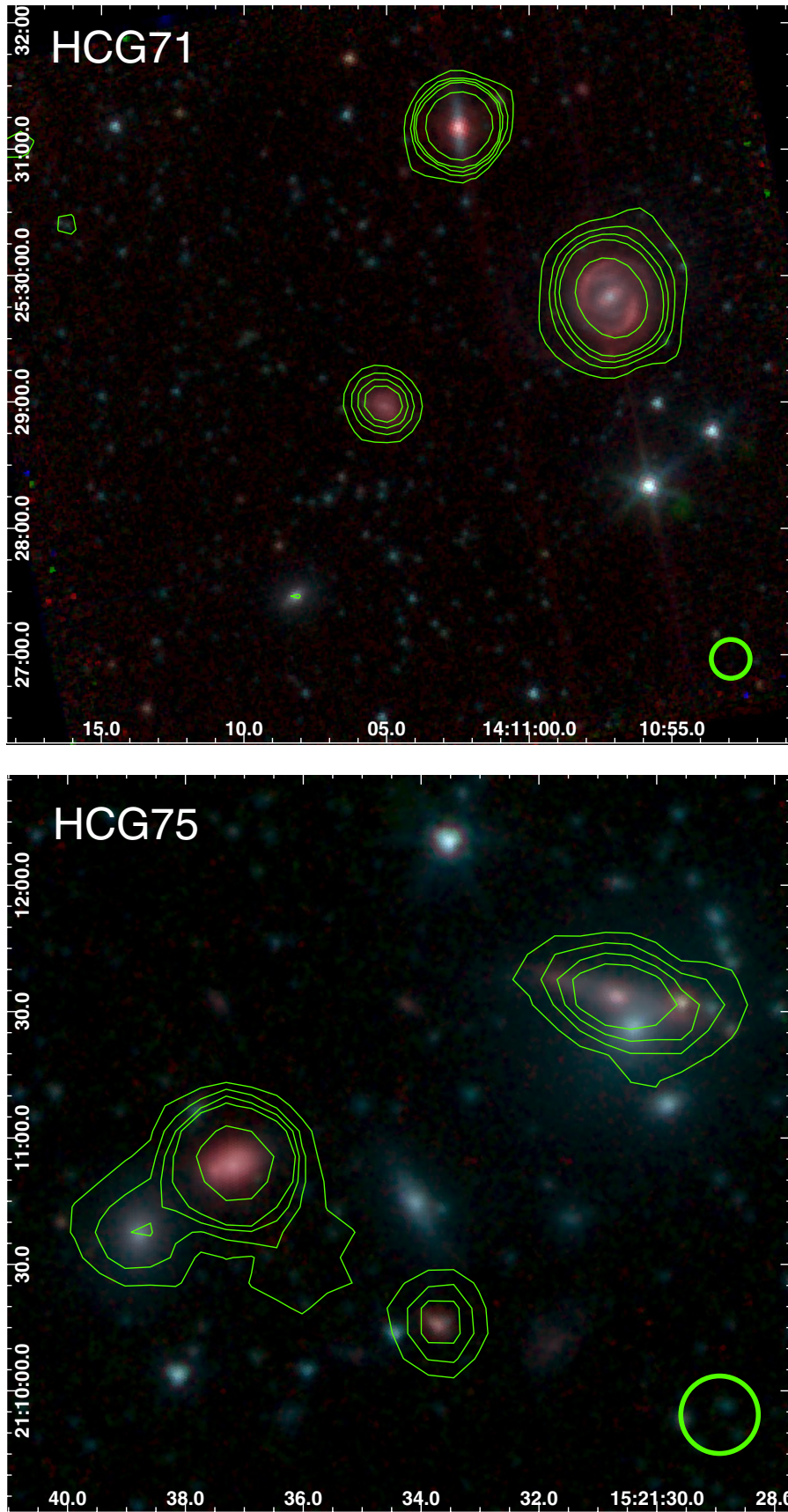


Fig. A.1. continued.

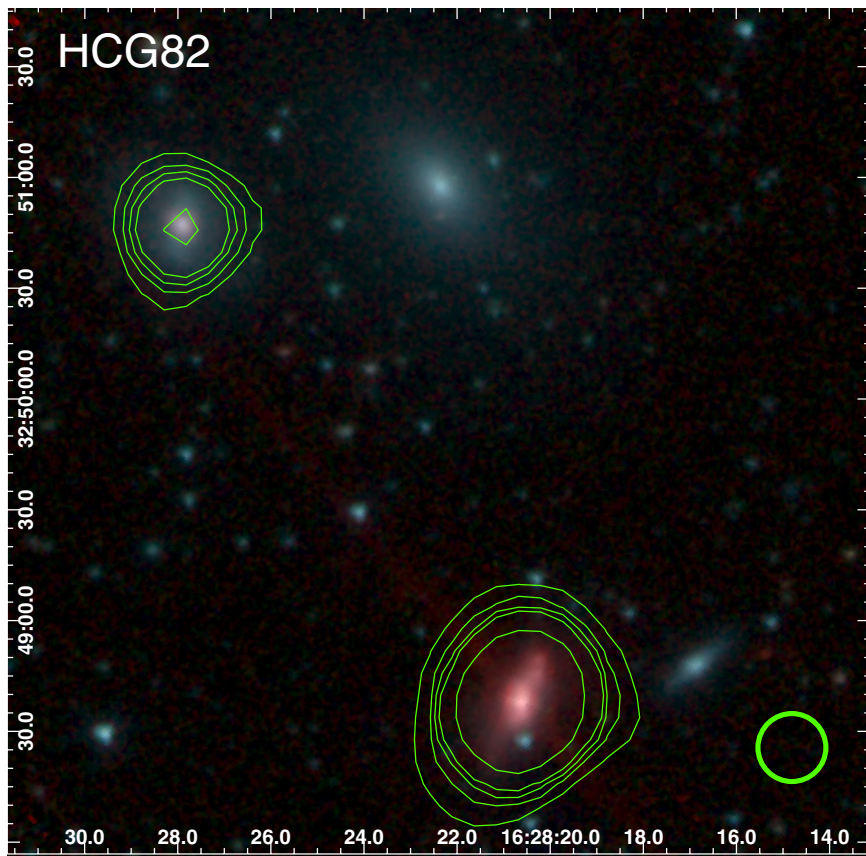
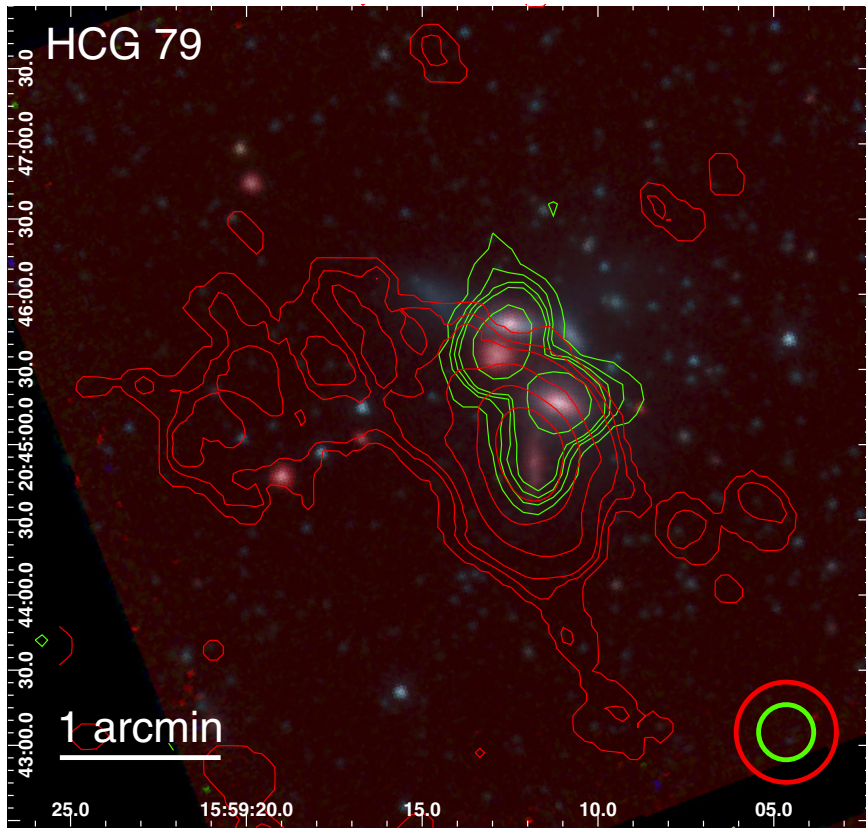


Fig. A.1. continued.

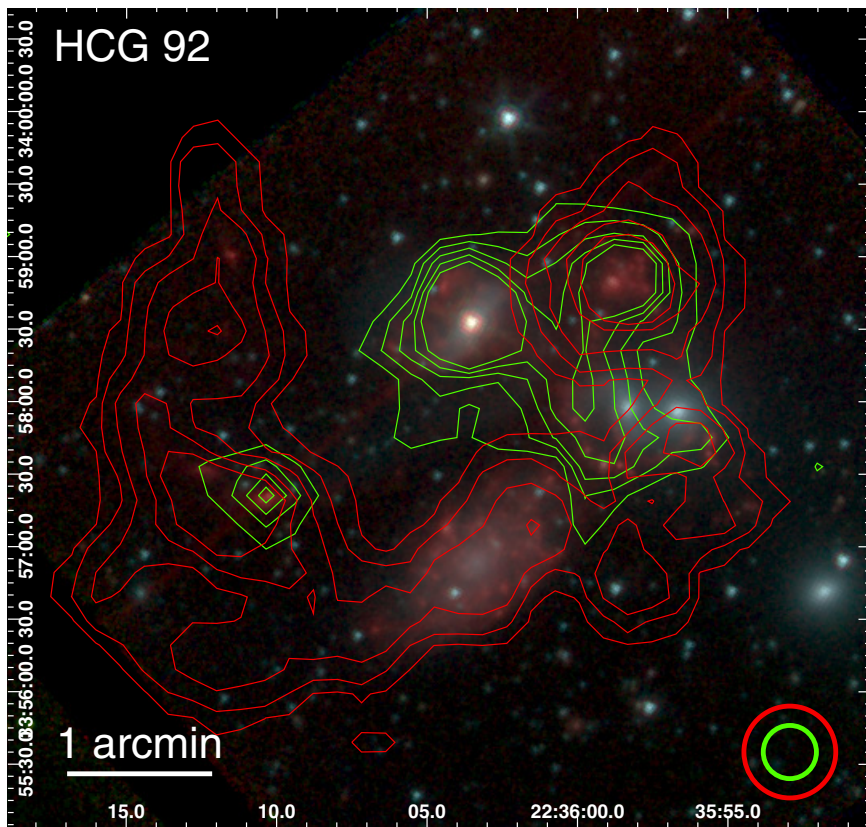
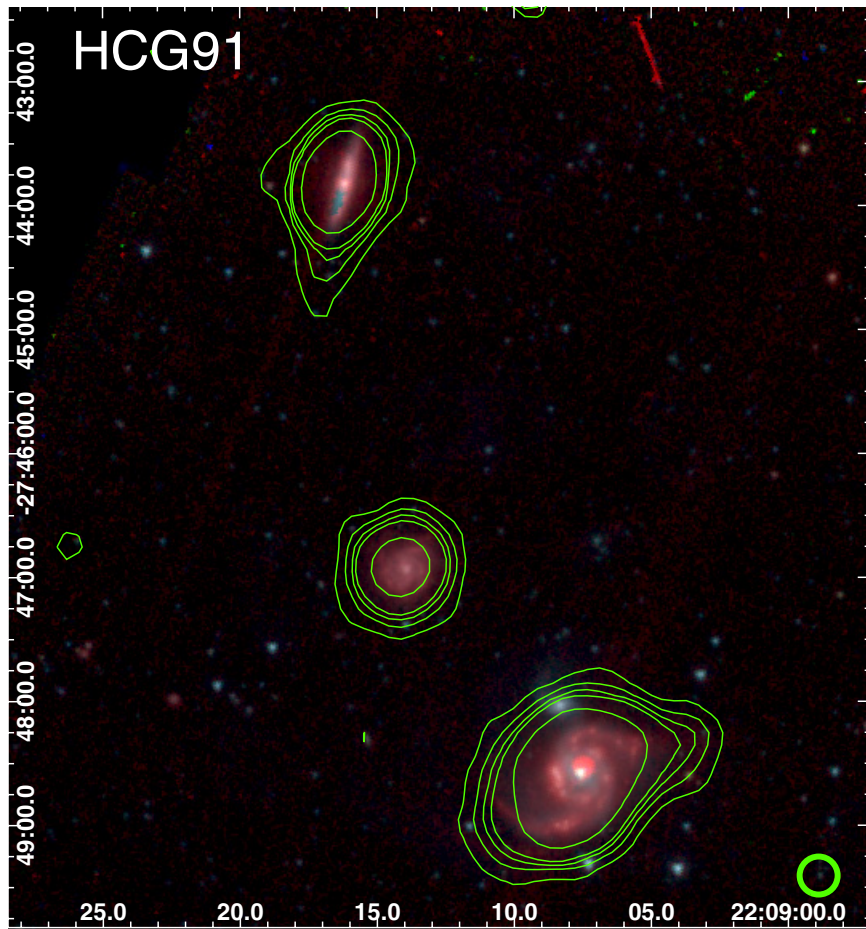


Fig. A.1. continued.

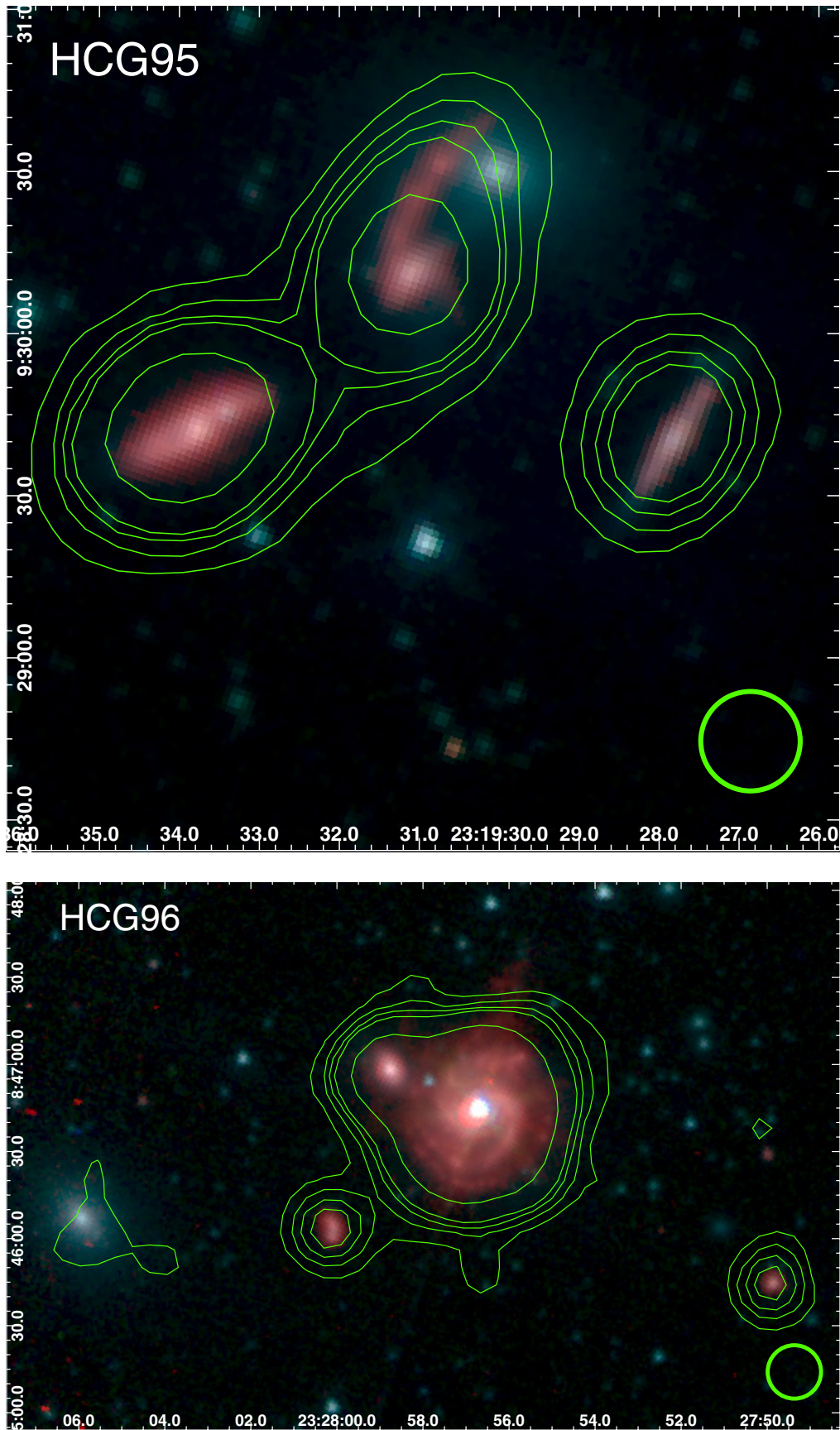


Fig. A.1. continued.

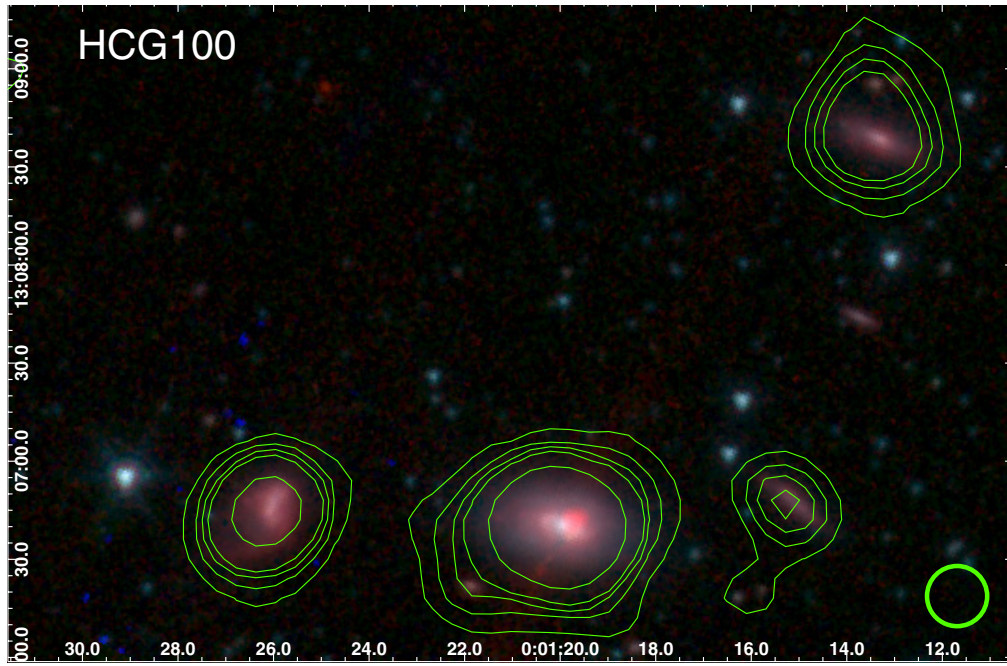


Fig. A.1. continued.