



HAL
open science

PPPC 4 DM secondary: a Poor Particle Physicist Cookbook for secondary radiation from Dark Matter

Jatan Buch, Marco Cirelli, Gaëlle Giesen, Marco Taoso

► To cite this version:

Jatan Buch, Marco Cirelli, Gaëlle Giesen, Marco Taoso. PPC 4 DM secondary: a Poor Particle Physicist Cookbook for secondary radiation from Dark Matter. *Journal of Cosmology and Astroparticle Physics*, 2015, 2015 (09), pp.037. 10.1088/1475-7516/2015/9/037 . cea-01221157

HAL Id: cea-01221157

<https://cea.hal.science/cea-01221157>

Submitted on 27 Jan 2023

HAL is a multi-disciplinary open access archive for the deposit and dissemination of scientific research documents, whether they are published or not. The documents may come from teaching and research institutions in France or abroad, or from public or private research centers.

L'archive ouverte pluridisciplinaire **HAL**, est destinée au dépôt et à la diffusion de documents scientifiques de niveau recherche, publiés ou non, émanant des établissements d'enseignement et de recherche français ou étrangers, des laboratoires publics ou privés.

PPPC 4 DM secondary: a Poor Particle Physicist Cookbook for secondary radiation from Dark Matter

Jatan Buch,^{a,b} Marco Cirelli,^a Gaëlle Giesen^a and Marco Taoso^a

^aInstitut de Physique Théorique, Université Paris Saclay, CNRS, CEA,
F-91191 Gif-sur-Yvette, France

^bDepartment of Physics, Indian Institute of Technology,
Kharagpur, West Bengal - 721302, India

E-mail: jbuch.iitkgp@gmail.com, marco.cirelli@cea.fr, gaelle.giesen@cea.fr,
marco.taoso@cea.fr

Received May 8, 2015

Revised August 7, 2015

Accepted August 19, 2015

Published September 11, 2015

Abstract. We enlarge the set of recipes and ingredients at disposal of any poor particle physicist eager to cook up signatures from weak-scale Dark Matter models by computing two secondary emissions due to DM particles annihilating or decaying in the galactic halo, namely the radio signals from synchrotron emission and the gamma rays from bremsstrahlung. We consider several magnetic field configurations and propagation scenarios for electrons and positrons. We also provide an improved energy loss function for electrons and positrons in the Galaxy, including synchrotron losses in the different configurations, bremsstrahlung losses, ionization losses and Inverse Compton losses with an updated InterStellar Radiation Field.

Keywords: dark matter theory, gamma ray theory, cosmic ray theory, dark matter experiments

ArXiv ePrint: [1505.01049](https://arxiv.org/abs/1505.01049)



Contents

1	Introduction	1
2	Astrophysical configurations	2
2.1	Galactic magnetic field	2
2.2	Other astrophysical ingredients	3
3	Results	6
3.1	An improved energy loss function for e^\pm in the Galaxy	6
3.2	Revised halo functions for e^\pm in the Galaxy	9
3.3	Synchrotron halo functions	11
3.4	Bremsstrahlung halo functions	17
4	Conclusions	18

1 Introduction

Dark Matter (DM) constitutes the largest matter component of the Universe, but its nature has so far remained elusive. It is searched for in a number of ways, and most notably via its possible electromagnetic emission in the Galaxy.

In particular, an interesting strategy consists in looking for the emissions produced by the interactions of relativistic electrons and positrons, injected by DM annihilations (or decays), with the galactic environment. These emissions go under the collective name of ‘secondary radiation’ and are essentially of three kinds: (i) radio waves due to the synchrotron radiation of the e^\pm on the galactic magnetic field; (ii) gamma rays due to the bremsstrahlung processes on the galactic gas density; (iii) gamma rays due to the Inverse Compton scattering (ICS) processes on the interstellar radiation field.

They have received different attention in the literature. Synchrotron emission has been considered since a long time in regions close to the Galactic Center (GC), characterized by a large intensity of the magnetic field [1–8]. Its relevance in wider regions of interest in the Galaxy has also been highlighted [9–19]. Bremsstrahlung gamma rays have mostly been neglected for what concerns DM studies. Recently, however, their importance has been recognized, especially in connection with searches for relatively light (10-40 GeV) DM signals from the GC [20–25]. Finally, ICS gamma rays have been identified as an important component of the DM gamma ray spectrum mainly in conjunction with the models of leptophilic DM featuring a large annihilation cross section, proposed in the wake of the lepton excesses measured by PAMELA, FERMI, HESS and most recently AMS-02 (see e.g. [26–31] and many subsequent works).

All these signatures are potentially very relevant and promising. Their practical use, however, depends on a number of different choices, e.g. related to the unknown magnetic field configuration, to the unknown propagation parameters of electrons and positrons in the Galaxy, to the unknown gas distribution, to the unknown profile of Dark Matter etc. Some of these uncertainties are also shared with other possible signals from DM in other Indirect Detection channels. In pursuing the goal of identifying Dark Matter or better constraining it, it is therefore important to be able to perform multi-messenger analyses in a coherent

framework and therefore to develop a set of coherent, model independent tools. A step in this direction is what we would like to make here.

More precisely, the purpose of this paper is to provide state-of-the-art tools allowing the computation of synchrotron and bremsstrahlung radiation¹ for any (weak-scale) DM model, for a set of possible astrophysical configurations that bracket the current sensible ranges of the uncertainties. This follows the spirit of previous papers ([32, 33]): the concrete goal is to enable the ‘DM model builder’ to readily compute the synchrotron and bremsstrahlung phenomenology of her model without having to fiddle with the underlying computations or even with the intervening astrophysics, but just by choosing which configurations to adopt (and being able to adopt the same choices consistently for other indirect detection channels). On the way to achieve that, we have to upgrade some ingredients used to accurately compute the population of DM-induced electrons and positrons, namely the energy loss function and the e^\pm halo functions (see below). In the spirit of [32, 33] we always employ semi-analytical methods rather than fully numerical ones, in order to better control the relevant physics.

Armed with the tools just described, we will later play the same game ourselves [34] by applying them to refine the constraints from synchrotron radiation derived in [10].

The rest of this paper is organized as follows. In section 2 we spell out the astrophysical ingredients we need. We discuss in some detail the configurations of the magnetic field (relevant for synchrotron emission) while we just recall the main points concerning the other ingredients (DM distribution, CR propagation parameters, ISRF, galactic gas maps). In section 3 we list several new results. First, in section 3.1 and 3.2 we present our improved energy loss function and our improved e^\pm generalized halo functions. Then, in section 3.3 and 3.4 we present the two main results and numerical outputs of this work: the generalized halo functions for synchrotron radiation and for bremsstrahlung emission. In section 4 we conclude.

2 Astrophysical configurations

In this section we spell out the astrophysical ingredients that we use to compute the propagation of electrons and positrons and ultimately the synchrotron and bremsstrahlung signals.

While there certainly exist some interdependences between the parameters entering in these astrophysical ingredients (for instance, the thickness of the CR diffusive halo — called L in the notation below — is related to the vertical extent of the galactic magnetic field, since a far reaching magnetic field determines a thick CR confinement box) it is beyond our scope to impose such correlations by hand. Our aim is to provide the full range of possible choices and it is up to the user to choose sensible combinations. In order to consider interdependencies self-consistently one is better off choosing a fully numerical approach to the propagation of cosmic rays, such as by using Galprop [35] or Dragon [36–38].

2.1 Galactic magnetic field

Our Galaxy has a complicated magnetic field structure, and dedicated efforts by several groups have been performed in order to map it: for some recent overviews and sets of references see for instance [40–43]. We recall here the salient features of the inferred magnetic field and then define the simplified functional form that we will adopt.

¹We remind that the equivalent tool for ICS radiation is already provided in [32], and will be updated soon in order to include the improvements of the present paper.

The total galactic magnetic field \vec{B}_{tot} is the sum of a large scale regular \vec{B}_{reg} and a turbulent \vec{B}_{turb} component. These, in turn, can be decomposed in different contributions, including disk and halo fields. The regular magnetic field is caused by dynamo effects in the galaxy and it can be studied with Faraday rotation measurements of nearby pulsars and high latitude radio sources, or with measurements of the polarized synchrotron intensity. On the other hand, the turbulent magnetic fields are tangled by turbulent gas flows and can be traced looking for their unpolarized synchrotron emission. Recent models of the galactic magnetic fields have been proposed e.g. in [42, 44–47].

Rather than the detailed magnetic field geography, the overall intensity is more important for our purposes. While we keep in mind that the complicated cartography sketched above can have an impact on the determination of the energy losses of electrons and on the synchrotron emission from DM, we choose to model the disk field strength by a double exponential in z and in r , as proposed e.g. by [49] and [50] for the radial part. Namely, we use

$$B_r = B_0 \exp \left[-\frac{r - r_{\odot}}{R} - \frac{|z|}{z_D} \right] \quad (2.1)$$

where $r_{\odot} = 8.33$ kpc is the location of the Sun. We then adopt several configurations for the values for the parameters B_0 , r_D and z_D , as shown in the table in figure 1:

- Model 1 (MF1 for “Magnetic Field 1” hereafter) is the configuration used in [32] and very similar to the one used in the original GALPROP code (it differs by the normalization factor B_0 , which has changed a few times in the GALPROP literature [49, 51, 52]).
- Model 2 (“MF2”) is loosely based on the findings of [44] (and previous [50]). Following one of the models in [44] we take a value of $2.1 \mu\text{G}$ for the intensity of the disk regular field at solar location (we report it to our value for r_{\odot}); we then add an intensity of $3 \mu\text{G}$ to account for the random component. The resulting field is steeper in r and in z than MF1 and reaches slightly higher values at the GC.
- Model 3 (“MF3”) is modeled following [53]. It is substantially higher at the location of the Earth and has larger scale heights both in r and in z , i.e. it extends much farther out in both directions.

2.2 Other astrophysical ingredients

In this section we recall the other astrophysical ingredients involved in the computations. We illustrate most of them in figure 1. As a general rule, we want to use state-of-the-art but standard ingredients, in order to allow easy comparison with other work.

- The **DM density profile** in the Galaxy. We adopt the 6 standard profiles as defined in [32] (to which we refer for references and some discussion). They always assume spherical symmetry and their functional forms as functions of the galactocentric coor-

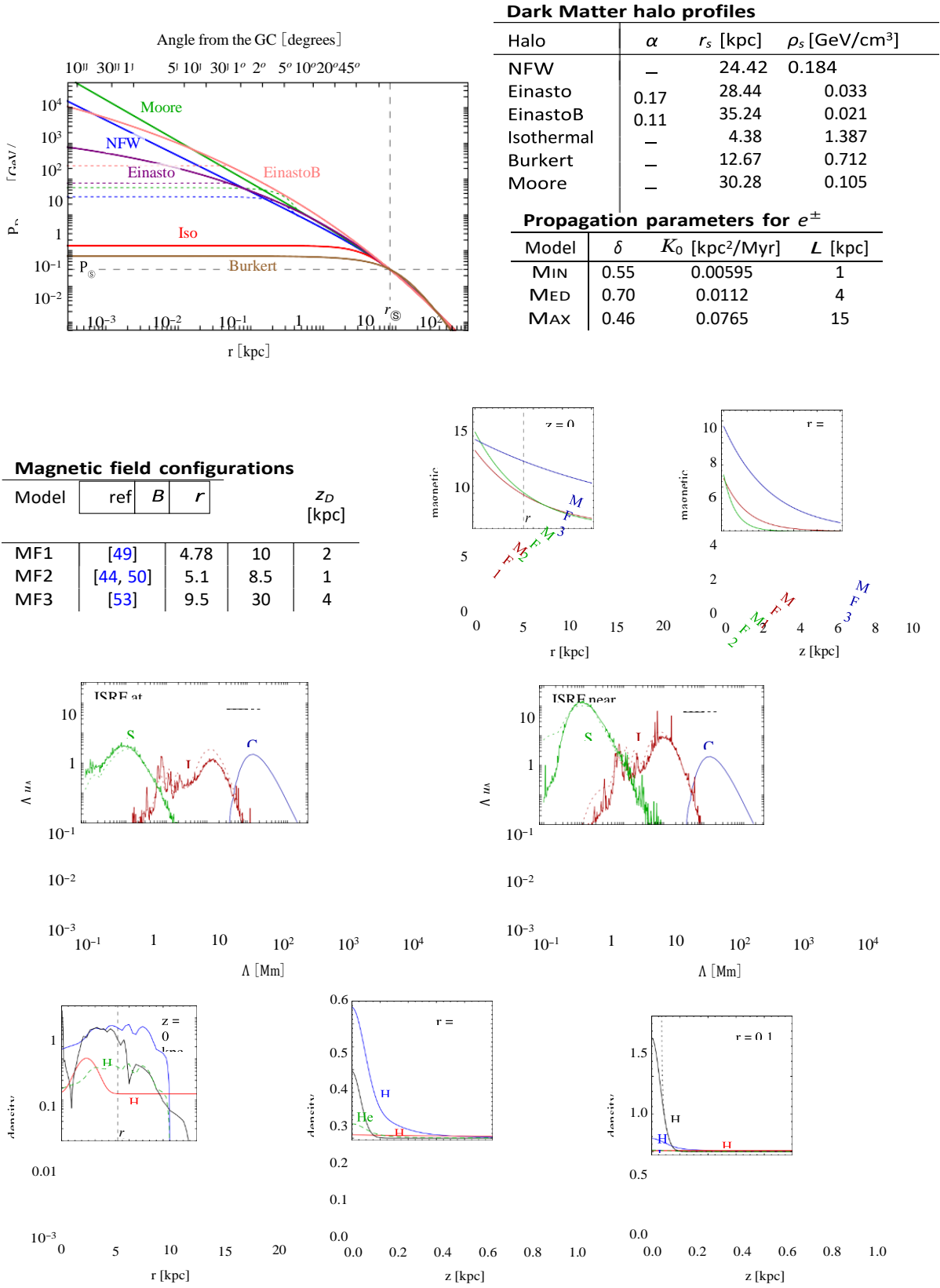


Figure 1. Collection of the **astrophysical ingredients** we use. Top row: DM profiles (figure taken from [32]) and propagation parameters for electrons and positrons in the Galaxy. Second row: magnetic field configurations. Third row: illustration of the ISRF in two sample locations. Bottom row: illustration of the galactic gas densities (figure from [20]).

JCAP0912N

dinate² r read:

$$\begin{aligned}
 \text{NFW : } \rho_{\text{NFW}}(\mathbf{r}) &= \rho_s \frac{r_s}{1 + \frac{r}{r_s}}^{-2} \\
 \text{Isothermal : } \rho_{\text{Iso}}(\mathbf{r}) &= \frac{\rho_s}{1 + (\mathbf{r}/r_c)^\alpha} \\
 \text{Burkert : } \rho_{\text{Bur}}(\mathbf{r}) &= \frac{\rho_s}{(1 + \mathbf{r}/r_c)(1 + (\mathbf{r}/r_c)^2)} \\
 \text{Moore : } \rho_{\text{Moo}}(\mathbf{r}) &= \rho_s \frac{r_s^{1.16}}{r} \left(1 + \frac{r}{r_s}\right)^{-1.84}
 \end{aligned} \tag{2.2}$$

The profiles are plotted in the top left panel of figure 1 and their parameters reported in the corresponding table. We remind here that they are normalized by requiring that the density at the location of the Sun $r_{\odot} = 8.33$ kpc be 0.3 GeV/cm^3 and the total mass of the Milky Way be $4.7 \times 10^{11} M_{\odot}$. Satisfying these two criteria allows to fix the r_s and ρ_s parameters. Other normalizations (e.g. of the density at the Sun) are used in the literature and they would modify the profiles.

- **Electron and positron propagation parameters.** These have to be plugged in the diffusion-loss equation that we will discuss in detail in section 3.2. We adopt the standard choices MIN, MED, MAX as reported in the table in figure 1. Here δ and K_0 are the exponent of the energy dependence of the diffusion coefficient and its normalization while L is the thickness of the diffusive halo. While an updated assessment of the validity of these ranges of parameters would be welcome, especially in the light of the wealth of recent data,³ this would be beyond our current scope. We continue using the standard values reported here also for consistency reasons.
- **InterStellar Radiation Field (ISRF).** Electrons and positrons propagating in the galactic halo lose energy by Inverse Compton scattering on the ambient light. A detailed description of this radiation field is therefore important in order to reliably compute the energy losses. We adopt the latest radiation maps extracted from GALPROP [62, 63].⁴ These replace the ones formerly used in the literature, and in particular in [32]. In figure 1 we draw the two maps in two sample locations (at the Earth and near the galactic center) and compare them. One clearly sees the three different components (StarLight SL, InfraRed IR and the CMB blackbody spectrum). The current map is much more detailed and normalization differences of the order of a factor 2 are visible, but the overall behavior is confirmed. We will see that these small differences have an (equally small) impact on the observables entering e^{\pm} propagation.

²We distinguish the notation between the galactocentric coordinate \mathbf{r} and the cylindrical coordinates (r, z) that we will use in most of the following. Obviously $\mathbf{r} = \sqrt{r^2 + z^2}$.

³For instance, a string of recent papers, based precisely on synchrotron radio emission [54–57] but also on positrons [58, 59] and somewhat also on gamma rays [60] and antiprotons [61], finds that the thin halo predicted by MIN is seriously disfavored.

⁴The files are available on GALPROP's website galprop.stanford.edu/resources.php?option=data. As discussed in [62], the newest files are based on calculations using the FRANKIE code (Fast Radiation transport Numerical Kode for Interstellar Emission), described in [63].

- **Gas maps.** Electrons and positrons also lose energy by processes occurring on the interstellar atomic and molecular gas (Coulomb interactions, ionization, bremsstrahlung). We use the gas maps described in [64] and already used in [20]. We refer to the latter for some discussion. They are illustrated in figure 1. The relevant species are atomic (HI) and molecular (H₂) neutral hydrogen, ionized hydrogen (HII), neutral atomic helium (He) and ionized helium (which is however irrelevant for all practical purposes). As discussed in particular in [20], these maps represent a reliable description of the coarsegrained distribution of gas in the Galaxy, but miss important features at small scales. In particular, they do not take into account the regions characterized by a much higher gas density (up to 2 or 3 orders of magnitude with respect to the coarse grained maps) which are known to exist close to the galactic center (typically at $r \lesssim 200$ pc scales). For the purpose of the general tools that we are developing in this work, we do not correct by hand the coarse-grid maps by adding the high density regions (contrary to what was done in [20]) but we will allow the user to change the overall normalization of the gas density in the energy loss function that we will describe below.

3 Results

3.1 An improved energy loss function for e^\pm in the Galaxy

Using the ingredients described above, we compute an improved function describing the energy losses of electrons and positrons during their propagation in the Galaxy. It includes energy losses by Coulomb interactions with the interstellar gas, by ionization of the same gas, by bremsstrahlung on the same gas, by ICS (using the updated ISRF presented in section 2.2) and by synchrotron emission, with the choice of the three magnetic field models discussed in section 2.1. Schematically:

$$b_{\text{tot}}(E, r, z) \equiv -\frac{dE}{dt} = b_{\text{Coul+ioniz}} + b_{\text{brem}} + b_{\text{ICS}} + b_{\text{syn}} \quad (3.1)$$

where E is the energy of the electron or positron and r and z are cylindrical galactic coordinates. Such a function is provided on the website [65] in the format `btot[E,r,z,gasnorm,MF]`, where `gasnorm` allows to change the overall normalization of the gas densities and `MF` is a flag selecting the magnetic field model. We now recall the different components of this function⁵ and illustrate its main features in figure 2 and 3. Details can be found in standard references such as [66, 67] as well as in [31, 32].

- **Energy losses by Coulomb interaction and ionization** on neutral matter are described by

$$b^{\text{neut}}(E, r, z) = \frac{9}{4} c \sigma_T m_e \sum_i n_i Z_i \log \frac{E}{m_e} + \frac{2}{3} \log \frac{m_e}{\Lambda} \quad (3.2)$$

where c is the speed of light, $\sigma_T = 8\pi r_e^2/3$, with $r_e = \alpha_{em}/m_e$, is the Thompson cross section, n_i is the number density of gas species i with atomic number Z_i and ΔE_i is its average excitation energy (it equals 15 eV for hydrogen and 41.5 eV for helium).

On ionized matter, one has

$$b^{\text{ion}}(E, r, z) = \frac{3}{4} c \sigma_T m_e n_e \log \frac{E}{m_e} + 2 \log \frac{m_e}{E_{\text{pla}}} \quad (3.3)$$

⁵Notice that we will always limit ourselves to the case of relativistic electrons.

where n_e is the electron density and $E_{\text{pla}} = \sqrt{\frac{4\pi n_e r_p^3 m_e}{\alpha}}$ corresponds to the characteristic energy of the plasma.

The total energy losses for Coulomb interactions and ionization processes, $b_{\text{Coul+ioniz}} = b^{\text{neut}} + b^{\text{ion}}$, will therefore be given by the sum of eq. (3.2) and eq. (3.3) with, respectively, the densities of ionized and neutral gas species. In both cases, energy losses are *essentially independent* of E , since the constant terms in the brackets are numerically dominant.

- **Energy losses by bremsstrahlung** are described by

$$b_{\text{brem}}(E, r, z) = c \sum_i n_i(r, z) \int_0^E dE_\gamma E_\gamma \frac{d\sigma_i}{dE_\gamma}, \quad (3.4)$$

where E_γ corresponds to the energy of the gamma ray emitted in each bremsstrahlung process. The differential cross-section reads

$$\frac{d\sigma_i(E, E_\gamma)}{dE_\gamma} = \frac{3\alpha_{\text{em}}\sigma_T}{8\pi E_\gamma} \left(1 + \frac{E_\gamma}{E} \right)^2 \varphi_1^i - \frac{E_\gamma}{E} \varphi_2^i, \quad (3.5)$$

where φ_1^i are scattering functions dependent on the properties of the scattering system.

For a completely ionized gas plasma with charge Z one has

$$\varphi_1^{\text{ion}}(E, E_\gamma) = \varphi_2^{\text{ion}}(E, E_\gamma) = 4(Z^2 + Z) \log \frac{2E}{m_e} - \frac{E - E_\gamma}{E}, \quad (3.6)$$

and thus the energy losses in this regime ('weak shielding') read

$$b_{\text{brem}}^{\text{ion}} = \frac{3}{8\pi} c \alpha_{\text{em}} \sigma_T n \sum_i Z_i(Z_i + 1) \log \frac{2E}{m_e} - \frac{E - E_\gamma}{E}. \quad (3.7)$$

On the other hand, for atomic neutral matter the scattering functions have a more complicated dependence, which is usually parameterized in terms of the quantity $\Delta = \frac{E_\gamma m_e}{4\alpha_{\text{em}} E(E - E_\gamma)}$. For the relativistic regime we are interested in, since $E \gg 1$ MeV always, one basically cares for the limit $\Delta \rightarrow 0$ for which these functions are constant and take the following numerical values:

$$\begin{aligned} \varphi_1^{\text{H}}(\Delta = 0) &\equiv \varphi_1^{\text{H}} = 45.79, \\ \varphi_2^{\text{H}}(\Delta = 0) &\equiv \varphi_2^{\text{H}} = 44.46, \\ \varphi_1^{\text{He}}(\Delta = 0) &\equiv \varphi_1^{\text{He}} = 134.60, \\ \varphi_2^{\text{He}}(\Delta = 0) &\equiv \varphi_2^{\text{He}} = 131.40, \\ \varphi_{(1,2)}^{\text{H}_2}(\Delta = 0) &\equiv \varphi_{(1,2),\text{ss}}^{\text{H}_2} \end{aligned} \quad (3.8)$$

The subscript $_{ss}$ in this notation refers to the fact that this regime is usually called 'strong-shielding' because the atomic nucleus is screened by the bound electrons and the impinging e^{\pm} have to force the shield. In this limit the energy losses read

$$b_{hrp}^{neut} = \frac{3}{8} c \alpha_p \sigma_T n_i \left[\frac{4}{3} \phi_1^i - \frac{1}{3} \phi_2^i \right] E. \quad (3.9)$$

.TCAPN912N

The total energy losses for bremsstrahlung will therefore be given by the sum of eq. (3.7) and eq. (3.9) with, respectively, the densities of ionized and neutral gas species. In both cases, at leading order, energy losses are *linearly dependent* on E . A further logarithmic dependence arises for scattering in ionized medium, while a small additional energy dependence is also found in neutral medium if one accounts for the effect of finite Δ .

- **Energy losses by Inverse Compton Scattering** are described, in exact form, by

$$b_{\text{ICS}} = 3c\sigma_T \int_0^\infty d\epsilon \int_{1/\Delta}^1 d\alpha \frac{(4\gamma^2 - \Gamma_\epsilon)q - 1}{(1 + \Gamma_\epsilon q)^3} 2q \ln q + q + \frac{1}{2} \frac{(\Gamma_\epsilon q)^2}{1 + \Gamma_\epsilon q} \quad (3.10)$$

where $n(\epsilon, r, z)$ is the number density (per unit volume and unit energy) of photons of the ISRF, with energy ϵ , $\gamma = E/m_e$ is the relativistic factor of the electrons and positrons and $\Gamma_\epsilon = 4\epsilon\gamma/m_e$.

In the Thomson limit (valid for low electron energies), they reduce to the particularly compact expression

$$b_{\text{ICS}} = \frac{4c\sigma_T}{3m_e^2} E^2 \int_0^\infty d\epsilon \epsilon n(\epsilon, r, z) \quad [\text{Thomson limit}], \quad (3.11)$$

which makes the energy density in the photon bath $u_{\text{ISRF}} = \int d\epsilon \epsilon n(\epsilon, r, z)$ apparent.

The ICS energy losses are *proportional to* E^2 (as evident in the Thomson expression, but also in eq. (3.10) noting that $4\gamma^2 q$ is the dominant piece at the numerator) for small E . For large E , the dependence softens.

- **Energy losses by synchrotron emission** are described by

$$b_{\text{syn}} = \frac{4c\sigma_T}{3m_e^2} E^2 \frac{B^2}{8\pi} \quad (3.12)$$

where B is the strength of the magnetic field. This formula is in close analogy to the one for ICS losses: the integral term in (3.11) and the B^2 term in (3.12) correspond to the energy density in the photon bath and in the magnetic field respectively. In particular, synchrotron energy losses are also *proportional to* E^2 .

In figure 3, left panel, we plot the different energy losses discussed above, at the location of the Earth. The different dependences on the e^\pm energy are clearly shown. Hence, the dominant process in the different energy ranges are, in order, ionization (including Coulomb), bremsstrahlung, ICS and synchrotron.

In figure 2 we plot the total energy loss function in several locations in the galactic plane (left panel) and at several galactic altitudes at the location of the Earth (right panel). We compare it with the previous version of the same function not including the improvements listed at the beginning of this section (dashed colored lines). The main modification is apparent at low energies and it is due to the inclusion of bremsstrahlung, ionization and Coulomb losses. Being related to the presence of gas, it disappears at the locations outside of the galactic disk.

The modifications due to the use of the new ISRF is minimal and mostly concentrated at low energies, so it is hidden by the dominant bremsstrahlung, ionization and Coulomb

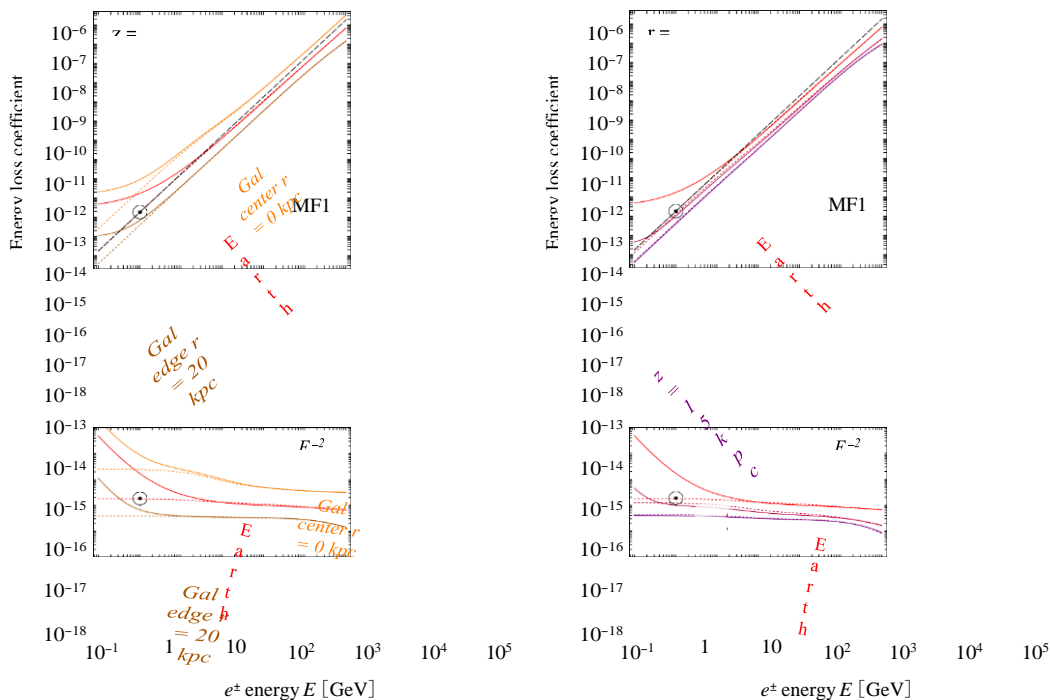


Figure 2. Energy loss function for electrons and positrons in the Milky Way. Left panel: in the galactic disk ($z = 0$), at several locations along the radial coordinate r . Right panel: above (or below) the location of the Earth along the coordinate z . Here the magnetic field model MF1 has been fixed for definiteness. The circled dot identifies the constant value sometimes adopted. The dotted colored lines are the same function before the improvements listed in section 3.1. This figure replaces the analogous one (figure 5) of [32].

losses in most cases except well outside of the plane where the absence of gas makes it indeed visible (see the slight difference between the solid and dashed purple lines corresponding to $z = 15$ kpc in the right panel).

While in figure 3 left and in figure 2 we have chosen the MF1 for definiteness, in figure 3 right we explore the impact of changing the magnetic field model. Not surprisingly, in $(r, z) = (3, 0)$ kpc the synchrotron energy losses are larger than at $(r, z) = (8.33, 1)$ kpc, and the ordering reflects the intensity of the magnetic field in the corresponding model (see figure 1).

In the next subsection we employ this improved energy loss function to compute the halo functions for electrons and positrons in the Galaxy.

3.2 Revised halo functions for e^\pm in the Galaxy

We recall that the number density $f(E, r, z)$ of electrons or positrons at the position (r, z) per unit energy E is obtained solving the standard diffusion-loss differential equation

$$-K_0 \frac{E}{\text{GeV}}^\delta \nabla^2 f - \frac{\partial}{\partial E} b(E, r, z) f = Q(E, r, z), \quad (3.13)$$

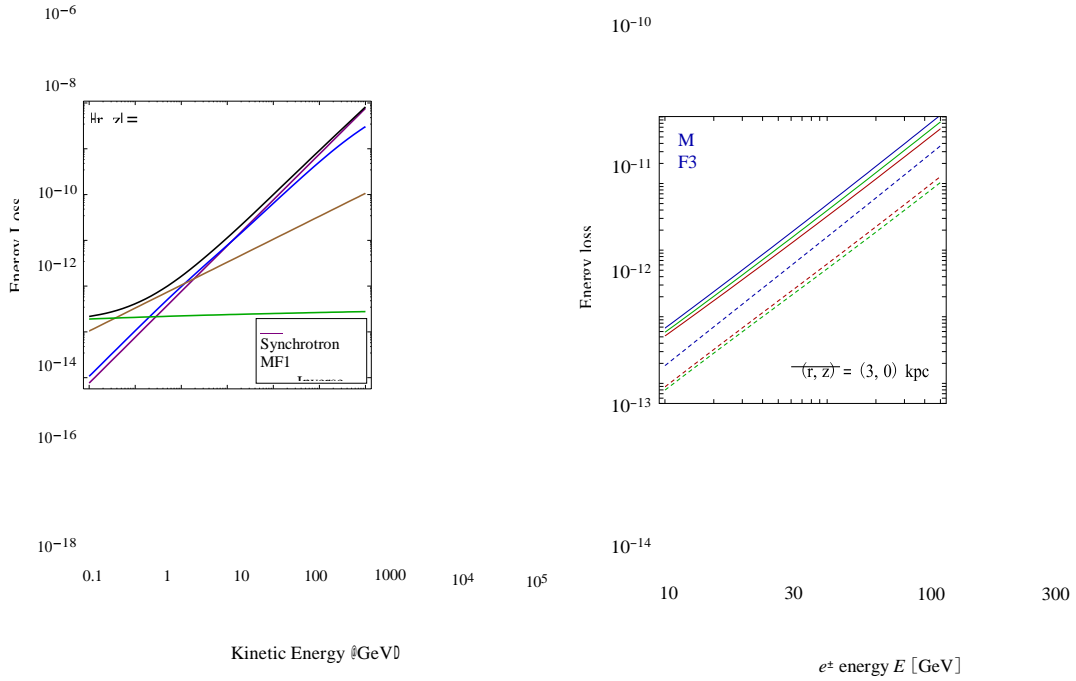


Figure 3. Left panel: the **different processes** contributing to the energy loss function, at the location of the Earth. Right panel: the dependence of the energy loss coefficient function on the **choice of magnetic field model**, in two locations.

where the first term (which accounts for diffusion) is expressed in terms of the propagation parameters discussed in section 2.2. The source term Q reads

$$\begin{aligned}
 Q = & \frac{1}{2} \frac{\rho}{M_{\text{DM}}} \sum_f \frac{d}{dE} \frac{f}{\langle \sigma v \rangle_f} \quad \text{(annihilation)} \quad (3.14) \\
 & + \frac{\rho}{M_{\text{DM}}} \sum_f \Gamma_f \frac{f}{dE} \quad \text{(decay)}
 \end{aligned}$$

The function dN_{e^\pm}/dE is the electrons or positron spectrum from DM annihilations in a given final state channel f .

The solution for f , or rather for the energy spectrum of electrons or positrons $d\Phi_{e^\pm}/dE$, can be cast [32] in terms of a convolution of the injection spectrum dN_{e^\pm}/dE with the *generalized halo functions* $I(E, E_s, r, z)$, which are essentially the Green's functions from a source energy E_s to the energy E :

$$\begin{aligned}
\frac{d\Phi_{e^\pm}}{d} (E, r, z) &\equiv \frac{c}{4} f(E, r, z) = \int_{M_{\text{DM}}} \quad (3.15) \\
&= \frac{1}{2} \frac{\rho}{r^2} \sum_f \int_{M_{\text{DM}}} \langle \sigma v \rangle_f \frac{dN_{e^\pm}^f}{dE_s} (E_s) \cdot I(E, E_s, r, z) \quad (\text{annihilation}) \\
&\quad + 4\pi b(E, r, z) \sum_f \int_{M_{\text{DM}}} dN_{e^\pm}
\end{aligned}$$

The halo functions I , which replace those in [32], are available on the website [65], in the format `ElectronHaloFunctGalaxyAnn[halo,propag,MF][log10x,log10Es,r,z]` (and analogously `ElectronHaloFunctGalaxyDec` for decay) where $x = E/E_s$.

.TCAPD9120

These functions, particularized at the location of the Earth, are plotted in figure 4 for reference. Comparing with the equivalent functions presented in [32], the main difference consists in the evident rise towards small values of the electron energy fraction x ,⁶ which is the direct consequence of the additional, low-energy losses. For small injection energies (warmer colors), the rise occurs ‘early’ while moving towards small x , consistently with the fact that the new losses are already relevant. For large injection energies (cold colors) the rise occurs at small x when $E \approx 10$ GeV (the regime at which the new losses set in). For

MIN the rise does not happen for large injection energy, as e^\pm are not efficiently confined on the characteristic scale of the energy losses. At a location closer to the Galactic Center (not plotted), where energy losses are more relevant, the rise is present.

In figure 5 we show the electron spectra, for a few cases. These are in direct correspondence with the left panels of figure 13 of [32]. The differences amount to a factor of a few, up to almost one order of magnitude, especially at low energies (where indeed the new losses are effective). In the right panels of figure 5 we show the spectra computed in a location closer to the Galactic Center. It is curious to note that, in this case, the fluxes do not follow the intuitive normalization ordering MIN \rightarrow MED \rightarrow MAX; in fact, MAX yields the most suppressed flux. This is just a consequence of the relative importance of the various propagation parameters which is different in the Earth’s local neighborhood with respect to that location. Indeed, MIN, MED and MAX are determined as the sets that minimize/maximize the fluxes at Earth.

3.3 Synchrotron halo functions

In this subsection we want to obtain the *generalized halo functions for synchrotron emission* which constitute one of the two main technical outputs of this paper. We first review the basics of synchrotron emission and then come to the definition of the functions we need.

The synchrotron power (in $\text{erg s}^{-1} \text{Hz}^{-1}$) emitted in a certain frequency ν by an isotropic distribution of relativistic electrons with energy E in a uniform magnetic field is

$$P_{\text{syn}}(\nu, E, \alpha) = \frac{\sqrt{3} e^3 B \sin \alpha}{m_e c^2} F(x) \quad (3.16)$$

with

$$x = \nu/\nu_c', \quad \nu_c' = \frac{1}{2} \nu \sin \alpha, \quad \nu_c = \frac{3}{2\pi} \frac{e}{m_e c} B \gamma^2.$$

Here B is the strength of the magnetic field, α the angle between the line of sight and the magnetic field direction and $\gamma = E/m_e$ the Lorentz factor of the electron or positron. The synchrotron kernel $F(x)$ is

$$F(x) = x \int_x^\infty K_{5/3}(x') dx'$$

where K_n is the modified Bessel function of the second kind of order n . In presence of a randomly oriented magnetic field, which is the case of our interest, the synchrotron power has to be averaged over the pitch angle α :

$$\overline{P_{\text{syn}}(\nu, E)} = \frac{1}{\pi} \int_0^\pi d\alpha \sin(\alpha) P_{\text{syn}}(\nu, E, \alpha)$$

⁶The functions are defined down to the value of x corresponding to $E = 1$ MeV, to avoid the regime of highly non-relativistic electrons.

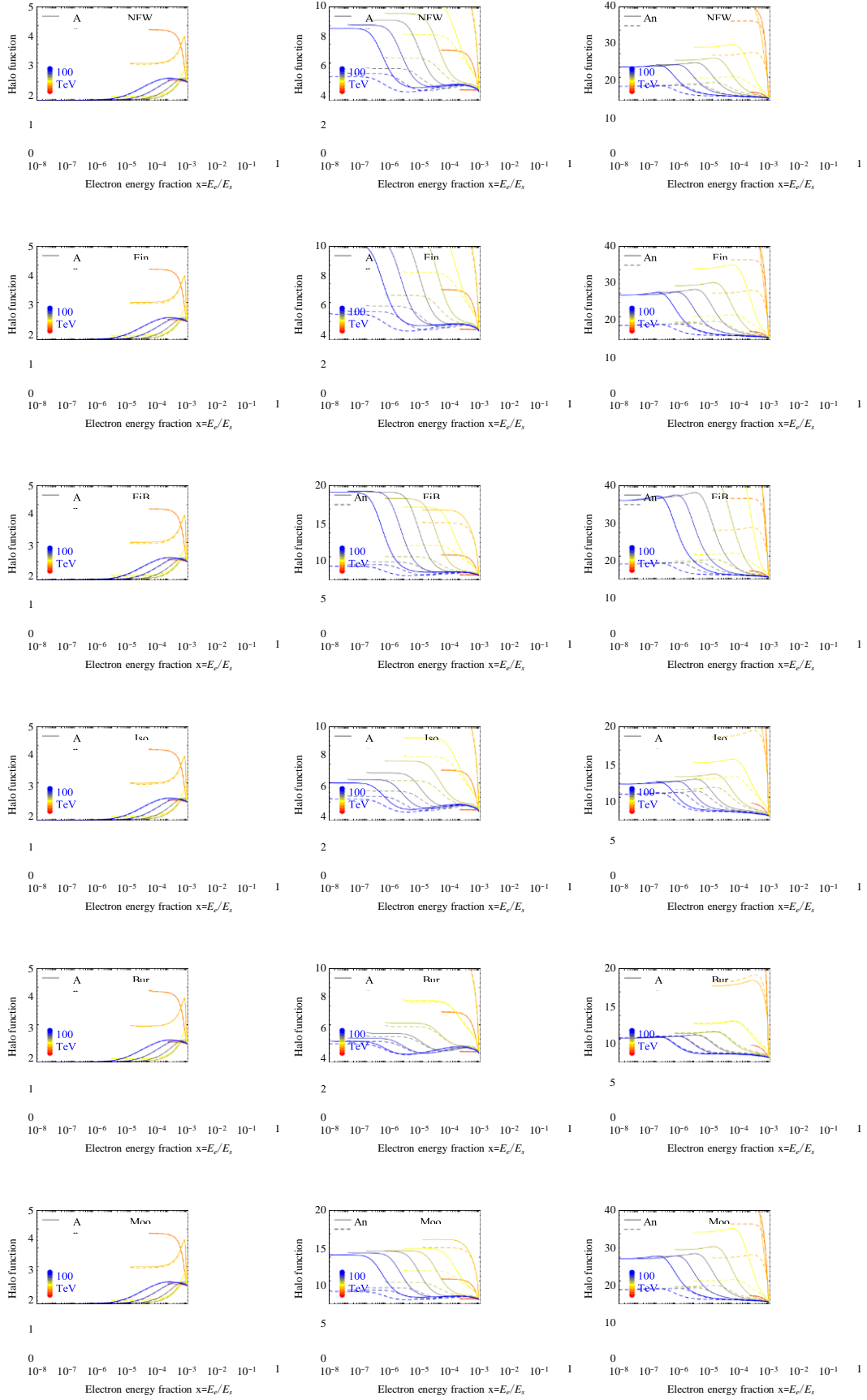


Figure 4. Generalized halo functions for electrons or positrons, for several different values of the injection energy E_s (color coded). This figure replaces the analogous one (figure 6) of [32].

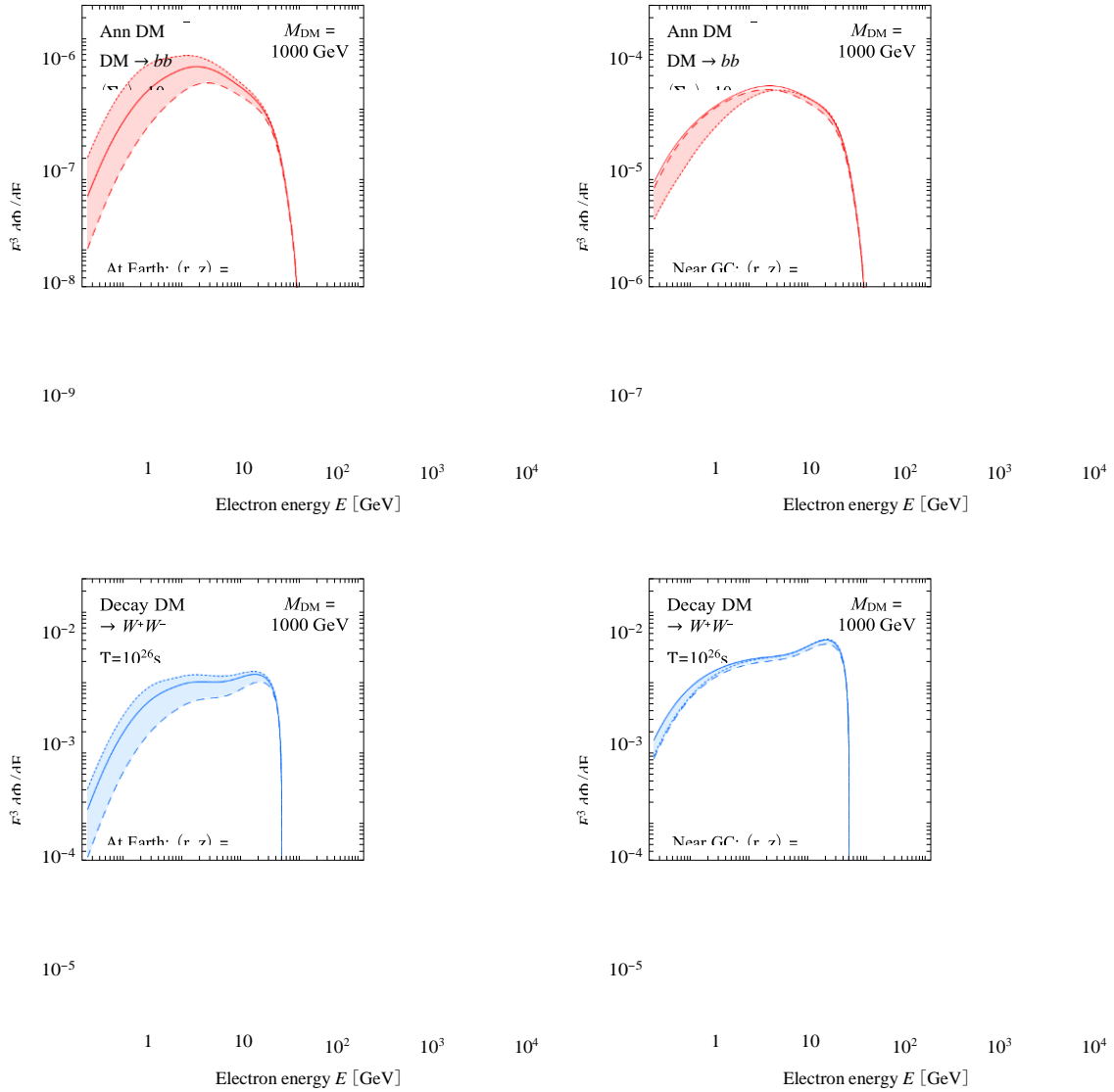


Figure 5. Fluxes of electrons or positrons, after propagation, for the case of annihilations (top row) and decay (bottom row), shown at two different locations.

For relativistic electrons ($\gamma \geq 2$) this corresponds to [39]:

$$P_{\text{syn}}(\nu, E) = 2 \frac{\sqrt{3}}{3} \frac{e^3 B^2}{m_e c^2} \gamma^2 K_{4/3}(\gamma) K_{1/3}(\gamma) - \frac{5}{3} \gamma^2 K_{4/3}(\gamma)^2 - K_{1/3}(\gamma)^2 \quad (3.18)$$

with $\gamma = v/v_c$. Integrating this quantity over ν yields the total power emitted by an electron of energy E in all frequencies, i.e. eq. (3.12).

Next, the synchrotron emissivity has to be computed convolving the synchrotron power in eq. (3.18) with the number density of electrons per unit energy $f(E, r, z)$ (in $\text{cm}^{-3} \text{GeV}^{-1}$) discussed in section 3.2

$$j_{\text{syn}}(\nu, r, z) = 2 \int_{m_e}^{M_{\text{DM}}/2} dE P_{\text{syn}}(\nu, E) f(E, r, z) \quad (3.19)$$

where the minimal and maximal energies of the emitting electrons are determined by the electron mass and the mass of the DM particle. The ‘/2’ notation applies to the decay case. The overall factor 2 takes into account that, besides the electrons, an equal population of positrons radiates.

Finally, the observable in which we are interested is the intensity \mathbf{I} of the synchrotron emission (in $\text{erg cm}^{-2} \text{s}^{-1} \text{Hz}^{-1} \text{sr}^{-1}$) from a certain direction of observation. This is obtained by integrating the emissivity of eq. (3.19) along the line-of-sight. Schematically:

$$\mathbf{I}(\nu, b, l) = \int_{\text{l.o.s.}} ds \frac{j_{\text{syn}}(\nu, r, z)}{4\pi} \quad (3.20)$$

where it is intended that a point in (r, z) is identified by the parameter s along the line of observation individuated by the galactic latitude b and longitude l : $r(s, l, b), z(s, l, b)$.⁷

Recollecting eq. (3.20) and eq. (3.15), the synchrotron intensity \mathbf{I} at a given frequency ν and for given galactic coordinates (b, l) can be cast as:

$$T(\nu, l) = \frac{1}{4\pi} \frac{\rho_{\oplus}}{M_{\text{DM}}} \int_{M_{\text{DM}}/2}^{M_{\text{DM}}} dE_s \sum_f \Gamma_f \frac{dN_e^{\pm}}{dE} (E_s) I_{\text{syn}}(E_s, \nu, l, b) \quad (\text{decay}) \quad (3.21)$$

with the *generalized synchrotron halo function* $I_{\text{syn}}(\nu, E_s, l, b)$ defined as

$$I_{\text{syn}}(E_s, \nu) = \int_{\text{l.o.s.}} ds \frac{\rho(r, z)}{\rho_{\oplus}} \eta \frac{1}{2} \int_{E_s}^{E_s} \frac{P_{\text{syn}}(\nu, E)}{m_e} dE \quad I(E, E_s, r,$$

where $\eta = 1, 2$ for the decay or annihilation cases respectively and again implicitly $r(s, l, b), z(s, l, b)$. The units of I_{syn} are erg/Hz .

The synchrotron halo functions I_{syn} are available on the website [65], in the format `ISynAnnI[halo,propag,MF][log10Es,log10ν,l,b]` (and analogously `ISynDecl` for decay). They are also plotted, for reference, in figure 6 for the annihilation case and in figure 7 for the decay case.

The last step needed in order to make contact with actual radio surveys consists in expressing the synchrotron signal in terms of brightness temperature $T(\nu)$ (in K) which is defined as:

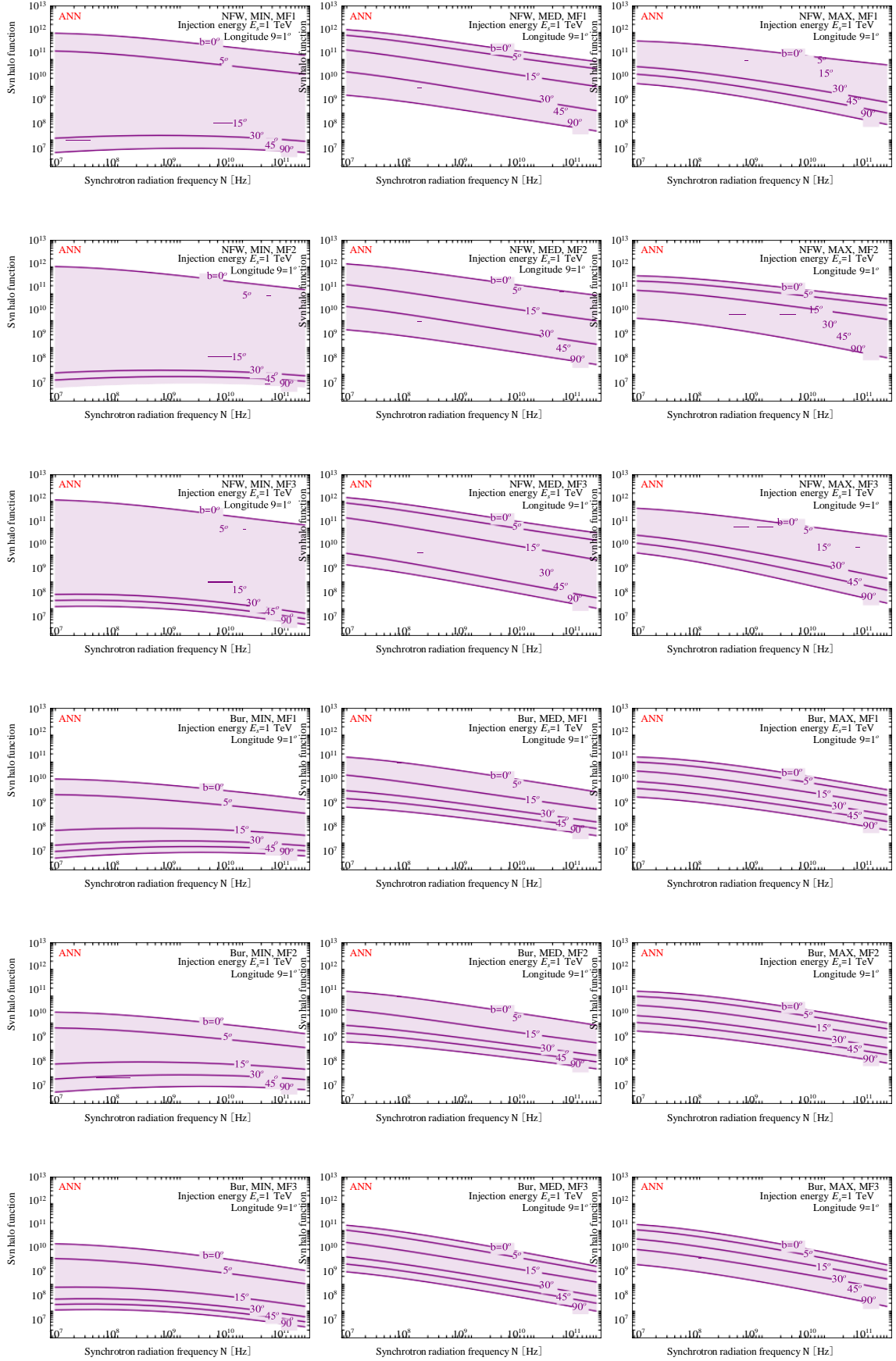
$$T(\nu) = \frac{c^2 \mathbf{I}(\nu)}{2 \nu^2 k_B} \quad (3.23)$$

with k_B the Boltzmann constant. In figure 8 we plot such quantity for a few different choices of profiles and propagation parameters. Although a comparison with previous results (e.g. in [10] and [15]) is not possible in full details, we have checked that, removing our additional refinements, we recover those previous results in most cases.⁸

Before moving on, we would like to point out that our tools can be adapted for usage in a more general way. Notably, if a user is interested in the synchrotron signatures from

⁷We remind the explicit relations $r(s, l, b) = s \sin b, z(s, l, b) = \sqrt{r_{\oplus}^2 + s^2 - 2 r_{\oplus} s \cos b \cos l}$.

⁸We cannot however fully reproduce the dependence on the choice of profile in [15]: we find that the synchrotron signal is independent on the choice of profile at large latitudes (as we expect from the self-similarity of such profiles at large radii) while their plots show a sizable residual difference.



JCAP0912N

Figure 6. Generalized synchrotron halo functions, for the DM annihilation case. The upper 9 panels correspond to an NFW profile, the lower 9 to Burkert; the columns correspond to a fixed propagation model, the rows to a fixed magnetic field model.

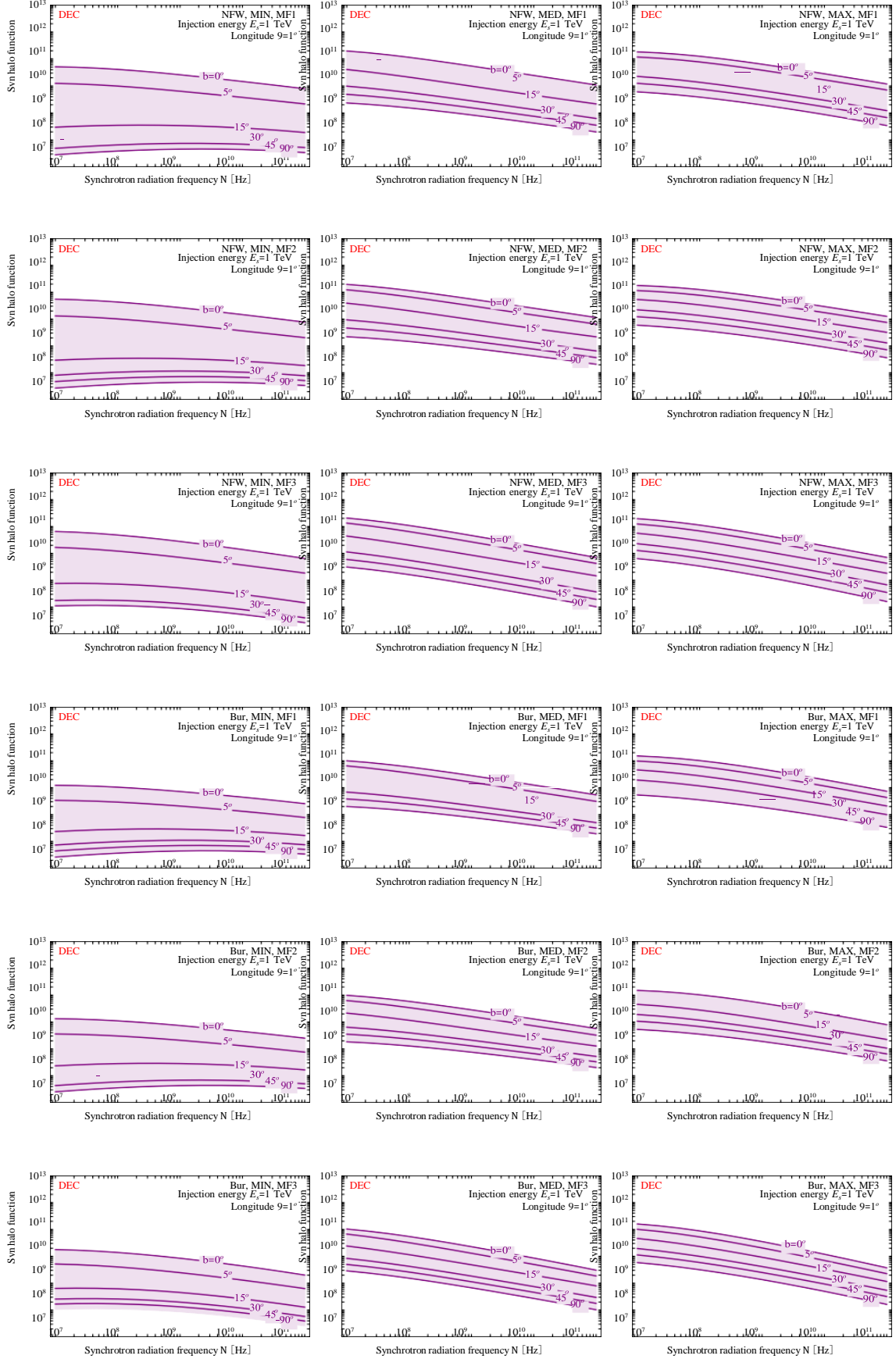


Figure 7. Generalized synchrotron halo functions, for the DM decay case.

.JCNAPN9(2N

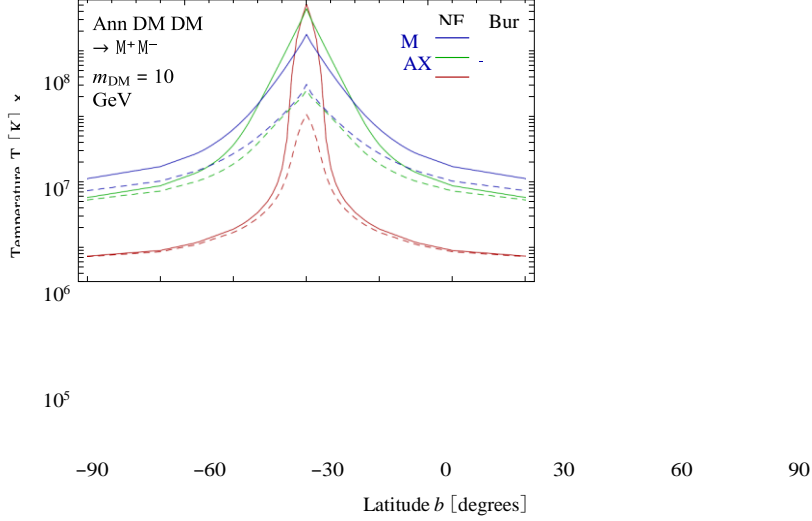


Figure 8. Synchrotron signal (temperature) at 45 MHz, plotted against the galactic latitude, for several choices of DM profile and propagation scheme.

a custom galactic magnetic field configuration, she can employ our electron and positron galactic density and fold it with the desired MF. This is formally not self-consistent (one would be computing the synchrotron energy losses with one MF configuration but the synchrotron emission with a different one), but it can be acceptable for practical purposes in the conditions in which the dominant energy losses are due to other processes like ICS and bremsstrahlung (corresponding to high energies or to regions where the magnetic field is not too large, see the discussion in section 3.1). Technically, one needs to compute the quantity $f(E, r, z)$ as presented in eq. (3.15) using the electron and positron halo functions provided in section 3.2. The quantity f can then just be plugged in eq. (3.19) and then eq. (3.20) to compute the synchrotron emission \mathbf{I} . The custom configuration of the MF enters in determining the corresponding synchrotron power with eq. (3.18).

3.4 Bremsstrahlung halo functions

In this subsection, in turn, we want to obtain the *generalized halo functions for bremsstrahlung emission*, the other main technical output of this paper. The computation follows quite closely the one for synchrotron in the previous subsection, using also the formalism for bremsstrahlung spelled out in section 3.1. We summarize here the main ingredients for completeness.

In close analogy with eq. (3.21), the bremsstrahlung differential flux (in $\text{GeV}^{-1}\text{cm}^{-2}\text{s}^{-1}\text{sr}^{-1}$) reads:

$$\begin{aligned}
 d\Phi_{\text{brem}\gamma} = & \frac{1}{r_{\odot}} \frac{\rho_{\odot}}{2 M_{\text{DM}}} \int_{M_{\text{DM}}/2}^{2 M_{\text{DM}}} dE_s \sum_f \langle \sigma v \rangle_f \frac{dN^f}{dE} (E_s) I_{\text{brem}}(E_s, E_{\gamma}, l, b) \quad (\text{annihilation}) \\
 & + \frac{1}{r_{\odot}} \frac{\rho_{\odot}}{M_{\text{DM}}} \int_{M_{\text{DM}}/2}^{2 M_{\text{DM}}} dE_s \sum_f \frac{dN^f}{dE} (E_s) I_{\text{brem}}(E_s, E_{\gamma}, l, b) \quad (\text{decay}) \quad (3.24)
 \end{aligned}$$

where now (in analogy with eq. (3.22)) the *generalized halo function for bremsstrahlung* I_{brem} (E_s, E_γ, l, b), which has units of GeV, is defined as

$$I_{\text{brem}}(E_s, E_\gamma, l, b) = \int_{\text{l.o.s.}} \frac{ds}{r_\odot} \frac{\rho(r, z)}{\rho_\odot} \eta \int_a^{E_s} \frac{P_{\text{brem}}(E_\gamma, E, r(s, \vartheta))}{E} I(E, \dots)$$

The bremsstrahlung power consists in

$$P_{\text{brem}}(E_s, E, \star) = c E \sum_i n_i(\star) \frac{d\sigma_i(E_\gamma, E)}{d\Omega} \quad (3.26)$$

where n_i are the number densities of the gas species and the bremsstrahlung cross section was given in eq. (3.5).

The bremsstrahlung halo functions I_{brem} are again available on the website [65], in the format `IBremAnnI[halo,propag,MF][log10Es,log10Eγ,l,b]` (and analogously `IBremDecl` for decay). They are plotted in figure 9 and 10 (annihilation and decay cases), for reference.

In figure 11 we plot the resulting bremsstrahlung line-of-sight γ -ray fluxes, for a few cases. The agreement with previous calculations (notably [20]) has been verified. We also cross checked with fully numerical computations done using `GammaSky` [54, 68]. While the spectral shape is in very good agreement, we find a difference in overall normalization of the fluxes along lines of sight passing close to the Galactic Center. This is due to the fact that `GammaSky`, like `GalProp`, corrects the bremsstrahlung emissivities by adjusting the normalization of the gas densities in each galactocentric ring, in particular close to the Galactic Center (see [69], and [20] for a short discussion). We decide to instead use consistently the same maps for energy losses and bremsstrahlung emission.

4 Conclusions

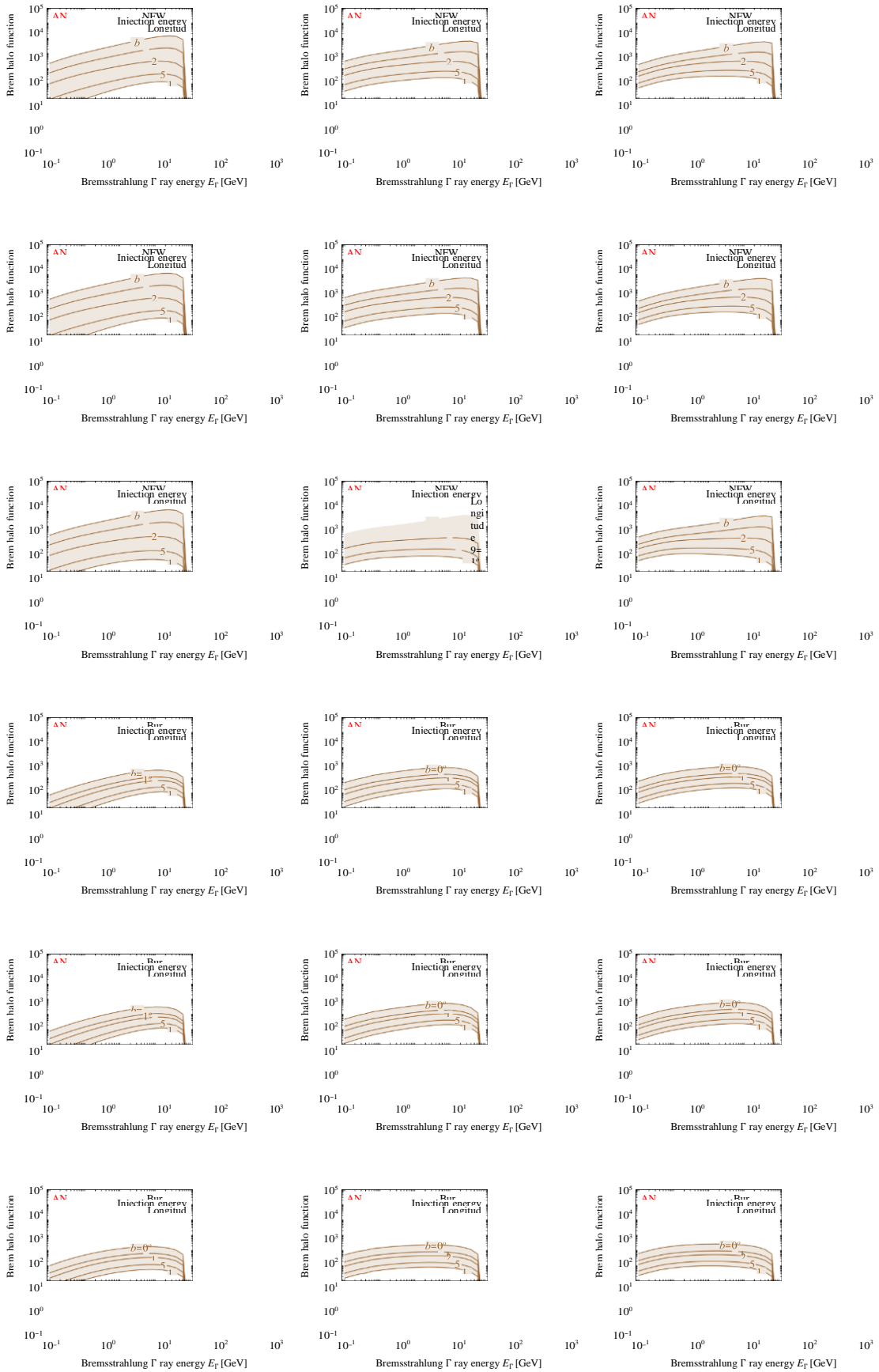
In the quest for the discovery of Dark Matter, it is important to exploit all possible strategies. In Indirect searches, in addition, it is important to be able to exploit the multi-messenger and multi-wavelength nature of the possible signals. We have here focussed on the secondary radiations from electrons and positrons and presented several upgraded and new results. The upgrades concern: i) an improved energy loss function (section 3.1) which fully includes low energy losses (Coulomb, ionization and bremsstrahlung) and ii) the revised halo functions for electrons and positrons (section 3.2). The new results consist in: iii) the synchrotron halo functions (section 3.3); iv) the bremsstrahlung halo functions (section 3.4). All the results are provided in numerical form on the `PPPC4DMID` website [65].

These state-of-the-art tools allow to compute the secondary radiation signal (synchrotron, bremsstrahlung and Inverse Compton) from any arbitrary DM weak-scale model and will be precious and hopefully instrumental in the current era of precision DM indirect searches.

Acknowledgments

We thank Céline Boehm, Alessandro Cuoco and Gabrijela Zaharijas for several valuable inputs, and we are in particular grateful to Paolo Panci for many useful discussions. We acknowledge the hospitality of the Institut d’Astrophysique de Paris, where part of this work was done.

Funding and research infrastructure acknowledgements:



.TTPADPN912N

Figure 9. Generalized bremsstrahlung halo functions, for the DM annihilation case. Analogously to figure 6, the upper 9 panels correspond to an NFW profile, the lower 9 to Burkert; the columns correspond to a fixed propagation model, the rows to a fixed magnetic field model.

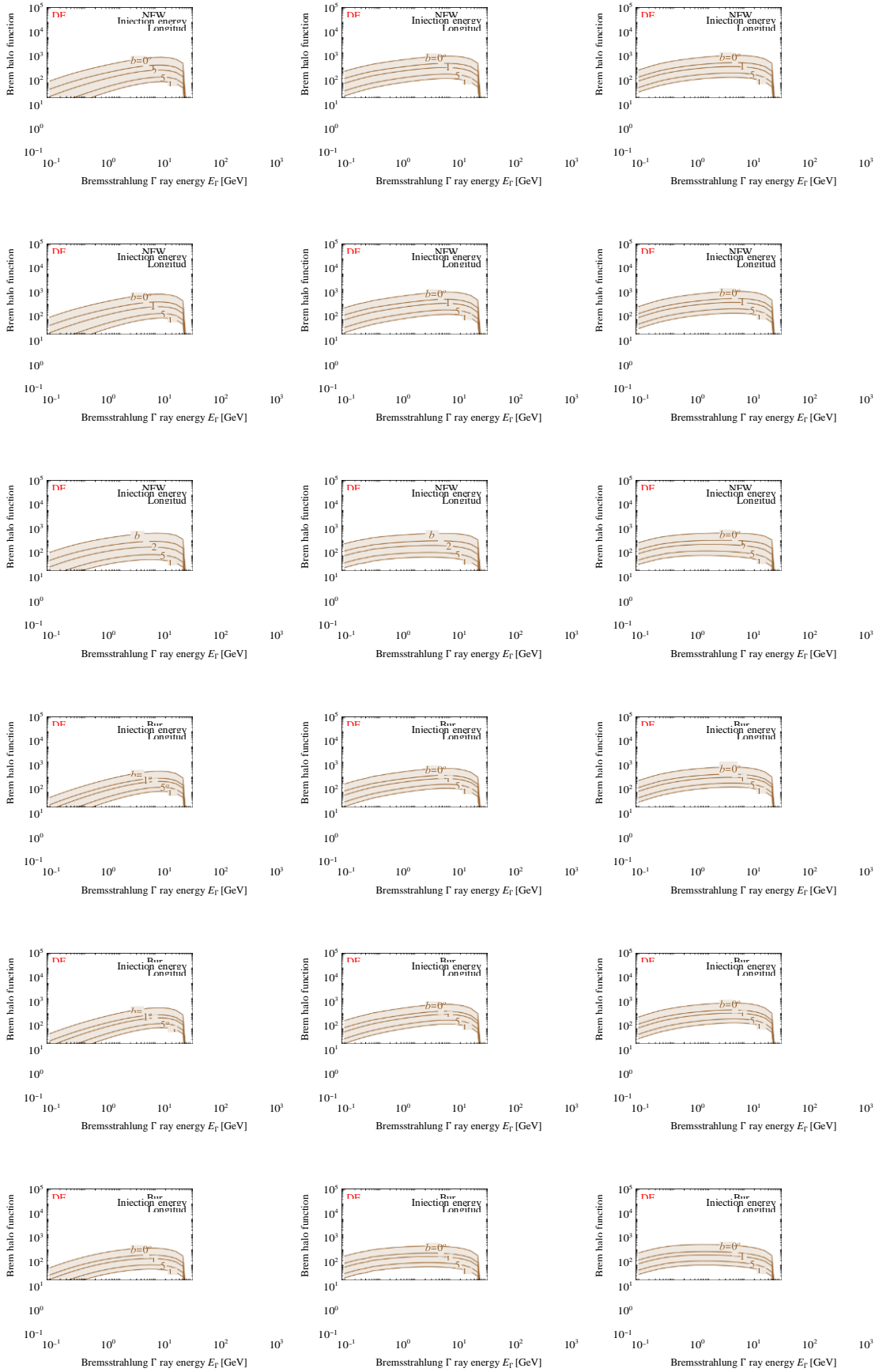


Figure 10. Generalized bremsstrahlung halo functions, for the DM decay case.

.TCAPN9 (2N

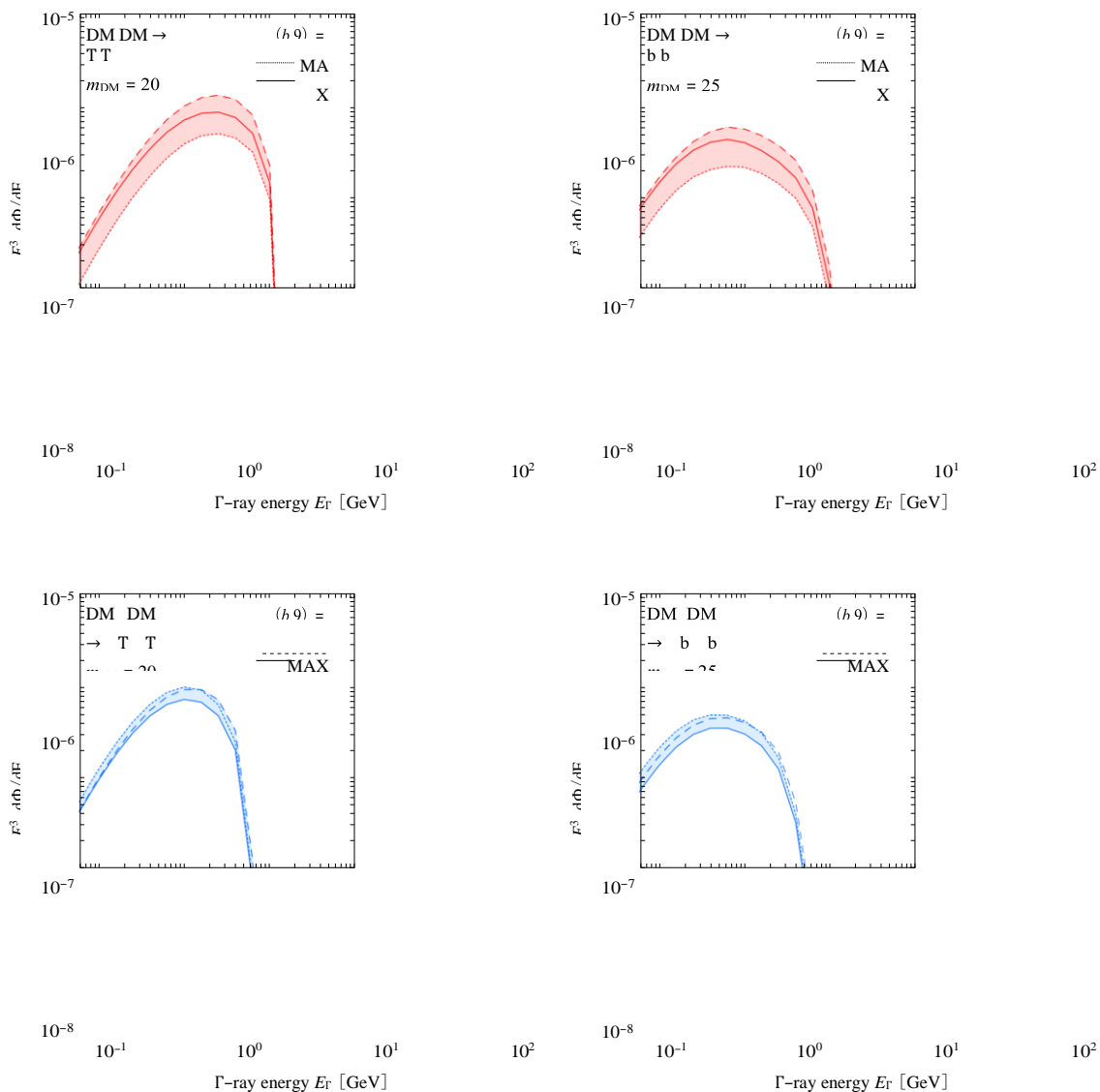


Figure 11. Bremsstrahlung γ -ray fluxes for the case of annihilations (top row) and decay (bottom row), shown for two different channels.

- * European Research Council (ERC) under the EU Seventh Framework Programme (FP7/2007-2013)/ERC Starting Grant (agreement n. 278234 — ‘NEWDARK’ project),
- * EU ITN network UNILHC [work of M.C.],
- * French national research agency ANR under contract ANR 2010 BLANC 041301.

References

- [1] R. Aloisio, P. Blasi and A.V. Olinto, *Neutralino annihilation at the Galactic Center revisited*, *JCAP* **05** (2004) 007 [[astro-ph/0402588](#)] [[INSPIRE](#)].
- [2] G. Bertone, E. Nezri, J. Orloff and J. Silk, *Neutrinos from dark matter annihilations at the Galactic Center*, *Phys. Rev. D* **70** (2004) 063503 [[astro-ph/0403322](#)] [[INSPIRE](#)].

- [3] M. Regis and P. Ullio, *Multi-wavelength signals of dark matter annihilations at the Galactic center*, *Phys. Rev. D* **78** (2008) 043505 [arXiv:0802.0234] [INSPIRE].
- [4] G. Bertone, M. Cirelli, A. Strumia and M. Taoso, *Gamma-ray and radio tests of the e^+e^- excess from DM annihilations*, *JCAP* **03** (2009) 009 [arXiv:0811.3744] [INSPIRE].
- [5] L. Bergstrom, G. Bertone, T. Bringmann, J. Edsjo and M. Taoso, *Gamma-ray and Radio Constraints of High Positron Rate Dark Matter Models Annihilating into New Light Particles*, *Phys. Rev. D* **79** (2009) 081303 [arXiv:0812.3895] [INSPIRE].
- [6] R.M. Crocker, N.F. Bell, C. Balázs and D.I. Jones, *Radio and gamma-ray constraints on dark matter annihilation in the Galactic center*, *Phys. Rev. D* **81** (2010) 063516 [arXiv:1002.0229] [INSPIRE].
- [7] C. Boehm, J. Silk and T. Ensslin, *Radio observations of the Galactic Centre and the Coma cluster as a probe of light dark matter self-annihilations and decay*, arXiv:1008.5175 [INSPIRE].
- [8] I. Cholis, D. Hooper and T. Linden, *A Critical Reevaluation of Radio Constraints on Annihilating Dark Matter*, *Phys. Rev. D* **91** (2015) 083507 [arXiv:1408.6224] [INSPIRE].
- [9] P. Blasi, A.V. Olinto and C. Tyler, *Detecting WIMPs in the microwave sky*, *Astropart. Phys.* **18** (2003) 649 [astro-ph/0202049] [INSPIRE].
- [10] N. Fornengo, R.A. Lineros, M. Regis and M. Taoso, *Galactic synchrotron emission from WIMPs at radio frequencies*, *JCAP* **01** (2012) 005 [arXiv:1110.4337] [INSPIRE].
- [11] E. Borriello, A. Cuoco and G. Miele, *Radio constraints on dark matter annihilation in the galactic halo and its substructures*, *Phys. Rev. D* **79** (2009) 023518 [arXiv:0809.2990] [INSPIRE].
- [12] E. Borriello, A. Cuoco and G. Miele, *Radio Signal by Galactic Dark Matter*, *Nucl. Phys. Proc. Suppl.* **190** (2009) 185 [arXiv:0812.2932] [INSPIRE].
- [13] T. Delahaye, C. Boehm and J. Silk, *Can Planck constrain indirect detection of dark matter in our galaxy?*, *Mon. Not. Roy. Astron. Soc.* **422** (2012) L16 [arXiv:1105.4689] [INSPIRE].
- [14] T. Linden, D. Hooper and F. Yusef-Zadeh, *Dark Matter and Synchrotron Emission from Galactic Center Radio Filaments*, *Astrophys. J.* **741** (2011) 95 [arXiv:1106.5493] [INSPIRE].
- [15] Y. Mambrini, M.H.G. Tytgat, G. Zaharijas and B. Zaldivar, *Complementarity of Galactic radio and collider data in constraining WIMP dark matter models*, *JCAP* **11** (2012) 038 [arXiv:1206.2352] [INSPIRE].
- [16] N. Fornengo, R. Lineros, M. Regis and M. Taoso, *Possibility of a Dark Matter Interpretation for the Excess in Isotropic Radio Emission Reported by ARCADE*, *Phys. Rev. Lett.* **107** (2011) 271302 [arXiv:1108.0569] [INSPIRE].
- [17] N. Fornengo, R. Lineros, M. Regis and M. Taoso, *Cosmological Radio Emission induced by WIMP Dark Matter*, *JCAP* **03** (2012) 033 [arXiv:1112.4517] [INSPIRE].
- [18] D. Hooper, A.V. Belikov, T.E. Jeltema, T. Linden, S. Profumo and T.R. Slatyer, *The Isotropic Radio Background and Annihilating Dark Matter*, *Phys. Rev. D* **86** (2012) 103003 [arXiv:1203.3547] [INSPIRE].
- [19] E. Carlson, D. Hooper, T. Linden and S. Profumo, *Testing the dark matter origin of the WMAP-Planck Haze with radio observations of Spiral Galaxies*, *JCAP* **07** (2013) 026 [arXiv:1212.5747] [INSPIRE].
- [20] M. Cirelli, P.D. Serpico and G. Zaharijas, *Bremsstrahlung gamma rays from light Dark Matter*, *JCAP* **11** (2013) 035 [arXiv:1307.7152] [INSPIRE].

- [21] K.N. Abazajian, N. Canac, S. Horiuchi and M. Kaplinghat, *Astrophysical and Dark Matter Interpretations of Extended Gamma-Ray Emission from the Galactic Center*, *Phys. Rev. D* **90** (2014) 023526 [arXiv:1402.4090] [INSPIRE].
- [22] T. Daylan et al., *The Characterization of the Gamma-Ray Signal from the Central Milky Way: A Compelling Case for Annihilating Dark Matter*, arXiv:1402.6703 [INSPIRE].
- [23] T. Lacroix, C. Boehm and J. Silk, *Fitting the Fermi-LAT GeV excess: On the importance of including the propagation of electrons from dark matter*, *Phys. Rev. D* **90** (2014) 043508 [arXiv:1403.1987] [INSPIRE].
- [24] M. Cirelli, D. Gaggero, G. Giesen, M. Taoso and A. Urbano, *Antiproton constraints on the GeV gamma-ray excess: a comprehensive analysis*, *JCAP* **12** (2014) 045 [arXiv:1407.2173] [INSPIRE].
- [25] K.N. Abazajian, N. Canac, S. Horiuchi, M. Kaplinghat and A. Kwa, *Discovery of a New Galactic Center Excess Consistent with Upscattered Starlight*, *JCAP* **07** (2015) 013 [arXiv:1410.6168] [INSPIRE].
- [26] D. Eichler and I. Maor, *Galactic positrons from localized sources*, astro-ph/0501096 [INSPIRE].
- [27] I. Cholis, G. Dobler, D.P. Finkbeiner, L. Goodenough and N. Weiner, *The Case for a 700+ GeV WIMP: Cosmic Ray Spectra from ATIC and PAMELA*, *Phys. Rev. D* **80** (2009) 123518 [arXiv:0811.3641] [INSPIRE].
- [28] J. Zhang et al., *Discriminating different scenarios to account for the cosmic e^\pm excess by synchrotron and inverse Compton radiation*, *Phys. Rev. D* **80** (2009) 023007 [arXiv:0812.0522] [INSPIRE].
- [29] E. Borriello, A. Cuoco and G. Miele, *Secondary radiation from the Pamela/ATIC excess and relevance for Fermi*, *Astrophys. J.* **699** (2009) L59 [arXiv:0903.1852] [INSPIRE].
- [30] V. Barger, Y. Gao, W.Y. Keung, D. Marfatia and G. Shaughnessy, *Dark matter and pulsar signals for Fermi LAT, PAMELA, ATIC, HESS and WMAP data*, *Phys. Lett. B* **678** (2009) 283 [arXiv:0904.2001] [INSPIRE].
- [31] M. Cirelli and P. Panci, *Inverse Compton constraints on the Dark Matter e^+e^- excesses*, *Nucl. Phys. B* **821** (2009) 399 [arXiv:0904.3830] [INSPIRE].
- [32] M. Cirelli et al., *PPPC 4 DM ID: A Poor Particle Physicist Cookbook for Dark Matter Indirect Detection*, *JCAP* **03** (2011) 051 [Erratum *ibid.* **1210** (2012) E01] [arXiv:1012.4515] [INSPIRE].
- [33] P. Baratella, M. Cirelli, A. Hektor, J. Pata, M. P. IIBeleht and A. Strumia, *PPPC 4 DMv: a Poor Particle Physicist Cookbook for Neutrinos from Dark Matter annihilations in the Sun*, *JCAP* **03** (2014) 053 [arXiv:1312.6408] [INSPIRE].
- [34] M. Cirelli, G. Giesen, M. Taoso et al., work in progress.
- [35] GALPROP's website galprop.stanford.edu.
- [36] C. Evoli, D. Gaggero, D. Grasso and L. Maccione, *Cosmic-Ray Nuclei, Antiprotons and Gamma-rays in the Galaxy: a New Diffusion Model*, *JCAP* **10** (2008) 018 [arXiv:0807.4730] [INSPIRE].
- [37] D. Gaggero, L. Maccione, G. Di Bernardo, C. Evoli and D. Grasso, *Three-Dimensional Model of Cosmic-Ray Lepton Propagation Reproduces Data from the Alpha Magnetic Spectrometer on the International Space Station*, *Phys. Rev. Lett.* **111** (2013) 021102 [arXiv:1304.6718] [INSPIRE].
- [38] DRAGON's website <http://www.dragonproject.org/Home.html>.
- [39] G. Ghisellini, P. W. Guilbert and R. Svensson, *The synchrotron boiler*, *Astrophys. J.* **334** (1988) L5.
- [40] R. Beck, *Cosmic Magnetic Fields: Observations and Prospects*, *AIP Conf. Proc.* **1381** (2011) 117 [arXiv:1104.3749] [INSPIRE].

- [41] R. Jansson, G.R. Farrar, A.H. Waelkens and T.A. Ensslin, *Constraining models of the large scale Galactic magnetic field with WMAP5 polarization data and extragalactic Rotation Measure sources*, *JCAP* **07** (2009) 021 [arXiv:0905.2228] [INSPIRE].
- [42] M.S. Pshirkov, P.G. Tinyakov, P.P. Kronberg and K.J. Newton-McGee, *Deriving global structure of the Galactic Magnetic Field from Faraday Rotation Measures of extragalactic sources*, *Astrophys. J.* **738** (2011) 192 [arXiv:1103.0814] [INSPIRE].
- [43] R. Beck and R. Wielebinski, *Magnetic fields in galaxies*, in *Planets, Stars and Stellar Systems. Vol. 5: Galactic Structure and Stellar Populations*, T.D. Oswalt and G. Gilmore eds., Springer, Berlin Germany (2013) [arXiv:1302.5663] [INSPIRE].
- [44] X.H. Sun, W. Reich, A. Waelkens and T. Enßlin, *Radio observational constraints on Galactic 3D-emission models*, *Astron. Astrophys.* **477** (2008) 573 [arXiv:0711.1572] [INSPIRE].
- [45] R. Jansson and G.R. Farrar, *The Galactic Magnetic Field*, *Astrophys. J.* **761** (2012) L11 [arXiv:1210.7820] [INSPIRE].
- [46] R. Jansson and G.R. Farrar, *A New Model of the Galactic Magnetic Field*, *Astrophys. J.* **757** (2012) 14 [arXiv:1204.3662] [INSPIRE].
- [47] X. Sun and W. Reich, *The Galactic halo magnetic field revisited*, *Res. Astron. Astrophys.* **10** (2010) 1287 [arXiv:1010.4394] [INSPIRE].
- [48] R. Beck, *Galactic and Extragalactic Magnetic Fields*, *AIP Conf. Proc.* **1085** (2009) 83 [arXiv:0810.2923] [INSPIRE].
- [49] A.W. Strong, I.V. Moskalenko and O. Reimer, *Diffuse continuum gamma-rays from the galaxy*, *Astrophys. J.* **537** (2000) 763 [Erratum *ibid.* **541** (2000) 1109] [astro-ph/9811296] [INSPIRE].
- [50] J.L. Han, R.N. Manchester, A.G. Lyne, G.J. Qiao and W. van Straten, *Pulsar rotation measures and the large-scale structure of Galactic magnetic field*, *Astrophys. J.* **642** (2006) 868 [astro-ph/0601357] [INSPIRE].
- [51] A.W. Strong and I.V. Moskalenko, *Propagation of cosmic-ray nucleons in the galaxy*, *Astrophys. J.* **509** (1998) 212 [astro-ph/9807150] [INSPIRE].
- [52] I.V. Moskalenko and A.W. Strong, *Production and propagation of cosmic ray positrons and electrons*, *Astrophys. J.* **493** (1998) 694 [astro-ph/9710124] [INSPIRE].
- [53] A.W. Strong, E. Orlando and T.R. Jaffe, *The interstellar cosmic-ray electron spectrum from synchrotron radiation and direct measurements*, *Astron. Astrophys.* **534** (2011) A54 [arXiv:1108.4822] [INSPIRE].
- [54] G. Di Bernardo, C. Evoli, D. Gaggero, D. Grasso and L. Maccione, *Cosmic Ray Electrons, Positrons and the Synchrotron emission of the Galaxy: consistent analysis and implications*, *JCAP* **03** (2013) 036 [arXiv:1210.4546] [INSPIRE].
- [55] T. Bringmann, F. Donato and R.A. Lineros, *Radio data and synchrotron emission in consistent cosmic ray models*, *JCAP* **01** (2012) 049 [arXiv:1106.4821] [INSPIRE].
- [56] E. Orlando and A. Strong, *Galactic synchrotron emission with cosmic ray propagation models*, arXiv:1309.2947 [INSPIRE].
- [57] N. Fornengo, R.A. Lineros, M. Regis and M. Taoso, *The isotropic radio background revisited*, *JCAP* **04** (2014) 008 [arXiv:1402.2218] [INSPIRE].
- [58] M. Di Mauro, F. Donato, N. Fornengo, R. Lineros and A. Vittino, *Interpretation of AMS-02 electrons and positrons data*, *JCAP* **04** (2014) 006 [arXiv:1402.0321] [INSPIRE].
- [59] J. Laval, D. Maurin and A. Putze, *Direct constraints on diffusion models from cosmic-ray positron data: Excluding the minimal model for dark matter searches*, *Phys. Rev. D* **90** (2014) 081301 [arXiv:1407.2540] [INSPIRE].

- [60] FERMI-LAT collaboration, *Fermi-LAT Observations of the Diffuse γ -Ray Emission: Implications for Cosmic Rays and the Interstellar Medium*, *Astrophys. J.* **750** (2012) 3 [[arXiv:1202.4039](#)] [[INSPIRE](#)].
- [61] G. Giesen et al., *AMS-02 antiprotons, at last! Secondary astrophysical component and immediate implications for Dark Matter*, [arXiv:1504.04276](#) [[INSPIRE](#)].
- [62] A.E. Vladimirov et al., *GALPROP WebRun: an internet-based service for calculating galactic cosmic ray propagation and associated photon emissions*, *Comput. Phys. Commun.* **182** (2011) 1156 [[arXiv:1008.3642](#)] [[INSPIRE](#)].
- [63] T.A. Porter, I.V. Moskalenko, A.W. Strong, E. Orlando and L. Bouchet, *Inverse Compton Origin of the Hard X-Ray and Soft Gamma-Ray Emission from the Galactic Ridge*, *Astrophys. J.* **682** (2008) 400 [[arXiv:0804.1774](#)] [[INSPIRE](#)].
- [64] I.V. Moskalenko, A.W. Strong, J.F. Ormes and M.S. Potgieter, *Secondary anti-protons and propagation of cosmic rays in the galaxy and heliosphere*, *Astrophys. J.* **565** (2002) 280 [[astro-ph/0106567](#)] [[INSPIRE](#)].
- [65] www.marcocirelli.net/PPPC4DMID.html.
- [66] G.R. Blumenthal and R.J. Gould, *Bremsstrahlung, synchrotron radiation and compton scattering of high-energy electrons traversing dilute gases*, *Rev. Mod. Phys.* **42** (1970) 237 [[INSPIRE](#)].
- [67] R. Schlickeiser, *Cosmic ray astrophysics*, Springer, Berlin Germany (2002).
- [68] C. Evoli, D. Gaggero, D. Grasso and L. Maccione, *A common solution to the cosmic ray anisotropy and gradient problems*, *Phys. Rev. Lett.* **108** (2012) 211102 [[arXiv:1203.0570](#)] [[INSPIRE](#)].
- [69] FERMI-LAT collaboration, *Fermi-LAT Observations of the Diffuse Gamma-Ray Emission: Implications for Cosmic Rays and the Interstellar Medium*, *Astrophys. J.* **750** (2012) 3 [[arXiv:1202.4039](#)] [[INSPIRE](#)].