



**HAL**  
open science

## The *Ectocarpus* genome and the independent evolution of multicellularity in brown algae

J. Mark Cock, Lieven Sterck, Pierre Rouzé, Delphine Scornet, Andrew E. Allen, Grigoris Amoutzias, Véronique Anthouard, François Artiguenave, Jean-Marc Aury, Jonathan H Badger, et al.

### ► To cite this version:

J. Mark Cock, Lieven Sterck, Pierre Rouzé, Delphine Scornet, Andrew E. Allen, et al.. The *Ectocarpus* genome and the independent evolution of multicellularity in brown algae. *Nature*, 2010, 465 (7298), pp.617-621. 10.1038/nature09016 . cea-00906990

**HAL Id: cea-00906990**

**<https://cea.hal.science/cea-00906990v1>**

Submitted on 15 Oct 2019

**HAL** is a multi-disciplinary open access archive for the deposit and dissemination of scientific research documents, whether they are published or not. The documents may come from teaching and research institutions in France or abroad, or from public or private research centers.

L'archive ouverte pluridisciplinaire **HAL**, est destinée au dépôt et à la diffusion de documents scientifiques de niveau recherche, publiés ou non, émanant des établissements d'enseignement et de recherche français ou étrangers, des laboratoires publics ou privés.



Distributed under a Creative Commons Attribution - NonCommercial - ShareAlike 4.0 International License



# Newcastle University ePrints

Cock JM, Sterck L, Rouzé P, et al.

[The \*Ectocarpus\* genome and the independent evolution of multicellularity in brown algae.](#)

*Nature* 2010, 465(7298), 617-621.

## Copyright:

This work is licensed under a Creative Commons Attribution-NonCommercial-ShareAlike 3.0 Unported License. To view a copy of this license, visit <http://creativecommons.org/licenses/by-nc-sa/3.0/>

Link for published article:

<http://dx.doi.org/10.1038/nature09016>

**Date deposited:** 25<sup>th</sup> November 2013



ePrints – Newcastle University ePrints

<http://eprint.ncl.ac.uk>

# The *Ectocarpus* genome and the independent evolution of multicellularity in brown algae

J. Mark Cock<sup>1,2</sup>, Lieven Sterck<sup>3,4</sup>, Pierre Rouzé<sup>3,4</sup>, Delphine Scornet<sup>1,2</sup>, Andrew E. Allen<sup>5</sup>, Grigoris Amoutzias<sup>3,4</sup>, Veronique Anthonard<sup>6</sup>, François Artiguenave<sup>6</sup>, Jean-Marc Aury<sup>6</sup>, Jonathan H. Badger<sup>5</sup>, Bank Beszteri<sup>7</sup>†, Kenny Billiau<sup>3,4</sup>, Eric Bonnet<sup>3,4</sup>, John H. Bothwell<sup>8,9,10</sup>, Chris Bowler<sup>11,12</sup>, Catherine Boyen<sup>1,2</sup>, Colin Brownlee<sup>10</sup>, Carl J. Carrano<sup>13</sup>, Bénédicte Charrier<sup>1,2</sup>, Ga Youn Cho<sup>1,2</sup>, Susana M. Coelho<sup>1,2</sup>, Jonas Collén<sup>1,2</sup>, Erwan Corre<sup>14</sup>, Corinne Da Silva<sup>6</sup>, Ludovic Delage<sup>1,2</sup>, Nicolas Delaroque<sup>15</sup>, Simon M. Dittami<sup>1,2</sup>, Sylvie Doubeau<sup>16</sup>, Marek Elias<sup>17</sup>, Garry Farnham<sup>10</sup>, Claire M. M. Gachon<sup>18</sup>, Bernhard Gschloessl<sup>1,2</sup>, Svenja Heesch<sup>1,2</sup>, Kamel Jabbari<sup>6,11</sup>, Claire Jubin<sup>6</sup>, Hiroshi Kawai<sup>19</sup>, Kei Kimura<sup>20</sup>, Bernard Kloareg<sup>1,2</sup>, Frithjof C. Küpper<sup>18</sup>, Daniel Lang<sup>21</sup>, Aude Le Bail<sup>1,2</sup>, Catherine Leblanc<sup>1,2</sup>, Patrice Lerouge<sup>22</sup>, Martin Lohr<sup>23</sup>, Pascal J. Lopez<sup>11</sup>, Cindy Martens<sup>3,4</sup>, Florian Maumus<sup>11</sup>, Gurvan Michel<sup>1,2</sup>, Diego Miranda-Saavedra<sup>24</sup>†, Julia Morales<sup>25,26</sup>, Hervé Moreau<sup>27</sup>, Taizo Motomura<sup>20</sup>, Chikako Nagasato<sup>20</sup>, Carolyn A. Napoli<sup>28</sup>, David R. Nelson<sup>29</sup>, Pi Nyvall-Collén<sup>1,2</sup>, Akira F. Peters<sup>1,2</sup>†, Cyril Pommier<sup>30</sup>, Philippe Potin<sup>1,2</sup>, Julie Poulain<sup>6</sup>, Hadi Quesneville<sup>30</sup>, Betsy Read<sup>31</sup>, Stefan A. Rensing<sup>21</sup>, Andrés Ritter<sup>1,2,32</sup>, Sylvie Rousvoal<sup>1,2</sup>, Manoj Samanta<sup>33</sup>, Gaëlle Samson<sup>6</sup>, Declan C. Schroeder<sup>10</sup>, Béatrice Ségurens<sup>6</sup>, Martina Strittmatter<sup>18</sup>, Thierry Tonon<sup>1,2</sup>, James W. Tregear<sup>16</sup>, Klaus Valentin<sup>7</sup>, Peter von Dassow<sup>34</sup>, Takahiro Yamagishi<sup>19</sup>, Yves Van de Peer<sup>3,4</sup> & Patrick Wincker<sup>6</sup>

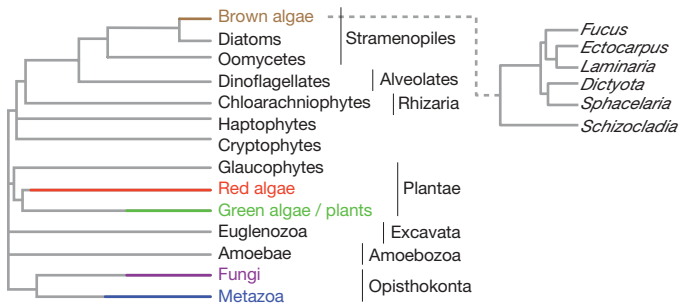
Brown algae (Phaeophyceae) are complex photosynthetic organisms with a very different evolutionary history to green plants, to which they are only distantly related<sup>1</sup>. These seaweeds are the dominant species in rocky coastal ecosystems and they exhibit many interesting adaptations to these, often harsh, environments. Brown algae are also one of only a small number of eukaryotic lineages that have evolved complex multicellularity (Fig. 1). We report the 214 million base pair (Mbp) genome sequence of the filamentous seaweed *Ectocarpus siliculosus* (Dillwyn) Lyngbye, a model organism for brown algae<sup>2–5</sup>, closely related to the kelps<sup>6,7</sup> (Fig. 1). Genome features such as the presence of an extended set of light-harvesting and pigment biosynthesis genes and new metabolic processes such as halide metabolism help explain the ability of this organism to cope with the highly variable tidal environment. The evolution of multicellularity in this lineage is correlated with the presence of a rich array of signal transduction genes. Of particular interest is the

presence of a family of receptor kinases, as the independent evolution of related molecules has been linked with the emergence of multicellularity in both the animal and green plant lineages. The *Ectocarpus* genome sequence represents an important step towards developing this organism as a model species, providing the possibility to combine genomic and genetic<sup>2</sup> approaches to explore these and other<sup>4,5</sup> aspects of brown algal biology further.

The 16,256 protein coding genes present in the 214 Mbp haploid male genome of *E. siliculosus* are rich in introns (seven per gene on average), have long 3' untranslated regions (average size: 845 bp) and are often located very close to each other on the chromosome (29% of the intergenic regions between divergently transcribed genes are less than 400 bp long; Table 1 and Supplementary Information 2.1).

Repeated sequences, including DNA transposons, retrotransposons and helitrons, make up 22.7% of the *Ectocarpus* genome. Small RNAs mapped preferentially to transposons, indicating that they have a role

<sup>1</sup>UPMC Université Paris 6, The Marine Plants and Biomolecules Laboratory, UMR 7139, Station Biologique de Roscoff, Place Georges Teissier, BP74, 29682 Roscoff Cedex, France. <sup>2</sup>CNRS, UMR 7139, Laboratoire International Associé Dispersal and Adaptation in Marine Species, Station Biologique de Roscoff, Place Georges Teissier, BP74, 29682 Roscoff Cedex, France. <sup>3</sup>Department of Plant Systems Biology, VIB, B-9052 Ghent, Belgium. <sup>4</sup>Department of Plant Biotechnology and Genetics, Ghent University, B-9052 Ghent, Belgium. <sup>5</sup>J. Craig Venter Institute, San Diego, California 92121, USA. <sup>6</sup>CEA, DSV, Institut de Génétique, Génomique, Génomique, 2 rue Gaston Crémieux, CP5706, 91057 Evry, France. <sup>7</sup>Alfred Wegener Institute for Polar and Marine Research, Am Handelshafen 12, 27570 Bremerhaven, Germany. <sup>8</sup>Queen's University Belfast, School of Biological Sciences, 97 Lisburn Road, Belfast, BT9 7BL, UK. <sup>9</sup>Queen's University Marine Laboratory, Portaferry, Co. Down, BT22 1PF, UK. <sup>10</sup>Marine Biological Association of the UK, The Laboratory, Citadel Hill, Plymouth, PL1 2PB, UK. <sup>11</sup>Institut de Biologie de l'Ecole Normale Supérieure (IBENS), Centre National de la Recherche Scientifique UMR8197, Ecole Normale Supérieure, 75005 Paris, France. <sup>12</sup>Stazione Zoologica, Villa Comunale, I 80121 Naples, Italy. <sup>13</sup>San Diego State University, 5500 Campanile Drive, San Diego, California 92182-1030, USA. <sup>14</sup>Computer and Genomics Resource Centre, FR 2424, Station Biologique de Roscoff, Place Georges Teissier, BP74, 29682 Roscoff Cedex, France. <sup>15</sup>Fraunhofer Institute for Cell Therapy and Immunology IZI, Perlickstrasse 1, 04103 Leipzig, Germany. <sup>16</sup>IRD, IRD/CIRAD Palm Developmental Biology Group, UMR 1097 DIAPC, 911 avenue Agropolis, 34394 Montpellier, France. <sup>17</sup>Charles University in Prague, Faculty of Science, Department of Botany and Department of Parasitology, Benatska 2, 128 01 Prague 2, Czech Republic. <sup>18</sup>Scottish Association for Marine Science, Department of Microbial and Molecular Biology, Scottish Marine Institute, Oban, Argyll PA37 1QA, UK. <sup>19</sup>Kobe University Research Center for Inland Seas, 1-1, Rokkodai, Nada, Kobe 657-8501, Japan. <sup>20</sup>Muroran Marine Station, Field Science Center for Northern Biosphere, Hokkaido University, Muroran 051-0003, Hokkaido, Japan. <sup>21</sup>University of Freiburg, Faculty of Biology, Hauptstr. 1, 79104 Freiburg, Germany. <sup>22</sup>Laboratoire Glyco-MEV EA 4358, IFRMP 23, Université de Rouen, 76821 Mont-Saint-Aignan, France. <sup>23</sup>Institut für Allgemeine Botanik, Johannes Gutenberg-Universität Mainz, 55099 Mainz, Germany. <sup>24</sup>Department of Haematology, Cambridge Institute for Medical Research, University of Cambridge, Hills Road, Cambridge CB2 0XY, UK. <sup>25</sup>UPMC Université Paris 6, UMR 7150 Mer & Santé, Equipe Traduction Cycle Cellulaire et Développement, Station Biologique de Roscoff, 29680 Roscoff, France. <sup>26</sup>CNRS, UMR 7150 Mer & Santé, Station Biologique de Roscoff, 29680 Roscoff, France. <sup>27</sup>Laboratoire ARAGO, BP44, 66651 Banyuls-sur-mer, France. <sup>28</sup>Bio5 Institute and Department of Plant Sciences, University of Arizona, Tucson, Arizona 85719, USA. <sup>29</sup>University of Tennessee Health Science Center, Department of Molecular Sciences, 858 Madison Ave, Suite G01, Memphis, Tennessee 38163, USA. <sup>30</sup>Unité de Recherches en Génomique-Info (UR INRA 1164), INRA, Centre de recherche de Versailles, bat.18, RD10, Route de Saint Cyr, 78026 Versailles Cedex, France. <sup>31</sup>Biological Sciences, Cal State University, San Marcos, California 92096-0001, USA. <sup>32</sup>Departament de Ecologia, Center for Advanced Studies in Ecology and Biodiversity, Facultad de Ciencias Biológicas, Pontificia Universidad Católica de Chile, Santiago, Chile. <sup>33</sup>Systemix Institute, Redmond, Washington 98053, USA. <sup>34</sup>CNRS, UMR 7144, Evolution du Plancton et Paleocéans, Station Biologique de Roscoff, Place Georges Teissier, BP74, 29682 Roscoff Cedex, France. †Present addresses: Department of Microbiology, Oregon State University, Corvallis, Oregon 97331, USA (B.B.); WPI Immunology Frontier Research Center, Osaka University, 3-1 Yamadaoka, Suita, 565-0871, Osaka, Japan (D.M.-S.); Bezhin Rosko, 28 route de Perharidy, 29680 Roscoff, France (A.F.P.).



**Figure 1 | Simplified representation of the evolutionary tree of the eukaryotes showing the five major groups that have evolved complex multicellularity (indicated in colour).** Here we define groups showing complex multicellularity as those that include macroscopic organisms with defined, recognizable morphologies and composed of multiple cell types. Coloured bars indicate the approximate, relative times of emergence of complex multicellularity in each lineage. The inset tree to the right indicates the relationship of *Ectocarpus* to selected brown algal genera. Kelps are represented in the tree by the genus *Laminaria*.

in silencing these elements despite the absence of detectable levels of cytosine methylation in the genome (Supplementary Information 2.1). Sequencing also revealed the presence of an integrated copy of a large DNA virus, closely related to the *Ectocarpus* phaeovirus EsV-1 (ref. 8; Fig. 2a). Approximately 50% of individuals in natural *Ectocarpus* populations show symptoms of viral infection<sup>9,10</sup> but the sequenced *Ectocarpus* strain Ec 32 has never been observed to produce virus particles and expression analysis showed that almost all of the viral genes were silent (Fig. 2b and Supplementary Information 2.1.17).

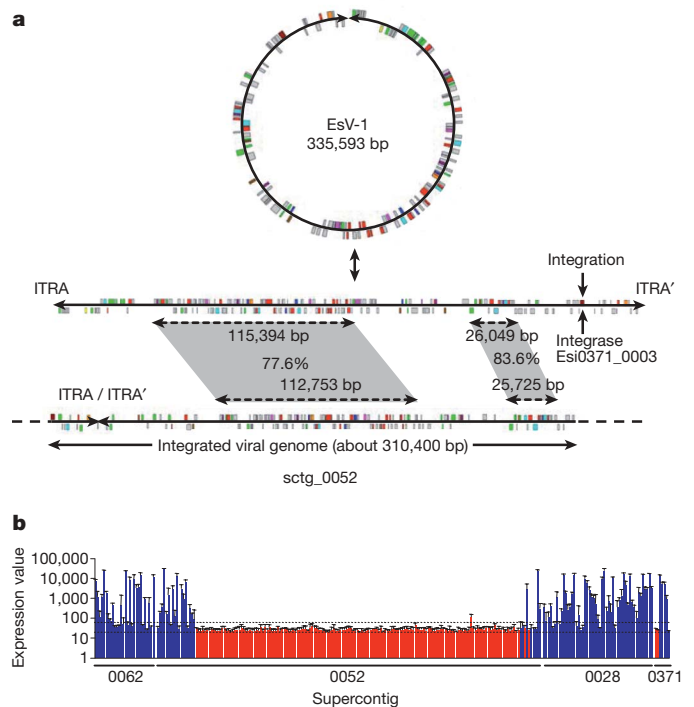
The shallow waters of the intertidal region are an attractive habitat for marine, sedentary, photosynthetic organisms providing them with both a substratum and access to light. However, the shoreline is also a hostile environment necessitating an ability to cope with tidal changes in light intensity, temperature, salinity and wave action, and with the biotic stresses characteristic of dense coastal ecosystems. Several features of the *Ectocarpus* genome indicate that this alga has evolved effective mechanisms for survival in this environment (Supplementary Information 2.2). For example, there is a large family of light harvesting complex (LHC) genes in *Ectocarpus* (53 loci, although some are probably pseudogenes), including a cluster of 11 genes with highest similarity to the LI818 family of light-stress related LHCs. The *Ectocarpus* genome is also predicted to encode a light-independent protochlorophyllid reductase (DPOR), allowing efficient synthesis of chlorophyll under dim light (Supplementary Information 2.2.2 and 2.2.3). Together these data indicate that *Ectocarpus* has a complex photosynthetic system that should enable

**Table 1 | *Ectocarpus* genome statistics**

Size of the sequenced genome (Mbp)	195.8
Number of supercontigs (scaffolds) over 2 kbp	1,561
Supercontig (scaffold) N50 (bp)	504,428
Number of contigs	14,043
Contig N50 (bp)	32,862
Percentage of the 91,041 cDNA sequences that match the genome	97.4%
Genomic G+C content (%)	53.6%
Percentage of repeated sequences	22.7%
Number of genes	16,256
Average gene length (bp)	6,859
Average coding sequence length (bp)	1,563
Number of introns	113,619
Average intron length (bp)	703.8
Average number of introns per gene	6.98
Number of exons	129,875
Average exon length (bp)	242.2
Number of single exon genes	856
Number of genes with protein similarity support (Blast e-value cutoff $< e^{-10}$ )	10,278 (63.2%)
Number of genes with expressed sequence tag support	9,601 (59%)
Number of genes with tiling array support	6,474 (40%)

it to adapt to an environment with highly variable light conditions. The high levels of phenolic compounds in brown algae are thought to protect against ultraviolet radiation, in a manner analogous to flavonoids in terrestrial plants<sup>11</sup>. Homologues of most of the terrestrial plant flavonoid pathway genes were found in *Ectocarpus* but these are completely absent from diatom or green algal genomes (Supplementary Information 2.2.9). The diverse complement of enzymes involved in the metabolism of reactive oxygen species (Supplementary Information 2.2.11) is also likely to represent an important adaptation to osmotic and light stresses.

In the Laminariales, the high concentration of apoplasmic iodide is thought to be used in a new anti-oxidant system that, through the emission of iodine, has an impact on atmospheric chemistry<sup>12</sup>. *Ectocarpus* also accumulates halides, although to a significantly lower level than in kelps (Supplementary Information 2.2.10). This difference was reflected in the genome; only one vanadium-dependent bromoperoxidase was found in contrast to the large families of halo-peroxidases in *Laminaria digitata*<sup>13</sup>. The *Ectocarpus* genome does, however, encode 21 putative dehalogenases and two haloalkane dehalogenases. These enzymes may serve to protect *Ectocarpus*



**Figure 2 | An integrated viral sequence in the *Ectocarpus* genome.**

**a**, Representation of the linear and circular forms of the EsV-1 genome compared to the inserted viral genome. Genes on the upper and lower strands are above and below the line, respectively. A short region of the viral genome containing the putative integrase gene has been transposed to supercontig 0371. Gray parallelograms connect regions of high gene density that are also found in other phaeoviruses. These regions contain many of the genes that are thought to be important for the viral life cycle. Percent nucleotide identities between cognate regions in EsV-1 and in the integrated viral genome are indicated. Dashed line, algal DNA. ITRA and ITRA', inverted terminal repeats. **b**, Mean expression levels of the inserted viral genes: the graph shows the mean of the normalized expression values (4 replicates)  $\pm$  s.d. of the genes that were included in the microarray experiments carried out in ref. 29. Expression data are shown for the control condition, but gene expression profiles were highly similar under stress conditions (not shown). Each bar represents the expression value for one coding sequence, the bars are in the same order as the corresponding genes along the supercontigs. Red bars correspond to virus genes, blue bars to host genes. Supercontigs 0062, 0052 and 0028 are adjacent on the genetic map, supercontig 0371 is part of another linkage group. The hybridization signals for 95% of the negative controls (median of four random probes on the same array) were between 19 and 59 (indicated by the two dotted lines).

against halogenated compounds produced by kelps as defence molecules<sup>12</sup>, allowing it to grow epiphytically on these organisms<sup>14,15</sup>.

The cell walls of brown algae contain unusual polysaccharides such as alginates and fucans<sup>16</sup>, with properties that are important both in terms of resistance to mechanical stresses and as protection from predators. Analysis of the *Ectocarpus* genome failed to detect homologues of many of the enzymes that are known, from other organisms, to have roles in alginate biosynthesis and in the remodelling of alginates, fucans and cellulose, indicating that brown algae have independently evolved enzymes to carry out many of these processes. However, a number of polysaccharide modifying enzymes, such as mannuronan C5 epimerases, sulphotransferases and sulphatases, were identified. These enzymes are likely to modulate physicochemical properties of the cell wall, influencing rigidity, ion exchange<sup>16</sup> and resistance to abiotic stress.

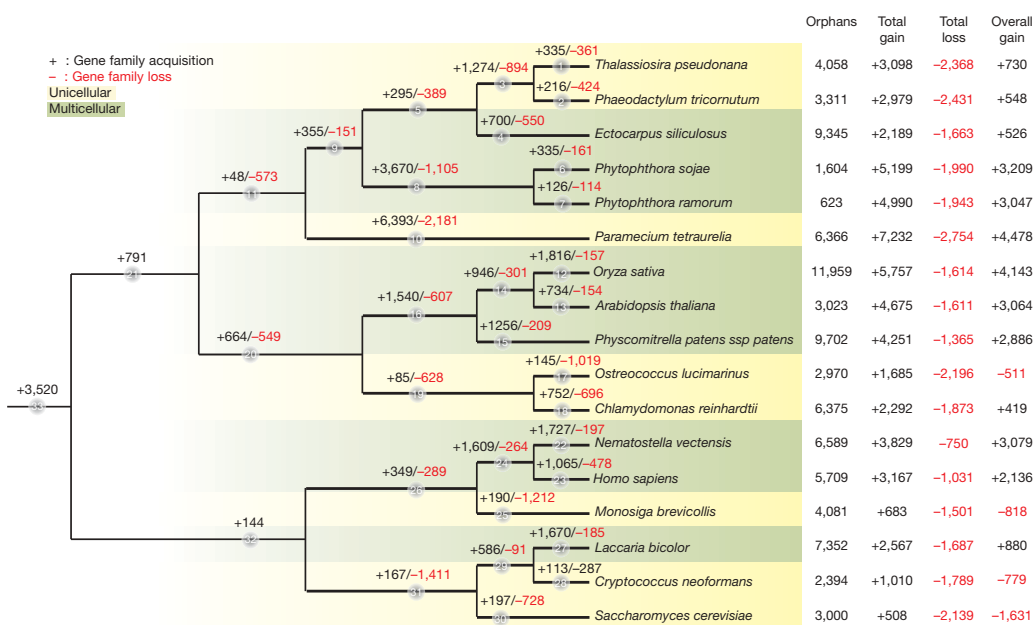
Comparison of genomes from a broad range of organisms (Fig. 3) indicated that the major eukaryotic groups have retained distinct but overlapping sets of genes since their evolution from a common ancestor, with new gene families evolving independently in each lineage. On average, lineages that have given rise to multicellular organisms have lost fewer gene families and evolved more new gene families than unicellular lineages. However, we were not able to detect any significant, common trends, such as a tendency for the multicellular lineages to gain families belonging to particular functional (gene ontology) groups.

Analysis of the gene families that are predicted to have been gained by the *Ectocarpus* genome since divergence from the unicellular diatoms indicated a significant gain in ontology terms associated with protein kinase activities, and these genes include a particularly interesting family of membrane-spanning receptor kinases. Receptor kinases have been shown to have key roles in developmental processes such as differentiation and cellular patterning in both the animal and green plant lineages<sup>17</sup>. Animal tyrosine and green plant serine/threonine receptor kinases form two separate monophyletic clades, indicating that these two families evolved independently, and in both lineages the emergence of receptor kinases is thought to have been a key event in the evolution of multicellularity<sup>18,19</sup>. The *Ectocarpus* receptor kinases also form a monophyletic clade, discrete from those of animal and green plant receptor kinases, indicating that the brown algal family also evolved

independently (Fig. 4). The evolution of membrane-spanning receptor kinases may, therefore, have been a key step in the evolution of complex multicellularity in at least three of the five groups that have attained this level of developmental sophistication. No orthologues of the *Ectocarpus* receptor kinase family were found in other stramenopile genomes, but a detailed analysis of two complete oomycete genome sequences identified a phylogenetically distinct family of receptor kinases (Fig. 4).

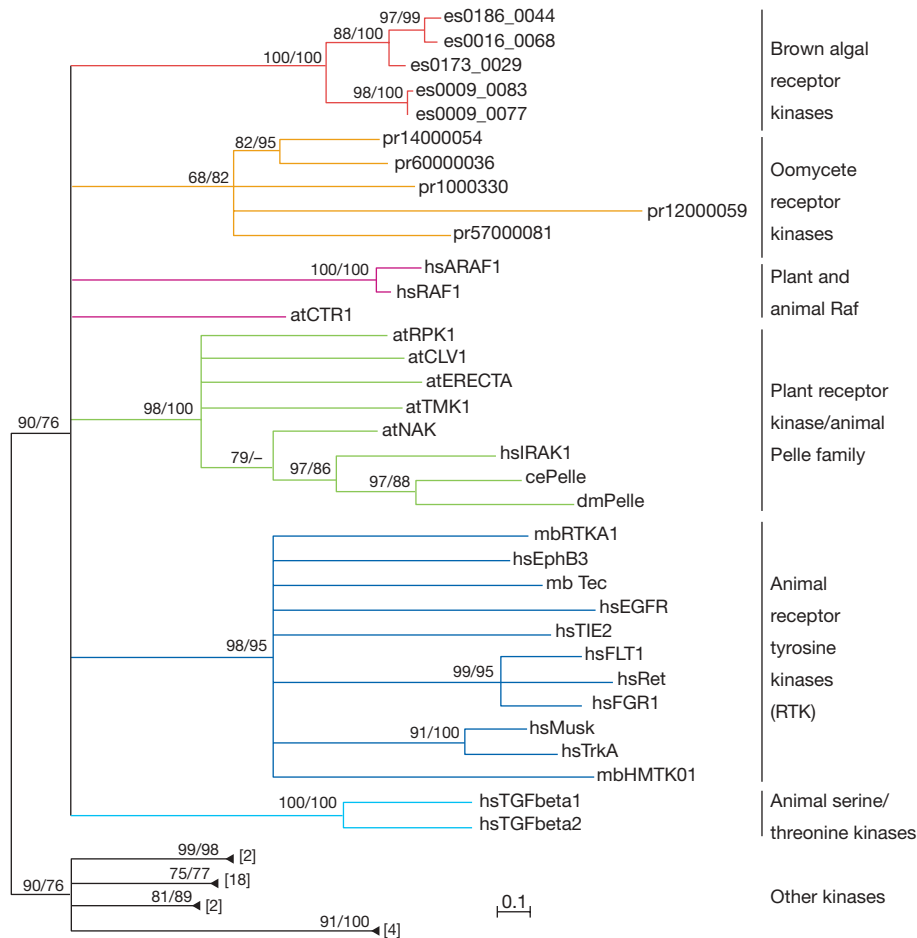
The *Ectocarpus* genome contains a number of other genes that could have potentially had important roles in the development of multicellularity (see Supplementary Information 2.3; although it should be noted that the functions of these proteins will need to be confirmed experimentally). For example there are several additional membrane-localized proteins of interest, including three integrin-related proteins. Integrins have an important role in cell adhesion in animals<sup>20</sup> but integrin genes are absent from all the previously sequenced stramenopile genomes. The *Ectocarpus* genome also encodes a large number of ion channels, compared to other stramenopile genomes. These include several channels that are likely to be involved in calcium signalling such as an inositol triphosphate/ryanodine type receptor (IP3R/RyR), four 4-domain voltage-gated calcium channels, and an expanded family of 18 transient receptor potential channels. Members of all these classes are found in animal genomes but are absent from the genomes of land plants<sup>21,22</sup>. No IP3R genes have been identified in the sequenced diatom and oomycete genomes, but the presence of an IP3R in *Ectocarpus* is consistent with the demonstration of ‘animal-like’ fast calcium waves and inositol-phosphate-induced calcium release in embryos of the brown alga *Fucus serratus*<sup>23,24</sup>.

The ion channels in the *Ectocarpus* genome illustrate how the evolutionary fates of eukaryotic lineages have probably depended not only on the evolution of new gene functions but also on the retention of genes already present in ancestral genomes. Along similar lines, there is evidence that, compared to unicellular organisms, multicellular organisms have tended to retain a more complete Rad51 family, which encodes DNA repair proteins including members with important roles during meiosis<sup>25</sup>. This is also the case in the stramenopiles, where *Ectocarpus* has a markedly more complete Rad51 gene family than the other sequenced members of the group (Supplementary Information 2.3.12). *Ectocarpus* also possesses a more extensive set of GTPase genes



**Figure 3 | Predicted pattern of loss and gain of gene families during the evolution of a broad range of eukaryotes.** The number of gene families that were acquired (black) or lost (red) at each time point (grey circles) in the tree (Supplementary Information 1.15) was estimated using the Dollo

parsimony principle. For each species, the number of orphans (genes that lacked homologues in the eukaryotic data set), the total number of gene families gained or lost and the overall gain (that is, total gain minus total loss) is indicated.



**Figure 4 | Phylogenetic analysis showing the independent evolution of eukaryotic receptor kinases from the opisthokont, green plant and stramenopile lineages.** Protein maximum-likelihood tree generated using a multiple alignment of kinase domains from eukaryotic receptor kinases and

than other stramenopile genomes (Supplementary Information 2.3.7) and an analysis of transcription-associated proteins indicated that *Ectocarpus* and oomycete genomes have a broader range of transcription factor families than the unicellular diatoms (Supplementary Table 4).

Analysis of a large set of small RNA sequences allowed the identification of 26 microRNAs in *Ectocarpus* (Supplementary Table 17). This observation, together with the identification of microRNAs in three other eukaryotic groups, the archaeplastid, opisthokont and amoebozoan lineages<sup>26</sup>, indicates that these regulatory molecules were present from an early stage of eukaryotic evolution. Sixty-seven candidate target sites were identified for 12 of the 26 microRNAs. Interestingly, 75% of these target sequences occur in genes with leucine-rich repeat (LRR) domains (Supplementary Information 2.3.14). The LRR genes include many members of the ROCO (Roc GTPase plus COR (C-terminal of Roc) domain) family<sup>27</sup> that are predicted to have evolved since the split from the diatoms. Taken together, these observations indicate that a significant proportion of the microRNAs identified may regulate recently evolved processes. This is interesting in the light of suggestions that microRNAs may have had a key role in the evolution of complex multicellularity in the animal lineage<sup>28</sup>.

Analysis of the *Ectocarpus* genome has revealed traces both of its ancient evolutionary past and of more recent events associated with the emergence of the brown algal lineage. The former include the diverse origins of the genes that make up the genome, many of which were acquired via endosymbiotic events (Supplementary Information 2.3.15), whereas the latter include the recent emergence of new gene families and the evolution of an unusual genome architecture, in terms both of gene structure and organization (Supplementary

Information 2.1). It is likely that the evolution of complex multicellularity within brown algae depended on events spanning both timescales. The conservation of completeness and diversity within key gene families over the long term seems to have been as important as the more recent evolution of novel proteins, such as the brown algal receptor kinase family.

related cytosolic kinases. Bootstrap values, when above 65%, are provided at the nodes for maximum-likelihood (first value) and neighbour-joining (second value) analyses.

## METHODS SUMMARY

Genome and cDNA sequencing were carried out using the *Ectocarpus siliculosus* strain Ec 32, which is a meiotic offspring of a field sporophyte collected in 1988 in San Juan de Marcona, Peru. The genome sequence was assembled using 2,233,253 and 903,939 paired, end-sequences from plasmid libraries with 3 and 10 kbp inserts respectively, plus 58,155 paired, end-sequence reads from a small-insert bacterial artificial chromosome library. Annotation was carried out using the EuGene program and optimized by manual correction of gene models and functional assignments. Sequencing of 91,041 cDNA reads, corresponding to six different cDNA libraries, and a whole genome tiling array analysis provided experimental confirmation of a large proportion of the transcribed part of the genome (Table 1). Small RNAs were characterized by generating 7,114,682 sequencing reads from two small RNA libraries on a Solexa Genome Analyser (Illumina). Analyses of the methylation state of genomic DNA and of specific transposon families were carried out using HPLC analysis of nucleotide methylation and McrBC digestion, respectively. Full information about the methodology used can be found in the Supplementary Information section.

Received 9 November 2009; accepted 15 March 2010.

1. Yoon, H. S., Hackett, J. D., Ciniglia, C., Pinto, G. & Bhattacharya, D. A molecular timeline for the origin of photosynthetic eukaryotes. *Mol. Biol. Evol.* 21, 809–818 (2004).
2. Peters, A. F. *et al.* Life-cycle-generation-specific developmental processes are modified in the immediate upright mutant of the brown alga *Ectocarpus siliculosus*. *Development* 135, 1503–1512 (2008).

3. Peters, A. F., Marie, D., Scornet, D., Kloareg, B. & Cock, J. M. Proposal of *Ectocarpus siliculosus* (Ectocarpales, Phaeophyceae) as a model organism for brown algal genetics and genomics. *J. Phycol.* **40**, 1079–1088 (2004).
4. Charrier, B. *et al.* Development and physiology of the brown alga *Ectocarpus siliculosus*: two centuries of research. *New Phytol.* **177**, 319–332 (2008).
5. Coelho, S. M. *et al.* Complex life cycles of multicellular eukaryotes: new approaches based on the use of model organisms. *Gene* **406**, 152–170 (2007).
6. Kawai, H., Hanayuda, T., Draisma, S. G. A. & Müller, D. G. Molecular phylogeny of *Discosporangium mesarthrocarpum* (Phaeophyceae) with a reinstatement of the order Discosporangiales. *J. Phycol.* **43**, 186–194 (2007).
7. Phillips, N., Burrows, R., Rousseau, F., de Reviere, B. & Saunders, G. W. Resolving evolutionary relationships among the brown algae using chloroplast and nuclear genes. *J. Phycol.* **44**, 394–405 (2008).
8. Delaroque, N. *et al.* The complete DNA sequence of the *Ectocarpus siliculosus* virus EsV-1 genome. *Virology* **287**, 112–132 (2001).
9. Dixon, N. M., Leadbeater, B. S. C. & Wood, K. R. Frequency of viral infection in a field population of *Ectocarpus fasciculatus* (Ectocarpales, Phaeophyceae). *Phycologia* **39**, 258–263 (2000).
10. Müller, D. G. *et al.* Massive prevalence of viral DNA in *Ectocarpus* (Phaeophyceae, Ectocarpales) from two habitats in the North Atlantic and South Pacific. *Bot. Mar.* **43**, 157–159 (2000).
11. Rozema, J. *et al.* The role of UV-B radiation in aquatic and terrestrial ecosystems—an experimental and functional analysis of the evolution of UV-absorbing compounds. *J. Photochem. Photobiol. B* **66**, 2–12 (2002).
12. Küpper, F. C. *et al.* Iodide accumulation provides kelp with an inorganic antioxidant impacting atmospheric chemistry. *Proc. Natl Acad. Sci. USA* **105**, 6954–6958 (2008).
13. Colin, C. *et al.* The brown algal kelp *Laminaria digitata* features distinct bromoperoxidase and iodoperoxidase activities. *J. Biol. Chem.* **278**, 23545–23552 (2003).
14. Russell, G. Formation of an ectocarpoid epiflora on blades of *Laminaria digitata*. *Mar. Ecol. Prog. Ser.* **11**, 181–187 (1983).
15. Russell, G. Parallel growth-patterns in algal epiphytes and *Laminaria* blades. *Mar. Ecol. Prog. Ser.* **13**, 303–304 (1983).
16. Kloareg, B. & Quatrano, R. S. Structure of the cell walls of marine algae and ecophysiological functions of the matrix polysaccharides. *Oceanogr. Mar. Biol.* **26**, 259–315 (1988).
17. De Smet, I., Voss, U., Jürgens, G. & Beckman, T. Receptor-like kinases shape the plant. *Nature Cell Biol.* **11**, 1166–1173 (2009).
18. Shiu, S. H. & Bleecker, A. B. Receptor-like kinases from *Arabidopsis* form a monophyletic gene family related to animal receptor kinases. *Proc. Natl Acad. Sci. USA* **98**, 10763–10768 (2001).
19. Cock, J. M., Vanoosthuysse, V. & Gaude, T. Receptor kinase signalling in plants and animals: distinct molecular systems with mechanistic similarities. *Curr. Opin. Cell Biol.* **14**, 230–236 (2002).
20. Arnaout, M. A., Goodman, S. L. & Xiong, J.-P. Structure and mechanics of integrin-based cell adhesion. *Curr. Opin. Cell Biol.* **19**, 495–507 (2007).
21. Nakayama, Y., Fujii, K., Sokabe, M. & Yoshimura, K. Molecular and electrophysiological characterization of a mechanosensitive channel expressed in the chloroplasts of *Chlamydomonas*. *Proc. Natl Acad. Sci. USA* **104**, 5883–5888 (2007).
22. Wheeler, G. L. & Brownlee, C. Ca<sup>2+</sup> signalling in plants and green algae – changing channels. *Trends Plant Sci.* **13**, 506–514 (2008).
23. Goddard, H., Manison, N., Tomos, D. & Brownlee, C. Elemental propagation of calcium signals in response-specific patterns determined by environmental stimulus strength. *Proc. Natl Acad. Sci. USA* **97**, 1932–1937 (2000).
24. Coelho, S. M. *et al.* Spatiotemporal patterning of reactive oxygen production and Ca<sup>2+</sup> wave propagation in *Fucus* rhizoid cells. *Plant Cell* **14**, 2369–2381 (2002).
25. Lin, Z., Kong, H., Nei, M. & Ma, H. Origins and evolution of the *recA/RAD51* gene family: evidence for ancient gene duplication and endosymbiotic gene transfer. *Proc. Natl Acad. Sci. USA* **103**, 10328–10333 (2006).
26. Griffiths-Jones, S., Saini, H., van Dongen, S. & Enright, A. miRBase: tools for microRNA genomics. *Nucleic Acids Res.* **36**, D154–D158 (2008).
27. Marin, I., van Egmond, W. N. & van Haastert, P. J. M. The Roco protein family: a functional perspective. *FASEB J.* **22**, 3103–3110 (2008).
28. Peterson, K. J., Dietrich, M. R. & McPeck, M. A. MicroRNAs and metazoan macroevolution: insights into canalization, complexity, and the Cambrian explosion. *Bioessays* **31**, 736–747 (2009).
29. Dittami, S. M. *et al.* Global expression analysis of the brown alga *Ectocarpus siliculosus* (Phaeophyceae) reveals large-scale reprogramming of the transcriptome in response to abiotic stress. *Genome Biol.* **10**, R66 (2009).

**Supplementary Information** is linked to the online version of the paper at [www.nature.com/nature](http://www.nature.com/nature).

**Acknowledgements** We would like to thank Dieter G. Müller for his help and advice. The project was supported by the French GIS 'Institut de la Génétique Marine', the Centre National de Recherche Scientifique, the European Union network of excellence Marine Genomics Europe, the GIS Europé Mer, the Inter-University Network for Fundamental Research (P6/25, BioMaGNet), the 'Conseil Général' of the Finistère department and the University Pierre and Marie Curie.

**Author Contributions** J.M.C. coordinated genome analysis and manuscript preparation. P.W. and Y.V.d.P. coordinated genome assembly and centralized and enabled the annotation process, respectively. P.W. and Y.V.d.P. should be considered joint last authors. L.S. and P.R. implemented the automated annotation of the genome and made substantial contributions to genome annotation and analysis. D.S. developed and implemented protocols for library construction. L.S., P.R. and D.S. should be considered joint second authors. All other authors are members of the genome sequencing consortium and contributed annotation, analyses or data to the genome project.

**Author Information** The annotated *Ectocarpus* genome sequence can be obtained through the EMBL Nucleotide Sequence Database (accession numbers CABU01000001–CABU01013533, FN647682–FN649242, FN649726–FN649760) and can be browsed at the Bogas website (<http://bioinformatics.psb.ugent.be/webtools/bogas/>). cDNA sequence data are available through accession numbers FP245546–FP312611 and small RNA sequences and tiling array data have been submitted to the GEO database (accession numbers ERA000209 and GSE19912, respectively). The *Ectocarpus* microRNAs have been submitted to miRBase (accession numbers esi-MIR3450–esi-MIR3469). Reprints and permissions information is available at [www.nature.com/reprints](http://www.nature.com/reprints). The authors declare no competing financial interests. Correspondence and requests for materials should be addressed to J.M.C. ([cock@sb-roscoff.fr](mailto:cock@sb-roscoff.fr)).