



**HAL**  
open science

## Serial translocation by means of circular intermediates underlies colour sidedness in cattle

Keith Durkin, Wouter Coppieters, Cord Drögemüller, Naima Ahariz, Nadine Cambisano, Tom Druet, Corinne Fasquelle, Aynalem Haile, Petr Horin,  
Lusheng Huang, et al.

► **To cite this version:**

Keith Durkin, Wouter Coppieters, Cord Drögemüller, Naima Ahariz, Nadine Cambisano, et al.. Serial translocation by means of circular intermediates underlies colour sidedness in cattle. *Nature*, 2012, 482 (7383), pp.81-84. 10.1038/nature10757 . cea-00881375

**HAL Id: cea-00881375**

**<https://cea.hal.science/cea-00881375>**

Submitted on 15 Oct 2019

**HAL** is a multi-disciplinary open access archive for the deposit and dissemination of scientific research documents, whether they are published or not. The documents may come from teaching and research institutions in France or abroad, or from public or private research centers.

L'archive ouverte pluridisciplinaire **HAL**, est destinée au dépôt et à la diffusion de documents scientifiques de niveau recherche, publiés ou non, émanant des établissements d'enseignement et de recherche français ou étrangers, des laboratoires publics ou privés.

# Serial translocation by means of circular intermediates underlies colour sidedness in cattle

Keith Durkin<sup>1</sup>, Wouter Coppieeters<sup>1</sup>, Cord Drögemüller<sup>2</sup>, Naima Ahariz<sup>1</sup>, Nadine Cambisano<sup>1</sup>, Tom Druet<sup>1</sup>, Corinne Fasquelle<sup>1</sup>, Aynalem Haile<sup>3</sup>, Petr Horin<sup>4</sup>, Lusheng Huang<sup>5</sup>, Yohichiro Kamatani<sup>6</sup>, Latifa Karim<sup>1</sup>, Mark Lathrop<sup>6</sup>, Simon Moser<sup>7</sup>, Kor Oldenbroek<sup>8</sup>, Stefan Rieder<sup>7</sup>, Arnaud Sartelet<sup>1</sup>, Johann Sölkner<sup>9</sup>, Hans Stålhammar<sup>10</sup>, Diana Zelenika<sup>6</sup>, Zhiyan Zhang<sup>1</sup>, Tosso Leeb<sup>2</sup>, Michel Georges<sup>1</sup> & Carole Charlier<sup>1</sup>

**Colour sidedness is a dominantly inherited phenotype of cattle characterized by the polarization of pigmented sectors on the flanks, snout and ear tips<sup>1</sup>. It is also referred to as ‘lineback’ or ‘witrik’ (which means white back), as colour-sided animals typically display a white band along their spine. Colour sidedness is documented at least since the Middle Ages and is presently segregating in several cattle breeds around the globe, including in Belgian blue and brown Swiss<sup>1,2</sup>. Here we report that colour sidedness is determined by a first allele on chromosome 29 (*Cs<sub>29</sub>*), which results from the translocation of a 492-kilobase chromosome 6 segment encompassing *KIT* to chromosome 29, and a second allele on chromosome 6 (*Cs<sub>6</sub>*), derived from the first by repatriation of fused 575-kilobase chromosome 6 and 29 sequences to the *KIT* locus. We provide evidence that both translocation events involved circular intermediates. This is the first example, to our knowledge, of a phenotype determined by homologous yet non-syntenic alleles that result from a novel copy-number-variant-generating mechanism.**

To gain insights into the molecular basis of colour sidedness (Fig. 1), we genotyped 21 colour-sided and 30 control Belgian blue animals with a custom-made 50K single nucleotide polymorphism (SNP) array<sup>3</sup>. As a result of segregation at the *roan* locus, Belgian blue animals are either black spotted ( $r^{Bl}r^{Bl}$ ), blue spotted ( $r^{Bl}r^{Wh}$ ) or white ( $r^{Wh}r^{Wh}$ )<sup>4</sup>. As white is epistatic to colour sidedness, we selected non-white control animals. We assumed autosomal dominant inheritance (*Cs* allele) and genetic homogeneity in Belgian blue, and thus scanned the genome of colour-sided animals for a shared haplotype (present in at least one copy) using the ASSDOM software (see Methods). This analysis yielded a single genome-wide significant signal ( $P < 0.03$ ), mapping the *Cs* locus to bovine chromosome 29 (BTA29) (Fig. 2a and Supplementary Fig. 1). A sire transmitting the colour-sided phenotype to all its pigmented offspring was homozygous for the corresponding haplotype as expected. The shared haplotype spanned 1.9 Mb, and encompassed *LUZP2*—not known to be involved in pigmentation—as the only gene. Sequencing the *LUZP2* open reading frame (ORF) from colour-sided and control animals did not reveal any protein-sequence-altering variant (data not shown).

In an independent effort, we scanned the genome for copy number variants (CNVs) using a database of 50K SNP genotypes from >4,500 animals of different breeds and the PennCNV software<sup>5</sup>. Intriguingly, this analysis revealed a private duplication encompassing 26 SNPs on chromosome 6 (BTA6), shared by the 21 colour-sided Belgian blue animals (Fig. 2b). We confirmed and refined the boundaries of this ~480 kb duplication by comparative genome hybridization (CGH) of genomic DNA of a *Cs/Cs* and *+/+* Belgian blue animal

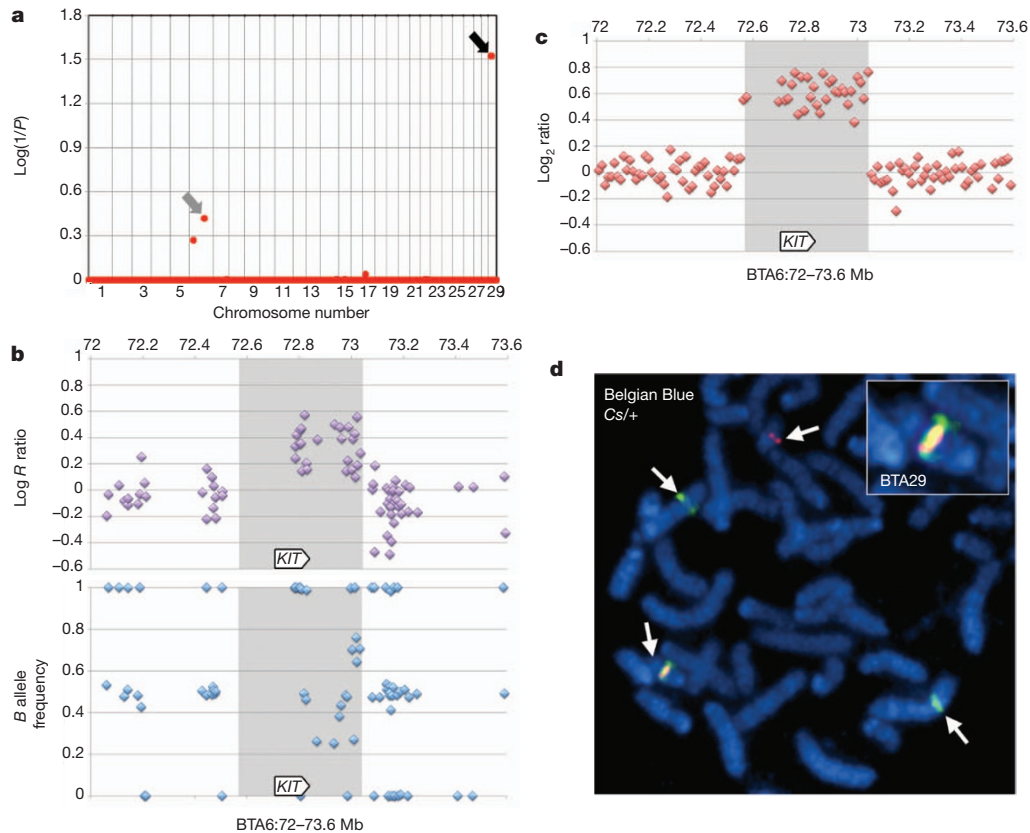
on a genome-wide Nimblegen tiling array (Fig. 2c). The corresponding CNV encompassed the *KIT* gene, known to be essential for melanocyte migration and survival<sup>6</sup>, and to be associated with coat colour variation<sup>7,8</sup>.

To reconcile these apparently discrepant results, we performed fluorescence *in situ* hybridization (FISH) with bacterial artificial chromosome (BAC) clones mapping respectively to the BTA29 association interval (labelled with a red fluorophore), and to the BTA6 CNV interval (labelled with a green fluorophore) on lymphocytes of a *Cs/+* and a *+/+* animal. Overlapping red and green signals on one of the BTA29 homologues of the colour-sided animal demonstrated that the



**Figure 1 | Colour-sided Belgian blue and brown Swiss animals.** **a**, All represented Belgian blue animals are heterozygous *Cs/+*. In addition to the effect of the *Cs* locus, which causes polarization of pigmented sectors to the flanks, ears and snout, Belgian blue animals exhibit considerable polygenic variation in the degree of white spotting. The colour-sided phenotype of the two nearly completely white animals (extensive degree of white spotting) is apparent from the pigmentation of ear tips and snout. **b, c**, In brown Swiss, which are generally devoid of white spotting, homozygous *Cs/Cs* (**b**) and heterozygous *Cs/+* (**c**) animals differ by the extent of pigmentation, explaining why colour sidedness is also referred to as semi-dominant.

<sup>1</sup>Unit of Animal Genomics, GIGA-R & Faculty of Veterinary Medicine, University of Liège (B34), 1 Avenue de l'Hôpital, 4000-Liège (Sart Tilman), Belgium. <sup>2</sup>Institute of Genetics, University of Bern, Bremgartenstrasse 109a, Postfach 8466, 3001 Bern, Switzerland. <sup>3</sup>International Center for Agricultural Research in the Dry Areas (ICARDA), PO Box 5466, Aleppo, Syria. <sup>4</sup>Institute of Genetics, University of Veterinary and Pharmaceutical Sciences Brno, 612 42 Brno, Czech Republic. <sup>5</sup>Key Laboratory for Animal Biotechnology of Jiangxi Province and the Ministry of Agriculture of China, NanChang, Jiangxi Province, 330045, China. <sup>6</sup>Fondation Jean Dausset – Centre d'Etude du Polymorphisme Humain, 27 Rue Juliette Dodu, Paris 75012, France and CEA-IC Centre National de Génotypage, 2 Rue Gaston Crémieux, CP 5721, 91057 Evry Cedex, France. <sup>7</sup>Swiss College of Agriculture, Bern University of Applied Sciences, 3052 Zollikofen, Switzerland. <sup>8</sup>Centre for Genetic Resources the Netherlands (CGN), 6701 BH Wageningen, The Netherlands. <sup>9</sup>Division of Livestock Sciences, University of Natural Resources and Applied Life Sciences, A-1180 Vienna, Austria. <sup>10</sup>Viking Genetics, Örnors, Box 64, S-532 21 Skara, Sweden.



**Figure 2 | Identification and mapping of the colour-sided locus in the Belgian blue.** **a**, Genome-wide association mapping using ASSDOM (see Methods), revealing a genome-wide significant association ( $P < 0.03$ ) on BTA29 (black arrow) and suggestive association on BTA6 (grey arrow). Vertical lines separate chromosomes. **b**, Detection of a duplication on the BTA6 segment shared by 21 colour-sided Belgian blue animals using 50K SNP array

data<sup>3</sup> and PennCNV<sup>3</sup>. **c**, Confirmation and boundary definition using CGH on a Nimblegen bovine tiling array. Shaded areas in **b** and **c** mark the boundaries of the CNV as defined by CGH. **d**, Demonstration by FISH of the translocation of a *KIT*-encompassing BTA6 segment onto BTA29 in a heterozygous *Cs/+* Belgian blue animal. Magnification,  $\times 100$ .

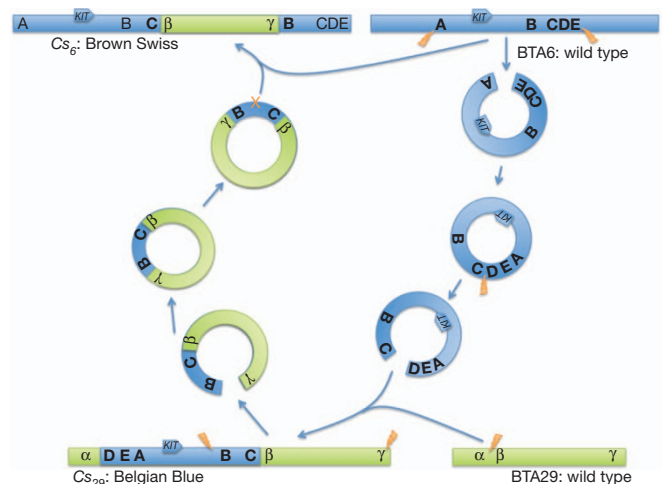
CNV signal resulted from the translocation of the ~480 kb BTA6 segment to BTA29 (Fig. 2d). Retrospective examination of the SNP genotypes indicated that on average 3.17 of the 26 SNPs mapping to the ~480 kb duplication could not be called in colour-sided animals, yet the remaining genotypes were sufficient to yield a suggestive association signal (genome-wide  $P = 0.37$ ), reflecting the sharing of the extra *KIT* haplotype by colour-sided animals (Fig. 2a).

To define the translocation breakpoints, we generated mate-pair libraries from self-ligated ~5 kb DNA fragments of a homozygous *Cs/Cs* Belgian blue animal, and generated ~10 Gb of sequence on an Illumina GAIIX instrument. We expected two clusters of aberrant mate pairs spanning the left and the right breakpoint resulting from the insertion of an intact BTA6 fragment in a BTA29 segment. We refer to the intact BTA6 fragment as  $\alpha$ -B-C-D-E, the BTA29 segment in which it inserts as  $\alpha$ - $\beta$ , and the resulting left and right breakpoints as  $\alpha$ -A and E- $\beta$ , respectively. However, we observed three aberrant mate-pair clusters corresponding respectively to  $\alpha$ -D, E-A and C- $\beta$  fusions (Supplementary Fig. 2). The corresponding topology is most parsimoniously explained by assuming that: (1) the translocated BTA6 fragment circularized (generating fusion E-A); (2) reopened in the C-D interval; and (3) integrated in the  $\alpha$ - $\beta$  BTA29 interval (generating fusions  $\alpha$ -D and C- $\beta$ ; Fig. 3).

Using the genomic coordinates of the clustered mate pairs, we designed primer sets to amplify the three corresponding fusion points. Productive amplification was only achieved using genomic DNA from colour-sided Belgian blue animals, as expected (Supplementary Fig. 3A). We sequenced the corresponding PCR products to define the breakpoints at single-nucleotide resolution. The E-A fusion was characterized by 2 bp micro-homology typical of non-homologous end joining (NHEJ)

(Supplementary Fig. 4A), whereas the  $\alpha$ -D and C- $\beta$  fusions exhibited micro-duplications and micro-deletions reminiscent of replication-dependent microhomology-mediated break-induced replication (MMBIR) (Supplementary Fig. 4B)<sup>9</sup>. All breakpoints mapped to interspersed non-homologous repeat elements (data not shown).

The dominance of the *Cs* allele is expected to reflect a gain of function resulting from dysregulated expression of the translocated *KIT* gene. To verify the transcriptional competence of the translocated



**Figure 3 | Model for the generation of the colour-sided *Cs*<sub>29</sub> and *Cs*<sub>6</sub> alleles by serial translocation via circular shuttling intermediates.**

*KIT* copy, we performed polymerase chain reaction with reverse transcription (RT-PCR) experiments using amplicons spanning two SNPs: the ss469414206 G-to-A transition in intron 1, and the ss469414207 C-to-T transition in intron 7. We extracted total RNA from pigmented and unpigmented skin sectors of a *Cs/+* colour-sided Belgian blue animal with the GG genotype on BTA6 and the A genotype on BTA29 ((GG)<sub>6</sub>/A<sub>29</sub>) for ss469414206 and the (CC)<sub>6</sub>/T<sub>29</sub> genotype for ss469414207. The resulting pre-mRNA-dependent RT-PCR products were directly sequenced and the ratio of T/C and A/G species was estimated using Peakpicker<sup>10</sup>. T/A transcripts accounted for ~33% of the *KIT* output in both pigmented and unpigmented sectors, demonstrating the transcriptional potential of the translocated gene copy. Long-range RT-PCR analysis of the near complete *KIT* mRNA with primers located respectively in exon 1 and the 3' untranslated region (UTR) followed by amplicon sequencing did not show evidence for alternate transcripts in colour-sided animals (Supplementary Fig. 5).

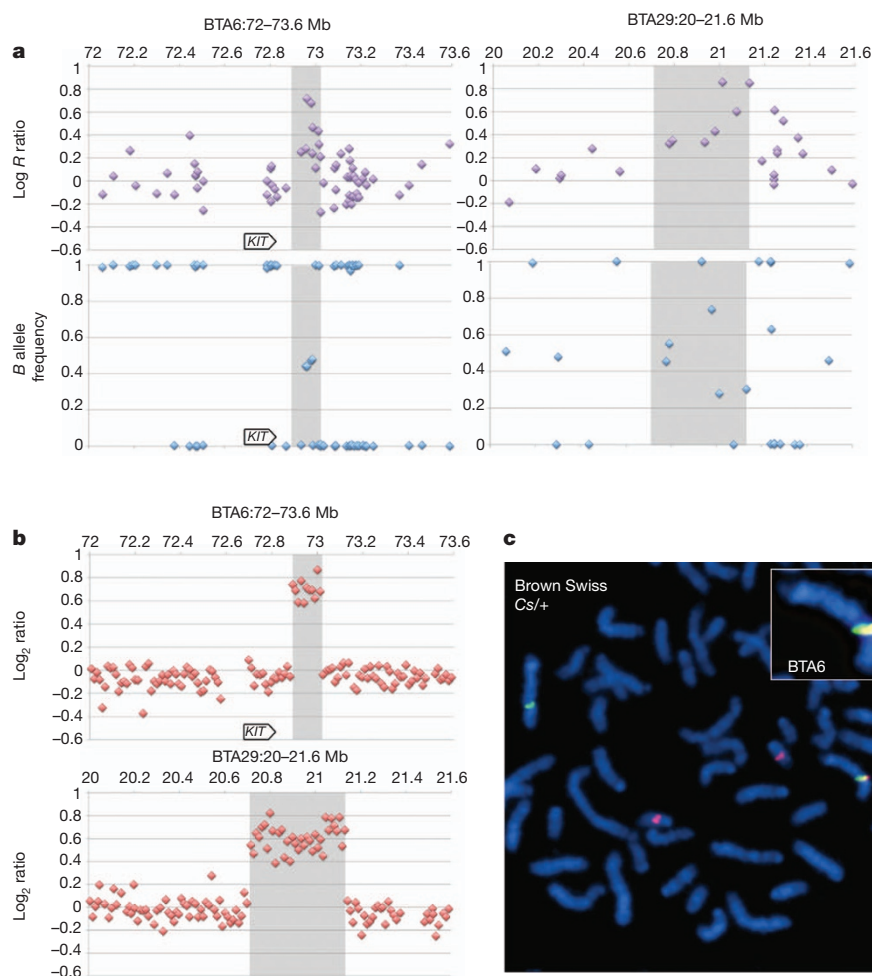
Linkage analysis performed in a brown Swiss pedigree segregating for colour sidedness with microsatellite markers targeting candidate genes (*KIT*, *KITL*, *MITF*, *EDNRB*, *ADAMTS20*), yielded a log of odds (lod) score of 6.9 maximizing in the immediate vicinity of the *KIT* locus (Supplementary Table 1). We genotyped four colour-sided (three *Cs/Cs* and one *Cs/+*), and five control brown Swiss animals using a 50K SNP array<sup>3</sup>. Colour-sided *Cs/Cs* brown Swiss animals indeed shared a 2.0 Mb autozygous haplotype encompassing the *KIT* locus. At first glance, these findings suggested a distinct determinism of colour sidedness in Belgian blue and brown Swiss.

We analysed the corresponding SNP genotypes with PennCNV and performed CGH using genomic DNA from brown Swiss *Cs/Cs* versus *+/+* animals. This revealed the duplication of a ~120-kb BTA6 segment nested in the Belgian blue duplication, but excluding the *KIT*

gene. Intriguingly, it also revealed the duplication of a ~418-kb BTA29 segment immediately flanking the Belgian blue insertion site and encompassing the last four of twelve *LUZP2* exons ( $\beta$ - $\gamma$ ; Fig. 4a, b). Moreover, fusion point C- $\beta$  (but not  $\alpha$ -C and D-A), specifying the Belgian blue *Cs* allele, could be amplified by PCR from genomic DNA of all examined brown Swiss colour-sided but not control animals (Supplementary Fig. 3). These findings established a clear link between the Belgian blue and brown Swiss *Cs* alleles.

We performed FISH analysis on lymphocytes of a *Cs/+* brown Swiss animal using BTA6 and BTA29 BAC clones. Remarkably, we observed overlapping red and green signals on one of the BTA6 homologues, hence revealing the translocation of a BTA29 fragment on BTA6 (Fig. 4c). We generated mate-pair libraries from self-ligated ~5-kb and ~2-kb DNA fragments of a brown Swiss *Cs/Cs* animal and generated ~15 Gb of sequence on an Illumina GAIIX instrument (Supplementary Fig. 2). Analysis of the resulting sequence traces revealed two aberrant mate-pair clusters. The first corresponds to the Belgian blue C- $\beta$  fusion point, previously detected by PCR. The second corresponds to a novel B- $\gamma$  fusion point (Supplementary Fig. 2). The most parsimonious explanation accounting for all the data is that the brown Swiss *Cs* allele derives from the Belgian blue *Cs* allele by (1) excision of the B-C- $\beta$ - $\gamma$  fragment from the Belgian blue *Cs* allele on BTA29, (2) circularization, and (3) re-integration in the wild-type *KIT* locus and characterized by tandem duplicates of the B-C segment flanking the translocated  $\beta$ - $\gamma$  BTA29 fragment (A-B-C- $\beta$ - $\gamma$ -B-C-D-E; Fig. 3).

Our model predicts that the C and B BTA6 segments immediately flanking  $\beta$ - $\gamma$  carry the same haplotype as the *Cs*-allele of Belgian blue. To test this, we developed long-range PCR assays that would specifically



**Figure 4 | Identification and mapping of the colour-sided locus in brown Swiss animals.**

**a**, PennCNV evidence for BTA6 and BTA29 duplications in brown Swiss colour-sided animals. The slightly different distribution of BTA6 SNPs when compared to Fig. 2 is due to the use of a different version of the 50K SNP array<sup>1</sup>.

**b**, Confirmation and boundary definition of the *Cs*-associated BTA6 and BTA29 duplication in brown Swiss animals using CGH on Nimblegen bovine tiling arrays. The shaded areas in **a** and **b** mark the boundaries of the CNV, as defined by CGH.

**c**, Demonstration by FISH of the translocation of a BTA29 segment onto BTA6 in a heterozygous *Cs/+* brown Swiss animal.

amplify B, C, **B** and C segments from genomic DNA of a Cs/Cs brown Swiss animal, and—by sequencing the corresponding amplicons—determined the genotype of B and **B** and C and C for four SNP positions heterozygous in the high-throughput sequence reads of the brown Swiss Cs/Cs animal. We then determined the genotype of the Belgian blue Cs allele for the corresponding variants and showed that it matched the C and **B** segments of the brown Swiss Cs allele, in agreement with our model of homologous-recombination-dependent resolution of the circular intermediate (Fig. 3 and Supplementary Fig. 6).

Using the mate-pair genomic coordinates, we designed primer pairs to amplify the  $\gamma$ -**B** fusion point. As expected, productive amplification was only achieved using genomic DNA from colour-sided brown Swiss animals (Supplementary Fig. 3). We sequenced the corresponding PCR products to define the breakpoints at single-nucleotide resolution. The  $\gamma$ -**B** fusion presented hallmarks typical of microhomology mediated break induced replication (MMBIR) (Supplementary Fig. 4).

We obtained genomic DNA from colour-sided animals from seven additional cattle breeds and domestic yaks (Supplementary Fig. 7), which we tested by PCR for the presence of the two Belgian-blue-specific fusion points (**E-A**,  $\alpha$ -**D**), the brown-Swiss-specific fusion point ( $\gamma$ -**B**), and the Belgian blue/brown Swiss shared fusion point (**C**- $\beta$ ). Colour-sided Dutch witrik and Ethiopian foga animals were shown to carry the Belgian blue Cs allele ( $C_{S29}$ ), Austrian pustertaler sprinzen, Czech red-spotted cattle and French vosgienne the brown Swiss Cs allele ( $C_{S6}$ ), and Irish moiled, Swedish mountain and domestic yak carried both the  $C_{S29}$  and  $C_{S6}$  alleles (Supplementary Fig. 3). We assume that  $C_{S29}$  and  $C_{S6}$  alleles were introgressed in yak after domestication via well-documented hybridization of *Bos taurus* and *Bos grunniens*. These findings indicate that the  $C_{S29}$  and  $C_{S6}$  alleles account for most if not all colour sidedness in cattle.

Analysis of colour sidedness has revealed a novel CNV-generating translocation mechanism involving circular intermediates. Whether this is a bovine idiosyncrasy or a more common mechanism remains to be determined. That some CNVs reflect translocation events is well established. As an example, 75 probable dispersed duplications in the human genome have been reported<sup>11</sup>, as well as at least four interchromosomal duplications<sup>12,13</sup>. We ourselves performed genome-wide association mapping between the SNP and CNV genotype in human and cattle, and observed 21 and 4 putative ‘trans-associations’ (that is, non-syntenic CNV-defining SNPs and associated SNPs), respectively (Supplementary Material). Some of these dispersed duplications might involve circular intermediates. In support of the occurrence of other instances involving circular intermediates are recent observations of repeated translocation of five clustered ORFs in wine and bioethanol strains of *Saccharomyces cerevisiae*, apparently via resolution of circular intermediates<sup>14</sup>. The same mechanism may contribute to somatic mutations in tumours. Indeed, episodes with the *NUP214-ABL1* fusion gene (observed in ~6% of T-cell acute lymphoblastic leukaemia) have been proposed to result from circularization and excision of a chromosome 9 segment bounded by the *NUP214* and *ABL1* genes, and to reintegrate ectopically by the same resolving mechanism proposed for colour sidedness in at least some patients<sup>15</sup>. The repatriation of exogenous sequences (including exons) back to the original chromosomal location via circular ‘shuttling’ intermediates suggests that this mechanism might underlie a specific mode of exon shuffling.

## METHODS SUMMARY

A custom 50K SNP array<sup>3</sup> was used to genotype 21 colour-sided and 30 control Belgian blue animals. The genome of colour-sided animals was scanned for a shared haplotype using the ASSDOM software. In the brown Swiss, microsatellites adjacent to five candidate genes were genotyped in three half-sibling families and two point linkage calculated using the Merlin software<sup>16</sup>. CNVs were identified in the 50K SNP array data using the PennCNV software<sup>5</sup>. Array CGH was carried out on a custom 2.1 M oligonucleotide array (Roche-Nimblegen) with a non-colour-sided Belgian blue used as the reference in each hybridization. Metaphase spreads

were generated from short-term lymphocyte cultures. BACs from the duplicated regions on BTA6 and BTA29 were identified using end sequences from the bovine RPC142 BAC library. BACs were labelled with the appropriate fluorochrome by nick translation (Abbott Molecular), hybridized to the metaphase spreads and examined by fluorescent microscopy. Mate-pair libraries were generated using the Illumina mate-pair library kit v.2 for a Cs/Cs Belgian blue and a Cs/Cs brown Swiss animal. A paired-end library was also generated for a Cs/+ Belgian blue using the Illumina paired-end kit. Sequencing was carried out on an Illumina GAIIx instrument. PCR products spanning regions of interest were purified using QIAquick PCR purification kit (Qiagen), sequenced using Big Dye terminator cycle-sequencing kit v.3.1 (Applied Biosystems) and run on an ABI PRISM 3730 DNA analyser (Applied Biosystems). RNA was extracted from skin using the RNeasy fibrous tissue mini kit (Qiagen) and cDNA was synthesized using SuperScript II first-strand Synthesis SuperMix (Invitrogen). Long-range PCR was carried out using the Expand Long Template PCR System (Roche).

**Full Methods** and any associated references are available in the online version of the paper at [www.nature.com/nature](http://www.nature.com/nature).

Received 4 September; accepted 5 December 2011.

- Olson, T. *The Genetics of Cattle* (CAB International, 1999).
- Porter, V. & Mason, I. L. *Mason's World Dictionary of Livestock Breeds, Types, and Varieties* (CAB International, 2002).
- Charlier, C. *et al.* Highly effective SNP-based association mapping and management of recessive defects in livestock. *Nature Genet.* **40**, 449–454 (2008).
- Charlier, C. *et al.* Microsatellite mapping of the bovine roan locus: a major determinant of white heifer disease. *Mamm. Genome* **7**, 138–142 (1996).
- Wang, K. *et al.* PennCNV: an integrated hidden Markov model designed for high-resolution copy number variation detection in whole-genome SNP genotyping data. *Genome Res.* **17**, 1665–1674 (2007).
- Yoshida, H. *et al.* Melanocyte migration and survival controlled by *SCF/c-kit* expression. *J. Invest. Dermatol. Symp. Proc.* **6**, 1–5 (2001).
- Brooks, S. A. *et al.* A chromosome inversion near the *KIT* gene and the Tobiano spotting pattern in horses. *Cytogenet. Genome Res.* **119**, 225–230 (2007).
- Marklund, S. *et al.* Molecular basis for the dominant white phenotype in the domestic pig. *Genome Res.* **8**, 826–833 (1998).
- Hastings, P. J., Lupski, J. R., Rosenberg, S. M. & Ira, G. Mechanisms of change in gene copy number. *Nature Rev. Genet.* **10**, 551–564 (2009).
- Ge, B. *et al.* Survey of allelic expression using EST mining. *Genome Res.* **15**, 1584–1591 (2005).
- Conrad, D. F. *et al.* Origins and functional impact of copy number variation in the human genome. *Nature* **464**, 704–712 (2010).
- Liu, G. E. *et al.* Analysis of copy number variations among diverse cattle breeds. *Genome Res.* **20**, 693–703 (2010).
- Liu, G. E. *et al.* Analysis of recent segmental duplications in the bovine genome. *BMC Genomics* **10**, 571 (2009).
- Borneman, A. R. *et al.* Whole-genome comparison reveals novel genetic elements that characterize the genome of industrial strains of *Saccharomyces cerevisiae*. *PLoS Genet.* **7**, e1001287 (2011).
- Graux, C. *et al.* Heterogeneous patterns of amplification of the *NUP214-ABL1* fusion gene in T-cell acute lymphoblastic. *Leukemia* **23**, 125–133 (2009).
- Abecasis, G. *et al.* Merlin-rapid analysis of dense genetic maps using sparse gene flow trees. *Nature Genet.* **30**, 97–101 (2002).

**Supplementary Information** is linked to the online version of the paper at [www.nature.com/nature](http://www.nature.com/nature).

**Acknowledgements** This work was funded by the Walloon Direction General Operationnelle Agriculture, Ressources Naturelles et Environnement (grants D31-1206 and D31-1214) and the Swiss National Science Foundation (grant 31003A\_133034 to T.L.). We are grateful for the support of the GIGA-R Genomics platform, to P. Melvin, to G. Mekuriaw and staff of the Andassa livestock research center, Viking Genetics, Swissgenetics and the Schweizer Braunviehzuchtverband for their assistance in sample collection, to J. Vermeesch and B. Nowakowska for their assistance with array CGH.

**Author Contributions** K.D. performed the PennCNV, CGH, FISH, next-generation sequencing, breakpoint, DNA sequence variant and expression analyses. W.C. performed the bioinformatic analyses of the high-throughput sequencing reads. A.H., P.H., L.H., K.O., A.S., J.S. and H.S. provided samples from colour-sided animals. C.D., S.M. and S.R. performed linkage analyses in brown Swiss animals. T.L. supervised the work in Switzerland. C.C., M.G., T.D. and Z.Z. performed the association analyses. N.A. and N.C. performed SNP genotyping. C.F. and L.K. performed amplicon sequencing. Y.K., M.L. and D.Z. provided human CNV genotype data. K.D., M.G. and C.C. analysed data and wrote the manuscript.

**Author Information** Reprints and permissions information is available at [www.nature.com/reprints](http://www.nature.com/reprints). The authors declare no competing financial interests. Readers are welcome to comment on the online version of this article at [www.nature.com/nature](http://www.nature.com/nature). Correspondence and requests for materials should be addressed to M.G. ([michel.georges@ulg.ac.be](mailto:michel.georges@ulg.ac.be)).

## METHODS

**Association and linkage mapping of the colour-sided locus.** SNP genotyping was conducted using custom-made 50K Infinium SNP arrays<sup>3</sup> used according to the instructions of the manufacturer. Microsatellite genotyping was conducted as previously described<sup>17</sup>. Association analysis was conducted using ASSDOM. ASSDOM searches for chromosome segments devoid of SNPs for which cases have alternate homozygous genotype (say 11 versus 22), excluding the sharing of an identical-by-descent (single-copy) haplotype. Intervals bounded by such excluding SNPs receive a score corresponding to  $\sum_{i=1}^k \log(1-p_i^2)^n$ , where  $p_i$  is the frequency of the allele missing among  $n$  cases, estimated in  $m$  controls. The genome-wide statistical significance of the 'non-exclusion' signal is determined by phenotype permutation of the disease status between the  $n$  cases and  $m$  controls. Two-point linkage analyses were conducted with Merlin<sup>16</sup>.

**Prediction of CNVs from SNP genotype data.** The log  $R$  ratio signal intensity and  $B$  allele frequency from a custom 50K SNP array<sup>3</sup> were obtained using Illumina BeadStudio software. PennCNV, a hidden Markov model based approach that takes into account signal intensity, allelic intensity ratio, distance between markers and allele frequency<sup>5</sup> was used to call CNVs. Regions of the genome that showed evidence of copy number change were inspected in greater detail. Plots of log  $R$  ratio and  $B$  allele frequency were examined in BeadStudio (Illumina) and the region checked in the University of California, Santa Cruz (UCSC) genome browser (<http://genome.ucsc.edu/>).

**Detection of CNVs by CGH.** Array CGH was carried out on a custom 2.1 M oligonucleotide array (Roche-Nimblegen) based on the UMD 3.0 bovine assembly. The array contained 2,152,422 probes (50–75 mers) with a median spacing of 1,160 bp. The reference animal used in hybridizations was a non-colour-sided Belgian blue. Genomic DNA labelling (Cy3 for sample and Cy5 reference), hybridization and washing were performed according to the manufacturer's instructions and have been described elsewhere<sup>18</sup>. Slides were scanned using a GenePix 4000B 5  $\mu\text{m}$  microarray scanner (Axon Instruments). Images were processed using NimbleScan software (Roche-Nimblegen). Spatial correction was applied and data normalized<sup>19</sup>, segmentation was performed using the DNACopy algorithm<sup>20</sup>. The log<sub>2</sub> ratios for each oligonucleotide were also examined visually for evidence of a change in copy number in regions of interest.

**FISH.** Peripheral blood was obtained from colour-sided and wild-type Belgian blue and brown Swiss animals. Pokeweed-stimulated lymphocyte cultures were established and chromosome spreads prepared for colour-sided and wild-type animals in each breed following standard cytogenetic procedures. End sequences from the RPCI42 bovine BAC library and the duplicated regions on BTA6 and BTA29 in the colour-sided Belgian blue and brown Swiss were downloaded from the National Center for Biotechnology Information (NCBI; <http://www.ncbi.nlm.nih.gov/>). BLAST was used to identify end sequences located in the duplicated regions. The BACs 160M9 and 156I13 overlap and cover the region chr6:72,566,605–72,817,995 (bosTau4), while the BACs 37P11 and 116G8 also overlap and cover the region chr29:20,772,406–21,035,251 (bosTau4). BAC clones were initially cultured at 37 °C in 1 ml of 2YT media containing 30  $\mu\text{g ml}^{-1}$  chloramphenicol. The cultures were plated on lysogeny broth (LB) agar plates with 30  $\mu\text{g ml}^{-1}$  chloramphenicol to obtain single colonies, the identity of the BACs was confirmed by PCR using primers designed within the area encompassed by the respective BAC (Supplementary Table 2). The positive clones were then used to inoculate 100 ml of 2YT media with 30  $\mu\text{g ml}^{-1}$  chloramphenicol. Following 24 h at 37 °C with constant agitation, DNA was extracted using the Qiagen midprep kit, following the manufacturer's instructions. The DNA was labelled with the nick translation kit from Abbott Molecular, using the manufacturer's protocol. DNA from BACs 160M9 and 156I13 was mixed and labelled with spectrum green (Abbott Molecular) while 37P11 and 116G8 were mixed and labelled with spectrum orange (Abbott Molecular). Labelled DNA (100 ng) was combined with 1  $\mu\text{g}$  of bovine Cot-1 DNA and 2  $\mu\text{g}$  of bovine genomic DNA, precipitated then re-suspended in 3  $\mu\text{l}$  of purified water and 7  $\mu\text{l}$  of hybridization buffer (Abbott Molecular). The separate probes were denatured at 73 °C for 5 min and then combined on a slide containing metaphase spreads. These slides had been denatured in 70% formamide in 2 $\times$  SSC at 75 °C for 5 min followed by dehydration in ethanol. A coverslip was secured with rubber cement and the slide incubated overnight at 37 °C in a humidified chamber. Slides were then washed in 0.4 $\times$  SSC/0.3% Tween-20 at 73 °C for 1–3 s followed by washing in 2 $\times$  SSC/0.1% Tween-20 at room temperature (~18 °C) for 1–3 s and air dried. The slides were counterstained with DAPI II (Abbott Molecular) and visualized by fluorescent microscopy.

**Next-generation sequencing of mate-pair and paired-end libraries.** Mate-pair libraries with different insert sizes were generated using the Illumina mate-pair library kit, v.2. The manufacturer's instructions were followed except for the step involving fragmentation of the circularized DNA, for which a bioruptor sonicator

UCD-200 (Diagenode) was used. The 300  $\mu\text{l}$  sample was placed in a 1.5 ml Eppendorf tube and sonicated for 8 min with the instrument set to high and a cycle of 30 s on and 30 s off. A 5-kb insert library was generated for a *Cs/Cs* Belgian blue animal and a 2-kb and 5-kb for a *Cs/Cs* brown Swiss animal. A paired-end library with a 400 bp insert size was also generated for a *Cs/+* Belgian blue animal using the Illumina paired-end kit, following the instructions of the manufacturer. The resulting libraries were quantified using Pico-Green (Quant-it, Invitrogen) and the Agilent 2100 Bioanalyzer High Sensitivity DNA kit (Agilent Technologies). Sequencing was carried out on an Illumina GAIIx instrument. Mapping of the 36 bp from each end of the mate-pair libraries and the 110 bp from the ends of the paired-end library was performed using the BWA tool<sup>21</sup>. Breakpoints were identified by visually inspecting the mate pairs using the integrative genomics viewer<sup>22</sup> in the ~2-Mb region surrounding the *Cs*-specific duplications in Belgian blue and brown Swiss animals and looking for discordant mate pairs.

**PCR amplification of translocation breakpoints.** PCR primers were designed to span each of the breakpoints identified by mate-pair sequencing. The primers were tested on genomic DNA from colour-sided and wild-type animals. PCR products were visualized on a 2% agarose gel. Primers with amplification confined to colour-sided animals were purified using the QIAquick PCR purification kit (Qiagen), where multiple bands were observed the relevant band was excised and purified using the QIAquick gel extraction kit (Qiagen). The fragments were then sequenced using Big Dye terminator cycle-sequencing kit v.3.1 (Applied Biosystems) with the purified reaction run on an ABI PRISM 3730 DNA analyser (Applied Biosystems). Primers used are listed in Supplementary Table 2.

**Analysis of *Cs*<sub>29</sub>-derived *KIT* transcripts.** To ensure that no mutations were present in the coding sequence of the *Cs*<sub>29</sub>-specific *KIT* gene, primers were designed to amplify all the exons and the 3' UTR from genomic DNA (Supplementary Table 2). The resulting PCR products were sequenced as outlined above, which did not reveal any protein altering DNA sequence variant. To examine expression of *KIT* from the *Cs*<sub>29</sub> allele, a small biopsy of skin was removed from the back (white skin) and side (pigmented skin) of a colour-sided Belgian blue animal (the relevant ethical procedures were adhered to). The samples were immediately frozen in liquid nitrogen and stored at –80 °C until RNA extraction. The tissue was homogenized using a Tissue Lyser (Qiagen), total RNA was extracted using the RNeasy fibrous tissue mini kit (Qiagen), following the manufacturer's instructions. First-strand cDNA was synthesized using SuperScript II first-strand Synthesis SuperMix (Invitrogen) with a mixture of random hexamers and oligo(dT) primers. Genomic DNA was extracted from whole blood from the same animal using standard phenol-chloroform extraction. The intronic regions of the *KIT* gene were searched for SNPs using the mate-pair sequences produced from the *Cs/Cs* Belgian blue animal. Primers were designed around suitable SNPs and sequenced in the tissue donor. To establish the genotype of the *Cs*<sub>29</sub> allele, multiple colour-sided animals were sequenced. For SNP ss469414207 (C/T) 40 colour-sided animals were sequenced. For all *Cs/Cs* animals, the C and T alleles had equal peak height, while in the remaining *Cs/+* animals the T allele produced the smaller peak. Additionally seven non colour-sided Belgian blue animals were also sequenced and none possessed the T allele. For SNP ss469414206 (G/A), two *Cs/Cs* and three *Cs/+* animals were sequenced and showed a pattern of peak heights consistent with the *Cs*<sub>29</sub> allele having the A genotype. To determine if the *Cs*<sub>29</sub> allele was expressed, the cDNA from the skin biopsies was amplified using primers spanning both SNPs and sequenced as outlined above. Moreover, and to ensure the integrity of *Cs*<sub>29</sub>-derived *KIT* transcripts, primers located in the first exon and the 3' UTR (Supplementary Table 2) were used with the Expand Long Template PCR System (Roche) to amplify the near full-length *KIT* cDNA. The product was run on 1% gel and examined for evidence of alternative splicing.

**Genotyping the duplicated B and C segments of the *Cs*<sub>6</sub> allele.** Long-range PCR was carried out using the Expand Long Template PCR System (Roche). The genomic DNA used as template was extracted using QIAamp DNA Mini columns (Qiagen) following the manufacturer's instructions to produce high molecular weight DNA. For each reaction the following mix was prepared: 2  $\mu\text{l}$  Buffer 1, 140  $\mu\text{M}$  dNTP, 120 nM upstream and downstream primer, 0.3  $\mu\text{l}$  enzyme mix and 100 ng genomic DNA, final volume was 20  $\mu\text{l}$ . Extension time and the thermal profile recommended by the manufacturer was followed. Following 30 cycles 10  $\mu\text{l}$  of the product was run on a 0.8% agarose gel to check for amplification, the remaining reaction mix was retained. The PCR primers spanning the relevant SNP were then used in a conventional PCR reaction using between 0.1 and 0.5  $\mu\text{l}$  (amount determined by intensity of band) of the long-range product as template. When long-range PCR product was used as template the number of cycles was reduced to 20. Clean-up and sequencing was carried out as outlined above. Used primers are reported in Supplementary Table 2.

17. Drögemüller, C. *et al.* Genetic mapping of the belt pattern in Brown Swiss cattle to BTA3. *Anim. Genet.* **40**, 225–229 (2009).

18. Selzer, R. *et al.* Analysis of chromosome breakpoints in neuroblastoma at sub-kilobase resolution using fine-tiling oligonucleotide array CGH. *Genes Chromosom. Cancer* **44**, 305–319 (2005).
19. Workman, C. *et al.* A new non-linear normalization method for reducing variability in DNA microarray experiments. *Genome Biol.* **3**, 0048 (2002).
20. Olshen, A. *et al.* Circular binary segmentation for the analysis of array-based DNA copy number data. *Biostatistics* **5**, 557–572 (2004).
21. Li, H. & Durbin, R. Fast and accurate short read alignment with Burrows–Wheeler transform. *Bioinformatics* **25**, 1754–1760 (2009).
22. James, T. *et al.* Integrative genomics viewer. *Nature Biotechnol.* **29**, 24–26 (2011).